



Full wwPDB X-ray Structure Validation Report

Feb 28, 2014 – 09:23 AM GMT

PDB ID : 4JWU
Title : Crystal structure of Cytochrome P450cam-putidaredoxincomplex
Authors : Tripathi, S.M.; Li, H.; Poulos, T.L.
Deposited on : 2013-03-27
Resolution : 2.20 Å(reported)

This is a full wwPDB validation report for a publicly released PDB entry.
We welcome your comments at validation@mail.wwpdb.org
A user guide is available at <http://wwpdb.org/ValidationPDFNotes.html>

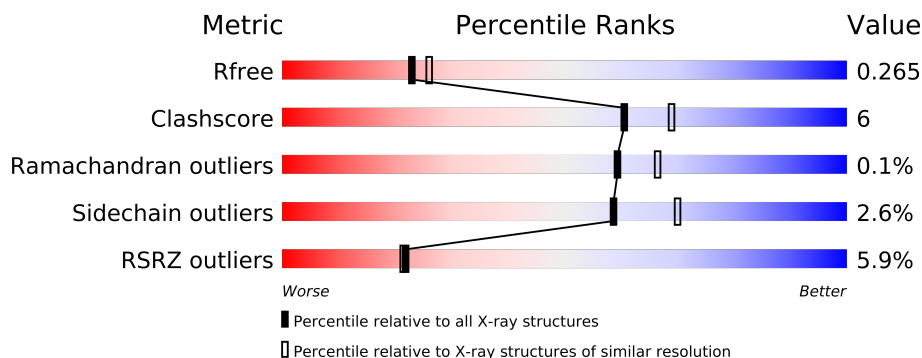
The following versions of software and data (see [references](#)) were used in the production of this report:

MolProbity : 4.02b-467
Mogul : 1.15 2013
Xtriage (Phenix) : dev-1323
EDS : stable22639
Percentile statistics : 21963
Refmac : 5.8.0049
CCP4 : 6.3.0 (Settle)
Ideal geometry (proteins) : Engh & Huber (2001)
Ideal geometry (DNA, RNA) : Parkinson et. al. (1996)
Validation Pipeline (wwPDB-VP) : stable22683

1 Overall quality at a glance

The reported resolution of this entry is 2.20 Å.

Percentile scores (ranging between 0-100) for global validation metrics of the entry are shown in the following graphic. The table shows the number of entries on which the scores are based.



Metric	Whole archive (#Entries)	Similar resolution (#Entries, resolution range(Å))
R_{free}	66092	2938 (2.20-2.20)
Clashscore	79885	3751 (2.20-2.20)
Ramachandran outliers	78287	3681 (2.20-2.20)
Sidechain outliers	78261	3682 (2.20-2.20)
RSRZ outliers	66119	2939 (2.20-2.20)

The table below summarises the geometric issues observed across the polymeric chains and their fit to the electron density. The red, orange, yellow and green segments on the lower bar indicate the fraction of residues that contain outliers for ≥ 3 , 2, 1 and 0 types of geometric quality criteria. The upper red bar (where present) indicates the fraction of residues that have poor fit to the electron density.

Mol	Chain	Length	Quality of chain
1	A	415	
1	B	415	
2	C	113	
2	D	113	

The following table lists non-polymeric compounds that are outliers for geometric or electron-density-fit criteria:

Mol	Type	Chain	Res	Geometry	Electron density
5	1N0	A	503	-	X

2 Entry composition

There are 7 unique types of molecules in this entry. The entry contains 8399 atoms, of which 0 are hydrogen and 0 are deuterium.

In the tables below, the ZeroOcc column contains the number of atoms modelled with zero occupancy, the AltConf column contains the number of residues with at least one atom in alternate conformation and the Trace column contains the number of residues modelled with at most 2 atoms.

- Molecule 1 is a protein called Camphor 5-monooxygenase.

Mol	Chain	Residues	Atoms					ZeroOcc	AltConf	Trace
1	A	405	Total	C	N	O	S	0	0	0
			3204	2030	559	601	14			
1	B	403	Total	C	N	O	S	0	0	0
			3185	2020	554	597	14			

There are 12 discrepancies between the modelled and reference sequences:

Chain	Residue	Modelled	Actual	Comment	Reference
A	58	SER	CYS	ENGINEERED MUTATION	UNP P00183
A	85	SER	CYS	ENGINEERED MUTATION	UNP P00183
A	136	SER	CYS	ENGINEERED MUTATION	UNP P00183
A	285	SER	CYS	ENGINEERED MUTATION	UNP P00183
A	334	ALA	CYS	ENGINEERED MUTATION	UNP P00183
A	344	CYS	LYS	ENGINEERED MUTATION	UNP P00183
B	58	SER	CYS	ENGINEERED MUTATION	UNP P00183
B	85	SER	CYS	ENGINEERED MUTATION	UNP P00183
B	136	SER	CYS	ENGINEERED MUTATION	UNP P00183
B	285	SER	CYS	ENGINEERED MUTATION	UNP P00183
B	334	ALA	CYS	ENGINEERED MUTATION	UNP P00183
B	344	CYS	LYS	ENGINEERED MUTATION	UNP P00183

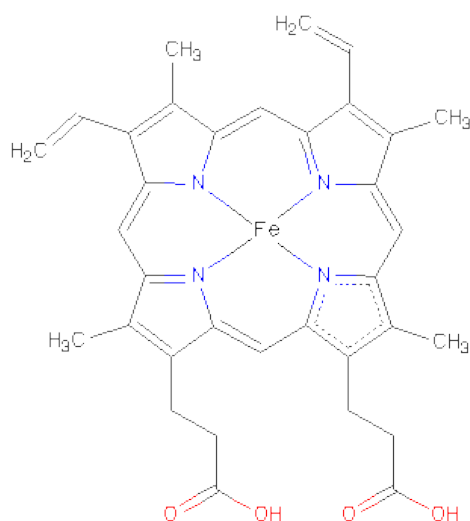
- Molecule 2 is a protein called Putidaredoxin.

Mol	Chain	Residues	Atoms					ZeroOcc	AltConf	Trace
2	C	106	Total	C	N	O	S	0	0	0
			792	487	136	160	9			
2	D	106	Total	C	N	O	S	0	0	0
			792	487	136	160	9			

There are 16 discrepancies between the modelled and reference sequences:

Chain	Residue	Modelled	Actual	Comment	Reference
C	-6	HIS	-	EXPRESSION TAG	UNP P00259
C	-5	HIS	-	EXPRESSION TAG	UNP P00259
C	-4	HIS	-	EXPRESSION TAG	UNP P00259
C	-3	HIS	-	EXPRESSION TAG	UNP P00259
C	-2	HIS	-	EXPRESSION TAG	UNP P00259
C	-1	HIS	-	EXPRESSION TAG	UNP P00259
C	19	CYS	ASP	ENGINEERED MUTATION	UNP P00259
C	73	SER	CYS	ENGINEERED MUTATION	UNP P00259
D	-6	HIS	-	EXPRESSION TAG	UNP P00259
D	-5	HIS	-	EXPRESSION TAG	UNP P00259
D	-4	HIS	-	EXPRESSION TAG	UNP P00259
D	-3	HIS	-	EXPRESSION TAG	UNP P00259
D	-2	HIS	-	EXPRESSION TAG	UNP P00259
D	-1	HIS	-	EXPRESSION TAG	UNP P00259
D	19	CYS	ASP	ENGINEERED MUTATION	UNP P00259
D	73	SER	CYS	ENGINEERED MUTATION	UNP P00259

- Molecule 3 is PROTOPORPHYRIN IX CONTAINING FE (three-letter code: HEM) (formula: $C_{34}H_{32}FeN_4O_4$).

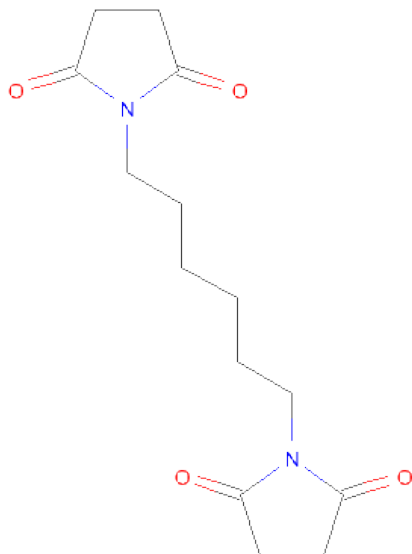


Mol	Chain	Residues	Atoms					ZeroOcc	AltConf
3	A	1	Total	C	Fe	N	O	0	0
			43	34	1	4	4		
3	B	1	Total	C	Fe	N	O	0	0
			43	34	1	4	4		

- Molecule 4 is CALCIUM ION (three-letter code: CA) (formula: Ca).

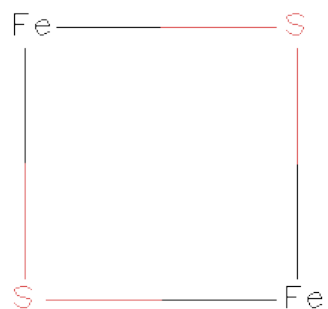
Mol	Chain	Residues	Atoms		ZeroOcc	AltConf
4	B	1	Total	Ca	0	0
			1	1		
4	A	1	Total	Ca	0	0
			1	1		

- Molecule 5 is 1,1'-HEXANE-1,6-DIYLDIPYRROLIDINE-2,5-DIONE (three-letter code: 1N0) (formula: C₁₄H₂₀N₂O₄).



Mol	Chain	Residues	Atoms				ZeroOcc	AltConf
5	A	1	Total	C	N	O	0	0
			20	14	2	4		

- Molecule 6 is FE2/S2 (INORGANIC) CLUSTER (three-letter code: FES) (formula: Fe₂S₂).



Mol	Chain	Residues	Atoms			ZeroOcc	AltConf
6	C	1	Total	Fe	S	0	0
			4	2	2		
6	D	1	Total	Fe	S	0	0
			4	2	2		

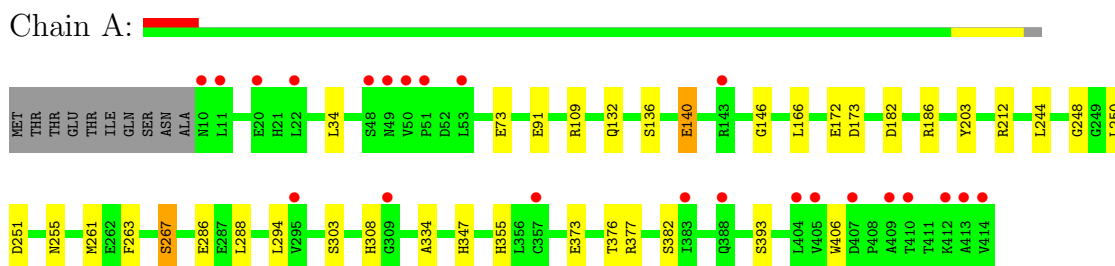
- Molecule 7 is water.

Mol	Chain	Residues	Atoms		ZeroOcc	AltConf
7	A	98	Total	O	0	0
			98	98		
7	B	155	Total	O	0	0
			155	155		
7	C	27	Total	O	0	0
			27	27		
7	D	30	Total	O	0	0
			30	30		

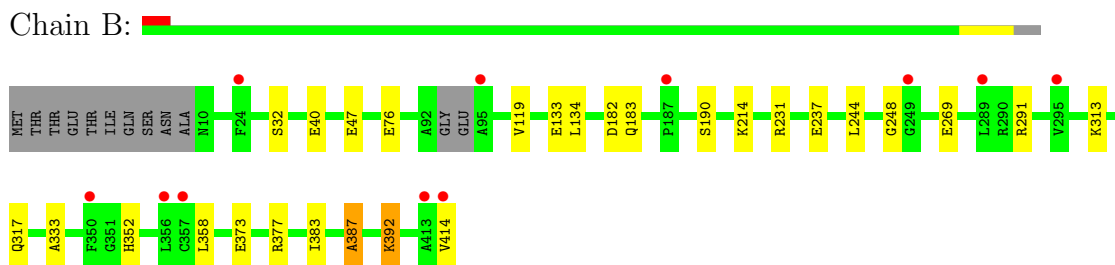
3 Residue-property plots

These plots are drawn for all protein, RNA and DNA chains in the entry. The first graphic for a chain summarises the proportions of errors displayed in the second graphic. The second graphic shows the sequence view annotated by issues in geometry and electron density. Residues are color-coded according to the number of geometric quality criteria for which they contain at least one outlier: green = 0, yellow = 1, orange = 2 and red = 3 or more. A red dot above a residue indicates a poor fit to the electron density ($RSRZ > 2$). Stretches of 2 or more consecutive residues without any outlier are shown as a green connector. Residues present in the sample, but not in the model, are shown in grey.

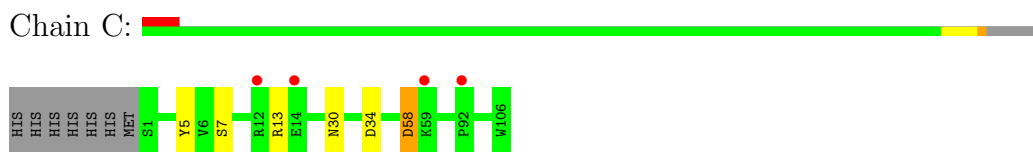
• Molecule 1: Camphor 5-monooxygenase



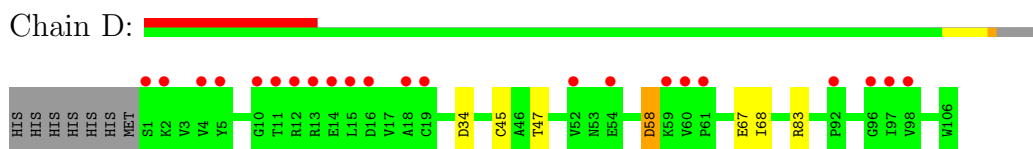
• Molecule 1: Camphor 5-monooxygenase



• Molecule 2: Putidaredoxin



• Molecule 2: Putidaredoxin



4 Data and refinement statistics

Property	Value	Source
Space group	P 1 21 1	Depositor
Cell constants a, b, c, α , β , γ	58.68Å 110.05Å 86.50Å 90.00° 109.51° 90.00°	Depositor
Resolution (Å)	39.01 – 2.20 39.01 – 2.20	Depositor EDS
% Data completeness (in resolution range)	97.8 (39.01-2.20) 97.9 (39.01-2.20)	Depositor EDS
R_{merge}	0.09	Depositor
R_{sym}	0.09	Depositor
$\langle I/\sigma(I) \rangle$ ¹	19.19 (at 2.20Å)	Xtriage
Refinement program	PHENIX (phenix.refine: 1.8.2_1309)	Depositor
R, R_{free}	0.205 , 0.266 0.208 , 0.265	Depositor DCC
R_{free} test set	2609 reflections (5.08%)	DCC
Wilson B-factor (Å ²)	27.2	Xtriage
Anisotropy	0.347	Xtriage
Bulk solvent k_{sol} (e/Å ³), B_{sol} (Å ²)	0.37 , 46.1	EDS
Estimated twinning fraction	0.031 for h,-k,-h-l	Xtriage
L-test for twinning	$\langle L \rangle = 0.48$, $\langle L^2 \rangle = 0.32$	Xtriage
Outliers	3 of 51461 reflections (0.006%)	Xtriage
F_o, F_c correlation	0.94	EDS
Total number of atoms	8399	wwPDB-VP
Average B, all atoms (Å ²)	54.0	wwPDB-VP

Xtriage's analysis on translational NCS is as follows: *The largest off-origin peak in the Patterson function is 5.45% of the height of the origin peak. No significant pseudotranslation is detected.*

¹Intensities estimated from amplitudes.

5 Model quality

5.1 Standard geometry

Bond lengths and bond angles in the following residue types are not validated in this section: HEM, CA, 1N0, FES

The Z score for a bond length (or angle) is the number of standard deviations the observed value is removed from the expected value. A bond length (or angle) with $|Z| > 5$ is considered an outlier worth inspection. RMSZ is the root-mean-square of all Z scores of the bond lengths (or angles).

Mol	Chain	Bond lengths		Bond angles	
		RMSZ	# Z >5	RMSZ	# Z >5
1	A	0.46	0/3283	0.59	0/4461
1	B	0.51	0/3263	0.64	0/4434
2	C	0.47	0/803	0.62	0/1090
2	D	0.48	0/803	0.60	0/1090
All	All	0.48	0/8152	0.61	0/11075

There are no bond length outliers.

There are no bond angle outliers.

There are no chirality outliers.

There are no planarity outliers.

5.2 Close contacts

In the following table, the Non-H and H(model) columns list the number of non-hydrogen atoms and hydrogen atoms in the chain respectively. The H(added) column lists the number of hydrogens added by MolProbity. The Clashes column lists the number of clashes within the asymmetric unit, and the number in parentheses is this value normalized per 1000 atoms of the molecule in the chain. The Symm-Clashes column gives symmetry related clashes, in the same way as for the Clashes column.

Mol	Chain	Non-H	H(model)	H(added)	Clashes	Symm-Clashes
1	A	3204	0	0	21	0
1	B	3185	0	0	13	0
2	C	792	0	0	5	0
2	D	792	0	0	4	0
3	A	43	0	30	3	0
3	B	43	0	30	3	0
4	A	1	0	0	0	0
4	B	1	0	0	0	0

Continued on next page...

Continued from previous page...

Mol	Chain	Non-H	H(model)	H(added)	Clashes	Symm-Clashes
5	A	20	0	17	0	0
6	C	4	0	0	0	0
6	D	4	0	0	0	0
7	A	98	0	0	7	0
7	B	155	0	0	7	0
7	C	27	0	0	0	0
7	D	30	0	0	0	0
All	All	8399	0	77	48	0

Clashscore is defined as the number of clashes calculated for the entry per 1000 atoms (including hydrogens) of the entry. The overall clashscore for this entry is 6.

All (48) close contacts within the same asymmetric unit are listed below.

Atom-1	Atom-2	Distance(Å)	Clash(Å)
3:A:501:HEM:HBC2	3:A:501:HEM:HHD	1.64	0.78
1:B:183:GLN:NE2	1:B:190:SER:OG	2.25	0.70
3:B:501:HEM:HBC2	3:B:501:HEM:HHD	1.75	0.69
1:B:47:GLU:O	7:B:693:HOH:O	2.11	0.67
1:B:392:LYS:NZ	7:B:658:HOH:O	2.29	0.66
1:B:269:GLU:OE2	7:B:656:HOH:O	2.15	0.63
1:A:263:PHE:O	1:A:267:SER:OG	2.19	0.61
1:A:173:ASP:OD2	1:A:203:TYR:OH	2.21	0.59
1:A:109:ARG:NH2	7:A:648:HOH:O	2.35	0.58
1:B:333:ALA:N	7:B:668:HOH:O	2.37	0.57
2:D:58:ASP:OD1	2:D:58:ASP:N	2.38	0.57
1:A:355:HIS:ND1	3:A:501:HEM:O2D	2.39	0.55
1:A:212:ARG:NH1	7:A:626:HOH:O	2.40	0.55
1:A:34:LEU:O	7:A:670:HOH:O	2.18	0.54
1:A:136:SER:O	1:A:140:GLU:N	2.41	0.54
1:A:251:ASP:O	1:A:255:ASN:ND2	2.42	0.53
1:A:109:ARG:NH1	7:A:637:HOH:O	2.42	0.51
1:A:286:GLU:OE1	1:A:347:HIS:NE2	2.44	0.51
2:C:34:ASP:N	2:C:34:ASP:OD1	2.44	0.50
1:A:334:ALA:N	7:A:635:HOH:O	2.46	0.49
2:C:58:ASP:OD1	2:C:58:ASP:N	2.44	0.49
1:A:73:GLU:OE2	1:A:308:HIS:NE2	2.46	0.48
1:B:231:ARG:NH2	1:B:237:GLU:OE2	2.47	0.48
2:D:34:ASP:OD1	2:D:34:ASP:N	2.47	0.47
1:A:146:GLY:O	1:A:406:TRP:N	2.48	0.47
1:B:313:LYS:NZ	7:B:609:HOH:O	2.47	0.47
1:B:244:LEU:O	1:B:248:GLY:N	2.48	0.47
1:A:172:GLU:OE1	1:A:172:GLU:N	2.47	0.47

Continued on next page...

Continued from previous page...

Atom-1	Atom-2	Distance(Å)	Clash(Å)
1:A:132:GLN:O	1:A:136:SER:OG	2.32	0.47
3:B:501:HEM:HBB2	3:B:501:HEM:HHC	1.97	0.46
3:B:501:HEM:HBC2	3:B:501:HEM:CHD	2.44	0.44
1:B:76:GLU:OE2	1:B:352:HIS:NE2	2.50	0.44
1:B:182:ASP:OD1	7:B:751:HOH:O	2.21	0.44
1:A:244:LEU:O	1:A:248:GLY:N	2.51	0.44
1:A:182:ASP:O	1:A:186:ARG:N	2.50	0.44
2:C:5:TYR:N	2:C:13:ARG:O	2.50	0.44
2:D:45:CYS:SG	2:D:47:THR:OG1	2.75	0.44
1:A:91:GLU:OE1	1:A:91:GLU:N	2.52	0.43
1:B:387:ALA:N	7:B:743:HOH:O	2.53	0.42
1:B:40:GLU:OE2	1:B:291:ARG:NH2	2.53	0.42
2:C:13:ARG:NH1	2:C:30:ASN:O	2.53	0.41
1:A:393:SER:N	7:A:609:HOH:O	2.53	0.41
2:C:7:SER:OG	2:C:34:ASP:OD2	2.38	0.41
1:A:373:GLU:OE1	1:A:377:ARG:NH1	2.54	0.40
1:B:373:GLU:OE1	1:B:377:ARG:NH1	2.54	0.40
1:A:109:ARG:NE	7:A:648:HOH:O	2.54	0.40
3:A:501:HEM:HHA	3:A:501:HEM:HBD1	2.02	0.40
2:D:67:GLU:OE2	2:D:83:ARG:NE	2.54	0.40

There are no symmetry-related clashes.

5.3 Torsion angles

5.3.1 Protein backbone ⓘ

In the following table, the Percentiles column shows the percent Ramachandran outliers of the chain as a percentile score with respect to all X-ray entries followed by that with respect to entries of similar resolution. The Analysed column shows the number of residues for which the backbone conformation was analysed, and the total number of residues.

Mol	Chain	Analysed	Favoured	Allowed	Outliers	Percentiles	
1	A	403/415 (97%)	375 (93%)	28 (7%)	0	100	100
1	B	399/415 (96%)	382 (96%)	16 (4%)	1 (0%)	50	53
2	C	104/113 (92%)	102 (98%)	2 (2%)	0	100	100
2	D	104/113 (92%)	102 (98%)	2 (2%)	0	100	100
All	All	1010/1056 (96%)	961 (95%)	48 (5%)	1 (0%)	59	66

All (1) Ramachandran outliers are listed below:

Mol	Chain	Res	Type
1	B	387	ALA

5.3.2 Protein sidechains ⓘ

In the following table, the Percentiles column shows the percent sidechain outliers of the chain as a percentile score with respect to all X-ray entries followed by that with respect to entries of similar resolution. The Analysed column shows the number of residues for which the sidechain conformation was analysed, and the total number of residues.

Mol	Chain	Analysed	Rotameric	Outliers	Percentiles	
1	A	349/358 (98%)	339 (97%)	10 (3%)	55	66
1	B	347/358 (97%)	337 (97%)	10 (3%)	55	66
2	C	89/96 (93%)	88 (99%)	1 (1%)	84	92
2	D	89/96 (93%)	87 (98%)	2 (2%)	64	76
All	All	874/908 (96%)	851 (97%)	23 (3%)	59	70

All (23) residues with a non-rotameric sidechain are listed below:

Mol	Chain	Res	Type
1	A	140	GLU
1	A	166	LEU
1	A	250	LEU
1	A	261	MET
1	A	267	SER
1	A	288	LEU
1	A	294	LEU
1	A	303	SER
1	A	376	THR
1	A	382	SER
1	B	32	SER
1	B	119	VAL
1	B	133	GLU
1	B	134	LEU
1	B	214	LYS
1	B	317	GLN
1	B	358	LEU
1	B	383	ILE
1	B	392	LYS
1	B	414	VAL
2	C	58	ASP
2	D	58	ASP

Continued on next page...

Continued from previous page...

Mol	Chain	Res	Type
2	D	68	ILE

Some sidechains can be flipped to improve hydrogen bonding and reduce clashes. There are no such sidechains identified.

5.3.3 RNA ⓘ

There are no RNA chains in this entry.

5.4 Non-standard residues in protein, DNA, RNA chains ⓘ

There are no non-standard protein/DNA/RNA residues in this entry.

5.5 Carbohydrates ⓘ

There are no carbohydrates in this entry.

5.6 Ligand geometry ⓘ

Of 7 ligands modelled in this entry, 2 are monoatomic - leaving 5 for Mogul analysis.

In the following table, the Counts columns list the number of bonds (or angles) for which Mogul statistics could be retrieved, the number of bonds (or angles) that are observed in the model and the number of bonds (or angles) that are defined in the chemical component dictionary. The Link column lists molecule types, if any, to which the group is linked. The Z score for a bond length (or angle) is the number of standard deviations the observed value is removed from the expected value. A bond length (or angle) with $|Z| > 2$ is considered an outlier worth inspection. RMSZ is the root-mean-square of all Z scores of the bond lengths (or angles).

Mol	Type	Chain	Res	Link	Bond lengths			Bond angles		
					Counts	RMSZ	$\# Z > 2$	Counts	RMSZ	$\# Z > 2$
3	HEM	A	501	1,7	49,50,50	2.77	18 (36%)	46,82,82	2.40	13 (28%)
5	1N0	A	503	1,2	21,21,21	1.32	2 (9%)	28,28,28	2.31	6 (21%)
3	HEM	B	501	1,7	49,50,50	2.46	17 (34%)	46,82,82	2.27	8 (17%)
6	FES	C	201	2	0,4,4	0.00	-	0,4,4	0.00	-
6	FES	D	201	2	0,4,4	0.00	-	0,4,4	0.00	-

In the following table, the Chirals column lists the number of chiral outliers, the number of chiral centers analysed, the number of these observed in the model and the number defined in the chemical component dictionary. Similar counts are reported in the Torsion and Rings columns. '-' means

no outliers of that kind were identified.

Mol	Type	Chain	Res	Link	Chirals	Torsions	Rings
3	HEM	A	501	1,7	-	0/14/114/114	0/0/8/8
5	1N0	A	503	1,2	-	0/9/35/35	0/2/2/2
3	HEM	B	501	1,7	-	0/14/114/114	0/0/8/8
6	FES	C	201	2	-	0/0/4/4	0/0/1/1
6	FES	D	201	2	-	0/0/4/4	0/0/1/1

All (37) bond length outliers are listed below:

Mol	Chain	Res	Type	Atoms	Z	Observed(Å)	Ideal(Å)
3	A	501	HEM	C3D-C4D	7.37	1.46	1.44
3	A	501	HEM	C2B-C1B	6.70	1.46	1.44
3	A	501	HEM	C3D-C2D	6.00	1.54	1.43
3	B	501	HEM	C3C-C2C	-5.88	1.33	1.43
3	B	501	HEM	C3D-C2D	5.88	1.54	1.43
3	A	501	HEM	C3C-C2C	-5.83	1.33	1.43
3	B	501	HEM	C3B-C2B	-5.80	1.33	1.43
3	B	501	HEM	FE-NB	5.16	2.16	1.97
3	A	501	HEM	C3C-CAC	5.10	1.56	1.40
3	B	501	HEM	C3B-CAB	4.78	1.55	1.40
3	B	501	HEM	C3C-CAC	4.67	1.55	1.40
3	A	501	HEM	C3B-C2B	-4.63	1.35	1.43
3	B	501	HEM	FE-NC	4.61	2.15	1.97
3	A	501	HEM	C3B-CAB	4.58	1.54	1.40
3	A	501	HEM	FE-NB	4.49	2.14	1.97
3	A	501	HEM	FE-ND	4.44	2.14	1.97
3	A	501	HEM	C4A-C3A	4.05	1.45	1.40
3	B	501	HEM	C4A-C3A	3.75	1.44	1.40
3	B	501	HEM	C3B-C4B	3.64	1.48	1.44
5	A	503	1N0	C15-N14	-3.58	1.32	1.38
3	A	501	HEM	CAA-C2A	3.02	1.57	1.52
5	A	503	1N0	C17-C16	-2.84	1.44	1.52
3	A	501	HEM	CMD-C2D	2.76	1.56	1.47
3	A	501	HEM	CHA-C4D	2.65	1.39	1.35
3	A	501	HEM	CMB-C2B	2.58	1.55	1.47
3	B	501	HEM	CMC-C2C	2.57	1.55	1.47
3	B	501	HEM	C3D-C4D	2.52	1.45	1.44
3	B	501	HEM	CMD-C2D	2.47	1.55	1.47
3	A	501	HEM	CHB-C1B	2.43	1.39	1.35
3	A	501	HEM	FE-NC	2.40	2.06	1.97
3	B	501	HEM	FE-ND	2.36	2.06	1.97
3	A	501	HEM	CMC-C2C	2.25	1.54	1.47
3	A	501	HEM	C4A-NA	2.18	1.40	1.36

Continued on next page...

Continued from previous page...

Mol	Chain	Res	Type	Atoms	Z	Observed(Å)	Ideal(Å)
3	B	501	HEM	C2B-C1B	2.16	1.45	1.44
3	B	501	HEM	CHB-C1B	2.13	1.38	1.35
3	B	501	HEM	CHA-C4D	2.03	1.38	1.35
3	B	501	HEM	CAA-C2A	2.02	1.55	1.52

All (27) bond angle outliers are listed below:

Mol	Chain	Res	Type	Atoms	Z	Observed(°)	Ideal(°)
3	B	501	HEM	C3B-C4B-NB	-9.22	107.40	114.00
3	A	501	HEM	C3B-C4B-NB	-9.00	107.56	114.00
5	A	503	1N0	C3-N4-C5	7.30	116.41	112.92
3	B	501	HEM	C4D-ND-C1D	7.12	112.45	105.16
5	A	503	1N0	C18-N14-C15	6.97	116.25	112.92
3	A	501	HEM	C4D-ND-C1D	6.77	112.09	105.16
3	A	501	HEM	C4A-C3A-C2A	4.26	109.96	107.00
3	A	501	HEM	C3A-C4A-NA	-3.91	106.46	109.41
3	A	501	HEM	C1B-NB-C4B	3.85	109.11	105.16
3	B	501	HEM	CHB-C1B-NB	3.82	129.55	124.31
3	A	501	HEM	CBD-CAD-C3D	-3.82	106.04	114.37
3	B	501	HEM	C1B-NB-C4B	3.69	108.94	105.16
3	A	501	HEM	CHD-C1D-ND	3.65	127.61	124.58
3	B	501	HEM	C2D-C1D-ND	-3.48	108.82	112.93
3	B	501	HEM	CHC-C4B-NB	-3.38	121.77	124.58
3	A	501	HEM	CMA-C3A-C4A	-3.17	123.74	128.62
5	A	503	1N0	O6-C5-N4	2.93	127.34	123.89
3	B	501	HEM	CHD-C4C-NC	2.87	127.23	124.73
3	A	501	HEM	C2D-C1D-ND	-2.85	109.56	112.93
5	A	503	1N0	O19-C18-N14	2.74	127.12	123.89
5	A	503	1N0	C16-C15-N14	-2.54	105.24	107.97
3	A	501	HEM	CHB-C4A-NA	2.47	128.71	124.58
3	B	501	HEM	C4C-NC-C1C	2.43	108.06	105.53
3	A	501	HEM	O2D-CGD-CBD	2.16	121.84	114.22
3	A	501	HEM	O1D-CGD-CBD	-2.14	115.66	123.03
5	A	503	1N0	O7-C3-N4	2.11	126.38	123.89
3	A	501	HEM	CMD-C2D-C3D	2.04	130.23	125.60

There are no chirality outliers.

There are no torsion outliers.

There are no ring outliers.

5.7 Other polymers ⓘ

There are no such residues in this entry.

5.8 Polymer linkage issues

There are no chain breaks in this entry.

6 Fit of model and data ⓘ

6.1 Protein, DNA and RNA chains ⓘ

In the following table, the column labelled ‘#RSRZ> 2’ contains the number (and percentage) of RSRZ outliers, followed by percent RSRZ outliers for the chain as percentile scores relative to all X-ray entries and entries of similar resolution. The OWAB column contains the minimum, median, 95th percentile and maximum values of the occupancy-weighted average B-factor per residue. The column labelled ‘Q< 0.9’ lists the number of (and percentage) of residues with an average occupancy less than 0.9.

Mol	Chain	Analysed	<RSRZ>	#RSRZ>2	OWAB(Å ²)	Q<0.9
1	A	405/415 (97%)	0.65	23 (5%) 23 23	28, 54, 92, 126	0
1	B	403/415 (97%)	0.34	11 (2%) 52 52	25, 43, 70, 99	0
2	C	106/113 (93%)	0.52	4 (3%) 38 39	33, 56, 85, 98	0
2	D	106/113 (93%)	1.07	22 (20%) 1 1	31, 67, 97, 111	0
All	All	1020/1056 (96%)	0.56	60 (5%) 22 21	25, 50, 90, 126	0

All (60) RSRZ outliers are listed below:

Mol	Chain	Res	Type	RSRZ
1	A	414	VAL	8.8
1	A	409	ALA	5.6
2	D	10	GLY	5.5
1	A	49	ASN	5.3
1	B	414	VAL	4.9
2	D	15	LEU	4.8
2	D	59	LYS	4.7
1	A	50	VAL	4.6
2	D	60	VAL	4.2
1	B	413	ALA	4.2
1	A	388	GLN	4.0
1	A	413	ALA	3.9
1	A	143	ARG	3.8
1	A	383	ILE	3.6
2	D	12	ARG	3.5
2	D	52	VAL	3.5
2	D	14	GLU	3.1
2	D	13	ARG	3.1
2	D	4	VAL	3.0
2	D	1	SER	3.0
1	A	22	LEU	3.0

Continued on next page...

Continued from previous page...

Mol	Chain	Res	Type	RSRZ
1	B	187	PRO	2.9
1	A	11	LEU	2.9
1	B	24	PHE	2.9
2	C	12	ARG	2.9
1	A	309	GLY	2.8
1	B	249	GLY	2.8
2	D	11	THR	2.7
1	B	356	LEU	2.7
2	D	54	GLU	2.7
2	C	59	LYS	2.6
1	A	48	SER	2.6
2	D	16	ASP	2.5
1	B	95	ALA	2.5
1	A	405	VAL	2.5
2	C	14	GLU	2.4
1	A	357	CYS	2.4
2	D	97	ILE	2.4
2	C	92	PRO	2.3
2	D	92	PRO	2.3
2	D	96	GLY	2.3
1	B	295	VAL	2.2
2	D	19	CYS	2.2
2	D	98	VAL	2.2
2	D	2	LYS	2.2
1	A	410	THR	2.2
1	A	295	VAL	2.2
1	B	350	PHE	2.2
1	A	53	LEU	2.2
1	A	10	ASN	2.2
1	A	51	PRO	2.1
1	A	407	ASP	2.1
2	D	61	PRO	2.1
1	A	20	GLU	2.1
2	D	18	ALA	2.1
1	A	404	LEU	2.1
1	B	357	CYS	2.1
2	D	5	TYR	2.0
1	A	412	LYS	2.0
1	B	289	LEU	2.0

6.2 Non-standard residues in protein, DNA, RNA chains

There are no non-standard protein/DNA/RNA residues in this entry.

6.3 Carbohydrates

There are no carbohydrates in this entry.

6.4 Ligands

In the following table, the Atoms column lists the number of modelled atoms in the group and the number defined in the chemical component dictionary. LLDF column lists the quality of electron density of the group with respect to its neighbouring residues in protein, DNA or RNA chains. The B-factors column lists the minimum, median, 95th percentile and maximum values of B factors of atoms in the group. The column labelled 'Q< 0.9' lists the number of atoms with occupancy less than 0.9.

Mol	Type	Chain	Res	Atoms	RSR	LLDF	B-factors(Å ²)	Q<0.9
5	1N0	A	503	20/20	0.37	3.32	84,113,120,120	0
3	HEM	A	501	43/43	0.20	0.67	15,28,40,46	0
3	HEM	B	501	43/43	0.22	0.63	19,28,39,52	0
6	FES	C	201	4/4	0.10	-1.20	30,33,33,34	0
6	FES	D	201	4/4	0.10	-1.97	35,40,40,47	0
4	CA	B	502	1/1	0.07	-2.85	30,30,30,30	0
4	CA	A	502	1/1	0.04	-5.65	30,30,30,30	0

6.5 Other polymers

There are no such residues in this entry.