



# Full wwPDB X-ray Structure Validation Report

Feb 27, 2014 – 06:49 AM GMT

PDB ID : 1K0C  
Title : Ure2p in complex with S-p-nitrobenzylglutathione  
Authors : Bousset, L.; Belrhali, H.; Melki, R.; Morera, S.  
Deposited on : 2001-09-19  
Resolution : 2.50 Å(reported)

This is a full wwPDB validation report for a publicly released PDB entry.  
We welcome your comments at [validation@mail.wwpdb.org](mailto:validation@mail.wwpdb.org)  
A user guide is available at <http://wwpdb.org/ValidationPDFNotes.html>

---

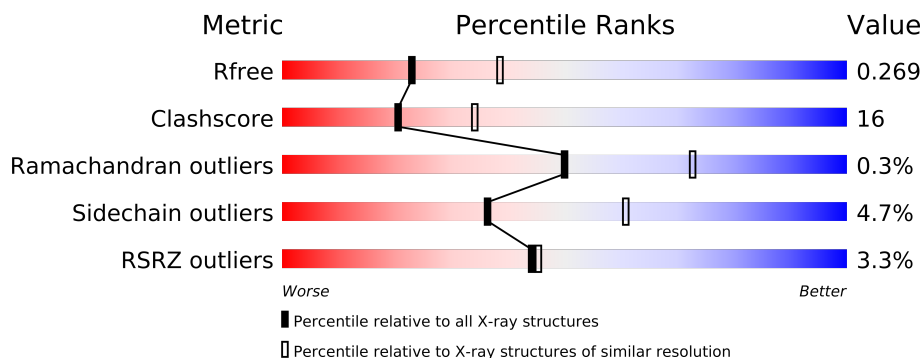
The following versions of software and data (see [references](#)) were used in the production of this report:

MolProbity : 4.02b-467  
Mogul : 1.15 2013  
Xtriage (Phenix) : dev-1323  
EDS : stable22639  
Percentile statistics : 21963  
Refmac : 5.8.0049  
CCP4 : 6.3.0 (Settle)  
Ideal geometry (proteins) : Engh & Huber (2001)  
Ideal geometry (DNA, RNA) : Parkinson et. al. (1996)  
Validation Pipeline (wwPDB-VP) : stable22683

# 1 Overall quality at a glance

The reported resolution of this entry is 2.50 Å.

Percentile scores (ranging between 0-100) for global validation metrics of the entry are shown in the following graphic. The table shows the number of entries on which the scores are based.



Metric	Whole archive (#Entries)	Similar resolution (#Entries, resolution range(Å))
$R_{free}$	66092	2784 (2.50-2.50)
Clashscore	79885	3562 (2.50-2.50)
Ramachandran outliers	78287	3480 (2.50-2.50)
Sidechain outliers	78261	3482 (2.50-2.50)
RSRZ outliers	66119	2785 (2.50-2.50)

The table below summarises the geometric issues observed across the polymeric chains and their fit to the electron density. The red, orange, yellow and green segments on the lower bar indicate the fraction of residues that contain outliers for  $\geq 3$ , 2, 1 and 0 types of geometric quality criteria. The upper red bar (where present) indicates the fraction of residues that have poor fit to the electron density.

Mol	Chain	Length	Quality of chain
1	A	260	
1	B	260	
1	C	260	
1	D	260	

The following table lists non-polymeric compounds that are outliers for geometric or electron-density-fit criteria:

Mol	Type	Chain	Res	Geometry	Electron density
2	GTB	B	356	-	X

## 2 Entry composition i

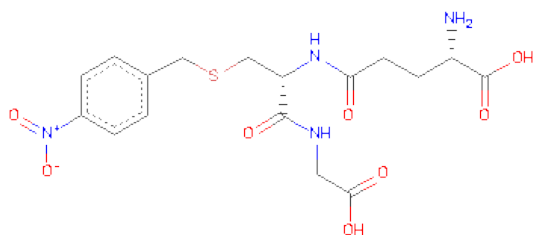
There are 4 unique types of molecules in this entry. The entry contains 7899 atoms, of which 0 are hydrogen and 0 are deuterium.

In the tables below, the ZeroOcc column contains the number of atoms modelled with zero occupancy, the AltConf column contains the number of residues with at least one atom in alternate conformation and the Trace column contains the number of residues modelled with at most 2 atoms.

- Molecule 1 is a protein called URE2 PROTEIN.

Mol	Chain	Residues	Atoms					ZeroOcc	AltConf	Trace
1	A	228	Total	C	N	O	S	0	0	0
			1861	1213	317	325	6			
1	B	231	Total	C	N	O	S	0	0	0
			1882	1221	326	329	6			
1	C	239	Total	C	N	O	S	0	0	0
			1956	1269	338	343	6			
1	D	236	Total	C	N	O	S	0	0	0
			1929	1254	331	338	6			

- Molecule 2 is S-(P-NITROBENZYL)GLUTATHIONE (three-letter code: GTB) (formula: C<sub>17</sub>H<sub>22</sub>N<sub>4</sub>O<sub>8</sub>S).



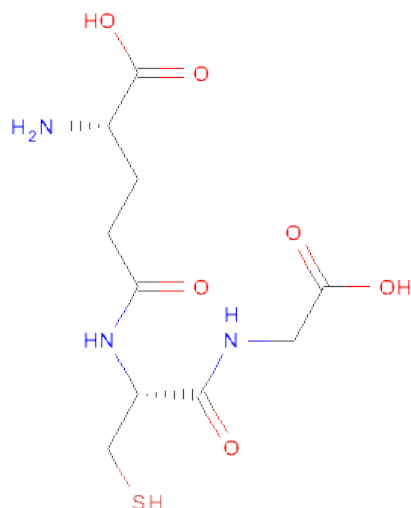
Mol	Chain	Residues	Atoms					ZeroOcc	AltConf
2	A	1	Total	C	N	O	S	0	0
			30	17	4	8	1		
2	B	1	Total	C	N	O	S	0	0
			30	17	4	8	1		

*Continued on next page...*

*Continued from previous page...*

Mol	Chain	Residues	Atoms					ZeroOcc	AltConf
2	C	1	Total	C	N	O	S	0	0
			30	17	4	8	1		

- Molecule 3 is GLUTATHIONE (three-letter code: GSH) (formula: C<sub>10</sub>H<sub>17</sub>N<sub>3</sub>O<sub>6</sub>S).



Mol	Chain	Residues	Atoms					ZeroOcc	AltConf
3	D	1	Total	C	N	O	S	0	0
			20	10	3	6	1		

- Molecule 4 is water.

Mol	Chain	Residues	Atoms		ZeroOcc	AltConf
4	A	33	Total	O	0	0
			33	33		
4	B	29	Total	O	0	0
			29	29		
4	C	45	Total	O	0	0
			45	45		
4	D	54	Total	O	0	0
			54	54		

### 3 Residue-property plots

These plots are drawn for all protein, RNA and DNA chains in the entry. The first graphic for a chain summarises the proportions of errors displayed in the second graphic. The second graphic shows the sequence view annotated by issues in geometry and electron density. Residues are color-coded according to the number of geometric quality criteria for which they contain at least one outlier: green = 0, yellow = 1, orange = 2 and red = 3 or more. A red dot above a residue indicates a poor fit to the electron density ( $RSRZ > 2$ ). Stretches of 2 or more consecutive residues without any outlier are shown as a green connector. Residues present in the sample, but not in the model, are shown in grey.

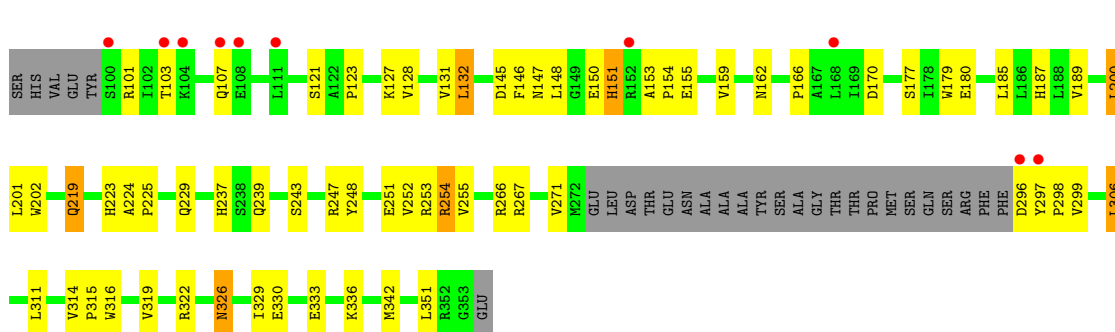
#### • Molecule 1: URE2 PROTEIN

Chain A:



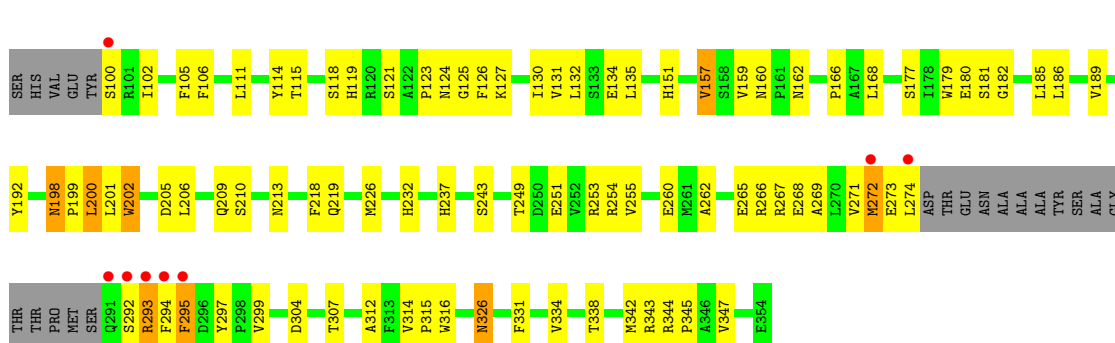
#### • Molecule 1: URE2 PROTEIN

Chain B:



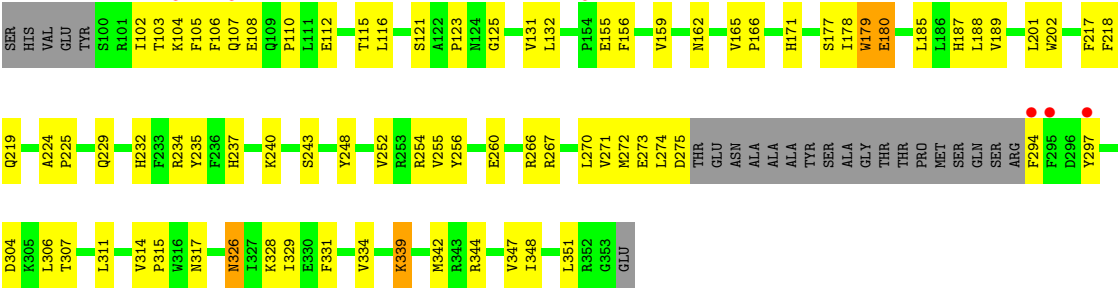
#### • Molecule 1: URE2 PROTEIN

Chain C:



● Molecule 1: URE2 PROTEIN

Chain D:



## 4 Data and refinement statistics

Property	Value	Source
Space group	P 21 21 21	Depositor
Cell constants a, b, c, $\alpha$ , $\beta$ , $\gamma$	54.74Å 123.21Å 168.18Å 90.00° 90.00° 90.00°	Depositor
Resolution (Å)	20.00 – 2.50 19.95 – 2.50	Depositor EDS
% Data completeness (in resolution range)	(Not available) (20.00-2.50) 93.9 (19.95-2.50)	Depositor EDS
$R_{merge}$	(Not available)	Depositor
$R_{sym}$	0.08	Depositor
$\langle I/\sigma(I) \rangle$ <sup>1</sup>	2.45 (at 2.50Å)	Xtriage
Refinement program	CNS 1.0	Depositor
R, $R_{free}$	0.214 , 0.267 0.216 , 0.269	Depositor DCC
$R_{free}$ test set	1879 reflections (4.98%)	DCC
Wilson B-factor (Å <sup>2</sup> )	34.8	Xtriage
Anisotropy	0.207	Xtriage
Bulk solvent $k_{sol}$ (e/Å <sup>3</sup> ), $B_{sol}$ (Å <sup>2</sup> )	0.36 , 23.3	EDS
Estimated twinning fraction	No twinning to report.	Xtriage
L-test for twinning	$\langle  L  \rangle = 0.49$ , $\langle L^2 \rangle = 0.32$	Xtriage
Outliers	0 of 37723 reflections	Xtriage
$F_o, F_c$ correlation	0.93	EDS
Total number of atoms	7899	wwPDB-VP
Average B, all atoms (Å <sup>2</sup> )	36.0	wwPDB-VP

Xtriage's analysis on translational NCS is as follows: *The largest off-origin peak in the Patterson function is 10.65% of the height of the origin peak. No significant pseudotranslation is detected.*

<sup>1</sup>Intensities estimated from amplitudes.

## 5 Model quality

### 5.1 Standard geometry

Bond lengths and bond angles in the following residue types are not validated in this section: GSH, GTB

The Z score for a bond length (or angle) is the number of standard deviations the observed value is removed from the expected value. A bond length (or angle) with  $|Z| > 5$  is considered an outlier worth inspection. RMSZ is the root-mean-square of all Z scores of the bond lengths (or angles).

Mol	Chain	Bond lengths		Bond angles	
		RMSZ	$\# Z  > 5$	RMSZ	$\# Z  > 5$
1	A	0.39	0/1915	0.58	0/2602
1	B	0.38	0/1935	0.58	0/2627
1	C	0.40	0/2011	0.58	0/2728
1	D	0.39	0/1984	0.59	0/2693
All	All	0.39	0/7845	0.59	0/10650

There are no bond length outliers.

There are no bond angle outliers.

There are no chirality outliers.

There are no planarity outliers.

### 5.2 Close contacts

In the following table, the Non-H and H(model) columns list the number of non-hydrogen atoms and hydrogen atoms in the chain respectively. The H(added) column lists the number of hydrogens added by MolProbity. The Clashes column lists the number of clashes within the asymmetric unit, and the number in parentheses is this value normalized per 1000 atoms of the molecule in the chain. The Symm-Clashes column gives symmetry related clashes, in the same way as for the Clashes column.

Mol	Chain	Non-H	H(model)	H(added)	Clashes	Symm-Clashes
1	A	1861	0	1830	69	0
1	B	1882	0	1855	53	0
1	C	1956	0	1922	74	0
1	D	1929	0	1894	60	0
2	A	30	0	20	0	0
2	B	30	0	20	0	0
2	C	30	0	20	0	0
3	D	20	0	15	0	0

*Continued on next page...*



*Continued from previous page...*

Mol	Chain	Non-H	H(model)	H(added)	Clashes	Symm-Clashes
4	A	33	0	0	2	0
4	B	29	0	0	1	0
4	C	45	0	0	4	0
4	D	54	0	0	0	0
All	All	7899	0	7576	241	0

Clashscore is defined as the number of clashes calculated for the entry per 1000 atoms (including hydrogens) of the entry. The overall clashscore for this entry is 16.

All (241) close contacts within the same asymmetric unit are listed below.

Atom-1	Atom-2	Distance(Å)	Clash(Å)
1:C:124:ASN:HB3	1:C:166:PRO:HD3	1.47	0.96
1:D:314:VAL:HG13	1:D:315:PRO:HD3	1.46	0.94
1:D:266:ARG:NH2	1:D:304:ASP:H	1.72	0.88
1:D:266:ARG:HH22	1:D:304:ASP:H	1.20	0.86
1:C:293:ARG:HB3	1:C:293:ARG:NH1	1.99	0.78
1:D:314:VAL:CG1	1:D:315:PRO:HD3	2.14	0.76
1:C:198:ASN:HD22	1:C:199:PRO:HD2	1.50	0.75
1:C:334:VAL:O	1:C:338:THR:HG22	1.86	0.75
1:C:226:MET:HE2	1:C:251:GLU:HG2	1.68	0.74
1:C:226:MET:CE	1:C:251:GLU:HG2	2.18	0.74
1:A:171:HIS:HA	1:A:175:ASN:HD22	1.55	0.72
1:C:267:ARG:O	1:C:271:VAL:HG23	1.90	0.71
1:D:314:VAL:HG13	1:D:315:PRO:CD	2.22	0.69
1:A:131:VAL:HG21	1:A:185:LEU:HD22	1.73	0.68
1:C:260:GLU:OE1	1:C:331:PHE:HB3	1.94	0.68
1:B:179:TRP:O	1:B:180:GLU:HB2	1.93	0.68
1:A:103:THR:HG23	4:A:378:HOH:O	1.93	0.67
1:C:119:HIS:CD2	1:C:121:SER:H	2.13	0.67
1:C:119:HIS:HD2	1:C:121:SER:H	1.41	0.67
1:B:159:VAL:HG13	1:B:177:SER:OG	1.96	0.65
1:B:131:VAL:HG21	1:B:185:LEU:HD22	1.78	0.65
1:D:306:LEU:HD11	1:D:311:LEU:HG	1.77	0.65
1:C:179:TRP:O	1:C:180:GLU:HB2	1.97	0.64
1:D:311:LEU:O	1:D:314:VAL:HG12	1.98	0.64
1:B:296:ASP:OD1	1:B:336:LYS:HD3	1.98	0.63
1:A:205:ASP:OD2	1:A:207:ALA:HB3	1.98	0.63
1:B:145:ASP:OD1	1:B:147:ASN:HB3	2.00	0.62
1:C:254:ARG:HH12	1:D:162:ASN:ND2	1.97	0.62
1:A:145:ASP:CG	1:A:148:LEU:HD13	2.20	0.62
1:C:162:ASN:HD21	1:D:254:ARG:HH22	1.47	0.61
1:A:107:GLN:HA	1:A:107:GLN:HE21	1.65	0.61

*Continued on next page...*

*Continued from previous page...*

Atom-1	Atom-2	Distance(Å)	Clash(Å)
1:C:293:ARG:CB	1:C:293:ARG:HH11	2.14	0.61
1:D:218:PHE:CZ	1:D:255:VAL:HG13	2.35	0.61
1:A:179:TRP:O	1:A:180:GLU:HB2	2.00	0.61
1:C:198:ASN:HD22	1:C:199:PRO:CD	2.13	0.60
1:A:237:HIS:HE1	1:B:243:SER:OG	1.84	0.60
1:A:254:ARG:HH22	1:B:162:ASN:HD21	1.48	0.60
1:A:314:VAL:HB	1:A:315:PRO:HD3	1.82	0.60
1:A:160:ASN:ND2	1:A:162:ASN:H	2.00	0.60
1:B:103:THR:O	1:B:107:GLN:HG2	2.02	0.59
1:C:326:ASN:HD22	1:C:326:ASN:C	2.04	0.59
1:C:272:MET:HE2	1:C:273:GLU:HB2	1.85	0.59
1:D:267:ARG:O	1:D:271:VAL:HG23	2.03	0.59
1:C:131:VAL:HG21	1:C:185:LEU:HD22	1.83	0.58
1:A:210:SER:HA	4:A:361:HOH:O	2.03	0.58
1:A:232:HIS:NE2	1:A:237:HIS:HD2	2.01	0.58
1:C:237:HIS:HE1	1:D:243:SER:OG	1.86	0.58
1:A:159:VAL:HG13	1:A:177:SER:OG	2.04	0.58
1:A:266:ARG:HB3	1:A:299:VAL:CG1	2.34	0.57
1:D:131:VAL:HG21	1:D:185:LEU:HD22	1.86	0.57
1:C:265:GLU:HA	1:C:268:GLU:HB3	1.87	0.57
1:A:269:ALA:O	1:A:272:MET:HG2	2.04	0.57
1:D:232:HIS:NE2	1:D:237:HIS:HD2	2.02	0.57
1:C:127:LYS:HD2	1:C:312:ALA:HA	1.87	0.57
1:D:339:LYS:HA	1:D:339:LYS:NZ	2.20	0.56
1:C:206:LEU:HD13	4:C:396:HOH:O	2.04	0.56
1:D:339:LYS:HA	1:D:339:LYS:HZ3	1.71	0.56
1:D:156:PHE:O	1:D:159:VAL:HB	2.05	0.56
1:B:128:VAL:HG12	1:B:132:LEU:HD22	1.89	0.55
1:B:254:ARG:HH11	1:B:254:ARG:HB3	1.70	0.55
1:C:293:ARG:HB3	1:C:293:ARG:HH11	1.68	0.55
1:B:319:VAL:HG13	1:B:322:ARG:HD2	1.89	0.55
1:D:201:LEU:HA	1:D:307:THR:HA	1.88	0.55
1:A:121:SER:O	1:A:123:PRO:HD3	2.06	0.55
1:B:200:LEU:HD22	1:B:201:LEU:HG	1.88	0.55
1:B:326:ASN:C	1:B:326:ASN:HD22	2.09	0.55
1:D:179:TRP:O	1:D:180:GLU:HB2	2.07	0.55
1:D:326:ASN:ND2	1:D:329:ILE:H	2.03	0.55
1:B:342:MET:CE	1:B:342:MET:HA	2.37	0.54
1:C:266:ARG:HB2	1:C:299:VAL:CG1	2.38	0.54
1:B:251:GLU:O	1:B:255:VAL:HG13	2.08	0.54
1:B:224:ALA:HB3	1:B:225:PRO:HD3	1.89	0.54
1:D:108:GLU:O	1:D:108:GLU:HG3	2.07	0.54

*Continued on next page...*

*Continued from previous page...*

Atom-1	Atom-2	Distance(Å)	Clash(Å)
1:B:127:LYS:HD3	1:B:185:LEU:HD11	1.90	0.54
1:D:159:VAL:HG13	1:D:177:SER:OG	2.08	0.54
1:A:266:ARG:HB3	1:A:299:VAL:HG11	1.88	0.54
1:D:225:PRO:O	1:D:229:GLN:HG2	2.08	0.54
1:C:232:HIS:NE2	1:C:237:HIS:HD2	2.06	0.53
1:C:273:GLU:O	1:C:274:LEU:HG	2.09	0.53
1:A:123:PRO:HB2	1:A:316:TRP:CE2	2.44	0.53
1:C:293:ARG:NH1	1:C:293:ARG:CB	2.70	0.52
1:B:342:MET:HE1	1:B:351:LEU:HD11	1.91	0.52
1:C:134:GLU:OE1	1:C:344:ARG:HD3	2.10	0.52
1:A:311:LEU:O	1:A:314:VAL:HG23	2.08	0.52
1:D:155:GLU:HA	1:D:155:GLU:OE1	2.08	0.52
1:D:344:ARG:O	1:D:348:ILE:HG13	2.09	0.52
1:D:125:GLY:HA2	1:D:166:PRO:HB3	1.90	0.52
1:B:219:GLN:O	1:B:223:HIS:HB3	2.10	0.52
1:B:326:ASN:O	1:B:330:GLU:HG3	2.10	0.52
1:A:342:MET:HA	1:A:342:MET:CE	2.40	0.52
1:A:271:VAL:O	1:A:272:MET:HB3	2.09	0.51
1:B:306:LEU:HD21	1:B:311:LEU:HG	1.92	0.51
1:C:114:TYR:HB3	1:C:168:LEU:HD11	1.91	0.51
1:B:267:ARG:NH1	1:B:297:TYR:O	2.43	0.51
1:B:326:ASN:OD1	1:B:329:ILE:HD12	2.11	0.51
1:C:265:GLU:O	1:C:268:GLU:HB3	2.11	0.50
1:A:145:ASP:OD1	1:A:145:ASP:O	2.28	0.50
1:C:206:LEU:O	1:C:206:LEU:HD12	2.11	0.50
1:A:243:SER:CB	1:B:239:GLN:HE21	2.24	0.50
1:D:132:LEU:HD13	1:D:188:LEU:HD11	1.94	0.50
1:A:148:LEU:N	1:A:148:LEU:HD12	2.26	0.50
1:A:160:ASN:HD22	1:A:160:ASN:C	2.14	0.50
1:D:260:GLU:OE1	1:D:334:VAL:HG23	2.12	0.50
1:B:266:ARG:HB2	1:B:299:VAL:HG11	1.95	0.49
1:D:326:ASN:HD22	1:D:329:ILE:H	1.60	0.49
1:D:178:ILE:HD13	1:D:187:HIS:CG	2.47	0.49
1:A:232:HIS:NE2	1:A:237:HIS:CD2	2.80	0.49
1:C:181:SER:O	1:C:185:LEU:HG	2.13	0.49
1:A:107:GLN:HA	1:A:107:GLN:NE2	2.28	0.49
1:A:295:PHE:CD1	1:A:295:PHE:N	2.81	0.49
1:A:109:GLN:HE21	1:A:171:HIS:HE1	1.61	0.49
1:B:170:ASP:OD2	1:B:187:HIS:HE1	1.95	0.49
1:D:326:ASN:HD22	1:D:326:ASN:C	2.16	0.49
1:D:256:TYR:OH	1:D:317:ASN:ND2	2.46	0.48
1:B:254:ARG:HH12	1:B:255:VAL:HG12	1.77	0.48

*Continued on next page...*

*Continued from previous page...*

Atom-1	Atom-2	Distance(Å)	Clash(Å)
1:C:260:GLU:OE1	1:C:334:VAL:HG23	2.14	0.48
1:C:345:PRO:HD2	4:C:371:HOH:O	2.13	0.48
1:A:267:ARG:O	1:A:271:VAL:HG23	2.14	0.48
1:D:155:GLU:O	1:D:159:VAL:HG23	2.14	0.48
1:D:179:TRP:CD1	1:D:179:TRP:N	2.82	0.48
1:A:132:LEU:HD13	1:A:188:LEU:CD1	2.44	0.48
1:A:108:GLU:HG2	1:A:108:GLU:O	2.13	0.48
1:A:254:ARG:HH12	1:B:162:ASN:ND2	2.11	0.48
1:A:247:ARG:HH21	1:B:229:GLN:HE22	1.59	0.48
1:C:338:THR:O	1:C:342:MET:HG2	2.13	0.47
1:D:102:ILE:O	1:D:105:PHE:HB3	2.14	0.47
1:A:186:LEU:O	1:A:190:ASN:HB2	2.14	0.47
1:C:267:ARG:NH1	1:C:297:TYR:O	2.43	0.47
1:A:271:VAL:O	1:A:271:VAL:HG12	2.15	0.47
1:A:243:SER:OG	1:B:239:GLN:NE2	2.47	0.47
1:D:339:LYS:HZ3	1:D:342:MET:HB2	1.79	0.47
1:C:292:SER:N	1:C:295:PHE:HD2	2.13	0.47
1:C:201:LEU:HA	1:C:307:THR:HA	1.95	0.47
1:A:248:TYR:O	1:A:252:VAL:HG23	2.14	0.47
1:D:260:GLU:OE1	1:D:331:PHE:HB3	2.15	0.47
1:D:326:ASN:HD21	1:D:328:LYS:HB3	1.78	0.47
1:D:274:LEU:O	1:D:275:ASP:HB2	2.15	0.47
1:C:243:SER:OG	1:D:237:HIS:HE1	1.98	0.47
1:A:124:ASN:HB3	1:A:166:PRO:HD3	1.98	0.46
1:B:145:ASP:OD1	1:B:148:LEU:HD13	2.16	0.46
1:B:121:SER:O	1:B:123:PRO:HD3	2.16	0.46
1:A:109:GLN:HA	1:A:110:PRO:HD3	1.82	0.46
1:C:267:ARG:HB2	1:C:299:VAL:HG21	1.96	0.46
1:A:267:ARG:NH1	1:A:336:LYS:HD3	2.31	0.46
1:D:103:THR:O	1:D:107:GLN:HG3	2.15	0.46
1:A:128:VAL:HG12	1:A:132:LEU:HD22	1.97	0.46
1:D:121:SER:O	1:D:123:PRO:HD3	2.16	0.46
1:D:272:MET:C	1:D:274:LEU:H	2.19	0.45
1:C:123:PRO:HB2	1:C:316:TRP:CE2	2.51	0.45
1:C:125:GLY:HA2	1:C:166:PRO:HB3	1.98	0.45
1:A:229:GLN:HE22	1:B:247:ARG:HH21	1.64	0.45
1:C:205:ASP:O	1:C:209:GLN:HG3	2.16	0.45
1:C:135:LEU:HD23	1:C:200:LEU:HD13	1.98	0.45
1:B:179:TRP:N	1:B:179:TRP:CD1	2.84	0.45
1:D:248:TYR:O	1:D:252:VAL:HG23	2.17	0.45
1:C:179:TRP:CD1	1:C:179:TRP:N	2.85	0.45
1:B:189:VAL:HB	1:B:202:TRP:HB2	1.98	0.45

*Continued on next page...*

*Continued from previous page...*

Atom-1	Atom-2	Distance(Å)	Clash(Å)
1:C:232:HIS:NE2	1:C:237:HIS:CD2	2.85	0.45
1:D:234:ARG:HG2	1:D:235:TYR:CE1	2.51	0.45
1:D:232:HIS:NE2	1:D:237:HIS:CD2	2.84	0.44
1:A:186:LEU:HD21	1:A:213:ASN:HD21	1.82	0.44
1:C:314:VAL:HB	1:C:315:PRO:HD3	1.98	0.44
1:C:226:MET:HG3	1:C:251:GLU:HG2	1.98	0.44
1:B:266:ARG:HG2	1:B:266:ARG:HH11	1.82	0.44
1:C:292:SER:O	1:C:295:PHE:HB2	2.17	0.44
1:C:192:TYR:CE2	1:C:200:LEU:HB2	2.53	0.44
1:B:146:PHE:CD2	1:B:151:HIS:ND1	2.86	0.44
1:A:261:MET:HG2	1:A:265:GLU:OE1	2.17	0.44
1:D:165:VAL:HB	1:D:166:PRO:HA	2.00	0.44
1:B:253:ARG:NH2	4:B:359:HOH:O	2.50	0.44
1:A:271:VAL:O	1:A:272:MET:CB	2.65	0.44
1:D:106:PHE:CD1	1:D:155:GLU:HB3	2.53	0.44
1:B:223:HIS:HE1	1:B:316:TRP:HB2	1.82	0.44
1:A:198:ASN:HD22	1:A:199:PRO:HD2	1.82	0.44
1:B:314:VAL:HB	1:B:315:PRO:HD3	1.99	0.44
1:B:342:MET:HE3	1:B:342:MET:HA	2.00	0.44
1:D:274:LEU:HD13	1:D:294:PHE:CD1	2.53	0.44
1:C:182:GLY:HA3	1:D:217:PHE:CE2	2.53	0.44
1:C:159:VAL:HG13	1:C:177:SER:OG	2.18	0.44
1:C:100:SER:O	1:C:102:ILE:N	2.44	0.44
1:D:224:ALA:HB3	1:D:225:PRO:HD3	1.99	0.43
1:B:123:PRO:HB2	1:B:316:TRP:CE2	2.53	0.43
1:B:267:ARG:NH2	1:B:333:GLU:OE1	2.51	0.43
1:C:249:THR:HG22	1:C:253:ARG:NH1	2.33	0.43
1:A:342:MET:HE1	1:A:347:VAL:CG1	2.49	0.43
1:D:270:LEU:HD21	1:D:297:TYR:HD2	1.83	0.43
1:C:105:PHE:CZ	1:C:115:THR:HG21	2.53	0.43
1:C:102:ILE:O	1:C:106:PHE:HD1	2.01	0.43
1:A:332:PRO:O	1:A:335:TYR:HB3	2.19	0.43
1:C:124:ASN:HB3	1:C:166:PRO:CD	2.32	0.43
1:C:262:ALA:O	1:C:266:ARG:HG2	2.18	0.43
1:C:273:GLU:O	1:C:273:GLU:HG2	2.18	0.43
1:B:266:ARG:HB2	1:B:299:VAL:CG1	2.49	0.43
1:A:189:VAL:HB	1:A:202:TRP:HB2	1.99	0.43
1:C:294:PHE:HD1	1:C:297:TYR:CD1	2.37	0.43
1:C:269:ALA:O	1:C:272:MET:HG3	2.18	0.43
1:A:148:LEU:CD1	1:A:148:LEU:H	2.32	0.43
1:A:189:VAL:HG23	1:A:190:ASN:N	2.34	0.43
1:A:147:ASN:C	1:A:149:GLY:H	2.21	0.43

*Continued on next page...*

*Continued from previous page...*

Atom-1	Atom-2	Distance(Å)	Clash(Å)
1:D:105:PHE:CZ	1:D:115:THR:HG21	2.54	0.42
1:A:132:LEU:HD13	1:A:188:LEU:HD11	2.01	0.42
1:D:270:LEU:HD21	1:D:297:TYR:CD2	2.54	0.42
1:C:210:SER:HA	4:C:383:HOH:O	2.20	0.42
1:A:270:LEU:HD21	1:A:297:TYR:HB2	2.01	0.42
1:A:237:HIS:CE1	1:B:243:SER:OG	2.69	0.42
1:C:344:ARG:HA	1:C:345:PRO:HD3	1.89	0.42
1:A:319:VAL:O	1:A:322:ARG:HG3	2.20	0.42
1:A:118:SER:OG	1:A:125:GLY:HA3	2.19	0.42
1:C:126:PHE:O	1:C:130:ILE:HG13	2.19	0.42
1:C:118:SER:OG	1:C:119:HIS:N	2.52	0.41
1:A:261:MET:O	1:A:265:GLU:HG3	2.20	0.41
1:C:343:ARG:NH2	4:C:387:HOH:O	2.52	0.41
1:C:162:ASN:ND2	1:D:254:ARG:HH12	2.18	0.41
1:C:292:SER:H	1:C:295:PHE:HD2	1.67	0.41
1:D:344:ARG:HB2	1:D:347:VAL:HG23	2.02	0.41
1:B:271:VAL:HG12	1:B:271:VAL:O	2.20	0.41
1:D:110:PRO:HD2	1:D:171:HIS:CE1	2.56	0.41
1:C:157:VAL:HA	1:C:160:ASN:O	2.20	0.41
1:C:344:ARG:HB2	1:C:347:VAL:CG2	2.51	0.41
1:A:243:SER:OG	1:B:237:HIS:HE1	2.04	0.41
1:A:266:ARG:HB3	1:A:299:VAL:HG13	2.02	0.41
1:D:104:LYS:O	1:D:108:GLU:HG2	2.20	0.41
1:C:292:SER:N	1:C:295:PHE:CD2	2.88	0.41
1:A:260:GLU:OE2	1:A:332:PRO:HD2	2.21	0.41
1:D:240:LYS:HB3	1:D:240:LYS:HE2	1.84	0.41
1:B:128:VAL:O	1:B:132:LEU:HB2	2.21	0.41
1:A:260:GLU:OE1	1:A:334:VAL:HG23	2.21	0.41
1:B:153:ALA:HA	1:B:154:PRO:HD3	1.92	0.41
1:C:218:PHE:CZ	1:C:255:VAL:HG13	2.56	0.41
1:A:109:GLN:HG3	1:A:110:PRO:HD2	2.03	0.40
1:A:179:TRP:CD1	1:A:179:TRP:N	2.88	0.40
1:A:159:VAL:HA	1:A:177:SER:OG	2.21	0.40
1:A:148:LEU:H	1:A:148:LEU:HD12	1.86	0.40
1:B:297:TYR:CD1	1:B:298:PRO:HD2	2.56	0.40
1:B:101:ARG:NH1	1:B:150:GLU:OE1	2.55	0.40
1:C:186:LEU:HD21	1:C:213:ASN:HD21	1.86	0.40
1:D:189:VAL:HB	1:D:202:TRP:HB2	2.04	0.40
1:B:326:ASN:C	1:B:326:ASN:ND2	2.74	0.40
1:B:248:TYR:O	1:B:252:VAL:HG23	2.22	0.40
1:C:189:VAL:HB	1:C:202:TRP:HB2	2.04	0.40
1:A:303:GLY:O	1:A:304:ASP:C	2.60	0.40

There are no symmetry-related clashes.

## 5.3 Torsion angles

### 5.3.1 Protein backbone ⓘ

In the following table, the Percentiles column shows the percent Ramachandran outliers of the chain as a percentile score with respect to all X-ray entries followed by that with respect to entries of similar resolution. The Analysed column shows the number of residues for which the backbone conformation was analysed, and the total number of residues.

Mol	Chain	Analysed	Favoured	Allowed	Outliers	Percentiles	
1	A	224/260 (86%)	210 (94%)	13 (6%)	1 (0%)	43	66
1	B	227/260 (87%)	215 (95%)	12 (5%)	0	100	100
1	C	235/260 (90%)	226 (96%)	9 (4%)	0	100	100
1	D	232/260 (89%)	220 (95%)	10 (4%)	2 (1%)	25	42
All	All	918/1040 (88%)	871 (95%)	44 (5%)	3 (0%)	50	73

All (3) Ramachandran outliers are listed below:

Mol	Chain	Res	Type
1	A	271	VAL
1	D	273	GLU
1	D	180	GLU

### 5.3.2 Protein sidechains ⓘ

In the following table, the Percentiles column shows the percent sidechain outliers of the chain as a percentile score with respect to all X-ray entries followed by that with respect to entries of similar resolution. The Analysed column shows the number of residues for which the sidechain conformation was analysed, and the total number of residues.

Mol	Chain	Analysed	Rotameric	Outliers	Percentiles	
1	A	197/223 (88%)	188 (95%)	9 (5%)	37	62
1	B	199/223 (89%)	190 (96%)	9 (4%)	38	63
1	C	207/223 (93%)	194 (94%)	13 (6%)	25	44
1	D	204/223 (92%)	197 (97%)	7 (3%)	49	75
All	All	807/892 (90%)	769 (95%)	38 (5%)	36	61

All (38) residues with a non-rotameric sidechain are listed below:

Mol	Chain	Res	Type
1	A	132	LEU
1	A	151	HIS
1	A	160	ASN
1	A	200	LEU
1	A	219	GLN
1	A	229	GLN
1	A	253	ARG
1	A	295	PHE
1	A	351	LEU
1	B	132	LEU
1	B	151	HIS
1	B	155	GLU
1	B	166	PRO
1	B	200	LEU
1	B	219	GLN
1	B	254	ARG
1	B	306	LEU
1	B	326	ASN
1	C	111	LEU
1	C	132	LEU
1	C	151	HIS
1	C	157	VAL
1	C	198	ASN
1	C	200	LEU
1	C	202	TRP
1	C	219	GLN
1	C	272	MET
1	C	293	ARG
1	C	295	PHE
1	C	304	ASP
1	C	326	ASN
1	D	112	GLU
1	D	116	LEU
1	D	179	TRP
1	D	219	GLN
1	D	326	ASN
1	D	339	LYS
1	D	351	LEU

Some sidechains can be flipped to improve hydrogen bonding and reduce clashes. All (56) such sidechains are listed below:

Mol	Chain	Res	Type
1	A	107	GLN

*Continued on next page...*



*Continued from previous page...*

Mol	Chain	Res	Type
1	A	109	GLN
1	A	147	ASN
1	A	160	ASN
1	A	162	ASN
1	A	175	ASN
1	A	198	ASN
1	A	209	GLN
1	A	213	ASN
1	A	219	GLN
1	A	229	GLN
1	A	237	HIS
1	A	317	ASN
1	A	318	ASN
1	B	140	ASN
1	B	151	HIS
1	B	162	ASN
1	B	187	HIS
1	B	209	GLN
1	B	211	GLN
1	B	213	ASN
1	B	219	GLN
1	B	229	GLN
1	B	237	HIS
1	B	239	GLN
1	B	318	ASN
1	B	326	ASN
1	C	107	GLN
1	C	109	GLN
1	C	119	HIS
1	C	151	HIS
1	C	162	ASN
1	C	187	HIS
1	C	198	ASN
1	C	209	GLN
1	C	213	ASN
1	C	219	GLN
1	C	229	GLN
1	C	237	HIS
1	C	239	GLN
1	C	291	GLN
1	C	317	ASN
1	C	318	ASN

*Continued on next page...*

*Continued from previous page...*

Mol	Chain	Res	Type
1	C	326	ASN
1	D	109	GLN
1	D	147	ASN
1	D	162	ASN
1	D	198	ASN
1	D	209	GLN
1	D	213	ASN
1	D	219	GLN
1	D	229	GLN
1	D	237	HIS
1	D	317	ASN
1	D	318	ASN
1	D	326	ASN

### 5.3.3 RNA ⓘ

There are no RNA chains in this entry.

## 5.4 Non-standard residues in protein, DNA, RNA chains ⓘ

There are no non-standard protein/DNA/RNA residues in this entry.

## 5.5 Carbohydrates ⓘ

There are no carbohydrates in this entry.

## 5.6 Ligand geometry ⓘ

4 ligands are modelled in this entry.

In the following table, the Counts columns list the number of bonds (or angles) for which Mogul statistics could be retrieved, the number of bonds (or angles) that are observed in the model and the number of bonds (or angles) that are defined in the chemical component dictionary. The Link column lists molecule types, if any, to which the group is linked. The Z score for a bond length (or angle) is the number of standard deviations the observed value is removed from the expected value. A bond length (or angle) with  $|Z| > 2$  is considered an outlier worth inspection. RMSZ is the root-mean-square of all Z scores of the bond lengths (or angles).

Mol	Type	Chain	Res	Link	Bond lengths			Bond angles		
					Counts	RMSZ	$\# Z  > 2$	Counts	RMSZ	$\# Z  > 2$
2	GTB	A	355	-	30,30,30	1.75	4 (13%)	39,39,39	1.42	3 (7%)

Mol	Type	Chain	Res	Link	Bond lengths			Bond angles		
					Counts	RMSZ	# Z  > 2	Counts	RMSZ	# Z  > 2
2	GTB	B	356	-	30,30,30	1.88	4 (13%)	39,39,39	1.33	3 (7%)
2	GTB	C	357	-	30,30,30	1.86	4 (13%)	39,39,39	1.26	3 (7%)
3	GSH	D	358	-	19,19,19	0.96	0	24,24,24	1.37	2 (8%)

In the following table, the Chirals column lists the number of chiral outliers, the number of chiral centers analysed, the number of these observed in the model and the number defined in the chemical component dictionary. Similar counts are reported in the Torsion and Rings columns. '-' means no outliers of that kind were identified.

Mol	Type	Chain	Res	Link	Chirals	Torsions	Rings
2	GTB	A	355	-	-	0/32/32/32	0/1/1/1
2	GTB	B	356	-	-	0/32/32/32	0/1/1/1
2	GTB	C	357	-	-	0/32/32/32	0/1/1/1
3	GSH	D	358	-	-	0/24/24/24	0/0/0/0

All (12) bond length outliers are listed below:

Mol	Chain	Res	Type	Atoms	Z	Observed(Å)	Ideal(Å)
2	C	357	GTB	C6'-C1'	6.71	1.54	1.38
2	B	356	GTB	C6'-C1'	6.68	1.54	1.38
2	A	355	GTB	C6'-C1'	6.54	1.53	1.38
2	B	356	GTB	C4'-N41	4.86	1.54	1.46
2	C	357	GTB	C4'-N41	4.63	1.53	1.46
2	A	355	GTB	C4'-N41	4.22	1.53	1.46
2	B	356	GTB	C3'-C4'	2.92	1.44	1.38
2	C	357	GTB	C3'-C4'	2.91	1.44	1.38
2	A	355	GTB	C3'-C4'	2.63	1.44	1.38
2	B	356	GTB	C5'-C4'	2.56	1.44	1.38
2	C	357	GTB	C5'-C4'	2.52	1.43	1.38
2	A	355	GTB	C5'-C4'	2.52	1.43	1.38

All (11) bond angle outliers are listed below:

Mol	Chain	Res	Type	Atoms	Z	Observed(°)	Ideal(°)
3	D	358	GSH	C1-CA1-N1	-5.18	100.79	109.36
2	A	355	GTB	C1-CA1-N1	-5.10	100.93	109.36
2	B	356	GTB	C1-CA1-N1	-4.81	101.39	109.36
2	C	357	GTB	C1-CA1-N1	-4.08	102.61	109.36
2	C	357	GTB	O41-N41-C4'	3.77	121.66	114.42
2	B	356	GTB	O41-N41-C4'	3.70	121.54	114.42
2	A	355	GTB	O41-N41-C4'	3.62	121.37	114.42

*Continued on next page...*

*Continued from previous page...*

Mol	Chain	Res	Type	Atoms	Z	Observed(°)	Ideal(°)
2	A	355	GTB	CB2-SG2-C'	-3.08	95.57	101.65
2	C	357	GTB	CB2-SG2-C'	-2.62	96.49	101.65
2	B	356	GTB	CB2-SG2-C'	-2.56	96.61	101.65
3	D	358	GSH	CG1-CB1-CA1	-2.02	110.66	114.43

There are no chirality outliers.

There are no torsion outliers.

There are no ring outliers.

## 5.7 Other polymers ⓘ

There are no such residues in this entry.

## 5.8 Polymer linkage issues

There are no chain breaks in this entry.

## 6 Fit of model and data ⓘ

### 6.1 Protein, DNA and RNA chains ⓘ

In the following table, the column labelled ‘#RSRZ> 2’ contains the number (and percentage) of RSRZ outliers, followed by percent RSRZ outliers for the chain as percentile scores relative to all X-ray entries and entries of similar resolution. The OWAB column contains the minimum, median, 95<sup>th</sup> percentile and maximum values of the occupancy-weighted average B-factor per residue. The column labelled ‘Q< 0.9’ lists the number of (and percentage) of residues with an average occupancy less than 0.9.

Mol	Chain	Analysed	<RSRZ>	#RSRZ>2	OWAB(Å <sup>2</sup> )	Q<0.9
1	A	228/260 (87%)	-0.04	6 (2%) 53 55	17, 32, 67, 72	0
1	B	231/260 (88%)	-0.00	10 (4%) 34 35	16, 34, 70, 80	0
1	C	239/260 (91%)	-0.12	8 (3%) 44 45	15, 29, 65, 80	0
1	D	236/260 (90%)	-0.02	6 (2%) 54 57	16, 31, 69, 77	0
All	All	934/1040 (89%)	-0.04	30 (3%) 44 47	15, 32, 68, 80	0

All (30) RSRZ outliers are listed below:

Mol	Chain	Res	Type	RSRZ
1	D	294	PHE	6.0
1	B	104	LYS	4.2
1	D	295	PHE	4.1
1	C	272	MET	4.1
1	B	100	SER	3.9
1	D	297	TYR	3.7
1	C	295	PHE	3.4
1	D	107	GLN	3.3
1	C	293	ARG	3.3
1	A	297	TYR	3.2
1	D	104	LYS	3.1
1	A	295	PHE	2.8
1	B	297	TYR	2.8
1	C	100	SER	2.8
1	C	274	LEU	2.8
1	B	107	GLN	2.6
1	B	168	LEU	2.6
1	A	107	GLN	2.6
1	B	108	GLU	2.6
1	C	294	PHE	2.5
1	B	111	LEU	2.4

*Continued on next page...*

*Continued from previous page...*

Mol	Chain	Res	Type	RSRZ
1	C	291	GLN	2.4
1	D	154	PRO	2.3
1	A	104	LYS	2.3
1	B	152	ARG	2.3
1	B	103	THR	2.3
1	C	292	SER	2.1
1	A	108	GLU	2.1
1	B	296	ASP	2.1
1	A	106	PHE	2.0

## 6.2 Non-standard residues in protein, DNA, RNA chains ⓘ

There are no non-standard protein/DNA/RNA residues in this entry.

## 6.3 Carbohydrates ⓘ

There are no carbohydrates in this entry.

## 6.4 Ligands ⓘ

In the following table, the Atoms column lists the number of modelled atoms in the group and the number defined in the chemical component dictionary. LLDF column lists the quality of electron density of the group with respect to its neighbouring residues in protein, DNA or RNA chains. The B-factors column lists the minimum, median, 95<sup>th</sup> percentile and maximum values of B factors of atoms in the group. The column labelled 'Q < 0.9' lists the number of atoms with occupancy less than 0.9.

Mol	Type	Chain	Res	Atoms	RSR	LLDF	B-factors(Å <sup>2</sup> )	Q<0.9
2	GTB	B	356	30/30	0.26	3.40	51,69,80,80	0
2	GTB	A	355	30/30	0.20	1.50	29,55,73,75	0
3	GSH	D	358	20/20	0.20	1.43	33,57,68,68	0
2	GTB	C	357	30/30	0.18	1.01	23,37,62,64	0

## 6.5 Other polymers ⓘ

There are no such residues in this entry.