



Full wwPDB X-ray Structure Validation Report ⓘ

Feb 27, 2014 – 07:41 AM GMT

PDB ID : 1K0Y
Title : X-ray Crystallographic Analyses of Symmetrical Allosteric Effectors of Hemoglobin. Compounds Designed to Link Primary and Secondary Binding Sites
Authors : Safo, M.K.; Boyiri, T.; Burnett, J.C.; Danso-Danquah, R.; Moure, C.M.; Joshi, G.S.; Abraham, D.J.
Deposited on : 2001-09-21
Resolution : 1.87 Å(reported)

This is a full wwPDB validation report for a publicly released PDB entry.
We welcome your comments at validation@mail.wwpdb.org
A user guide is available at <http://wwpdb.org/ValidationPDFNotes.html>

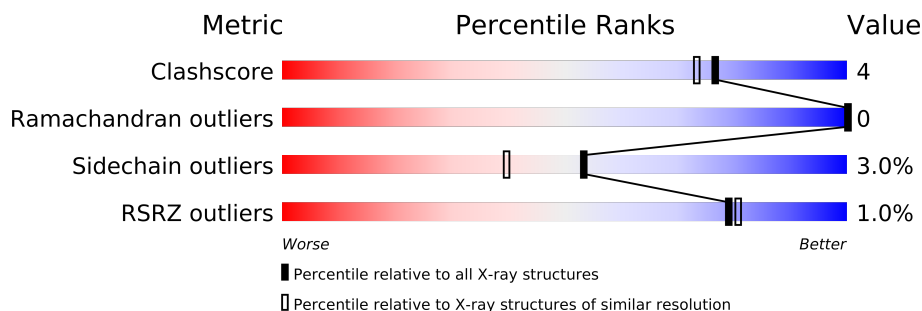
The following versions of software and data (see [references](#)) were used in the production of this report:

MolProbity : 4.02b-467
Mogul : 1.15 2013
Xtriage (Phenix) : dev-1323
EDS : stable22639
Percentile statistics : 21963
Refmac : 5.8.0049
CCP4 : 6.3.0 (Settle)
Ideal geometry (proteins) : Engh & Huber (2001)
Ideal geometry (DNA, RNA) : Parkinson et. al. (1996)
Validation Pipeline (wwPDB-VP) : stable22683

1 Overall quality at a glance

The reported resolution of this entry is 1.87 Å.

Percentile scores (ranging between 0-100) for global validation metrics of the entry are shown in the following graphic. The table shows the number of entries on which the scores are based.



Metric	Whole archive (#Entries)	Similar resolution (#Entries, resolution range(Å))
Clashscore	79885	6268 (1.90-1.86)
Ramachandran outliers	78287	6195 (1.90-1.86)
Sidechain outliers	78261	6196 (1.90-1.86)
RSRZ outliers	66119	5262 (1.90-1.86)

The table below summarises the geometric issues observed across the polymeric chains and their fit to the electron density. The red, orange, yellow and green segments on the lower bar indicate the fraction of residues that contain outliers for ≥ 3 , 2, 1 and 0 types of geometric quality criteria. The upper red bar (where present) indicates the fraction of residues that have poor fit to the electron density.

Mol	Chain	Length	Quality of chain
1	A	141	
1	C	141	
2	B	146	
2	D	146	

The following table lists non-polymeric compounds that are outliers for geometric or electron-density-fit criteria:

Mol	Type	Chain	Res	Geometry	Electron density
3	SO4	B	1400	-	X
3	SO4	D	1300	-	X
5	CNO	D	801	-	X
5	CNO	D	802	-	X

2 Entry composition i

There are 6 unique types of molecules in this entry. The entry contains 4903 atoms, of which 0 are hydrogen and 0 are deuterium.

In the tables below, the ZeroOcc column contains the number of atoms modelled with zero occupancy, the AltConf column contains the number of residues with at least one atom in alternate conformation and the Trace column contains the number of residues modelled with at most 2 atoms.

- Molecule 1 is a protein called hemoglobin alpha chain.

Mol	Chain	Residues	Atoms					ZeroOcc	AltConf	Trace
1	A	141	Total	C	N	O	S	0	0	0
			1069	685	187	194	3			
1	C	141	Total	C	N	O	S	0	0	0
			1069	685	187	194	3			

- Molecule 2 is a protein called hemoglobin beta chain.

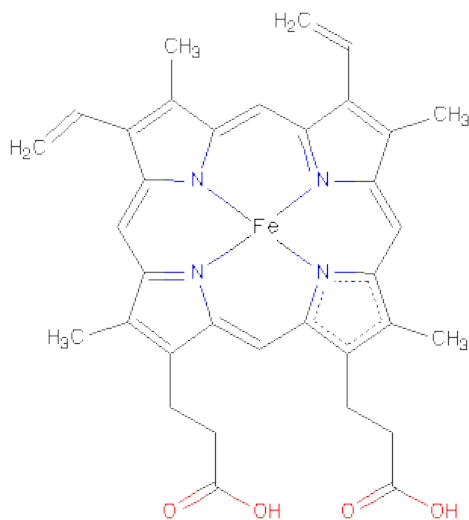
Mol	Chain	Residues	Atoms					ZeroOcc	AltConf	Trace
2	B	146	Total	C	N	O	S	0	0	0
			1123	724	195	201	3			
2	D	146	Total	C	N	O	S	0	0	0
			1123	724	195	201	3			

- Molecule 3 is SULFATE ION (three-letter code: SO₄) (formula: O₄S).



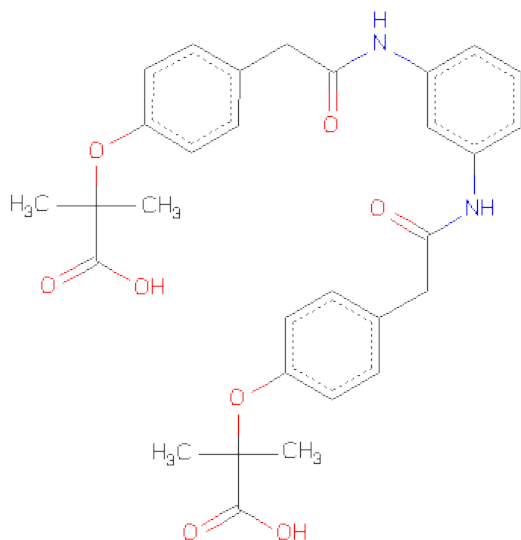
Mol	Chain	Residues	Atoms			ZeroOcc	AltConf
3	D	1	Total	O	S	0	0
			5	4	1		
3	B	1	Total	O	S	0	0
			5	4	1		

- Molecule 4 is PROTOPORPHYRIN IX CONTAINING FE (three-letter code: HEM) (formula: $C_{34}H_{32}FeN_4O_4$).



Mol	Chain	Residues	Atoms					ZeroOcc	AltConf
4	A	1	Total	C	Fe	N	O	0	0
			43	34	1	4	4		
4	B	1	Total	C	Fe	N	O	0	0
			43	34	1	4	4		
4	C	1	Total	C	Fe	N	O	0	0
			43	34	1	4	4		
4	D	1	Total	C	Fe	N	O	0	0
			43	34	1	4	4		

- Molecule 5 is 2-{4-[(3{2-[4-(1-CARBOXY-1-METHYL-ETHOXY)-PHENYL]-ACETYLAMINO}-PHENYL-CARBAMOYL)-METHYL]-PHENOXY}-2-METHYL-PROPIONIC ACID (three-letter code: CNO) (formula: $C_{30}H_{32}N_2O_8$).



Mol	Chain	Residues	Atoms				ZeroOcc	AltConf
5	D	1	Total	C	N	O	0	0
			40	30	2	8		
5	D	1	Total	C	N	O	0	0
			40	30	2	8		

- Molecule 6 is water.

Mol	Chain	Residues	Atoms		ZeroOcc	AltConf
6	A	70	Total	O	0	0
			70	70		
6	B	56	Total	O	0	0
			56	56		
6	C	71	Total	O	0	0
			71	71		
6	D	60	Total	O	0	0
			60	60		

3 Residue-property plots

These plots are drawn for all protein, RNA and DNA chains in the entry. The first graphic for a chain summarises the proportions of errors displayed in the second graphic. The second graphic shows the sequence view annotated by issues in geometry and electron density. Residues are color-coded according to the number of geometric quality criteria for which they contain at least one outlier: green = 0, yellow = 1, orange = 2 and red = 3 or more. A red dot above a residue indicates a poor fit to the electron density ($RSRZ > 2$). Stretches of 2 or more consecutive residues without any outlier are shown as a green connector. Residues present in the sample, but not in the model, are shown in grey.

- Molecule 1: hemoglobin alpha chain

Chain A: 



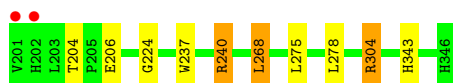
- Molecule 1: hemoglobin alpha chain

Chain C: 



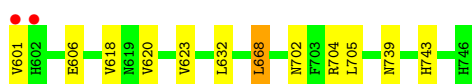
- Molecule 2: hemoglobin beta chain

Chain B: 



- Molecule 2: hemoglobin beta chain

Chain D: 



4 Data and refinement statistics

Property	Value	Source
Space group	P 1 21 1	Depositor
Cell constants a, b, c, α , β , γ	63.28Å 83.79Å 53.80Å 90.00° 99.33° 90.00°	Depositor
Resolution (Å)	53.00 – 1.87 53.09 – 1.87	Depositor EDS
% Data completeness (in resolution range)	100.0 (53.00-1.87) 92.9 (53.09-1.87)	Depositor EDS
R_{merge}	0.05	Depositor
R_{sym}	(Not available)	Depositor
$\langle I/\sigma(I) \rangle$ ¹	3.16 (at 1.87Å)	Xtriage
Refinement program	X-PLOR 3.843	Depositor
R, R_{free}	0.163 , 0.189 0.164 , (Not available)	Depositor DCC
R_{free} test set	No test flags present.	DCC
Wilson B-factor (Å ²)	21.8	Xtriage
Anisotropy	0.115	Xtriage
Bulk solvent k_{sol} (e/Å ³), B_{sol} (Å ²)	0.36 , 38.6	EDS
Estimated twinning fraction	No twinning to report.	Xtriage
L-test for twinning	$\langle L \rangle = 0.50$, $\langle L^2 \rangle = 0.33$	Xtriage
Outliers	0 of 80799 reflections	Xtriage
F_o, F_c correlation	0.97	EDS
Total number of atoms	4903	wwPDB-VP
Average B, all atoms (Å ²)	22.0	wwPDB-VP

Xtriage's analysis on translational NCS is as follows: *The largest off-origin peak in the Patterson function is 5.74% of the height of the origin peak. No significant pseudotranslation is detected.*

¹Intensities estimated from amplitudes.

5 Model quality

5.1 Standard geometry

Bond lengths and bond angles in the following residue types are not validated in this section: HEM, SO4, CNO

The Z score for a bond length (or angle) is the number of standard deviations the observed value is removed from the expected value. A bond length (or angle) with $|Z| > 5$ is considered an outlier worth inspection. RMSZ is the root-mean-square of all Z scores of the bond lengths (or angles).

Mol	Chain	Bond lengths		Bond angles	
		RMSZ	$\# Z > 5$	RMSZ	$\# Z > 5$
1	A	0.80	0/1097	0.61	1/1491 (0.1%)
1	C	0.85	0/1097	0.66	1/1491 (0.1%)
2	B	0.85	2/1153 (0.2%)	0.63	0/1566
2	D	0.85	1/1153 (0.1%)	0.62	0/1566
All	All	0.84	3/4500 (0.1%)	0.63	2/6114 (0.0%)

All (3) bond length outliers are listed below:

Mol	Chain	Res	Type	Atoms	Z	Observed(Å)	Ideal(Å)
2	B	240	ARG	NE-CZ	8.35	1.44	1.33
2	B	304	ARG	NE-CZ	6.38	1.41	1.33
2	D	704	ARG	NE-CZ	5.26	1.39	1.33

All (2) bond angle outliers are listed below:

Mol	Chain	Res	Type	Atoms	Z	Observed(°)	Ideal(°)
1	A	47	ASP	N-CA-C	-5.43	96.34	111.00
1	C	447	ASP	N-CA-C	-5.38	96.48	111.00

There are no chirality outliers.

There are no planarity outliers.

5.2 Close contacts

In the following table, the Non-H and H(model) columns list the number of non-hydrogen atoms and hydrogen atoms in the chain respectively. The H(added) column lists the number of hydrogens added by MolProbity. The Clashes column lists the number of clashes within the asymmetric unit, and the number in parentheses is this value normalized per 1000 atoms of the molecule in the chain. The Symm-Clashes column gives symmetry related clashes, in the same way as for the Clashes column.

Mol	Chain	Non-H	H(model)	H(added)	Clashes	Symm-Clashes
1	A	1069	0	1073	5	0
1	C	1069	0	1070	1	0
2	B	1123	0	1115	9	0
2	D	1123	0	1115	8	0
3	B	5	0	0	0	0
3	D	5	0	0	0	0
4	A	43	0	30	0	0
4	B	43	0	30	0	0
4	C	43	0	30	0	0
4	D	43	0	30	1	0
5	D	80	0	60	13	0
6	A	70	0	0	4	0
6	B	56	0	0	1	0
6	C	71	0	0	3	0
6	D	60	0	0	5	0
All	All	4903	0	4553	35	0

Clashscore is defined as the number of clashes calculated for the entry per 1000 atoms (including hydrogens) of the entry. The overall clashscore for this entry is 4.

All (35) close contacts within the same asymmetric unit are listed below.

Atom-1	Atom-2	Distance(Å)	Clash(Å)
5:D:801:CNO:H362	5:D:801:CNO:H30C	1.57	0.85
5:D:802:CNO:H362	5:D:802:CNO:H32C	1.59	0.83
5:D:801:CNO:C36	5:D:801:CNO:H30C	2.11	0.81
2:D:739:ASN:HB3	6:D:1070:HOH:O	1.88	0.74
5:D:802:CNO:C36	5:D:802:CNO:H32C	2.20	0.70
2:D:705:LEU:HA	6:D:1072:HOH:O	1.94	0.67
5:D:802:CNO:H362	5:D:802:CNO:C32	2.29	0.61
2:D:705:LEU:HD23	6:D:1072:HOH:O	1.99	0.61
1:A:21:ALA:HB1	1:A:63:ALA:HB1	1.85	0.58
5:D:801:CNO:O16	5:D:801:CNO:H19C	2.04	0.57
2:B:304:ARG:HB2	2:B:304:ARG:NH1	2.20	0.57
5:D:801:CNO:O26	5:D:801:CNO:H22C	2.05	0.55
1:C:401:VAL:N	6:C:1058:HOH:O	2.39	0.55
1:A:1:VAL:N	6:A:906:HOH:O	2.40	0.54
2:D:702:ASN:HB3	4:D:748:HEM:HMC1	1.90	0.54
1:A:58:HIS:HD2	6:A:933:HOH:O	1.89	0.54
5:D:801:CNO:H362	5:D:801:CNO:C30	2.34	0.53
2:B:304:ARG:HH21	5:D:802:CNO:H30C	1.74	0.52
2:D:620:VAL:HG13	2:D:668:LEU:HB3	1.92	0.52
2:B:224:GLY:HA2	2:B:268:LEU:HG	1.92	0.51
2:B:343:HIS:HB2	6:B:1086:HOH:O	2.11	0.50

Continued on next page...

Continued from previous page...

Atom-1	Atom-2	Distance(Å)	Clash(Å)
5:D:802:CNO:C32	5:D:802:CNO:C36	2.90	0.50
5:D:802:CNO:H11C	5:D:802:CNO:C1	2.42	0.49
2:D:618:VAL:HG13	2:D:623:VAL:HG21	1.97	0.47
5:D:802:CNO:H22C	5:D:802:CNO:O26	2.15	0.46
2:D:601:VAL:HG12	6:D:1068:HOH:O	2.14	0.46
2:B:237:TRP:HD1	2:B:240:ARG:HH11	1.63	0.46
2:B:240:ARG:HD2	6:C:1149:HOH:O	2.16	0.45
2:D:743:HIS:HB3	6:D:940:HOH:O	2.18	0.44
2:B:240:ARG:CD	6:C:1149:HOH:O	2.67	0.42
1:A:4:PRO:HD2	6:A:1006:HOH:O	2.19	0.42
2:B:204:THR:OG1	2:B:206:GLU:HG2	2.19	0.42
5:D:801:CNO:H11C	5:D:801:CNO:C1	2.49	0.42
1:A:58:HIS:HE1	6:A:935:HOH:O	2.01	0.42
2:B:304:ARG:HB2	2:B:304:ARG:HH11	1.84	0.41

There are no symmetry-related clashes.

5.3 Torsion angles

5.3.1 Protein backbone ⓘ

In the following table, the Percentiles column shows the percent Ramachandran outliers of the chain as a percentile score with respect to all X-ray entries followed by that with respect to entries of similar resolution. The Analysed column shows the number of residues for which the backbone conformation was analysed, and the total number of residues.

Mol	Chain	Analysed	Favoured	Allowed	Outliers	Percentiles	
1	A	139/141 (99%)	137 (99%)	2 (1%)	0	100	100
1	C	139/141 (99%)	136 (98%)	3 (2%)	0	100	100
2	B	144/146 (99%)	142 (99%)	2 (1%)	0	100	100
2	D	144/146 (99%)	142 (99%)	2 (1%)	0	100	100
All	All	566/574 (99%)	557 (98%)	9 (2%)	0	100	100

There are no Ramachandran outliers to report.

5.3.2 Protein sidechains ⓘ

In the following table, the Percentiles column shows the percent sidechain outliers of the chain as a percentile score with respect to all X-ray entries followed by that with respect to entries of

similar resolution. The Analysed column shows the number of residues for which the sidechain conformation was analysed, and the total number of residues.

Mol	Chain	Analysed	Rotameric	Outliers	Percentiles	
1	A	113/113 (100%)	110 (97%)	3 (3%)	57	45
1	C	113/113 (100%)	108 (96%)	5 (4%)	39	23
2	B	118/118 (100%)	115 (98%)	3 (2%)	60	48
2	D	118/118 (100%)	115 (98%)	3 (2%)	60	48
All	All	462/462 (100%)	448 (97%)	14 (3%)	53	40

All (14) residues with a non-rotameric sidechain are listed below:

Mol	Chain	Res	Type
1	A	66	LEU
1	A	78	ASN
1	A	105	LEU
2	B	268	LEU
2	B	275	LEU
2	B	278	LEU
1	C	416	LYS
1	C	466	LEU
1	C	473	VAL
1	C	505	LEU
1	C	506	LEU
2	D	606	GLU
2	D	632	LEU
2	D	668	LEU

Some sidechains can be flipped to improve hydrogen bonding and reduce clashes. All (4) such sidechains are listed below:

Mol	Chain	Res	Type
1	A	58	HIS
2	B	339	ASN
1	C	450	HIS
2	D	663	HIS

5.3.3 RNA ⓘ

There are no RNA chains in this entry.

5.4 Non-standard residues in protein, DNA, RNA chains ⓘ

There are no non-standard protein/DNA/RNA residues in this entry.

5.5 Carbohydrates ⓘ

There are no carbohydrates in this entry.

5.6 Ligand geometry ⓘ

8 ligands are modelled in this entry.

In the following table, the Counts columns list the number of bonds (or angles) for which Mogul statistics could be retrieved, the number of bonds (or angles) that are observed in the model and the number of bonds (or angles) that are defined in the chemical component dictionary. The Link column lists molecule types, if any, to which the group is linked. The Z score for a bond length (or angle) is the number of standard deviations the observed value is removed from the expected value. A bond length (or angle) with $|Z| > 2$ is considered an outlier worth inspection. RMSZ is the root-mean-square of all Z scores of the bond lengths (or angles).

Mol	Type	Chain	Res	Link	Bond lengths			Bond angles		
					Counts	RMSZ	# $ Z > 2$	Counts	RMSZ	# $ Z > 2$
4	HEM	A	143	1	49,50,50	2.68	20 (40%)	46,82,82	1.38	5 (10%)
3	SO4	B	1400	-	4,4,4	0.99	0	6,6,6	0.23	0
4	HEM	B	348	2	49,50,50	3.15	22 (44%)	46,82,82	1.31	5 (10%)
4	HEM	C	543	1	49,50,50	2.59	15 (30%)	46,82,82	1.39	6 (13%)
3	SO4	D	1300	-	4,4,4	0.90	0	6,6,6	0.39	0
4	HEM	D	748	2	49,50,50	2.84	15 (30%)	46,82,82	1.46	6 (13%)
5	CNO	D	801	-	42,42,42	1.71	8 (19%)	60,60,60	1.06	5 (8%)
5	CNO	D	802	-	42,42,42	1.27	5 (11%)	60,60,60	0.95	2 (3%)

In the following table, the Chirals column lists the number of chiral outliers, the number of chiral centers analysed, the number of these observed in the model and the number defined in the chemical component dictionary. Similar counts are reported in the Torsion and Rings columns. '-' means no outliers of that kind were identified.

Mol	Type	Chain	Res	Link	Chirals	Torsions	Rings
4	HEM	A	143	1	-	0/14/114/114	0/0/8/8
3	SO4	B	1400	-	-	0/0/0/0	0/0/0/0
4	HEM	B	348	2	-	0/14/114/114	0/0/8/8
4	HEM	C	543	1	-	0/14/114/114	0/0/8/8
3	SO4	D	1300	-	-	0/0/0/0	0/0/0/0
4	HEM	D	748	2	-	0/14/114/114	0/0/8/8

Continued on next page...

Continued from previous page...

Mol	Type	Chain	Res	Link	Chirals	Torsions	Rings
5	CNO	D	801	-	-	0/38/38/38	0/3/3/3
5	CNO	D	802	-	-	0/38/38/38	0/3/3/3

All (85) bond length outliers are listed below:

Mol	Chain	Res	Type	Atoms	Z	Observed(Å)	Ideal(Å)
4	B	348	HEM	C2B-C1B	15.35	1.48	1.44
4	D	748	HEM	C3D-C4D	11.61	1.47	1.44
4	C	543	HEM	C2D-C1D	10.84	1.47	1.44
4	D	748	HEM	C2D-C1D	8.06	1.46	1.44
4	A	143	HEM	C2B-C1B	8.01	1.46	1.44
4	B	348	HEM	CHA-C4D	6.34	1.44	1.35
4	C	543	HEM	C3D-C4D	5.26	1.45	1.44
4	C	543	HEM	C3D-C2D	-5.24	1.34	1.43
4	A	143	HEM	C2D-C1D	4.94	1.45	1.44
4	A	143	HEM	FE-NC	4.89	2.16	1.97
4	D	748	HEM	C4A-C3A	4.88	1.46	1.40
4	A	143	HEM	CHC-C1C	4.81	1.45	1.36
4	A	143	HEM	C3D-C4D	4.57	1.45	1.44
4	A	143	HEM	C4A-C3A	4.55	1.45	1.40
5	D	801	CNO	O34-C33	4.45	1.55	1.40
4	B	348	HEM	C3D-C2D	-4.36	1.36	1.43
5	D	801	CNO	C30-C29	-4.36	1.30	1.38
4	D	748	HEM	C3D-C2D	-4.31	1.36	1.43
4	C	543	HEM	C2B-C1B	4.23	1.45	1.44
4	A	143	HEM	CHB-C1B	4.22	1.41	1.35
4	A	143	HEM	CHA-C4D	4.22	1.41	1.35
4	B	348	HEM	FE-NA	4.16	2.10	1.92
4	D	748	HEM	CHA-C4D	4.03	1.41	1.35
4	B	348	HEM	FE-ND	3.94	2.12	1.97
4	C	543	HEM	CHB-C1B	3.92	1.41	1.35
4	A	143	HEM	C3B-C4B	3.92	1.49	1.44
4	D	748	HEM	FE-NC	3.85	2.12	1.97
4	C	543	HEM	CBC-CAC	3.77	1.50	1.28
4	A	143	HEM	C3B-C2B	-3.75	1.37	1.43
4	D	748	HEM	C3B-C2B	-3.69	1.37	1.43
4	C	543	HEM	CHC-C1C	3.69	1.43	1.36
4	D	748	HEM	CHB-C1B	3.69	1.41	1.35
4	D	748	HEM	FE-NA	3.53	2.07	1.92
4	B	348	HEM	CBC-CAC	3.51	1.49	1.28
4	B	348	HEM	FE-NC	3.48	2.10	1.97
5	D	801	CNO	C14-C13	-3.46	1.45	1.51

Continued on next page...

Continued from previous page...

Mol	Chain	Res	Type	Atoms	Z	Observed(Å)	Ideal(Å)
4	C	543	HEM	C4A-C3A	3.43	1.44	1.40
5	D	801	CNO	C35-C38	-3.40	1.49	1.53
5	D	802	CNO	O34-C33	3.37	1.51	1.40
5	D	801	CNO	C32-C31	3.28	1.45	1.38
4	B	348	HEM	CBB-CAB	3.23	1.47	1.28
4	A	143	HEM	FE-NA	3.21	2.06	1.92
5	D	801	CNO	C4-C1	-3.14	1.49	1.53
4	A	143	HEM	C3D-C2D	-3.12	1.38	1.43
4	C	543	HEM	FE-NB	3.08	2.09	1.97
4	A	143	HEM	FE-NB	3.06	2.09	1.97
4	B	348	HEM	CMB-C2B	3.03	1.56	1.47
4	B	348	HEM	C3B-C2B	-3.00	1.38	1.43
4	A	143	HEM	CBB-CAB	2.99	1.46	1.28
4	A	143	HEM	C3C-C2C	-2.99	1.38	1.43
4	B	348	HEM	C3B-C4B	2.95	1.47	1.44
5	D	802	CNO	C4-C1	-2.91	1.50	1.53
4	A	143	HEM	CBC-CAC	2.88	1.45	1.28
4	B	348	HEM	C2D-C1D	2.87	1.45	1.44
4	D	748	HEM	CBC-CAC	2.85	1.45	1.28
5	D	802	CNO	C30-C29	2.79	1.44	1.38
4	B	348	HEM	CHB-C1B	2.76	1.39	1.35
4	C	543	HEM	FE-NA	2.73	2.04	1.92
4	B	348	HEM	CHC-C1C	2.73	1.41	1.36
4	B	348	HEM	CHD-C4C	2.69	1.41	1.36
4	B	348	HEM	C1C-NC	2.68	1.41	1.38
4	D	748	HEM	C3C-C2C	-2.63	1.39	1.43
4	B	348	HEM	C4C-NC	2.62	1.41	1.38
4	D	748	HEM	CHD-C4C	2.59	1.41	1.36
5	D	801	CNO	O7-C8	2.58	1.49	1.40
5	D	801	CNO	O34-C35	2.58	1.48	1.45
4	C	543	HEM	CBB-CAB	2.56	1.43	1.28
4	D	748	HEM	CBB-CAB	2.53	1.43	1.28
4	B	348	HEM	C3D-C4D	2.51	1.45	1.44
4	B	348	HEM	C1A-NA	2.49	1.41	1.36
4	B	348	HEM	FE-NB	2.42	2.06	1.97
4	C	543	HEM	CMB-C2B	2.42	1.54	1.47
4	C	543	HEM	FE-NC	2.40	2.06	1.97
4	D	748	HEM	C1A-C2A	2.40	1.47	1.43
5	D	802	CNO	O7-C8	2.37	1.48	1.40
4	A	143	HEM	C1A-C2A	2.38	1.47	1.43
4	C	543	HEM	CMC-C2C	2.37	1.54	1.47
4	B	348	HEM	C4A-C3A	2.26	1.43	1.40

Continued on next page...

Continued from previous page...

Mol	Chain	Res	Type	Atoms	Z	Observed(Å)	Ideal(Å)
4	A	143	HEM	C4A-NA	2.21	1.40	1.36
4	A	143	HEM	C1C-NC	2.18	1.41	1.38
4	C	543	HEM	C1C-NC	2.15	1.41	1.38
4	D	748	HEM	C4A-NA	2.05	1.40	1.36
5	D	802	CNO	C14-C13	-2.03	1.48	1.51
4	B	348	HEM	CHC-C4B	2.03	1.44	1.39
4	A	143	HEM	C4B-NB	2.00	1.42	1.37

All (29) bond angle outliers are listed below:

Mol	Chain	Res	Type	Atoms	Z	Observed(°)	Ideal(°)
4	A	143	HEM	C3B-C4B-NB	-5.30	110.20	114.00
4	B	348	HEM	C3B-C4B-NB	-4.96	110.45	114.00
4	D	748	HEM	C3B-C4B-NB	-4.78	110.58	114.00
4	C	543	HEM	C3B-C4B-NB	-3.43	111.54	114.00
4	B	348	HEM	CMA-C3A-C4A	-3.29	123.56	128.62
4	C	543	HEM	C4A-C3A-C2A	-3.11	104.83	107.00
4	B	348	HEM	CHC-C1C-NC	-3.08	122.06	124.73
4	C	543	HEM	C3A-C4A-NA	3.03	111.70	109.41
5	D	801	CNO	C29-C30-C33	3.01	123.78	119.76
4	D	748	HEM	CHD-C1D-ND	2.93	127.02	124.58
4	D	748	HEM	CAD-C3D-C4D	2.91	129.76	124.53
4	B	348	HEM	C2D-C1D-ND	-2.82	109.59	112.93
4	D	748	HEM	C3A-C4A-NA	2.79	111.52	109.41
4	A	143	HEM	C3A-C4A-NA	2.68	111.44	109.41
4	C	543	HEM	CHD-C4C-NC	-2.66	122.42	124.73
5	D	801	CNO	C35-O34-C33	2.59	125.75	121.15
4	C	543	HEM	CHC-C4B-NB	-2.41	122.58	124.58
4	A	143	HEM	C2D-C1D-ND	-2.32	110.19	112.93
5	D	801	CNO	C27-C28-C29	-2.20	117.56	120.88
5	D	801	CNO	C4-O7-C8	2.10	124.88	121.15
4	C	543	HEM	CAD-C3D-C2D	-2.10	122.57	127.25
4	D	748	HEM	C4A-C3A-C2A	-2.10	105.54	107.00
5	D	802	CNO	C4-O7-C8	2.08	124.84	121.15
5	D	802	CNO	O2-C1-C4	2.07	120.96	114.14
4	D	748	HEM	C2D-C1D-ND	-2.06	110.50	112.93
4	A	143	HEM	CHD-C4C-NC	-2.05	122.95	124.73
4	A	143	HEM	CBD-CAD-C3D	-2.05	109.91	114.37
5	D	801	CNO	C32-C31-C28	-2.03	118.05	121.05
4	B	348	HEM	CHD-C4C-NC	-2.02	122.98	124.73

There are no chirality outliers.

There are no torsion outliers.

There are no ring outliers.

5.7 Other polymers ⓘ

There are no such residues in this entry.

5.8 Polymer linkage issues

There are no chain breaks in this entry.

6 Fit of model and data ⓘ

6.1 Protein, DNA and RNA chains ⓘ

In the following table, the column labelled ‘#RSRZ> 2’ contains the number (and percentage) of RSRZ outliers, followed by percent RSRZ outliers for the chain as percentile scores relative to all X-ray entries and entries of similar resolution. The OWAB column contains the minimum, median, 95th percentile and maximum values of the occupancy-weighted average B-factor per residue. The column labelled ‘Q< 0.9’ lists the number of (and percentage) of residues with an average occupancy less than 0.9.

Mol	Chain	Analysed	<RSRZ>	#RSRZ>2	OWAB(Å ²)	Q<0.9
1	A	141/141 (100%)	-0.13	1 (0%) 84 86	11, 18, 31, 39	0
1	C	141/141 (100%)	-0.17	0 100 100	11, 17, 32, 41	0
2	B	146/146 (100%)	-0.03	2 (1%) 72 73	12, 19, 36, 58	0
2	D	146/146 (100%)	-0.03	2 (1%) 72 73	12, 20, 39, 51	0
All	All	574/574 (100%)	-0.09	5 (0%) 79 82	11, 18, 35, 58	0

All (5) RSRZ outliers are listed below:

Mol	Chain	Res	Type	RSRZ
2	B	202	HIS	5.0
2	B	201	VAL	3.4
2	D	602	HIS	2.3
1	A	1	VAL	2.2
2	D	601	VAL	2.0

6.2 Non-standard residues in protein, DNA, RNA chains ⓘ

There are no non-standard protein/DNA/RNA residues in this entry.

6.3 Carbohydrates ⓘ

There are no carbohydrates in this entry.

6.4 Ligands ⓘ

In the following table, the Atoms column lists the number of modelled atoms in the group and the number defined in the chemical component dictionary. LLDF column lists the quality of electron density of the group with respect to its neighbouring residues in protein, DNA or RNA chains.

The B-factors column lists the minimum, median, 95th percentile and maximum values of B factors of atoms in the group. The column labelled 'Q< 0.9' lists the number of atoms with occupancy less than 0.9.

Mol	Type	Chain	Res	Atoms	RSR	LLDF	B-factors(Å ²)	Q<0.9
5	CNO	D	802	40/40	0.44	10.66	26,37,50,54	40
5	CNO	D	801	40/40	0.36	8.26	26,35,45,46	40
3	SO4	B	1400	5/5	0.48	6.00	75,76,79,80	0
3	SO4	D	1300	5/5	0.28	3.38	65,65,69,69	0
4	HEM	D	748	43/43	0.11	0.58	14,17,39,44	0
4	HEM	B	348	43/43	0.10	0.02	12,14,23,32	0
4	HEM	A	143	43/43	0.09	-0.51	12,17,27,35	0
4	HEM	C	543	43/43	0.09	-0.64	12,15,29,36	0

6.5 Other polymers ⓘ

There are no such residues in this entry.