



# Full wwPDB X-ray Structure Validation Report ⓘ

Mar 1, 2014 – 04:37 AM GMT

PDB ID : 3K5F  
Title : Human BACE-1 COMPLEX WITH AYH011  
Authors : Rondeau, J.-M.  
Deposited on : 2009-10-07  
Resolution : 2.25 Å(reported)

This is a full wwPDB validation report for a publicly released PDB entry.  
We welcome your comments at [validation@mail.wwpdb.org](mailto:validation@mail.wwpdb.org)  
A user guide is available at <http://wwpdb.org/ValidationPDFNotes.html>

---

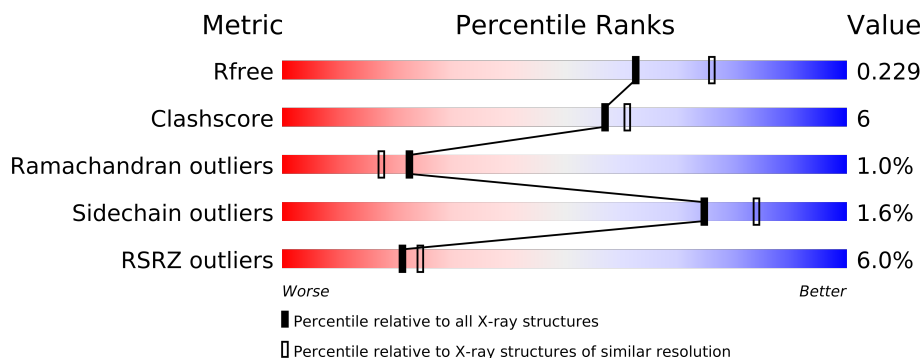
The following versions of software and data (see [references](#)) were used in the production of this report:

MolProbity : 4.02b-467  
Mogul : 1.15 2013  
Xtriage (Phenix) : dev-1323  
EDS : stable22639  
Percentile statistics : 21963  
Refmac : 5.8.0049  
CCP4 : 6.3.0 (Settle)  
Ideal geometry (proteins) : Engh & Huber (2001)  
Ideal geometry (DNA, RNA) : Parkinson et. al. (1996)  
Validation Pipeline (wwPDB-VP) : stable22683

# 1 Overall quality at a glance

The reported resolution of this entry is 2.25 Å.

Percentile scores (ranging between 0-100) for global validation metrics of the entry are shown in the following graphic. The table shows the number of entries on which the scores are based.



Metric	Whole archive (#Entries)	Similar resolution (#Entries, resolution range(Å))
$R_{free}$	66092	1108 (2.28-2.24)
Clashscore	79885	1326 (2.28-2.24)
Ramachandran outliers	78287	1291 (2.28-2.24)
Sidechain outliers	78261	1291 (2.28-2.24)
RSRZ outliers	66119	1110 (2.28-2.24)

The table below summarises the geometric issues observed across the polymeric chains and their fit to the electron density. The red, orange, yellow and green segments on the lower bar indicate the fraction of residues that contain outliers for  $\geq 3$ , 2, 1 and 0 types of geometric quality criteria. The upper red bar (where present) indicates the fraction of residues that have poor fit to the electron density.

Mol	Chain	Length	Quality of chain
1	A	402	
1	B	402	
1	C	402	

## 2 Entry composition

There are 3 unique types of molecules in this entry. The entry contains 9464 atoms, of which 0 are hydrogen and 0 are deuterium.

In the tables below, the ZeroOcc column contains the number of atoms modelled with zero occupancy, the AltConf column contains the number of residues with at least one atom in alternate conformation and the Trace column contains the number of residues modelled with at most 2 atoms.

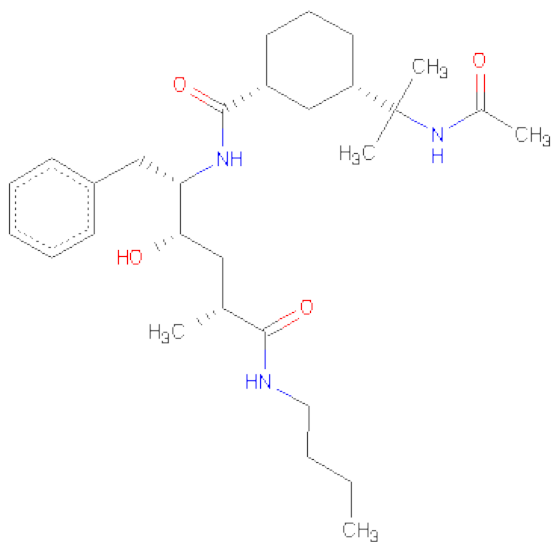
- Molecule 1 is a protein called Beta-secretase 1.

Mol	Chain	Residues	Atoms					ZeroOcc	AltConf	Trace
1	A	373	Total	C	N	O	S	0	0	0
			2928	1874	487	553	14			
1	B	377	Total	C	N	O	S	0	0	0
			2966	1898	493	561	14			
1	C	377	Total	C	N	O	S	0	0	0
			2966	1898	493	561	14			

There are 6 discrepancies between the modelled and reference sequences:

Chain	Residue	Modelled	Actual	Comment	Reference
A	33P	GLY	-	expression tag	UNP P56817
A	34P	PRO	-	expression tag	UNP P56817
B	33P	GLY	-	expression tag	UNP P56817
B	34P	PRO	-	expression tag	UNP P56817
C	33P	GLY	-	expression tag	UNP P56817
C	34P	PRO	-	expression tag	UNP P56817

- Molecule 2 is (1R,3S)-3-[1-(ACETYLAMINO)-1-METHYLETHYL]-N-[(1S,2S,4R)-1-BENZYL-5-(BUTYLAMINO)-2-HYDROXY-4-METHYL-5-OXOPENTYL]CYCLOHEXANECARBOXAMIDE (three-letter code: AYH) (formula: C<sub>29</sub>H<sub>47</sub>N<sub>3</sub>O<sub>4</sub>).



Mol	Chain	Residues	Atoms				ZeroOcc	AltConf
2	A	1	Total	C	N	O	0	0
			36	29	3	4		
2	B	1	Total	C	N	O	0	0
			36	29	3	4		
2	C	1	Total	C	N	O	0	0
			36	29	3	4		

- Molecule 3 is water.

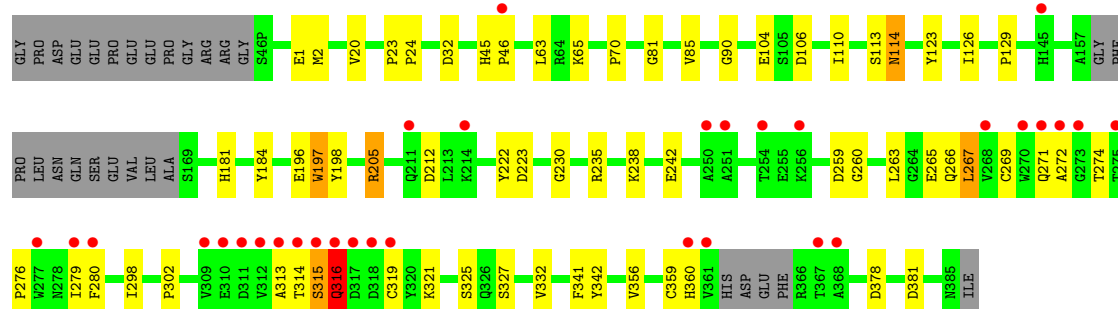
Mol	Chain	Residues	Atoms		ZeroOcc	AltConf
3	A	176	Total	O	0	0
			176	176		
3	B	170	Total	O	0	0
			170	170		
3	C	150	Total	O	0	0
			150	150		

### 3 Residue-property plots

These plots are drawn for all protein, RNA and DNA chains in the entry. The first graphic for a chain summarises the proportions of errors displayed in the second graphic. The second graphic shows the sequence view annotated by issues in geometry and electron density. Residues are color-coded according to the number of geometric quality criteria for which they contain at least one outlier: green = 0, yellow = 1, orange = 2 and red = 3 or more. A red dot above a residue indicates a poor fit to the electron density ( $RSRZ > 2$ ). Stretches of 2 or more consecutive residues without any outlier are shown as a green connector. Residues present in the sample, but not in the model, are shown in grey.

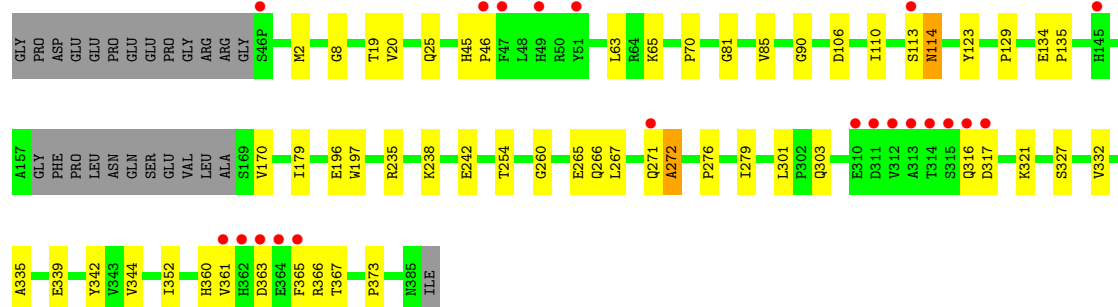
#### • Molecule 1: Beta-secretase 1

Chain A: 



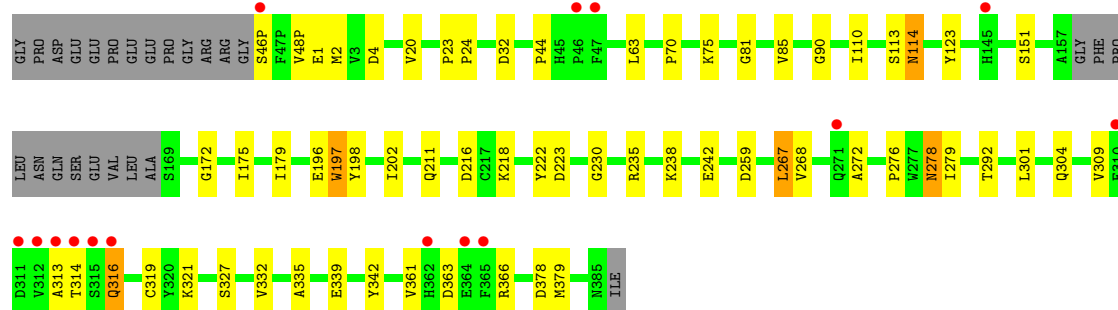
#### • Molecule 1: Beta-secretase 1

Chain B: 



#### • Molecule 1: Beta-secretase 1

Chain C: 



## 4 Data and refinement statistics

Property	Value	Source
Space group	P 1 21 1	Depositor
Cell constants a, b, c, $\alpha$ , $\beta$ , $\gamma$	82.65Å 103.71Å 101.82Å 90.00° 102.53° 90.00°	Depositor
Resolution (Å)	43.62 – 2.25 43.62 – 2.25	Depositor EDS
% Data completeness (in resolution range)	91.6 (43.62-2.25) 91.7 (43.62-2.25)	Depositor EDS
$R_{merge}$	0.07	Depositor
$R_{sym}$	0.07	Depositor
$\langle I/\sigma(I) \rangle$ <sup>1</sup>	6.54 (at 2.24Å)	Xtriage
Refinement program	CNX	Depositor
R, $R_{free}$	0.209 , 0.232 0.205 , 0.229	Depositor DCC
$R_{free}$ test set	3718 reflections (5.38%)	DCC
Wilson B-factor (Å <sup>2</sup> )	42.7	Xtriage
Anisotropy	0.300	Xtriage
Bulk solvent $k_{sol}$ (e/Å <sup>3</sup> ), $B_{sol}$ (Å <sup>2</sup> )	0.37 , 43.2	EDS
Estimated twinning fraction	No twinning to report.	Xtriage
L-test for twinning	$\langle  L  \rangle = 0.50$ , $\langle L^2 \rangle = 0.33$	Xtriage
Outliers	1 of 72802 reflections (0.001%)	Xtriage
$F_o, F_c$ correlation	0.95	EDS
Total number of atoms	9464	wwPDB-VP
Average B, all atoms (Å <sup>2</sup> )	46.0	wwPDB-VP

Xtriage's analysis on translational NCS is as follows: *The largest off-origin peak in the Patterson function is 4.04% of the height of the origin peak. No significant pseudotranslation is detected.*

<sup>1</sup>Intensities estimated from amplitudes.

## 5 Model quality i

### 5.1 Standard geometry i

Bond lengths and bond angles in the following residue types are not validated in this section: AYH

The Z score for a bond length (or angle) is the number of standard deviations the observed value is removed from the expected value. A bond length (or angle) with  $|Z| > 5$  is considered an outlier worth inspection. RMSZ is the root-mean-square of all Z scores of the bond lengths (or angles).

Mol	Chain	Bond lengths		Bond angles	
		RMSZ	$\# Z  > 5$	RMSZ	$\# Z  > 5$
1	A	0.34	0/3000	0.62	2/4076 (0.0%)
1	B	0.34	0/3041	0.61	0/4133
1	C	0.34	0/3041	0.61	0/4133
All	All	0.34	0/9082	0.61	2/12342 (0.0%)

There are no bond length outliers.

All (2) bond angle outliers are listed below:

Mol	Chain	Res	Type	Atoms	Z	Observed(°)	Ideal(°)
1	A	342	TYR	N-CA-C	-5.24	96.87	111.00
1	A	359	CYS	CA-CB-SG	5.04	123.07	114.00

There are no chirality outliers.

There are no planarity outliers.

### 5.2 Close contacts i

In the following table, the Non-H and H(model) columns list the number of non-hydrogen atoms and hydrogen atoms in the chain respectively. The H(added) column lists the number of hydrogens added by MolProbity. The Clashes column lists the number of clashes within the asymmetric unit, and the number in parentheses is this value normalized per 1000 atoms of the molecule in the chain. The Symm-Clashes column gives symmetry related clashes, in the same way as for the Clashes column.

Mol	Chain	Non-H	H(model)	H(added)	Clashes	Symm-Clashes
1	A	2928	0	2848	41	0
1	B	2966	0	2875	31	0
1	C	2966	0	2875	45	0
2	A	36	0	47	0	0

*Continued on next page...*

*Continued from previous page...*

Mol	Chain	Non-H	H(model)	H(added)	Clashes	Symm-Clashes
2	B	36	0	47	0	0
2	C	36	0	47	0	0
3	A	176	0	0	4	0
3	B	170	0	0	1	0
3	C	150	0	0	6	0
All	All	9464	0	8739	113	0

Clashscore is defined as the number of clashes calculated for the entry per 1000 atoms (including hydrogens) of the entry. The overall clashscore for this entry is 6.

All (113) close contacts within the same asymmetric unit are listed below.

Atom-1	Atom-2	Distance(Å)	Clash(Å)
1:C:202:ILE:HD12	1:C:379:MET:HE2	1.64	0.79
1:C:202:ILE:CD1	1:C:379:MET:HG3	2.11	0.78
1:A:196:GLU:HG3	3:A:531:HOH:O	1.84	0.78
1:C:267:LEU:H	1:C:267:LEU:HD23	1.49	0.76
1:B:363:ASP:HB3	1:B:366:ARG:O	1.90	0.72
1:C:335:ALA:O	1:C:339:GLU:HG3	1.93	0.68
1:C:196:GLU:HG3	3:C:535:HOH:O	1.95	0.66
1:A:106:ASP:OD1	1:C:1:GLU:HG2	1.97	0.64
1:A:276:PRO:O	1:A:279:ILE:HG12	1.98	0.64
1:C:363:ASP:HB3	1:C:366:ARG:O	1.98	0.63
1:A:2:MET:HG2	1:A:90:GLY:HA2	1.82	0.62
1:C:304:GLN:HG3	1:C:361:VAL:HG11	1.81	0.62
1:B:260:GLY:HA3	1:B:266:GLN:HE21	1.65	0.60
1:C:276:PRO:O	1:C:279:ILE:HG12	2.02	0.60
1:B:335:ALA:O	1:B:339:GLU:HG3	2.01	0.60
1:A:205:ARG:HD3	1:A:212:ASP:OD2	2.02	0.59
1:C:267:LEU:HD23	1:C:267:LEU:N	2.17	0.59
1:C:202:ILE:CD1	1:C:379:MET:HE2	2.32	0.59
1:C:235:ARG:HB2	1:C:332:VAL:HB	1.85	0.58
1:B:196:GLU:HG3	3:B:490:HOH:O	2.02	0.58
1:C:2:MET:HG2	1:C:90:GLY:HA2	1.84	0.58
1:C:20:VAL:HG12	1:C:85:VAL:HG22	1.86	0.57
1:A:104:GLU:OE1	1:C:46(P):SER:HA	2.04	0.57
1:A:260:GLY:HA3	1:A:266:GLN:HE21	1.70	0.56
1:B:20:VAL:HG12	1:B:85:VAL:HG22	1.88	0.56
1:A:123:TYR:CZ	1:A:196:GLU:HG2	2.42	0.55
1:B:365:PHE:CD1	1:B:366:ARG:HG3	2.41	0.55
1:A:20:VAL:HG12	1:A:85:VAL:HG22	1.88	0.55
1:B:2:MET:HG2	1:B:90:GLY:HA2	1.88	0.55
1:B:235:ARG:HB2	1:B:332:VAL:HB	1.90	0.54

*Continued on next page...*



*Continued from previous page...*

Atom-1	Atom-2	Distance(Å)	Clash(Å)
1:C:202:ILE:HD13	1:C:379:MET:HG3	1.89	0.54
1:A:325:SER:HB3	3:A:537:HOH:O	2.08	0.53
1:B:271:GLN:HA	1:B:317:ASP:OD1	2.08	0.53
1:A:280:PHE:HB3	1:A:302:PRO:HB3	1.92	0.52
1:C:309:VAL:HG11	1:C:321:LYS:HG3	1.92	0.52
1:B:301:LEU:HD11	1:B:367:THR:HA	1.92	0.52
1:C:202:ILE:HD11	1:C:379:MET:HG3	1.88	0.51
1:A:314:THR:HB	1:A:316:GLN:NE2	2.26	0.51
1:C:216:ASP:HA	3:C:536:HOH:O	2.10	0.51
1:C:238:LYS:O	1:C:242:GLU:HG3	2.12	0.50
1:A:235:ARG:HB2	1:A:332:VAL:HB	1.94	0.50
1:B:110:ILE:HB	1:B:113:SER:HB3	1.93	0.49
1:A:104:GLU:HG2	1:C:48(P):VAL:HB	1.94	0.49
1:C:123:TYR:CZ	1:C:196:GLU:HG2	2.48	0.49
1:C:110:ILE:HB	1:C:113:SER:HB3	1.94	0.49
1:B:238:LYS:O	1:B:242:GLU:HG3	2.12	0.49
1:B:267:LEU:HD23	1:B:267:LEU:H	1.78	0.49
1:B:276:PRO:O	1:B:279:ILE:HG12	2.13	0.48
1:A:269:CYS:HA	1:A:319:CYS:HA	1.95	0.48
1:A:378:ASP:HB3	1:A:381:ASP:OD2	2.14	0.48
1:B:260:GLY:HA3	1:B:266:GLN:HG3	1.93	0.48
1:A:314:THR:HB	1:A:316:GLN:HE22	1.78	0.48
1:B:8:GLY:O	1:B:170:VAL:HG22	2.13	0.48
1:C:278:ASN:HD22	1:C:278:ASN:H	1.60	0.48
1:B:123:TYR:CZ	1:B:196:GLU:HG2	2.48	0.47
1:A:238:LYS:O	1:A:242:GLU:HG3	2.15	0.47
1:A:113:SER:N	3:A:420:HOH:O	2.48	0.47
1:B:265:GLU:O	1:B:321:LYS:HE2	2.14	0.47
1:B:179:ILE:HG23	1:B:342:TYR:HE2	1.78	0.47
1:B:272:ALA:HB2	1:B:316:GLN:O	2.14	0.47
1:A:235:ARG:HB3	1:A:327:SER:HB2	1.96	0.47
1:A:65:LYS:HE2	1:A:129:PRO:HG3	1.97	0.47
1:A:110:ILE:HB	1:A:113:SER:HB3	1.95	0.46
1:A:298:ILE:HB	1:A:341:PHE:CZ	2.50	0.46
1:C:63:LEU:HG	1:C:81:GLY:HA2	1.98	0.46
1:C:32:ASP:OD1	1:C:230:GLY:HA3	2.16	0.46
1:B:235:ARG:HB3	1:B:327:SER:HB2	1.99	0.45
1:B:303:GLN:HB2	1:B:361:VAL:HG11	1.98	0.45
1:A:314:THR:HG22	1:A:315:SER:N	2.32	0.45
1:C:211:GLN:HB2	3:C:526:HOH:O	2.17	0.45
1:C:235:ARG:HB3	1:C:327:SER:HB2	1.98	0.45
1:A:113:SER:O	1:A:114:ASN:CB	2.65	0.45

*Continued on next page...*

*Continued from previous page...*

Atom-1	Atom-2	Distance(Å)	Clash(Å)
1:A:267:LEU:HD23	1:A:267:LEU:N	2.31	0.45
1:B:63:LEU:HG	1:B:81:GLY:HA2	1.98	0.45
1:B:113:SER:O	1:B:114:ASN:CB	2.65	0.44
1:A:1:GLU:HG2	1:B:106:ASP:OD1	2.17	0.44
1:C:278:ASN:HD22	1:C:278:ASN:N	2.15	0.44
1:C:378:ASP:HB2	3:C:487:HOH:O	2.15	0.44
1:A:259:ASP:O	1:A:263:LEU:HG	2.17	0.44
1:A:63:LEU:HG	1:A:81:GLY:HA2	1.99	0.44
1:C:179:ILE:HG23	1:C:342:TYR:HE2	1.83	0.44
1:C:23:PRO:HA	1:C:24:PRO:HD3	1.87	0.44
1:A:222:TYR:HA	1:A:223:ASP:HA	1.69	0.44
1:B:19:THR:HA	1:B:25:GLN:O	2.18	0.44
1:A:265:GLU:O	1:A:321:LYS:HE2	2.17	0.44
1:C:272:ALA:HB2	1:C:316:GLN:O	2.17	0.44
1:A:271:GLN:HB3	1:A:274:THR:HG21	1.99	0.44
1:B:301:LEU:HD11	1:B:367:THR:CA	2.48	0.44
1:C:44:PRO:HA	3:C:440:HOH:O	2.18	0.43
1:A:23:PRO:HA	1:A:24:PRO:HD3	1.88	0.43
1:B:65:LYS:HE2	1:B:129:PRO:HG3	2.00	0.43
1:C:151:SER:OG	1:C:175:ILE:HB	2.18	0.43
1:A:32:ASP:OD1	1:A:230:GLY:HA3	2.18	0.43
1:C:222:TYR:HA	1:C:223:ASP:HA	1.67	0.43
1:A:184:TYR:HB2	1:A:356:VAL:O	2.19	0.42
1:B:45:HIS:HA	1:B:46:PRO:HD3	1.91	0.42
1:C:197:TRP:CG	1:C:198:TYR:N	2.86	0.42
1:A:271:GLN:HB3	1:A:274:THR:CG2	2.50	0.42
1:C:113:SER:O	1:C:114:ASN:CB	2.68	0.41
1:B:344:VAL:O	1:B:352:ILE:HA	2.21	0.41
1:C:292:THR:HG21	1:C:378:ASP:HB3	2.02	0.41
1:A:197:TRP:CG	1:A:198:TYR:N	2.88	0.41
1:C:4:ASP:HA	1:C:172:GLY:O	2.21	0.41
1:C:268:VAL:O	1:C:319:CYS:HA	2.21	0.41
1:A:181:HIS:HB3	3:A:540:HOH:O	2.19	0.41
1:A:114:ASN:HD22	1:A:114:ASN:HA	1.67	0.41
1:C:75:LYS:HE2	3:C:400:HOH:O	2.20	0.41
1:C:216:ASP:OD1	1:C:218:LYS:HB2	2.21	0.41
1:B:134:GLU:HA	1:B:135:PRO:HD3	1.93	0.40
1:C:301:LEU:HD12	1:C:361:VAL:HG23	2.04	0.40
1:C:314:THR:HB	1:C:316:GLN:OE1	2.21	0.40
1:A:126:ILE:HG23	1:A:197:TRP:HB2	2.03	0.40
1:A:45:HIS:HA	1:A:46:PRO:HD3	1.92	0.40

There are no symmetry-related clashes.

## 5.3 Torsion angles

### 5.3.1 Protein backbone ⓘ

In the following table, the Percentiles column shows the percent Ramachandran outliers of the chain as a percentile score with respect to all X-ray entries followed by that with respect to entries of similar resolution. The Analysed column shows the number of residues for which the backbone conformation was analysed, and the total number of residues.

Mol	Chain	Analysed	Favoured	Allowed	Outliers	Percentiles	
1	A	367/402 (91%)	350 (95%)	12 (3%)	5 (1%)	16	10
1	B	373/402 (93%)	354 (95%)	16 (4%)	3 (1%)	27	24
1	C	373/402 (93%)	357 (96%)	13 (4%)	3 (1%)	27	24
All	All	1113/1206 (92%)	1061 (95%)	41 (4%)	11 (1%)	22	17

All (11) Ramachandran outliers are listed below:

Mol	Chain	Res	Type
1	B	360	HIS
1	C	313	ALA
1	A	316	GLN
1	B	272	ALA
1	C	316	GLN
1	A	315	SER
1	A	272	ALA
1	A	313	ALA
1	A	70	PRO
1	C	70	PRO
1	B	70	PRO

### 5.3.2 Protein sidechains ⓘ

In the following table, the Percentiles column shows the percent sidechain outliers of the chain as a percentile score with respect to all X-ray entries followed by that with respect to entries of similar resolution. The Analysed column shows the number of residues for which the sidechain conformation was analysed, and the total number of residues.

Mol	Chain	Analysed	Rotameric	Outliers	Percentiles	
1	A	318/342 (93%)	312 (98%)	6 (2%)	69	78
1	B	322/342 (94%)	318 (99%)	4 (1%)	82	89
1	C	322/342 (94%)	317 (98%)	5 (2%)	75	84

*Continued on next page...*

*Continued from previous page...*

Mol	Chain	Analysed	Rotameric	Outliers	Percentiles	
All	All	962/1026 (94%)	947 (98%)	15 (2%)	75	84

All (15) residues with a non-rotameric sidechain are listed below:

Mol	Chain	Res	Type
1	A	114	ASN
1	A	197	TRP
1	A	205	ARG
1	A	267	LEU
1	A	316	GLN
1	A	360	HIS
1	B	114	ASN
1	B	197	TRP
1	B	254	THR
1	B	373	PRO
1	C	114	ASN
1	C	197	TRP
1	C	259	ASP
1	C	267	LEU
1	C	278	ASN

Some sidechains can be flipped to improve hydrogen bonding and reduce clashes. All (21) such sidechains are listed below:

Mol	Chain	Res	Type
1	A	73	GLN
1	A	114	ASN
1	A	211	GLN
1	A	266	GLN
1	A	271	GLN
1	A	316	GLN
1	A	326	GLN
1	B	73	GLN
1	B	114	ASN
1	B	266	GLN
1	B	271	GLN
1	B	316	GLN
1	B	326	GLN
1	C	73	GLN
1	C	114	ASN
1	C	211	GLN
1	C	271	GLN

*Continued on next page...*

*Continued from previous page...*

Mol	Chain	Res	Type
1	C	278	ASN
1	C	294	GLN
1	C	316	GLN
1	C	326	GLN

### 5.3.3 RNA ⓘ

There are no RNA chains in this entry.

## 5.4 Non-standard residues in protein, DNA, RNA chains ⓘ

There are no non-standard protein/DNA/RNA residues in this entry.

## 5.5 Carbohydrates ⓘ

There are no carbohydrates in this entry.

## 5.6 Ligand geometry ⓘ

3 ligands are modelled in this entry.

In the following table, the Counts columns list the number of bonds (or angles) for which Mogul statistics could be retrieved, the number of bonds (or angles) that are observed in the model and the number of bonds (or angles) that are defined in the chemical component dictionary. The Link column lists molecule types, if any, to which the group is linked. The Z score for a bond length (or angle) is the number of standard deviations the observed value is removed from the expected value. A bond length (or angle) with  $|Z| > 2$  is considered an outlier worth inspection. RMSZ is the root-mean-square of all Z scores of the bond lengths (or angles).

Mol	Type	Chain	Res	Link	Bond lengths			Bond angles		
					Counts	RMSZ	$\# Z  > 2$	Counts	RMSZ	$\# Z  > 2$
2	AYH	A	387	-	37,37,37	1.10	1 (2%)	50,50,50	1.52	6 (12%)
2	AYH	B	387	-	37,37,37	1.20	2 (5%)	50,50,50	1.59	8 (16%)
2	AYH	C	387	-	37,37,37	1.18	2 (5%)	50,50,50	1.52	7 (14%)

In the following table, the Chirals column lists the number of chiral outliers, the number of chiral centers analysed, the number of these observed in the model and the number defined in the chemical component dictionary. Similar counts are reported in the Torsion and Rings columns. '-' means no outliers of that kind were identified.

Mol	Type	Chain	Res	Link	Chirals	Torsions	Rings
2	AYH	A	387	-	-	0/40/50/50	0/2/2/2
2	AYH	B	387	-	-	0/40/50/50	0/2/2/2
2	AYH	C	387	-	-	0/40/50/50	0/2/2/2

All (5) bond length outliers are listed below:

Mol	Chain	Res	Type	Atoms	Z	Observed(Å)	Ideal(Å)
2	B	387	AYH	C67-C56	4.16	1.59	1.53
2	A	387	AYH	C67-C56	4.15	1.59	1.53
2	C	387	AYH	C67-C56	3.75	1.58	1.53
2	C	387	AYH	C76-C67	2.70	1.56	1.53
2	B	387	AYH	C80-C67	2.48	1.55	1.53

All (21) bond angle outliers are listed below:

Mol	Chain	Res	Type	Atoms	Z	Observed(°)	Ideal(°)
2	B	387	AYH	C12-C9-C5	-5.46	107.02	114.11
2	A	387	AYH	C12-C9-C5	-5.38	107.12	114.11
2	C	387	AYH	C12-C9-C5	-5.23	107.32	114.11
2	B	387	AYH	C67-N68-C70	-4.96	119.58	126.56
2	C	387	AYH	C67-N68-C70	-4.76	119.86	126.56
2	A	387	AYH	C67-N68-C70	-4.74	119.89	126.56
2	C	387	AYH	C3-N1-C49	-3.22	117.19	123.24
2	B	387	AYH	C5-C3-N1	3.10	115.13	109.61
2	A	387	AYH	C3-N1-C49	-2.79	117.99	123.24
2	A	387	AYH	C5-C3-N1	2.76	114.52	109.61
2	B	387	AYH	C3-N1-C49	-2.73	118.09	123.24
2	C	387	AYH	C5-C3-N1	2.69	114.39	109.61
2	C	387	AYH	C53-C56-C67	-2.61	109.98	113.94
2	B	387	AYH	C53-C56-C67	-2.56	110.06	113.94
2	A	387	AYH	C53-C56-C67	-2.54	110.08	113.94
2	B	387	AYH	C14-C12-C18	-2.50	105.72	109.50
2	C	387	AYH	C80-C67-C76	-2.48	105.93	108.96
2	B	387	AYH	C53-C56-C58	2.45	111.64	108.41
2	B	387	AYH	C80-C67-C76	-2.25	106.22	108.96
2	C	387	AYH	C14-C12-C18	-2.15	106.26	109.50
2	A	387	AYH	C14-C12-C18	-2.10	106.33	109.50

There are no chirality outliers.

There are no torsion outliers.

There are no ring outliers.

## 5.7 Other polymers ⓘ

There are no such residues in this entry.

## 5.8 Polymer linkage issues

There are no chain breaks in this entry.

## 6 Fit of model and data ⓘ

### 6.1 Protein, DNA and RNA chains ⓘ

In the following table, the column labelled ‘#RSRZ> 2’ contains the number (and percentage) of RSRZ outliers, followed by percent RSRZ outliers for the chain as percentile scores relative to all X-ray entries and entries of similar resolution. The OWAB column contains the minimum, median, 95<sup>th</sup> percentile and maximum values of the occupancy-weighted average B-factor per residue. The column labelled ‘Q< 0.9’ lists the number of (and percentage) of residues with an average occupancy less than 0.9.

Mol	Chain	Analysed	<RSRZ>	#RSRZ>2	OWAB(Å <sup>2</sup> )	Q<0.9
1	A	373/402 (92%)	0.36	32 (8%) 11 13	25, 42, 82, 112	0
1	B	377/402 (93%)	0.26	21 (5%) 24 27	26, 43, 77, 112	0
1	C	377/402 (93%)	0.24	15 (3%) 36 42	27, 44, 72, 107	0
All	All	1127/1206 (93%)	0.29	68 (6%) 21 24	25, 43, 78, 112	0

All (68) RSRZ outliers are listed below:

Mol	Chain	Res	Type	RSRZ
1	A	312	VAL	9.9
1	B	365	PHE	8.4
1	B	312	VAL	8.2
1	B	313	ALA	6.7
1	B	314	THR	6.5
1	A	311	ASP	6.2
1	A	310	GLU	6.0
1	B	315	SER	5.9
1	A	313	ALA	5.9
1	A	315	SER	5.8
1	C	312	VAL	5.1
1	A	314	THR	4.9
1	C	362	HIS	4.8
1	B	364	GLU	4.7
1	C	364	GLU	4.7
1	C	365	PHE	4.7
1	C	311	ASP	4.5
1	A	273	GLY	4.5
1	A	360	HIS	4.4
1	C	314	THR	4.4
1	A	316	GLN	3.8
1	C	316	GLN	3.6
1	B	311	ASP	3.6

*Continued on next page...*



*Continued from previous page...*

Mol	Chain	Res	Type	RSRZ
1	C	315	SER	3.6
1	C	313	ALA	3.5
1	A	268	VAL	3.4
1	C	47	PHE	3.3
1	B	316	GLN	3.3
1	B	310	GLU	3.2
1	B	47	PHE	3.2
1	C	310	GLU	3.1
1	A	270	TRP	3.1
1	A	272	ALA	3.1
1	A	271	GLN	3.1
1	A	317	ASP	3.0
1	B	361	VAL	3.0
1	A	367	THR	3.0
1	A	309	VAL	3.0
1	A	254	THR	2.8
1	C	145	HIS	2.7
1	A	256	LYS	2.7
1	C	271	GLN	2.7
1	A	251	ALA	2.6
1	A	318	ASP	2.6
1	A	319	CYS	2.5
1	A	368	ALA	2.5
1	B	46	PRO	2.5
1	A	279	ILE	2.4
1	B	113	SER	2.4
1	B	271	GLN	2.3
1	A	145	HIS	2.3
1	B	317	ASP	2.3
1	A	280	PHE	2.3
1	A	250	ALA	2.3
1	A	214	LYS	2.3
1	A	46	PRO	2.2
1	C	46(P)	SER	2.2
1	B	49	HIS	2.2
1	C	46	PRO	2.1
1	A	361	VAL	2.1
1	B	51	TYR	2.1
1	B	145	HIS	2.1
1	B	362	HIS	2.1
1	A	211	GLN	2.1
1	B	363	ASP	2.0

*Continued on next page...*

*Continued from previous page...*

Mol	Chain	Res	Type	RSRZ
1	A	277	TRP	2.0
1	B	46(P)	SER	2.0
1	A	275	THR	2.0

## 6.2 Non-standard residues in protein, DNA, RNA chains ⓘ

There are no non-standard protein/DNA/RNA residues in this entry.

## 6.3 Carbohydrates ⓘ

There are no carbohydrates in this entry.

## 6.4 Ligands ⓘ

In the following table, the Atoms column lists the number of modelled atoms in the group and the number defined in the chemical component dictionary. LLDF column lists the quality of electron density of the group with respect to its neighbouring residues in protein, DNA or RNA chains. The B-factors column lists the minimum, median, 95<sup>th</sup> percentile and maximum values of B factors of atoms in the group. The column labelled 'Q < 0.9' lists the number of atoms with occupancy less than 0.9.

Mol	Type	Chain	Res	Atoms	RSR	LLDF	B-factors(Å <sup>2</sup> )	Q<0.9
2	AYH	B	387	36/36	0.17	-	27,33,38,40	0
2	AYH	A	387	36/36	0.14	-	26,34,39,41	0
2	AYH	C	387	36/36	0.14	-	27,32,38,45	0

## 6.5 Other polymers ⓘ

There are no such residues in this entry.