



Full wwPDB X-ray Structure Validation Report ⓘ

Mar 1, 2014 – 04:37 AM GMT

PDB ID : 3K5G
Title : Human bace-1 complex with bjc060
Authors : Rondeau, J.-M.
Deposited on : 2009-10-07
Resolution : 2.00 Å(reported)

This is a full wwPDB validation report for a publicly released PDB entry.
We welcome your comments at validation@mail.wwpdb.org
A user guide is available at <http://wwpdb.org/ValidationPDFNotes.html>

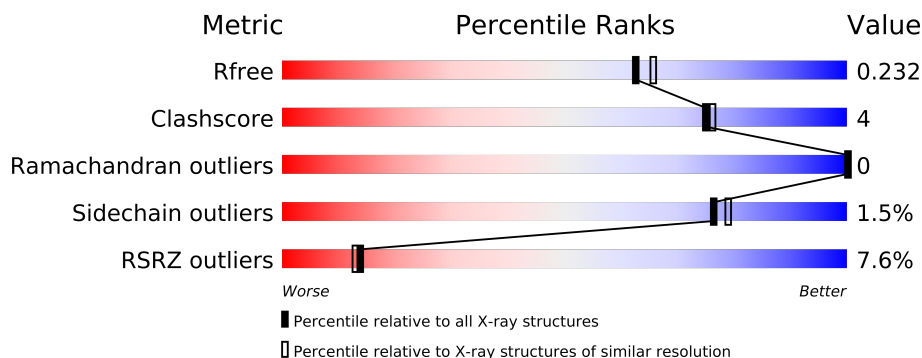
The following versions of software and data (see [references](#)) were used in the production of this report:

MolProbity : 4.02b-467
Mogul : 1.15 2013
Xtriage (Phenix) : dev-1323
EDS : stable22639
Percentile statistics : 21963
Refmac : 5.8.0049
CCP4 : 6.3.0 (Settle)
Ideal geometry (proteins) : Engh & Huber (2001)
Ideal geometry (DNA, RNA) : Parkinson et. al. (1996)
Validation Pipeline (wwPDB-VP) : stable22683

1 Overall quality at a glance

The reported resolution of this entry is 2.00 Å.

Percentile scores (ranging between 0-100) for global validation metrics of the entry are shown in the following graphic. The table shows the number of entries on which the scores are based.



Metric	Whole archive (#Entries)	Similar resolution (#Entries, resolution range(Å))
R_{free}	66092	4888 (2.00-2.00)
Clashscore	79885	6188 (2.00-2.00)
Ramachandran outliers	78287	6102 (2.00-2.00)
Sidechain outliers	78261	6100 (2.00-2.00)
RSRZ outliers	66119	4890 (2.00-2.00)

The table below summarises the geometric issues observed across the polymeric chains and their fit to the electron density. The red, orange, yellow and green segments on the lower bar indicate the fraction of residues that contain outliers for ≥ 3 , 2, 1 and 0 types of geometric quality criteria. The upper red bar (where present) indicates the fraction of residues that have poor fit to the electron density.

Mol	Chain	Length	Quality of chain
1	A	402	
1	B	402	
1	C	402	

2 Entry composition

There are 3 unique types of molecules in this entry. The entry contains 9773 atoms, of which 0 are hydrogen and 0 are deuterium.

In the tables below, the ZeroOcc column contains the number of atoms modelled with zero occupancy, the AltConf column contains the number of residues with at least one atom in alternate conformation and the Trace column contains the number of residues modelled with at most 2 atoms.

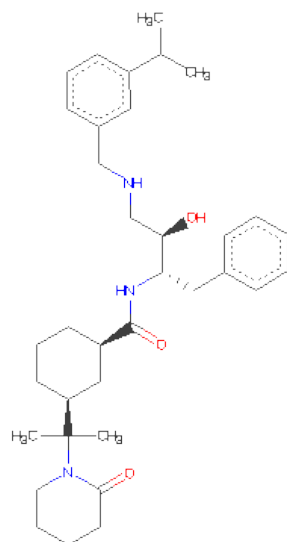
- Molecule 1 is a protein called Beta-secretase 1.

Mol	Chain	Residues	Atoms					ZeroOcc	AltConf	Trace
1	A	377	Total	C	N	O	S	0	0	0
			2966	1898	493	561	14			
1	B	377	Total	C	N	O	S	0	0	0
			2966	1898	493	561	14			
1	C	381	Total	C	N	O	S	0	0	0
			2993	1917	497	565	14			

There are 6 discrepancies between the modelled and reference sequences:

Chain	Residue	Modelled	Actual	Comment	Reference
A	33P	GLY	-	expression tag	UNP P56817
A	34P	PRO	-	expression tag	UNP P56817
B	33P	GLY	-	expression tag	UNP P56817
B	34P	PRO	-	expression tag	UNP P56817
C	33P	GLY	-	expression tag	UNP P56817
C	34P	PRO	-	expression tag	UNP P56817

- Molecule 2 is (1R,3S)-N-[(1S,2R)-1-BENZYL-2-HYDROXY-3-{[3-(1-METHYLETHYL)BENZYL]AMINO}PROPYL]-3-[1-METHYL-1-(2-OXOPIPERIDIN-1-YL)ETHYL]CYCLOHEXANECARBOXAMIDE (three-letter code: BJC) (formula: C₃₅H₅₁N₃O₃).



Mol	Chain	Residues	Atoms				ZeroOcc	AltConf
2	A	1	Total	C	N	O	0	0
			41	35	3	3		
2	B	1	Total	C	N	O	0	0
			41	35	3	3		
2	C	1	Total	C	N	O	0	0
			41	35	3	3		

- Molecule 3 is water.

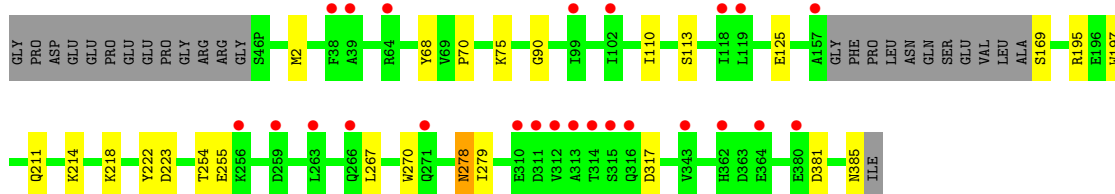
Mol	Chain	Residues	Atoms		ZeroOcc	AltConf
3	A	257	Total	O	0	0
			257	257		
3	B	218	Total	O	0	0
			218	218		
3	C	250	Total	O	0	0
			250	250		

3 Residue-property plots

These plots are drawn for all protein, RNA and DNA chains in the entry. The first graphic for a chain summarises the proportions of errors displayed in the second graphic. The second graphic shows the sequence view annotated by issues in geometry and electron density. Residues are color-coded according to the number of geometric quality criteria for which they contain at least one outlier: green = 0, yellow = 1, orange = 2 and red = 3 or more. A red dot above a residue indicates a poor fit to the electron density ($RSRZ > 2$). Stretches of 2 or more consecutive residues without any outlier are shown as a green connector. Residues present in the sample, but not in the model, are shown in grey.

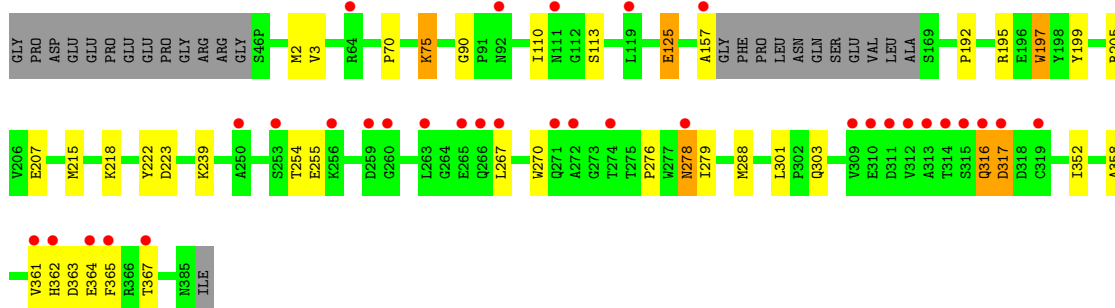
• Molecule 1: Beta-secretase 1

Chain A: 



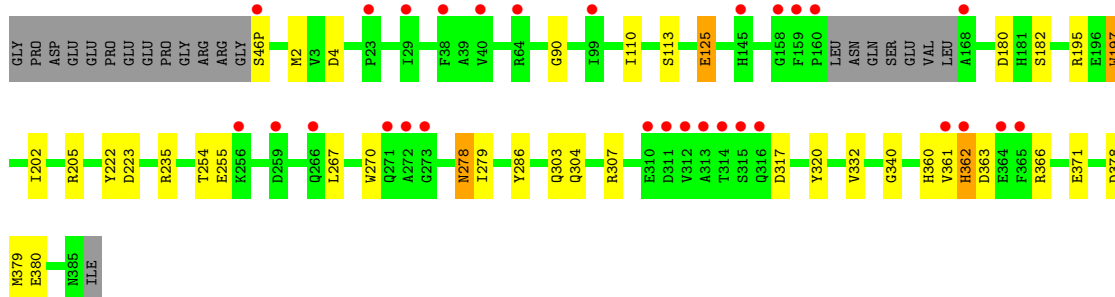
• Molecule 1: Beta-secretase 1

Chain B: 



• Molecule 1: Beta-secretase 1

Chain C: 



4 Data and refinement statistics

Property	Value	Source
Space group	P 1 21 1	Depositor
Cell constants a, b, c, α , β , γ	81.40Å 103.41Å 99.81Å 90.00° 103.94° 90.00°	Depositor
Resolution (Å)	24.20 – 2.00 24.20 – 2.00	Depositor EDS
% Data completeness (in resolution range)	98.9 (24.20-2.00) 99.0 (24.20-2.00)	Depositor EDS
R_{merge}	0.07	Depositor
R_{sym}	0.07	Depositor
$\langle I/\sigma(I) \rangle$ ¹	1.41 (at 2.01Å)	Xtriage
Refinement program	CNX 2002	Depositor
R, R_{free}	0.206 , 0.234 0.204 , 0.232	Depositor DCC
R_{free} test set	5376 reflections (5.31%)	DCC
Wilson B-factor (Å ²)	37.2	Xtriage
Anisotropy	0.368	Xtriage
Bulk solvent k_{sol} (e/Å ³), B_{sol} (Å ²)	0.38 , 51.7	EDS
Estimated twinning fraction	No twinning to report.	Xtriage
L-test for twinning	$\langle L \rangle = 0.50$, $\langle L^2 \rangle = 0.33$	Xtriage
Outliers	0 of 106546 reflections	Xtriage
F_o, F_c correlation	0.96	EDS
Total number of atoms	9773	wwPDB-VP
Average B, all atoms (Å ²)	43.0	wwPDB-VP

Xtriage's analysis on translational NCS is as follows: *The largest off-origin peak in the Patterson function is 3.76% of the height of the origin peak. No significant pseudotranslation is detected.*

¹Intensities estimated from amplitudes.

5 Model quality

5.1 Standard geometry

Bond lengths and bond angles in the following residue types are not validated in this section: BJC

The Z score for a bond length (or angle) is the number of standard deviations the observed value is removed from the expected value. A bond length (or angle) with $|Z| > 5$ is considered an outlier worth inspection. RMSZ is the root-mean-square of all Z scores of the bond lengths (or angles).

Mol	Chain	Bond lengths		Bond angles	
		RMSZ	$\# Z > 5$	RMSZ	$\# Z > 5$
1	A	0.42	0/3041	0.54	0/4133
1	B	0.40	0/3041	0.52	0/4133
1	C	0.41	0/3070	0.53	0/4173
All	All	0.41	0/9152	0.53	0/12439

Chiral center outliers are detected by calculating the chiral volume of a chiral center and verifying if the center is modelled as a planar moiety or with the opposite hand. A planarity outlier is detected by checking planarity of atoms in a peptide group, atoms in a mainchain group or atoms of a sidechain that are expected to be planar.

Mol	Chain	#Chirality outliers	#Planarity outliers
1	C	0	1

There are no bond length outliers.

There are no bond angle outliers.

There are no chirality outliers.

All (1) planarity outliers are listed below:

Mol	Chain	Res	Type	Group
1	C	340	GLY	Peptide

5.2 Close contacts

In the following table, the Non-H and H(model) columns list the number of non-hydrogen atoms and hydrogen atoms in the chain respectively. The H(added) column lists the number of hydrogens added by MolProbity. The Clashes column lists the number of clashes within the asymmetric unit, and the number in parentheses is this value normalized per 1000 atoms of the molecule in the chain. The Symm-Clashes column gives symmetry related clashes, in the same way as for the Clashes column.

Mol	Chain	Non-H	H(model)	H(added)	Clashes	Symm-Clashes
1	A	2966	0	2875	15	0
1	B	2966	0	2875	31	0
1	C	2993	0	2899	27	0
2	A	41	0	51	0	0
2	B	41	0	51	0	0
2	C	41	0	51	0	0
3	A	257	0	0	1	0
3	B	218	0	0	3	0
3	C	250	0	0	4	0
All	All	9773	0	8802	71	0

Clashscore is defined as the number of clashes calculated for the entry per 1000 atoms (including hydrogens) of the entry. The overall clashscore for this entry is 4.

All (71) close contacts within the same asymmetric unit are listed below.

Atom-1	Atom-2	Distance(Å)	Clash(Å)
1:B:215:MET:HE3	1:B:239:LYS:HE3	1.56	0.88
1:B:267:LEU:HD23	1:B:267:LEU:H	1.42	0.85
1:A:267:LEU:HD23	1:A:267:LEU:H	1.41	0.84
1:C:267:LEU:H	1:C:267:LEU:HD23	1.41	0.82
1:B:316:GLN:HE21	1:B:316:GLN:HA	1.45	0.80
1:B:270:TRP:O	1:B:317:ASP:HB3	1.94	0.67
1:C:362:HIS:HA	3:C:626:HOH:O	1.99	0.61
1:A:270:TRP:O	1:A:317:ASP:HB3	2.02	0.60
1:B:303:GLN:NE2	1:B:363:ASP:HB3	2.19	0.58
1:A:2:MET:HG2	1:A:90:GLY:HA2	1.85	0.57
1:C:278:ASN:HD22	1:C:278:ASN:H	1.52	0.57
1:B:157:ALA:HB2	3:B:714:HOH:O	2.04	0.56
1:B:125:GLU:O	1:B:125:GLU:HG3	2.04	0.56
1:C:2:MET:HG2	1:C:90:GLY:HA2	1.89	0.55
1:A:125:GLU:OE2	1:A:195:ARG:NH2	2.36	0.55
1:B:2:MET:HG2	1:B:90:GLY:HA2	1.88	0.54
1:C:180:ASP:OD2	1:C:182:SER:HB3	2.09	0.53
1:B:205:ARG:NH2	1:B:207:GLU:OE2	2.41	0.53
1:A:278:ASN:H	1:A:278:ASN:HD22	1.58	0.52
1:C:254:THR:HG22	1:C:255:GLU:HG2	1.92	0.51
1:C:125:GLU:OE2	1:C:195:ARG:NH2	2.26	0.51
1:C:380:GLU:H	1:C:380:GLU:CD	2.14	0.50
1:B:361:VAL:HG12	1:B:362:HIS:N	2.27	0.49
1:B:254:THR:HG22	1:B:255:GLU:HG2	1.94	0.49
1:B:303:GLN:HE22	1:B:363:ASP:HB3	1.77	0.49
1:B:125:GLU:HG2	1:B:197:TRP:HB3	1.94	0.49
1:C:304:GLN:HG3	1:C:361:VAL:HG21	1.95	0.48

Continued on next page...

Continued from previous page...

Atom-1	Atom-2	Distance(Å)	Clash(Å)
1:A:267:LEU:CD2	1:A:267:LEU:H	2.21	0.48
1:A:218:LYS:HG3	1:A:381:ASP:O	2.14	0.48
1:B:278:ASN:H	1:B:278:ASN:HD22	1.61	0.48
1:B:267:LEU:CD2	1:B:267:LEU:H	2.22	0.48
1:B:358:ALA:HB1	3:B:490:HOH:O	2.14	0.47
1:B:192:PRO:HD2	1:B:288:MET:HE2	1.96	0.47
1:C:222:TYR:HA	1:C:223:ASP:HA	1.71	0.47
1:A:254:THR:HG22	1:A:255:GLU:HG2	1.97	0.47
1:C:125:GLU:HG2	1:C:197:TRP:HB3	1.98	0.46
1:C:363:ASP:HB3	1:C:366:ARG:O	2.16	0.46
1:C:125:GLU:HG3	1:C:125:GLU:O	2.15	0.46
1:C:4:ASP:HB2	3:C:640:HOH:O	2.16	0.46
1:C:267:LEU:CD2	1:C:267:LEU:H	2.21	0.46
1:B:364:GLU:HG3	1:B:365:PHE:CD1	2.52	0.45
1:A:214:LYS:NZ	1:C:371:GLU:OE1	2.50	0.45
1:B:125:GLU:HG2	1:B:197:TRP:CB	2.46	0.45
1:B:364:GLU:HG3	1:B:365:PHE:CE1	2.52	0.45
1:B:301:LEU:HD11	1:B:367:THR:HA	1.99	0.45
1:B:222:TYR:HA	1:B:223:ASP:HA	1.73	0.44
1:A:68:TYR:CD1	1:B:3:VAL:HG11	2.52	0.44
1:B:110:ILE:O	1:B:113:SER:HB3	2.17	0.44
1:A:110:ILE:O	1:A:113:SER:HB3	2.19	0.43
1:C:380:GLU:N	1:C:380:GLU:CD	2.71	0.43
1:C:378:ASP:HB2	3:C:506:HOH:O	2.18	0.43
1:C:46(P):SER:N	3:C:710:HOH:O	2.49	0.43
1:C:270:TRP:O	1:C:317:ASP:HB3	2.17	0.43
1:B:255:GLU:HG3	1:B:279:ILE:CD1	2.48	0.43
1:A:255:GLU:HG3	1:A:279:ILE:CD1	2.49	0.43
1:B:218:LYS:HE3	3:B:572:HOH:O	2.18	0.43
1:B:70:PRO:HA	1:B:75:LYS:HB3	2.01	0.43
1:C:255:GLU:HG3	1:C:279:ILE:CD1	2.48	0.42
1:B:316:GLN:HA	1:B:316:GLN:NE2	2.24	0.42
1:A:70:PRO:HA	1:A:75:LYS:HB3	2.02	0.42
1:C:303:GLN:HB2	1:C:361:VAL:HG11	2.02	0.42
1:C:205:ARG:HB3	1:C:286:TYR:HB2	2.02	0.41
1:C:307:ARG:O	1:C:320:TYR:HA	2.21	0.41
1:A:222:TYR:HA	1:A:223:ASP:HA	1.72	0.41
1:A:169:SER:HB2	3:A:678:HOH:O	2.19	0.41
1:B:276:PRO:O	1:B:279:ILE:HG12	2.21	0.41
1:C:110:ILE:O	1:C:113:SER:HB3	2.21	0.41
1:C:202:ILE:CD1	1:C:379:MET:SD	3.09	0.41
1:B:199:TYR:HB3	1:B:352:ILE:HD11	2.02	0.41

Continued on next page...

Continued from previous page...

Atom-1	Atom-2	Distance(Å)	Clash(Å)
1:C:235:ARG:HB2	1:C:332:VAL:HB	2.02	0.41
1:B:125:GLU:OE1	1:B:195:ARG:NH2	2.50	0.40

There are no symmetry-related clashes.

5.3 Torsion angles

5.3.1 Protein backbone ⓘ

In the following table, the Percentiles column shows the percent Ramachandran outliers of the chain as a percentile score with respect to all X-ray entries followed by that with respect to entries of similar resolution. The Analysed column shows the number of residues for which the backbone conformation was analysed, and the total number of residues.

Mol	Chain	Analysed	Favoured	Allowed	Outliers	Percentiles	
1	A	373/402 (93%)	364 (98%)	9 (2%)	0	100	100
1	B	373/402 (93%)	365 (98%)	8 (2%)	0	100	100
1	C	377/402 (94%)	367 (97%)	10 (3%)	0	100	100
All	All	1123/1206 (93%)	1096 (98%)	27 (2%)	0	100	100

There are no Ramachandran outliers to report.

5.3.2 Protein sidechains ⓘ

In the following table, the Percentiles column shows the percent sidechain outliers of the chain as a percentile score with respect to all X-ray entries followed by that with respect to entries of similar resolution. The Analysed column shows the number of residues for which the sidechain conformation was analysed, and the total number of residues.

Mol	Chain	Analysed	Rotameric	Outliers	Percentiles	
1	A	322/342 (94%)	318 (99%)	4 (1%)	82	84
1	B	322/342 (94%)	316 (98%)	6 (2%)	69	71
1	C	324/342 (95%)	319 (98%)	5 (2%)	76	79
All	All	968/1026 (94%)	953 (98%)	15 (2%)	76	79

All (15) residues with a non-rotameric sidechain are listed below:

Mol	Chain	Res	Type
1	A	197	TRP
1	A	211	GLN
1	A	278	ASN
1	A	385	ASN
1	B	75	LYS
1	B	125	GLU
1	B	197	TRP
1	B	278	ASN
1	B	316	GLN
1	B	317	ASP
1	C	125	GLU
1	C	197	TRP
1	C	278	ASN
1	C	360	HIS
1	C	362	HIS

Some sidechains can be flipped to improve hydrogen bonding and reduce clashes. All (14) such sidechains are listed below:

Mol	Chain	Res	Type
1	A	114	ASN
1	A	278	ASN
1	A	326	GLN
1	A	385	ASN
1	B	114	ASN
1	B	181	HIS
1	B	278	ASN
1	B	293	ASN
1	B	316	GLN
1	B	326	GLN
1	C	114	ASN
1	C	211	GLN
1	C	278	ASN
1	C	326	GLN

5.3.3 RNA ⓘ

There are no RNA chains in this entry.

5.4 Non-standard residues in protein, DNA, RNA chains ⓘ

There are no non-standard protein/DNA/RNA residues in this entry.

5.5 Carbohydrates ⓘ

There are no carbohydrates in this entry.

5.6 Ligand geometry ⓘ

3 ligands are modelled in this entry.

In the following table, the Counts columns list the number of bonds (or angles) for which Mogul statistics could be retrieved, the number of bonds (or angles) that are observed in the model and the number of bonds (or angles) that are defined in the chemical component dictionary. The Link column lists molecule types, if any, to which the group is linked. The Z score for a bond length (or angle) is the number of standard deviations the observed value is removed from the expected value. A bond length (or angle) with $|Z| > 2$ is considered an outlier worth inspection. RMSZ is the root-mean-square of all Z scores of the bond lengths (or angles).

Mol	Type	Chain	Res	Link	Bond lengths			Bond angles		
					Counts	RMSZ	# $ Z > 2$	Counts	RMSZ	# $ Z > 2$
2	BJC	A	387	-	44,44,44	1.48	7 (15%)	61,61,61	1.71	9 (14%)
2	BJC	B	387	-	44,44,44	1.51	7 (15%)	61,61,61	1.70	8 (13%)
2	BJC	C	387	-	44,44,44	1.49	6 (13%)	61,61,61	1.73	9 (14%)

In the following table, the Chirals column lists the number of chiral outliers, the number of chiral centers analysed, the number of these observed in the model and the number defined in the chemical component dictionary. Similar counts are reported in the Torsion and Rings columns. '-' means no outliers of that kind were identified.

Mol	Type	Chain	Res	Link	Chirals	Torsions	Rings
2	BJC	A	387	-	-	0/36/59/59	0/4/4/4
2	BJC	B	387	-	-	0/36/59/59	0/4/4/4
2	BJC	C	387	-	-	0/36/59/59	0/4/4/4

All (20) bond length outliers are listed below:

Mol	Chain	Res	Type	Atoms	Z	Observed(Å)	Ideal(Å)
2	B	387	BJC	C14-N1	3.52	1.40	1.35
2	A	387	BJC	C14-N1	3.36	1.40	1.35
2	C	387	BJC	C14-N1	3.25	1.40	1.35
2	B	387	BJC	C2-N1	2.62	1.50	1.46
2	C	387	BJC	C55-C54	2.38	1.43	1.39
2	B	387	BJC	C43-C39	2.37	1.56	1.52
2	C	387	BJC	C2-N1	2.36	1.49	1.46
2	A	387	BJC	C2-N1	2.35	1.49	1.46
2	B	387	BJC	C19-C17	2.31	1.57	1.53

Continued on next page...

Continued from previous page...

Mol	Chain	Res	Type	Atoms	Z	Observed(Å)	Ideal(Å)
2	C	387	BJC	C43-C39	2.28	1.56	1.52
2	A	387	BJC	C16-C17	2.21	1.59	1.51
2	B	387	BJC	C52-C54	2.18	1.42	1.38
2	B	387	BJC	C85-C16	2.17	1.58	1.53
2	B	387	BJC	C16-C17	2.15	1.59	1.51
2	A	387	BJC	C52-C54	2.14	1.42	1.38
2	C	387	BJC	C16-C17	2.11	1.58	1.51
2	A	387	BJC	C43-C39	2.09	1.55	1.52
2	A	387	BJC	C19-C17	2.08	1.57	1.53
2	C	387	BJC	C52-C54	2.05	1.42	1.38
2	A	387	BJC	C85-C16	2.01	1.58	1.53

All (26) bond angle outliers are listed below:

Mol	Chain	Res	Type	Atoms	Z	Observed(°)	Ideal(°)
2	B	387	BJC	C5-C2-N1	6.41	118.99	110.05
2	C	387	BJC	C5-C2-N1	6.35	118.91	110.05
2	A	387	BJC	C5-C2-N1	6.04	118.48	110.05
2	C	387	BJC	C2-N1-C16	5.22	122.82	114.16
2	A	387	BJC	C2-N1-C16	5.08	122.58	114.16
2	B	387	BJC	C2-N1-C16	5.01	122.47	114.16
2	A	387	BJC	C89-C16-C85	-4.73	101.65	110.37
2	B	387	BJC	C89-C16-C85	-4.64	101.81	110.37
2	C	387	BJC	C89-C16-C85	-4.51	102.05	110.37
2	B	387	BJC	C11-C14-N1	4.09	124.12	118.30
2	A	387	BJC	C11-C14-N1	4.01	124.01	118.30
2	B	387	BJC	O15-C14-C11	-3.92	112.18	120.80
2	C	387	BJC	C11-C14-N1	3.89	123.84	118.30
2	C	387	BJC	O15-C14-C11	-3.85	112.32	120.80
2	C	387	BJC	C2-N1-C14	-3.77	116.90	123.48
2	A	387	BJC	O15-C14-C11	-3.77	112.50	120.80
2	A	387	BJC	C2-N1-C14	-3.72	117.00	123.48
2	B	387	BJC	C2-N1-C14	-3.45	117.47	123.48
2	C	387	BJC	C74-C71-C37	2.55	118.19	113.46
2	C	387	BJC	C89-C16-N1	2.39	113.29	109.70
2	A	387	BJC	C89-C16-N1	2.38	113.28	109.70
2	A	387	BJC	C74-C71-C37	2.27	117.67	113.46
2	A	387	BJC	C19-C17-C30	2.25	111.38	108.41
2	C	387	BJC	C19-C17-C30	2.15	111.23	108.41
2	B	387	BJC	C71-C37-N35	-2.13	107.72	110.20
2	B	387	BJC	C74-C71-C37	2.10	117.35	113.46

There are no chirality outliers.

There are no torsion outliers.

There are no ring outliers.

5.7 Other polymers ⓘ

There are no such residues in this entry.

5.8 Polymer linkage issues

There are no chain breaks in this entry.

6 Fit of model and data ⓘ

6.1 Protein, DNA and RNA chains ⓘ

In the following table, the column labelled ‘#RSRZ> 2’ contains the number (and percentage) of RSRZ outliers, followed by percent RSRZ outliers for the chain as percentile scores relative to all X-ray entries and entries of similar resolution. The OWAB column contains the minimum, median, 95th percentile and maximum values of the occupancy-weighted average B-factor per residue. The column labelled ‘Q< 0.9’ lists the number of (and percentage) of residues with an average occupancy less than 0.9.

Mol	Chain	Analysed	<RSRZ>	#RSRZ>2		OWAB(Å ²)	Q<0.9
1	A	377/402 (93%)	0.20	24 (6%)	19 18	26, 38, 72, 114	0
1	B	377/402 (93%)	0.41	33 (8%)	10 9	26, 40, 80, 115	0
1	C	381/402 (94%)	0.30	29 (7%)	14 13	27, 39, 76, 114	0
All	All	1135/1206 (94%)	0.30	86 (7%)	14 13	26, 39, 77, 115	0

All (86) RSRZ outliers are listed below:

Mol	Chain	Res	Type	RSRZ
1	B	312	VAL	14.3
1	B	314	THR	12.9
1	A	314	THR	11.0
1	C	312	VAL	10.5
1	A	312	VAL	10.3
1	B	313	ALA	8.9
1	C	314	THR	8.4
1	A	313	ALA	7.8
1	C	310	GLU	7.7
1	C	168	ALA	7.4
1	A	315	SER	6.8
1	B	315	SER	6.8
1	C	259	ASP	5.7
1	A	310	GLU	5.7
1	C	158	GLY	5.5
1	B	310	GLU	5.4
1	C	159	PHE	5.4
1	B	256	LYS	5.3
1	B	259	ASP	5.2
1	C	315	SER	5.1
1	B	317	ASP	4.9
1	C	313	ALA	4.9
1	B	361	VAL	4.8

Continued on next page...

Continued from previous page...

Mol	Chain	Res	Type	RSRZ
1	B	316	GLN	4.8
1	A	311	ASP	4.7
1	B	367	THR	4.6
1	B	274	THR	4.3
1	C	365	PHE	4.3
1	C	361	VAL	4.2
1	C	46(P)	SER	4.2
1	B	364	GLU	4.1
1	B	365	PHE	4.0
1	B	271	GLN	3.9
1	C	364	GLU	3.9
1	B	272	ALA	3.8
1	C	311	ASP	3.8
1	B	157	ALA	3.7
1	C	272	ALA	3.6
1	A	364	GLU	3.6
1	B	260	GLY	3.6
1	B	362	HIS	3.5
1	A	259	ASP	3.5
1	C	316	GLN	3.4
1	A	256	LYS	3.3
1	B	311	ASP	3.3
1	A	316	GLN	3.2
1	C	362	HIS	3.2
1	C	273	GLY	3.1
1	A	39	ALA	3.1
1	A	64	ARG	3.1
1	C	160	PRO	2.8
1	C	266	GLN	2.8
1	A	271	GLN	2.7
1	C	145	HIS	2.7
1	C	256	LYS	2.6
1	B	92	ASN	2.6
1	C	271	GLN	2.6
1	C	99	ILE	2.5
1	B	250	ALA	2.5
1	A	119	LEU	2.5
1	B	119	LEU	2.4
1	A	266	GLN	2.4
1	A	380	GLU	2.4
1	A	362	HIS	2.4
1	B	309	VAL	2.4

Continued on next page...

Continued from previous page...

Mol	Chain	Res	Type	RSRZ
1	A	38	PHE	2.4
1	A	118	ILE	2.3
1	B	111	ASN	2.3
1	B	319	CYS	2.3
1	B	266	GLN	2.3
1	C	64	ARG	2.3
1	C	29	ILE	2.3
1	A	102	ILE	2.2
1	B	278	ASN	2.2
1	A	99	ILE	2.2
1	C	23	PRO	2.2
1	B	64	ARG	2.1
1	A	263	LEU	2.1
1	B	263	LEU	2.1
1	B	265	GLU	2.1
1	B	267	LEU	2.1
1	A	343	VAL	2.1
1	B	253	SER	2.1
1	C	38	PHE	2.1
1	C	40	VAL	2.0
1	A	157	ALA	2.0

6.2 Non-standard residues in protein, DNA, RNA chains ⓘ

There are no non-standard protein/DNA/RNA residues in this entry.

6.3 Carbohydrates ⓘ

There are no carbohydrates in this entry.

6.4 Ligands ⓘ

In the following table, the Atoms column lists the number of modelled atoms in the group and the number defined in the chemical component dictionary. LLDF column lists the quality of electron density of the group with respect to its neighbouring residues in protein, DNA or RNA chains. The B-factors column lists the minimum, median, 95th percentile and maximum values of B factors of atoms in the group. The column labelled 'Q< 0.9' lists the number of atoms with occupancy less than 0.9.

Mol	Type	Chain	Res	Atoms	RSR	LLDF	B-factors(Å ²)	Q<0.9
2	BJC	C	387	41/41	0.10	-	29,31,34,35	0

Continued on next page...

Continued from previous page...

Mol	Type	Chain	Res	Atoms	RSR	LLDF	B-factors(\AA^2)	Q<0.9
2	BJC	B	387	41/41	0.10	-	30,32,35,38	0
2	BJC	A	387	41/41	0.10	-	28,32,35,40	0

6.5 Other polymers ⓘ

There are no such residues in this entry.