



# Full wwPDB X-ray Structure Validation Report

Mar 1, 2014 – 03:57 AM GMT

PDB ID : 3K5H  
Title : Crystal structure of carboxyaminoimidazoleribonucleotide synthase from asperigillus clavatus complexed with ATP  
Authors : Thoden, J.B.; Holden, H.M.; Paritala, H.; Firestine, S.M.  
Deposited on : 2009-10-07  
Resolution : 2.10 Å(reported)

This is a full wwPDB validation report for a publicly released PDB entry.  
We welcome your comments at [validation@mail.wwpdb.org](mailto:validation@mail.wwpdb.org)  
A user guide is available at <http://wwpdb.org/ValidationPDFNotes.html>

---

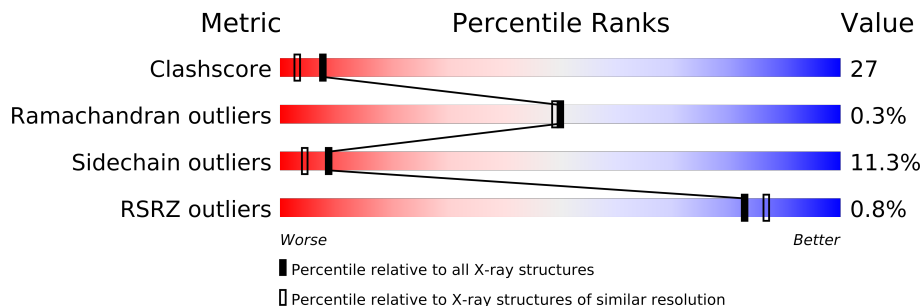
The following versions of software and data (see [references](#)) were used in the production of this report:

MolProbity : 4.02b-467  
Mogul : 1.15 2013  
Xtriage (Phenix) : dev-1323  
EDS : stable22639  
Percentile statistics : 21963  
Refmac : 5.8.0049  
CCP4 : 6.3.0 (Settle)  
Ideal geometry (proteins) : Engh & Huber (2001)  
Ideal geometry (DNA, RNA) : Parkinson et. al. (1996)  
Validation Pipeline (wwPDB-VP) : stable22683

# 1 Overall quality at a glance

The reported resolution of this entry is 2.10 Å.

Percentile scores (ranging between 0-100) for global validation metrics of the entry are shown in the following graphic. The table shows the number of entries on which the scores are based.



Metric	Whole archive (#Entries)	Similar resolution (#Entries, resolution range(Å))
Clashscore	79885	3649 (2.10-2.10)
Ramachandran outliers	78287	3610 (2.10-2.10)
Sidechain outliers	78261	3611 (2.10-2.10)
RSRZ outliers	66119	3013 (2.10-2.10)

The table below summarises the geometric issues observed across the polymeric chains and their fit to the electron density. The red, orange, yellow and green segments on the lower bar indicate the fraction of residues that contain outliers for  $\geq 3$ , 2, 1 and 0 types of geometric quality criteria. The upper red bar (where present) indicates the fraction of residues that have poor fit to the electron density.

Mol	Chain	Length	Quality of chain
1	A	403	
1	B	403	
1	C	403	
1	D	403	

## 2 Entry composition

There are 4 unique types of molecules in this entry. The entry contains 12850 atoms, of which 0 are hydrogen and 0 are deuterium.

In the tables below, the ZeroOcc column contains the number of atoms modelled with zero occupancy, the AltConf column contains the number of residues with at least one atom in alternate conformation and the Trace column contains the number of residues modelled with at most 2 atoms.

- Molecule 1 is a protein called Phosphoribosyl-aminoimidazolecarboxylase.

Mol	Chain	Residues	Atoms					ZeroOcc	AltConf	Trace
1	A	382	Total	C	N	O	S	0	4	0
			2977	1869	525	566	17			
1	B	380	Total	C	N	O	S	0	5	0
			2969	1865	519	570	15			
1	C	382	Total	C	N	O	S	0	2	0
			2975	1868	527	564	16			
1	D	380	Total	C	N	O	S	0	1	0
			2948	1854	518	561	15			

There are 80 discrepancies between the modelled and reference sequences:

Chain	Residue	Modelled	Actual	Comment	Reference
A	-19	MET	-	EXPRESSION TAG	UNP A1CII2
A	-18	GLY	-	EXPRESSION TAG	UNP A1CII2
A	-17	SER	-	EXPRESSION TAG	UNP A1CII2
A	-16	SER	-	EXPRESSION TAG	UNP A1CII2
A	-15	HIS	-	EXPRESSION TAG	UNP A1CII2
A	-14	HIS	-	EXPRESSION TAG	UNP A1CII2
A	-13	HIS	-	EXPRESSION TAG	UNP A1CII2
A	-12	HIS	-	EXPRESSION TAG	UNP A1CII2
A	-11	HIS	-	EXPRESSION TAG	UNP A1CII2
A	-10	HIS	-	EXPRESSION TAG	UNP A1CII2
A	-9	SER	-	EXPRESSION TAG	UNP A1CII2
A	-8	SER	-	EXPRESSION TAG	UNP A1CII2
A	-7	GLU	-	EXPRESSION TAG	UNP A1CII2
A	-6	ASN	-	EXPRESSION TAG	UNP A1CII2
A	-5	LEU	-	EXPRESSION TAG	UNP A1CII2
A	-4	TYR	-	EXPRESSION TAG	UNP A1CII2
A	-3	PHE	-	EXPRESSION TAG	UNP A1CII2
A	-2	GLN	-	EXPRESSION TAG	UNP A1CII2
A	-1	GLY	-	EXPRESSION TAG	UNP A1CII2
A	0	HIS	-	EXPRESSION TAG	UNP A1CII2
B	-19	MET	-	EXPRESSION TAG	UNP A1CII2

*Continued on next page...*

*Continued from previous page...*

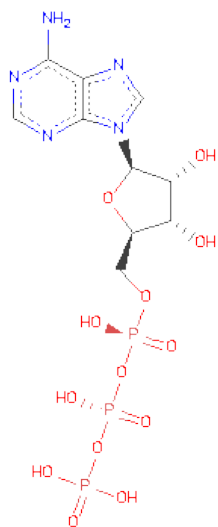
Chain	Residue	Modelled	Actual	Comment	Reference
B	-18	GLY	-	EXPRESSION TAG	UNP A1CII2
B	-17	SER	-	EXPRESSION TAG	UNP A1CII2
B	-16	SER	-	EXPRESSION TAG	UNP A1CII2
B	-15	HIS	-	EXPRESSION TAG	UNP A1CII2
B	-14	HIS	-	EXPRESSION TAG	UNP A1CII2
B	-13	HIS	-	EXPRESSION TAG	UNP A1CII2
B	-12	HIS	-	EXPRESSION TAG	UNP A1CII2
B	-11	HIS	-	EXPRESSION TAG	UNP A1CII2
B	-10	HIS	-	EXPRESSION TAG	UNP A1CII2
B	-9	SER	-	EXPRESSION TAG	UNP A1CII2
B	-8	SER	-	EXPRESSION TAG	UNP A1CII2
B	-7	GLU	-	EXPRESSION TAG	UNP A1CII2
B	-6	ASN	-	EXPRESSION TAG	UNP A1CII2
B	-5	LEU	-	EXPRESSION TAG	UNP A1CII2
B	-4	TYR	-	EXPRESSION TAG	UNP A1CII2
B	-3	PHE	-	EXPRESSION TAG	UNP A1CII2
B	-2	GLN	-	EXPRESSION TAG	UNP A1CII2
B	-1	GLY	-	EXPRESSION TAG	UNP A1CII2
B	0	HIS	-	EXPRESSION TAG	UNP A1CII2
C	-19	MET	-	EXPRESSION TAG	UNP A1CII2
C	-18	GLY	-	EXPRESSION TAG	UNP A1CII2
C	-17	SER	-	EXPRESSION TAG	UNP A1CII2
C	-16	SER	-	EXPRESSION TAG	UNP A1CII2
C	-15	HIS	-	EXPRESSION TAG	UNP A1CII2
C	-14	HIS	-	EXPRESSION TAG	UNP A1CII2
C	-13	HIS	-	EXPRESSION TAG	UNP A1CII2
C	-12	HIS	-	EXPRESSION TAG	UNP A1CII2
C	-11	HIS	-	EXPRESSION TAG	UNP A1CII2
C	-10	HIS	-	EXPRESSION TAG	UNP A1CII2
C	-9	SER	-	EXPRESSION TAG	UNP A1CII2
C	-8	SER	-	EXPRESSION TAG	UNP A1CII2
C	-7	GLU	-	EXPRESSION TAG	UNP A1CII2
C	-6	ASN	-	EXPRESSION TAG	UNP A1CII2
C	-5	LEU	-	EXPRESSION TAG	UNP A1CII2
C	-4	TYR	-	EXPRESSION TAG	UNP A1CII2
C	-3	PHE	-	EXPRESSION TAG	UNP A1CII2
C	-2	GLN	-	EXPRESSION TAG	UNP A1CII2
C	-1	GLY	-	EXPRESSION TAG	UNP A1CII2
C	0	HIS	-	EXPRESSION TAG	UNP A1CII2
D	-19	MET	-	EXPRESSION TAG	UNP A1CII2
D	-18	GLY	-	EXPRESSION TAG	UNP A1CII2
D	-17	SER	-	EXPRESSION TAG	UNP A1CII2

*Continued on next page...*

Continued from previous page...

Chain	Residue	Modelled	Actual	Comment	Reference
D	-16	SER	-	EXPRESSION TAG	UNP A1CII2
D	-15	HIS	-	EXPRESSION TAG	UNP A1CII2
D	-14	HIS	-	EXPRESSION TAG	UNP A1CII2
D	-13	HIS	-	EXPRESSION TAG	UNP A1CII2
D	-12	HIS	-	EXPRESSION TAG	UNP A1CII2
D	-11	HIS	-	EXPRESSION TAG	UNP A1CII2
D	-10	HIS	-	EXPRESSION TAG	UNP A1CII2
D	-9	SER	-	EXPRESSION TAG	UNP A1CII2
D	-8	SER	-	EXPRESSION TAG	UNP A1CII2
D	-7	GLU	-	EXPRESSION TAG	UNP A1CII2
D	-6	ASN	-	EXPRESSION TAG	UNP A1CII2
D	-5	LEU	-	EXPRESSION TAG	UNP A1CII2
D	-4	TYR	-	EXPRESSION TAG	UNP A1CII2
D	-3	PHE	-	EXPRESSION TAG	UNP A1CII2
D	-2	GLN	-	EXPRESSION TAG	UNP A1CII2
D	-1	GLY	-	EXPRESSION TAG	UNP A1CII2
D	0	HIS	-	EXPRESSION TAG	UNP A1CII2

- Molecule 2 is ADENOSINE-5'-TRIPHOSPHATE (three-letter code: ATP) (formula:  $C_{10}H_{16}N_5O_{13}P_3$ ).



Mol	Chain	Residues	Atoms					ZeroOcc	AltConf
2	A	1	Total	C	N	O	P	0	0
			31	10	5	13	3		
2	B	1	Total	C	N	O	P	0	0
			31	10	5	13	3		

Continued on next page...

*Continued from previous page...*

Mol	Chain	Residues	Atoms					ZeroOcc	AltConf
2	C	1	Total	C	N	O	P	0	0
			31	10	5	13	3		
2	D	1	Total	C	N	O	P	0	0
			31	10	5	13	3		

- Molecule 3 is MAGNESIUM ION (three-letter code: MG) (formula: Mg).

Mol	Chain	Residues	Atoms		ZeroOcc	AltConf
3	B	2	Total	Mg	0	0
			2	2		
3	A	2	Total	Mg	0	0
			2	2		
3	D	2	Total	Mg	0	0
			2	2		
3	C	2	Total	Mg	0	0
			2	2		

- Molecule 4 is water.

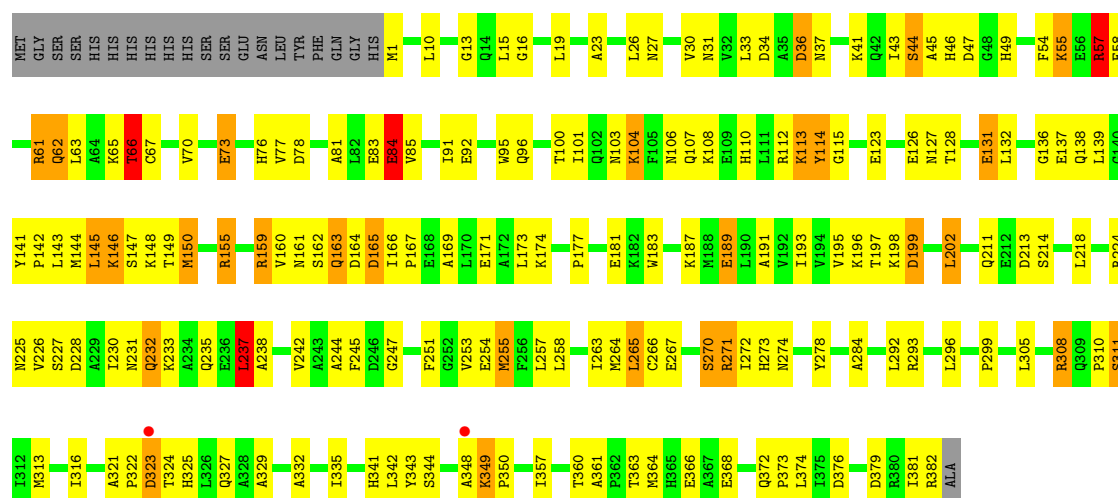
Mol	Chain	Residues	Atoms		ZeroOcc	AltConf
4	A	227	Total	O	0	0
			227	227		
4	B	247	Total	O	0	0
			247	247		
4	C	179	Total	O	0	0
			179	179		
4	D	196	Total	O	0	0
			196	196		

### 3 Residue-property plots

These plots are drawn for all protein, RNA and DNA chains in the entry. The first graphic for a chain summarises the proportions of errors displayed in the second graphic. The second graphic shows the sequence view annotated by issues in geometry and electron density. Residues are color-coded according to the number of geometric quality criteria for which they contain at least one outlier: green = 0, yellow = 1, orange = 2 and red = 3 or more. A red dot above a residue indicates a poor fit to the electron density ( $RSRZ > 2$ ). Stretches of 2 or more consecutive residues without any outlier are shown as a green connector. Residues present in the sample, but not in the model, are shown in grey.

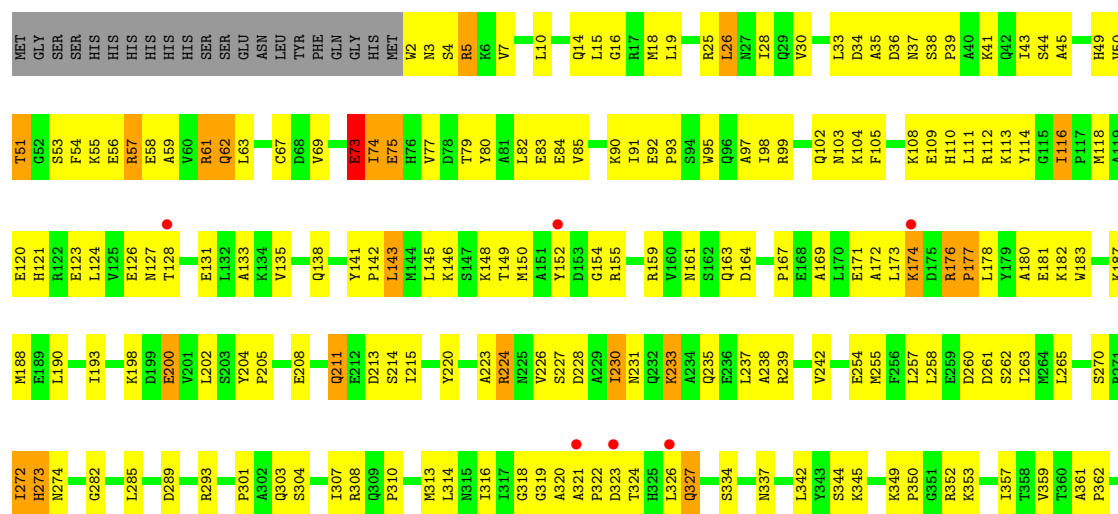
#### • Molecule 1: Phosphoribosyl-aminoimidazolecarboxylase

Chain A:



#### • Molecule 1: Phosphoribosyl-aminoimidazolecarboxylase

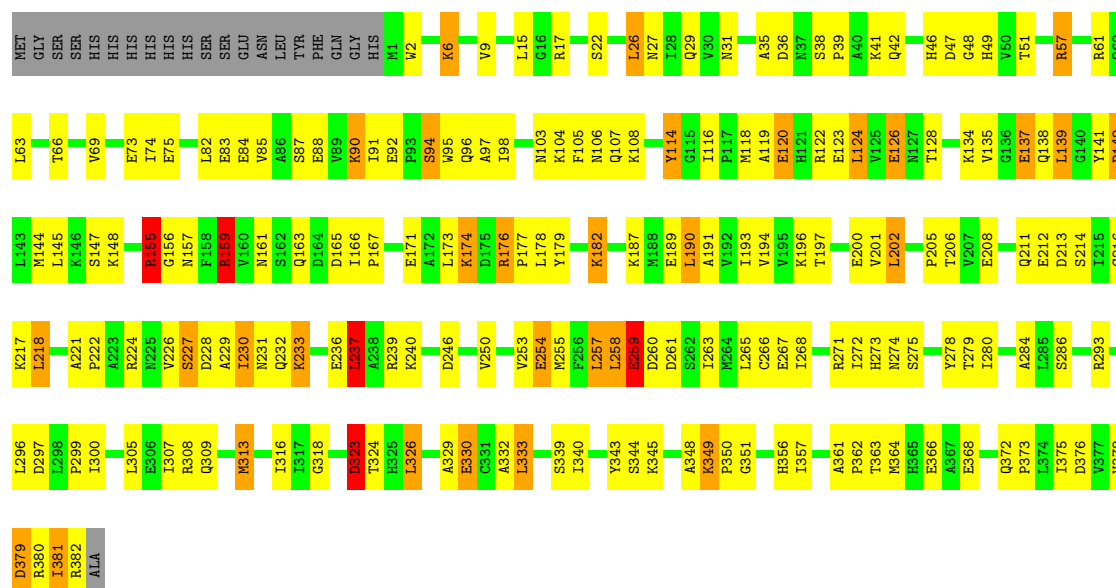
Chain B:





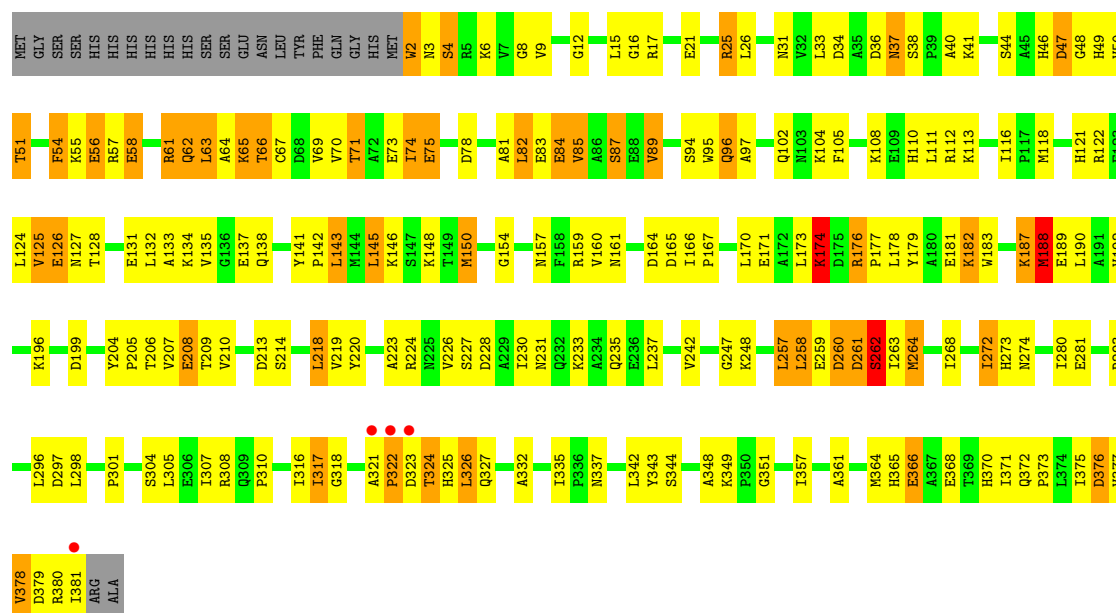
• Molecule 1: Phosphoribosyl-aminoimidazolecarboxylase

Chain C:



• Molecule 1: Phosphoribosyl-aminoimidazolecarboxylase

Chain D:





## 4 Data and refinement statistics

Property	Value	Source
Space group	P 1 21 1	Depositor
Cell constants a, b, c, $\alpha$ , $\beta$ , $\gamma$	75.90Å 134.40Å 99.60Å 90.00° 107.00° 90.00°	Depositor
Resolution (Å)	30.00 – 2.10 40.62 – 2.10	Depositor EDS
% Data completeness (in resolution range)	93.6 (30.00-2.10) 93.5 (40.62-2.10)	Depositor EDS
$R_{merge}$	0.09	Depositor
$R_{sym}$	0.09	Depositor
$\langle I/\sigma(I) \rangle$ <sup>1</sup>	0.63 (at 2.10Å)	Xtriage
Refinement program	TNT	Depositor
R, $R_{free}$	0.196 , 0.261 0.195 , (Not available)	Depositor DCC
$R_{free}$ test set	No test flags present.	DCC
Wilson B-factor (Å <sup>2</sup> )	15.5	Xtriage
Anisotropy	0.179	Xtriage
Bulk solvent $k_{sol}$ (e/Å <sup>3</sup> ), $B_{sol}$ (Å <sup>2</sup> )	0.37 , 82.5	EDS
Estimated twinning fraction	No twinning to report.	Xtriage
L-test for twinning	$\langle  L  \rangle = 0.51$ , $\langle L^2 \rangle = 0.34$	Xtriage
Outliers	0 of 104381 reflections	Xtriage
$F_o, F_c$ correlation	0.93	EDS
Total number of atoms	12850	wwPDB-VP
Average B, all atoms (Å <sup>2</sup> )	32.0	wwPDB-VP

Xtriage's analysis on translational NCS is as follows: *The largest off-origin peak in the Patterson function is 7.48% of the height of the origin peak. No significant pseudotranslation is detected.*

<sup>1</sup>Intensities estimated from amplitudes.

## 5 Model quality i

### 5.1 Standard geometry i

Bond lengths and bond angles in the following residue types are not validated in this section: MG, ATP

The Z score for a bond length (or angle) is the number of standard deviations the observed value is removed from the expected value. A bond length (or angle) with  $|Z| > 5$  is considered an outlier worth inspection. RMSZ is the root-mean-square of all Z scores of the bond lengths (or angles).

Mol	Chain	Bond lengths		Bond angles	
		RMSZ	$\# Z  > 5$	RMSZ	$\# Z  > 5$
1	A	0.79	1/3046 (0.0%)	1.49	29/4124 (0.7%)
1	B	0.79	1/3042 (0.0%)	1.53	31/4120 (0.8%)
1	C	0.77	1/3036 (0.0%)	1.46	20/4110 (0.5%)
1	D	0.73	1/3005 (0.0%)	1.55	42/4071 (1.0%)
All	All	0.77	4/12129 (0.0%)	1.51	122/16425 (0.7%)

Chiral center outliers are detected by calculating the chiral volume of a chiral center and verifying if the center is modelled as a planar moiety or with the opposite hand. A planarity outlier is detected by checking planarity of atoms in a peptide group, atoms in a mainchain group or atoms of a sidechain that are expected to be planar.

Mol	Chain	#Chirality outliers	#Planarity outliers
1	A	0	1
1	C	0	1
1	D	1	0
All	All	1	2

All (4) bond length outliers are listed below:

Mol	Chain	Res	Type	Atoms	Z	Observed(Å)	Ideal(Å)
1	B	67	CYS	CB-SG	-6.34	1.71	1.82
1	A	189	GLU	CD-OE1	-5.96	1.19	1.25
1	C	137	GLU	CB-CG	-5.77	1.41	1.52
1	D	188	MET	SD-CE	-5.67	1.46	1.77

All (122) bond angle outliers are listed below:

Mol	Chain	Res	Type	Atoms	Z	Observed(°)	Ideal(°)
1	D	143	LEU	CB-CG-CD1	-11.52	91.42	111.00
1	C	144	MET	CG-SD-CE	-10.85	82.85	100.20

*Continued on next page...*

*Continued from previous page...*

Mol	Chain	Res	Type	Atoms	Z	Observed(°)	Ideal(°)
1	A	57	ARG	NE-CZ-NH2	-10.76	114.92	120.30
1	A	127	ASN	N-CA-CB	-10.72	91.30	110.60
1	A	376	ASP	CB-CG-OD1	-9.95	109.34	118.30
1	B	289	ASP	CB-CG-OD2	9.28	126.66	118.30
1	B	257	LEU	CB-CG-CD1	9.11	126.48	111.00
1	A	376	ASP	CB-CG-OD2	8.89	126.30	118.30
1	C	323	ASP	CB-CA-C	-8.18	94.03	110.40
1	C	381	ILE	CB-CA-C	-8.16	95.27	111.60
1	B	224	ARG	NE-CZ-NH2	-8.01	116.30	120.30
1	A	57	ARG	NE-CZ-NH1	7.99	124.30	120.30
1	A	36	ASP	CB-CG-OD1	-7.53	111.52	118.30
1	B	224	ARG	NE-CZ-NH1	7.49	124.04	120.30
1	B	239	ARG	NE-CZ-NH2	-7.45	116.57	120.30
1	D	228	ASP	CB-CG-OD1	7.41	124.97	118.30
1	D	376	ASP	CB-CG-OD1	-7.33	111.70	118.30
1	D	261	ASP	CB-CG-OD2	7.25	124.82	118.30
1	D	273	HIS	N-CA-CB	-7.24	97.58	110.60
1	B	273	HIS	N-CA-CB	-7.22	97.60	110.60
1	D	305	LEU	CB-CG-CD1	-7.22	98.72	111.00
1	A	374	LEU	CB-CG-CD1	7.21	123.25	111.00
1	C	349	LYS	N-CA-C	-7.16	91.68	111.00
1	B	376	ASP	CB-CG-OD1	-7.12	111.89	118.30
1	D	308	ARG	NE-CZ-NH2	-7.11	116.74	120.30
1	C	379	ASP	CB-CG-OD1	-7.03	111.97	118.30
1	B	202	LEU	CB-CG-CD2	-6.95	99.19	111.00
1	C	155	ARG	NE-CZ-NH2	-6.93	116.84	120.30
1	A	84	GLU	OE1-CD-OE2	-6.88	115.05	123.30
1	B	5	ARG	NE-CZ-NH1	-6.87	116.86	120.30
1	A	66	THR	N-CA-CB	-6.84	97.30	110.30
1	B	374	LEU	CB-CG-CD1	-6.83	99.39	111.00
1	D	67	CYS	CA-CB-SG	-6.83	101.71	114.00
1	D	85	VAL	CB-CA-C	-6.82	98.44	111.40
1	A	379	ASP	CB-CG-OD1	-6.77	112.21	118.30
1	C	124	LEU	CB-CG-CD2	-6.76	99.50	111.00
1	C	94	SER	CB-CA-C	-6.70	97.37	110.10
1	C	271	ARG	NE-CZ-NH2	6.64	123.62	120.30
1	A	278	TYR	CB-CG-CD1	-6.53	117.08	121.00
1	D	224	ARG	NE-CZ-NH2	-6.48	117.06	120.30
1	D	25	ARG	NE-CZ-NH1	6.45	123.52	120.30
1	D	317	ILE	CB-CA-C	-6.42	98.77	111.60
1	D	69	VAL	CB-CA-C	-6.41	99.22	111.40
1	B	159	ARG	NE-CZ-NH2	6.34	123.47	120.30

*Continued on next page...*

*Continued from previous page...*

Mol	Chain	Res	Type	Atoms	Z	Observed(°)	Ideal(°)
1	B	257	LEU	CA-CB-CG	-6.33	100.74	115.30
1	B	164	ASP	CB-CG-OD2	-6.31	112.62	118.30
1	D	143	LEU	CB-CA-C	-6.29	98.24	110.20
1	B	69	VAL	CB-CA-C	-6.26	99.51	111.40
1	C	190	LEU	CB-CG-CD2	-6.25	100.38	111.00
1	C	176	ARG	NE-CZ-NH1	-6.20	117.20	120.30
1	B	143	LEU	CA-CB-CG	6.19	129.53	115.30
1	C	333	LEU	CB-CG-CD1	-6.07	100.67	111.00
1	D	376	ASP	CB-CG-OD2	6.04	123.74	118.30
1	B	319	GLY	N-CA-C	-6.03	98.01	113.10
1	A	237	LEU	CB-CG-CD2	6.03	121.25	111.00
1	D	89	VAL	CG1-CB-CG2	5.95	120.43	110.90
1	D	260	ASP	CB-CG-OD1	-5.95	112.94	118.30
1	A	323	ASP	CB-CA-C	-5.92	98.55	110.40
1	A	273	HIS	N-CA-CB	-5.90	99.97	110.60
1	B	51	THR	CB-CA-C	-5.90	95.68	111.60
1	B	99	ARG	NE-CZ-NH2	-5.86	117.37	120.30
1	B	99	ARG	NE-CZ-NH1	5.85	123.23	120.30
1	A	255	MET	CA-CB-CG	-5.83	103.39	113.30
1	D	143	LEU	CB-CG-CD2	-5.82	101.10	111.00
1	D	261	ASP	CB-CG-OD1	-5.81	113.07	118.30
1	A	78	ASP	CB-CG-OD2	-5.80	113.08	118.30
1	A	335	ILE	CG1-CB-CG2	5.79	124.15	111.40
1	A	36	ASP	CB-CG-OD2	5.79	123.51	118.30
1	A	197	THR	CA-CB-CG2	-5.79	104.30	112.40
1	D	257	LEU	CB-CG-CD1	5.78	120.82	111.00
1	D	199	ASP	CB-CG-OD2	-5.76	113.11	118.30
1	A	155	ARG	NE-CZ-NH2	-5.72	117.44	120.30
1	A	308	ARG	NE-CZ-NH1	-5.72	117.44	120.30
1	C	254	GLU	OE1-CD-OE2	-5.72	116.43	123.30
1	D	21	GLU	OE1-CD-OE2	-5.67	116.50	123.30
1	D	371	ILE	N-CA-C	5.64	126.22	111.00
1	D	262	SER	N-CA-C	-5.62	95.83	111.00
1	B	116	ILE	CG1-CB-CG2	5.59	123.69	111.40
1	A	278	TYR	CB-CG-CD2	5.58	124.35	121.00
1	B	220	TYR	CB-CG-CD2	-5.58	117.65	121.00
1	D	308	ARG	NE-CZ-NH1	5.57	123.09	120.30
1	D	145	LEU	CB-CG-CD1	5.56	120.46	111.00
1	D	174	LYS	CB-CA-C	-5.56	99.28	110.40
1	B	120	GLU	N-CA-CB	-5.55	100.61	110.60
1	B	349	LYS	N-CA-C	-5.53	96.07	111.00
1	B	18	MET	CA-CB-CG	-5.53	103.90	113.30

*Continued on next page...*

*Continued from previous page...*

Mol	Chain	Res	Type	Atoms	Z	Observed(°)	Ideal(°)
1	B	200	GLU	CB-CA-C	-5.53	99.34	110.40
1	B	143	LEU	CB-CA-C	-5.52	99.71	110.20
1	D	281	GLU	OE1-CD-OE2	-5.52	116.68	123.30
1	D	82	LEU	CB-CG-CD2	-5.51	101.63	111.00
1	D	165	ASP	N-CA-C	-5.48	96.22	111.00
1	B	345	LYS	CD-CE-NZ	-5.47	99.12	111.70
1	D	51	THR	CB-CA-C	-5.47	96.83	111.60
1	C	9	VAL	CA-CB-CG2	-5.40	102.80	110.90
1	D	164	ASP	CB-CG-OD2	-5.38	113.45	118.30
1	A	349	LYS	N-CA-C	-5.38	96.47	111.00
1	C	237	LEU	CB-CG-CD2	5.37	120.13	111.00
1	D	218	LEU	CB-CA-C	-5.36	100.02	110.20
1	A	195	VAL	CB-CA-C	-5.32	101.30	111.40
1	B	177	PRO	N-CA-C	-5.30	98.31	112.10
1	A	165	ASP	CB-CG-OD2	-5.26	113.57	118.30
1	B	61	ARG	NE-CZ-NH2	5.25	122.93	120.30
1	A	146	LYS	CD-CE-NZ	5.25	123.77	111.70
1	C	165	ASP	CB-CA-C	-5.22	99.96	110.40
1	D	322	PRO	N-CA-C	5.22	125.66	112.10
1	C	159	ARG	NE-CZ-NH1	-5.21	117.69	120.30
1	A	181	GLU	CB-CA-C	-5.21	99.97	110.40
1	B	73	GLU	CA-CB-CG	5.18	124.79	113.40
1	D	44	SER	N-CA-CB	-5.17	102.75	110.50
1	C	116	ILE	CG1-CB-CG2	5.15	122.73	111.40
1	D	179	TYR	N-CA-C	-5.13	97.16	111.00
1	D	208	GLU	N-CA-CB	-5.13	101.37	110.60
1	C	230	ILE	CG1-CB-CG2	-5.12	100.14	111.40
1	C	200	GLU	CB-CA-C	-5.11	100.19	110.40
1	D	258	LEU	CA-CB-CG	-5.09	103.59	115.30
1	A	202	LEU	CB-CG-CD2	-5.09	102.35	111.00
1	D	2	TRP	N-CA-CB	5.08	119.74	110.60
1	D	280	ILE	CA-CB-CG1	5.05	120.61	111.00
1	B	176	ARG	NE-CZ-NH2	-5.05	117.77	120.30
1	D	228	ASP	CB-CG-OD2	-5.04	113.76	118.30
1	A	343	TYR	N-CA-C	5.03	124.58	111.00
1	D	26	LEU	CB-CG-CD1	-5.01	102.49	111.00

All (1) chirality outliers are listed below:

Mol	Chain	Res	Type	Atom
1	D	280	ILE	CB

All (2) planarity outliers are listed below:

Mol	Chain	Res	Type	Group
1	A	114	TYR	Sidechain
1	C	114	TYR	Sidechain

## 5.2 Close contacts ⓘ

In the following table, the Non-H and H(model) columns list the number of non-hydrogen atoms and hydrogen atoms in the chain respectively. The H(added) column lists the number of hydrogens added by MolProbity. The Clashes column lists the number of clashes within the asymmetric unit, and the number in parentheses is this value normalized per 1000 atoms of the molecule in the chain. The Symm-Clashes column gives symmetry related clashes, in the same way as for the Clashes column.

Mol	Chain	Non-H	H(model)	H(added)	Clashes	Symm-Clashes
1	A	2977	0	2988	135	0
1	B	2969	0	2965	161	0
1	C	2975	0	2991	162	0
1	D	2948	0	2960	205	0
2	A	31	0	12	1	0
2	B	31	0	12	2	0
2	C	31	0	12	1	0
2	D	31	0	12	2	0
3	A	2	0	0	0	0
3	B	2	0	0	0	0
3	C	2	0	0	0	0
3	D	2	0	0	0	0
4	A	227	0	0	3	0
4	B	247	0	0	11	0
4	C	179	0	0	9	0
4	D	196	0	0	12	0
All	All	12850	0	11952	659	0

Clashscore is defined as the number of clashes calculated for the entry per 1000 atoms (including hydrogens) of the entry. The overall clashscore for this entry is 27.

All (659) close contacts within the same asymmetric unit are listed below.

Atom-1	Atom-2	Distance(Å)	Clash(Å)
1:A:145:LEU:HD13	1:A:173:LEU:HD12	1.25	1.15
1:B:174:LYS:HD2	1:B:174:LYS:H	1.11	1.07
1:C:41:LYS:HE2	1:C:49:HIS:HB3	1.36	1.05
1:D:132:LEU:HD23	1:D:166:ILE:HG23	1.40	1.03
1:D:135:VAL:HA	1:D:138:GLN:HE21	1.19	1.02

*Continued on next page...*

*Continued from previous page...*

Atom-1	Atom-2	Distance(Å)	Clash(Å)
1:D:135:VAL:HA	1:D:138:GLN:NE2	1.78	0.98
1:C:206:THR:HB	1:C:231[A]:ASN:ND2	1.78	0.97
1:C:61[B]:ARG:HH11	1:C:61[B]:ARG:HG3	1.28	0.96
1:B:316:ILE:HD11	1:B:357:ILE:HD11	1.47	0.96
1:D:110:HIS:HA	1:D:113:LYS:HE3	1.48	0.96
1:C:155:ARG:HH11	1:C:155:ARG:HG2	1.26	0.95
1:C:145:LEU:HD23	1:C:173:LEU:HD12	1.48	0.94
1:B:33:LEU:HD13	1:B:50:VAL:HG12	1.50	0.94
1:A:41:LYS:HE2	1:A:49:HIS:HB3	1.49	0.93
1:D:205:PRO:HG2	1:D:307:ILE:HD12	1.50	0.91
1:C:217:LYS:HG2	1:C:218:LEU:HD12	1.55	0.89
1:A:145:LEU:CD1	1:A:173:LEU:HD12	2.03	0.88
1:A:16:GLY:N	1:A:73:GLU:HG3	1.88	0.88
1:B:57:ARG:O	1:B:61:ARG:HG3	1.72	0.87
1:C:15:LEU:HB3	1:C:272:ILE:CD1	2.04	0.87
1:C:201:VAL:C	1:C:202:LEU:HD23	1.95	0.86
1:C:233:LYS:HB3	1:C:263:ILE:HD12	1.58	0.84
1:B:59:ALA:HA	1:B:62[B]:GLN:HG3	1.58	0.84
1:D:54:PHE:H	1:D:54:PHE:HD1	1.24	0.84
1:A:66:THR:HG22	1:A:67[B]:CYS:SG	2.18	0.82
1:B:174:LYS:CD	1:B:174:LYS:H	1.92	0.82
1:B:174:LYS:N	1:B:174:LYS:HD2	1.92	0.81
1:D:16:GLY:N	1:D:73:GLU:HG3	1.95	0.81
1:A:63:LEU:O	1:A:66:THR:HB	1.80	0.80
1:D:142:PRO:HB3	1:D:161:ASN:HA	1.64	0.80
1:A:321:ALA:HB3	1:A:324:THR:CG2	2.12	0.80
1:D:112:ARG:HG3	1:D:118:MET:CE	2.12	0.80
1:B:108:LYS:O	1:B:118:MET:HE1	1.82	0.80
1:C:6:LYS:HE2	1:C:29:GLN:CD	2.02	0.79
1:B:188:MET:HE1	1:B:226:VAL:HG21	1.63	0.79
1:B:112:ARG:HG2	1:B:118:MET:HE3	1.65	0.78
1:A:166:ILE:HB	1:A:167:PRO:HD3	1.64	0.78
1:D:365:HIS:HA	4:D:474:HOH:O	1.82	0.78
1:C:63:LEU:O	1:C:66:THR:HB	1.84	0.78
1:C:145:LEU:CD2	1:C:173:LEU:HD12	2.13	0.77
1:B:16:GLY:N	1:B:73:GLU:HG3	1.99	0.77
1:D:112:ARG:HG3	1:D:118:MET:HE3	1.66	0.77
1:B:2:TRP:HZ3	1:B:26:LEU:HD13	1.49	0.77
1:B:205:PRO:HG2	1:B:307:ILE:HG13	1.66	0.77
1:D:127:ASN:HD21	1:D:178:LEU:HD12	1.50	0.77
1:D:83:GLU:HG3	1:D:95:TRP:CZ2	2.20	0.76
1:C:15:LEU:HB3	1:C:272:ILE:HD12	1.67	0.76

*Continued on next page...*

*Continued from previous page...*

Atom-1	Atom-2	Distance(Å)	Clash(Å)
1:B:233:LYS:HE2	1:B:233:LYS:HA	1.66	0.75
1:D:132:LEU:HB3	1:D:166:ILE:HD13	1.69	0.75
1:A:238:ALA:O	1:A:242:VAL:HG23	1.85	0.75
1:C:363:THR:OG1	1:C:366:GLU:HB2	1.87	0.75
1:C:120:GLU:H	1:C:182:LYS:HD3	1.50	0.75
1:B:372:GLN:HB3	1:B:373:PRO:HD3	1.67	0.74
1:C:211:GLN:OE1	1:C:216:CYS:HA	1.86	0.74
1:A:166:ILE:O	1:A:169:ALA:HB3	1.88	0.74
1:B:188:MET:CE	1:B:226:VAL:HG21	2.17	0.74
1:B:36:ASP:O	1:B:37:ASN:HB3	1.87	0.74
1:B:188:MET:CE	1:B:190:LEU:HD21	2.17	0.74
1:C:6:LYS:HE2	1:C:29:GLN:NE2	2.03	0.73
1:A:311:SER:HB3	1:A:360:THR:HG22	1.69	0.73
1:C:126:GLU:HB3	1:C:128:THR:HG23	1.70	0.73
1:B:188:MET:HE2	1:B:190:LEU:HD21	1.70	0.73
1:C:94:SER:O	1:C:98:ILE:HG13	1.88	0.73
1:D:111:LEU:HD11	1:D:268:ILE:HD12	1.70	0.73
1:B:316:ILE:HD11	1:B:357:ILE:CD1	2.17	0.73
1:D:171:GLU:O	1:D:174:LYS:HG3	1.88	0.73
1:C:15:LEU:HB3	1:C:272:ILE:HD11	1.71	0.72
1:A:162:SER:O	1:A:165:ASP:HB2	1.89	0.72
1:D:176:ARG:HB2	4:D:464:HOH:O	1.89	0.72
1:A:322:PRO:HA	1:A:348:ALA:HB3	1.72	0.72
1:C:147:SER:HA	1:C:178:LEU:HD23	1.70	0.72
1:D:373:PRO:O	1:D:377:VAL:HG23	1.90	0.72
1:D:209:THR:HG22	1:D:219:VAL:HG22	1.70	0.72
1:B:282:GLY:O	1:B:308:ARG:HG3	1.91	0.71
1:D:36:ASP:O	1:D:37:ASN:ND2	2.23	0.71
1:A:324:THR:O	1:A:327:GLN:HB2	1.90	0.71
1:C:326:LEU:N	1:C:326:LEU:HD23	2.06	0.70
1:C:61[B]:ARG:HH11	1:C:61[B]:ARG:CG	2.01	0.70
1:D:62:GLN:HA	1:D:62:GLN:HE21	1.56	0.70
1:B:359:VAL:CG2	1:B:371:ILE:HD12	2.21	0.70
1:B:2:TRP:CZ3	1:B:26:LEU:HD13	2.27	0.70
1:C:36:ASP:OD1	1:C:51:THR:HG23	1.92	0.69
1:D:15:LEU:HB2	1:D:73:GLU:HG2	1.74	0.69
1:B:112:ARG:HG2	1:B:118:MET:CE	2.21	0.69
1:D:33:LEU:HB2	1:D:63:LEU:HG	1.73	0.69
1:C:318:GLY:HA3	1:C:349:LYS:O	1.92	0.69
1:D:62:GLN:HA	1:D:62:GLN:NE2	2.08	0.69
1:B:34:ASP:OD1	1:B:35:ALA:N	2.24	0.68
1:B:80:TYR:O	1:B:84:GLU:HG3	1.93	0.68

*Continued on next page...*



*Continued from previous page...*

Atom-1	Atom-2	Distance(Å)	Clash(Å)
1:A:159:ARG:HD3	1:A:161:ASN:OD1	1.94	0.68
1:B:148:LYS:HD2	1:B:177:PRO:HB2	1.76	0.68
1:B:146:LYS:HE3	1:B:181:GLU:OE1	1.92	0.68
1:B:75:GLU:HB3	1:B:270:SER:OG	1.93	0.68
1:B:33:LEU:HB2	1:B:63:LEU:HD22	1.75	0.68
1:D:54:PHE:N	1:D:54:PHE:CD1	2.51	0.68
1:D:141:TYR:HB3	1:D:142:PRO:HA	1.75	0.68
1:A:361:ALA:HB1	1:A:366:GLU:HG2	1.75	0.67
1:C:372:GLN:HB3	1:C:373:PRO:HD3	1.75	0.67
1:C:134:LYS:O	1:C:137:GLU:HB3	1.94	0.67
1:B:204:TYR:HB3	1:B:205:PRO:HD2	1.76	0.67
1:D:141:TYR:CB	1:D:142:PRO:HA	2.25	0.66
1:D:15:LEU:HB2	1:D:73:GLU:CG	2.25	0.66
1:D:126:GLU:HB3	1:D:128:THR:HG23	1.76	0.66
1:C:95:TRP:CZ3	1:C:96:GLN:HG3	2.31	0.66
1:B:83:GLU:HG3	1:B:95:TRP:CZ2	2.30	0.66
1:D:83:GLU:HG3	1:D:95:TRP:CE2	2.32	0.65
1:A:187:LYS:HE2	1:A:258:LEU:O	1.95	0.65
1:D:208:GLU:HB3	1:D:220:TYR:HB2	1.76	0.65
1:C:212:GLU:OE2	1:C:382:ARG:NH2	2.23	0.65
1:D:54:PHE:CE2	1:D:74:ILE:HD13	2.30	0.65
1:C:96:GLN:HB2	4:C:832:HOH:O	1.95	0.65
1:A:372:GLN:HB3	1:A:373:PRO:HD3	1.79	0.65
1:D:56:GLU:HG3	1:D:58:GLU:OE2	1.96	0.65
1:C:231[A]:ASN:ND2	4:C:481:HOH:O	2.30	0.65
1:B:57:ARG:HG3	1:B:58:GLU:N	2.11	0.65
1:A:143:LEU:CD1	1:A:160:VAL:HB	2.27	0.65
1:D:2:TRP:C	1:D:4:SER:H	2.00	0.65
1:B:33:LEU:HD13	1:B:50:VAL:CG1	2.26	0.64
1:A:44:SER:HB3	1:A:49:HIS:HE2	1.61	0.64
1:C:258:LEU:O	1:C:260:ASP:N	2.29	0.64
1:A:95:TRP:CZ3	1:A:96[B]:GLN:HG3	2.32	0.64
1:B:16:GLY:O	1:B:19:LEU:HB3	1.98	0.64
1:A:15:LEU:HB2	1:A:73:GLU:HG2	1.80	0.64
1:D:310:PRO:HD2	1:D:361:ALA:O	1.98	0.64
1:C:258:LEU:O	1:C:261:ASP:N	2.26	0.64
1:C:31:ASN:HD22	1:C:66:THR:HG22	1.63	0.64
1:A:226:VAL:HG13	1:A:230:ILE:HB	1.79	0.64
1:D:108:LYS:O	1:D:118:MET:HE3	1.99	0.63
1:D:78:ASP:OD1	1:D:81:ALA:N	2.28	0.63
1:A:110:HIS:O	1:A:113:LYS:HD3	1.97	0.63
1:B:15:LEU:HB2	1:B:73:GLU:HG2	1.79	0.63

*Continued on next page...*

*Continued from previous page...*

Atom-1	Atom-2	Distance(Å)	Clash(Å)
1:C:318:GLY:O	1:C:350:PRO:HA	1.98	0.63
1:C:376:ASP:O	1:C:380:ARG:HG3	1.99	0.63
1:D:188:MET:HE3	1:D:190:LEU:HD21	1.80	0.63
1:C:379:ASP:O	1:C:382:ARG:HG2	1.98	0.63
1:A:323:ASP:OD1	1:A:324:THR:N	2.31	0.63
1:D:323:ASP:O	1:D:324:THR:C	2.36	0.63
1:D:141:TYR:HA	1:D:142:PRO:C	2.19	0.63
1:A:166:ILE:CB	1:A:167:PRO:HD3	2.28	0.63
1:D:323:ASP:O	1:D:326:LEU:N	2.31	0.63
1:D:33:LEU:HD13	1:D:50:VAL:HG12	1.81	0.62
1:D:188:MET:HE3	1:D:190:LEU:CD2	2.29	0.62
1:C:187:LYS:NZ	1:C:261:ASP:OD1	2.31	0.62
1:A:265:LEU:HG	1:A:266:CYS:N	2.13	0.62
1:B:204:TYR:HB3	1:B:205:PRO:CD	2.30	0.62
1:D:372:GLN:N	1:D:373:PRO:HD2	2.14	0.62
1:C:94:SER:OG	1:C:246:ASP:HB2	1.98	0.62
1:C:364:MET:O	1:C:368:GLU:HG3	1.99	0.62
1:A:61:ARG:HH22	1:A:84:GLU:HG2	1.62	0.62
1:B:227:SER:OG	1:B:230:ILE:HD12	2.00	0.62
1:C:119:ALA:HA	1:C:182:LYS:HE3	1.81	0.62
1:D:105:PHE:HB2	1:D:148:LYS:HG2	1.80	0.62
1:B:74:ILE:HD12	1:B:77:VAL:HG13	1.82	0.62
1:D:126:GLU:HB2	1:D:131:GLU:CD	2.20	0.62
1:C:85:VAL:O	1:C:85:VAL:HG22	1.99	0.61
1:B:353:LYS:HE3	4:B:431:HOH:O	2.00	0.61
1:B:53:SER:HB3	1:B:56:GLU:HG3	1.81	0.61
1:C:293:ARG:HD3	1:C:299:PRO:O	1.99	0.61
1:C:309:GLN:HB3	1:C:361:ALA:O	2.00	0.61
1:A:381:ILE:O	1:A:382:ARG:C	2.37	0.61
1:C:27:ASN:HB3	4:C:790:HOH:O	2.00	0.61
1:A:13:GLY:N	1:A:73:GLU:OE2	2.34	0.60
1:D:227:SER:HB2	4:D:468:HOH:O	2.00	0.60
1:B:38:SER:OG	1:B:41:LYS:HG3	2.00	0.60
1:C:230:ILE:HG21	1:C:257:LEU:HD11	1.83	0.60
1:D:205:PRO:CG	1:D:307:ILE:HD12	2.27	0.60
1:C:217:LYS:HG2	1:C:218:LEU:CD1	2.30	0.60
1:D:372:GLN:HB3	1:D:373:PRO:HD3	1.83	0.60
1:B:33:LEU:HA	1:B:50:VAL:O	2.01	0.60
1:D:205:PRO:HG2	1:D:307:ILE:CD1	2.28	0.60
1:A:10:LEU:HD22	1:A:33:LEU:HD23	1.83	0.60
1:B:105:PHE:CB	1:B:148:LYS:HE2	2.31	0.60
1:C:381:ILE:HG22	1:C:382:ARG:N	2.16	0.60

*Continued on next page...*

*Continued from previous page...*

Atom-1	Atom-2	Distance(Å)	Clash(Å)
1:A:148:LYS:HD2	1:A:177:PRO:HB2	1.82	0.60
1:D:47:ASP:HA	4:D:389:HOH:O	2.01	0.60
1:D:33:LEU:HA	1:D:50:VAL:O	2.01	0.60
1:C:318:GLY:O	1:C:351:GLY:N	2.29	0.60
1:A:76:HIS:HB3	1:A:150:MET:CE	2.32	0.60
1:A:31:ASN:ND2	1:A:66:THR:HG23	2.16	0.60
1:A:166:ILE:HG22	1:A:167:PRO:N	2.16	0.60
1:D:61:ARG:HB3	1:D:61:ARG:HH11	1.66	0.60
1:A:143:LEU:HD12	1:A:143:LEU:O	2.01	0.59
1:D:57:ARG:HD2	1:D:84:GLU:OE1	2.02	0.59
1:C:361:ALA:HB1	1:C:362:PRO:HD2	1.82	0.59
1:B:127:ASN:N	1:B:131:GLU:OE1	2.32	0.59
1:C:284:ALA:CB	1:D:337:ASN:HA	2.32	0.59
1:D:134:LYS:O	1:D:138:GLN:HG3	2.02	0.59
1:D:95:TRP:CZ3	1:D:96:GLN:HG3	2.37	0.59
1:A:226:VAL:HG11	1:A:231:ASN:OD1	2.03	0.59
1:C:141:TYR:HB3	1:C:142:PRO:HA	1.84	0.59
1:C:273:HIS:ND1	1:C:275:SER:HB3	2.17	0.59
1:B:54:PHE:N	1:B:54:PHE:CD1	2.65	0.59
1:B:316:ILE:CD1	1:B:357:ILE:HD11	2.29	0.59
1:C:382:ARG:CZ	1:C:382:ARG:HB2	2.32	0.59
1:A:321:ALA:HB3	1:A:324:THR:HG22	1.83	0.59
1:D:208:GLU:HB2	1:D:223:ALA:HA	1.85	0.58
1:D:318:GLY:HA3	1:D:349:LYS:O	2.03	0.58
1:A:329:ALA:O	1:A:332:ALA:HB3	2.03	0.58
1:B:150:MET:HA	1:B:150:MET:HE3	1.85	0.58
1:D:324:THR:O	1:D:327:GLN:N	2.30	0.58
1:A:61:ARG:NH2	1:A:84:GLU:HG2	2.19	0.58
1:B:174:LYS:N	1:B:174:LYS:CD	2.60	0.57
1:C:258:LEU:C	1:C:260:ASP:H	2.08	0.57
1:D:380:ARG:HG3	4:D:411:HOH:O	2.05	0.57
1:D:231:ASN:OD1	1:D:235:GLN:NE2	2.35	0.57
1:B:323:ASP:O	1:B:326:LEU:N	2.35	0.57
1:C:308:ARG:NH1	4:C:434:HOH:O	2.37	0.57
1:C:206:THR:HB	1:C:231[A]:ASN:HD21	1.66	0.57
1:B:188:MET:HE1	1:B:226:VAL:CG2	2.33	0.57
1:B:359:VAL:HG23	1:B:371:ILE:HD12	1.86	0.57
1:D:110:HIS:HA	1:D:113:LYS:CE	2.31	0.57
1:C:120:GLU:HB2	1:C:182:LYS:HD2	1.87	0.57
1:A:141:TYR:CD1	1:A:162:SER:HA	2.40	0.57
1:D:46:HIS:ND1	1:D:48:GLY:N	2.52	0.57
1:D:112:ARG:HG3	1:D:118:MET:HE2	1.85	0.57

*Continued on next page...*

*Continued from previous page...*

Atom-1	Atom-2	Distance(Å)	Clash(Å)
1:D:2:TRP:CZ3	1:D:3:ASN:HB3	2.40	0.57
1:B:238:ALA:O	1:B:242:VAL:HG23	2.05	0.57
1:B:226:VAL:HG13	1:B:230:ILE:CG2	2.35	0.56
1:B:26:LEU:HB3	1:B:28:ILE:HD12	1.86	0.56
1:B:308:ARG:NH1	4:B:472:HOH:O	2.31	0.56
1:D:188:MET:CE	1:D:226:VAL:HG21	2.35	0.56
1:A:137:GLU:O	1:A:137:GLU:HG3	2.05	0.56
1:B:188:MET:HE3	1:B:190:LEU:CD2	2.35	0.56
1:D:173:LEU:HD13	1:D:178:LEU:CD2	2.36	0.56
1:B:104:LYS:NZ	2:B:400:ATP:O2B	2.39	0.56
1:C:372:GLN:NE2	1:C:376:ASP:OD1	2.38	0.56
1:A:213:ASP:O	1:A:214:SER:HB2	2.05	0.56
1:A:112:ARG:HB3	1:A:112:ARG:HH11	1.71	0.56
1:C:202:LEU:N	1:C:202:LEU:HD23	2.21	0.56
1:D:142:PRO:CB	1:D:161:ASN:HA	2.34	0.56
1:B:85:VAL:HG23	1:B:91:ILE:HD11	1.87	0.56
1:C:145:LEU:HD23	1:C:173:LEU:CD1	2.30	0.56
1:D:111:LEU:HD11	1:D:268:ILE:CD1	2.34	0.56
1:B:74:ILE:HD12	1:B:77:VAL:CG1	2.36	0.56
1:A:30:VAL:O	1:A:46:HIS:NE2	2.39	0.55
1:C:278:TYR:CZ	1:C:279:THR:HG22	2.41	0.55
1:A:132:LEU:HD12	1:A:132:LEU:O	2.06	0.55
1:C:257:LEU:CD2	1:C:261:ASP:HA	2.36	0.55
1:D:159:ARG:NE	1:D:161:ASN:OD1	2.34	0.55
1:C:120:GLU:H	1:C:182:LYS:CD	2.19	0.55
1:A:232:GLN:HA	1:A:232:GLN:OE1	2.06	0.55
1:A:31:ASN:HD22	1:A:66:THR:HG23	1.72	0.55
1:A:143:LEU:HD12	1:A:160:VAL:HB	1.89	0.55
1:B:105:PHE:CZ	1:B:123:GLU:HB2	2.42	0.55
1:A:321:ALA:HB3	1:A:324:THR:HG23	1.85	0.55
1:C:155:ARG:HG2	1:C:155:ARG:NH1	2.03	0.55
1:B:103:ASN:HA	1:B:149:THR:HG22	1.89	0.55
1:D:210:VAL:HB	1:D:218:LEU:HB2	1.89	0.55
1:A:136:GLY:HA3	1:A:141:TYR:OH	2.07	0.54
1:B:124:LEU:N	1:B:124:LEU:HD12	2.21	0.54
1:C:323:ASP:O	1:C:326:LEU:HB2	2.07	0.54
1:B:359:VAL:HG21	1:B:371:ILE:HD12	1.90	0.54
1:A:187:LYS:N	1:A:257:LEU:O	2.37	0.54
1:B:33:LEU:CB	1:B:63:LEU:HD22	2.37	0.54
1:C:82:LEU:HB3	1:C:91:ILE:HD13	1.89	0.54
1:D:73:GLU:C	1:D:74:ILE:HG13	2.26	0.54
1:C:273:HIS:CE1	1:C:275:SER:HB3	2.43	0.54

*Continued on next page...*

*Continued from previous page...*

Atom-1	Atom-2	Distance(Å)	Clash(Å)
1:D:188:MET:CE	1:D:190:LEU:HD21	2.37	0.54
2:A:400:ATP:H5'2	4:A:432:HOH:O	2.07	0.54
1:A:15:LEU:HB2	1:A:73:GLU:CG	2.38	0.54
1:D:143:LEU:HB2	1:D:160:VAL:HB	1.90	0.54
1:A:143:LEU:HD11	1:A:160:VAL:HB	1.90	0.54
1:D:296:LEU:O	1:D:297:ASP:HB2	2.07	0.54
1:A:237:LEU:HD12	1:A:237:LEU:C	2.28	0.54
1:D:127:ASN:ND2	1:D:178:LEU:HD12	2.20	0.53
1:B:198:LYS:HG3	4:B:529:HOH:O	2.08	0.53
1:A:163:GLN:HA	1:A:166:ILE:HG13	1.90	0.53
1:A:101:ILE:HD12	1:A:270:SER:HB3	1.90	0.53
1:A:293:ARG:HD3	1:A:299:PRO:O	2.09	0.53
1:D:102:GLN:HG2	4:D:458:HOH:O	2.08	0.53
1:B:105:PHE:CE1	1:B:123:GLU:HB2	2.43	0.53
1:D:317:ILE:CG2	1:D:351:GLY:HA2	2.39	0.53
1:D:301:PRO:O	1:D:304:SER:HB2	2.08	0.53
1:C:191:ALA:HA	1:C:253:VAL:O	2.08	0.53
1:D:373:PRO:O	1:D:376:ASP:HB2	2.09	0.53
1:A:174:LYS:O	1:A:174:LYS:HG2	2.08	0.53
1:C:61[B]:ARG:HG3	1:C:61[B]:ARG:NH1	2.08	0.53
1:C:194:VAL:HG13	1:C:202:LEU:O	2.09	0.53
1:C:201:VAL:O	1:C:202:LEU:HD23	2.07	0.53
1:C:31:ASN:HD22	1:C:66:THR:CG2	2.21	0.53
1:A:36:ASP:HA	4:A:507:HOH:O	2.09	0.53
1:C:258:LEU:C	1:C:260:ASP:N	2.63	0.53
1:A:54:PHE:HB2	1:A:77:VAL:HG12	1.91	0.53
1:C:189:GLU:O	1:C:190:LEU:HD23	2.10	0.52
1:D:204:TYR:HB3	1:D:205:PRO:HD2	1.90	0.52
1:B:188:MET:CE	1:B:223:ALA:HB1	2.39	0.52
1:C:31:ASN:ND2	1:C:66:THR:CG2	2.72	0.52
1:D:376:ASP:HB3	1:D:380:ARG:NH1	2.24	0.52
1:C:329:ALA:O	1:C:332:ALA:HB3	2.09	0.52
1:B:105:PHE:HB3	1:B:148:LYS:HE2	1.91	0.52
1:B:92:GLU:HA	1:B:93:PRO:C	2.29	0.52
1:B:372:GLN:N	1:B:373:PRO:CD	2.73	0.52
1:B:10:LEU:HD11	1:B:82:LEU:HD21	1.91	0.52
1:C:148:LYS:HG3	1:C:177:PRO:O	2.10	0.52
1:D:34:ASP:O	1:D:41:LYS:NZ	2.26	0.52
1:D:188:MET:HE1	1:D:226:VAL:CG2	2.40	0.52
1:C:187:LYS:HD3	1:C:259:GLU:HA	1.91	0.52
1:D:33:LEU:HD12	1:D:34:ASP:N	2.25	0.52
1:D:148:LYS:HD2	1:D:177:PRO:HB2	1.91	0.52

*Continued on next page...*

*Continued from previous page...*

Atom-1	Atom-2	Distance(Å)	Clash(Å)
1:A:76:HIS:HB3	1:A:150:MET:HE3	1.92	0.52
1:D:173:LEU:HD12	1:D:178:LEU:HD22	1.91	0.51
1:D:96:GLN:HG2	4:D:404:HOH:O	2.09	0.51
1:C:254:GLU:OE2	1:C:267:GLU:HG2	2.10	0.51
1:C:123:GLU:HA	1:C:179:TYR:HA	1.93	0.51
1:C:61[A]:ARG:NH2	1:C:84:GLU:OE2	2.43	0.51
1:D:173:LEU:CD1	1:D:178:LEU:HD22	2.41	0.51
1:A:113:LYS:C	1:A:115:GLY:H	2.14	0.51
1:D:61:ARG:CB	1:D:61:ARG:HH11	2.23	0.51
1:A:91:ILE:C	1:A:92:GLU:HG2	2.29	0.51
1:D:54:PHE:CE2	1:D:74:ILE:CD1	2.93	0.51
1:C:17:ARG:HD2	1:C:39:PRO:O	2.10	0.51
1:C:95:TRP:CH2	1:C:96:GLN:HG3	2.44	0.51
1:C:308:ARG:NH1	4:C:691:HOH:O	2.27	0.51
1:D:75:GLU:O	1:D:102:GLN:HG3	2.11	0.51
1:A:196:LYS:HE3	1:A:245:PHE:O	2.10	0.51
1:B:90:LYS:HB3	4:B:432:HOH:O	2.10	0.51
1:D:372:GLN:HB3	1:D:373:PRO:CD	2.40	0.51
1:A:308:ARG:NH1	4:A:427:HOH:O	2.43	0.51
1:D:375:ILE:O	1:D:376:ASP:C	2.48	0.51
1:C:226:VAL:HG12	1:C:227:SER:O	2.11	0.51
1:A:31:ASN:HD22	1:A:66:THR:CG2	2.24	0.51
1:D:116:ILE:O	1:D:118:MET:HG2	2.10	0.51
1:D:204:TYR:HB3	1:D:205:PRO:CD	2.41	0.50
1:D:188:MET:HE1	1:D:226:VAL:HG21	1.92	0.50
1:C:356:HIS:C	1:C:356:HIS:CD2	2.85	0.50
1:B:233:LYS:HE2	1:B:233:LYS:CA	2.39	0.50
1:A:83:GLU:HG3	1:A:95:TRP:CZ2	2.46	0.50
1:A:361:ALA:CB	1:A:366:GLU:HG2	2.41	0.50
1:D:272:ILE:HG12	1:D:272:ILE:O	2.10	0.50
1:D:377:VAL:O	1:D:381:ILE:HG12	2.12	0.50
1:A:196:LYS:HD2	1:A:251:PHE:CE1	2.47	0.50
1:B:145:LEU:HD23	1:B:173:LEU:HD12	1.94	0.50
1:B:49:HIS:HB2	4:B:426:HOH:O	2.12	0.50
1:C:104:LYS:O	1:C:108:LYS:HG3	2.12	0.50
1:D:316:ILE:HG21	1:D:325:HIS:HB2	1.94	0.50
1:A:143:LEU:C	1:A:143:LEU:HD12	2.32	0.50
1:A:55:LYS:HE3	1:A:150:MET:HE2	1.94	0.50
1:C:38:SER:O	1:C:42:GLN:HG3	2.12	0.50
1:B:208:GLU:OE1	1:B:224:ARG:HB2	2.12	0.50
1:B:114:TYR:CD2	1:B:114:TYR:N	2.80	0.50
1:D:233:LYS:HD3	1:D:263:ILE:HD12	1.94	0.49

*Continued on next page...*

*Continued from previous page...*

Atom-1	Atom-2	Distance(Å)	Clash(Å)
1:B:375:ILE:O	1:B:376:ASP:C	2.50	0.49
1:D:182:LYS:HG3	1:D:183:TRP:N	2.25	0.49
1:D:361:ALA:HB1	1:D:366:GLU:HB3	1.94	0.49
1:C:205:PRO:HG2	1:C:307:ILE:HG13	1.93	0.49
1:D:85:VAL:C	1:D:87:SER:N	2.66	0.49
1:B:376:ASP:HA	4:B:493:HOH:O	2.11	0.49
1:D:260:ASP:N	1:D:260:ASP:OD1	2.45	0.49
1:C:2:TRP:CZ3	1:C:26:LEU:HD13	2.47	0.49
1:D:317:ILE:O	1:D:318:GLY:C	2.50	0.49
1:B:16:GLY:CA	1:B:73:GLU:HG3	2.41	0.49
1:D:207:VAL:HB	1:D:220:TYR:O	2.12	0.49
1:C:361:ALA:HB1	1:C:362:PRO:CD	2.43	0.49
1:B:260:ASP:N	1:B:260:ASP:OD1	2.41	0.49
1:C:105:PHE:CE1	1:C:123:GLU:HB3	2.47	0.49
1:D:85:VAL:C	1:D:87:SER:H	2.15	0.49
1:B:142:PRO:O	1:B:183:TRP:HB2	2.12	0.49
1:D:124:LEU:HD21	1:D:145:LEU:HD11	1.95	0.49
1:C:145:LEU:O	1:C:157:ASN:HA	2.13	0.49
1:D:213:ASP:O	1:D:214:SER:HB2	2.11	0.49
1:A:284:ALA:CB	1:B:337:ASN:HA	2.42	0.49
1:B:126:GLU:CB	1:B:128:THR:HG23	2.43	0.49
1:A:104:LYS:O	1:A:108:LYS:HG3	2.13	0.48
1:D:135:VAL:O	1:D:138:GLN:N	2.44	0.48
1:D:15:LEU:CB	1:D:73:GLU:HG2	2.42	0.48
1:A:142:PRO:O	1:A:183:TRP:HB2	2.13	0.48
1:C:83:GLU:HG3	1:C:95:TRP:CZ2	2.48	0.48
1:D:192:VAL:HG22	1:D:206:THR:HA	1.94	0.48
1:B:57:ARG:CG	1:B:58:GLU:N	2.75	0.48
1:B:110:HIS:O	1:B:113:LYS:HG3	2.12	0.48
1:C:171:GLU:OE1	1:C:174:LYS:HE3	2.13	0.48
1:B:58:GLU:O	1:B:62[B]:GLN:HG2	2.14	0.48
1:A:159:ARG:HG3	1:A:183:TRP:CZ3	2.48	0.48
1:D:127:ASN:HD21	1:D:178:LEU:CD1	2.24	0.48
1:A:126:GLU:HB3	1:A:128:THR:HG23	1.93	0.48
1:B:188:MET:HE2	1:B:226:VAL:HG21	1.96	0.48
1:C:94:SER:CB	1:C:97:ALA:H	2.27	0.48
1:D:33:LEU:O	1:D:34:ASP:HB2	2.14	0.48
1:C:224:ARG:NH2	1:C:368:GLU:OE1	2.45	0.48
1:D:260:ASP:OD1	1:D:262:SER:HB3	2.13	0.48
1:B:169:ALA:O	1:B:172:ALA:HB3	2.14	0.48
1:D:190:LEU:HD11	1:D:257:LEU:HB2	1.95	0.48
1:B:121:HIS:HB3	1:B:181:GLU:HB2	1.95	0.48

*Continued on next page...*



*Continued from previous page...*

Atom-1	Atom-2	Distance(Å)	Clash(Å)
1:C:159:ARG:HD3	1:C:161:ASN:OD1	2.13	0.48
1:A:128:THR:O	1:A:131:GLU:N	2.47	0.48
1:B:154:GLY:HA2	4:B:409:HOH:O	2.13	0.48
1:A:191:ALA:HA	1:A:253:VAL:O	2.14	0.48
1:C:193:ILE:CG2	1:C:250:VAL:HG13	2.44	0.48
1:D:159:ARG:HD2	1:D:183:TRP:CH2	2.49	0.47
1:D:125:VAL:HG22	1:D:131:GLU:OE2	2.13	0.47
1:B:113:LYS:HB2	1:B:114:TYR:CD2	2.49	0.47
1:D:133:ALA:O	1:D:137:GLU:HG3	2.14	0.47
1:B:142:PRO:HB3	1:B:161:ASN:HA	1.96	0.47
1:D:188:MET:SD	1:D:208:GLU:HG3	2.54	0.47
1:D:173:LEU:CD1	1:D:178:LEU:CD2	2.93	0.47
1:D:62:GLN:CA	1:D:62:GLN:NE2	2.77	0.47
1:D:34:ASP:O	1:D:51:THR:HA	2.14	0.47
1:B:237:LEU:HD23	1:B:263:ILE:HG22	1.95	0.47
1:B:258:LEU:HB2	1:B:262:SER:OG	2.14	0.47
1:C:278:TYR:CE2	1:C:279:THR:HG22	2.48	0.47
1:B:109:GLU:HA	1:B:112:ARG:HG3	1.97	0.47
1:C:2:TRP:HZ3	1:C:26:LEU:HD13	1.79	0.47
1:D:154:GLY:N	2:D:400:ATP:O1B	2.44	0.47
1:A:141:TYR:HB3	1:A:161:ASN:O	2.15	0.47
1:A:381:ILE:CG2	1:A:381:ILE:O	2.54	0.47
1:C:46:HIS:ND1	1:C:48:GLY:N	2.63	0.47
1:C:378:VAL:O	1:C:381:ILE:HB	2.15	0.47
1:C:166:ILE:N	1:C:167:PRO:CD	2.78	0.47
1:B:135:VAL:HG11	1:B:180:ALA:HB3	1.97	0.47
1:D:230:ILE:O	1:D:231:ASN:C	2.53	0.47
1:C:316:ILE:HD11	1:C:357:ILE:HD11	1.97	0.47
1:C:280:ILE:HA	1:C:286:SER:HB3	1.97	0.47
1:C:221:ALA:HA	1:C:222:PRO:C	2.34	0.47
1:B:301:PRO:O	1:B:304:SER:HB2	2.15	0.47
1:C:299:PRO:C	1:C:300:ILE:HD12	2.34	0.47
1:D:332:ALA:HB2	1:D:357:ILE:HD12	1.97	0.47
1:B:272:ILE:HG12	1:B:272:ILE:O	2.14	0.47
1:B:79:THR:CG2	1:B:98:ILE:HG22	2.44	0.47
1:B:316:ILE:CD1	1:B:357:ILE:CD1	2.90	0.46
1:A:55:LYS:CE	1:A:150:MET:HE2	2.44	0.46
1:A:364:MET:O	1:A:368:GLU:HG3	2.15	0.46
1:D:17:ARG:N	1:D:40:ALA:HB2	2.30	0.46
1:A:16:GLY:H	1:A:73:GLU:HG3	1.73	0.46
1:B:59:ALA:CA	1:B:62[B]:GLN:HG3	2.35	0.46
1:A:67[A]:CYS:SG	1:A:70:VAL:HG22	2.54	0.46

*Continued on next page...*



*Continued from previous page...*

Atom-1	Atom-2	Distance(Å)	Clash(Å)
1:A:166:ILE:CB	1:A:167:PRO:CD	2.94	0.46
1:B:26:LEU:CB	1:B:28:ILE:HD12	2.45	0.46
1:D:57:ARG:O	1:D:61:ARG:HG3	2.15	0.46
1:A:218:LEU:HA	1:A:313:MET:O	2.15	0.46
1:C:35:ALA:O	1:C:41:LYS:HD2	2.15	0.46
1:A:16:GLY:CA	1:A:73:GLU:HG3	2.46	0.46
1:A:363:THR:OG1	1:A:366:GLU:HB3	2.15	0.46
1:C:124:LEU:HD12	1:C:124:LEU:N	2.31	0.46
1:A:114:TYR:CD1	1:A:244:ALA:HB2	2.50	0.46
1:C:74:ILE:HG13	1:C:75:GLU:N	2.30	0.46
1:A:271:ARG:HD2	1:A:272:ILE:O	2.16	0.46
1:D:73:GLU:OE2	4:D:427:HOH:O	2.20	0.46
1:B:188:MET:HE1	1:B:223:ALA:HB1	1.96	0.46
1:C:379:ASP:O	1:C:382:ARG:HD2	2.16	0.46
1:D:54:PHE:CD2	1:D:74:ILE:CD1	2.98	0.46
1:D:33:LEU:C	1:D:33:LEU:HD12	2.36	0.46
1:B:123:GLU:C	1:B:124:LEU:HD12	2.36	0.46
1:C:135:VAL:HA	1:C:138:GLN:HE21	1.79	0.46
1:D:108:LYS:NZ	1:D:181:GLU:OE2	2.41	0.46
1:B:372:GLN:N	1:B:373:PRO:HD2	2.31	0.46
1:A:144:MET:HG3	1:A:146:LYS:HG2	1.97	0.46
1:D:324:THR:O	1:D:325:HIS:C	2.54	0.46
1:C:166:ILE:HB	1:C:167:PRO:HD3	1.98	0.46
1:B:318:GLY:N	1:B:352:ARG:O	2.43	0.46
1:D:65:LYS:HE3	1:D:65:LYS:HB3	1.75	0.46
1:D:31:ASN:OD1	1:D:46:HIS:HE1	1.99	0.45
1:D:104:LYS:NZ	2:D:400:ATP:O2B	2.47	0.45
1:D:332:ALA:HA	1:D:335:ILE:HG13	1.98	0.45
1:C:265:LEU:HG	1:C:266:CYS:N	2.30	0.45
1:C:103:ASN:HB3	1:C:106:ASN:HB2	1.97	0.45
1:D:364:MET:O	1:D:368:GLU:HG3	2.17	0.45
1:D:124:LEU:CD2	1:D:145:LEU:HD11	2.46	0.45
1:C:333:LEU:HD23	1:C:340:ILE:CD1	2.46	0.45
1:B:303:GLN:HB2	4:B:514:HOH:O	2.16	0.45
1:B:57:ARG:CD	1:B:61:ARG:HD3	2.47	0.45
1:B:83:GLU:HG3	1:B:95:TRP:CE2	2.51	0.45
1:D:372:GLN:N	1:D:373:PRO:CD	2.79	0.45
1:C:228:ASP:O	1:C:229:ALA:C	2.53	0.45
1:D:70:VAL:HG21	1:D:89:VAL:HG11	1.97	0.45
1:A:227:SER:H	1:A:230:ILE:HD12	1.81	0.45
1:D:322:PRO:O	1:D:325:HIS:HE1	1.99	0.45
1:B:149:THR:O	1:B:150:MET:HB2	2.16	0.45

*Continued on next page...*

*Continued from previous page...*

Atom-1	Atom-2	Distance(Å)	Clash(Å)
1:D:112:ARG:N	1:D:118:MET:HE1	2.32	0.45
1:B:123:GLU:OE1	1:B:148:LYS:NZ	2.49	0.45
1:D:85:VAL:O	1:D:87:SER:N	2.50	0.45
1:B:111:LEU:HA	1:B:111:LEU:HD23	1.46	0.45
1:B:133:ALA:HB1	1:B:163:GLN:NE2	2.31	0.45
1:C:375:ILE:O	1:C:376:ASP:C	2.55	0.45
1:C:123:GLU:HA	1:C:179:TYR:CB	2.48	0.45
1:B:126:GLU:HB3	1:B:128:THR:HG23	1.99	0.45
1:D:70:VAL:HG23	1:D:89:VAL:HG21	1.98	0.45
1:A:57:ARG:HD2	1:A:81:ALA:HB2	1.99	0.45
1:C:326:LEU:HD22	1:C:326:LEU:HA	1.52	0.44
1:D:95:TRP:CH2	1:D:96:GLN:HG3	2.52	0.44
1:D:12:GLY:O	1:D:38:SER:HB2	2.17	0.44
1:C:349:LYS:HA	1:C:349:LYS:HD2	1.79	0.44
1:C:92:GLU:HA	1:C:92:GLU:OE1	2.17	0.44
1:B:316:ILE:CG1	1:B:357:ILE:CD1	2.96	0.44
1:C:293:ARG:O	1:C:297:ASP:N	2.50	0.44
1:B:361:ALA:HB1	1:B:366:GLU:HB3	1.99	0.44
1:B:182:LYS:HE2	4:B:475:HOH:O	2.18	0.44
1:D:82:LEU:HA	1:D:82:LEU:HD23	1.43	0.44
1:B:176:ARG:HD3	1:B:176:ARG:HH21	1.60	0.44
1:C:156:GLY:HA2	1:C:173:LEU:HD22	1.98	0.44
1:D:16:GLY:H	1:D:73:GLU:HG3	1.76	0.44
1:D:258:LEU:O	1:D:261:ASP:N	2.48	0.44
1:B:116:ILE:O	1:B:118:MET:HG2	2.18	0.44
1:C:171:GLU:OE2	1:C:174:LYS:HE3	2.17	0.44
1:B:313:MET:HG2	1:B:314:LEU:N	2.33	0.44
1:C:361:ALA:HA	1:C:362:PRO:HD3	1.69	0.44
1:A:332:ALA:CB	1:A:357:ILE:HD12	2.48	0.44
1:A:23:ALA:HB2	1:A:292:LEU:HD11	1.99	0.44
1:D:264:MET:HE2	1:D:264:MET:HB2	1.45	0.44
1:B:34:ASP:O	1:B:51:THR:HA	2.18	0.44
1:D:321:ALA:HA	1:D:322:PRO:HD3	1.70	0.44
1:A:123:GLU:HG3	1:A:148:LYS:HZ3	1.83	0.44
1:D:332:ALA:CB	1:D:357:ILE:CD1	2.95	0.44
1:C:226:VAL:O	1:C:227:SER:O	2.36	0.44
1:C:379:ASP:O	1:C:382:ARG:CG	2.65	0.44
1:D:143:LEU:HA	1:D:143:LEU:HD23	1.55	0.44
1:B:141:TYR:HA	1:B:142:PRO:C	2.36	0.44
1:D:121:HIS:O	1:D:122:ARG:HD3	2.18	0.44
1:A:45:ALA:HB2	1:B:45:ALA:HB2	1.99	0.44
1:A:342:LEU:HD23	1:A:342:LEU:HA	1.65	0.44

*Continued on next page...*

*Continued from previous page...*

Atom-1	Atom-2	Distance(Å)	Clash(Å)
1:C:107:GLN:OE1	1:C:268:ILE:HG22	2.18	0.44
1:C:193:ILE:HG23	1:C:250:VAL:HG13	1.99	0.44
1:D:379:ASP:O	1:D:380:ARG:C	2.54	0.43
1:D:380:ARG:HD3	4:D:411:HOH:O	2.17	0.43
1:C:318:GLY:HA2	1:C:348:ALA:HB1	2.00	0.43
1:A:95:TRP:CE3	1:A:96[B]:GLN:HG3	2.53	0.43
1:B:310:PRO:HD2	1:B:361:ALA:O	2.18	0.43
1:D:150:MET:HE2	1:D:150:MET:HB3	1.89	0.43
1:B:254:GLU:C	1:B:255:MET:HG3	2.38	0.43
1:D:75:GLU:H	1:D:75:GLU:HG3	1.59	0.43
1:C:22:SER:HB3	4:C:464:HOH:O	2.17	0.43
1:C:57:ARG:HB2	1:C:57:ARG:HE	1.16	0.43
1:A:163:GLN:HG3	1:A:164:ASP:N	2.34	0.43
1:A:171:GLU:O	1:A:174:LYS:HB3	2.19	0.43
1:C:236:GLU:O	1:C:237:LEU:C	2.57	0.43
1:D:343:TYR:CD2	1:D:343:TYR:N	2.83	0.43
1:D:110:HIS:O	1:D:113:LYS:HB2	2.18	0.43
1:A:15:LEU:HD13	1:A:272:ILE:HG13	2.00	0.43
1:B:227:SER:O	1:B:228:ASP:C	2.55	0.43
1:A:310:PRO:HG2	1:A:363:THR:CA	2.49	0.43
1:D:324:THR:O	1:D:327:GLN:HB3	2.18	0.43
1:C:361:ALA:CB	1:C:362:PRO:CD	2.96	0.43
1:B:213:ASP:O	1:B:214:SER:HB2	2.18	0.43
1:B:320:ALA:HA	1:B:350:PRO:HG3	2.00	0.43
1:B:324:THR:O	1:B:327:GLN:HB2	2.18	0.43
1:B:124:LEU:CD1	1:B:124:LEU:N	2.81	0.43
1:C:297:ASP:HA	4:C:406:HOH:O	2.17	0.43
1:D:64:ALA:C	1:D:66:THR:N	2.71	0.43
1:D:94:SER:O	1:D:97:ALA:HB3	2.19	0.43
1:B:226:VAL:HG13	1:B:230:ILE:HG21	1.99	0.43
1:C:166:ILE:O	1:C:167:PRO:C	2.57	0.43
1:B:97:ALA:O	1:B:98:ILE:C	2.55	0.43
1:A:81:ALA:O	1:A:85:VAL:HG22	2.19	0.43
1:D:38:SER:OG	1:D:41:LYS:HG3	2.19	0.42
1:D:61:ARG:HB3	1:D:61:ARG:NH1	2.34	0.42
1:B:152:TYR:OH	1:B:155:ARG:NH1	2.52	0.42
1:D:141:TYR:HB3	1:D:161:ASN:O	2.19	0.42
1:B:14:GLN:HG2	1:B:15:LEU:N	2.34	0.42
1:B:146:LYS:HE2	2:B:400:ATP:N7	2.34	0.42
1:C:378:VAL:HG23	1:C:379:ASP:N	2.34	0.42
1:A:348:ALA:O	1:A:349:LYS:HD3	2.19	0.42
1:C:94:SER:HB3	1:C:97:ALA:H	1.84	0.42

*Continued on next page...*

*Continued from previous page...*

Atom-1	Atom-2	Distance(Å)	Clash(Å)
1:D:188:MET:CE	1:D:226:VAL:CG2	2.98	0.42
1:A:58:GLU:HA	1:A:61:ARG:HB2	2.01	0.42
1:D:8:GLY:HA2	1:D:31:ASN:O	2.19	0.42
1:D:342:LEU:HA	1:D:342:LEU:HD23	1.78	0.42
1:A:321:ALA:HA	1:A:322:PRO:HD3	1.95	0.42
1:A:226:VAL:HG12	1:A:227:SER:O	2.18	0.42
1:B:231:ASN:OD1	1:B:235:GLN:NE2	2.49	0.42
1:B:321:ALA:HA	1:B:322:PRO:HD3	1.72	0.42
1:D:166:ILE:N	1:D:167:PRO:CD	2.82	0.42
1:D:187:LYS:HE3	1:D:259:GLU:HA	2.01	0.42
1:D:237:LEU:HD12	1:D:237:LEU:O	2.19	0.42
1:A:321:ALA:HB1	1:A:323:ASP:OD1	2.18	0.42
1:D:368:GLU:HG3	4:D:474:HOH:O	2.18	0.42
1:D:37:ASN:C	1:D:37:ASN:ND2	2.73	0.42
1:C:296:LEU:O	1:C:297:ASP:HB2	2.19	0.42
1:C:171:GLU:CD	1:C:174:LYS:HE3	2.40	0.42
1:D:332:ALA:HB2	1:D:357:ILE:CD1	2.49	0.42
1:D:170:LEU:HA	1:D:170:LEU:HD23	1.93	0.42
1:D:196:LYS:HD2	1:D:242:VAL:HG12	2.02	0.42
1:D:188:MET:HG3	1:D:189:GLU:N	2.34	0.42
1:C:69:VAL:HG23	1:C:90:LYS:HB3	2.01	0.42
1:C:122:ARG:HG2	1:C:139:LEU:HD21	2.02	0.42
1:A:321:ALA:O	1:A:324:THR:HG23	2.20	0.42
1:D:325:HIS:CE1	1:D:348:ALA:HB2	2.55	0.42
1:C:202:LEU:HD12	1:C:305:LEU:HD11	2.01	0.42
1:D:323:ASP:O	1:D:324:THR:O	2.38	0.42
1:C:104:LYS:HE2	4:C:414:HOH:O	2.20	0.42
1:B:7:VAL:O	1:B:30:VAL:HA	2.20	0.42
1:A:43:ILE:HA	1:B:43:ILE:O	2.20	0.42
1:A:26:LEU:O	1:A:27:ASN:HB2	2.20	0.41
1:B:293:ARG:HD3	1:B:293:ARG:HH11	1.73	0.41
1:A:62:GLN:O	1:A:63:LEU:C	2.57	0.41
1:A:372:GLN:O	1:A:373:PRO:C	2.58	0.41
1:A:292:LEU:O	1:A:296:LEU:HD12	2.19	0.41
1:D:375:ILE:O	1:D:378:VAL:N	2.53	0.41
1:D:226:VAL:HG13	1:D:230:ILE:HB	2.03	0.41
1:A:231:ASN:O	1:A:235:GLN:HG2	2.20	0.41
1:A:55:LYS:NZ	1:A:150:MET:CE	2.84	0.41
1:B:3:ASN:OD1	1:B:3:ASN:N	2.53	0.41
1:C:218:LEU:HA	1:C:313:MET:O	2.21	0.41
1:D:379:ASP:O	1:D:381:ILE:N	2.53	0.41
1:C:141:TYR:HA	1:C:142:PRO:C	2.39	0.41

*Continued on next page...*

*Continued from previous page...*

Atom-1	Atom-2	Distance(Å)	Clash(Å)
1:A:36:ASP:O	1:A:37[B]:ASN:HB3	2.20	0.41
1:C:103:ASN:CB	1:C:106:ASN:ND2	2.83	0.41
1:A:198:LYS:HG3	1:A:199:ASP:CG	2.41	0.41
1:C:343:TYR:HB2	1:C:345:LYS:HD2	2.02	0.41
1:B:112:ARG:HG2	1:B:118:MET:HE1	2.02	0.41
1:D:126:GLU:H	1:D:131:GLU:CD	2.23	0.41
1:A:113:LYS:C	1:A:115:GLY:N	2.74	0.41
1:B:237:LEU:HD23	1:B:263:ILE:CG2	2.50	0.41
1:A:341:HIS:CE1	1:B:25:ARG:NH1	2.88	0.41
2:C:400:ATP:H5'2	4:C:398:HOH:O	2.19	0.41
1:D:146:LYS:HB3	1:D:157:ASN:OD1	2.20	0.41
1:A:100:THR:HG22	1:A:107:GLN:HA	2.01	0.41
1:B:211:GLN:HA	1:B:215:ILE:O	2.21	0.41
1:D:74:ILE:HG22	1:D:75:GLU:N	2.36	0.41
1:D:74:ILE:HG22	1:D:75:GLU:H	1.86	0.41
1:C:300:ILE:N	1:C:300:ILE:HD12	2.36	0.41
1:A:55:LYS:NZ	1:A:150:MET:HE2	2.36	0.41
1:C:174:LYS:O	1:C:176:ARG:HG3	2.20	0.41
1:B:237:LEU:O	1:B:237:LEU:HD12	2.21	0.41
1:D:70:VAL:CG2	1:D:89:VAL:HG11	2.50	0.41
1:B:342:LEU:HD23	1:B:342:LEU:HA	1.86	0.41
1:D:110:HIS:CA	1:D:113:LYS:HE3	2.34	0.41
1:A:123:GLU:HG3	1:A:148:LYS:NZ	2.36	0.41
1:D:25:ARG:NH1	4:D:849:HOH:O	2.50	0.41
1:A:103:ASN:HB3	1:A:106:ASN:HB2	2.02	0.41
1:D:141:TYR:HB3	1:D:142:PRO:CA	2.49	0.41
1:A:324:THR:O	1:A:327:GLN:N	2.54	0.41
1:B:188:MET:HE3	1:B:190:LEU:HD21	1.93	0.41
1:D:41:LYS:HE2	1:D:49:HIS:HB3	2.02	0.41
1:D:370:HIS:O	4:D:471:HOH:O	2.22	0.41
1:C:213:ASP:O	1:C:214:SER:HB2	2.21	0.41
1:C:226:VAL:HG13	1:C:230:ILE:HB	2.03	0.41
1:C:82:LEU:O	1:C:83:GLU:C	2.59	0.41
1:C:330:GLU:HB2	1:D:2:TRP:NE1	2.36	0.41
1:D:3:ASN:OD1	1:D:3:ASN:N	2.54	0.41
1:A:196:LYS:HD3	1:A:247:GLY:O	2.21	0.41
1:C:237:LEU:HD13	1:C:255:MET:SD	2.61	0.41
1:D:293:ARG:HA	1:D:298:LEU:HB2	2.01	0.41
1:A:224:ARG:O	1:A:225:ASN:HB2	2.20	0.41
1:A:33:LEU:HD12	1:A:34:ASP:N	2.36	0.41
1:A:255:MET:HB3	1:A:263:ILE:CG2	2.51	0.41
1:A:189:GLU:OE1	1:A:211:GLN:NE2	2.44	0.41

*Continued on next page...*

Continued from previous page...

Atom-1	Atom-2	Distance(Å)	Clash(Å)
1:B:193:ILE:HA	1:B:193:ILE:HD13	1.93	0.41
1:C:349:LYS:HA	1:C:350:PRO:HD3	1.85	0.40
1:D:2:TRP:CE3	1:D:3:ASN:HB3	2.56	0.40
1:B:258:LEU:O	1:B:261:ASP:N	2.50	0.40
1:B:135:VAL:O	1:B:138:GLN:N	2.50	0.40
1:B:55:LYS:HE2	4:B:760:HOH:O	2.21	0.40
1:D:46:HIS:CE1	1:D:48:GLY:HA3	2.56	0.40
1:D:196:LYS:NZ	1:D:247:GLY:O	2.38	0.40
1:C:233:LYS:HB3	1:C:263:ILE:CD1	2.39	0.40
1:B:19:LEU:HA	1:B:19:LEU:HD12	1.62	0.40
1:B:285:LEU:HG	1:B:304:SER:HB3	2.03	0.40
1:A:316:ILE:CG2	1:A:325:HIS:HA	2.51	0.40
1:C:126:GLU:HB3	1:C:128:THR:CG2	2.45	0.40
1:D:378:VAL:O	1:D:381:ILE:HG12	2.22	0.40
1:A:254:GLU:OE2	1:A:267:GLU:HG2	2.21	0.40
1:A:10:LEU:HD23	1:A:63:LEU:HD22	2.03	0.40
1:B:273:HIS:CD2	4:B:547:HOH:O	2.74	0.40

There are no symmetry-related clashes.

## 5.3 Torsion angles

### 5.3.1 Protein backbone ⓘ

In the following table, the Percentiles column shows the percent Ramachandran outliers of the chain as a percentile score with respect to all X-ray entries followed by that with respect to entries of similar resolution. The Analysed column shows the number of residues for which the backbone conformation was analysed, and the total number of residues.

Mol	Chain	Analysed	Favoured	Allowed	Outliers	Percentiles	
1	A	384/403 (95%)	363 (94%)	20 (5%)	1 (0%)	50	49
1	B	383/403 (95%)	368 (96%)	15 (4%)	0	100	100
1	C	382/403 (95%)	361 (94%)	19 (5%)	2 (0%)	38	33
1	D	379/403 (94%)	351 (93%)	27 (7%)	1 (0%)	50	49
All	All	1528/1612 (95%)	1443 (94%)	81 (5%)	4 (0%)	50	49

All (4) Ramachandran outliers are listed below:

Mol	Chain	Res	Type
1	C	259	GLU

Continued on next page...

*Continued from previous page...*

Mol	Chain	Res	Type
1	C	227	SER
1	D	324	THR
1	A	57	ARG

### 5.3.2 Protein sidechains ⓘ

In the following table, the Percentiles column shows the percent sidechain outliers of the chain as a percentile score with respect to all X-ray entries followed by that with respect to entries of similar resolution. The Analysed column shows the number of residues for which the sidechain conformation was analysed, and the total number of residues.

Mol	Chain	Analysed	Rotameric	Outliers	Percentiles	
1	A	322/336 (96%)	282 (88%)	40 (12%)	7	3
1	B	321/336 (96%)	293 (91%)	28 (9%)	15	10
1	C	320/336 (95%)	280 (88%)	40 (12%)	7	3
1	D	317/336 (94%)	281 (89%)	36 (11%)	8	4
All	All	1280/1344 (95%)	1136 (89%)	144 (11%)	9	4

All (144) residues with a non-rotameric sidechain are listed below:

Mol	Chain	Res	Type
1	A	1	MET
1	A	19	LEU
1	A	44	SER
1	A	47	ASP
1	A	55	LYS
1	A	57	ARG
1	A	61	ARG
1	A	62	GLN
1	A	65	LYS
1	A	66	THR
1	A	73	GLU
1	A	84	GLU
1	A	104	LYS
1	A	113	LYS
1	A	131	GLU
1	A	138	GLN
1	A	139	LEU
1	A	145	LEU
1	A	147	SER

*Continued on next page...*

*Continued from previous page...*

Mol	Chain	Res	Type
1	A	149	THR
1	A	150	MET
1	A	155	ARG
1	A	159	ARG
1	A	163	GLN
1	A	193	ILE
1	A	199	ASP
1	A	202	LEU
1	A	228	ASP
1	A	232	GLN
1	A	233	LYS
1	A	237	LEU
1	A	264	MET
1	A	265	LEU
1	A	270	SER
1	A	271	ARG
1	A	274	ASN
1	A	305	LEU
1	A	311	SER
1	A	344	SER
1	A	350	PRO
1	B	4	SER
1	B	5	ARG
1	B	26	LEU
1	B	39	PRO
1	B	44	SER
1	B	57	ARG
1	B	62[A]	GLN
1	B	62[B]	GLN
1	B	73	GLU
1	B	74	ILE
1	B	75	GLU
1	B	102	GLN
1	B	143	LEU
1	B	167	PRO
1	B	174	LYS
1	B	178	LEU
1	B	200	GLU
1	B	211	GLN
1	B	230	ILE
1	B	233	LYS
1	B	265	LEU

*Continued on next page...*



*Continued from previous page...*

Mol	Chain	Res	Type
1	B	272	ILE
1	B	274	ASN
1	B	327	GLN
1	B	334	SER
1	B	344	SER
1	B	362	PRO
1	B	381	ILE
1	C	6	LYS
1	C	26	LEU
1	C	47	ASP
1	C	57	ARG
1	C	73	GLU
1	C	87	SER
1	C	88	GLU
1	C	90	LYS
1	C	114	TYR
1	C	118	MET
1	C	120	GLU
1	C	126	GLU
1	C	139	LEU
1	C	142	PRO
1	C	155	ARG
1	C	159	ARG
1	C	163	GLN
1	C	174	LYS
1	C	182	LYS
1	C	196	LYS
1	C	197	THR
1	C	202	LEU
1	C	208	GLU
1	C	218	LEU
1	C	232	GLN
1	C	233	LYS
1	C	237	LEU
1	C	239	ARG
1	C	240	LYS
1	C	257	LEU
1	C	258	LEU
1	C	259	GLU
1	C	274	ASN
1	C	313	MET
1	C	323	ASP

*Continued on next page...*

*Continued from previous page...*

Mol	Chain	Res	Type
1	C	324	THR
1	C	326	LEU
1	C	330	GLU
1	C	339	SER
1	C	344	SER
1	D	4	SER
1	D	6	LYS
1	D	37	ASN
1	D	47	ASP
1	D	54	PHE
1	D	55	LYS
1	D	56	GLU
1	D	58	GLU
1	D	61	ARG
1	D	62	GLN
1	D	63	LEU
1	D	65	LYS
1	D	66	THR
1	D	71	THR
1	D	74	ILE
1	D	75	GLU
1	D	84	GLU
1	D	87	SER
1	D	96	GLN
1	D	125	VAL
1	D	126	GLU
1	D	150	MET
1	D	174	LYS
1	D	176	ARG
1	D	182	LYS
1	D	187	LYS
1	D	188	MET
1	D	248	LYS
1	D	262	SER
1	D	264	MET
1	D	272	ILE
1	D	274	ASN
1	D	326	LEU
1	D	344	SER
1	D	366	GLU
1	D	378	VAL

Some sidechains can be flipped to improve hydrogen bonding and reduce clashes. All (14) such

sidechains are listed below:

Mol	Chain	Res	Type
1	A	62	GLN
1	A	138	GLN
1	A	225	ASN
1	B	106	ASN
1	B	163	GLN
1	B	232	GLN
1	C	102	GLN
1	C	106	ASN
1	C	232	GLN
1	D	62	GLN
1	D	106	ASN
1	D	127	ASN
1	D	138	GLN
1	D	325	HIS

### 5.3.3 RNA ⓘ

There are no RNA chains in this entry.

## 5.4 Non-standard residues in protein, DNA, RNA chains ⓘ

There are no non-standard protein/DNA/RNA residues in this entry.

## 5.5 Carbohydrates ⓘ

There are no carbohydrates in this entry.

## 5.6 Ligand geometry ⓘ

Of 12 ligands modelled in this entry, 8 are monoatomic - leaving 4 for Mogul analysis.

In the following table, the Counts columns list the number of bonds (or angles) for which Mogul statistics could be retrieved, the number of bonds (or angles) that are observed in the model and the number of bonds (or angles) that are defined in the chemical component dictionary. The Link column lists molecule types, if any, to which the group is linked. The Z score for a bond length (or angle) is the number of standard deviations the observed value is removed from the expected value. A bond length (or angle) with  $|Z| > 2$  is considered an outlier worth inspection. RMSZ is the root-mean-square of all Z scores of the bond lengths (or angles).

Mol	Type	Chain	Res	Link	Bond lengths			Bond angles		
					Counts	RMSZ	# Z  > 2	Counts	RMSZ	# Z  > 2
2	ATP	A	400	3	33,33,33	0.90	1 (3%)	52,52,52	2.18	14 (26%)
2	ATP	B	400	3	33,33,33	1.00	2 (6%)	52,52,52	2.25	12 (23%)
2	ATP	C	400	3	33,33,33	0.86	0	52,52,52	2.07	12 (23%)
2	ATP	D	400	3	33,33,33	0.97	2 (6%)	52,52,52	2.58	17 (32%)

In the following table, the Chirals column lists the number of chiral outliers, the number of chiral centers analysed, the number of these observed in the model and the number defined in the chemical component dictionary. Similar counts are reported in the Torsion and Rings columns. '-' means no outliers of that kind were identified.

Mol	Type	Chain	Res	Link	Chirals	Torsions	Rings
2	ATP	A	400	3	-	0/22/38/38	0/1/3/3
2	ATP	B	400	3	-	0/22/38/38	0/1/3/3
2	ATP	C	400	3	-	0/22/38/38	0/1/3/3
2	ATP	D	400	3	-	0/22/38/38	0/1/3/3

All (5) bond length outliers are listed below:

Mol	Chain	Res	Type	Atoms	Z	Observed(Å)	Ideal(Å)
2	B	400	ATP	C6-N6	-3.19	1.24	1.35
2	D	400	ATP	C2-N1	2.47	1.38	1.33
2	A	400	ATP	C6-N6	-2.41	1.27	1.35
2	D	400	ATP	C6-N6	-2.19	1.28	1.35
2	B	400	ATP	C2-N1	2.06	1.38	1.33

All (55) bond angle outliers are listed below:

Mol	Chain	Res	Type	Atoms	Z	Observed(°)	Ideal(°)
2	B	400	ATP	O4'-C1'-N9	-10.74	98.45	108.44
2	D	400	ATP	C2-N1-C6	8.83	134.72	118.77
2	D	400	ATP	N3-C2-N1	-7.47	122.46	128.71
2	C	400	ATP	C4'-O4'-C1'	7.28	117.65	109.75
2	D	400	ATP	O3A-PB-O3B	7.04	115.99	101.66
2	C	400	ATP	N3-C2-N1	-6.26	123.47	128.71
2	A	400	ATP	C2-N1-C6	5.97	129.56	118.77
2	A	400	ATP	C5-C6-N6	5.73	133.69	120.72
2	B	400	ATP	C5-C6-N6	5.56	133.28	120.72
2	D	400	ATP	C5-C6-N1	-5.16	101.94	119.27
2	A	400	ATP	N3-C2-N1	-5.12	124.43	128.71
2	A	400	ATP	O4'-C1'-N9	-4.77	104.00	108.44
2	A	400	ATP	C2'-C1'-N9	-4.53	101.65	113.27

*Continued on next page...*

*Continued from previous page...*

Mol	Chain	Res	Type	Atoms	Z	Observed(°)	Ideal(°)
2	C	400	ATP	O4'-C1'-N9	4.50	112.62	108.44
2	D	400	ATP	C5-C6-N6	4.26	130.35	120.72
2	D	400	ATP	N6-C6-N1	4.22	127.64	119.36
2	A	400	ATP	C5-C6-N1	-3.93	106.07	119.27
2	C	400	ATP	C2'-C1'-N9	-3.87	103.34	113.27
2	B	400	ATP	N6-C6-N1	-3.68	112.13	119.36
2	D	400	ATP	O4'-C1'-N9	-3.59	105.10	108.44
2	C	400	ATP	C3'-C2'-C1'	3.21	105.92	100.91
2	C	400	ATP	C5-C6-N6	3.14	127.82	120.72
2	B	400	ATP	O3'-C3'-C2'	3.08	121.86	111.83
2	B	400	ATP	C8-N9-C4	-3.02	104.59	106.90
2	C	400	ATP	O4'-C1'-C2'	-2.94	102.27	106.77
2	B	400	ATP	O2'-C2'-C1'	-2.92	102.41	111.23
2	A	400	ATP	O3'-C3'-C4'	-2.89	102.56	111.08
2	B	400	ATP	O2A-PA-O5'	-2.85	94.15	108.51
2	B	400	ATP	C4'-O4'-C1'	2.78	112.77	109.75
2	C	400	ATP	N3-C4-N9	2.75	130.40	125.43
2	C	400	ATP	C8-N9-C4	-2.74	104.81	106.90
2	D	400	ATP	C6-C5-C4	2.70	122.20	117.25
2	B	400	ATP	O3G-PG-O2G	2.69	118.09	107.61
2	A	400	ATP	O3A-PB-O3B	2.55	106.84	101.66
2	B	400	ATP	O2B-PB-O1B	2.52	126.31	112.21
2	C	400	ATP	O3A-PA-O5'	-2.52	92.15	103.41
2	A	400	ATP	O2G-PG-O1G	2.49	118.58	110.44
2	A	400	ATP	O5'-PA-O1A	2.44	118.94	109.37
2	D	400	ATP	C5-C4-N3	2.42	130.97	125.70
2	D	400	ATP	O3B-PB-O1B	-2.41	93.97	111.28
2	A	400	ATP	C2'-C3'-C4'	-2.32	98.02	102.65
2	C	400	ATP	N6-C6-N1	-2.25	114.94	119.36
2	B	400	ATP	O4'-C4'-C3'	-2.24	100.62	105.17
2	D	400	ATP	C2-N3-C4	-2.24	107.64	114.01
2	A	400	ATP	O3G-PG-O3B	2.24	115.76	105.14
2	A	400	ATP	O4'-C4'-C3'	-2.21	100.69	105.17
2	D	400	ATP	PB-O3B-PG	-2.18	125.29	131.68
2	D	400	ATP	O3'-C3'-C2'	2.18	118.91	111.83
2	D	400	ATP	O2A-PA-O3A	2.12	115.17	105.14
2	A	400	ATP	C6-C5-C4	2.09	121.08	117.25
2	B	400	ATP	C3'-C2'-C1'	2.04	104.10	100.91
2	C	400	ATP	PA-O5'-C5'	-2.03	107.45	122.03
2	D	400	ATP	C8-N9-C1'	2.02	130.36	126.38
2	D	400	ATP	O2G-PG-O1G	-2.00	103.89	110.44
2	D	400	ATP	O2B-PB-O3B	2.00	114.63	105.14

There are no chirality outliers.

There are no torsion outliers.

There are no ring outliers.

## 5.7 Other polymers ⓘ

There are no such residues in this entry.

## 5.8 Polymer linkage issues

There are no chain breaks in this entry.

## 6 Fit of model and data ⓘ

### 6.1 Protein, DNA and RNA chains ⓘ

In the following table, the column labelled ‘#RSRZ> 2’ contains the number (and percentage) of RSRZ outliers, followed by percent RSRZ outliers for the chain as percentile scores relative to all X-ray entries and entries of similar resolution. The OWAB column contains the minimum, median, 95<sup>th</sup> percentile and maximum values of the occupancy-weighted average B-factor per residue. The column labelled ‘Q< 0.9’ lists the number of (and percentage) of residues with an average occupancy less than 0.9.

Mol	Chain	Analysed	<RSRZ>	#RSRZ>2	OWAB(Å <sup>2</sup> )	Q<0.9
1	A	382/403 (94%)	-0.12	2 (0%) 88 91	7, 25, 62, 81	0
1	B	380/403 (94%)	-0.09	7 (1%) 65 69	6, 24, 64, 86	0
1	C	382/403 (94%)	-0.05	0 100 100	12, 31, 69, 93	0
1	D	380/403 (94%)	0.04	4 (1%) 77 81	11, 29, 70, 93	0
All	All	1524/1612 (94%)	-0.05	13 (0%) 83 85	6, 28, 67, 93	0

All (13) RSRZ outliers are listed below:

Mol	Chain	Res	Type	RSRZ
1	B	381	ILE	5.1
1	D	381	ILE	4.3
1	B	321	ALA	3.3
1	B	323	ASP	3.1
1	A	323	ASP	2.4
1	D	322	PRO	2.4
1	D	321	ALA	2.2
1	B	174	LYS	2.1
1	B	152	TYR	2.1
1	A	348	ALA	2.1
1	B	326	LEU	2.0
1	B	128	THR	2.0
1	D	323	ASP	2.0

### 6.2 Non-standard residues in protein, DNA, RNA chains ⓘ

There are no non-standard protein/DNA/RNA residues in this entry.

### 6.3 Carbohydrates ⓘ

There are no carbohydrates in this entry.

### 6.4 Ligands ⓘ

In the following table, the Atoms column lists the number of modelled atoms in the group and the number defined in the chemical component dictionary. LLDF column lists the quality of electron density of the group with respect to its neighbouring residues in protein, DNA or RNA chains. The B-factors column lists the minimum, median, 95<sup>th</sup> percentile and maximum values of B factors of atoms in the group. The column labelled 'Q< 0.9' lists the number of atoms with occupancy less than 0.9.

Mol	Type	Chain	Res	Atoms	RSR	LLDF	B-factors(Å <sup>2</sup> )	Q<0.9
3	MG	B	401	1/1	0.09	0.21	22,22,22,22	0
2	ATP	B	400	31/31	0.10	-0.43	7,28,44,63	0
3	MG	D	401	1/1	0.09	-0.54	33,33,33,33	0
2	ATP	C	400	31/31	0.10	-0.81	12,30,82,100	0
3	MG	B	402	1/1	0.08	-0.94	25,25,25,25	0
2	ATP	D	400	31/31	0.09	-1.00	12,26,56,100	0
2	ATP	A	400	31/31	0.09	-1.13	9,23,33,75	0
3	MG	D	402	1/1	0.05	-2.35	24,24,24,24	0
3	MG	A	401	1/1	0.04	-2.45	14,14,14,14	0
3	MG	A	402	1/1	0.07	-3.21	24,24,24,24	0
3	MG	C	402	1/1	0.08	-3.30	22,22,22,22	0
3	MG	C	401	1/1	0.08	-	40,40,40,40	0

### 6.5 Other polymers ⓘ

There are no such residues in this entry.