



wwPDB X-ray Structure Validation Summary Report

Feb 28, 2014 – 11:49 AM GMT

PDB ID : 1KBI
Title : Crystallographic Study of the Recombinant Flavin-binding Domain of Baker's Yeast Flavocytochrome b2: Comparison with the Intact Wild-type Enzyme
Authors : Cunane, L.M.; Barton, J.D.; Chen, Z.-W.; Welsh, F.E.; Chapman, S.K.; Reid, G.A.; Mathews, F.S.
Deposited on : 2001-11-06
Resolution : 2.30 Å(reported)

This is a wwPDB validation summary report for a publicly released PDB entry.
We welcome your comments at validation@mail.wwpdb.org
A user guide is available at <http://wwpdb.org/ValidationPDFNotes.html>

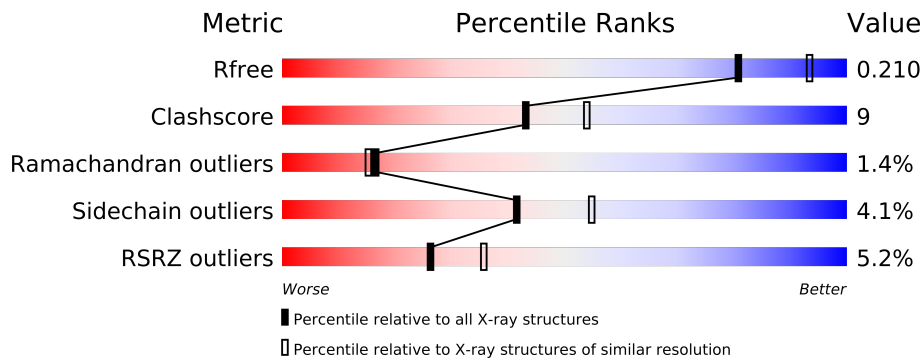
The following versions of software and data (see [references](#)) were used in the production of this report:

MolProbity : 4.02b-467
Mogul : 1.15 2013
Xtriage (Phenix) : dev-1323
EDS : stable22639
Percentile statistics : 21963
Refmac : 5.8.0049
CCP4 : 6.3.0 (Settle)
Ideal geometry (proteins) : Engh & Huber (2001)
Ideal geometry (DNA, RNA) : Parkinson et. al. (1996)
Validation Pipeline (wwPDB-VP) : stable22683

1 Overall quality at a glance

The reported resolution of this entry is 2.30 Å.

Percentile scores (ranging between 0-100) for global validation metrics of the entry are shown in the following graphic. The table shows the number of entries on which the scores are based.



Metric	Whole archive (#Entries)	Similar resolution (#Entries, resolution range(Å))
R_{free}	66092	2929 (2.30-2.30)
Clashscore	79885	3679 (2.30-2.30)
Ramachandran outliers	78287	3642 (2.30-2.30)
Sidechain outliers	78261	3641 (2.30-2.30)
RSRZ outliers	66119	2930 (2.30-2.30)

The table below summarises the geometric issues observed across the polymeric chains and their fit to the electron density. The red, orange, yellow and green segments on the lower bar indicate the fraction of residues that contain outliers for ≥ 3 , 2, 1 and 0 types of geometric quality criteria. The upper red bar (where present) indicates the fraction of residues that have poor fit to the electron density.

Mol	Chain	Length	Quality of chain
1	A	511	
1	B	511	

The following table lists non-polymeric compounds that are outliers for geometric or electron-density-fit criteria:

Mol	Type	Chain	Res	Geometry	Electron density
2	PO4	B	900	-	X
6	MPD	A	702	-	X
6	MPD	A	703	-	X
6	MPD	A	704	-	X
6	MPD	B	801	-	X

2 Entry composition

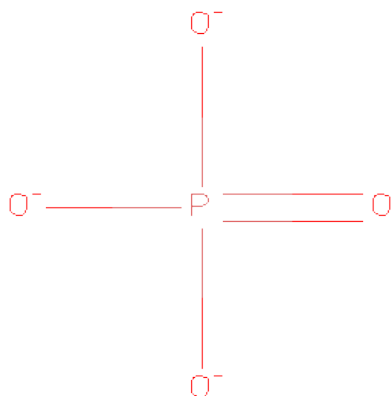
There are 7 unique types of molecules in this entry. The entry contains 7863 atoms, of which 0 are hydrogen and 0 are deuterium.

In the tables below, the ZeroOcc column contains the number of atoms modelled with zero occupancy, the AltConf column contains the number of residues with at least one atom in alternate conformation and the Trace column contains the number of residues modelled with at most 2 atoms.

- Molecule 1 is a protein called CYTOCHROME B2.

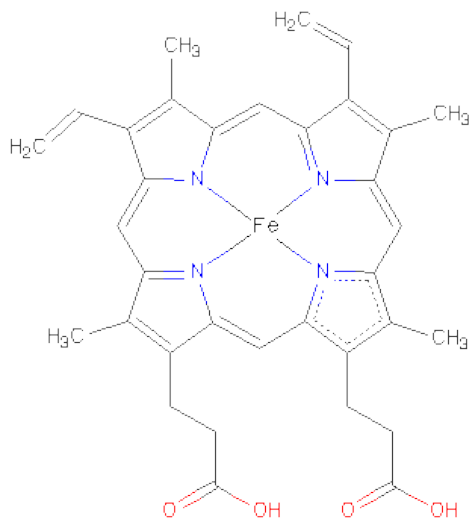
Mol	Chain	Residues	Atoms					ZeroOcc	AltConf	Trace
1	A	504	Total	C	N	O	S	0	4	0
			3939	2498	668	758	15			
1	B	405	Total	C	N	O	S	0	0	0
			3152	1994	538	609	11			

- Molecule 2 is PHOSPHATE ION (three-letter code: PO4) (formula: O₄P).



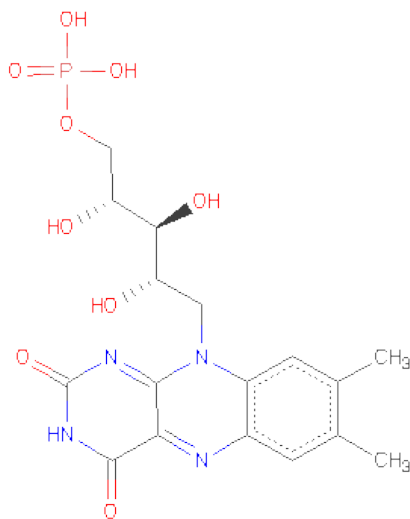
Mol	Chain	Residues	Atoms			ZeroOcc	AltConf
2	B	1	Total	O	P	0	0
			3	2	1		

- Molecule 3 is PROTOPORPHYRIN IX CONTAINING FE (three-letter code: HEM) (formula: C₃₄H₃₂FeN₄O₄).



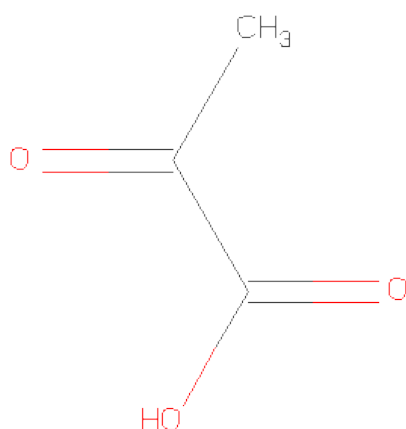
Mol	Chain	Residues	Atoms					ZeroOcc	AltConf
3	A	1	Total	C	Fe	N	O	0	0
			43	34	1	4	4		

- Molecule 4 is FLAVIN MONONUCLEOTIDE (three-letter code: FMN) (formula: $C_{17}H_{21}N_4O_9P$).



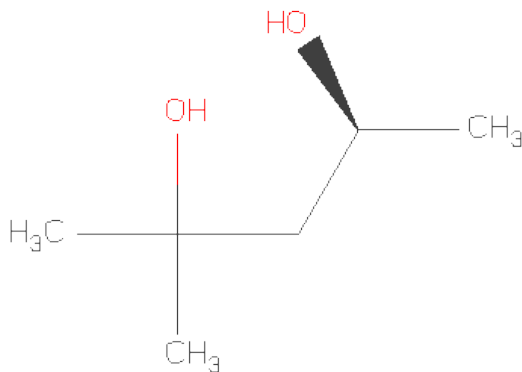
Mol	Chain	Residues	Atoms					ZeroOcc	AltConf
4	A	1	Total	C	N	O	P	0	0
			31	17	4	9	1		
4	B	1	Total	C	N	O	P	0	0
			31	17	4	9	1		

- Molecule 5 is PYRUVIC ACID (three-letter code: PYR) (formula: $C_3H_4O_3$).



Mol	Chain	Residues	Atoms			ZeroOcc	AltConf
5	B	1	Total	C	O	0	0
			6	3	3		

- Molecule 6 is (4S)-2-METHYL-2,4-PENTANEDIOL (three-letter code: MPD) (formula: $C_6H_{14}O_2$).



Mol	Chain	Residues	Atoms			ZeroOcc	AltConf
6	A	1	Total	C	O	0	0
			8	6	2		
6	A	1	Total	C	O	0	0
			8	6	2		

Continued on next page...

Continued from previous page...

Mol	Chain	Residues	Atoms			ZeroOcc	AltConf
6	A	1	Total	C	O	0	0
			8	6	2		
6	A	1	Total	C	O	0	0
			8	6	2		
6	B	1	Total	C	O	0	0
			8	6	2		

- Molecule 7 is water.

Mol	Chain	Residues	Atoms		ZeroOcc	AltConf
7	A	371	Total	O	0	0
			371	371		
7	B	247	Total	O	0	0
			247	247		

4 Data and refinement statistics

Property	Value	Source
Space group	P 32 2 1	Depositor
Cell constants a, b, c, α , β , γ	164.16Å 164.16Å 111.60Å 90.00° 90.00° 120.00°	Depositor
Resolution (Å)	30.00 – 2.30 28.16 – 2.30	Depositor EDS
% Data completeness (in resolution range)	80.5 (30.00-2.30) 80.6 (28.16-2.30)	Depositor EDS
R_{merge}	0.04	Depositor
R_{sym}	(Not available)	Depositor
$\langle I/\sigma(I) \rangle$ ¹	5.29 (at 2.31Å)	Xtriage
Refinement program	CNS	Depositor
R, R_{free}	0.170 , 0.211 0.169 , 0.210	Depositor DCC
R_{free} test set	6138 reflections (10.98%)	DCC
Wilson B-factor (Å ²)	29.4	Xtriage
Anisotropy	0.197	Xtriage
Bulk solvent k_{sol} (e/Å ³), B_{sol} (Å ²)	0.34 , 36.9	EDS
Estimated twinning fraction	0.022 for -h,-k,l	Xtriage
L-test for twinning	$\langle L \rangle = 0.49$, $\langle L^2 \rangle = 0.33$	Xtriage
Outliers	0 of 67175 reflections	Xtriage
F_o, F_c correlation	0.95	EDS
Total number of atoms	7863	wwPDB-VP
Average B, all atoms (Å ²)	36.0	wwPDB-VP

Xtriage's analysis on translational NCS is as follows: *The largest off-origin peak in the Patterson function is 2.95% of the height of the origin peak. No significant pseudotranslation is detected.*

¹Intensities estimated from amplitudes.

5 Model quality

5.1 Standard geometry

Bond lengths and bond angles in the following residue types are not validated in this section: FMN, HEM, MPD, PYR, PO4

The Z score for a bond length (or angle) is the number of standard deviations the observed value is removed from the expected value. A bond length (or angle) with $|Z| > 5$ is considered an outlier worth inspection. RMSZ is the root-mean-square of all Z scores of the bond lengths (or angles).

Mol	Chain	Bond lengths		Bond angles	
		RMSZ	$\# Z > 5$	RMSZ	$\# Z > 5$
1	A	0.52	0/4014	0.89	5/5439 (0.1%)
1	B	0.60	3/3202 (0.1%)	0.93	10/4326 (0.2%)
All	All	0.56	3/7216 (0.0%)	0.91	15/9765 (0.2%)

Chiral center outliers are detected by calculating the chiral volume of a chiral center and verifying if the center is modelled as a planar moiety or with the opposite hand. A planarity outlier is detected by checking planarity of atoms in a peptide group, atoms in a mainchain group or atoms of a sidechain that are expected to be planar.

Mol	Chain	#Chirality outliers	#Planarity outliers
1	A	0	1

All (3) bond length outliers are listed below:

Mol	Chain	Res	Type	Atoms	Z	Observed(Å)	Ideal(Å)
1	B	314	GLU	C-N	5.57	1.46	1.34
1	B	314	GLU	N-CA	5.17	1.56	1.46
1	B	311	ASN	C-N	-5.05	1.22	1.34

The worst 5 of 15 bond angle outliers are listed below:

Mol	Chain	Res	Type	Atoms	Z	Observed(°)	Ideal(°)
1	B	313	GLU	O-C-N	-23.79	84.63	122.70
1	A	310	THR	CA-C-O	-22.65	72.54	120.10
1	A	310	THR	CA-C-N	20.68	162.70	117.20
1	A	310	THR	O-C-N	-16.77	95.87	122.70
1	B	313	GLU	CA-C-N	16.26	152.97	117.20

There are no chirality outliers.

All (1) planarity outliers are listed below:

Mol	Chain	Res	Type	Group
1	A	310	THR	Mainchain

5.2 Close contacts ⓘ

In the following table, the Non-H and H(model) columns list the number of non-hydrogen atoms and hydrogen atoms in the chain respectively. The H(added) column lists the number of hydrogens added by MolProbity. The Clashes column lists the number of clashes within the asymmetric unit, and the number in parentheses is this value normalized per 1000 atoms of the molecule in the chain. The Symm-Clashes column gives symmetry related clashes, in the same way as for the Clashes column.

Mol	Chain	Non-H	H(model)	H(added)	Clashes	Symm-Clashes
1	A	3939	0	3956	81	1
1	B	3152	0	3205	46	1
2	B	3	0	0	0	2
3	A	43	0	30	8	0
4	A	31	0	19	0	0
4	B	31	0	19	1	0
5	B	6	0	3	0	0
6	A	32	0	56	3	0
6	B	8	0	14	0	0
7	A	371	0	0	6	0
7	B	247	0	0	4	0
All	All	7863	0	7302	128	3

Clashscore is defined as the number of clashes calculated for the entry per 1000 atoms (including hydrogens) of the entry. The overall clashscore for this entry is 9.

The worst 5 of 128 close contacts within the same asymmetric unit are listed below.

Atom-1	Atom-2	Distance(Å)	Clash(Å)
1:B:506:THR:HB	7:B:1098:HOH:O	1.75	0.85
1:B:270:GLU:OE2	1:B:343:LYS:HG2	1.76	0.84
1:B:317:GLY:O	1:B:320:ARG:HG2	1.82	0.80
1:A:20:ASN:H	1:A:20:ASN:HD22	1.29	0.78
1:B:186:SER:HB3	1:B:248:ILE:HD11	1.66	0.77

All (3) symmetry-related close contacts are listed below. The label for Atom-2 includes the symmetry operator and encoded unit-cell translations to be applied.

Atom-1	Atom-2	Distance(Å)	Clash(Å)
2:B:900:PO4:P	2:B:900:PO4:O1[4_555]	1.53	0.67
2:B:900:PO4:P	2:B:900:PO4:O2[4_555]	1.57	0.63

Continued on next page...

Continued from previous page...

Atom-1	Atom-2	Distance(Å)	Clash(Å)
1:A:341:LYS:O	1:B:312:VAL:CG1[3_665]	1.92	0.28

5.3 Torsion angles

5.3.1 Protein backbone ⓘ

In the following table, the Percentiles column shows the percent Ramachandran outliers of the chain as a percentile score with respect to all X-ray entries followed by that with respect to entries of similar resolution. The Analysed column shows the number of residues for which the backbone conformation was analysed, and the total number of residues.

Mol	Chain	Analysed	Favoured	Allowed	Outliers	Percentiles	
1	A	504/511 (99%)	465 (92%)	33 (6%)	6 (1%)	19	19
1	B	401/511 (78%)	378 (94%)	16 (4%)	7 (2%)	14	11
All	All	905/1022 (89%)	843 (93%)	49 (5%)	13 (1%)	16	15

5 of 13 Ramachandran outliers are listed below:

Mol	Chain	Res	Type
1	A	310	THR
1	A	400	LEU
1	B	312	VAL
1	B	313	GLU
1	B	314	GLU

5.3.2 Protein sidechains ⓘ

In the following table, the Percentiles column shows the percent sidechain outliers of the chain as a percentile score with respect to all X-ray entries followed by that with respect to entries of similar resolution. The Analysed column shows the number of residues for which the sidechain conformation was analysed, and the total number of residues.

Mol	Chain	Analysed	Rotameric	Outliers	Percentiles	
1	A	433/440 (98%)	415 (96%)	18 (4%)	40	53
1	B	348/440 (79%)	332 (95%)	16 (5%)	37	48
All	All	781/880 (89%)	747 (96%)	34 (4%)	41	51

5 of 34 residues with a non-rotameric sidechain are listed below:

Mol	Chain	Res	Type
1	A	477	LEU
1	B	111	GLN
1	B	402	ASP
1	A	492[B]	ASN
1	A	91	GLU

Some sidechains can be flipped to improve hydrogen bonding and reduce clashes. 5 of 20 such sidechains are listed below:

Mol	Chain	Res	Type
1	A	225	GLN
1	A	249	GLN
1	B	225	GLN
1	A	149	ASN
1	A	159	ASN

5.3.3 RNA ⓘ

There are no RNA chains in this entry.

5.4 Non-standard residues in protein, DNA, RNA chains ⓘ

There are no non-standard protein/DNA/RNA residues in this entry.

5.5 Carbohydrates ⓘ

There are no carbohydrates in this entry.

5.6 Ligand geometry ⓘ

10 ligands are modelled in this entry.

In the following table, the Counts columns list the number of bonds (or angles) for which Mogul statistics could be retrieved, the number of bonds (or angles) that are observed in the model and the number of bonds (or angles) that are defined in the chemical component dictionary. The Link column lists molecule types, if any, to which the group is linked. The Z score for a bond length (or angle) is the number of standard deviations the observed value is removed from the expected value. A bond length (or angle) with $|Z| > 2$ is considered an outlier worth inspection. RMSZ is the root-mean-square of all Z scores of the bond lengths (or angles).

Mol	Type	Chain	Res	Link	Bond lengths			Bond angles		
					Counts	RMSZ	# Z > 2	Counts	RMSZ	# Z > 2
6	MPD	A	701	-	7,7,7	0.46	0	10,10,10	0.52	0
6	MPD	A	702	-	7,7,7	0.43	0	10,10,10	0.51	0
6	MPD	A	703	-	7,7,7	0.47	0	10,10,10	0.54	0
6	MPD	A	704	-	7,7,7	0.54	0	10,10,10	0.55	0
3	HEM	A	760	1	49,50,50	3.43	21 (42%)	46,82,82	1.62	10 (21%)
4	FMN	A	770	-	33,33,33	1.79	7 (21%)	46,50,50	1.72	4 (8%)
5	PYR	B	800	-	5,5,5	3.88	1 (20%)	6,6,6	1.36	1 (16%)
6	MPD	B	801	-	7,7,7	0.56	0	10,10,10	0.37	0
4	FMN	B	870	-	33,33,33	1.81	7 (21%)	46,50,50	1.93	6 (13%)
2	PO4	B	900	-	0,2,4	0.00	-	0,1,6	0.00	-

In the following table, the Chirals column lists the number of chiral outliers, the number of chiral centers analysed, the number of these observed in the model and the number defined in the chemical component dictionary. Similar counts are reported in the Torsion and Rings columns. '-' means no outliers of that kind were identified.

Mol	Type	Chain	Res	Link	Chirals	Torsions	Rings
6	MPD	A	701	-	-	0/5/5/5	0/0/0/0
6	MPD	A	702	-	-	0/5/5/5	0/0/0/0
6	MPD	A	703	-	-	0/5/5/5	0/0/0/0
6	MPD	A	704	-	-	0/5/5/5	0/0/0/0
3	HEM	A	760	1	-	0/14/114/114	0/0/8/8
4	FMN	A	770	-	-	0/18/18/18	0/0/3/3
5	PYR	B	800	-	-	0/4/4/4	0/0/0/0
6	MPD	B	801	-	-	0/5/5/5	0/0/0/0
4	FMN	B	870	-	-	0/18/18/18	0/0/3/3
2	PO4	B	900	-	-	0/0/0/0	0/0/0/0

The worst 5 of 36 bond length outliers are listed below:

Mol	Chain	Res	Type	Atoms	Z	Observed(Å)	Ideal(Å)
3	A	760	HEM	C2B-C1B	13.70	1.48	1.44
3	A	760	HEM	C3D-C4D	9.32	1.46	1.44
5	B	800	PYR	C2-C1	-8.39	1.33	1.53
3	A	760	HEM	C2D-C1D	7.28	1.46	1.44
3	A	760	HEM	C4A-C3A	6.38	1.48	1.40

The worst 5 of 21 bond angle outliers are listed below:

Mol	Chain	Res	Type	Atoms	Z	Observed(°)	Ideal(°)
4	A	770	FMN	C2-N1-C10	7.98	123.02	114.98

Continued on next page...

Continued from previous page...

Mol	Chain	Res	Type	Atoms	Z	Observed(°)	Ideal(°)
4	B	870	FMN	C2-N1-C10	7.61	122.65	114.98
4	B	870	FMN	C4A-C10-N10	-7.07	116.98	120.51
4	A	770	FMN	C4A-C10-N10	-5.17	117.93	120.51
4	B	870	FMN	C4A-N5-C5A	4.53	121.78	116.69

There are no chirality outliers.

There are no torsion outliers.

There are no ring outliers.

5.7 Other polymers ⓘ

There are no such residues in this entry.

5.8 Polymer linkage issues

There are no chain breaks in this entry.

6 Fit of model and data ⓘ

6.1 Protein, DNA and RNA chains ⓘ

In the following table, the column labelled ‘#RSRZ> 2’ contains the number (and percentage) of RSRZ outliers, followed by percent RSRZ outliers for the chain as percentile scores relative to all X-ray entries and entries of similar resolution. The OWAB column contains the minimum, median, 95th percentile and maximum values of the occupancy-weighted average B-factor per residue. The column labelled ‘Q< 0.9’ lists the number of (and percentage) of residues with an average occupancy less than 0.9.

Mol	Chain	Analysed	<RSRZ>	#RSRZ>2		OWAB(Å ²)	Q<0.9
1	A	504/511 (98%)	-0.27	29 (5%)	22 31	17, 29, 83, 99	0
1	B	405/511 (79%)	-0.32	19 (4%)	30 40	17, 29, 70, 99	0
All	All	909/1022 (88%)	-0.29	48 (5%)	26 35	17, 29, 80, 99	0

The worst 5 of 48 RSRZ outliers are listed below:

Mol	Chain	Res	Type	RSRZ
1	B	310	THR	11.0
1	B	311	ASN	8.7
1	A	311	ASN	8.2
1	B	312	VAL	7.6
1	A	310	THR	7.6

6.2 Non-standard residues in protein, DNA, RNA chains ⓘ

There are no non-standard protein/DNA/RNA residues in this entry.

6.3 Carbohydrates ⓘ

There are no carbohydrates in this entry.

6.4 Ligands ⓘ

In the following table, the Atoms column lists the number of modelled atoms in the group and the number defined in the chemical component dictionary. LLDF column lists the quality of electron density of the group with respect to its neighbouring residues in protein, DNA or RNA chains. The B-factors column lists the minimum, median, 95th percentile and maximum values of B factors of atoms in the group. The column labelled ‘Q< 0.9’ lists the number of atoms with occupancy less than 0.9.

Mol	Type	Chain	Res	Atoms	RSR	LLDF	B-factors(\AA^2)	Q<0.9
6	MPD	A	703	8/8	0.43	27.22	91,91,92,92	0
2	PO4	B	900	3/5	0.23	14.25	65,65,68,72	1
6	MPD	A	702	8/8	0.24	12.89	80,82,84,84	0
6	MPD	A	704	8/8	0.26	5.42	96,96,99,99	0
6	MPD	B	801	8/8	0.22	2.67	70,72,72,73	0
5	PYR	B	800	6/6	0.12	1.61	41,45,51,52	0
6	MPD	A	701	8/8	0.12	1.01	39,43,52,54	0
4	FMN	B	870	31/31	0.11	0.35	18,23,27,29	0
4	FMN	A	770	31/31	0.11	-0.46	15,19,24,26	0
3	HEM	A	760	43/43	0.09	-1.00	21,28,34,39	0

6.5 Other polymers ⓘ

There are no such residues in this entry.