



Full wwPDB X-ray Structure Validation Report

Feb 28, 2014 – 05:20 AM GMT

PDB ID : 3KBC
Title : Crystal structure of GltPh K55C-A364C mutant crosslinked with divalent mercury
Authors : Reyes, N.; Ginter, C.; Boudker, O.
Deposited on : 2009-10-20
Resolution : 3.51 Å(reported)

This is a full wwPDB validation report for a publicly released PDB entry.
We welcome your comments at validation@mail.wwpdb.org
A user guide is available at <http://wwpdb.org/ValidationPDFNotes.html>

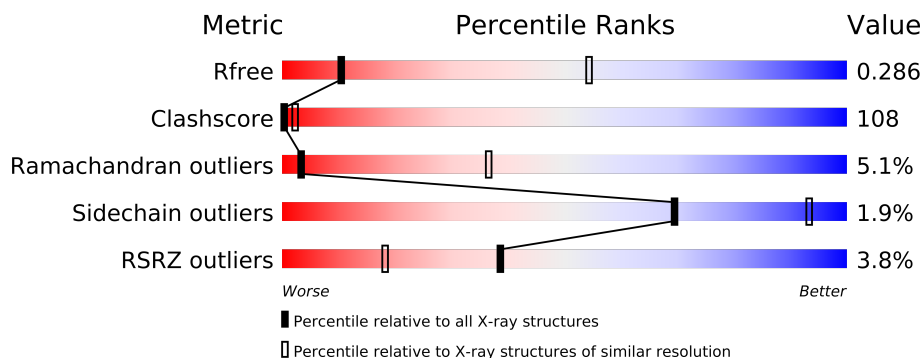
The following versions of software and data (see [references](#)) were used in the production of this report:

MolProbity : 4.02b-467
Mogul : 1.15 2013
Xtriage (Phenix) : dev-1323
EDS : stable22639
Percentile statistics : 21963
Refmac : 5.8.0049
CCP4 : 6.3.0 (Settle)
Ideal geometry (proteins) : Engh & Huber (2001)
Ideal geometry (DNA, RNA) : Parkinson et. al. (1996)
Validation Pipeline (wwPDB-VP) : stable22683

1 Overall quality at a glance

The reported resolution of this entry is 3.51 Å.

Percentile scores (ranging between 0-100) for global validation metrics of the entry are shown in the following graphic. The table shows the number of entries on which the scores are based.



Metric	Whole archive (#Entries)	Similar resolution (#Entries, resolution range(Å))
R_{free}	66092	1256 (3.74-3.30)
Clashscore	79885	1020 (3.68-3.36)
Ramachandran outliers	78287	1082 (3.70-3.34)
Sidechain outliers	78261	1082 (3.70-3.34)
RSRZ outliers	66119	1256 (3.74-3.30)

The table below summarises the geometric issues observed across the polymeric chains and their fit to the electron density. The red, orange, yellow and green segments on the lower bar indicate the fraction of residues that contain outliers for ≥ 3 , 2, 1 and 0 types of geometric quality criteria. The upper red bar (where present) indicates the fraction of residues that have poor fit to the electron density.

Mol	Chain	Length	Quality of chain
1	A	425	
1	B	425	
1	C	425	

2 Entry composition

There are 4 unique types of molecules in this entry. The entry contains 9096 atoms, of which 0 are hydrogen and 0 are deuterium.

In the tables below, the ZeroOcc column contains the number of atoms modelled with zero occupancy, the AltConf column contains the number of residues with at least one atom in alternate conformation and the Trace column contains the number of residues modelled with at most 2 atoms.

- Molecule 1 is a protein called 425aa long hypothetical proton glutamate symport protein.

Mol	Chain	Residues	Atoms					ZeroOcc	AltConf	Trace
1	A	411	Total	C	N	O	S	0	0	0
			3020	1989	483	530	18			
1	B	411	Total	C	N	O	S	0	0	0
			3020	1989	483	530	18			
1	C	411	Total	C	N	O	S	0	0	0
			3020	1989	483	530	18			

There are 30 discrepancies between the modelled and reference sequences:

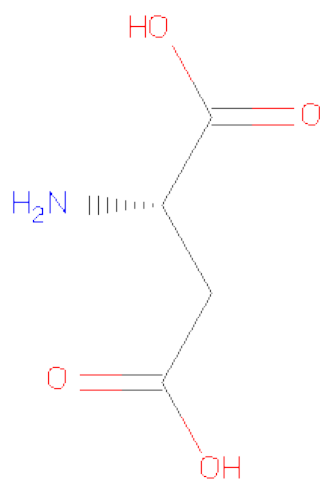
Chain	Residue	Modelled	Actual	Comment	Reference
A	37	HIS	ASP	ENGINEERED	UNP O59010
A	40	HIS	LYS	ENGINEERED	UNP O59010
A	55	CYS	LYS	ENGINEERED	UNP O59010
A	125	HIS	LYS	ENGINEERED	UNP O59010
A	132	HIS	LYS	ENGINEERED	UNP O59010
A	223	HIS	LYS	ENGINEERED	UNP O59010
A	264	HIS	LYS	ENGINEERED	UNP O59010
A	321	ALA	CYS	ENGINEERED	UNP O59010
A	364	CYS	ALA	ENGINEERED	UNP O59010
A	368	HIS	GLU	ENGINEERED	UNP O59010
B	37	HIS	ASP	ENGINEERED	UNP O59010
B	40	HIS	LYS	ENGINEERED	UNP O59010
B	55	CYS	LYS	ENGINEERED	UNP O59010
B	125	HIS	LYS	ENGINEERED	UNP O59010
B	132	HIS	LYS	ENGINEERED	UNP O59010
B	223	HIS	LYS	ENGINEERED	UNP O59010
B	264	HIS	LYS	ENGINEERED	UNP O59010
B	321	ALA	CYS	ENGINEERED	UNP O59010
B	364	CYS	ALA	ENGINEERED	UNP O59010
B	368	HIS	GLU	ENGINEERED	UNP O59010
C	37	HIS	ASP	ENGINEERED	UNP O59010
C	40	HIS	LYS	ENGINEERED	UNP O59010
C	55	CYS	LYS	ENGINEERED	UNP O59010

Continued on next page...

Continued from previous page...

Chain	Residue	Modelled	Actual	Comment	Reference
C	125	HIS	LYS	ENGINEERED	UNP O59010
C	132	HIS	LYS	ENGINEERED	UNP O59010
C	223	HIS	LYS	ENGINEERED	UNP O59010
C	264	HIS	LYS	ENGINEERED	UNP O59010
C	321	ALA	CYS	ENGINEERED	UNP O59010
C	364	CYS	ALA	ENGINEERED	UNP O59010
C	368	HIS	GLU	ENGINEERED	UNP O59010

- Molecule 2 is ASPARTIC ACID (three-letter code: ASP) (formula: $C_4H_7NO_4$).



Mol	Chain	Residues	Atoms				ZeroOcc	AltConf
2	A	1	Total	C	N	O	0	0
			9	4	1	4		
2	B	1	Total	C	N	O	0	0
			9	4	1	4		
2	C	1	Total	C	N	O	0	0
			9	4	1	4		

- Molecule 3 is MERCURY (II) ION (three-letter code: HG) (formula: Hg).

Mol	Chain	Residues	Atoms		ZeroOcc	AltConf
3	B	1	Total	Hg	0	0
			1	1		
3	A	1	Total	Hg	0	0
			1	1		

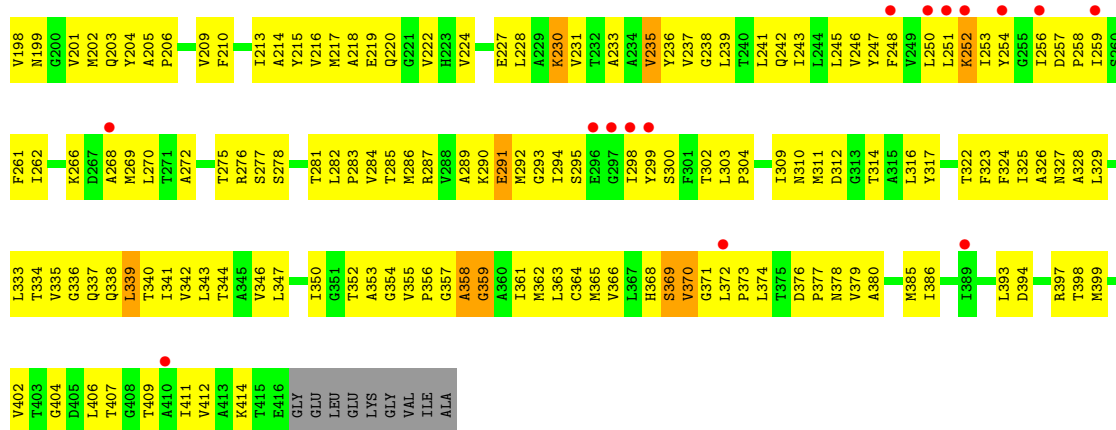
Continued on next page...

Continued from previous page...

Mol	Chain	Residues	Atoms		ZeroOcc	AltConf
3	C	1	Total	Hg	0	0
			1	1		

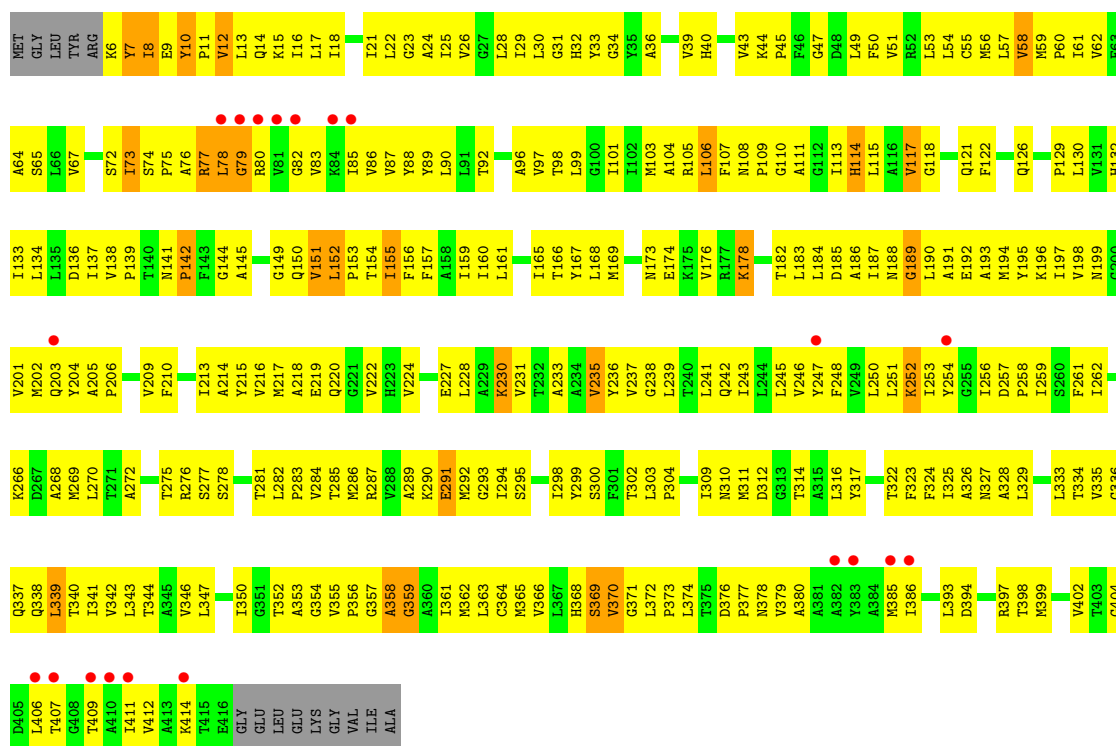
- Molecule 4 is SODIUM ION (three-letter code: NA) (formula: Na).

Mol	Chain	Residues	Atoms		ZeroOcc	AltConf
4	B	2	Total	Na	0	0
			2	2		
4	A	2	Total	Na	0	0
			2	2		
4	C	2	Total	Na	0	0
			2	2		



• Molecule 1: 425aa long hypothetical proton glutamate symport protein

Chain C:



4 Data and refinement statistics

Property	Value	Source
Space group	C 2 2 21	Depositor
Cell constants a, b, c, α , β , γ	113.14Å 206.78Å 205.97Å 90.00° 90.00° 90.00°	Depositor
Resolution (Å)	12.00 – 3.51 38.84 – 3.51	Depositor EDS
% Data completeness (in resolution range)	97.2 (12.00-3.51) 97.2 (38.84-3.51)	Depositor EDS
R_{merge}	0.12	Depositor
R_{sym}	(Not available)	Depositor
$\langle I/\sigma(I) \rangle$ ¹	1.48 (at 3.48Å)	Xtriage
Refinement program	REFMAC 5.5.0066	Depositor
R, R_{free}	0.267 , 0.270 0.271 , 0.286	Depositor DCC
R_{free} test set	1502 reflections (5.06%)	DCC
Wilson B-factor (Å ²)	139.8	Xtriage
Anisotropy	0.412	Xtriage
Bulk solvent k_{sol} (e/Å ³), B_{sol} (Å ²)	0.24 , 99.0	EDS
Estimated twinning fraction	0.073 for 1/2*h-1/2*k,-3/2*h-1/2*k,-l 0.088 for 1/2*h+1/2*k,3/2*h-1/2*k,-l	Xtriage
L-test for twinning	$\langle L \rangle = 0.40$, $\langle L^2 \rangle = 0.23$	Xtriage
Outliers	1 of 29760 reflections (0.003%)	Xtriage
F_o, F_c correlation	0.87	EDS
Total number of atoms	9096	wwPDB-VP
Average B, all atoms (Å ²)	100.0	wwPDB-VP

Xtriage's analysis on translational NCS is as follows: *The largest off-origin peak in the Patterson function is 2.94% of the height of the origin peak. No significant pseudotranslation is detected.*

¹Intensities estimated from amplitudes.

5 Model quality

5.1 Standard geometry

Bond lengths and bond angles in the following residue types are not validated in this section: NA, HG

The Z score for a bond length (or angle) is the number of standard deviations the observed value is removed from the expected value. A bond length (or angle) with $|Z| > 5$ is considered an outlier worth inspection. RMSZ is the root-mean-square of all Z scores of the bond lengths (or angles).

Mol	Chain	Bond lengths		Bond angles	
		RMSZ	# Z >5	RMSZ	# Z >5
1	A	0.51	0/3078	0.64	2/4202 (0.0%)
1	B	0.50	0/3078	0.64	2/4202 (0.0%)
1	C	0.48	0/3078	0.63	2/4202 (0.0%)
All	All	0.50	0/9234	0.63	6/12606 (0.0%)

There are no bond length outliers.

All (6) bond angle outliers are listed below:

Mol	Chain	Res	Type	Atoms	Z	Observed(°)	Ideal(°)
1	A	369	SER	N-CA-C	-5.14	97.13	111.00
1	A	189	GLY	N-CA-C	-5.10	100.36	113.10
1	B	189	GLY	N-CA-C	-5.09	100.37	113.10
1	C	369	SER	N-CA-C	-5.09	97.25	111.00
1	B	369	SER	N-CA-C	-5.07	97.32	111.00
1	C	189	GLY	N-CA-C	-5.03	100.53	113.10

There are no chirality outliers.

There are no planarity outliers.

5.2 Close contacts

In the following table, the Non-H and H(model) columns list the number of non-hydrogen atoms and hydrogen atoms in the chain respectively. The H(added) column lists the number of hydrogens added by MolProbity. The Clashes column lists the number of clashes within the asymmetric unit, and the number in parentheses is this value normalized per 1000 atoms of the molecule in the chain. The Symm-Clashes column gives symmetry related clashes, in the same way as for the Clashes column.

Mol	Chain	Non-H	H(model)	H(added)	Clashes	Symm-Clashes
1	A	3020	0	3181	703	2
1	B	3020	0	3181	684	2
1	C	3020	0	3181	683	2
2	A	9	0	3	5	0
2	B	9	0	3	5	0
2	C	9	0	3	5	0
3	A	1	0	0	2	0
3	B	1	0	0	2	0
3	C	1	0	0	1	0
4	A	2	0	0	0	0
4	B	2	0	0	0	0
4	C	2	0	0	0	0
All	All	9096	0	9552	2022	4

Clashscore is defined as the number of clashes calculated for the entry per 1000 atoms (including hydrogens) of the entry. The overall clashscore for this entry is 108.

All (2022) close contacts within the same asymmetric unit are listed below.

Atom-1	Atom-2	Distance(Å)	Clash(Å)
1:C:106:LEU:HD11	1:C:107:PHE:CD1	1.33	1.64
1:A:106:LEU:HD11	1:A:107:PHE:CD1	1.33	1.61
1:B:106:LEU:HD11	1:B:107:PHE:CD1	1.33	1.59
1:B:195:TYR:CE1	1:B:353:ALA:HB2	1.38	1.57
1:C:195:TYR:CE1	1:C:353:ALA:HB2	1.39	1.54
1:A:195:TYR:CE1	1:A:353:ALA:HB2	1.42	1.53
1:A:106:LEU:CD1	1:A:107:PHE:CD1	2.00	1.44
1:C:36:ALA:CB	1:C:218:ALA:HB1	1.47	1.43
1:B:106:LEU:CD1	1:B:107:PHE:CD1	1.99	1.43
1:C:355:VAL:CG1	1:C:356:PRO:HD2	1.50	1.42
1:C:106:LEU:CD1	1:C:107:PHE:CD1	2.00	1.41
1:C:89:TYR:HD1	1:C:310:ASN:CB	1.33	1.41
1:B:36:ALA:CB	1:B:218:ALA:HB1	1.48	1.40
1:A:36:ALA:CB	1:A:218:ALA:HB1	1.48	1.40
1:A:89:TYR:HD1	1:A:310:ASN:CB	1.34	1.39
1:B:355:VAL:CG1	1:B:356:PRO:HD2	1.50	1.39
1:A:355:VAL:CG1	1:A:356:PRO:HD2	1.52	1.38
1:C:89:TYR:CD1	1:C:310:ASN:CB	2.07	1.37
1:B:89:TYR:HD1	1:B:310:ASN:CB	1.35	1.37
1:A:89:TYR:CD1	1:A:310:ASN:CB	2.08	1.34
1:A:245:LEU:O	1:A:245:LEU:HD23	1.25	1.33
1:B:245:LEU:O	1:B:245:LEU:HD23	1.24	1.33
1:B:89:TYR:CD1	1:B:310:ASN:CB	2.09	1.33
1:B:89:TYR:CD1	1:B:310:ASN:HB2	1.64	1.32

Continued on next page...

Continued from previous page...

Atom-1	Atom-2	Distance(Å)	Clash(Å)
1:B:266:LYS:O	1:B:270:LEU:HD23	1.27	1.32
1:C:89:TYR:CD1	1:C:310:ASN:ND2	1.98	1.31
1:A:89:TYR:CD1	1:A:310:ASN:ND2	1.97	1.30
1:B:89:TYR:CD1	1:B:310:ASN:ND2	1.99	1.30
1:B:26:VAL:O	1:B:30:LEU:HD13	1.21	1.30
1:C:26:VAL:O	1:C:30:LEU:HD13	1.20	1.29
1:C:89:TYR:CD1	1:C:310:ASN:HB2	1.62	1.29
1:A:89:TYR:CD1	1:A:310:ASN:HB2	1.64	1.28
1:A:26:VAL:O	1:A:30:LEU:HD13	1.22	1.27
1:B:195:TYR:CE1	1:B:353:ALA:CB	2.17	1.27
1:C:245:LEU:O	1:C:245:LEU:HD23	1.24	1.27
1:C:195:TYR:CE1	1:C:353:ALA:CB	2.18	1.27
1:A:266:LYS:O	1:A:270:LEU:HD23	1.27	1.27
1:C:266:LYS:O	1:C:270:LEU:HD23	1.26	1.25
1:A:195:TYR:CE1	1:A:353:ALA:CB	2.20	1.24
1:B:151:VAL:CG1	1:B:155:ILE:HD11	1.68	1.24
1:A:252:LYS:O	1:A:252:LYS:HD3	1.39	1.23
1:C:151:VAL:CG1	1:C:155:ILE:HD11	1.67	1.23
1:A:89:TYR:HD1	1:A:310:ASN:CG	1.42	1.23
1:B:252:LYS:HD3	1:B:252:LYS:O	1.38	1.23
1:A:151:VAL:CG1	1:A:155:ILE:HD11	1.68	1.22
1:B:106:LEU:HD12	1:B:107:PHE:N	1.55	1.22
1:B:110:GLY:O	1:B:113:ILE:HG22	1.37	1.22
1:C:106:LEU:HD12	1:C:107:PHE:N	1.54	1.21
1:C:89:TYR:HD1	1:C:310:ASN:CG	1.42	1.21
1:A:106:LEU:HD11	1:A:107:PHE:CE1	1.76	1.21
1:C:106:LEU:HD11	1:C:107:PHE:CE1	1.76	1.20
1:C:110:GLY:O	1:C:113:ILE:HG22	1.38	1.20
1:C:252:LYS:HD3	1:C:252:LYS:O	1.39	1.20
1:B:21:ILE:O	1:B:25:ILE:HD13	1.41	1.20
1:A:106:LEU:HD12	1:A:107:PHE:N	1.54	1.20
1:B:106:LEU:HD11	1:B:107:PHE:CE1	1.74	1.20
1:A:407:THR:O	1:A:411:ILE:HD13	1.39	1.20
1:C:407:THR:O	1:C:411:ILE:HD13	1.39	1.19
1:B:103:MET:CE	1:B:237:VAL:HG23	1.71	1.19
1:B:89:TYR:HD1	1:B:310:ASN:CG	1.43	1.19
1:B:407:THR:O	1:B:411:ILE:HD13	1.39	1.19
1:C:21:ILE:O	1:C:25:ILE:HD13	1.43	1.19
1:A:110:GLY:O	1:A:113:ILE:HG22	1.39	1.18
1:A:55:CYS:O	1:A:58:VAL:HG12	1.42	1.18
1:A:103:MET:CE	1:A:237:VAL:HG23	1.72	1.18
1:C:196:LYS:HE2	1:C:196:LYS:HA	1.21	1.17

Continued on next page...

Continued from previous page...

Atom-1	Atom-2	Distance(Å)	Clash(Å)
1:C:103:MET:CE	1:C:237:VAL:HG23	1.72	1.17
1:C:326:ALA:CB	1:C:333:LEU:HD11	1.75	1.17
1:C:55:CYS:O	1:C:58:VAL:HG12	1.42	1.16
1:B:55:CYS:O	1:B:58:VAL:HG12	1.43	1.16
1:C:156:PHE:O	1:C:160:ILE:HD13	1.45	1.16
1:B:213:ILE:HD12	1:B:214:ALA:N	1.59	1.15
1:A:21:ILE:O	1:A:25:ILE:HD13	1.42	1.15
1:B:326:ALA:CB	1:B:333:LEU:HD11	1.77	1.15
1:A:213:ILE:HD12	1:A:214:ALA:N	1.60	1.15
1:B:103:MET:HE2	1:B:237:VAL:HG23	1.26	1.15
1:A:85:ILE:HG13	1:A:89:TYR:CE2	1.81	1.15
1:B:85:ILE:HG13	1:B:89:TYR:CE2	1.82	1.15
1:B:29:ILE:HG13	1:B:30:LEU:HD12	1.19	1.15
1:C:243:ILE:HA	1:C:247:TYR:HD2	1.05	1.14
1:C:85:ILE:HG13	1:C:89:TYR:HE2	1.12	1.14
1:C:213:ILE:HD12	1:C:214:ALA:N	1.60	1.14
1:A:326:ALA:CB	1:A:333:LEU:HD11	1.77	1.14
1:C:24:ALA:O	1:C:28:LEU:HD23	1.47	1.14
1:A:156:PHE:O	1:A:160:ILE:HD13	1.46	1.14
1:A:243:ILE:HA	1:A:247:TYR:HD2	1.05	1.13
1:C:85:ILE:HG13	1:C:89:TYR:CE2	1.82	1.12
1:C:58:VAL:O	1:C:62:VAL:HG23	1.49	1.12
1:C:29:ILE:HG13	1:C:30:LEU:HD12	1.19	1.11
1:B:156:PHE:O	1:B:160:ILE:HD13	1.48	1.11
1:B:196:LYS:HA	1:B:196:LYS:HE2	1.19	1.11
1:B:85:ILE:HG13	1:B:89:TYR:HE2	1.12	1.11
1:C:227:GLU:O	1:C:231:VAL:HG23	1.50	1.10
1:A:24:ALA:O	1:A:28:LEU:HD23	1.47	1.10
1:A:196:LYS:HA	1:A:196:LYS:HE2	1.20	1.10
1:B:227:GLU:O	1:B:231:VAL:HG23	1.50	1.10
1:B:24:ALA:O	1:B:28:LEU:HD23	1.47	1.10
1:C:355:VAL:CG1	1:C:356:PRO:CD	2.30	1.09
1:B:243:ILE:HA	1:B:247:TYR:HD2	1.05	1.09
1:B:355:VAL:CG1	1:B:356:PRO:CD	2.31	1.09
1:A:227:GLU:O	1:A:231:VAL:HG23	1.51	1.08
1:A:29:ILE:HG13	1:A:30:LEU:HD12	1.19	1.08
1:B:56:MET:CE	1:C:157:PHE:HD1	1.66	1.08
1:B:24:ALA:O	1:B:28:LEU:CD2	2.01	1.08
1:B:355:VAL:HG13	1:B:356:PRO:HD2	1.08	1.08
1:C:24:ALA:O	1:C:28:LEU:CD2	2.01	1.08
1:A:103:MET:HE2	1:A:237:VAL:HG23	1.21	1.08
1:A:248:PHE:CD2	1:A:258:PRO:HB2	1.89	1.08

Continued on next page...

Continued from previous page...

Atom-1	Atom-2	Distance(Å)	Clash(Å)
1:A:352:THR:CG2	1:A:358:ALA:HB1	1.84	1.07
1:A:58:VAL:O	1:A:62:VAL:HG23	1.51	1.07
1:B:58:VAL:O	1:B:62:VAL:HG23	1.52	1.07
1:B:248:PHE:CD2	1:B:258:PRO:HB2	1.89	1.07
1:C:248:PHE:CD2	1:C:258:PRO:HB2	1.89	1.07
1:A:355:VAL:CG1	1:A:356:PRO:CD	2.32	1.07
1:C:103:MET:HE2	1:C:237:VAL:HG23	1.20	1.07
1:C:355:VAL:HG12	1:C:356:PRO:CD	1.84	1.07
1:A:352:THR:HG23	1:A:358:ALA:HB1	1.36	1.07
1:A:24:ALA:O	1:A:28:LEU:CD2	2.02	1.07
1:C:243:ILE:HA	1:C:247:TYR:CD2	1.90	1.07
1:B:355:VAL:HG12	1:B:356:PRO:CD	1.84	1.06
1:A:355:VAL:HG12	1:A:356:PRO:CD	1.85	1.06
1:B:230:LYS:O	1:B:230:LYS:HD3	1.56	1.05
1:C:352:THR:CG2	1:C:358:ALA:HB1	1.85	1.05
1:A:243:ILE:HA	1:A:247:TYR:CD2	1.90	1.05
1:C:151:VAL:HG13	1:C:155:ILE:HD11	1.33	1.05
1:B:352:THR:CG2	1:B:358:ALA:HB1	1.86	1.05
1:A:10:TYR:HB3	1:A:11:PRO:HD2	1.38	1.05
1:B:151:VAL:HG13	1:B:155:ILE:HD11	1.36	1.05
1:B:243:ILE:HA	1:B:247:TYR:CD2	1.90	1.05
1:B:117:VAL:HG23	1:B:118:GLY:H	1.19	1.05
1:B:57:LEU:HD22	1:B:194:MET:HE3	1.38	1.04
1:A:355:VAL:HG13	1:A:356:PRO:HD2	1.10	1.04
1:A:230:LYS:HD3	1:A:230:LYS:O	1.57	1.04
1:B:36:ALA:CB	1:B:218:ALA:CB	2.35	1.04
1:B:352:THR:HG23	1:B:358:ALA:HB1	1.39	1.04
1:B:10:TYR:HB3	1:B:11:PRO:HD2	1.39	1.04
1:C:355:VAL:HG13	1:C:356:PRO:HD2	1.07	1.04
1:C:36:ALA:CB	1:C:218:ALA:CB	2.35	1.03
1:A:36:ALA:CB	1:A:218:ALA:CB	2.35	1.03
1:A:151:VAL:HG13	1:A:155:ILE:HD11	1.36	1.03
1:B:333:LEU:HA	1:B:337:GLN:NE2	1.74	1.02
1:B:247:TYR:HE1	1:B:404:GLY:HA2	1.22	1.02
1:C:230:LYS:O	1:C:230:LYS:HD3	1.57	1.02
1:A:333:LEU:HA	1:A:337:GLN:NE2	1.74	1.02
1:C:352:THR:HG23	1:C:358:ALA:HB1	1.39	1.02
1:A:247:TYR:HE1	1:A:404:GLY:HA2	1.24	1.02
1:A:85:ILE:HG13	1:A:89:TYR:HE2	1.11	1.02
1:C:247:TYR:HE1	1:C:404:GLY:HA2	1.23	1.01
1:B:36:ALA:HB2	1:B:218:ALA:CB	1.91	1.01
1:B:105:ARG:NH2	1:B:338:GLN:HE22	1.57	1.01

Continued on next page...

Continued from previous page...

Atom-1	Atom-2	Distance(Å)	Clash(Å)
1:A:105:ARG:NH2	1:A:338:GLN:HE22	1.59	1.01
1:C:105:ARG:NH2	1:C:338:GLN:HE22	1.59	1.01
1:C:326:ALA:HB1	1:C:333:LEU:HD11	1.39	1.01
1:C:333:LEU:HA	1:C:337:GLN:NE2	1.74	1.01
1:A:152:LEU:H	1:A:152:LEU:HD12	1.24	1.01
1:B:290:LYS:O	1:B:292:MET:N	1.94	1.01
1:A:117:VAL:HG23	1:A:118:GLY:H	1.20	1.01
1:C:57:LEU:HD22	1:C:194:MET:HE3	1.38	1.01
1:C:10:TYR:HB3	1:C:11:PRO:HD2	1.39	1.01
1:B:195:TYR:CD1	1:B:353:ALA:CB	2.43	1.00
1:C:28:LEU:O	1:C:31:GLY:N	1.94	1.00
1:A:21:ILE:O	1:A:25:ILE:CD1	2.10	1.00
1:B:152:LEU:HD12	1:B:152:LEU:H	1.23	1.00
1:C:195:TYR:CD1	1:C:353:ALA:CB	2.43	1.00
1:C:290:LYS:O	1:C:292:MET:N	1.94	1.00
1:A:195:TYR:CD1	1:A:353:ALA:CB	2.45	1.00
1:B:355:VAL:HG12	1:B:356:PRO:HD2	1.42	1.00
1:B:28:LEU:O	1:B:31:GLY:N	1.93	1.00
1:B:21:ILE:O	1:B:25:ILE:CD1	2.09	1.00
1:A:28:LEU:O	1:A:31:GLY:N	1.95	0.99
1:C:117:VAL:HG23	1:C:118:GLY:H	1.19	0.99
1:A:130:LEU:O	1:A:133:ILE:HG22	1.62	0.99
1:B:326:ALA:HB1	1:B:333:LEU:HD11	1.41	0.99
1:C:36:ALA:HB2	1:C:218:ALA:CB	1.90	0.99
1:A:57:LEU:HD22	1:A:194:MET:HE3	1.45	0.99
1:B:151:VAL:HG12	1:B:155:ILE:HD11	1.45	0.99
1:A:290:LYS:O	1:A:292:MET:N	1.95	0.99
1:C:6:LYS:O	1:C:7:TYR:HD2	1.46	0.98
1:C:6:LYS:O	1:C:7:TYR:CD2	2.17	0.98
1:A:326:ALA:HB1	1:A:333:LEU:HD11	1.40	0.98
1:A:151:VAL:HG12	1:A:155:ILE:CD1	1.94	0.98
1:B:6:LYS:O	1:B:7:TYR:HD2	1.46	0.98
1:C:151:VAL:HG12	1:C:155:ILE:CD1	1.94	0.97
1:B:6:LYS:O	1:B:7:TYR:CD2	2.17	0.97
1:A:23:GLY:HA3	1:A:213:ILE:HD11	1.46	0.97
1:A:36:ALA:HB2	1:A:218:ALA:CB	1.90	0.97
1:C:152:LEU:H	1:C:152:LEU:HD12	1.25	0.97
1:B:106:LEU:HD11	1:B:107:PHE:HD1	1.23	0.97
1:B:239:LEU:HD23	1:B:316:LEU:HD13	1.46	0.97
1:B:23:GLY:HA3	1:B:213:ILE:HD11	1.47	0.97
1:C:21:ILE:O	1:C:25:ILE:CD1	2.11	0.97
1:B:151:VAL:HG12	1:B:155:ILE:CD1	1.94	0.97

Continued on next page...

Continued from previous page...

Atom-1	Atom-2	Distance(Å)	Clash(Å)
1:C:246:VAL:O	1:C:250:LEU:HG	1.65	0.97
1:A:6:LYS:O	1:A:7:TYR:CD2	2.17	0.97
1:B:36:ALA:HB2	1:B:218:ALA:HB1	0.97	0.97
1:A:151:VAL:HG12	1:A:155:ILE:HD11	1.43	0.97
1:B:130:LEU:O	1:B:133:ILE:HG22	1.64	0.97
1:B:105:ARG:HH21	1:B:338:GLN:NE2	1.62	0.96
1:C:333:LEU:HA	1:C:337:GLN:HE21	1.31	0.96
1:C:105:ARG:HH21	1:C:338:GLN:NE2	1.63	0.96
1:C:26:VAL:O	1:C:30:LEU:CD1	2.12	0.96
1:A:6:LYS:O	1:A:7:TYR:HD2	1.46	0.96
1:A:239:LEU:HD23	1:A:316:LEU:HD13	1.47	0.96
1:B:246:VAL:O	1:B:250:LEU:HG	1.66	0.96
1:C:151:VAL:HG12	1:C:155:ILE:HD11	1.44	0.95
1:C:36:ALA:HB2	1:C:218:ALA:HB1	0.97	0.95
1:C:130:LEU:O	1:C:133:ILE:HG22	1.64	0.95
1:C:364:CYS:SG	3:C:501:HG:HG	1.84	0.95
1:A:106:LEU:HD12	1:A:107:PHE:H	1.29	0.95
1:A:105:ARG:HH21	1:A:338:GLN:NE2	1.63	0.95
1:A:61:ILE:O	1:A:65:SER:HB3	1.65	0.95
1:A:36:ALA:HB2	1:A:218:ALA:HB1	0.97	0.95
1:A:6:LYS:O	1:A:7:TYR:HB2	1.66	0.95
1:B:325:ILE:O	1:B:329:LEU:HD13	1.67	0.95
1:C:61:ILE:O	1:C:65:SER:HB3	1.64	0.95
1:B:106:LEU:HD12	1:B:107:PHE:H	1.29	0.95
1:C:23:GLY:HA3	1:C:213:ILE:HD11	1.46	0.95
1:A:246:VAL:O	1:A:250:LEU:HG	1.67	0.95
1:A:56:MET:CE	1:B:157:PHE:HD1	1.79	0.95
1:B:36:ALA:HB1	1:B:218:ALA:HB1	1.44	0.94
1:C:6:LYS:O	1:C:7:TYR:HB2	1.66	0.94
1:B:295:SER:HB3	1:B:298:ILE:HD13	1.50	0.94
1:A:26:VAL:O	1:A:30:LEU:CD1	2.15	0.94
1:C:325:ILE:O	1:C:329:LEU:HD13	1.66	0.94
1:C:36:ALA:HB1	1:C:218:ALA:HB1	1.44	0.94
1:B:56:MET:HE1	1:C:157:PHE:HD1	1.31	0.94
1:C:239:LEU:HD23	1:C:316:LEU:HD13	1.46	0.94
1:A:56:MET:HE3	1:B:157:PHE:HD1	1.33	0.94
1:A:57:LEU:CD2	1:A:194:MET:HE3	1.98	0.94
1:B:89:TYR:HD1	1:B:310:ASN:ND2	1.52	0.94
1:B:26:VAL:O	1:B:30:LEU:CD1	2.14	0.94
1:A:364:CYS:SG	3:A:501:HG:HG	1.86	0.94
1:C:295:SER:HB3	1:C:298:ILE:HD13	1.49	0.94
1:B:251:LEU:HD21	1:B:407:THR:HG23	1.49	0.94

Continued on next page...

Continued from previous page...

Atom-1	Atom-2	Distance(Å)	Clash(Å)
1:C:233:ALA:O	1:C:237:VAL:HG22	1.68	0.94
1:B:333:LEU:HA	1:B:337:GLN:HE21	1.30	0.93
1:A:107:PHE:HB3	1:A:230:LYS:HE2	1.50	0.93
1:B:6:LYS:O	1:B:7:TYR:HB2	1.67	0.93
1:C:191:ALA:O	1:C:195:TYR:CD2	2.22	0.93
1:A:36:ALA:HB1	1:A:218:ALA:HB1	1.45	0.93
1:B:107:PHE:HB3	1:B:230:LYS:HE2	1.50	0.93
1:B:110:GLY:C	1:B:113:ILE:HG22	1.86	0.93
1:A:325:ILE:O	1:A:329:LEU:HD13	1.69	0.93
1:C:151:VAL:CG1	1:C:155:ILE:CD1	2.46	0.93
1:A:339:LEU:O	1:A:342:VAL:HG12	1.68	0.93
1:B:61:ILE:O	1:B:65:SER:HB3	1.69	0.93
1:B:339:LEU:O	1:B:342:VAL:HG12	1.68	0.93
1:C:155:ILE:HD12	1:C:155:ILE:H	1.34	0.92
1:C:106:LEU:HD11	1:C:107:PHE:HD1	1.23	0.92
1:A:106:LEU:HD11	1:A:107:PHE:HD1	1.23	0.92
1:B:233:ALA:O	1:B:237:VAL:HG22	1.69	0.92
1:B:364:CYS:SG	3:B:501:HG:HG	1.86	0.92
1:A:295:SER:HB3	1:A:298:ILE:HD13	1.50	0.92
1:B:151:VAL:CG1	1:B:155:ILE:CD1	2.47	0.92
1:C:110:GLY:C	1:C:113:ILE:HG22	1.88	0.92
1:C:29:ILE:HG13	1:C:30:LEU:CD1	2.00	0.92
1:C:251:LEU:HD21	1:C:407:THR:HG23	1.50	0.92
1:A:110:GLY:C	1:A:113:ILE:HG22	1.88	0.92
1:A:29:ILE:HG13	1:A:30:LEU:CD1	2.00	0.92
1:B:195:TYR:CD1	1:B:353:ALA:HB2	2.03	0.91
1:B:299:TYR:HB2	1:B:303:LEU:CD2	2.01	0.91
1:C:195:TYR:CD1	1:C:353:ALA:HB2	2.03	0.91
1:B:155:ILE:HD12	1:B:155:ILE:H	1.34	0.91
1:A:299:TYR:HB2	1:A:303:LEU:CD2	2.01	0.91
1:A:251:LEU:HD21	1:A:407:THR:HG23	1.51	0.91
1:A:248:PHE:HD2	1:A:258:PRO:HB2	1.34	0.91
1:A:155:ILE:HD12	1:A:155:ILE:H	1.34	0.91
1:A:299:TYR:CA	1:A:303:LEU:HD23	2.01	0.91
1:B:29:ILE:HG13	1:B:30:LEU:CD1	2.00	0.91
1:A:233:ALA:O	1:A:237:VAL:HG22	1.71	0.91
1:C:107:PHE:HB3	1:C:230:LYS:HE2	1.51	0.91
1:C:248:PHE:HD2	1:C:258:PRO:HB2	1.35	0.90
1:A:29:ILE:CG1	1:A:30:LEU:HD12	2.01	0.90
1:B:299:TYR:CA	1:B:303:LEU:HD23	2.01	0.90
1:C:106:LEU:HD12	1:C:107:PHE:H	1.30	0.90
1:A:82:GLY:HA2	1:A:85:ILE:HG22	1.53	0.90

Continued on next page...

Continued from previous page...

Atom-1	Atom-2	Distance(Å)	Clash(Å)
1:C:29:ILE:CG1	1:C:30:LEU:HD12	2.01	0.90
1:C:339:LEU:O	1:C:342:VAL:HG12	1.70	0.90
1:B:191:ALA:O	1:B:195:TYR:CD2	2.25	0.90
1:C:82:GLY:HA2	1:C:85:ILE:HG22	1.51	0.90
1:B:82:GLY:HA2	1:B:85:ILE:HG22	1.53	0.90
1:C:117:VAL:HG23	1:C:118:GLY:N	1.86	0.90
1:C:299:TYR:HB2	1:C:303:LEU:CD2	2.01	0.90
1:B:247:TYR:CE1	1:B:404:GLY:HA2	2.07	0.89
1:A:191:ALA:O	1:A:195:TYR:CD2	2.24	0.89
1:B:29:ILE:CG1	1:B:30:LEU:HD12	2.02	0.89
1:A:333:LEU:HA	1:A:337:GLN:HE21	1.31	0.89
1:C:299:TYR:CA	1:C:303:LEU:HD23	2.01	0.89
1:A:89:TYR:HD1	1:A:310:ASN:ND2	1.51	0.89
1:A:333:LEU:CA	1:A:337:GLN:HE21	1.86	0.89
1:A:245:LEU:O	1:A:245:LEU:CD2	2.19	0.89
1:C:190:LEU:O	1:C:194:MET:HG2	1.73	0.89
1:C:57:LEU:CD2	1:C:194:MET:HE3	2.02	0.89
1:B:245:LEU:O	1:B:245:LEU:CD2	2.18	0.89
1:C:50:PHE:O	1:C:54:LEU:HD13	1.72	0.89
1:C:114:HIS:HA	1:C:328:ALA:O	1.74	0.88
1:C:99:LEU:HD11	1:C:241:LEU:HD22	1.56	0.88
1:C:245:LEU:O	1:C:245:LEU:CD2	2.18	0.88
1:A:151:VAL:CG1	1:A:155:ILE:CD1	2.48	0.88
1:C:333:LEU:CA	1:C:337:GLN:HE21	1.86	0.88
1:B:333:LEU:CA	1:B:337:GLN:HE21	1.86	0.88
1:A:50:PHE:O	1:A:54:LEU:HD13	1.73	0.88
1:C:247:TYR:CE1	1:C:404:GLY:HA2	2.08	0.88
1:C:89:TYR:CG	1:C:310:ASN:HB2	2.08	0.88
1:B:107:PHE:C	1:B:109:PRO:HD3	1.94	0.88
1:A:299:TYR:HB2	1:A:303:LEU:HD23	1.55	0.88
1:A:36:ALA:HB1	1:A:218:ALA:CB	2.02	0.88
1:B:50:PHE:O	1:B:54:LEU:HD13	1.74	0.88
1:B:74:SER:OG	1:B:166:THR:HG21	1.74	0.88
1:A:89:TYR:CG	1:A:310:ASN:HB2	2.09	0.88
1:B:13:LEU:C	1:B:13:LEU:HD23	1.94	0.88
1:B:196:LYS:HA	1:B:196:LYS:CE	2.04	0.87
1:B:117:VAL:HG23	1:B:118:GLY:N	1.86	0.87
1:A:6:LYS:C	1:A:7:TYR:CD2	2.48	0.87
1:C:299:TYR:HB2	1:C:303:LEU:HD23	1.55	0.87
1:C:6:LYS:O	1:C:7:TYR:CB	2.23	0.87
1:B:299:TYR:HB2	1:B:303:LEU:HD23	1.55	0.87
1:A:13:LEU:C	1:A:13:LEU:HD23	1.94	0.87

Continued on next page...

Continued from previous page...

Atom-1	Atom-2	Distance(Å)	Clash(Å)
1:C:13:LEU:C	1:C:13:LEU:HD23	1.94	0.87
1:B:295:SER:CB	1:B:298:ILE:HD13	2.05	0.87
1:C:73:ILE:HD11	1:C:309:ILE:HD13	1.57	0.87
1:C:6:LYS:C	1:C:7:TYR:CD2	2.48	0.87
1:A:74:SER:OG	1:A:166:THR:HG21	1.75	0.87
1:C:97:VAL:O	1:C:101:ILE:CD1	2.23	0.87
1:A:117:VAL:HG23	1:A:118:GLY:N	1.87	0.87
1:B:114:HIS:HA	1:B:328:ALA:O	1.75	0.87
1:C:107:PHE:C	1:C:109:PRO:HD3	1.94	0.87
1:B:248:PHE:HD2	1:B:258:PRO:HB2	1.34	0.87
1:A:343:LEU:O	1:A:347:LEU:HD13	1.75	0.86
1:B:36:ALA:HB1	1:B:218:ALA:CB	2.02	0.86
1:A:247:TYR:CE1	1:A:404:GLY:HA2	2.09	0.86
1:C:343:LEU:O	1:C:347:LEU:HD13	1.74	0.86
1:B:245:LEU:HD23	1:B:245:LEU:C	1.95	0.86
1:A:6:LYS:O	1:A:7:TYR:CB	2.22	0.86
1:C:295:SER:CB	1:C:298:ILE:HD13	2.04	0.86
1:B:6:LYS:C	1:B:7:TYR:CD2	2.48	0.86
1:B:196:LYS:CA	1:B:196:LYS:HE2	2.06	0.86
1:B:57:LEU:CD2	1:B:194:MET:HE3	2.06	0.86
1:C:61:ILE:O	1:C:65:SER:CB	2.23	0.86
1:B:6:LYS:O	1:B:7:TYR:CB	2.23	0.86
1:A:97:VAL:O	1:A:101:ILE:CD1	2.23	0.86
1:B:89:TYR:CG	1:B:310:ASN:HB2	2.10	0.86
1:A:245:LEU:C	1:A:245:LEU:HD23	1.96	0.86
1:A:114:HIS:HA	1:A:328:ALA:O	1.76	0.85
1:B:369:SER:O	1:B:370:VAL:HB	1.76	0.85
1:B:343:LEU:O	1:B:347:LEU:HD13	1.75	0.85
1:A:190:LEU:O	1:A:194:MET:HG2	1.75	0.85
1:A:295:SER:CB	1:A:298:ILE:HD13	2.05	0.85
1:A:107:PHE:C	1:A:109:PRO:HD3	1.95	0.85
1:B:97:VAL:O	1:B:101:ILE:CD1	2.23	0.85
1:C:250:LEU:C	1:C:253:ILE:HG22	1.96	0.85
1:A:196:LYS:HA	1:A:196:LYS:CE	2.05	0.85
1:C:191:ALA:O	1:C:195:TYR:CE2	2.29	0.85
1:B:250:LEU:C	1:B:253:ILE:HG22	1.97	0.85
1:C:36:ALA:HB1	1:C:218:ALA:CB	2.02	0.85
1:C:245:LEU:C	1:C:245:LEU:HD23	1.96	0.85
1:A:248:PHE:CD2	1:A:258:PRO:CB	2.59	0.85
1:C:196:LYS:CE	1:C:196:LYS:HA	2.06	0.85
1:A:266:LYS:O	1:A:270:LEU:CD2	2.21	0.85
1:B:190:LEU:O	1:B:194:MET:HG2	1.76	0.85

Continued on next page...

Continued from previous page...

Atom-1	Atom-2	Distance(Å)	Clash(Å)
1:A:195:TYR:CD1	1:A:353:ALA:HB2	2.05	0.84
1:A:73:ILE:HD11	1:A:309:ILE:HD13	1.58	0.84
1:B:355:VAL:O	2:B:500:ASP:N	2.09	0.84
1:A:248:PHE:HD2	1:A:258:PRO:CB	1.89	0.84
1:B:103:MET:CE	1:B:237:VAL:CG2	2.55	0.84
1:B:266:LYS:O	1:B:270:LEU:CD2	2.21	0.84
1:C:247:TYR:HD1	1:C:407:THR:HG21	1.42	0.84
1:A:185:ASP:OD1	1:B:178:LYS:HE2	1.75	0.84
1:B:334:THR:H	1:B:337:GLN:NE2	1.75	0.84
1:C:97:VAL:O	1:C:101:ILE:HD13	1.77	0.84
1:C:248:PHE:HD2	1:C:258:PRO:CB	1.90	0.84
1:C:8:ILE:HG12	1:C:15:LYS:HZ1	1.42	0.84
1:A:157:PHE:HD1	1:C:56:MET:CE	1.90	0.84
1:A:99:LEU:HD11	1:A:241:LEU:HD22	1.58	0.84
1:A:250:LEU:C	1:A:253:ILE:HG22	1.98	0.84
1:B:56:MET:HE1	1:C:157:PHE:CD1	2.11	0.84
1:B:248:PHE:HD2	1:B:258:PRO:CB	1.90	0.84
1:A:334:THR:H	1:A:337:GLN:NE2	1.74	0.84
1:A:369:SER:O	1:A:370:VAL:HB	1.77	0.84
1:B:104:ALA:O	1:B:107:PHE:O	1.96	0.84
1:B:103:MET:HE1	1:B:237:VAL:HG23	1.59	0.84
1:A:61:ILE:O	1:A:65:SER:CB	2.24	0.84
1:C:334:THR:H	1:C:337:GLN:NE2	1.75	0.84
1:B:299:TYR:CB	1:B:303:LEU:HD23	2.08	0.83
1:B:99:LEU:HD11	1:B:241:LEU:HD22	1.58	0.83
1:B:248:PHE:CD2	1:B:258:PRO:CB	2.59	0.83
1:C:369:SER:O	1:C:370:VAL:HB	1.78	0.83
1:C:248:PHE:CD2	1:C:258:PRO:CB	2.59	0.83
1:A:8:ILE:HG12	1:A:15:LYS:CE	2.09	0.83
1:B:97:VAL:O	1:B:101:ILE:HD13	1.78	0.83
1:A:299:TYR:CB	1:A:303:LEU:HD23	2.09	0.83
1:A:8:ILE:HG12	1:A:15:LYS:NZ	1.92	0.83
1:C:74:SER:OG	1:C:166:THR:HG21	1.76	0.83
1:A:104:ALA:O	1:A:107:PHE:O	1.97	0.83
1:A:247:TYR:HD1	1:A:407:THR:HG21	1.42	0.83
1:A:103:MET:CE	1:A:237:VAL:CG2	2.56	0.83
1:C:117:VAL:HG22	1:C:378:ASN:OD1	1.79	0.83
1:C:355:VAL:O	2:C:500:ASP:N	2.10	0.83
1:C:266:LYS:O	1:C:270:LEU:CD2	2.20	0.83
1:B:110:GLY:HA2	1:B:113:ILE:HG21	1.60	0.83
1:B:85:ILE:CG1	1:B:89:TYR:HE2	1.92	0.83
1:A:196:LYS:CA	1:A:196:LYS:HE2	2.07	0.83

Continued on next page...

Continued from previous page...

Atom-1	Atom-2	Distance(Å)	Clash(Å)
1:C:8:ILE:HG12	1:C:15:LYS:NZ	1.93	0.83
1:B:61:ILE:O	1:B:65:SER:CB	2.27	0.83
1:A:97:VAL:O	1:A:101:ILE:HD13	1.77	0.83
1:A:191:ALA:O	1:A:195:TYR:CE2	2.31	0.82
1:C:103:MET:CE	1:C:237:VAL:CG2	2.56	0.82
1:C:299:TYR:CB	1:C:303:LEU:HD23	2.09	0.82
1:A:7:TYR:O	1:A:9:GLU:HG2	1.79	0.82
1:B:191:ALA:O	1:B:195:TYR:CE2	2.33	0.82
1:C:104:ALA:O	1:C:107:PHE:O	1.96	0.82
1:A:203:GLN:HA	1:A:203:GLN:HE21	1.44	0.82
1:B:117:VAL:HG22	1:B:378:ASN:OD1	1.80	0.82
1:A:110:GLY:HA2	1:A:113:ILE:HG21	1.62	0.82
1:B:110:GLY:HA2	1:B:113:ILE:CG2	2.09	0.82
1:C:105:ARG:HH21	1:C:338:GLN:HE22	0.84	0.82
1:B:56:MET:CE	1:C:157:PHE:CD1	2.59	0.82
1:C:7:TYR:O	1:C:9:GLU:HG2	1.79	0.82
1:B:8:ILE:HG12	1:B:15:LYS:HZ1	1.43	0.82
1:C:203:GLN:HE21	1:C:203:GLN:HA	1.44	0.82
1:B:73:ILE:HD11	1:B:309:ILE:HD13	1.59	0.81
1:B:115:LEU:H	1:B:115:LEU:HD23	1.45	0.81
1:C:50:PHE:CE1	1:C:205:ALA:HA	2.16	0.81
1:C:196:LYS:HE2	1:C:196:LYS:CA	2.08	0.81
1:B:248:PHE:CE2	1:B:258:PRO:HB2	2.15	0.81
1:C:106:LEU:HD12	1:C:107:PHE:CD1	2.16	0.81
1:B:50:PHE:CE1	1:B:205:ALA:HA	2.15	0.81
1:B:8:ILE:HG12	1:B:15:LYS:NZ	1.96	0.81
1:C:110:GLY:HA2	1:C:113:ILE:CG2	2.10	0.81
1:B:250:LEU:HA	1:B:253:ILE:CG2	2.10	0.81
1:B:8:ILE:HG12	1:B:15:LYS:CE	2.10	0.81
1:A:110:GLY:HA2	1:A:113:ILE:CG2	2.10	0.81
1:A:50:PHE:CE1	1:A:205:ALA:HA	2.16	0.81
1:B:54:LEU:HD12	1:B:54:LEU:N	1.96	0.81
1:A:8:ILE:HG12	1:A:15:LYS:HZ1	1.46	0.81
1:B:247:TYR:HD1	1:B:407:THR:HG21	1.44	0.81
1:C:248:PHE:CE2	1:C:258:PRO:HB2	2.15	0.81
1:C:8:ILE:HG12	1:C:15:LYS:CE	2.10	0.81
1:A:117:VAL:HG22	1:A:378:ASN:OD1	1.80	0.81
1:B:7:TYR:O	1:B:9:GLU:HG2	1.79	0.80
1:C:152:LEU:CD1	1:C:152:LEU:H	1.95	0.80
1:A:85:ILE:CG1	1:A:89:TYR:CE2	2.64	0.80
1:B:203:GLN:HA	1:B:203:GLN:HE21	1.44	0.80
1:A:248:PHE:CE2	1:A:258:PRO:HB2	2.15	0.80

Continued on next page...

Continued from previous page...

Atom-1	Atom-2	Distance(Å)	Clash(Å)
1:C:110:GLY:HA2	1:C:113:ILE:HG21	1.62	0.80
1:B:317:TYR:CE1	1:B:397:ARG:NH2	2.49	0.80
1:B:363:LEU:O	1:B:366:VAL:HG12	1.81	0.80
1:A:355:VAL:HG12	1:A:356:PRO:HD2	1.43	0.80
1:A:166:THR:HA	1:A:169:MET:HE2	1.64	0.80
1:B:78:LEU:HD23	1:B:78:LEU:H	1.47	0.80
1:C:74:SER:CB	1:C:166:THR:HG21	2.12	0.80
1:B:152:LEU:CD1	1:B:152:LEU:H	1.93	0.80
1:A:152:LEU:H	1:A:152:LEU:CD1	1.94	0.80
1:A:355:VAL:O	2:A:500:ASP:N	2.14	0.80
1:C:250:LEU:HA	1:C:253:ILE:CG2	2.11	0.80
1:A:74:SER:CB	1:A:166:THR:HG21	2.12	0.80
1:A:290:LYS:O	1:A:293:GLY:N	2.15	0.80
1:C:343:LEU:HD13	1:C:343:LEU:O	1.83	0.79
1:B:74:SER:CB	1:B:166:THR:HG21	2.12	0.79
1:B:109:PRO:HB3	1:B:231:VAL:HG22	1.65	0.79
1:C:85:ILE:CG1	1:C:89:TYR:HE2	1.92	0.79
1:A:193:ALA:HA	1:B:168:LEU:HD11	1.64	0.79
1:A:343:LEU:HD13	1:A:343:LEU:O	1.83	0.79
1:B:107:PHE:O	1:B:109:PRO:HD3	1.82	0.79
1:C:89:TYR:CD1	1:C:310:ASN:HB3	2.17	0.79
1:A:203:GLN:NE2	1:A:203:GLN:HA	1.98	0.79
1:B:195:TYR:CD1	1:B:353:ALA:HB1	2.18	0.79
1:C:195:TYR:HE1	1:C:353:ALA:HB2	0.81	0.79
1:C:290:LYS:O	1:C:293:GLY:N	2.15	0.79
1:A:250:LEU:HA	1:A:253:ILE:CG2	2.12	0.79
1:C:178:LYS:HD3	1:C:178:LYS:O	1.83	0.79
1:C:317:TYR:CE1	1:C:397:ARG:NH2	2.51	0.79
1:A:85:ILE:O	1:A:88:TYR:HB3	1.82	0.79
1:B:85:ILE:O	1:B:88:TYR:HB3	1.83	0.79
1:A:363:LEU:O	1:A:366:VAL:HG12	1.83	0.79
1:B:252:LYS:CD	1:B:252:LYS:O	2.28	0.79
1:A:8:ILE:CG1	1:A:15:LYS:HE3	2.13	0.79
1:A:105:ARG:HH21	1:A:338:GLN:HE22	0.83	0.79
1:C:363:LEU:O	1:C:366:VAL:HG12	1.82	0.79
1:A:78:LEU:H	1:A:78:LEU:HD23	1.47	0.79
1:B:407:THR:O	1:B:411:ILE:CD1	2.29	0.79
1:B:196:LYS:CG	1:C:168:LEU:HD21	2.13	0.79
1:A:89:TYR:CD1	1:A:310:ASN:CG	2.31	0.78
1:C:252:LYS:O	1:C:252:LYS:CD	2.29	0.78
1:C:178:LYS:HD3	1:C:178:LYS:C	2.04	0.78
1:C:106:LEU:CD1	1:C:107:PHE:CG	2.67	0.78

Continued on next page...

Continued from previous page...

Atom-1	Atom-2	Distance(Å)	Clash(Å)
1:C:107:PHE:O	1:C:109:PRO:HD3	1.81	0.78
1:A:85:ILE:CG1	1:A:89:TYR:HE2	1.91	0.78
1:B:203:GLN:HA	1:B:203:GLN:NE2	1.97	0.78
1:C:101:ILE:HD12	1:C:101:ILE:N	1.98	0.78
1:B:290:LYS:O	1:B:293:GLY:N	2.16	0.78
1:A:54:LEU:N	1:A:54:LEU:HD12	1.98	0.78
1:A:117:VAL:CG2	1:A:118:GLY:H	1.94	0.78
1:C:185:ASP:O	1:C:188:ASN:O	2.01	0.78
1:C:203:GLN:NE2	1:C:203:GLN:HA	1.97	0.78
1:A:106:LEU:HD12	1:A:107:PHE:CD1	2.15	0.78
1:B:411:ILE:N	1:B:411:ILE:HD12	1.98	0.78
1:B:281:THR:HG22	1:B:281:THR:O	1.82	0.78
1:C:85:ILE:O	1:C:88:TYR:HB3	1.83	0.78
1:A:411:ILE:N	1:A:411:ILE:HD12	1.97	0.78
1:A:109:PRO:HB3	1:A:231:VAL:HG22	1.66	0.78
1:B:105:ARG:HH21	1:B:338:GLN:HE22	0.82	0.78
1:B:25:ILE:HD12	1:B:25:ILE:N	1.99	0.78
1:C:8:ILE:CG1	1:C:15:LYS:HE3	2.14	0.78
1:A:107:PHE:O	1:A:109:PRO:HD3	1.83	0.78
1:A:134:LEU:O	1:A:137:ILE:HG12	1.84	0.78
1:B:106:LEU:CD1	1:B:107:PHE:CG	2.66	0.78
1:C:109:PRO:HB3	1:C:231:VAL:HG22	1.64	0.78
1:A:317:TYR:CE1	1:A:397:ARG:NH2	2.52	0.78
1:A:185:ASP:O	1:A:188:ASN:O	2.02	0.78
1:B:110:GLY:O	1:B:113:ILE:CG2	2.26	0.77
1:C:115:LEU:H	1:C:115:LEU:HD23	1.47	0.77
1:C:195:TYR:CD1	1:C:353:ALA:HB1	2.18	0.77
1:C:407:THR:O	1:C:411:ILE:CD1	2.29	0.77
1:C:25:ILE:HD12	1:C:25:ILE:N	2.00	0.77
1:A:25:ILE:HD12	1:A:25:ILE:N	1.98	0.77
1:A:178:LYS:HD3	1:A:178:LYS:O	1.84	0.77
1:B:8:ILE:CG1	1:B:15:LYS:HE3	2.15	0.77
1:B:106:LEU:HD12	1:B:107:PHE:CD1	2.14	0.77
1:A:196:LYS:CG	1:B:168:LEU:HD21	2.14	0.77
1:B:178:LYS:HD3	1:B:178:LYS:C	2.04	0.77
1:A:152:LEU:N	1:A:152:LEU:HD12	2.00	0.77
1:B:134:LEU:O	1:B:137:ILE:HG12	1.84	0.77
1:A:101:ILE:HD12	1:A:101:ILE:N	2.00	0.77
1:A:103:MET:HE1	1:A:237:VAL:HG23	1.66	0.77
1:C:134:LEU:O	1:C:137:ILE:HG12	1.83	0.77
1:A:178:LYS:C	1:A:178:LYS:HD3	2.04	0.77
1:A:106:LEU:CD1	1:A:107:PHE:CG	2.66	0.76

Continued on next page...

Continued from previous page...

Atom-1	Atom-2	Distance(Å)	Clash(Å)
1:C:85:ILE:CG1	1:C:89:TYR:CE2	2.65	0.76
1:B:185:ASP:O	1:B:188:ASN:O	2.03	0.76
1:C:281:THR:HG22	1:C:281:THR:O	1.83	0.76
1:A:281:THR:O	1:A:281:THR:HG22	1.84	0.76
1:A:205:ALA:N	1:A:206:PRO:HD2	2.01	0.76
1:A:196:LYS:HG2	1:B:168:LEU:HD21	1.66	0.76
1:B:178:LYS:HD3	1:B:178:LYS:O	1.85	0.76
1:B:101:ILE:N	1:B:101:ILE:HD12	1.99	0.76
1:C:411:ILE:HD12	1:C:411:ILE:N	1.99	0.76
1:C:78:LEU:HD23	1:C:78:LEU:H	1.49	0.76
1:A:89:TYR:CD1	1:A:310:ASN:HB3	2.18	0.76
1:C:54:LEU:HD12	1:C:54:LEU:N	2.00	0.76
1:C:374:LEU:HD12	1:C:374:LEU:N	2.01	0.76
1:C:343:LEU:HD13	1:C:343:LEU:C	2.06	0.76
1:A:407:THR:O	1:A:411:ILE:CD1	2.30	0.76
1:A:115:LEU:HD23	1:A:115:LEU:H	1.49	0.76
1:B:56:MET:HE2	1:C:157:PHE:HD1	1.49	0.75
1:A:195:TYR:CD1	1:A:353:ALA:HB1	2.19	0.75
1:A:343:LEU:HD13	1:A:343:LEU:C	2.06	0.75
1:B:89:TYR:CE1	1:B:310:ASN:ND2	2.43	0.75
1:B:241:LEU:HD23	1:B:241:LEU:O	1.87	0.75
1:B:205:ALA:N	1:B:206:PRO:HD2	2.02	0.75
1:A:252:LYS:CD	1:A:252:LYS:O	2.29	0.75
1:B:343:LEU:HD13	1:B:343:LEU:O	1.85	0.75
1:C:213:ILE:HD12	1:C:213:ILE:C	2.07	0.74
1:B:152:LEU:HD12	1:B:152:LEU:N	1.98	0.74
1:C:55:CYS:O	1:C:58:VAL:CG1	2.30	0.74
1:B:85:ILE:CG1	1:B:89:TYR:CE2	2.64	0.74
1:B:213:ILE:HD12	1:B:213:ILE:C	2.07	0.74
1:A:334:THR:O	1:A:337:GLN:HG2	1.88	0.74
1:B:343:LEU:C	1:B:343:LEU:HD13	2.08	0.74
1:C:220:GLN:HB3	1:C:224:VAL:HG13	1.68	0.74
1:A:55:CYS:O	1:A:58:VAL:CG1	2.29	0.74
1:A:374:LEU:N	1:A:374:LEU:HD12	2.02	0.74
1:B:220:GLN:HB3	1:B:224:VAL:HG13	1.68	0.74
1:C:205:ALA:N	1:C:206:PRO:HD2	2.01	0.74
1:A:110:GLY:O	1:A:113:ILE:CG2	2.28	0.74
1:B:369:SER:O	1:B:370:VAL:CB	2.36	0.74
1:A:299:TYR:CB	1:A:303:LEU:CD2	2.64	0.74
1:A:213:ILE:HD12	1:A:213:ILE:C	2.07	0.74
1:B:97:VAL:HG22	1:B:101:ILE:HD11	1.70	0.74
1:B:326:ALA:HB1	1:B:333:LEU:CD1	2.18	0.73

Continued on next page...

Continued from previous page...

Atom-1	Atom-2	Distance(Å)	Clash(Å)
1:B:339:LEU:O	1:B:342:VAL:CG1	2.36	0.73
1:B:374:LEU:N	1:B:374:LEU:HD12	2.02	0.73
1:C:326:ALA:HB1	1:C:333:LEU:CD1	2.16	0.73
1:C:241:LEU:HD23	1:C:241:LEU:O	1.87	0.73
1:B:299:TYR:CB	1:B:303:LEU:CD2	2.63	0.73
1:C:106:LEU:CD1	1:C:107:PHE:N	2.46	0.73
1:C:299:TYR:CB	1:C:303:LEU:CD2	2.64	0.73
1:C:88:TYR:CE2	1:C:92:THR:HG21	2.23	0.73
1:C:58:VAL:O	1:C:62:VAL:CG2	2.34	0.73
1:C:325:ILE:O	1:C:329:LEU:CD1	2.35	0.73
1:B:166:THR:HA	1:B:169:MET:CE	2.19	0.73
1:A:333:LEU:N	1:A:333:LEU:HD12	2.04	0.73
1:A:241:LEU:O	1:A:241:LEU:HD23	1.87	0.73
1:B:55:CYS:O	1:B:58:VAL:CG1	2.30	0.73
1:A:97:VAL:HG22	1:A:101:ILE:HD11	1.70	0.73
1:C:155:ILE:H	1:C:155:ILE:CD1	2.02	0.73
1:A:155:ILE:CD1	1:A:155:ILE:H	2.01	0.73
1:B:334:THR:O	1:B:337:GLN:HG2	1.89	0.73
1:A:195:TYR:HE1	1:A:353:ALA:HB2	0.84	0.73
1:B:290:LYS:HE3	1:B:299:TYR:OH	1.89	0.73
1:B:15:LYS:NZ	1:B:203:GLN:OE1	2.22	0.73
1:A:220:GLN:HB3	1:A:224:VAL:HG13	1.69	0.73
1:A:369:SER:O	1:A:370:VAL:CB	2.36	0.72
1:B:334:THR:N	1:B:337:GLN:HE21	1.87	0.72
1:C:369:SER:O	1:C:370:VAL:CB	2.37	0.72
1:C:99:LEU:CD1	1:C:241:LEU:HD22	2.19	0.72
1:B:325:ILE:O	1:B:329:LEU:CD1	2.36	0.72
1:A:44:LYS:N	1:A:45:PRO:HD2	2.05	0.72
1:B:299:TYR:HA	1:B:303:LEU:HD23	1.71	0.72
1:A:166:THR:HA	1:A:169:MET:CE	2.19	0.72
1:A:339:LEU:O	1:A:342:VAL:CG1	2.36	0.72
1:A:179:SER:HA	1:C:185:ASP:OD2	1.88	0.72
1:C:334:THR:O	1:C:337:GLN:HG2	1.89	0.72
1:A:290:LYS:HE3	1:A:299:TYR:OH	1.89	0.72
1:B:258:PRO:O	1:B:261:PHE:HB3	1.89	0.72
1:C:258:PRO:O	1:C:261:PHE:HB3	1.89	0.72
1:C:110:GLY:O	1:C:113:ILE:CG2	2.28	0.72
1:C:110:GLY:O	1:C:113:ILE:N	2.18	0.72
1:C:152:LEU:N	1:C:152:LEU:HD12	2.00	0.72
1:B:88:TYR:CE2	1:B:92:THR:HG21	2.25	0.72
1:A:334:THR:N	1:A:337:GLN:HE21	1.87	0.72
1:B:155:ILE:CD1	1:B:155:ILE:H	2.02	0.72

Continued on next page...

Continued from previous page...

Atom-1	Atom-2	Distance(Å)	Clash(Å)
1:B:89:TYR:CD1	1:B:310:ASN:HB3	2.20	0.72
1:B:250:LEU:HA	1:B:253:ILE:HG22	1.70	0.72
1:A:326:ALA:HB1	1:A:333:LEU:CD1	2.17	0.72
1:C:97:VAL:HG22	1:C:101:ILE:HD11	1.71	0.72
1:A:299:TYR:HA	1:A:303:LEU:HD23	1.72	0.72
1:A:88:TYR:CE2	1:A:92:THR:HG21	2.25	0.71
1:C:106:LEU:CD1	1:C:107:PHE:CE1	2.54	0.71
1:C:290:LYS:HE3	1:C:299:TYR:OH	1.90	0.71
1:C:250:LEU:HA	1:C:253:ILE:HG22	1.71	0.71
1:A:183:LEU:C	1:A:183:LEU:HD23	2.11	0.71
1:C:197:ILE:O	1:C:201:VAL:HG23	1.90	0.71
1:B:107:PHE:HB3	1:B:230:LYS:CE	2.21	0.71
1:C:166:THR:HA	1:C:169:MET:CE	2.21	0.71
1:B:333:LEU:N	1:B:333:LEU:HD12	2.05	0.71
1:A:258:PRO:O	1:A:261:PHE:HB3	1.90	0.71
1:B:101:ILE:H	1:B:101:ILE:HD12	1.55	0.71
1:B:195:TYR:HE1	1:B:353:ALA:HB2	0.81	0.71
1:C:44:LYS:N	1:C:45:PRO:HD2	2.05	0.71
1:B:183:LEU:C	1:B:183:LEU:HD23	2.11	0.71
1:B:155:ILE:HD12	1:B:155:ILE:N	2.06	0.71
1:C:24:ALA:O	1:C:28:LEU:HD22	1.90	0.71
1:C:270:LEU:H	1:C:270:LEU:HD22	1.56	0.71
1:B:166:THR:HA	1:B:169:MET:HE3	1.73	0.71
1:B:155:ILE:HG13	1:B:365:MET:HE3	1.73	0.71
1:B:99:LEU:CD1	1:B:241:LEU:HD22	2.21	0.71
1:C:339:LEU:O	1:C:342:VAL:CG1	2.39	0.71
1:B:44:LYS:N	1:B:45:PRO:HD2	2.05	0.71
1:A:99:LEU:CD1	1:A:241:LEU:HD22	2.21	0.71
1:A:250:LEU:HA	1:A:253:ILE:HG22	1.72	0.71
1:C:160:ILE:N	1:C:160:ILE:HD12	2.05	0.71
1:C:231:VAL:HG21	1:C:324:PHE:CE1	2.26	0.70
1:C:333:LEU:HD12	1:C:333:LEU:N	2.05	0.70
1:A:325:ILE:O	1:A:329:LEU:CD1	2.38	0.70
1:A:101:ILE:HD12	1:A:101:ILE:H	1.56	0.70
1:C:334:THR:N	1:C:337:GLN:HE21	1.88	0.70
1:A:303:LEU:HD11	1:A:406:LEU:HD23	1.73	0.70
1:C:183:LEU:C	1:C:183:LEU:HD23	2.12	0.70
1:C:101:ILE:HD12	1:C:101:ILE:H	1.55	0.70
1:C:103:MET:HE1	1:C:237:VAL:HG23	1.67	0.70
1:A:106:LEU:CD1	1:A:107:PHE:N	2.46	0.70
1:B:10:TYR:HB3	1:B:11:PRO:CD	2.19	0.70
1:A:197:ILE:O	1:A:201:VAL:HG23	1.92	0.70

Continued on next page...

Continued from previous page...

Atom-1	Atom-2	Distance(Å)	Clash(Å)
1:B:106:LEU:CD1	1:B:107:PHE:CE1	2.52	0.70
1:C:303:LEU:HD11	1:C:406:LEU:HD23	1.73	0.70
1:A:24:ALA:O	1:A:28:LEU:HD22	1.92	0.70
1:C:15:LYS:NZ	1:C:203:GLN:OE1	2.24	0.70
1:A:298:ILE:N	1:A:298:ILE:HD12	2.06	0.70
1:A:155:ILE:HG13	1:A:365:MET:HE3	1.71	0.70
1:C:6:LYS:C	1:C:7:TYR:HD2	1.90	0.70
1:B:197:ILE:O	1:B:201:VAL:HG23	1.92	0.70
1:C:299:TYR:HA	1:C:303:LEU:HD23	1.72	0.70
1:B:250:LEU:CA	1:B:253:ILE:HG22	2.22	0.70
1:A:56:MET:CE	1:B:157:PHE:CD1	2.70	0.70
1:B:298:ILE:HD12	1:B:298:ILE:N	2.06	0.70
1:B:110:GLY:CA	1:B:113:ILE:HG22	2.21	0.69
1:C:316:LEU:O	1:C:316:LEU:HD23	1.92	0.69
1:A:12:VAL:HA	1:A:15:LYS:HB3	1.73	0.69
1:A:370:VAL:O	1:A:370:VAL:HG12	1.90	0.69
1:B:195:TYR:CE1	1:B:353:ALA:HB1	2.26	0.69
1:B:364:CYS:SG	1:B:374:LEU:HD21	2.32	0.69
1:A:10:TYR:HB3	1:A:11:PRO:CD	2.18	0.69
1:C:12:VAL:HA	1:C:15:LYS:HB3	1.74	0.69
1:C:110:GLY:CA	1:C:113:ILE:HG22	2.22	0.69
1:B:24:ALA:O	1:B:28:LEU:HD22	1.90	0.69
1:A:58:VAL:O	1:A:62:VAL:CG2	2.36	0.69
1:A:231:VAL:HG21	1:A:324:PHE:CE1	2.27	0.69
1:B:394:ASP:O	1:B:397:ARG:HB3	1.92	0.69
1:B:58:VAL:O	1:B:62:VAL:CG2	2.36	0.69
1:A:130:LEU:HD12	1:A:133:ILE:CG2	2.23	0.69
1:B:231:VAL:HG21	1:B:324:PHE:CE1	2.27	0.69
1:B:270:LEU:H	1:B:270:LEU:HD22	1.56	0.69
1:C:159:ILE:HD12	1:C:159:ILE:N	2.07	0.69
1:B:130:LEU:HD12	1:B:133:ILE:CG2	2.23	0.69
1:A:107:PHE:HB3	1:A:230:LYS:CE	2.20	0.69
1:B:370:VAL:HG12	1:B:370:VAL:O	1.93	0.69
1:C:298:ILE:N	1:C:298:ILE:HD12	2.07	0.69
1:A:157:PHE:HD1	1:C:56:MET:HE2	1.56	0.69
1:A:155:ILE:HD12	1:A:155:ILE:N	2.06	0.69
1:C:107:PHE:HB3	1:C:230:LYS:CE	2.22	0.69
1:C:370:VAL:O	1:C:370:VAL:HG12	1.92	0.69
1:C:195:TYR:HE1	1:C:353:ALA:CB	1.77	0.69
1:C:394:ASP:O	1:C:397:ARG:HB3	1.92	0.69
1:B:303:LEU:HD11	1:B:406:LEU:HD23	1.74	0.69
1:B:29:ILE:CG1	1:B:30:LEU:CD1	2.68	0.69

Continued on next page...

Continued from previous page...

Atom-1	Atom-2	Distance(Å)	Clash(Å)
1:C:30:LEU:N	1:C:30:LEU:HD12	2.08	0.69
1:C:10:TYR:HB3	1:C:11:PRO:CD	2.19	0.69
1:A:56:MET:HE3	1:B:157:PHE:CD1	2.23	0.69
1:C:89:TYR:CD1	1:C:310:ASN:CG	2.31	0.69
1:A:160:ILE:HD12	1:A:160:ILE:N	2.09	0.68
1:A:151:VAL:O	1:A:154:THR:N	2.26	0.68
1:A:159:ILE:N	1:A:159:ILE:HD12	2.08	0.68
1:B:89:TYR:CD1	1:B:310:ASN:CG	2.33	0.68
1:B:55:CYS:SG	3:B:501:HG:HG	2.10	0.68
1:A:247:TYR:CD1	1:A:407:THR:HG21	2.27	0.68
1:B:160:ILE:N	1:B:160:ILE:HD12	2.08	0.68
1:B:110:GLY:CA	1:B:113:ILE:CG2	2.72	0.68
1:C:299:TYR:HA	1:C:303:LEU:CD2	2.23	0.68
1:A:299:TYR:HA	1:A:303:LEU:CD2	2.24	0.68
1:B:25:ILE:HD12	1:B:25:ILE:H	1.59	0.68
1:A:394:ASP:O	1:A:397:ARG:HB3	1.93	0.68
1:B:299:TYR:HA	1:B:303:LEU:CD2	2.23	0.68
1:C:210:PHE:O	1:C:214:ALA:HB2	1.93	0.68
1:B:316:LEU:O	1:B:316:LEU:HD23	1.93	0.68
1:A:117:VAL:CG2	1:A:378:ASN:OD1	2.41	0.68
1:A:15:LYS:NZ	1:A:203:GLN:OE1	2.26	0.68
1:C:155:ILE:O	1:C:159:ILE:HD13	1.93	0.68
1:C:250:LEU:CA	1:C:253:ILE:HG22	2.23	0.68
1:A:364:CYS:SG	1:A:374:LEU:HD21	2.34	0.68
1:B:156:PHE:O	1:B:160:ILE:CD1	2.36	0.68
1:A:8:ILE:CG1	1:A:15:LYS:CE	2.71	0.68
1:A:110:GLY:CA	1:A:113:ILE:HG22	2.22	0.68
1:C:151:VAL:O	1:C:154:THR:N	2.26	0.68
1:B:210:PHE:O	1:B:214:ALA:HB2	1.94	0.68
1:A:210:PHE:O	1:A:214:ALA:HB2	1.94	0.68
1:A:270:LEU:HD22	1:A:270:LEU:H	1.57	0.68
1:B:117:VAL:CG2	1:B:378:ASN:OD1	2.42	0.68
1:B:12:VAL:HA	1:B:15:LYS:HB3	1.74	0.68
1:C:32:HIS:HB2	1:C:33:TYR:CD2	2.29	0.68
1:A:316:LEU:O	1:A:316:LEU:HD23	1.94	0.68
1:B:6:LYS:C	1:B:7:TYR:HD2	1.92	0.68
1:A:151:VAL:HG12	1:A:155:ILE:HD13	1.76	0.67
1:B:155:ILE:O	1:B:159:ILE:HD13	1.94	0.67
1:B:159:ILE:HD12	1:B:159:ILE:N	2.09	0.67
1:B:8:ILE:HG12	1:B:15:LYS:HE3	1.74	0.67
1:C:220:GLN:HB3	1:C:224:VAL:CG1	2.24	0.67
1:B:30:LEU:N	1:B:30:LEU:HD12	2.09	0.67

Continued on next page...

Continued from previous page...

Atom-1	Atom-2	Distance(Å)	Clash(Å)
1:C:364:CYS:SG	1:C:374:LEU:HD21	2.35	0.67
1:B:32:HIS:HB2	1:B:33:TYR:CD2	2.30	0.67
1:A:346:VAL:O	1:A:350:ILE:HG13	1.94	0.67
1:C:117:VAL:CG2	1:C:378:ASN:OD1	2.41	0.67
1:B:219:GLU:O	1:B:220:GLN:HB2	1.94	0.67
1:B:363:LEU:HD12	1:B:366:VAL:CG1	2.24	0.67
1:A:64:ALA:CB	1:A:191:ALA:HB2	2.24	0.67
1:A:250:LEU:CA	1:A:253:ILE:HG22	2.24	0.67
1:A:185:ASP:OD2	1:B:179:SER:HA	1.95	0.67
1:C:8:ILE:HG12	1:C:15:LYS:HE3	1.75	0.67
1:A:110:GLY:O	1:A:113:ILE:N	2.20	0.67
1:C:343:LEU:O	1:C:347:LEU:CD1	2.43	0.67
1:B:82:GLY:CA	1:B:85:ILE:HG22	2.25	0.67
1:C:219:GLU:O	1:C:220:GLN:HB2	1.94	0.67
1:C:110:GLY:CA	1:C:113:ILE:CG2	2.73	0.67
1:A:219:GLU:O	1:A:220:GLN:HB2	1.94	0.67
1:A:32:HIS:HB2	1:A:33:TYR:CD2	2.30	0.67
1:C:355:VAL:HG12	1:C:356:PRO:N	2.10	0.67
1:B:130:LEU:O	1:B:133:ILE:CG2	2.43	0.67
1:A:89:TYR:HB3	1:A:310:ASN:HB2	1.77	0.67
1:C:363:LEU:HD12	1:C:366:VAL:CG1	2.24	0.67
1:C:8:ILE:CG1	1:C:15:LYS:CE	2.72	0.66
1:C:130:LEU:HD12	1:C:133:ILE:CG2	2.25	0.66
1:B:115:LEU:HD23	1:B:115:LEU:N	2.10	0.66
1:B:355:VAL:HG12	1:B:356:PRO:N	2.11	0.66
1:A:193:ALA:CA	1:B:168:LEU:HD11	2.25	0.66
1:A:196:LYS:HD2	1:B:168:LEU:HD23	1.76	0.66
1:A:363:LEU:HD12	1:A:366:VAL:CG1	2.25	0.66
1:C:155:ILE:N	1:C:155:ILE:HD12	2.07	0.66
1:A:73:ILE:HG22	1:A:73:ILE:O	1.96	0.66
1:A:329:LEU:HD12	1:A:329:LEU:N	2.10	0.66
1:A:110:GLY:CA	1:A:113:ILE:CG2	2.73	0.66
1:C:346:VAL:O	1:C:350:ILE:HG13	1.96	0.66
1:B:106:LEU:CD1	1:B:107:PHE:N	2.46	0.66
1:A:30:LEU:N	1:A:30:LEU:HD12	2.09	0.66
1:C:247:TYR:CD1	1:C:407:THR:HG21	2.27	0.66
1:A:25:ILE:HD12	1:A:25:ILE:H	1.58	0.66
1:B:40:HIS:HD2	1:B:215:TYR:CE1	2.14	0.66
1:A:130:LEU:O	1:A:133:ILE:CG2	2.42	0.66
1:C:97:VAL:CG1	1:C:342:VAL:HG23	2.25	0.66
1:B:64:ALA:CB	1:B:191:ALA:HB2	2.26	0.66
1:C:73:ILE:O	1:C:73:ILE:HG22	1.96	0.66

Continued on next page...

Continued from previous page...

Atom-1	Atom-2	Distance(Å)	Clash(Å)
1:B:247:TYR:CD1	1:B:407:THR:HG21	2.29	0.66
1:A:113:ILE:HB	1:A:227:GLU:HG3	1.76	0.66
1:C:64:ALA:CB	1:C:191:ALA:HB2	2.26	0.66
1:C:82:GLY:CA	1:C:85:ILE:HG22	2.22	0.66
1:B:78:LEU:HD23	1:B:78:LEU:N	2.10	0.66
1:C:89:TYR:CE1	1:C:310:ASN:ND2	2.42	0.66
1:A:13:LEU:C	1:A:13:LEU:CD2	2.64	0.66
1:A:334:THR:H	1:A:337:GLN:HE21	1.44	0.66
1:B:151:VAL:HG12	1:B:155:ILE:HD13	1.74	0.66
1:C:334:THR:N	1:C:337:GLN:NE2	2.44	0.66
1:A:156:PHE:O	1:A:160:ILE:CD1	2.35	0.66
1:B:13:LEU:C	1:B:13:LEU:CD2	2.64	0.66
1:A:157:PHE:HD1	1:C:56:MET:HE1	1.60	0.66
1:A:155:ILE:O	1:A:159:ILE:HD13	1.96	0.65
1:B:151:VAL:O	1:B:154:THR:N	2.29	0.65
1:A:78:LEU:HD23	1:A:78:LEU:N	2.11	0.65
1:B:73:ILE:HG22	1:B:73:ILE:O	1.96	0.65
1:C:303:LEU:H	1:C:303:LEU:HD22	1.61	0.65
1:C:29:ILE:CG1	1:C:30:LEU:CD1	2.68	0.65
1:B:220:GLN:HB3	1:B:224:VAL:CG1	2.26	0.65
1:B:113:ILE:HB	1:B:227:GLU:HG3	1.77	0.65
1:B:346:VAL:O	1:B:350:ILE:HG13	1.97	0.65
1:C:309:ILE:HG22	1:C:310:ASN:N	2.11	0.65
1:B:213:ILE:HD12	1:B:214:ALA:H	1.59	0.65
1:A:342:VAL:HG13	1:A:343:LEU:N	2.11	0.65
1:C:290:LYS:O	1:C:291:GLU:C	2.35	0.65
1:C:78:LEU:HD23	1:C:78:LEU:N	2.12	0.65
1:C:156:PHE:O	1:C:160:ILE:CD1	2.34	0.65
1:C:329:LEU:HD12	1:C:329:LEU:N	2.11	0.65
1:A:220:GLN:HB3	1:A:224:VAL:CG1	2.26	0.65
1:C:25:ILE:HD12	1:C:25:ILE:H	1.60	0.65
1:A:334:THR:N	1:A:337:GLN:NE2	2.43	0.65
1:C:115:LEU:N	1:C:115:LEU:HD23	2.12	0.65
1:B:309:ILE:HG22	1:B:310:ASN:N	2.12	0.65
1:C:166:THR:HA	1:C:169:MET:HE2	1.79	0.65
1:A:40:HIS:HD2	1:A:215:TYR:CE1	2.14	0.65
1:B:101:ILE:H	1:B:101:ILE:CD1	2.10	0.65
1:A:82:GLY:CA	1:A:85:ILE:HG22	2.25	0.65
1:A:270:LEU:HD22	1:A:270:LEU:N	2.12	0.65
1:A:242:GLN:O	1:A:246:VAL:HB	1.97	0.65
1:C:101:ILE:H	1:C:101:ILE:CD1	2.09	0.64
1:C:113:ILE:HB	1:C:227:GLU:HG3	1.77	0.64

Continued on next page...

Continued from previous page...

Atom-1	Atom-2	Distance(Å)	Clash(Å)
1:A:303:LEU:H	1:A:303:LEU:HD22	1.61	0.64
1:B:270:LEU:HD22	1:B:270:LEU:N	2.12	0.64
1:A:97:VAL:CG1	1:A:342:VAL:HG23	2.27	0.64
1:C:242:GLN:O	1:C:246:VAL:HB	1.97	0.64
1:A:6:LYS:C	1:A:7:TYR:HD2	1.91	0.64
1:A:343:LEU:O	1:A:347:LEU:CD1	2.44	0.64
1:B:97:VAL:CG1	1:B:342:VAL:HG23	2.26	0.64
1:B:289:ALA:HB1	1:B:299:TYR:CG	2.33	0.64
1:B:250:LEU:HA	1:B:253:ILE:HG21	1.79	0.64
1:B:329:LEU:N	1:B:329:LEU:HD12	2.12	0.64
1:B:343:LEU:O	1:B:347:LEU:CD1	2.43	0.64
1:C:342:VAL:HG13	1:C:343:LEU:N	2.12	0.64
1:A:50:PHE:O	1:A:54:LEU:CD1	2.45	0.64
1:B:196:LYS:HG2	1:C:168:LEU:HD21	1.79	0.64
1:C:40:HIS:HD2	1:C:215:TYR:CE1	2.14	0.64
1:A:101:ILE:H	1:A:101:ILE:CD1	2.10	0.64
1:A:106:LEU:CD1	1:A:107:PHE:CE1	2.54	0.64
1:C:322:THR:HG21	1:C:341:ILE:HD13	1.80	0.64
1:C:289:ALA:HB1	1:C:299:TYR:CG	2.33	0.64
1:B:299:TYR:CA	1:B:303:LEU:CD2	2.76	0.64
1:C:241:LEU:C	1:C:241:LEU:HD23	2.18	0.64
1:A:335:VAL:HA	1:A:338:GLN:HB3	1.79	0.64
1:C:151:VAL:HG13	1:C:155:ILE:CD1	2.18	0.64
1:C:155:ILE:HG13	1:C:365:MET:HE3	1.77	0.64
1:C:89:TYR:HB3	1:C:310:ASN:HB2	1.78	0.64
1:C:270:LEU:HD22	1:C:270:LEU:N	2.12	0.64
1:C:151:VAL:HG12	1:C:155:ILE:HD13	1.75	0.64
1:C:82:GLY:HA2	1:C:85:ILE:CG2	2.26	0.64
1:A:299:TYR:CA	1:A:303:LEU:CD2	2.76	0.64
1:C:50:PHE:O	1:C:54:LEU:CD1	2.45	0.64
1:A:290:LYS:O	1:A:291:GLU:C	2.36	0.64
1:C:213:ILE:O	1:C:217:MET:HG2	1.98	0.64
1:C:13:LEU:CD2	1:C:13:LEU:C	2.64	0.64
1:C:322:THR:HG21	1:C:341:ILE:CD1	2.28	0.63
1:A:55:CYS:SG	3:A:501:HG:HG	2.16	0.63
1:B:8:ILE:CG1	1:B:15:LYS:CE	2.74	0.63
1:A:199:ASN:OD1	1:A:355:VAL:HG11	1.99	0.63
1:B:50:PHE:O	1:B:54:LEU:CD1	2.46	0.63
1:B:110:GLY:O	1:B:113:ILE:N	2.18	0.63
1:C:335:VAL:HA	1:C:338:GLN:HB3	1.81	0.63
1:C:355:VAL:HG12	1:C:356:PRO:CG	2.28	0.63
1:C:49:LEU:O	1:C:53:LEU:HG	1.99	0.63

Continued on next page...

Continued from previous page...

Atom-1	Atom-2	Distance(Å)	Clash(Å)
1:B:89:TYR:HB3	1:B:310:ASN:HB2	1.80	0.63
1:C:295:SER:OG	1:C:298:ILE:HD13	1.98	0.63
1:A:347:LEU:N	1:A:347:LEU:HD12	2.13	0.63
1:A:355:VAL:HG12	1:A:356:PRO:N	2.11	0.63
1:A:241:LEU:C	1:A:241:LEU:HD23	2.19	0.63
1:A:213:ILE:HD12	1:A:214:ALA:H	1.62	0.63
1:B:363:LEU:O	1:B:366:VAL:CG1	2.47	0.63
1:C:344:THR:HG21	1:C:366:VAL:HA	1.81	0.63
1:A:289:ALA:HB1	1:A:299:TYR:CG	2.34	0.63
1:C:347:LEU:HD12	1:C:347:LEU:N	2.13	0.63
1:A:309:ILE:HG22	1:A:310:ASN:N	2.13	0.63
1:C:245:LEU:C	1:C:245:LEU:CD2	2.65	0.63
1:A:130:LEU:HD12	1:A:133:ILE:HG21	1.81	0.63
1:B:53:LEU:HD23	1:C:138:VAL:HG11	1.80	0.63
1:B:303:LEU:H	1:B:303:LEU:HD22	1.62	0.63
1:A:29:ILE:CG1	1:A:30:LEU:CD1	2.68	0.63
1:A:25:ILE:H	1:A:25:ILE:CD1	2.12	0.63
1:C:150:GLN:HG2	1:C:153:PRO:HG2	1.81	0.62
1:A:82:GLY:O	1:A:85:ILE:HG22	1.99	0.62
1:B:355:VAL:HG12	1:B:356:PRO:CG	2.29	0.62
1:C:252:LYS:HD3	1:C:252:LYS:C	2.18	0.62
1:A:250:LEU:HA	1:A:253:ILE:HG21	1.81	0.62
1:A:213:ILE:O	1:A:217:MET:HG2	1.99	0.62
1:B:241:LEU:HD23	1:B:241:LEU:C	2.19	0.62
1:C:13:LEU:O	1:C:13:LEU:HD23	1.99	0.62
1:A:159:ILE:H	1:A:159:ILE:HD12	1.64	0.62
1:B:242:GLN:O	1:B:246:VAL:HB	1.98	0.62
1:A:13:LEU:HD23	1:A:13:LEU:O	1.99	0.62
1:B:150:GLN:HG2	1:B:153:PRO:HG2	1.80	0.62
1:C:159:ILE:HD12	1:C:159:ILE:H	1.64	0.62
1:B:290:LYS:O	1:B:291:GLU:C	2.36	0.62
1:A:103:MET:HE2	1:A:237:VAL:CG2	2.14	0.62
1:B:13:LEU:O	1:B:13:LEU:HD23	2.00	0.62
1:A:6:LYS:O	1:A:7:TYR:CG	2.53	0.62
1:A:295:SER:OG	1:A:298:ILE:HD13	1.99	0.62
1:A:82:GLY:HA2	1:A:85:ILE:CG2	2.28	0.62
1:C:130:LEU:O	1:C:133:ILE:CG2	2.43	0.62
1:B:342:VAL:HG13	1:B:343:LEU:N	2.13	0.62
1:B:25:ILE:H	1:B:25:ILE:CD1	2.13	0.62
1:C:250:LEU:HA	1:C:253:ILE:HG21	1.81	0.62
1:A:89:TYR:CB	1:A:310:ASN:HB2	2.30	0.62
1:B:28:LEU:HD22	1:B:28:LEU:N	2.14	0.62

Continued on next page...

Continued from previous page...

Atom-1	Atom-2	Distance(Å)	Clash(Å)
1:B:54:LEU:N	1:B:54:LEU:CD1	2.62	0.62
1:A:28:LEU:N	1:A:28:LEU:HD22	2.15	0.62
1:B:196:LYS:HD2	1:C:168:LEU:HD23	1.81	0.62
1:B:47:GLY:O	1:B:51:VAL:HG23	2.00	0.62
1:C:151:VAL:O	1:C:152:LEU:C	2.38	0.61
1:A:252:LYS:C	1:A:252:LYS:HD3	2.18	0.61
1:B:334:THR:N	1:B:337:GLN:NE2	2.44	0.61
1:C:363:LEU:O	1:C:366:VAL:CG1	2.47	0.61
1:A:355:VAL:HG12	1:A:356:PRO:CG	2.29	0.61
1:B:82:GLY:HA2	1:B:85:ILE:CG2	2.28	0.61
1:A:245:LEU:C	1:A:245:LEU:CD2	2.66	0.61
1:B:6:LYS:O	1:B:7:TYR:CG	2.53	0.61
1:A:47:GLY:O	1:A:51:VAL:HG23	2.00	0.61
1:C:299:TYR:CA	1:C:303:LEU:CD2	2.76	0.61
1:A:49:LEU:O	1:A:53:LEU:HG	1.99	0.61
1:B:10:TYR:CB	1:B:11:PRO:HD2	2.21	0.61
1:C:289:ALA:HA	1:C:294:ILE:HD12	1.82	0.61
1:C:82:GLY:O	1:C:85:ILE:HG22	2.00	0.61
1:C:6:LYS:O	1:C:7:TYR:CG	2.53	0.61
1:B:130:LEU:HD12	1:B:133:ILE:HG21	1.82	0.61
1:C:47:GLY:O	1:C:51:VAL:HG23	1.99	0.61
1:B:213:ILE:O	1:B:217:MET:HG2	2.00	0.61
1:C:25:ILE:H	1:C:25:ILE:CD1	2.14	0.61
1:C:117:VAL:HG13	1:C:378:ASN:OD1	2.00	0.61
1:A:151:VAL:O	1:A:152:LEU:C	2.38	0.61
1:A:344:THR:HG21	1:A:366:VAL:HA	1.83	0.61
1:B:335:VAL:HA	1:B:338:GLN:HB3	1.81	0.61
1:B:347:LEU:N	1:B:347:LEU:HD12	2.15	0.61
1:C:270:LEU:H	1:C:270:LEU:CD2	2.14	0.61
1:C:121:GLN:HG2	1:C:122:PHE:N	2.16	0.61
1:C:36:ALA:O	1:C:39:VAL:N	2.33	0.61
1:C:89:TYR:CB	1:C:310:ASN:HB2	2.30	0.61
1:A:36:ALA:O	1:A:39:VAL:N	2.33	0.61
1:A:89:TYR:CE1	1:A:310:ASN:ND2	2.42	0.61
1:A:247:TYR:HD1	1:A:407:THR:CG2	2.13	0.61
1:A:115:LEU:HD23	1:A:115:LEU:N	2.15	0.61
1:B:39:VAL:HG13	1:B:43:VAL:HB	1.83	0.61
1:B:82:GLY:O	1:B:85:ILE:HG22	1.99	0.61
1:C:28:LEU:HD22	1:C:28:LEU:N	2.15	0.61
1:B:295:SER:OG	1:B:298:ILE:HD13	1.99	0.61
1:B:151:VAL:O	1:B:152:LEU:C	2.38	0.61
1:B:411:ILE:N	1:B:411:ILE:CD1	2.64	0.61

Continued on next page...

Continued from previous page...

Atom-1	Atom-2	Distance(Å)	Clash(Å)
1:B:121:GLN:HG2	1:B:122:PHE:N	2.16	0.61
1:B:165:ILE:HG21	1:B:184:LEU:HB2	1.82	0.61
1:B:14:GLN:N	1:B:14:GLN:OE1	2.32	0.61
1:B:152:LEU:HD11	1:B:369:SER:HB3	1.82	0.60
1:A:270:LEU:CD2	1:A:270:LEU:H	2.14	0.60
1:B:151:VAL:HG13	1:B:155:ILE:CD1	2.21	0.60
1:A:289:ALA:HA	1:A:294:ILE:HD12	1.83	0.60
1:C:199:ASN:OD1	1:C:355:VAL:HG11	2.00	0.60
1:B:270:LEU:CD2	1:B:270:LEU:H	2.14	0.60
1:C:165:ILE:HG21	1:C:184:LEU:HB2	1.84	0.60
1:A:333:LEU:H	1:A:333:LEU:HD12	1.66	0.60
1:C:152:LEU:HD11	1:C:369:SER:HB3	1.83	0.60
1:C:50:PHE:HE1	1:C:205:ALA:HA	1.67	0.60
1:C:130:LEU:HD12	1:C:133:ILE:HG21	1.83	0.60
1:B:216:VAL:O	1:B:219:GLU:O	2.19	0.60
1:B:49:LEU:O	1:B:53:LEU:HG	2.01	0.60
1:A:322:THR:HG21	1:A:341:ILE:HD13	1.84	0.60
1:B:322:THR:HG21	1:B:341:ILE:HD13	1.83	0.60
1:C:195:TYR:CE1	1:C:353:ALA:HB1	2.26	0.60
1:B:28:LEU:HD22	1:B:28:LEU:H	1.67	0.60
1:A:236:TYR:C	1:A:238:GLY:H	2.04	0.60
1:A:363:LEU:O	1:A:366:VAL:CG1	2.49	0.60
1:C:106:LEU:HD13	1:C:107:PHE:CD1	2.29	0.60
1:B:173:ASN:ND2	1:B:176:VAL:HG23	2.16	0.60
1:C:374:LEU:N	1:C:374:LEU:CD1	2.65	0.60
1:A:150:GLN:HG2	1:A:153:PRO:HG2	1.84	0.60
1:A:152:LEU:HD11	1:A:369:SER:HB3	1.84	0.60
1:B:289:ALA:HA	1:B:294:ILE:HD12	1.83	0.60
1:B:196:LYS:HD2	1:C:168:LEU:CD2	2.32	0.60
1:A:173:ASN:ND2	1:A:176:VAL:HG23	2.16	0.60
1:A:195:TYR:CE1	1:A:353:ALA:HB1	2.28	0.60
1:C:236:TYR:C	1:C:238:GLY:H	2.05	0.60
1:C:411:ILE:CD1	1:C:411:ILE:N	2.65	0.60
1:B:303:LEU:N	1:B:304:PRO:HD2	2.17	0.60
1:B:182:THR:O	1:B:185:ASP:HB3	2.02	0.60
1:B:322:THR:HG21	1:B:341:ILE:CD1	2.32	0.59
1:C:335:VAL:O	1:C:335:VAL:HG13	2.02	0.59
1:A:117:VAL:HG13	1:A:378:ASN:OD1	2.03	0.59
1:C:286:MET:O	1:C:289:ALA:HB3	2.02	0.59
1:A:14:GLN:OE1	1:A:14:GLN:N	2.33	0.59
1:B:159:ILE:H	1:B:159:ILE:HD12	1.66	0.59
1:B:344:THR:HG21	1:B:366:VAL:HA	1.84	0.59

Continued on next page...

Continued from previous page...

Atom-1	Atom-2	Distance(Å)	Clash(Å)
1:A:121:GLN:HG2	1:A:122:PHE:N	2.16	0.59
1:C:216:VAL:O	1:C:219:GLU:O	2.20	0.59
1:C:278:SER:HB2	2:C:500:ASP:O	2.02	0.59
1:A:303:LEU:N	1:A:304:PRO:HD2	2.18	0.59
1:A:374:LEU:N	1:A:374:LEU:CD1	2.66	0.59
1:B:374:LEU:N	1:B:374:LEU:CD1	2.65	0.59
1:B:252:LYS:HD3	1:B:252:LYS:C	2.18	0.59
1:C:173:ASN:ND2	1:C:176:VAL:HG23	2.16	0.59
1:A:152:LEU:HB2	1:A:153:PRO:HD3	1.85	0.59
1:C:86:VAL:O	1:C:90:LEU:HD13	2.03	0.59
1:B:86:VAL:O	1:B:90:LEU:HD13	2.02	0.59
1:A:213:ILE:CD1	1:A:213:ILE:C	2.71	0.59
1:A:25:ILE:N	1:A:25:ILE:CD1	2.65	0.59
1:A:57:LEU:CD2	1:A:194:MET:CE	2.79	0.59
1:A:165:ILE:HG21	1:A:184:LEU:HB2	1.85	0.59
1:A:335:VAL:HG13	1:A:335:VAL:O	2.02	0.59
1:A:322:THR:HG21	1:A:341:ILE:CD1	2.33	0.59
1:B:230:LYS:C	1:B:230:LYS:HD3	2.23	0.59
1:B:199:ASN:OD1	1:B:355:VAL:HG11	2.01	0.59
1:B:89:TYR:CB	1:B:310:ASN:HB2	2.32	0.59
1:B:25:ILE:N	1:B:25:ILE:CD1	2.66	0.59
1:B:333:LEU:HD12	1:B:333:LEU:H	1.67	0.59
1:C:88:TYR:O	1:C:92:THR:HG23	2.03	0.59
1:B:36:ALA:O	1:B:39:VAL:N	2.34	0.59
1:A:411:ILE:N	1:A:411:ILE:CD1	2.64	0.59
1:C:213:ILE:CD1	1:C:213:ILE:C	2.72	0.59
1:C:28:LEU:HD22	1:C:28:LEU:H	1.67	0.59
1:C:247:TYR:HD1	1:C:407:THR:CG2	2.13	0.59
1:A:74:SER:HB2	1:A:166:THR:HG21	1.84	0.59
1:C:303:LEU:N	1:C:304:PRO:HD2	2.18	0.59
1:B:193:ALA:HA	1:C:168:LEU:HD11	1.84	0.59
1:C:99:LEU:O	1:C:99:LEU:HD23	2.03	0.58
1:A:286:MET:O	1:A:289:ALA:HB3	2.03	0.58
1:B:50:PHE:HE1	1:B:205:ALA:HA	1.68	0.58
1:A:28:LEU:HD22	1:A:28:LEU:H	1.69	0.58
1:B:236:TYR:C	1:B:238:GLY:H	2.05	0.58
1:B:364:CYS:SG	1:B:374:LEU:CD2	2.90	0.58
1:C:57:LEU:CD2	1:C:194:MET:CE	2.80	0.58
1:C:314:THR:O	1:C:317:TYR:HB3	2.03	0.58
1:A:39:VAL:HG13	1:A:43:VAL:HB	1.86	0.58
1:A:99:LEU:HD23	1:A:99:LEU:O	2.03	0.58
1:C:117:VAL:CG2	1:C:118:GLY:N	2.57	0.58

Continued on next page...

Continued from previous page...

Atom-1	Atom-2	Distance(Å)	Clash(Å)
1:B:335:VAL:O	1:B:335:VAL:HG13	2.03	0.58
1:A:236:TYR:C	1:A:238:GLY:N	2.57	0.58
1:C:54:LEU:N	1:C:54:LEU:CD1	2.65	0.58
1:A:256:ILE:O	1:A:258:PRO:HD3	2.04	0.58
1:A:182:THR:O	1:A:185:ASP:HB3	2.03	0.58
1:C:339:LEU:C	1:C:339:LEU:HD12	2.24	0.58
1:A:57:LEU:HD22	1:A:194:MET:CE	2.27	0.58
1:C:78:LEU:CD1	1:C:86:VAL:HG21	2.34	0.58
1:B:286:MET:O	1:B:289:ALA:HB3	2.03	0.58
1:B:303:LEU:HD22	1:B:303:LEU:N	2.19	0.58
1:B:316:LEU:HD23	1:B:316:LEU:C	2.24	0.58
1:A:196:LYS:CA	1:A:196:LYS:CE	2.75	0.58
1:C:39:VAL:HG13	1:C:43:VAL:HB	1.86	0.58
1:A:303:LEU:N	1:A:303:LEU:HD22	2.18	0.58
1:C:253:ILE:HG23	1:C:254:TYR:CD2	2.39	0.58
1:C:152:LEU:HB2	1:C:153:PRO:HD3	1.85	0.57
1:B:195:TYR:HE1	1:B:353:ALA:CB	1.77	0.57
1:A:352:THR:HG23	1:A:358:ALA:CB	2.24	0.57
1:B:247:TYR:HD1	1:B:407:THR:CG2	2.14	0.57
1:A:101:ILE:CD1	1:A:101:ILE:N	2.66	0.57
1:A:149:GLY:H	1:B:141:ASN:ND2	2.01	0.57
1:B:254:TYR:CD2	1:B:411:ILE:HG23	2.40	0.57
1:C:74:SER:HB2	1:C:166:THR:HG21	1.85	0.57
1:B:314:THR:O	1:B:317:TYR:HB3	2.04	0.57
1:B:245:LEU:C	1:B:245:LEU:CD2	2.65	0.57
1:B:213:ILE:CD1	1:B:213:ILE:C	2.72	0.57
1:A:253:ILE:HG23	1:A:254:TYR:CD2	2.39	0.57
1:C:25:ILE:N	1:C:25:ILE:CD1	2.66	0.57
1:A:86:VAL:O	1:A:90:LEU:HD13	2.03	0.57
1:A:54:LEU:N	1:A:54:LEU:CD1	2.65	0.57
1:C:256:ILE:O	1:C:258:PRO:HD3	2.05	0.57
1:C:374:LEU:H	1:C:374:LEU:CD1	2.18	0.57
1:B:74:SER:HB2	1:B:166:THR:HG21	1.85	0.57
1:B:152:LEU:HD11	1:B:369:SER:CB	2.34	0.57
1:A:178:LYS:HE2	1:C:185:ASP:OD1	2.03	0.57
1:B:12:VAL:O	1:B:16:ILE:HG13	2.05	0.57
1:B:152:LEU:HB2	1:B:153:PRO:HD3	1.86	0.57
1:C:159:ILE:CD1	1:C:159:ILE:H	2.18	0.57
1:A:290:LYS:CE	1:A:299:TYR:OH	2.52	0.57
1:B:250:LEU:CA	1:B:253:ILE:CG2	2.82	0.57
1:B:196:LYS:CA	1:B:196:LYS:CE	2.74	0.57
1:B:117:VAL:CG2	1:B:118:GLY:H	1.93	0.57

Continued on next page...

Continued from previous page...

Atom-1	Atom-2	Distance(Å)	Clash(Å)
1:A:40:HIS:CD2	1:A:215:TYR:CE1	2.93	0.57
1:C:40:HIS:CD2	1:C:215:TYR:CE1	2.92	0.57
1:A:138:VAL:HG11	1:C:53:LEU:HD23	1.85	0.57
1:A:72:SER:O	1:A:73:ILE:CG1	2.53	0.57
1:A:88:TYR:O	1:A:92:THR:HG23	2.04	0.57
1:B:374:LEU:CD1	1:B:374:LEU:H	2.17	0.57
1:B:117:VAL:HG13	1:B:378:ASN:OD1	2.05	0.57
1:C:364:CYS:SG	1:C:374:LEU:CD2	2.93	0.57
1:A:152:LEU:O	1:A:153:PRO:C	2.42	0.57
1:A:152:LEU:HD11	1:A:369:SER:CB	2.35	0.57
1:C:303:LEU:HD22	1:C:303:LEU:N	2.19	0.57
1:B:290:LYS:CE	1:B:299:TYR:OH	2.53	0.57
1:B:72:SER:O	1:B:73:ILE:CG1	2.52	0.57
1:B:256:ILE:O	1:B:258:PRO:HD3	2.05	0.57
1:A:216:VAL:O	1:A:219:GLU:O	2.21	0.57
1:B:40:HIS:CD2	1:B:215:TYR:CE1	2.92	0.57
1:A:339:LEU:C	1:A:339:LEU:HD12	2.25	0.57
1:B:97:VAL:O	1:B:101:ILE:HD12	2.05	0.57
1:C:152:LEU:HD11	1:C:369:SER:CB	2.34	0.57
1:B:99:LEU:HD23	1:B:99:LEU:O	2.05	0.57
1:A:242:GLN:HG3	1:A:247:TYR:HE2	1.69	0.57
1:C:290:LYS:CE	1:C:299:TYR:OH	2.53	0.56
1:A:185:ASP:OD1	1:B:182:THR:HG21	2.04	0.56
1:C:196:LYS:CE	1:C:196:LYS:CA	2.76	0.56
1:C:182:THR:O	1:C:185:ASP:HB3	2.04	0.56
1:C:166:THR:HA	1:C:169:MET:HE1	1.87	0.56
1:A:333:LEU:CD1	1:A:333:LEU:H	2.19	0.56
1:B:339:LEU:C	1:B:339:LEU:HD12	2.25	0.56
1:C:155:ILE:O	1:C:159:ILE:CD1	2.53	0.56
1:C:97:VAL:HG13	1:C:342:VAL:HG23	1.87	0.56
1:A:159:ILE:CD1	1:A:159:ILE:H	2.19	0.56
1:C:333:LEU:HD12	1:C:333:LEU:H	1.68	0.56
1:A:72:SER:C	1:A:73:ILE:HG13	2.26	0.56
1:A:278:SER:HB2	2:A:500:ASP:O	2.04	0.56
1:B:236:TYR:C	1:B:238:GLY:N	2.57	0.56
1:A:196:LYS:CG	1:B:168:LEU:CD2	2.84	0.56
1:C:12:VAL:O	1:C:16:ILE:HG13	2.05	0.56
1:A:113:ILE:HG23	1:A:328:ALA:HA	1.87	0.56
1:A:247:TYR:OH	1:A:312:ASP:OD1	2.22	0.56
1:C:316:LEU:C	1:C:316:LEU:HD23	2.24	0.56
1:B:253:ILE:HG23	1:B:254:TYR:CD2	2.41	0.56
1:A:364:CYS:SG	1:A:374:LEU:CD2	2.92	0.56

Continued on next page...

Continued from previous page...

Atom-1	Atom-2	Distance(Å)	Clash(Å)
1:B:117:VAL:CG2	1:B:118:GLY:N	2.57	0.56
1:B:178:LYS:CD	1:B:178:LYS:C	2.74	0.56
1:C:107:PHE:CB	1:C:230:LYS:HE2	2.31	0.56
1:A:254:TYR:CD2	1:A:411:ILE:HG23	2.41	0.56
1:B:242:GLN:HG3	1:B:247:TYR:HE2	1.71	0.56
1:B:247:TYR:O	1:B:251:LEU:HG	2.05	0.56
1:B:103:MET:HE1	1:B:237:VAL:CG2	2.27	0.56
1:B:64:ALA:HB1	1:B:191:ALA:HB2	1.87	0.56
1:A:314:THR:O	1:A:317:TYR:HB3	2.04	0.56
1:B:88:TYR:O	1:B:92:THR:HG23	2.06	0.56
1:C:254:TYR:CD2	1:C:411:ILE:HG23	2.40	0.56
1:C:10:TYR:CB	1:C:11:PRO:HD2	2.21	0.56
1:B:74:SER:OG	1:B:166:THR:CG2	2.50	0.56
1:B:282:LEU:N	1:B:283:PRO:CD	2.68	0.56
1:B:72:SER:C	1:B:73:ILE:HG13	2.26	0.56
1:B:90:LEU:HD12	1:B:90:LEU:N	2.21	0.56
1:A:209:VAL:O	1:A:213:ILE:HG13	2.06	0.56
1:A:316:LEU:HD23	1:A:316:LEU:C	2.25	0.56
1:B:269:MET:HB3	1:B:399:MET:CE	2.36	0.56
1:A:282:LEU:N	1:A:283:PRO:CD	2.68	0.56
1:A:302:THR:C	1:A:304:PRO:HD2	2.26	0.56
1:A:8:ILE:HG12	1:A:15:LYS:HE3	1.74	0.56
1:A:151:VAL:HG13	1:A:155:ILE:CD1	2.22	0.56
1:B:363:LEU:HD12	1:B:366:VAL:HG11	1.87	0.56
1:C:113:ILE:HD11	1:C:385:MET:CE	2.36	0.56
1:C:113:ILE:HD11	1:C:385:MET:HE1	1.88	0.56
1:B:278:SER:HB2	2:B:500:ASP:O	2.05	0.56
1:C:289:ALA:O	1:C:294:ILE:HG13	2.06	0.56
1:C:236:TYR:C	1:C:238:GLY:N	2.58	0.56
1:C:117:VAL:CG2	1:C:118:GLY:H	1.93	0.56
1:C:14:GLN:OE1	1:C:14:GLN:N	2.36	0.56
1:B:113:ILE:HG23	1:B:328:ALA:HA	1.86	0.55
1:C:106:LEU:C	1:C:106:LEU:HD12	2.25	0.55
1:C:230:LYS:C	1:C:230:LYS:HD3	2.24	0.55
1:C:290:LYS:C	1:C:292:MET:N	2.60	0.55
1:A:12:VAL:O	1:A:16:ILE:HG13	2.06	0.55
1:C:117:VAL:HG21	1:C:377:PRO:HB2	1.88	0.55
1:A:130:LEU:C	1:A:133:ILE:HG22	2.27	0.55
1:C:372:LEU:N	1:C:373:PRO:HD3	2.21	0.55
1:A:64:ALA:HB1	1:A:191:ALA:HB2	1.87	0.55
1:B:289:ALA:O	1:B:294:ILE:HG13	2.06	0.55
1:B:302:THR:C	1:B:304:PRO:HD2	2.27	0.55

Continued on next page...

Continued from previous page...

Atom-1	Atom-2	Distance(Å)	Clash(Å)
1:A:99:LEU:C	1:A:99:LEU:HD23	2.27	0.55
1:A:11:PRO:O	1:A:13:LEU:N	2.40	0.55
1:C:374:LEU:O	1:C:380:ALA:HB2	2.07	0.55
1:C:282:LEU:N	1:C:283:PRO:CD	2.68	0.55
1:A:230:LYS:HD3	1:A:230:LYS:C	2.24	0.55
1:A:363:LEU:HD12	1:A:366:VAL:HG11	1.88	0.55
1:C:343:LEU:CD1	1:C:343:LEU:C	2.75	0.55
1:A:78:LEU:CD1	1:A:86:VAL:HG21	2.35	0.55
1:B:78:LEU:CD1	1:B:86:VAL:HG21	2.36	0.55
1:C:209:VAL:O	1:C:213:ILE:HG13	2.06	0.55
1:A:106:LEU:HD13	1:A:107:PHE:CD1	2.29	0.55
1:A:113:ILE:HD11	1:A:385:MET:CE	2.37	0.55
1:B:97:VAL:HG13	1:B:98:THR:N	2.21	0.55
1:B:83:VAL:O	1:B:87:VAL:HG23	2.06	0.55
1:B:56:MET:HE2	1:C:157:PHE:CD1	2.34	0.55
1:A:178:LYS:HE2	1:A:182:THR:HG21	1.88	0.55
1:B:11:PRO:O	1:B:13:LEU:N	2.39	0.55
1:A:290:LYS:C	1:A:292:MET:N	2.60	0.55
1:A:83:VAL:O	1:A:87:VAL:HG23	2.06	0.55
1:A:178:LYS:C	1:A:178:LYS:CD	2.74	0.55
1:C:178:LYS:C	1:C:178:LYS:CD	2.73	0.55
1:A:74:SER:OG	1:A:166:THR:CG2	2.51	0.55
1:C:113:ILE:HG23	1:C:328:ALA:HA	1.86	0.55
1:A:56:MET:HE2	1:B:157:PHE:HD1	1.66	0.55
1:B:281:THR:CG2	1:B:281:THR:O	2.54	0.55
1:B:159:ILE:H	1:B:159:ILE:CD1	2.20	0.55
1:C:90:LEU:HD12	1:C:90:LEU:N	2.22	0.55
1:A:43:VAL:C	1:A:45:PRO:HD2	2.27	0.55
1:C:242:GLN:HG3	1:C:247:TYR:HE2	1.71	0.55
1:C:75:PRO:O	1:C:167:TYR:OH	2.25	0.55
1:A:333:LEU:CD1	1:A:333:LEU:N	2.70	0.55
1:A:64:ALA:HB3	1:A:191:ALA:HB2	1.88	0.55
1:C:72:SER:O	1:C:73:ILE:CG1	2.55	0.55
1:B:209:VAL:O	1:B:213:ILE:HG13	2.07	0.55
1:A:374:LEU:CD1	1:A:374:LEU:H	2.19	0.55
1:C:74:SER:OG	1:C:166:THR:CG2	2.52	0.55
1:C:269:MET:HB3	1:C:399:MET:CE	2.37	0.55
1:A:333:LEU:HD23	1:A:341:ILE:HD11	1.89	0.55
1:A:97:VAL:HG13	1:A:342:VAL:HG23	1.89	0.55
1:C:152:LEU:O	1:C:153:PRO:C	2.43	0.55
1:C:64:ALA:HB1	1:C:191:ALA:HB2	1.89	0.55
1:A:303:LEU:CD2	1:A:303:LEU:H	2.19	0.55

Continued on next page...

Continued from previous page...

Atom-1	Atom-2	Distance(Å)	Clash(Å)
1:A:372:LEU:N	1:A:373:PRO:HD3	2.22	0.55
1:A:154:THR:O	1:A:155:ILE:C	2.43	0.55
1:C:83:VAL:O	1:C:87:VAL:HG23	2.07	0.55
1:B:299:TYR:CB	1:B:303:LEU:HD21	2.37	0.55
1:B:299:TYR:O	1:B:303:LEU:HD23	2.07	0.55
1:C:8:ILE:HG13	1:C:15:LYS:HE3	1.89	0.55
1:A:106:LEU:HD12	1:A:106:LEU:C	2.25	0.54
1:B:113:ILE:HD11	1:B:385:MET:CE	2.36	0.54
1:B:333:LEU:H	1:B:333:LEU:CD1	2.19	0.54
1:C:299:TYR:O	1:C:303:LEU:HD23	2.07	0.54
1:A:90:LEU:N	1:A:90:LEU:HD12	2.22	0.54
1:B:117:VAL:HG21	1:B:377:PRO:HB2	1.89	0.54
1:B:183:LEU:HD23	1:B:183:LEU:O	2.07	0.54
1:B:57:LEU:CD2	1:B:194:MET:CE	2.81	0.54
1:B:67:VAL:HG11	1:B:187:ILE:HD13	1.88	0.54
1:A:343:LEU:CD1	1:A:343:LEU:C	2.75	0.54
1:B:152:LEU:O	1:B:153:PRO:C	2.44	0.54
1:C:333:LEU:CD1	1:C:333:LEU:H	2.20	0.54
1:A:57:LEU:HD23	1:A:194:MET:HE3	1.86	0.54
1:C:11:PRO:O	1:C:13:LEU:N	2.41	0.54
1:A:107:PHE:CB	1:A:230:LYS:HE2	2.30	0.54
1:C:289:ALA:O	1:C:294:ILE:CG1	2.55	0.54
1:C:67:VAL:HG11	1:C:187:ILE:HD13	1.88	0.54
1:C:281:THR:CG2	1:C:281:THR:O	2.55	0.54
1:B:155:ILE:O	1:B:159:ILE:CD1	2.55	0.54
1:B:333:LEU:HD23	1:B:341:ILE:HD11	1.90	0.54
1:C:303:LEU:CD2	1:C:303:LEU:H	2.20	0.54
1:B:289:ALA:O	1:B:294:ILE:CG1	2.55	0.54
1:A:155:ILE:O	1:A:159:ILE:CD1	2.56	0.54
1:B:154:THR:O	1:B:155:ILE:C	2.44	0.54
1:C:72:SER:C	1:C:73:ILE:HG13	2.27	0.54
1:B:311:MET:HE1	2:B:500:ASP:HB2	1.88	0.54
1:B:90:LEU:HD12	1:B:90:LEU:H	1.72	0.54
1:C:254:TYR:CG	1:C:411:ILE:HG23	2.43	0.54
1:B:372:LEU:N	1:B:373:PRO:HD3	2.22	0.54
1:B:352:THR:HG23	1:B:358:ALA:CB	2.27	0.54
1:B:303:LEU:H	1:B:303:LEU:CD2	2.20	0.54
1:B:309:ILE:HG22	1:B:310:ASN:H	1.73	0.54
1:B:72:SER:O	1:B:73:ILE:HG13	2.07	0.54
1:A:50:PHE:HE1	1:A:205:ALA:HA	1.67	0.54
1:A:374:LEU:O	1:A:380:ALA:HB2	2.06	0.54
1:A:168:LEU:HD11	1:C:193:ALA:HA	1.90	0.54

Continued on next page...

Continued from previous page...

Atom-1	Atom-2	Distance(Å)	Clash(Å)
1:C:160:ILE:CD1	1:C:160:ILE:N	2.70	0.54
1:C:364:CYS:O	1:C:368:HIS:HD2	1.91	0.54
1:B:130:LEU:C	1:B:133:ILE:HG22	2.27	0.54
1:A:334:THR:HG22	1:A:337:GLN:CD	2.28	0.54
1:A:82:GLY:O	1:A:83:VAL:C	2.46	0.54
1:A:247:TYR:O	1:A:251:LEU:HG	2.07	0.54
1:B:166:THR:HA	1:B:169:MET:HE2	1.89	0.54
1:C:333:LEU:HD23	1:C:341:ILE:HD11	1.90	0.54
1:C:311:MET:HE1	2:C:500:ASP:HB2	1.89	0.54
1:C:309:ILE:HG22	1:C:310:ASN:H	1.73	0.54
1:A:8:ILE:HG13	1:A:15:LYS:HE3	1.89	0.54
1:C:178:LYS:HE2	1:C:182:THR:HG21	1.89	0.54
1:A:333:LEU:C	1:A:337:GLN:HE21	2.11	0.54
1:A:299:TYR:O	1:A:303:LEU:HD23	2.08	0.54
1:A:334:THR:HG23	1:A:334:THR:O	2.08	0.54
1:A:97:VAL:HG11	1:A:342:VAL:HG23	1.90	0.54
1:A:347:LEU:H	1:A:347:LEU:HD12	1.74	0.54
1:C:90:LEU:HD12	1:C:90:LEU:H	1.72	0.54
1:A:90:LEU:H	1:A:90:LEU:HD12	1.73	0.54
1:C:247:TYR:O	1:C:251:LEU:HG	2.07	0.54
1:C:59:MET:HB2	1:C:60:PRO:HD3	1.90	0.54
1:A:157:PHE:CD1	1:C:56:MET:HE1	2.41	0.54
1:C:43:VAL:C	1:C:45:PRO:HD2	2.27	0.53
1:C:287:ARG:O	1:C:291:GLU:HG3	2.08	0.53
1:C:99:LEU:C	1:C:99:LEU:HD23	2.27	0.53
1:B:239:LEU:O	1:B:242:GLN:HB3	2.08	0.53
1:A:117:VAL:HG21	1:A:377:PRO:HB2	1.89	0.53
1:B:333:LEU:N	1:B:333:LEU:CD1	2.70	0.53
1:B:334:THR:HG22	1:B:337:GLN:CD	2.29	0.53
1:C:347:LEU:H	1:C:347:LEU:HD12	1.73	0.53
1:C:355:VAL:H	1:C:358:ALA:HB2	1.73	0.53
1:A:374:LEU:HD12	1:A:374:LEU:H	1.73	0.53
1:A:371:GLY:O	1:A:372:LEU:HD23	2.09	0.53
1:A:97:VAL:HG13	1:A:98:THR:N	2.23	0.53
1:B:334:THR:O	1:B:334:THR:HG23	2.08	0.53
1:C:97:VAL:HG11	1:C:342:VAL:HG23	1.89	0.53
1:C:302:THR:C	1:C:304:PRO:HD2	2.28	0.53
1:B:43:VAL:C	1:B:45:PRO:HD2	2.28	0.53
1:A:289:ALA:O	1:A:294:ILE:HG13	2.08	0.53
1:B:359:GLY:HA3	1:B:397:ARG:NH1	2.23	0.53
1:B:254:TYR:CG	1:B:411:ILE:HG23	2.43	0.53
1:A:122:PHE:HD1	1:A:376:ASP:OD2	1.92	0.53

Continued on next page...

Continued from previous page...

Atom-1	Atom-2	Distance(Å)	Clash(Å)
1:B:333:LEU:C	1:B:337:GLN:HE21	2.11	0.53
1:B:97:VAL:HG11	1:B:342:VAL:HG23	1.89	0.53
1:C:82:GLY:O	1:C:83:VAL:C	2.46	0.53
1:B:374:LEU:O	1:B:380:ALA:HB2	2.08	0.53
1:A:269:MET:HB3	1:A:399:MET:CE	2.38	0.53
1:B:347:LEU:H	1:B:347:LEU:HD12	1.74	0.53
1:A:359:GLY:HA3	1:A:397:ARG:NH1	2.23	0.53
1:B:374:LEU:H	1:B:374:LEU:HD12	1.71	0.53
1:C:122:PHE:HD1	1:C:376:ASP:OD2	1.92	0.53
1:C:231:VAL:CG2	1:C:324:PHE:CE1	2.92	0.53
1:C:333:LEU:CD1	1:C:333:LEU:N	2.70	0.53
1:B:352:THR:HG22	1:B:354:GLY:H	1.74	0.53
1:B:99:LEU:HD23	1:B:99:LEU:C	2.29	0.53
1:A:56:MET:HE2	1:B:157:PHE:CD1	2.41	0.53
1:C:363:LEU:HD12	1:C:366:VAL:HG11	1.88	0.53
1:A:303:LEU:N	1:A:304:PRO:CD	2.72	0.53
1:B:287:ARG:O	1:B:291:GLU:HG3	2.09	0.53
1:B:82:GLY:O	1:B:83:VAL:C	2.47	0.53
1:A:250:LEU:CA	1:A:253:ILE:CG2	2.84	0.53
1:B:364:CYS:O	1:B:368:HIS:HD2	1.92	0.53
1:B:298:ILE:N	1:B:298:ILE:CD1	2.72	0.53
1:C:359:GLY:HA3	1:C:397:ARG:NH1	2.24	0.53
1:B:160:ILE:N	1:B:160:ILE:CD1	2.72	0.53
1:B:67:VAL:HG11	1:B:187:ILE:CD1	2.39	0.53
1:A:339:LEU:C	1:A:342:VAL:HG12	2.29	0.53
1:A:285:THR:CG2	1:A:406:LEU:HD21	2.39	0.53
1:A:299:TYR:HB2	1:A:303:LEU:HD21	1.88	0.53
1:A:72:SER:O	1:A:73:ILE:HG13	2.08	0.53
1:C:239:LEU:O	1:C:242:GLN:HB3	2.09	0.53
1:A:67:VAL:HG11	1:A:187:ILE:HD13	1.91	0.53
1:B:183:LEU:C	1:B:183:LEU:CD2	2.77	0.53
1:B:97:VAL:HG13	1:B:342:VAL:HG23	1.89	0.53
1:C:154:THR:O	1:C:155:ILE:C	2.45	0.53
1:C:334:THR:HG22	1:C:337:GLN:CD	2.29	0.53
1:C:334:THR:HG23	1:C:334:THR:O	2.09	0.52
1:C:286:MET:HA	1:C:289:ALA:HB2	1.91	0.52
1:A:160:ILE:CD1	1:A:160:ILE:N	2.72	0.52
1:C:67:VAL:HG11	1:C:187:ILE:CD1	2.40	0.52
1:B:272:ALA:HB2	1:B:281:THR:HG21	1.91	0.52
1:C:326:ALA:HB2	1:C:333:LEU:HD11	1.84	0.52
1:C:299:TYR:CB	1:C:303:LEU:HD21	2.38	0.52
1:B:355:VAL:H	1:B:358:ALA:HB2	1.74	0.52

Continued on next page...

Continued from previous page...

Atom-1	Atom-2	Distance(Å)	Clash(Å)
1:A:364:CYS:O	1:A:368:HIS:HD2	1.92	0.52
1:C:183:LEU:C	1:C:183:LEU:CD2	2.78	0.52
1:C:183:LEU:HD23	1:C:183:LEU:O	2.09	0.52
1:B:106:LEU:HD12	1:B:106:LEU:C	2.26	0.52
1:A:409:THR:O	1:A:412:VAL:HG12	2.10	0.52
1:B:78:LEU:CD2	1:B:78:LEU:N	2.72	0.52
1:A:254:TYR:CG	1:A:411:ILE:HG23	2.44	0.52
1:C:371:GLY:O	1:C:372:LEU:HD23	2.09	0.52
1:A:272:ALA:HB2	1:A:281:THR:HG21	1.90	0.52
1:C:40:HIS:CD2	1:C:215:TYR:HE1	2.27	0.52
1:A:183:LEU:C	1:A:183:LEU:CD2	2.77	0.52
1:A:59:MET:HB2	1:A:60:PRO:HD3	1.90	0.52
1:C:329:LEU:HD21	1:C:379:VAL:HG22	1.92	0.52
1:B:40:HIS:CD2	1:B:215:TYR:HE1	2.27	0.52
1:A:40:HIS:CD2	1:A:215:TYR:HE1	2.27	0.52
1:A:286:MET:HA	1:A:289:ALA:HB2	1.91	0.52
1:A:289:ALA:O	1:A:294:ILE:CG1	2.57	0.52
1:A:311:MET:HE1	2:A:500:ASP:HB2	1.91	0.52
1:C:103:MET:HE1	1:C:237:VAL:CG2	2.33	0.52
1:B:59:MET:HB2	1:B:60:PRO:HD3	1.91	0.52
1:A:299:TYR:CB	1:A:303:LEU:HD21	2.38	0.52
1:B:303:LEU:N	1:B:304:PRO:CD	2.72	0.52
1:C:30:LEU:N	1:C:30:LEU:CD1	2.73	0.52
1:A:11:PRO:O	1:A:12:VAL:C	2.47	0.52
1:B:329:LEU:HD21	1:B:379:VAL:HG22	1.91	0.52
1:B:107:PHE:O	1:B:109:PRO:CD	2.55	0.52
1:C:97:VAL:HG13	1:C:98:THR:N	2.24	0.52
1:C:303:LEU:N	1:C:304:PRO:CD	2.73	0.52
1:A:352:THR:HG22	1:A:354:GLY:H	1.75	0.52
1:B:411:ILE:H	1:B:411:ILE:CD1	2.23	0.52
1:B:122:PHE:HD1	1:B:376:ASP:OD2	1.93	0.52
1:A:75:PRO:O	1:A:167:TYR:OH	2.27	0.52
1:A:106:LEU:CD1	1:A:107:PHE:HD1	1.91	0.52
1:B:371:GLY:O	1:B:372:LEU:HD23	2.09	0.52
1:B:343:LEU:C	1:B:343:LEU:CD1	2.76	0.52
1:B:113:ILE:HD11	1:B:385:MET:HE1	1.91	0.52
1:B:205:ALA:O	1:B:209:VAL:HG23	2.10	0.52
1:C:107:PHE:O	1:C:109:PRO:CD	2.55	0.52
1:C:213:ILE:HD12	1:C:214:ALA:H	1.61	0.52
1:B:178:LYS:HE2	1:B:182:THR:HG21	1.91	0.52
1:A:298:ILE:N	1:A:298:ILE:CD1	2.72	0.52
1:C:333:LEU:C	1:C:337:GLN:HE21	2.12	0.51

Continued on next page...

Continued from previous page...

Atom-1	Atom-2	Distance(Å)	Clash(Å)
1:A:239:LEU:O	1:A:242:GLN:HB3	2.09	0.51
1:A:376:ASP:OD1	1:A:377:PRO:HD2	2.10	0.51
1:B:8:ILE:HG13	1:B:15:LYS:HE3	1.91	0.51
1:C:88:TYR:CZ	1:C:92:THR:HG21	2.45	0.51
1:C:23:GLY:HA3	1:C:213:ILE:CD1	2.30	0.51
1:A:152:LEU:HB2	1:A:153:PRO:CD	2.40	0.51
1:C:159:ILE:CD1	1:C:159:ILE:N	2.73	0.51
1:A:287:ARG:O	1:A:291:GLU:HG3	2.10	0.51
1:C:28:LEU:O	1:C:29:ILE:C	2.47	0.51
1:A:411:ILE:H	1:A:411:ILE:CD1	2.23	0.51
1:A:303:LEU:CD1	1:A:406:LEU:HD23	2.38	0.51
1:B:11:PRO:O	1:B:12:VAL:C	2.48	0.51
1:C:130:LEU:C	1:C:133:ILE:HG22	2.28	0.51
1:A:183:LEU:HD23	1:A:183:LEU:O	2.10	0.51
1:A:347:LEU:H	1:A:347:LEU:CD1	2.23	0.51
1:B:286:MET:HA	1:B:289:ALA:HB2	1.91	0.51
1:A:196:LYS:HD2	1:B:168:LEU:CD2	2.41	0.51
1:C:117:VAL:CG1	1:C:378:ASN:OD1	2.57	0.51
1:C:329:LEU:CD1	1:C:329:LEU:N	2.74	0.51
1:C:272:ALA:HB2	1:C:281:THR:HG21	1.91	0.51
1:B:103:MET:HE2	1:B:237:VAL:CG2	2.18	0.51
1:B:347:LEU:H	1:B:347:LEU:CD1	2.24	0.51
1:C:97:VAL:O	1:C:101:ILE:HD12	2.06	0.51
1:B:64:ALA:HB3	1:B:191:ALA:HB2	1.92	0.51
1:C:64:ALA:HB3	1:C:191:ALA:HB2	1.91	0.51
1:C:352:THR:HG22	1:C:354:GLY:H	1.75	0.51
1:A:355:VAL:H	1:A:358:ALA:HB2	1.75	0.51
1:C:205:ALA:O	1:C:209:VAL:HG23	2.11	0.51
1:A:272:ALA:HB2	1:A:402:VAL:HG21	1.93	0.51
1:A:231:VAL:CG2	1:A:324:PHE:CE1	2.93	0.51
1:C:152:LEU:HB2	1:C:153:PRO:CD	2.41	0.51
1:C:347:LEU:H	1:C:347:LEU:CD1	2.23	0.51
1:A:117:VAL:CG1	1:A:378:ASN:OD1	2.58	0.51
1:B:75:PRO:O	1:B:167:TYR:OH	2.28	0.51
1:A:97:VAL:O	1:A:101:ILE:HD12	2.06	0.51
1:C:366:VAL:O	1:C:369:SER:O	2.29	0.51
1:A:78:LEU:N	1:A:78:LEU:CD2	2.73	0.51
1:B:409:THR:O	1:B:412:VAL:HG12	2.11	0.51
1:B:28:LEU:O	1:B:29:ILE:C	2.47	0.51
1:C:411:ILE:H	1:C:411:ILE:CD1	2.24	0.51
1:C:298:ILE:N	1:C:298:ILE:CD1	2.73	0.51
1:A:157:PHE:CD1	1:C:56:MET:CE	2.82	0.51

Continued on next page...

Continued from previous page...

Atom-1	Atom-2	Distance(Å)	Clash(Å)
1:B:219:GLU:O	1:B:220:GLN:CB	2.59	0.51
1:C:72:SER:O	1:C:73:ILE:HG13	2.11	0.51
1:A:103:MET:HE1	1:A:237:VAL:CG2	2.32	0.51
1:A:329:LEU:CD1	1:A:329:LEU:N	2.74	0.51
1:B:161:LEU:O	1:B:165:ILE:HG13	2.11	0.51
1:A:110:GLY:O	1:A:111:ALA:C	2.49	0.50
1:B:107:PHE:CB	1:B:230:LYS:HE2	2.30	0.50
1:C:106:LEU:CD1	1:C:107:PHE:HD1	1.92	0.50
1:C:352:THR:HG23	1:C:358:ALA:CB	2.26	0.50
1:C:78:LEU:O	1:C:79:GLY:O	2.29	0.50
1:B:30:LEU:N	1:B:30:LEU:CD1	2.73	0.50
1:A:205:ALA:N	1:A:206:PRO:CD	2.74	0.50
1:C:121:GLN:CG	1:C:122:PHE:N	2.75	0.50
1:C:219:GLU:O	1:C:220:GLN:CB	2.59	0.50
1:B:323:PHE:HZ	1:B:338:GLN:HG3	1.77	0.50
1:B:28:LEU:CD2	1:B:28:LEU:H	2.24	0.50
1:A:28:LEU:O	1:A:29:ILE:C	2.47	0.50
1:A:362:MET:HE3	1:A:365:MET:SD	2.52	0.50
1:B:231:VAL:HG21	1:B:324:PHE:CD1	2.46	0.50
1:A:303:LEU:HD21	1:A:409:THR:HG21	1.93	0.50
1:C:113:ILE:CG2	1:C:328:ALA:HA	2.42	0.50
1:B:290:LYS:C	1:B:292:MET:N	2.60	0.50
1:A:67:VAL:HG11	1:A:187:ILE:CD1	2.41	0.50
1:C:198:VAL:O	1:C:202:MET:HG2	2.12	0.50
1:A:107:PHE:O	1:A:109:PRO:CD	2.57	0.50
1:C:11:PRO:O	1:C:12:VAL:C	2.48	0.50
1:A:329:LEU:HD21	1:A:379:VAL:HG22	1.94	0.50
1:A:231:VAL:HG21	1:A:324:PHE:CD1	2.46	0.50
1:B:115:LEU:CD2	1:B:115:LEU:N	2.74	0.50
1:C:323:PHE:HZ	1:C:338:GLN:HG3	1.76	0.50
1:A:285:THR:HG23	1:A:406:LEU:HD21	1.93	0.50
1:A:300:SER:O	1:A:304:PRO:HG3	2.11	0.50
1:C:251:LEU:CD2	1:C:411:ILE:HD11	2.41	0.50
1:B:376:ASP:OD1	1:B:377:PRO:HD2	2.11	0.50
1:B:152:LEU:HB2	1:B:153:PRO:CD	2.42	0.50
1:B:159:ILE:CD1	1:B:159:ILE:N	2.75	0.50
1:B:231:VAL:CG2	1:B:324:PHE:CE1	2.93	0.50
1:C:409:THR:O	1:C:412:VAL:HG12	2.12	0.50
1:B:303:LEU:HD21	1:B:409:THR:HG21	1.94	0.50
1:C:272:ALA:HB2	1:C:402:VAL:HG21	1.93	0.50
1:A:342:VAL:HG13	1:A:343:LEU:H	1.76	0.50
1:B:106:LEU:HD13	1:B:107:PHE:CD1	2.29	0.50

Continued on next page...

Continued from previous page...

Atom-1	Atom-2	Distance(Å)	Clash(Å)
1:C:231:VAL:HG21	1:C:324:PHE:CD1	2.46	0.50
1:C:303:LEU:CD1	1:C:406:LEU:HD23	2.40	0.50
1:A:80:ARG:HA	1:A:83:VAL:HG23	1.93	0.50
1:A:411:ILE:H	1:A:411:ILE:HD12	1.73	0.50
1:C:103:MET:HE2	1:C:237:VAL:CG2	2.13	0.50
1:A:366:VAL:O	1:A:369:SER:O	2.30	0.50
1:C:78:LEU:CD2	1:C:78:LEU:N	2.74	0.50
1:A:309:ILE:HG22	1:A:310:ASN:H	1.75	0.50
1:A:28:LEU:CD2	1:A:28:LEU:H	2.25	0.50
1:A:251:LEU:CD2	1:A:411:ILE:HD11	2.42	0.50
1:A:10:TYR:CB	1:A:11:PRO:HD2	2.20	0.50
1:B:174:GLU:OE2	1:B:174:GLU:HA	2.11	0.49
1:C:80:ARG:HA	1:C:83:VAL:HG23	1.93	0.49
1:A:174:GLU:OE2	1:A:174:GLU:HA	2.12	0.49
1:A:324:PHE:CD2	1:A:386:ILE:HD11	2.47	0.49
1:B:339:LEU:C	1:B:342:VAL:HG12	2.29	0.49
1:C:36:ALA:HB1	1:C:218:ALA:HB3	1.91	0.49
1:A:88:TYR:CZ	1:A:92:THR:HG21	2.47	0.49
1:B:23:GLY:CA	1:B:213:ILE:HD11	2.32	0.49
1:B:247:TYR:OH	1:B:312:ASP:OD1	2.23	0.49
1:B:121:GLN:CG	1:B:122:PHE:N	2.75	0.49
1:A:14:GLN:O	1:A:18:ILE:HG12	2.12	0.49
1:A:115:LEU:HD23	1:A:328:ALA:O	2.12	0.49
1:C:303:LEU:HD21	1:C:409:THR:HG21	1.93	0.49
1:B:285:THR:CG2	1:B:406:LEU:HD21	2.42	0.49
1:C:364:CYS:O	1:C:368:HIS:CD2	2.65	0.49
1:C:14:GLN:O	1:C:18:ILE:HG12	2.13	0.49
1:A:231:VAL:CG2	1:A:324:PHE:CD1	2.96	0.49
1:B:299:TYR:C	1:B:303:LEU:HD23	2.33	0.49
1:B:90:LEU:CD1	1:B:90:LEU:H	2.25	0.49
1:A:8:ILE:HG23	1:A:8:ILE:O	2.13	0.49
1:A:323:PHE:HZ	1:A:338:GLN:HG3	1.76	0.49
1:B:110:GLY:O	1:B:111:ALA:C	2.51	0.49
1:C:110:GLY:O	1:C:111:ALA:C	2.49	0.49
1:B:303:LEU:CD1	1:B:406:LEU:HD23	2.39	0.49
1:C:28:LEU:H	1:C:28:LEU:CD2	2.25	0.49
1:A:121:GLN:CG	1:A:122:PHE:N	2.75	0.49
1:B:329:LEU:N	1:B:329:LEU:CD1	2.75	0.49
1:B:272:ALA:HB2	1:B:402:VAL:HG21	1.93	0.49
1:B:366:VAL:O	1:B:369:SER:O	2.30	0.49
1:C:115:LEU:CD2	1:C:115:LEU:N	2.76	0.49
1:B:300:SER:O	1:B:304:PRO:HG3	2.12	0.49

Continued on next page...

Continued from previous page...

Atom-1	Atom-2	Distance(Å)	Clash(Å)
1:B:88:TYR:CZ	1:B:92:THR:HG21	2.47	0.49
1:B:407:THR:O	1:B:407:THR:HG22	2.12	0.49
1:B:117:VAL:CG1	1:B:378:ASN:OD1	2.61	0.49
1:B:198:VAL:O	1:B:202:MET:HG2	2.12	0.49
1:B:231:VAL:CG2	1:B:324:PHE:CD1	2.96	0.49
1:C:339:LEU:C	1:C:342:VAL:HG12	2.31	0.49
1:C:362:MET:HE3	1:C:365:MET:SD	2.52	0.49
1:A:398:THR:OG1	2:A:500:ASP:HA	2.13	0.49
1:B:28:LEU:O	1:B:31:GLY:CA	2.61	0.49
1:C:174:GLU:OE2	1:C:174:GLU:HA	2.12	0.49
1:B:362:MET:HE3	1:B:365:MET:SD	2.53	0.49
1:C:137:ILE:O	1:C:153:PRO:HA	2.13	0.49
1:C:231:VAL:CG2	1:C:324:PHE:CD1	2.95	0.49
1:A:299:TYR:C	1:A:303:LEU:HD23	2.33	0.49
1:A:23:GLY:HA3	1:A:213:ILE:CD1	2.30	0.49
1:A:198:VAL:O	1:A:202:MET:HG2	2.12	0.49
1:A:219:GLU:O	1:A:220:GLN:CB	2.59	0.49
1:A:113:ILE:CG2	1:A:328:ALA:HA	2.43	0.49
1:B:155:ILE:HG21	1:B:347:LEU:HD23	1.95	0.49
1:B:12:VAL:HG23	1:B:13:LEU:N	2.28	0.49
1:A:161:LEU:O	1:A:165:ILE:HG13	2.13	0.49
1:C:285:THR:CG2	1:C:406:LEU:HD21	2.42	0.49
1:C:78:LEU:C	1:C:79:GLY:O	2.48	0.49
1:B:251:LEU:CD2	1:B:411:ILE:HD11	2.43	0.49
1:B:115:LEU:HD23	1:B:328:ALA:O	2.13	0.48
1:A:364:CYS:O	1:A:368:HIS:CD2	2.66	0.48
1:A:137:ILE:O	1:A:153:PRO:HA	2.13	0.48
1:B:113:ILE:CG2	1:B:328:ALA:HA	2.42	0.48
1:C:205:ALA:N	1:C:206:PRO:CD	2.74	0.48
1:A:90:LEU:CD1	1:A:90:LEU:H	2.27	0.48
1:B:411:ILE:H	1:B:411:ILE:HD12	1.73	0.48
1:B:185:ASP:OD1	1:C:178:LYS:HE2	2.12	0.48
1:B:324:PHE:CD2	1:B:386:ILE:HD11	2.48	0.48
1:C:101:ILE:N	1:C:101:ILE:CD1	2.65	0.48
1:C:145:ALA:O	1:C:149:GLY:O	2.31	0.48
1:B:39:VAL:HG13	1:B:43:VAL:CB	2.43	0.48
1:A:30:LEU:N	1:A:30:LEU:CD1	2.74	0.48
1:C:407:THR:O	1:C:407:THR:HG22	2.13	0.48
1:C:155:ILE:HG21	1:C:347:LEU:HD23	1.94	0.48
1:C:300:SER:O	1:C:304:PRO:HG3	2.13	0.48
1:C:90:LEU:CD1	1:C:90:LEU:H	2.26	0.48
1:A:44:LYS:N	1:A:45:PRO:CD	2.76	0.48

Continued on next page...

Continued from previous page...

Atom-1	Atom-2	Distance(Å)	Clash(Å)
1:B:80:ARG:HA	1:B:83:VAL:HG23	1.94	0.48
1:B:23:GLY:HA3	1:B:213:ILE:CD1	2.30	0.48
1:A:205:ALA:O	1:A:209:VAL:HG23	2.12	0.48
1:B:203:GLN:CA	1:B:203:GLN:HE21	2.14	0.48
1:B:326:ALA:HB2	1:B:333:LEU:HD11	1.86	0.48
1:B:342:VAL:HG13	1:B:343:LEU:H	1.77	0.48
1:C:28:LEU:HD22	1:C:217:MET:HB3	1.96	0.48
1:A:407:THR:HG22	1:A:407:THR:O	2.13	0.48
1:C:247:TYR:OH	1:C:312:ASP:OD1	2.22	0.48
1:C:12:VAL:HG23	1:C:13:LEU:N	2.28	0.48
1:B:364:CYS:O	1:B:368:HIS:CD2	2.67	0.48
1:C:374:LEU:HD12	1:C:374:LEU:H	1.72	0.48
1:A:155:ILE:HG21	1:A:347:LEU:HD23	1.96	0.48
1:B:205:ALA:N	1:B:206:PRO:CD	2.75	0.48
1:C:8:ILE:O	1:C:8:ILE:HG23	2.14	0.48
1:A:149:GLY:O	1:A:150:GLN:HB3	2.14	0.48
1:A:78:LEU:C	1:A:79:GLY:O	2.49	0.48
1:B:357:GLY:O	1:B:358:ALA:C	2.52	0.48
1:B:137:ILE:O	1:B:153:PRO:HA	2.13	0.47
1:C:106:LEU:HD12	1:C:107:PHE:CG	2.46	0.47
1:C:155:ILE:HG13	1:C:365:MET:CE	2.44	0.47
1:C:342:VAL:HG13	1:C:343:LEU:H	1.78	0.47
1:C:350:ILE:O	1:C:350:ILE:HG22	2.13	0.47
1:C:285:THR:HG23	1:C:406:LEU:HD21	1.95	0.47
1:B:78:LEU:C	1:B:79:GLY:O	2.49	0.47
1:A:101:ILE:O	1:A:105:ARG:HG2	2.14	0.47
1:A:115:LEU:N	1:A:115:LEU:CD2	2.77	0.47
1:A:370:VAL:CG1	1:A:370:VAL:O	2.60	0.47
1:B:14:GLN:O	1:B:18:ILE:HG12	2.13	0.47
1:A:141:ASN:O	1:A:142:PRO:C	2.52	0.47
1:A:152:LEU:N	1:A:152:LEU:CD1	2.65	0.47
1:A:347:LEU:N	1:A:347:LEU:CD1	2.76	0.47
1:B:326:ALA:HB3	1:B:333:LEU:HD11	1.86	0.47
1:C:357:GLY:O	1:C:358:ALA:C	2.53	0.47
1:A:357:GLY:O	1:A:358:ALA:C	2.51	0.47
1:B:186:ALA:O	1:B:187:ILE:C	2.53	0.47
1:B:272:ALA:CB	1:B:402:VAL:HG21	2.44	0.47
1:A:272:ALA:CB	1:A:402:VAL:HG21	2.44	0.47
1:A:18:ILE:O	1:A:22:LEU:HB3	2.14	0.47
1:A:145:ALA:O	1:A:149:GLY:O	2.31	0.47
1:A:342:VAL:CG1	1:A:343:LEU:N	2.77	0.47
1:B:155:ILE:HG13	1:B:365:MET:CE	2.44	0.47

Continued on next page...

Continued from previous page...

Atom-1	Atom-2	Distance(Å)	Clash(Å)
1:C:299:TYR:C	1:C:303:LEU:HD23	2.33	0.47
1:B:57:LEU:O	1:B:60:PRO:HD2	2.14	0.47
1:C:18:ILE:O	1:C:22:LEU:HB3	2.14	0.47
1:B:299:TYR:HB2	1:B:303:LEU:HD21	1.88	0.47
1:B:309:ILE:CG2	1:B:310:ASN:N	2.77	0.47
1:A:248:PHE:CD2	1:A:258:PRO:HB3	2.48	0.47
1:C:272:ALA:CB	1:C:402:VAL:HG21	2.44	0.47
1:B:254:TYR:CE2	1:B:411:ILE:HG21	2.50	0.47
1:A:12:VAL:HG23	1:A:13:LEU:N	2.28	0.47
1:B:101:ILE:O	1:B:105:ARG:HG2	2.15	0.47
1:B:149:GLY:O	1:B:150:GLN:HB3	2.15	0.47
1:C:101:ILE:O	1:C:105:ARG:HG2	2.14	0.47
1:C:149:GLY:O	1:C:150:GLN:HB3	2.15	0.47
1:A:108:ASN:H	1:A:230:LYS:HZ1	1.63	0.47
1:B:150:GLN:CG	1:B:153:PRO:HG2	2.45	0.47
1:A:36:ALA:O	1:A:39:VAL:HB	2.15	0.47
1:A:78:LEU:O	1:A:79:GLY:O	2.32	0.47
1:B:285:THR:HG23	1:B:406:LEU:HD21	1.96	0.47
1:C:254:TYR:CE2	1:C:411:ILE:HG21	2.50	0.47
1:C:248:PHE:CD2	1:C:258:PRO:HB3	2.48	0.47
1:C:161:LEU:O	1:C:165:ILE:HG13	2.15	0.47
1:C:342:VAL:CG1	1:C:343:LEU:N	2.78	0.47
1:A:309:ILE:CG2	1:A:310:ASN:N	2.78	0.47
1:A:204:TYR:C	1:A:206:PRO:HD2	2.35	0.47
1:C:411:ILE:H	1:C:411:ILE:HD12	1.74	0.47
1:A:18:ILE:O	1:A:22:LEU:CB	2.63	0.47
1:C:398:THR:OG1	2:C:500:ASP:HA	2.15	0.47
1:C:376:ASP:OD1	1:C:377:PRO:HD2	2.14	0.47
1:C:9:GLU:OE1	1:C:9:GLU:HA	2.15	0.47
1:C:309:ILE:CG2	1:C:310:ASN:N	2.77	0.47
1:A:55:CYS:C	1:A:58:VAL:HG12	2.28	0.47
1:B:8:ILE:O	1:B:8:ILE:HG23	2.15	0.47
1:A:173:ASN:OD1	1:A:174:GLU:N	2.48	0.47
1:A:28:LEU:O	1:A:31:GLY:CA	2.62	0.46
1:C:241:LEU:CD2	1:C:241:LEU:C	2.83	0.46
1:A:186:ALA:O	1:A:187:ILE:C	2.53	0.46
1:B:145:ALA:O	1:B:149:GLY:O	2.32	0.46
1:C:28:LEU:O	1:C:31:GLY:CA	2.62	0.46
1:A:192:GLU:HG2	1:B:176:VAL:HG13	1.96	0.46
1:A:39:VAL:HG13	1:A:43:VAL:CB	2.45	0.46
1:A:241:LEU:CD2	1:A:241:LEU:C	2.84	0.46
1:C:23:GLY:CA	1:C:213:ILE:HD11	2.32	0.46

Continued on next page...

Continued from previous page...

Atom-1	Atom-2	Distance(Å)	Clash(Å)
1:C:160:ILE:CD1	1:C:160:ILE:H	2.29	0.46
1:B:257:ASP:O	1:B:261:PHE:HB2	2.16	0.46
1:C:12:VAL:CA	1:C:15:LYS:HB3	2.45	0.46
1:A:326:ALA:HB3	1:A:333:LEU:HD11	1.88	0.46
1:C:324:PHE:CD2	1:C:386:ILE:HD11	2.49	0.46
1:C:115:LEU:HD23	1:C:328:ALA:O	2.14	0.46
1:C:36:ALA:O	1:C:39:VAL:HB	2.16	0.46
1:B:241:LEU:HD23	1:B:245:LEU:HB3	1.97	0.46
1:B:204:TYR:C	1:B:206:PRO:HD2	2.36	0.46
1:C:204:TYR:C	1:C:206:PRO:HD2	2.35	0.46
1:C:257:ASP:O	1:C:261:PHE:HB2	2.15	0.46
1:C:141:ASN:O	1:C:142:PRO:C	2.54	0.46
1:C:334:THR:O	1:C:335:VAL:C	2.53	0.46
1:C:372:LEU:O	1:C:379:VAL:HG11	2.15	0.46
1:B:18:ILE:O	1:B:22:LEU:HB3	2.16	0.46
1:C:347:LEU:CD1	1:C:347:LEU:N	2.76	0.46
1:A:28:LEU:HD22	1:A:217:MET:HB3	1.97	0.46
1:C:241:LEU:HD23	1:C:245:LEU:HB3	1.98	0.46
1:B:130:LEU:HA	1:B:133:ILE:HG22	1.98	0.46
1:A:372:LEU:O	1:A:379:VAL:HG11	2.16	0.46
1:B:141:ASN:O	1:B:142:PRO:C	2.54	0.46
1:B:227:GLU:OE1	1:B:227:GLU:HA	2.16	0.46
1:C:355:VAL:HG12	1:C:356:PRO:HG2	1.98	0.46
1:A:168:LEU:HD11	1:C:193:ALA:CA	2.45	0.46
1:C:55:CYS:C	1:C:58:VAL:HG12	2.29	0.46
1:A:57:LEU:O	1:A:60:PRO:HD2	2.15	0.46
1:C:44:LYS:N	1:C:45:PRO:CD	2.77	0.46
1:C:73:ILE:HG23	1:C:86:VAL:HG11	1.98	0.46
1:A:241:LEU:HD23	1:A:245:LEU:HB3	1.98	0.46
1:A:187:ILE:O	1:A:190:LEU:HB3	2.16	0.46
1:A:107:PHE:C	1:A:108:ASN:HD22	2.19	0.46
1:B:173:ASN:OD1	1:B:174:GLU:N	2.48	0.46
1:A:311:MET:HE1	1:A:352:THR:CG2	2.46	0.46
1:B:248:PHE:CD2	1:B:258:PRO:HB3	2.48	0.46
1:A:159:ILE:CD1	1:A:159:ILE:N	2.74	0.46
1:B:334:THR:O	1:B:335:VAL:C	2.52	0.46
1:C:107:PHE:C	1:C:108:ASN:HD22	2.19	0.46
1:C:323:PHE:CE2	1:C:333:LEU:HD22	2.51	0.46
1:A:73:ILE:HG23	1:A:86:VAL:HG11	1.98	0.46
1:B:28:LEU:HD22	1:B:217:MET:HB3	1.97	0.46
1:B:9:GLU:HA	1:B:9:GLU:OE1	2.15	0.46
1:B:295:SER:HB3	1:B:298:ILE:CD1	2.34	0.46

Continued on next page...

Continued from previous page...

Atom-1	Atom-2	Distance(Å)	Clash(Å)
1:A:106:LEU:HD12	1:A:107:PHE:CG	2.46	0.45
1:A:227:GLU:HA	1:A:227:GLU:OE1	2.16	0.45
1:B:342:VAL:CG1	1:B:343:LEU:N	2.79	0.45
1:B:347:LEU:N	1:B:347:LEU:CD1	2.78	0.45
1:C:186:ALA:O	1:C:188:ASN:O	2.35	0.45
1:A:130:LEU:HA	1:A:133:ILE:HG22	1.98	0.45
1:C:224:VAL:O	1:C:228:LEU:HG	2.16	0.45
1:B:323:PHE:CE2	1:B:333:LEU:HD22	2.51	0.45
1:B:336:GLY:O	1:B:340:THR:OG1	2.31	0.45
1:C:151:VAL:HG12	1:C:152:LEU:N	2.31	0.45
1:C:339:LEU:HD12	1:C:340:THR:N	2.31	0.45
1:C:39:VAL:HG13	1:C:43:VAL:CB	2.46	0.45
1:B:317:TYR:CZ	1:B:397:ARG:NH2	2.84	0.45
1:B:189:GLY:O	1:B:193:ALA:N	2.46	0.45
1:C:18:ILE:O	1:C:22:LEU:CB	2.64	0.45
1:A:269:MET:HB3	1:A:399:MET:HE3	1.99	0.45
1:A:275:THR:O	1:A:276:ARG:HB2	2.16	0.45
1:B:370:VAL:O	1:B:370:VAL:CG1	2.63	0.45
1:B:78:LEU:O	1:B:79:GLY:O	2.33	0.45
1:A:224:VAL:O	1:A:228:LEU:HG	2.16	0.45
1:C:275:THR:O	1:C:276:ARG:HB2	2.16	0.45
1:B:36:ALA:HB1	1:B:218:ALA:HB3	1.92	0.45
1:B:39:VAL:CG1	1:B:43:VAL:HB	2.45	0.45
1:B:44:LYS:N	1:B:45:PRO:CD	2.76	0.45
1:A:397:ARG:HD2	2:A:500:ASP:OD1	2.17	0.45
1:C:250:LEU:CA	1:C:253:ILE:CG2	2.83	0.45
1:C:247:TYR:HD1	1:C:407:THR:CB	2.29	0.45
1:C:186:ALA:O	1:C:187:ILE:C	2.54	0.45
1:B:192:GLU:OE2	1:B:192:GLU:HA	2.16	0.45
1:B:107:PHE:C	1:B:108:ASN:HD22	2.19	0.45
1:B:350:ILE:O	1:B:350:ILE:HG22	2.16	0.45
1:A:168:LEU:HD21	1:C:196:LYS:CG	2.46	0.45
1:C:183:LEU:HD21	1:C:187:ILE:HD11	1.98	0.45
1:C:122:PHE:CD1	1:C:376:ASP:OD2	2.70	0.45
1:A:350:ILE:HG22	1:A:350:ILE:O	2.17	0.45
1:C:311:MET:HE1	1:C:352:THR:CG2	2.46	0.45
1:A:236:TYR:O	1:A:238:GLY:N	2.50	0.45
1:A:96:ALA:HB2	1:A:312:ASP:HB2	1.99	0.45
1:B:187:ILE:O	1:B:190:LEU:HB3	2.17	0.45
1:A:9:GLU:OE1	1:A:9:GLU:HA	2.16	0.45
1:A:61:ILE:O	1:A:65:SER:HB2	2.16	0.45
1:C:173:ASN:OD1	1:C:174:GLU:N	2.49	0.45

Continued on next page...

Continued from previous page...

Atom-1	Atom-2	Distance(Å)	Clash(Å)
1:A:141:ASN:ND2	1:C:149:GLY:H	2.15	0.45
1:B:106:LEU:HD12	1:B:107:PHE:CG	2.45	0.45
1:C:150:GLN:CG	1:C:153:PRO:HG2	2.45	0.45
1:C:227:GLU:OE1	1:C:227:GLU:HA	2.16	0.45
1:C:97:VAL:HG21	1:C:342:VAL:HA	1.99	0.45
1:C:370:VAL:O	1:C:370:VAL:CG1	2.62	0.45
1:B:61:ILE:HD11	1:B:361:ILE:HG22	1.99	0.45
1:A:339:LEU:HD12	1:A:340:THR:N	2.32	0.45
1:B:97:VAL:HG21	1:B:342:VAL:HA	1.99	0.45
1:C:152:LEU:N	1:C:155:ILE:HD13	2.32	0.45
1:B:36:ALA:O	1:B:39:VAL:HB	2.17	0.45
1:B:311:MET:HE1	1:B:352:THR:CG2	2.47	0.45
1:B:275:THR:O	1:B:276:ARG:HB2	2.16	0.45
1:A:122:PHE:CD1	1:A:376:ASP:OD2	2.70	0.45
1:C:189:GLY:O	1:C:193:ALA:N	2.46	0.45
1:C:75:PRO:HA	1:C:76:ALA:HA	1.49	0.45
1:A:39:VAL:CG1	1:A:43:VAL:HB	2.48	0.44
1:B:73:ILE:HG23	1:B:86:VAL:HG11	1.98	0.44
1:A:254:TYR:CE2	1:A:411:ILE:HG21	2.53	0.44
1:A:189:GLY:O	1:A:193:ALA:N	2.46	0.44
1:B:183:LEU:HD21	1:B:187:ILE:HD11	1.99	0.44
1:C:187:ILE:O	1:C:190:LEU:HB3	2.16	0.44
1:B:18:ILE:O	1:B:22:LEU:CB	2.65	0.44
1:C:289:ALA:O	1:C:294:ILE:HD12	2.17	0.44
1:C:78:LEU:O	1:C:79:GLY:C	2.56	0.44
1:A:36:ALA:HB1	1:A:218:ALA:HB3	1.92	0.44
1:A:73:ILE:CG2	1:A:73:ILE:O	2.65	0.44
1:B:28:LEU:CD2	1:B:28:LEU:N	2.80	0.44
1:B:236:TYR:O	1:B:238:GLY:N	2.50	0.44
1:A:203:GLN:CA	1:A:203:GLN:HE21	2.13	0.44
1:A:333:LEU:HA	1:A:337:GLN:HE22	1.74	0.44
1:C:141:ASN:O	1:C:144:GLY:N	2.51	0.44
1:C:192:GLU:OE2	1:C:192:GLU:HA	2.16	0.44
1:C:28:LEU:HD12	1:C:222:VAL:HG22	1.99	0.44
1:C:252:LYS:C	1:C:252:LYS:CD	2.83	0.44
1:C:251:LEU:HD23	1:C:411:ILE:HD11	1.99	0.44
1:A:257:ASP:O	1:A:261:PHE:HB2	2.17	0.44
1:A:193:ALA:CB	1:B:168:LEU:HD11	2.48	0.44
1:C:57:LEU:O	1:C:60:PRO:HD2	2.18	0.44
1:B:372:LEU:O	1:B:379:VAL:HG11	2.17	0.44
1:C:295:SER:HB3	1:C:298:ILE:CD1	2.33	0.44
1:A:281:THR:O	1:A:281:THR:CG2	2.56	0.44

Continued on next page...

Continued from previous page...

Atom-1	Atom-2	Distance(Å)	Clash(Å)
1:B:28:LEU:HD12	1:B:222:VAL:HG22	1.99	0.44
1:A:23:GLY:CA	1:A:213:ILE:HD11	2.32	0.44
1:C:236:TYR:O	1:C:238:GLY:N	2.51	0.44
1:B:339:LEU:HD12	1:B:340:THR:N	2.31	0.44
1:B:398:THR:OG1	2:B:500:ASP:HA	2.16	0.44
1:A:28:LEU:N	1:A:28:LEU:CD2	2.81	0.44
1:A:251:LEU:HD23	1:A:411:ILE:HD11	2.00	0.44
1:A:10:TYR:CB	1:A:11:PRO:CD	2.86	0.44
1:B:186:ALA:O	1:B:188:ASN:O	2.35	0.44
1:A:335:VAL:CG1	1:A:335:VAL:O	2.66	0.44
1:C:342:VAL:O	1:C:346:VAL:HG23	2.17	0.44
1:C:362:MET:CE	1:C:365:MET:SD	3.06	0.44
1:A:192:GLU:HA	1:A:192:GLU:OE2	2.17	0.44
1:C:352:THR:HG22	1:C:358:ALA:HB1	1.89	0.44
1:B:397:ARG:HD2	2:B:500:ASP:OD1	2.17	0.44
1:B:235:VAL:O	1:B:238:GLY:N	2.47	0.44
1:B:40:HIS:HD2	1:B:215:TYR:CZ	2.36	0.44
1:C:40:HIS:HD2	1:C:215:TYR:CZ	2.35	0.44
1:A:334:THR:O	1:A:335:VAL:C	2.53	0.44
1:A:155:ILE:CG1	1:A:365:MET:CE	2.96	0.44
1:A:97:VAL:HG21	1:A:342:VAL:HA	1.99	0.44
1:B:311:MET:SD	1:B:352:THR:HB	2.58	0.44
1:A:317:TYR:CZ	1:A:397:ARG:NH2	2.86	0.44
1:B:73:ILE:CG2	1:B:73:ILE:O	2.65	0.44
1:B:241:LEU:C	1:B:241:LEU:CD2	2.83	0.44
1:B:213:ILE:HD12	1:B:214:ALA:CA	2.44	0.44
1:A:182:THR:O	1:A:185:ASP:N	2.51	0.44
1:A:220:GLN:OE1	1:A:220:GLN:HA	2.18	0.44
1:C:269:MET:HB3	1:C:399:MET:HE3	2.00	0.44
1:B:342:VAL:O	1:B:346:VAL:HG23	2.17	0.44
1:C:285:THR:HG22	1:C:303:LEU:HD12	2.00	0.44
1:B:12:VAL:CA	1:B:15:LYS:HB3	2.45	0.44
1:A:40:HIS:HD2	1:A:215:TYR:CZ	2.36	0.44
1:A:113:ILE:HD11	1:A:385:MET:HE1	1.99	0.43
1:A:141:ASN:O	1:A:144:GLY:N	2.51	0.43
1:B:252:LYS:C	1:B:252:LYS:CD	2.82	0.43
1:A:235:VAL:O	1:A:238:GLY:N	2.48	0.43
1:B:96:ALA:HB2	1:B:312:ASP:HB2	2.00	0.43
1:C:220:GLN:CB	1:C:224:VAL:CG1	2.95	0.43
1:A:150:GLN:CG	1:A:153:PRO:HG2	2.48	0.43
1:A:323:PHE:CE2	1:A:333:LEU:HD22	2.53	0.43
1:B:104:ALA:HB1	1:B:323:PHE:HB2	2.00	0.43

Continued on next page...

Continued from previous page...

Atom-1	Atom-2	Distance(Å)	Clash(Å)
1:B:247:TYR:HD1	1:B:407:THR:CB	2.31	0.43
1:A:186:ALA:O	1:A:188:ASN:O	2.37	0.43
1:C:57:LEU:HD23	1:C:194:MET:CE	2.48	0.43
1:B:61:ILE:HD11	1:B:361:ILE:CG2	2.48	0.43
1:A:75:PRO:HA	1:A:76:ALA:HA	1.50	0.43
1:A:113:ILE:HD11	1:A:385:MET:SD	2.58	0.43
1:C:335:VAL:CG1	1:C:335:VAL:O	2.66	0.43
1:C:113:ILE:HD11	1:C:385:MET:SD	2.58	0.43
1:C:10:TYR:CB	1:C:11:PRO:CD	2.87	0.43
1:A:157:PHE:CD1	1:C:56:MET:HE2	2.44	0.43
1:A:152:LEU:N	1:A:155:ILE:HD13	2.32	0.43
1:B:155:ILE:CG1	1:B:365:MET:CE	2.96	0.43
1:C:191:ALA:C	1:C:195:TYR:CE2	2.91	0.43
1:B:182:THR:O	1:B:185:ASP:N	2.51	0.43
1:C:130:LEU:HA	1:C:133:ILE:HG22	1.99	0.43
1:C:61:ILE:HD11	1:C:361:ILE:HG22	2.00	0.43
1:B:337:GLN:O	1:B:341:ILE:HG13	2.19	0.43
1:C:39:VAL:CG1	1:C:43:VAL:HB	2.48	0.43
1:A:28:LEU:HD12	1:A:222:VAL:HG22	2.00	0.43
1:B:254:TYR:HB3	1:B:414:LYS:HG2	2.00	0.43
1:A:129:PRO:O	1:A:130:LEU:C	2.57	0.43
1:A:295:SER:HB3	1:A:298:ILE:CD1	2.34	0.43
1:A:151:VAL:HG12	1:A:152:LEU:N	2.32	0.43
1:A:277:SER:O	1:A:278:SER:C	2.57	0.43
1:A:24:ALA:HA	1:A:217:MET:HG3	2.01	0.43
1:C:254:TYR:HB3	1:C:414:LYS:HG2	2.01	0.43
1:B:238:GLY:C	1:B:316:LEU:HD11	2.39	0.43
1:A:160:ILE:CD1	1:A:160:ILE:H	2.32	0.43
1:B:160:ILE:H	1:B:160:ILE:CD1	2.31	0.43
1:B:376:ASP:OD1	1:B:377:PRO:CD	2.67	0.43
1:B:220:GLN:CB	1:B:224:VAL:CG1	2.97	0.43
1:A:111:ALA:N	1:A:327:ASN:HB3	2.33	0.43
1:B:141:ASN:O	1:B:144:GLY:N	2.52	0.43
1:C:108:ASN:N	1:C:108:ASN:HD22	2.17	0.43
1:B:57:LEU:HD23	1:B:194:MET:CE	2.49	0.43
1:C:132:HIS:O	1:C:136:ASP:CG	2.56	0.43
1:C:250:LEU:O	1:C:253:ILE:HG22	2.18	0.43
1:A:376:ASP:OD1	1:A:377:PRO:CD	2.66	0.43
1:C:160:ILE:HD12	1:C:160:ILE:H	1.81	0.43
1:A:12:VAL:CA	1:A:15:LYS:HB3	2.44	0.43
1:C:376:ASP:C	1:C:376:ASP:OD1	2.56	0.43
1:C:61:ILE:HD11	1:C:361:ILE:CG2	2.48	0.43

Continued on next page...

Continued from previous page...

Atom-1	Atom-2	Distance(Å)	Clash(Å)
1:B:132:HIS:O	1:B:136:ASP:CG	2.57	0.43
1:A:151:VAL:C	1:A:155:ILE:HD13	2.40	0.43
1:B:108:ASN:N	1:B:108:ASN:HD22	2.17	0.43
1:B:151:VAL:HG12	1:B:152:LEU:N	2.33	0.43
1:C:73:ILE:O	1:C:73:ILE:CG2	2.66	0.43
1:A:285:THR:HG22	1:A:303:LEU:HD12	2.00	0.43
1:B:285:THR:HG22	1:B:303:LEU:HD12	2.01	0.43
1:B:254:TYR:CE2	1:B:411:ILE:CG2	3.02	0.43
1:A:168:LEU:HD21	1:C:196:LYS:HG2	1.99	0.43
1:C:182:THR:O	1:C:185:ASP:N	2.51	0.43
1:C:13:LEU:O	1:C:17:LEU:HG	2.18	0.43
1:C:203:GLN:HE21	1:C:203:GLN:CA	2.13	0.43
1:B:224:VAL:O	1:B:228:LEU:HG	2.18	0.43
1:A:104:ALA:HB1	1:A:323:PHE:HB2	2.00	0.43
1:C:155:ILE:CG1	1:C:365:MET:CE	2.97	0.43
1:B:251:LEU:HD23	1:B:411:ILE:HD11	2.01	0.43
1:B:376:ASP:OD1	1:B:376:ASP:C	2.57	0.43
1:C:268:ALA:HA	1:C:284:VAL:HG12	2.01	0.43
1:A:105:ARG:O	1:A:108:ASN:ND2	2.52	0.42
1:C:139:PRO:HG3	1:C:153:PRO:CA	2.49	0.42
1:A:213:ILE:HD12	1:A:214:ALA:CA	2.45	0.42
1:C:254:TYR:CE2	1:C:411:ILE:CG2	3.02	0.42
1:C:96:ALA:HB2	1:C:312:ASP:HB2	2.01	0.42
1:B:196:LYS:CG	1:C:168:LEU:CD2	2.90	0.42
1:C:129:PRO:O	1:C:130:LEU:C	2.57	0.42
1:B:220:GLN:OE1	1:B:220:GLN:HA	2.18	0.42
1:A:108:ASN:N	1:A:109:PRO:HD3	2.33	0.42
1:C:104:ALA:HB1	1:C:323:PHE:HB2	2.01	0.42
1:A:289:ALA:O	1:A:294:ILE:HD12	2.19	0.42
1:B:289:ALA:O	1:B:294:ILE:HD12	2.19	0.42
1:B:80:ARG:O	1:B:80:ARG:HG2	2.19	0.42
1:A:23:GLY:C	1:A:213:ILE:HD13	2.40	0.42
1:B:250:LEU:C	1:B:253:ILE:CG2	2.79	0.42
1:C:220:GLN:HA	1:C:220:GLN:OE1	2.18	0.42
1:A:132:HIS:O	1:A:136:ASP:CG	2.58	0.42
1:C:336:GLY:HA2	1:C:339:LEU:HG	2.01	0.42
1:C:80:ARG:HG2	1:C:80:ARG:O	2.19	0.42
1:C:85:ILE:HG12	1:C:302:THR:HG22	2.01	0.42
1:A:254:TYR:HB3	1:A:414:LYS:HG2	2.00	0.42
1:B:13:LEU:O	1:B:17:LEU:HG	2.19	0.42
1:C:61:ILE:O	1:C:65:SER:HB2	2.13	0.42
1:A:337:GLN:O	1:A:341:ILE:HG13	2.19	0.42

Continued on next page...

Continued from previous page...

Atom-1	Atom-2	Distance(Å)	Clash(Å)
1:C:152:LEU:CD1	1:C:152:LEU:N	2.66	0.42
1:C:339:LEU:C	1:C:339:LEU:CD1	2.88	0.42
1:A:191:ALA:C	1:A:195:TYR:CE2	2.93	0.42
1:C:393:LEU:O	1:C:397:ARG:HB2	2.19	0.42
1:A:85:ILE:HG12	1:A:302:THR:HG22	2.01	0.42
1:B:393:LEU:O	1:B:397:ARG:HB2	2.19	0.42
1:C:222:VAL:HG12	1:C:222:VAL:O	2.20	0.42
1:C:238:GLY:C	1:C:316:LEU:HD11	2.40	0.42
1:C:254:TYR:CD2	1:C:411:ILE:CG2	3.02	0.42
1:A:376:ASP:OD1	1:A:377:PRO:N	2.52	0.42
1:B:122:PHE:CD1	1:B:376:ASP:OD2	2.71	0.42
1:A:178:LYS:HE2	1:A:182:THR:CG2	2.49	0.42
1:A:144:GLY:O	1:A:145:ALA:C	2.58	0.42
1:A:139:PRO:HG3	1:A:153:PRO:CA	2.49	0.42
1:A:155:ILE:HG13	1:A:365:MET:CE	2.43	0.42
1:A:326:ALA:HB2	1:A:333:LEU:HD11	1.86	0.42
1:C:397:ARG:HD2	2:C:500:ASP:OD1	2.18	0.42
1:A:78:LEU:O	1:A:79:GLY:C	2.58	0.42
1:C:316:LEU:C	1:C:316:LEU:CD2	2.88	0.42
1:A:183:LEU:HD21	1:A:187:ILE:HD11	2.01	0.42
1:C:178:LYS:HE2	1:C:182:THR:CG2	2.50	0.42
1:B:333:LEU:HA	1:B:337:GLN:HE22	1.74	0.42
1:B:66:LEU:HD13	1:B:155:ILE:HG23	2.01	0.42
1:A:80:ARG:HG2	1:A:80:ARG:O	2.19	0.42
1:C:23:GLY:C	1:C:213:ILE:HD13	2.40	0.42
1:A:247:TYR:HD1	1:A:407:THR:CB	2.32	0.42
1:C:111:ALA:N	1:C:327:ASN:HB3	2.35	0.42
1:C:317:TYR:CZ	1:C:397:ARG:NH2	2.86	0.42
1:A:352:THR:HG22	1:A:358:ALA:HB1	1.89	0.42
1:A:61:ILE:HD11	1:A:361:ILE:CG2	2.50	0.42
1:C:337:GLN:O	1:C:341:ILE:HG13	2.20	0.42
1:C:299:TYR:HB2	1:C:303:LEU:HD21	1.88	0.42
1:A:72:SER:C	1:A:73:ILE:CG1	2.88	0.42
1:A:13:LEU:O	1:A:17:LEU:HG	2.19	0.42
1:B:362:MET:CE	1:B:365:MET:SD	3.08	0.42
1:B:113:ILE:HD11	1:B:385:MET:SD	2.60	0.42
1:C:144:GLY:O	1:C:145:ALA:C	2.58	0.42
1:C:151:VAL:C	1:C:155:ILE:HD13	2.40	0.42
1:B:316:LEU:C	1:B:316:LEU:CD2	2.88	0.42
1:B:269:MET:HB3	1:B:399:MET:HE3	2.00	0.42
1:B:268:ALA:HA	1:B:284:VAL:HG12	2.01	0.42
1:A:355:VAL:HG12	1:A:356:PRO:HG2	1.99	0.42

Continued on next page...

Continued from previous page...

Atom-1	Atom-2	Distance(Å)	Clash(Å)
1:B:78:LEU:O	1:B:79:GLY:C	2.58	0.42
1:B:254:TYR:CD2	1:B:411:ILE:CG2	3.02	0.42
1:B:262:ILE:HG23	1:B:269:MET:CE	2.50	0.42
1:C:262:ILE:HG23	1:C:269:MET:CE	2.50	0.42
1:A:362:MET:CE	1:A:365:MET:SD	3.08	0.41
1:B:191:ALA:C	1:B:195:TYR:CE2	2.93	0.41
1:C:397:ARG:HB3	1:C:398:THR:H	1.64	0.41
1:A:77:ARG:H	1:A:78:LEU:HD23	1.85	0.41
1:B:277:SER:O	1:B:278:SER:C	2.59	0.41
1:B:222:VAL:HG12	1:B:222:VAL:O	2.20	0.41
1:C:257:ASP:HA	1:C:258:PRO:HD2	1.90	0.41
1:A:339:LEU:C	1:A:339:LEU:CD1	2.89	0.41
1:B:77:ARG:H	1:B:78:LEU:HD23	1.85	0.41
1:B:82:GLY:O	1:B:85:ILE:CG2	2.68	0.41
1:B:23:GLY:C	1:B:213:ILE:HD13	2.40	0.41
1:B:24:ALA:HA	1:B:217:MET:HG3	2.01	0.41
1:A:222:VAL:HG12	1:A:222:VAL:O	2.20	0.41
1:B:376:ASP:OD1	1:B:377:PRO:N	2.53	0.41
1:C:269:MET:HB2	1:C:269:MET:HE3	1.97	0.41
1:A:139:PRO:HG3	1:A:153:PRO:HB3	2.02	0.41
1:B:139:PRO:HG3	1:B:153:PRO:CA	2.50	0.41
1:C:105:ARG:O	1:C:108:ASN:ND2	2.53	0.41
1:C:322:THR:CG2	1:C:341:ILE:HD13	2.50	0.41
1:B:36:ALA:O	1:B:37:HIS:C	2.58	0.41
1:B:85:ILE:HG12	1:B:302:THR:HG22	2.01	0.41
1:A:252:LYS:CD	1:A:252:LYS:C	2.83	0.41
1:A:238:GLY:C	1:A:316:LEU:HD11	2.40	0.41
1:A:57:LEU:HD23	1:A:194:MET:CE	2.47	0.41
1:B:324:PHE:HB3	1:B:386:ILE:HD11	2.02	0.41
1:C:192:GLU:HA	1:C:195:TYR:CD2	2.56	0.41
1:C:77:ARG:H	1:C:78:LEU:HD23	1.85	0.41
1:A:393:LEU:O	1:A:397:ARG:HB2	2.20	0.41
1:A:194:MET:O	1:A:198:VAL:HG23	2.21	0.41
1:B:103:MET:HE3	1:B:107:PHE:CE1	2.56	0.41
1:B:72:SER:C	1:B:73:ILE:CG1	2.88	0.41
1:A:376:ASP:C	1:A:376:ASP:OD1	2.57	0.41
1:C:376:ASP:OD1	1:C:377:PRO:N	2.53	0.41
1:A:268:ALA:HA	1:A:284:VAL:HG12	2.01	0.41
1:A:336:GLY:O	1:A:340:THR:OG1	2.32	0.41
1:A:337:GLN:O	1:A:340:THR:HB	2.20	0.41
1:A:342:VAL:O	1:A:346:VAL:HG23	2.19	0.41
1:C:309:ILE:CG2	1:C:310:ASN:H	2.33	0.41

Continued on next page...

Continued from previous page...

Atom-1	Atom-2	Distance(Å)	Clash(Å)
1:B:355:VAL:HG12	1:B:356:PRO:HG2	1.99	0.41
1:A:254:TYR:CE2	1:A:411:ILE:CG2	3.04	0.41
1:A:62:VAL:HG12	1:A:62:VAL:O	2.20	0.41
1:A:342:VAL:CG1	1:A:343:LEU:H	2.34	0.41
1:C:106:LEU:C	1:C:106:LEU:CD1	2.88	0.41
1:C:277:SER:O	1:C:278:SER:C	2.57	0.41
1:A:39:VAL:C	1:A:41:THR:H	2.24	0.41
1:C:24:ALA:HA	1:C:217:MET:HG3	2.01	0.41
1:B:129:PRO:O	1:B:130:LEU:C	2.59	0.41
1:A:220:GLN:CB	1:A:224:VAL:CG1	2.97	0.41
1:B:105:ARG:O	1:B:108:ASN:ND2	2.53	0.41
1:B:111:ALA:N	1:B:327:ASN:HB3	2.35	0.41
1:B:152:LEU:N	1:B:155:ILE:HD13	2.36	0.41
1:B:337:GLN:O	1:B:340:THR:HB	2.21	0.41
1:A:82:GLY:O	1:A:85:ILE:CG2	2.68	0.41
1:A:82:GLY:C	1:A:85:ILE:HG22	2.40	0.41
1:A:242:GLN:HG3	1:A:247:TYR:CE2	2.52	0.41
1:C:8:ILE:HD11	1:C:15:LYS:HE2	2.03	0.41
1:C:374:LEU:C	1:C:376:ASP:H	2.24	0.41
1:A:106:LEU:CD1	1:A:106:LEU:C	2.88	0.41
1:A:336:GLY:HA2	1:A:339:LEU:HG	2.02	0.41
1:B:230:LYS:CD	1:B:230:LYS:C	2.89	0.41
1:C:337:GLN:O	1:C:340:THR:HB	2.21	0.41
1:C:82:GLY:C	1:C:85:ILE:HG22	2.40	0.41
1:A:316:LEU:CD2	1:A:316:LEU:C	2.89	0.41
1:B:196:LYS:HG3	1:C:168:LEU:HD21	1.99	0.41
1:C:40:HIS:CG	1:C:40:HIS:O	2.74	0.41
1:C:282:LEU:HB3	1:C:283:PRO:HD3	2.03	0.41
1:B:75:PRO:HA	1:B:76:ALA:HA	1.50	0.41
1:A:108:ASN:N	1:A:108:ASN:HD22	2.17	0.41
1:B:335:VAL:O	1:B:335:VAL:CG1	2.67	0.41
1:A:36:ALA:O	1:A:37:HIS:C	2.59	0.41
1:A:254:TYR:CD2	1:A:411:ILE:CG2	3.04	0.41
1:B:250:LEU:O	1:B:253:ILE:HG22	2.19	0.41
1:A:160:ILE:HD12	1:A:160:ILE:H	1.85	0.41
1:A:8:ILE:HD11	1:A:15:LYS:HE2	2.03	0.41
1:C:32:HIS:HB2	1:C:33:TYR:HD2	1.83	0.41
1:A:152:LEU:CA	1:A:155:ILE:HD13	2.51	0.40
1:A:230:LYS:CD	1:A:230:LYS:C	2.90	0.40
1:B:144:GLY:O	1:B:145:ALA:C	2.59	0.40
1:A:250:LEU:HD12	1:A:250:LEU:C	2.40	0.40
1:A:374:LEU:C	1:A:376:ASP:H	2.24	0.40

Continued on next page...

Continued from previous page...

Atom-1	Atom-2	Distance(Å)	Clash(Å)
1:B:121:GLN:CG	1:B:122:PHE:H	2.35	0.40
1:A:262:ILE:HG23	1:A:269:MET:CE	2.50	0.40
1:B:336:GLY:HA2	1:B:339:LEU:HG	2.03	0.40
1:C:82:GLY:O	1:C:85:ILE:N	2.54	0.40
1:C:270:LEU:CD2	1:C:270:LEU:N	2.77	0.40
1:A:282:LEU:HB3	1:A:283:PRO:HD3	2.02	0.40
1:C:108:ASN:H	1:C:230:LYS:HZ1	1.68	0.40
1:A:82:GLY:O	1:A:85:ILE:N	2.54	0.40
1:B:289:ALA:CA	1:B:294:ILE:HD12	2.51	0.40
1:B:72:SER:O	1:B:73:ILE:HG12	2.22	0.40
1:C:28:LEU:CD2	1:C:28:LEU:N	2.81	0.40
1:A:189:GLY:O	1:A:193:ALA:CB	2.69	0.40
1:A:369:SER:C	1:A:370:VAL:HG23	2.41	0.40
1:A:324:PHE:HB3	1:A:386:ILE:HD11	2.02	0.40
1:B:339:LEU:C	1:B:339:LEU:CD1	2.89	0.40
1:A:192:GLU:HA	1:A:195:TYR:CD2	2.56	0.40
1:A:257:ASP:HA	1:A:258:PRO:HD2	1.90	0.40
1:A:66:LEU:HD13	1:A:155:ILE:HG23	2.04	0.40
1:B:106:LEU:CD1	1:B:106:LEU:C	2.89	0.40
1:B:151:VAL:C	1:B:155:ILE:HD13	2.41	0.40
1:C:72:SER:C	1:C:73:ILE:CG1	2.89	0.40
1:C:235:VAL:O	1:C:238:GLY:N	2.48	0.40
1:A:121:GLN:CG	1:A:122:PHE:H	2.35	0.40
1:B:62:VAL:HG12	1:B:62:VAL:O	2.21	0.40

All (4) symmetry-related close contacts are listed below. The label for Atom-2 includes the symmetry operator and encoded unit-cell translations to be applied.

Atom-1	Atom-2	Distance(Å)	Clash(Å)
1:A:126:GLN:OE1	1:C:121:GLN:O[3_454]	1.82	0.38
1:B:121:GLN:O	1:B:126:GLN:OE1[3_454]	1.85	0.35
1:A:121:GLN:O	1:C:126:GLN:OE1[3_454]	1.89	0.31
1:B:120:GLN:NE2	1:B:129:PRO:CD[3_454]	2.16	0.04

5.3 Torsion angles

5.3.1 Protein backbone ⓘ

In the following table, the Percentiles column shows the percent Ramachandran outliers of the chain as a percentile score with respect to all X-ray entries followed by that with respect to entries of similar resolution. The Analysed column shows the number of residues for which the backbone conformation was analysed, and the total number of residues.

Mol	Chain	Analysed	Favoured	Allowed	Outliers	Percentiles	
1	A	409/425 (96%)	341 (83%)	47 (12%)	21 (5%)	3	36
1	B	409/425 (96%)	342 (84%)	47 (12%)	20 (5%)	3	38
1	C	409/425 (96%)	341 (83%)	47 (12%)	21 (5%)	3	36
All	All	1227/1275 (96%)	1024 (84%)	141 (12%)	62 (5%)	3	36

All (62) Ramachandran outliers are listed below:

Mol	Chain	Res	Type
1	A	8	ILE
1	A	12	VAL
1	A	73	ILE
1	A	151	VAL
1	A	291	GLU
1	A	358	ALA
1	A	370	VAL
1	B	8	ILE
1	B	12	VAL
1	B	73	ILE
1	B	151	VAL
1	B	291	GLU
1	B	358	ALA
1	B	370	VAL
1	C	8	ILE
1	C	12	VAL
1	C	151	VAL
1	C	291	GLU
1	C	358	ALA
1	C	370	VAL
1	A	7	TYR
1	A	77	ARG
1	A	114	HIS
1	A	117	VAL
1	A	152	LEU
1	A	359	GLY
1	B	77	ARG
1	B	114	HIS
1	B	117	VAL
1	B	359	GLY
1	C	73	ILE
1	C	114	HIS
1	C	117	VAL
1	C	359	GLY

Continued on next page...

Continued from previous page...

Mol	Chain	Res	Type
1	B	7	TYR
1	B	152	LEU
1	C	7	TYR
1	C	77	ARG
1	C	152	LEU
1	A	34	GLY
1	A	58	VAL
1	A	212	LEU
1	B	58	VAL
1	C	58	VAL
1	C	79	GLY
1	C	235	VAL
1	A	79	GLY
1	A	155	ILE
1	A	235	VAL
1	B	34	GLY
1	B	155	ILE
1	B	235	VAL
1	B	259	ILE
1	C	34	GLY
1	C	155	ILE
1	C	259	ILE
1	A	10	TYR
1	A	259	ILE
1	B	10	TYR
1	B	79	GLY
1	C	10	TYR
1	C	142	PRO

5.3.2 Protein sidechains ⓘ

In the following table, the Percentiles column shows the percent sidechain outliers of the chain as a percentile score with respect to all X-ray entries followed by that with respect to entries of similar resolution. The Analysed column shows the number of residues for which the sidechain conformation was analysed, and the total number of residues.

Mol	Chain	Analysed	Rotameric	Outliers	Percentiles	
1	A	316/331 (96%)	310 (98%)	6 (2%)	69	93
1	B	316/331 (96%)	310 (98%)	6 (2%)	69	93
1	C	316/331 (96%)	310 (98%)	6 (2%)	69	93
All	All	948/993 (96%)	930 (98%)	18 (2%)	69	93

All (18) residues with a non-rotameric sidechain are listed below:

Mol	Chain	Res	Type
1	A	78	LEU
1	A	106	LEU
1	A	178	LYS
1	A	230	LYS
1	A	252	LYS
1	A	339	LEU
1	B	78	LEU
1	B	106	LEU
1	B	178	LYS
1	B	230	LYS
1	B	252	LYS
1	B	339	LEU
1	C	78	LEU
1	C	106	LEU
1	C	178	LYS
1	C	230	LYS
1	C	252	LYS
1	C	339	LEU

Some sidechains can be flipped to improve hydrogen bonding and reduce clashes. All (16) such sidechains are listed below:

Mol	Chain	Res	Type
1	A	40	HIS
1	A	108	ASN
1	A	337	GLN
1	A	338	GLN
1	A	368	HIS
1	B	40	HIS
1	B	108	ASN
1	B	141	ASN
1	B	337	GLN
1	B	338	GLN
1	B	368	HIS
1	C	40	HIS
1	C	108	ASN
1	C	337	GLN
1	C	338	GLN
1	C	368	HIS

5.3.3 RNA ⓘ

There are no RNA chains in this entry.

5.4 Non-standard residues in protein, DNA, RNA chains ⓘ

There are no non-standard protein/DNA/RNA residues in this entry.

5.5 Carbohydrates ⓘ

There are no carbohydrates in this entry.

5.6 Ligand geometry ⓘ

Of 12 ligands modelled in this entry, 9 are monoatomic - leaving 3 for Mogul analysis.

In the following table, the Counts columns list the number of bonds (or angles) for which Mogul statistics could be retrieved, the number of bonds (or angles) that are observed in the model and the number of bonds (or angles) that are defined in the chemical component dictionary. The Link column lists molecule types, if any, to which the group is linked. The Z score for a bond length (or angle) is the number of standard deviations the observed value is removed from the expected value. A bond length (or angle) with $|Z| > 2$ is considered an outlier worth inspection. RMSZ is the root-mean-square of all Z scores of the bond lengths (or angles).

Mol	Type	Chain	Res	Link	Bond lengths			Bond angles		
					Counts	RMSZ	$\# Z > 2$	Counts	RMSZ	$\# Z > 2$
2	ASP	A	500	-	8,8,8	0.90	0	10,10,10	1.30	1 (10%)
2	ASP	B	500	-	8,8,8	0.94	0	10,10,10	1.24	1 (10%)
2	ASP	C	500	-	8,8,8	0.94	0	10,10,10	1.28	1 (10%)

In the following table, the Chirals column lists the number of chiral outliers, the number of chiral centers analysed, the number of these observed in the model and the number defined in the chemical component dictionary. Similar counts are reported in the Torsion and Rings columns. '-' means no outliers of that kind were identified.

Mol	Type	Chain	Res	Link	Chirals	Torsions	Rings
2	ASP	A	500	-	-	0/8/8/8	0/0/0/0
2	ASP	B	500	-	-	0/8/8/8	0/0/0/0
2	ASP	C	500	-	-	0/8/8/8	0/0/0/0

There are no bond length outliers.

All (3) bond angle outliers are listed below:

Mol	Chain	Res	Type	Atoms	Z	Observed($^{\circ}$)	Ideal($^{\circ}$)
2	C	500	ASP	OXT-C-O	-2.82	117.70	124.07
2	A	500	ASP	OXT-C-O	-2.77	117.80	124.07
2	B	500	ASP	OXT-C-O	-2.66	118.05	124.07

There are no chirality outliers.

There are no torsion outliers.

There are no ring outliers.

5.7 Other polymers ⓘ

There are no such residues in this entry.

5.8 Polymer linkage issues

There are no chain breaks in this entry.

6 Fit of model and data

6.1 Protein, DNA and RNA chains

In the following table, the column labelled ‘#RSRZ> 2’ contains the number (and percentage) of RSRZ outliers, followed by percent RSRZ outliers for the chain as percentile scores relative to all X-ray entries and entries of similar resolution. The OWAB column contains the minimum, median, 95th percentile and maximum values of the occupancy-weighted average B-factor per residue. The column labelled ‘Q< 0.9’ lists the number of (and percentage) of residues with an average occupancy less than 0.9.

Mol	Chain	Analysed	<RSRZ>	#RSRZ>2	OWAB(Å ²)	Q<0.9
1	A	411/425 (96%)	0.03	9 (2%) 59 29	94, 101, 104, 109	0
1	B	411/425 (96%)	0.17	18 (4%) 33 15	94, 101, 104, 109	0
1	C	411/425 (96%)	0.20	20 (4%) 28 13	95, 101, 104, 108	0
All	All	1233/1275 (96%)	0.13	47 (3%) 38 18	94, 101, 104, 109	0

All (47) RSRZ outliers are listed below:

Mol	Chain	Res	Type	RSRZ
1	C	78	LEU	5.3
1	C	254	TYR	4.1
1	C	411	ILE	4.0
1	C	385	MET	4.0
1	B	34	GLY	3.9
1	C	81	VAL	3.9
1	C	407	THR	3.9
1	B	299	TYR	3.5
1	B	254	TYR	3.5
1	B	256	ILE	3.4
1	C	382	ALA	3.4
1	C	80	ARG	3.3
1	B	248	PHE	3.3
1	B	268	ALA	3.2
1	B	259	ILE	3.1
1	C	409	THR	3.1
1	B	410	ALA	3.1
1	A	287	ARG	3.0
1	B	33	TYR	2.9
1	C	79	GLY	2.9
1	B	251	LEU	2.9
1	C	414	LYS	2.9
1	B	250	LEU	2.8

Continued on next page...

Continued from previous page...

Mol	Chain	Res	Type	RSRZ
1	A	371	GLY	2.7
1	B	35	TYR	2.7
1	B	296	GLU	2.7
1	A	372	LEU	2.7
1	A	291	GLU	2.7
1	B	252	LYS	2.7
1	A	80	ARG	2.6
1	C	84	LYS	2.6
1	C	247	TYR	2.6
1	B	297	GLY	2.5
1	A	385	MET	2.5
1	B	372	LEU	2.3
1	C	383	TYR	2.3
1	C	410	ALA	2.3
1	C	82	GLY	2.3
1	C	406	LEU	2.2
1	A	172	GLU	2.2
1	B	298	ILE	2.2
1	A	14	GLN	2.1
1	C	203	GLN	2.1
1	B	389	ILE	2.1
1	C	386	ILE	2.1
1	C	85	ILE	2.0
1	A	370	VAL	2.0

6.2 Non-standard residues in protein, DNA, RNA chains ⓘ

There are no non-standard protein/DNA/RNA residues in this entry.

6.3 Carbohydrates ⓘ

There are no carbohydrates in this entry.

6.4 Ligands ⓘ

In the following table, the Atoms column lists the number of modelled atoms in the group and the number defined in the chemical component dictionary. LLDF column lists the quality of electron density of the group with respect to its neighbouring residues in protein, DNA or RNA chains. The B-factors column lists the minimum, median, 95th percentile and maximum values of B factors of atoms in the group. The column labelled 'Q < 0.9' lists the number of atoms with occupancy less than 0.9.

Mol	Type	Chain	Res	Atoms	RSR	LLDF	B-factors(\AA^2)	Q<0.9
4	NA	A	454	1/1	0.34	0.89	86,86,86,86	0
4	NA	A	453	1/1	0.39	0.50	97,97,97,97	0
2	ASP	A	500	9/9	0.31	-0.12	107,107,108,108	0
4	NA	B	454	1/1	0.23	-0.54	85,85,85,85	0
4	NA	C	453	1/1	0.27	-0.92	98,98,98,98	0
3	HG	C	501	1/1	0.06	-1.14	94,94,94,94	1
2	ASP	B	500	9/9	0.15	-1.48	107,107,107,107	0
4	NA	B	453	1/1	0.26	-1.64	98,98,98,98	0
2	ASP	C	500	9/9	0.15	-1.65	107,108,108,108	0
4	NA	C	454	1/1	0.12	-1.95	86,86,86,86	0
3	HG	B	501	1/1	0.04	-2.07	92,92,92,92	1
3	HG	A	501	1/1	0.06	-2.43	95,95,95,95	1

6.5 Other polymers ⓘ

There are no such residues in this entry.