



Full wwPDB X-ray Structure Validation Report ⓘ

Mar 31, 2014 – 03:28 PM BST

PDB ID : 4KB7
Title : HCV NS5B GT1B N316Y with CMPD 32
Authors : Williams, S.P.; Kahler, K.M.; Shotwell, J.B.
Deposited on : 2013-04-23
Resolution : 1.85 Å(reported)

This is a full wwPDB validation report for a publicly released PDB entry.
We welcome your comments at validation@mail.wwpdb.org
A user guide is available at <http://wwpdb.org/ValidationPDFNotes.html>

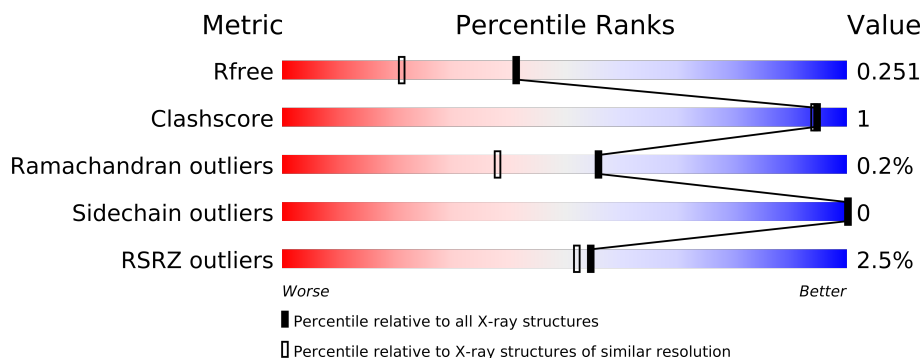
The following versions of software and data (see [references](#)) were used in the production of this report:

MolProbity : 4.02b-467
Mogul : 1.15 2013
Xtriage (Phenix) : dev-1323
EDS : stable23004
Percentile statistics : 21963
Refmac : 5.8.0049
CCP4 : 6.3.0 (Settle)
Ideal geometry (proteins) : Engh & Huber (2001)
Ideal geometry (DNA, RNA) : Parkinson et. al. (1996)
Validation Pipeline (wwPDB-VP) : stable23004

1 Overall quality at a glance

The reported resolution of this entry is 1.85 Å.

Percentile scores (ranging between 0-100) for global validation metrics of the entry are shown in the following graphic. The table shows the number of entries on which the scores are based.



Metric	Whole archive (#Entries)	Similar resolution (#Entries, resolution range(Å))
R_{free}	66092	1269 (1.86-1.86)
Clashscore	79885	1470 (1.86-1.86)
Ramachandran outliers	78287	1451 (1.86-1.86)
Sidechain outliers	78261	1451 (1.86-1.86)
RSRZ outliers	66119	1269 (1.86-1.86)

The table below summarises the geometric issues observed across the polymeric chains and their fit to the electron density. The red, orange, yellow and green segments on the lower bar indicate the fraction of residues that contain outliers for ≥ 3 , 2, 1 and 0 types of geometric quality criteria. The upper red bar (where present) indicates the fraction of residues that have poor fit to the electron density.

Mol	Chain	Length	Quality of chain
1	A	580	
1	B	580	

2 Entry composition

There are 3 unique types of molecules in this entry. The entry contains 9368 atoms, of which 0 are hydrogen and 0 are deuterium.

In the tables below, the ZeroOcc column contains the number of atoms modelled with zero occupancy, the AltConf column contains the number of residues with at least one atom in alternate conformation and the Trace column contains the number of residues modelled with at most 2 atoms.

- Molecule 1 is a protein called HCV Polymerase.

Mol	Chain	Residues	Atoms					ZeroOcc	AltConf	Trace
1	A	545	Total	C	N	O	S	0	12	0
			4231	2675	731	790	35			
1	B	548	Total	C	N	O	S	0	10	0
			4237	2682	727	794	34			

There are 28 discrepancies between the modelled and reference sequences:

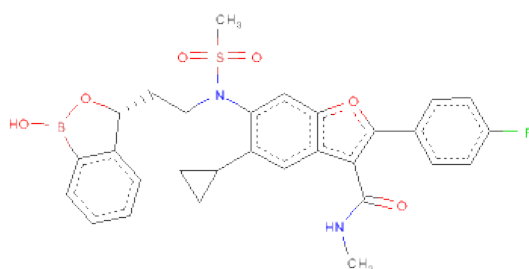
Chain	Residue	Modelled	Actual	Comment	Reference
A	-1	MET	-	EXPRESSION TAG	UNP P26663
A	0	ALA	-	EXPRESSION TAG	UNP P26663
A	47	GLN	LEU	ENGINEERED MUTATION	UNP P26663
A	101	TYR	PHE	ENGINEERED MUTATION	UNP P26663
A	114	ARG	LYS	ENGINEERED MUTATION	UNP P26663
A	316	TYR	ASN	ENGINEERED MUTATION	UNP P26663
A	571	LEU	-	EXPRESSION TAG	UNP P26663
A	572	GLU	-	EXPRESSION TAG	UNP P26663
A	573	HIS	-	EXPRESSION TAG	UNP P26663
A	574	HIS	-	EXPRESSION TAG	UNP P26663
A	575	HIS	-	EXPRESSION TAG	UNP P26663
A	576	HIS	-	EXPRESSION TAG	UNP P26663
A	577	HIS	-	EXPRESSION TAG	UNP P26663
A	578	HIS	-	EXPRESSION TAG	UNP P26663
B	-1	MET	-	EXPRESSION TAG	UNP P26663
B	0	ALA	-	EXPRESSION TAG	UNP P26663
B	47	GLN	LEU	ENGINEERED MUTATION	UNP P26663
B	101	TYR	PHE	ENGINEERED MUTATION	UNP P26663
B	114	ARG	LYS	ENGINEERED MUTATION	UNP P26663
B	316	TYR	ASN	ENGINEERED MUTATION	UNP P26663
B	571	LEU	-	EXPRESSION TAG	UNP P26663
B	572	GLU	-	EXPRESSION TAG	UNP P26663
B	573	HIS	-	EXPRESSION TAG	UNP P26663
B	574	HIS	-	EXPRESSION TAG	UNP P26663
B	575	HIS	-	EXPRESSION TAG	UNP P26663

Continued on next page...

Continued from previous page...

Chain	Residue	Modelled	Actual	Comment	Reference
B	576	HIS	-	EXPRESSION TAG	UNP P26663
B	577	HIS	-	EXPRESSION TAG	UNP P26663
B	578	HIS	-	EXPRESSION TAG	UNP P26663

- Molecule 2 is 5-CYCLOPROPYL-2-(4-FLUOROPHENYL)-6-[{2-[(3R)-1-HYDROXY-1,3-DIHYDRO-2,1-BENZOXABOROL-3-YL]ETHYL}(METHYLSULFONYL)AMINO]-N-METHYL-1-BENZOFURAN-3-CARBOXAMIDE (three-letter code: 690) (formula: C₂₉H₂₈BFN₂O₆S).



Mol	Chain	Residues	Atoms							ZeroOcc	AltConf
			Total	B	C	F	N	O	S		
2	A	1	Total 40	1	29	1	2	6	1	0	0
2	B	1	Total 40	1	29	1	2	6	1	0	0

- Molecule 3 is water.

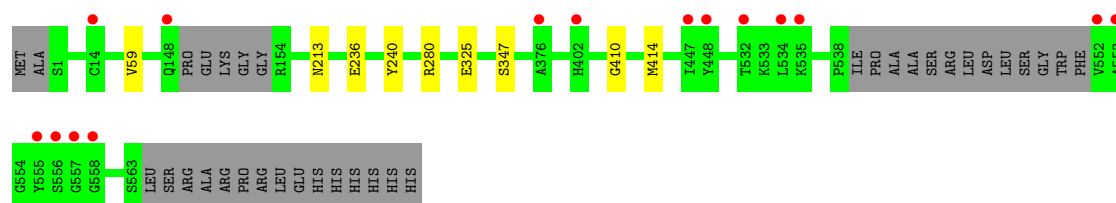
Mol	Chain	Residues	Atoms		ZeroOcc	AltConf
3	A	424	Total 424	O 424	0	0
3	B	396	Total 396	O 396	0	0

3 Residue-property plots

These plots are drawn for all protein, RNA and DNA chains in the entry. The first graphic for a chain summarises the proportions of errors displayed in the second graphic. The second graphic shows the sequence view annotated by issues in geometry and electron density. Residues are color-coded according to the number of geometric quality criteria for which they contain at least one outlier: green = 0, yellow = 1, orange = 2 and red = 3 or more. A red dot above a residue indicates a poor fit to the electron density ($RSRZ > 2$). Stretches of 2 or more consecutive residues without any outlier are shown as a green connector. Residues present in the sample, but not in the model, are shown in grey.

• Molecule 1: HCV Polymerase

Chain A: 



• Molecule 1: HCV Polymerase

Chain B: 



4 Data and refinement statistics

Property	Value	Source
Space group	P 21 21 21	Depositor
Cell constants a, b, c, α , β , γ	86.03Å 106.62Å 126.52Å 90.00° 90.00° 90.00°	Depositor
Resolution (Å)	81.53 – 1.85 45.98 – 1.85	Depositor EDS
% Data completeness (in resolution range)	92.4 (81.53-1.85) 92.4 (45.98-1.85)	Depositor EDS
R_{merge}	0.07	Depositor
R_{sym}	0.07	Depositor
$\langle I/\sigma(I) \rangle$ ¹	2.18 (at 1.86Å)	Xtriage
Refinement program	REFMAC 5.5.0109	Depositor
R, R_{free}	0.208 , 0.241 0.218 , 0.251	Depositor DCC
R_{free} test set	4626 reflections (5.28%)	DCC
Wilson B-factor (Å ²)	18.7	Xtriage
Anisotropy	0.151	Xtriage
Bulk solvent k_{sol} (e/Å ³), B_{sol} (Å ²)	0.36 , 23.1	EDS
Estimated twinning fraction	No twinning to report.	Xtriage
L-test for twinning	$\langle L \rangle = 0.48$, $\langle L^2 \rangle = 0.31$	Xtriage
Outliers	5 of 92220 reflections (0.005%)	Xtriage
F_o, F_c correlation	0.94	EDS
Total number of atoms	9368	wwPDB-VP
Average B, all atoms (Å ²)	18.0	wwPDB-VP

Xtriage's analysis on translational NCS is as follows: *The analyses of the Patterson function reveals a significant off-origin peak that is 50.09 % of the origin peak, indicating pseudo translational symmetry. The chance of finding a peak of this or larger height randomly in a structure without pseudo translational symmetry is equal to 6.7967e-05. The detected translational NCS is most likely also responsible for the elevated intensity ratio.*

¹Intensities estimated from amplitudes.

5 Model quality i

5.1 Standard geometry i

Bond lengths and bond angles in the following residue types are not validated in this section: 690

The Z score for a bond length (or angle) is the number of standard deviations the observed value is removed from the expected value. A bond length (or angle) with $|Z| > 5$ is considered an outlier worth inspection. RMSZ is the root-mean-square of all Z scores of the bond lengths (or angles).

Mol	Chain	Bond lengths		Bond angles	
		RMSZ	# Z >5	RMSZ	# Z >5
1	A	0.29	0/4368	0.47	0/5937
1	B	0.29	0/4357	0.47	1/5925 (0.0%)
All	All	0.29	0/8725	0.47	1/11862 (0.0%)

There are no bond length outliers.

All (1) bond angle outliers are listed below:

Mol	Chain	Res	Type	Atoms	Z	Observed(°)	Ideal(°)
1	B	149	PRO	N-CA-CB	5.77	110.22	103.30

There are no chirality outliers.

There are no planarity outliers.

5.2 Close contacts i

In the following table, the Non-H and H(model) columns list the number of non-hydrogen atoms and hydrogen atoms in the chain respectively. The H(added) column lists the number of hydrogens added by MolProbity. The Clashes column lists the number of clashes within the asymmetric unit, and the number in parentheses is this value normalized per 1000 atoms of the molecule in the chain. The Symm-Clashes column gives symmetry related clashes, in the same way as for the Clashes column.

Mol	Chain	Non-H	H(model)	H(added)	Clashes	Symm-Clashes
1	A	4231	0	0	7	0
1	B	4237	0	0	5	0
2	A	40	0	0	2	0
2	B	40	0	0	0	0
3	A	424	0	0	1	0
3	B	396	0	0	1	0

Continued on next page...

Continued from previous page...

Mol	Chain	Non-H	H(model)	H(added)	Clashes	Symm-Clashes
All	All	9368	0	0	12	0

Clashscore is defined as the number of clashes calculated for the entry per 1000 atoms (including hydrogens) of the entry. The overall clashscore for this entry is 1.

All (12) close contacts within the same asymmetric unit are listed below.

Atom-1	Atom-2	Distance(Å)	Clash(Å)
1:A:410:GLY:O	1:A:414[B]:MET:CE	2.46	0.64
1:A:410:GLY:C	1:A:414[B]:MET:CE	2.70	0.60
1:A:280:ARG:NH2	3:A:1120:HOH:O	2.40	0.54
1:B:414[B]:MET:CA	1:B:414[B]:MET:CE	2.86	0.53
1:B:280:ARG:NH2	3:B:1096:HOH:O	2.43	0.50
1:A:414[A]:MET:CE	2:A:601:690:C25	2.91	0.48
1:B:236:GLU:OE2	1:B:240:TYR:OH	2.31	0.48
1:A:213:ASN:N	1:A:325:GLU:OE2	2.48	0.46
2:A:601:690:C12	2:A:601:690:C31	2.95	0.44
1:A:236:GLU:OE2	1:A:240:TYR:OH	2.36	0.44
1:A:59:VAL:CG1	1:B:59:VAL:CG1	2.99	0.41
1:B:182:LEU:N	1:B:183:PRO:CD	2.83	0.41

There are no symmetry-related clashes.

5.3 Torsion angles

5.3.1 Protein backbone ⓘ

In the following table, the Percentiles column shows the percent Ramachandran outliers of the chain as a percentile score with respect to all X-ray entries followed by that with respect to entries of similar resolution. The Analysed column shows the number of residues for which the backbone conformation was analysed, and the total number of residues.

Mol	Chain	Analysed	Favoured	Allowed	Outliers	Percentiles	
1	A	550/580 (95%)	543 (99%)	6 (1%)	1 (0%)	56	38
1	B	552/580 (95%)	543 (98%)	7 (1%)	2 (0%)	43	24
All	All	1102/1160 (95%)	1086 (98%)	13 (1%)	3 (0%)	56	32

All (3) Ramachandran outliers are listed below:

Mol	Chain	Res	Type
1	A	347	SER

Continued on next page...

Continued from previous page...

Mol	Chain	Res	Type
1	B	347[A]	SER
1	B	347[B]	SER

5.3.2 Protein sidechains ⓘ

In the following table, the Percentiles column shows the percent sidechain outliers of the chain as a percentile score with respect to all X-ray entries followed by that with respect to entries of similar resolution. The Analysed column shows the number of residues for which the sidechain conformation was analysed, and the total number of residues.

Mol	Chain	Analysed	Rotameric	Outliers	Percentiles	
1	A	456/494 (92%)	456 (100%)	0	100	100
1	B	451/494 (91%)	451 (100%)	0	100	100
All	All	907/988 (92%)	907 (100%)	0	100	100

There are no protein residues with a non-rotameric sidechain to report.

Some sidechains can be flipped to improve hydrogen bonding and reduce clashes. There are no such sidechains identified.

5.3.3 RNA ⓘ

There are no RNA chains in this entry.

5.4 Non-standard residues in protein, DNA, RNA chains ⓘ

There are no non-standard protein/DNA/RNA residues in this entry.

5.5 Carbohydrates ⓘ

There are no carbohydrates in this entry.

5.6 Ligand geometry ⓘ

2 ligands are modelled in this entry.

In the following table, the Counts columns list the number of bonds (or angles) for which Mogul statistics could be retrieved, the number of bonds (or angles) that are observed in the model and the number of bonds (or angles) that are defined in the chemical component dictionary. The Link

column lists molecule types, if any, to which the group is linked. The Z score for a bond length (or angle) is the number of standard deviations the observed value is removed from the expected value. A bond length (or angle) with $|Z| > 2$ is considered an outlier worth inspection. RMSZ is the root-mean-square of all Z scores of the bond lengths (or angles).

Mol	Type	Chain	Res	Link	Bond lengths			Bond angles		
					Counts	RMSZ	# Z > 2	Counts	RMSZ	# Z > 2
2	690	A	601	-	43,45,45	2.48	8 (18%)	64,68,68	3.09	20 (31%)
2	690	B	601	-	43,45,45	2.48	9 (20%)	64,68,68	3.04	20 (31%)

In the following table, the Chirals column lists the number of chiral outliers, the number of chiral centers analysed, the number of these observed in the model and the number defined in the chemical component dictionary. Similar counts are reported in the Torsion and Rings columns. '-' means no outliers of that kind were identified.

Mol	Type	Chain	Res	Link	Chirals	Torsions	Rings
2	690	A	601	-	-	2/29/43/43	0/1/6/6
2	690	B	601	-	-	2/29/43/43	0/1/6/6

All (17) bond length outliers are listed below:

Mol	Chain	Res	Type	Atoms	Z	Observed(Å)	Ideal(Å)
2	B	601	690	B16-O17	11.12	1.54	1.36
2	A	601	690	B16-O17	11.01	1.53	1.36
2	A	601	690	C25-S24	-5.02	1.65	1.75
2	B	601	690	B16-C18	-4.67	1.48	1.55
2	B	601	690	C5-C30	4.64	1.49	1.42
2	B	601	690	C25-S24	-4.64	1.66	1.75
2	A	601	690	B16-C18	-4.58	1.48	1.55
2	A	601	690	C5-C30	4.52	1.49	1.42
2	A	601	690	B16-O15	3.99	1.44	1.39
2	B	601	690	B16-O15	3.99	1.44	1.39
2	A	601	690	C29-C28	3.30	1.41	1.36
2	B	601	690	C29-C28	3.23	1.41	1.36
2	A	601	690	C23-C18	-3.15	1.37	1.40
2	B	601	690	C23-C18	-2.85	1.37	1.40
2	B	601	690	C9-C10	2.40	1.40	1.37
2	A	601	690	C9-C10	2.22	1.40	1.37
2	B	601	690	C34-C6	2.15	1.49	1.46

All (40) bond angle outliers are listed below:

Mol	Chain	Res	Type	Atoms	Z	Observed(°)	Ideal(°)
2	B	601	690	C28-C10-N11	10.57	128.11	119.73
2	A	601	690	C28-C10-N11	9.95	127.62	119.73
2	A	601	690	O27-S24-O26	-7.95	107.58	118.68
2	A	601	690	C5-C30-C8	-7.73	101.96	107.44
2	B	601	690	O27-S24-O26	-7.50	108.21	118.68
2	B	601	690	C5-C30-C8	-7.28	102.28	107.44
2	A	601	690	C9-C10-N11	-6.48	112.65	119.76
2	B	601	690	O15-B16-C18	-6.20	104.02	108.54
2	B	601	690	C9-C10-N11	-6.17	112.99	119.76
2	A	601	690	C25-S24-N11	6.05	113.10	105.47
2	A	601	690	O15-B16-C18	-5.93	104.21	108.54
2	A	601	690	C33-C31-C28	-5.61	115.96	121.47
2	B	601	690	C25-S24-N11	5.58	112.50	105.47
2	A	601	690	B16-C18-C23	5.54	108.97	104.79
2	B	601	690	C33-C31-C28	-5.36	116.20	121.47
2	B	601	690	B16-C18-C23	5.31	108.80	104.79
2	B	601	690	C10-N11-S24	-5.10	110.51	118.91
2	A	601	690	O17-B16-C18	-5.03	118.38	129.88
2	B	601	690	O7-C6-C34	4.83	125.37	117.12
2	B	601	690	O17-B16-C18	-4.65	119.25	129.88
2	A	601	690	C10-N11-S24	-4.43	111.61	118.91
2	A	601	690	O7-C6-C34	4.34	124.53	117.12
2	A	601	690	O26-S24-N11	4.31	112.49	107.73
2	A	601	690	C12-N11-C10	-4.21	112.79	117.42
2	A	601	690	C5-C6-C34	4.16	132.17	127.50
2	B	601	690	O26-S24-N11	4.02	112.17	107.73
2	B	601	690	C5-C6-C34	3.69	131.65	127.50
2	B	601	690	C6-O7-C8	3.68	112.34	105.39
2	A	601	690	C6-O7-C8	3.54	112.08	105.39
2	B	601	690	B16-O15-C14	3.41	112.45	107.21
2	A	601	690	C30-C5-C3	-3.05	120.93	125.80
2	A	601	690	B16-O15-C14	3.04	111.89	107.21
2	B	601	690	C30-C5-C3	-2.91	121.15	125.80
2	A	601	690	B16-C18-C19	-2.90	128.99	135.50
2	B	601	690	C20-C19-C18	-2.89	117.87	121.58
2	B	601	690	B16-C18-C19	-2.85	129.11	135.50
2	A	601	690	C20-C19-C18	-2.74	118.05	121.58
2	B	601	690	C12-N11-S24	-2.71	112.56	117.99
2	B	601	690	C39-C37-C36	-2.15	119.97	122.90
2	A	601	690	C39-C37-C36	-2.02	120.15	122.90

There are no chirality outliers.

All (4) torsion outliers are listed below:

Mol	Chain	Res	Type	Atoms
2	B	601	690	O4-C3-C5-C6
2	B	601	690	C6-C5-C3-N2
2	A	601	690	O4-C3-C5-C6
2	A	601	690	C6-C5-C3-N2

There are no ring outliers.

5.7 Other polymers ⓘ

There are no such residues in this entry.

5.8 Polymer linkage issues

There are no chain breaks in this entry.

6 Fit of model and data

6.1 Protein, DNA and RNA chains

In the following table, the column labelled ‘#RSRZ> 2’ contains the number (and percentage) of RSRZ outliers, followed by percent RSRZ outliers for the chain as percentile scores relative to all X-ray entries and entries of similar resolution. The OWAB column contains the minimum, median, 95th percentile and maximum values of the occupancy-weighted average B-factor per residue. The column labelled ‘Q< 0.9’ lists the number of (and percentage) of residues with an average occupancy less than 0.9.

Mol	Chain	Analysed	<RSRZ>	#RSRZ>2		OWAB(Å ²)	Q<0.9
1	A	545/580 (93%)	0.13	15 (2%)	50 47	7, 17, 28, 40	2 (0%)
1	B	548/580 (94%)	0.16	12 (2%)	59 57	8, 19, 29, 43	2 (0%)
All	All	1093/1160 (94%)	0.14	27 (2%)	54 52	7, 18, 29, 43	4 (0%)

All (27) RSRZ outliers are listed below:

Mol	Chain	Res	Type	RSRZ
1	A	556	SER	6.0
1	B	534	LEU	5.3
1	A	557	GLY	5.1
1	A	553	ALA	4.6
1	A	534	LEU	4.0
1	A	14	CYS	3.9
1	B	557	GLY	3.8
1	A	558	GLY	3.7
1	B	535	LYS	3.7
1	A	532	THR	3.6
1	A	402	HIS	3.1
1	B	14	CYS	3.1
1	B	556	SER	3.0
1	A	447	ILE	2.9
1	B	532	THR	2.8
1	B	35	ASN	2.6
1	A	448	TYR	2.6
1	B	148	GLN	2.5
1	A	555	TYR	2.4
1	B	448	TYR	2.3
1	A	552	VAL	2.3
1	B	316[A]	TYR	2.3
1	A	148[A]	GLN	2.2
1	A	535	LYS	2.2

Continued on next page...

Continued from previous page...

Mol	Chain	Res	Type	RSRZ
1	A	376	ALA	2.2
1	B	352	ASP	2.1
1	B	150	GLU	2.0

6.2 Non-standard residues in protein, DNA, RNA chains ⓘ

There are no non-standard protein/DNA/RNA residues in this entry.

6.3 Carbohydrates ⓘ

There are no carbohydrates in this entry.

6.4 Ligands ⓘ

In the following table, the Atoms column lists the number of modelled atoms in the group and the number defined in the chemical component dictionary. LLDF column lists the quality of electron density of the group with respect to its neighbouring residues in protein, DNA or RNA chains. The B-factors column lists the minimum, median, 95th percentile and maximum values of B factors of atoms in the group. The column labelled 'Q < 0.9' lists the number of atoms with occupancy less than 0.9.

Mol	Type	Chain	Res	Atoms	RSR	LLDF	B-factors(Å ²)	Q<0.9
2	690	B	601	40/40	0.21	1.83	33,36,40,40	0
2	690	A	601	40/40	0.19	0.99	21,25,33,33	0

6.5 Other polymers ⓘ

There are no such residues in this entry.