



Full wwPDB X-ray Structure Validation Report

Feb 28, 2014 – 02:30 PM GMT

PDB ID : 3KL0
Title : Crystal structure of the glucuronoxylan xylanohydrolase XynC from *Bacillus subtilis*
Authors : St John, F.J.; Hurlbert, J.C.; Pozharski, E.
Deposited on : 2009-11-06
Resolution : 1.64 Å(reported)

This is a full wwPDB validation report for a publicly released PDB entry.
We welcome your comments at validation@mail.wwpdb.org
A user guide is available at <http://wwpdb.org/ValidationPDFNotes.html>

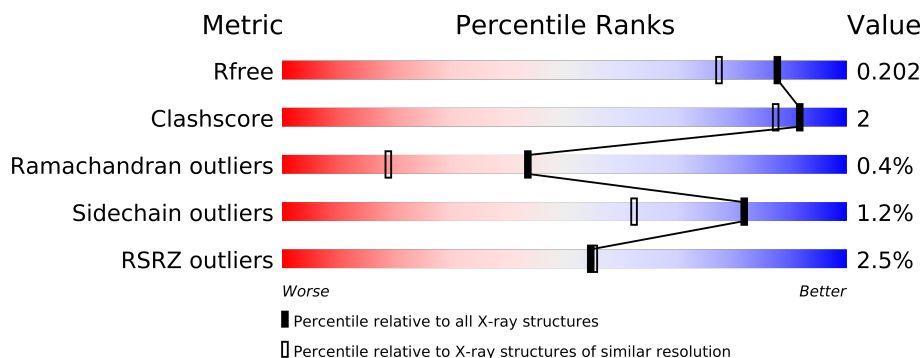
The following versions of software and data (see [references](#)) were used in the production of this report:

MolProbity : 4.02b-467
Mogul : 1.15 2013
Xtriage (Phenix) : dev-1323
EDS : stable22639
Percentile statistics : 21963
Refmac : 5.8.0049
CCP4 : 6.3.0 (Settle)
Ideal geometry (proteins) : Engh & Huber (2001)
Ideal geometry (DNA, RNA) : Parkinson et. al. (1996)
Validation Pipeline (wwPDB-VP) : stable22683

1 Overall quality at a glance

The reported resolution of this entry is 1.64 Å.

Percentile scores (ranging between 0-100) for global validation metrics of the entry are shown in the following graphic. The table shows the number of entries on which the scores are based.



Metric	Whole archive (#Entries)	Similar resolution (#Entries, resolution range(Å))
R_{free}	66092	1326 (1.66-1.62)
Clashscore	79885	1525 (1.66-1.62)
Ramachandran outliers	78287	1490 (1.66-1.62)
Sidechain outliers	78261	1490 (1.66-1.62)
RSRZ outliers	66119	1326 (1.66-1.62)

The table below summarises the geometric issues observed across the polymeric chains and their fit to the electron density. The red, orange, yellow and green segments on the lower bar indicate the fraction of residues that contain outliers for ≥ 3 , 2, 1 and 0 types of geometric quality criteria. The upper red bar (where present) indicates the fraction of residues that have poor fit to the electron density.

Mol	Chain	Length	Quality of chain
1	A	401	
1	B	401	
1	C	401	
1	D	401	

The following table lists non-polymeric compounds that are outliers for geometric or electron-density-fit criteria:

Mol	Type	Chain	Res	Geometry	Electron density
2	MLA	A	402	-	X
2	MLA	A	403	-	X
4	HIS	A	405	-	X
4	HIS	A	406[A]	-	X
4	HIS	A	406[B]	-	X

2 Entry composition

There are 6 unique types of molecules in this entry. The entry contains 15095 atoms, of which 0 are hydrogen and 0 are deuterium.

In the tables below, the ZeroOcc column contains the number of atoms modelled with zero occupancy, the AltConf column contains the number of residues with at least one atom in alternate conformation and the Trace column contains the number of residues modelled with at most 2 atoms.

- Molecule 1 is a protein called Glucuronoxylanase xynC.

Mol	Chain	Residues	Atoms					ZeroOcc	AltConf	Trace
1	A	397	Total	C	N	O	S	1	15	0
			3244	2057	576	602	9			
1	B	394	Total	C	N	O	S	1	12	0
			3216	2034	570	603	9			
1	C	391	Total	C	N	O	S	0	20	0
			3222	2047	566	600	9			
1	D	389	Total	C	N	O	S	0	7	0
			3149	1996	556	588	9			

There are 44 discrepancies between the modelled and reference sequences:

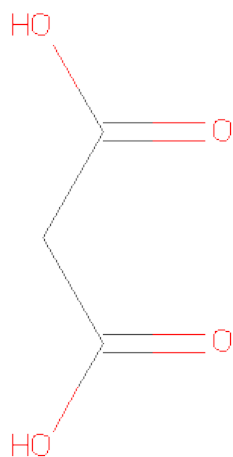
Chain	Residue	Modelled	Actual	Comment	Reference
A	1	MET	-	EXPRESSION TAG	UNP Q45070
A	392	LEU	-	EXPRESSION TAG	UNP Q45070
A	393	GLU	-	EXPRESSION TAG	UNP Q45070
A	394	HIS	-	EXPRESSION TAG	UNP Q45070
A	395	HIS	-	EXPRESSION TAG	UNP Q45070
A	396	HIS	-	EXPRESSION TAG	UNP Q45070
A	397	HIS	-	EXPRESSION TAG	UNP Q45070
A	398	HIS	-	EXPRESSION TAG	UNP Q45070
A	399	HIS	-	EXPRESSION TAG	UNP Q45070
A	400	HIS	-	EXPRESSION TAG	UNP Q45070
A	401	HIS	-	EXPRESSION TAG	UNP Q45070
B	1	MET	-	EXPRESSION TAG	UNP Q45070
B	392	LEU	-	EXPRESSION TAG	UNP Q45070
B	393	GLU	-	EXPRESSION TAG	UNP Q45070
B	394	HIS	-	EXPRESSION TAG	UNP Q45070
B	395	HIS	-	EXPRESSION TAG	UNP Q45070
B	396	HIS	-	EXPRESSION TAG	UNP Q45070
B	397	HIS	-	EXPRESSION TAG	UNP Q45070
B	398	HIS	-	EXPRESSION TAG	UNP Q45070
B	399	HIS	-	EXPRESSION TAG	UNP Q45070
B	400	HIS	-	EXPRESSION TAG	UNP Q45070

Continued on next page...

Continued from previous page...

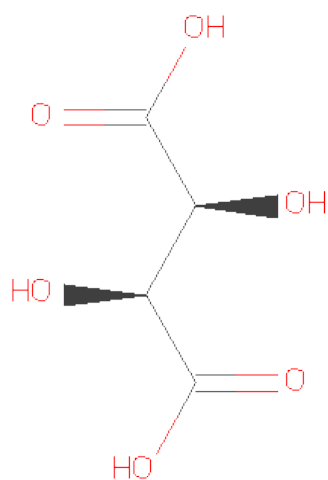
Chain	Residue	Modelled	Actual	Comment	Reference
B	401	HIS	-	EXPRESSION TAG	UNP Q45070
C	1	MET	-	EXPRESSION TAG	UNP Q45070
C	392	LEU	-	EXPRESSION TAG	UNP Q45070
C	393	GLU	-	EXPRESSION TAG	UNP Q45070
C	394	HIS	-	EXPRESSION TAG	UNP Q45070
C	395	HIS	-	EXPRESSION TAG	UNP Q45070
C	396	HIS	-	EXPRESSION TAG	UNP Q45070
C	397	HIS	-	EXPRESSION TAG	UNP Q45070
C	398	HIS	-	EXPRESSION TAG	UNP Q45070
C	399	HIS	-	EXPRESSION TAG	UNP Q45070
C	400	HIS	-	EXPRESSION TAG	UNP Q45070
C	401	HIS	-	EXPRESSION TAG	UNP Q45070
D	1	MET	-	EXPRESSION TAG	UNP Q45070
D	392	LEU	-	EXPRESSION TAG	UNP Q45070
D	393	GLU	-	EXPRESSION TAG	UNP Q45070
D	394	HIS	-	EXPRESSION TAG	UNP Q45070
D	395	HIS	-	EXPRESSION TAG	UNP Q45070
D	396	HIS	-	EXPRESSION TAG	UNP Q45070
D	397	HIS	-	EXPRESSION TAG	UNP Q45070
D	398	HIS	-	EXPRESSION TAG	UNP Q45070
D	399	HIS	-	EXPRESSION TAG	UNP Q45070
D	400	HIS	-	EXPRESSION TAG	UNP Q45070
D	401	HIS	-	EXPRESSION TAG	UNP Q45070

- Molecule 2 is MALONIC ACID (three-letter code: MLA) (formula: C₃H₄O₄).



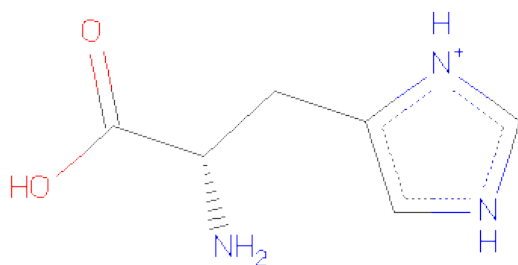
Mol	Chain	Residues	Atoms			ZeroOcc	AltConf
2	A	1	Total	C	O	0	0
			7	3	4		
2	A	1	Total	C	O	0	0
			7	3	4		
2	B	1	Total	C	O	0	0
			7	3	4		
2	C	1	Total	C	O	0	0
			7	3	4		
2	D	1	Total	C	O	0	0
			7	3	4		

- Molecule 3 is D(-)-TARTARIC ACID (three-letter code: TAR) (formula: $C_4H_6O_6$).



Mol	Chain	Residues	Atoms			ZeroOcc	AltConf
3	A	1	Total	C	O	0	0
			10	4	6		

- Molecule 4 is HISTIDINE (three-letter code: HIS) (formula: $C_6H_{10}N_3O_2$).



Mol	Chain	Residues	Atoms				ZeroOcc	AltConf
4	A	1	Total	C	N	O	0	0
			10	6	3	1		
4	A	1	Total	C	N	O	0	1
			17	11	5	1		

- Molecule 5 is SODIUM ION (three-letter code: NA) (formula: Na).

Mol	Chain	Residues	Atoms		ZeroOcc	AltConf
5	B	1	Total	Na	0	0
			1	1		
5	A	1	Total	Na	0	0
			1	1		
5	D	1	Total	Na	0	0
			1	1		
5	C	1	Total	Na	0	0
			1	1		

- Molecule 6 is water.

Mol	Chain	Residues	Atoms		ZeroOcc	AltConf
6	A	629	Total	O	0	0
			629	629		
6	B	582	Total	O	0	0
			582	582		
6	C	561	Total	O	0	0
			561	561		

Continued on next page...

Continued from previous page...

Mol	Chain	Residues	Atoms		ZeroOcc	AltConf
6	D	416	Total 416	O 416	0	0

3 Residue-property plots

These plots are drawn for all protein, RNA and DNA chains in the entry. The first graphic for a chain summarises the proportions of errors displayed in the second graphic. The second graphic shows the sequence view annotated by issues in geometry and electron density. Residues are color-coded according to the number of geometric quality criteria for which they contain at least one outlier: green = 0, yellow = 1, orange = 2 and red = 3 or more. A red dot above a residue indicates a poor fit to the electron density ($RSRZ > 2$). Stretches of 2 or more consecutive residues without any outlier are shown as a green connector. Residues present in the sample, but not in the model, are shown in grey.

- Molecule 1: Glucuronoxylanase xynC

Chain A: 



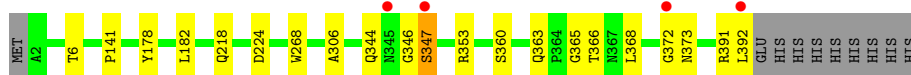
- Molecule 1: Glucuronoxylanase xynC

Chain B: 



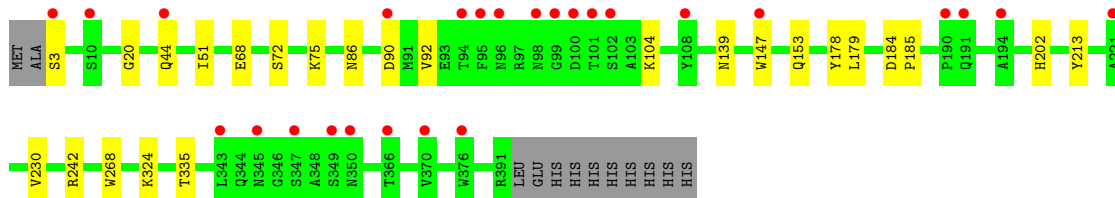
- Molecule 1: Glucuronoxylanase xynC

Chain C: 



- Molecule 1: Glucuronoxylanase xynC

Chain D: 



4 Data and refinement statistics

Property	Value	Source
Space group	P 21 21 2	Depositor
Cell constants a, b, c, α , β , γ	138.49Å 195.80Å 66.25Å 90.00° 90.00° 90.00°	Depositor
Resolution (Å)	50.00 – 1.64 39.97 – 1.64	Depositor EDS
% Data completeness (in resolution range)	99.6 (50.00-1.64) 99.6 (39.97-1.64)	Depositor EDS
R_{merge}	0.12	Depositor
R_{sym}	(Not available)	Depositor
$\langle I/\sigma(I) \rangle$ ¹	1.37 (at 1.64Å)	Xtriage
Refinement program	REFMAC 5.5.0102	Depositor
R, R_{free}	0.167 , 0.201 0.168 , 0.202	Depositor DCC
R_{free} test set	11045 reflections (5.29%)	DCC
Wilson B-factor (Å ²)	18.6	Xtriage
Anisotropy	0.014	Xtriage
Bulk solvent k_{sol} (e/Å ³), B_{sol} (Å ²)	0.35 , 40.5	EDS
Estimated twinning fraction	No twinning to report.	Xtriage
L-test for twinning	$\langle L \rangle = 0.50$, $\langle L^2 \rangle = 0.33$	Xtriage
Outliers	0 of 220015 reflections	Xtriage
F_o, F_c correlation	0.97	EDS
Total number of atoms	15095	wwPDB-VP
Average B, all atoms (Å ²)	21.0	wwPDB-VP

Xtriage's analysis on translational NCS is as follows: *The largest off-origin peak in the Patterson function is 2.64% of the height of the origin peak. No significant pseudotranslation is detected.*

¹Intensities estimated from amplitudes.

5 Model quality ⓘ

5.1 Standard geometry ⓘ

Bond lengths and bond angles in the following residue types are not validated in this section: NA, MLA, TAR

The Z score for a bond length (or angle) is the number of standard deviations the observed value is removed from the expected value. A bond length (or angle) with $|Z| > 5$ is considered an outlier worth inspection. RMSZ is the root-mean-square of all Z scores of the bond lengths (or angles).

Mol	Chain	Bond lengths		Bond angles	
		RMSZ	# $ Z > 5$	RMSZ	# $ Z > 5$
1	A	0.74	2/3376 (0.1%)	0.78	4/4597 (0.1%)
1	B	0.80	3/3330 (0.1%)	0.75	7/4536 (0.2%)
1	C	0.76	0/3357	0.73	0/4573
1	D	0.62	0/3256	0.62	1/4434 (0.0%)
All	All	0.74	5/13319 (0.0%)	0.72	12/18140 (0.1%)

All (5) bond length outliers are listed below:

Mol	Chain	Res	Type	Atoms	Z	Observed(Å)	Ideal(Å)
1	B	45[A]	ASN	CG-ND2	7.43	1.51	1.32
1	B	45[B]	ASN	CG-ND2	7.43	1.51	1.32
1	A	350[A]	ASN	CG-ND2	-5.50	1.19	1.32
1	A	350[B]	ASN	CG-ND2	-5.50	1.19	1.32
1	B	354	TRP	CB-CG	-5.03	1.41	1.50

All (12) bond angle outliers are listed below:

Mol	Chain	Res	Type	Atoms	Z	Observed(°)	Ideal(°)
1	A	350[A]	ASN	CB-CG-ND2	11.26	143.73	116.70
1	A	350[B]	ASN	CB-CG-ND2	11.26	143.73	116.70
1	A	350[A]	ASN	OD1-CG-ND2	-11.22	96.08	121.90
1	A	350[B]	ASN	OD1-CG-ND2	-11.22	96.08	121.90
1	B	242	ARG	NE-CZ-NH2	-7.17	116.71	120.30
1	B	45[A]	ASN	OD1-CG-ND2	6.10	135.93	121.90
1	B	45[B]	ASN	OD1-CG-ND2	6.10	135.93	121.90
1	D	242	ARG	NE-CZ-NH2	-5.68	117.46	120.30
1	B	45[A]	ASN	CB-CG-ND2	-5.58	103.31	116.70
1	B	45[B]	ASN	CB-CG-ND2	-5.58	103.31	116.70
1	B	60	ARG	NE-CZ-NH2	-5.18	117.71	120.30
1	B	242	ARG	NE-CZ-NH1	5.13	122.86	120.30

There are no chirality outliers.

There are no planarity outliers.

5.2 Close contacts ⓘ

In the following table, the Non-H and H(model) columns list the number of non-hydrogen atoms and hydrogen atoms in the chain respectively. The H(added) column lists the number of hydrogens added by MolProbity. The Clashes column lists the number of clashes within the asymmetric unit, and the number in parentheses is this value normalized per 1000 atoms of the molecule in the chain. The Symm-Clashes column gives symmetry related clashes, in the same way as for the Clashes column.

Mol	Chain	Non-H	H(model)	H(added)	Clashes	Symm-Clashes
1	A	3244	0	3121	9	0
1	B	3216	0	3071	10	0
1	C	3222	0	3127	14	0
1	D	3149	0	3012	12	0
2	A	14	0	4	0	0
2	B	7	0	2	0	0
2	C	7	0	2	0	0
2	D	7	0	2	0	0
3	A	10	0	4	0	0
4	A	27	0	20	3	0
5	A	1	0	0	0	0
5	B	1	0	0	0	0
5	C	1	0	0	0	0
5	D	1	0	0	0	0
6	A	629	0	0	6	1
6	B	582	0	0	5	1
6	C	561	0	0	3	0
6	D	416	0	0	4	0
All	All	15095	0	12365	47	1

Clashscore is defined as the number of clashes calculated for the entry per 1000 atoms (including hydrogens) of the entry. The overall clashscore for this entry is 2.

All (47) close contacts within the same asymmetric unit are listed below.

Atom-1	Atom-2	Distance(Å)	Clash(Å)
1:B:366:THR:HB	6:B:1640:HOH:O	1.71	0.89
6:B:1036:HOH:O	1:C:218:GLN:HG3	1.79	0.81
1:C:391:ARG:O	1:C:392:LEU:HB2	1.90	0.71
1:D:68[B]:GLU:OE1	6:D:2053:HOH:O	2.09	0.70
1:C:353[B]:ARG:HD2	1:C:365:GLY:HA3	1.75	0.68

Continued on next page...

Continued from previous page...

Atom-1	Atom-2	Distance(Å)	Clash(Å)
1:D:153[A]:GLN:NE2	6:D:1260:HOH:O	2.25	0.68
1:C:360:SER:HB2	1:C:363[B]:GLN:HG3	1.74	0.67
1:C:141:PRO:HG2	1:C:182:LEU:HD21	1.76	0.66
1:C:344:GLN:HG3	6:C:1678:HOH:O	1.95	0.65
1:D:72:SER:HA	1:D:75[A]:LYS:HE3	1.78	0.65
4:A:405:HIS:N	6:A:1544:HOH:O	2.31	0.63
1:C:346[B]:GLY:O	1:C:347[B]:SER:O	2.19	0.61
1:C:363[A]:GLN:HG3	6:C:1707:HOH:O	2.00	0.60
1:B:332:LYS:HE2	6:C:723:HOH:O	2.02	0.59
1:C:346[B]:GLY:O	1:C:347[B]:SER:C	2.41	0.59
1:C:353[B]:ARG:NH1	1:C:366:THR:HB	2.20	0.56
1:A:393:GLU:HG2	1:A:393:GLU:O	2.04	0.56
1:D:3:SER:N	6:D:2036:HOH:O	2.38	0.55
1:B:15:VAL:HG22	1:B:302[B]:VAL:HG22	1.90	0.54
1:D:92:VAL:HG11	1:D:104:LYS:HE2	1.89	0.54
1:A:396:HIS:HB3	1:B:143:TYR:OH	2.07	0.54
1:B:302[B]:VAL:HG21	6:B:1882:HOH:O	2.09	0.53
1:B:325:VAL:HG23	1:B:392:LEU:HD13	1.90	0.52
1:B:348:ALA:HB1	1:B:389:VAL:HG12	1.91	0.52
4:A:406[B]:HIS:HD2	6:A:1527:HOH:O	1.92	0.52
1:A:278:LYS:NZ	6:A:1714:HOH:O	2.44	0.50
1:C:360:SER:HB2	1:C:363[B]:GLN:CG	2.40	0.50
4:A:406[B]:HIS:CD2	6:A:1527:HOH:O	2.65	0.49
1:D:3:SER:HB3	6:D:1978:HOH:O	2.12	0.48
1:A:191[A]:GLN:NE2	6:A:1921:HOH:O	2.46	0.48
1:D:184:ASP:HB2	1:D:185:PRO:HD3	1.95	0.48
1:A:104:LYS:HE2	6:A:1677:HOH:O	2.17	0.45
1:C:372:GLY:O	1:C:373[B]:ASN:OD1	2.35	0.43
1:A:354:TRP:HB3	1:A:362[A]:LEU:HD22	2.00	0.43
1:D:324:LYS:HB2	1:D:324:LYS:HE2	1.83	0.43
1:B:3:SER:N	6:B:1180:HOH:O	2.51	0.42
1:D:86:ASN:HD21	1:D:147[B]:TRP:HE3	1.66	0.42
1:D:20:GLY:HA3	1:D:51:ILE:O	2.20	0.42
1:C:353[A]:ARG:NH2	1:C:368:LEU:HD11	2.35	0.42
1:A:202:HIS:N	1:A:202:HIS:CD2	2.88	0.42
1:D:86:ASN:ND2	1:D:147[B]:TRP:HE3	2.18	0.41
1:C:6:THR:O	1:C:306:ALA:HA	2.20	0.41
1:D:139:ASN:OD1	1:D:202:HIS:HE1	2.03	0.41
1:A:107:LYS:HB2	1:A:110[A]:LYS:HG2	2.03	0.41
1:A:395:HIS:HB2	1:A:396:HIS:H	1.49	0.40
1:B:367[B]:ASN:ND2	6:B:1766:HOH:O	2.53	0.40
1:B:314:VAL:HA	1:B:330:ILE:O	2.21	0.40

All (1) symmetry-related close contacts are listed below. The label for Atom-2 includes the symmetry operator and encoded unit-cell translations to be applied.

Atom-1	Atom-2	Distance(Å)	Clash(Å)
6:A:578:HOH:O	6:B:1682:HOH:O[1_556]	2.19	0.01

5.3 Torsion angles

5.3.1 Protein backbone ⓘ

In the following table, the Percentiles column shows the percent Ramachandran outliers of the chain as a percentile score with respect to all X-ray entries followed by that with respect to entries of similar resolution. The Analysed column shows the number of residues for which the backbone conformation was analysed, and the total number of residues.

Mol	Chain	Analysed	Favoured	Allowed	Outliers	Percentiles	
1	A	410/401 (102%)	399 (97%)	9 (2%)	2 (0%)	38	13
1	B	404/401 (101%)	393 (97%)	10 (2%)	1 (0%)	56	29
1	C	410/401 (102%)	397 (97%)	10 (2%)	3 (1%)	30	8
1	D	394/401 (98%)	382 (97%)	11 (3%)	1 (0%)	50	24
All	All	1618/1604 (101%)	1571 (97%)	40 (2%)	7 (0%)	43	19

All (7) Ramachandran outliers are listed below:

Mol	Chain	Res	Type
1	C	347[A]	SER
1	C	347[B]	SER
1	A	268	TRP
1	C	268	TRP
1	D	268	TRP
1	B	268	TRP
1	A	396	HIS

5.3.2 Protein sidechains ⓘ

In the following table, the Percentiles column shows the percent sidechain outliers of the chain as a percentile score with respect to all X-ray entries followed by that with respect to entries of similar resolution. The Analysed column shows the number of residues for which the sidechain conformation was analysed, and the total number of residues.

Mol	Chain	Analysed	Rotameric	Outliers	Percentiles	
1	A	352/341 (103%)	346 (98%)	6 (2%)	73	48
1	B	347/341 (102%)	345 (99%)	2 (1%)	92	83
1	C	351/341 (103%)	349 (99%)	2 (1%)	92	83
1	D	337/341 (99%)	330 (98%)	7 (2%)	66	37
All	All	1387/1364 (102%)	1370 (99%)	17 (1%)	82	62

All (17) residues with a non-rotameric sidechain are listed below:

Mol	Chain	Res	Type
1	A	178	TYR
1	A	213	TYR
1	A	347	SER
1	A	362[A]	LEU
1	A	362[B]	LEU
1	A	395	HIS
1	B	44	GLN
1	B	178	TYR
1	C	178	TYR
1	C	224	ASP
1	D	44	GLN
1	D	90	ASP
1	D	178	TYR
1	D	179	LEU
1	D	213	TYR
1	D	230	VAL
1	D	335	THR

Some sidechains can be flipped to improve hydrogen bonding and reduce clashes. All (2) such sidechains are listed below:

Mol	Chain	Res	Type
1	A	313	ASN
1	A	340	ASN

5.3.3 RNA ⓘ

There are no RNA chains in this entry.

5.4 Non-standard residues in protein, DNA, RNA chains ⓘ

There are no non-standard protein/DNA/RNA residues in this entry.

5.5 Carbohydrates ⓘ

There are no carbohydrates in this entry.

5.6 Ligand geometry ⓘ

Of 13 ligands modelled in this entry, 4 are monoatomic - leaving 9 for Mogul analysis.

In the following table, the Counts columns list the number of bonds (or angles) for which Mogul statistics could be retrieved, the number of bonds (or angles) that are observed in the model and the number of bonds (or angles) that are defined in the chemical component dictionary. The Link column lists molecule types, if any, to which the group is linked. The Z score for a bond length (or angle) is the number of standard deviations the observed value is removed from the expected value. A bond length (or angle) with $|Z| > 2$ is considered an outlier worth inspection. RMSZ is the root-mean-square of all Z scores of the bond lengths (or angles).

Mol	Type	Chain	Res	Link	Bond lengths			Bond angles		
					Counts	RMSZ	$\# Z > 2$	Counts	RMSZ	$\# Z > 2$
2	MLA	A	402	-	6,6,6	1.06	0	7,7,7	1.02	0
2	MLA	A	403	-	6,6,6	1.16	0	7,7,7	1.05	1 (14%)
3	TAR	A	404	-	9,9,9	1.14	0	12,12,12	1.20	1 (8%)
4	HIS	A	405	4	10,10,11	6.25	2 (20%)	10,12,14	0.61	0
4	HIS	A	406[A]	-	6,7,11	0.54	0	7,8,14	0.32	0
4	HIS	A	406[B]	-	6,7,11	0.53	0	7,8,14	0.32	0
2	MLA	B	402	-	6,6,6	1.15	0	7,7,7	1.16	0
2	MLA	C	402	-	6,6,6	1.18	0	7,7,7	1.02	0
2	MLA	D	402	-	6,6,6	1.62	2 (33%)	7,7,7	1.27	0

In the following table, the Chirals column lists the number of chiral outliers, the number of chiral centers analysed, the number of these observed in the model and the number defined in the chemical component dictionary. Similar counts are reported in the Torsion and Rings columns. '-' means no outliers of that kind were identified.

Mol	Type	Chain	Res	Link	Chirals	Torsions	Rings
2	MLA	A	402	-	-	0/4/4/4	0/0/0/0
2	MLA	A	403	-	-	0/4/4/4	0/0/0/0
3	TAR	A	404	-	2/2/4/4	0/12/12/12	0/0/0/0
4	HIS	A	405	4	-	0/4/6/8	0/1/1/1
4	HIS	A	406[A]	-	-	0/2/2/8	0/1/1/1

Continued on next page...

Continued from previous page...

Mol	Type	Chain	Res	Link	Chirals	Torsions	Rings
4	HIS	A	406[B]	-	-	0/2/2/8	0/1/1/1
2	MLA	B	402	-	-	0/4/4/4	0/0/0/0
2	MLA	C	402	-	-	0/4/4/4	0/0/0/0
2	MLA	D	402	-	-	0/4/4/4	0/0/0/0

All (4) bond length outliers are listed below:

Mol	Chain	Res	Type	Atoms	Z	Observed(Å)	Ideal(Å)
4	A	405	HIS	O-C	19.49	1.24	1.11
4	A	405	HIS	CA-C	3.01	1.54	1.48
2	D	402	MLA	C2-C3	2.35	1.54	1.51
2	D	402	MLA	C2-C1	2.13	1.54	1.51

All (2) bond angle outliers are listed below:

Mol	Chain	Res	Type	Atoms	Z	Observed(°)	Ideal(°)
3	A	404	TAR	O3-C3-C4	-2.46	105.45	110.73
2	A	403	MLA	C3-C2-C1	-2.01	107.27	112.77

All (2) chirality outliers are listed below:

Mol	Chain	Res	Type	Atom
3	A	404	TAR	C2
3	A	404	TAR	C3

There are no torsion outliers.

There are no ring outliers.

5.7 Other polymers ⓘ

There are no such residues in this entry.

5.8 Polymer linkage issues

There are no chain breaks in this entry.

6 Fit of model and data ⓘ

6.1 Protein, DNA and RNA chains ⓘ

In the following table, the column labelled ‘#RSRZ> 2’ contains the number (and percentage) of RSRZ outliers, followed by percent RSRZ outliers for the chain as percentile scores relative to all X-ray entries and entries of similar resolution. The OWAB column contains the minimum, median, 95th percentile and maximum values of the occupancy-weighted average B-factor per residue. The column labelled ‘Q< 0.9’ lists the number of (and percentage) of residues with an average occupancy less than 0.9.

Mol	Chain	Analysed	<RSRZ>	#RSRZ>2	OWAB(Å ²)	Q<0.9
1	A	397/401 (99%)	-0.31	7 (1%) 65 67	11, 17, 28, 61	3 (0%)
1	B	394/401 (98%)	-0.51	3 (0%) 83 87	10, 15, 25, 40	3 (0%)
1	C	391/401 (97%)	-0.46	4 (1%) 79 83	10, 15, 25, 40	4 (1%)
1	D	389/401 (97%)	0.17	26 (6%) 17 16	15, 25, 41, 52	0
All	All	1571/1604 (97%)	-0.28	40 (2%) 54 55	10, 17, 34, 61	10 (0%)

All (40) RSRZ outliers are listed below:

Mol	Chain	Res	Type	RSRZ
1	A	395	HIS	8.2
1	A	394	HIS	6.9
1	C	392	LEU	6.0
1	A	392	LEU	5.5
1	D	98	ASN	5.4
1	D	99	GLY	4.7
1	D	96	ASN	4.0
1	D	147[A]	TRP	3.8
1	A	393	GLU	3.7
1	A	396	HIS	3.7
1	D	102	SER	3.7
1	A	98[A]	ASN	3.5
1	B	393[A]	GLU	3.3
1	B	394	HIS	3.0
1	D	350	ASN	3.0
1	D	349	SER	2.9
1	D	366	THR	2.9
1	B	392	LEU	2.9
1	C	347[A]	SER	2.8
1	D	101	THR	2.7
1	D	343	LEU	2.6

Continued on next page...

Continued from previous page...

Mol	Chain	Res	Type	RSRZ
1	D	347	SER	2.6
1	D	370	VAL	2.5
1	D	94	THR	2.5
1	D	44	GLN	2.3
1	D	191	GLN	2.3
1	D	90	ASP	2.3
1	C	345	ASN	2.3
1	D	221	ALA	2.3
1	D	345	ASN	2.3
1	D	95	PHE	2.3
1	D	108	TYR	2.3
1	D	100	ASP	2.2
1	D	376	TRP	2.2
1	D	190	PRO	2.2
1	A	346	GLY	2.1
1	C	372	GLY	2.1
1	D	194	ALA	2.1
1	D	3	SER	2.1
1	D	10	SER	2.1

6.2 Non-standard residues in protein, DNA, RNA chains ⓘ

There are no non-standard protein/DNA/RNA residues in this entry.

6.3 Carbohydrates ⓘ

There are no carbohydrates in this entry.

6.4 Ligands ⓘ

In the following table, the Atoms column lists the number of modelled atoms in the group and the number defined in the chemical component dictionary. LLDF column lists the quality of electron density of the group with respect to its neighbouring residues in protein, DNA or RNA chains. The B-factors column lists the minimum, median, 95th percentile and maximum values of B factors of atoms in the group. The column labelled 'Q< 0.9' lists the number of atoms with occupancy less than 0.9.

Mol	Type	Chain	Res	Atoms	RSR	LLDF	B-factors(Å ²)	Q<0.9
4	HIS	A	406[A]	7/11	0.14	10.89	26,29,34,34	7
4	HIS	A	406[B]	7/11	0.14	10.89	26,28,33,34	7

Continued on next page...

Continued from previous page...

Mol	Type	Chain	Res	Atoms	RSR	LLDF	B-factors(\AA^2)	Q<0.9
2	MLA	A	403	7/7	0.11	3.78	21,24,33,37	0
4	HIS	A	405	10/11	0.15	3.53	31,32,35,36	0
2	MLA	A	402	7/7	0.08	2.12	21,23,25,26	0
3	TAR	A	404	10/10	0.07	0.08	19,23,29,30	0
2	MLA	D	402	7/7	0.07	-0.38	23,26,28,30	0
2	MLA	C	402	7/7	0.06	-0.69	20,25,28,28	0
2	MLA	B	402	7/7	0.04	-0.93	17,17,19,20	0
5	NA	C	403	1/1	0.05	-0.94	20,20,20,20	0
5	NA	B	403	1/1	0.05	-1.06	20,20,20,20	0
5	NA	D	403	1/1	0.07	-1.76	34,34,34,34	0
5	NA	A	407	1/1	0.04	-6.36	18,18,18,18	0

6.5 Other polymers ⓘ

There are no such residues in this entry.