



Full wwPDB X-ray Structure Validation Report

Feb 28, 2014 – 12:18 AM GMT

PDB ID : 4KM2
Title : Crystal structure of Dihydrofolate reductase from Mycobacterium tuberculosis
in an open conformation in complex with trimethoprim
Authors : Dias, M.V.B; Tyrakis, P.; Blundell, T.L.
Deposited on : 2013-05-07
Resolution : 1.40 Å(reported)

This is a full wwPDB validation report for a publicly released PDB entry.
We welcome your comments at validation@mail.wwpdb.org
A user guide is available at <http://wwpdb.org/ValidationPDFNotes.html>

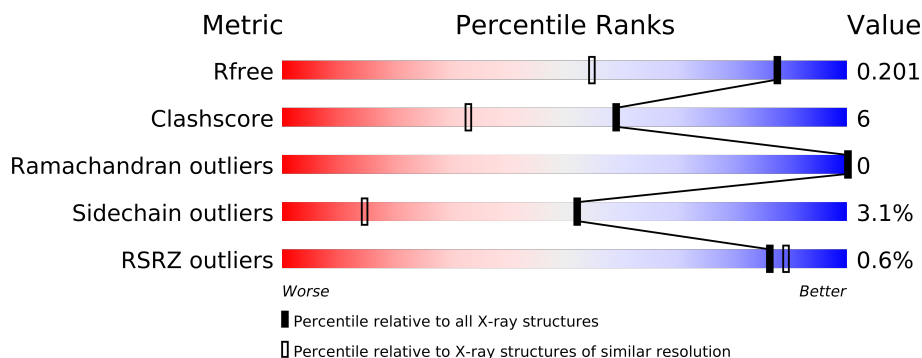
The following versions of software and data (see [references](#)) were used in the production of this report:

MolProbity : 4.02b-467
Mogul : 1.15 2013
Xtriage (Phenix) : dev-1323
EDS : stable22639
Percentile statistics : 21963
Refmac : 5.8.0049
CCP4 : 6.3.0 (Settle)
Ideal geometry (proteins) : Engh & Huber (2001)
Ideal geometry (DNA, RNA) : Parkinson et. al. (1996)
Validation Pipeline (wwPDB-VP) : stable22683

1 Overall quality at a glance


The reported resolution of this entry is 1.40 Å.

Percentile scores (ranging between 0-100) for global validation metrics of the entry are shown in the following graphic. The table shows the number of entries on which the scores are based.



Metric	Whole archive (#Entries)	Similar resolution (#Entries, resolution range(Å))
R_{free}	66092	1097 (1.42-1.38)
Clashscore	79885	1246 (1.42-1.38)
Ramachandran outliers	78287	1206 (1.42-1.38)
Sidechain outliers	78261	1205 (1.42-1.38)
RSRZ outliers	66119	1097 (1.42-1.38)

The table below summarises the geometric issues observed across the polymeric chains and their fit to the electron density. The red, orange, yellow and green segments on the lower bar indicate the fraction of residues that contain outliers for ≥ 3 , 2, 1 and 0 types of geometric quality criteria. The upper red bar (where present) indicates the fraction of residues that have poor fit to the electron density.

Mol	Chain	Length	Quality of chain
1	A	179	
1	B	179	

2 Entry composition

There are 4 unique types of molecules in this entry. The entry contains 3242 atoms, of which 0 are hydrogen and 0 are deuterium.

In the tables below, the ZeroOcc column contains the number of atoms modelled with zero occupancy, the AltConf column contains the number of residues with at least one atom in alternate conformation and the Trace column contains the number of residues modelled with at most 2 atoms.

- Molecule 1 is a protein called Dihydrofolate reductase.

Mol	Chain	Residues	Atoms					ZeroOcc	AltConf	Trace
1	A	159	Total	C	N	O	S	0	3	0
			1264	800	230	229	5			
1	B	159	Total	C	N	O	S	0	4	0
			1265	802	229	229	5			

There are 40 discrepancies between the modelled and reference sequences:

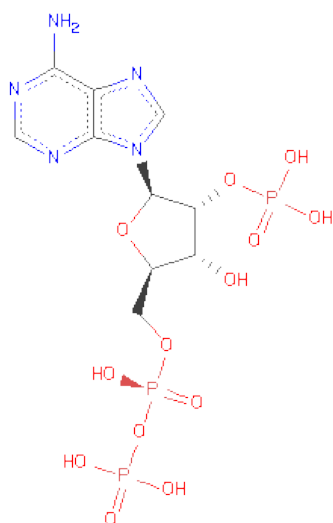
Chain	Residue	Modelled	Actual	Comment	Reference
A	-19	MET	-	EXPRESSION TAG	UNP P0A546
A	-18	GLY	-	EXPRESSION TAG	UNP P0A546
A	-17	SER	-	EXPRESSION TAG	UNP P0A546
A	-16	SER	-	EXPRESSION TAG	UNP P0A546
A	-15	HIS	-	EXPRESSION TAG	UNP P0A546
A	-14	HIS	-	EXPRESSION TAG	UNP P0A546
A	-13	HIS	-	EXPRESSION TAG	UNP P0A546
A	-12	HIS	-	EXPRESSION TAG	UNP P0A546
A	-11	HIS	-	EXPRESSION TAG	UNP P0A546
A	-10	HIS	-	EXPRESSION TAG	UNP P0A546
A	-9	SER	-	EXPRESSION TAG	UNP P0A546
A	-8	SER	-	EXPRESSION TAG	UNP P0A546
A	-7	GLY	-	EXPRESSION TAG	UNP P0A546
A	-6	LEU	-	EXPRESSION TAG	UNP P0A546
A	-5	VAL	-	EXPRESSION TAG	UNP P0A546
A	-4	PRO	-	EXPRESSION TAG	UNP P0A546
A	-3	ARG	-	EXPRESSION TAG	UNP P0A546
A	-2	GLY	-	EXPRESSION TAG	UNP P0A546
A	-1	SER	-	EXPRESSION TAG	UNP P0A546
A	0	HIS	-	EXPRESSION TAG	UNP P0A546
B	-19	MET	-	EXPRESSION TAG	UNP P0A546
B	-18	GLY	-	EXPRESSION TAG	UNP P0A546
B	-17	SER	-	EXPRESSION TAG	UNP P0A546
B	-16	SER	-	EXPRESSION TAG	UNP P0A546
B	-15	HIS	-	EXPRESSION TAG	UNP P0A546

Continued on next page...

Continued from previous page...

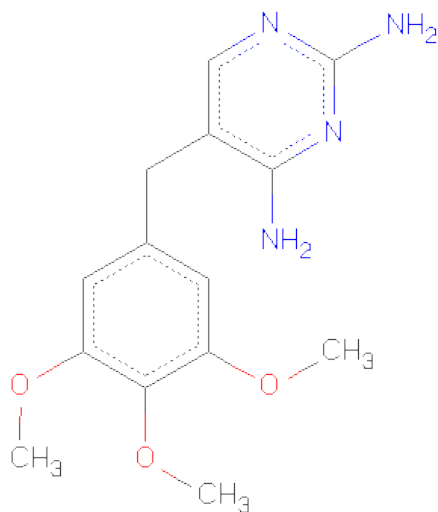
Chain	Residue	Modelled	Actual	Comment	Reference
B	-14	HIS	-	EXPRESSION TAG	UNP P0A546
B	-13	HIS	-	EXPRESSION TAG	UNP P0A546
B	-12	HIS	-	EXPRESSION TAG	UNP P0A546
B	-11	HIS	-	EXPRESSION TAG	UNP P0A546
B	-10	HIS	-	EXPRESSION TAG	UNP P0A546
B	-9	SER	-	EXPRESSION TAG	UNP P0A546
B	-8	SER	-	EXPRESSION TAG	UNP P0A546
B	-7	GLY	-	EXPRESSION TAG	UNP P0A546
B	-6	LEU	-	EXPRESSION TAG	UNP P0A546
B	-5	VAL	-	EXPRESSION TAG	UNP P0A546
B	-4	PRO	-	EXPRESSION TAG	UNP P0A546
B	-3	ARG	-	EXPRESSION TAG	UNP P0A546
B	-2	GLY	-	EXPRESSION TAG	UNP P0A546
B	-1	SER	-	EXPRESSION TAG	UNP P0A546
B	0	HIS	-	EXPRESSION TAG	UNP P0A546

- Molecule 2 is 2'-MONOPHOSPHOADENOSINE-5'-DIPHOSPHATE (three-letter code: ATR) (formula: C₁₀H₁₆N₅O₁₃P₃).



Mol	Chain	Residues	Atoms					ZeroOcc	AltConf
2	A	1	Total	C	N	O	P	0	0
			31	10	5	13	3		
2	B	1	Total	C	N	O	P	0	0
			31	10	5	13	3		

- Molecule 3 is TRIMETHOPRIM (three-letter code: TOP) (formula: C₁₄H₁₈N₄O₃).



Mol	Chain	Residues	Atoms				ZeroOcc	AltConf
3	A	1	Total	C	N	O	0	0
			21	14	4	3		
3	B	1	Total	C	N	O	0	0
			21	14	4	3		

- Molecule 4 is water.

Mol	Chain	Residues	Atoms		ZeroOcc	AltConf
4	A	282	Total	O	0	0
			282	282		
4	B	327	Total	O	0	0
			327	327		

3 Residue-property plots

These plots are drawn for all protein, RNA and DNA chains in the entry. The first graphic for a chain summarises the proportions of errors displayed in the second graphic. The second graphic shows the sequence view annotated by issues in geometry and electron density. Residues are color-coded according to the number of geometric quality criteria for which they contain at least one outlier: green = 0, yellow = 1, orange = 2 and red = 3 or more. A red dot above a residue indicates a poor fit to the electron density ($RSRZ > 2$). Stretches of 2 or more consecutive residues without any outlier are shown as a green connector. Residues present in the sample, but not in the model, are shown in grey.

- Molecule 1: Dihydrofolate reductase

Chain A: 



- Molecule 1: Dihydrofolate reductase

Chain B: 



4 Data and refinement statistics

Property	Value	Source
Space group	P 21 21 21	Depositor
Cell constants a, b, c, α , β , γ	64.16Å 65.28Å 79.75Å 90.00° 90.00° 90.00°	Depositor
Resolution (Å)	20.99 – 1.40 20.99 – 1.40	Depositor EDS
% Data completeness (in resolution range)	98.8 (20.99-1.40) 98.8 (20.99-1.40)	Depositor EDS
R_{merge}	(Not available)	Depositor
R_{sym}	0.10	Depositor
$\langle I/\sigma(I) \rangle$ ¹	2.77 (at 1.40Å)	Xtriage
Refinement program	REFMAC 5.6.0117	Depositor
R, R_{free}	0.141 , 0.201 0.141 , 0.201	Depositor DCC
R_{free} test set	3336 reflections (5.34%)	DCC
Wilson B-factor (Å ²)	10.7	Xtriage
Anisotropy	0.131	Xtriage
Bulk solvent k_{sol} (e/Å ³), B_{sol} (Å ²)	0.34 , 33.3	EDS
Estimated twinning fraction	0.000 for k,h,-l	Xtriage
L-test for twinning	$\langle L \rangle = 0.49$, $\langle L^2 \rangle = 0.32$	Xtriage
Outliers	0 of 65799 reflections	Xtriage
F_o, F_c correlation	0.97	EDS
Total number of atoms	3242	wwPDB-VP
Average B, all atoms (Å ²)	16.0	wwPDB-VP

Xtriage's analysis on translational NCS is as follows: *The analyses of the Patterson function reveals a significant off-origin peak that is 42.73 % of the origin peak, indicating pseudo translational symmetry. The chance of finding a peak of this or larger height randomly in a structure without pseudo translational symmetry is equal to 1.9550e-04. The detected translational NCS is most likely also responsible for the elevated intensity ratio.*

¹Intensities estimated from amplitudes.

5 Model quality ⓘ

5.1 Standard geometry ⓘ

Bond lengths and bond angles in the following residue types are not validated in this section: TOP, ATR

The Z score for a bond length (or angle) is the number of standard deviations the observed value is removed from the expected value. A bond length (or angle) with $|Z| > 5$ is considered an outlier worth inspection. RMSZ is the root-mean-square of all Z scores of the bond lengths (or angles).

Mol	Chain	Bond lengths		Bond angles	
		RMSZ	$\# Z > 5$	RMSZ	$\# Z > 5$
1	A	1.26	3/1307 (0.2%)	1.23	14/1773 (0.8%)
1	B	1.23	1/1308 (0.1%)	1.24	9/1778 (0.5%)
All	All	1.24	4/2615 (0.2%)	1.24	23/3551 (0.6%)

All (4) bond length outliers are listed below:

Mol	Chain	Res	Type	Atoms	Z	Observed(Å)	Ideal(Å)
1	A	135	TRP	CD2-CE2	6.62	1.49	1.41
1	B	26	GLU	CD-OE2	6.44	1.32	1.25
1	A	47	TRP	CD2-CE2	5.91	1.48	1.41
1	A	16	ARG	CZ-NH1	5.05	1.39	1.33

All (23) bond angle outliers are listed below:

Mol	Chain	Res	Type	Atoms	Z	Observed(°)	Ideal(°)
1	A	100	TYR	CB-CG-CD2	8.40	126.04	121.00
1	B	136	ARG	NE-CZ-NH2	8.29	124.44	120.30
1	A	136	ARG	NE-CZ-NH1	8.28	124.44	120.30
1	A	143	ARG	NE-CZ-NH2	-7.95	116.32	120.30
1	B	102[A]	LEU	CA-CB-CG	6.94	131.26	115.30
1	B	102[B]	LEU	CA-CB-CG	6.94	131.26	115.30
1	B	4	LEU	CB-CG-CD1	6.89	122.71	111.00
1	A	100	TYR	CB-CG-CD1	-6.82	116.91	121.00
1	A	53[A]	LYS	CD-CE-NZ	6.81	127.36	111.70
1	A	53[B]	LYS	CD-CE-NZ	6.81	127.36	111.70
1	A	53[C]	LYS	CD-CE-NZ	6.81	127.36	111.70
1	B	26	GLU	OE1-CD-OE2	5.83	130.29	123.30
1	A	136	ARG	NE-CZ-NH2	-5.59	117.51	120.30
1	A	67	ARG	NE-CZ-NH1	-5.43	117.58	120.30
1	B	146	ARG	CG-CD-NE	5.42	123.19	111.80

Continued on next page...

Continued from previous page...

Mol	Chain	Res	Type	Atoms	Z	Observed(°)	Ideal(°)
1	B	143	ARG	NE-CZ-NH1	-5.36	117.62	120.30
1	A	4[A]	LEU	CB-CG-CD1	5.35	120.10	111.00
1	A	4[B]	LEU	CB-CG-CD1	5.35	120.10	111.00
1	B	87	THR	N-CA-CB	-5.28	100.26	110.30
1	A	72	MET	CB-CG-SD	5.25	128.15	112.40
1	A	146	ARG	NE-CZ-NH2	-5.08	117.76	120.30
1	A	16	ARG	NE-CZ-NH2	-5.04	117.78	120.30
1	B	32	ARG	CG-CD-NE	-5.03	101.23	111.80

There are no chirality outliers.

There are no planarity outliers.

5.2 Close contacts ⓘ

In the following table, the Non-H and H(model) columns list the number of non-hydrogen atoms and hydrogen atoms in the chain respectively. The H(added) column lists the number of hydrogens added by MolProbity. The Clashes column lists the number of clashes within the asymmetric unit, and the number in parentheses is this value normalized per 1000 atoms of the molecule in the chain. The Symm-Clashes column gives symmetry related clashes, in the same way as for the Clashes column.

Mol	Chain	Non-H	H(model)	H(added)	Clashes	Symm-Clashes
1	A	1264	0	0	8	2
1	B	1265	0	0	8	4
2	A	31	0	0	0	0
2	B	31	0	0	0	0
3	A	21	0	0	0	0
3	B	21	0	0	0	1
4	A	282	0	0	6	6
4	B	327	0	0	6	2
All	All	3242	0	0	16	8

Clashscore is defined as the number of clashes calculated for the entry per 1000 atoms (including hydrogens) of the entry. The overall clashscore for this entry is 6.

All (16) close contacts within the same asymmetric unit are listed below.

Atom-1	Atom-2	Distance(Å)	Clash(Å)
1:A:141:GLU:CG	4:A:348:HOH:O	2.36	0.74
1:A:30:HIS:CD2	4:A:484:HOH:O	2.47	0.68
1:A:1:MET:N	4:A:527:HOH:O	2.28	0.66
1:B:87:THR:CG2	4:B:561:HOH:O	2.45	0.63

Continued on next page...

Continued from previous page...

Atom-1	Atom-2	Distance(Å)	Clash(Å)
1:A:84:GLU:OE1	4:A:556:HOH:O	2.16	0.61
1:B:138:GLU:OE2	1:B:157:HIS:CE1	2.53	0.61
1:B:146:ARG:NH1	4:B:507:HOH:O	2.36	0.57
1:B:23:ARG:CG	1:B:23:ARG:NH1	2.69	0.55
1:B:30:HIS:CD2	4:B:542:HOH:O	2.61	0.54
1:B:68[B]:GLN:NE2	4:B:403:HOH:O	2.42	0.51
1:A:4[B]:LEU:CD1	1:A:107:ALA:CB	2.89	0.51
1:A:87:THR:CG2	4:A:556:HOH:O	2.66	0.43
1:B:68[A]:GLN:CD	4:B:395:HOH:O	2.58	0.42
1:A:157:HIS:CE1	4:A:574:HOH:O	2.73	0.41
1:B:30:HIS:CE1	4:B:512:HOH:O	2.74	0.41

All (8) symmetry-related close contacts are listed below. The label for Atom-2 includes the symmetry operator and encoded unit-cell translations to be applied.

Atom-1	Atom-2	Distance(Å)	Clash(Å)
4:A:573:HOH:O	4:B:606:HOH:O[3_645]	1.04	1.16
3:B:202:TOP:C17	4:A:490:HOH:O[3_655]	1.19	1.01
4:A:578:HOH:O	4:B:610:HOH:O[3_645]	1.69	0.51
4:A:541:HOH:O	4:A:556:HOH:O[2_555]	1.99	0.21
1:A:156:TYR:OH	1:B:53:LYS:NZ[3_645]	2.01	0.19
1:B:23:ARG:NE	4:A:344:HOH:O[3_655]	2.06	0.14
1:B:23:ARG:NH1	4:A:473:HOH:O[3_655]	2.15	0.05
1:A:156:TYR:CE1	1:B:53:LYS:NZ[3_645]	2.18	0.02

5.3 Torsion angles

5.3.1 Protein backbone ⓘ

In the following table, the Percentiles column shows the percent Ramachandran outliers of the chain as a percentile score with respect to all X-ray entries followed by that with respect to entries of similar resolution. The Analysed column shows the number of residues for which the backbone conformation was analysed, and the total number of residues.

Mol	Chain	Analysed	Favoured	Allowed	Outliers	Percentiles	
1	A	161/179 (90%)	160 (99%)	1 (1%)	0	100	100
1	B	161/179 (90%)	160 (99%)	1 (1%)	0	100	100
All	All	322/358 (90%)	320 (99%)	2 (1%)	0	100	100

There are no Ramachandran outliers to report.

5.3.2 Protein sidechains ⓘ

In the following table, the Percentiles column shows the percent sidechain outliers of the chain as a percentile score with respect to all X-ray entries followed by that with respect to entries of similar resolution. The Analysed column shows the number of residues for which the sidechain conformation was analysed, and the total number of residues.

Mol	Chain	Analysed	Rotameric	Outliers	Percentiles	
1	A	131/144 (91%)	126 (96%)	5 (4%)	44	9
1	B	131/144 (91%)	126 (96%)	5 (4%)	44	9
All	All	262/288 (91%)	252 (96%)	10 (4%)	52	9

All (10) residues with a non-rotameric sidechain are listed below:

Mol	Chain	Res	Type
1	A	53[A]	LYS
1	A	53[B]	LYS
1	A	53[C]	LYS
1	A	54	VAL
1	A	82	LEU
1	B	4	LEU
1	B	23	ARG
1	B	53	LYS
1	B	83	GLU
1	B	87	THR

Some sidechains can be flipped to improve hydrogen bonding and reduce clashes. There are no such sidechains identified.

5.3.3 RNA ⓘ

There are no RNA chains in this entry.

5.4 Non-standard residues in protein, DNA, RNA chains ⓘ

There are no non-standard protein/DNA/RNA residues in this entry.

5.5 Carbohydrates ⓘ

There are no carbohydrates in this entry.

5.6 Ligand geometry

4 ligands are modelled in this entry.

In the following table, the Counts columns list the number of bonds (or angles) for which Mogul statistics could be retrieved, the number of bonds (or angles) that are observed in the model and the number of bonds (or angles) that are defined in the chemical component dictionary. The Link column lists molecule types, if any, to which the group is linked. The Z score for a bond length (or angle) is the number of standard deviations the observed value is removed from the expected value. A bond length (or angle) with $|Z| > 2$ is considered an outlier worth inspection. RMSZ is the root-mean-square of all Z scores of the bond lengths (or angles).

Mol	Type	Chain	Res	Link	Bond lengths			Bond angles		
					Counts	RMSZ	# $ Z > 2$	Counts	RMSZ	# $ Z > 2$
2	ATR	A	201	-	33,33,33	1.18	3 (9%)	52,52,52	1.59	14 (26%)
3	TOP	A	202	-	22,22,22	1.06	2 (9%)	30,30,30	1.80	7 (23%)
2	ATR	B	201	-	33,33,33	1.21	2 (6%)	52,52,52	2.08	10 (19%)
3	TOP	B	202	-	22,22,22	1.18	3 (13%)	30,30,30	1.76	8 (26%)

In the following table, the Chirals column lists the number of chiral outliers, the number of chiral centers analysed, the number of these observed in the model and the number defined in the chemical component dictionary. Similar counts are reported in the Torsion and Rings columns. '-' means no outliers of that kind were identified.

Mol	Type	Chain	Res	Link	Chirals	Torsions	Rings
2	ATR	A	201	-	-	0/21/37/37	0/1/3/3
3	TOP	A	202	-	-	0/10/10/10	0/2/2/2
2	ATR	B	201	-	-	0/21/37/37	0/1/3/3
3	TOP	B	202	-	-	0/10/10/10	0/2/2/2

All (10) bond length outliers are listed below:

Mol	Chain	Res	Type	Atoms	Z	Observed(Å)	Ideal(Å)
2	B	201	ATR	O4'-C1'	3.16	1.46	1.41
2	A	201	ATR	PB-O3A	2.90	1.65	1.60
3	B	202	TOP	C6-N5	2.58	1.39	1.35
2	A	201	ATR	C4-N3	-2.52	1.31	1.35
2	A	201	ATR	C5-C4	2.45	1.46	1.40
3	B	202	TOP	C18-C15	-2.37	1.35	1.40
3	B	202	TOP	C21-C10	2.28	1.43	1.39
3	A	202	TOP	C21-C10	2.21	1.43	1.39
2	B	201	ATR	C8-N9	2.04	1.39	1.36
3	A	202	TOP	C1-N2	2.03	1.39	1.34

All (39) bond angle outliers are listed below:

Mol	Chain	Res	Type	Atoms	Z	Observed(°)	Ideal(°)
2	B	201	ATR	N3-C2-N1	-9.58	120.70	128.71
3	B	202	TOP	C1-N2-C3	4.53	121.60	115.90
2	B	201	ATR	C8-N9-C4	4.36	110.23	106.90
2	B	201	ATR	C4-C5-N7	-4.16	105.95	109.52
2	B	201	ATR	C2-N1-C6	4.13	126.23	118.77
2	A	201	ATR	C4-C5-N7	-3.91	106.18	109.52
3	A	202	TOP	O16-C15-C12	3.71	125.44	120.13
3	B	202	TOP	C20-O19-C18	3.63	122.95	117.59
2	B	201	ATR	O4'-C1'-N9	-3.59	105.10	108.44
3	A	202	TOP	O16-C15-C18	-3.53	115.07	120.13
2	A	201	ATR	O3B-PB-O1B	-3.22	99.92	110.44
2	A	201	ATR	N3-C2-N1	-3.14	126.08	128.71
2	B	201	ATR	N3-C4-N9	3.01	130.87	125.43
3	B	202	TOP	C1-C8-C6	2.80	119.63	115.69
3	A	202	TOP	C9-C8-C1	-2.78	118.18	121.82
3	B	202	TOP	C9-C8-C6	-2.78	118.73	122.17
2	A	201	ATR	O2B-PB-O1B	2.77	119.50	110.44
3	B	202	TOP	C8-C1-N2	-2.75	118.89	123.86
3	A	202	TOP	C9-C10-C11	-2.75	114.80	120.67
2	A	201	ATR	C1'-N9-C4	-2.67	122.03	126.64
3	B	202	TOP	C21-C18-C15	2.64	123.41	120.22
2	A	201	ATR	N3-C4-N9	2.51	129.97	125.43
2	B	201	ATR	N7-C8-N9	-2.47	107.37	114.36
2	B	201	ATR	C1'-N9-C4	-2.46	122.39	126.64
2	A	201	ATR	O3B-PB-O2B	2.45	117.16	107.61
2	A	201	ATR	C4'-O4'-C1'	-2.44	107.10	109.75
3	A	202	TOP	N2-C3-N5	-2.40	123.36	125.85
2	A	201	ATR	O2B-PB-O3A	2.37	116.39	105.14
2	B	201	ATR	C8-N7-C5	2.36	110.91	103.58
3	A	202	TOP	C1-N2-C3	2.30	118.79	115.90
2	A	201	ATR	C3'-C2'-C1'	-2.30	98.26	102.73
2	A	201	ATR	C8-N9-C1'	2.27	130.86	126.38
3	B	202	TOP	C8-C6-N7	2.27	125.62	122.23
3	A	202	TOP	O13-C12-C15	-2.22	111.45	115.31
2	A	201	ATR	O3B-PB-O3A	-2.14	94.99	105.14
2	B	201	ATR	O3'-C3'-C2'	2.11	117.39	111.20
3	B	202	TOP	N2-C3-N5	-2.08	123.69	125.85
2	A	201	ATR	O2A-PA-O3A	2.05	114.88	105.14
2	A	201	ATR	O4'-C1'-C2'	2.01	108.83	106.95

There are no chirality outliers.

There are no torsion outliers.

There are no ring outliers.

5.7 Other polymers ⓘ

There are no such residues in this entry.

5.8 Polymer linkage issues

There are no chain breaks in this entry.

6 Fit of model and data

6.1 Protein, DNA and RNA chains

In the following table, the column labelled ‘#RSRZ> 2’ contains the number (and percentage) of RSRZ outliers, followed by percent RSRZ outliers for the chain as percentile scores relative to all X-ray entries and entries of similar resolution. The OWAB column contains the minimum, median, 95th percentile and maximum values of the occupancy-weighted average B-factor per residue. The column labelled ‘Q< 0.9’ lists the number of (and percentage) of residues with an average occupancy less than 0.9.

Mol	Chain	Analysed	<RSRZ>	#RSRZ>2	OWAB(Å ²)	Q<0.9
1	A	159/179 (88%)	-0.58	1 (0%) 86 89	7, 12, 26, 39	0
1	B	159/179 (88%)	-0.63	1 (0%) 86 89	5, 11, 26, 34	1 (0%)
All	All	318/358 (88%)	-0.61	2 (0%) 86 89	5, 11, 26, 39	1 (0%)

All (2) RSRZ outliers are listed below:

Mol	Chain	Res	Type	RSRZ
1	B	1	MET	3.1
1	A	53[A]	LYS	2.3

6.2 Non-standard residues in protein, DNA, RNA chains

There are no non-standard protein/DNA/RNA residues in this entry.

6.3 Carbohydrates

There are no carbohydrates in this entry.

6.4 Ligands

In the following table, the Atoms column lists the number of modelled atoms in the group and the number defined in the chemical component dictionary. LLDF column lists the quality of electron density of the group with respect to its neighbouring residues in protein, DNA or RNA chains. The B-factors column lists the minimum, median, 95th percentile and maximum values of B factors of atoms in the group. The column labelled ‘Q< 0.9’ lists the number of atoms with occupancy less than 0.9.

Mol	Type	Chain	Res	Atoms	RSR	LLDF	B-factors(Å ²)	Q<0.9
3	TOP	B	202	21/21	0.06	0.30	5,6,10,16	0

Continued on next page...

Continued from previous page...

Mol	Type	Chain	Res	Atoms	RSR	LLDF	B-factors(\AA^2)	Q<0.9
3	TOP	A	202	21/21	0.06	0.10	6,8,9,11	0
2	ATR	A	201	31/31	0.04	-0.77	9,13,27,33	0
2	ATR	B	201	31/31	0.04	-1.15	6,8,13,20	0

6.5 Other polymers ⓘ

There are no such residues in this entry.