



# Full wwPDB X-ray Structure Validation Report ⓘ

Feb 28, 2014 – 11:21 AM GMT

PDB ID : 1KPM  
Title : First Structural Evidence of a Specific Inhibition of Phospholipase A2 by Vitamin E and its Implications in Inflammation: Crystal Structure of the Complex Formed between Phospholipase A2 and Vitamin E at 1.8 Å Resolution.  
Authors : Chandra, V.; Jasti, J.; Kaur, P.; Betzel, C.; Srinivasan, A.; Singh, T.P.  
Deposited on : 2002-01-01  
Resolution : 1.80 Å(reported)

This is a full wwPDB validation report for a publicly released PDB entry.  
We welcome your comments at [validation@mail.wwpdb.org](mailto:validation@mail.wwpdb.org)  
A user guide is available at <http://wwpdb.org/ValidationPDFNotes.html>

---

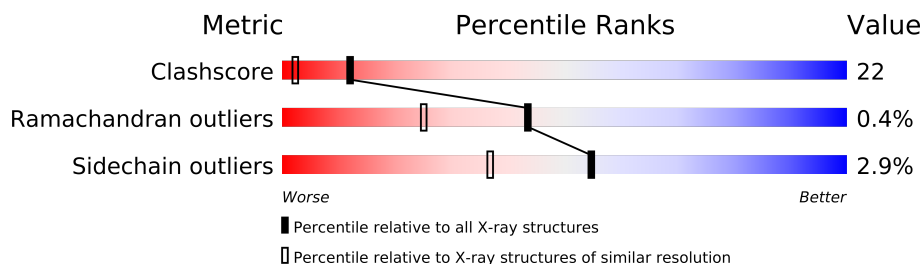
The following versions of software and data (see [references](#)) were used in the production of this report:

MolProbity : 4.02b-467  
Mogul : 1.15 2013  
Xtriage (Phenix) : NOT EXECUTED  
EDS : NOT EXECUTED  
Percentile statistics : 21963  
Ideal geometry (proteins) : Engh & Huber (2001)  
Ideal geometry (DNA, RNA) : Parkinson et. al. (1996)  
Validation Pipeline (wwPDB-VP) : stable22683

# 1 Overall quality at a glance

The reported resolution of this entry is 1.80 Å.

Percentile scores (ranging between 0-100) for global validation metrics of the entry are shown in the following graphic. The table shows the number of entries on which the scores are based.



Metric	Whole archive (#Entries)	Similar resolution (#Entries, resolution range(Å))
Clashscore	79885	4461 (1.80-1.80)
Ramachandran outliers	78287	4404 (1.80-1.80)
Sidechain outliers	78261	4403 (1.80-1.80)

The table below summarises the geometric issues observed across the polymeric chains and their fit to the electron density. The red, orange, yellow and green segments on the lower bar indicate the fraction of residues that contain outliers for  $\geq 3$ , 2, 1 and 0 types of geometric quality criteria. The upper red bar (where present) indicates the fraction of residues that have poor fit to the electron density.

Note EDS was not executed.

Mol	Chain	Length	Quality of chain
1	A	121	
1	B	121	

## 2 Entry composition i

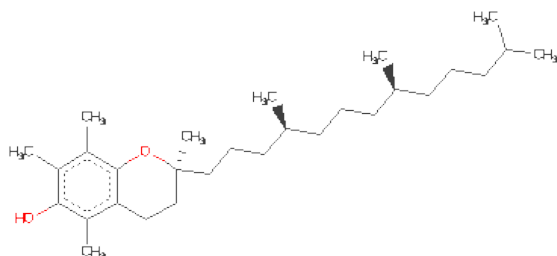
There are 4 unique types of molecules in this entry. The entry contains 2241 atoms, of which 0 are hydrogen and 0 are deuterium.

In the tables below, the ZeroOcc column contains the number of atoms modelled with zero occupancy, the AltConf column contains the number of residues with at least one atom in alternate conformation and the Trace column contains the number of residues modelled with at most 2 atoms.

- Molecule 1 is a protein called Phospholipase A2.

Mol	Chain	Residues	Atoms					ZeroOcc	AltConf	Trace
1	A	121	Total	C	N	O	S	0	0	0
			944	591	159	178	16			
1	B	121	Total	C	N	O	S	0	0	0
			944	591	159	178	16			

- Molecule 2 is VITAMIN E (three-letter code: VIT) (formula:  $C_{29}H_{50}O_2$ ).



Mol	Chain	Residues	Atoms			ZeroOcc	AltConf
2	A	1	Total	C	O	0	0
			31	29	2		

- Molecule 3 is ACETIC ACID (three-letter code: ACY) (formula:  $C_2H_4O_2$ ).



Mol	Chain	Residues	Atoms			ZeroOcc	AltConf
3	B	1	Total	C	O	0	0
			4	2	2		
3	B	1	Total	C	O	0	0
			4	2	2		
3	B	1	Total	C	O	0	0
			4	2	2		
3	A	1	Total	C	O	0	0
			4	2	2		

- Molecule 4 is water.

Mol	Chain	Residues	Atoms		ZeroOcc	AltConf
4	A	143	Total	O	0	0
			143	143		
4	B	163	Total	O	0	0
			163	163		

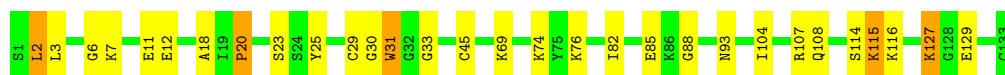
### 3 Residue-property plots

These plots are drawn for all protein, RNA and DNA chains in the entry. The first graphic for a chain summarises the proportions of errors displayed in the second graphic. The second graphic shows the sequence view annotated by issues in geometry and electron density. Residues are color-coded according to the number of geometric quality criteria for which they contain at least one outlier: green = 0, yellow = 1, orange = 2 and red = 3 or more. A red dot above a residue indicates a poor fit to the electron density ( $RSRZ > 2$ ). Stretches of 2 or more consecutive residues without any outlier are shown as a green connector. Residues present in the sample, but not in the model, are shown in grey.

Note EDS was not executed.

- Molecule 1: Phospholipase A2

Chain A: 



- Molecule 1: Phospholipase A2

Chain B: 



## 4 Data and refinement statistics

Xtriage (Phenix) and EDS were not executed - this section will therefore be incomplete.

Property	Value	Source
Space group	C 2 2 21	Depositor
Cell constants a, b, c, $\alpha$ , $\beta$ , $\gamma$	75.79Å 88.51Å 78.04Å 90.00° 90.00° 90.00°	Depositor
Resolution (Å)	20.00 – 1.80	Depositor
% Data completeness (in resolution range)	95.8 (20.00-1.80)	Depositor
$R_{merge}$	0.04	Depositor
$R_{sym}$	0.04	Depositor
Refinement program	CNS 0.9	Depositor
R, $R_{free}$	0.197 , 0.228	Depositor
Estimated twinning fraction	No twinning to report.	Xtriage
Total number of atoms	2241	wwPDB-VP
Average B, all atoms (Å <sup>2</sup> )	29.0	wwPDB-VP

## 5 Model quality

### 5.1 Standard geometry

Bond lengths and bond angles in the following residue types are not validated in this section: ACY, VIT

The Z score for a bond length (or angle) is the number of standard deviations the observed value is removed from the expected value. A bond length (or angle) with  $|Z| > 5$  is considered an outlier worth inspection. RMSZ is the root-mean-square of all Z scores of the bond lengths (or angles).

Mol	Chain	Bond lengths		Bond angles	
		RMSZ	$\# Z  > 5$	RMSZ	$\# Z  > 5$
1	A	0.75	5/964 (0.5%)	1.08	5/1292 (0.4%)
1	B	0.31	0/964	0.57	0/1292
All	All	0.58	5/1928 (0.3%)	0.86	5/2584 (0.2%)

All (5) bond length outliers are listed below:

Mol	Chain	Res	Type	Atoms	Z	Observed(Å)	Ideal(Å)
1	A	31	TRP	CA-CB	-15.00	1.21	1.53
1	A	127	LYS	CD-CE	-9.77	1.26	1.51
1	A	30	GLY	C-N	-7.58	1.16	1.34
1	A	127	LYS	CG-CD	-6.73	1.29	1.52
1	A	31	TRP	C-N	6.37	1.44	1.33

All (5) bond angle outliers are listed below:

Mol	Chain	Res	Type	Atoms	Z	Observed(°)	Ideal(°)
1	A	31	TRP	CA-CB-CG	21.64	154.82	113.70
1	A	127	LYS	CG-CD-CE	16.36	160.96	111.90
1	A	31	TRP	CB-CA-C	11.27	132.94	110.40
1	A	31	TRP	N-CA-CB	-10.16	92.31	110.60
1	A	127	LYS	CB-CG-CD	-8.84	88.61	111.60

There are no chirality outliers.

There are no planarity outliers.

### 5.2 Close contacts

In the following table, the Non-H and H(model) columns list the number of non-hydrogen atoms and hydrogen atoms in the chain respectively. The H(added) column lists the number of hydrogens

added by MolProbity. The Clashes column lists the number of clashes within the asymmetric unit, and the number in parentheses is this value normalized per 1000 atoms of the molecule in the chain. The Symm-Clashes column gives symmetry related clashes, in the same way as for the Clashes column.

Mol	Chain	Non-H	H(model)	H(added)	Clashes	Symm-Clashes
1	A	944	0	906	40	0
1	B	944	0	907	23	0
2	A	31	0	50	40	0
3	A	4	0	3	2	0
3	B	12	0	9	0	0
4	A	143	0	0	9	0
4	B	163	0	0	2	0
All	All	2241	0	1875	82	0

Clashscore is defined as the number of clashes calculated for the entry per 1000 atoms (including hydrogens) of the entry. The overall clashscore for this entry is 22.

All (82) close contacts within the same asymmetric unit are listed below.

Atom-1	Atom-2	Distance(Å)	Clash(Å)
2:A:401:VIT:C18	2:A:401:VIT:C17	1.80	1.56
2:A:401:VIT:C9	2:A:401:VIT:C15	1.83	1.55
2:A:401:VIT:C16	2:A:401:VIT:C17	1.89	1.49
2:A:401:VIT:C16	2:A:401:VIT:C15	2.02	1.38
2:A:401:VIT:C11	2:A:401:VIT:C15	2.20	1.20
1:A:7:LYS:HA	2:A:401:VIT:HC13	1.32	1.10
2:A:401:VIT:H151	2:A:401:VIT:C11	1.78	1.10
2:A:401:VIT:H151	2:A:401:VIT:H111	1.09	1.08
2:A:401:VIT:C15	2:A:401:VIT:H111	1.88	0.98
1:A:2:LEU:O	2:A:401:VIT:H171	1.67	0.93
2:A:401:VIT:C20	2:A:401:VIT:C17	2.46	0.93
1:A:7:LYS:CA	2:A:401:VIT:HC13	2.03	0.87
2:A:401:VIT:H143	4:A:517:HOH:O	1.78	0.83
2:A:401:VIT:H201	2:A:401:VIT:H171	1.60	0.83
2:A:401:VIT:C14	4:A:517:HOH:O	2.26	0.82
2:A:401:VIT:H191	1:B:54:ASN:HD21	1.43	0.82
2:A:401:VIT:H201	2:A:401:VIT:C17	2.10	0.81
1:A:88:GLY:H	1:A:93:ASN:HD21	1.28	0.81
1:B:88:GLY:H	1:B:93:ASN:HD21	1.26	0.80
1:A:7:LYS:HA	2:A:401:VIT:C1	2.12	0.80
1:B:74:LYS:HE2	4:B:519:HOH:O	1.83	0.79
3:A:504:ACY:H1	4:A:537:HOH:O	1.82	0.78
1:B:55:LEU:HD22	1:B:94:ARG:HD3	1.66	0.78
1:A:6:GLY:HA3	2:A:401:VIT:H212	1.67	0.77

*Continued on next page...*



*Continued from previous page...*

Atom-1	Atom-2	Distance(Å)	Clash(Å)
1:A:23:SER:HB3	2:A:401:VIT:H141	1.67	0.74
2:A:401:VIT:H152	2:A:401:VIT:C9	2.14	0.74
2:A:401:VIT:O1	2:A:401:VIT:C15	2.38	0.70
1:B:88:GLY:H	1:B:93:ASN:ND2	1.90	0.69
1:A:2:LEU:HD11	2:A:401:VIT:H123	1.77	0.67
1:A:115:LYS:N	1:A:115:LYS:HD3	2.10	0.66
1:A:115:LYS:H	1:A:115:LYS:HD3	1.61	0.66
1:A:129:GLU:CD	1:A:129:GLU:H	2.01	0.63
1:A:7:LYS:O	1:A:11:GLU:HG3	1.99	0.63
1:B:55:LEU:CD2	1:B:94:ARG:HD3	2.30	0.61
1:A:114:SER:OG	1:A:116:LYS:HG2	2.01	0.60
1:B:115:LYS:HG2	1:B:118:MET:HE2	1.82	0.60
1:A:23:SER:CB	2:A:401:VIT:H141	2.32	0.58
2:A:401:VIT:H152	2:A:401:VIT:O1	2.04	0.57
2:A:401:VIT:C19	1:B:54:ASN:HD21	2.15	0.57
2:A:401:VIT:H142	4:A:517:HOH:O	1.98	0.56
2:A:401:VIT:H191	1:B:54:ASN:ND2	2.18	0.56
1:B:38:LYS:HA	1:B:38:LYS:HE3	1.89	0.55
1:A:7:LYS:HD2	2:A:401:VIT:H261	1.89	0.55
1:A:6:GLY:CA	2:A:401:VIT:H212	2.36	0.54
1:A:69:LYS:HE3	2:A:401:VIT:H121	1.89	0.54
1:B:7:LYS:O	1:B:11:GLU:HG3	2.08	0.53
1:B:129:GLU:O	1:B:129:GLU:HG3	2.09	0.53
1:B:24:SER:O	1:B:118:MET:HA	2.10	0.52
1:B:1:SER:HA	1:B:68:PRO:O	2.10	0.51
1:A:104:ILE:O	1:A:108:GLN:HG3	2.11	0.50
1:A:7:LYS:CB	2:A:401:VIT:HC13	2.42	0.50
1:B:121:PRO:HG2	1:B:125:LEU:CD1	2.41	0.50
1:A:115:LYS:H	1:A:115:LYS:HZ2	1.59	0.49
2:A:401:VIT:H122	4:A:508:HOH:O	2.12	0.48
1:B:34:LYS:O	1:B:126:CYS:HB3	2.13	0.48
1:B:124:PHE:HA	1:B:127:LYS:NZ	2.29	0.48
1:A:115:LYS:H	1:A:115:LYS:CD	2.26	0.48
1:A:88:GLY:H	1:A:93:ASN:ND2	2.05	0.47
2:A:401:VIT:H202	1:B:133:CYS:O	2.14	0.47
1:A:76:LYS:HE3	1:A:85:GLU:HG2	1.97	0.47
1:A:31:TRP:HZ2	1:B:46:PHE:HD2	1.63	0.46
1:B:121:PRO:HG2	1:B:125:LEU:HG	1.96	0.46
3:A:504:ACY:CH3	4:A:537:HOH:O	2.54	0.45
1:B:25:TYR:HB3	1:B:29:CYS:HB2	2.00	0.44
1:A:45:CYS:SG	2:A:401:VIT:C8	3.06	0.44
1:A:76:LYS:HD3	1:A:85:GLU:OE2	2.17	0.44

*Continued on next page...*

Continued from previous page...

Atom-1	Atom-2	Distance(Å)	Clash(Å)
1:A:20:PRO:HB3	4:B:576:HOH:O	2.17	0.44
1:A:3:LEU:O	2:A:401:VIT:H221	2.18	0.44
1:B:88:GLY:N	1:B:93:ASN:HD21	2.04	0.43
1:A:115:LYS:NZ	4:A:599:HOH:O	2.51	0.43
1:A:74:LYS:HD3	4:A:622:HOH:O	2.17	0.43
1:A:31:TRP:HZ2	1:B:46:PHE:CD2	2.36	0.43
1:A:7:LYS:HB2	2:A:401:VIT:H241	2.01	0.42
1:A:25:TYR:O	1:A:29:CYS:HB2	2.19	0.42
1:A:18:ALA:HB3	2:A:401:VIT:H193	2.01	0.42
2:A:401:VIT:HC11	2:A:401:VIT:H252	1.63	0.42
1:A:25:TYR:HB3	1:A:29:CYS:HB2	2.01	0.41
1:A:82:ILE:HG13	4:A:530:HOH:O	2.20	0.41
1:A:12:GLU:O	1:A:107:ARG:HD3	2.20	0.41
1:A:107:ARG:HH21	1:A:107:ARG:HG2	1.86	0.41
1:A:6:GLY:HA3	2:A:401:VIT:C20	2.51	0.40
1:A:115:LYS:N	1:A:115:LYS:CD	2.83	0.40

There are no symmetry-related clashes.

## 5.3 Torsion angles

### 5.3.1 Protein backbone ⓘ

In the following table, the Percentiles column shows the percent Ramachandran outliers of the chain as a percentile score with respect to all X-ray entries followed by that with respect to entries of similar resolution. The Analysed column shows the number of residues for which the backbone conformation was analysed, and the total number of residues.

Mol	Chain	Analysed	Favoured	Allowed	Outliers	Percentiles	
1	A	119/121 (98%)	115 (97%)	3 (2%)	1 (1%)	27	9
1	B	119/121 (98%)	118 (99%)	1 (1%)	0	100	100
All	All	238/242 (98%)	233 (98%)	4 (2%)	1 (0%)	43	25

All (1) Ramachandran outliers are listed below:

Mol	Chain	Res	Type
1	A	33	GLY

### 5.3.2 Protein sidechains ⓘ

In the following table, the Percentiles column shows the percent sidechain outliers of the chain as a percentile score with respect to all X-ray entries followed by that with respect to entries of similar resolution. The Analysed column shows the number of residues for which the sidechain conformation was analysed, and the total number of residues.

Mol	Chain	Analysed	Rotameric	Outliers	Percentiles	
1	A	104/104 (100%)	100 (96%)	4 (4%)	44	24
1	B	104/104 (100%)	102 (98%)	2 (2%)	69	56
All	All	208/208 (100%)	202 (97%)	6 (3%)	55	37

All (6) residues with a non-rotameric sidechain are listed below:

Mol	Chain	Res	Type
1	A	2	LEU
1	A	20	PRO
1	A	115	LYS
1	A	127	LYS
1	B	20	PRO
1	B	38	LYS

Some sidechains can be flipped to improve hydrogen bonding and reduce clashes. All (4) such sidechains are listed below:

Mol	Chain	Res	Type
1	A	93	ASN
1	B	54	ASN
1	B	93	ASN
1	B	108	GLN

### 5.3.3 RNA ⓘ

There are no RNA chains in this entry.

## 5.4 Non-standard residues in protein, DNA, RNA chains ⓘ

There are no non-standard protein/DNA/RNA residues in this entry.

## 5.5 Carbohydrates ⓘ

There are no carbohydrates in this entry.

## 5.6 Ligand geometry ⓘ

5 ligands are modelled in this entry.

In the following table, the Counts columns list the number of bonds (or angles) for which Mogul statistics could be retrieved, the number of bonds (or angles) that are observed in the model and the number of bonds (or angles) that are defined in the chemical component dictionary. The Link column lists molecule types, if any, to which the group is linked. The Z score for a bond length (or angle) is the number of standard deviations the observed value is removed from the expected value. A bond length (or angle) with  $|Z| > 2$  is considered an outlier worth inspection. RMSZ is the root-mean-square of all Z scores of the bond lengths (or angles).

Mol	Type	Chain	Res	Link	Bond lengths			Bond angles		
					Counts	RMSZ	$\# Z  > 2$	Counts	RMSZ	$\# Z  > 2$
2	VIT	A	401	-	32,32,32	5.32	16 (50%)	45,45,45	6.47	26 (57%)
3	ACY	A	504	-	3,3,3	1.06	0	3,3,3	1.70	1 (33%)
3	ACY	B	501	-	3,3,3	1.11	0	3,3,3	1.69	1 (33%)
3	ACY	B	502	-	3,3,3	1.04	0	3,3,3	1.68	1 (33%)
3	ACY	B	503	-	3,3,3	1.11	0	3,3,3	1.70	1 (33%)

In the following table, the Chirals column lists the number of chiral outliers, the number of chiral centers analysed, the number of these observed in the model and the number defined in the chemical component dictionary. Similar counts are reported in the Torsion and Rings columns. '-' means no outliers of that kind were identified.

Mol	Type	Chain	Res	Link	Chirals	Torsions	Rings
2	VIT	A	401	-	2/2/4/4	0/19/30/30	0/0/2/2
3	ACY	A	504	-	-	0/0/0/0	0/0/0/0
3	ACY	B	501	-	-	0/0/0/0	0/0/0/0
3	ACY	B	502	-	-	0/0/0/0	0/0/0/0
3	ACY	B	503	-	-	0/0/0/0	0/0/0/0

All (16) bond length outliers are listed below:

Mol	Chain	Res	Type	Atoms	Z	Observed(Å)	Ideal(Å)
2	A	401	VIT	C15-C9	23.45	1.83	1.53
2	A	401	VIT	C15-C16	12.07	2.02	1.52
2	A	401	VIT	C16-C17	7.56	1.89	1.52
2	A	401	VIT	C17-C18	5.08	1.80	1.52
2	A	401	VIT	C10-C3	4.18	1.58	1.51
2	A	401	VIT	C13-C6	-4.12	1.43	1.51
2	A	401	VIT	O1-C4	3.44	1.43	1.37
2	A	401	VIT	O1-C9	3.26	1.51	1.46
2	A	401	VIT	C4-C5	3.04	1.44	1.39

*Continued on next page...*

*Continued from previous page...*

Mol	Chain	Res	Type	Atoms	Z	Observed(Å)	Ideal(Å)
2	A	401	VIT	C11-C9	3.01	1.62	1.53
2	A	401	VIT	C11-C10	2.86	1.59	1.52
2	A	401	VIT	C21-C22	-2.68	1.39	1.52
2	A	401	VIT	C6-C5	2.33	1.45	1.40
2	A	401	VIT	O2-C7	2.27	1.42	1.37
2	A	401	VIT	C21-C20	-2.27	1.41	1.52
2	A	401	VIT	C3-C2	2.15	1.44	1.40

All (30) bond angle outliers are listed below:

Mol	Chain	Res	Type	Atoms	Z	Observed(°)	Ideal(°)
2	A	401	VIT	C16-C15-C9	23.13	164.25	116.05
2	A	401	VIT	C15-C9-C11	-23.03	79.06	111.03
2	A	401	VIT	O1-C9-C14	12.95	140.68	105.41
2	A	401	VIT	C15-C16-C17	10.28	135.80	112.51
2	A	401	VIT	C10-C11-C9	8.72	116.45	111.02
2	A	401	VIT	C21-C20-C18	7.20	135.88	115.14
2	A	401	VIT	O1-C9-C15	-6.63	90.15	105.44
2	A	401	VIT	C14-C9-C15	5.99	120.60	111.16
2	A	401	VIT	C19-C18-C17	5.66	131.78	111.02
2	A	401	VIT	O1-C4-C5	5.37	121.37	115.29
2	A	401	VIT	C13-C6-C5	-5.36	109.23	119.90
2	A	401	VIT	C13-C6-C7	5.33	131.00	120.35
2	A	401	VIT	C9-O1-C4	5.21	125.02	117.88
2	A	401	VIT	C21-C22-C23	4.96	129.43	115.14
2	A	401	VIT	C11-C10-C3	4.81	118.16	111.60
2	A	401	VIT	C22-C21-C20	4.35	135.33	113.02
2	A	401	VIT	C14-C9-C11	-4.32	101.91	112.26
2	A	401	VIT	O1-C4-C3	-4.04	118.12	122.45
2	A	401	VIT	C20-C18-C17	-3.64	93.13	111.92
2	A	401	VIT	C1-C23-C24	-3.47	98.27	111.02
2	A	401	VIT	C10-C3-C4	-3.20	116.66	120.29
2	A	401	VIT	C1-C23-C22	3.07	122.30	111.02
2	A	401	VIT	O2-C7-C6	2.60	125.67	118.14
2	A	401	VIT	C12-C5-C4	-2.33	117.23	121.09
3	B	503	ACY	O-C-CH3	-2.33	111.91	122.06
3	B	501	ACY	O-C-CH3	-2.32	111.94	122.06
3	A	504	ACY	O-C-CH3	-2.32	111.95	122.06
3	B	502	ACY	O-C-CH3	-2.30	112.05	122.06
2	A	401	VIT	O1-C9-C11	-2.07	108.01	108.81
2	A	401	VIT	C16-C17-C18	2.02	120.96	115.14

All (2) chirality outliers are listed below:

Mol	Chain	Res	Type	Atom
2	A	401	VIT	C23
2	A	401	VIT	C18

There are no torsion outliers.

There are no ring outliers.

## 5.7 Other polymers ⓘ

There are no such residues in this entry.

## 5.8 Polymer linkage issues

There are no chain breaks in this entry.

## 6 Fit of model and data ⓘ

### 6.1 Protein, DNA and RNA chains ⓘ

EDS was not executed - this section will therefore be empty.

### 6.2 Non-standard residues in protein, DNA, RNA chains ⓘ

EDS was not executed - this section will therefore be empty.

### 6.3 Carbohydrates ⓘ

EDS was not executed - this section will therefore be empty.

### 6.4 Ligands ⓘ

EDS was not executed - this section will therefore be empty.

### 6.5 Other polymers ⓘ

EDS was not executed - this section will therefore be empty.