



Full wwPDB X-ray Structure Validation Report

Feb 27, 2014 – 01:19 AM GMT

PDB ID : 3KPF
Title : X-ray structure of the mutant Lys300Met of polyamine oxidase from Zea mays
Authors : Fiorillo, A.; Ilari, A.; Tavladoraki, P.
Deposited on : 2009-11-16
Resolution : 2.90 Å(reported)

This is a full wwPDB validation report for a publicly released PDB entry.
We welcome your comments at validation@mail.wwpdb.org
A user guide is available at <http://wwpdb.org/ValidationPDFNotes.html>

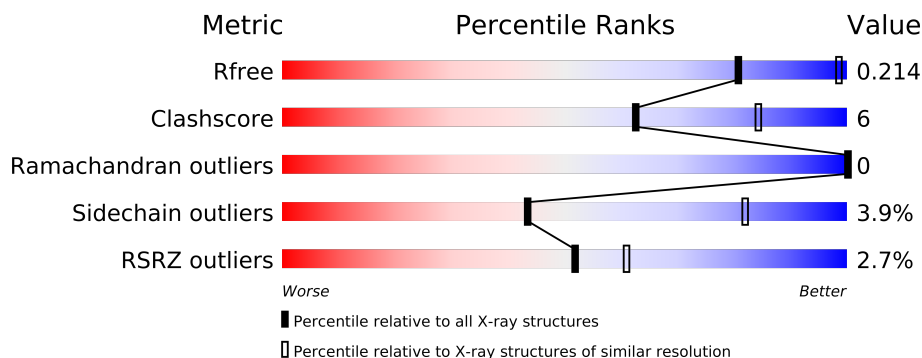
The following versions of software and data (see [references](#)) were used in the production of this report:

MolProbity : 4.02b-467
Mogul : 1.15 2013
Xtriage (Phenix) : dev-1323
EDS : stable22639
Percentile statistics : 21963
Refmac : 5.8.0049
CCP4 : 6.3.0 (Settle)
Ideal geometry (proteins) : Engh & Huber (2001)
Ideal geometry (DNA, RNA) : Parkinson et. al. (1996)
Validation Pipeline (wwPDB-VP) : stable22683

1 Overall quality at a glance

The reported resolution of this entry is 2.90 Å.

Percentile scores (ranging between 0-100) for global validation metrics of the entry are shown in the following graphic. The table shows the number of entries on which the scores are based.



Metric	Whole archive (#Entries)	Similar resolution (#Entries, resolution range(Å))
R_{free}	66092	1053 (2.90-2.90)
Clashscore	79885	1326 (2.90-2.90)
Ramachandran outliers	78287	1290 (2.90-2.90)
Sidechain outliers	78261	1292 (2.90-2.90)
RSRZ outliers	66119	1054 (2.90-2.90)

The table below summarises the geometric issues observed across the polymeric chains and their fit to the electron density. The red, orange, yellow and green segments on the lower bar indicate the fraction of residues that contain outliers for ≥ 3 , 2, 1 and 0 types of geometric quality criteria. The upper red bar (where present) indicates the fraction of residues that have poor fit to the electron density.

Mol	Chain	Length	Quality of chain
1	A	478	
1	B	478	

The following table lists non-polymeric compounds that are outliers for geometric or electron-density-fit criteria:

Mol	Type	Chain	Res	Geometry	Electron density
5	ACT	B	480	-	X

2 Entry composition

There are 8 unique types of molecules in this entry. The entry contains 7861 atoms, of which 0 are hydrogen and 0 are deuterium.

In the tables below, the ZeroOcc column contains the number of atoms modelled with zero occupancy, the AltConf column contains the number of residues with at least one atom in alternate conformation and the Trace column contains the number of residues modelled with at most 2 atoms.

- Molecule 1 is a protein called Polyamine oxidase.

Mol	Chain	Residues	Atoms					ZeroOcc	AltConf	Trace
1	A	467	Total	C	N	O	S	22	7	0
			3782	2417	633	714	18			
1	B	464	Total	C	N	O	S	24	3	0
			3746	2394	634	702	16			

There are 14 discrepancies between the modelled and reference sequences:

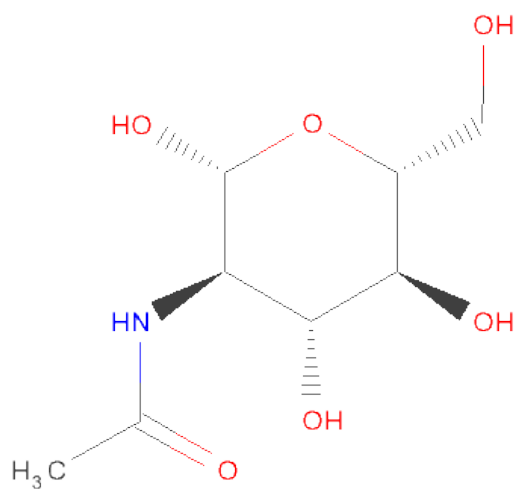
Chain	Residue	Modelled	Actual	Comment	Reference
A	300	MET	LYS	ENGINEERED	UNP O64411
A	473	HIS	-	EXPRESSION TAG	UNP O64411
A	474	HIS	-	EXPRESSION TAG	UNP O64411
A	475	HIS	-	EXPRESSION TAG	UNP O64411
A	476	HIS	-	EXPRESSION TAG	UNP O64411
A	477	HIS	-	EXPRESSION TAG	UNP O64411
A	478	HIS	-	EXPRESSION TAG	UNP O64411
B	300	MET	LYS	ENGINEERED	UNP O64411
B	473	HIS	-	EXPRESSION TAG	UNP O64411
B	474	HIS	-	EXPRESSION TAG	UNP O64411
B	475	HIS	-	EXPRESSION TAG	UNP O64411
B	476	HIS	-	EXPRESSION TAG	UNP O64411
B	477	HIS	-	EXPRESSION TAG	UNP O64411
B	478	HIS	-	EXPRESSION TAG	UNP O64411

- Molecule 2 is FLAVIN-ADENINE DINUCLEOTIDE (three-letter code: FAD) (formula: $C_{27}H_{33}N_9O_{15}P_2$).



Mol	Chain	Residues	Atoms				ZeroOcc	AltConf
2	A	1	Total	C	N	O	P	0
			53	27	9	15	2	
2	B	1	Total	C	N	O	P	0
			53	27	9	15	2	

- Molecule 3 is SUGAR (N-ACETYL-D-GLUCOSAMINE) (three-letter code: NAG) (formula: $C_8H_{15}NO_6$).

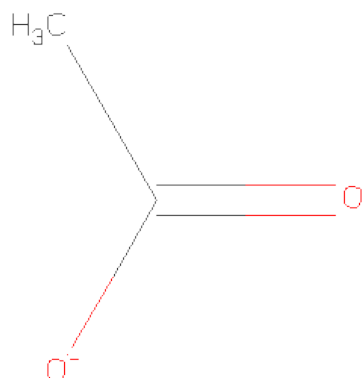


Mol	Chain	Residues	Atoms				ZeroOcc	AltConf
3	A	1	Total	C	N	O	0	0
			14	8	1	5		

- Molecule 4 is CHLORIDE ION (three-letter code: CL) (formula: Cl).

Mol	Chain	Residues	Atoms		ZeroOcc	AltConf
4	A	1	Total	Cl	0	0
			1	1		

- Molecule 5 is ACETATE ION (three-letter code: ACT) (formula: C₂H₃O₂).



Mol	Chain	Residues	Atoms			ZeroOcc	AltConf
5	A	1	Total	C	O	0	0
			4	2	2		
5	B	1	Total	C	O	0	0
			4	2	2		

- Molecule 6 is a polymer of unknown type called SUGAR (2-MER).

Mol	Chain	Residues	Atoms				ZeroOcc	AltConf
6	B	2	Total	C	N	O	0	0
			28	16	2	10		

There are 7 discrepancies between the modelled and reference sequences:

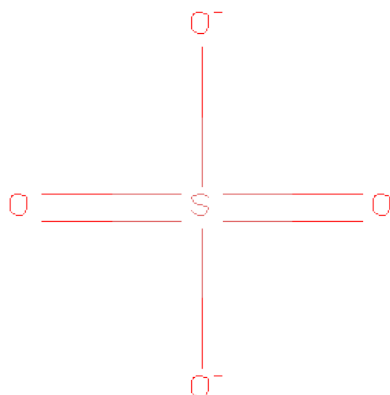
Chain	Residue	Modelled	Actual	Comment	Reference
B	300	MET	LYS	ENGINEERED	UNP O64411
B	473	HIS	-	EXPRESSION TAG	UNP O64411
B	474	HIS	-	EXPRESSION TAG	UNP O64411
B	475	HIS	-	EXPRESSION TAG	UNP O64411
B	476	HIS	-	EXPRESSION TAG	UNP O64411

Continued on next page...

Continued from previous page...

Chain	Residue	Modelled	Actual	Comment	Reference
B	477	HIS	-	EXPRESSION TAG	UNP O64411
B	478	HIS	-	EXPRESSION TAG	UNP O64411

- Molecule 7 is SULFATE ION (three-letter code: SO₄) (formula: O₄S).



Mol	Chain	Residues	Atoms			ZeroOcc	AltConf
7	B	1	Total	O	S	0	0
			5	4	1		

- Molecule 8 is water.

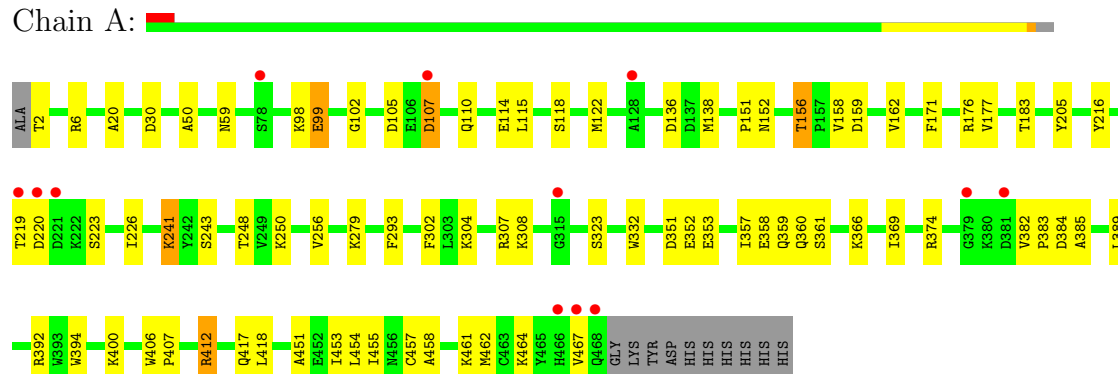
Mol	Chain	Residues	Atoms		ZeroOcc	AltConf
8	A	93	Total	O	0	0
			93	93		
8	B	78	Total	O	0	0
			78	78		

3 Residue-property plots

These plots are drawn for all protein, RNA and DNA chains in the entry. The first graphic for a chain summarises the proportions of errors displayed in the second graphic. The second graphic shows the sequence view annotated by issues in geometry and electron density. Residues are color-coded according to the number of geometric quality criteria for which they contain at least one outlier: green = 0, yellow = 1, orange = 2 and red = 3 or more. A red dot above a residue indicates a poor fit to the electron density ($RSRZ > 2$). Stretches of 2 or more consecutive residues without any outlier are shown as a green connector. Residues present in the sample, but not in the model, are shown in grey.

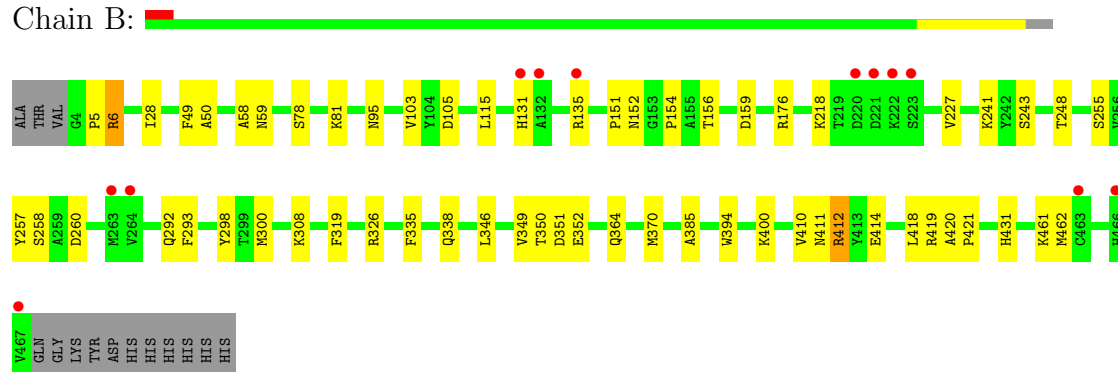
• Molecule 1: Polyamine oxidase

Chain A:



• Molecule 1: Polyamine oxidase

Chain B:



4 Data and refinement statistics

Property	Value	Source
Space group	P 31 2 1	Depositor
Cell constants a, b, c, α , β , γ	138.61Å 138.61Å 189.47Å 90.00° 90.00° 120.00°	Depositor
Resolution (Å)	50.00 – 2.90 26.19 – 2.90	Depositor EDS
% Data completeness (in resolution range)	96.9 (50.00-2.90) 97.0 (26.19-2.90)	Depositor EDS
R_{merge}	0.13	Depositor
R_{sym}	(Not available)	Depositor
$\langle I/\sigma(I) \rangle$ ¹	3.54 (at 2.89Å)	Xtriage
Refinement program	REFMAC 5.5.0043	Depositor
R, R_{free}	0.186 , 0.223 0.178 , 0.214	Depositor DCC
R_{free} test set	2316 reflections (5.33%)	DCC
Wilson B-factor (Å ²)	29.8	Xtriage
Anisotropy	0.517	Xtriage
Bulk solvent k_{sol} (e/Å ³), B_{sol} (Å ²)	0.36 , 8.4	EDS
Estimated twinning fraction	0.024 for -h,-k,l	Xtriage
L-test for twinning	$\langle L \rangle = 0.49$, $\langle L^2 \rangle = 0.33$	Xtriage
Outliers	1 of 45771 reflections (0.002%)	Xtriage
F_o, F_c correlation	0.93	EDS
Total number of atoms	7861	wwPDB-VP
Average B, all atoms (Å ²)	24.0	wwPDB-VP

Xtriage's analysis on translational NCS is as follows: *The largest off-origin peak in the Patterson function is 2.55% of the height of the origin peak. No significant pseudotranslation is detected.*

¹Intensities estimated from amplitudes.

5 Model quality i

5.1 Standard geometry i

Bond lengths and bond angles in the following residue types are not validated in this section: SO4, ACT, NAG, FAD, CL

The Z score for a bond length (or angle) is the number of standard deviations the observed value is removed from the expected value. A bond length (or angle) with $|Z| > 5$ is considered an outlier worth inspection. RMSZ is the root-mean-square of all Z scores of the bond lengths (or angles).

Mol	Chain	Bond lengths		Bond angles	
		RMSZ	$\# Z > 5$	RMSZ	$\# Z > 5$
1	A	0.51	2/3896 (0.1%)	0.58	0/5280
1	B	0.48	0/3848	0.57	0/5213
All	All	0.49	2/7744 (0.0%)	0.57	0/10493

All (2) bond length outliers are listed below:

Mol	Chain	Res	Type	Atoms	Z	Observed(Å)	Ideal(Å)
1	A	464	LYS	CG-CD	-5.18	1.34	1.52
1	A	99	GLU	C-N	5.05	1.45	1.34

There are no bond angle outliers.

There are no chirality outliers.

There are no planarity outliers.

5.2 Close contacts i

In the following table, the Non-H and H(model) columns list the number of non-hydrogen atoms and hydrogen atoms in the chain respectively. The H(added) column lists the number of hydrogens added by MolProbity. The Clashes column lists the number of clashes within the asymmetric unit, and the number in parentheses is this value normalized per 1000 atoms of the molecule in the chain. The Symm-Clashes column gives symmetry related clashes, in the same way as for the Clashes column.

Mol	Chain	Non-H	H(model)	H(added)	Clashes	Symm-Clashes
1	A	3782	0	3688	53	0
1	B	3746	0	3658	41	0
2	A	53	0	31	0	0
2	B	53	0	31	1	0
3	A	14	0	13	0	0

Continued on next page...

Continued from previous page...

Mol	Chain	Non-H	H(model)	H(added)	Clashes	Symm-Clashes
4	A	1	0	0	0	0
5	A	4	0	3	0	0
5	B	4	0	3	0	0
6	B	28	0	25	0	0
7	B	5	0	0	0	0
8	A	93	0	0	3	0
8	B	78	0	0	4	0
All	All	7861	0	7452	84	0

Clashscore is defined as the number of clashes calculated for the entry per 1000 atoms (including hydrogens) of the entry. The overall clashscore for this entry is 6.

All (84) close contacts within the same asymmetric unit are listed below.

Atom-1	Atom-2	Distance(Å)	Clash(Å)
1:A:454:LEU:HA	1:A:457[B]:CYS:SG	1.84	1.17
1:B:298:TYR:HA	1:B:350:THR:HG22	1.39	1.00
1:A:412:ARG:HG2	1:A:412:ARG:HH11	1.30	0.97
1:B:412:ARG:HH11	1:B:412:ARG:HG3	1.30	0.96
1:A:454:LEU:CA	1:A:457[B]:CYS:SG	2.58	0.91
1:A:453:ILE:O	1:A:457[B]:CYS:SG	2.32	0.87
1:A:352:GLU:HG3	8:B:514:HOH:O	1.84	0.77
1:A:366:LYS:HD2	1:A:385:ALA:HB3	1.69	0.74
1:A:351:ASP:OD1	1:B:176:ARG:NH2	2.17	0.74
1:A:412:ARG:CG	1:A:412:ARG:HH11	2.03	0.71
1:A:454:LEU:O	1:A:457[B]:CYS:SG	2.52	0.68
1:B:255:SER:HB3	1:B:257:TYR:CE1	2.30	0.67
1:B:349:VAL:O	1:B:350:THR:HG23	1.97	0.65
1:A:177:VAL:HG11	1:B:176:ARG:HD2	1.78	0.65
1:B:349:VAL:O	1:B:350:THR:CG2	2.45	0.64
1:A:250:LYS:HG3	1:A:256:VAL:HG22	1.79	0.64
1:B:412:ARG:NH1	1:B:412:ARG:HG3	2.06	0.63
1:B:6[A]:ARG:NH1	1:B:260:ASP:OD2	2.32	0.62
1:A:454:LEU:C	1:A:457[B]:CYS:SG	2.79	0.62
1:A:353:GLU:OE1	8:A:546:HOH:O	2.16	0.61
1:A:98:LYS:HG3	1:A:102:GLY:O	2.02	0.60
1:A:156:THR:HG21	8:A:572:HOH:O	2.01	0.60
1:A:374:ARG:HG3	1:A:382:VAL:CG2	2.32	0.59
1:B:6[B]:ARG:HD3	1:B:28:ILE:HG23	1.86	0.58
1:B:410:VAL:HG13	1:B:414:GLU:HG3	1.85	0.58
1:A:176:ARG:HD2	8:B:518:HOH:O	2.04	0.58
1:A:394:TRP:HE1	1:B:152:ASN:ND2	2.02	0.57
1:A:412:ARG:HG2	1:A:412:ARG:NH1	2.11	0.54

Continued on next page...

Continued from previous page...

Atom-1	Atom-2	Distance(Å)	Clash(Å)
1:B:349:VAL:C	1:B:350:THR:HG23	2.29	0.54
1:A:400:LYS:HB3	1:B:151:PRO:HG3	1.90	0.53
1:B:411:ASN:OD1	1:B:414:GLU:HG2	2.07	0.53
1:B:95:ASN:HB3	1:B:319:PHE:HB3	1.91	0.52
1:A:30:ASP:HB2	8:A:491:HOH:O	2.09	0.52
1:A:302:PHE:HB2	1:A:389:LEU:HB3	1.91	0.52
1:B:78:SER:O	1:B:81:LYS:HG3	2.11	0.51
1:B:218:LYS:HG3	1:B:227:VAL:HG23	1.93	0.51
1:B:335:PHE:HB3	1:B:338:GLN:HB2	1.92	0.51
1:A:152:ASN:ND2	1:B:394:TRP:HE1	2.09	0.50
1:A:458:ALA:O	1:A:461:LYS:HE3	2.13	0.49
1:A:136:ASP:N	1:A:136:ASP:OD1	2.46	0.48
1:B:431:HIS:CD2	8:B:511:HOH:O	2.67	0.48
1:A:352:GLU:OE2	1:B:326:ARG:HB3	2.14	0.48
1:A:138:MET:HB3	1:B:292:GLN:NE2	2.28	0.47
1:B:412:ARG:CG	1:B:412:ARG:NH1	2.74	0.47
1:B:370:MET:HE1	1:B:385:ALA:HB2	1.96	0.46
1:B:154:PRO:HB3	1:B:159:ASP:HB3	1.98	0.46
1:A:220:ASP:HB3	1:A:223:SER:HB3	1.98	0.46
1:B:131:HIS:CE1	1:B:135[A]:ARG:HH21	2.34	0.45
1:A:158:VAL:O	1:A:162:VAL:HG23	2.15	0.45
1:B:351:ASP:CG	1:B:352:GLU:N	2.70	0.45
1:B:351:ASP:CG	1:B:352:GLU:H	2.18	0.45
1:A:394:TRP:HE1	1:B:152:ASN:HD22	1.64	0.45
1:A:50:ALA:HB1	1:A:304:LYS:HE3	1.98	0.45
1:A:105:ASP:HB3	1:A:107[A]:ASP:OD2	2.16	0.45
1:B:241:LYS:NZ	8:B:505:HOH:O	2.49	0.44
1:A:156:THR:HG22	1:A:159:ASP:H	1.82	0.44
1:A:99:GLU:HG3	1:A:323:SER:HA	2.00	0.44
1:A:359:GLN:NE2	1:B:156:THR:HG22	2.32	0.44
1:A:20:ALA:HB3	1:A:216:TYR:OH	2.17	0.44
1:A:462:MET:HA	1:A:462:MET:HE3	2.00	0.44
1:A:171:PHE:CZ	1:A:183:THR:HB	2.53	0.43
1:A:353:GLU:O	1:A:357:ILE:HD12	2.17	0.43
1:A:110:GLN:HE21	1:A:114:GLU:HG3	1.83	0.43
1:B:131:HIS:CG	1:B:135[A]:ARG:HE	2.37	0.43
1:A:241:LYS:HA	1:A:279:LYS:O	2.19	0.42
1:B:300:MET:HB3	1:B:346:LEU:HD11	2.01	0.42
1:A:400:LYS:HD2	1:A:400:LYS:HA	1.92	0.42
1:A:307:ARG:HG2	1:A:383:PRO:HG3	2.03	0.41
1:B:241:LYS:HB2	1:B:248:THR:HB	2.03	0.41
1:A:358:GLU:HG2	1:A:392:ARG:HG2	2.02	0.41

Continued on next page...

Continued from previous page...

Atom-1	Atom-2	Distance(Å)	Clash(Å)
1:B:5:PRO:HD2	1:B:258:SER:O	2.20	0.41
1:A:98:LYS:O	1:A:99:GLU:C	2.59	0.41
1:B:420:ALA:HA	1:B:421:PRO:HD3	1.94	0.41
1:A:332:TRP:HH2	1:A:369:ILE:HG23	1.84	0.41
1:A:417:GLN:HG2	1:A:467:VAL:HG11	2.03	0.41
1:A:406:TRP:HA	1:A:407:PRO:HD3	1.94	0.41
1:A:219:THR:HG22	1:A:226:ILE:HA	2.03	0.41
1:B:58:ALA:HA	2:B:500:FAD:N5	2.36	0.41
1:A:118:SER:O	1:A:122[A]:MET:HG3	2.21	0.40
1:B:49:PHE:O	1:B:50:ALA:C	2.59	0.40
1:A:151:PRO:HG3	1:B:400:LYS:HB3	2.03	0.40
1:B:431:HIS:CD2	1:B:431:HIS:H	2.39	0.40
1:A:451:ALA:O	1:A:455:ILE:HG13	2.22	0.40

There are no symmetry-related clashes.

5.3 Torsion angles

5.3.1 Protein backbone ⓘ

In the following table, the Percentiles column shows the percent Ramachandran outliers of the chain as a percentile score with respect to all X-ray entries followed by that with respect to entries of similar resolution. The Analysed column shows the number of residues for which the backbone conformation was analysed, and the total number of residues.

Mol	Chain	Analysed	Favoured	Allowed	Outliers	Percentiles	
1	A	472/478 (99%)	451 (96%)	21 (4%)	0	100	100
1	B	465/478 (97%)	441 (95%)	24 (5%)	0	100	100
All	All	937/956 (98%)	892 (95%)	45 (5%)	0	100	100

There are no Ramachandran outliers to report.

5.3.2 Protein sidechains ⓘ

In the following table, the Percentiles column shows the percent sidechain outliers of the chain as a percentile score with respect to all X-ray entries followed by that with respect to entries of similar resolution. The Analysed column shows the number of residues for which the sidechain conformation was analysed, and the total number of residues.

Mol	Chain	Analysed	Rotameric	Outliers	Percentiles	
1	A	408/410 (100%)	390 (96%)	18 (4%)	39	77
1	B	401/410 (98%)	386 (96%)	15 (4%)	45	84
All	All	809/820 (99%)	776 (96%)	33 (4%)	43	80

All (33) residues with a non-rotameric sidechain are listed below:

Mol	Chain	Res	Type
1	A	2	THR
1	A	6	ARG
1	A	59	ASN
1	A	107[A]	ASP
1	A	107[B]	ASP
1	A	115	LEU
1	A	156	THR
1	A	205	TYR
1	A	241	LYS
1	A	243	SER
1	A	248	THR
1	A	293	PHE
1	A	308	LYS
1	A	360	GLN
1	A	361	SER
1	A	384	ASP
1	A	412	ARG
1	A	418	LEU
1	B	6[A]	ARG
1	B	6[B]	ARG
1	B	59	ASN
1	B	103	VAL
1	B	105	ASP
1	B	115	LEU
1	B	243	SER
1	B	293	PHE
1	B	308	LYS
1	B	364	GLN
1	B	412	ARG
1	B	418	LEU
1	B	419	ARG
1	B	461	LYS
1	B	462	MET

Some sidechains can be flipped to improve hydrogen bonding and reduce clashes. All (13) such sidechains are listed below:

Mol	Chain	Res	Type
1	A	45	HIS
1	A	110	GLN
1	A	131	HIS
1	A	152	ASN
1	A	359	GLN
1	A	360	GLN
1	A	411	ASN
1	A	431	HIS
1	B	110	GLN
1	B	152	ASN
1	B	359	GLN
1	B	360	GLN
1	B	431	HIS

5.3.3 RNA ⓘ

There are no RNA chains in this entry.

5.4 Non-standard residues in protein, DNA, RNA chains ⓘ

There are no non-standard protein/DNA/RNA residues in this entry.

5.5 Carbohydrates ⓘ

2 carbohydrates are modelled in this entry.

In the following table, the Counts columns list the number of bonds (or angles) for which Mogul statistics could be retrieved, the number of bonds (or angles) that are observed in the model and the number of bonds (or angles) that are defined in the chemical component dictionary. The Link column lists molecule types, if any, to which the group is linked. The Z score for a bond length (or angle) is the number of standard deviations the observed value is removed from the expected value. A bond length (or angle) with $|Z| > 2$ is considered an outlier worth inspection. RMSZ is the root-mean-square of all Z scores of the bond lengths (or angles).

Mol	Type	Chain	Res	Link	Bond lengths			Bond angles		
					Counts	RMSZ	$\# Z > 2$	Counts	RMSZ	$\# Z > 2$
6	NAG	B	600	1,6	12,14,15	0.68	1 (8%)	15,19,21	1.14	1 (6%)
6	NAG	B	601	6	12,14,15	0.75	0	15,19,21	1.40	3 (20%)

In the following table, the Chirals column lists the number of chiral outliers, the number of chiral centers analysed, the number of these observed in the model and the number defined in the chemical component dictionary. Similar counts are reported in the Torsion and Rings columns. '-' means

no outliers of that kind were identified.

Mol	Type	Chain	Res	Link	Chirals	Torsions	Rings
6	NAG	B	600	1,6	-	0/6/23/26	0/1/1/1
6	NAG	B	601	6	-	0/6/23/26	0/1/1/1

All (1) bond length outliers are listed below:

Mol	Chain	Res	Type	Atoms	Z	Observed(Å)	Ideal(Å)
6	B	600	NAG	O5-C5	-2.02	1.41	1.45

All (4) bond angle outliers are listed below:

Mol	Chain	Res	Type	Atoms	Z	Observed(°)	Ideal(°)
6	B	601	NAG	O5-C5-C6	3.21	110.34	106.98
6	B	601	NAG	C4-C3-C2	2.58	117.63	111.32
6	B	600	NAG	C3-C2-N2	-2.48	107.99	111.76
6	B	601	NAG	O5-C5-C4	-2.21	107.85	110.65

There are no chirality outliers.

There are no torsion outliers.

There are no ring outliers.

5.6 Ligand geometry ⓘ

Of 7 ligands modelled in this entry, 1 is monoatomic - leaving 6 for Mogul analysis.

In the following table, the Counts columns list the number of bonds (or angles) for which Mogul statistics could be retrieved, the number of bonds (or angles) that are observed in the model and the number of bonds (or angles) that are defined in the chemical component dictionary. The Link column lists molecule types, if any, to which the group is linked. The Z score for a bond length (or angle) is the number of standard deviations the observed value is removed from the expected value. A bond length (or angle) with $|Z| > 2$ is considered an outlier worth inspection. RMSZ is the root-mean-square of all Z scores of the bond lengths (or angles).

Mol	Type	Chain	Res	Link	Bond lengths			Bond angles		
					Counts	RMSZ	$\# Z > 2$	Counts	RMSZ	$\# Z > 2$
5	ACT	A	480	-	1,3,3	1.50	0	0,3,3	0.00	-
2	FAD	A	500	-	58,58,58	1.04	3 (5%)	85,89,89	1.77	14 (16%)
3	NAG	A	600	1	12,14,15	0.62	0	15,19,21	1.44	3 (20%)
7	SO4	B	479	-	4,4,4	0.22	0	6,6,6	0.12	0
5	ACT	B	480	-	1,3,3	1.62	0	0,3,3	0.00	-
2	FAD	B	500	-	58,58,58	0.95	3 (5%)	85,89,89	1.82	13 (15%)

In the following table, the Chirals column lists the number of chiral outliers, the number of chiral centers analysed, the number of these observed in the model and the number defined in the chemical component dictionary. Similar counts are reported in the Torsion and Rings columns. '-' means no outliers of that kind were identified.

Mol	Type	Chain	Res	Link	Chirals	Torsions	Rings
5	ACT	A	480	-	-	0/0/0/0	0/0/0/0
2	FAD	A	500	-	-	0/34/50/50	0/1/6/6
3	NAG	A	600	1	-	0/6/23/26	0/1/1/1
7	SO4	B	479	-	-	0/0/0/0	0/0/0/0
5	ACT	B	480	-	-	0/0/0/0	0/0/0/0
2	FAD	B	500	-	-	0/34/50/50	0/1/6/6

All (6) bond length outliers are listed below:

Mol	Chain	Res	Type	Atoms	Z	Observed(Å)	Ideal(Å)
2	A	500	FAD	C2A-N3A	3.38	1.38	1.32
2	B	500	FAD	C2A-N3A	3.03	1.38	1.32
2	B	500	FAD	C5X-N5	2.84	1.39	1.35
2	A	500	FAD	C2A-N1A	2.70	1.39	1.33
2	A	500	FAD	C5X-N5	2.61	1.39	1.35
2	B	500	FAD	C2A-N1A	2.38	1.38	1.33

All (30) bond angle outliers are listed below:

Mol	Chain	Res	Type	Atoms	Z	Observed(°)	Ideal(°)
2	B	500	FAD	N3A-C2A-N1A	-11.67	118.96	128.71
2	A	500	FAD	N3A-C2A-N1A	-9.72	120.58	128.71
2	A	500	FAD	C2-N1-C10	5.88	120.90	114.98
2	B	500	FAD	C2-N1-C10	4.70	119.72	114.98
2	A	500	FAD	C4X-N5-C5X	3.99	121.17	116.69
2	B	500	FAD	C4X-N5-C5X	3.67	120.81	116.69
2	A	500	FAD	C4X-C10-N1	-3.44	119.30	122.73
3	A	600	NAG	C3-C4-C5	-3.30	104.32	110.20
2	A	500	FAD	C4A-C5A-N7A	-3.19	106.79	109.52
2	B	500	FAD	C4X-C10-N1	-3.09	119.64	122.73
2	A	500	FAD	N3A-C4A-N9A	2.88	130.63	125.43
2	B	500	FAD	P-O3P-PA	-2.85	123.32	131.68
2	B	500	FAD	N3A-C4A-N9A	2.75	130.40	125.43
2	B	500	FAD	C5A-C4A-N3A	-2.66	119.91	125.70
2	A	500	FAD	C1B-N9A-C4A	-2.64	122.08	126.64
2	A	500	FAD	C4-N3-C2	-2.50	120.27	125.39
2	A	500	FAD	C5X-C9A-N10	2.49	119.25	116.80
2	A	500	FAD	C5'-C4'-C3'	-2.49	107.37	112.06

Continued on next page...

Continued from previous page...

Mol	Chain	Res	Type	Atoms	Z	Observed(°)	Ideal(°)
2	B	500	FAD	C4A-C5A-N7A	-2.47	107.41	109.52
2	B	500	FAD	N7A-C8A-N9A	-2.36	107.67	114.36
3	A	600	NAG	O5-C5-C6	2.35	109.45	106.98
2	A	500	FAD	N7A-C8A-N9A	-2.30	107.84	114.36
3	A	600	NAG	O5-C5-C4	-2.17	107.91	110.65
2	A	500	FAD	C5A-C4A-N3A	-2.16	120.99	125.70
2	A	500	FAD	P-O3P-PA	-2.15	125.38	131.68
2	B	500	FAD	C2A-N3A-C4A	2.13	120.08	114.01
2	B	500	FAD	C2'-C1'-N10	-2.12	109.64	112.45
2	B	500	FAD	C4-N3-C2	-2.10	121.08	125.39
2	B	500	FAD	C5X-C9A-N10	2.08	118.85	116.80
2	A	500	FAD	C1'-N10-C9A	2.01	120.83	118.87

There are no chirality outliers.

There are no torsion outliers.

There are no ring outliers.

5.7 Other polymers ⓘ

There are no such residues in this entry.

5.8 Polymer linkage issues

There are no chain breaks in this entry.

6 Fit of model and data ⓘ

6.1 Protein, DNA and RNA chains ⓘ

In the following table, the column labelled ‘#RSRZ> 2’ contains the number (and percentage) of RSRZ outliers, followed by percent RSRZ outliers for the chain as percentile scores relative to all X-ray entries and entries of similar resolution. The OWAB column contains the minimum, median, 95th percentile and maximum values of the occupancy-weighted average B-factor per residue. The column labelled ‘Q< 0.9’ lists the number of (and percentage) of residues with an average occupancy less than 0.9.

Mol	Chain	Analysed	<RSRZ>	#RSRZ>2			OWAB(Å ²)	Q<0.9
1	A	467/478 (97%)	-0.38	12 (2%)	53	63	14, 23, 35, 55	19 (4%)
1	B	464/478 (97%)	-0.38	12 (2%)	53	63	13, 23, 37, 50	16 (3%)
All	All	931/956 (97%)	-0.38	24 (2%)	52	63	13, 23, 36, 55	35 (3%)

All (24) RSRZ outliers are listed below:

Mol	Chain	Res	Type	RSRZ
1	A	221	ASP	4.0
1	A	468	GLN	3.7
1	B	466	HIS	3.0
1	B	223	SER	2.9
1	A	78	SER	2.9
1	A	466	HIS	2.8
1	B	264	VAL	2.7
1	B	221	ASP	2.7
1	A	467	VAL	2.7
1	B	132	ALA	2.7
1	A	379	GLY	2.5
1	B	220	ASP	2.5
1	A	107[A]	ASP	2.4
1	B	467	VAL	2.4
1	B	222	LYS	2.4
1	A	128	ALA	2.3
1	A	381	ASP	2.3
1	B	463	CYS	2.2
1	A	315	GLY	2.2
1	A	220	ASP	2.2
1	B	135[A]	ARG	2.1
1	B	263	MET	2.1
1	A	219	THR	2.0
1	B	131	HIS	2.0

6.2 Non-standard residues in protein, DNA, RNA chains ⓘ

There are no non-standard protein/DNA/RNA residues in this entry.

6.3 Carbohydrates ⓘ

In the following table, the Atoms column lists the number of modelled atoms in the group and the number defined in the chemical component dictionary. LLDF column lists the quality of electron density of the group with respect to its neighbouring residues in protein, DNA or RNA chains. The B-factors column lists the minimum, median, 95th percentile and maximum values of B factors of atoms in the group. The column labelled 'Q< 0.9' lists the number of atoms with occupancy less than 0.9.

Mol	Type	Chain	Res	Atoms	RSR	LLDF	B-factors(Å ²)	Q<0.9
6	NAG	B	600	14/15	0.27	1.80	30,43,53,54	0
6	NAG	B	601	14/15	0.53	-	40,67,81,82	0

6.4 Ligands ⓘ

In the following table, the Atoms column lists the number of modelled atoms in the group and the number defined in the chemical component dictionary. LLDF column lists the quality of electron density of the group with respect to its neighbouring residues in protein, DNA or RNA chains. The B-factors column lists the minimum, median, 95th percentile and maximum values of B factors of atoms in the group. The column labelled 'Q< 0.9' lists the number of atoms with occupancy less than 0.9.

Mol	Type	Chain	Res	Atoms	RSR	LLDF	B-factors(Å ²)	Q<0.9
5	ACT	B	480	4/4	0.32	4.21	30,48,53,58	0
3	NAG	A	600	14/15	0.29	1.11	30,38,45,48	0
5	ACT	A	480	4/4	0.17	0.33	24,42,43,46	0
2	FAD	B	500	53/53	0.11	-0.50	9,17,24,27	0
2	FAD	A	500	53/53	0.10	-1.08	8,15,23,25	0
7	SO4	B	479	5/5	0.11	-1.40	32,36,46,48	5
4	CL	A	479	1/1	0.17	-	52,52,52,52	0

6.5 Other polymers ⓘ

There are no such residues in this entry.