



# Full wwPDB X-ray Structure Validation Report

Feb 27, 2014 – 07:28 AM GMT

PDB ID : 4KSP  
Title : Crystal Structure of Human B-raf bound to a DFG-out Inhibitor TAK-632  
Authors : Yano, J.K.; Masanori, O.  
Deposited on : 2013-05-17  
Resolution : 2.93 Å(reported)

This is a full wwPDB validation report for a publicly released PDB entry.  
We welcome your comments at [validation@mail.wwpdb.org](mailto:validation@mail.wwpdb.org)  
A user guide is available at <http://wwpdb.org/ValidationPDFNotes.html>

---

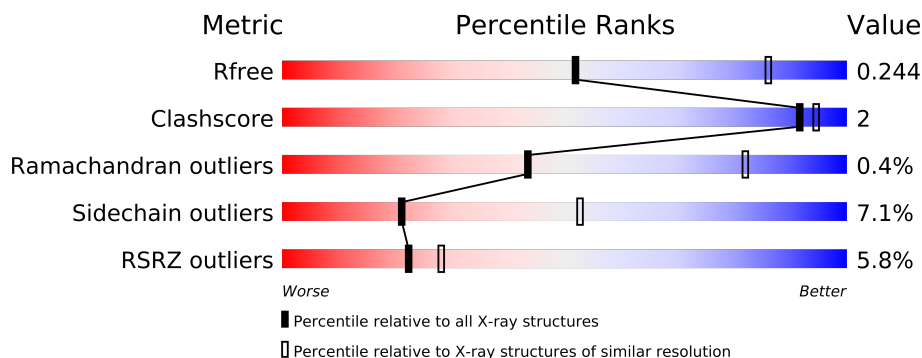
The following versions of software and data (see [references](#)) were used in the production of this report:

MolProbity : 4.02b-467  
Mogul : 1.15 2013  
Xtriage (Phenix) : dev-1323  
EDS : stable22639  
Percentile statistics : 21963  
Refmac : 5.8.0049  
CCP4 : 6.3.0 (Settle)  
Ideal geometry (proteins) : Engh & Huber (2001)  
Ideal geometry (DNA, RNA) : Parkinson et. al. (1996)  
Validation Pipeline (wwPDB-VP) : stable22683

# 1 Overall quality at a glance

The reported resolution of this entry is 2.93 Å.

Percentile scores (ranging between 0-100) for global validation metrics of the entry are shown in the following graphic. The table shows the number of entries on which the scores are based.



Metric	Whole archive (#Entries)	Similar resolution (#Entries, resolution range(Å))
$R_{free}$	66092	1424 (2.98-2.90)
Clashscore	79885	1761 (2.98-2.90)
Ramachandran outliers	78287	1708 (2.98-2.90)
Sidechain outliers	78261	1710 (2.98-2.90)
RSRZ outliers	66119	1425 (2.98-2.90)

The table below summarises the geometric issues observed across the polymeric chains and their fit to the electron density. The red, orange, yellow and green segments on the lower bar indicate the fraction of residues that contain outliers for  $\geq 3$ , 2, 1 and 0 types of geometric quality criteria. The upper red bar (where present) indicates the fraction of residues that have poor fit to the electron density.

Mol	Chain	Length	Quality of chain
1	A	284	
1	B	284	

## 2 Entry composition i

There are 3 unique types of molecules in this entry. The entry contains 4216 atoms, of which 0 are hydrogen and 0 are deuterium.

In the tables below, the ZeroOcc column contains the number of atoms modelled with zero occupancy, the AltConf column contains the number of residues with at least one atom in alternate conformation and the Trace column contains the number of residues modelled with at most 2 atoms.

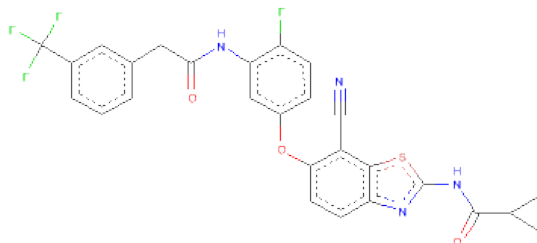
- Molecule 1 is a protein called Serine/threonine-proteinkinase B-raf.

Mol	Chain	Residues	Atoms					ZeroOcc	AltConf	Trace
1	A	257	Total	C	N	O	S	0	0	0
			2053	1316	357	367	13			
1	B	256	Total	C	N	O	S	0	0	0
			2046	1311	356	366	13			

There are 4 discrepancies between the modelled and reference sequences:

Chain	Residue	Modelled	Actual	Comment	Reference
A	442	GLY	-	EXPRESSION TAG	UNP P15056
A	443	SER	-	EXPRESSION TAG	UNP P15056
B	442	GLY	-	EXPRESSION TAG	UNP P15056
B	443	SER	-	EXPRESSION TAG	UNP P15056

- Molecule 2 is N-{7-CYANO-6-[4-FLUORO-3-({[3-(TRIFLUOROMETHYL)PHENYL]ACETYL}AMINO)PHENOXY]-1,3-BENZOTHAZOL-2-YL}CYCLOPROPANECARBOXAMIDE (three-letter code: 1SU) (formula: C<sub>27</sub>H<sub>18</sub>F<sub>4</sub>N<sub>4</sub>O<sub>3</sub>S).



Mol	Chain	Residues	Atoms						ZeroOcc	AltConf
2	A	1	Total	C	F	N	O	S	0	0
			39	27	4	4	3	1		
2	B	1	Total	C	F	N	O	S	0	0
			39	27	4	4	3	1		

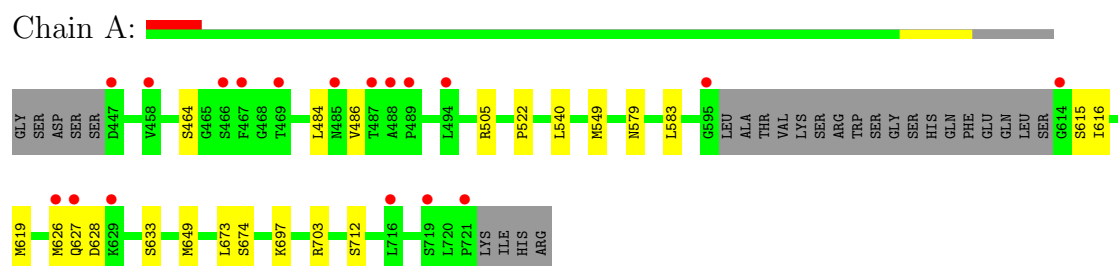
- Molecule 3 is water.

Mol	Chain	Residues	Atoms		ZeroOcc	AltConf
3	A	15	Total	O	0	0
			15	15		
3	B	24	Total	O	0	0
			24	24		

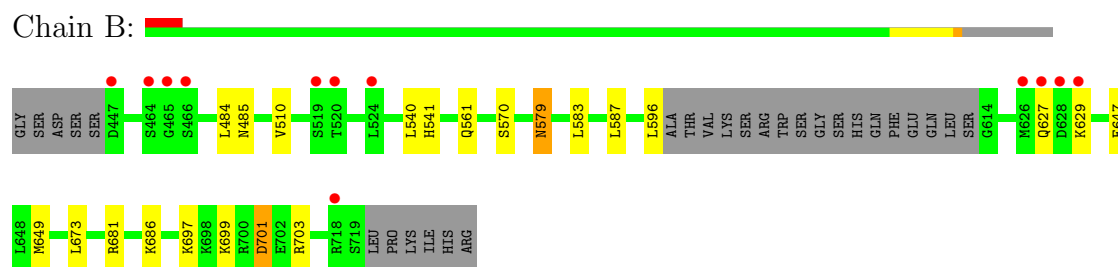
### 3 Residue-property plots

These plots are drawn for all protein, RNA and DNA chains in the entry. The first graphic for a chain summarises the proportions of errors displayed in the second graphic. The second graphic shows the sequence view annotated by issues in geometry and electron density. Residues are color-coded according to the number of geometric quality criteria for which they contain at least one outlier: green = 0, yellow = 1, orange = 2 and red = 3 or more. A red dot above a residue indicates a poor fit to the electron density ( $RSRZ > 2$ ). Stretches of 2 or more consecutive residues without any outlier are shown as a green connector. Residues present in the sample, but not in the model, are shown in grey.

- Molecule 1: Serine/threonine-proteinkinase B-raf



- Molecule 1: Serine/threonine-proteinkinase B-raf



## 4 Data and refinement statistics

Property	Value	Source
Space group	P 41 21 2	Depositor
Cell constants a, b, c, $\alpha$ , $\beta$ , $\gamma$	111.50Å 111.50Å 145.49Å 90.00° 90.00° 90.00°	Depositor
Resolution (Å)	35.00 – 2.93 38.05 – 2.93	Depositor EDS
% Data completeness (in resolution range)	98.4 (35.00-2.93) 98.6 (38.05-2.93)	Depositor EDS
$R_{merge}$	0.16	Depositor
$R_{sym}$	(Not available)	Depositor
$\langle I/\sigma(I) \rangle$ <sup>1</sup>	1.98 (at 2.95Å)	Xtriage
Refinement program	REFMAC 5.7.0029	Depositor
R, $R_{free}$	0.194 , 0.242 0.196 , 0.244	Depositor DCC
$R_{free}$ test set	1031 reflections (5.41%)	DCC
Wilson B-factor (Å <sup>2</sup> )	74.6	Xtriage
Anisotropy	0.049	Xtriage
Bulk solvent $k_{sol}$ (e/Å <sup>3</sup> ), $B_{sol}$ (Å <sup>2</sup> )	0.31 , 39.3	EDS
Estimated twinning fraction	No twinning to report.	Xtriage
L-test for twinning	$\langle  L  \rangle = 0.49$ , $\langle L^2 \rangle = 0.32$	Xtriage
Outliers	1 of 20085 reflections (0.005%)	Xtriage
$F_o, F_c$ correlation	0.95	EDS
Total number of atoms	4216	wwPDB-VP
Average B, all atoms (Å <sup>2</sup> )	79.0	wwPDB-VP

Xtriage's analysis on translational NCS is as follows: *The largest off-origin peak in the Patterson function is 5.31% of the height of the origin peak. No significant pseudotranslation is detected.*

<sup>1</sup>Intensities estimated from amplitudes.

## 5 Model quality

### 5.1 Standard geometry

Bond lengths and bond angles in the following residue types are not validated in this section: 1SU

The Z score for a bond length (or angle) is the number of standard deviations the observed value is removed from the expected value. A bond length (or angle) with  $|Z| > 5$  is considered an outlier worth inspection. RMSZ is the root-mean-square of all Z scores of the bond lengths (or angles).

Mol	Chain	Bond lengths		Bond angles	
		RMSZ	$\# Z  > 5$	RMSZ	$\# Z  > 5$
1	A	0.40	0/2098	0.61	0/2833
1	B	0.38	0/2090	0.62	0/2821
All	All	0.39	0/4188	0.62	0/5654

There are no bond length outliers.

There are no bond angle outliers.

There are no chirality outliers.

There are no planarity outliers.

### 5.2 Close contacts

In the following table, the Non-H and H(model) columns list the number of non-hydrogen atoms and hydrogen atoms in the chain respectively. The H(added) column lists the number of hydrogens added by MolProbity. The Clashes column lists the number of clashes within the asymmetric unit, and the number in parentheses is this value normalized per 1000 atoms of the molecule in the chain. The Symm-Clashes column gives symmetry related clashes, in the same way as for the Clashes column.

Mol	Chain	Non-H	H(model)	H(added)	Clashes	Symm-Clashes
1	A	2053	0	0	3	0
1	B	2046	0	0	4	0
2	A	39	0	17	0	0
2	B	39	0	17	1	0
3	A	15	0	0	0	0
3	B	24	0	0	0	0
All	All	4216	0	34	8	0

Clashscore is defined as the number of clashes calculated for the entry per 1000 atoms (including hydrogens) of the entry. The overall clashscore for this entry is 2.

All (8) close contacts within the same asymmetric unit are listed below.

Atom-1	Atom-2	Distance(Å)	Clash(Å)
1:A:626:MET:O	1:A:628:ASP:N	2.36	0.58
1:A:549:MET:SD	1:A:649:MET:CE	3.05	0.44
1:B:541:HIS:NE2	1:B:647:GLU:OE1	2.51	0.44
1:B:579:ASN:OD1	1:B:579:ASN:N	2.51	0.43
1:B:701:ASP:OD1	1:B:701:ASP:N	2.52	0.42
2:B:901:1SU:O32	2:B:901:1SU:S39	2.77	0.42
1:B:697:LYS:O	1:B:703:ARG:NH1	2.53	0.42
1:A:697:LYS:O	1:A:703:ARG:NH1	2.53	0.42

There are no symmetry-related clashes.

## 5.3 Torsion angles

### 5.3.1 Protein backbone ⓘ

In the following table, the Percentiles column shows the percent Ramachandran outliers of the chain as a percentile score with respect to all X-ray entries followed by that with respect to entries of similar resolution. The Analysed column shows the number of residues for which the backbone conformation was analysed, and the total number of residues.

Mol	Chain	Analysed	Favoured	Allowed	Outliers	Percentiles	
1	A	253/284 (89%)	238 (94%)	13 (5%)	2 (1%)	27	68
1	B	252/284 (89%)	238 (94%)	14 (6%)	0	100	100
All	All	505/568 (89%)	476 (94%)	27 (5%)	2 (0%)	43	82

All (2) Ramachandran outliers are listed below:

Mol	Chain	Res	Type
1	A	627	GLN
1	A	522	PRO

### 5.3.2 Protein sidechains ⓘ

In the following table, the Percentiles column shows the percent sidechain outliers of the chain as a percentile score with respect to all X-ray entries followed by that with respect to entries of similar resolution. The Analysed column shows the number of residues for which the sidechain conformation was analysed, and the total number of residues.



Mol	Chain	Analysed	Rotameric	Outliers	Percentiles	
1	A	225/250 (90%)	211 (94%)	14 (6%)	26	61
1	B	224/250 (90%)	206 (92%)	18 (8%)	17	45
All	All	449/500 (90%)	417 (93%)	32 (7%)	21	53

All (32) residues with a non-rotameric sidechain are listed below:

Mol	Chain	Res	Type
1	A	464	SER
1	A	484	LEU
1	A	486	VAL
1	A	505	ARG
1	A	540	LEU
1	A	579	ASN
1	A	583	LEU
1	A	615	SER
1	A	616	ILE
1	A	619	MET
1	A	633	SER
1	A	673	LEU
1	A	674	SER
1	A	712	SER
1	B	484	LEU
1	B	485	ASN
1	B	510	VAL
1	B	540	LEU
1	B	561	GLN
1	B	570	SER
1	B	579	ASN
1	B	583	LEU
1	B	587	LEU
1	B	596	LEU
1	B	627	GLN
1	B	629	LYS
1	B	649	MET
1	B	673	LEU
1	B	681	ARG
1	B	686	LYS
1	B	699	LYS
1	B	701	ASP

Some sidechains can be flipped to improve hydrogen bonding and reduce clashes. There are no such sidechains identified.

### 5.3.3 RNA ⓘ

There are no RNA chains in this entry.

## 5.4 Non-standard residues in protein, DNA, RNA chains ⓘ

There are no non-standard protein/DNA/RNA residues in this entry.

## 5.5 Carbohydrates ⓘ

There are no carbohydrates in this entry.

## 5.6 Ligand geometry ⓘ

2 ligands are modelled in this entry.

In the following table, the Counts columns list the number of bonds (or angles) for which Mogul statistics could be retrieved, the number of bonds (or angles) that are observed in the model and the number of bonds (or angles) that are defined in the chemical component dictionary. The Link column lists molecule types, if any, to which the group is linked. The Z score for a bond length (or angle) is the number of standard deviations the observed value is removed from the expected value. A bond length (or angle) with  $|Z| > 2$  is considered an outlier worth inspection. RMSZ is the root-mean-square of all Z scores of the bond lengths (or angles).

Mol	Type	Chain	Res	Link	Bond lengths			Bond angles		
					Counts	RMSZ	# $ Z  > 2$	Counts	RMSZ	# $ Z  > 2$
2	1SU	A	901	-	43,43,43	1.07	2 (4%)	62,63,63	1.54	8 (12%)
2	1SU	B	901	-	43,43,43	1.02	3 (6%)	62,63,63	1.64	11 (17%)

In the following table, the Chirals column lists the number of chiral outliers, the number of chiral centers analysed, the number of these observed in the model and the number defined in the chemical component dictionary. Similar counts are reported in the Torsion and Rings columns. '-' means no outliers of that kind were identified.

Mol	Type	Chain	Res	Link	Chirals	Torsions	Rings
2	1SU	A	901	-	-	2/26/30/30	0/2/5/5
2	1SU	B	901	-	-	2/26/30/30	0/2/5/5

All (5) bond length outliers are listed below:

Mol	Chain	Res	Type	Atoms	Z	Observed(Å)	Ideal(Å)
2	A	901	1SU	C11-C19	-4.06	1.38	1.43

*Continued on next page...*

*Continued from previous page...*

Mol	Chain	Res	Type	Atoms	Z	Observed(Å)	Ideal(Å)
2	B	901	1SU	C11-C19	-3.94	1.38	1.43
2	A	901	1SU	C21-N31	2.69	1.40	1.35
2	B	901	1SU	C25-C21	-2.23	1.47	1.51
2	B	901	1SU	C21-N31	2.03	1.39	1.35

All (19) bond angle outliers are listed below:

Mol	Chain	Res	Type	Atoms	Z	Observed(°)	Ideal(°)
2	B	901	1SU	O34-C17-C11	-4.77	111.46	115.40
2	B	901	1SU	O32-C21-C25	-4.66	117.01	121.89
2	A	901	1SU	O32-C21-C25	-4.64	117.03	121.89
2	B	901	1SU	S39-C20-N29	-3.75	113.59	120.99
2	A	901	1SU	C19-C14-N29	3.62	115.55	109.39
2	A	901	1SU	S39-C20-N29	-3.50	114.10	120.99
2	B	901	1SU	C17-O34-C16	3.49	128.71	117.67
2	B	901	1SU	C19-C14-N29	3.19	114.83	109.39
2	B	901	1SU	C23-C25-C21	3.04	120.52	117.41
2	B	901	1SU	O34-C17-C6	3.04	128.76	120.69
2	A	901	1SU	C17-O34-C16	2.75	126.35	117.67
2	A	901	1SU	O32-C21-N31	2.74	129.27	124.02
2	A	901	1SU	C14-C19-S39	-2.73	108.65	112.00
2	B	901	1SU	F35-C18-C15	2.68	120.14	117.48
2	B	901	1SU	C14-C19-S39	-2.46	108.97	112.00
2	A	901	1SU	C17-C11-C1	2.44	122.55	119.67
2	A	901	1SU	C17-C11-C19	-2.40	116.80	118.26
2	B	901	1SU	C5-C14-C19	-2.20	117.47	121.01
2	B	901	1SU	C26-C22-N30	-2.04	108.33	115.05

There are no chirality outliers.

All (4) torsion outliers are listed below:

Mol	Chain	Res	Type	Atoms
2	B	901	1SU	C23-C25-C21-N31
2	B	901	1SU	O32-C21-C25-C23
2	A	901	1SU	C24-C25-C21-N31
2	A	901	1SU	O32-C21-C25-C24

There are no ring outliers.

## 5.7 Other polymers ⓘ

There are no such residues in this entry.

## 5.8 Polymer linkage issues

There are no chain breaks in this entry.

## 6 Fit of model and data ⓘ

### 6.1 Protein, DNA and RNA chains ⓘ

In the following table, the column labelled ‘#RSRZ> 2’ contains the number (and percentage) of RSRZ outliers, followed by percent RSRZ outliers for the chain as percentile scores relative to all X-ray entries and entries of similar resolution. The OWAB column contains the minimum, median, 95<sup>th</sup> percentile and maximum values of the occupancy-weighted average B-factor per residue. The column labelled ‘Q< 0.9’ lists the number of (and percentage) of residues with an average occupancy less than 0.9.

Mol	Chain	Analysed	<RSRZ>	#RSRZ>2	OWAB(Å <sup>2</sup> )	Q<0.9
1	A	257/284 (90%)	0.20	18 (7%) 16 21	51, 73, 129, 161	0
1	B	256/284 (90%)	0.10	12 (4%) 30 39	52, 74, 124, 146	0
All	All	513/568 (90%)	0.15	30 (5%) 22 28	51, 74, 125, 161	0

All (30) RSRZ outliers are listed below:

Mol	Chain	Res	Type	RSRZ
1	B	629	LYS	5.7
1	A	614	GLY	5.6
1	B	465	GLY	4.0
1	A	488	ALA	3.8
1	A	447	ASP	3.7
1	B	464	SER	3.6
1	B	627	GLN	3.6
1	A	467	PHE	3.5
1	A	487	THR	3.4
1	A	469	THR	3.4
1	B	626	MET	3.3
1	A	489	PRO	3.2
1	B	628	ASP	3.2
1	B	520	THR	3.2
1	A	466	SER	3.2
1	A	721	PRO	3.2
1	A	629	LYS	2.8
1	B	447	ASP	2.7
1	B	466	SER	2.6
1	A	485	ASN	2.5
1	A	458	VAL	2.4
1	A	719	SER	2.4
1	A	626	MET	2.3
1	B	524	LEU	2.3

*Continued on next page...*

*Continued from previous page...*

Mol	Chain	Res	Type	RSRZ
1	A	595	GLY	2.2
1	B	718	ARG	2.2
1	A	627	GLN	2.1
1	B	519	SER	2.0
1	A	494	LEU	2.0
1	A	716	LEU	2.0

## 6.2 Non-standard residues in protein, DNA, RNA chains ⓘ

There are no non-standard protein/DNA/RNA residues in this entry.

## 6.3 Carbohydrates ⓘ

There are no carbohydrates in this entry.

## 6.4 Ligands ⓘ

In the following table, the Atoms column lists the number of modelled atoms in the group and the number defined in the chemical component dictionary. LLDF column lists the quality of electron density of the group with respect to its neighbouring residues in protein, DNA or RNA chains. The B-factors column lists the minimum, median, 95<sup>th</sup> percentile and maximum values of B factors of atoms in the group. The column labelled 'Q< 0.9' lists the number of atoms with occupancy less than 0.9.

Mol	Type	Chain	Res	Atoms	RSR	LLDF	B-factors(Å <sup>2</sup> )	Q<0.9
2	1SU	A	901	39/39	0.28	1.52	81,92,101,102	0
2	1SU	B	901	39/39	0.18	-0.29	66,77,94,98	0

## 6.5 Other polymers ⓘ

There are no such residues in this entry.