



Full wwPDB X-ray Structure Validation Report

Feb 27, 2014 – 12:11 PM GMT

PDB ID : 1KV2
Title : Human p38 MAP Kinase in Complex with BIRB 796
Authors : Pargellis, C.; Tong, L.; Churchill, L.; Cirillo, P.F.; Gilmore, T.; Graham, A.G.;
Grob, P.M.; Hickey, E.R.; Moss, N.; Pav, S.; Regan, J.
Deposited on : 2002-01-23
Resolution : 2.80 Å(reported)

This is a full wwPDB validation report for a publicly released PDB entry.
We welcome your comments at validation@mail.wwpdb.org
A user guide is available at <http://wwpdb.org/ValidationPDFNotes.html>

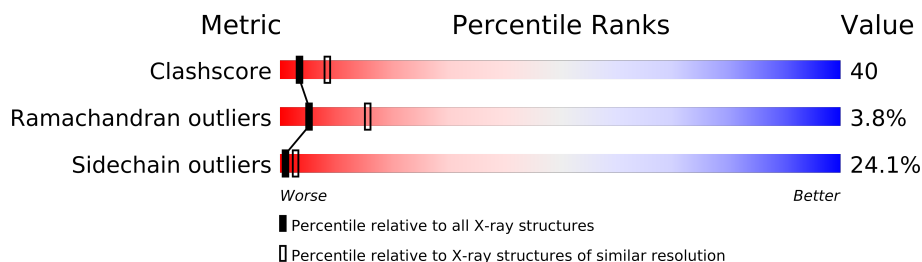
The following versions of software and data (see [references](#)) were used in the production of this report:

MolProbity : 4.02b-467
Mogul : 1.15 2013
Xtriage (Phenix) : **NOT EXECUTED**
EDS : **NOT EXECUTED**
Percentile statistics : 21963
Ideal geometry (proteins) : Engh & Huber (2001)
Ideal geometry (DNA, RNA) : Parkinson et. al. (1996)
Validation Pipeline (wwPDB-VP) : stable22683

1 Overall quality at a glance

The reported resolution of this entry is 2.80 Å.

Percentile scores (ranging between 0-100) for global validation metrics of the entry are shown in the following graphic. The table shows the number of entries on which the scores are based.



Metric	Whole archive (#Entries)	Similar resolution (#Entries, resolution range(Å))
Clashscore	79885	2295 (2.80-2.80)
Ramachandran outliers	78287	2252 (2.80-2.80)
Sidechain outliers	78261	2254 (2.80-2.80)

The table below summarises the geometric issues observed across the polymeric chains and their fit to the electron density. The red, orange, yellow and green segments on the lower bar indicate the fraction of residues that contain outliers for ≥ 3 , 2, 1 and 0 types of geometric quality criteria. The upper red bar (where present) indicates the fraction of residues that have poor fit to the electron density.

Note EDS was not executed.

Mol	Chain	Length	Quality of chain
1	A	360	

2 Entry composition i

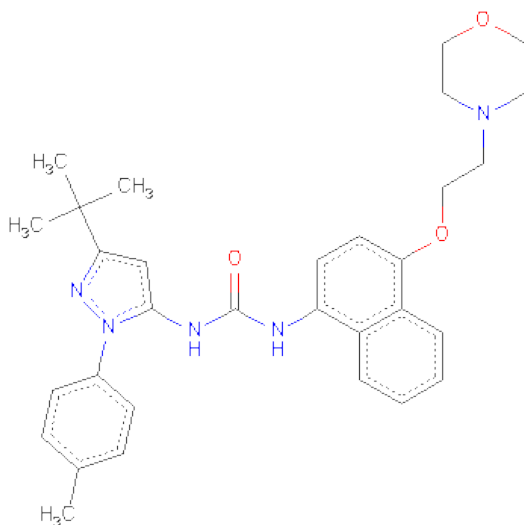
There are 2 unique types of molecules in this entry. The entry contains 2656 atoms, of which 0 are hydrogen and 0 are deuterium.

In the tables below, the ZeroOcc column contains the number of atoms modelled with zero occupancy, the AltConf column contains the number of residues with at least one atom in alternate conformation and the Trace column contains the number of residues modelled with at most 2 atoms.

- Molecule 1 is a protein called p38 MAP kinase.

Mol	Chain	Residues	Atoms					ZeroOcc	AltConf	Trace
			Total	C	N	O	S			
1	A	325	2617	1679	446	481	11	0	0	0

- Molecule 2 is 1-(5-TERT-BUTYL-2-P-TOLYL-2H-PYRAZOL-3-YL)-3-[4-(2-MORPHOLIN-4-YL-ETHOXY)-NAPHTHALEN-1-YL]-UREA (three-letter code: B96) (formula: C₃₁H₃₇N₅O₃).



Mol	Chain	Residues	Atoms				ZeroOcc	AltConf
			Total	C	N	O		
2	A	1	39	31	5	3	0	0

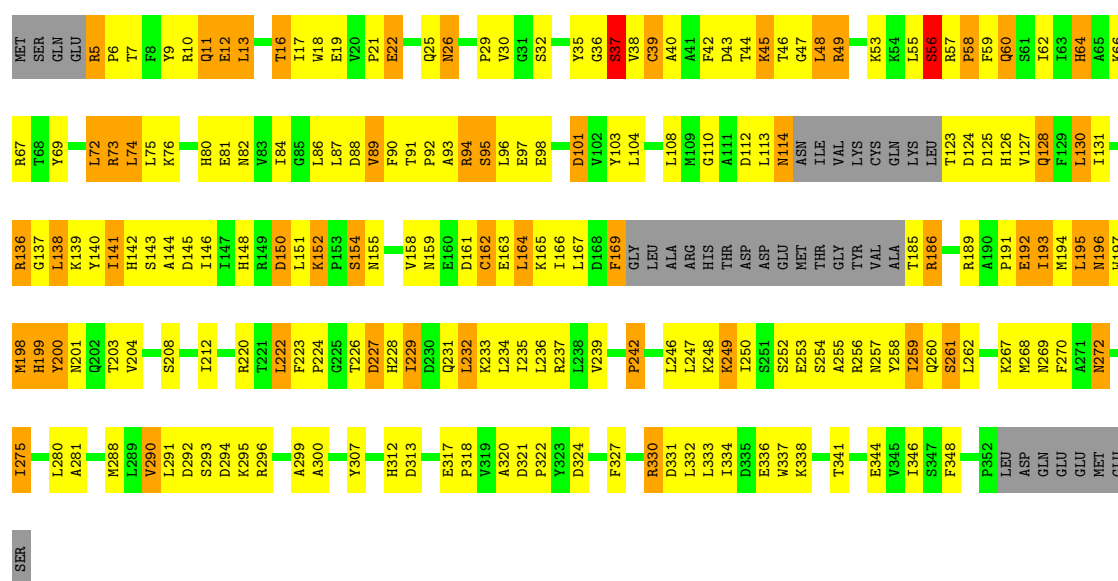
3 Residue-property plots

These plots are drawn for all protein, RNA and DNA chains in the entry. The first graphic for a chain summarises the proportions of errors displayed in the second graphic. The second graphic shows the sequence view annotated by issues in geometry and electron density. Residues are color-coded according to the number of geometric quality criteria for which they contain at least one outlier: green = 0, yellow = 1, orange = 2 and red = 3 or more. A red dot above a residue indicates a poor fit to the electron density ($RSRZ > 2$). Stretches of 2 or more consecutive residues without any outlier are shown as a green connector. Residues present in the sample, but not in the model, are shown in grey.

Note EDS was not executed.

- Molecule 1: p38 MAP kinase

Chain A:



4 Data and refinement statistics

Xtriage (Phenix) and EDS were not executed - this section will therefore be incomplete.

Property	Value	Source
Space group	P 21 21 21	Depositor
Cell constants a, b, c, α , β , γ	64.00Å 74.00Å 76.80Å 90.00° 90.00° 90.00°	Depositor
Resolution (Å)	20.00 – 2.80	Depositor
% Data completeness (in resolution range)	(Not available) (20.00-2.80)	Depositor
R_{merge}	(Not available)	Depositor
R_{sym}	(Not available)	Depositor
Refinement program	CNS	Depositor
R, R_{free}	0.228 , 0.318	Depositor
Estimated twinning fraction	No twinning to report.	Xtriage
Total number of atoms	2656	wwPDB-VP
Average B, all atoms (Å ²)	32.0	wwPDB-VP

5 Model quality

5.1 Standard geometry

Bond lengths and bond angles in the following residue types are not validated in this section: B96

The Z score for a bond length (or angle) is the number of standard deviations the observed value is removed from the expected value. A bond length (or angle) with $|Z| > 5$ is considered an outlier worth inspection. RMSZ is the root-mean-square of all Z scores of the bond lengths (or angles).

Mol	Chain	Bond lengths		Bond angles	
		RMSZ	$\# Z > 5$	RMSZ	$\# Z > 5$
1	A	0.55	0/2678	0.73	0/3637

There are no bond length outliers.

There are no bond angle outliers.

There are no chirality outliers.

There are no planarity outliers.

5.2 Close contacts

In the following table, the Non-H and H(model) columns list the number of non-hydrogen atoms and hydrogen atoms in the chain respectively. The H(added) column lists the number of hydrogens added by MolProbity. The Clashes column lists the number of clashes within the asymmetric unit, and the number in parentheses is this value normalized per 1000 atoms of the molecule in the chain. The Symm-Clashes column gives symmetry related clashes, in the same way as for the Clashes column.

Mol	Chain	Non-H	H(model)	H(added)	Clashes	Symm-Clashes
1	A	2617	0	2598	209	0
2	A	39	0	37	6	0
All	All	2656	0	2635	209	0

Clashscore is defined as the number of clashes calculated for the entry per 1000 atoms (including hydrogens) of the entry. The overall clashscore for this entry is 40.

All (209) close contacts within the same asymmetric unit are listed below.

Atom-1	Atom-2	Distance(Å)	Clash(Å)
1:A:275:ILE:HD12	1:A:275:ILE:H	1.27	0.99
1:A:229:ILE:HG23	1:A:258:TYR:OH	1.70	0.92

Continued on next page...

Continued from previous page...

Atom-1	Atom-2	Distance(Å)	Clash(Å)
1:A:275:ILE:HD12	1:A:275:ILE:N	1.84	0.91
1:A:233:LYS:NZ	1:A:237:ARG:HH11	1.67	0.91
1:A:141:ILE:HG13	1:A:142:HIS:N	1.83	0.90
1:A:197:TRP:HD1	1:A:198:MET:H	1.21	0.89
1:A:148:HIS:HE1	1:A:167:LEU:O	1.53	0.88
1:A:235:ILE:O	1:A:239:VAL:HG22	1.75	0.87
1:A:197:TRP:HE1	1:A:199:HIS:CE1	1.91	0.87
1:A:93:ALA:HB1	1:A:98:GLU:HB3	1.60	0.84
1:A:258:TYR:CE2	1:A:262:LEU:HD11	2.15	0.81
1:A:193:ILE:HD11	1:A:204:VAL:HG11	1.63	0.80
1:A:62:ILE:HG13	1:A:334:ILE:HG13	1.65	0.79
1:A:148:HIS:HD2	1:A:150:ASP:H	1.31	0.78
1:A:73:ARG:NH2	1:A:324:ASP:O	2.16	0.78
1:A:84:ILE:HG22	1:A:166:ILE:O	1.83	0.77
1:A:233:LYS:NZ	1:A:237:ARG:NH1	2.33	0.76
1:A:193:ILE:HG12	1:A:200:TYR:CD1	2.20	0.76
1:A:36:GLY:O	1:A:37:SER:HB2	1.83	0.76
1:A:155:ASN:ND2	1:A:169:PHE:H	1.82	0.76
1:A:197:TRP:NE1	1:A:199:HIS:ND1	2.34	0.75
1:A:281:ALA:HB2	1:A:307:TYR:CE1	2.21	0.75
1:A:258:TYR:HE2	1:A:262:LEU:HD11	1.54	0.73
1:A:112:ASP:C	1:A:114:ASN:H	1.93	0.72
1:A:43:ASP:HB3	1:A:48:LEU:HD12	1.70	0.72
1:A:137:GLY:O	1:A:141:ILE:HG23	1.90	0.71
1:A:152:LYS:HZ3	1:A:185:THR:N	1.87	0.71
1:A:233:LYS:HZ1	1:A:237:ARG:NH1	1.89	0.70
1:A:66:LYS:HG3	1:A:337:TRP:CZ2	2.27	0.70
1:A:95:SER:OG	1:A:97:GLU:HG3	1.91	0.70
1:A:233:LYS:HZ1	1:A:237:ARG:HH11	1.37	0.70
1:A:193:ILE:HD11	1:A:204:VAL:CG1	2.22	0.69
1:A:74:LEU:HD21	1:A:146:ILE:HD13	1.75	0.69
1:A:257:ASN:O	1:A:261:SER:HB2	1.92	0.69
1:A:148:HIS:CE1	1:A:167:LEU:O	2.43	0.68
1:A:332:LEU:HB3	1:A:336:GLU:OE1	1.93	0.68
1:A:158:VAL:HG22	1:A:164:LEU:HB2	1.76	0.66
1:A:69:TYR:CZ	1:A:73:ARG:HD3	2.31	0.65
1:A:253:GLU:O	1:A:257:ASN:HB2	1.96	0.65
1:A:167:LEU:HA	2:A:391:B96:H172	1.78	0.65
1:A:239:VAL:HG21	1:A:291:LEU:CD1	2.26	0.65
1:A:72:LEU:HD13	1:A:344:GLU:CB	2.26	0.64
1:A:312:HIS:CE1	1:A:317:GLU:OE2	2.51	0.64
1:A:123:THR:HG22	1:A:125:ASP:H	1.64	0.63

Continued on next page...

Continued from previous page...

Atom-1	Atom-2	Distance(Å)	Clash(Å)
1:A:197:TRP:HD1	1:A:198:MET:N	1.93	0.63
1:A:32:SER:HA	1:A:37:SER:HA	1.80	0.63
1:A:58:PRO:HG2	1:A:101:ASP:HA	1.80	0.63
1:A:80:HIS:CD2	1:A:82:ASN:H	2.16	0.63
1:A:82:ASN:OD1	1:A:136:ARG:HD3	1.98	0.62
1:A:269:ASN:HD22	1:A:272:ASN:HD21	1.46	0.62
1:A:123:THR:HB	1:A:126:HIS:ND1	2.15	0.62
1:A:66:LYS:HG3	1:A:337:TRP:CE2	2.35	0.62
1:A:233:LYS:HZ2	1:A:237:ARG:HH11	1.45	0.62
1:A:197:TRP:CD1	1:A:198:MET:N	2.66	0.62
1:A:275:ILE:N	1:A:275:ILE:CD1	2.55	0.62
1:A:229:ILE:HG13	1:A:258:TYR:CE1	2.35	0.62
1:A:253:GLU:HA	1:A:256:ARG:NH2	2.14	0.61
1:A:7:THR:HB	1:A:22:GLU:CG	2.30	0.61
1:A:185:THR:HG22	1:A:186:ARG:H	1.66	0.61
1:A:288:MET:O	1:A:296:ARG:HD2	2.01	0.61
1:A:239:VAL:HG21	1:A:291:LEU:HD11	1.81	0.61
1:A:140:TYR:CE1	1:A:320:ALA:HB2	2.37	0.60
1:A:292:ASP:OD1	1:A:294:ASP:HB2	2.01	0.60
1:A:141:ILE:HD12	1:A:146:ILE:HG22	1.84	0.59
1:A:152:LYS:HD2	1:A:154:SER:OG	2.01	0.59
1:A:269:ASN:CB	1:A:272:ASN:ND2	2.65	0.59
1:A:155:ASN:HD21	1:A:169:PHE:H	1.49	0.59
1:A:42:PHE:CE1	1:A:47:GLY:O	2.55	0.59
1:A:269:ASN:HB2	1:A:272:ASN:ND2	2.18	0.59
1:A:224:PRO:HD2	1:A:234:LEU:HD13	1.84	0.58
1:A:242:PRO:HG2	1:A:259:ILE:HG21	1.86	0.58
1:A:36:GLY:O	1:A:37:SER:CB	2.51	0.58
1:A:294:ASP:O	1:A:295:LYS:HD3	2.04	0.57
1:A:223:PHE:HB2	1:A:231:GLN:HE22	1.70	0.57
1:A:57:ARG:O	1:A:64:HIS:HD2	1.88	0.57
1:A:49:ARG:HB3	1:A:108:LEU:HD23	1.86	0.57
1:A:127:VAL:HG22	1:A:307:TYR:OH	2.05	0.57
1:A:112:ASP:O	1:A:114:ASN:N	2.38	0.56
1:A:53:LYS:HD3	1:A:55:LEU:CD2	2.36	0.56
1:A:144:ALA:O	1:A:145:ASP:HB2	2.04	0.56
1:A:208:SER:O	1:A:212:ILE:HD12	2.06	0.56
1:A:126:HIS:O	1:A:130:LEU:HB2	2.05	0.55
1:A:195:LEU:HD12	1:A:196:ASN:N	2.21	0.55
1:A:69:TYR:OH	1:A:73:ARG:HD3	2.06	0.55
1:A:72:LEU:HD13	1:A:344:GLU:HB2	1.89	0.55
1:A:233:LYS:HZ2	1:A:237:ARG:NH1	2.03	0.54

Continued on next page...

Continued from previous page...

Atom-1	Atom-2	Distance(Å)	Clash(Å)
1:A:11:GLN:O	1:A:18:TRP:N	2.40	0.54
1:A:237:ARG:HG2	1:A:268:MET:HE3	1.90	0.54
1:A:312:HIS:HE1	1:A:317:GLU:OE2	1.88	0.54
1:A:252:SER:OG	1:A:255:ALA:N	2.32	0.54
1:A:10:ARG:HG2	1:A:19:GLU:HG2	1.89	0.54
1:A:141:ILE:HD12	1:A:146:ILE:CG2	2.38	0.53
1:A:67:ARG:HG3	2:A:391:B96:C25	2.38	0.53
1:A:72:LEU:HD13	1:A:344:GLU:HB3	1.88	0.53
1:A:29:PRO:HA	1:A:39:CYS:SG	2.47	0.53
1:A:74:LEU:CD2	1:A:146:ILE:HD13	2.39	0.53
1:A:197:TRP:HE1	1:A:199:HIS:HD1	1.50	0.52
1:A:164:LEU:O	1:A:164:LEU:HD23	2.09	0.52
1:A:321:ASP:HB3	1:A:322:PRO:HD2	1.90	0.52
1:A:46:THR:OG1	1:A:48:LEU:HG	2.08	0.52
1:A:194:MET:CE	1:A:231:GLN:HG2	2.40	0.52
1:A:66:LYS:HE3	1:A:337:TRP:CZ2	2.45	0.52
1:A:46:THR:OG1	1:A:48:LEU:HD11	2.10	0.52
1:A:48:LEU:O	1:A:48:LEU:HD12	2.10	0.52
1:A:164:LEU:HD23	1:A:164:LEU:C	2.31	0.52
1:A:46:THR:OG1	1:A:48:LEU:CD1	2.57	0.52
1:A:246:LEU:O	1:A:249:LYS:HB2	2.10	0.51
1:A:21:PRO:HD3	1:A:90:PHE:CE1	2.46	0.51
1:A:124:ASP:O	1:A:128:GLN:HB2	2.11	0.51
1:A:49:ARG:HD3	1:A:108:LEU:HD23	1.92	0.51
1:A:201:ASN:ND2	1:A:203:THR:OG1	2.43	0.51
1:A:139:LYS:O	1:A:143:SER:HB3	2.11	0.51
1:A:141:ILE:CD1	1:A:146:ILE:HG22	2.41	0.50
1:A:94:ARG:O	1:A:95:SER:CB	2.58	0.50
1:A:236:LEU:CD2	1:A:291:LEU:HD21	2.42	0.50
1:A:7:THR:HB	1:A:22:GLU:HG2	1.94	0.50
1:A:13:LEU:N	1:A:16:THR:O	2.45	0.50
1:A:312:HIS:ND1	1:A:317:GLU:OE1	2.42	0.49
1:A:148:HIS:CD2	1:A:150:ASP:H	2.22	0.49
1:A:290:VAL:HG11	1:A:296:ARG:HA	1.94	0.49
1:A:95:SER:OG	1:A:97:GLU:CG	2.59	0.48
1:A:62:ILE:CG1	1:A:334:ILE:HG13	2.39	0.48
1:A:148:HIS:HD2	1:A:150:ASP:N	2.05	0.48
1:A:112:ASP:OD2	1:A:112:ASP:O	2.32	0.48
1:A:74:LEU:HD21	1:A:146:ILE:CD1	2.43	0.48
1:A:7:THR:HB	1:A:22:GLU:HG3	1.95	0.47
1:A:112:ASP:C	1:A:114:ASN:N	2.58	0.47
1:A:43:ASP:O	1:A:47:GLY:N	2.45	0.47

Continued on next page...

Continued from previous page...

Atom-1	Atom-2	Distance(Å)	Clash(Å)
1:A:239:VAL:HG21	1:A:291:LEU:HD13	1.96	0.47
1:A:127:VAL:CG2	1:A:307:TYR:OH	2.63	0.47
1:A:269:ASN:O	1:A:272:ASN:N	2.48	0.47
1:A:9:TYR:O	1:A:19:GLU:HA	2.14	0.47
1:A:88:ASP:OD2	1:A:89:VAL:N	2.44	0.47
1:A:25:GLN:O	1:A:26:ASN:C	2.53	0.46
1:A:290:VAL:HG13	1:A:296:ARG:HD3	1.98	0.46
1:A:191:PRO:O	1:A:193:ILE:N	2.49	0.46
1:A:42:PHE:HE1	1:A:47:GLY:O	1.94	0.46
1:A:93:ALA:HB1	1:A:98:GLU:CB	2.40	0.46
1:A:267:LYS:HE2	1:A:270:PHE:CE2	2.51	0.46
1:A:45:LYS:HB3	1:A:45:LYS:HE3	1.69	0.46
1:A:123:THR:CB	1:A:126:HIS:ND1	2.80	0.45
1:A:7:THR:O	1:A:22:GLU:HG3	2.16	0.45
1:A:161:ASP:O	1:A:162:CYS:HB2	2.15	0.45
1:A:299:ALA:O	1:A:300:ALA:C	2.54	0.45
1:A:275:ILE:CD1	1:A:275:ILE:H	1.93	0.45
1:A:72:LEU:HD12	1:A:341:THR:HG23	1.98	0.45
1:A:290:VAL:CG1	1:A:296:ARG:HA	2.47	0.45
1:A:138:LEU:HA	1:A:138:LEU:HD12	1.83	0.45
1:A:123:THR:O	1:A:127:VAL:HG13	2.17	0.45
1:A:94:ARG:NH1	1:A:95:SER:HB3	2.32	0.45
1:A:280:LEU:HD23	1:A:280:LEU:HA	1.70	0.45
1:A:88:ASP:HA	1:A:348:PHE:CE2	2.52	0.44
1:A:30:VAL:HG22	1:A:38:VAL:O	2.17	0.44
1:A:55:LEU:O	1:A:58:PRO:HD3	2.17	0.44
1:A:222:LEU:HD13	1:A:223:PHE:CE1	2.52	0.44
1:A:327:PHE:HA	1:A:330:ARG:HH11	1.82	0.44
1:A:5:ARG:NE	1:A:94:ARG:HB2	2.32	0.44
1:A:5:ARG:NH1	1:A:5:ARG:HG2	2.33	0.44
1:A:123:THR:HB	1:A:126:HIS:HB2	2.00	0.44
1:A:123:THR:HG22	1:A:125:ASP:N	2.29	0.44
1:A:255:ALA:O	1:A:259:ILE:HG12	2.18	0.44
1:A:317:GLU:N	1:A:318:PRO:CD	2.81	0.43
1:A:55:LEU:HD21	1:A:104:LEU:CD1	2.48	0.43
1:A:84:ILE:HA	1:A:165:LYS:HD3	1.99	0.43
1:A:267:LYS:HE2	1:A:270:PHE:HE2	1.83	0.43
1:A:258:TYR:C	1:A:258:TYR:CD2	2.92	0.43
1:A:108:LEU:HD12	2:A:391:B96:H482	1.99	0.43
1:A:130:LEU:HA	1:A:130:LEU:HD12	1.86	0.43
1:A:94:ARG:O	1:A:95:SER:HB3	2.17	0.43
1:A:313:ASP:OD1	1:A:313:ASP:C	2.56	0.43

Continued on next page...

Continued from previous page...

Atom-1	Atom-2	Distance(Å)	Clash(Å)
1:A:53:LYS:O	1:A:103:TYR:HA	2.18	0.43
1:A:247:LEU:C	1:A:249:LYS:H	2.21	0.43
1:A:56:SER:HB3	1:A:57:ARG:H	1.58	0.43
1:A:259:ILE:H	1:A:259:ILE:HG12	1.66	0.43
1:A:72:LEU:CD1	1:A:344:GLU:HB2	2.47	0.43
1:A:252:SER:OG	1:A:255:ALA:CB	2.67	0.43
1:A:32:SER:HG	1:A:37:SER:HG	1.67	0.43
1:A:290:VAL:O	1:A:296:ARG:NH1	2.39	0.42
1:A:13:LEU:HG	1:A:29:PRO:HG3	2.01	0.42
1:A:127:VAL:HG23	1:A:127:VAL:O	2.19	0.42
1:A:166:ILE:HG22	1:A:167:LEU:N	2.34	0.42
1:A:232:LEU:O	1:A:232:LEU:HD12	2.18	0.42
1:A:108:LEU:HD12	2:A:391:B96:O47	2.20	0.42
1:A:108:LEU:HD12	2:A:391:B96:C48	2.50	0.42
1:A:193:ILE:O	1:A:193:ILE:HG22	2.20	0.42
1:A:46:THR:OG1	1:A:48:LEU:CG	2.67	0.42
1:A:250:ILE:HB	1:A:256:ARG:HG3	2.01	0.42
1:A:327:PHE:HA	1:A:330:ARG:NH1	2.35	0.42
1:A:191:PRO:C	1:A:193:ILE:H	2.22	0.41
1:A:193:ILE:HG23	1:A:200:TYR:HE1	1.84	0.41
1:A:201:ASN:OD1	1:A:293:SER:HB2	2.20	0.41
1:A:141:ILE:HD12	1:A:146:ILE:HB	2.02	0.41
1:A:32:SER:OG	1:A:37:SER:OG	2.37	0.41
1:A:127:VAL:O	1:A:131:ILE:HG12	2.21	0.41
1:A:5:ARG:CG	1:A:5:ARG:HH11	2.33	0.41
1:A:30:VAL:HG11	1:A:40:ALA:HB2	2.03	0.41
1:A:159:ASN:OD1	1:A:163:GLU:HB2	2.20	0.41
1:A:5:ARG:HA	1:A:6:PRO:HD2	1.86	0.41
1:A:193:ILE:HG12	1:A:200:TYR:CE1	2.53	0.41
1:A:229:ILE:HG23	1:A:258:TYR:CZ	2.54	0.41
1:A:192:GLU:C	1:A:193:ILE:HG13	2.41	0.41
1:A:112:ASP:OD2	1:A:112:ASP:C	2.58	0.41
1:A:12:GLU:HA	1:A:16:THR:O	2.21	0.41
1:A:227:ASP:N	1:A:227:ASP:OD1	2.53	0.41
1:A:60:GLN:HE21	1:A:60:GLN:HB2	1.70	0.41
1:A:91:THR:OG1	1:A:92:PRO:CD	2.69	0.41
1:A:197:TRP:NE1	1:A:199:HIS:CE1	2.72	0.40
1:A:269:ASN:HB3	1:A:272:ASN:ND2	2.35	0.40
1:A:167:LEU:HB2	2:A:391:B96:O1	2.22	0.40

There are no symmetry-related clashes.

5.3 Torsion angles

5.3.1 Protein backbone ⓘ

In the following table, the Percentiles column shows the percent Ramachandran outliers of the chain as a percentile score with respect to all X-ray entries followed by that with respect to entries of similar resolution. The Analysed column shows the number of residues for which the backbone conformation was analysed, and the total number of residues.

Mol	Chain	Analysed	Favoured	Allowed	Outliers	Percentiles
1	A	319/360 (89%)	270 (85%)	37 (12%)	12 (4%)	5 15

All (12) Ramachandran outliers are listed below:

Mol	Chain	Res	Type
1	A	35	TYR
1	A	37	SER
1	A	56	SER
1	A	113	LEU
1	A	192	GLU
1	A	110	GLY
1	A	26	ASN
1	A	95	SER
1	A	242	PRO
1	A	196	ASN
1	A	58	PRO
1	A	193	ILE

5.3.2 Protein sidechains ⓘ

In the following table, the Percentiles column shows the percent sidechain outliers of the chain as a percentile score with respect to all X-ray entries followed by that with respect to entries of similar resolution. The Analysed column shows the number of residues for which the sidechain conformation was analysed, and the total number of residues.

Mol	Chain	Analysed	Rotameric	Outliers	Percentiles
1	A	286/320 (89%)	217 (76%)	69 (24%)	1 3

All (69) residues with a non-rotameric sidechain are listed below:

Mol	Chain	Res	Type
1	A	5	ARG
1	A	11	GLN

Continued on next page...

Continued from previous page...

Mol	Chain	Res	Type
1	A	12	GLU
1	A	13	LEU
1	A	16	THR
1	A	17	ILE
1	A	22	GLU
1	A	37	SER
1	A	39	CYS
1	A	44	THR
1	A	45	LYS
1	A	48	LEU
1	A	49	ARG
1	A	56	SER
1	A	59	PHE
1	A	60	GLN
1	A	64	HIS
1	A	72	LEU
1	A	73	ARG
1	A	74	LEU
1	A	75	LEU
1	A	76	LYS
1	A	81	GLU
1	A	86	LEU
1	A	87	LEU
1	A	89	VAL
1	A	94	ARG
1	A	96	LEU
1	A	101	ASP
1	A	114	ASN
1	A	128	GLN
1	A	130	LEU
1	A	136	ARG
1	A	138	LEU
1	A	141	ILE
1	A	150	ASP
1	A	151	LEU
1	A	152	LYS
1	A	154	SER
1	A	162	CYS
1	A	164	LEU
1	A	169	PHE
1	A	186	ARG
1	A	189	ARG

Continued on next page...

Continued from previous page...

Mol	Chain	Res	Type
1	A	195	LEU
1	A	198	MET
1	A	199	HIS
1	A	200	TYR
1	A	220	ARG
1	A	222	LEU
1	A	226	THR
1	A	227	ASP
1	A	228	HIS
1	A	229	ILE
1	A	232	LEU
1	A	248	LYS
1	A	249	LYS
1	A	254	SER
1	A	259	ILE
1	A	260	GLN
1	A	261	SER
1	A	272	ASN
1	A	275	ILE
1	A	290	VAL
1	A	330	ARG
1	A	331	ASP
1	A	333	LEU
1	A	338	LYS
1	A	346	ILE

Some sidechains can be flipped to improve hydrogen bonding and reduce clashes. All (8) such sidechains are listed below:

Mol	Chain	Res	Type
1	A	60	GLN
1	A	64	HIS
1	A	80	HIS
1	A	114	ASN
1	A	148	HIS
1	A	155	ASN
1	A	257	ASN
1	A	272	ASN

5.3.3 RNA ⓘ

There are no RNA chains in this entry.

5.4 Non-standard residues in protein, DNA, RNA chains ⓘ

There are no non-standard protein/DNA/RNA residues in this entry.

5.5 Carbohydrates ⓘ

There are no carbohydrates in this entry.

5.6 Ligand geometry ⓘ

1 ligand is modelled in this entry.

In the following table, the Counts columns list the number of bonds (or angles) for which Mogul statistics could be retrieved, the number of bonds (or angles) that are observed in the model and the number of bonds (or angles) that are defined in the chemical component dictionary. The Link column lists molecule types, if any, to which the group is linked. The Z score for a bond length (or angle) is the number of standard deviations the observed value is removed from the expected value. A bond length (or angle) with $|Z| > 2$ is considered an outlier worth inspection. RMSZ is the root-mean-square of all Z scores of the bond lengths (or angles).

Mol	Type	Chain	Res	Link	Bond lengths			Bond angles		
					Counts	RMSZ	$\# Z > 2$	Counts	RMSZ	$\# Z > 2$
2	B96	A	391	-	43,43,43	2.76	14 (32%)	61,61,61	2.64	11 (18%)

In the following table, the Chirals column lists the number of chiral outliers, the number of chiral centers analysed, the number of these observed in the model and the number defined in the chemical component dictionary. Similar counts are reported in the Torsion and Rings columns. '-' means no outliers of that kind were identified.

Mol	Type	Chain	Res	Link	Chirals	Torsions	Rings
2	B96	A	391	-	-	0/22/32/32	0/3/5/5

All (14) bond length outliers are listed below:

Mol	Chain	Res	Type	Atoms	Z	Observed(Å)	Ideal(Å)
2	A	391	B96	C16-C13	-13.19	1.32	1.52
2	A	391	B96	C10-N11	-5.73	1.31	1.36
2	A	391	B96	C15-N11	-4.62	1.34	1.43
2	A	391	B96	C3-C4	-3.64	1.36	1.43
2	A	391	B96	C5-C4	-3.31	1.37	1.43
2	A	391	B96	C14-C13	-3.30	1.35	1.39
2	A	391	B96	C3-N2	-2.95	1.32	1.41
2	A	391	B96	C10-N9	-2.80	1.33	1.39

Continued on next page...

Continued from previous page...

Mol	Chain	Res	Type	Atoms	Z	Observed(Å)	Ideal(Å)
2	A	391	B96	C20-C15	-2.74	1.33	1.38
2	A	391	B96	C1-N2	-2.46	1.32	1.37
2	A	391	B96	C32-C31	2.35	1.42	1.36
2	A	391	B96	C1-N9	-2.09	1.33	1.37
2	A	391	B96	C6-C5	-2.03	1.36	1.42
2	A	391	B96	O41-C6	-2.03	1.30	1.36

All (11) bond angle outliers are listed below:

Mol	Chain	Res	Type	Atoms	Z	Observed(°)	Ideal(°)
2	A	391	B96	C14-C10-N11	13.70	108.77	106.68
2	A	391	B96	C15-N11-N12	8.22	125.21	118.85
2	A	391	B96	C48-C49-N44	5.39	117.92	110.04
2	A	391	B96	C16-C13-N12	4.71	125.58	120.64
2	A	391	B96	C14-C13-C16	-3.79	124.29	128.94
2	A	391	B96	C46-C45-N44	3.57	115.27	110.04
2	A	391	B96	N9-C10-N11	3.50	124.57	120.99
2	A	391	B96	N9-C1-N2	3.45	118.06	112.57
2	A	391	B96	C17-C16-C13	2.30	114.74	109.88
2	A	391	B96	O1-C1-N2	-2.26	119.73	123.54
2	A	391	B96	C43-N44-C49	-2.17	105.72	111.32

There are no chirality outliers.

There are no torsion outliers.

There are no ring outliers.

5.7 Other polymers ⓘ

There are no such residues in this entry.

5.8 Polymer linkage issues

There are no chain breaks in this entry.

6 Fit of model and data ⓘ

6.1 Protein, DNA and RNA chains ⓘ

EDS was not executed - this section will therefore be empty.

6.2 Non-standard residues in protein, DNA, RNA chains ⓘ

EDS was not executed - this section will therefore be empty.

6.3 Carbohydrates ⓘ

EDS was not executed - this section will therefore be empty.

6.4 Ligands ⓘ

EDS was not executed - this section will therefore be empty.

6.5 Other polymers ⓘ

EDS was not executed - this section will therefore be empty.