



Full wwPDB X-ray Structure Validation Report

Mar 1, 2014 – 02:12 AM GMT

PDB ID : 3KZL
Title : Crystal structure of BA2930 mutant (H183G) in complex with AcCoA
Authors : Klimecka, M.M.; Chruszcz, M.; Porebski, P.J.; Cymborowski, M.; Anderson, W.F.; Minor, W.
Deposited on : 2009-12-08
Resolution : 2.10 Å(reported)

This is a full wwPDB validation report for a publicly released PDB entry.
We welcome your comments at validation@mail.wwpdb.org
A user guide is available at <http://wwpdb.org/ValidationPDFNotes.html>

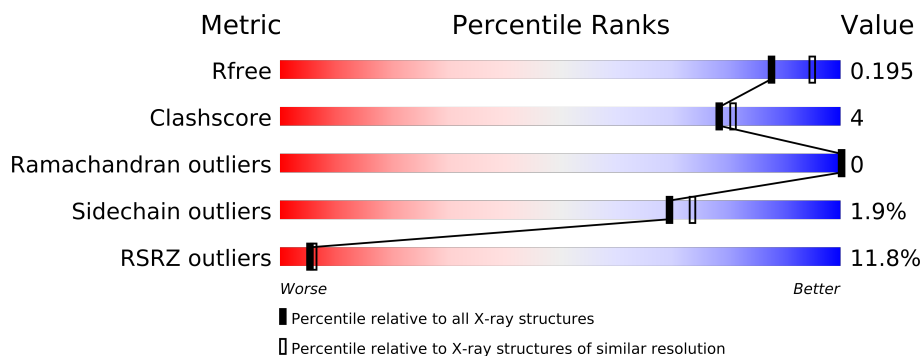
The following versions of software and data (see [references](#)) were used in the production of this report:

MolProbity : 4.02b-467
Mogul : 1.15 2013
Xtriage (Phenix) : dev-1323
EDS : stable22639
Percentile statistics : 21963
Refmac : 5.8.0049
CCP4 : 6.3.0 (Settle)
Ideal geometry (proteins) : Engh & Huber (2001)
Ideal geometry (DNA, RNA) : Parkinson et. al. (1996)
Validation Pipeline (wwPDB-VP) : stable22683

1 Overall quality at a glance

The reported resolution of this entry is 2.10 Å.

Percentile scores (ranging between 0-100) for global validation metrics of the entry are shown in the following graphic. The table shows the number of entries on which the scores are based.



Metric	Whole archive (#Entries)	Similar resolution (#Entries, resolution range(Å))
R_{free}	66092	3012 (2.10-2.10)
Clashscore	79885	3649 (2.10-2.10)
Ramachandran outliers	78287	3610 (2.10-2.10)
Sidechain outliers	78261	3611 (2.10-2.10)
RSRZ outliers	66119	3013 (2.10-2.10)

The table below summarises the geometric issues observed across the polymeric chains and their fit to the electron density. The red, orange, yellow and green segments on the lower bar indicate the fraction of residues that contain outliers for ≥ 3 , 2, 1 and 0 types of geometric quality criteria. The upper red bar (where present) indicates the fraction of residues that have poor fit to the electron density.

Mol	Chain	Length	Quality of chain
1	A	268	
1	B	268	
1	C	268	
1	D	268	

The following table lists non-polymeric compounds that are outliers for geometric or electron-density-fit criteria:

Mol	Type	Chain	Res	Geometry	Electron density
5	EPE	B	267	-	X

2 Entry composition

There are 6 unique types of molecules in this entry. The entry contains 8859 atoms, of which 0 are hydrogen and 0 are deuterium.

In the tables below, the ZeroOcc column contains the number of atoms modelled with zero occupancy, the AltConf column contains the number of residues with at least one atom in alternate conformation and the Trace column contains the number of residues modelled with at most 2 atoms.

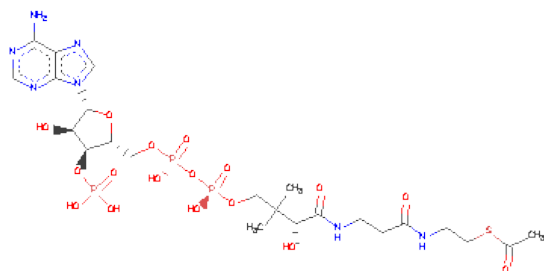
- Molecule 1 is a protein called Aminoglycoside N3-acetyltransferase.

Mol	Chain	Residues	Atoms						ZeroOcc	AltConf	Trace
1	A	266	Total	C	N	O	S	Se	0	1	0
			2024	1284	346	382	3	9			
1	D	266	Total	C	N	O	S	Se	0	0	0
			2060	1305	350	393	3	9			
1	C	264	Total	C	N	O	S	Se	0	0	0
			2017	1281	341	383	3	9			
1	B	266	Total	C	N	O	S	Se	0	2	0
			2071	1311	358	390	3	9			

There are 16 discrepancies between the modelled and reference sequences:

Chain	Residue	Modelled	Actual	Comment	Reference
A	-2	SER	-	EXPRESSION TAG	UNP Q81P86
A	-1	ASN	-	EXPRESSION TAG	UNP Q81P86
A	0	ALA	-	EXPRESSION TAG	UNP Q81P86
A	183	GLY	HIS	ENGINEERED	UNP Q81P86
D	-2	SER	-	EXPRESSION TAG	UNP Q81P86
D	-1	ASN	-	EXPRESSION TAG	UNP Q81P86
D	0	ALA	-	EXPRESSION TAG	UNP Q81P86
D	183	GLY	HIS	ENGINEERED	UNP Q81P86
C	-2	SER	-	EXPRESSION TAG	UNP Q81P86
C	-1	ASN	-	EXPRESSION TAG	UNP Q81P86
C	0	ALA	-	EXPRESSION TAG	UNP Q81P86
C	183	GLY	HIS	ENGINEERED	UNP Q81P86
B	-2	SER	-	EXPRESSION TAG	UNP Q81P86
B	-1	ASN	-	EXPRESSION TAG	UNP Q81P86
B	0	ALA	-	EXPRESSION TAG	UNP Q81P86
B	183	GLY	HIS	ENGINEERED	UNP Q81P86

- Molecule 2 is ACETYL COENZYME *A (three-letter code: ACO) (formula: C₂₃H₃₈N₇O₁₇P₃S).



Mol	Chain	Residues	Atoms						ZeroOcc	AltConf
2	A	1	Total 51	C 23	N 7	O 17	P 3	S 1	0	0
2	D	1	Total 51	C 23	N 7	O 17	P 3	S 1	0	0
2	C	1	Total 51	C 23	N 7	O 17	P 3	S 1	0	0
2	B	1	Total 51	C 23	N 7	O 17	P 3	S 1	0	0

- Molecule 3 is CHLORIDE ION (three-letter code: CL) (formula: Cl).

Mol	Chain	Residues	Atoms		ZeroOcc	AltConf
3	B	3	Total	Cl	0	0
			3	3		
3	A	1	Total	Cl	0	0
			1	1		
3	D	3	Total	Cl	0	0
			3	3		
3	C	4	Total	Cl	0	0
			4	4		

- Molecule 4 is MAGNESIUM ION (three-letter code: MG) (formula: Mg).

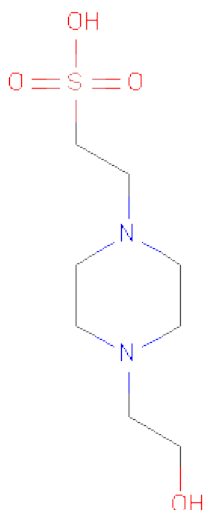
Mol	Chain	Residues	Atoms		ZeroOcc	AltConf
4	B	1	Total	Mg	0	0
			1	1		

Continued on next page...

Continued from previous page...

Mol	Chain	Residues	Atoms		ZeroOcc	AltConf
4	D	1	Total	Mg	0	0
			1	1		

- Molecule 5 is 4-(2-HYDROXYETHYL)-1-PIPERAZINEETHANESULFONIC ACID (three-letter code: EPE) (formula: C₈H₁₈N₂O₄S).



Mol	Chain	Residues	Atoms					ZeroOcc	AltConf
5	B	1	Total	C	N	O	S	0	0
			15	8	2	4	1		

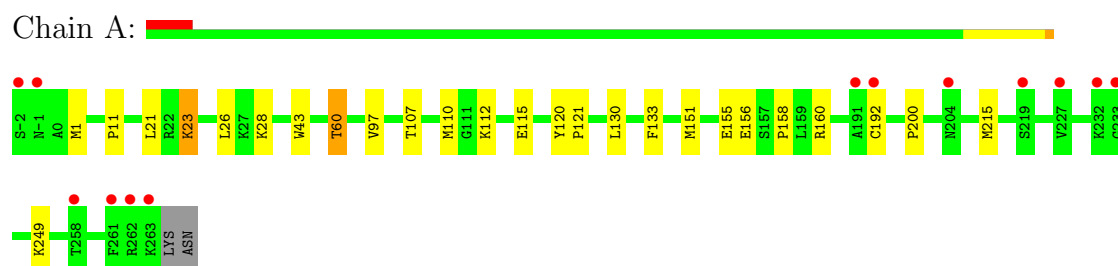
- Molecule 6 is water.

Mol	Chain	Residues	Atoms		ZeroOcc	AltConf
6	A	98	Total	O	0	0
			98	98		
6	D	126	Total	O	0	0
			126	126		
6	C	102	Total	O	0	0
			102	102		
6	B	129	Total	O	0	0
			129	129		

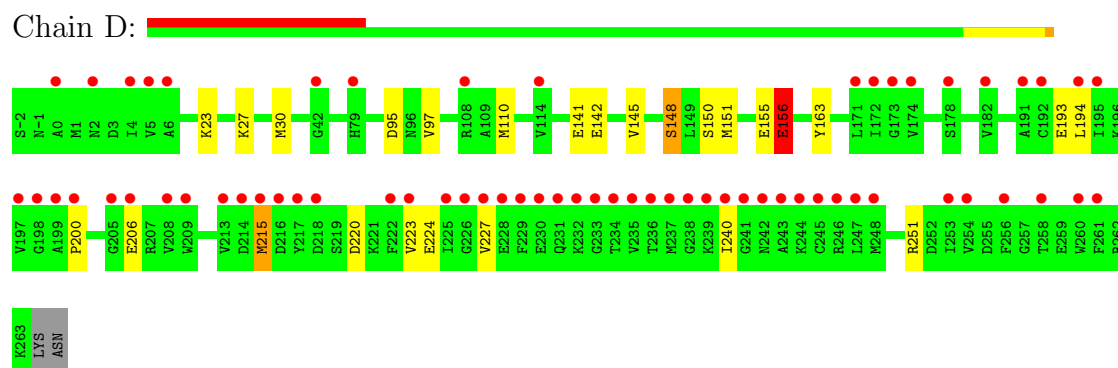
3 Residue-property plots

These plots are drawn for all protein, RNA and DNA chains in the entry. The first graphic for a chain summarises the proportions of errors displayed in the second graphic. The second graphic shows the sequence view annotated by issues in geometry and electron density. Residues are color-coded according to the number of geometric quality criteria for which they contain at least one outlier: green = 0, yellow = 1, orange = 2 and red = 3 or more. A red dot above a residue indicates a poor fit to the electron density ($RSRZ > 2$). Stretches of 2 or more consecutive residues without any outlier are shown as a green connector. Residues present in the sample, but not in the model, are shown in grey.

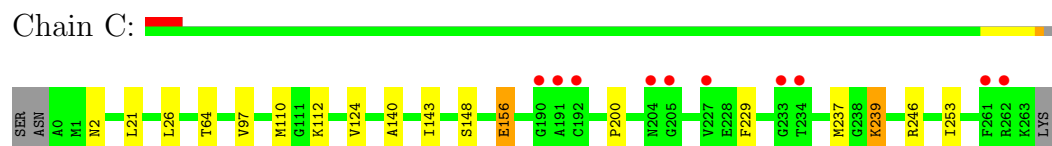
- Molecule 1: Aminoglycoside N3-acetyltransferase



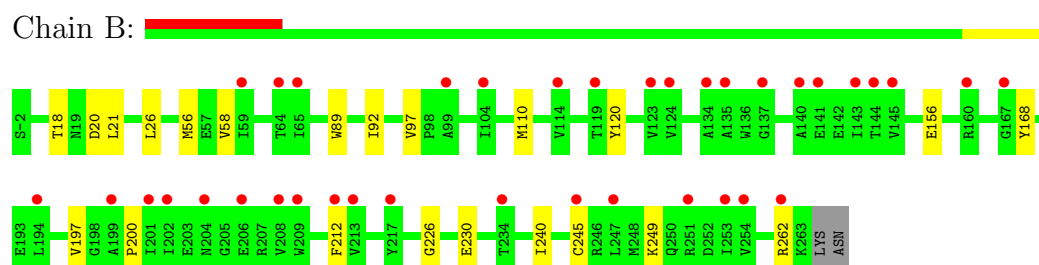
- Molecule 1: Aminoglycoside N3-acetyltransferase



- Molecule 1: Aminoglycoside N3-acetyltransferase



- Molecule 1: Aminoglycoside N3-acetyltransferase



4 Data and refinement statistics

Property	Value	Source
Space group	P 1 21 1	Depositor
Cell constants a, b, c, α , β , γ	71.83Å 109.18Å 73.72Å 90.00° 111.91° 90.00°	Depositor
Resolution (Å)	34.57 – 2.10 40.46 – 2.15	Depositor EDS
% Data completeness (in resolution range)	98.8 (34.57-2.10) 91.3 (40.46-2.15)	Depositor EDS
R_{merge}	0.12	Depositor
R_{sym}	0.12	Depositor
$\langle I/\sigma(I) \rangle$ ¹	3.14 (at 2.16Å)	Xtriage
Refinement program	REFMAC 5.5.0072, COOT	Depositor
R, R_{free}	0.180 , 0.232 0.193 , 0.195	Depositor DCC
R_{free} test set	2664 reflections (5.36%)	DCC
Wilson B-factor (Å ²)	24.7	Xtriage
Anisotropy	0.099	Xtriage
Bulk solvent k_{sol} (e/Å ³), B_{sol} (Å ²)	0.35 , 19.6	EDS
Estimated twinning fraction	0.006 for l,-k,h	Xtriage
L-test for twinning	$\langle L \rangle = 0.50$, $\langle L^2 \rangle = 0.33$	Xtriage
Outliers	0 of 52344 reflections	Xtriage
F_o, F_c correlation	0.90	EDS
Total number of atoms	8859	wwPDB-VP
Average B, all atoms (Å ²)	17.0	wwPDB-VP

Xtriage's analysis on translational NCS is as follows: *The analyses of the Patterson function reveals a significant off-origin peak that is 52.45 % of the origin peak, indicating pseudo translational symmetry. The chance of finding a peak of this or larger height randomly in a structure without pseudo translational symmetry is equal to 4.8533e-05. The detected translational NCS is most likely also responsible for the elevated intensity ratio.*

¹Intensities estimated from amplitudes.

5 Model quality

5.1 Standard geometry

Bond lengths and bond angles in the following residue types are not validated in this section: MG, EPE, ACO, CL

The Z score for a bond length (or angle) is the number of standard deviations the observed value is removed from the expected value. A bond length (or angle) with $|Z| > 5$ is considered an outlier worth inspection. RMSZ is the root-mean-square of all Z scores of the bond lengths (or angles).

Mol	Chain	Bond lengths		Bond angles	
		RMSZ	$\# Z > 5$	RMSZ	$\# Z > 5$
1	A	0.63	0/2060	0.68	0/2790
1	B	0.68	0/2108	0.71	0/2845
1	C	0.65	0/2052	0.71	0/2776
1	D	0.69	1/2095 (0.0%)	0.72	1/2828 (0.0%)
All	All	0.66	1/8315 (0.0%)	0.70	1/11239 (0.0%)

All (1) bond length outliers are listed below:

Mol	Chain	Res	Type	Atoms	Z	Observed(Å)	Ideal(Å)
1	D	156	GLU	CB-CG	5.31	1.62	1.52

All (1) bond angle outliers are listed below:

Mol	Chain	Res	Type	Atoms	Z	Observed(°)	Ideal(°)
1	D	95	ASP	CB-CG-OD1	5.01	122.81	118.30

There are no chirality outliers.

There are no planarity outliers.

5.2 Close contacts

In the following table, the Non-H and H(model) columns list the number of non-hydrogen atoms and hydrogen atoms in the chain respectively. The H(added) column lists the number of hydrogens added by MolProbity. The Clashes column lists the number of clashes within the asymmetric unit, and the number in parentheses is this value normalized per 1000 atoms of the molecule in the chain. The Symm-Clashes column gives symmetry related clashes, in the same way as for the Clashes column.

Mol	Chain	Non-H	H(model)	H(added)	Clashes	Symm-Clashes
1	A	2024	0	1960	18	0
1	B	2071	0	2053	21	0
1	C	2017	0	1968	11	0
1	D	2060	0	2043	12	0
2	A	51	0	34	2	0
2	B	51	0	34	1	0
2	C	51	0	34	1	0
2	D	51	0	34	1	0
3	A	1	0	0	0	0
3	B	3	0	0	0	0
3	C	4	0	0	0	0
3	D	3	0	0	0	0
4	B	1	0	0	0	0
4	D	1	0	0	0	0
5	B	15	0	17	0	0
6	A	98	0	0	2	0
6	B	129	0	0	0	0
6	C	102	0	0	1	0
6	D	126	0	0	0	0
All	All	8859	0	8177	60	0

Clashscore is defined as the number of clashes calculated for the entry per 1000 atoms (including hydrogens) of the entry. The overall clashscore for this entry is 4.

All (60) close contacts within the same asymmetric unit are listed below.

Atom-1	Atom-2	Distance(Å)	Clash(Å)
1:D:151:MSE:HE1	1:D:215:MSE:HG3	1.51	0.91
1:B:110:MSE:HE1	2:B:266:ACO:H22	1.61	0.81
1:A:110:MSE:HE1	2:A:266:ACO:H22	1.68	0.74
1:D:110:MSE:HE1	2:D:266:ACO:H22	1.70	0.74
1:D:97:VAL:HG13	1:D:200:PRO:HG3	1.72	0.71
1:C:110:MSE:HE1	2:C:266:ACO:H22	1.71	0.71
1:A:97:VAL:HG13	1:A:200:PRO:HG3	1.74	0.69
1:C:237:MSE:HE3	1:C:246:ARG:HG2	1.76	0.66
1:A:21:LEU:HD22	1:A:26:LEU:HD22	1.78	0.65
1:B:262[B]:ARG:HB3	1:B:262[B]:ARG:NH1	2.12	0.65
1:D:194:LEU:HD23	1:D:215:MSE:HG2	1.78	0.64
1:B:186:GLU:OE2	1:B:192:CYS:SG	2.56	0.64
1:B:20:ASP:HB3	1:B:240:ILE:HD13	1.78	0.64
1:B:97:VAL:HG13	1:B:200:PRO:HG3	1.87	0.57
1:B:21:LEU:HD22	1:B:26:LEU:HD22	1.85	0.57
1:D:148:SER:OG	1:D:150:SER:O	2.26	0.54
1:B:240:ILE:HG12	1:B:245:CYS:SG	2.48	0.54

Continued on next page...

Continued from previous page...

Atom-1	Atom-2	Distance(Å)	Clash(Å)
1:D:155:GLU:O	1:D:156:GLU:OE2	2.24	0.54
1:A:249:LYS:NZ	6:A:527:HOH:O	2.43	0.51
1:C:21:LEU:HD22	1:C:26:LEU:HD22	1.93	0.51
1:D:193:GLU:HG2	1:D:194:LEU:N	2.26	0.50
1:A:155:GLU:OE1	1:A:160:ARG:NH1	2.44	0.49
1:D:163:TYR:CE1	1:D:251:ARG:HG2	2.48	0.49
1:C:237:MSE:HE3	1:C:246:ARG:CG	2.43	0.48
1:C:97:VAL:HG13	1:C:200:PRO:HG3	1.95	0.48
1:A:1:MSE:HE1	1:A:43:TRP:CD1	2.49	0.48
1:A:151:MSE:HE1	1:A:215:MSE:HB2	1.97	0.47
1:C:239:LYS:NZ	6:C:600:HOH:O	2.47	0.47
1:C:148:SER:HB3	1:C:156:GLU:HG3	1.97	0.47
1:A:23:LYS:HE3	1:A:23:LYS:HB2	1.57	0.46
1:B:20:ASP:HB3	1:B:240:ILE:CD1	2.45	0.46
1:A:120:TYR:CD2	1:A:121:PRO:HD2	2.51	0.46
1:A:133:PHE:CD2	1:A:158:PRO:HG2	2.50	0.46
1:C:64:THR:HG21	1:C:143:ILE:HD12	1.98	0.45
1:A:112:LYS:HD3	2:A:266:ACO:H51A	1.96	0.45
1:D:141:GLU:O	1:D:145:VAL:HB	2.17	0.45
1:A:192:CYS:O	1:A:215:MSE:HE2	2.16	0.45
1:B:168:TYR:CZ	1:B:249:LYS:HD3	2.52	0.45
1:C:237:MSE:HE2	1:C:237:MSE:HB3	1.79	0.44
1:A:11:PRO:HG2	1:B:92:ILE:HG21	2.00	0.44
1:B:197:VAL:CG2	1:B:212:PHE:CE1	3.01	0.43
1:A:28:LYS:HG3	1:A:60:THR:CG2	2.48	0.43
1:B:26:LEU:HB3	1:B:58:VAL:HG11	2.01	0.43
1:B:18:THR:HG23	1:B:58:VAL:CG2	2.49	0.42
1:D:223:VAL:O	1:D:227:VAL:HG23	2.20	0.42
1:A:107:THR:OG1	1:A:115:GLU:OE2	2.33	0.42
1:B:197:VAL:HG21	1:B:212:PHE:CE1	2.54	0.42
1:C:229:PHE:CD2	1:C:253:ILE:HD13	2.53	0.42
1:B:226:GLY:O	1:B:230:GLU:HG3	2.20	0.42
1:A:11:PRO:HD3	1:B:89:TRP:CD2	2.55	0.42
1:B:262[B]:ARG:HB3	1:B:262[B]:ARG:HH11	1.85	0.41
1:B:262[B]:ARG:CZ	1:B:262[B]:ARG:CB	2.98	0.41
1:B:262[B]:ARG:HB3	1:B:262[B]:ARG:CZ	2.50	0.41
1:A:112:LYS:HE3	6:A:287:HOH:O	2.21	0.41
1:A:1:MSE:HE1	1:A:43:TRP:HD1	1.84	0.41
1:B:168:TYR:CE1	1:B:249:LYS:HD3	2.56	0.41
1:C:124:VAL:HG22	1:C:140:ALA:HB1	2.03	0.41
1:B:56:MSE:HE1	1:B:120:TYR:CD1	2.56	0.40
1:D:23:LYS:HE2	1:D:23:LYS:HB3	1.89	0.40

Continued on next page...

Continued from previous page...

Atom-1	Atom-2	Distance(Å)	Clash(Å)
1:D:27:LYS:HB2	1:D:30:MSE:HE3	2.03	0.40

There are no symmetry-related clashes.

5.3 Torsion angles

5.3.1 Protein backbone ⓘ

In the following table, the Percentiles column shows the percent Ramachandran outliers of the chain as a percentile score with respect to all X-ray entries followed by that with respect to entries of similar resolution. The Analysed column shows the number of residues for which the backbone conformation was analysed, and the total number of residues.

Mol	Chain	Analysed	Favoured	Allowed	Outliers	Percentiles	
1	A	265/268 (99%)	256 (97%)	9 (3%)	0	100	100
1	B	266/268 (99%)	259 (97%)	7 (3%)	0	100	100
1	C	262/268 (98%)	254 (97%)	8 (3%)	0	100	100
1	D	264/268 (98%)	257 (97%)	7 (3%)	0	100	100
All	All	1057/1072 (99%)	1026 (97%)	31 (3%)	0	100	100

There are no Ramachandran outliers to report.

5.3.2 Protein sidechains ⓘ

In the following table, the Percentiles column shows the percent sidechain outliers of the chain as a percentile score with respect to all X-ray entries followed by that with respect to entries of similar resolution. The Analysed column shows the number of residues for which the sidechain conformation was analysed, and the total number of residues.

Mol	Chain	Analysed	Rotameric	Outliers	Percentiles	
1	A	216/224 (96%)	212 (98%)	4 (2%)	69	73
1	B	227/224 (101%)	226 (100%)	1 (0%)	95	97
1	C	217/224 (97%)	213 (98%)	4 (2%)	71	75
1	D	228/224 (102%)	220 (96%)	8 (4%)	48	48
All	All	888/896 (99%)	871 (98%)	17 (2%)	69	73

All (17) residues with a non-rotameric sidechain are listed below:

Mol	Chain	Res	Type
1	A	23	LYS
1	A	60	THR
1	A	130	LEU
1	A	156	GLU
1	D	142	GLU
1	D	148	SER
1	D	156	GLU
1	D	206	GLU
1	D	215	MSE
1	D	220	ASP
1	D	224	GLU
1	D	240	ILE
1	C	2	ASN
1	C	112	LYS
1	C	156	GLU
1	C	239	LYS
1	B	156	GLU

Some sidechains can be flipped to improve hydrogen bonding and reduce clashes. There are no such sidechains identified.

5.3.3 RNA ⓘ

There are no RNA chains in this entry.

5.4 Non-standard residues in protein, DNA, RNA chains ⓘ

There are no non-standard protein/DNA/RNA residues in this entry.

5.5 Carbohydrates ⓘ

There are no carbohydrates in this entry.

5.6 Ligand geometry ⓘ

Of 18 ligands modelled in this entry, 13 are monoatomic - leaving 5 for Mogul analysis.

In the following table, the Counts columns list the number of bonds (or angles) for which Mogul statistics could be retrieved, the number of bonds (or angles) that are observed in the model and the number of bonds (or angles) that are defined in the chemical component dictionary. The Link column lists molecule types, if any, to which the group is linked. The Z score for a bond length

(or angle) is the number of standard deviations the observed value is removed from the expected value. A bond length (or angle) with $|Z| > 2$ is considered an outlier worth inspection. RMSZ is the root-mean-square of all Z scores of the bond lengths (or angles).

Mol	Type	Chain	Res	Link	Bond lengths			Bond angles		
					Counts	RMSZ	$\# Z > 2$	Counts	RMSZ	$\# Z > 2$
2	ACO	A	266	-	53,53,53	1.11	4 (7%)	79,79,79	2.50	14 (17%)
2	ACO	B	266	-	53,53,53	0.90	2 (3%)	79,79,79	1.57	8 (10%)
5	EPE	B	267	-	15,15,15	0.91	1 (6%)	20,20,20	1.30	2 (10%)
2	ACO	C	266	-	53,53,53	1.01	3 (5%)	79,79,79	2.53	17 (21%)
2	ACO	D	266	-	53,53,53	1.08	4 (7%)	79,79,79	2.35	18 (22%)

In the following table, the Chirals column lists the number of chiral outliers, the number of chiral centers analysed, the number of these observed in the model and the number defined in the chemical component dictionary. Similar counts are reported in the Torsion and Rings columns. '-' means no outliers of that kind were identified.

Mol	Type	Chain	Res	Link	Chirals	Torsions	Rings
2	ACO	A	266	-	-	0/51/67/67	0/1/3/3
2	ACO	B	266	-	-	0/51/67/67	0/1/3/3
5	EPE	B	267	-	-	0/9/19/19	0/1/1/1
2	ACO	C	266	-	-	0/51/67/67	0/1/3/3
2	ACO	D	266	-	-	0/51/67/67	0/1/3/3

All (14) bond length outliers are listed below:

Mol	Chain	Res	Type	Atoms	Z	Observed(Å)	Ideal(Å)
2	A	266	ACO	C4A-N9A	-3.92	1.32	1.37
2	C	266	ACO	C4A-N9A	-3.56	1.32	1.37
2	D	266	ACO	C4A-N9A	-3.35	1.32	1.37
5	B	267	EPE	C10-S	3.06	1.82	1.77
2	A	266	ACO	C5A-C4A	3.04	1.47	1.40
2	B	266	ACO	C4A-N9A	-2.82	1.33	1.37
2	D	266	ACO	CDP-CBP	-2.81	1.47	1.53
2	C	266	ACO	CBP-CAP	2.59	1.58	1.55
2	B	266	ACO	C5A-C4A	2.46	1.46	1.40
2	D	266	ACO	C5A-C4A	2.40	1.45	1.40
2	D	266	ACO	CBP-CAP	2.39	1.58	1.55
2	A	266	ACO	CBP-CAP	2.37	1.58	1.55
2	C	266	ACO	C5A-C4A	2.24	1.45	1.40
2	A	266	ACO	C5A-N7A	-2.10	1.32	1.40

All (59) bond angle outliers are listed below:

Mol	Chain	Res	Type	Atoms	Z	Observed(°)	Ideal(°)
2	C	266	ACO	CEP-CBP-CDP	10.17	123.56	109.08
2	C	266	ACO	CDP-CBP-CAP	-9.37	92.58	108.82
2	A	266	ACO	CDP-CBP-CAP	-8.93	93.33	108.82
2	A	266	ACO	CEP-CBP-CDP	8.75	121.53	109.08
2	A	266	ACO	CEP-CBP-CAP	-7.91	95.11	108.82
2	D	266	ACO	N3A-C2A-N1A	-7.72	122.25	128.71
2	C	266	ACO	CEP-CBP-CAP	-7.15	96.43	108.82
2	C	266	ACO	N3A-C2A-N1A	-7.04	122.82	128.71
2	A	266	ACO	CEP-CBP-CCP	6.92	118.73	108.76
2	D	266	ACO	CDP-CBP-CCP	6.90	118.70	108.76
2	D	266	ACO	CEP-CBP-CDP	6.56	118.42	109.08
2	A	266	ACO	CCP-CBP-CAP	-6.43	99.30	108.70
2	D	266	ACO	CDP-CBP-CAP	-6.36	97.80	108.82
2	B	266	ACO	N3A-C2A-N1A	-6.09	123.61	128.71
2	C	266	ACO	CDP-CBP-CCP	5.84	117.18	108.76
2	D	266	ACO	CCP-CBP-CAP	-5.74	100.31	108.70
2	B	266	ACO	N3A-C4A-N9A	5.46	135.30	125.43
2	A	266	ACO	CDP-CBP-CCP	5.46	116.63	108.76
2	A	266	ACO	N3A-C2A-N1A	-5.40	124.20	128.71
2	A	266	ACO	N3A-C4A-N9A	5.01	134.47	125.43
2	D	266	ACO	N3A-C4A-N9A	4.97	134.41	125.43
2	C	266	ACO	CCP-CBP-CAP	-4.75	101.75	108.70
2	C	266	ACO	N3A-C4A-N9A	4.60	133.73	125.43
2	C	266	ACO	CEP-CBP-CCP	4.41	115.12	108.76
2	D	266	ACO	C8A-N9A-C4A	4.21	110.11	106.90
2	D	266	ACO	CBP-CAP-C9P	4.17	116.77	112.73
2	C	266	ACO	C8A-N9A-C4A	4.07	110.00	106.90
5	B	267	EPE	O2S-S-C10	4.05	110.28	106.81
2	D	266	ACO	CEP-CBP-CAP	-4.04	101.81	108.82
2	D	266	ACO	O6A-CCP-CBP	3.78	116.90	110.57
2	D	266	ACO	CEP-CBP-CCP	3.72	114.12	108.76
2	D	266	ACO	C4A-C5A-N7A	-3.64	106.41	109.52
2	B	266	ACO	C4A-C5A-N7A	-3.56	106.47	109.52
2	B	266	ACO	CBP-CAP-C9P	3.27	115.90	112.73
2	B	266	ACO	C5A-C4A-N3A	-3.17	118.79	125.70
2	B	266	ACO	C8A-N9A-C4A	3.15	109.31	106.90
2	A	266	ACO	C7P-C6P-C5P	-3.01	107.13	112.25
2	C	266	ACO	C1B-N9A-C4A	-2.99	121.48	126.64
2	D	266	ACO	O3B-P3B-O7A	-2.95	98.56	106.79
2	D	266	ACO	C5A-C4A-N3A	-2.73	119.76	125.70
2	A	266	ACO	O9A-P3B-O8A	2.72	118.22	107.61
5	B	267	EPE	O3S-S-C10	2.69	109.34	105.93
2	A	266	ACO	C5A-C4A-N3A	-2.66	119.91	125.70

Continued on next page...

Continued from previous page...

Mol	Chain	Res	Type	Atoms	Z	Observed(°)	Ideal(°)
2	D	266	ACO	O9A-P3B-O7A	2.64	119.06	110.44
2	D	266	ACO	C2A-N3A-C4A	2.55	121.27	114.01
2	D	266	ACO	C1B-N9A-C4A	-2.53	122.27	126.64
2	C	266	ACO	O3B-P3B-O7A	-2.41	100.05	106.79
2	B	266	ACO	C2A-N3A-C4A	2.41	120.88	114.01
2	C	266	ACO	C2A-N1A-C6A	2.39	123.08	118.77
2	C	266	ACO	C4A-C5A-N7A	-2.35	107.51	109.52
2	A	266	ACO	O4B-C1B-N9A	2.32	110.60	108.44
2	A	266	ACO	C4A-C5A-N7A	-2.28	107.57	109.52
2	C	266	ACO	O9A-P3B-O7A	2.25	117.80	110.44
2	A	266	ACO	C2A-N1A-C6A	2.24	122.82	118.77
2	D	266	ACO	O5A-P2A-O3A	2.15	115.34	105.14
2	C	266	ACO	C5A-C4A-N3A	-2.10	121.12	125.70
2	C	266	ACO	P2A-O3A-P1A	-2.07	125.62	131.68
2	C	266	ACO	P3B-O3B-C3B	-2.03	117.67	121.96
2	B	266	ACO	CDP-CBP-CAP	2.02	112.32	108.82

There are no chirality outliers.

There are no torsion outliers.

There are no ring outliers.

5.7 Other polymers ⓘ

There are no such residues in this entry.

5.8 Polymer linkage issues

There are no chain breaks in this entry.

6 Fit of model and data ⓘ

6.1 Protein, DNA and RNA chains ⓘ

In the following table, the column labelled ‘#RSRZ> 2’ contains the number (and percentage) of RSRZ outliers, followed by percent RSRZ outliers for the chain as percentile scores relative to all X-ray entries and entries of similar resolution. The OWAB column contains the minimum, median, 95th percentile and maximum values of the occupancy-weighted average B-factor per residue. The column labelled ‘Q< 0.9’ lists the number of (and percentage) of residues with an average occupancy less than 0.9.

Mol	Chain	Analysed	<RSRZ>	#RSRZ>2	OWAB(Å ²)	Q<0.9
1	A	266/268 (99%)	0.15	13 (4%) 28 31	9, 17, 32, 45	0
1	B	266/268 (99%)	1.10	39 (14%) 3 3	8, 15, 29, 39	0
1	C	264/268 (98%)	0.04	10 (3%) 38 43	8, 16, 31, 39	0
1	D	266/268 (99%)	1.30	65 (24%) 1 1	8, 15, 30, 40	0
All	All	1062/1072 (99%)	0.65	127 (11%) 5 6	8, 16, 31, 45	0

All (127) RSRZ outliers are listed below:

Mol	Chain	Res	Type	RSRZ
1	D	245	CYS	6.2
1	D	217	TYR	5.9
1	B	192	CYS	5.6
1	A	-2	SER	5.2
1	D	243	ALA	4.9
1	D	192	CYS	4.8
1	D	227	VAL	4.6
1	C	204	ASN	4.5
1	D	246	ARG	4.5
1	D	237	MSE	4.5
1	D	242	ASN	4.4
1	D	240	ILE	4.4
1	D	241	GLY	4.3
1	D	218	ASP	4.3
1	D	191	ALA	4.3
1	D	229	PHE	4.2
1	D	233	GLY	4.1
1	D	222	PHE	4.0
1	D	231	GLN	3.9
1	A	192	CYS	3.8
1	D	253	ILE	3.8

Continued on next page...

Continued from previous page...

Mol	Chain	Res	Type	RSRZ
1	B	191	ALA	3.8
1	A	233	GLY	3.8
1	D	235	VAL	3.7
1	D	194	LEU	3.7
1	D	247	LEU	3.6
1	C	191	ALA	3.5
1	D	6	ALA	3.5
1	D	199	ALA	3.5
1	D	0	ALA	3.4
1	D	195	ILE	3.4
1	D	244	LYS	3.3
1	D	215	MSE	3.3
1	C	233	GLY	3.3
1	A	263	LYS	3.3
1	D	223	VAL	3.3
1	C	192	CYS	3.3
1	D	248	MSE	3.2
1	D	171	LEU	3.2
1	D	238	GLY	3.2
1	B	114	VAL	3.2
1	D	234	THR	3.2
1	B	123	VAL	3.2
1	D	254	VAL	3.1
1	B	124	VAL	3.1
1	D	174	VAL	3.1
1	B	145	VAL	3.1
1	D	172	ILE	3.1
1	B	209	TRP	3.1
1	D	225	ILE	3.1
1	D	236	THR	3.0
1	D	4	ILE	3.0
1	D	213	VAL	2.9
1	D	261	PHE	2.9
1	D	230	GLU	2.8
1	D	182	VAL	2.8
1	B	251	ARG	2.8
1	D	216	ASP	2.8
1	D	258	THR	2.8
1	B	160[A]	ARG	2.8
1	D	197	VAL	2.7
1	B	253	ILE	2.7
1	B	254	VAL	2.7

Continued on next page...

Continued from previous page...

Mol	Chain	Res	Type	RSRZ
1	D	228	GLU	2.6
1	D	208	VAL	2.6
1	D	200	PRO	2.6
1	D	232	LYS	2.6
1	B	208	VAL	2.6
1	B	143	ILE	2.6
1	B	204	ASN	2.6
1	B	201	ILE	2.6
1	D	226	GLY	2.5
1	D	256	PHE	2.5
1	A	232	LYS	2.5
1	B	212	PHE	2.5
1	B	167	GLY	2.5
1	A	262	ARG	2.5
1	B	262[A]	ARG	2.5
1	B	59	ILE	2.5
1	D	209	TRP	2.4
1	B	194	LEU	2.4
1	A	204	ASN	2.4
1	D	173	GLY	2.4
1	A	258	THR	2.4
1	B	247	LEU	2.4
1	C	227	VAL	2.4
1	D	108	ARG	2.4
1	A	191	ALA	2.4
1	B	202	ILE	2.3
1	B	206	GLU	2.3
1	B	217	TYR	2.3
1	A	-1	ASN	2.3
1	A	219	SER	2.3
1	D	214	ASP	2.3
1	B	213	VAL	2.3
1	B	99	ALA	2.3
1	B	245	CYS	2.3
1	D	178	SER	2.3
1	D	205	GLY	2.3
1	B	137	GLY	2.3
1	D	260	TRP	2.2
1	B	199	ALA	2.2
1	A	261	PHE	2.2
1	B	64	THR	2.2
1	B	141	GLU	2.2

Continued on next page...

Continued from previous page...

Mol	Chain	Res	Type	RSRZ
1	D	79	HIS	2.2
1	B	104	ILE	2.2
1	C	234	THR	2.2
1	B	119	THR	2.2
1	C	261	PHE	2.1
1	B	140	ALA	2.1
1	B	144	THR	2.1
1	D	198	GLY	2.1
1	C	190	GLY	2.1
1	C	205	GLY	2.1
1	D	42	GLY	2.1
1	B	135	ALA	2.1
1	B	234	THR	2.1
1	D	206	GLU	2.1
1	C	262	ARG	2.1
1	D	2	ASN	2.0
1	B	134	ALA	2.0
1	D	239	LYS	2.0
1	B	65	ILE	2.0
1	A	227	VAL	2.0
1	D	5	VAL	2.0
1	D	114	VAL	2.0

6.2 Non-standard residues in protein, DNA, RNA chains ⓘ

There are no non-standard protein/DNA/RNA residues in this entry.

6.3 Carbohydrates ⓘ

There are no carbohydrates in this entry.

6.4 Ligands ⓘ

In the following table, the Atoms column lists the number of modelled atoms in the group and the number defined in the chemical component dictionary. LLDF column lists the quality of electron density of the group with respect to its neighbouring residues in protein, DNA or RNA chains. The B-factors column lists the minimum, median, 95th percentile and maximum values of B factors of atoms in the group. The column labelled 'Q < 0.9' lists the number of atoms with occupancy less than 0.9.

Mol	Type	Chain	Res	Atoms	RSR	LLDF	B-factors(\AA^2)	Q<0.9
5	EPE	B	267	15/15	0.27	8.70	74,79,86,86	0
3	CL	B	271	1/1	0.18	-0.11	36,36,36,36	0
2	ACO	C	266	51/51	0.10	-0.24	18,24,40,44	0
3	CL	A	267	1/1	0.11	-0.30	38,38,38,38	0
3	CL	C	270	1/1	0.10	-0.42	37,37,37,37	0
2	ACO	A	266	51/51	0.10	-0.49	20,28,44,47	0
3	CL	C	267	1/1	0.07	-1.20	34,34,34,34	0
3	CL	C	268	1/1	0.06	-1.33	35,35,35,35	0
3	CL	D	269	1/1	0.17	-1.54	38,38,38,38	0
2	ACO	B	266	51/51	0.10	-1.60	15,22,37,40	0
3	CL	C	269	1/1	0.05	-1.97	34,34,34,34	0
2	ACO	D	266	51/51	0.09	-2.33	13,21,37,38	0
3	CL	D	268	1/1	0.10	-2.68	41,41,41,41	0
3	CL	B	268	1/1	0.06	-3.23	38,38,38,38	0
3	CL	D	267	1/1	0.04	-3.52	37,37,37,37	0
4	MG	B	269	1/1	0.06	-4.54	36,36,36,36	0
3	CL	B	270	1/1	0.07	-5.22	32,32,32,32	0
4	MG	D	270	1/1	0.05	-7.91	36,36,36,36	0

6.5 Other polymers ⓘ

There are no such residues in this entry.