



Full wwPDB X-ray Structure Validation Report

Mar 12, 2014 – 06:55 PM GMT

PDB ID : 4L1F
Title : Electron transferring flavoprotein of Acidaminococcus fermentans: Towards a mechanism of flavin-based electron bifurcation
Authors : Mowafy, A.M.; Chowdhury, N.P.; Demmer, J.; Upadhyay, V.; Kolzer, S.; Jayamani, E.; Kahnt, J.; Demmer, U.; Ermler, U.; Buckel, W.
Deposited on : 2013-06-03
Resolution : 1.79 Å(reported)

This is a full wwPDB validation report for a publicly released PDB entry.
We welcome your comments at validation@mail.wwpdb.org
A user guide is available at <http://wwpdb.org/ValidationPDFNotes.html>

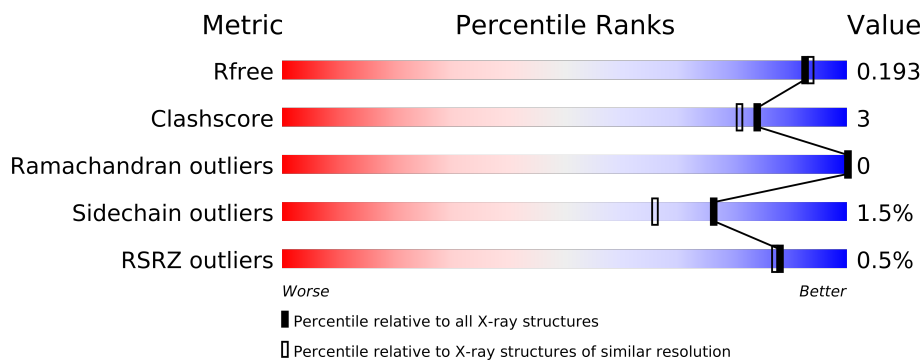
The following versions of software and data (see [references](#)) were used in the production of this report:

MolProbity : 4.02b-467
Mogul : 1.16 November 2013
Xtriage (Phenix) : dev-1323
EDS : trunk22714
Percentile statistics : 21963
Refmac : 5.8.0049
CCP4 : 6.3.0 (Settle)
Ideal geometry (proteins) : Engh & Huber (2001)
Ideal geometry (DNA, RNA) : Parkinson et. al. (1996)
Validation Pipeline (wwPDB-VP) : trunk22714

1 Overall quality at a glance

The reported resolution of this entry is 1.79 Å.

Percentile scores (ranging between 0-100) for global validation metrics of the entry are shown in the following graphic. The table shows the number of entries on which the scores are based.



Metric	Whole archive (#Entries)	Similar resolution (#Entries, resolution range(Å))
R_{free}	66092	3513 (1.80-1.80)
Clashscore	79885	4461 (1.80-1.80)
Ramachandran outliers	78287	4404 (1.80-1.80)
Sidechain outliers	78261	4403 (1.80-1.80)
RSRZ outliers	66119	3515 (1.80-1.80)

The table below summarises the geometric issues observed across the polymeric chains and their fit to the electron density. The red, orange, yellow and green segments on the lower bar indicate the fraction of residues that contain outliers for ≥ 3 , 2, 1 and 0 types of geometric quality criteria. The upper red bar (where present) indicates the fraction of residues that have poor fit to the electron density.

Mol	Chain	Length	Quality of chain
1	A	383	
1	B	383	

The following table lists non-polymeric compounds that are outliers for geometric or electron-density-fit criteria:

Mol	Type	Chain	Res	Geometry	Electron density
3	COS	A	402	-	X
3	COS	B	402	-	X
5	PDO	A	404	-	X

2 Entry composition i

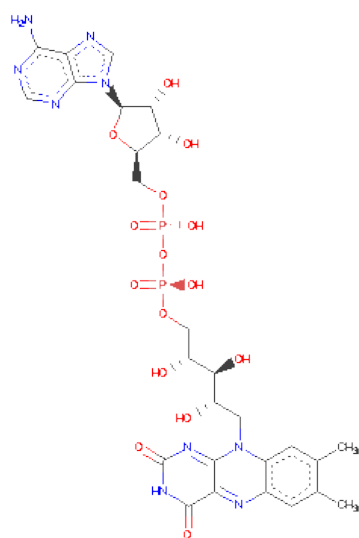
There are 7 unique types of molecules in this entry. The entry contains 6653 atoms, of which 0 are hydrogen and 0 are deuterium.

In the tables below, the ZeroOcc column contains the number of atoms modelled with zero occupancy, the AltConf column contains the number of residues with at least one atom in alternate conformation and the Trace column contains the number of residues modelled with at most 2 atoms.

- Molecule 1 is a protein called Acyl-CoA dehydrogenase domain protein.

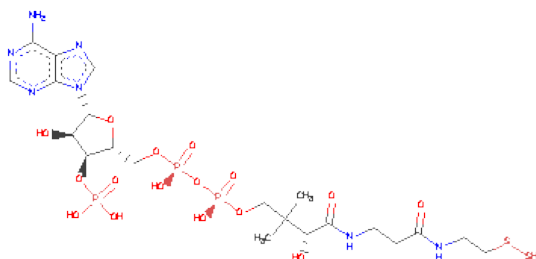
Mol	Chain	Residues	Atoms					ZeroOcc	AltConf	Trace
1	A	380	Total	C	N	O	S	0	1	0
			2910	1843	477	566	24			
1	B	380	Total	C	N	O	S	0	1	0
			2910	1843	477	566	24			

- Molecule 2 is FLAVIN-ADENINE DINUCLEOTIDE (three-letter code: FAD) (formula: $C_{27}H_{33}N_9O_{15}P_2$).



Mol	Chain	Residues	Atoms					ZeroOcc	AltConf
2	A	1	Total	C	N	O	P	0	0
			53	27	9	15	2		
2	B	1	Total	C	N	O	P	0	0
			53	27	9	15	2		

- Molecule 3 is COENZYME A PERSULFIDE (three-letter code: COS) (formula: $C_{21}H_{36}N_7O_{16}P_3S_2$).

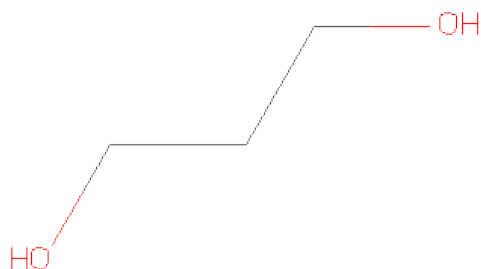


Mol	Chain	Residues	Atoms						ZeroOcc	AltConf
3	A	1	Total	C	N	O	P	S	0	0
			49	21	7	16	3	2		
3	B	1	Total	C	N	O	P	S	0	0
			49	21	7	16	3	2		

- Molecule 4 is SODIUM ION (three-letter code: NA) (formula: Na).

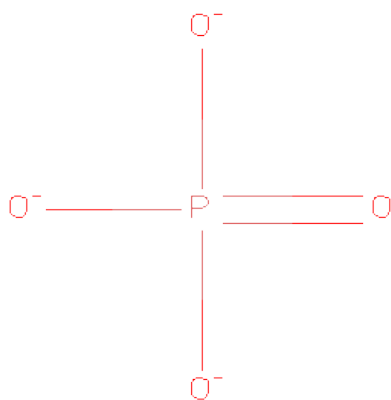
Mol	Chain	Residues	Atoms		ZeroOcc	AltConf
4	B	1	Total	Na	0	0
			1	1		
4	A	2	Total	Na	0	0
			2	2		

- Molecule 5 is 1,3-PROPANDIOL (three-letter code: PDO) (formula: C₃H₈O₂).



Mol	Chain	Residues	Atoms			ZeroOcc	AltConf
5	A	1	Total	C	O	0	0
			5	3	2		

- Molecule 6 is PHOSPHATE ION (three-letter code: PO4) (formula: O₄P).



Mol	Chain	Residues	Atoms			ZeroOcc	AltConf
6	B	1	Total	O	P	0	0
			5	4	1		

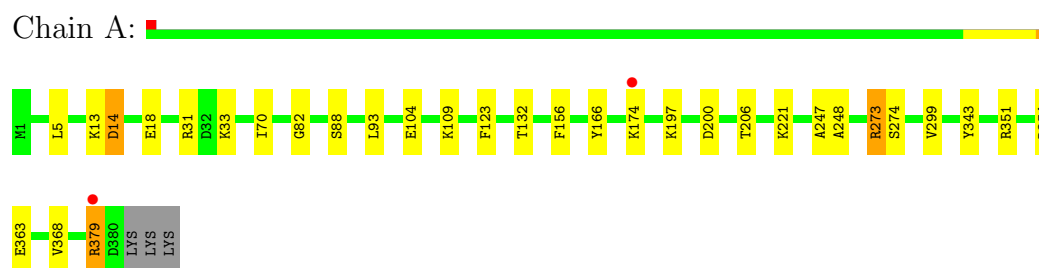
- Molecule 7 is water.

Mol	Chain	Residues	Atoms		ZeroOcc	AltConf
7	A	313	Total 313	O 313	0	0
7	B	303	Total 303	O 303	0	0

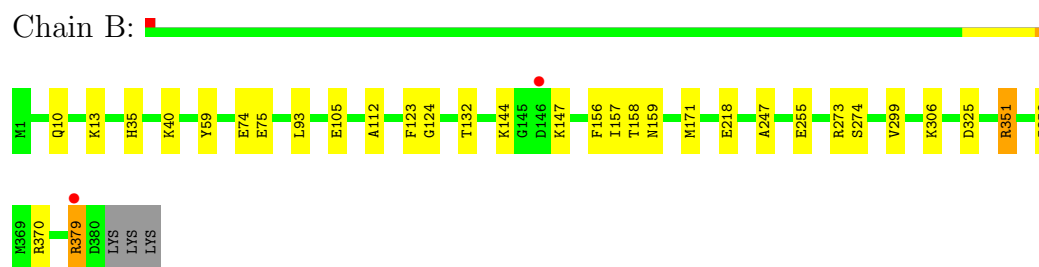
3 Residue-property plots

These plots are drawn for all protein, RNA and DNA chains in the entry. The first graphic for a chain summarises the proportions of errors displayed in the second graphic. The second graphic shows the sequence view annotated by issues in geometry and electron density. Residues are color-coded according to the number of geometric quality criteria for which they contain at least one outlier: green = 0, yellow = 1, orange = 2 and red = 3 or more. A red dot above a residue indicates a poor fit to the electron density ($RSRZ > 2$). Stretches of 2 or more consecutive residues without any outlier are shown as a green connector. Residues present in the sample, but not in the model, are shown in grey.

- Molecule 1: Acyl-CoA dehydrogenase domain protein



- Molecule 1: Acyl-CoA dehydrogenase domain protein



4 Data and refinement statistics

Property	Value	Source
Space group	P 21 21 2	Depositor
Cell constants a, b, c, α , β , γ	109.10Å 141.40Å 64.10Å 90.00° 90.00° 90.00°	Depositor
Resolution (Å)	47.13 – 1.79 47.13 – 1.79	Depositor EDS
% Data completeness (in resolution range)	99.3 (47.13-1.79) 99.3 (47.13-1.79)	Depositor EDS
R_{merge}	(Not available)	Depositor
R_{sym}	(Not available)	Depositor
$\langle I/\sigma(I) \rangle$ ¹	3.04 (at 1.79Å)	Xtriage
Refinement program	REFMAC 5.7.0032	Depositor
R, R_{free}	0.153 , 0.183 0.165 , 0.193	Depositor DCC
R_{free} test set	4666 reflections (5.28%)	DCC
Wilson B-factor (Å ²)	16.7	Xtriage
Anisotropy	0.106	Xtriage
Bulk solvent k_{sol} (e/Å ³), B_{sol} (Å ²)	0.39 , 34.5	EDS
Estimated twinning fraction	No twinning to report.	Xtriage
L-test for twinning	$\langle L \rangle = 0.46$, $\langle L^2 \rangle = 0.29$	Xtriage
Outliers	0 of 93074 reflections	Xtriage
F_o, F_c correlation	0.95	EDS
Total number of atoms	6653	wwPDB-VP
Average B, all atoms (Å ²)	18.0	wwPDB-VP

Xtriage's analysis on translational NCS is as follows: *The largest off-origin peak in the Patterson function is 4.23% of the height of the origin peak. No significant pseudotranslation is detected.*

¹Intensities estimated from amplitudes.

5 Model quality

5.1 Standard geometry

Bond lengths and bond angles in the following residue types are not validated in this section: PDO, NA, COS, PO4, FAD

The Z score for a bond length (or angle) is the number of standard deviations the observed value is removed from the expected value. A bond length (or angle) with $|Z| > 5$ is considered an outlier worth inspection. RMSZ is the root-mean-square of all Z scores of the bond lengths (or angles).

Mol	Chain	Bond lengths		Bond angles	
		RMSZ	$\# Z > 5$	RMSZ	$\# Z > 5$
1	A	1.11	4/2959 (0.1%)	1.09	12/3980 (0.3%)
1	B	1.08	3/2959 (0.1%)	1.06	8/3980 (0.2%)
All	All	1.10	7/5918 (0.1%)	1.07	20/7960 (0.3%)

All (7) bond length outliers are listed below:

Mol	Chain	Res	Type	Atoms	Z	Observed(Å)	Ideal(Å)
1	A	166	TYR	CG-CD1	6.75	1.48	1.39
1	A	274	SER	CB-OG	-6.60	1.33	1.42
1	B	274	SER	CB-OG	-6.20	1.34	1.42
1	B	75	GLU	CD-OE1	-6.16	1.18	1.25
1	B	105	GLU	CD-OE1	5.57	1.31	1.25
1	A	104	GLU	CD-OE2	5.11	1.31	1.25
1	A	88	SER	CA-CB	5.02	1.60	1.52

All (20) bond angle outliers are listed below:

Mol	Chain	Res	Type	Atoms	Z	Observed(°)	Ideal(°)
1	A	273	ARG	NE-CZ-NH2	-10.30	115.15	120.30
1	B	325	ASP	CB-CG-OD1	7.29	124.86	118.30
1	B	351	ARG	NE-CZ-NH1	7.15	123.88	120.30
1	A	174	LYS	CD-CE-NZ	6.83	127.41	111.70
1	B	171	MET	CG-SD-CE	-6.80	89.32	100.20
1	B	362	TYR	CB-CG-CD2	-6.62	117.03	121.00
1	A	14	ASP	CB-CG-OD1	6.60	124.24	118.30
1	A	351	ARG	NE-CZ-NH1	6.24	123.42	120.30
1	A	31	ARG	NE-CZ-NH1	6.19	123.39	120.30
1	A	362	TYR	CB-CG-CD1	6.10	124.66	121.00
1	B	370	ARG	NE-CZ-NH1	6.00	123.30	120.30
1	A	362	TYR	CB-CG-CD2	-5.78	117.53	121.00

Continued on next page...

Continued from previous page...

Mol	Chain	Res	Type	Atoms	Z	Observed(°)	Ideal(°)
1	A	109	LYS	CD-CE-NZ	-5.67	98.67	111.70
1	B	362	TYR	CB-CG-CD1	5.40	124.24	121.00
1	A	354	ARG	NE-CZ-NH2	5.38	122.99	120.30
1	A	274	SER	N-CA-CB	5.36	118.54	110.50
1	A	273	ARG	NE-CZ-NH1	5.22	122.91	120.30
1	B	362	TYR	CA-CB-CG	5.12	123.14	113.40
1	B	273	ARG	NE-CZ-NH2	-5.10	117.75	120.30
1	A	33	LYS	CD-CE-NZ	5.06	123.33	111.70

There are no chirality outliers.

There are no planarity outliers.

5.2 Close contacts ⓘ

In the following table, the Non-H and H(model) columns list the number of non-hydrogen atoms and hydrogen atoms in the chain respectively. The H(added) column lists the number of hydrogens added by MolProbity. The Clashes column lists the number of clashes within the asymmetric unit, and the number in parentheses is this value normalized per 1000 atoms of the molecule in the chain. The Symm-Clashes column gives symmetry related clashes, in the same way as for the Clashes column.

Mol	Chain	Non-H	H(model)	H(added)	Clashes	Symm-Clashes
1	A	2910	0	2879	16	0
1	B	2910	0	2879	19	0
2	A	53	0	31	3	0
2	B	53	0	31	5	0
3	A	49	0	32	1	0
3	B	49	0	32	0	0
4	A	2	0	0	0	0
4	B	1	0	0	0	0
5	A	5	0	8	1	0
6	B	5	0	0	0	0
7	A	313	0	0	3	0
7	B	303	0	0	5	0
All	All	6653	0	5892	34	0

Clashscore is defined as the number of clashes calculated for the entry per 1000 atoms (including hydrogens) of the entry. The overall clashscore for this entry is 3.

All (34) close contacts within the same asymmetric unit are listed below.

Atom-1	Atom-2	Distance(Å)	Clash(Å)
1:B:10:GLN:NE2	7:B:621:HOH:O	2.14	0.72
1:B:156:PHE:O	2:B:401:FAD:C4X	2.38	0.70
1:A:358:ILE:HD11	2:A:401:FAD:HM83	1.80	0.63
1:A:358:ILE:CD1	2:A:401:FAD:HM83	2.30	0.62
1:A:197:LYS:HE2	7:A:799:HOH:O	2.00	0.60
1:A:200:ASP:OD1	7:A:561:HOH:O	2.16	0.60
1:B:358:ILE:HD11	2:B:401:FAD:HM83	1.86	0.56
1:B:306:LYS:NZ	7:B:767:HOH:O	2.39	0.56
1:B:13:LYS:HE2	7:B:737:HOH:O	2.09	0.52
1:A:156:PHE:O	2:A:401:FAD:C4X	2.58	0.52
1:B:379:ARG:NE	7:B:729:HOH:O	2.43	0.51
1:A:13:LYS:HE2	7:A:730:HOH:O	2.11	0.50
1:A:5:LEU:O	5:A:404:PDO:H21	2.11	0.50
1:A:247:ALA:HB1	1:A:299:VAL:HG22	1.94	0.49
1:B:156:PHE:HB3	2:B:401:FAD:C9A	2.43	0.49
1:A:343:TYR:CZ	1:B:358:ILE:HB	2.47	0.49
1:B:351:ARG:NH2	7:B:760:HOH:O	2.48	0.47
1:B:358:ILE:CD1	2:B:401:FAD:HM83	2.45	0.46
1:A:70:ILE:HG23	1:A:248:ALA:HB2	1.97	0.46
1:B:156:PHE:HB3	2:B:401:FAD:C9	2.46	0.46
1:B:74:GLU:OE2	1:B:255:GLU:OE1	2.34	0.46
1:A:363:GLU:N	3:A:402:COS:S'P	2.76	0.45
1:B:93:LEU:HB3	1:B:123:PHE:HB2	1.98	0.44
1:B:147:LYS:HD2	1:B:218:GLU:HB3	1.98	0.44
1:B:124:GLY:HA2	1:B:157:ILE:HD12	1.99	0.44
1:A:93:LEU:HB3	1:A:123:PHE:HB2	1.99	0.44
1:A:132:THR:HG23	1:A:368:VAL:CG2	2.48	0.43
1:B:59:TYR:O	1:B:112:ALA:HA	2.19	0.42
1:A:82:GLY:HA3	1:A:206:THR:OG1	2.19	0.42
1:B:132:THR:HG23	1:B:368:VAL:CG2	2.50	0.42
1:B:247:ALA:HB1	1:B:299:VAL:HG22	2.02	0.42
1:A:379:ARG:NH1	1:A:379:ARG:HB3	2.34	0.42
1:A:14:ASP:O	1:A:18:GLU:HG3	2.20	0.41
1:B:158:THR:O	1:B:159:ASN:HB2	2.20	0.41

There are no symmetry-related clashes.

5.3 Torsion angles

5.3.1 Protein backbone ⓘ

In the following table, the Percentiles column shows the percent Ramachandran outliers of the chain as a percentile score with respect to all X-ray entries followed by that with respect to entries

of similar resolution. The Analysed column shows the number of residues for which the backbone conformation was analysed, and the total number of residues.

Mol	Chain	Analysed	Favoured	Allowed	Outliers	Percentiles	
1	A	379/383 (99%)	371 (98%)	8 (2%)	0	100	100
1	B	379/383 (99%)	368 (97%)	11 (3%)	0	100	100
All	All	758/766 (99%)	739 (98%)	19 (2%)	0	100	100

There are no Ramachandran outliers to report.

5.3.2 Protein sidechains ⓘ

In the following table, the Percentiles column shows the percent sidechain outliers of the chain as a percentile score with respect to all X-ray entries followed by that with respect to entries of similar resolution. The Analysed column shows the number of residues for which the sidechain conformation was analysed, and the total number of residues.

Mol	Chain	Analysed	Rotameric	Outliers	Percentiles	
1	A	298/300 (99%)	294 (99%)	4 (1%)	80	71
1	B	298/300 (99%)	293 (98%)	5 (2%)	73	61
All	All	596/600 (99%)	587 (98%)	9 (2%)	76	66

All (9) residues with a non-rotameric sidechain are listed below:

Mol	Chain	Res	Type
1	A	221	LYS
1	A	273	ARG
1	A	362	TYR
1	A	379	ARG
1	B	35	HIS
1	B	40	LYS
1	B	144	LYS
1	B	362	TYR
1	B	379	ARG

Some sidechains can be flipped to improve hydrogen bonding and reduce clashes. All (4) such sidechains are listed below:

Mol	Chain	Res	Type
1	A	179	HIS
1	A	205	HIS
1	B	179	HIS

Continued on next page...

Continued from previous page...

Mol	Chain	Res	Type
1	B	205	HIS

5.3.3 RNA ⓘ

There are no RNA chains in this entry.

5.4 Non-standard residues in protein, DNA, RNA chains ⓘ

There are no non-standard protein/DNA/RNA residues in this entry.

5.5 Carbohydrates ⓘ

There are no carbohydrates in this entry.

5.6 Ligand geometry ⓘ

Of 9 ligands modelled in this entry, 3 are monoatomic - leaving 6 for Mogul analysis.

In the following table, the Counts columns list the number of bonds (or angles) for which Mogul statistics could be retrieved, the number of bonds (or angles) that are observed in the model and the number of bonds (or angles) that are defined in the chemical component dictionary. The Link column lists molecule types, if any, to which the group is linked. The Z score for a bond length (or angle) is the number of standard deviations the observed value is removed from the expected value. A bond length (or angle) with $|Z| > 2$ is considered an outlier worth inspection. RMSZ is the root-mean-square of all Z scores of the bond lengths (or angles).

Mol	Type	Chain	Res	Link	Bond lengths			Bond angles		
					Counts	RMSZ	$\# Z > 2$	Counts	RMSZ	$\# Z > 2$
2	FAD	A	401	-	58,58,58	1.68	9 (15%)	85,89,89	2.43	30 (35%)
3	COS	A	402	-	50,51,51	1.49	6 (12%)	76,76,76	2.13	21 (27%)
5	PDO	A	404	-	4,4,4	0.51	0	3,3,3	0.29	0
2	FAD	B	401	-	58,58,58	1.52	8 (13%)	85,89,89	2.09	18 (21%)
3	COS	B	402	-	50,51,51	1.64	8 (16%)	76,76,76	1.96	20 (26%)
6	PO4	B	403	-	4,4,4	0.30	0	6,6,6	0.28	0

In the following table, the Chirals column lists the number of chiral outliers, the number of chiral centers analysed, the number of these observed in the model and the number defined in the chemical component dictionary. Similar counts are reported in the Torsion and Rings columns. '-' means no outliers of that kind were identified.

Mol	Type	Chain	Res	Link	Chirals	Torsions	Rings
2	FAD	A	401	-	-	0/34/50/50	0/6/6/6
3	COS	A	402	-	-	0/48/65/65	0/3/3/3
5	PDO	A	404	-	-	0/2/2/2	0/0/0/0
2	FAD	B	401	-	-	0/34/50/50	0/6/6/6
3	COS	B	402	-	-	0/48/65/65	0/3/3/3
6	PO4	B	403	-	-	0/0/0/0	0/0/0/0

All (31) bond length outliers are listed below:

Mol	Chain	Res	Type	Atoms	Z	Observed(Å)	Ideal(Å)
3	A	402	COS	CBP-CAP	7.03	1.59	1.55
2	A	401	FAD	C6-C5X	-6.48	1.32	1.41
3	B	402	COS	CBP-CAP	5.26	1.58	1.55
2	B	401	FAD	C4X-C10	4.09	1.48	1.41
2	B	401	FAD	O2-C2	4.09	1.27	1.21
3	B	402	COS	P1A-O3A	3.90	1.66	1.59
3	B	402	COS	O4B-C1B	3.68	1.45	1.41
3	B	402	COS	C5A-C4A	3.54	1.48	1.40
2	A	401	FAD	C5'-C4'	3.52	1.57	1.51
3	A	402	COS	C4A-N9A	-3.51	1.32	1.37
2	A	401	FAD	P-O3P	3.48	1.66	1.59
2	B	401	FAD	O4B-C1B	3.40	1.45	1.41
3	B	402	COS	P2A-O3A	3.33	1.65	1.59
2	B	401	FAD	C6-C5X	-3.29	1.37	1.41
2	A	401	FAD	O2-C2	3.27	1.26	1.21
2	A	401	FAD	C8A-N9A	-3.20	1.31	1.36
2	A	401	FAD	O4B-C1B	3.16	1.45	1.41
3	B	402	COS	C4A-N9A	-3.09	1.33	1.37
2	A	401	FAD	C4A-N9A	-3.08	1.33	1.37
3	A	402	COS	C5A-C4A	3.00	1.47	1.40
2	A	401	FAD	C4X-C10	2.99	1.46	1.41
2	B	401	FAD	C9A-C5X	2.82	1.48	1.42
2	A	401	FAD	C4X-N5	2.68	1.37	1.33
3	A	402	COS	P1A-O3A	2.55	1.64	1.59
3	B	402	COS	C8A-N7A	2.48	1.39	1.34
2	B	401	FAD	P-O3P	2.27	1.63	1.59
2	B	401	FAD	C4X-N5	2.17	1.37	1.33
2	B	401	FAD	C4-N3	-2.11	1.33	1.36
3	B	402	COS	C2A-N3A	2.09	1.35	1.32
3	A	402	COS	C2A-N3A	2.03	1.35	1.32
3	A	402	COS	P2A-O3A	2.02	1.63	1.59

All (89) bond angle outliers are listed below:

Mol	Chain	Res	Type	Atoms	Z	Observed(°)	Ideal(°)
2	A	401	FAD	C4X-C10-N10	-8.18	115.57	120.53
2	A	401	FAD	C5X-C9A-N10	8.06	123.57	117.63
2	A	401	FAD	C2-N1-C10	8.02	122.68	114.95
3	A	402	COS	N3A-C2A-N1A	-7.69	122.13	128.89
2	B	401	FAD	C2-N1-C10	7.40	122.07	114.95
3	B	402	COS	N3A-C2A-N1A	-6.78	122.93	128.89
2	B	401	FAD	N3A-C2A-N1A	-6.74	122.96	128.89
2	B	401	FAD	C5X-C9A-N10	6.68	122.56	117.63
3	B	402	COS	CEP-CBP-CCP	-5.68	100.85	108.71
3	A	402	COS	CEP-CBP-CCP	-5.48	101.14	108.71
2	B	401	FAD	C9A-N10-C10	-5.08	116.76	121.77
2	A	401	FAD	N3A-C2A-N1A	-5.03	124.46	128.89
2	B	401	FAD	C4X-C10-N10	-5.02	117.49	120.53
3	B	402	COS	C5A-C4A-N3A	-5.01	121.10	125.98
2	A	401	FAD	C2'-C1'-N10	-4.96	105.81	112.60
2	B	401	FAD	C2'-C1'-N10	-4.86	105.94	112.60
2	A	401	FAD	O4'-C4'-C5'	-4.46	100.96	110.13
3	B	402	COS	N3A-C4A-N9A	4.46	133.04	125.39
3	A	402	COS	C8A-N9A-C4A	4.18	110.35	106.96
3	A	402	COS	N3A-C4A-N9A	4.12	132.45	125.39
3	A	402	COS	CDP-CBP-CCP	-4.09	103.05	108.71
3	B	402	COS	CEP-CBP-CAP	4.03	115.81	108.82
3	A	402	COS	C5A-C4A-N3A	-4.02	122.06	125.98
2	A	401	FAD	C6-C5X-C9A	3.88	124.20	119.02
3	A	402	COS	CEP-CBP-CAP	3.89	115.56	108.82
2	A	401	FAD	P-O3P-PA	-3.82	121.35	131.93
3	A	402	COS	O9P-C9P-CAP	-3.72	114.90	120.05
3	A	402	COS	C1B-N9A-C4A	-3.70	120.25	126.64
2	B	401	FAD	C1'-N10-C10	3.61	122.75	118.82
2	B	401	FAD	C2A-N1A-C6A	3.56	125.11	118.76
2	A	401	FAD	C9A-N10-C10	-3.55	118.27	121.77
2	A	401	FAD	C8A-N9A-C4A	3.50	109.80	106.96
2	A	401	FAD	C9A-C5X-N5	-3.48	117.24	122.39
3	A	402	COS	O9A-P3B-O7A	3.48	121.74	110.36
3	A	402	COS	O3B-P3B-O7A	-3.47	96.84	106.80
2	A	401	FAD	N3A-C4A-N9A	3.42	131.27	125.39
2	B	401	FAD	C4X-C10-N1	-3.40	118.20	123.00
2	B	401	FAD	N3A-C4A-N9A	3.38	131.19	125.39
3	B	402	COS	C1B-N9A-C4A	-3.37	120.82	126.64
2	A	401	FAD	C5A-C4A-N3A	-3.34	122.72	125.98
3	A	402	COS	CEP-CBP-CDP	3.19	115.56	109.22
3	B	402	COS	O4B-C1B-N9A	3.16	114.98	108.10
3	A	402	COS	O5P-C5P-C6P	-3.15	115.88	121.92

Continued on next page...

Continued from previous page...

Mol	Chain	Res	Type	Atoms	Z	Observed(°)	Ideal(°)
2	A	401	FAD	O4B-C1B-C2B	-3.08	102.21	106.69
2	A	401	FAD	O3P-PA-O5B	-3.00	94.95	102.91
2	A	401	FAD	C9-C9A-C5X	-2.97	114.58	119.47
2	A	401	FAD	O2'-C2'-C1'	2.96	116.93	109.88
3	B	402	COS	P2A-O3A-P1A	-2.94	123.79	131.93
3	A	402	COS	C6P-C7P-N8P	-2.87	105.61	111.94
3	A	402	COS	C2A-N1A-C6A	2.86	123.86	118.76
3	B	402	COS	C8A-N9A-C4A	2.84	109.26	106.96
3	A	402	COS	P2A-O3A-P1A	-2.74	124.33	131.93
2	B	401	FAD	N6A-C6A-N1A	2.72	124.89	119.11
2	A	401	FAD	N1-C10-N10	2.67	124.64	115.76
2	A	401	FAD	C1'-N10-C9A	2.64	121.44	118.67
2	A	401	FAD	O3'-C3'-C2'	-2.62	102.13	108.73
2	B	401	FAD	C9A-C5X-N5	-2.60	118.55	122.39
2	B	401	FAD	N1-C10-N10	2.55	124.23	115.76
3	B	402	COS	CDP-CBP-CAP	2.54	113.23	108.82
2	B	401	FAD	O2'-C2'-C1'	2.51	115.88	109.88
2	A	401	FAD	O3B-C3B-C2B	-2.51	103.71	111.83
3	B	402	COS	C3P-N4P-C5P	-2.51	117.70	122.81
2	A	401	FAD	C4X-C10-N1	-2.49	119.48	123.00
3	B	402	COS	C6P-C7P-N8P	-2.49	106.46	111.94
2	B	401	FAD	C5A-C4A-N3A	-2.41	123.64	125.98
2	A	401	FAD	O5'-C5'-C4'	2.37	115.84	109.23
3	B	402	COS	O3B-P3B-O7A	-2.35	100.05	106.80
3	A	402	COS	O2A-P1A-O1A	2.34	125.06	112.14
2	A	401	FAD	O2P-P-O1P	2.31	124.94	112.14
3	B	402	COS	C2A-N1A-C6A	2.29	122.85	118.76
3	B	402	COS	O9A-P3B-O8A	2.29	115.97	107.38
2	B	401	FAD	O3'-C3'-C2'	-2.29	102.97	108.73
3	B	402	COS	N6A-C6A-N1A	2.27	123.92	119.11
3	B	402	COS	P3B-O3B-C3B	2.26	127.00	121.77
3	B	402	COS	CBP-CAP-C9P	-2.23	110.15	113.66
2	A	401	FAD	O4B-C4B-C3B	2.23	109.69	105.16
3	A	402	COS	O3B-C3B-C4B	-2.22	101.39	110.11
2	A	401	FAD	C4A-C5A-N7A	-2.21	107.27	109.41
2	A	401	FAD	C4X-N5-C5X	2.17	119.21	116.68
2	A	401	FAD	O2A-PA-O1A	2.15	124.07	112.14
2	B	401	FAD	P-O3P-PA	-2.15	125.98	131.93
2	A	401	FAD	C5'-C4'-C3'	-2.15	108.00	112.06
3	B	402	COS	O9A-P3B-O3B	-2.09	101.08	107.09
2	B	401	FAD	C4X-N5-C5X	2.07	119.09	116.68
3	A	402	COS	C4A-C5A-N7A	-2.02	107.45	109.41

Continued on next page...

Continued from previous page...

Mol	Chain	Res	Type	Atoms	Z	Observed(°)	Ideal(°)
3	A	402	COS	N6A-C6A-N1A	2.02	123.41	119.11
2	A	401	FAD	C2A-N1A-C6A	2.01	122.34	118.76
3	A	402	COS	C2A-N3A-C4A	2.01	119.06	113.27
3	B	402	COS	C2A-N3A-C4A	2.00	119.04	113.27

There are no chirality outliers.

There are no torsion outliers.

There are no ring outliers.

5.7 Other polymers ⓘ

There are no such residues in this entry.

5.8 Polymer linkage issues

There are no chain breaks in this entry.

6 Fit of model and data

6.1 Protein, DNA and RNA chains

In the following table, the column labelled ‘#RSRZ> 2’ contains the number (and percentage) of RSRZ outliers, followed by percent RSRZ outliers for the chain as percentile scores relative to all X-ray entries and entries of similar resolution. The OWAB column contains the minimum, median, 95th percentile and maximum values of the occupancy-weighted average B-factor per residue. The column labelled ‘Q< 0.9’ lists the number of (and percentage) of residues with an average occupancy less than 0.9.

Mol	Chain	Analysed	<RSRZ>	#RSRZ>2	OWAB(Å ²)	Q<0.9
1	A	380/383 (99%)	-0.23	2 (0%) 88 87	7, 15, 29, 50	0
1	B	380/383 (99%)	-0.20	2 (0%) 88 87	8, 16, 32, 52	0
All	All	760/766 (99%)	-0.21	4 (0%) 88 87	7, 15, 30, 52	0

All (4) RSRZ outliers are listed below:

Mol	Chain	Res	Type	RSRZ
1	A	379	ARG	2.7
1	B	146	ASP	2.3
1	B	379	ARG	2.2
1	A	174	LYS	2.1

6.2 Non-standard residues in protein, DNA, RNA chains

There are no non-standard protein/DNA/RNA residues in this entry.

6.3 Carbohydrates

There are no carbohydrates in this entry.

6.4 Ligands

In the following table, the Atoms column lists the number of modelled atoms in the group and the number defined in the chemical component dictionary. LLDF column lists the quality of electron density of the group with respect to its neighbouring residues in protein, DNA or RNA chains. The B-factors column lists the minimum, median, 95th percentile and maximum values of B factors of atoms in the group. The column labelled ‘Q< 0.9’ lists the number of atoms with occupancy less than 0.9.

Mol	Type	Chain	Res	Atoms	RSR	LLDF	B-factors(\AA^2)	Q<0.9
3	COS	B	402	49/49	0.20	3.64	20,31,50,52	0
3	COS	A	402	49/49	0.17	3.23	21,30,47,59	0
5	PDO	A	404	5/5	0.32	3.22	44,47,48,49	0
4	NA	A	403	1/1	0.08	1.10	31,31,31,31	0
4	NA	A	405	1/1	0.09	1.07	31,31,31,31	0
4	NA	B	404	1/1	0.10	1.03	42,42,42,42	0
6	PO4	B	403	5/5	0.12	0.46	52,60,65,70	0
2	FAD	B	401	53/53	0.07	-0.09	9,12,18,21	0
2	FAD	A	401	53/53	0.07	-0.42	9,13,18,20	0

6.5 Other polymers ⓘ

There are no such residues in this entry.