



Full wwPDB X-ray Structure Validation Report

Feb 28, 2014 – 02:58 AM GMT

PDB ID : 1L2G
Title : Structure of a C-terminally truncated form of glycoprotein D from HSV-1
Authors : Carfi, A.; Willis, S.H.; Whitbeck, J.C.; Krummenacher, C.; Cohen, G.H.;
Eisenberg, R.J.; Wiley, D.C.
Deposited on : 2002-02-21
Resolution : 2.85 Å(reported)

This is a full wwPDB validation report for a publicly released PDB entry.
We welcome your comments at validation@mail.wwpdb.org
A user guide is available at <http://wwpdb.org/ValidationPDFNotes.html>

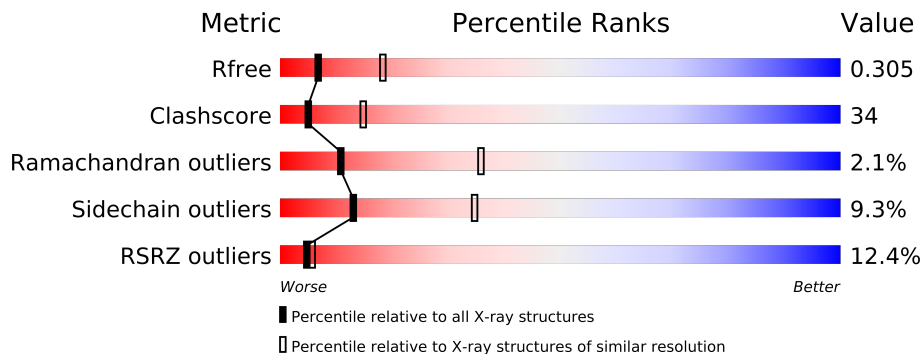
The following versions of software and data (see [references](#)) were used in the production of this report:

MolProbity : 4.02b-467
Mogul : 1.15 2013
Xtriage (Phenix) : dev-1323
EDS : stable22639
Percentile statistics : 21963
Refmac : 5.8.0049
CCP4 : 6.3.0 (Settle)
Ideal geometry (proteins) : Engh & Huber (2001)
Ideal geometry (DNA, RNA) : Parkinson et. al. (1996)
Validation Pipeline (wwPDB-VP) : stable22683

1 Overall quality at a glance

The reported resolution of this entry is 2.85 Å.

Percentile scores (ranging between 0-100) for global validation metrics of the entry are shown in the following graphic. The table shows the number of entries on which the scores are based.



Metric	Whole archive (#Entries)	Similar resolution (#Entries, resolution range(Å))
R_{free}	66092	1524 (2.90-2.82)
Clashscore	79885	1879 (2.90-2.82)
Ramachandran outliers	78287	1824 (2.90-2.82)
Sidechain outliers	78261	1827 (2.90-2.82)
RSRZ outliers	66119	1526 (2.90-2.82)

The table below summarises the geometric issues observed across the polymeric chains and their fit to the electron density. The red, orange, yellow and green segments on the lower bar indicate the fraction of residues that contain outliers for ≥ 3 , 2, 1 and 0 types of geometric quality criteria. The upper red bar (where present) indicates the fraction of residues that have poor fit to the electron density.

Mol	Chain	Length	Quality of chain
1	1-A	287	
1	1-B	287	
1	1-C	287	
1	1-D	287	
1	2-A	287	
1	2-B	287	
1	2-C	287	
1	2-D	287	

The following table lists non-polymeric compounds that are outliers for geometric or electron-density-fit criteria:

Mol	Type	Chain	Res	Geometry	Electron density
2	NAG	1-D	430	-	X

Continued on next page...

Continued from previous page...

Mol	Type	Chain	Res	Geometry	Electron density
2	NAG	2-D	430	-	X

2 Entry composition

There are 2 unique types of molecules in this entry. The entry contains 15376 atoms, of which 0 are hydrogen and 0 are deuterium.

In the tables below, the ZeroOcc column contains the number of atoms modelled with zero occupancy, the AltConf column contains the number of residues with at least one atom in alternate conformation and the Trace column contains the number of residues modelled with at most 2 atoms.

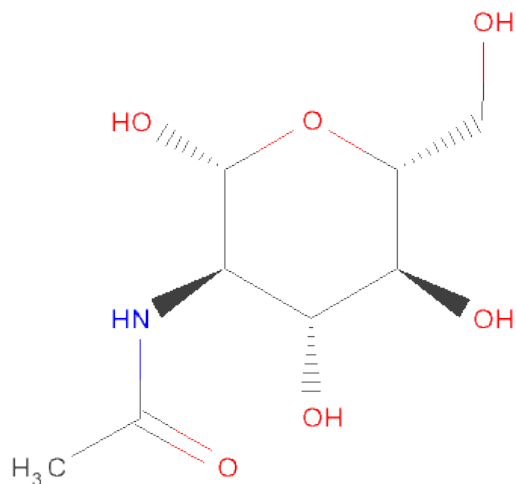
- Molecule 1 is a protein called Glycoprotein D.

Mol	Chain	Residues	Atoms					ZeroOcc	AltConf	Trace
1	1-A	242	Total	C	N	O	S	0	0	0
			1908	1226	330	342	10			
1	1-B	242	Total	C	N	O	S	0	0	0
			1908	1226	330	342	10			
1	1-D	242	Total	C	N	O	S	0	0	0
			1908	1226	330	342	10			
1	1-C	242	Total	C	N	O	S	0	0	0
			1908	1226	330	342	10			
1	2-A	242	Total	C	N	O	S	0	0	0
			1908	1226	330	342	10			
1	2-B	242	Total	C	N	O	S	0	0	0
			1908	1226	330	342	10			
1	2-D	242	Total	C	N	O	S	0	0	0
			1908	1226	330	342	10			
1	2-C	242	Total	C	N	O	S	0	0	0
			1908	1226	330	342	10			

There are 8 discrepancies between the modelled and reference sequences:

Chain	Residue	Modelled	Actual	Comment	Reference
A	-1	ASP	-	CLONING ARTIFACT	UNP P57083
A	0	PRO	-	CLONING ARTIFACT	UNP P57083
B	-1	ASP	-	CLONING ARTIFACT	UNP P57083
B	0	PRO	-	CLONING ARTIFACT	UNP P57083
D	-1	ASP	-	CLONING ARTIFACT	UNP P57083
D	0	PRO	-	CLONING ARTIFACT	UNP P57083
C	-1	ASP	-	CLONING ARTIFACT	UNP P57083
C	0	PRO	-	CLONING ARTIFACT	UNP P57083

- Molecule 2 is SUGAR (N-ACETYL-D-GLUCOSAMINE) (three-letter code: NAG) (formula: $C_8H_{15}NO_6$).

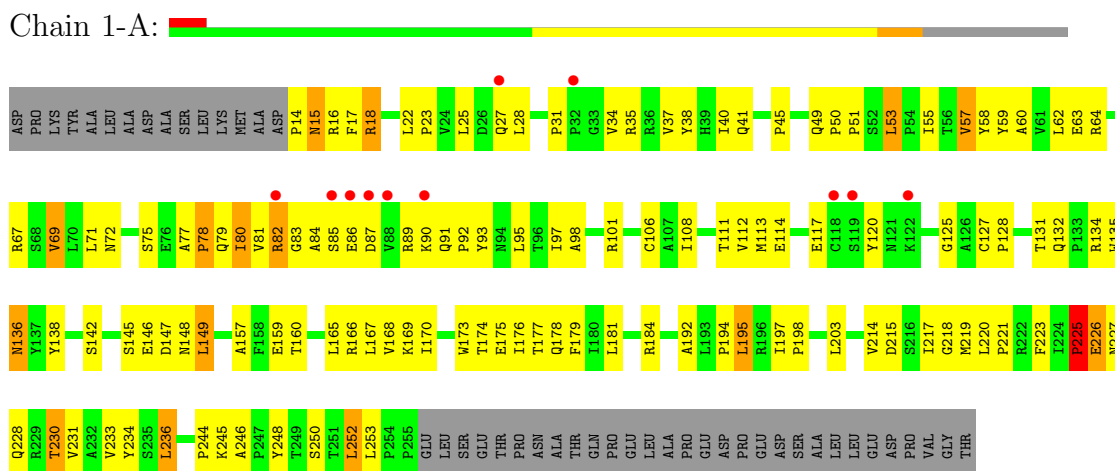


Mol	Chain	Residues	Atoms				ZeroOcc	AltConf
2	1-A	1	Total	C	N	O	0	0
			14	8	1	5		
2	1-B	1	Total	C	N	O	0	0
			14	8	1	5		
2	1-D	1	Total	C	N	O	0	0
			14	8	1	5		
2	1-C	1	Total	C	N	O	0	0
			14	8	1	5		
2	2-A	1	Total	C	N	O	0	0
			14	8	1	5		
2	2-B	1	Total	C	N	O	0	0
			14	8	1	5		
2	2-D	1	Total	C	N	O	0	0
			14	8	1	5		
2	2-C	1	Total	C	N	O	0	0
			14	8	1	5		

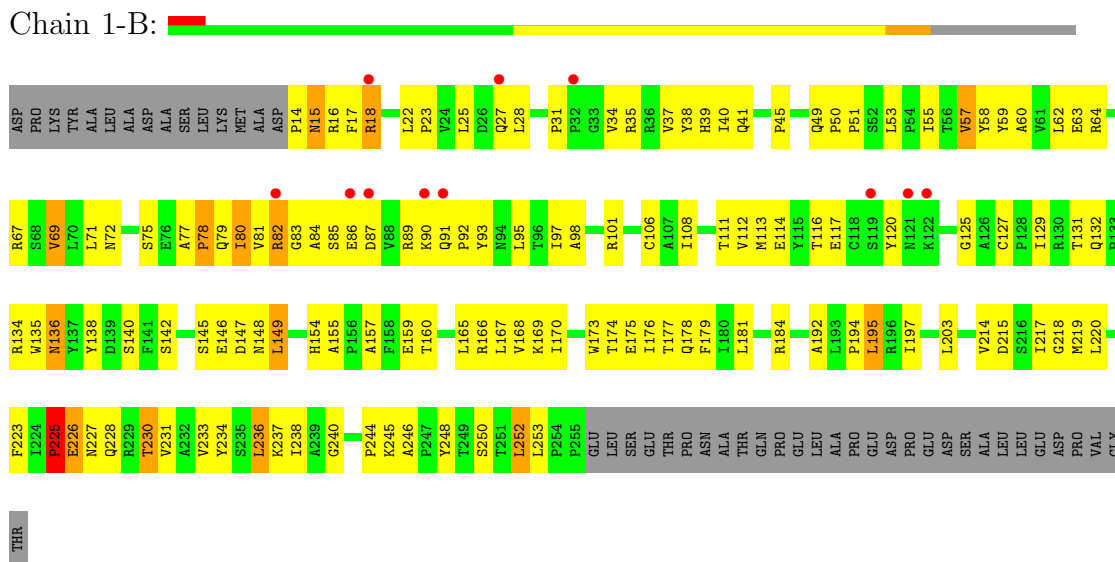
3 Residue-property plots

These plots are drawn for all protein, RNA and DNA chains in the entry. The first graphic for a chain summarises the proportions of errors displayed in the second graphic. The second graphic shows the sequence view annotated by issues in geometry and electron density. Residues are color-coded according to the number of geometric quality criteria for which they contain at least one outlier: green = 0, yellow = 1, orange = 2 and red = 3 or more. A red dot above a residue indicates a poor fit to the electron density ($RSRZ > 2$). Stretches of 2 or more consecutive residues without any outlier are shown as a green connector. Residues present in the sample, but not in the model, are shown in grey.

• Molecule 1: Glycoprotein D

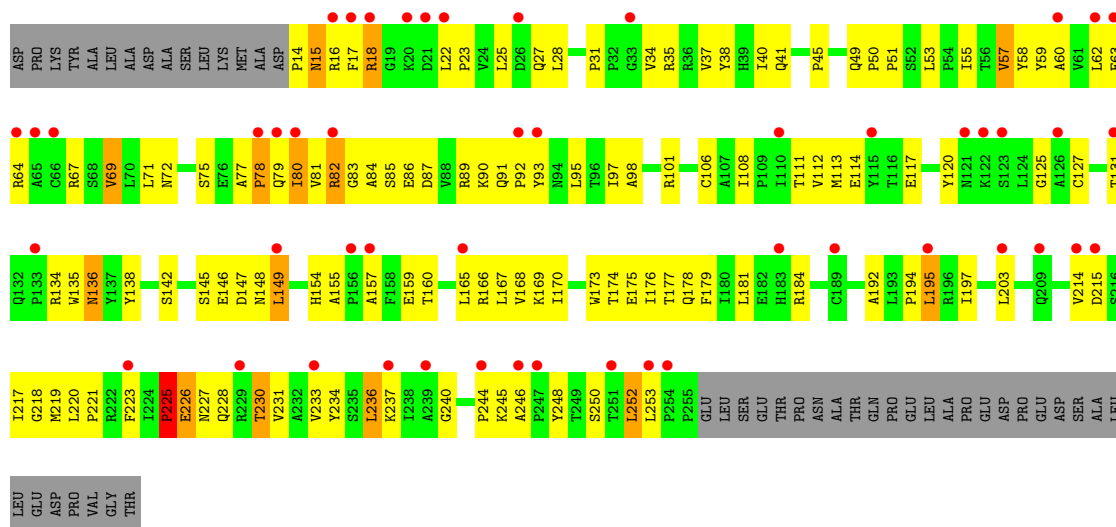


• Molecule 1: Glycoprotein D



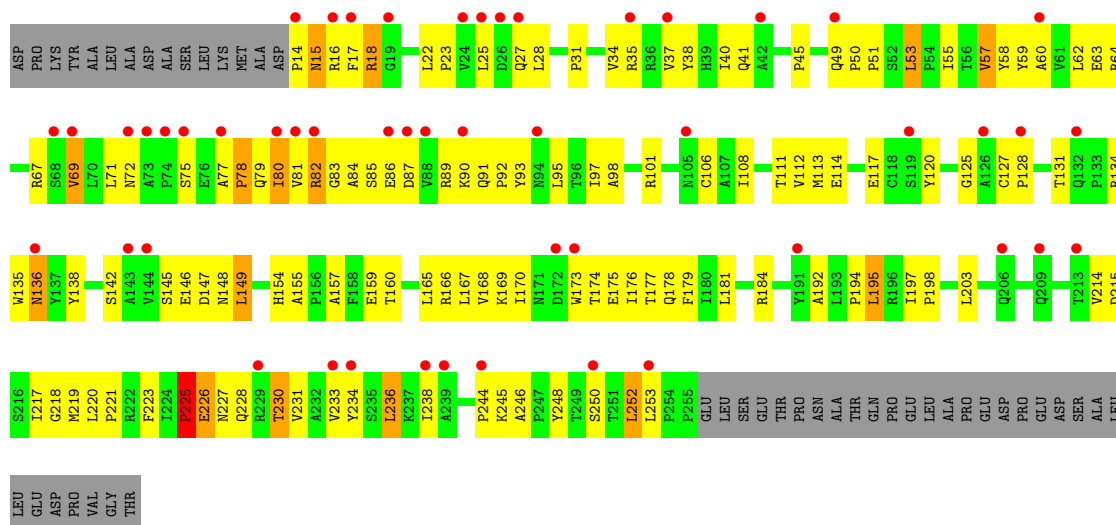
• Molecule 1: Glycoprotein D





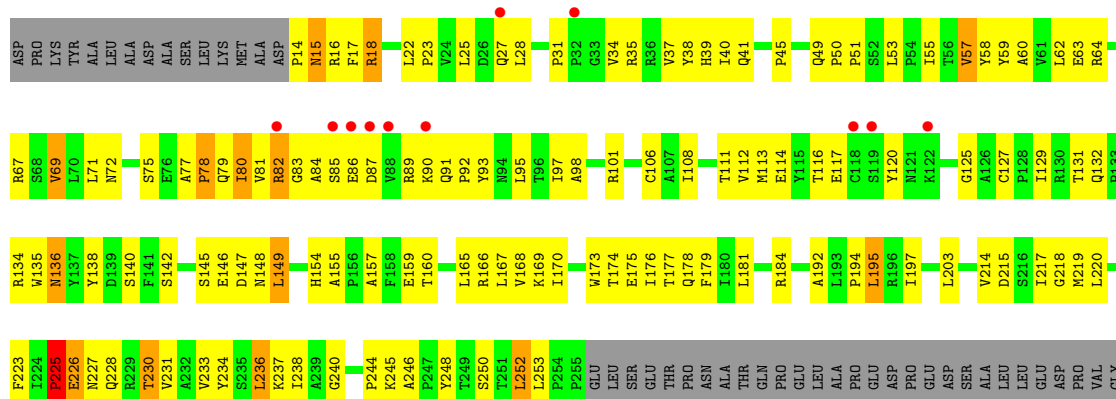
• Molecule 1: Glycoprotein D

Chain 1-C:



• Molecule 1: Glycoprotein D

Chain 2-A:



THR

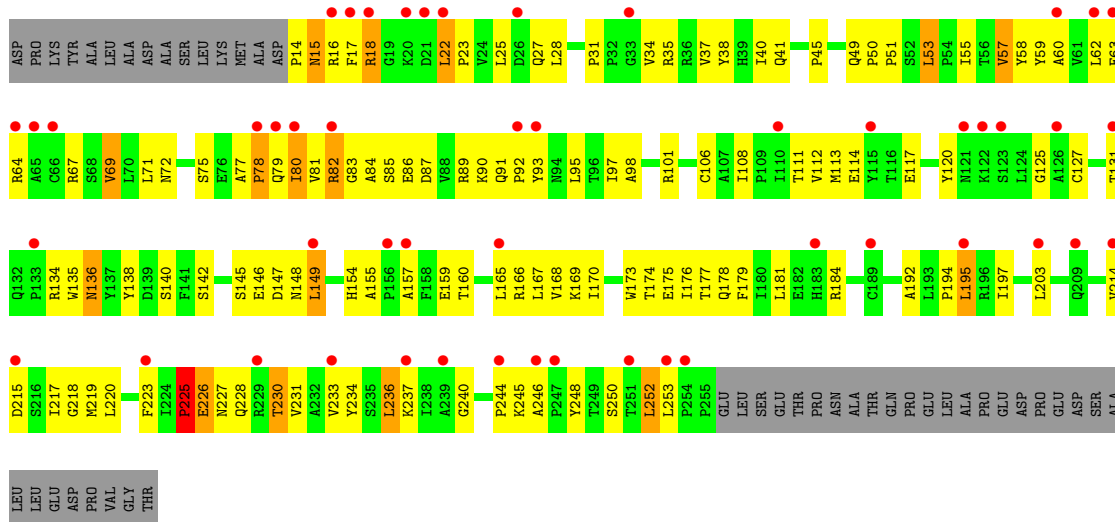
- Molecule 1: Glycoprotein D

Chain 2-B:



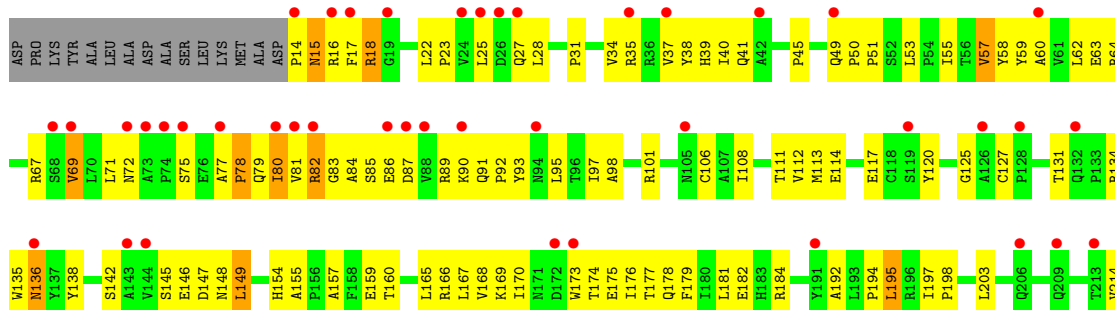
- Molecule 1: Glycoprotein D

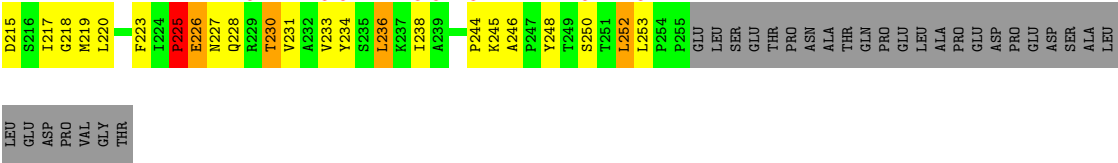
Chain 2-D:



- Molecule 1: Glycoprotein D

Chain 2-C:





4 Data and refinement statistics

Property	Value	Source
Space group	P 4	Depositor
Cell constants a, b, c, α , β , γ	131.42Å 131.42Å 83.27Å 90.00° 90.00° 90.00°	Depositor
Resolution (Å)	30.00 – 2.85 33.39 – 2.80	Depositor EDS
% Data completeness (in resolution range)	88.0 (30.00-2.85) 86.4 (33.39-2.80)	Depositor EDS
R_{merge}	(Not available)	Depositor
R_{sym}	0.08	Depositor
$\langle I/\sigma(I) \rangle$ ¹	2.88 (at 2.81Å)	Xtriage
Refinement program	CNS 1.0	Depositor
R, R_{free}	0.278 , 0.297 0.281 , 0.305	Depositor DCC
R_{free} test set	1506 reflections (5.22%)	DCC
Wilson B-factor (Å ²)	38.6	Xtriage
Anisotropy	0.457	Xtriage
Bulk solvent k_{sol} (e/Å ³), B_{sol} (Å ²)	0.27 , 21.6	EDS
Estimated twinning fraction	0.459 for h,-k,-l	Xtriage
L-test for twinning	$\langle L \rangle = 0.51$, $\langle L^2 \rangle = 0.34$	Xtriage
Outliers	1 of 30374 reflections (0.003%)	Xtriage
F_o, F_c correlation	0.88	EDS
Total number of atoms	15376	wwPDB-VP
Average B, all atoms (Å ²)	33.0	wwPDB-VP

Xtriage's analysis on translational NCS is as follows: *The analyses of the Patterson function reveals a significant off-origin peak that is 52.10 % of the origin peak, indicating pseudo translational symmetry. The chance of finding a peak of this or larger height randomly in a structure without pseudo translational symmetry is equal to 5.1050e-05. The detected translational NCS is most likely also responsible for the elevated intensity ratio.*

¹Intensities estimated from amplitudes.

5 Model quality i

5.1 Standard geometry i

Bond lengths and bond angles in the following residue types are not validated in this section: NAG

The Z score for a bond length (or angle) is the number of standard deviations the observed value is removed from the expected value. A bond length (or angle) with $|Z| > 5$ is considered an outlier worth inspection. RMSZ is the root-mean-square of all Z scores of the bond lengths (or angles).

Mol	Chain	Bond lengths		Bond angles	
		RMSZ	# $ Z > 5$	RMSZ	# $ Z > 5$
1	1-A	0.52	1/1966 (0.1%)	0.75	2/2688 (0.1%)
1	1-B	0.52	1/1966 (0.1%)	0.75	2/2688 (0.1%)
1	1-C	0.52	1/1966 (0.1%)	0.75	2/2688 (0.1%)
1	1-D	0.52	1/1966 (0.1%)	0.75	2/2688 (0.1%)
1	2-A	0.52	1/1966 (0.1%)	0.75	2/2688 (0.1%)
1	2-B	0.52	1/1966 (0.1%)	0.75	2/2688 (0.1%)
1	2-C	0.52	1/1966 (0.1%)	0.75	2/2688 (0.1%)
1	2-D	0.52	1/1966 (0.1%)	0.75	2/2688 (0.1%)
All	All	0.52	8/15728 (0.1%)	0.75	16/21504 (0.1%)

All (8) bond length outliers are listed below:

Mol	Chain	Res	Type	Atoms	Z	Observed(Å)	Ideal(Å)
1	1-B	18	ARG	CB-CG	-9.11	1.27	1.52
1	2-A	18	ARG	CB-CG	-9.11	1.27	1.52
1	1-C	18	ARG	CB-CG	-9.10	1.27	1.52
1	1-D	18	ARG	CB-CG	-9.10	1.27	1.52
1	1-A	18	ARG	CB-CG	-9.08	1.28	1.52
1	2-B	18	ARG	CB-CG	-9.08	1.28	1.52
1	2-C	18	ARG	CB-CG	-9.06	1.28	1.52
1	2-D	18	ARG	CB-CG	-9.06	1.28	1.52

All (16) bond angle outliers are listed below:

Mol	Chain	Res	Type	Atoms	Z	Observed(°)	Ideal(°)
1	1-D	18	ARG	CB-CG-CD	7.98	132.35	111.60
1	2-C	18	ARG	CB-CG-CD	7.98	132.34	111.60
1	1-A	18	ARG	CB-CG-CD	7.97	132.32	111.60
1	1-B	18	ARG	CB-CG-CD	7.97	132.32	111.60
1	2-A	18	ARG	CB-CG-CD	7.97	132.32	111.60

Continued on next page...

Continued from previous page...

Mol	Chain	Res	Type	Atoms	Z	Observed(°)	Ideal(°)
1	2-B	18	ARG	CB-CG-CD	7.97	132.32	111.60
1	2-D	18	ARG	CB-CG-CD	7.97	132.32	111.60
1	1-C	18	ARG	CB-CG-CD	7.97	132.32	111.60
1	1-D	18	ARG	CA-CB-CG	6.99	128.77	113.40
1	1-A	18	ARG	CA-CB-CG	6.95	128.70	113.40
1	2-B	18	ARG	CA-CB-CG	6.95	128.70	113.40
1	2-C	18	ARG	CA-CB-CG	6.95	128.69	113.40
1	1-C	18	ARG	CA-CB-CG	6.95	128.69	113.40
1	2-D	18	ARG	CA-CB-CG	6.94	128.67	113.40
1	1-B	18	ARG	CA-CB-CG	6.94	128.67	113.40
1	2-A	18	ARG	CA-CB-CG	6.94	128.67	113.40

There are no chirality outliers.

There are no planarity outliers.

5.2 Close contacts ⓘ

In the following table, the Non-H and H(model) columns list the number of non-hydrogen atoms and hydrogen atoms in the chain respectively. The H(added) column lists the number of hydrogens added by MolProbity. The Clashes column lists the number of clashes within the asymmetric unit, and the number in parentheses is this value normalized per 1000 atoms of the molecule in the chain. The Symm-Clashes column gives symmetry related clashes, in the same way as for the Clashes column.

Mol	Chain	Non-H	H(model)	H(added)	Clashes	Symm-Clashes
1	1-A	1908	0	1893	159	0
1	1-B	1908	0	1893	155	0
1	1-C	1908	0	1893	150	0
1	1-D	1908	0	1893	143	0
1	2-A	1908	0	1893	155	0
1	2-B	1908	0	1893	159	0
1	2-C	1908	0	1893	146	0
1	2-D	1908	0	1893	149	0
2	1-A	14	0	13	0	0
2	1-B	14	0	13	0	0
2	1-C	14	0	13	0	0
2	1-D	14	0	13	0	0
2	2-A	14	0	13	0	0
2	2-B	14	0	13	0	0
2	2-C	14	0	13	0	0
2	2-D	14	0	13	0	0
All	All	15376	0	15248	1026	0

Clashscore is defined as the number of clashes calculated for the entry per 1000 atoms (including hydrogens) of the entry. The overall clashscore for this entry is 34.

All (1026) close contacts within the same asymmetric unit are listed below.

Atom-1	Atom-2	Distance(Å)	Clash(Å)
1:A:37:VAL:CG1	1:B:15:ASN:ND2	1.81	1.43
1:A:15:ASN:ND2	1:B:37:VAL:CG1	1.81	1.43
1:A:15:ASN:ND2	1:B:37:VAL:CG1	1.82	1.42
1:A:37:VAL:CG1	1:B:15:ASN:ND2	1.82	1.42
1:A:37:VAL:HG11	1:B:15:ASN:ND2	1.39	1.34
1:A:15:ASN:ND2	1:B:37:VAL:HG11	1.39	1.34
1:D:37:VAL:CG1	1:C:15:ASN:ND2	1.93	1.30
1:D:37:VAL:CG1	1:C:15:ASN:ND2	1.93	1.30
1:A:15:ASN:ND2	1:B:37:VAL:HG11	1.40	1.25
1:A:37:VAL:HG11	1:B:15:ASN:ND2	1.40	1.25
1:D:15:ASN:ND2	1:C:37:VAL:CG1	1.98	1.24
1:D:15:ASN:ND2	1:C:37:VAL:CG1	1.98	1.24
1:D:37:VAL:HG11	1:C:15:ASN:ND2	1.52	1.24
1:D:37:VAL:HG11	1:C:15:ASN:ND2	1.51	1.24
1:D:15:ASN:ND2	1:C:37:VAL:HG11	1.60	1.13
1:D:15:ASN:ND2	1:C:37:VAL:HG11	1.60	1.10
1:D:25:LEU:HD22	1:C:25:LEU:HD22	1.18	1.09
1:D:25:LEU:HD22	1:C:25:LEU:HD22	1.18	1.09
1:A:25:LEU:HD22	1:B:25:LEU:HD22	1.08	1.07
1:A:25:LEU:HD22	1:B:25:LEU:HD22	1.08	1.07
1:C:57:VAL:HG13	1:C:178:GLN:HB3	1.39	1.02
1:D:57:VAL:HG13	1:D:178:GLN:HB3	1.39	1.02
1:A:57:VAL:HG13	1:A:178:GLN:HB3	1.39	1.01
1:B:57:VAL:HG13	1:B:178:GLN:HB3	1.39	1.01
1:B:57:VAL:HG13	1:B:178:GLN:HB3	1.39	1.01
1:A:57:VAL:HG13	1:A:178:GLN:HB3	1.39	1.01
1:C:57:VAL:HG13	1:C:178:GLN:HB3	1.39	1.00
1:D:57:VAL:HG13	1:D:178:GLN:HB3	1.39	1.00
1:D:15:ASN:HD21	1:C:37:VAL:CG1	1.72	1.00
1:D:37:VAL:CG1	1:C:15:ASN:HD21	1.67	0.95
1:A:15:ASN:ND2	1:B:37:VAL:HG12	1.79	0.95
1:A:37:VAL:HG12	1:B:15:ASN:ND2	1.79	0.95
1:B:226:GLU:CD	1:B:226:GLU:H	1.70	0.95
1:D:37:VAL:HG11	1:C:15:ASN:HD21	1.20	0.95
1:A:226:GLU:CD	1:A:226:GLU:H	1.70	0.95
1:D:37:VAL:CG1	1:C:15:ASN:HD21	1.66	0.95
1:A:37:VAL:HG12	1:B:15:ASN:ND2	1.79	0.94
1:A:15:ASN:ND2	1:B:37:VAL:HG12	1.79	0.94
1:C:226:GLU:H	1:C:226:GLU:CD	1.71	0.94

Continued on next page...

Continued from previous page...

Atom-1	Atom-2	Distance(Å)	Clash(Å)
1:B:89:ARG:HB3	1:B:89:ARG:NH1	1.83	0.94
1:C:89:ARG:NH1	1:C:89:ARG:HB3	1.83	0.94
1:A:89:ARG:NH1	1:A:89:ARG:HB3	1.83	0.94
1:C:62:LEU:HD13	1:C:69:VAL:HG22	1.50	0.93
1:D:89:ARG:NH1	1:D:89:ARG:HB3	1.83	0.93
1:A:62:LEU:HD13	1:A:69:VAL:HG22	1.51	0.93
1:B:62:LEU:HD13	1:B:69:VAL:HG22	1.51	0.93
1:D:89:ARG:HB3	1:D:89:ARG:NH1	1.83	0.93
1:A:37:VAL:CG1	1:B:15:ASN:HD21	1.61	0.93
1:C:226:GLU:H	1:C:226:GLU:CD	1.71	0.93
1:A:15:ASN:HD21	1:B:37:VAL:CG1	1.61	0.93
1:D:62:LEU:HD13	1:D:69:VAL:HG22	1.51	0.93
1:A:226:GLU:H	1:A:226:GLU:CD	1.71	0.92
1:B:226:GLU:H	1:B:226:GLU:CD	1.71	0.92
1:A:89:ARG:HB3	1:A:89:ARG:NH1	1.83	0.92
1:B:89:ARG:NH1	1:B:89:ARG:HB3	1.83	0.92
1:C:89:ARG:HB3	1:C:89:ARG:NH1	1.83	0.92
1:A:25:LEU:HD22	1:B:25:LEU:CD2	1.97	0.92
1:A:25:LEU:CD2	1:B:25:LEU:HD22	1.97	0.92
1:A:15:ASN:HD21	1:B:37:VAL:CG1	1.61	0.91
1:A:37:VAL:CG1	1:B:15:ASN:HD21	1.61	0.91
1:D:226:GLU:H	1:D:226:GLU:CD	1.71	0.91
1:A:25:LEU:CD2	1:B:25:LEU:HD22	1.97	0.91
1:A:25:LEU:HD22	1:B:25:LEU:CD2	1.97	0.91
1:D:226:GLU:CD	1:D:226:GLU:H	1.71	0.91
1:D:62:LEU:HD13	1:D:69:VAL:HG22	1.51	0.91
1:A:15:ASN:HD21	1:B:37:VAL:HG11	1.14	0.91
1:A:37:VAL:HG11	1:B:15:ASN:HD21	1.14	0.91
1:C:62:LEU:HD13	1:C:69:VAL:HG22	1.50	0.91
1:B:62:LEU:HD13	1:B:69:VAL:HG22	1.51	0.91
1:A:62:LEU:HD13	1:A:69:VAL:HG22	1.51	0.91
1:D:15:ASN:HD21	1:C:37:VAL:CG1	1.72	0.90
1:D:37:VAL:HG12	1:C:15:ASN:ND2	1.89	0.87
1:D:15:ASN:ND2	1:C:37:VAL:HG12	1.89	0.86
1:D:37:VAL:HG11	1:C:15:ASN:HD21	1.17	0.86
1:D:15:ASN:ND2	1:C:37:VAL:HG12	1.89	0.86
1:D:228:GLN:HA	1:D:231:VAL:HG22	1.59	0.85
1:D:15:ASN:HD21	1:C:37:VAL:HG11	1.29	0.85
1:B:228:GLN:HA	1:B:231:VAL:HG22	1.59	0.85
1:A:228:GLN:HA	1:A:231:VAL:HG22	1.59	0.85
1:A:228:GLN:HA	1:A:231:VAL:HG22	1.59	0.85
1:C:228:GLN:HA	1:C:231:VAL:HG22	1.59	0.85

Continued on next page...

Continued from previous page...

Atom-1	Atom-2	Distance(Å)	Clash(Å)
1:B:228:GLN:HA	1:B:231:VAL:HG22	1.59	0.85
1:D:228:GLN:HA	1:D:231:VAL:HG22	1.58	0.85
1:C:228:GLN:HA	1:C:231:VAL:HG22	1.59	0.85
1:C:89:ARG:HH11	1:C:89:ARG:HB3	1.41	0.84
1:C:89:ARG:HH11	1:C:89:ARG:HB3	1.41	0.83
1:A:37:VAL:HG11	1:B:15:ASN:HD21	1.14	0.83
1:D:37:VAL:HG12	1:C:15:ASN:ND2	1.90	0.83
1:A:15:ASN:HD21	1:B:37:VAL:HG11	1.14	0.83
1:D:89:ARG:HH11	1:D:89:ARG:HB3	1.41	0.83
1:A:37:VAL:CG1	1:B:15:ASN:CG	2.46	0.82
1:A:15:ASN:CG	1:B:37:VAL:CG1	2.46	0.82
1:B:89:ARG:HB3	1:B:89:ARG:HH11	1.41	0.82
1:A:89:ARG:HB3	1:A:89:ARG:HH11	1.41	0.82
1:A:89:ARG:HH11	1:A:89:ARG:HB3	1.41	0.82
1:B:89:ARG:HH11	1:B:89:ARG:HB3	1.41	0.82
1:A:15:ASN:CG	1:B:37:VAL:CG1	2.48	0.81
1:A:37:VAL:CG1	1:B:15:ASN:CG	2.48	0.81
1:D:169:LYS:HG3	1:D:174:THR:HG22	1.63	0.81
1:D:89:ARG:HB3	1:D:89:ARG:HH11	1.41	0.81
1:D:25:LEU:HD22	1:C:25:LEU:CD2	2.08	0.80
1:B:169:LYS:HG3	1:B:174:THR:HG22	1.63	0.80
1:A:169:LYS:HG3	1:A:174:THR:HG22	1.63	0.80
1:D:169:LYS:HG3	1:D:174:THR:HG22	1.63	0.80
1:A:169:LYS:HG3	1:A:174:THR:HG22	1.63	0.79
1:B:169:LYS:HG3	1:B:174:THR:HG22	1.63	0.79
1:D:25:LEU:CD2	1:C:25:LEU:HD22	2.09	0.79
1:C:169:LYS:HG3	1:C:174:THR:HG22	1.63	0.79
1:C:169:LYS:HG3	1:C:174:THR:HG22	1.63	0.79
1:D:15:ASN:HD21	1:C:37:VAL:HG11	1.29	0.76
1:A:15:ASN:CG	1:B:37:VAL:HG12	2.07	0.75
1:A:37:VAL:HG12	1:B:15:ASN:CG	2.07	0.75
1:C:79:GLN:HA	1:C:82:ARG:HB2	1.69	0.75
1:A:79:GLN:HA	1:A:82:ARG:HB2	1.69	0.74
1:D:79:GLN:HA	1:D:82:ARG:HB2	1.69	0.74
1:B:79:GLN:HA	1:B:82:ARG:HB2	1.69	0.74
1:A:37:VAL:HG12	1:B:15:ASN:CG	2.06	0.74
1:A:15:ASN:CG	1:B:37:VAL:HG12	2.06	0.74
1:A:37:VAL:HG13	1:B:15:ASN:O	1.88	0.74
1:A:15:ASN:O	1:B:37:VAL:HG13	1.88	0.74
1:B:79:GLN:HA	1:B:82:ARG:HB2	1.69	0.74
1:A:79:GLN:HA	1:A:82:ARG:HB2	1.69	0.74
1:C:79:GLN:HA	1:C:82:ARG:HB2	1.69	0.73

Continued on next page...

Continued from previous page...

Atom-1	Atom-2	Distance(Å)	Clash(Å)
1:D:25:LEU:HD22	1:C:25:LEU:CD2	2.09	0.73
1:D:79:GLN:HA	1:D:82:ARG:HB2	1.69	0.73
1:A:15:ASN:O	1:B:37:VAL:HG13	1.89	0.73
1:A:37:VAL:HG13	1:B:15:ASN:O	1.89	0.73
1:B:223:PHE:HB3	1:B:227:ASN:HB3	1.71	0.72
1:A:223:PHE:HB3	1:A:227:ASN:HB3	1.71	0.72
1:D:223:PHE:HB3	1:D:227:ASN:HB3	1.71	0.72
1:C:223:PHE:HB3	1:C:227:ASN:HB3	1.71	0.72
1:C:85:SER:O	1:C:89:ARG:HG3	1.91	0.71
1:A:223:PHE:HB3	1:A:227:ASN:HB3	1.71	0.71
1:B:223:PHE:HB3	1:B:227:ASN:HB3	1.71	0.71
1:D:85:SER:O	1:D:89:ARG:HG3	1.91	0.71
1:A:85:SER:O	1:A:89:ARG:HG3	1.91	0.71
1:B:85:SER:O	1:B:89:ARG:HG3	1.91	0.71
1:D:223:PHE:HB3	1:D:227:ASN:HB3	1.71	0.71
1:B:85:SER:O	1:B:89:ARG:HG3	1.91	0.71
1:A:85:SER:O	1:A:89:ARG:HG3	1.91	0.71
1:D:85:SER:O	1:D:89:ARG:HG3	1.91	0.71
1:C:223:PHE:HB3	1:C:227:ASN:HB3	1.71	0.71
1:C:85:SER:O	1:C:89:ARG:HG3	1.91	0.71
1:A:15:ASN:HD22	1:B:37:VAL:HG11	1.55	0.70
1:A:37:VAL:HG11	1:B:15:ASN:HD22	1.55	0.70
1:D:37:VAL:CG1	1:C:15:ASN:CG	2.60	0.69
1:C:89:ARG:CB	1:C:89:ARG:HH11	2.05	0.69
1:B:89:ARG:CB	1:B:89:ARG:HH11	2.05	0.69
1:A:89:ARG:HH11	1:A:89:ARG:CB	2.05	0.69
1:D:37:VAL:CG1	1:C:15:ASN:CG	2.59	0.69
1:C:89:ARG:HH11	1:C:89:ARG:CB	2.05	0.68
1:D:25:LEU:CD2	1:C:25:LEU:HD22	2.10	0.68
1:D:89:ARG:HH11	1:D:89:ARG:CB	2.06	0.68
1:C:79:GLN:HE22	1:C:82:ARG:HD3	1.59	0.68
1:A:89:ARG:CB	1:A:89:ARG:HH11	2.05	0.68
1:A:79:GLN:HE22	1:A:82:ARG:HD3	1.59	0.68
1:B:89:ARG:CB	1:B:89:ARG:HH11	2.05	0.68
1:B:79:GLN:HE22	1:B:82:ARG:HD3	1.59	0.68
1:D:79:GLN:HE22	1:D:82:ARG:HD3	1.59	0.68
1:B:79:GLN:HE22	1:B:82:ARG:HD3	1.59	0.68
1:A:79:GLN:HE22	1:A:82:ARG:HD3	1.59	0.68
1:C:111:THR:HA	1:C:134:ARG:O	1.94	0.67
1:B:111:THR:HA	1:B:134:ARG:O	1.94	0.67
1:A:111:THR:HA	1:A:134:ARG:O	1.94	0.67
1:D:89:ARG:HH11	1:D:89:ARG:CB	2.05	0.67

Continued on next page...

Continued from previous page...

Atom-1	Atom-2	Distance(Å)	Clash(Å)
1:C:79:GLN:HE22	1:C:82:ARG:HD3	1.59	0.67
1:A:111:THR:HA	1:A:134:ARG:O	1.94	0.67
1:B:111:THR:HA	1:B:134:ARG:O	1.94	0.67
1:D:111:THR:HA	1:D:134:ARG:O	1.94	0.67
1:B:77:ALA:HB3	1:B:78:PRO:HD3	1.76	0.67
1:A:77:ALA:HB3	1:A:78:PRO:HD3	1.76	0.67
1:C:77:ALA:HB3	1:C:78:PRO:HD3	1.76	0.67
1:A:35:ARG:NH1	1:B:16:ARG:HG3	2.10	0.67
1:C:111:THR:HA	1:C:134:ARG:O	1.94	0.67
1:A:16:ARG:HG3	1:B:35:ARG:NH1	2.10	0.67
1:D:79:GLN:HE22	1:D:82:ARG:HD3	1.59	0.67
1:D:111:THR:HA	1:D:134:ARG:O	1.94	0.67
1:D:77:ALA:HB3	1:D:78:PRO:HD3	1.76	0.66
1:D:17:PHE:HA	1:C:38:TYR:CE1	2.31	0.66
1:D:160:THR:HG22	1:D:195:LEU:HD12	1.77	0.66
1:D:17:PHE:HD1	1:C:38:TYR:CE2	2.14	0.66
1:D:160:THR:HG22	1:D:195:LEU:HD12	1.77	0.66
1:C:77:ALA:HB3	1:C:78:PRO:HD3	1.76	0.66
1:A:160:THR:HG22	1:A:195:LEU:HD12	1.77	0.65
1:B:160:THR:HG22	1:B:195:LEU:HD12	1.77	0.65
1:A:77:ALA:HB3	1:A:78:PRO:HD3	1.76	0.65
1:B:77:ALA:HB3	1:B:78:PRO:HD3	1.76	0.65
1:C:64:ARG:HB2	1:C:67:ARG:HG3	1.79	0.65
1:D:37:VAL:HG13	1:C:15:ASN:O	1.96	0.65
1:C:160:THR:HG22	1:C:195:LEU:HD12	1.77	0.65
1:A:236:LEU:N	1:A:236:LEU:HD22	2.12	0.65
1:C:236:LEU:HD22	1:C:236:LEU:N	2.12	0.65
1:D:77:ALA:HB3	1:D:78:PRO:HD3	1.77	0.65
1:B:236:LEU:HD22	1:B:236:LEU:N	2.12	0.65
1:B:64:ARG:HB2	1:B:67:ARG:HG3	1.79	0.65
1:A:16:ARG:HG3	1:B:35:ARG:NH1	2.11	0.65
1:A:35:ARG:NH1	1:B:16:ARG:HG3	2.11	0.65
1:A:64:ARG:HB2	1:A:67:ARG:HG3	1.79	0.65
1:A:37:VAL:HG11	1:B:15:ASN:HD22	1.54	0.65
1:A:15:ASN:HD22	1:B:37:VAL:HG11	1.54	0.65
1:D:236:LEU:HD22	1:D:236:LEU:N	2.12	0.65
1:D:17:PHE:HA	1:C:38:TYR:CE1	2.32	0.65
1:C:160:THR:HG22	1:C:195:LEU:HD12	1.77	0.65
1:B:160:THR:HG22	1:B:195:LEU:HD12	1.77	0.64
1:D:64:ARG:HB2	1:D:67:ARG:HG3	1.79	0.64
1:A:160:THR:HG22	1:A:195:LEU:HD12	1.77	0.64
1:C:236:LEU:N	1:C:236:LEU:HD22	2.12	0.64

Continued on next page...

Continued from previous page...

Atom-1	Atom-2	Distance(Å)	Clash(Å)
1:D:37:VAL:HG13	1:C:15:ASN:O	1.96	0.64
1:D:17:PHE:HD1	1:C:38:TYR:CE2	2.15	0.64
1:B:236:LEU:N	1:B:236:LEU:HD22	2.12	0.64
1:A:236:LEU:HD22	1:A:236:LEU:N	2.12	0.64
1:D:64:ARG:HB2	1:D:67:ARG:HG3	1.79	0.64
1:A:64:ARG:HB2	1:A:67:ARG:HG3	1.79	0.63
1:B:64:ARG:HB2	1:B:67:ARG:HG3	1.79	0.63
1:D:236:LEU:N	1:D:236:LEU:HD22	2.12	0.63
1:C:64:ARG:HB2	1:C:67:ARG:HG3	1.79	0.63
1:C:169:LYS:CG	1:C:174:THR:HG22	2.29	0.62
1:D:15:ASN:CG	1:C:37:VAL:CG1	2.68	0.62
1:A:169:LYS:CG	1:A:174:THR:HG22	2.29	0.62
1:B:169:LYS:CG	1:B:174:THR:HG22	2.29	0.62
1:D:223:PHE:HZ	1:C:234:TYR:HE1	1.46	0.62
1:B:228:GLN:HA	1:B:231:VAL:CG2	2.30	0.62
1:D:35:ARG:NH1	1:C:16:ARG:HG3	2.15	0.62
1:A:228:GLN:HA	1:A:231:VAL:CG2	2.30	0.62
1:D:223:PHE:HZ	1:C:234:TYR:HE1	1.48	0.62
1:C:228:GLN:HA	1:C:231:VAL:CG2	2.30	0.62
1:D:226:GLU:N	1:D:226:GLU:CD	2.51	0.62
1:D:37:VAL:HG12	1:C:15:ASN:CG	2.20	0.62
1:D:15:ASN:HD21	1:C:37:VAL:HG12	1.54	0.62
1:D:169:LYS:CG	1:D:174:THR:HG22	2.29	0.62
1:C:64:ARG:HB2	1:C:67:ARG:CG	2.30	0.61
1:B:169:LYS:CG	1:B:174:THR:HG22	2.29	0.61
1:B:64:ARG:HB2	1:B:67:ARG:CG	2.31	0.61
1:A:169:LYS:CG	1:A:174:THR:HG22	2.29	0.61
1:C:169:LYS:CG	1:C:174:THR:HG22	2.29	0.61
1:A:64:ARG:HB2	1:A:67:ARG:CG	2.31	0.61
1:D:64:ARG:HB2	1:D:67:ARG:CG	2.31	0.61
1:D:15:ASN:CG	1:C:37:VAL:CG1	2.67	0.61
1:A:64:ARG:HB2	1:A:67:ARG:CG	2.31	0.61
1:B:145:SER:OG	1:B:147:ASP:OD2	2.18	0.61
1:B:64:ARG:HB2	1:B:67:ARG:CG	2.31	0.61
1:D:35:ARG:NH1	1:C:16:ARG:HG3	2.15	0.61
1:A:145:SER:OG	1:A:147:ASP:OD2	2.18	0.61
1:D:169:LYS:CG	1:D:174:THR:HG22	2.29	0.61
1:D:15:ASN:HD21	1:C:37:VAL:HG12	1.54	0.61
1:C:145:SER:OG	1:C:147:ASP:OD2	2.18	0.61
1:A:223:PHE:HZ	1:B:234:TYR:HE1	1.49	0.60
1:A:234:TYR:HE1	1:B:223:PHE:HZ	1.49	0.60
1:D:145:SER:OG	1:D:147:ASP:OD2	2.18	0.60

Continued on next page...

Continued from previous page...

Atom-1	Atom-2	Distance(Å)	Clash(Å)
1:D:145:SER:OG	1:D:147:ASP:OD2	2.18	0.60
1:D:37:VAL:HG12	1:C:15:ASN:CG	2.19	0.60
1:C:64:ARG:HB2	1:C:67:ARG:CG	2.31	0.60
1:D:136:ASN:HD22	1:D:219:MET:HG2	1.67	0.60
1:D:64:ARG:HB2	1:D:67:ARG:CG	2.31	0.60
1:D:136:ASN:HD22	1:D:219:MET:HG2	1.67	0.60
1:C:60:ALA:O	1:C:181:LEU:HD12	2.02	0.60
1:A:60:ALA:O	1:A:181:LEU:HD12	2.02	0.60
1:A:145:SER:OG	1:A:147:ASP:OD2	2.18	0.60
1:A:63:GLU:HB2	1:A:248:TYR:CZ	2.37	0.60
1:B:60:ALA:O	1:B:181:LEU:HD12	2.02	0.60
1:D:63:GLU:HB2	1:D:248:TYR:CZ	2.37	0.60
1:B:63:GLU:HB2	1:B:248:TYR:CZ	2.37	0.60
1:B:145:SER:OG	1:B:147:ASP:OD2	2.18	0.60
1:D:60:ALA:O	1:D:181:LEU:HD12	2.02	0.60
1:B:138:TYR:O	1:B:142:SER:HB2	2.02	0.60
1:A:138:TYR:O	1:A:142:SER:HB2	2.02	0.60
1:C:138:TYR:O	1:C:142:SER:HB2	2.02	0.60
1:D:63:GLU:HB2	1:D:248:TYR:CZ	2.37	0.59
1:B:136:ASN:HD22	1:B:219:MET:HG2	1.67	0.59
1:D:228:GLN:HA	1:D:231:VAL:CG2	2.30	0.59
1:A:136:ASN:HD22	1:A:219:MET:HG2	1.67	0.59
1:C:145:SER:OG	1:C:147:ASP:OD2	2.18	0.59
1:A:136:ASN:HD22	1:A:219:MET:HG2	1.67	0.59
1:C:63:GLU:HB2	1:C:248:TYR:CZ	2.37	0.59
1:B:60:ALA:O	1:B:181:LEU:HD12	2.02	0.59
1:A:60:ALA:O	1:A:181:LEU:HD12	2.02	0.59
1:B:136:ASN:HD22	1:B:219:MET:HG2	1.67	0.59
1:D:60:ALA:O	1:D:181:LEU:HD12	2.02	0.59
1:C:86:GLU:OE2	1:C:89:ARG:HD3	2.02	0.59
1:C:60:ALA:O	1:C:181:LEU:HD12	2.02	0.59
1:A:86:GLU:OE2	1:A:89:ARG:HD3	2.02	0.59
1:B:86:GLU:OE2	1:B:89:ARG:HD3	2.02	0.59
1:C:138:TYR:O	1:C:142:SER:HB2	2.02	0.59
1:C:136:ASN:HD22	1:C:219:MET:HG2	1.67	0.59
1:D:138:TYR:O	1:D:142:SER:HB2	2.02	0.59
1:D:15:ASN:O	1:C:37:VAL:HG13	2.02	0.59
1:D:86:GLU:OE2	1:D:89:ARG:HD3	2.02	0.59
1:C:63:GLU:HB2	1:C:248:TYR:CZ	2.37	0.59
1:C:136:ASN:HD22	1:C:219:MET:HG2	1.67	0.59
1:D:138:TYR:O	1:D:142:SER:HB2	2.02	0.59
1:C:86:GLU:OE2	1:C:89:ARG:HD3	2.02	0.59

Continued on next page...

Continued from previous page...

Atom-1	Atom-2	Distance(Å)	Clash(Å)
1:A:234:TYR:HE1	1:B:223:PHE:HZ	1.50	0.58
1:A:228:GLN:HA	1:A:231:VAL:CG2	2.30	0.58
1:A:138:TYR:O	1:A:142:SER:HB2	2.02	0.58
1:A:223:PHE:HZ	1:B:234:TYR:HE1	1.50	0.58
1:B:228:GLN:HA	1:B:231:VAL:CG2	2.30	0.58
1:B:138:TYR:O	1:B:142:SER:HB2	2.02	0.58
1:D:15:ASN:O	1:C:37:VAL:HG13	2.03	0.58
1:C:226:GLU:N	1:C:226:GLU:CD	2.51	0.58
1:B:63:GLU:HB2	1:B:248:TYR:CZ	2.37	0.58
1:D:15:ASN:CG	1:C:37:VAL:HG12	2.24	0.58
1:A:63:GLU:HB2	1:A:248:TYR:CZ	2.37	0.58
1:B:86:GLU:OE2	1:B:89:ARG:HD3	2.02	0.58
1:D:86:GLU:OE2	1:D:89:ARG:HD3	2.02	0.58
1:A:86:GLU:OE2	1:A:89:ARG:HD3	2.02	0.58
1:D:84:ALA:O	1:D:89:ARG:HD2	2.04	0.58
1:A:84:ALA:O	1:A:89:ARG:HD2	2.04	0.58
1:C:84:ALA:O	1:C:89:ARG:HD2	2.04	0.58
1:B:84:ALA:O	1:B:89:ARG:HD2	2.04	0.58
1:C:228:GLN:HA	1:C:231:VAL:CG2	2.30	0.58
1:B:147:ASP:O	1:B:149:LEU:HD22	2.04	0.58
1:A:147:ASP:O	1:A:149:LEU:HD22	2.04	0.58
1:D:17:PHE:HD1	1:C:38:TYR:CZ	2.22	0.57
1:D:147:ASP:O	1:D:149:LEU:HD22	2.04	0.57
1:A:147:ASP:O	1:A:149:LEU:HD22	2.04	0.57
1:C:147:ASP:O	1:C:149:LEU:HD22	2.04	0.57
1:B:159:GLU:CD	1:B:159:GLU:H	2.08	0.57
1:B:147:ASP:O	1:B:149:LEU:HD22	2.04	0.57
1:A:159:GLU:CD	1:A:159:GLU:H	2.08	0.57
1:D:15:ASN:CG	1:C:37:VAL:HG12	2.24	0.57
1:D:38:TYR:CE2	1:C:17:PHE:HD1	2.23	0.57
1:D:37:VAL:HG12	1:C:15:ASN:HD21	1.55	0.57
1:D:84:ALA:O	1:D:89:ARG:HD2	2.04	0.57
1:D:159:GLU:H	1:D:159:GLU:CD	2.07	0.57
1:D:147:ASP:O	1:D:149:LEU:HD22	2.04	0.57
1:C:147:ASP:O	1:C:149:LEU:HD22	2.05	0.57
1:C:159:GLU:H	1:C:159:GLU:CD	2.08	0.57
1:D:159:GLU:H	1:D:159:GLU:CD	2.07	0.57
1:A:227:ASN:O	1:A:231:VAL:HG13	2.05	0.57
1:C:227:ASN:O	1:C:231:VAL:HG13	2.05	0.57
1:B:227:ASN:O	1:B:231:VAL:HG13	2.05	0.57
1:C:159:GLU:H	1:C:159:GLU:CD	2.07	0.57
1:A:159:GLU:CD	1:A:159:GLU:H	2.07	0.57

Continued on next page...

Continued from previous page...

Atom-1	Atom-2	Distance(Å)	Clash(Å)
1:B:159:GLU:H	1:B:159:GLU:CD	2.07	0.57
1:C:40:ILE:HD12	1:C:131:THR:HG23	1.87	0.57
1:C:236:LEU:CD2	1:C:236:LEU:N	2.68	0.57
1:B:84:ALA:O	1:B:89:ARG:HD2	2.04	0.56
1:D:228:GLN:HA	1:D:231:VAL:CG2	2.30	0.56
1:A:236:LEU:CD2	1:A:236:LEU:N	2.68	0.56
1:D:37:VAL:HG12	1:C:15:ASN:HD21	1.55	0.56
1:C:84:ALA:O	1:C:89:ARG:HD2	2.04	0.56
1:A:84:ALA:O	1:A:89:ARG:HD2	2.04	0.56
1:D:227:ASN:O	1:D:231:VAL:HG13	2.05	0.56
1:B:236:LEU:N	1:B:236:LEU:CD2	2.68	0.56
1:B:226:GLU:CD	1:B:226:GLU:N	2.51	0.56
1:D:227:ASN:O	1:D:231:VAL:HG13	2.05	0.56
1:A:226:GLU:CD	1:A:226:GLU:N	2.51	0.56
1:D:236:LEU:CD2	1:D:236:LEU:N	2.68	0.56
1:C:236:LEU:N	1:C:236:LEU:CD2	2.68	0.56
1:A:27:GLN:HG2	1:B:25:LEU:HB2	1.87	0.56
1:B:236:LEU:N	1:B:236:LEU:CD2	2.68	0.56
1:A:25:LEU:HB2	1:B:27:GLN:HG2	1.87	0.56
1:A:236:LEU:CD2	1:A:236:LEU:N	2.68	0.56
1:A:40:ILE:HD12	1:A:131:THR:HG23	1.87	0.56
1:B:40:ILE:HD12	1:B:131:THR:HG23	1.87	0.56
1:D:236:LEU:N	1:D:236:LEU:CD2	2.68	0.56
1:A:214:VAL:O	1:A:219:MET:HB2	2.06	0.56
1:C:214:VAL:O	1:C:219:MET:HB2	2.06	0.56
1:B:214:VAL:O	1:B:219:MET:HB2	2.06	0.56
1:D:27:GLN:HG3	1:C:25:LEU:HD12	1.88	0.56
1:D:38:TYR:CE1	1:C:17:PHE:HA	2.40	0.56
1:A:25:LEU:HB2	1:B:27:GLN:HG2	1.88	0.56
1:B:227:ASN:O	1:B:231:VAL:HG13	2.05	0.56
1:A:27:GLN:HG2	1:B:25:LEU:HB2	1.88	0.56
1:A:227:ASN:O	1:A:231:VAL:HG13	2.05	0.56
1:D:214:VAL:O	1:D:219:MET:HB2	2.06	0.56
1:C:214:VAL:O	1:C:219:MET:HB2	2.06	0.56
1:D:40:ILE:HD12	1:D:131:THR:HG23	1.87	0.56
1:D:17:PHE:HD1	1:C:38:TYR:CZ	2.23	0.56
1:B:214:VAL:O	1:B:219:MET:HB2	2.06	0.56
1:C:227:ASN:O	1:C:231:VAL:HG13	2.05	0.56
1:A:214:VAL:O	1:A:219:MET:HB2	2.06	0.56
1:B:40:ILE:HD12	1:B:131:THR:HG23	1.87	0.55
1:D:38:TYR:CE1	1:C:17:PHE:HA	2.41	0.55
1:A:40:ILE:HD12	1:A:131:THR:HG23	1.87	0.55

Continued on next page...

Continued from previous page...

Atom-1	Atom-2	Distance(Å)	Clash(Å)
1:A:15:ASN:HD21	1:B:37:VAL:HG12	1.49	0.55
1:D:38:TYR:CE2	1:C:17:PHE:HD1	2.24	0.55
1:A:37:VAL:HG12	1:B:15:ASN:HD21	1.49	0.55
1:D:40:ILE:HD12	1:D:131:THR:HG23	1.87	0.55
1:C:40:ILE:HD12	1:C:131:THR:HG23	1.87	0.55
1:D:86:GLU:CD	1:D:89:ARG:HD3	2.27	0.55
1:A:86:GLU:CD	1:A:89:ARG:HD3	2.27	0.55
1:B:62:LEU:HD13	1:B:69:VAL:CG2	2.32	0.55
1:B:86:GLU:CD	1:B:89:ARG:HD3	2.27	0.55
1:A:62:LEU:HD13	1:A:69:VAL:CG2	2.32	0.55
1:D:234:TYR:HE1	1:C:223:PHE:HZ	1.55	0.55
1:D:214:VAL:O	1:D:219:MET:HB2	2.06	0.55
1:B:217:ILE:HD11	1:B:219:MET:HG3	1.89	0.55
1:A:217:ILE:HD11	1:A:219:MET:HG3	1.89	0.55
1:C:217:ILE:HD11	1:C:219:MET:HG3	1.89	0.55
1:D:217:ILE:HD11	1:D:219:MET:HG3	1.89	0.54
1:D:228:GLN:CA	1:D:231:VAL:HG22	2.34	0.54
1:D:228:GLN:CA	1:D:231:VAL:HG22	2.34	0.54
1:C:86:GLU:CD	1:C:89:ARG:HD3	2.27	0.54
1:A:15:ASN:ND2	1:B:37:VAL:HG13	2.09	0.54
1:A:37:VAL:HG13	1:B:15:ASN:ND2	2.09	0.54
1:D:62:LEU:HD13	1:D:69:VAL:CG2	2.32	0.54
1:A:37:VAL:HG12	1:B:15:ASN:HD21	1.50	0.54
1:D:86:GLU:CD	1:D:89:ARG:HD3	2.27	0.54
1:A:15:ASN:HD21	1:B:37:VAL:HG12	1.50	0.54
1:D:233:VAL:HG11	1:D:244:PRO:HG3	1.90	0.54
1:B:228:GLN:CA	1:B:231:VAL:HG22	2.34	0.54
1:A:228:GLN:CA	1:A:231:VAL:HG22	2.34	0.54
1:A:217:ILE:HD11	1:A:219:MET:HG3	1.89	0.54
1:D:233:VAL:HG11	1:D:244:PRO:HG3	1.90	0.54
1:D:217:ILE:HD11	1:D:219:MET:HG3	1.89	0.54
1:B:217:ILE:HD11	1:B:219:MET:HG3	1.89	0.54
1:C:62:LEU:HD13	1:C:69:VAL:CG2	2.32	0.53
1:C:86:GLU:CD	1:C:89:ARG:HD3	2.27	0.53
1:A:228:GLN:CA	1:A:231:VAL:HG22	2.34	0.53
1:B:228:GLN:CA	1:B:231:VAL:HG22	2.34	0.53
1:B:86:GLU:CD	1:B:89:ARG:HD3	2.27	0.53
1:A:86:GLU:CD	1:A:89:ARG:HD3	2.27	0.53
1:D:234:TYR:HE1	1:C:223:PHE:HZ	1.55	0.53
1:C:217:ILE:HD11	1:C:219:MET:HG3	1.89	0.53
1:C:228:GLN:CA	1:C:231:VAL:HG22	2.34	0.53
1:A:25:LEU:HB3	1:B:25:LEU:HB3	1.90	0.53

Continued on next page...

Continued from previous page...

Atom-1	Atom-2	Distance(Å)	Clash(Å)
1:B:14:PRO:C	1:B:16:ARG:H	2.11	0.53
1:D:14:PRO:C	1:D:16:ARG:H	2.12	0.53
1:A:25:LEU:HB3	1:B:25:LEU:HB3	1.90	0.53
1:A:14:PRO:C	1:A:16:ARG:H	2.11	0.53
1:D:16:ARG:HG3	1:C:35:ARG:NH1	2.24	0.53
1:A:233:VAL:HG11	1:A:244:PRO:HG3	1.90	0.53
1:B:233:VAL:HG11	1:B:244:PRO:HG3	1.90	0.53
1:A:62:LEU:HD13	1:A:69:VAL:CG2	2.33	0.53
1:C:228:GLN:CA	1:C:231:VAL:HG22	2.34	0.53
1:B:62:LEU:HD13	1:B:69:VAL:CG2	2.33	0.53
1:C:14:PRO:C	1:C:16:ARG:H	2.11	0.53
1:C:95:LEU:HD13	1:C:170:ILE:CD1	2.39	0.53
1:C:233:VAL:HG11	1:C:244:PRO:HG3	1.90	0.53
1:C:14:PRO:C	1:C:16:ARG:H	2.11	0.53
1:D:35:ARG:HH12	1:C:16:ARG:HG3	1.73	0.53
1:C:60:ALA:O	1:C:181:LEU:HA	2.09	0.53
1:D:60:ALA:O	1:D:181:LEU:HA	2.09	0.53
1:B:60:ALA:O	1:B:181:LEU:HA	2.09	0.53
1:A:95:LEU:HD13	1:A:170:ILE:CD1	2.39	0.53
1:A:60:ALA:O	1:A:181:LEU:HA	2.09	0.53
1:B:95:LEU:HD13	1:B:170:ILE:CD1	2.39	0.53
1:D:95:LEU:HD13	1:D:170:ILE:CD1	2.39	0.53
1:C:59:TYR:HB2	1:C:253:LEU:HG	1.91	0.52
1:D:170:ILE:HG12	1:D:173:TRP:CE3	2.45	0.52
1:B:113:MET:HE3	1:B:225:PRO:HG3	1.90	0.52
1:D:27:GLN:HG3	1:C:25:LEU:HD12	1.89	0.52
1:A:113:MET:HE3	1:A:225:PRO:HG3	1.90	0.52
1:C:113:MET:HE3	1:C:225:PRO:HG3	1.90	0.52
1:A:59:TYR:HB2	1:A:253:LEU:HG	1.91	0.52
1:B:233:VAL:HG11	1:B:244:PRO:HG3	1.90	0.52
1:D:113:MET:HE3	1:D:225:PRO:HG3	1.90	0.52
1:C:233:VAL:HG11	1:C:244:PRO:HG3	1.90	0.52
1:B:59:TYR:HB2	1:B:253:LEU:HG	1.91	0.52
1:D:59:TYR:HB2	1:D:253:LEU:HG	1.91	0.52
1:A:233:VAL:HG11	1:A:244:PRO:HG3	1.90	0.52
1:A:14:PRO:C	1:A:16:ARG:H	2.11	0.52
1:B:14:PRO:C	1:B:16:ARG:H	2.11	0.52
1:D:16:ARG:HG3	1:C:35:ARG:NH1	2.23	0.52
1:D:95:LEU:HD13	1:D:170:ILE:CD1	2.39	0.52
1:B:95:LEU:HD13	1:B:170:ILE:CD1	2.39	0.52
1:A:95:LEU:HD13	1:A:170:ILE:CD1	2.39	0.52
1:B:170:ILE:HG12	1:B:173:TRP:CE3	2.45	0.52

Continued on next page...

Continued from previous page...

Atom-1	Atom-2	Distance(Å)	Clash(Å)
1:A:170:ILE:HG12	1:A:173:TRP:CE3	2.45	0.52
1:D:37:VAL:HG13	1:C:15:ASN:ND2	2.15	0.52
1:D:59:TYR:HB2	1:D:253:LEU:HG	1.91	0.52
1:C:60:ALA:O	1:C:181:LEU:HA	2.09	0.52
1:A:60:ALA:O	1:A:181:LEU:HA	2.09	0.52
1:D:62:LEU:HD13	1:D:69:VAL:CG2	2.32	0.52
1:B:60:ALA:O	1:B:181:LEU:HA	2.09	0.52
1:C:95:LEU:HD13	1:C:170:ILE:CD1	2.39	0.52
1:C:170:ILE:HG12	1:C:173:TRP:CE3	2.44	0.52
1:B:59:TYR:HB2	1:B:253:LEU:HG	1.91	0.52
1:D:14:PRO:C	1:D:16:ARG:H	2.11	0.52
1:A:59:TYR:HB2	1:A:253:LEU:HG	1.91	0.52
1:D:38:TYR:CZ	1:C:17:PHE:HD1	2.28	0.51
1:D:60:ALA:O	1:D:181:LEU:HA	2.09	0.51
1:C:59:TYR:HB2	1:C:253:LEU:HG	1.91	0.51
1:D:38:TYR:CZ	1:C:17:PHE:HD1	2.28	0.51
1:C:157:ALA:HB1	1:C:159:GLU:OE1	2.11	0.51
1:C:170:ILE:HG12	1:C:173:TRP:CE3	2.45	0.51
1:A:157:ALA:HB1	1:A:159:GLU:OE1	2.11	0.51
1:B:157:ALA:HB1	1:B:159:GLU:OE1	2.11	0.51
1:D:170:ILE:HG12	1:D:173:TRP:CE3	2.45	0.51
1:D:157:ALA:HB1	1:D:159:GLU:OE1	2.11	0.51
1:A:37:VAL:HG12	1:B:15:ASN:OD1	2.10	0.51
1:A:170:ILE:HG12	1:A:173:TRP:CE3	2.45	0.51
1:A:15:ASN:OD1	1:B:37:VAL:HG12	2.10	0.51
1:B:170:ILE:HG12	1:B:173:TRP:CE3	2.45	0.51
1:D:35:ARG:HH12	1:C:16:ARG:HG3	1.75	0.50
1:D:49:GLN:HG2	1:D:50:PRO:CD	2.42	0.50
1:C:157:ALA:HB1	1:C:159:GLU:OE1	2.11	0.50
1:B:49:GLN:HG2	1:B:50:PRO:CD	2.42	0.50
1:C:49:GLN:HG2	1:C:50:PRO:CD	2.42	0.50
1:A:49:GLN:HG2	1:A:50:PRO:CD	2.42	0.50
1:A:132:GLN:CD	1:B:17:PHE:CE2	2.85	0.50
1:A:16:ARG:HG3	1:B:35:ARG:HH12	1.77	0.50
1:A:17:PHE:CE2	1:B:132:GLN:CD	2.85	0.50
1:A:35:ARG:HH12	1:B:16:ARG:HG3	1.77	0.50
1:C:226:GLU:N	1:C:226:GLU:CD	2.51	0.50
1:D:157:ALA:HB1	1:D:159:GLU:OE1	2.11	0.50
1:A:81:VAL:O	1:A:83:GLY:N	2.45	0.50
1:B:81:VAL:O	1:B:83:GLY:N	2.45	0.50
1:A:17:PHE:CE2	1:B:132:GLN:CD	2.86	0.50
1:A:35:ARG:HH12	1:B:16:ARG:HG3	1.76	0.50

Continued on next page...

Continued from previous page...

Atom-1	Atom-2	Distance(Å)	Clash(Å)
1:B:157:ALA:HB1	1:B:159:GLU:OE1	2.11	0.50
1:A:132:GLN:CD	1:B:17:PHE:CE2	2.86	0.50
1:A:16:ARG:HG3	1:B:35:ARG:HH12	1.76	0.50
1:A:157:ALA:HB1	1:A:159:GLU:OE1	2.11	0.50
1:D:49:GLN:HG2	1:D:50:PRO:CD	2.42	0.50
1:D:27:GLN:CG	1:C:25:LEU:HD12	2.42	0.49
1:C:81:VAL:O	1:C:83:GLY:N	2.45	0.49
1:A:27:GLN:HG3	1:B:25:LEU:HD12	1.94	0.49
1:A:49:GLN:HG2	1:A:50:PRO:CD	2.42	0.49
1:A:25:LEU:HD12	1:B:27:GLN:HG3	1.94	0.49
1:B:49:GLN:HG2	1:B:50:PRO:CD	2.42	0.49
1:C:81:VAL:O	1:C:83:GLY:N	2.45	0.49
1:D:81:VAL:O	1:D:83:GLY:N	2.45	0.49
1:A:113:MET:HE3	1:A:225:PRO:HG3	1.95	0.49
1:B:81:VAL:O	1:B:83:GLY:N	2.45	0.49
1:C:227:ASN:O	1:C:230:THR:HG22	2.12	0.49
1:A:81:VAL:O	1:A:83:GLY:N	2.45	0.49
1:B:113:MET:HE3	1:B:225:PRO:HG3	1.95	0.49
1:C:113:MET:HE3	1:C:225:PRO:HG3	1.95	0.49
1:A:25:LEU:HD12	1:B:27:GLN:HG3	1.95	0.49
1:B:165:LEU:HD13	1:B:178:GLN:HG3	1.94	0.49
1:D:165:LEU:HD13	1:D:178:GLN:HG3	1.94	0.49
1:D:227:ASN:O	1:D:230:THR:HG22	2.12	0.49
1:A:27:GLN:HG3	1:B:25:LEU:HD12	1.95	0.49
1:A:165:LEU:HD13	1:A:178:GLN:HG3	1.94	0.49
1:D:113:MET:HE3	1:D:225:PRO:HG3	1.95	0.49
1:B:227:ASN:O	1:B:230:THR:HG22	2.12	0.49
1:A:227:ASN:O	1:A:230:THR:HG22	2.12	0.49
1:C:49:GLN:HG2	1:C:50:PRO:CD	2.42	0.49
1:D:81:VAL:O	1:D:83:GLY:N	2.45	0.49
1:A:165:LEU:HD13	1:A:178:GLN:HG3	1.94	0.49
1:B:165:LEU:HD13	1:B:178:GLN:HG3	1.94	0.49
1:D:227:ASN:O	1:D:230:THR:HG22	2.12	0.49
1:A:132:GLN:NE2	1:B:17:PHE:CD2	2.81	0.48
1:C:227:ASN:O	1:C:230:THR:HG22	2.12	0.48
1:D:81:VAL:HG13	1:D:120:TYR:CD2	2.48	0.48
1:A:17:PHE:CD2	1:B:132:GLN:NE2	2.81	0.48
1:C:165:LEU:HD13	1:C:178:GLN:HG3	1.94	0.48
1:D:81:VAL:HG13	1:D:120:TYR:CD2	2.48	0.48
1:C:93:TYR:HE1	1:C:95:LEU:HB2	1.78	0.48
1:B:31:PRO:HG2	1:B:34:VAL:HG21	1.95	0.48
1:D:192:ALA:O	1:D:194:PRO:HD3	2.14	0.48

Continued on next page...

Continued from previous page...

Atom-1	Atom-2	Distance(Å)	Clash(Å)
1:D:165:LEU:HD13	1:D:178:GLN:HG3	1.94	0.48
1:A:31:PRO:HG2	1:A:34:VAL:HG21	1.95	0.48
1:C:31:PRO:HG2	1:C:34:VAL:HG21	1.95	0.48
1:A:37:VAL:HG13	1:B:15:ASN:ND2	2.09	0.48
1:A:15:ASN:OD1	1:B:37:VAL:HG12	2.12	0.48
1:A:27:GLN:CG	1:B:25:LEU:HD12	2.44	0.48
1:C:165:LEU:HD13	1:C:178:GLN:HG3	1.94	0.48
1:B:192:ALA:O	1:B:194:PRO:HD3	2.14	0.48
1:D:31:PRO:HG2	1:D:34:VAL:HG21	1.95	0.48
1:C:192:ALA:O	1:C:194:PRO:HD3	2.14	0.48
1:A:15:ASN:ND2	1:B:37:VAL:HG13	2.09	0.48
1:A:37:VAL:HG12	1:B:15:ASN:OD1	2.12	0.48
1:A:25:LEU:HD12	1:B:27:GLN:CG	2.44	0.48
1:A:192:ALA:O	1:A:194:PRO:HD3	2.14	0.48
1:A:227:ASN:O	1:A:230:THR:HG22	2.12	0.48
1:C:111:THR:HB	1:C:135:TRP:CE3	2.48	0.48
1:A:81:VAL:HG13	1:A:120:TYR:CD2	2.48	0.48
1:C:81:VAL:HG13	1:C:120:TYR:CD2	2.48	0.48
1:B:81:VAL:HG13	1:B:120:TYR:CD2	2.48	0.48
1:B:227:ASN:O	1:B:230:THR:HG22	2.12	0.48
1:B:81:VAL:HG13	1:B:120:TYR:CD2	2.48	0.48
1:A:81:VAL:HG13	1:A:120:TYR:CD2	2.48	0.48
1:A:192:ALA:O	1:A:194:PRO:HD3	2.14	0.48
1:D:27:GLN:HG2	1:C:25:LEU:HB2	1.96	0.48
1:C:62:LEU:HD13	1:C:69:VAL:CG2	2.32	0.48
1:B:192:ALA:O	1:B:194:PRO:HD3	2.14	0.48
1:D:192:ALA:O	1:D:194:PRO:HD3	2.14	0.48
1:D:226:GLU:CD	1:D:226:GLU:N	2.51	0.48
1:B:111:THR:HB	1:B:135:TRP:CE3	2.48	0.48
1:A:111:THR:HB	1:A:135:TRP:CE3	2.48	0.48
1:A:93:TYR:HE1	1:A:95:LEU:HB2	1.78	0.48
1:A:111:THR:HB	1:A:135:TRP:CE3	2.48	0.48
1:B:111:THR:HB	1:B:135:TRP:CE3	2.48	0.48
1:B:93:TYR:HE1	1:B:95:LEU:HB2	1.78	0.48
1:C:111:THR:HB	1:C:135:TRP:CE3	2.48	0.48
1:D:111:THR:HB	1:D:135:TRP:CE3	2.48	0.48
1:C:192:ALA:O	1:C:194:PRO:HD3	2.14	0.48
1:A:38:TYR:CE2	1:B:17:PHE:HD1	2.32	0.48
1:D:111:THR:HB	1:D:135:TRP:CE3	2.48	0.48
1:D:101:ARG:HB3	1:D:108:ILE:HB	1.96	0.48
1:A:17:PHE:HD1	1:B:38:TYR:CE2	2.32	0.48
1:C:93:TYR:HE1	1:C:95:LEU:HB2	1.78	0.48

Continued on next page...

Continued from previous page...

Atom-1	Atom-2	Distance(Å)	Clash(Å)
1:A:17:PHE:HD1	1:B:38:TYR:CE2	2.31	0.48
1:D:27:GLN:HG2	1:C:25:LEU:HB2	1.96	0.48
1:A:38:TYR:CE2	1:B:17:PHE:HD1	2.31	0.48
1:C:81:VAL:HG13	1:C:120:TYR:CD2	2.48	0.48
1:A:15:ASN:O	1:B:37:VAL:CG1	2.61	0.47
1:A:37:VAL:CG1	1:B:15:ASN:O	2.61	0.47
1:D:15:ASN:OD1	1:C:38:TYR:HB2	2.14	0.47
1:C:101:ARG:HB3	1:C:108:ILE:HB	1.96	0.47
1:D:101:ARG:HB3	1:D:108:ILE:HB	1.96	0.47
1:C:101:ARG:HB3	1:C:108:ILE:HB	1.96	0.47
1:D:245:LYS:O	1:D:246:ALA:C	2.53	0.47
1:C:31:PRO:HG2	1:C:34:VAL:HG21	1.95	0.47
1:B:101:ARG:HB3	1:B:108:ILE:HB	1.96	0.47
1:A:101:ARG:HB3	1:A:108:ILE:HB	1.96	0.47
1:D:15:ASN:OD1	1:C:38:TYR:HB2	2.15	0.47
1:A:226:GLU:CD	1:A:226:GLU:N	2.51	0.47
1:B:14:PRO:C	1:B:16:ARG:N	2.68	0.47
1:A:14:PRO:C	1:A:16:ARG:N	2.68	0.47
1:D:14:PRO:C	1:D:16:ARG:N	2.68	0.47
1:B:93:TYR:HE1	1:B:95:LEU:HB2	1.78	0.47
1:A:101:ARG:HB3	1:A:108:ILE:HB	1.96	0.47
1:B:226:GLU:N	1:B:226:GLU:CD	2.51	0.47
1:A:14:PRO:C	1:A:16:ARG:N	2.68	0.47
1:B:14:PRO:C	1:B:16:ARG:N	2.68	0.47
1:A:93:TYR:HE1	1:A:95:LEU:HB2	1.78	0.47
1:B:101:ARG:HB3	1:B:108:ILE:HB	1.96	0.47
1:A:17:PHE:CD2	1:B:132:GLN:NE2	2.82	0.47
1:A:31:PRO:HG2	1:A:34:VAL:HG21	1.95	0.47
1:C:245:LYS:O	1:C:246:ALA:C	2.53	0.47
1:B:245:LYS:O	1:B:246:ALA:C	2.53	0.47
1:A:132:GLN:NE2	1:B:17:PHE:CD2	2.82	0.47
1:D:27:GLN:CG	1:C:25:LEU:HD12	2.44	0.47
1:B:31:PRO:HG2	1:B:34:VAL:HG21	1.95	0.47
1:A:245:LYS:O	1:A:246:ALA:C	2.53	0.47
1:B:195:LEU:HD22	1:B:197:ILE:HG13	1.97	0.47
1:D:93:TYR:HE1	1:D:95:LEU:HB2	1.78	0.47
1:A:195:LEU:HD22	1:A:197:ILE:HG13	1.97	0.47
1:D:170:ILE:HG12	1:D:173:TRP:HE3	1.79	0.47
1:D:14:PRO:C	1:D:16:ARG:N	2.68	0.47
1:A:25:LEU:HD12	1:B:27:GLN:CG	2.44	0.47
1:C:14:PRO:C	1:C:16:ARG:N	2.68	0.47
1:A:170:ILE:HG12	1:A:173:TRP:HE3	1.80	0.47

Continued on next page...

Continued from previous page...

Atom-1	Atom-2	Distance(Å)	Clash(Å)
1:D:170:ILE:HG12	1:D:173:TRP:HE3	1.80	0.47
1:A:27:GLN:CG	1:B:25:LEU:HD12	2.44	0.47
1:D:195:LEU:HD22	1:D:197:ILE:HG13	1.97	0.47
1:C:195:LEU:HD22	1:C:197:ILE:HG13	1.97	0.47
1:C:14:PRO:C	1:C:16:ARG:N	2.68	0.47
1:B:170:ILE:HG12	1:B:173:TRP:HE3	1.80	0.47
1:D:93:TYR:HE1	1:D:95:LEU:HB2	1.78	0.47
1:C:245:LYS:O	1:C:246:ALA:C	2.53	0.47
1:D:195:LEU:HD22	1:D:197:ILE:HG13	1.97	0.47
1:C:170:ILE:HG12	1:C:173:TRP:HE3	1.80	0.47
1:D:31:PRO:HG2	1:D:34:VAL:HG21	1.96	0.47
1:C:195:LEU:HD22	1:C:197:ILE:HG13	1.97	0.47
1:A:195:LEU:HD22	1:A:197:ILE:HG13	1.97	0.47
1:B:195:LEU:HD22	1:B:197:ILE:HG13	1.97	0.47
1:C:170:ILE:HG12	1:C:173:TRP:HE3	1.79	0.47
1:B:62:LEU:CD1	1:B:69:VAL:HG22	2.34	0.46
1:C:62:LEU:CD1	1:C:69:VAL:HG22	2.34	0.46
1:A:62:LEU:CD1	1:A:69:VAL:HG22	2.34	0.46
1:A:166:ARG:HB3	1:A:177:THR:HB	1.98	0.46
1:B:236:LEU:H	1:B:236:LEU:CD2	2.28	0.46
1:B:166:ARG:HB3	1:B:177:THR:HB	1.98	0.46
1:C:166:ARG:HB3	1:C:177:THR:HB	1.98	0.46
1:A:236:LEU:H	1:A:236:LEU:CD2	2.28	0.46
1:B:166:ARG:HB3	1:B:177:THR:HB	1.98	0.46
1:D:236:LEU:H	1:D:236:LEU:CD2	2.28	0.46
1:D:166:ARG:HB3	1:D:177:THR:HB	1.98	0.46
1:A:166:ARG:HB3	1:A:177:THR:HB	1.98	0.46
1:B:170:ILE:HG12	1:B:173:TRP:HE3	1.80	0.46
1:A:170:ILE:HG12	1:A:173:TRP:HE3	1.80	0.46
1:C:166:ARG:HB3	1:C:177:THR:HB	1.98	0.46
1:A:236:LEU:CD2	1:A:236:LEU:H	2.28	0.46
1:B:236:LEU:CD2	1:B:236:LEU:H	2.28	0.46
1:C:236:LEU:CD2	1:C:236:LEU:H	2.28	0.46
1:D:166:ARG:HB3	1:D:177:THR:HB	1.98	0.46
1:C:53:LEU:HA	1:C:53:LEU:HD12	1.82	0.46
1:D:236:LEU:CD2	1:D:236:LEU:H	2.28	0.46
1:A:37:VAL:O	1:A:131:THR:HA	2.16	0.46
1:C:37:VAL:O	1:C:131:THR:HA	2.16	0.46
1:D:62:LEU:CD1	1:D:69:VAL:HG22	2.34	0.46
1:A:53:LEU:HA	1:A:53:LEU:HD12	1.82	0.46
1:B:37:VAL:O	1:B:131:THR:HA	2.16	0.46
1:B:53:LEU:HD12	1:B:53:LEU:HA	1.82	0.46

Continued on next page...

Continued from previous page...

Atom-1	Atom-2	Distance(Å)	Clash(Å)
1:C:236:LEU:CD2	1:C:236:LEU:H	2.28	0.46
1:B:49:GLN:HG2	1:B:50:PRO:HD2	1.98	0.46
1:D:37:VAL:O	1:D:131:THR:HA	2.16	0.46
1:A:49:GLN:HG2	1:A:50:PRO:HD2	1.98	0.46
1:C:114:GLU:HB2	1:C:131:THR:HG21	1.97	0.45
1:A:195:LEU:CD2	1:A:197:ILE:HG13	2.47	0.45
1:B:195:LEU:CD2	1:B:197:ILE:HG13	2.47	0.45
1:A:17:PHE:HA	1:B:38:TYR:CE1	2.52	0.45
1:C:195:LEU:CD2	1:C:197:ILE:HG13	2.47	0.45
1:C:197:ILE:HA	1:C:198:PRO:HD3	1.85	0.45
1:A:14:PRO:O	1:A:16:ARG:N	2.50	0.45
1:A:38:TYR:CE1	1:B:17:PHE:HA	2.52	0.45
1:C:37:VAL:O	1:C:131:THR:HA	2.16	0.45
1:B:14:PRO:O	1:B:16:ARG:N	2.50	0.45
1:C:14:PRO:O	1:C:16:ARG:N	2.50	0.45
1:C:49:GLN:HG2	1:C:50:PRO:HD2	1.98	0.45
1:A:114:GLU:HB2	1:A:131:THR:HG21	1.98	0.45
1:B:37:VAL:O	1:B:131:THR:HA	2.16	0.45
1:B:14:PRO:O	1:B:16:ARG:N	2.50	0.45
1:D:14:PRO:O	1:D:16:ARG:N	2.50	0.45
1:B:237:LYS:O	1:B:240:GLY:N	2.45	0.45
1:B:114:GLU:HB2	1:B:131:THR:HG21	1.98	0.45
1:A:37:VAL:O	1:A:131:THR:HA	2.16	0.45
1:A:14:PRO:O	1:A:16:ARG:N	2.50	0.45
1:D:14:PRO:O	1:D:16:ARG:N	2.50	0.45
1:A:237:LYS:O	1:A:240:GLY:N	2.45	0.45
1:A:37:VAL:CG1	1:B:15:ASN:O	2.60	0.45
1:A:15:ASN:O	1:B:37:VAL:CG1	2.60	0.45
1:D:53:LEU:HA	1:D:53:LEU:HD12	1.82	0.45
1:B:114:GLU:HB2	1:B:131:THR:HG21	1.98	0.45
1:A:114:GLU:HB2	1:A:131:THR:HG21	1.98	0.45
1:D:195:LEU:CD2	1:D:197:ILE:HG13	2.47	0.45
1:C:114:GLU:HB2	1:C:131:THR:HG21	1.98	0.45
1:C:37:VAL:HG12	1:C:38:TYR:N	2.32	0.45
1:C:14:PRO:O	1:C:16:ARG:N	2.50	0.45
1:D:114:GLU:HB2	1:D:131:THR:HG21	1.98	0.45
1:D:49:GLN:HG2	1:D:50:PRO:HD2	1.98	0.45
1:B:37:VAL:HG12	1:B:38:TYR:N	2.32	0.45
1:D:114:GLU:HB2	1:D:131:THR:HG21	1.98	0.45
1:D:37:VAL:O	1:D:131:THR:HA	2.16	0.45
1:D:195:LEU:CD2	1:D:197:ILE:HG13	2.47	0.45
1:A:37:VAL:HG12	1:A:38:TYR:N	2.32	0.45

Continued on next page...

Continued from previous page...

Atom-1	Atom-2	Distance(Å)	Clash(Å)
1:D:245:LYS:O	1:D:246:ALA:C	2.53	0.45
1:B:195:LEU:CD2	1:B:197:ILE:HG13	2.47	0.44
1:D:49:GLN:HG2	1:D:50:PRO:HD2	1.98	0.44
1:A:195:LEU:CD2	1:A:197:ILE:HG13	2.47	0.44
1:D:237:LYS:O	1:D:240:GLY:N	2.45	0.44
1:D:37:VAL:HG12	1:D:38:TYR:N	2.32	0.44
1:D:25:LEU:HD12	1:C:27:GLN:HG3	1.99	0.44
1:A:51:PRO:HG3	1:A:55:ILE:HG13	2.00	0.44
1:B:51:PRO:HG3	1:B:55:ILE:HG13	2.00	0.44
1:C:51:PRO:HG3	1:C:55:ILE:HG13	2.00	0.44
1:C:165:LEU:HG	1:C:176:ILE:HG23	2.00	0.44
1:A:62:LEU:CD1	1:A:69:VAL:HG22	2.34	0.44
1:A:77:ALA:HB2	1:A:168:VAL:HG11	2.00	0.44
1:C:49:GLN:HG2	1:C:50:PRO:HD2	1.98	0.44
1:B:62:LEU:CD1	1:B:69:VAL:HG22	2.34	0.44
1:B:77:ALA:HB2	1:B:168:VAL:HG11	2.00	0.44
1:D:77:ALA:HB2	1:D:168:VAL:HG11	2.00	0.44
1:C:195:LEU:CD2	1:C:197:ILE:HG13	2.47	0.44
1:A:165:LEU:HG	1:A:176:ILE:HG23	2.00	0.44
1:C:77:ALA:HB2	1:C:168:VAL:HG11	2.00	0.44
1:A:49:GLN:HG2	1:A:50:PRO:HD2	1.98	0.44
1:B:51:PRO:HG3	1:B:55:ILE:HG13	2.00	0.44
1:C:51:PRO:HG3	1:C:55:ILE:HG13	2.00	0.44
1:B:165:LEU:HG	1:B:176:ILE:HG23	2.00	0.44
1:C:23:PRO:CB	1:C:234:TYR:HD1	2.31	0.44
1:B:49:GLN:HG2	1:B:50:PRO:HD2	1.98	0.44
1:A:51:PRO:HG3	1:A:55:ILE:HG13	2.00	0.44
1:C:62:LEU:CD1	1:C:69:VAL:HG22	2.34	0.44
1:D:77:ALA:HB2	1:D:168:VAL:HG11	2.00	0.44
1:B:165:LEU:HG	1:B:176:ILE:HG23	2.00	0.44
1:C:23:PRO:CB	1:C:234:TYR:HD1	2.31	0.44
1:D:51:PRO:HG3	1:D:55:ILE:HG13	2.00	0.44
1:A:165:LEU:HG	1:A:176:ILE:HG23	2.00	0.44
1:C:165:LEU:HG	1:C:176:ILE:HG23	2.00	0.44
1:C:37:VAL:HG12	1:C:38:TYR:N	2.32	0.44
1:B:113:MET:CE	1:B:225:PRO:HG3	2.48	0.44
1:A:113:MET:CE	1:A:225:PRO:HG3	2.48	0.44
1:C:113:MET:CE	1:C:225:PRO:HG3	2.48	0.44
1:D:51:PRO:HG3	1:D:55:ILE:HG13	2.00	0.44
1:D:230:THR:CG2	1:D:231:VAL:N	2.81	0.43
1:B:77:ALA:HB2	1:B:168:VAL:HG11	2.00	0.43
1:C:136:ASN:HD22	1:C:219:MET:CG	2.31	0.43

Continued on next page...

Continued from previous page...

Atom-1	Atom-2	Distance(Å)	Clash(Å)
1:A:245:LYS:O	1:A:246:ALA:C	2.53	0.43
1:D:165:LEU:HG	1:D:176:ILE:HG23	2.00	0.43
1:A:77:ALA:HB2	1:A:168:VAL:HG11	2.00	0.43
1:B:245:LYS:O	1:B:246:ALA:C	2.53	0.43
1:A:37:VAL:HG12	1:A:38:TYR:N	2.32	0.43
1:A:38:TYR:CE1	1:B:17:PHE:HA	2.53	0.43
1:A:15:ASN:OD1	1:B:38:TYR:HB2	2.18	0.43
1:D:40:ILE:HG22	1:D:41:GLN:NE2	2.33	0.43
1:D:165:LEU:HG	1:D:176:ILE:HG23	2.00	0.43
1:A:136:ASN:HD22	1:A:219:MET:CG	2.31	0.43
1:A:17:PHE:HA	1:B:38:TYR:CE1	2.53	0.43
1:B:37:VAL:HG12	1:B:38:TYR:N	2.32	0.43
1:A:38:TYR:HB2	1:B:15:ASN:OD1	2.18	0.43
1:B:136:ASN:HD22	1:B:219:MET:CG	2.31	0.43
1:A:23:PRO:CB	1:A:234:TYR:HD1	2.31	0.43
1:D:23:PRO:CB	1:D:234:TYR:HD1	2.31	0.43
1:D:113:MET:CE	1:D:225:PRO:HG3	2.48	0.43
1:C:113:MET:CE	1:C:225:PRO:HG3	2.48	0.43
1:D:106:CYS:HB2	1:D:203:LEU:O	2.18	0.43
1:B:23:PRO:CB	1:B:234:TYR:HD1	2.31	0.43
1:B:23:PRO:CB	1:B:234:TYR:HD1	2.31	0.43
1:A:97:ILE:HA	1:A:167:LEU:O	2.19	0.43
1:D:40:ILE:HG22	1:D:41:GLN:NE2	2.33	0.43
1:D:25:LEU:HB3	1:C:25:LEU:HB3	2.01	0.43
1:D:62:LEU:CD1	1:D:69:VAL:HG22	2.34	0.43
1:A:23:PRO:CB	1:A:234:TYR:HD1	2.31	0.43
1:B:97:ILE:HA	1:B:167:LEU:O	2.19	0.43
1:A:40:ILE:HG22	1:A:41:GLN:NE2	2.33	0.43
1:C:40:ILE:HG22	1:C:41:GLN:NE2	2.33	0.43
1:B:230:THR:CG2	1:B:231:VAL:N	2.81	0.43
1:D:16:ARG:HG3	1:C:35:ARG:HH12	1.83	0.43
1:B:40:ILE:HG22	1:B:41:GLN:NE2	2.33	0.43
1:D:37:VAL:HG12	1:D:38:TYR:N	2.32	0.43
1:D:25:LEU:HB2	1:C:27:GLN:HG2	2.00	0.43
1:A:230:THR:CG2	1:A:231:VAL:N	2.81	0.43
1:C:77:ALA:HB2	1:C:168:VAL:HG11	2.00	0.43
1:B:40:ILE:HG22	1:B:41:GLN:NE2	2.33	0.43
1:C:86:GLU:HA	1:C:89:ARG:HD3	2.01	0.43
1:A:113:MET:CE	1:A:225:PRO:HG3	2.48	0.43
1:C:97:ILE:HA	1:C:167:LEU:O	2.19	0.43
1:A:40:ILE:HG22	1:A:41:GLN:NE2	2.33	0.43
1:B:113:MET:CE	1:B:225:PRO:HG3	2.48	0.43

Continued on next page...

Continued from previous page...

Atom-1	Atom-2	Distance(Å)	Clash(Å)
1:C:64:ARG:HB2	1:C:67:ARG:HG2	2.01	0.43
1:C:127:CYS:HA	1:C:128:PRO:HD3	1.79	0.43
1:D:125:GLY:C	1:D:127:CYS:H	2.22	0.43
1:D:237:LYS:O	1:D:240:GLY:N	2.45	0.43
1:C:89:ARG:CZ	1:C:89:ARG:HB3	2.48	0.43
1:D:136:ASN:HD22	1:D:219:MET:CG	2.31	0.43
1:D:97:ILE:HA	1:D:167:LEU:O	2.19	0.43
1:D:125:GLY:C	1:D:127:CYS:H	2.22	0.43
1:A:64:ARG:HB2	1:A:67:ARG:HG2	2.01	0.43
1:B:252:LEU:HD22	1:B:253:LEU:O	2.19	0.43
1:A:220:LEU:HA	1:A:221:PRO:HD3	1.87	0.43
1:B:106:CYS:HB2	1:B:203:LEU:O	2.19	0.43
1:B:64:ARG:HB2	1:B:67:ARG:HG2	2.01	0.43
1:A:252:LEU:HD22	1:A:253:LEU:O	2.19	0.43
1:A:106:CYS:HB2	1:A:203:LEU:O	2.19	0.43
1:B:220:LEU:HA	1:B:221:PRO:HD3	1.87	0.43
1:C:125:GLY:C	1:C:127:CYS:H	2.22	0.43
1:D:86:GLU:HA	1:D:89:ARG:HD3	2.01	0.43
1:A:86:GLU:HA	1:A:89:ARG:HD3	2.01	0.43
1:D:220:LEU:HA	1:D:221:PRO:HD3	1.87	0.43
1:D:25:LEU:C	1:D:27:GLN:HE21	2.22	0.43
1:B:86:GLU:HA	1:B:89:ARG:HD3	2.01	0.43
1:C:72:ASN:O	1:C:250:SER:HB2	2.19	0.43
1:D:25:LEU:HD12	1:C:27:GLN:HG3	1.99	0.42
1:D:25:LEU:HB3	1:C:25:LEU:HB3	2.01	0.42
1:A:197:ILE:HA	1:A:198:PRO:HD3	1.85	0.42
1:C:40:ILE:HG22	1:C:41:GLN:NE2	2.33	0.42
1:D:23:PRO:CB	1:D:234:TYR:HD1	2.31	0.42
1:B:197:ILE:HA	1:B:198:PRO:HD3	1.85	0.42
1:C:252:LEU:HD22	1:C:253:LEU:O	2.19	0.42
1:D:113:MET:CE	1:D:225:PRO:HG3	2.48	0.42
1:A:89:ARG:CZ	1:A:89:ARG:HB3	2.48	0.42
1:A:125:GLY:C	1:A:127:CYS:H	2.23	0.42
1:B:89:ARG:CZ	1:B:89:ARG:HB3	2.48	0.42
1:C:230:THR:CG2	1:C:231:VAL:N	2.81	0.42
1:D:16:ARG:HG3	1:C:35:ARG:HH12	1.83	0.42
1:B:125:GLY:C	1:B:127:CYS:H	2.23	0.42
1:D:106:CYS:HB2	1:D:203:LEU:O	2.18	0.42
1:D:25:LEU:HB2	1:C:27:GLN:HG2	2.02	0.42
1:A:25:LEU:C	1:A:27:GLN:HE21	2.22	0.42
1:C:230:THR:CG2	1:C:231:VAL:N	2.81	0.42
1:A:106:CYS:HB2	1:A:203:LEU:O	2.19	0.42

Continued on next page...

Continued from previous page...

Atom-1	Atom-2	Distance(Å)	Clash(Å)
1:B:125:GLY:C	1:B:127:CYS:H	2.22	0.42
1:C:72:ASN:O	1:C:250:SER:HB2	2.19	0.42
1:B:25:LEU:C	1:B:27:GLN:HE21	2.22	0.42
1:D:230:THR:CG2	1:D:231:VAL:N	2.81	0.42
1:A:125:GLY:C	1:A:127:CYS:H	2.22	0.42
1:B:106:CYS:HB2	1:B:203:LEU:O	2.19	0.42
1:A:217:ILE:CD1	1:A:219:MET:HG3	2.50	0.42
1:A:252:LEU:HD22	1:A:253:LEU:O	2.19	0.42
1:D:252:LEU:HD22	1:D:253:LEU:O	2.19	0.42
1:B:72:ASN:O	1:B:250:SER:HB2	2.19	0.42
1:B:91:GLN:HA	1:B:92:PRO:HD3	1.92	0.42
1:B:217:ILE:CD1	1:B:219:MET:HG3	2.50	0.42
1:B:252:LEU:HD22	1:B:253:LEU:O	2.19	0.42
1:C:97:ILE:HA	1:C:167:LEU:O	2.19	0.42
1:A:91:GLN:HA	1:A:92:PRO:HD3	1.92	0.42
1:A:72:ASN:O	1:A:250:SER:HB2	2.19	0.42
1:D:72:ASN:O	1:D:250:SER:HB2	2.19	0.42
1:C:217:ILE:CD1	1:C:219:MET:HG3	2.50	0.42
1:D:91:GLN:HA	1:D:92:PRO:HD3	1.92	0.42
1:C:106:CYS:HB2	1:C:203:LEU:O	2.19	0.42
1:D:86:GLU:HA	1:D:89:ARG:HD3	2.01	0.42
1:D:89:ARG:HB3	1:D:89:ARG:CZ	2.47	0.42
1:C:238:ILE:HD13	1:C:238:ILE:HA	1.91	0.42
1:C:91:GLN:HA	1:C:92:PRO:HD3	1.92	0.42
1:B:86:GLU:HA	1:B:89:ARG:HD3	2.01	0.42
1:C:125:GLY:C	1:C:127:CYS:H	2.22	0.42
1:A:127:CYS:HA	1:A:128:PRO:HD3	1.79	0.42
1:A:86:GLU:HA	1:A:89:ARG:HD3	2.01	0.42
1:D:217:ILE:CD1	1:D:219:MET:HG3	2.50	0.42
1:D:252:LEU:HD22	1:D:253:LEU:O	2.19	0.42
1:B:127:CYS:HA	1:B:128:PRO:HD3	1.79	0.42
1:C:106:CYS:HB2	1:C:203:LEU:O	2.19	0.42
1:D:165:LEU:CD1	1:D:178:GLN:HG3	2.50	0.42
1:D:93:TYR:CE1	1:D:95:LEU:HB2	2.55	0.42
1:C:146:GLU:C	1:C:148:ASN:H	2.23	0.42
1:D:97:ILE:HA	1:D:167:LEU:O	2.19	0.42
1:C:25:LEU:C	1:C:27:GLN:HE21	2.22	0.42
1:D:91:GLN:HA	1:D:92:PRO:HD3	1.92	0.42
1:A:230:THR:CG2	1:A:231:VAL:N	2.81	0.42
1:C:252:LEU:HD22	1:C:253:LEU:O	2.19	0.42
1:B:97:ILE:HA	1:B:167:LEU:O	2.19	0.42
1:A:72:ASN:O	1:A:250:SER:HB2	2.19	0.42

Continued on next page...

Continued from previous page...

Atom-1	Atom-2	Distance(Å)	Clash(Å)
1:C:218:GLY:O	1:C:220:LEU:HD13	2.20	0.42
1:D:38:TYR:HB2	1:C:15:ASN:OD1	2.19	0.42
1:B:230:THR:CG2	1:B:231:VAL:N	2.81	0.42
1:D:64:ARG:HB2	1:D:67:ARG:HG2	2.01	0.42
1:B:72:ASN:O	1:B:250:SER:HB2	2.19	0.42
1:A:97:ILE:HA	1:A:167:LEU:O	2.19	0.42
1:A:38:TYR:HB2	1:B:15:ASN:OD1	2.19	0.42
1:C:25:LEU:C	1:C:27:GLN:HE21	2.22	0.42
1:A:253:LEU:HA	1:A:253:LEU:HD23	1.88	0.42
1:A:15:ASN:OD1	1:B:38:TYR:HB2	2.19	0.42
1:C:86:GLU:HA	1:C:89:ARG:HD3	2.01	0.42
1:B:253:LEU:HA	1:B:253:LEU:HD23	1.88	0.42
1:B:25:LEU:C	1:B:27:GLN:HE21	2.22	0.42
1:A:218:GLY:O	1:A:220:LEU:HD13	2.20	0.42
1:D:45:PRO:HB2	1:D:167:LEU:HD13	2.02	0.42
1:C:71:LEU:HB3	1:C:179:PHE:CD2	2.55	0.42
1:A:91:GLN:HA	1:A:92:PRO:HD3	1.92	0.42
1:B:146:GLU:C	1:B:148:ASN:H	2.23	0.42
1:A:25:LEU:C	1:A:27:GLN:HE21	2.22	0.42
1:D:45:PRO:HB2	1:D:167:LEU:HD13	2.02	0.42
1:B:218:GLY:O	1:B:220:LEU:HD13	2.20	0.42
1:A:146:GLU:C	1:A:148:ASN:H	2.23	0.42
1:B:91:GLN:HA	1:B:92:PRO:HD3	1.92	0.42
1:A:165:LEU:CD1	1:A:178:GLN:HG3	2.50	0.41
1:C:238:ILE:HA	1:C:238:ILE:HD13	1.91	0.41
1:D:72:ASN:O	1:D:250:SER:HB2	2.19	0.41
1:D:165:LEU:CD1	1:D:178:GLN:HG3	2.50	0.41
1:B:165:LEU:CD1	1:B:178:GLN:HG3	2.50	0.41
1:C:165:LEU:CD1	1:C:178:GLN:HG3	2.50	0.41
1:C:197:ILE:HA	1:C:198:PRO:HD3	1.85	0.41
1:C:218:GLY:O	1:C:220:LEU:HD13	2.20	0.41
1:C:165:LEU:CD1	1:C:178:GLN:HG3	2.50	0.41
1:C:89:ARG:CZ	1:C:89:ARG:HB3	2.48	0.41
1:B:93:TYR:CE1	1:B:95:LEU:HB2	2.55	0.41
1:A:71:LEU:HB3	1:A:179:PHE:CD2	2.55	0.41
1:B:71:LEU:HB3	1:B:179:PHE:CD2	2.55	0.41
1:C:98:ALA:HB1	1:C:112:VAL:HG22	2.02	0.41
1:A:93:TYR:CE1	1:A:95:LEU:HB2	2.55	0.41
1:C:45:PRO:HB2	1:C:167:LEU:HD13	2.02	0.41
1:A:71:LEU:HB3	1:A:179:PHE:CD2	2.55	0.41
1:C:71:LEU:HB3	1:C:179:PHE:CD2	2.55	0.41
1:B:71:LEU:HB3	1:B:179:PHE:CD2	2.55	0.41

Continued on next page...

Continued from previous page...

Atom-1	Atom-2	Distance(Å)	Clash(Å)
1:C:98:ALA:HB1	1:C:112:VAL:HG22	2.02	0.41
1:D:218:GLY:O	1:D:220:LEU:HD13	2.20	0.41
1:D:25:LEU:C	1:D:27:GLN:HE21	2.22	0.41
1:D:214:VAL:HG23	1:D:215:ASP:OD1	2.20	0.41
1:B:214:VAL:HG23	1:B:215:ASP:OD1	2.20	0.41
1:C:159:GLU:N	1:C:159:GLU:CD	2.74	0.41
1:A:159:GLU:N	1:A:159:GLU:CD	2.74	0.41
1:C:93:TYR:CE1	1:C:95:LEU:HB2	2.55	0.41
1:A:45:PRO:HB2	1:A:167:LEU:HD13	2.03	0.41
1:B:45:PRO:HB2	1:B:167:LEU:HD13	2.02	0.41
1:B:98:ALA:HB1	1:B:112:VAL:HG22	2.02	0.41
1:B:218:GLY:O	1:B:220:LEU:HD13	2.20	0.41
1:A:214:VAL:HG23	1:A:215:ASP:OD1	2.20	0.41
1:D:159:GLU:CD	1:D:159:GLU:N	2.74	0.41
1:B:159:GLU:N	1:B:159:GLU:CD	2.74	0.41
1:B:45:PRO:HB2	1:B:167:LEU:HD13	2.03	0.41
1:A:45:PRO:HB2	1:A:167:LEU:HD13	2.02	0.41
1:A:218:GLY:O	1:A:220:LEU:HD13	2.20	0.41
1:A:98:ALA:HB1	1:A:112:VAL:HG22	2.02	0.41
1:B:165:LEU:HD12	1:B:177:THR:O	2.20	0.41
1:D:217:ILE:CD1	1:D:219:MET:HG3	2.50	0.41
1:A:93:TYR:CE1	1:A:95:LEU:HB2	2.55	0.41
1:C:45:PRO:HB2	1:C:167:LEU:HD13	2.03	0.41
1:A:146:GLU:C	1:A:148:ASN:H	2.23	0.41
1:D:71:LEU:HB3	1:D:179:PHE:CD2	2.55	0.41
1:A:165:LEU:HD12	1:A:177:THR:O	2.20	0.41
1:D:214:VAL:HG23	1:D:215:ASP:OD1	2.20	0.41
1:B:93:TYR:CE1	1:B:95:LEU:HB2	2.55	0.41
1:C:154:HIS:O	1:C:155:ALA:C	2.59	0.41
1:B:146:GLU:C	1:B:148:ASN:H	2.23	0.41
1:D:71:LEU:HB3	1:D:179:PHE:CD2	2.55	0.41
1:D:146:GLU:C	1:D:148:ASN:H	2.23	0.41
1:C:165:LEU:HD12	1:C:177:THR:O	2.20	0.41
1:D:146:GLU:C	1:D:148:ASN:H	2.23	0.41
1:B:165:LEU:CD1	1:B:178:GLN:HG3	2.50	0.41
1:D:165:LEU:HD12	1:D:177:THR:O	2.20	0.41
1:A:80:ILE:HG21	1:A:170:ILE:HG13	2.03	0.41
1:A:165:LEU:CD1	1:A:178:GLN:HG3	2.50	0.41
1:C:214:VAL:HG23	1:C:215:ASP:OD1	2.20	0.41
1:B:80:ILE:HG21	1:B:170:ILE:HG13	2.03	0.41
1:C:146:GLU:C	1:C:148:ASN:H	2.23	0.41
1:D:37:VAL:HG12	1:C:15:ASN:OD1	2.20	0.41

Continued on next page...

Continued from previous page...

Atom-1	Atom-2	Distance(Å)	Clash(Å)
1:B:238:ILE:HA	1:B:238:ILE:HD13	1.91	0.41
1:A:98:ALA:HB1	1:A:112:VAL:HG22	2.02	0.41
1:D:98:ALA:HB1	1:D:112:VAL:HG22	2.02	0.41
1:D:80:ILE:HG21	1:D:170:ILE:HG13	2.03	0.41
1:C:80:ILE:HG21	1:C:170:ILE:HG13	2.03	0.41
1:A:238:ILE:HD13	1:A:238:ILE:HA	1.91	0.41
1:B:98:ALA:HB1	1:B:112:VAL:HG22	2.02	0.41
1:C:80:ILE:HG21	1:C:170:ILE:HG13	2.03	0.41
1:B:80:ILE:HG21	1:B:170:ILE:HG13	2.03	0.41
1:B:154:HIS:O	1:B:155:ALA:C	2.59	0.41
1:C:91:GLN:HA	1:C:92:PRO:HD3	1.92	0.41
1:D:165:LEU:HD12	1:D:177:THR:O	2.20	0.41
1:C:136:ASN:HD22	1:C:219:MET:CG	2.31	0.41
1:A:80:ILE:HG21	1:A:170:ILE:HG13	2.03	0.41
1:A:154:HIS:O	1:A:155:ALA:C	2.59	0.41
1:D:223:PHE:HZ	1:C:234:TYR:CE1	2.33	0.41
1:B:64:ARG:HB2	1:B:67:ARG:HG2	2.01	0.41
1:B:217:ILE:CD1	1:B:219:MET:HG3	2.50	0.41
1:D:218:GLY:O	1:D:220:LEU:HD13	2.20	0.41
1:C:64:ARG:HB2	1:C:67:ARG:HG2	2.01	0.41
1:A:64:ARG:HB2	1:A:67:ARG:HG2	2.01	0.41
1:A:217:ILE:CD1	1:A:219:MET:HG3	2.50	0.41
1:D:93:TYR:CE1	1:D:95:LEU:HB2	2.55	0.41
1:D:58:TYR:CZ	1:D:252:LEU:HG	2.56	0.41
1:D:98:ALA:HB1	1:D:112:VAL:HG22	2.02	0.41
1:C:214:VAL:HG23	1:C:215:ASP:OD1	2.20	0.41
1:C:58:TYR:N	1:C:58:TYR:CD1	2.89	0.41
1:D:37:VAL:HG12	1:C:15:ASN:OD1	2.21	0.41
1:B:75:SER:O	1:B:78:PRO:HD2	2.21	0.40
1:C:75:SER:O	1:C:78:PRO:HD2	2.21	0.40
1:A:75:SER:O	1:A:78:PRO:HD2	2.21	0.40
1:A:214:VAL:HG23	1:A:215:ASP:OD1	2.20	0.40
1:D:80:ILE:HG21	1:D:170:ILE:HG13	2.03	0.40
1:D:154:HIS:O	1:D:155:ALA:C	2.59	0.40
1:A:75:SER:O	1:A:78:PRO:HD2	2.21	0.40
1:C:75:SER:O	1:C:78:PRO:HD2	2.21	0.40
1:B:75:SER:O	1:B:78:PRO:HD2	2.21	0.40
1:B:214:VAL:HG23	1:B:215:ASP:OD1	2.20	0.40
1:C:39:HIS:HE1	1:C:215:ASP:OD1	2.04	0.40
1:C:59:TYR:OH	1:C:182:GLU:OE2	2.34	0.40
1:A:58:TYR:CZ	1:A:252:LEU:HG	2.56	0.40
1:B:58:TYR:CZ	1:B:252:LEU:HG	2.56	0.40

Continued on next page...

Continued from previous page...

Atom-1	Atom-2	Distance(Å)	Clash(Å)
1:D:58:TYR:CD1	1:D:58:TYR:N	2.89	0.40
1:C:58:TYR:CZ	1:C:252:LEU:HG	2.56	0.40
1:B:39:HIS:HE1	1:B:215:ASP:OD1	2.04	0.40
1:C:220:LEU:HA	1:C:221:PRO:HD3	1.87	0.40
1:D:22:LEU:HA	1:D:23:PRO:HD3	1.95	0.40
1:A:39:HIS:HE1	1:A:215:ASP:OD1	2.04	0.40
1:D:37:VAL:HG13	1:C:15:ASN:ND2	2.14	0.40
1:C:165:LEU:HD12	1:C:177:THR:O	2.20	0.40
1:A:58:TYR:N	1:A:58:TYR:CD1	2.89	0.40
1:B:58:TYR:CZ	1:B:252:LEU:HG	2.56	0.40
1:C:154:HIS:O	1:C:155:ALA:C	2.59	0.40
1:B:58:TYR:N	1:B:58:TYR:CD1	2.89	0.40
1:A:58:TYR:CZ	1:A:252:LEU:HG	2.56	0.40
1:A:165:LEU:HD12	1:A:177:THR:O	2.20	0.40
1:D:75:SER:O	1:D:78:PRO:HD2	2.21	0.40
1:D:58:TYR:CD1	1:D:58:TYR:N	2.89	0.40
1:B:116:THR:HG23	1:B:129:ILE:HB	2.04	0.40
1:B:165:LEU:HD12	1:B:177:THR:O	2.20	0.40
1:D:75:SER:O	1:D:78:PRO:HD2	2.21	0.40
1:D:154:HIS:O	1:D:155:ALA:C	2.59	0.40
1:A:116:THR:HG23	1:A:129:ILE:HB	2.04	0.40

There are no symmetry-related clashes.

5.3 Torsion angles

5.3.1 Protein backbone ⓘ

In the following table, the Percentiles column shows the percent Ramachandran outliers of the chain as a percentile score with respect to all X-ray entries followed by that with respect to entries of similar resolution. The Analysed column shows the number of residues for which the backbone conformation was analysed, and the total number of residues.

Mol	Chain	Analysed	Favoured	Allowed	Outliers	Percentiles	
1	1-A	240/287 (84%)	208 (87%)	27 (11%)	5 (2%)	11	36
1	1-B	240/287 (84%)	209 (87%)	26 (11%)	5 (2%)	11	36
1	1-C	240/287 (84%)	209 (87%)	26 (11%)	5 (2%)	11	36
1	1-D	240/287 (84%)	208 (87%)	27 (11%)	5 (2%)	11	36
1	2-A	240/287 (84%)	209 (87%)	26 (11%)	5 (2%)	11	36
1	2-B	240/287 (84%)	208 (87%)	27 (11%)	5 (2%)	11	36

Continued on next page...

Continued from previous page...

Mol	Chain	Analysed	Favoured	Allowed	Outliers	Percentiles	
1	2-C	240/287 (84%)	208 (87%)	27 (11%)	5 (2%)	11	36
1	2-D	240/287 (84%)	209 (87%)	26 (11%)	5 (2%)	11	36
All	All	1920/2296 (84%)	1668 (87%)	212 (11%)	40 (2%)	11	36

All (40) Ramachandran outliers are listed below:

Mol	Chain	Res	Type
1	1-A	82	ARG
1	1-B	82	ARG
1	1-D	82	ARG
1	1-C	82	ARG
1	2-A	82	ARG
1	2-B	82	ARG
1	2-D	82	ARG
1	2-C	82	ARG
1	1-A	28	LEU
1	1-B	28	LEU
1	1-D	28	LEU
1	1-C	28	LEU
1	2-A	28	LEU
1	2-B	28	LEU
1	2-D	28	LEU
1	2-C	28	LEU
1	1-A	15	ASN
1	1-B	15	ASN
1	1-D	15	ASN
1	1-C	15	ASN
1	2-A	15	ASN
1	2-B	15	ASN
1	2-D	15	ASN
1	2-C	15	ASN
1	1-A	78	PRO
1	1-B	78	PRO
1	1-D	78	PRO
1	1-C	78	PRO
1	2-A	78	PRO
1	2-B	78	PRO
1	2-D	78	PRO
1	2-C	78	PRO
1	1-A	225	PRO
1	1-B	225	PRO

Continued on next page...

Continued from previous page...

Mol	Chain	Res	Type
1	1-D	225	PRO
1	1-C	225	PRO
1	2-A	225	PRO
1	2-B	225	PRO
1	2-D	225	PRO
1	2-C	225	PRO

5.3.2 Protein sidechains ⓘ

In the following table, the Percentiles column shows the percent sidechain outliers of the chain as a percentile score with respect to all X-ray entries followed by that with respect to entries of similar resolution. The Analysed column shows the number of residues for which the sidechain conformation was analysed, and the total number of residues.

Mol	Chain	Analysed	Rotameric	Outliers	Percentiles	
1	1-A	208/245 (85%)	189 (91%)	19 (9%)	14	36
1	1-B	208/245 (85%)	188 (90%)	20 (10%)	12	32
1	1-C	208/245 (85%)	189 (91%)	19 (9%)	14	36
1	1-D	208/245 (85%)	189 (91%)	19 (9%)	14	36
1	2-A	208/245 (85%)	188 (90%)	20 (10%)	12	32
1	2-B	208/245 (85%)	189 (91%)	19 (9%)	14	36
1	2-C	208/245 (85%)	189 (91%)	19 (9%)	14	36
1	2-D	208/245 (85%)	188 (90%)	20 (10%)	12	32
All	All	1664/1960 (85%)	1509 (91%)	155 (9%)	13	35

All (155) residues with a non-rotameric sidechain are listed below:

Mol	Chain	Res	Type
1	1-A	18	ARG
1	1-A	22	LEU
1	1-A	53	LEU
1	1-A	57	VAL
1	1-A	69	VAL
1	1-A	80	ILE
1	1-A	87	ASP
1	1-A	90	LYS
1	1-A	117	GLU
1	1-A	136	ASN
1	1-A	149	LEU

Continued on next page...

Continued from previous page...

Mol	Chain	Res	Type
1	1-A	175	GLU
1	1-A	184	ARG
1	1-A	195	LEU
1	1-A	225	PRO
1	1-A	226	GLU
1	1-A	230	THR
1	1-A	236	LEU
1	1-A	252	LEU
1	1-B	18	ARG
1	1-B	22	LEU
1	1-B	53	LEU
1	1-B	57	VAL
1	1-B	69	VAL
1	1-B	80	ILE
1	1-B	87	ASP
1	1-B	90	LYS
1	1-B	117	GLU
1	1-B	136	ASN
1	1-B	140	SER
1	1-B	149	LEU
1	1-B	175	GLU
1	1-B	184	ARG
1	1-B	195	LEU
1	1-B	225	PRO
1	1-B	226	GLU
1	1-B	230	THR
1	1-B	236	LEU
1	1-B	252	LEU
1	1-D	18	ARG
1	1-D	22	LEU
1	1-D	53	LEU
1	1-D	57	VAL
1	1-D	69	VAL
1	1-D	80	ILE
1	1-D	87	ASP
1	1-D	90	LYS
1	1-D	117	GLU
1	1-D	136	ASN
1	1-D	149	LEU
1	1-D	175	GLU
1	1-D	184	ARG
1	1-D	195	LEU

Continued on next page...

Continued from previous page...

Mol	Chain	Res	Type
1	1-D	225	PRO
1	1-D	226	GLU
1	1-D	230	THR
1	1-D	236	LEU
1	1-D	252	LEU
1	1-C	18	ARG
1	1-C	22	LEU
1	1-C	53	LEU
1	1-C	57	VAL
1	1-C	69	VAL
1	1-C	80	ILE
1	1-C	87	ASP
1	1-C	90	LYS
1	1-C	117	GLU
1	1-C	136	ASN
1	1-C	149	LEU
1	1-C	175	GLU
1	1-C	184	ARG
1	1-C	195	LEU
1	1-C	225	PRO
1	1-C	226	GLU
1	1-C	230	THR
1	1-C	236	LEU
1	1-C	252	LEU
1	2-A	18	ARG
1	2-A	22	LEU
1	2-A	53	LEU
1	2-A	57	VAL
1	2-A	69	VAL
1	2-A	80	ILE
1	2-A	87	ASP
1	2-A	90	LYS
1	2-A	117	GLU
1	2-A	136	ASN
1	2-A	140	SER
1	2-A	149	LEU
1	2-A	175	GLU
1	2-A	184	ARG
1	2-A	195	LEU
1	2-A	225	PRO
1	2-A	226	GLU
1	2-A	230	THR

Continued on next page...

Continued from previous page...

Mol	Chain	Res	Type
1	2-A	236	LEU
1	2-A	252	LEU
1	2-B	18	ARG
1	2-B	22	LEU
1	2-B	53	LEU
1	2-B	57	VAL
1	2-B	69	VAL
1	2-B	80	ILE
1	2-B	87	ASP
1	2-B	90	LYS
1	2-B	117	GLU
1	2-B	136	ASN
1	2-B	149	LEU
1	2-B	175	GLU
1	2-B	184	ARG
1	2-B	195	LEU
1	2-B	225	PRO
1	2-B	226	GLU
1	2-B	230	THR
1	2-B	236	LEU
1	2-B	252	LEU
1	2-D	18	ARG
1	2-D	22	LEU
1	2-D	53	LEU
1	2-D	57	VAL
1	2-D	69	VAL
1	2-D	80	ILE
1	2-D	87	ASP
1	2-D	90	LYS
1	2-D	117	GLU
1	2-D	136	ASN
1	2-D	140	SER
1	2-D	149	LEU
1	2-D	175	GLU
1	2-D	184	ARG
1	2-D	195	LEU
1	2-D	225	PRO
1	2-D	226	GLU
1	2-D	230	THR
1	2-D	236	LEU
1	2-D	252	LEU
1	2-C	18	ARG

Continued on next page...

Continued from previous page...

Mol	Chain	Res	Type
1	2-C	22	LEU
1	2-C	53	LEU
1	2-C	57	VAL
1	2-C	69	VAL
1	2-C	80	ILE
1	2-C	87	ASP
1	2-C	90	LYS
1	2-C	117	GLU
1	2-C	136	ASN
1	2-C	149	LEU
1	2-C	175	GLU
1	2-C	184	ARG
1	2-C	195	LEU
1	2-C	225	PRO
1	2-C	226	GLU
1	2-C	230	THR
1	2-C	236	LEU
1	2-C	252	LEU

Some sidechains can be flipped to improve hydrogen bonding and reduce clashes. All (56) such sidechains are listed below:

Mol	Chain	Res	Type
1	1-A	27	GLN
1	1-A	39	HIS
1	1-A	79	GLN
1	1-A	132	GLN
1	1-A	136	ASN
1	1-A	148	ASN
1	1-A	183	HIS
1	1-B	27	GLN
1	1-B	39	HIS
1	1-B	79	GLN
1	1-B	132	GLN
1	1-B	136	ASN
1	1-B	148	ASN
1	1-B	183	HIS
1	1-D	27	GLN
1	1-D	39	HIS
1	1-D	79	GLN
1	1-D	132	GLN
1	1-D	136	ASN
1	1-D	148	ASN

Continued on next page...

Continued from previous page...

Mol	Chain	Res	Type
1	1-D	183	HIS
1	1-C	27	GLN
1	1-C	39	HIS
1	1-C	79	GLN
1	1-C	132	GLN
1	1-C	136	ASN
1	1-C	148	ASN
1	1-C	183	HIS
1	2-A	27	GLN
1	2-A	39	HIS
1	2-A	79	GLN
1	2-A	132	GLN
1	2-A	136	ASN
1	2-A	148	ASN
1	2-A	183	HIS
1	2-B	27	GLN
1	2-B	39	HIS
1	2-B	79	GLN
1	2-B	132	GLN
1	2-B	136	ASN
1	2-B	148	ASN
1	2-B	183	HIS
1	2-D	27	GLN
1	2-D	39	HIS
1	2-D	79	GLN
1	2-D	132	GLN
1	2-D	136	ASN
1	2-D	148	ASN
1	2-D	183	HIS
1	2-C	27	GLN
1	2-C	39	HIS
1	2-C	79	GLN
1	2-C	132	GLN
1	2-C	136	ASN
1	2-C	148	ASN
1	2-C	183	HIS

5.3.3 RNA ⓘ

There are no RNA chains in this entry.

5.4 Non-standard residues in protein, DNA, RNA chains ⓘ

There are no non-standard protein/DNA/RNA residues in this entry.

5.5 Carbohydrates ⓘ

There are no carbohydrates in this entry.

5.6 Ligand geometry ⓘ

8 ligands are modelled in this entry.

In the following table, the Counts columns list the number of bonds (or angles) for which Mogul statistics could be retrieved, the number of bonds (or angles) that are observed in the model and the number of bonds (or angles) that are defined in the chemical component dictionary. The Link column lists molecule types, if any, to which the group is linked. The Z score for a bond length (or angle) is the number of standard deviations the observed value is removed from the expected value. A bond length (or angle) with $|Z| > 2$ is considered an outlier worth inspection. RMSZ is the root-mean-square of all Z scores of the bond lengths (or angles).

Mol	Type	Chain	Res	Link	Bond lengths			Bond angles		
					Counts	RMSZ	$\# Z > 2$	Counts	RMSZ	$\# Z > 2$
2	NAG	1-A	430	1	12,14,15	0.43	0	15,19,21	0.71	0
2	NAG	1-B	430	1	12,14,15	0.42	0	15,19,21	0.71	0
2	NAG	1-C	430	1	12,14,15	0.43	0	15,19,21	0.71	0
2	NAG	1-D	430	1	12,14,15	0.46	0	15,19,21	0.70	0
2	NAG	2-A	430	1	12,14,15	0.42	0	15,19,21	0.71	0
2	NAG	2-B	430	1	12,14,15	0.43	0	15,19,21	0.71	0
2	NAG	2-C	430	1	12,14,15	0.41	0	15,19,21	0.70	0
2	NAG	2-D	430	1	12,14,15	0.42	0	15,19,21	0.71	0

In the following table, the Chirals column lists the number of chiral outliers, the number of chiral centers analysed, the number of these observed in the model and the number defined in the chemical component dictionary. Similar counts are reported in the Torsion and Rings columns. '-' means no outliers of that kind were identified.

Mol	Type	Chain	Res	Link	Chirals	Torsions	Rings
2	NAG	1-A	430	1	-	1/6/23/26	0/1/1/1
2	NAG	1-B	430	1	-	1/6/23/26	0/1/1/1
2	NAG	1-C	430	1	-	1/6/23/26	0/1/1/1
2	NAG	1-D	430	1	-	1/6/23/26	0/1/1/1
2	NAG	2-A	430	1	1/1/5/7	1/6/23/26	0/1/1/1
2	NAG	2-B	430	1	1/1/5/7	1/6/23/26	0/1/1/1
2	NAG	2-C	430	1	-	1/6/23/26	0/1/1/1

Continued on next page...

Continued from previous page...

Mol	Type	Chain	Res	Link	Chirals	Torsions	Rings
2	NAG	2-D	430	1	1/1/5/7	1/6/23/26	0/1/1/1

There are no bond length outliers.

There are no bond angle outliers.

All (3) chirality outliers are listed below:

Mol	Chain	Res	Type	Atom
2	2-A	430	NAG	C1
2	2-B	430	NAG	C1
2	2-D	430	NAG	C1

All (8) torsion outliers are listed below:

Mol	Chain	Res	Type	Atoms
2	2-A	430	NAG	C1-C2-N2-C7
2	1-B	430	NAG	C1-C2-N2-C7
2	2-D	430	NAG	C1-C2-N2-C7
2	1-A	430	NAG	C1-C2-N2-C7
2	2-B	430	NAG	C1-C2-N2-C7
2	2-C	430	NAG	C1-C2-N2-C7
2	1-C	430	NAG	C1-C2-N2-C7
2	1-D	430	NAG	C1-C2-N2-C7

There are no ring outliers.

5.7 Other polymers ⓘ

There are no such residues in this entry.

5.8 Polymer linkage issues

There are no chain breaks in this entry.

6 Fit of model and data ⓘ

6.1 Protein, DNA and RNA chains ⓘ

In the following table, the column labelled ‘#RSRZ> 2’ contains the number (and percentage) of RSRZ outliers, followed by percent RSRZ outliers for the chain as percentile scores relative to all X-ray entries and entries of similar resolution. The OWAB column contains the minimum, median, 95th percentile and maximum values of the occupancy-weighted average B-factor per residue. The column labelled ‘Q< 0.9’ lists the number of (and percentage) of residues with an average occupancy less than 0.9.

Mol	Chain	Analysed	<RSRZ>	#RSRZ>2	OWAB(Å ²)	Q<0.9
1	1-A	242/287 (84%)	-0.12	11 (4%) 32 38	13, 31, 55, 68	242 (100%)
1	1-B	242/287 (84%)	-0.15	11 (4%) 32 38	12, 30, 56, 68	242 (100%)
1	1-C	242/287 (84%)	1.12	50 (20%) 1 2	13, 30, 56, 68	242 (100%)
1	1-D	242/287 (84%)	1.25	50 (20%) 1 2	13, 30, 55, 68	242 (100%)
1	2-A	242/287 (84%)	-0.12	11 (4%) 32 38	13, 31, 55, 68	242 (100%)
1	2-B	242/287 (84%)	-0.15	11 (4%) 32 38	12, 30, 56, 68	242 (100%)
1	2-C	242/287 (84%)	1.12	50 (20%) 1 2	13, 30, 56, 68	242 (100%)
1	2-D	242/287 (84%)	1.25	50 (20%) 1 2	13, 30, 55, 68	242 (100%)
All	All	1936/2296 (84%)	0.52	244 (12%) 5 5	12, 30, 56, 68	1936 (100%)

All (244) RSRZ outliers are listed below:

Mol	Chain	Res	Type	RSRZ
1	1-C	86	GLU	9.3
1	2-C	86	GLU	9.3
1	1-C	253	LEU	8.8
1	2-C	253	LEU	8.8
1	1-C	25	LEU	8.2
1	2-C	25	LEU	8.2
1	1-D	78	PRO	7.0
1	2-D	78	PRO	7.0
1	1-D	126	ALA	6.5
1	2-D	126	ALA	6.5
1	1-D	79	GLN	5.8
1	2-D	79	GLN	5.8
1	1-D	122	LYS	5.5
1	2-D	122	LYS	5.5
1	1-A	90	LYS	5.2
1	1-C	244	PRO	5.2

Continued on next page...

Continued from previous page...

Mol	Chain	Res	Type	RSRZ
1	2-A	90	LYS	5.2
1	2-C	244	PRO	5.2
1	1-B	90	LYS	4.9
1	2-B	90	LYS	4.9
1	1-D	121	ASN	4.8
1	2-D	121	ASN	4.8
1	1-C	172	ASP	4.7
1	2-C	172	ASP	4.7
1	1-B	87	ASP	4.4
1	2-B	87	ASP	4.4
1	1-D	214	VAL	4.3
1	2-D	214	VAL	4.3
1	1-C	239	ALA	4.2
1	2-C	239	ALA	4.2
1	1-A	87	ASP	4.2
1	2-A	87	ASP	4.2
1	1-D	22	LEU	4.1
1	2-D	22	LEU	4.1
1	1-D	66	CYS	4.0
1	2-D	66	CYS	4.0
1	1-D	93	TYR	3.9
1	2-D	93	TYR	3.9
1	1-D	92	PRO	3.9
1	2-D	92	PRO	3.9
1	1-C	27	GLN	3.8
1	2-C	27	GLN	3.8
1	1-C	191	TYR	3.7
1	2-C	191	TYR	3.7
1	1-A	32	PRO	3.7
1	2-A	32	PRO	3.7
1	1-C	87	ASP	3.6
1	2-C	87	ASP	3.6
1	1-D	18	ARG	3.6
1	2-D	18	ARG	3.6
1	1-D	209	GLN	3.6
1	2-D	209	GLN	3.6
1	1-C	90	LYS	3.5
1	2-C	90	LYS	3.5
1	1-D	82	ARG	3.4
1	2-D	82	ARG	3.4
1	1-D	237	LYS	3.4
1	2-D	237	LYS	3.4

Continued on next page...

Continued from previous page...

Mol	Chain	Res	Type	RSRZ
1	1-C	80	ILE	3.4
1	2-C	80	ILE	3.4
1	1-B	122	LYS	3.4
1	2-B	122	LYS	3.4
1	1-D	65	ALA	3.3
1	2-D	65	ALA	3.3
1	1-D	251	THR	3.3
1	2-D	251	THR	3.3
1	1-D	64	ARG	3.2
1	1-C	16	ARG	3.2
1	2-D	64	ARG	3.2
1	2-C	16	ARG	3.2
1	1-D	131	THR	3.2
1	2-D	131	THR	3.2
1	1-D	133	PRO	3.2
1	2-D	133	PRO	3.2
1	1-C	60	ALA	3.2
1	2-C	60	ALA	3.2
1	1-C	94	ASN	3.2
1	2-C	94	ASN	3.2
1	1-D	223	PHE	3.2
1	2-D	223	PHE	3.2
1	1-A	86	GLU	3.1
1	2-A	86	GLU	3.1
1	1-D	62	LEU	3.0
1	2-D	62	LEU	3.0
1	1-D	246	ALA	3.0
1	1-C	73	ALA	3.0
1	2-D	246	ALA	3.0
1	2-C	73	ALA	3.0
1	1-C	69	VAL	3.0
1	2-C	69	VAL	3.0
1	1-C	206	GLN	2.9
1	2-C	206	GLN	2.9
1	1-D	195	LEU	2.9
1	2-D	195	LEU	2.9
1	1-C	35	ARG	2.9
1	2-C	35	ARG	2.9
1	1-C	234	TYR	2.9
1	2-C	234	TYR	2.9
1	1-C	250	SER	2.9
1	2-C	250	SER	2.9

Continued on next page...

Continued from previous page...

Mol	Chain	Res	Type	RSRZ
1	1-B	32	PRO	2.9
1	2-B	32	PRO	2.9
1	1-D	33	GLY	2.9
1	2-D	33	GLY	2.9
1	1-C	77	ALA	2.8
1	2-C	77	ALA	2.8
1	1-C	82	ARG	2.8
1	2-C	82	ARG	2.8
1	1-D	165	LEU	2.8
1	2-D	165	LEU	2.8
1	1-A	118	CYS	2.8
1	2-A	118	CYS	2.8
1	1-A	119	SER	2.8
1	1-B	86	GLU	2.8
1	2-A	119	SER	2.8
1	2-B	86	GLU	2.8
1	1-C	132	GLN	2.8
1	2-C	132	GLN	2.8
1	1-D	157	ALA	2.8
1	1-D	253	LEU	2.8
1	2-D	157	ALA	2.8
1	2-D	253	LEU	2.8
1	1-B	91	GLN	2.7
1	2-B	91	GLN	2.7
1	1-C	233	VAL	2.7
1	2-C	233	VAL	2.7
1	1-D	156	PRO	2.7
1	2-D	156	PRO	2.7
1	1-C	209	GLN	2.7
1	2-C	209	GLN	2.7
1	1-A	122	LYS	2.7
1	2-A	122	LYS	2.7
1	1-D	203	LEU	2.6
1	2-D	203	LEU	2.6
1	1-C	213	THR	2.6
1	2-C	213	THR	2.6
1	1-C	49	GLN	2.6
1	2-C	49	GLN	2.6
1	1-C	72	ASN	2.6
1	2-C	72	ASN	2.6
1	1-D	110	ILE	2.6
1	2-D	110	ILE	2.6

Continued on next page...

Continued from previous page...

Mol	Chain	Res	Type	RSRZ
1	1-D	229	ARG	2.6
1	2-D	229	ARG	2.6
1	1-C	75	SER	2.5
1	2-C	75	SER	2.5
1	1-D	115	TYR	2.5
1	2-D	115	TYR	2.5
1	1-C	37	VAL	2.5
1	1-C	88	VAL	2.5
1	2-C	37	VAL	2.5
1	2-C	88	VAL	2.5
1	1-D	20	LYS	2.5
1	2-D	20	LYS	2.5
1	1-D	215	ASP	2.5
1	2-D	215	ASP	2.5
1	1-C	173	TRP	2.5
1	2-C	173	TRP	2.5
1	1-D	244	PRO	2.4
1	2-D	244	PRO	2.4
1	1-D	16	ARG	2.4
1	1-C	229	ARG	2.4
1	2-D	16	ARG	2.4
1	2-C	229	ARG	2.4
1	1-A	85	SER	2.4
1	2-A	85	SER	2.4
1	1-B	27	GLN	2.4
1	2-B	27	GLN	2.4
1	1-C	144	VAL	2.4
1	2-C	144	VAL	2.4
1	1-C	74	PRO	2.4
1	1-C	128	PRO	2.4
1	2-C	74	PRO	2.4
1	2-C	128	PRO	2.4
1	1-C	126	ALA	2.4
1	2-C	126	ALA	2.4
1	1-B	121	ASN	2.4
1	2-B	121	ASN	2.4
1	1-C	17	PHE	2.4
1	2-C	17	PHE	2.4
1	1-D	149	LEU	2.4
1	2-D	149	LEU	2.4
1	1-D	254	PRO	2.4
1	2-D	254	PRO	2.4

Continued on next page...

Continued from previous page...

Mol	Chain	Res	Type	RSRZ
1	1-D	63	GLU	2.4
1	2-D	63	GLU	2.4
1	1-C	238	ILE	2.3
1	2-C	238	ILE	2.3
1	1-C	24	VAL	2.3
1	2-C	24	VAL	2.3
1	1-D	80	ILE	2.3
1	1-D	183	HIS	2.3
1	1-C	68	SER	2.3
1	2-D	80	ILE	2.3
1	2-D	183	HIS	2.3
1	2-C	68	SER	2.3
1	1-D	123	SER	2.3
1	2-D	123	SER	2.3
1	1-D	189	CYS	2.2
1	2-D	189	CYS	2.2
1	1-C	26	ASP	2.2
1	2-C	26	ASP	2.2
1	1-A	88	VAL	2.2
1	2-A	88	VAL	2.2
1	1-D	239	ALA	2.2
1	2-D	239	ALA	2.2
1	1-A	82	ARG	2.2
1	2-A	82	ARG	2.2
1	1-C	119	SER	2.2
1	2-C	119	SER	2.2
1	1-C	19	GLY	2.2
1	2-C	19	GLY	2.2
1	1-B	119	SER	2.1
1	2-B	119	SER	2.1
1	1-D	247	PRO	2.1
1	2-D	247	PRO	2.1
1	1-D	21	ASP	2.1
1	1-D	26	ASP	2.1
1	2-D	21	ASP	2.1
1	2-D	26	ASP	2.1
1	1-C	136	ASN	2.1
1	2-C	136	ASN	2.1
1	1-D	60	ALA	2.1
1	2-D	60	ALA	2.1
1	1-B	82	ARG	2.1
1	2-B	82	ARG	2.1

Continued on next page...

Continued from previous page...

Mol	Chain	Res	Type	RSRZ
1	1-B	18	ARG	2.1
1	2-B	18	ARG	2.1
1	1-C	14	PRO	2.0
1	2-C	14	PRO	2.0
1	1-A	27	GLN	2.0
1	2-A	27	GLN	2.0
1	1-D	233	VAL	2.0
1	2-D	233	VAL	2.0
1	1-C	42	ALA	2.0
1	1-C	143	ALA	2.0
1	2-C	42	ALA	2.0
1	2-C	143	ALA	2.0
1	1-C	81	VAL	2.0
1	2-C	81	VAL	2.0
1	1-D	17	PHE	2.0
1	2-D	17	PHE	2.0
1	1-C	105	ASN	2.0
1	2-C	105	ASN	2.0

6.2 Non-standard residues in protein, DNA, RNA chains ⓘ

There are no non-standard protein/DNA/RNA residues in this entry.

6.3 Carbohydrates ⓘ

There are no carbohydrates in this entry.

6.4 Ligands ⓘ

In the following table, the Atoms column lists the number of modelled atoms in the group and the number defined in the chemical component dictionary. LLDF column lists the quality of electron density of the group with respect to its neighbouring residues in protein, DNA or RNA chains. The B-factors column lists the minimum, median, 95th percentile and maximum values of B factors of atoms in the group. The column labelled 'Q < 0.9' lists the number of atoms with occupancy less than 0.9.

Mol	Type	Chain	Res	Atoms	RSR	LLDF	B-factors(Å ²)	Q<0.9
2	NAG	2-D	430	14/15	0.60	3.77	28,42,45,50	14
2	NAG	1-D	430	14/15	0.60	2.83	30,38,41,46	14
2	NAG	1-B	430	14/15	0.20	0.97	40,53,61,62	14

Continued on next page...

Continued from previous page...

Mol	Type	Chain	Res	Atoms	RSR	LLDF	B-factors(\AA^2)	Q<0.9
2	NAG	2-B	430	14/15	0.20	0.82	48,60,64,66	14
2	NAG	2-A	430	14/15	0.19	0.58	40,53,61,62	14
2	NAG	1-A	430	14/15	0.19	0.46	48,60,64,66	14
2	NAG	2-C	430	14/15	0.25	-0.77	30,33,42,45	14
2	NAG	1-C	430	14/15	0.25	-0.83	34,37,41,44	14

6.5 Other polymers ⓘ

There are no such residues in this entry.