



Full wwPDB X-ray Structure Validation Report ⓘ

Feb 28, 2014 – 05:17 AM GMT

PDB ID : 3L2K
Title : Structure of phenazine antibiotic biosynthesis protein with substrate
Authors : Bera, A.K.; Atanasova, V.; Parsons, J.F.
Deposited on : 2009-12-15
Resolution : 2.80 Å(reported)

This is a full wwPDB validation report for a publicly released PDB entry.
We welcome your comments at validation@mail.wwpdb.org
A user guide is available at <http://wwpdb.org/ValidationPDFNotes.html>

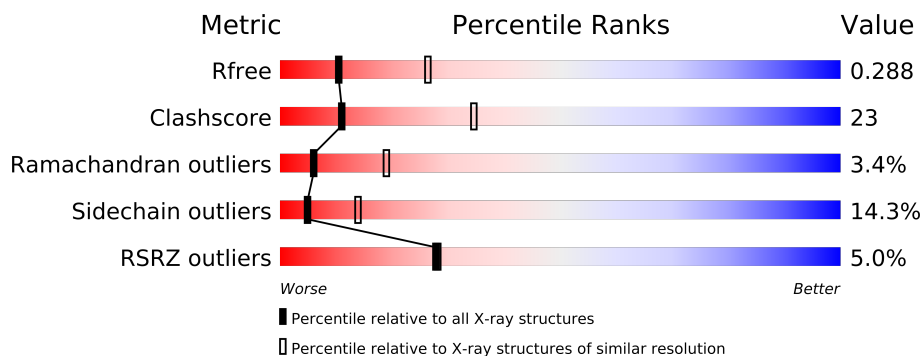
The following versions of software and data (see [references](#)) were used in the production of this report:

MolProbity : 4.02b-467
Mogul : 1.15 2013
Xtriage (Phenix) : dev-1323
EDS : stable22639
Percentile statistics : 21963
Refmac : 5.8.0049
CCP4 : 6.3.0 (Settle)
Ideal geometry (proteins) : Engh & Huber (2001)
Ideal geometry (DNA, RNA) : Parkinson et. al. (1996)
Validation Pipeline (wwPDB-VP) : stable22683

1 Overall quality at a glance

The reported resolution of this entry is 2.80 Å.

Percentile scores (ranging between 0-100) for global validation metrics of the entry are shown in the following graphic. The table shows the number of entries on which the scores are based.



Metric	Whole archive (#Entries)	Similar resolution (#Entries, resolution range(Å))
R_{free}	66092	1799 (2.80-2.80)
Clashscore	79885	2295 (2.80-2.80)
Ramachandran outliers	78287	2252 (2.80-2.80)
Sidechain outliers	78261	2254 (2.80-2.80)
RSRZ outliers	66119	1802 (2.80-2.80)

The table below summarises the geometric issues observed across the polymeric chains and their fit to the electron density. The red, orange, yellow and green segments on the lower bar indicate the fraction of residues that contain outliers for ≥ 3 , 2, 1 and 0 types of geometric quality criteria. The upper red bar (where present) indicates the fraction of residues that have poor fit to the electron density.

Mol	Chain	Length	Quality of chain
1	A	366	
1	B	366	

2 Entry composition i

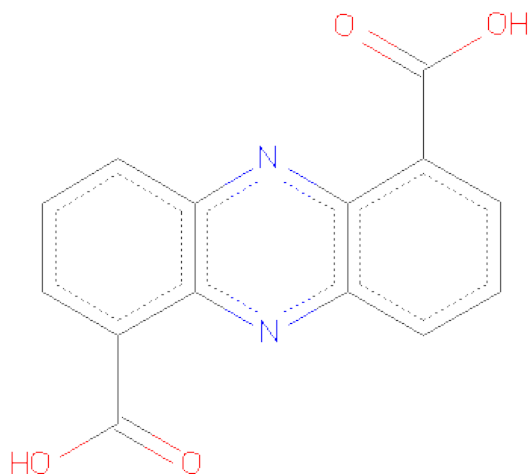
There are 3 unique types of molecules in this entry. The entry contains 5594 atoms, of which 0 are hydrogen and 0 are deuterium.

In the tables below, the ZeroOcc column contains the number of atoms modelled with zero occupancy, the AltConf column contains the number of residues with at least one atom in alternate conformation and the Trace column contains the number of residues modelled with at most 2 atoms.

- Molecule 1 is a protein called EhpF.

Mol	Chain	Residues	Atoms					ZeroOcc	AltConf	Trace
1	A	352	Total	C	N	O	S	0	0	0
			2769	1758	478	524	9			
1	B	352	Total	C	N	O	S	0	0	0
			2769	1758	478	524	9			

- Molecule 2 is PHENAZINE-1,6-DICARBOXYLICACID (three-letter code: PXC) (formula: $C_{14}H_8N_2O_4$).



Mol	Chain	Residues	Atoms				ZeroOcc	AltConf
2	A	1	Total	C	N	O	0	0
			20	14	2	4		
2	B	1	Total	C	N	O	0	0
			20	14	2	4		

- Molecule 3 is water.

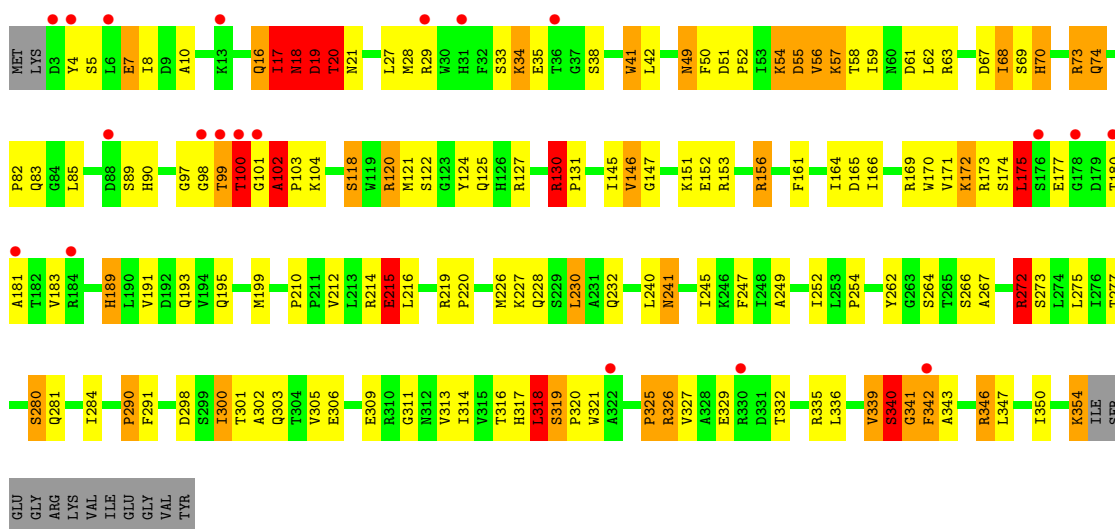
Mol	Chain	Residues	Atoms		ZeroOcc	AltConf
3	A	9	Total 9	O 9	0	0
3	B	7	Total 7	O 7	0	0

3 Residue-property plots

These plots are drawn for all protein, RNA and DNA chains in the entry. The first graphic for a chain summarises the proportions of errors displayed in the second graphic. The second graphic shows the sequence view annotated by issues in geometry and electron density. Residues are color-coded according to the number of geometric quality criteria for which they contain at least one outlier: green = 0, yellow = 1, orange = 2 and red = 3 or more. A red dot above a residue indicates a poor fit to the electron density ($RSRZ > 2$). Stretches of 2 or more consecutive residues without any outlier are shown as a green connector. Residues present in the sample, but not in the model, are shown in grey.

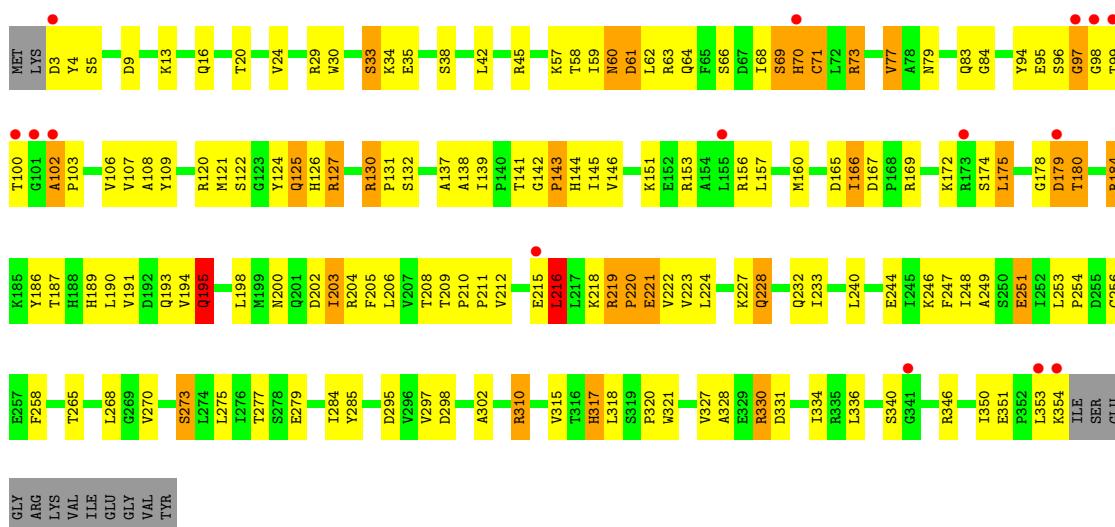
• Molecule 1: Ehpf

Chain A: 



• Molecule 1: Ehpf

Chain B: 



4 Data and refinement statistics

Property	Value	Source
Space group	I 2 3	Depositor
Cell constants a, b, c, α , β , γ	193.13Å 193.13Å 193.13Å 90.00° 90.00° 90.00°	Depositor
Resolution (Å)	26.78 – 2.80 26.78 – 2.80	Depositor EDS
% Data completeness (in resolution range)	99.9 (26.78-2.80) 99.9 (26.78-2.80)	Depositor EDS
R_{merge}	0.10	Depositor
R_{sym}	(Not available)	Depositor
$\langle I/\sigma(I) \rangle$ ¹	3.14 (at 2.80Å)	Xtriage
Refinement program	REFMAC 5.2.0019	Depositor
R, R_{free}	0.212 , 0.288 0.214 , 0.288	Depositor DCC
R_{free} test set	1495 reflections (5.36%)	DCC
Wilson B-factor (Å ²)	66.7	Xtriage
Anisotropy	0.000	Xtriage
Bulk solvent k_{sol} (e/Å ³), B_{sol} (Å ²)	0.33 , 9.0	EDS
Estimated twinning fraction	0.000 for -l,-k,-h	Xtriage
L-test for twinning	$\langle L \rangle = 0.54$, $\langle L^2 \rangle = 0.38$	Xtriage
Outliers	0 of 29383 reflections	Xtriage
F_o, F_c correlation	0.93	EDS
Total number of atoms	5594	wwPDB-VP
Average B, all atoms (Å ²)	36.0	wwPDB-VP

Xtriage's analysis on translational NCS is as follows: *The largest off-origin peak in the Patterson function is 2.07% of the height of the origin peak. No significant pseudotranslation is detected.*

¹Intensities estimated from amplitudes.

5 Model quality ⓘ

5.1 Standard geometry ⓘ

Bond lengths and bond angles in the following residue types are not validated in this section: PXC

The Z score for a bond length (or angle) is the number of standard deviations the observed value is removed from the expected value. A bond length (or angle) with $|Z| > 5$ is considered an outlier worth inspection. RMSZ is the root-mean-square of all Z scores of the bond lengths (or angles).

Mol	Chain	Bond lengths		Bond angles	
		RMSZ	# Z >5	RMSZ	# Z >5
1	A	1.34	9/2834 (0.3%)	1.32	23/3857 (0.6%)
1	B	1.31	10/2834 (0.4%)	1.26	11/3857 (0.3%)
All	All	1.33	19/5668 (0.3%)	1.29	34/7714 (0.4%)

Chiral center outliers are detected by calculating the chiral volume of a chiral center and verifying if the center is modelled as a planar moiety or with the opposite hand. A planarity outlier is detected by checking planarity of atoms in a peptide group, atoms in a mainchain group or atoms of a sidechain that are expected to be planar.

Mol	Chain	#Chirality outliers	#Planarity outliers
1	A	0	7
1	B	0	2
All	All	0	9

All (19) bond length outliers are listed below:

Mol	Chain	Res	Type	Atoms	Z	Observed(Å)	Ideal(Å)
1	B	3	ASP	N-CA	6.99	1.60	1.46
1	B	354	LYS	C-O	6.08	1.34	1.23
1	A	122	SER	C-O	6.05	1.34	1.23
1	B	219	ARG	CZ-NH1	5.83	1.40	1.33
1	A	161	PHE	CD2-CE2	5.67	1.50	1.39
1	B	107	VAL	CB-CG2	-5.63	1.41	1.52
1	A	262	TYR	CD2-CE2	-5.55	1.31	1.39
1	B	35	GLU	CB-CG	-5.52	1.41	1.52
1	A	146	VAL	CB-CG2	5.48	1.64	1.52
1	B	106	VAL	CB-CG1	-5.47	1.41	1.52
1	A	215	GLU	CD-OE1	5.44	1.31	1.25
1	B	9	ASP	CB-CG	5.44	1.63	1.51
1	B	35	GLU	CD-OE1	5.43	1.31	1.25
1	B	4	TYR	CD2-CE2	5.36	1.47	1.39

Continued on next page...

Continued from previous page...

Mol	Chain	Res	Type	Atoms	Z	Observed(Å)	Ideal(Å)
1	A	41	TRP	CE3-CZ3	5.33	1.47	1.38
1	A	212	VAL	CB-CG1	-5.21	1.42	1.52
1	A	245	ILE	CA-CB	-5.17	1.43	1.54
1	A	342	PHE	CB-CG	5.10	1.60	1.51
1	B	143	PRO	N-CD	5.06	1.54	1.47

All (34) bond angle outliers are listed below:

Mol	Chain	Res	Type	Atoms	Z	Observed(°)	Ideal(°)
1	A	290	PRO	CA-N-CD	-10.58	96.69	111.50
1	A	120	ARG	NE-CZ-NH1	-8.25	116.18	120.30
1	B	143	PRO	CA-N-CD	-8.01	100.29	111.50
1	A	318	LEU	CB-CG-CD2	8.00	124.60	111.00
1	A	175	LEU	CA-CB-CG	7.80	133.25	115.30
1	A	156	ARG	NE-CZ-NH2	-7.65	116.48	120.30
1	B	142	GLY	C-N-CD	7.16	143.44	128.40
1	A	102	ALA	C-N-CD	-7.04	105.12	120.60
1	A	120	ARG	NE-CZ-NH2	7.00	123.80	120.30
1	A	215	GLU	OE1-CD-OE2	6.03	130.54	123.30
1	A	102	ALA	C-N-CA	5.96	147.03	122.00
1	A	118	SER	N-CA-CB	5.91	119.36	110.50
1	B	204	ARG	NE-CZ-NH1	5.82	123.21	120.30
1	B	96	SER	N-CA-C	-5.80	95.33	111.00
1	A	272	ARG	NE-CZ-NH2	-5.75	117.43	120.30
1	A	326	ARG	NE-CZ-NH1	-5.72	117.44	120.30
1	A	340	SER	N-CA-C	5.58	126.06	111.00
1	A	130	ARG	CG-CD-NE	5.50	123.35	111.80
1	B	206	LEU	CB-CG-CD2	-5.47	101.70	111.00
1	A	281	GLN	CB-CA-C	5.37	121.13	110.40
1	B	61	ASP	CB-CG-OD2	-5.35	113.49	118.30
1	A	19	ASP	CB-CG-OD2	-5.34	113.49	118.30
1	B	3	ASP	N-CA-C	5.32	125.37	111.00
1	A	165	ASP	CB-CG-OD1	-5.31	113.52	118.30
1	A	156	ARG	NE-CZ-NH1	5.26	122.93	120.30
1	A	272	ARG	CG-CD-NE	-5.26	100.74	111.80
1	A	230	LEU	CA-CB-CG	-5.24	103.26	115.30
1	B	298	ASP	CB-CG-OD2	5.21	122.99	118.30
1	B	35	GLU	OE1-CD-OE2	5.19	129.53	123.30
1	B	3	ASP	CB-CG-OD2	5.18	122.97	118.30
1	A	346	ARG	CB-CA-C	-5.15	100.10	110.40
1	B	216	LEU	CA-CB-CG	5.11	127.05	115.30
1	A	127	ARG	NE-CZ-NH1	-5.06	117.77	120.30

Continued on next page...

Continued from previous page...

Mol	Chain	Res	Type	Atoms	Z	Observed(°)	Ideal(°)
1	A	122	SER	C-N-CA	-5.04	111.71	122.30

There are no chirality outliers.

All (9) planarity outliers are listed below:

Mol	Chain	Res	Type	Group
1	A	100	THR	Peptide
1	A	102	ALA	Peptide
1	A	17	ILE	Peptide
1	A	19	ASP	Peptide
1	A	325	PRO	Peptide
1	A	339	VAL	Peptide
1	A	99	THR	Peptide
1	B	70	HIS	Peptide
1	B	97	GLY	Peptide

5.2 Close contacts ⓘ

In the following table, the Non-H and H(model) columns list the number of non-hydrogen atoms and hydrogen atoms in the chain respectively. The H(added) column lists the number of hydrogens added by MolProbity. The Clashes column lists the number of clashes within the asymmetric unit, and the number in parentheses is this value normalized per 1000 atoms of the molecule in the chain. The Symm-Clashes column gives symmetry related clashes, in the same way as for the Clashes column.

Mol	Chain	Non-H	H(model)	H(added)	Clashes	Symm-Clashes
1	A	2769	0	2737	141	0
1	B	2769	0	2737	119	0
2	A	20	0	6	2	0
2	B	20	0	6	3	0
3	A	9	0	0	0	0
3	B	7	0	0	0	0
All	All	5594	0	5486	250	0

Clashscore is defined as the number of clashes calculated for the entry per 1000 atoms (including hydrogens) of the entry. The overall clashscore for this entry is 23.

All (250) close contacts within the same asymmetric unit are listed below.

Atom-1	Atom-2	Distance(Å)	Clash(Å)
1:B:184:ARG:HH11	1:B:184:ARG:HG3	1.13	1.12
1:B:130:ARG:HG2	1:B:130:ARG:HH11	1.09	1.12

Continued on next page...

Continued from previous page...

Atom-1	Atom-2	Distance(Å)	Clash(Å)
1:A:4:TYR:O	1:A:8:ILE:HD12	1.57	1.05
1:B:73:ARG:HH12	1:B:102:ALA:HB1	1.15	1.05
1:B:73:ARG:NH1	1:B:102:ALA:HB1	1.70	1.04
1:A:16:GLN:N	1:A:16:GLN:HE21	1.55	1.04
1:B:102:ALA:HB3	1:B:103:PRO:HA	1.41	1.03
1:B:191:VAL:HG13	1:B:216:LEU:HD23	1.36	1.02
1:B:228:GLN:HE21	1:B:228:GLN:HA	1.22	1.02
1:A:193:GLN:HE21	1:B:169:ARG:HH11	1.07	0.97
1:B:228:GLN:NE2	1:B:228:GLN:HA	1.80	0.96
1:A:193:GLN:HE21	1:B:169:ARG:NH1	1.64	0.96
1:B:228:GLN:HE21	1:B:228:GLN:CA	1.77	0.95
1:A:341:GLY:HA3	1:A:342:PHE:HB2	1.49	0.93
1:A:340:SER:HA	1:A:341:GLY:O	1.69	0.92
1:A:169:ARG:NH1	1:B:193:GLN:HE21	1.66	0.92
1:B:130:ARG:HG2	1:B:130:ARG:NH1	1.79	0.91
1:A:169:ARG:HH11	1:B:193:GLN:HE21	0.97	0.91
1:A:74:GLN:HA	1:A:74:GLN:HE21	1.34	0.91
1:B:191:VAL:HG13	1:B:216:LEU:CD2	2.01	0.89
1:B:195:GLN:HG3	1:B:219:ARG:HH11	1.38	0.88
1:B:102:ALA:CB	1:B:103:PRO:HA	2.02	0.88
1:B:130:ARG:CG	1:B:130:ARG:HH11	1.89	0.85
1:A:73:ARG:HH11	1:A:73:ARG:HG3	1.41	0.85
1:A:341:GLY:HA3	1:A:342:PHE:CB	2.04	0.85
1:A:341:GLY:CA	1:A:342:PHE:HB2	2.08	0.83
1:A:241:ASN:C	1:A:241:ASN:OD1	2.16	0.83
1:A:16:GLN:HE21	1:A:16:GLN:H	1.23	0.82
1:A:16:GLN:C	1:A:18:ASN:H	1.83	0.81
1:B:153:ARG:HH21	2:B:400:PXC:HAJ	1.45	0.81
1:B:253:LEU:HD12	1:B:253:LEU:O	1.81	0.80
1:B:73:ARG:HH12	1:B:102:ALA:CB	1.92	0.80
1:A:193:GLN:NE2	1:B:169:ARG:HH11	1.79	0.80
1:A:169:ARG:HH11	1:B:193:GLN:NE2	1.79	0.79
1:B:143:PRO:HD2	1:B:144:HIS:CD2	2.16	0.79
1:B:68:ILE:O	1:B:71:CYS:HB3	1.82	0.79
1:A:226:MET:HG2	1:A:230:LEU:HD12	1.65	0.77
1:A:16:GLN:NE2	1:A:16:GLN:H	1.83	0.77
1:B:124:TYR:HA	1:B:127:ARG:HG2	1.66	0.75
1:B:102:ALA:HB3	1:B:103:PRO:CA	2.16	0.75
1:A:130:ARG:HG2	1:A:130:ARG:HH11	1.50	0.74
1:A:241:ASN:OD1	1:A:241:ASN:O	2.06	0.74
1:A:193:GLN:NE2	1:B:169:ARG:NH1	2.35	0.74
1:B:95:GLU:HG3	1:B:143:PRO:HB2	1.71	0.73

Continued on next page...

Continued from previous page...

Atom-1	Atom-2	Distance(Å)	Clash(Å)
1:B:184:ARG:CG	1:B:184:ARG:HH11	1.95	0.72
1:A:63:ARG:NH2	1:A:302:ALA:O	2.23	0.72
1:A:56:VAL:HG12	1:A:56:VAL:O	1.87	0.71
1:B:228:GLN:HE21	1:B:228:GLN:C	1.92	0.71
1:B:195:GLN:HG3	1:B:219:ARG:NH1	2.05	0.70
1:A:68:ILE:HG12	1:A:68:ILE:O	1.91	0.70
1:A:290:PRO:HD2	1:A:291:PHE:H	1.57	0.70
1:B:184:ARG:NH1	1:B:184:ARG:HG3	1.94	0.69
1:A:298:ASP:OD2	1:A:301:THR:HG23	1.93	0.68
1:A:49:ASN:C	1:A:49:ASN:HD22	1.98	0.67
1:B:131:PRO:O	1:B:132:SER:HB3	1.93	0.67
1:A:191:VAL:HG13	1:A:216:LEU:HD23	1.78	0.66
1:A:226:MET:HG2	1:A:230:LEU:CD1	2.25	0.66
1:A:290:PRO:HD2	1:A:291:PHE:N	2.11	0.66
1:A:266:SER:OG	1:A:327:VAL:HG21	1.96	0.65
1:A:267:ALA:HB1	1:A:317:HIS:HB2	1.78	0.65
1:A:16:GLN:C	1:A:18:ASN:N	2.50	0.64
1:B:121:MET:HE1	1:B:156:ARG:HD2	1.78	0.64
1:B:102:ALA:CB	1:B:103:PRO:CA	2.72	0.64
1:A:153:ARG:NH2	2:A:400:PXC:HAJ	2.12	0.64
1:A:180:THR:HG23	1:A:181:ALA:N	2.11	0.64
1:A:317:HIS:NE2	1:A:319:SER:HB3	2.13	0.63
1:B:63:ARG:NH1	1:B:295:ASP:OD2	2.31	0.63
1:B:130:ARG:NH1	1:B:131:PRO:O	2.31	0.63
1:B:221:GLU:H	1:B:221:GLU:CD	2.01	0.63
1:B:124:TYR:O	1:B:130:ARG:HD3	1.98	0.63
1:A:273:SER:HA	1:A:284:ILE:O	1.99	0.63
1:B:297:VAL:HG13	1:B:302:ALA:HA	1.81	0.62
1:B:336:LEU:HB2	1:B:346:ARG:HB3	1.81	0.61
1:B:210:PRO:HD2	1:B:211:PRO:HD3	1.81	0.61
1:A:16:GLN:N	1:A:16:GLN:NE2	2.35	0.61
1:A:74:GLN:HA	1:A:74:GLN:NE2	2.11	0.61
1:A:191:VAL:HG21	1:A:215:GLU:HG3	1.83	0.61
1:B:228:GLN:NE2	1:B:228:GLN:O	2.34	0.60
1:B:178:GLY:O	1:B:180:THR:HG22	2.01	0.60
1:A:189:HIS:O	1:A:193:GLN:HG3	2.01	0.60
1:A:20:THR:OG1	1:A:21:ASN:N	2.34	0.60
1:B:244:GLU:O	1:B:248:ILE:HG13	2.01	0.60
1:B:240:LEU:CD1	1:B:285:TYR:OH	2.50	0.59
1:A:18:ASN:OD1	1:A:342:PHE:HD2	1.85	0.59
1:A:16:GLN:O	1:A:18:ASN:N	2.36	0.58
1:A:191:VAL:HG12	1:A:219:ARG:NH1	2.17	0.58

Continued on next page...

Continued from previous page...

Atom-1	Atom-2	Distance(Å)	Clash(Å)
1:A:153:ARG:HH22	1:A:232:GLN:NE2	2.02	0.58
1:B:208:THR:HG23	1:B:209:THR:N	2.18	0.57
1:A:4:TYR:C	1:A:8:ILE:HD12	2.21	0.57
1:B:198:LEU:HD22	1:B:203:ILE:HD11	1.87	0.57
1:A:191:VAL:HG21	1:A:215:GLU:CG	2.35	0.57
1:A:175:LEU:HB3	1:A:183:VAL:HG21	1.87	0.57
1:A:227:LYS:HE2	1:A:252:ILE:O	2.06	0.56
1:A:180:THR:CG2	1:A:181:ALA:N	2.68	0.56
1:B:317:HIS:C	1:B:317:HIS:CD2	2.80	0.56
1:B:58:THR:O	1:B:61:ASP:HB2	2.05	0.56
1:B:167:ASP:OD1	1:B:167:ASP:C	2.43	0.56
1:A:300:ILE:HG22	1:A:301:THR:CG2	2.36	0.55
1:A:247:PHE:C	1:A:247:PHE:CD2	2.79	0.55
1:B:205:PHE:HD1	1:B:232:GLN:HB3	1.70	0.55
1:A:49:ASN:ND2	1:A:49:ASN:C	2.59	0.55
1:A:335:ARG:O	1:A:336:LEU:HD23	2.07	0.55
1:A:277:THR:O	1:A:280:SER:HB2	2.06	0.55
1:A:172:LYS:HE3	1:A:172:LYS:HA	1.89	0.55
1:B:220:PRO:O	1:B:224:LEU:HG	2.06	0.55
1:A:173:ARG:O	1:A:177:GLU:HB2	2.07	0.54
1:A:50:PHE:HB2	1:A:55:ASP:OD2	2.08	0.54
1:B:45:ARG:HD2	1:B:45:ARG:O	2.06	0.54
1:A:284:ILE:HG23	1:A:346:ARG:HD3	1.90	0.54
1:A:172:LYS:C	1:A:174:SER:H	2.10	0.54
1:A:68:ILE:CG1	1:A:68:ILE:O	2.54	0.54
1:A:354:LYS:C	1:A:354:LYS:HD3	2.28	0.54
1:A:73:ARG:HG2	1:A:104:LYS:HG2	1.89	0.53
1:B:94:TYR:CE2	1:B:108:ALA:HB3	2.42	0.53
1:A:164:ILE:CD1	1:A:166:ILE:HB	2.38	0.53
1:A:342:PHE:O	1:A:343:ALA:HB2	2.08	0.53
1:B:29:ARG:O	1:B:33:SER:HB3	2.08	0.53
1:B:249:ALA:O	1:B:254:PRO:HA	2.08	0.53
1:A:319:SER:OG	1:A:321:TRP:HE3	1.92	0.53
1:A:27:LEU:HB3	1:A:318:LEU:CD2	2.38	0.53
1:B:219:ARG:O	1:B:223:VAL:HG23	2.10	0.52
1:A:49:ASN:HD22	1:A:50:PHE:HD2	1.56	0.52
1:B:184:ARG:O	1:B:184:ARG:HD2	2.09	0.52
1:A:28:MET:CE	1:A:56:VAL:HG11	2.39	0.52
1:A:41:TRP:CZ2	1:A:68:ILE:HD12	2.45	0.52
1:A:152:GLU:OE2	1:A:156:ARG:NH1	2.40	0.52
1:B:330:ARG:C	1:B:353:LEU:HD13	2.30	0.52
1:B:198:LEU:CD2	1:B:203:ILE:HD11	2.40	0.51

Continued on next page...

Continued from previous page...

Atom-1	Atom-2	Distance(Å)	Clash(Å)
1:A:98:GLY:HA2	1:A:102:ALA:HA	1.91	0.51
1:A:17:ILE:HG13	1:A:17:ILE:O	2.10	0.51
1:B:24:VAL:HG21	1:B:59:ILE:HD13	1.94	0.50
1:B:69:SER:O	1:B:71:CYS:N	2.45	0.50
1:A:19:ASP:O	1:A:20:THR:C	2.49	0.50
1:A:146:VAL:O	1:A:147:GLY:C	2.49	0.50
1:A:73:ARG:NH1	1:A:73:ARG:HG3	2.17	0.50
1:A:336:LEU:HB2	1:A:346:ARG:HB2	1.94	0.50
1:A:210:PRO:O	1:A:214:ARG:HB2	2.11	0.50
1:B:178:GLY:C	1:B:180:THR:H	2.15	0.50
1:A:130:ARG:HG3	1:A:131:PRO:HD2	1.95	0.49
1:A:5:SER:HA	1:A:8:ILE:HD13	1.93	0.49
1:A:51:ASP:OD1	1:A:54:LYS:HB2	2.12	0.49
1:A:264:SER:HA	1:A:329:GLU:OE2	2.11	0.49
1:A:301:THR:OG1	1:A:303:GLN:HB2	2.11	0.49
1:B:285:TYR:CE1	1:B:350:ILE:HD12	2.47	0.49
1:B:145:ILE:HG23	1:B:146:VAL:N	2.27	0.49
1:B:30:TRP:CH2	1:B:84:GLY:HA3	2.48	0.49
1:A:28:MET:HE2	1:A:56:VAL:HG11	1.95	0.48
1:B:94:TYR:HE2	1:B:108:ALA:HB3	1.78	0.48
1:A:311:GLY:O	1:A:332:THR:HA	2.13	0.48
1:B:68:ILE:O	1:B:71:CYS:CB	2.59	0.48
1:A:300:ILE:HG22	1:A:301:THR:HG23	1.95	0.48
1:A:300:ILE:HD13	1:A:300:ILE:HA	1.65	0.48
1:B:273:SER:HA	1:B:284:ILE:O	2.14	0.48
1:B:121:MET:CE	1:B:156:ARG:HD2	2.42	0.47
1:B:137:ALA:O	1:B:139:ILE:N	2.43	0.47
1:A:130:ARG:NH1	1:A:131:PRO:O	2.47	0.47
1:B:221:GLU:N	1:B:221:GLU:CD	2.68	0.47
1:B:194:VAL:O	1:B:198:LEU:HG	2.15	0.47
1:A:172:LYS:C	1:A:174:SER:N	2.66	0.47
1:B:127:ARG:NH1	2:B:400:PXC:OAB	2.48	0.47
1:B:130:ARG:HG3	1:B:131:PRO:HD2	1.96	0.47
1:B:73:ARG:NH1	1:B:102:ALA:CB	2.59	0.47
1:A:267:ALA:CB	1:A:317:HIS:HB2	2.43	0.47
1:B:240:LEU:HD12	1:B:285:TYR:OH	2.14	0.47
1:B:99:THR:HG22	1:B:172:LYS:NZ	2.30	0.47
1:A:28:MET:HG2	1:A:52:PRO:O	2.15	0.47
1:A:180:THR:CG2	1:A:181:ALA:H	2.28	0.47
1:A:74:GLN:NE2	1:B:200:ASN:HD22	2.13	0.46
1:B:233:ILE:HG13	1:B:256:CYS:SG	2.56	0.46
1:A:320:PRO:HD2	1:A:321:TRP:CZ3	2.50	0.46

Continued on next page...

Continued from previous page...

Atom-1	Atom-2	Distance(Å)	Clash(Å)
1:B:70:HIS:ND1	1:B:73:ARG:NH2	2.52	0.46
1:B:70:HIS:O	1:B:71:CYS:HB2	2.15	0.46
1:B:109:TYR:CD1	1:B:321:TRP:HB3	2.51	0.46
1:A:120:ARG:HA	1:A:272:ARG:HH11	1.80	0.46
1:B:174:SER:O	1:B:175:LEU:C	2.54	0.46
1:B:97:GLY:C	1:B:99:THR:N	2.69	0.46
1:A:169:ARG:HD2	1:B:165:ASP:OD2	2.16	0.46
1:A:51:ASP:HA	1:A:52:PRO:HD3	1.77	0.46
1:A:164:ILE:HD12	1:A:166:ILE:HB	1.98	0.45
1:B:253:LEU:CD1	1:B:256:CYS:HB3	2.47	0.45
1:B:38:SER:HB2	1:B:79:ASN:O	2.17	0.45
1:A:300:ILE:HG22	1:A:301:THR:HG22	1.99	0.45
1:A:313:VAL:O	1:A:314:ILE:HD12	2.17	0.45
1:A:191:VAL:HG12	1:A:219:ARG:CZ	2.47	0.45
1:A:153:ARG:HH21	2:A:400:PXC:HAJ	1.81	0.45
1:A:27:LEU:HB3	1:A:318:LEU:HD22	1.98	0.45
1:A:69:SER:O	1:A:70:HIS:C	2.56	0.45
1:A:28:MET:HE1	1:A:62:LEU:CD2	2.47	0.44
1:A:316:THR:HG23	1:A:325:PRO:HA	1.98	0.44
1:B:232:GLN:HG3	2:B:400:PXC:CAJ	2.47	0.44
1:A:124:TYR:O	1:A:130:ARG:HD3	2.18	0.44
1:B:186:TYR:O	1:B:189:HIS:HB3	2.18	0.44
1:B:216:LEU:HD13	1:B:222:VAL:HG11	1.99	0.44
1:A:346:ARG:O	1:A:347:LEU:HD23	2.18	0.44
1:A:54:LYS:O	1:A:57:LYS:HE3	2.17	0.44
1:A:49:ASN:ND2	1:A:50:PHE:HD2	2.16	0.44
1:A:4:TYR:C	1:A:8:ILE:CD1	2.86	0.44
1:B:320:PRO:HD2	1:B:321:TRP:CZ3	2.53	0.44
1:A:230:LEU:HD23	1:A:230:LEU:HA	1.72	0.44
1:A:172:LYS:O	1:A:174:SER:N	2.51	0.44
1:A:54:LYS:HD3	1:A:54:LYS:HA	1.81	0.44
1:A:74:GLN:CA	1:A:74:GLN:HE21	2.15	0.43
1:A:89:SER:O	1:A:90:HIS:HB2	2.18	0.43
1:A:74:GLN:NE2	1:B:200:ASN:ND2	2.65	0.43
1:B:125:GLN:HG3	1:B:126:HIS:CE1	2.53	0.43
1:B:327:VAL:HG23	1:B:327:VAL:H	1.51	0.43
1:B:247:PHE:CE1	1:B:251:GLU:HG2	2.52	0.43
1:B:187:THR:HG22	1:B:215:GLU:OE1	2.18	0.43
1:B:157:LEU:HA	1:B:157:LEU:HD23	1.76	0.43
1:B:203:ILE:H	1:B:203:ILE:HD13	1.83	0.43
1:B:212:VAL:O	1:B:216:LEU:HB2	2.18	0.43
1:B:120:ARG:HG3	1:B:120:ARG:O	2.18	0.43

Continued on next page...

Continued from previous page...

Atom-1	Atom-2	Distance(Å)	Clash(Å)
1:B:83:GLN:HG3	1:B:83:GLN:H	1.50	0.43
1:B:270:VAL:O	1:B:270:VAL:HG23	2.19	0.43
1:A:249:ALA:O	1:A:254:PRO:HA	2.18	0.43
1:B:315:VAL:HG13	1:B:315:VAL:O	2.19	0.43
1:B:60:ASN:O	1:B:63:ARG:HG3	2.18	0.42
1:A:130:ARG:HA	1:A:131:PRO:HD3	1.81	0.42
1:A:191:VAL:HG21	1:A:215:GLU:HB3	2.01	0.42
1:A:73:ARG:HH11	1:A:73:ARG:CG	2.22	0.42
1:B:59:ILE:HA	1:B:59:ILE:HD13	1.73	0.42
1:A:195:GLN:O	1:A:199:MET:HG2	2.19	0.42
1:B:190:LEU:O	1:B:191:VAL:C	2.57	0.42
1:A:82:PRO:HD2	1:A:85:LEU:HD11	2.01	0.42
1:B:208:THR:OG1	1:B:209:THR:N	2.52	0.42
1:A:27:LEU:CB	1:A:318:LEU:HD22	2.50	0.42
1:A:67:ASP:HB2	1:A:326:ARG:O	2.19	0.42
1:B:268:LEU:HD12	1:B:317:HIS:CE1	2.55	0.42
1:A:290:PRO:CD	1:A:291:PHE:H	2.29	0.42
1:A:171:VAL:O	1:A:175:LEU:HD13	2.20	0.42
1:B:145:ILE:CG2	1:B:146:VAL:N	2.82	0.41
1:B:253:LEU:HD11	1:B:258:PHE:CZ	2.54	0.41
1:A:55:ASP:N	1:A:55:ASP:OD1	2.53	0.41
1:A:290:PRO:CD	1:A:291:PHE:N	2.78	0.41
1:B:218:LYS:O	1:B:220:PRO:HD2	2.20	0.41
1:B:310:ARG:HA	1:B:334:ILE:HA	2.01	0.41
1:A:7:GLU:O	1:A:10:ALA:HB3	2.19	0.41
1:A:124:TYR:O	1:A:125:GLN:C	2.59	0.41
1:A:320:PRO:HD2	1:A:321:TRP:CE3	2.56	0.41
1:A:247:PHE:C	1:A:247:PHE:HD2	2.23	0.41
1:A:121:MET:HA	1:A:124:TYR:CZ	2.56	0.41
1:B:121:MET:HE1	1:B:156:ARG:CB	2.51	0.41
1:A:29:ARG:O	1:A:33:SER:HB2	2.20	0.41
1:A:58:THR:O	1:A:61:ASP:HB2	2.20	0.41
1:A:100:THR:HG22	1:A:101:GLY:H	1.85	0.41
1:B:62:LEU:C	1:B:64:GLN:N	2.74	0.41
1:A:49:ASN:O	1:A:49:ASN:ND2	2.54	0.41
1:B:219:ARG:HA	1:B:220:PRO:HD2	1.85	0.40
1:B:331:ASP:N	1:B:353:LEU:HD13	2.36	0.40
1:A:191:VAL:HG21	1:A:215:GLU:CB	2.51	0.40

There are no symmetry-related clashes.

5.3 Torsion angles

5.3.1 Protein backbone ⓘ

In the following table, the Percentiles column shows the percent Ramachandran outliers of the chain as a percentile score with respect to all X-ray entries followed by that with respect to entries of similar resolution. The Analysed column shows the number of residues for which the backbone conformation was analysed, and the total number of residues.

Mol	Chain	Analysed	Favoured	Allowed	Outliers	Percentiles	
1	A	350/366 (96%)	297 (85%)	43 (12%)	10 (3%)	7	23
1	B	350/366 (96%)	299 (85%)	37 (11%)	14 (4%)	5	14
All	All	700/732 (96%)	596 (85%)	80 (11%)	24 (3%)	6	19

All (24) Ramachandran outliers are listed below:

Mol	Chain	Res	Type
1	A	17	ILE
1	A	20	THR
1	A	34	LYS
1	A	56	VAL
1	A	340	SER
1	B	98	GLY
1	B	102	ALA
1	B	125	GLN
1	B	138	ALA
1	B	179	ASP
1	A	97	GLY
1	B	71	CYS
1	B	100	THR
1	B	166	ILE
1	B	180	THR
1	A	18	ASN
1	A	103	PRO
1	B	69	SER
1	B	328	ALA
1	B	77	VAL
1	B	195	GLN
1	B	220	PRO
1	A	35	GLU
1	A	341	GLY

5.3.2 Protein sidechains ⓘ

In the following table, the Percentiles column shows the percent sidechain outliers of the chain as a percentile score with respect to all X-ray entries followed by that with respect to entries of similar resolution. The Analysed column shows the number of residues for which the sidechain conformation was analysed, and the total number of residues.

Mol	Chain	Analysed	Rotameric	Outliers	Percentiles	
1	A	304/316 (96%)	259 (85%)	45 (15%)	4	13
1	B	304/316 (96%)	262 (86%)	42 (14%)	5	15
All	All	608/632 (96%)	521 (86%)	87 (14%)	5	14

All (87) residues with a non-rotameric sidechain are listed below:

Mol	Chain	Res	Type
1	A	7	GLU
1	A	16	GLN
1	A	17	ILE
1	A	18	ASN
1	A	20	THR
1	A	34	LYS
1	A	38	SER
1	A	42	LEU
1	A	49	ASN
1	A	54	LYS
1	A	55	ASP
1	A	57	LYS
1	A	59	ILE
1	A	68	ILE
1	A	70	HIS
1	A	73	ARG
1	A	74	GLN
1	A	83	GLN
1	A	99	THR
1	A	100	THR
1	A	118	SER
1	A	130	ARG
1	A	145	ILE
1	A	151	LYS
1	A	170	TRP
1	A	172	LYS
1	A	175	LEU
1	A	189	HIS
1	A	215	GLU

Continued on next page...

Continued from previous page...

Mol	Chain	Res	Type
1	A	220	PRO
1	A	228	GLN
1	A	240	LEU
1	A	241	ASN
1	A	272	ARG
1	A	275	LEU
1	A	280	SER
1	A	300	ILE
1	A	305	VAL
1	A	306	GLU
1	A	309	GLU
1	A	318	LEU
1	A	319	SER
1	A	339	VAL
1	A	350	ILE
1	A	354	LYS
1	B	5	SER
1	B	13	LYS
1	B	16	GLN
1	B	20	THR
1	B	33	SER
1	B	34	LYS
1	B	42	LEU
1	B	57	LYS
1	B	60	ASN
1	B	66	SER
1	B	73	ARG
1	B	77	VAL
1	B	122	SER
1	B	127	ARG
1	B	130	ARG
1	B	141	THR
1	B	151	LYS
1	B	160	MET
1	B	166	ILE
1	B	175	LEU
1	B	179	ASP
1	B	184	ARG
1	B	195	GLN
1	B	202	ASP
1	B	203	ILE
1	B	216	LEU

Continued on next page...

Continued from previous page...

Mol	Chain	Res	Type
1	B	221	GLU
1	B	227	LYS
1	B	228	GLN
1	B	246	LYS
1	B	251	GLU
1	B	265	THR
1	B	273	SER
1	B	275	LEU
1	B	277	THR
1	B	279	GLU
1	B	310	ARG
1	B	317	HIS
1	B	318	LEU
1	B	330	ARG
1	B	340	SER
1	B	351	GLU

Some sidechains can be flipped to improve hydrogen bonding and reduce clashes. All (19) such sidechains are listed below:

Mol	Chain	Res	Type
1	A	16	GLN
1	A	49	ASN
1	A	74	GLN
1	A	79	ASN
1	A	83	GLN
1	A	92	GLN
1	A	193	GLN
1	A	232	GLN
1	A	281	GLN
1	B	16	GLN
1	B	18	ASN
1	B	25	GLN
1	B	74	GLN
1	B	79	ASN
1	B	150	ASN
1	B	193	GLN
1	B	195	GLN
1	B	200	ASN
1	B	228	GLN

5.3.3 RNA ⓘ

There are no RNA chains in this entry.

5.4 Non-standard residues in protein, DNA, RNA chains ⓘ

There are no non-standard protein/DNA/RNA residues in this entry.

5.5 Carbohydrates ⓘ

There are no carbohydrates in this entry.

5.6 Ligand geometry ⓘ

2 ligands are modelled in this entry.

In the following table, the Counts columns list the number of bonds (or angles) for which Mogul statistics could be retrieved, the number of bonds (or angles) that are observed in the model and the number of bonds (or angles) that are defined in the chemical component dictionary. The Link column lists molecule types, if any, to which the group is linked. The Z score for a bond length (or angle) is the number of standard deviations the observed value is removed from the expected value. A bond length (or angle) with $|Z| > 2$ is considered an outlier worth inspection. RMSZ is the root-mean-square of all Z scores of the bond lengths (or angles).

Mol	Type	Chain	Res	Link	Bond lengths			Bond angles		
					Counts	RMSZ	# $ Z > 2$	Counts	RMSZ	# $ Z > 2$
2	PXC	A	400	-	22,22,22	1.45	6 (27%)	32,32,32	1.90	5 (15%)
2	PXC	B	400	-	22,22,22	1.47	6 (27%)	32,32,32	1.77	4 (12%)

In the following table, the Chirals column lists the number of chiral outliers, the number of chiral centers analysed, the number of these observed in the model and the number defined in the chemical component dictionary. Similar counts are reported in the Torsion and Rings columns. '-' means no outliers of that kind were identified.

Mol	Type	Chain	Res	Link	Chirals	Torsions	Rings
2	PXC	A	400	-	-	0/8/8/8	0/0/3/3
2	PXC	B	400	-	-	0/8/8/8	0/0/3/3

All (12) bond length outliers are listed below:

Mol	Chain	Res	Type	Atoms	Z	Observed(Å)	Ideal(Å)
2	B	400	PXC	CAO-CAM	2.67	1.55	1.50

Continued on next page...

Continued from previous page...

Mol	Chain	Res	Type	Atoms	Z	Observed(Å)	Ideal(Å)
2	B	400	PXC	CAO-CAS	-2.56	1.41	1.43
2	A	400	PXC	CAG-CAO	2.34	1.42	1.37
2	A	400	PXC	CAH-CAP	2.31	1.41	1.37
2	A	400	PXC	CAP-CAN	2.29	1.54	1.50
2	A	400	PXC	CAO-CAM	2.27	1.54	1.50
2	B	400	PXC	CAP-CAN	2.24	1.54	1.50
2	A	400	PXC	CAF-CAJ	2.19	1.41	1.36
2	A	400	PXC	CAO-CAS	-2.15	1.41	1.43
2	B	400	PXC	CAG-CAO	2.06	1.41	1.37
2	B	400	PXC	CAH-CAP	2.04	1.41	1.37
2	B	400	PXC	CAP-CAT	-2.00	1.41	1.43

All (9) bond angle outliers are listed below:

Mol	Chain	Res	Type	Atoms	Z	Observed(°)	Ideal(°)
2	A	400	PXC	CAS-NAK-CAR	4.47	122.57	117.29
2	A	400	PXC	CAT-NAL-CAQ	4.35	122.43	117.29
2	A	400	PXC	CAQ-CAS-NAK	-4.31	117.98	121.39
2	A	400	PXC	CAR-CAT-NAL	-4.27	118.01	121.39
2	B	400	PXC	CAQ-CAS-NAK	-4.20	118.07	121.39
2	B	400	PXC	CAT-NAL-CAQ	4.14	122.18	117.29
2	B	400	PXC	CAR-CAT-NAL	-4.06	118.18	121.39
2	B	400	PXC	CAS-NAK-CAR	4.03	122.05	117.29
2	A	400	PXC	CAS-CAQ-NAL	-2.07	119.45	121.35

There are no chirality outliers.

There are no torsion outliers.

There are no ring outliers.

5.7 Other polymers ⓘ

There are no such residues in this entry.

5.8 Polymer linkage issues

There are no chain breaks in this entry.

6 Fit of model and data ⓘ

6.1 Protein, DNA and RNA chains ⓘ

In the following table, the column labelled ‘#RSRZ > 2’ contains the number (and percentage) of RSRZ outliers, followed by percent RSRZ outliers for the chain as percentile scores relative to all X-ray entries and entries of similar resolution. The OWAB column contains the minimum, median, 95th percentile and maximum values of the occupancy-weighted average B-factor per residue. The column labelled ‘Q < 0.9’ lists the number of (and percentage) of residues with an average occupancy less than 0.9.

Mol	Chain	Analysed	<RSRZ>	#RSRZ>2	OWAB(Å ²)	Q<0.9
1	A	352/366 (96%)	-0.03	20 (5%) 23 23	14, 34, 59, 68	0
1	B	352/366 (96%)	-0.07	15 (4%) 34 34	15, 35, 56, 69	3 (0%)
All	All	704/732 (96%)	-0.05	35 (4%) 28 28	14, 34, 57, 69	3 (0%)

All (35) RSRZ outliers are listed below:

Mol	Chain	Res	Type	RSRZ
1	B	100	THR	4.6
1	A	342	PHE	4.6
1	B	99	THR	4.2
1	A	100	THR	3.9
1	B	98	GLY	3.8
1	B	354	LYS	3.4
1	B	3	ASP	3.2
1	A	180	THR	3.1
1	A	101	GLY	3.1
1	A	184	ARG	2.8
1	A	330	ARG	2.7
1	A	176	SER	2.7
1	A	178	GLY	2.6
1	A	36	THR	2.6
1	B	173	ARG	2.6
1	A	4	TYR	2.5
1	A	6	LEU	2.5
1	A	99	THR	2.4
1	A	13	LYS	2.4
1	B	101	GLY	2.4
1	A	98	GLY	2.3
1	A	88	ASP	2.3
1	A	29	ARG	2.3
1	B	215	GLU	2.3

Continued on next page...

Continued from previous page...

Mol	Chain	Res	Type	RSRZ
1	B	102	ALA	2.3
1	B	155	LEU	2.2
1	A	181	ALA	2.2
1	A	322	ALA	2.2
1	B	70	HIS	2.2
1	B	341	GLY	2.2
1	B	179	ASP	2.1
1	A	31	HIS	2.1
1	A	3	ASP	2.0
1	B	97	GLY	2.0
1	B	353	LEU	2.0

6.2 Non-standard residues in protein, DNA, RNA chains ⓘ

There are no non-standard protein/DNA/RNA residues in this entry.

6.3 Carbohydrates ⓘ

There are no carbohydrates in this entry.

6.4 Ligands ⓘ

In the following table, the Atoms column lists the number of modelled atoms in the group and the number defined in the chemical component dictionary. LLDF column lists the quality of electron density of the group with respect to its neighbouring residues in protein, DNA or RNA chains. The B-factors column lists the minimum, median, 95th percentile and maximum values of B factors of atoms in the group. The column labelled 'Q< 0.9' lists the number of atoms with occupancy less than 0.9.

Mol	Type	Chain	Res	Atoms	RSR	LLDF	B-factors(Å ²)	Q<0.9
2	PXC	A	400	20/20	0.21	0.93	44,46,51,55	0
2	PXC	B	400	20/20	0.21	0.27	67,68,71,73	0

6.5 Other polymers ⓘ

There are no such residues in this entry.