



Full wwPDB X-ray Structure Validation Report

Feb 27, 2014 – 12:27 AM GMT

PDB ID : 4LHT
Title : Crystal Structure of P450cin Y81F mutant, crystallized in 3 mM 1,8-cineole
Authors : Madrona, Y.; Poulos, T.L.
Deposited on : 2013-07-01
Resolution : 2.14 Å(reported)

This is a full wwPDB validation report for a publicly released PDB entry.
We welcome your comments at validation@mail.wwpdb.org
A user guide is available at <http://wwpdb.org/ValidationPDFNotes.html>

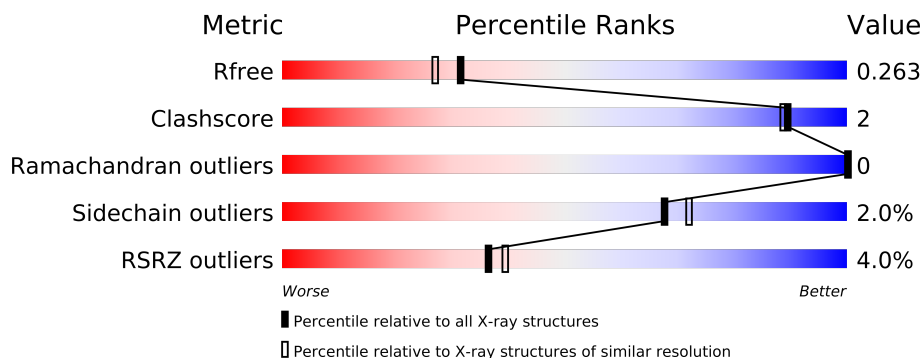
The following versions of software and data (see [references](#)) were used in the production of this report:

MolProbity : 4.02b-467
Mogul : 1.15 2013
Xtriage (Phenix) : dev-1323
EDS : stable22639
Percentile statistics : 21963
Refmac : 5.8.0049
CCP4 : 6.3.0 (Settle)
Ideal geometry (proteins) : Engh & Huber (2001)
Ideal geometry (DNA, RNA) : Parkinson et. al. (1996)
Validation Pipeline (wwPDB-VP) : stable22683

1 Overall quality at a glance

The reported resolution of this entry is 2.14 Å.

Percentile scores (ranging between 0-100) for global validation metrics of the entry are shown in the following graphic. The table shows the number of entries on which the scores are based.



Metric	Whole archive (#Entries)	Similar resolution (#Entries, resolution range(Å))
R_{free}	66092	1116 (2.16-2.12)
Clashscore	79885	1302 (2.16-2.12)
Ramachandran outliers	78287	1281 (2.16-2.12)
Sidechain outliers	78261	1281 (2.16-2.12)
RSRZ outliers	66119	1116 (2.16-2.12)

The table below summarises the geometric issues observed across the polymeric chains and their fit to the electron density. The red, orange, yellow and green segments on the lower bar indicate the fraction of residues that contain outliers for ≥ 3 , 2, 1 and 0 types of geometric quality criteria. The upper red bar (where present) indicates the fraction of residues that have poor fit to the electron density.

Mol	Chain	Length	Quality of chain
1	A	398	
1	B	398	

The following table lists non-polymeric compounds that are outliers for geometric or electron-density-fit criteria:

Mol	Type	Chain	Res	Geometry	Electron density
3	CNL	A	502	-	X
3	CNL	B	502	-	X
5	PGE	A	504	-	X
6	SO4	A	505	-	X

2 Entry composition i

There are 9 unique types of molecules in this entry. The entry contains 6857 atoms, of which 0 are hydrogen and 0 are deuterium.

In the tables below, the ZeroOcc column contains the number of atoms modelled with zero occupancy, the AltConf column contains the number of residues with at least one atom in alternate conformation and the Trace column contains the number of residues modelled with at most 2 atoms.

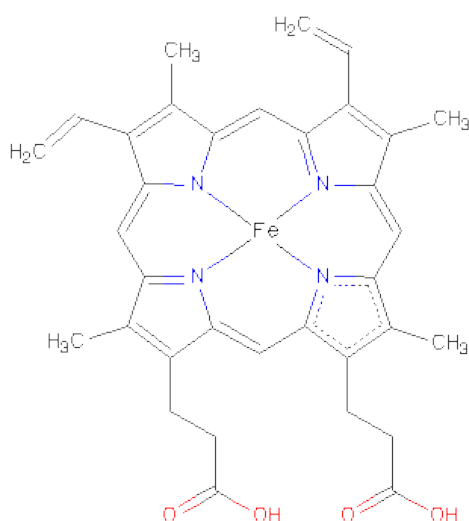
- Molecule 1 is a protein called P450cin.

Mol	Chain	Residues	Atoms					ZeroOcc	AltConf	Trace
1	A	396	Total	C	N	O	S	0	1	0
			3146	2007	551	577	11			
1	B	396	Total	C	N	O	S	0	1	0
			3144	2006	548	579	11			

There are 4 discrepancies between the modelled and reference sequences:

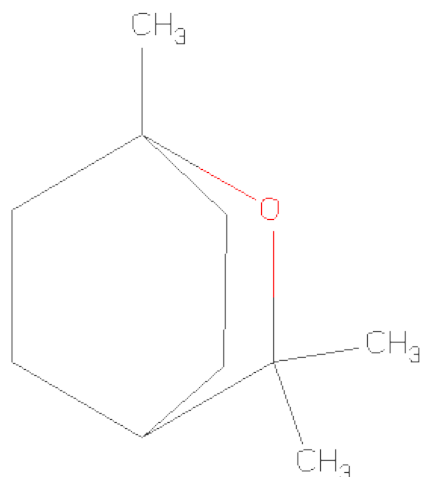
Chain	Residue	Modelled	Actual	Comment	Reference
A	7	MET	-	INITIATING METHIONINE	UNP Q8VQF6
A	81	PHE	TYR	ENGINEERED MUTATION	UNP Q8VQF6
B	7	MET	-	INITIATING METHIONINE	UNP Q8VQF6
B	81	PHE	TYR	ENGINEERED MUTATION	UNP Q8VQF6

- Molecule 2 is PROTOPORPHYRIN IX CONTAINING FE (three-letter code: HEM) (formula: $C_{34}H_{32}FeN_4O_4$).



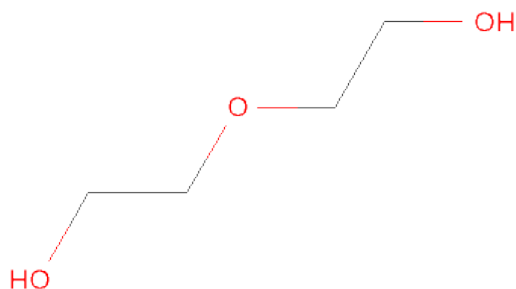
Mol	Chain	Residues	Atoms					ZeroOcc	AltConf
2	A	1	Total	C	Fe	N	O	0	0
			43	34	1	4	4		
2	B	1	Total	C	Fe	N	O	0	0
			43	34	1	4	4		

- Molecule 3 is 1,3,3-TRIMETHYL-2-OXABICYCLO[2.2.2]OCTANE (three-letter code: CNL) (formula: C₁₀H₁₈O).



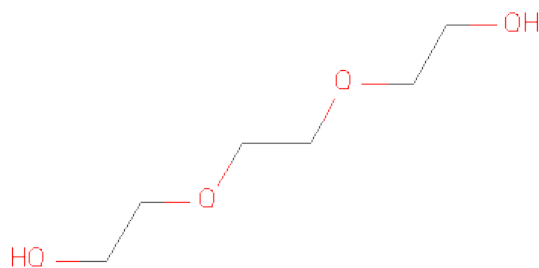
Mol	Chain	Residues	Atoms			ZeroOcc	AltConf
3	A	1	Total	C	O	0	0
			11	10	1		
3	B	1	Total	C	O	0	0
			11	10	1		

- Molecule 4 is DI(HYDROXYETHYL)ETHER (three-letter code: PEG) (formula: C₄H₁₀O₃).



Mol	Chain	Residues	Atoms			ZeroOcc	AltConf
4	A	1	Total	C	O	0	0
			7	4	3		

- Molecule 5 is TRIETHYLENE GLYCOL (three-letter code: PGE) (formula: $C_6H_{14}O_4$).



Mol	Chain	Residues	Atoms			ZeroOcc	AltConf
5	A	1	Total	C	O	0	0
			10	6	4		

- Molecule 6 is SULFATE ION (three-letter code: SO4) (formula: O_4S).

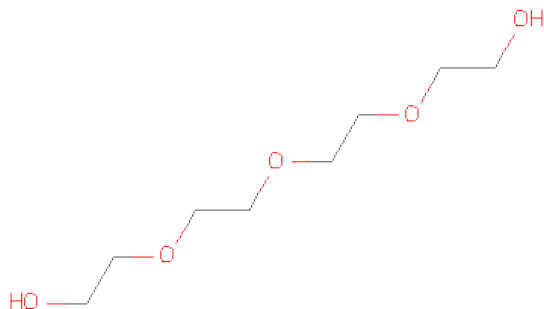


Mol	Chain	Residues	Atoms			ZeroOcc	AltConf
6	A	1	Total	O	S	0	0
			5	4	1		

- Molecule 7 is CHLORIDE ION (three-letter code: CL) (formula: Cl).

Mol	Chain	Residues	Atoms		ZeroOcc	AltConf
7	A	1	Total	Cl	0	0
			1	1		

- Molecule 8 is TETRAETHYLENE GLYCOL (three-letter code: PG4) (formula: C₈H₁₈O₅).



Mol	Chain	Residues	Atoms			ZeroOcc	AltConf
8	B	1	Total	C	O	0	0
			13	8	5		

- Molecule 9 is water.

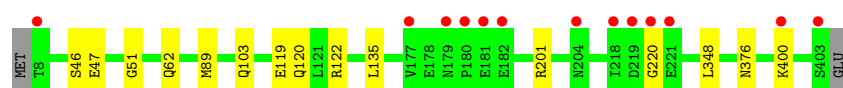
Mol	Chain	Residues	Atoms		ZeroOcc	AltConf
9	A	210	Total	O	0	0
			210	210		
9	B	213	Total	O	0	0
			213	213		

3 Residue-property plots

These plots are drawn for all protein, RNA and DNA chains in the entry. The first graphic for a chain summarises the proportions of errors displayed in the second graphic. The second graphic shows the sequence view annotated by issues in geometry and electron density. Residues are color-coded according to the number of geometric quality criteria for which they contain at least one outlier: green = 0, yellow = 1, orange = 2 and red = 3 or more. A red dot above a residue indicates a poor fit to the electron density ($RSRZ > 2$). Stretches of 2 or more consecutive residues without any outlier are shown as a green connector. Residues present in the sample, but not in the model, are shown in grey.

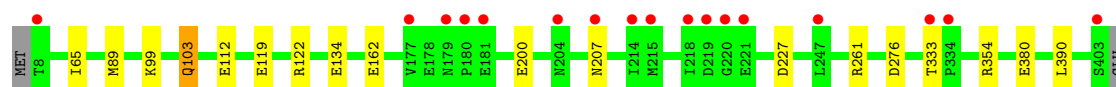
● Molecule 1: P450cin

Chain A: 



● Molecule 1: P450cin

Chain B: 



4 Data and refinement statistics

Property	Value	Source
Space group	P 21 21 21	Depositor
Cell constants a, b, c, α , β , γ	68.46Å 103.71Å 127.59Å 90.00° 90.00° 90.00°	Depositor
Resolution (Å)	32.88 – 2.14 34.69 – 2.14	Depositor EDS
% Data completeness (in resolution range)	98.2 (32.88-2.14) 98.2 (34.69-2.14)	Depositor EDS
R_{merge}	(Not available)	Depositor
R_{sym}	0.08	Depositor
$\langle I/\sigma(I) \rangle$ ¹	3.26 (at 2.14Å)	Xtriage
Refinement program	PHENIX (phenix.refine: 1.8.2_1309)	Depositor
R, R_{free}	0.209 , 0.263 0.209 , 0.263	Depositor DCC
R_{free} test set	2550 reflections (5.09%)	DCC
Wilson B-factor (Å ²)	22.9	Xtriage
Anisotropy	0.277	Xtriage
Bulk solvent k_{sol} (e/Å ³), B_{sol} (Å ²)	0.40 , 45.0	EDS
Estimated twinning fraction	No twinning to report.	Xtriage
L-test for twinning	$\langle L \rangle = 0.47$, $\langle L^2 \rangle = 0.31$	Xtriage
Outliers	2 of 50130 reflections (0.004%)	Xtriage
F_o, F_c correlation	0.92	EDS
Total number of atoms	6857	wwPDB-VP
Average B, all atoms (Å ²)	26.0	wwPDB-VP

Xtriage's analysis on translational NCS is as follows: *The analyses of the Patterson function reveals a significant off-origin peak that is 36.20 % of the origin peak, indicating pseudo translational symmetry. The chance of finding a peak of this or larger height randomly in a structure without pseudo translational symmetry is equal to 5.1815e-04. The detected translational NCS is most likely also responsible for the elevated intensity ratio.*

¹Intensities estimated from amplitudes.

5 Model quality

5.1 Standard geometry

Bond lengths and bond angles in the following residue types are not validated in this section: PGE, CL, PG4, SO4, HEM, CNL, PEG

The Z score for a bond length (or angle) is the number of standard deviations the observed value is removed from the expected value. A bond length (or angle) with $|Z| > 5$ is considered an outlier worth inspection. RMSZ is the root-mean-square of all Z scores of the bond lengths (or angles).

Mol	Chain	Bond lengths		Bond angles	
		RMSZ	# $ Z > 5$	RMSZ	# $ Z > 5$
1	A	0.57	0/3229	0.63	0/4390
1	B	0.59	0/3227	0.63	0/4388
All	All	0.58	0/6456	0.63	0/8778

There are no bond length outliers.

There are no bond angle outliers.

There are no chirality outliers.

There are no planarity outliers.

5.2 Close contacts

In the following table, the Non-H and H(model) columns list the number of non-hydrogen atoms and hydrogen atoms in the chain respectively. The H(added) column lists the number of hydrogens added by MolProbity. The Clashes column lists the number of clashes within the asymmetric unit, and the number in parentheses is this value normalized per 1000 atoms of the molecule in the chain. The Symm-Clashes column gives symmetry related clashes, in the same way as for the Clashes column.

Mol	Chain	Non-H	H(model)	H(added)	Clashes	Symm-Clashes
1	A	3146	0	339	7	0
1	B	3144	0	0	8	0
2	A	43	0	30	0	0
2	B	43	0	30	0	0
3	A	11	0	18	0	0
3	B	11	0	18	0	0
4	A	7	0	10	0	0
5	A	10	0	14	0	0
6	A	5	0	0	0	0
7	A	1	0	0	0	0

Continued on next page...

Continued from previous page...

Mol	Chain	Non-H	H(model)	H(added)	Clashes	Symm-Clashes
8	B	13	0	18	0	0
9	A	210	0	0	5	0
9	B	213	0	0	3	0
All	All	6857	0	477	15	0

Clashscore is defined as the number of clashes calculated for the entry per 1000 atoms (including hydrogens) of the entry. The overall clashscore for this entry is 2.

All (15) close contacts within the same asymmetric unit are listed below.

Atom-1	Atom-2	Distance(Å)	Clash(Å)
1:B:276:ASP:OD1	1:B:354:ARG:NH1	2.03	0.91
1:A:201:ARG:NH1	9:A:799:HOH:O	2.08	0.87
1:B:119:GLU:OE1	1:B:122:ARG:NH1	2.24	0.70
1:B:227:ASP:OD2	9:B:801:HOH:O	2.16	0.60
1:A:376:ASN:ND2	9:A:787:HOH:O	2.39	0.56
1:A:220:GLY:N	9:A:720:HOH:O	2.41	0.54
1:B:261:ARG:NH1	9:B:805:HOH:O	2.42	0.53
1:B:134:GLU:OE1	9:B:776:HOH:O	2.19	0.51
1:B:162:GLU:N	1:B:162:GLU:OE1	2.45	0.49
1:B:99:LYS:NZ	1:B:103:GLN:OE1	2.47	0.47
1:A:46:SER:O	1:A:51:GLY:HA2	2.16	0.46
1:A:103:GLN:OE1	9:A:790:HOH:O	2.20	0.46
1:A:62:GLN:NE2	9:A:726:HOH:O	2.48	0.46
1:B:380:GLU:O	1:B:390:LEU:N	2.50	0.44
1:A:119:GLU:OE2	1:A:122:ARG:NH2	2.54	0.41

There are no symmetry-related clashes.

5.3 Torsion angles

5.3.1 Protein backbone ⓘ

In the following table, the Percentiles column shows the percent Ramachandran outliers of the chain as a percentile score with respect to all X-ray entries followed by that with respect to entries of similar resolution. The Analysed column shows the number of residues for which the backbone conformation was analysed, and the total number of residues.

Mol	Chain	Analysed	Favoured	Allowed	Outliers	Percentiles	
1	A	395/398 (99%)	388 (98%)	7 (2%)	0	100	100
1	B	395/398 (99%)	388 (98%)	7 (2%)	0	100	100

Continued on next page...

Continued from previous page...

Mol	Chain	Analysed	Favoured	Allowed	Outliers	Percentiles	
All	All	790/796 (99%)	776 (98%)	14 (2%)	0	100	100

There are no Ramachandran outliers to report.

5.3.2 Protein sidechains ⓘ

In the following table, the Percentiles column shows the percent sidechain outliers of the chain as a percentile score with respect to all X-ray entries followed by that with respect to entries of similar resolution. The Analysed column shows the number of residues for which the sidechain conformation was analysed, and the total number of residues.

Mol	Chain	Analysed	Rotameric	Outliers	Percentiles	
1	A	333/334 (100%)	327 (98%)	6 (2%)	71	75
1	B	333/334 (100%)	326 (98%)	7 (2%)	66	70
All	All	666/668 (100%)	653 (98%)	13 (2%)	68	72

All (13) residues with a non-rotameric sidechain are listed below:

Mol	Chain	Res	Type
1	A	47	GLU
1	A	89	MET
1	A	120	GLN
1	A	135	LEU
1	A	348	LEU
1	A	400	LYS
1	B	65	ILE
1	B	89	MET
1	B	103	GLN
1	B	112	GLU
1	B	200	GLU
1	B	207	ASN
1	B	333	THR

Some sidechains can be flipped to improve hydrogen bonding and reduce clashes. There are no such sidechains identified.

5.3.3 RNA ⓘ

There are no RNA chains in this entry.

5.4 Non-standard residues in protein, DNA, RNA chains ⓘ

There are no non-standard protein/DNA/RNA residues in this entry.

5.5 Carbohydrates ⓘ

There are no carbohydrates in this entry.

5.6 Ligand geometry ⓘ

Of 9 ligands modelled in this entry, 1 is monoatomic - leaving 8 for Mogul analysis.

In the following table, the Counts columns list the number of bonds (or angles) for which Mogul statistics could be retrieved, the number of bonds (or angles) that are observed in the model and the number of bonds (or angles) that are defined in the chemical component dictionary. The Link column lists molecule types, if any, to which the group is linked. The Z score for a bond length (or angle) is the number of standard deviations the observed value is removed from the expected value. A bond length (or angle) with $|Z| > 2$ is considered an outlier worth inspection. RMSZ is the root-mean-square of all Z scores of the bond lengths (or angles).

Mol	Type	Chain	Res	Link	Bond lengths			Bond angles		
					Counts	RMSZ	$\# Z > 2$	Counts	RMSZ	$\# Z > 2$
2	HEM	A	501	1	49,50,50	2.52	18 (36%)	46,82,82	2.47	11 (23%)
3	CNL	A	502	-	12,12,12	2.24	4 (33%)	20,20,20	1.16	2 (10%)
4	PEG	A	503	-	6,6,6	0.79	0	5,5,5	0.53	0
5	PGE	A	504	-	9,9,9	0.83	0	8,8,8	0.28	0
6	SO4	A	505	-	4,4,4	0.21	0	6,6,6	0.22	0
2	HEM	B	501	1	49,50,50	2.56	18 (36%)	46,82,82	2.61	12 (26%)
3	CNL	B	502	-	12,12,12	2.20	2 (16%)	20,20,20	1.10	2 (10%)
8	PG4	B	503	-	12,12,12	0.83	0	11,11,11	0.37	0

In the following table, the Chirals column lists the number of chiral outliers, the number of chiral centers analysed, the number of these observed in the model and the number defined in the chemical component dictionary. Similar counts are reported in the Torsion and Rings columns. '-' means no outliers of that kind were identified.

Mol	Type	Chain	Res	Link	Chirals	Torsions	Rings
2	HEM	A	501	1	-	0/14/114/114	0/0/8/8
3	CNL	A	502	-	-	0/0/24/24	0/0/2/2
4	PEG	A	503	-	-	0/4/4/4	0/0/0/0
5	PGE	A	504	-	-	0/7/7/7	0/0/0/0
6	SO4	A	505	-	-	0/0/0/0	0/0/0/0
2	HEM	B	501	1	-	0/14/114/114	0/0/8/8

Continued on next page...

Continued from previous page...

Mol	Type	Chain	Res	Link	Chirals	Torsions	Rings
3	CNL	B	502	-	-	0/0/24/24	0/0/2/2
8	PG4	B	503	-	-	0/10/10/10	0/0/0/0

All (42) bond length outliers are listed below:

Mol	Chain	Res	Type	Atoms	Z	Observed(Å)	Ideal(Å)
2	A	501	HEM	C2B-C1B	7.12	1.46	1.44
3	B	502	CNL	O-C8	5.64	1.58	1.45
3	A	502	CNL	O-C8	5.49	1.58	1.45
2	A	501	HEM	C3C-C2C	-5.28	1.34	1.43
2	B	501	HEM	C3D-C2D	5.20	1.52	1.43
2	B	501	HEM	C3C-C2C	-5.16	1.34	1.43
2	B	501	HEM	FE-ND	5.16	2.16	1.97
2	B	501	HEM	C3B-CAB	5.08	1.56	1.40
2	A	501	HEM	C3B-CAB	4.99	1.56	1.40
2	B	501	HEM	C3C-CAC	4.98	1.56	1.40
2	A	501	HEM	FE-ND	4.86	2.15	1.97
2	B	501	HEM	C4A-C3A	4.85	1.46	1.40
2	A	501	HEM	C3C-CAC	4.80	1.55	1.40
2	A	501	HEM	C4A-C3A	4.45	1.45	1.40
2	A	501	HEM	C3B-C2B	-4.44	1.36	1.43
2	A	501	HEM	C3D-C2D	4.34	1.51	1.43
2	A	501	HEM	FE-NA	4.25	2.10	1.92
2	B	501	HEM	C3D-C4D	4.25	1.45	1.44
2	B	501	HEM	FE-NB	4.14	2.12	1.97
2	B	501	HEM	C2B-C1B	4.11	1.45	1.44
2	B	501	HEM	FE-NC	4.08	2.13	1.97
2	B	501	HEM	C3B-C2B	-3.97	1.36	1.43
2	B	501	HEM	FE-NA	3.71	2.08	1.92
3	A	502	CNL	C5-C4	-3.56	1.43	1.53
2	A	501	HEM	C3D-C4D	3.37	1.45	1.44
2	A	501	HEM	FE-NC	3.34	2.10	1.97
3	B	502	CNL	C5-C4	-3.31	1.44	1.53
2	A	501	HEM	CMC-C2C	2.83	1.56	1.47
2	A	501	HEM	CHB-C1B	2.83	1.39	1.35
2	B	501	HEM	C2D-C1D	2.63	1.45	1.44
2	A	501	HEM	FE-NB	2.56	2.07	1.97
2	B	501	HEM	CMD-C2D	2.55	1.55	1.47
2	A	501	HEM	CMB-C2B	2.54	1.55	1.47
2	B	501	HEM	CAA-C2A	2.51	1.56	1.52
2	B	501	HEM	CMB-C2B	2.49	1.55	1.47
2	B	501	HEM	CHB-C1B	2.46	1.39	1.35

Continued on next page...

Continued from previous page...

Mol	Chain	Res	Type	Atoms	Z	Observed(Å)	Ideal(Å)
2	B	501	HEM	CMC-C2C	2.39	1.54	1.47
2	A	501	HEM	CAA-C2A	2.19	1.55	1.52
2	A	501	HEM	CHA-C4D	2.18	1.39	1.35
3	A	502	CNL	C2-C3	-2.16	1.48	1.53
3	A	502	CNL	C7-C1	-2.01	1.48	1.52
2	A	501	HEM	CMD-C2D	2.01	1.53	1.47

All (27) bond angle outliers are listed below:

Mol	Chain	Res	Type	Atoms	Z	Observed(°)	Ideal(°)
2	B	501	HEM	C3B-C4B-NB	-9.95	106.88	114.00
2	A	501	HEM	C3B-C4B-NB	-8.43	107.97	114.00
2	B	501	HEM	C4D-ND-C1D	7.85	113.19	105.16
2	A	501	HEM	C4D-ND-C1D	7.32	112.66	105.16
2	B	501	HEM	C1B-NB-C4B	5.58	110.87	105.16
2	A	501	HEM	CBD-CAD-C3D	-5.00	103.45	114.37
2	A	501	HEM	C2D-C1D-ND	-4.40	107.74	112.93
2	A	501	HEM	C1B-NB-C4B	4.05	109.30	105.16
2	B	501	HEM	C2D-C1D-ND	-3.83	108.40	112.93
2	B	501	HEM	CBD-CAD-C3D	-3.79	106.09	114.37
2	A	501	HEM	CHD-C1D-ND	3.76	127.71	124.58
2	A	501	HEM	CMA-C3A-C4A	-3.71	122.91	128.62
2	B	501	HEM	CMA-C3A-C4A	-3.48	123.26	128.62
2	A	501	HEM	C3A-C4A-NA	-3.46	106.80	109.41
2	B	501	HEM	C4C-NC-C1C	3.19	108.85	105.53
2	B	501	HEM	C3A-C4A-NA	-3.18	107.01	109.41
3	A	502	CNL	C10-C8-C9	-2.97	104.91	110.61
3	B	502	CNL	C10-C8-C9	-2.71	105.40	110.61
2	A	501	HEM	C4A-C3A-C2A	2.71	108.88	107.00
2	B	501	HEM	CHD-C4C-NC	2.65	127.03	124.73
2	A	501	HEM	C4C-NC-C1C	2.59	108.23	105.53
2	A	501	HEM	CAD-C3D-C4D	2.46	128.95	124.53
2	B	501	HEM	C4A-C3A-C2A	2.25	108.56	107.00
2	B	501	HEM	CHD-C1D-ND	2.25	126.45	124.58
3	A	502	CNL	O-C1-C2	-2.22	101.30	108.46
2	B	501	HEM	CHC-C4B-NB	2.20	126.41	124.58
3	B	502	CNL	C5-C4-C8	-2.17	104.80	109.11

There are no chirality outliers.

There are no torsion outliers.

There are no ring outliers.

5.7 Other polymers ⓘ

There are no such residues in this entry.

5.8 Polymer linkage issues

There are no chain breaks in this entry.

6 Fit of model and data ⓘ

6.1 Protein, DNA and RNA chains ⓘ

In the following table, the column labelled ‘#RSRZ > 2’ contains the number (and percentage) of RSRZ outliers, followed by percent RSRZ outliers for the chain as percentile scores relative to all X-ray entries and entries of similar resolution. The OWAB column contains the minimum, median, 95th percentile and maximum values of the occupancy-weighted average B-factor per residue. The column labelled ‘Q < 0.9’ lists the number of (and percentage) of residues with an average occupancy less than 0.9.

Mol	Chain	Analysed	<RSRZ>	#RSRZ > 2		OWAB(Å ²)	Q < 0.9
1	A	396/398 (99%)	0.05	13 (3%)	44 47	13, 24, 48, 70	0
1	B	396/398 (99%)	0.04	17 (4%)	34 36	13, 24, 45, 68	0
All	All	792/796 (99%)	0.05	30 (3%)	36 41	13, 24, 47, 70	0

All (30) RSRZ outliers are listed below:

Mol	Chain	Res	Type	RSRZ
1	A	8	THR	5.2
1	A	181	GLU	5.1
1	B	179	ASN	5.1
1	A	177	VAL	4.9
1	B	218	ILE	4.8
1	B	8	THR	4.4
1	A	403	SER	4.1
1	B	181	GLU	4.0
1	A	218	ILE	4.0
1	A	179	ASN	3.8
1	A	219	ASP	3.7
1	B	180	PRO	3.4
1	B	220	GLY	3.2
1	B	221	GLU	3.1
1	B	333	THR	3.0
1	A	180	PRO	2.9
1	A	221	GLU	2.9
1	B	177	VAL	2.9
1	B	334	PRO	2.7
1	B	403	SER	2.7
1	B	214	ILE	2.7
1	B	215	MET	2.6
1	A	220	GLY	2.5
1	B	207	ASN	2.5

Continued on next page...

Continued from previous page...

Mol	Chain	Res	Type	RSRZ
1	B	204	ASN	2.4
1	B	247	LEU	2.4
1	A	182	GLU	2.3
1	A	204	ASN	2.3
1	B	219	ASP	2.1
1	A	400	LYS	2.1

6.2 Non-standard residues in protein, DNA, RNA chains ⓘ

There are no non-standard protein/DNA/RNA residues in this entry.

6.3 Carbohydrates ⓘ

There are no carbohydrates in this entry.

6.4 Ligands ⓘ

In the following table, the Atoms column lists the number of modelled atoms in the group and the number defined in the chemical component dictionary. LLDF column lists the quality of electron density of the group with respect to its neighbouring residues in protein, DNA or RNA chains. The B-factors column lists the minimum, median, 95th percentile and maximum values of B factors of atoms in the group. The column labelled 'Q< 0.9' lists the number of atoms with occupancy less than 0.9.

Mol	Type	Chain	Res	Atoms	RSR	LLDF	B-factors(Å ²)	Q<0.9
5	PGE	A	504	10/10	0.18	8.65	49,53,58,58	0
3	CNL	B	502	11/11	0.39	7.02	28,32,34,36	6
3	CNL	A	502	11/11	0.41	6.56	18,20,23,23	9
6	SO4	A	505	5/5	0.21	3.03	76,79,80,82	0
8	PG4	B	503	13/13	0.15	1.52	48,56,75,76	0
4	PEG	A	503	7/7	0.13	0.80	42,42,54,55	0
2	HEM	A	501	43/43	0.15	0.57	12,21,25,27	0
2	HEM	B	501	43/43	0.14	0.28	15,20,23,28	0
7	CL	A	506	1/1	0.09	-0.42	24,24,24,24	0

6.5 Other polymers ⓘ

There are no such residues in this entry.