



Full wwPDB X-ray Structure Validation Report

Feb 28, 2014 – 04:02 PM GMT

PDB ID : 4LIX
Title : Crystal structure of ent-copalyl diphosphate synthase from Arabidopsis thaliana in complex with (S)-15-aza-14,15-dihydrogeranylgeranylthiolodiphosphate at 1.55 Å resolution
Authors : Koksai, M.; Christianson, D.W.
Deposited on : 2013-07-04
Resolution : 1.55 Å(reported)

This is a full wwPDB validation report for a publicly released PDB entry.
We welcome your comments at validation@mail.wwpdb.org
A user guide is available at <http://wwpdb.org/ValidationPDFNotes.html>

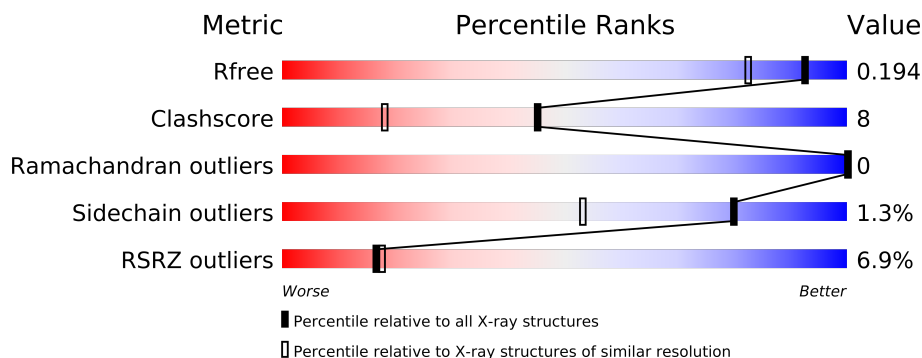
The following versions of software and data (see [references](#)) were used in the production of this report:

MolProbity : 4.02b-467
Mogul : 1.15 2013
Xtriage (Phenix) : dev-1323
EDS : stable22639
Percentile statistics : 21963
Refmac : 5.8.0049
CCP4 : 6.3.0 (Settle)
Ideal geometry (proteins) : Engh & Huber (2001)
Ideal geometry (DNA, RNA) : Parkinson et. al. (1996)
Validation Pipeline (wwPDB-VP) : stable22683

1 Overall quality at a glance

The reported resolution of this entry is 1.55 Å.

Percentile scores (ranging between 0-100) for global validation metrics of the entry are shown in the following graphic. The table shows the number of entries on which the scores are based.



Metric	Whole archive (#Entries)	Similar resolution (#Entries, resolution range(Å))
R_{free}	66092	1031 (1.56-1.52)
Clashscore	79885	1155 (1.56-1.52)
Ramachandran outliers	78287	1127 (1.56-1.52)
Sidechain outliers	78261	1125 (1.56-1.52)
RSRZ outliers	66119	1031 (1.56-1.52)

The table below summarises the geometric issues observed across the polymeric chains and their fit to the electron density. The red, orange, yellow and green segments on the lower bar indicate the fraction of residues that contain outliers for ≥ 3 , 2, 1 and 0 types of geometric quality criteria. The upper red bar (where present) indicates the fraction of residues that have poor fit to the electron density.

Mol	Chain	Length	Quality of chain
1	A	727	

The following table lists non-polymeric compounds that are outliers for geometric or electron-density-fit criteria:

Mol	Type	Chain	Res	Geometry	Electron density
3	PO4	A	902	-	X
4	GOL	A	903	-	X

2 Entry composition

There are 5 unique types of molecules in this entry. The entry contains 6360 atoms, of which 0 are hydrogen and 0 are deuterium.

In the tables below, the ZeroOcc column contains the number of atoms modelled with zero occupancy, the AltConf column contains the number of residues with at least one atom in alternate conformation and the Trace column contains the number of residues modelled with at most 2 atoms.

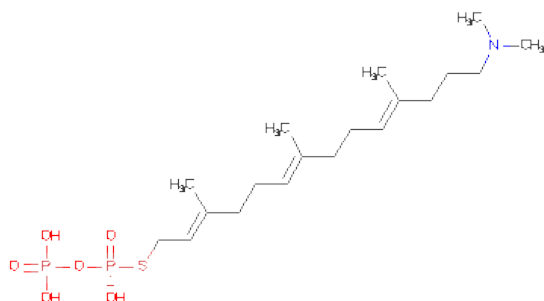
- Molecule 1 is a protein called Ent-copalyl diphosphate synthase, chloroplastic.

Mol	Chain	Residues	Atoms					ZeroOcc	AltConf	Trace
			Total	C	N	O	S			
1	A	678	5647	3625	947	1045	30	0	34	0

There are 9 discrepancies between the modelled and reference sequences:

Chain	Residue	Modelled	Actual	Comment	Reference
A	84	MET	-	INITIATING METHIONINE	UNP Q38802
A	803	GLY	-	EXPRESSION TAG	UNP Q38802
A	804	SER	-	EXPRESSION TAG	UNP Q38802
A	805	HIS	-	EXPRESSION TAG	UNP Q38802
A	806	HIS	-	EXPRESSION TAG	UNP Q38802
A	807	HIS	-	EXPRESSION TAG	UNP Q38802
A	808	HIS	-	EXPRESSION TAG	UNP Q38802
A	809	HIS	-	EXPRESSION TAG	UNP Q38802
A	810	HIS	-	EXPRESSION TAG	UNP Q38802

- Molecule 2 is S-[(2E,6E,10E)-14-(DIMETHYLAMINO)-3,7,11-TRIMETHYLTETRADEC-2,6,10-TRIEN-1-YL]TRIHYDROGEN THIODIPHOSPHATE (three-letter code: AG8) (formula: C₁₉H₃₇NO₆P₂S).



Mol	Chain	Residues	Atoms						ZeroOcc	AltConf
2	A	1	Total	C	N	O	P	S	0	0
			29	19	1	6	2	1		

- Molecule 3 is PHOSPHATE ION (three-letter code: PO4) (formula: O_4P).



Mol	Chain	Residues	Atoms		ZeroOcc	AltConf
3	A	1	Total	O P	0	0
			5	4 1		

- Molecule 4 is GLYCEROL (three-letter code: GOL) (formula: $C_3H_8O_3$).



Mol	Chain	Residues	Atoms			ZeroOcc	AltConf
4	A	1	Total	C	O	0	0
			6	3	3		

- Molecule 5 is water.

Mol	Chain	Residues	Atoms		ZeroOcc	AltConf
5	A	673	Total	O	0	0
			673	673		

3 Residue-property plots

These plots are drawn for all protein, RNA and DNA chains in the entry. The first graphic for a chain summarises the proportions of errors displayed in the second graphic. The second graphic shows the sequence view annotated by issues in geometry and electron density. Residues are color-coded according to the number of geometric quality criteria for which they contain at least one outlier: green = 0, yellow = 1, orange = 2 and red = 3 or more. A red dot above a residue indicates a poor fit to the electron density ($RSRZ > 2$). Stretches of 2 or more consecutive residues without any outlier are shown as a green connector. Residues present in the sample, but not in the model, are shown in grey.

- Molecule 1: Ent-copalyl diphosphate synthase, chloroplastic



4 Data and refinement statistics

Property	Value	Source
Space group	P 21 21 21	Depositor
Cell constants a, b, c, α , β , γ	130.18Å 51.39Å 114.31Å 90.00° 90.00° 90.00°	Depositor
Resolution (Å)	38.22 – 1.55 38.22 – 1.55	Depositor EDS
% Data completeness (in resolution range)	94.0 (38.22-1.55) 94.0 (38.22-1.55)	Depositor EDS
R_{merge}	0.06	Depositor
R_{sym}	0.06	Depositor
$\langle I/\sigma(I) \rangle$ ¹	2.46 (at 1.55Å)	Xtriage
Refinement program	PHENIX (phenix.refine: 1.5.2)	Depositor
R, R_{free}	0.169 , 0.196 0.165 , 0.194	Depositor DCC
R_{free} test set	1911 reflections (1.81%)	DCC
Wilson B-factor (Å ²)	16.5	Xtriage
Anisotropy	0.303	Xtriage
Bulk solvent k_{sol} (e/Å ³), B_{sol} (Å ²)	0.38 , 47.0	EDS
Estimated twinning fraction	No twinning to report.	Xtriage
L-test for twinning	$\langle L \rangle = 0.49$, $\langle L^2 \rangle = 0.32$	Xtriage
Outliers	0 of 110624 reflections	Xtriage
F_o, F_c correlation	0.97	EDS
Total number of atoms	6360	wwPDB-VP
Average B, all atoms (Å ²)	26.0	wwPDB-VP

Xtriage's analysis on translational NCS is as follows: *The largest off-origin peak in the Patterson function is 3.57% of the height of the origin peak. No significant pseudotranslation is detected.*

¹Intensities estimated from amplitudes.

5 Model quality i

5.1 Standard geometry i

Bond lengths and bond angles in the following residue types are not validated in this section: GOL, CSO, PO4, AG8

The Z score for a bond length (or angle) is the number of standard deviations the observed value is removed from the expected value. A bond length (or angle) with $|Z| > 5$ is considered an outlier worth inspection. RMSZ is the root-mean-square of all Z scores of the bond lengths (or angles).

Mol	Chain	Bond lengths		Bond angles	
		RMSZ	$\# Z > 5$	RMSZ	$\# Z > 5$
1	A	0.71	0/5967	0.80	5/8055 (0.1%)

There are no bond length outliers.

All (5) bond angle outliers are listed below:

Mol	Chain	Res	Type	Atoms	Z	Observed(°)	Ideal(°)
1	A	337	ARG	NE-CZ-NH2	-5.90	117.35	120.30
1	A	231[A]	ASP	CB-CG-OD1	5.45	123.21	118.30
1	A	231[B]	ASP	CB-CG-OD1	5.45	123.21	118.30
1	A	340	ARG	NE-CZ-NH2	-5.07	117.77	120.30
1	A	752	MET	CG-SD-CE	5.01	108.21	100.20

There are no chirality outliers.

There are no planarity outliers.

5.2 Close contacts i

In the following table, the Non-H and H(model) columns list the number of non-hydrogen atoms and hydrogen atoms in the chain respectively. The H(added) column lists the number of hydrogens added by MolProbity. The Clashes column lists the number of clashes within the asymmetric unit, and the number in parentheses is this value normalized per 1000 atoms of the molecule in the chain. The Symm-Clashes column gives symmetry related clashes, in the same way as for the Clashes column.

Mol	Chain	Non-H	H(model)	H(added)	Clashes	Symm-Clashes
1	A	5647	0	5505	92	0
2	A	29	0	34	4	0
3	A	5	0	0	0	0
4	A	6	0	8	3	0

Continued on next page...

Continued from previous page...

Mol	Chain	Non-H	H(model)	H(added)	Clashes	Symm-Clashes
5	A	673	0	0	22	0
All	All	6360	0	5547	95	0

Clashscore is defined as the number of clashes calculated for the entry per 1000 atoms (including hydrogens) of the entry. The overall clashscore for this entry is 8.

All (95) close contacts within the same asymmetric unit are listed below.

Atom-1	Atom-2	Distance(Å)	Clash(Å)
1:A:90:ASN:N	1:A:90:ASN:HD22	1.58	0.99
1:A:713:HIS:HD2	1:A:715:HIS:H	1.25	0.85
1:A:157[B]:LEU:HD22	1:A:504[B]:VAL:HG11	1.58	0.83
4:A:903:GOL:H31	5:A:1200:HOH:O	1.80	0.81
1:A:208:ILE:HD12	1:A:463:LYS:HE3	1.62	0.79
1:A:90:ASN:N	1:A:90:ASN:ND2	2.29	0.78
1:A:192:ARG:HD3	4:A:903:GOL:O1	1.85	0.77
1:A:251:LYS:HB2	5:A:1467:HOH:O	1.87	0.75
1:A:495:ILE:HG21	1:A:802:VAL:HG11	1.71	0.72
1:A:526[A]:LYS:HG2	1:A:802:VAL:CG1	2.21	0.71
1:A:332:ILE:CG2	1:A:383[B]:MET:CG	2.68	0.71
1:A:295:PHE:HA	1:A:298[B]:MET:HE2	1.72	0.71
1:A:490:GLU:HG2	5:A:1378:HOH:O	1.90	0.70
1:A:332:ILE:CG2	1:A:383[B]:MET:HG3	2.22	0.69
1:A:603:SER:O	1:A:607:ARG:HG3	1.94	0.66
1:A:332:ILE:HG22	1:A:383[B]:MET:HG2	1.78	0.65
1:A:90:ASN:N	5:A:1543:HOH:O	2.30	0.64
1:A:464:TRP:CZ2	2:A:901:AG8:H16A	2.33	0.63
4:A:903:GOL:H12	5:A:1082:HOH:O	1.99	0.63
1:A:506[B]:ILE:CD1	1:A:510:LEU:CD2	2.77	0.63
1:A:417:ASN:HB3	5:A:1576:HOH:O	1.98	0.62
1:A:526[A]:LYS:HG2	1:A:802:VAL:HG12	1.82	0.61
1:A:486[B]:LEU:HD11	1:A:782:TYR:CD2	2.35	0.61
1:A:671:LEU:HB3	1:A:701:LEU:HD21	1.83	0.60
1:A:464:TRP:HZ2	2:A:901:AG8:H16A	1.66	0.60
1:A:332:ILE:CG2	1:A:383[B]:MET:HG2	2.30	0.59
1:A:681:GLU:HA	1:A:684:LYS:HZ3	1.68	0.58
1:A:641:GLN:CA	1:A:641:GLN:HE21	2.15	0.58
1:A:260:THR:HB	2:A:901:AG8:H04	1.86	0.57
1:A:641:GLN:HA	1:A:641:GLN:HE21	1.67	0.57
1:A:713:HIS:CD2	1:A:715:HIS:H	2.14	0.57
2:A:901:AG8:H04A	5:A:1531:HOH:O	2.03	0.57
1:A:526[A]:LYS:HG2	1:A:802:VAL:HG11	1.85	0.56
1:A:506[B]:ILE:HD12	1:A:510:LEU:CD2	2.36	0.56

Continued on next page...

Continued from previous page...

Atom-1	Atom-2	Distance(Å)	Clash(Å)
1:A:432[B]:LEU:HD11	1:A:482:TRP:CH2	2.40	0.56
1:A:432[B]:LEU:CD1	1:A:482:TRP:CH2	2.88	0.55
1:A:504[A]:VAL:HG22	1:A:512:ARG:CZ	2.37	0.55
1:A:577:GLU:CD	1:A:577:GLU:H	2.11	0.54
1:A:415:GLN:NE2	5:A:1524:HOH:O	2.37	0.54
1:A:580:HIS:HD2	5:A:1388:HOH:O	1.90	0.54
1:A:216[A]:SER:HB3	5:A:1449:HOH:O	2.08	0.53
1:A:748:MET:O	1:A:752:MET:HG2	2.08	0.53
1:A:756:VAL:HG13	1:A:760:LEU:HD22	1.91	0.53
1:A:332:ILE:HG22	1:A:383[B]:MET:CG	2.36	0.52
1:A:745:ILE:O	1:A:749:GLU:HG3	2.10	0.52
1:A:105[B]:LEU:CD1	1:A:334[B]:ILE:HD13	2.40	0.52
1:A:705:ASN:OD1	1:A:705:ASN:C	2.47	0.52
1:A:90:ASN:N	5:A:1542:HOH:O	2.44	0.51
1:A:671:LEU:N	1:A:671:LEU:HD22	2.26	0.50
1:A:681:GLU:HA	1:A:684:LYS:NZ	2.26	0.50
1:A:105[B]:LEU:HD12	1:A:334[B]:ILE:HD13	1.93	0.50
1:A:362:TRP:CZ2	1:A:399:VAL:HG11	2.47	0.50
1:A:199:GLU:HG3	5:A:1623:HOH:O	2.11	0.50
1:A:168:LEU:O	1:A:171[B]:VAL:HG22	2.11	0.50
1:A:466:ILE:HB	1:A:504[B]:VAL:HG13	1.94	0.49
1:A:669:ASN:ND2	5:A:1565:HOH:O	2.45	0.49
1:A:321:PRO:HG2	1:A:324:PHE:HB2	1.95	0.49
1:A:216[B]:SER:HB3	5:A:1449:HOH:O	2.13	0.49
1:A:122:TRP:HZ3	1:A:298[B]:MET:HE1	1.78	0.48
1:A:348[B]:GLU:CD	5:A:1549:HOH:O	2.51	0.48
1:A:238:ILE:HG23	1:A:239:TYR:N	2.29	0.48
1:A:466:ILE:HB	1:A:504[B]:VAL:CG1	2.44	0.47
1:A:701:LEU:HD23	1:A:708:THR:HG21	1.97	0.47
1:A:490:GLU:HG3	5:A:1389:HOH:O	2.15	0.47
1:A:641:GLN:HA	1:A:641:GLN:NE2	2.29	0.47
1:A:495:ILE:CG2	1:A:802:VAL:HG11	2.42	0.47
1:A:332:ILE:HG21	1:A:383[B]:MET:CG	2.46	0.46
1:A:599:PHE:CZ	1:A:642:ALA:HA	2.50	0.46
1:A:746:LYS:O	1:A:750:LYS:HD3	2.16	0.46
1:A:205:HIS:HD2	5:A:1183:HOH:O	1.98	0.46
1:A:456:GLU:HG2	5:A:1495:HOH:O	2.16	0.45
1:A:602:SER:O	1:A:606:ARG:HG3	2.17	0.45
1:A:211:GLU:OE2	1:A:241:LYS:HD2	2.16	0.45
1:A:432[B]:LEU:HD13	1:A:482:TRP:CH2	2.51	0.45
1:A:548:GLU:CG	1:A:559[A]:ARG:HH22	2.30	0.45
1:A:721:GLU:OE1	1:A:725:ARG:NH1	2.50	0.45

Continued on next page...

Continued from previous page...

Atom-1	Atom-2	Distance(Å)	Clash(Å)
1:A:506[B]:ILE:CD1	1:A:510:LEU:HD23	2.47	0.43
1:A:105[B]:LEU:CD1	1:A:334[B]:ILE:CD1	2.96	0.43
1:A:801:LYS:HG3	5:A:1118:HOH:O	2.18	0.43
1:A:390[B]:GLN:NE2	5:A:1135:HOH:O	2.46	0.43
1:A:90:ASN:O	1:A:95:LYS:HE2	2.18	0.43
1:A:555:TRP:CH2	1:A:641:GLN:HG3	2.53	0.43
1:A:671:LEU:HB3	1:A:701:LEU:CD2	2.48	0.42
1:A:243:GLU:O	1:A:247:THR:HG23	2.18	0.42
1:A:402[B]:ASN:ND2	5:A:1089:HOH:O	2.53	0.41
1:A:171[A]:VAL:HG12	1:A:226:ILE:HD13	2.02	0.41
1:A:215:PRO:HD3	1:A:238:ILE:HD11	2.03	0.41
1:A:682:LYS:HD2	5:A:1613:HOH:O	2.21	0.41
1:A:401:LYS:HA	1:A:439:ILE:CD1	2.50	0.41
1:A:718:ARG:O	1:A:718:ARG:HD2	2.21	0.41
1:A:506[B]:ILE:HD12	1:A:510:LEU:HD23	2.02	0.41
1:A:432[B]:LEU:HD11	1:A:482:TRP:CZ2	2.56	0.41
1:A:440:LEU:HA	1:A:440:LEU:HD23	1.95	0.40
1:A:168:LEU:HA	1:A:171[B]:VAL:HG22	2.04	0.40
1:A:205:HIS:HB3	1:A:506[A]:ILE:HD13	2.03	0.40

There are no symmetry-related clashes.

5.3 Torsion angles

5.3.1 Protein backbone ⓘ

In the following table, the Percentiles column shows the percent Ramachandran outliers of the chain as a percentile score with respect to all X-ray entries followed by that with respect to entries of similar resolution. The Analysed column shows the number of residues for which the backbone conformation was analysed, and the total number of residues.

Mol	Chain	Analysed	Favoured	Allowed	Outliers	Percentiles	
1	A	703/727 (97%)	690 (98%)	13 (2%)	0	100	100

There are no Ramachandran outliers to report.

5.3.2 Protein sidechains ⓘ

In the following table, the Percentiles column shows the percent sidechain outliers of the chain as a percentile score with respect to all X-ray entries followed by that with respect to entries of

similar resolution. The Analysed column shows the number of residues for which the sidechain conformation was analysed, and the total number of residues.

Mol	Chain	Analysed	Rotameric	Outliers	Percentiles	
1	A	634/643 (99%)	626 (99%)	8 (1%)	80	53

All (8) residues with a non-rotameric sidechain are listed below:

Mol	Chain	Res	Type
1	A	90	ASN
1	A	245	LYS
1	A	329	PHE
1	A	603	SER
1	A	616	TYR
1	A	641	GLN
1	A	718	ARG
1	A	760	LEU

Some sidechains can be flipped to improve hydrogen bonding and reduce clashes. All (5) such sidechains are listed below:

Mol	Chain	Res	Type
1	A	449	ASN
1	A	502	ASN
1	A	641	GLN
1	A	669	ASN
1	A	713	HIS

5.3.3 RNA ⓘ

There are no RNA chains in this entry.

5.4 Non-standard residues in protein, DNA, RNA chains ⓘ

1 non-standard protein/DNA/RNA residue is modelled in this entry.

In the following table, the Counts columns list the number of bonds (or angles) for which Mogul statistics could be retrieved, the number of bonds (or angles) that are observed in the model and the number of bonds (or angles) that are defined in the chemical component dictionary. The Link column lists molecule types, if any, to which the group is linked. The Z score for a bond length (or angle) is the number of standard deviations the observed value is removed from the expected value. A bond length (or angle) with $|Z| > 2$ is considered an outlier worth inspection. RMSZ is the root-mean-square of all Z scores of the bond lengths (or angles).

Mol	Type	Chain	Res	Link	Bond lengths			Bond angles		
					Counts	RMSZ	# Z > 2	Counts	RMSZ	# Z > 2
1	CSO	A	411	1	6,6,7	6.61	2 (33%)	3,6,8	2.27	2 (66%)

In the following table, the Chirals column lists the number of chiral outliers, the number of chiral centers analysed, the number of these observed in the model and the number defined in the chemical component dictionary. Similar counts are reported in the Torsion and Rings columns. '-' means no outliers of that kind were identified.

Mol	Type	Chain	Res	Link	Chirals	Torsions	Rings
1	CSO	A	411	1	-	0/2/5/7	0/0/0/0

All (2) bond length outliers are listed below:

Mol	Chain	Res	Type	Atoms	Z	Observed(Å)	Ideal(Å)
1	A	411	CSO	O-C	15.57	1.22	1.11
1	A	411	CSO	OD-SG	3.87	1.79	1.62

All (2) bond angle outliers are listed below:

Mol	Chain	Res	Type	Atoms	Z	Observed(°)	Ideal(°)
1	A	411	CSO	CA-CB-SG	-3.00	107.67	113.01
1	A	411	CSO	C-CA-N	-2.21	111.62	113.83

There are no chirality outliers.

There are no torsion outliers.

There are no ring outliers.

5.5 Carbohydrates

There are no carbohydrates in this entry.

5.6 Ligand geometry

3 ligands are modelled in this entry.

In the following table, the Counts columns list the number of bonds (or angles) for which Mogul statistics could be retrieved, the number of bonds (or angles) that are observed in the model and the number of bonds (or angles) that are defined in the chemical component dictionary. The Link column lists molecule types, if any, to which the group is linked. The Z score for a bond length (or angle) is the number of standard deviations the observed value is removed from the expected

value. A bond length (or angle) with $|Z| > 2$ is considered an outlier worth inspection. RMSZ is the root-mean-square of all Z scores of the bond lengths (or angles).

Mol	Type	Chain	Res	Link	Bond lengths			Bond angles		
					Counts	RMSZ	$\# Z > 2$	Counts	RMSZ	$\# Z > 2$
2	AG8	A	901	-	28,28,28	1.10	2 (7%)	35,37,37	3.80	10 (28%)
3	PO4	A	902	-	4,4,4	0.31	0	6,6,6	0.32	0
4	GOL	A	903	-	5,5,5	0.59	0	5,5,5	0.59	0

In the following table, the Chirals column lists the number of chiral outliers, the number of chiral centers analysed, the number of these observed in the model and the number defined in the chemical component dictionary. Similar counts are reported in the Torsion and Rings columns. '-' means no outliers of that kind were identified.

Mol	Type	Chain	Res	Link	Chirals	Torsions	Rings
2	AG8	A	901	-	-	0/29/31/31	0/0/0/0
3	PO4	A	902	-	-	0/0/0/0	0/0/0/0
4	GOL	A	903	-	-	0/4/4/4	0/0/0/0

All (2) bond length outliers are listed below:

Mol	Chain	Res	Type	Atoms	Z	Observed(Å)	Ideal(Å)
2	A	901	AG8	P22-S21	2.63	2.15	2.08
2	A	901	AG8	P24-O23	2.49	1.64	1.60

All (10) bond angle outliers are listed below:

Mol	Chain	Res	Type	Atoms	Z	Observed(°)	Ideal(°)
2	A	901	AG8	P22-S21-C01	18.96	124.82	102.27
2	A	901	AG8	C01-C02-C03	-5.92	117.66	127.43
2	A	901	AG8	C18-C11-C12	4.99	122.97	115.39
2	A	901	AG8	P24-O23-P22	-3.58	121.19	131.68
2	A	901	AG8	C13-C14-N15	-3.19	105.24	113.59
2	A	901	AG8	C20-N15-C19	-2.76	102.26	109.75
2	A	901	AG8	C13-C12-C11	-2.75	106.24	112.78
2	A	901	AG8	C14-C13-C12	-2.73	104.86	112.07
2	A	901	AG8	C16-C03-C04	2.71	119.51	115.39
2	A	901	AG8	C16-C03-C02	-2.00	119.56	123.52

There are no chirality outliers.

There are no torsion outliers.

There are no ring outliers.

5.7 Other polymers ⓘ

There are no such residues in this entry.

5.8 Polymer linkage issues

There are no chain breaks in this entry.

6 Fit of model and data ⓘ

6.1 Protein, DNA and RNA chains ⓘ

In the following table, the column labelled ‘#RSRZ> 2’ contains the number (and percentage) of RSRZ outliers, followed by percent RSRZ outliers for the chain as percentile scores relative to all X-ray entries and entries of similar resolution. The OWAB column contains the minimum, median, 95th percentile and maximum values of the occupancy-weighted average B-factor per residue. The column labelled ‘Q< 0.9’ lists the number of (and percentage) of residues with an average occupancy less than 0.9.

Mol	Chain	Analysed	<RSRZ>	#RSRZ>2	OWAB(Å ²)	Q<0.9
1	A	678/727 (93%)	0.15	47 (6%) 17 18	10, 21, 50, 74	0

All (47) RSRZ outliers are listed below:

Mol	Chain	Res	Type	RSRZ
1	A	764	ASP	6.1
1	A	763	SER	6.0
1	A	238	ILE	5.3
1	A	640	VAL	5.3
1	A	616	TYR	5.2
1	A	237	ASP	4.4
1	A	607	ARG	4.4
1	A	202	ASN	4.1
1	A	203	ASP	4.0
1	A	239	TYR	3.9
1	A	368	CYS	3.9
1	A	765	THR	3.8
1	A	704	ASN	3.7
1	A	686	TYR	3.6
1	A	464	TRP	3.3
1	A	715	HIS	3.2
1	A	615	GLU	3.2
1	A	90	ASN	3.1
1	A	685	LEU	2.9
1	A	706	ASP	2.8
1	A	604	ASP	2.8
1	A	661	PHE	2.8
1	A	613	PHE	2.8
1	A	91	SER	2.7
1	A	644	ARG	2.6
1	A	780[A]	PHE	2.6
1	A	690	GLY	2.5

Continued on next page...

Continued from previous page...

Mol	Chain	Res	Type	RSRZ
1	A	671	LEU	2.5
1	A	762	GLU	2.5
1	A	639	SER	2.4
1	A	270	ASP	2.4
1	A	600	GLY	2.4
1	A	761	SER	2.3
1	A	608	SER	2.3
1	A	369	TRP	2.3
1	A	244	LEU	2.3
1	A	240	ALA	2.2
1	A	601	GLU	2.2
1	A	729	PRO	2.2
1	A	641	GLN	2.2
1	A	664	HIS	2.2
1	A	611	ASP	2.1
1	A	712	THR	2.1
1	A	599	PHE	2.1
1	A	760	LEU	2.1
1	A	92	ASN	2.1
1	A	718	ARG	2.0

6.2 Non-standard residues in protein, DNA, RNA chains ⓘ

In the following table, the Atoms column lists the number of modelled atoms in the group and the number defined in the chemical component dictionary. LLDF column lists the quality of electron density of the group with respect to its neighbouring residues in protein, DNA or RNA chains. The B-factors column lists the minimum, median, 95th percentile and maximum values of B factors of atoms in the group. The column labelled 'Q< 0.9' lists the number of atoms with occupancy less than 0.9.

Mol	Type	Chain	Res	Atoms	RSR	LLDF	B-factors(Å ²)	Q<0.9
1	CSO	A	411	7/8	0.06	-0.73	13,13,29,30	0

6.3 Carbohydrates ⓘ

There are no carbohydrates in this entry.

6.4 Ligands ⓘ

In the following table, the Atoms column lists the number of modelled atoms in the group and the number defined in the chemical component dictionary. LLDF column lists the quality of electron

density of the group with respect to its neighbouring residues in protein, DNA or RNA chains. The B-factors column lists the minimum, median, 95th percentile and maximum values of B factors of atoms in the group. The column labelled 'Q < 0.9' lists the number of atoms with occupancy less than 0.9.

Mol	Type	Chain	Res	Atoms	RSR	LLDF	B-factors(Å ²)	Q<0.9
4	GOL	A	903	6/6	0.21	8.73	16,31,44,61	0
3	PO4	A	902	5/5	0.19	2.03	48,50,52,53	0
2	AG8	A	901	29/29	0.17	1.60	16,33,82,93	0

6.5 Other polymers ⓘ

There are no such residues in this entry.