



# Full wwPDB X-ray Structure Validation Report

Feb 28, 2014 – 02:28 AM GMT

PDB ID : 3LXL  
Title : Structural and Thermodynamic Characterization of the TYK2 and JAK3 Kinase Domains in Complex with CP-690550 and CMP-6  
Authors : Chrencik, J.E.; Benson, T.E.  
Deposited on : 2010-02-25  
Resolution : 1.74 Å(reported)

This is a full wwPDB validation report for a publicly released PDB entry.  
We welcome your comments at [validation@mail.wwpdb.org](mailto:validation@mail.wwpdb.org)  
A user guide is available at <http://wwpdb.org/ValidationPDFNotes.html>

---

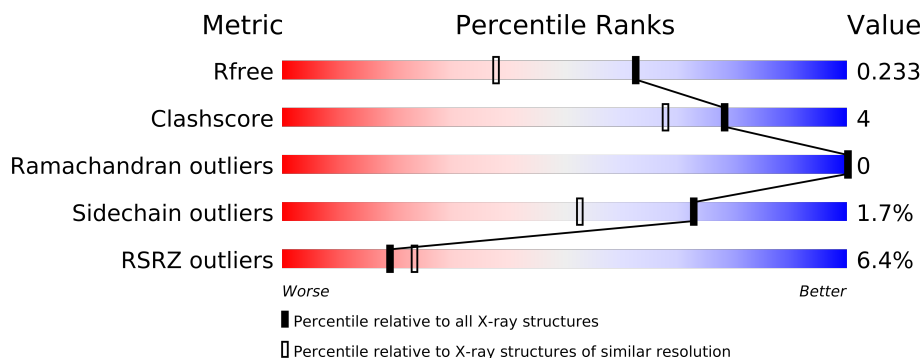
The following versions of software and data (see [references](#)) were used in the production of this report:

MolProbity : 4.02b-467  
Mogul : 1.15 2013  
Xtriage (Phenix) : dev-1323  
EDS : stable22639  
Percentile statistics : 21963  
Refmac : 5.8.0049  
CCP4 : 6.3.0 (Settle)  
Ideal geometry (proteins) : Engh & Huber (2001)  
Ideal geometry (DNA, RNA) : Parkinson et. al. (1996)  
Validation Pipeline (wwPDB-VP) : stable22683

# 1 Overall quality at a glance

The reported resolution of this entry is 1.74 Å.

Percentile scores (ranging between 0-100) for global validation metrics of the entry are shown in the following graphic. The table shows the number of entries on which the scores are based.



Metric	Whole archive (#Entries)	Similar resolution (#Entries, resolution range(Å))
$R_{free}$	66092	1657 (1.76-1.72)
Clashscore	79885	1881 (1.76-1.72)
Ramachandran outliers	78287	1859 (1.76-1.72)
Sidechain outliers	78261	1859 (1.76-1.72)
RSRZ outliers	66119	1658 (1.76-1.72)

The table below summarises the geometric issues observed across the polymeric chains and their fit to the electron density. The red, orange, yellow and green segments on the lower bar indicate the fraction of residues that contain outliers for  $\geq 3$ , 2, 1 and 0 types of geometric quality criteria. The upper red bar (where present) indicates the fraction of residues that have poor fit to the electron density.

Mol	Chain	Length	Quality of chain
1	A	327	

## 2 Entry composition

There are 3 unique types of molecules in this entry. The entry contains 2535 atoms, of which 0 are hydrogen and 0 are deuterium.

In the tables below, the ZeroOcc column contains the number of atoms modelled with zero occupancy, the AltConf column contains the number of residues with at least one atom in alternate conformation and the Trace column contains the number of residues modelled with at most 2 atoms.

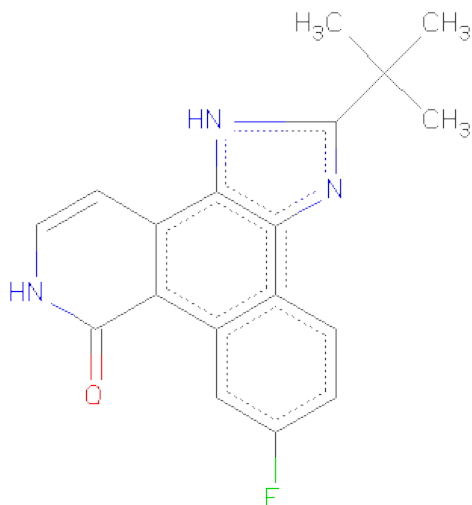
- Molecule 1 is a protein called Tyrosine-protein kinase JAK3.

Mol	Chain	Residues	Atoms					ZeroOcc	AltConf	Trace
			Total	C	N	O	S			
1	A	281	2223	1421	386	403	13	0	1	0

There are 9 discrepancies between the modelled and reference sequences:

Chain	Residue	Modelled	Actual	Comment	Reference
A	798	MET	-	EXPRESSION TAG	UNP P52333
A	799	GLY	-	EXPRESSION TAG	UNP P52333
A	800	HIS	-	EXPRESSION TAG	UNP P52333
A	801	HIS	-	EXPRESSION TAG	UNP P52333
A	802	HIS	-	EXPRESSION TAG	UNP P52333
A	803	HIS	-	EXPRESSION TAG	UNP P52333
A	804	HIS	-	EXPRESSION TAG	UNP P52333
A	805	HIS	-	EXPRESSION TAG	UNP P52333
A	1048	SER	CYS	ENGINEERED	UNP P52333

- Molecule 2 is 2-TERT-BUTYL-9-FLUORO-3,6-DIHYDRO-7H-BENZ[H]-IMIDAZ[4,5-F]IS OQUINOLINE-7-ONE (three-letter code: IZA) (formula: C<sub>18</sub>H<sub>16</sub>FN<sub>3</sub>O).



Mol	Chain	Residues	Atoms					ZeroOcc	AltConf
			Total	C	F	N	O		
2	A	1	23	18	1	3	1	0	0

- Molecule 3 is water.

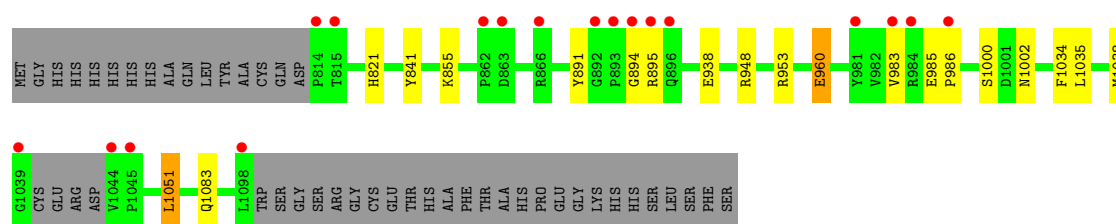
Mol	Chain	Residues	Atoms		ZeroOcc	AltConf
3	A	289	Total	O	0	0
			289	289		

### 3 Residue-property plots

These plots are drawn for all protein, RNA and DNA chains in the entry. The first graphic for a chain summarises the proportions of errors displayed in the second graphic. The second graphic shows the sequence view annotated by issues in geometry and electron density. Residues are color-coded according to the number of geometric quality criteria for which they contain at least one outlier: green = 0, yellow = 1, orange = 2 and red = 3 or more. A red dot above a residue indicates a poor fit to the electron density ( $RSRZ > 2$ ). Stretches of 2 or more consecutive residues without any outlier are shown as a green connector. Residues present in the sample, but not in the model, are shown in grey.

- Molecule 1: Tyrosine-protein kinase JAK3

Chain A: 



## 4 Data and refinement statistics

Property	Value	Source
Space group	P 21 21 21	Depositor
Cell constants a, b, c, $\alpha$ , $\beta$ , $\gamma$	47.19Å 75.19Å 89.07Å 90.00° 90.00° 90.00°	Depositor
Resolution (Å)	25.13 – 1.74 25.13 – 1.74	Depositor EDS
% Data completeness (in resolution range)	99.6 (25.13-1.74) 99.6 (25.13-1.74)	Depositor EDS
$R_{merge}$	(Not available)	Depositor
$R_{sym}$	0.03	Depositor
$\langle I/\sigma(I) \rangle$ <sup>1</sup>	3.24 (at 1.74Å)	Xtriage
Refinement program	REFMAC 5.2.0019	Depositor
R, $R_{free}$	0.193 , 0.227 0.201 , 0.233	Depositor DCC
$R_{free}$ test set	1678 reflections (5.34%)	DCC
Wilson B-factor (Å <sup>2</sup> )	27.4	Xtriage
Anisotropy	0.067	Xtriage
Bulk solvent $k_{sol}$ (e/Å <sup>3</sup> ), $B_{sol}$ (Å <sup>2</sup> )	0.35 , 37.8	EDS
Estimated twinning fraction	No twinning to report.	Xtriage
L-test for twinning	$\langle  L  \rangle = 0.52$ , $\langle L^2 \rangle = 0.36$	Xtriage
Outliers	0 of 33100 reflections	Xtriage
$F_o, F_c$ correlation	0.96	EDS
Total number of atoms	2535	wwPDB-VP
Average B, all atoms (Å <sup>2</sup> )	27.0	wwPDB-VP

Xtriage's analysis on translational NCS is as follows: *The largest off-origin peak in the Patterson function is 8.32% of the height of the origin peak. No significant pseudotranslation is detected.*

<sup>1</sup>Intensities estimated from amplitudes.

## 5 Model quality

### 5.1 Standard geometry

Bond lengths and bond angles in the following residue types are not validated in this section: IZA

The Z score for a bond length (or angle) is the number of standard deviations the observed value is removed from the expected value. A bond length (or angle) with  $|Z| > 5$  is considered an outlier worth inspection. RMSZ is the root-mean-square of all Z scores of the bond lengths (or angles).

Mol	Chain	Bond lengths		Bond angles	
		RMSZ	$\# Z  > 5$	RMSZ	$\# Z  > 5$
1	A	0.55	1/2280 (0.0%)	0.65	1/3086 (0.0%)

Chiral center outliers are detected by calculating the chiral volume of a chiral center and verifying if the center is modelled as a planar moiety or with the opposite hand. A planarity outlier is detected by checking planarity of atoms in a peptide group, atoms in a mainchain group or atoms of a sidechain that are expected to be planar.

Mol	Chain	#Chirality outliers	#Planarity outliers
1	A	0	1

All (1) bond length outliers are listed below:

Mol	Chain	Res	Type	Atoms	Z	Observed(Å)	Ideal(Å)
1	A	891	TYR	CD2-CE2	-5.56	1.31	1.39

All (1) bond angle outliers are listed below:

Mol	Chain	Res	Type	Atoms	Z	Observed(°)	Ideal(°)
1	A	953	ARG	NE-CZ-NH2	5.29	122.94	120.30

There are no chirality outliers.

All (1) planarity outliers are listed below:

Mol	Chain	Res	Type	Group
1	A	894	GLY	Peptide

## 5.2 Close contacts ⓘ

In the following table, the Non-H and H(model) columns list the number of non-hydrogen atoms and hydrogen atoms in the chain respectively. The H(added) column lists the number of hydrogens added by MolProbity. The Clashes column lists the number of clashes within the asymmetric unit, and the number in parentheses is this value normalized per 1000 atoms of the molecule in the chain. The Symm-Clashes column gives symmetry related clashes, in the same way as for the Clashes column.

Mol	Chain	Non-H	H(model)	H(added)	Clashes	Symm-Clashes
1	A	2223	0	2186	15	0
2	A	23	0	16	1	0
3	A	289	0	0	5	0
All	All	2535	0	2202	16	0

Clashscore is defined as the number of clashes calculated for the entry per 1000 atoms (including hydrogens) of the entry. The overall clashscore for this entry is 4.

All (16) close contacts within the same asymmetric unit are listed below.

Atom-1	Atom-2	Distance(Å)	Clash(Å)
1:A:1035:LEU:HA	1:A:1038:MET:HE3	1.70	0.73
1:A:938:GLU:OE1	3:A:102:HOH:O	2.09	0.69
1:A:983:VAL:HG22	1:A:1002:ASN:HB3	1.81	0.62
1:A:1034:PHE:HB3	1:A:1038:MET:HE2	1.84	0.58
2:A:1:IZA:O0	2:A:1:IZA:H7	2.04	0.56
1:A:1083:GLN:CG	3:A:349:HOH:O	2.55	0.54
1:A:1000:SER:HB3	1:A:1051:LEU:HD11	1.92	0.52
1:A:986:PRO:HD3	1:A:1002:ASN:HD21	1.76	0.49
1:A:1035:LEU:CA	1:A:1038:MET:HE3	2.42	0.48
1:A:821:HIS:HB2	1:A:841:TYR:CE1	2.49	0.47
1:A:985:GLU:CG	3:A:207:HOH:O	2.63	0.46
1:A:948:ARG:NH2	3:A:340:HOH:O	2.46	0.45
1:A:960:GLU:HG3	3:A:116:HOH:O	2.18	0.42
1:A:1035:LEU:HD23	1:A:1038:MET:HE1	2.00	0.42
1:A:1034:PHE:C	1:A:1038:MET:HE3	2.41	0.41
1:A:948:ARG:O	1:A:948:ARG:CG	2.69	0.41

There are no symmetry-related clashes.



## 5.3 Torsion angles

### 5.3.1 Protein backbone ⓘ

In the following table, the Percentiles column shows the percent Ramachandran outliers of the chain as a percentile score with respect to all X-ray entries followed by that with respect to entries of similar resolution. The Analysed column shows the number of residues for which the backbone conformation was analysed, and the total number of residues.

Mol	Chain	Analysed	Favoured	Allowed	Outliers	Percentiles	
1	A	278/327 (85%)	271 (98%)	7 (2%)	0	100	100

There are no Ramachandran outliers to report.

### 5.3.2 Protein sidechains ⓘ

In the following table, the Percentiles column shows the percent sidechain outliers of the chain as a percentile score with respect to all X-ray entries followed by that with respect to entries of similar resolution. The Analysed column shows the number of residues for which the sidechain conformation was analysed, and the total number of residues.

Mol	Chain	Analysed	Rotameric	Outliers	Percentiles	
1	A	237/283 (84%)	233 (98%)	4 (2%)	73	53

All (4) residues with a non-rotameric sidechain are listed below:

Mol	Chain	Res	Type
1	A	855	LYS
1	A	895	ARG
1	A	960	GLU
1	A	1051	LEU

Some sidechains can be flipped to improve hydrogen bonding and reduce clashes. All (2) such sidechains are listed below:

Mol	Chain	Res	Type
1	A	832	ASN
1	A	1002	ASN

### 5.3.3 RNA ⓘ

There are no RNA chains in this entry.

## 5.4 Non-standard residues in protein, DNA, RNA chains ⓘ

There are no non-standard protein/DNA/RNA residues in this entry.

## 5.5 Carbohydrates ⓘ

There are no carbohydrates in this entry.

## 5.6 Ligand geometry ⓘ

1 ligand is modelled in this entry.

In the following table, the Counts columns list the number of bonds (or angles) for which Mogul statistics could be retrieved, the number of bonds (or angles) that are observed in the model and the number of bonds (or angles) that are defined in the chemical component dictionary. The Link column lists molecule types, if any, to which the group is linked. The Z score for a bond length (or angle) is the number of standard deviations the observed value is removed from the expected value. A bond length (or angle) with  $|Z| > 2$  is considered an outlier worth inspection. RMSZ is the root-mean-square of all Z scores of the bond lengths (or angles).

Mol	Type	Chain	Res	Link	Bond lengths			Bond angles		
					Counts	RMSZ	# $ Z  > 2$	Counts	RMSZ	# $ Z  > 2$
2	IZA	A	1	-	26,26,26	1.54	6 (23%)	38,41,41	2.37	15 (39%)

In the following table, the Chirals column lists the number of chiral outliers, the number of chiral centers analysed, the number of these observed in the model and the number defined in the chemical component dictionary. Similar counts are reported in the Torsion and Rings columns. '-' means no outliers of that kind were identified.

Mol	Type	Chain	Res	Link	Chirals	Torsions	Rings
2	IZA	A	1	-	-	0/3/6/6	0/0/4/4

All (6) bond length outliers are listed below:

Mol	Chain	Res	Type	Atoms	Z	Observed(Å)	Ideal(Å)
2	A	1	IZA	C14-C2	-2.90	1.49	1.51
2	A	1	IZA	C11-C10	2.86	1.50	1.39
2	A	1	IZA	C12-N2	2.48	1.38	1.33
2	A	1	IZA	C13-C9	2.44	1.46	1.40
2	A	1	IZA	C2-N0	2.24	1.37	1.33
2	A	1	IZA	C3-C0	-2.21	1.40	1.45

All (15) bond angle outliers are listed below:

Mol	Chain	Res	Type	Atoms	Z	Observed(°)	Ideal(°)
2	A	1	IZA	C16-C14-C2	-6.33	103.65	109.39
2	A	1	IZA	C9-C1-C0	4.79	122.58	119.94
2	A	1	IZA	C14-C2-N1	4.67	126.49	123.14
2	A	1	IZA	C15-C14-C2	4.46	113.44	109.39
2	A	1	IZA	C4-C3-C0	-3.49	118.21	122.84
2	A	1	IZA	C4-C3-C8	3.40	123.13	118.62
2	A	1	IZA	C3-C0-C1	-3.26	119.88	121.86
2	A	1	IZA	C8-C10-C9	3.17	121.60	118.14
2	A	1	IZA	C2-N1-C0	2.92	106.49	103.33
2	A	1	IZA	C6-C7-C8	2.87	120.83	118.80
2	A	1	IZA	C17-C14-C2	2.81	111.94	109.39
2	A	1	IZA	C13-C9-C1	-2.33	119.89	123.78
2	A	1	IZA	C13-C9-C10	2.29	122.81	117.91
2	A	1	IZA	C7-C8-C3	-2.22	116.54	118.92
2	A	1	IZA	C5-C6-C7	-2.04	121.58	123.73

There are no chirality outliers.

There are no torsion outliers.

There are no ring outliers.

## 5.7 Other polymers ⓘ

There are no such residues in this entry.

## 5.8 Polymer linkage issues

There are no chain breaks in this entry.

## 6 Fit of model and data ⓘ

### 6.1 Protein, DNA and RNA chains ⓘ

In the following table, the column labelled ‘#RSRZ> 2’ contains the number (and percentage) of RSRZ outliers, followed by percent RSRZ outliers for the chain as percentile scores relative to all X-ray entries and entries of similar resolution. The OWAB column contains the minimum, median, 95<sup>th</sup> percentile and maximum values of the occupancy-weighted average B-factor per residue. The column labelled ‘Q< 0.9’ lists the number of (and percentage) of residues with an average occupancy less than 0.9.

Mol	Chain	Analysed	<RSRZ>	#RSRZ>2		OWAB(Å <sup>2</sup> )	Q<0.9
1	A	281/327 (85%)	0.37	18 (6%)	19 23	17, 26, 42, 49	0

All (18) RSRZ outliers are listed below:

Mol	Chain	Res	Type	RSRZ
1	A	1039	GLY	10.3
1	A	814	PRO	5.8
1	A	984	ARG	4.2
1	A	893	PRO	3.9
1	A	981	TYR	3.6
1	A	1045	PRO	3.6
1	A	986	PRO	3.5
1	A	895	ARG	3.5
1	A	1044	VAL	3.2
1	A	892	GLY	2.7
1	A	866	ARG	2.5
1	A	815	THR	2.4
1	A	862	PRO	2.2
1	A	983	VAL	2.2
1	A	1098	LEU	2.1
1	A	894	GLY	2.0
1	A	896	GLN	2.0
1	A	863	ASP	2.0

### 6.2 Non-standard residues in protein, DNA, RNA chains ⓘ

There are no non-standard protein/DNA/RNA residues in this entry.

### 6.3 Carbohydrates

There are no carbohydrates in this entry.

### 6.4 Ligands

In the following table, the Atoms column lists the number of modelled atoms in the group and the number defined in the chemical component dictionary. LLDF column lists the quality of electron density of the group with respect to its neighbouring residues in protein, DNA or RNA chains. The B-factors column lists the minimum, median, 95<sup>th</sup> percentile and maximum values of B factors of atoms in the group. The column labelled 'Q< 0.9' lists the number of atoms with occupancy less than 0.9.

Mol	Type	Chain	Res	Atoms	RSR	LLDF	B-factors(Å <sup>2</sup> )	Q<0.9
2	IZA	A	1	23/23	0.09	-0.46	18,19,22,24	0

### 6.5 Other polymers

There are no such residues in this entry.