



wwPDB X-ray Structure Validation Summary Report

Feb 27, 2014 – 03:20 PM GMT

PDB ID : 4LZ5
Title : Crystal structures of GLuR2 ligand-binding-domainin complex with glutamate and positive allosteric modulators
Authors : Pandit, J.
Deposited on : 2013-07-31
Resolution : 1.50 Å(reported)

This is a wwPDB validation summary report for a publicly released PDB entry.

We welcome your comments at validation@mail.wwpdb.org

A user guide is available at <http://wwpdb.org/ValidationPDFNotes.html>

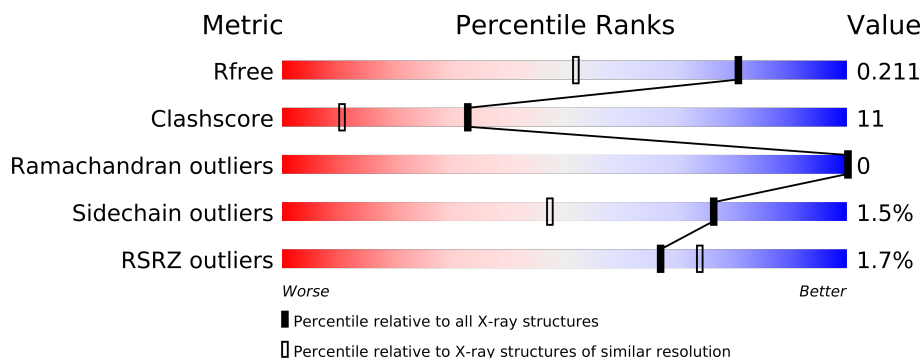
The following versions of software and data (see [references](#)) were used in the production of this report:

MolProbity	:	4.02b-467
Mogul	:	1.15 2013
Xtriage (Phenix)	:	dev-1323
EDS	:	stable22639
Percentile statistics	:	21963
Refmac	:	5.8.0049
CCP4	:	6.3.0 (Settle)
Ideal geometry (proteins)	:	Engh & Huber (2001)
Ideal geometry (DNA, RNA)	:	Parkinson et. al. (1996)
Validation Pipeline (wwPDB-VP)	:	stable22683

1 Overall quality at a glance

The reported resolution of this entry is 1.50 Å.

Percentile scores (ranging between 0-100) for global validation metrics of the entry are shown in the following graphic. The table shows the number of entries on which the scores are based.



Metric	Whole archive (#Entries)	Similar resolution (#Entries, resolution range(Å))
R_{free}	66092	1513 (1.50-1.50)
Clashscore	79885	1768 (1.50-1.50)
Ramachandran outliers	78287	1720 (1.50-1.50)
Sidechain outliers	78261	1718 (1.50-1.50)
RSRZ outliers	66119	1514 (1.50-1.50)

The table below summarises the geometric issues observed across the polymeric chains and their fit to the electron density. The red, orange, yellow and green segments on the lower bar indicate the fraction of residues that contain outliers for ≥ 3 , 2, 1 and 0 types of geometric quality criteria. The upper red bar (where present) indicates the fraction of residues that have poor fit to the electron density.

Mol	Chain	Length	Quality of chain
1	A	275	
1	B	275	
1	C	275	

The following table lists non-polymeric compounds that are outliers for geometric or electron-density-fit criteria:

Mol	Type	Chain	Res	Geometry	Electron density
4	1YV	B	805	-	X
4	1YV	C	804[A]	-	X
4	1YV	C	804[B]	-	X

2 Entry composition

There are 5 unique types of molecules in this entry. The entry contains 7405 atoms, of which 0 are hydrogen and 0 are deuterium.

In the tables below, the ZeroOcc column contains the number of atoms modelled with zero occupancy, the AltConf column contains the number of residues with at least one atom in alternate conformation and the Trace column contains the number of residues modelled with at most 2 atoms.

- Molecule 1 is a protein called Glutamate receptor 2.

Mol	Chain	Residues	Atoms					ZeroOcc	AltConf	Trace
1	A	258	Total	C	N	O	S	0	0	0
			2018	1286	336	382	14			
1	B	257	Total	C	N	O	S	0	0	0
			2009	1280	334	381	14			
1	C	257	Total	C	N	O	S	0	0	0
			2008	1279	334	381	14			

There are 30 discrepancies between the modelled and reference sequences:

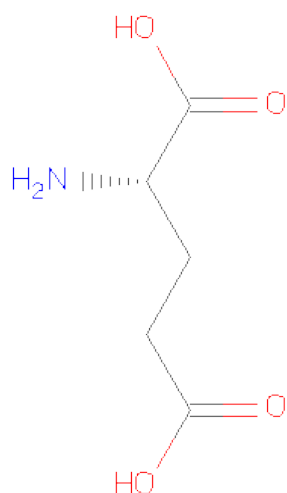
Chain	Residue	Modelled	Actual	Comment	Reference
A	378	GLY	-	EXPRESSION TAG	UNP P19491
A	379	SER	-	EXPRESSION TAG	UNP P19491
A	380	ALA	-	EXPRESSION TAG	UNP P19491
A	381	MET	-	EXPRESSION TAG	UNP P19491
A	382	GLY	-	EXPRESSION TAG	UNP P19491
A	389	ARG	GLY	ENGINEERED MUTATION	UNP P19491
A	390	GLY	LEU	ENGINEERED MUTATION	UNP P19491
A	391	ALA	GLU	ENGINEERED MUTATION	UNP P19491
A	507	GLY	-	LINKER	UNP P19491
A	508	THR	-	LINKER	UNP P19491
B	378	GLY	-	EXPRESSION TAG	UNP P19491
B	379	SER	-	EXPRESSION TAG	UNP P19491
B	380	ALA	-	EXPRESSION TAG	UNP P19491
B	381	MET	-	EXPRESSION TAG	UNP P19491
B	382	GLY	-	EXPRESSION TAG	UNP P19491
B	389	ARG	GLY	ENGINEERED MUTATION	UNP P19491
B	390	GLY	LEU	ENGINEERED MUTATION	UNP P19491
B	391	ALA	GLU	ENGINEERED MUTATION	UNP P19491
B	507	GLY	-	LINKER	UNP P19491
B	508	THR	-	LINKER	UNP P19491
C	378	GLY	-	EXPRESSION TAG	UNP P19491
C	379	SER	-	EXPRESSION TAG	UNP P19491
C	380	ALA	-	EXPRESSION TAG	UNP P19491

Continued on next page...

Continued from previous page...

Chain	Residue	Modelled	Actual	Comment	Reference
C	381	MET	-	EXPRESSION TAG	UNP P19491
C	382	GLY	-	EXPRESSION TAG	UNP P19491
C	389	ARG	GLY	ENGINEERED MUTATION	UNP P19491
C	390	GLY	LEU	ENGINEERED MUTATION	UNP P19491
C	391	ALA	GLU	ENGINEERED MUTATION	UNP P19491
C	507	GLY	-	LINKER	UNP P19491
C	508	THR	-	LINKER	UNP P19491

- Molecule 2 is GLUTAMIC ACID (three-letter code: GLU) (formula: $C_5H_9NO_4$).

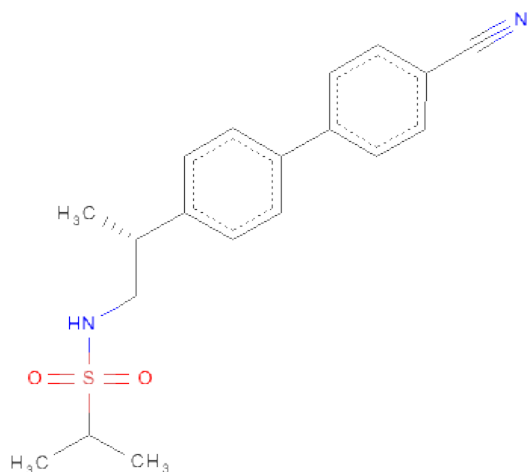


Mol	Chain	Residues	Atoms				ZeroOcc	AltConf
2	A	1	Total	C	N	O	0	0
			10	5	1	4		
2	B	1	Total	C	N	O	0	0
			10	5	1	4		
2	C	1	Total	C	N	O	0	0
			10	5	1	4		

- Molecule 3 is ZINC ION (three-letter code: ZN) (formula: Zn).

Mol	Chain	Residues	Atoms		ZeroOcc	AltConf
3	B	3	Total	Zn	0	0
			3	3		
3	C	2	Total	Zn	0	0
			2	2		

- Molecule 4 is N-[(2R)-2-(4'-CYANOBIHENYL-4-YL)PROPYL]PROPANE-2-SULFONAMIDE (three-letter code: 1YV) (formula: C₁₉H₂₂N₂O₂S).



Mol	Chain	Residues	Atoms					ZeroOcc	AltConf
4	B	1	Total	C	N	O	S	0	0
			24	19	2	2	1		
4	C	1	Total	C	N	O	S	0	1
			48	38	4	4	2		

- Molecule 5 is water.

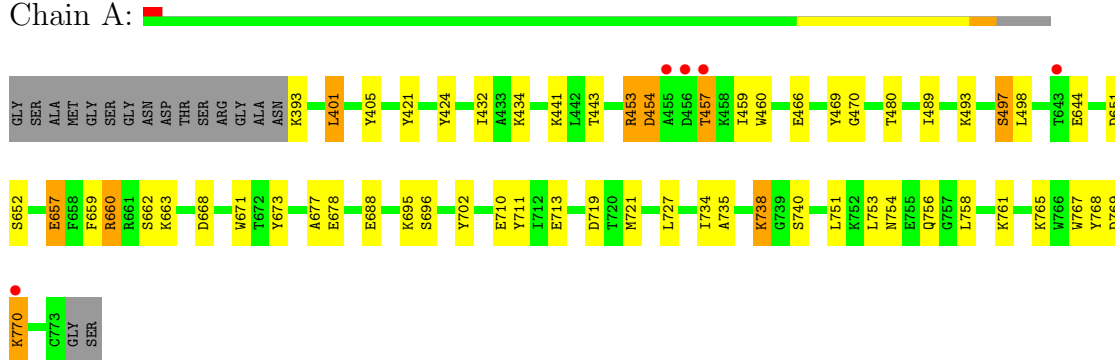
Mol	Chain	Residues	Atoms		ZeroOcc	AltConf
5	A	415	Total	O	0	0
			415	415		
5	B	475	Total	O	0	0
			475	475		
5	C	373	Total	O	0	0
			373	373		

3 Residue-property plots

These plots are drawn for all protein, RNA and DNA chains in the entry. The first graphic for a chain summarises the proportions of errors displayed in the second graphic. The second graphic shows the sequence view annotated by issues in geometry and electron density. Residues are color-coded according to the number of geometric quality criteria for which they contain at least one outlier: green = 0, yellow = 1, orange = 2 and red = 3 or more. A red dot above a residue indicates a poor fit to the electron density ($RSRZ > 2$). Stretches of 2 or more consecutive residues without any outlier are shown as a green connector. Residues present in the sample, but not in the model, are shown in grey.

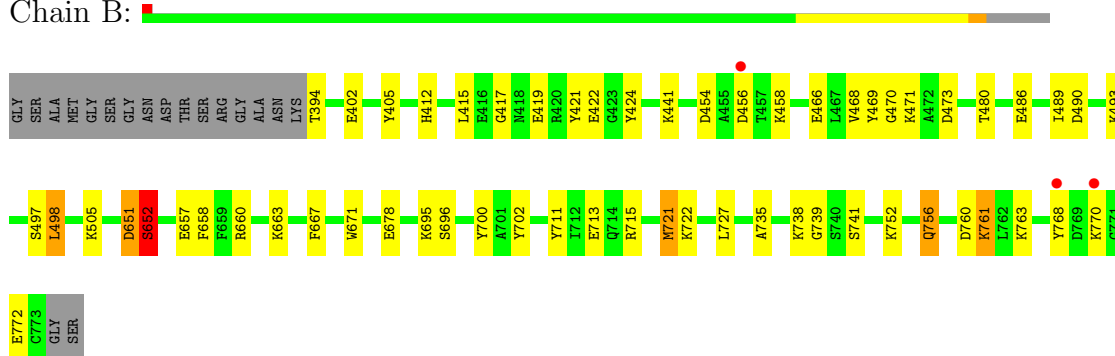
- Molecule 1: Glutamate receptor 2

Chain A:



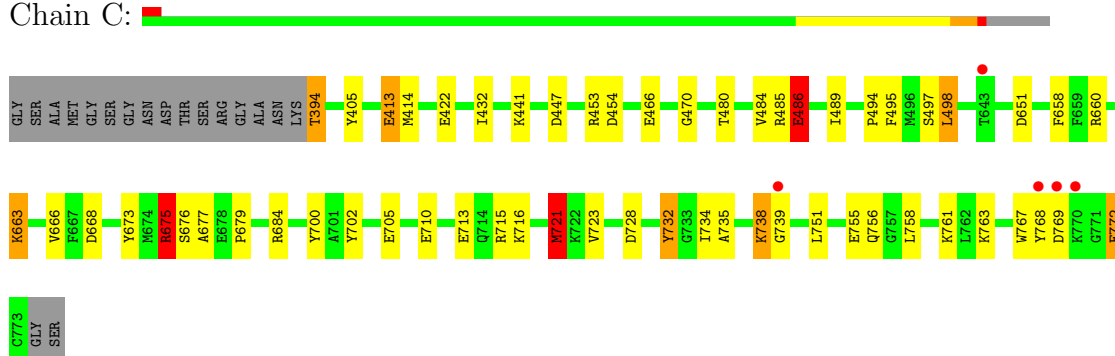
- Molecule 1: Glutamate receptor 2

Chain B:



- Molecule 1: Glutamate receptor 2

Chain C:



4 Data and refinement statistics

Property	Value	Source
Space group	P 21 21 2	Depositor
Cell constants a, b, c, α , β , γ	114.75Å 164.54Å 47.46Å 90.00° 90.00° 90.00°	Depositor
Resolution (Å)	94.07 – 1.50 41.11 – 1.50	Depositor EDS
% Data completeness (in resolution range)	98.1 (94.07-1.50) 98.1 (41.11-1.50)	Depositor EDS
R_{merge}	0.07	Depositor
R_{sym}	(Not available)	Depositor
$\langle I/\sigma(I) \rangle$ ¹	3.79 (at 1.50Å)	Xtriage
Refinement program	REFMAC 5.2.0019	Depositor
R, R_{free}	0.169 , 0.203 0.179 , 0.211	Depositor DCC
R_{free} test set	7111 reflections (5.29%)	DCC
Wilson B-factor (Å ²)	14.9	Xtriage
Anisotropy	0.047	Xtriage
Bulk solvent k_{sol} (e/Å ³), B_{sol} (Å ²)	0.38 , 47.2	EDS
Estimated twinning fraction	No twinning to report.	Xtriage
L-test for twinning	$\langle L \rangle = 0.50$, $\langle L^2 \rangle = 0.34$	Xtriage
Outliers	0 of 141629 reflections	Xtriage
F_o, F_c correlation	0.96	EDS
Total number of atoms	7405	wwPDB-VP
Average B, all atoms (Å ²)	20.0	wwPDB-VP

Xtriage's analysis on translational NCS is as follows: *The largest off-origin peak in the Patterson function is 10.64% of the height of the origin peak. No significant pseudotranslation is detected.*

¹Intensities estimated from amplitudes.

5 Model quality ⓘ

5.1 Standard geometry ⓘ

Bond lengths and bond angles in the following residue types are not validated in this section: ZN, 1YV

The Z score for a bond length (or angle) is the number of standard deviations the observed value is removed from the expected value. A bond length (or angle) with $|Z| > 5$ is considered an outlier worth inspection. RMSZ is the root-mean-square of all Z scores of the bond lengths (or angles).

Mol	Chain	Bond lengths		Bond angles	
		RMSZ	# $ Z > 5$	RMSZ	# $ Z > 5$
1	A	1.76	38/2054 (1.9%)	1.49	21/2762 (0.8%)
1	B	1.73	35/2045 (1.7%)	1.55	28/2751 (1.0%)
1	C	1.61	21/2044 (1.0%)	1.39	19/2749 (0.7%)
All	All	1.70	94/6143 (1.5%)	1.48	68/8262 (0.8%)

Chiral center outliers are detected by calculating the chiral volume of a chiral center and verifying if the center is modelled as a planar moiety or with the opposite hand. A planarity outlier is detected by checking planarity of atoms in a peptide group, atoms in a mainchain group or atoms of a sidechain that are expected to be planar.

Mol	Chain	#Chirality outliers	#Planarity outliers
1	A	0	1

The worst 5 of 94 bond length outliers are listed below:

Mol	Chain	Res	Type	Atoms	Z	Observed(Å)	Ideal(Å)
1	A	710	GLU	CD-OE1	14.22	1.41	1.25
1	A	710	GLU	CG-CD	12.74	1.71	1.51
1	B	678	GLU	CD-OE1	11.04	1.37	1.25
1	B	738	LYS	CB-CG	-10.00	1.25	1.52
1	B	696	SER	CB-OG	9.85	1.55	1.42

The worst 5 of 68 bond angle outliers are listed below:

Mol	Chain	Res	Type	Atoms	Z	Observed(°)	Ideal(°)
1	C	660	ARG	NE-CZ-NH1	13.25	126.92	120.30
1	B	660	ARG	NE-CZ-NH1	13.11	126.85	120.30
1	B	678	GLU	OE1-CD-OE2	-12.74	108.01	123.30
1	A	660	ARG	NE-CZ-NH1	12.31	126.45	120.30
1	C	675	ARG	NE-CZ-NH1	11.34	125.97	120.30

There are no chirality outliers.

All (1) planarity outliers are listed below:

Mol	Chain	Res	Type	Group
1	A	443	THR	Mainchain

5.2 Close contacts ⓘ

In the following table, the Non-H and H(model) columns list the number of non-hydrogen atoms and hydrogen atoms in the chain respectively. The H(added) column lists the number of hydrogens added by MolProbity. The Clashes column lists the number of clashes within the asymmetric unit, and the number in parentheses is this value normalized per 1000 atoms of the molecule in the chain. The Symm-Clashes column gives symmetry related clashes, in the same way as for the Clashes column.

Mol	Chain	Non-H	H(model)	H(added)	Clashes	Symm-Clashes
1	A	2018	0	2050	48	0
1	B	2009	0	2037	36	0
1	C	2008	0	2033	52	0
2	A	10	0	5	1	0
2	B	10	0	5	1	0
2	C	10	0	5	1	0
3	B	3	0	0	0	0
3	C	2	0	0	1	0
4	B	24	0	22	3	0
4	C	48	0	44	6	0
5	A	415	0	0	26	0
5	B	475	0	0	29	0
5	C	373	0	0	28	0
All	All	7405	0	6201	138	0

Clashscore is defined as the number of clashes calculated for the entry per 1000 atoms (including hydrogens) of the entry. The overall clashscore for this entry is 11.

The worst 5 of 138 close contacts within the same asymmetric unit are listed below.

Atom-1	Atom-2	Distance(Å)	Clash(Å)
1:B:761:LYS:CE	1:B:761:LYS:NZ	1.68	1.56
4:B:805:1YV:H4	5:B:1252:HOH:O	1.12	1.25
1:A:770:LYS:HG2	5:A:1291:HOH:O	1.37	1.20
1:C:677:ALA:CA	5:C:1266:HOH:O	1.92	1.17
1:A:652:SER:N	5:A:1302:HOH:O	1.77	1.04

There are no symmetry-related clashes.

5.3 Torsion angles

5.3.1 Protein backbone ⓘ

In the following table, the Percentiles column shows the percent Ramachandran outliers of the chain as a percentile score with respect to all X-ray entries followed by that with respect to entries of similar resolution. The Analysed column shows the number of residues for which the backbone conformation was analysed, and the total number of residues.

Mol	Chain	Analysed	Favoured	Allowed	Outliers	Percentiles	
1	A	256/275 (93%)	254 (99%)	2 (1%)	0	100	100
1	B	255/275 (93%)	251 (98%)	4 (2%)	0	100	100
1	C	255/275 (93%)	249 (98%)	6 (2%)	0	100	100
All	All	766/825 (93%)	754 (98%)	12 (2%)	0	100	100

There are no Ramachandran outliers to report.

5.3.2 Protein sidechains ⓘ

In the following table, the Percentiles column shows the percent sidechain outliers of the chain as a percentile score with respect to all X-ray entries followed by that with respect to entries of similar resolution. The Analysed column shows the number of residues for which the sidechain conformation was analysed, and the total number of residues.

Mol	Chain	Analysed	Rotameric	Outliers	Percentiles	
1	A	217/227 (96%)	214 (99%)	3 (1%)	78	51
1	B	216/227 (95%)	214 (99%)	2 (1%)	87	69
1	C	216/227 (95%)	211 (98%)	5 (2%)	63	26
All	All	649/681 (95%)	639 (98%)	10 (2%)	76	47

5 of 10 residues with a non-rotameric sidechain are listed below:

Mol	Chain	Res	Type
1	B	652	SER
1	C	413	GLU
1	C	498	LEU
1	B	498	LEU
1	C	486	GLU

Some sidechains can be flipped to improve hydrogen bonding and reduce clashes. All (1) such sidechains are listed below:

Mol	Chain	Res	Type
1	B	744	ASN

5.3.3 RNA ⓘ

There are no RNA chains in this entry.

5.4 Non-standard residues in protein, DNA, RNA chains ⓘ

There are no non-standard protein/DNA/RNA residues in this entry.

5.5 Carbohydrates ⓘ

There are no carbohydrates in this entry.

5.6 Ligand geometry ⓘ

Of 11 ligands modelled in this entry, 5 are monoatomic - leaving 6 for Mogul analysis.

In the following table, the Counts columns list the number of bonds (or angles) for which Mogul statistics could be retrieved, the number of bonds (or angles) that are observed in the model and the number of bonds (or angles) that are defined in the chemical component dictionary. The Link column lists molecule types, if any, to which the group is linked. The Z score for a bond length (or angle) is the number of standard deviations the observed value is removed from the expected value. A bond length (or angle) with $|Z| > 2$ is considered an outlier worth inspection. RMSZ is the root-mean-square of all Z scores of the bond lengths (or angles).

Mol	Type	Chain	Res	Link	Bond lengths			Bond angles		
					Counts	RMSZ	$\# Z > 2$	Counts	RMSZ	$\# Z > 2$
2	GLU	A	801	-	9,9,9	1.04	1 (11%)	11,11,11	1.31	2 (18%)
2	GLU	B	804	-	9,9,9	1.10	0	11,11,11	1.37	2 (18%)
4	1YV	B	805	-	25,25,25	1.87	5 (20%)	35,35,35	1.75	7 (20%)
2	GLU	C	803	-	9,9,9	1.69	3 (33%)	11,11,11	1.97	3 (27%)
4	1YV	C	804[A]	-	25,25,25	1.73	4 (16%)	35,35,35	1.79	4 (11%)
4	1YV	C	804[B]	-	25,25,25	2.00	2 (8%)	35,35,35	1.82	6 (17%)

In the following table, the Chirals column lists the number of chiral outliers, the number of chiral centers analysed, the number of these observed in the model and the number defined in the chemical component dictionary. Similar counts are reported in the Torsion and Rings columns. '-' means no outliers of that kind were identified.

Mol	Type	Chain	Res	Link	Chirals	Torsions	Rings
2	GLU	A	801	-	-	0/9/9/9	0/0/0/0
2	GLU	B	804	-	-	0/9/9/9	0/0/0/0
4	1YV	B	805	-	-	0/22/22/22	0/2/2/2
2	GLU	C	803	-	-	0/9/9/9	0/0/0/0
4	1YV	C	804[A]	-	-	0/22/22/22	0/2/2/2
4	1YV	C	804[B]	-	-	0/22/22/22	0/2/2/2

The worst 5 of 15 bond length outliers are listed below:

Mol	Chain	Res	Type	Atoms	Z	Observed(Å)	Ideal(Å)
4	C	804[B]	1YV	O23-S24	6.86	1.50	1.44
4	B	805	1YV	C14-C13	-6.11	1.28	1.44
4	C	804[B]	1YV	C14-C13	-5.75	1.29	1.44
4	C	804[A]	1YV	C14-C13	-4.75	1.31	1.44
4	C	804[A]	1YV	O23-S24	4.72	1.48	1.44

The worst 5 of 24 bond angle outliers are listed below:

Mol	Chain	Res	Type	Atoms	Z	Observed(°)	Ideal(°)
4	C	804[B]	1YV	O22-S24-O23	-6.88	107.07	120.33
4	C	804[A]	1YV	O22-S24-O23	-5.74	109.26	120.33
4	B	805	1YV	C10-C17-C11	-4.60	112.23	118.33
4	C	804[A]	1YV	O22-S24-C18	4.54	114.58	108.04
4	C	804[A]	1YV	C19-C12-N21	4.35	119.39	112.21

There are no chirality outliers.

There are no torsion outliers.

There are no ring outliers.

5.7 Other polymers ⓘ

There are no such residues in this entry.

5.8 Polymer linkage issues

There are no chain breaks in this entry.

6 Fit of model and data ⓘ

6.1 Protein, DNA and RNA chains ⓘ

In the following table, the column labelled ‘#RSRZ > 2’ contains the number (and percentage) of RSRZ outliers, followed by percent RSRZ outliers for the chain as percentile scores relative to all X-ray entries and entries of similar resolution. The OWAB column contains the minimum, median, 95th percentile and maximum values of the occupancy-weighted average B-factor per residue. The column labelled ‘Q < 0.9’ lists the number of (and percentage) of residues with an average occupancy less than 0.9.

Mol	Chain	Analysed	<RSRZ>	#RSRZ>2	OWAB(Å ²)	Q<0.9
1	A	258/275 (93%)	-0.09	5 (1%) 64 71	8, 15, 29, 49	0
1	B	257/275 (93%)	-0.21	3 (1%) 75 82	7, 13, 27, 46	0
1	C	257/275 (93%)	0.01	5 (1%) 64 71	9, 17, 33, 45	0
All	All	772/825 (93%)	-0.10	13 (1%) 67 74	7, 15, 31, 49	0

The worst 5 of 13 RSRZ outliers are listed below:

Mol	Chain	Res	Type	RSRZ
1	C	770	LYS	6.2
1	A	456	ASP	4.9
1	B	768	TYR	4.6
1	B	456	ASP	3.8
1	B	770	LYS	3.1

6.2 Non-standard residues in protein, DNA, RNA chains ⓘ

There are no non-standard protein/DNA/RNA residues in this entry.

6.3 Carbohydrates ⓘ

There are no carbohydrates in this entry.

6.4 Ligands ⓘ

In the following table, the Atoms column lists the number of modelled atoms in the group and the number defined in the chemical component dictionary. LLDF column lists the quality of electron density of the group with respect to its neighbouring residues in protein, DNA or RNA chains. The B-factors column lists the minimum, median, 95th percentile and maximum values of B factors

of atoms in the group. The column labelled 'Q< 0.9' lists the number of atoms with occupancy less than 0.9.

Mol	Type	Chain	Res	Atoms	RSR	LLDF	B-factors(\AA^2)	Q<0.9
4	1YV	C	804[B]	24/24	0.21	8.58	8,15,23,27	24
4	1YV	C	804[A]	24/24	0.21	6.49	9,14,19,25	24
4	1YV	B	805	24/24	0.15	5.12	9,13,23,25	24
3	ZN	C	802	1/1	0.10	0.10	34,34,34,34	0
2	GLU	C	803	10/10	0.08	-0.26	8,12,14,15	0
2	GLU	B	804	10/10	0.07	-0.60	7,8,10,10	0
2	GLU	A	801	10/10	0.07	-0.96	8,10,13,14	0
3	ZN	C	801	1/1	0.04	-1.77	19,19,19,19	0
3	ZN	B	801	1/1	0.04	-2.00	14,14,14,14	0
3	ZN	B	802	1/1	0.04	-2.02	18,18,18,18	0
3	ZN	B	803	1/1	0.04	-3.09	14,14,14,14	0

6.5 Other polymers ⓘ

There are no such residues in this entry.