



Full wwPDB X-ray Structure Validation Report

Feb 27, 2014 – 04:34 PM GMT

PDB ID : 1M1P
Title : P21 crystal structure of the tetraheme cytochrome c3 from *Shewanella oneidensis* MR1
Authors : Leys, D.; Meyer, T.E.; Tsapin, A.I.; Nealson, K.H.; Cusanovich, M.A.; Van Beeumen, J.J.
Deposited on : 2002-06-20
Resolution : 1.55 Å(reported)

This is a full wwPDB validation report for a publicly released PDB entry.
We welcome your comments at validation@mail.wwpdb.org
A user guide is available at <http://wwpdb.org/ValidationPDFNotes.html>

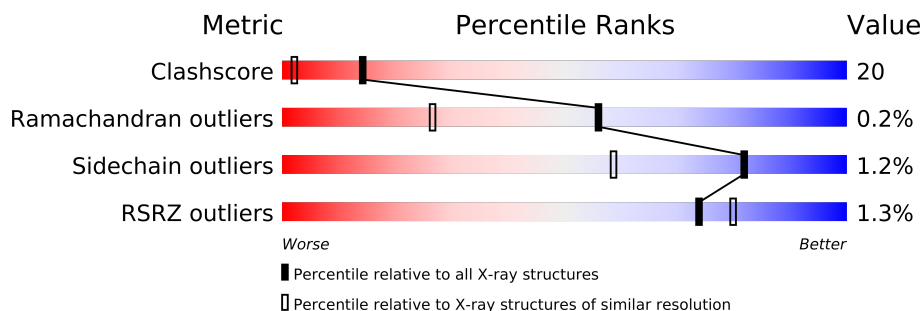
The following versions of software and data (see [references](#)) were used in the production of this report:

MolProbity : 4.02b-467
Mogul : 1.15 2013
Xtriage (Phenix) : dev-1323
EDS : stable22639
Percentile statistics : 21963
Refmac : 5.8.0049
CCP4 : 6.3.0 (Settle)
Ideal geometry (proteins) : Engh & Huber (2001)
Ideal geometry (DNA, RNA) : Parkinson et. al. (1996)
Validation Pipeline (wwPDB-VP) : stable22683

1 Overall quality at a glance

The reported resolution of this entry is 1.55 Å.

Percentile scores (ranging between 0-100) for global validation metrics of the entry are shown in the following graphic. The table shows the number of entries on which the scores are based.



Metric	Whole archive (#Entries)	Similar resolution (#Entries, resolution range(Å))
Clashscore	79885	1249 (1.58-1.54)
Ramachandran outliers	78287	1212 (1.58-1.54)
Sidechain outliers	78261	1210 (1.58-1.54)
RSRZ outliers	66119	1117 (1.58-1.54)

The table below summarises the geometric issues observed across the polymeric chains and their fit to the electron density. The red, orange, yellow and green segments on the lower bar indicate the fraction of residues that contain outliers for ≥ 3 , 2, 1 and 0 types of geometric quality criteria. The upper red bar (where present) indicates the fraction of residues that have poor fit to the electron density.

Mol	Chain	Length	Quality of chain
1	A	91	
1	B	91	
1	C	91	
1	D	91	
1	E	91	
1	F	91	

The following table lists non-polymeric compounds that are outliers for geometric or electron-density-fit criteria:

Mol	Type	Chain	Res	Geometry	Electron density
2	SO4	C	1162	-	X
3	HEM	D	801	-	X

2 Entry composition

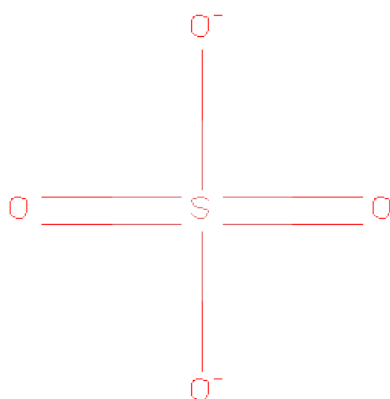
There are 4 unique types of molecules in this entry. The entry contains 5963 atoms, of which 0 are hydrogen and 0 are deuterium.

In the tables below, the ZeroOcc column contains the number of atoms modelled with zero occupancy, the AltConf column contains the number of residues with at least one atom in alternate conformation and the Trace column contains the number of residues modelled with at most 2 atoms.

- Molecule 1 is a protein called Small tetraheme cytochrome c.

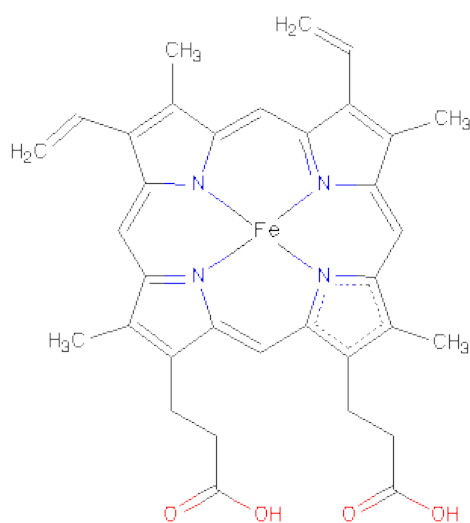
Mol	Chain	Residues	Atoms					ZeroOcc	AltConf	Trace
1	A	88	Total	C	N	O	S	0	0	1
			622	370	116	126	10			
1	B	89	Total	C	N	O	S	0	0	0
			632	374	118	130	10			
1	C	86	Total	C	N	O	S	0	0	0
			618	368	115	125	10			
1	D	86	Total	C	N	O	S	0	0	0
			613	365	113	125	10			
1	E	88	Total	C	N	O	S	0	0	0
			636	377	117	132	10			
1	F	88	Total	C	N	O	S	0	0	0
			629	373	116	130	10			

- Molecule 2 is SULFATE ION (three-letter code: SO₄) (formula: O₄S).



Mol	Chain	Residues	Atoms	ZeroOcc	AltConf
2	C	1	Total O S 5 4 1	0	0
2	F	1	Total O S 5 4 1	0	0
2	A	1	Total O S 5 4 1	0	0
2	B	1	Total O S 5 4 1	0	0

- Molecule 3 is PROTOPORPHYRIN IX CONTAINING FE (three-letter code: HEM) (formula: $C_{34}H_{32}FeN_4O_4$).



Mol	Chain	Residues	Atoms	ZeroOcc	AltConf
3	A	1	Total C Fe N O 43 34 1 4 4	0	0
3	A	1	Total C Fe N O 43 34 1 4 4	0	0
3	A	1	Total C Fe N O 43 34 1 4 4	0	0
3	A	1	Total C Fe N O 43 34 1 4 4	0	0
3	B	1	Total C Fe N O 43 34 1 4 4	0	0
3	B	1	Total C Fe N O 43 34 1 4 4	0	0
3	B	1	Total C Fe N O 43 34 1 4 4	0	0

Continued on next page...

Continued from previous page...

Mol	Chain	Residues	Atoms				ZeroOcc	AltConf	
3	B	1	Total 43	C 34	Fe 1	N 4	O 4	0	0
3	C	1	Total 43	C 34	Fe 1	N 4	O 4	0	0
3	C	1	Total 43	C 34	Fe 1	N 4	O 4	0	0
3	C	1	Total 43	C 34	Fe 1	N 4	O 4	0	0
3	C	1	Total 43	C 34	Fe 1	N 4	O 4	0	0
3	D	1	Total 43	C 34	Fe 1	N 4	O 4	0	0
3	D	1	Total 43	C 34	Fe 1	N 4	O 4	0	0
3	D	1	Total 43	C 34	Fe 1	N 4	O 4	0	0
3	D	1	Total 43	C 34	Fe 1	N 4	O 4	0	0
3	E	1	Total 43	C 34	Fe 1	N 4	O 4	0	0
3	E	1	Total 43	C 34	Fe 1	N 4	O 4	0	0
3	E	1	Total 43	C 34	Fe 1	N 4	O 4	0	0
3	E	1	Total 43	C 34	Fe 1	N 4	O 4	0	0
3	F	1	Total 43	C 34	Fe 1	N 4	O 4	0	0
3	F	1	Total 43	C 34	Fe 1	N 4	O 4	0	0
3	F	1	Total 43	C 34	Fe 1	N 4	O 4	0	0
3	F	1	Total 43	C 34	Fe 1	N 4	O 4	0	0

- Molecule 4 is water.

Mol	Chain	Residues	Atoms		ZeroOcc	AltConf
4	A	195	Total 195	O 195	0	0
4	B	198	Total 198	O 198	0	0

Continued on next page...

Continued from previous page...

Mol	Chain	Residues	Atoms		ZeroOcc	AltConf
4	C	167	Total 167	O 167	0	0
4	D	207	Total 207	O 207	0	0
4	E	215	Total 215	O 215	0	0
4	F	179	Total 179	O 179	0	0

3 Residue-property plots

These plots are drawn for all protein, RNA and DNA chains in the entry. The first graphic for a chain summarises the proportions of errors displayed in the second graphic. The second graphic shows the sequence view annotated by issues in geometry and electron density. Residues are color-coded according to the number of geometric quality criteria for which they contain at least one outlier: green = 0, yellow = 1, orange = 2 and red = 3 or more. A red dot above a residue indicates a poor fit to the electron density ($RSRZ > 2$). Stretches of 2 or more consecutive residues without any outlier are shown as a green connector. Residues present in the sample, but not in the model, are shown in grey.

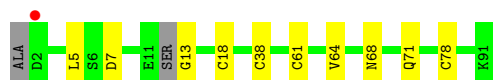
- Molecule 1: Small tetraheme cytochrome c

Chain A: 



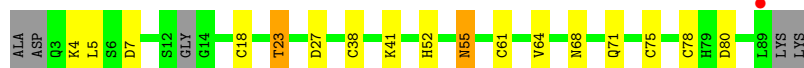
- Molecule 1: Small tetraheme cytochrome c

Chain B: 



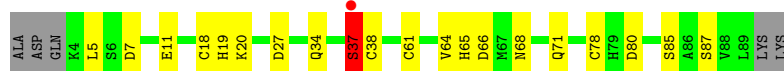
- Molecule 1: Small tetraheme cytochrome c

Chain C: 



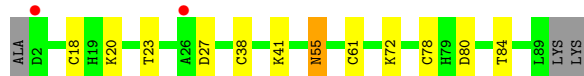
- Molecule 1: Small tetraheme cytochrome c

Chain D: 



- Molecule 1: Small tetraheme cytochrome c

Chain E: 



- Molecule 1: Small tetraheme cytochrome c

Chain F: 



4 Data and refinement statistics

Property	Value	Source
Space group	P 1 21 1	Depositor
Cell constants a, b, c, α , β , γ	93.69Å 34.01Å 108.31Å 90.00° 110.49° 90.00°	Depositor
Resolution (Å)	14.92 – 1.55 14.93 – 1.55	Depositor EDS
% Data completeness (in resolution range)	(Not available) (14.92-1.55) 94.7 (14.93-1.55)	Depositor EDS
R_{merge}	(Not available)	Depositor
R_{sym}	(Not available)	Depositor
$\langle I/\sigma(I) \rangle$ ¹	4.55 (at 1.55Å)	Xtriage
Refinement program	REFMAC 5	Depositor
R, R_{free}	0.173 , 0.211 0.176 , (Not available)	Depositor DCC
R_{free} test set	No test flags present.	DCC
Wilson B-factor (Å ²)	13.6	Xtriage
Anisotropy	0.228	Xtriage
Bulk solvent k_{sol} (e/Å ³), B_{sol} (Å ²)	0.40 , 48.6	EDS
Estimated twinning fraction	No twinning to report.	Xtriage
L-test for twinning	$\langle L \rangle = 0.50$, $\langle L^2 \rangle = 0.33$	Xtriage
Outliers	0 of 88875 reflections	Xtriage
F_o, F_c correlation	0.96	EDS
Total number of atoms	5963	wwPDB-VP
Average B, all atoms (Å ²)	20.0	wwPDB-VP

Xtriage's analysis on translational NCS is as follows: *The largest off-origin peak in the Patterson function is 14.75% of the height of the origin peak. No significant pseudotranslation is detected.*

¹Intensities estimated from amplitudes.

5 Model quality

5.1 Standard geometry

Bond lengths and bond angles in the following residue types are not validated in this section: HEM, SO4

The Z score for a bond length (or angle) is the number of standard deviations the observed value is removed from the expected value. A bond length (or angle) with $|Z| > 5$ is considered an outlier worth inspection. RMSZ is the root-mean-square of all Z scores of the bond lengths (or angles).

Mol	Chain	Bond lengths		Bond angles	
		RMSZ	# $ Z > 5$	RMSZ	# $ Z > 5$
1	A	0.58	0/635	0.80	1/856 (0.1%)
1	B	0.54	0/644	0.80	1/867 (0.1%)
1	C	0.53	0/630	0.89	3/848 (0.4%)
1	D	0.58	0/626	0.92	4/845 (0.5%)
1	E	0.53	0/649	0.87	2/873 (0.2%)
1	F	0.54	0/642	0.87	5/865 (0.6%)
All	All	0.55	0/3826	0.86	16/5154 (0.3%)

There are no bond length outliers.

All (16) bond angle outliers are listed below:

Mol	Chain	Res	Type	Atoms	Z	Observed(°)	Ideal(°)
1	F	27	ASP	CB-CG-OD2	8.22	125.70	118.30
1	E	27	ASP	CB-CG-OD2	7.50	125.05	118.30
1	C	80	ASP	CB-CG-OD2	7.44	125.00	118.30
1	D	80	ASP	CB-CG-OD2	6.94	124.55	118.30
1	E	80	ASP	CB-CG-OD2	6.49	124.14	118.30
1	D	66	ASP	CB-CG-OD2	6.37	124.03	118.30
1	C	7	ASP	CB-CG-OD2	6.05	123.74	118.30
1	F	7	ASP	CB-CG-OD2	5.65	123.39	118.30
1	F	60	ASP	CB-CG-OD2	5.50	123.25	118.30
1	D	27	ASP	CB-CG-OD2	5.46	123.21	118.30
1	C	27	ASP	CB-CG-OD2	5.45	123.20	118.30
1	F	21	ASP	CB-CG-OD2	5.31	123.08	118.30
1	A	27	ASP	CB-CG-OD2	5.31	123.08	118.30
1	B	7	ASP	CB-CG-OD2	5.30	123.07	118.30
1	F	23	THR	CB-CA-C	-5.10	97.84	111.60
1	D	37	SER	CB-CA-C	-5.08	100.44	110.10

There are no chirality outliers.

There are no planarity outliers.

5.2 Close contacts

In the following table, the Non-H and H(model) columns list the number of non-hydrogen atoms and hydrogen atoms in the chain respectively. The H(added) column lists the number of hydrogens added by MolProbity. The Clashes column lists the number of clashes within the asymmetric unit, and the number in parentheses is this value normalized per 1000 atoms of the molecule in the chain. The Symm-Clashes column gives symmetry related clashes, in the same way as for the Clashes column.

Mol	Chain	Non-H	H(model)	H(added)	Clashes	Symm-Clashes
1	A	622	0	544	25	0
1	B	632	0	542	23	0
1	C	618	0	544	31	0
1	D	613	0	531	35	0
1	E	636	0	558	25	0
1	F	629	0	547	23	0
2	A	5	0	0	0	0
2	B	5	0	0	0	0
2	C	5	0	0	0	0
2	F	5	0	0	0	0
3	A	172	0	120	22	0
3	B	172	0	120	20	0
3	C	172	0	120	24	0
3	D	172	0	120	20	0
3	E	172	0	120	19	1
3	F	172	0	120	22	0
4	A	195	0	0	0	0
4	B	198	0	0	1	0
4	C	167	0	0	3	0
4	D	207	0	0	6	1
4	E	215	0	0	8	0
4	F	179	0	0	0	0
All	All	5963	0	3986	163	1

Clashscore is defined as the number of clashes calculated for the entry per 1000 atoms (including hydrogens) of the entry. The overall clashscore for this entry is 20.

All (163) close contacts within the same asymmetric unit are listed below.

Atom-1	Atom-2	Distance(Å)	Clash(Å)
1:C:75:CYS:SG	3:C:804:HEM:HAB	1.58	1.44
1:A:75:CYS:SG	3:A:804:HEM:HAB	1.58	1.41
1:C:78:CYS:SG	3:C:804:HEM:CAC	2.11	1.39

Continued on next page...

Continued from previous page...

Atom-1	Atom-2	Distance(Å)	Clash(Å)
1:E:61:CYS:SG	3:E:803:HEM:CAC	2.12	1.38
1:C:78:CYS:SG	3:C:804:HEM:HAC	1.63	1.36
1:D:18:CYS:SG	3:D:801:HEM:CAC	2.14	1.36
1:A:38:CYS:SG	3:A:802:HEM:CAC	2.15	1.35
1:F:75:CYS:SG	3:F:804:HEM:HAB	1.64	1.35
1:F:61:CYS:SG	3:F:803:HEM:CAC	2.13	1.35
1:C:61:CYS:SG	3:C:803:HEM:CAC	2.15	1.35
1:A:18:CYS:SG	3:A:801:HEM:CAC	2.13	1.35
1:A:61:CYS:SG	3:A:803:HEM:CAC	2.17	1.32
1:B:78:CYS:SG	3:B:804:HEM:HAC	1.68	1.32
1:F:18:CYS:SG	3:F:801:HEM:CAC	2.18	1.31
1:F:78:CYS:SG	3:F:804:HEM:CAC	2.18	1.30
1:B:18:CYS:SG	3:B:801:HEM:CAC	2.18	1.30
1:F:78:CYS:SG	3:F:804:HEM:HAC	1.73	1.29
1:D:38:CYS:SG	3:D:802:HEM:CAC	2.22	1.28
1:E:18:CYS:SG	3:E:801:HEM:CAC	2.21	1.28
1:E:78:CYS:SG	3:E:804:HEM:HAC	1.71	1.26
1:B:61:CYS:HG	3:B:803:HEM:CAC	1.45	1.25
1:D:61:CYS:HG	3:D:803:HEM:CAC	1.44	1.25
1:D:87:SER:CB	4:D:824:HOH:O	1.80	1.24
1:C:18:CYS:SG	3:C:801:HEM:CAC	2.25	1.23
1:D:37:SER:CA	4:D:986:HOH:O	1.84	1.23
1:D:78:CYS:SG	3:D:804:HEM:HAC	1.68	1.22
1:D:38:CYS:SG	3:D:802:HEM:HAC	1.79	1.21
1:A:78:CYS:SG	3:A:804:HEM:HAC	1.74	1.21
1:E:61:CYS:SG	3:E:803:HEM:HAC	1.78	1.20
1:E:38:CYS:SG	3:E:802:HEM:CAC	2.32	1.18
1:D:18:CYS:SG	3:D:801:HEM:HAC	1.81	1.18
1:F:38:CYS:SG	3:F:802:HEM:CAC	2.32	1.17
1:D:61:CYS:SG	3:D:803:HEM:HAC	1.76	1.17
1:F:61:CYS:SG	3:F:803:HEM:HAC	1.78	1.16
1:A:18:CYS:SG	3:A:801:HEM:HAC	1.81	1.16
1:B:61:CYS:SG	3:B:803:HEM:HAC	1.78	1.15
1:C:61:CYS:SG	3:C:803:HEM:HAC	1.82	1.15
1:D:37:SER:CB	4:D:986:HOH:O	1.92	1.14
1:C:38:CYS:SG	3:C:802:HEM:CAC	2.36	1.12
1:E:84:THR:HG22	4:E:860:HOH:O	0.97	1.12
1:B:38:CYS:SG	3:B:802:HEM:CAC	2.44	1.04
1:F:18:CYS:SG	3:F:801:HEM:HAC	1.94	1.04
1:A:61:CYS:SG	3:A:803:HEM:HAC	1.95	1.04
1:F:75:CYS:HG	3:F:804:HEM:CAB	1.56	1.03
1:D:34:GLN:O	1:D:37:SER:CB	2.07	1.03

Continued on next page...

Continued from previous page...

Atom-1	Atom-2	Distance(Å)	Clash(Å)
1:C:61:CYS:HG	3:C:803:HEM:CAC	1.64	1.01
1:B:18:CYS:SG	3:B:801:HEM:HAC	1.99	1.01
1:A:38:CYS:SG	3:A:802:HEM:HAC	1.98	1.00
1:F:61:CYS:HG	3:F:803:HEM:HAC	1.24	0.99
1:E:18:CYS:SG	3:E:801:HEM:HAC	2.01	0.97
1:D:34:GLN:O	1:D:37:SER:HB2	1.64	0.96
1:D:65:HIS:O	4:D:970:HOH:O	1.85	0.95
1:C:18:CYS:SG	3:C:801:HEM:HAC	2.05	0.94
1:D:37:SER:HA	4:D:986:HOH:O	1.47	0.93
1:E:38:CYS:HG	3:E:802:HEM:CAC	1.81	0.92
1:C:78:CYS:HG	3:C:804:HEM:HAC	1.08	0.89
1:C:38:CYS:SG	3:C:802:HEM:HAC	2.14	0.88
1:D:34:GLN:O	1:D:37:SER:HB3	1.73	0.87
1:E:84:THR:CG2	4:E:860:HOH:O	1.67	0.87
1:E:55:ASN:HB2	4:E:952:HOH:O	1.74	0.86
1:A:18:CYS:HG	3:A:801:HEM:HAC	1.41	0.82
1:F:78:CYS:HG	3:F:804:HEM:HAC	1.42	0.81
1:D:18:CYS:HG	3:D:801:HEM:HAC	1.42	0.81
1:B:38:CYS:HG	3:B:802:HEM:CAC	1.92	0.78
1:D:78:CYS:SG	3:D:804:HEM:C3C	2.82	0.72
1:B:5:LEU:HD23	1:B:64:VAL:HG12	1.70	0.72
1:B:78:CYS:SG	3:B:804:HEM:C3C	2.82	0.72
1:E:78:CYS:SG	3:E:804:HEM:CBC	2.78	0.71
1:F:38:CYS:SG	3:F:802:HEM:CBC	2.77	0.71
1:A:38:CYS:SG	3:A:802:HEM:CBC	2.77	0.70
1:B:61:CYS:HG	3:B:803:HEM:CBC	2.02	0.70
1:A:38:CYS:SG	3:A:802:HEM:C3C	2.85	0.70
1:E:38:CYS:SG	3:E:802:HEM:HAC	2.32	0.70
1:E:78:CYS:SG	3:E:804:HEM:C3C	2.85	0.70
1:F:38:CYS:SG	3:F:802:HEM:HAC	2.32	0.70
1:B:61:CYS:SG	3:B:803:HEM:C3C	2.86	0.69
1:D:61:CYS:HG	3:D:803:HEM:CBC	2.03	0.69
1:C:75:CYS:SG	3:C:804:HEM:C3B	2.85	0.69
1:C:78:CYS:SG	3:C:804:HEM:C3C	2.85	0.69
1:E:61:CYS:SG	3:E:803:HEM:C3C	2.85	0.69
1:F:61:CYS:SG	3:F:803:HEM:C3C	2.86	0.69
1:B:61:CYS:SG	3:B:803:HEM:CBC	2.81	0.69
1:B:18:CYS:SG	3:B:801:HEM:CBC	2.81	0.68
1:D:78:CYS:SG	3:D:804:HEM:CBC	2.79	0.68
1:E:38:CYS:SG	3:E:802:HEM:CBC	2.82	0.68
1:C:61:CYS:SG	3:C:803:HEM:C3C	2.86	0.67
1:E:38:CYS:SG	3:E:802:HEM:C3C	2.87	0.67

Continued on next page...

Continued from previous page...

Atom-1	Atom-2	Distance(Å)	Clash(Å)
1:F:18:CYS:SG	3:F:801:HEM:C3C	2.87	0.67
1:A:78:CYS:SG	3:A:804:HEM:C3C	2.86	0.67
1:A:61:CYS:SG	3:A:803:HEM:CB	2.82	0.67
1:A:18:CYS:SG	3:A:801:HEM:C3C	2.87	0.66
1:D:61:CYS:SG	3:D:803:HEM:C3C	2.86	0.66
1:A:75:CYS:SG	3:A:804:HEM:C3B	2.86	0.66
1:D:38:CYS:SG	3:D:802:HEM:C3C	2.89	0.66
1:E:18:CYS:SG	3:E:801:HEM:C3C	2.88	0.66
1:A:61:CYS:SG	3:A:803:HEM:C3C	2.89	0.66
1:F:78:CYS:SG	3:F:804:HEM:C3C	2.89	0.66
1:D:61:CYS:SG	3:D:803:HEM:CB	2.81	0.65
1:C:41:LYS:HD3	4:C:1232:HOH:O	1.95	0.65
1:A:78:CYS:SG	3:A:804:HEM:CB	2.84	0.65
1:D:18:CYS:SG	3:D:801:HEM:C3C	2.89	0.65
1:B:18:CYS:SG	3:B:801:HEM:C3C	2.89	0.65
1:E:18:CYS:SG	3:E:801:HEM:CB	2.84	0.64
1:A:75:CYS:SG	3:A:804:HEM:CBB	2.82	0.64
1:B:38:CYS:SG	3:B:802:HEM:CB	2.85	0.64
1:A:52:HIS:HA	1:A:55:ASN:HD21	1.63	0.63
1:A:75:CYS:CB	3:A:804:HEM:HAB	2.29	0.62
1:F:18:CYS:SG	3:F:801:HEM:CB	2.84	0.62
1:C:75:CYS:SG	3:C:804:HEM:CBB	2.84	0.62
1:C:38:CYS:SG	3:C:802:HEM:C3C	2.93	0.62
1:C:18:CYS:SG	3:C:801:HEM:CB	2.86	0.62
1:C:5:LEU:HD23	1:C:64:VAL:HG12	1.82	0.62
1:A:18:CYS:SG	3:A:801:HEM:CB	2.86	0.62
1:B:78:CYS:SG	3:B:804:HEM:CB	2.86	0.61
1:F:38:CYS:SG	3:F:802:HEM:C3C	2.94	0.61
1:E:72:LYS:HD3	4:E:887:HOH:O	2.00	0.61
1:C:18:CYS:SG	3:C:801:HEM:C3C	2.94	0.61
1:B:38:CYS:SG	3:B:802:HEM:C3C	2.94	0.60
1:A:61:CYS:HG	3:A:803:HEM:HAC	1.66	0.60
1:D:18:CYS:SG	3:D:801:HEM:CB	2.88	0.59
1:E:61:CYS:SG	3:E:803:HEM:CB	2.88	0.59
1:C:75:CYS:CB	3:C:804:HEM:HAB	2.32	0.59
1:F:75:CYS:CB	3:F:804:HEM:HAB	2.32	0.58
3:E:801:HEM:HBD2	4:E:978:HOH:O	2.04	0.57
1:F:75:CYS:SG	3:F:804:HEM:CBB	2.87	0.56
1:F:5:LEU:HD23	1:F:64:VAL:HG12	1.88	0.56
1:C:61:CYS:SG	3:C:803:HEM:CB	2.90	0.55
1:E:38:CYS:HG	3:E:802:HEM:CB	2.20	0.54
1:C:52:HIS:HA	1:C:55:ASN:HD21	1.75	0.52

Continued on next page...

Continued from previous page...

Atom-1	Atom-2	Distance(Å)	Clash(Å)
1:D:85:SER:HB3	3:D:803:HEM:HMD3	1.92	0.51
1:D:5:LEU:HD23	1:D:64:VAL:HG12	1.93	0.49
1:B:38:CYS:HG	3:B:802:HEM:CBC	2.24	0.49
1:C:68:ASN:H	1:C:71:GLN:NE2	2.11	0.49
1:C:4:LYS:HG3	4:C:1283:HOH:O	2.12	0.48
1:A:5:LEU:HD23	1:A:64:VAL:HG12	1.95	0.48
1:D:37:SER:HB3	1:D:38:CYS:H	1.40	0.48
1:B:13:GLY:N	4:B:1227:HOH:O	2.46	0.47
1:C:23:THR:HG23	4:C:1260:HOH:O	2.14	0.47
1:B:5:LEU:HD11	3:B:802:HEM:HBA1	1.97	0.47
1:C:61:CYS:HG	3:C:803:HEM:CBC	2.22	0.46
1:F:75:CYS:SG	3:F:804:HEM:C3B	2.87	0.46
1:D:68:ASN:H	1:D:71:GLN:HE21	1.62	0.46
1:A:64:VAL:HG21	3:A:801:HEM:CHD	2.45	0.46
1:D:20:LYS:HB3	1:D:20:LYS:HE3	1.75	0.46
1:A:52:HIS:HA	1:A:55:ASN:ND2	2.30	0.44
1:E:41:LYS:HD2	4:E:967:HOH:O	2.18	0.43
1:C:68:ASN:H	1:C:71:GLN:HE21	1.63	0.43
1:D:78:CYS:CB	3:D:804:HEM:C3C	3.01	0.43
1:F:61:CYS:SG	3:F:803:HEM:CBC	2.92	0.43
1:E:23:THR:HG23	4:E:1003:HOH:O	2.18	0.43
1:D:20:LYS:NZ	4:D:915:HOH:O	2.52	0.42
1:C:78:CYS:SG	3:C:804:HEM:CBC	2.96	0.42
1:D:7:ASP:O	1:D:11:GLU:HG3	2.20	0.41
1:B:78:CYS:CB	3:B:804:HEM:C3C	3.02	0.41
1:B:68:ASN:H	1:B:71:GLN:NE2	2.18	0.41
1:E:20:LYS:HD3	4:E:921:HOH:O	2.19	0.41
1:D:68:ASN:H	1:D:71:GLN:NE2	2.19	0.41
1:D:78:CYS:HB2	3:D:804:HEM:C3C	2.56	0.41
1:C:18:CYS:HG	3:C:801:HEM:HAC	1.82	0.41
1:B:61:CYS:CB	3:B:803:HEM:C3C	3.04	0.41
1:D:19:HIS:CE1	3:D:801:HEM:ND	2.89	0.40
1:E:78:CYS:CB	3:E:804:HEM:C3C	3.03	0.40
1:C:38:CYS:HG	3:C:802:HEM:HAC	1.85	0.40

All (1) symmetry-related close contacts are listed below. The label for Atom-2 includes the symmetry operator and encoded unit-cell translations to be applied.

Atom-1	Atom-2	Distance(Å)	Clash(Å)
3:E:804:HEM:CMA	4:D:830:HOH:O[2_556]	2.08	0.12

5.3 Torsion angles

5.3.1 Protein backbone ⓘ

In the following table, the Percentiles column shows the percent Ramachandran outliers of the chain as a percentile score with respect to all X-ray entries followed by that with respect to entries of similar resolution. The Analysed column shows the number of residues for which the backbone conformation was analysed, and the total number of residues.

Mol	Chain	Analysed	Favoured	Allowed	Outliers	Percentiles	
1	A	86/91 (94%)	85 (99%)	1 (1%)	0	100	100
1	B	85/91 (93%)	83 (98%)	2 (2%)	0	100	100
1	C	82/91 (90%)	80 (98%)	2 (2%)	0	100	100
1	D	84/91 (92%)	82 (98%)	1 (1%)	1 (1%)	19	2
1	E	86/91 (94%)	85 (99%)	1 (1%)	0	100	100
1	F	86/91 (94%)	86 (100%)	0	0	100	100
All	All	509/546 (93%)	501 (98%)	7 (1%)	1 (0%)	56	26

All (1) Ramachandran outliers are listed below:

Mol	Chain	Res	Type
1	D	37	SER

5.3.2 Protein sidechains ⓘ

In the following table, the Percentiles column shows the percent sidechain outliers of the chain as a percentile score with respect to all X-ray entries followed by that with respect to entries of similar resolution. The Analysed column shows the number of residues for which the sidechain conformation was analysed, and the total number of residues.

Mol	Chain	Analysed	Rotameric	Outliers	Percentiles	
1	A	66/74 (89%)	65 (98%)	1 (2%)	76	49
1	B	67/74 (90%)	67 (100%)	0	100	100
1	C	67/74 (90%)	65 (97%)	2 (3%)	53	18
1	D	65/74 (88%)	65 (100%)	0	100	100
1	E	70/74 (95%)	69 (99%)	1 (1%)	78	52
1	F	68/74 (92%)	67 (98%)	1 (2%)	76	49
All	All	403/444 (91%)	398 (99%)	5 (1%)	82	59

All (5) residues with a non-rotameric sidechain are listed below:

Mol	Chain	Res	Type
1	A	55	ASN
1	C	23	THR
1	C	55	ASN
1	E	55	ASN
1	F	23	THR

Some sidechains can be flipped to improve hydrogen bonding and reduce clashes. All (7) such sidechains are listed below:

Mol	Chain	Res	Type
1	A	55	ASN
1	B	71	GLN
1	C	55	ASN
1	C	71	GLN
1	D	71	GLN
1	E	71	GLN
1	F	71	GLN

5.3.3 RNA ⓘ

There are no RNA chains in this entry.

5.4 Non-standard residues in protein, DNA, RNA chains ⓘ

There are no non-standard protein/DNA/RNA residues in this entry.

5.5 Carbohydrates ⓘ

There are no carbohydrates in this entry.

5.6 Ligand geometry ⓘ

28 ligands are modelled in this entry.

In the following table, the Counts columns list the number of bonds (or angles) for which Mogul statistics could be retrieved, the number of bonds (or angles) that are observed in the model and the number of bonds (or angles) that are defined in the chemical component dictionary. The Link column lists molecule types, if any, to which the group is linked. The Z score for a bond length (or angle) is the number of standard deviations the observed value is removed from the expected

value. A bond length (or angle) with $|Z| > 2$ is considered an outlier worth inspection. RMSZ is the root-mean-square of all Z scores of the bond lengths (or angles).

Mol	Type	Chain	Res	Link	Bond lengths			Bond angles		
					Counts	RMSZ	# $ Z > 2$	Counts	RMSZ	# $ Z > 2$
2	SO4	A	1164	-	4,4,4	0.22	0	6,6,6	0.40	0
3	HEM	A	801	1	49,50,50	2.11	15 (30%)	46,82,82	2.13	12 (26%)
3	HEM	A	802	1	49,50,50	2.06	11 (22%)	46,82,82	2.18	12 (26%)
3	HEM	A	803	1	49,50,50	1.99	12 (24%)	46,82,82	1.77	12 (26%)
3	HEM	A	804	1	49,50,50	2.26	12 (24%)	46,82,82	1.85	10 (21%)
2	SO4	B	1165	-	4,4,4	0.62	0	6,6,6	0.32	0
3	HEM	B	801	1	49,50,50	2.34	13 (26%)	46,82,82	2.10	10 (21%)
3	HEM	B	802	1	49,50,50	2.19	14 (28%)	46,82,82	2.13	13 (28%)
3	HEM	B	803	1	49,50,50	2.21	14 (28%)	46,82,82	2.04	12 (26%)
3	HEM	B	804	1	49,50,50	2.00	10 (20%)	46,82,82	1.86	9 (19%)
2	SO4	C	1162	-	4,4,4	0.25	0	6,6,6	0.50	0
3	HEM	C	801	1	49,50,50	2.07	11 (22%)	46,82,82	2.04	13 (28%)
3	HEM	C	802	1	49,50,50	2.20	18 (36%)	46,82,82	2.37	15 (32%)
3	HEM	C	803	1	49,50,50	2.76	14 (28%)	46,82,82	2.50	13 (28%)
3	HEM	C	804	1	49,50,50	2.04	12 (24%)	46,82,82	1.87	7 (15%)
3	HEM	D	801	1	49,50,50	2.02	11 (22%)	46,82,82	2.33	17 (36%)
3	HEM	D	802	1	49,50,50	2.39	13 (26%)	46,82,82	2.25	11 (23%)
3	HEM	D	803	1	49,50,50	2.31	15 (30%)	46,82,82	2.07	10 (21%)
3	HEM	D	804	1	49,50,50	2.09	14 (28%)	46,82,82	2.01	12 (26%)
3	HEM	E	801	1	49,50,50	2.24	12 (24%)	46,82,82	1.82	9 (19%)
3	HEM	E	802	1	49,50,50	2.39	13 (26%)	46,82,82	2.25	12 (26%)
3	HEM	E	803	1	49,50,50	2.05	14 (28%)	46,82,82	2.32	14 (30%)
3	HEM	E	804	1	49,50,50	2.06	12 (24%)	46,82,82	2.09	10 (21%)
2	SO4	F	1163	-	4,4,4	0.18	0	6,6,6	0.31	0
3	HEM	F	801	1	49,50,50	1.95	9 (18%)	46,82,82	1.82	9 (19%)
3	HEM	F	802	1	49,50,50	2.14	15 (30%)	46,82,82	1.96	9 (19%)
3	HEM	F	803	1	49,50,50	2.09	12 (24%)	46,82,82	2.12	11 (23%)
3	HEM	F	804	1	49,50,50	2.14	12 (24%)	46,82,82	1.83	7 (15%)

In the following table, the Chirals column lists the number of chiral outliers, the number of chiral centers analysed, the number of these observed in the model and the number defined in the chemical component dictionary. Similar counts are reported in the Torsion and Rings columns. '-' means no outliers of that kind were identified.

Mol	Type	Chain	Res	Link	Chirals	Torsions	Rings
2	SO4	A	1164	-	-	0/0/0/0	0/0/0/0
3	HEM	A	801	1	-	0/14/114/114	0/0/8/8
3	HEM	A	802	1	-	0/14/114/114	0/0/8/8
3	HEM	A	803	1	-	0/14/114/114	0/0/8/8
3	HEM	A	804	1	-	0/14/114/114	0/0/8/8
2	SO4	B	1165	-	-	0/0/0/0	0/0/0/0
3	HEM	B	801	1	-	0/14/114/114	0/0/8/8
3	HEM	B	802	1	-	0/14/114/114	0/0/8/8
3	HEM	B	803	1	-	0/14/114/114	0/0/8/8
3	HEM	B	804	1	-	0/14/114/114	0/0/8/8
2	SO4	C	1162	-	-	0/0/0/0	0/0/0/0
3	HEM	C	801	1	-	0/14/114/114	0/0/8/8
3	HEM	C	802	1	-	0/14/114/114	0/0/8/8
3	HEM	C	803	1	-	0/14/114/114	0/0/8/8
3	HEM	C	804	1	-	0/14/114/114	0/0/8/8
3	HEM	D	801	1	-	0/14/114/114	0/0/8/8
3	HEM	D	802	1	-	0/14/114/114	0/0/8/8
3	HEM	D	803	1	-	0/14/114/114	0/0/8/8
3	HEM	D	804	1	-	0/14/114/114	0/0/8/8
3	HEM	E	801	1	-	0/14/114/114	0/0/8/8
3	HEM	E	802	1	-	0/14/114/114	0/0/8/8
3	HEM	E	803	1	-	0/14/114/114	0/0/8/8
3	HEM	E	804	1	-	0/14/114/114	0/0/8/8
2	SO4	F	1163	-	-	0/0/0/0	0/0/0/0
3	HEM	F	801	1	-	0/14/114/114	0/0/8/8
3	HEM	F	802	1	-	0/14/114/114	0/0/8/8
3	HEM	F	803	1	-	0/14/114/114	0/0/8/8
3	HEM	F	804	1	-	0/14/114/114	0/0/8/8

All (308) bond length outliers are listed below:

Mol	Chain	Res	Type	Atoms	Z	Observed(Å)	Ideal(Å)
3	C	803	HEM	C2B-C1B	-12.01	1.41	1.44
3	E	802	HEM	C3D-C4D	8.05	1.46	1.44
3	D	802	HEM	C2B-C1B	-7.14	1.42	1.44
3	C	801	HEM	C3B-C2B	-6.48	1.32	1.43
3	D	802	HEM	C3B-C2B	-6.36	1.32	1.43
3	B	803	HEM	C3B-C2B	-6.36	1.32	1.43
3	B	801	HEM	C3B-C2B	-6.32	1.32	1.43
3	D	803	HEM	C2B-C1B	-6.23	1.43	1.44
3	E	802	HEM	C3C-C2C	-6.17	1.33	1.43
3	D	803	HEM	C3C-C2C	-5.91	1.33	1.43
3	E	802	HEM	C3B-C2B	-5.83	1.33	1.43

Continued on next page...

Continued from previous page...

Mol	Chain	Res	Type	Atoms	Z	Observed(Å)	Ideal(Å)
3	A	802	HEM	C3B-C2B	-5.83	1.33	1.43
3	E	803	HEM	C3B-C2B	-5.72	1.33	1.43
3	F	802	HEM	C2D-C1D	5.66	1.46	1.44
3	A	801	HEM	C3B-C2B	-5.66	1.33	1.43
3	C	802	HEM	C3D-C2D	5.62	1.53	1.43
3	C	804	HEM	C3B-C2B	-5.53	1.34	1.43
3	D	801	HEM	C3B-C2B	-5.52	1.34	1.43
3	B	804	HEM	C3C-C2C	-5.44	1.34	1.43
3	C	803	HEM	C3B-C2B	-5.44	1.34	1.43
3	F	803	HEM	C3B-C2B	-5.43	1.34	1.43
3	B	802	HEM	C3C-CAC	5.43	1.57	1.40
3	D	802	HEM	C3C-C2C	-5.43	1.34	1.43
3	A	802	HEM	C3C-CAC	5.42	1.57	1.40
3	F	804	HEM	C3B-C2B	-5.40	1.34	1.43
3	C	801	HEM	C3C-C2C	-5.35	1.34	1.43
3	E	801	HEM	C3D-C4D	5.32	1.45	1.44
3	F	803	HEM	C3C-C2C	-5.31	1.34	1.43
3	C	802	HEM	C3C-CAC	5.31	1.57	1.40
3	C	803	HEM	C3D-C4D	5.27	1.45	1.44
3	C	804	HEM	C3C-C2C	-5.27	1.34	1.43
3	C	802	HEM	C3B-C2B	-5.25	1.34	1.43
3	A	804	HEM	C3C-C2C	-5.22	1.34	1.43
3	E	801	HEM	C3D-C2D	5.20	1.52	1.43
3	B	803	HEM	C3C-C2C	-5.19	1.34	1.43
3	D	802	HEM	C3C-CAC	5.19	1.56	1.40
3	D	803	HEM	C3B-C2B	-5.17	1.34	1.43
3	E	801	HEM	C3B-C2B	-5.15	1.34	1.43
3	C	803	HEM	C3C-CAC	5.09	1.56	1.40
3	A	804	HEM	C4A-C3A	5.09	1.46	1.40
3	D	804	HEM	C3B-C2B	-5.08	1.34	1.43
3	A	804	HEM	C3B-C2B	-5.07	1.34	1.43
3	A	802	HEM	C3C-C2C	-5.06	1.34	1.43
3	B	801	HEM	C3C-C2C	-5.05	1.34	1.43
3	B	804	HEM	C3B-C2B	-5.04	1.35	1.43
3	C	803	HEM	C3C-C2C	-5.01	1.35	1.43
3	E	801	HEM	C3C-C2C	-5.00	1.35	1.43
3	D	801	HEM	C3C-C2C	-5.00	1.35	1.43
3	A	804	HEM	C3D-C2D	4.98	1.52	1.43
3	B	802	HEM	C4A-C3A	4.98	1.46	1.40
3	E	804	HEM	C3C-CAC	4.98	1.56	1.40
3	E	801	HEM	C3C-CAC	4.96	1.56	1.40
3	F	804	HEM	C3C-C2C	-4.95	1.35	1.43

Continued on next page...

Continued from previous page...

Mol	Chain	Res	Type	Atoms	Z	Observed(Å)	Ideal(Å)
3	E	804	HEM	C3B-C2B	-4.94	1.35	1.43
3	E	804	HEM	C3C-C2C	-4.93	1.35	1.43
3	F	804	HEM	C3D-C2D	4.93	1.52	1.43
3	F	804	HEM	C3C-CAC	4.92	1.55	1.40
3	F	803	HEM	C4A-C3A	4.92	1.46	1.40
3	F	801	HEM	C3C-C2C	-4.92	1.35	1.43
3	B	801	HEM	C3C-CAC	4.88	1.55	1.40
3	B	802	HEM	C3D-C2D	4.87	1.52	1.43
3	F	802	HEM	C3C-CAC	4.85	1.55	1.40
3	A	803	HEM	C3C-CAC	4.84	1.55	1.40
3	A	804	HEM	C3D-C4D	4.84	1.45	1.44
3	E	802	HEM	C3C-CAC	4.82	1.55	1.40
3	B	803	HEM	C3C-CAC	4.78	1.55	1.40
3	D	804	HEM	C2B-C1B	4.77	1.45	1.44
3	B	801	HEM	C3B-CAB	4.76	1.55	1.40
3	B	802	HEM	C3C-C2C	-4.76	1.35	1.43
3	F	802	HEM	C3C-C2C	-4.76	1.35	1.43
3	C	801	HEM	C3C-CAC	4.74	1.55	1.40
3	E	803	HEM	C3C-CAC	4.72	1.55	1.40
3	D	803	HEM	C3D-C2D	4.72	1.52	1.43
3	A	801	HEM	C3B-CAB	4.70	1.55	1.40
3	B	801	HEM	C4A-C3A	4.69	1.46	1.40
3	E	801	HEM	C3B-CAB	4.68	1.55	1.40
3	C	804	HEM	C3C-CAC	4.68	1.55	1.40
3	D	804	HEM	C3C-CAC	4.68	1.55	1.40
3	C	802	HEM	C3B-CAB	4.68	1.55	1.40
3	B	804	HEM	C3C-CAC	4.67	1.55	1.40
3	C	802	HEM	C3C-C2C	-4.67	1.35	1.43
3	D	801	HEM	C3C-CAC	4.67	1.55	1.40
3	B	803	HEM	C3D-C2D	4.65	1.51	1.43
3	A	804	HEM	C3C-CAC	4.64	1.55	1.40
3	A	803	HEM	C3B-CAB	4.63	1.55	1.40
3	E	802	HEM	C3D-C2D	4.63	1.51	1.43
3	B	802	HEM	C3B-C2B	-4.62	1.35	1.43
3	D	802	HEM	C3B-CAB	4.62	1.54	1.40
3	F	804	HEM	C3B-CAB	4.61	1.54	1.40
3	F	803	HEM	C3C-CAC	4.60	1.54	1.40
3	A	803	HEM	C3C-C2C	-4.59	1.35	1.43
3	E	804	HEM	C3B-CAB	4.59	1.54	1.40
3	A	802	HEM	C3B-CAB	4.59	1.54	1.40
3	B	801	HEM	C3D-C2D	4.58	1.51	1.43
3	C	804	HEM	C3D-C2D	4.58	1.51	1.43

Continued on next page...

Continued from previous page...

Mol	Chain	Res	Type	Atoms	Z	Observed(Å)	Ideal(Å)
3	F	801	HEM	C3B-C2B	-4.58	1.35	1.43
3	D	802	HEM	C3D-C2D	4.56	1.51	1.43
3	F	801	HEM	C3B-CAB	4.51	1.54	1.40
3	D	803	HEM	C3B-CAB	4.50	1.54	1.40
3	A	804	HEM	C2D-C1D	4.49	1.45	1.44
3	B	803	HEM	C3B-CAB	4.49	1.54	1.40
3	F	803	HEM	C3B-CAB	4.48	1.54	1.40
3	C	804	HEM	C3B-CAB	4.47	1.54	1.40
3	F	801	HEM	C3C-CAC	4.46	1.54	1.40
3	B	802	HEM	C3B-CAB	4.46	1.54	1.40
3	A	801	HEM	C3C-CAC	4.43	1.54	1.40
3	D	801	HEM	C3B-CAB	4.41	1.54	1.40
3	E	801	HEM	C4A-C3A	4.39	1.45	1.40
3	D	803	HEM	C3C-CAC	4.38	1.54	1.40
3	C	804	HEM	C4A-C3A	4.38	1.45	1.40
3	A	803	HEM	C3B-C2B	-4.35	1.36	1.43
3	F	803	HEM	C3D-C2D	4.34	1.51	1.43
3	A	801	HEM	C4A-C3A	4.30	1.45	1.40
3	B	804	HEM	C3B-CAB	4.29	1.53	1.40
3	D	804	HEM	C3B-CAB	4.28	1.53	1.40
3	F	802	HEM	C3B-C2B	-4.27	1.36	1.43
3	A	801	HEM	C3C-C2C	-4.24	1.36	1.43
3	B	804	HEM	C3D-C2D	4.21	1.51	1.43
3	A	802	HEM	C4A-C3A	4.21	1.45	1.40
3	A	801	HEM	C3D-C2D	4.20	1.51	1.43
3	E	804	HEM	C4A-C3A	4.18	1.45	1.40
3	E	803	HEM	C3B-CAB	4.16	1.53	1.40
3	D	801	HEM	C3D-C2D	4.16	1.51	1.43
3	F	804	HEM	C4A-C3A	4.14	1.45	1.40
3	C	801	HEM	C3B-CAB	4.13	1.53	1.40
3	A	804	HEM	C3B-CAB	4.13	1.53	1.40
3	F	801	HEM	C3D-C2D	4.12	1.51	1.43
3	E	802	HEM	C3B-CAB	4.12	1.53	1.40
3	F	802	HEM	C3B-CAB	4.12	1.53	1.40
3	D	804	HEM	C3D-C2D	4.11	1.51	1.43
3	E	803	HEM	C3D-C4D	-4.08	1.43	1.44
3	B	801	HEM	C2D-C1D	4.07	1.45	1.44
3	B	801	HEM	C3D-C4D	-4.07	1.43	1.44
3	B	803	HEM	C4A-C3A	4.07	1.45	1.40
3	C	803	HEM	C3B-CAB	4.06	1.53	1.40
3	C	801	HEM	C3D-C2D	4.04	1.50	1.43
3	B	802	HEM	C2D-C1D	4.03	1.45	1.44

Continued on next page...

Continued from previous page...

Mol	Chain	Res	Type	Atoms	Z	Observed(Å)	Ideal(Å)
3	E	803	HEM	C3C-C2C	-3.94	1.36	1.43
3	F	802	HEM	C3D-C2D	3.88	1.50	1.43
3	E	803	HEM	C4A-C3A	3.82	1.44	1.40
3	F	804	HEM	C2D-C1D	3.79	1.45	1.44
3	C	801	HEM	C4A-C3A	3.75	1.44	1.40
3	E	803	HEM	C3D-C2D	3.70	1.50	1.43
3	A	803	HEM	C4A-C3A	3.69	1.44	1.40
3	C	803	HEM	C3D-C2D	3.67	1.50	1.43
3	F	802	HEM	C2B-C1B	3.65	1.45	1.44
3	E	804	HEM	C3D-C2D	3.63	1.50	1.43
3	D	804	HEM	C3C-C2C	-3.62	1.37	1.43
3	B	803	HEM	C2B-C1B	3.62	1.45	1.44
3	F	802	HEM	C4A-C3A	3.62	1.44	1.40
3	B	801	HEM	C2B-C1B	3.61	1.45	1.44
3	A	802	HEM	C3D-C2D	3.58	1.50	1.43
3	A	801	HEM	C3D-C4D	-3.55	1.43	1.44
3	F	801	HEM	C4A-C3A	3.49	1.44	1.40
3	B	804	HEM	C4A-C3A	3.49	1.44	1.40
3	D	802	HEM	C2D-C1D	3.44	1.45	1.44
3	D	803	HEM	C3D-C4D	3.43	1.45	1.44
3	D	804	HEM	C4A-C3A	3.39	1.44	1.40
3	C	801	HEM	C2B-C1B	-3.23	1.43	1.44
3	C	803	HEM	C4A-C3A	3.22	1.44	1.40
3	E	802	HEM	C4A-C3A	3.21	1.44	1.40
3	E	804	HEM	C2D-C1D	3.19	1.45	1.44
3	A	801	HEM	CHB-C1B	3.17	1.40	1.35
3	A	803	HEM	C3D-C2D	3.13	1.49	1.43
3	C	802	HEM	C4A-C3A	3.12	1.44	1.40
3	D	801	HEM	C4A-C3A	3.09	1.44	1.40
3	D	803	HEM	CMB-C2B	3.06	1.56	1.47
3	D	804	HEM	C1A-NA	2.99	1.42	1.36
3	A	804	HEM	FE-NA	2.92	2.05	1.92
3	A	803	HEM	CAA-C2A	2.88	1.57	1.52
3	C	802	HEM	C2B-C1B	-2.81	1.43	1.44
3	E	804	HEM	CMB-C2B	2.78	1.56	1.47
3	D	802	HEM	CMD-C2D	2.77	1.56	1.47
3	B	802	HEM	FE-NA	2.77	2.04	1.92
3	F	801	HEM	CMD-C2D	2.76	1.56	1.47
3	D	802	HEM	FE-NA	2.73	2.04	1.92
3	C	803	HEM	CMC-C2C	2.71	1.55	1.47
3	D	803	HEM	CMC-C2C	2.70	1.55	1.47
3	A	804	HEM	CMC-C2C	2.69	1.55	1.47

Continued on next page...

Continued from previous page...

Mol	Chain	Res	Type	Atoms	Z	Observed(Å)	Ideal(Å)
3	B	801	HEM	CMC-C2C	2.68	1.55	1.47
3	A	803	HEM	CHB-C1B	2.67	1.39	1.35
3	F	801	HEM	FE-NA	2.67	2.03	1.92
3	C	802	HEM	CMB-C2B	2.66	1.55	1.47
3	C	802	HEM	FE-NC	2.64	2.07	1.97
3	E	801	HEM	CMB-C2B	2.64	1.55	1.47
3	A	803	HEM	C2D-C1D	-2.62	1.43	1.44
3	F	803	HEM	CAA-C2A	2.61	1.56	1.52
3	C	802	HEM	CMD-C2D	2.60	1.55	1.47
3	A	801	HEM	FE-NA	2.60	2.03	1.92
3	E	801	HEM	CMD-C2D	2.58	1.55	1.47
3	D	803	HEM	C4A-C3A	2.57	1.43	1.40
3	D	801	HEM	CMD-C2D	2.57	1.55	1.47
3	B	804	HEM	FE-NA	2.57	2.03	1.92
3	F	801	HEM	CMB-C2B	2.57	1.55	1.47
3	E	803	HEM	CAA-C2A	2.56	1.56	1.52
3	E	802	HEM	CMC-C2C	2.56	1.55	1.47
3	D	804	HEM	C3D-C4D	-2.55	1.43	1.44
3	F	802	HEM	CMB-C2B	2.55	1.55	1.47
3	B	802	HEM	CAA-C2A	2.53	1.56	1.52
3	E	804	HEM	CMD-C2D	2.53	1.55	1.47
3	C	803	HEM	C2D-C1D	-2.53	1.43	1.44
3	E	802	HEM	FE-NA	2.51	2.03	1.92
3	B	801	HEM	CMD-C2D	2.51	1.55	1.47
3	B	801	HEM	CMB-C2B	2.49	1.55	1.47
3	D	801	HEM	CMB-C2B	2.49	1.55	1.47
3	D	801	HEM	CMC-C2C	2.49	1.55	1.47
3	E	804	HEM	FE-NA	2.49	2.03	1.92
3	D	804	HEM	CMD-C2D	2.49	1.55	1.47
3	B	803	HEM	CMC-C2C	2.48	1.55	1.47
3	D	802	HEM	C4A-C3A	2.48	1.43	1.40
3	C	802	HEM	FE-ND	2.48	2.06	1.97
3	A	802	HEM	CMD-C2D	2.48	1.55	1.47
3	B	803	HEM	CAA-C2A	2.48	1.56	1.52
3	A	803	HEM	CMC-C2C	2.47	1.55	1.47
3	C	802	HEM	FE-NA	2.47	2.03	1.92
3	D	804	HEM	FE-NA	2.47	2.03	1.92
3	F	804	HEM	CMD-C2D	2.46	1.55	1.47
3	B	804	HEM	CMD-C2D	2.46	1.55	1.47
3	B	803	HEM	CMB-C2B	2.45	1.55	1.47
3	E	801	HEM	CMC-C2C	2.45	1.55	1.47
3	C	801	HEM	CMC-C2C	2.44	1.55	1.47

Continued on next page...

Continued from previous page...

Mol	Chain	Res	Type	Atoms	Z	Observed(Å)	Ideal(Å)
3	D	804	HEM	CMB-C2B	2.44	1.55	1.47
3	D	803	HEM	CMA-C3A	2.43	1.56	1.51
3	E	801	HEM	CAA-C2A	2.43	1.56	1.52
3	C	804	HEM	C2D-C1D	-2.43	1.43	1.44
3	C	802	HEM	CMC-C2C	2.43	1.55	1.47
3	F	802	HEM	CMC-C2C	2.43	1.54	1.47
3	F	802	HEM	FE-NA	2.43	2.02	1.92
3	B	802	HEM	CMD-C2D	2.42	1.54	1.47
3	A	802	HEM	CMC-C2C	2.40	1.54	1.47
3	E	804	HEM	CAA-C2A	2.40	1.56	1.52
3	A	804	HEM	CMB-C2B	2.39	1.54	1.47
3	C	801	HEM	CMD-C2D	2.38	1.54	1.47
3	A	802	HEM	CMB-C2B	2.38	1.54	1.47
3	D	804	HEM	CMC-C2C	2.37	1.54	1.47
3	B	802	HEM	C2B-C1B	-2.37	1.44	1.44
3	A	802	HEM	FE-NA	2.36	2.02	1.92
3	B	804	HEM	CMB-C2B	2.34	1.54	1.47
3	B	802	HEM	CMC-C2C	2.34	1.54	1.47
3	C	803	HEM	FE-NA	2.34	2.02	1.92
3	F	804	HEM	CMC-C2C	2.34	1.54	1.47
3	C	803	HEM	CMD-C2D	2.33	1.54	1.47
3	C	804	HEM	CMB-C2B	2.33	1.54	1.47
3	C	804	HEM	FE-NA	2.32	2.02	1.92
3	B	802	HEM	CMB-C2B	2.32	1.54	1.47
3	F	803	HEM	C2D-C1D	2.32	1.45	1.44
3	D	802	HEM	CMB-C2B	2.32	1.54	1.47
3	F	803	HEM	CMB-C2B	2.31	1.54	1.47
3	F	803	HEM	CMD-C2D	2.31	1.54	1.47
3	C	804	HEM	CMD-C2D	2.31	1.54	1.47
3	B	803	HEM	C3B-C4B	2.30	1.47	1.44
3	A	801	HEM	CMB-C2B	2.30	1.54	1.47
3	A	801	HEM	CMD-C2D	2.29	1.54	1.47
3	A	801	HEM	CMC-C2C	2.29	1.54	1.47
3	B	804	HEM	CMC-C2C	2.29	1.54	1.47
3	E	803	HEM	CMB-C2B	2.28	1.54	1.47
3	E	802	HEM	C2D-C1D	-2.27	1.44	1.44
3	E	803	HEM	FE-NB	2.26	2.06	1.97
3	A	804	HEM	CMD-C2D	2.25	1.54	1.47
3	F	804	HEM	CMB-C2B	2.25	1.54	1.47
3	F	802	HEM	CAA-C2A	2.25	1.56	1.52
3	E	803	HEM	CMC-C2C	2.24	1.54	1.47
3	F	802	HEM	CMD-C2D	2.24	1.54	1.47

Continued on next page...

Continued from previous page...

Mol	Chain	Res	Type	Atoms	Z	Observed(Å)	Ideal(Å)
3	E	803	HEM	C2D-C1D	2.24	1.45	1.44
3	C	802	HEM	FE-NB	2.23	2.06	1.97
3	E	804	HEM	CMC-C2C	2.23	1.54	1.47
3	F	803	HEM	CMC-C2C	2.23	1.54	1.47
3	B	801	HEM	CAA-C2A	2.21	1.55	1.52
3	A	801	HEM	CAA-C2A	2.21	1.55	1.52
3	B	803	HEM	CMD-C2D	2.21	1.54	1.47
3	C	804	HEM	CAA-C2A	2.21	1.55	1.52
3	E	803	HEM	FE-NA	2.21	2.01	1.92
3	D	803	HEM	CAA-C2A	2.19	1.55	1.52
3	F	803	HEM	CHC-C1C	2.19	1.40	1.36
3	C	801	HEM	FE-NA	2.19	2.01	1.92
3	D	801	HEM	CAA-C2A	2.19	1.55	1.52
3	C	801	HEM	CMA-C3A	2.18	1.56	1.51
3	C	804	HEM	CMC-C2C	2.18	1.54	1.47
3	A	803	HEM	CMB-C2B	2.17	1.54	1.47
3	F	804	HEM	FE-NA	2.17	2.01	1.92
3	D	802	HEM	CHA-C4D	2.17	1.38	1.35
3	C	802	HEM	CHB-C1B	2.15	1.38	1.35
3	B	803	HEM	FE-NA	2.14	2.01	1.92
3	E	802	HEM	CMD-C2D	2.13	1.54	1.47
3	A	801	HEM	FE-NB	2.12	2.05	1.97
3	C	802	HEM	C4A-NA	2.12	1.40	1.36
3	E	801	HEM	FE-NA	2.12	2.01	1.92
3	C	803	HEM	CHB-C1B	2.12	1.38	1.35
3	C	803	HEM	CMB-C2B	2.11	1.54	1.47
3	C	802	HEM	CAA-C2A	2.11	1.55	1.52
3	F	802	HEM	CHB-C1B	2.11	1.38	1.35
3	E	802	HEM	CMB-C2B	2.09	1.53	1.47
3	A	802	HEM	CBB-CAB	2.09	1.40	1.28
3	D	803	HEM	FE-ND	2.09	2.05	1.97
3	E	803	HEM	C4A-NA	2.08	1.40	1.36
3	B	803	HEM	CHB-C1B	2.08	1.38	1.35
3	D	802	HEM	CMC-C2C	2.09	1.53	1.47
3	D	804	HEM	CHB-C1B	2.08	1.38	1.35
3	D	803	HEM	FE-NA	2.08	2.01	1.92
3	C	802	HEM	CMA-C3A	2.08	1.56	1.51
3	F	802	HEM	CBB-CAB	2.07	1.40	1.28
3	B	802	HEM	C3D-C4D	2.07	1.45	1.44
3	A	801	HEM	C2D-C1D	-2.07	1.44	1.44
3	F	804	HEM	FE-ND	2.05	2.05	1.97
3	D	803	HEM	CMD-C2D	2.05	1.53	1.47

Continued on next page...

Continued from previous page...

Mol	Chain	Res	Type	Atoms	Z	Observed(Å)	Ideal(Å)
3	D	801	HEM	CAD-CBD	2.04	1.58	1.52
3	E	802	HEM	CAA-C2A	2.03	1.55	1.52
3	A	803	HEM	CMD-C2D	2.03	1.53	1.47

All (269) bond angle outliers are listed below:

Mol	Chain	Res	Type	Atoms	Z	Observed(°)	Ideal(°)
3	C	803	HEM	C3B-C4B-NB	-10.19	106.71	114.00
3	F	803	HEM	C3B-C4B-NB	-9.18	107.43	114.00
3	E	803	HEM	C3B-C4B-NB	-8.49	107.92	114.00
3	B	802	HEM	C3B-C4B-NB	-8.36	108.02	114.00
3	C	802	HEM	C3B-C4B-NB	-8.33	108.04	114.00
3	E	804	HEM	C3B-C4B-NB	-8.22	108.12	114.00
3	D	802	HEM	C3B-C4B-NB	-7.89	108.36	114.00
3	C	804	HEM	C3B-C4B-NB	-7.77	108.44	114.00
3	D	801	HEM	C3B-C4B-NB	-7.70	108.49	114.00
3	A	804	HEM	C3B-C4B-NB	-7.61	108.56	114.00
3	E	802	HEM	C3B-C4B-NB	-7.51	108.63	114.00
3	A	801	HEM	C3B-C4B-NB	-7.49	108.64	114.00
3	D	804	HEM	C3B-C4B-NB	-7.29	108.78	114.00
3	B	804	HEM	C3B-C4B-NB	-7.22	108.83	114.00
3	A	802	HEM	C3B-C4B-NB	-7.22	108.83	114.00
3	B	801	HEM	C3B-C4B-NB	-7.13	108.90	114.00
3	F	802	HEM	C3B-C4B-NB	-7.03	108.97	114.00
3	C	801	HEM	C3B-C4B-NB	-7.03	108.97	114.00
3	A	803	HEM	C3B-C4B-NB	-6.98	109.01	114.00
3	B	803	HEM	C3B-C4B-NB	-6.86	109.09	114.00
3	F	801	HEM	C3B-C4B-NB	-6.79	109.14	114.00
3	F	804	HEM	C3B-C4B-NB	-6.75	109.17	114.00
3	F	802	HEM	C4D-ND-C1D	6.57	111.88	105.16
3	C	802	HEM	C4D-ND-C1D	6.46	111.77	105.16
3	D	803	HEM	C3B-C4B-NB	-6.37	109.44	114.00
3	B	802	HEM	C4D-ND-C1D	6.18	111.49	105.16
3	D	802	HEM	C4D-ND-C1D	6.14	111.44	105.16
3	B	801	HEM	C4D-ND-C1D	6.09	111.39	105.16
3	F	804	HEM	C4D-ND-C1D	5.97	111.27	105.16
3	A	802	HEM	C4D-ND-C1D	5.80	111.10	105.16
3	D	801	HEM	C4D-ND-C1D	5.61	110.91	105.16
3	E	801	HEM	C4D-ND-C1D	5.58	110.87	105.16
3	C	804	HEM	C4D-ND-C1D	5.45	110.74	105.16
3	E	803	HEM	C4D-ND-C1D	5.32	110.61	105.16
3	F	803	HEM	C4D-ND-C1D	5.29	110.58	105.16

Continued on next page...

Continued from previous page...

Mol	Chain	Res	Type	Atoms	Z	Observed(°)	Ideal(°)
3	C	803	HEM	CMA-C3A-C4A	-5.14	120.72	128.62
3	B	803	HEM	C4D-ND-C1D	5.14	110.42	105.16
3	E	801	HEM	C3B-C4B-NB	-5.06	110.38	114.00
3	D	803	HEM	C4D-ND-C1D	4.95	110.23	105.16
3	C	803	HEM	CHC-C4B-NB	4.94	128.69	124.58
3	C	801	HEM	C4D-ND-C1D	4.94	110.21	105.16
3	B	804	HEM	C4D-ND-C1D	4.88	110.16	105.16
3	A	801	HEM	C4D-ND-C1D	4.83	110.11	105.16
3	E	804	HEM	C4D-ND-C1D	4.79	110.06	105.16
3	A	802	HEM	C2D-C1D-ND	-4.76	107.31	112.93
3	E	803	HEM	CMA-C3A-C4A	-4.74	121.33	128.62
3	E	802	HEM	CBD-CAD-C3D	-4.72	104.08	114.37
3	B	801	HEM	CHD-C1D-ND	4.71	128.50	124.58
3	E	802	HEM	CAD-C3D-C4D	4.61	132.82	124.53
3	D	801	HEM	CHD-C1D-ND	4.60	128.40	124.58
3	B	803	HEM	CBA-CAA-C2A	-4.53	104.70	112.69
3	D	802	HEM	C2D-C1D-ND	-4.45	107.67	112.93
3	E	804	HEM	CHD-C1D-ND	4.31	128.16	124.58
3	D	801	HEM	CHC-C4B-NB	4.25	128.11	124.58
3	B	801	HEM	C2D-C1D-ND	-4.22	107.95	112.93
3	F	804	HEM	CBD-CAD-C3D	-4.22	105.17	114.37
3	C	803	HEM	C1B-NB-C4B	4.19	109.45	105.16
3	D	804	HEM	C4D-ND-C1D	4.16	109.42	105.16
3	E	803	HEM	C2D-C1D-ND	-4.12	108.06	112.93
3	A	804	HEM	C4D-ND-C1D	4.10	109.36	105.16
3	E	802	HEM	CMA-C3A-C4A	-4.10	122.32	128.62
3	D	803	HEM	C2D-C1D-ND	-4.04	108.17	112.93
3	E	804	HEM	C2D-C1D-ND	-3.97	108.24	112.93
3	A	801	HEM	CHD-C1D-ND	3.96	127.87	124.58
3	C	802	HEM	C2D-C1D-ND	-3.92	108.31	112.93
3	D	802	HEM	CBD-CAD-C3D	-3.87	105.93	114.37
3	A	802	HEM	CHC-C1C-NC	3.87	128.09	124.73
3	E	802	HEM	C4A-C3A-C2A	3.86	109.68	107.00
3	F	801	HEM	C4A-C3A-C2A	3.85	109.68	107.00
3	B	802	HEM	C2D-C1D-ND	-3.85	108.39	112.93
3	A	801	HEM	CBA-CAA-C2A	3.84	119.45	112.69
3	F	802	HEM	CBD-CAD-C3D	-3.83	106.01	114.37
3	D	801	HEM	C2D-C1D-ND	-3.82	108.41	112.93
3	E	801	HEM	CHC-C1C-NC	3.82	128.05	124.73
3	D	804	HEM	CHD-C1D-ND	3.82	127.76	124.58
3	D	803	HEM	CBD-CAD-C3D	-3.79	106.11	114.37
3	A	802	HEM	CHD-C1D-ND	3.78	127.72	124.58

Continued on next page...

Continued from previous page...

Mol	Chain	Res	Type	Atoms	Z	Observed(°)	Ideal(°)
3	D	803	HEM	CHD-C1D-ND	3.77	127.72	124.58
3	E	802	HEM	C3A-C4A-NA	-3.76	106.57	109.41
3	E	802	HEM	C4D-ND-C1D	3.74	108.98	105.16
3	A	804	HEM	CHD-C4C-NC	3.73	127.97	124.73
3	C	803	HEM	C4D-ND-C1D	3.70	108.94	105.16
3	D	802	HEM	CHD-C1D-ND	3.70	127.66	124.58
3	D	804	HEM	CMA-C3A-C4A	-3.67	122.97	128.62
3	C	803	HEM	C2D-C1D-ND	-3.65	108.62	112.93
3	A	803	HEM	C4D-ND-C1D	3.64	108.88	105.16
3	F	803	HEM	CBD-CAD-C3D	-3.62	106.46	114.37
3	D	803	HEM	CHC-C1C-NC	3.61	127.87	124.73
3	D	803	HEM	C4A-C3A-C2A	3.58	109.49	107.00
3	F	802	HEM	C2D-C1D-ND	-3.58	108.71	112.93
3	B	803	HEM	CHD-C1D-ND	3.57	127.55	124.58
3	C	802	HEM	CMA-C3A-C4A	-3.54	123.18	128.62
3	B	803	HEM	C2D-C1D-ND	-3.52	108.78	112.93
3	C	803	HEM	C4A-C3A-C2A	3.50	109.43	107.00
3	E	803	HEM	CHC-C1C-NC	3.49	127.77	124.73
3	A	801	HEM	CBD-CAD-C3D	-3.48	106.77	114.37
3	D	802	HEM	CMA-C3A-C4A	-3.48	123.27	128.62
3	C	803	HEM	CBD-CAD-C3D	-3.46	106.81	114.37
3	C	802	HEM	C3A-C4A-NA	-3.46	106.80	109.41
3	C	803	HEM	CBA-CAA-C2A	-3.45	106.61	112.69
3	F	803	HEM	C2D-C1D-ND	-3.43	108.88	112.93
3	C	802	HEM	CHD-C1D-ND	3.42	127.42	124.58
3	E	804	HEM	CHC-C1C-NC	3.40	127.69	124.73
3	C	804	HEM	C2D-C1D-ND	-3.40	108.91	112.93
3	F	801	HEM	C3A-C4A-NA	-3.38	106.86	109.41
3	C	801	HEM	C2D-C1D-ND	-3.33	108.99	112.93
3	D	804	HEM	CBD-CAD-C3D	-3.33	107.10	114.37
3	C	802	HEM	C1B-NB-C4B	3.33	108.57	105.16
3	B	804	HEM	C2D-C1D-ND	-3.32	109.01	112.93
3	E	803	HEM	CHD-C1D-ND	3.32	127.34	124.58
3	C	802	HEM	C4A-C3A-C2A	3.29	109.29	107.00
3	C	802	HEM	CHC-C1C-NC	3.29	127.59	124.73
3	F	801	HEM	C4D-ND-C1D	3.26	108.50	105.16
3	B	804	HEM	CHC-C1C-NC	3.26	127.56	124.73
3	B	804	HEM	C4A-C3A-C2A	3.25	109.25	107.00
3	F	804	HEM	C2D-C1D-ND	-3.24	109.10	112.93
3	B	801	HEM	C1A-CHA-C4D	-3.24	123.21	127.47
3	F	803	HEM	CHD-C1D-ND	3.23	127.27	124.58
3	C	804	HEM	CHD-C1D-ND	3.19	127.23	124.58

Continued on next page...

Continued from previous page...

Mol	Chain	Res	Type	Atoms	Z	Observed(°)	Ideal(°)
3	C	801	HEM	C4C-NC-C1C	3.16	108.82	105.53
3	D	801	HEM	CMA-C3A-C4A	-3.13	123.80	128.62
3	C	802	HEM	C4A-CHB-C1B	-3.12	123.36	127.47
3	A	802	HEM	C4A-CHB-C1B	-3.09	123.41	127.47
3	B	802	HEM	CHC-C4B-NB	3.07	127.14	124.58
3	E	801	HEM	C2D-C1D-ND	-3.07	109.30	112.93
3	B	804	HEM	CMA-C3A-C4A	-3.06	123.91	128.62
3	C	801	HEM	CHD-C4C-NC	3.03	127.37	124.73
3	B	803	HEM	CMA-C3A-C4A	-3.03	123.97	128.62
3	D	804	HEM	CHC-C1C-NC	3.02	127.36	124.73
3	A	802	HEM	CMA-C3A-C4A	-3.01	123.98	128.62
3	D	802	HEM	CHC-C1C-NC	2.99	127.33	124.73
3	C	801	HEM	C1A-CHA-C4D	-2.97	123.57	127.47
3	F	803	HEM	CHB-C1B-NB	2.93	128.34	124.31
3	A	803	HEM	CBD-CAD-C3D	-2.93	107.97	114.37
3	D	801	HEM	CBD-CAD-C3D	-2.91	108.02	114.37
3	E	802	HEM	CHD-C1D-ND	2.89	126.98	124.58
3	F	802	HEM	CHD-C1D-ND	2.88	126.97	124.58
3	E	803	HEM	C1B-NB-C4B	2.87	108.10	105.16
3	F	804	HEM	CHC-C4B-NB	2.87	126.97	124.58
3	B	803	HEM	CHC-C1C-NC	2.85	127.21	124.73
3	A	802	HEM	C4A-C3A-C2A	2.85	108.98	107.00
3	E	803	HEM	CBA-CAA-C2A	-2.84	107.69	112.69
3	B	802	HEM	C4A-CHB-C1B	-2.84	123.74	127.47
3	E	802	HEM	CHC-C1C-NC	2.82	127.18	124.73
3	A	801	HEM	C2D-C1D-ND	-2.82	109.60	112.93
3	E	801	HEM	CMA-C3A-C4A	-2.82	124.29	128.62
3	E	804	HEM	CMA-C3A-C4A	-2.79	124.33	128.62
3	F	801	HEM	CMA-C3A-C4A	-2.78	124.34	128.62
3	B	801	HEM	C1B-NB-C4B	2.78	108.01	105.16
3	F	803	HEM	C4A-CHB-C1B	-2.78	123.81	127.47
3	C	801	HEM	CHA-C4D-ND	2.78	128.12	124.31
3	B	801	HEM	CBA-CAA-C2A	2.77	117.58	112.69
3	A	803	HEM	C2D-C1D-ND	-2.77	109.66	112.93
3	C	804	HEM	CAD-C3D-C4D	2.77	129.50	124.53
3	D	801	HEM	O2D-CGD-O1D	-2.75	116.29	123.30
3	D	803	HEM	CMA-C3A-C4A	-2.73	124.42	128.62
3	D	801	HEM	CAD-CBD-CGD	2.73	122.01	113.48
3	B	803	HEM	CBD-CAD-C3D	-2.73	108.42	114.37
3	A	804	HEM	C4C-NC-C1C	2.72	108.36	105.53
3	F	804	HEM	CMA-C3A-C4A	-2.72	124.44	128.62
3	E	804	HEM	C4A-C3A-C2A	2.71	108.88	107.00

Continued on next page...

Continued from previous page...

Mol	Chain	Res	Type	Atoms	Z	Observed(°)	Ideal(°)
3	E	803	HEM	CBD-CAD-C3D	-2.71	108.46	114.37
3	D	804	HEM	C1A-CHA-C4D	-2.69	123.93	127.47
3	A	803	HEM	C4A-CHB-C1B	-2.67	123.95	127.47
3	C	804	HEM	CHB-C1B-NB	2.64	127.94	124.31
3	E	802	HEM	C1B-NB-C4B	2.64	107.86	105.16
3	E	803	HEM	CMA-C3A-C2A	2.63	129.90	124.94
3	E	803	HEM	CHC-C4B-NB	2.63	126.77	124.58
3	C	802	HEM	CBD-CAD-C3D	-2.61	108.67	114.37
3	C	803	HEM	CMA-C3A-C2A	2.61	129.85	124.94
3	D	802	HEM	C4A-CHB-C1B	-2.59	124.07	127.47
3	D	803	HEM	C4A-CHB-C1B	-2.56	124.10	127.47
3	A	801	HEM	CHC-C1C-NC	2.55	126.95	124.73
3	E	804	HEM	C1A-CHA-C4D	-2.55	124.12	127.47
3	A	802	HEM	CHC-C4B-NB	2.55	126.70	124.58
3	F	801	HEM	C4C-NC-C1C	2.54	108.18	105.53
3	C	803	HEM	CAD-C3D-C4D	2.54	129.09	124.53
3	F	802	HEM	C1B-NB-C4B	2.54	107.76	105.16
3	E	803	HEM	C4A-C3A-C2A	2.54	108.76	107.00
3	B	804	HEM	CAD-C3D-C4D	2.53	129.09	124.53
3	B	802	HEM	C4C-NC-C1C	2.53	108.17	105.53
3	B	801	HEM	CMA-C3A-C4A	-2.53	124.73	128.62
3	B	802	HEM	CMA-C3A-C4A	-2.53	124.73	128.62
3	A	801	HEM	CMA-C3A-C4A	-2.53	124.73	128.62
3	E	803	HEM	C4A-CHB-C1B	-2.52	124.16	127.47
3	C	803	HEM	CHD-C1D-ND	2.51	126.67	124.58
3	D	804	HEM	C2D-C1D-ND	-2.50	109.98	112.93
3	C	802	HEM	C4C-NC-C1C	2.50	108.13	105.53
3	A	804	HEM	C2D-C1D-ND	-2.49	109.99	112.93
3	E	803	HEM	CAD-C3D-C4D	2.47	128.96	124.53
3	A	801	HEM	C1A-CHA-C4D	-2.46	124.23	127.47
3	A	803	HEM	C1A-CHA-C4D	-2.46	124.23	127.47
3	E	802	HEM	C2D-C1D-ND	-2.46	110.03	112.93
3	E	801	HEM	C3A-C4A-NA	-2.45	107.56	109.41
3	D	801	HEM	C4A-C3A-C2A	2.43	108.69	107.00
3	D	801	HEM	C4A-CHB-C1B	-2.43	124.28	127.47
3	C	801	HEM	CBD-CAD-C3D	-2.42	109.09	114.37
3	E	804	HEM	C1B-NB-C4B	2.42	107.64	105.16
3	A	804	HEM	CHC-C1C-NC	2.42	126.83	124.73
3	F	802	HEM	CHC-C4B-NB	2.42	126.59	124.58
3	A	803	HEM	C1B-NB-C4B	2.41	107.62	105.16
3	D	801	HEM	O2D-CGD-CBD	2.40	122.70	114.22
3	D	802	HEM	CBA-CAA-C2A	-2.40	108.46	112.69

Continued on next page...

Continued from previous page...

Mol	Chain	Res	Type	Atoms	Z	Observed(°)	Ideal(°)
3	B	802	HEM	CHD-C1D-ND	2.38	126.56	124.58
3	D	802	HEM	CHA-C4D-ND	2.36	127.55	124.31
3	A	803	HEM	CMA-C3A-C4A	-2.35	125.00	128.62
3	B	802	HEM	CHD-C4C-NC	2.34	126.76	124.73
3	F	801	HEM	C4A-CHB-C1B	-2.33	124.41	127.47
3	C	803	HEM	C4A-CHB-C1B	-2.32	124.42	127.47
3	B	803	HEM	C4A-C3A-C2A	2.32	108.61	107.00
3	D	804	HEM	CMA-C3A-C2A	2.31	129.31	124.94
3	A	801	HEM	C4A-CHB-C1B	-2.31	124.43	127.47
3	A	803	HEM	CAD-C3D-C4D	2.31	128.68	124.53
3	B	802	HEM	C1B-NB-C4B	2.30	107.52	105.16
3	B	804	HEM	CHD-C1D-ND	2.30	126.49	124.58
3	D	803	HEM	O2A-CGA-CBA	2.30	122.34	114.22
3	A	804	HEM	CHC-C4B-NB	2.30	126.49	124.58
3	D	801	HEM	O1A-CGA-CBA	-2.28	115.17	123.03
3	F	803	HEM	C1B-NB-C4B	2.27	107.49	105.16
3	C	801	HEM	CHC-C1C-NC	2.27	126.70	124.73
3	E	801	HEM	CAD-C3D-C4D	2.27	128.60	124.53
3	A	803	HEM	C4A-C3A-C2A	2.25	108.56	107.00
3	A	801	HEM	C1B-NB-C4B	2.25	107.46	105.16
3	D	801	HEM	C1A-CHA-C4D	-2.24	124.52	127.47
3	C	801	HEM	CHD-C1D-ND	2.23	126.44	124.58
3	C	802	HEM	CHB-C1B-NB	2.23	127.37	124.31
3	B	802	HEM	CBA-CAA-C2A	-2.23	108.77	112.69
3	E	804	HEM	O1D-CGD-CBD	-2.22	115.38	123.03
3	A	802	HEM	C3A-C4A-NA	-2.22	107.73	109.41
3	E	802	HEM	C4A-CHB-C1B	-2.22	124.55	127.47
3	C	801	HEM	C4A-CHB-C1B	-2.21	124.56	127.47
3	B	803	HEM	C1A-CHA-C4D	-2.21	124.56	127.47
3	E	801	HEM	CBD-CAD-C3D	-2.21	109.55	114.37
3	D	804	HEM	C4C-NC-C1C	2.21	107.83	105.53
3	A	801	HEM	CAD-C3D-C4D	2.20	128.49	124.53
3	A	804	HEM	CAD-C3D-C4D	2.20	128.48	124.53
3	A	804	HEM	CMA-C3A-C4A	-2.19	125.25	128.62
3	F	804	HEM	CHA-C4D-ND	2.19	127.32	124.31
3	B	801	HEM	C4A-CHB-C1B	-2.17	124.61	127.47
3	B	803	HEM	C4A-CHB-C1B	-2.17	124.62	127.47
3	D	804	HEM	CHC-C4B-NB	2.17	126.39	124.58
3	C	804	HEM	C1B-NB-C4B	2.17	107.38	105.16
3	B	802	HEM	C1A-CHA-C4D	-2.16	124.62	127.47
3	A	804	HEM	C3A-C4A-NA	-2.14	107.79	109.41
3	B	801	HEM	C4A-C3A-C2A	2.14	108.49	107.00

Continued on next page...

Continued from previous page...

Mol	Chain	Res	Type	Atoms	Z	Observed(°)	Ideal(°)
3	D	801	HEM	CAD-C3D-C4D	2.14	128.37	124.53
3	F	802	HEM	CMA-C3A-C4A	-2.12	125.36	128.62
3	F	803	HEM	CAD-C3D-C4D	2.11	128.33	124.53
3	B	803	HEM	CAD-C3D-C4D	2.11	128.32	124.53
3	A	802	HEM	CHB-C1B-NB	2.09	127.18	124.31
3	B	804	HEM	CHA-C4D-ND	2.08	127.17	124.31
3	F	803	HEM	CHC-C1C-NC	2.08	126.54	124.73
3	D	804	HEM	CHA-C4D-ND	2.07	127.16	124.31
3	D	802	HEM	C1A-CHA-C4D	-2.07	124.74	127.47
3	C	802	HEM	C1A-CHA-C4D	-2.07	124.75	127.47
3	A	803	HEM	C3A-C4A-NA	-2.07	107.85	109.41
3	A	803	HEM	CHD-C4C-NC	2.06	126.52	124.73
3	E	801	HEM	O1D-CGD-CBD	-2.06	115.95	123.03
3	D	801	HEM	C4C-NC-C1C	2.06	107.67	105.53
3	F	803	HEM	C1A-CHA-C4D	-2.05	124.77	127.47
3	C	802	HEM	CHC-C4B-NB	2.05	126.29	124.58
3	F	801	HEM	CAD-C3D-C4D	2.04	128.20	124.53
3	F	801	HEM	CHC-C4B-NB	2.04	126.28	124.58
3	F	802	HEM	C1A-CHA-C4D	-2.03	124.80	127.47
3	C	801	HEM	CAD-C3D-C4D	2.02	128.16	124.53
3	B	802	HEM	C3A-C4A-NA	-2.02	107.89	109.41
3	D	801	HEM	C1B-NB-C4B	2.01	107.21	105.16
3	A	802	HEM	CBD-CAD-C3D	-2.00	110.00	114.37
3	C	801	HEM	C1B-NB-C4B	2.00	107.21	105.16

There are no chirality outliers.

There are no torsion outliers.

There are no ring outliers.

5.7 Other polymers ⓘ

There are no such residues in this entry.

5.8 Polymer linkage issues

There are no chain breaks in this entry.

6 Fit of model and data ⓘ

6.1 Protein, DNA and RNA chains ⓘ

In the following table, the column labelled ‘#RSRZ> 2’ contains the number (and percentage) of RSRZ outliers, followed by percent RSRZ outliers for the chain as percentile scores relative to all X-ray entries and entries of similar resolution. The OWAB column contains the minimum, median, 95th percentile and maximum values of the occupancy-weighted average B-factor per residue. The column labelled ‘Q< 0.9’ lists the number of (and percentage) of residues with an average occupancy less than 0.9.

Mol	Chain	Analysed	<RSRZ>	#RSRZ>2	OWAB(Å ²)	Q<0.9
1	A	88/91 (96%)	-0.22	0 100 100	8, 14, 24, 32	0
1	B	89/91 (97%)	0.01	1 (1%) 77 82	10, 17, 25, 32	0
1	C	86/91 (94%)	0.27	1 (1%) 75 81	12, 19, 26, 30	0
1	D	86/91 (94%)	0.00	1 (1%) 75 81	10, 15, 22, 28	0
1	E	88/91 (96%)	-0.03	2 (2%) 57 62	11, 14, 21, 28	0
1	F	88/91 (96%)	0.10	2 (2%) 57 62	10, 16, 32, 38	0
All	All	525/546 (96%)	0.02	7 (1%) 74 80	8, 16, 26, 38	0

All (7) RSRZ outliers are listed below:

Mol	Chain	Res	Type	RSRZ
1	E	2	ASP	4.0
1	F	2	ASP	3.5
1	C	89	LEU	3.5
1	D	37	SER	2.4
1	B	2	ASP	2.1
1	E	26	ALA	2.0
1	F	81	ASP	2.0

6.2 Non-standard residues in protein, DNA, RNA chains ⓘ

There are no non-standard protein/DNA/RNA residues in this entry.

6.3 Carbohydrates ⓘ

There are no carbohydrates in this entry.

6.4 Ligands ⓘ

In the following table, the Atoms column lists the number of modelled atoms in the group and the number defined in the chemical component dictionary. LLDF column lists the quality of electron density of the group with respect to its neighbouring residues in protein, DNA or RNA chains. The B-factors column lists the minimum, median, 95th percentile and maximum values of B factors of atoms in the group. The column labelled 'Q < 0.9' lists the number of atoms with occupancy less than 0.9.

Mol	Type	Chain	Res	Atoms	RSR	LLDF	B-factors(Å ²)	Q<0.9
2	SO4	C	1162	5/5	0.16	3.71	24,25,27,28	0
3	HEM	D	801	43/43	0.11	2.27	9,12,25,29	0
3	HEM	A	804	43/43	0.11	1.99	10,13,28,35	0
3	HEM	B	803	43/43	0.12	1.84	11,14,30,40	0
3	HEM	B	802	43/43	0.12	1.66	11,16,35,36	0
3	HEM	B	801	43/43	0.11	1.55	9,12,32,36	0
3	HEM	C	801	43/43	0.12	1.48	10,14,31,32	0
3	HEM	F	802	43/43	0.10	1.46	8,11,27,35	0
3	HEM	E	801	43/43	0.11	1.37	9,13,32,39	0
3	HEM	A	801	43/43	0.10	1.37	7,10,23,32	0
2	SO4	A	1164	5/5	0.13	1.30	24,26,26,28	0
3	HEM	D	803	43/43	0.10	1.23	9,11,23,34	0
3	HEM	F	804	43/43	0.13	1.22	14,18,29,32	0
3	HEM	B	804	43/43	0.11	1.11	12,15,32,39	0
3	HEM	C	802	43/43	0.11	1.04	12,15,25,31	0
3	HEM	F	803	43/43	0.10	0.84	9,12,29,34	0
3	HEM	A	803	43/43	0.09	0.77	7,10,23,30	0
3	HEM	E	802	43/43	0.09	0.77	8,11,24,26	0
3	HEM	E	803	43/43	0.10	0.71	9,11,25,34	0
3	HEM	C	804	43/43	0.12	0.70	14,17,30,36	0
3	HEM	C	803	43/43	0.12	0.42	9,13,25,33	0
3	HEM	F	801	43/43	0.08	0.36	8,11,22,24	0
3	HEM	D	802	43/43	0.10	0.22	9,14,22,24	0
3	HEM	A	802	43/43	0.08	0.21	5,9,20,23	0
2	SO4	F	1163	5/5	0.16	0.14	32,33,34,35	0
3	HEM	D	804	43/43	0.08	-0.15	7,10,14,19	0
3	HEM	E	804	43/43	0.07	-0.43	8,11,16,22	0
2	SO4	B	1165	5/5	0.06	-0.93	18,21,22,23	0

6.5 Other polymers ⓘ

There are no such residues in this entry.