



# Full wwPDB X-ray Structure Validation Report ⓘ

Feb 28, 2014 – 03:53 PM GMT

PDB ID : 3M15  
Title : A Zn-mediated asymmetric trimer of a cytochrome cb562 variant (D74A-RIDC1)  
Authors : Tezcan, F.A.; Ni, T.W.  
Deposited on : 2010-03-04  
Resolution : 2.60 Å(reported)

This is a full wwPDB validation report for a publicly released PDB entry.  
We welcome your comments at [validation@mail.wwpdb.org](mailto:validation@mail.wwpdb.org)  
A user guide is available at <http://wwpdb.org/ValidationPDFNotes.html>

---

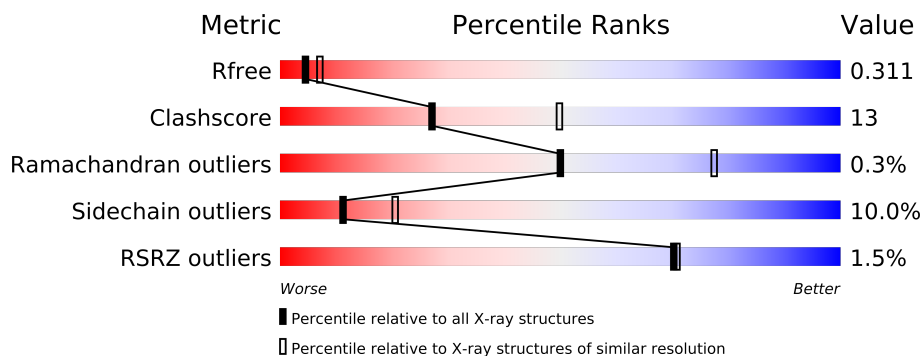
The following versions of software and data (see [references](#)) were used in the production of this report:

MolProbity : 4.02b-467  
Mogul : 1.15 2013  
Xtriage (Phenix) : dev-1323  
EDS : stable22639  
Percentile statistics : 21963  
Refmac : 5.8.0049  
CCP4 : 6.3.0 (Settle)  
Ideal geometry (proteins) : Engh & Huber (2001)  
Ideal geometry (DNA, RNA) : Parkinson et. al. (1996)  
Validation Pipeline (wwPDB-VP) : stable22683

# 1 Overall quality at a glance

The reported resolution of this entry is 2.60 Å.

Percentile scores (ranging between 0-100) for global validation metrics of the entry are shown in the following graphic. The table shows the number of entries on which the scores are based.



Metric	Whole archive (#Entries)	Similar resolution (#Entries, resolution range(Å))
$R_{free}$	66092	1718 (2.60-2.60)
Clashscore	79885	2154 (2.60-2.60)
Ramachandran outliers	78287	2113 (2.60-2.60)
Sidechain outliers	78261	2113 (2.60-2.60)
RSRZ outliers	66119	1718 (2.60-2.60)

The table below summarises the geometric issues observed across the polymeric chains and their fit to the electron density. The red, orange, yellow and green segments on the lower bar indicate the fraction of residues that contain outliers for  $\geq 3$ , 2, 1 and 0 types of geometric quality criteria. The upper red bar (where present) indicates the fraction of residues that have poor fit to the electron density.

Mol	Chain	Length	Quality of chain
1	A	106	
1	B	106	
1	C	106	

## 2 Entry composition

There are 4 unique types of molecules in this entry. The entry contains 2609 atoms, of which 0 are hydrogen and 0 are deuterium.

In the tables below, the ZeroOcc column contains the number of atoms modelled with zero occupancy, the AltConf column contains the number of residues with at least one atom in alternate conformation and the Trace column contains the number of residues modelled with at most 2 atoms.

- Molecule 1 is a protein called Soluble cytochrome b562.

Mol	Chain	Residues	Atoms					ZeroOcc	AltConf	Trace
1	A	106	Total	C	N	O	S	0	0	0
			816	505	145	161	5			
1	B	106	Total	C	N	O	S	0	1	0
			821	508	145	163	5			
1	C	106	Total	C	N	O	S	0	1	0
			821	508	145	163	5			

There are 36 discrepancies between the modelled and reference sequences:

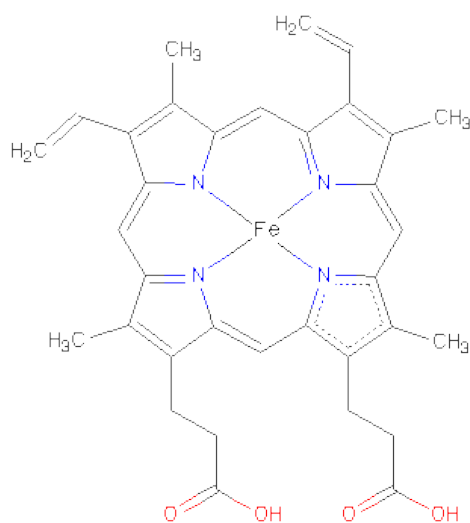
Chain	Residue	Modelled	Actual	Comment	Reference
A	34	ALA	ARG	ENGINEERED	UNP P0ABE7
A	38	ALA	LEU	ENGINEERED	UNP P0ABE7
A	41	TRP	GLN	ENGINEERED	UNP P0ABE7
A	42	SER	LYS	ENGINEERED	UNP P0ABE7
A	59	HIS	LYS	ENGINEERED	UNP P0ABE7
A	66	TRP	ASP	ENGINEERED	UNP P0ABE7
A	69	ILE	VAL	ENGINEERED	UNP P0ABE7
A	73	HIS	ASP	ENGINEERED	UNP P0ABE7
A	74	ALA	ASP	ENGINEERED	UNP P0ABE7
A	77	HIS	LYS	ENGINEERED	UNP P0ABE7
A	98	CYS	ARG	ENGINEERED	UNP P0ABE7
A	101	CYS	TYR	ENGINEERED	UNP P0ABE7
B	34	ALA	ARG	ENGINEERED	UNP P0ABE7
B	38	ALA	LEU	ENGINEERED	UNP P0ABE7
B	41	TRP	GLN	ENGINEERED	UNP P0ABE7
B	42	SER	LYS	ENGINEERED	UNP P0ABE7
B	59	HIS	LYS	ENGINEERED	UNP P0ABE7
B	66	TRP	ASP	ENGINEERED	UNP P0ABE7
B	69	ILE	VAL	ENGINEERED	UNP P0ABE7
B	73	HIS	ASP	ENGINEERED	UNP P0ABE7
B	74	ALA	ASP	ENGINEERED	UNP P0ABE7
B	77	HIS	LYS	ENGINEERED	UNP P0ABE7
B	98	CYS	ARG	ENGINEERED	UNP P0ABE7

*Continued on next page...*

Continued from previous page...

Chain	Residue	Modelled	Actual	Comment	Reference
B	101	CYS	TYR	ENGINEERED	UNP P0ABE7
C	34	ALA	ARG	ENGINEERED	UNP P0ABE7
C	38	ALA	LEU	ENGINEERED	UNP P0ABE7
C	41	TRP	GLN	ENGINEERED	UNP P0ABE7
C	42	SER	LYS	ENGINEERED	UNP P0ABE7
C	59	HIS	LYS	ENGINEERED	UNP P0ABE7
C	66	TRP	ASP	ENGINEERED	UNP P0ABE7
C	69	ILE	VAL	ENGINEERED	UNP P0ABE7
C	73	HIS	ASP	ENGINEERED	UNP P0ABE7
C	74	ALA	ASP	ENGINEERED	UNP P0ABE7
C	77	HIS	LYS	ENGINEERED	UNP P0ABE7
C	98	CYS	ARG	ENGINEERED	UNP P0ABE7
C	101	CYS	TYR	ENGINEERED	UNP P0ABE7

- Molecule 2 is PROTOPORPHYRIN IX CONTAINING FE (three-letter code: HEM) (formula:  $C_{34}H_{32}FeN_4O_4$ ).



Mol	Chain	Residues	Atoms					ZeroOcc	AltConf
2	A	1	Total 43	C 34	Fe 1	N 4	O 4	0	0
2	B	1	Total 43	C 34	Fe 1	N 4	O 4	0	0
2	C	1	Total 43	C 34	Fe 1	N 4	O 4	0	0

- Molecule 3 is ZINC ION (three-letter code: ZN) (formula: Zn).

Mol	Chain	Residues	Atoms		ZeroOcc	AltConf
3	B	1	Total 1	Zn 1	0	0
3	A	1	Total 1	Zn 1	0	0

- Molecule 4 is water.

Mol	Chain	Residues	Atoms		ZeroOcc	AltConf
4	A	12	Total 12	O 12	0	0
4	B	2	Total 2	O 2	0	0
4	C	6	Total 6	O 6	0	0

### 3 Residue-property plots

These plots are drawn for all protein, RNA and DNA chains in the entry. The first graphic for a chain summarises the proportions of errors displayed in the second graphic. The second graphic shows the sequence view annotated by issues in geometry and electron density. Residues are color-coded according to the number of geometric quality criteria for which they contain at least one outlier: green = 0, yellow = 1, orange = 2 and red = 3 or more. A red dot above a residue indicates a poor fit to the electron density ( $RSRZ > 2$ ). Stretches of 2 or more consecutive residues without any outlier are shown as a green connector. Residues present in the sample, but not in the model, are shown in grey.

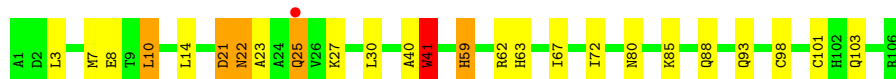
- Molecule 1: Soluble cytochrome b562

Chain A: 



- Molecule 1: Soluble cytochrome b562

Chain B: 



- Molecule 1: Soluble cytochrome b562

Chain C: 



## 4 Data and refinement statistics

Property	Value	Source
Space group	P 21 21 21	Depositor
Cell constants a, b, c, $\alpha$ , $\beta$ , $\gamma$	50.88Å 74.82Å 81.36Å 90.00° 90.00° 90.00°	Depositor
Resolution (Å)	23.90 – 2.60 23.93 – 2.60	Depositor EDS
% Data completeness (in resolution range)	99.7 (23.90-2.60) 99.8 (23.93-2.60)	Depositor EDS
$R_{merge}$	(Not available)	Depositor
$R_{sym}$	0.15	Depositor
$\langle I/\sigma(I) \rangle$ <sup>1</sup>	2.65 (at 2.60Å)	Xtriage
Refinement program	REFMAC 5.5.0102	Depositor
R, $R_{free}$	0.220 , 0.313 0.219 , 0.311	Depositor DCC
$R_{free}$ test set	679 reflections (7.29%)	DCC
Wilson B-factor (Å <sup>2</sup> )	18.3	Xtriage
Anisotropy	0.127	Xtriage
Bulk solvent $k_{sol}$ (e/Å <sup>3</sup> ), $B_{sol}$ (Å <sup>2</sup> )	0.37 , -5.3	EDS
Estimated twinning fraction	No twinning to report.	Xtriage
L-test for twinning	$\langle  L  \rangle = 0.48$ , $\langle L^2 \rangle = 0.31$	Xtriage
Outliers	0 of 9996 reflections	Xtriage
$F_o, F_c$ correlation	0.90	EDS
Total number of atoms	2609	wwPDB-VP
Average B, all atoms (Å <sup>2</sup> )	14.0	wwPDB-VP

Xtriage's analysis on translational NCS is as follows: *The largest off-origin peak in the Patterson function is 6.31% of the height of the origin peak. No significant pseudotranslation is detected.*

<sup>1</sup>Intensities estimated from amplitudes.

## 5 Model quality ⓘ

### 5.1 Standard geometry ⓘ

Bond lengths and bond angles in the following residue types are not validated in this section: HEM, ZN

The Z score for a bond length (or angle) is the number of standard deviations the observed value is removed from the expected value. A bond length (or angle) with  $|Z| > 5$  is considered an outlier worth inspection. RMSZ is the root-mean-square of all Z scores of the bond lengths (or angles).

Mol	Chain	Bond lengths		Bond angles	
		RMSZ	$\# Z  > 5$	RMSZ	$\# Z  > 5$
1	A	0.76	1/831 (0.1%)	0.77	0/1123
1	B	0.60	0/839	0.74	1/1134 (0.1%)
1	C	0.68	0/839	0.75	2/1134 (0.2%)
All	All	0.69	1/2509 (0.0%)	0.75	3/3391 (0.1%)

All (1) bond length outliers are listed below:

Mol	Chain	Res	Type	Atoms	Z	Observed(Å)	Ideal(Å)
1	A	92	GLU	CD-OE2	-5.08	1.20	1.25

All (3) bond angle outliers are listed below:

Mol	Chain	Res	Type	Atoms	Z	Observed(°)	Ideal(°)
1	B	41	TRP	CA-CB-CG	6.34	125.75	113.70
1	C	76	LEU	CA-CB-CG	6.29	129.76	115.30
1	C	94	LEU	CA-CB-CG	5.99	129.07	115.30

There are no chirality outliers.

There are no planarity outliers.

### 5.2 Close contacts ⓘ

In the following table, the Non-H and H(model) columns list the number of non-hydrogen atoms and hydrogen atoms in the chain respectively. The H(added) column lists the number of hydrogens added by MolProbity. The Clashes column lists the number of clashes within the asymmetric unit, and the number in parentheses is this value normalized per 1000 atoms of the molecule in the chain. The Symm-Clashes column gives symmetry related clashes, in the same way as for the Clashes column.



Mol	Chain	Non-H	H(model)	H(added)	Clashes	Symm-Clashes
1	A	816	0	792	13	0
1	B	821	0	798	27	0
1	C	821	0	798	24	0
2	A	43	0	30	5	0
2	B	43	0	30	17	0
2	C	43	0	30	16	0
3	A	1	0	0	0	0
3	B	1	0	0	0	0
4	A	12	0	0	0	0
4	B	2	0	0	0	0
4	C	6	0	0	0	0
All	All	2609	0	2478	66	0

Clashscore is defined as the number of clashes calculated for the entry per 1000 atoms (including hydrogens) of the entry. The overall clashscore for this entry is 13.

All (66) close contacts within the same asymmetric unit are listed below.

Atom-1	Atom-2	Distance(Å)	Clash(Å)
1:B:98:CYS:SG	2:B:150:HEM:HAB	1.41	1.60
1:B:101:CYS:SG	2:B:150:HEM:HAC	1.41	1.56
1:A:101:CYS:SG	2:A:150:HEM:HAC	1.56	1.45
1:A:101:CYS:SG	2:A:150:HEM:CAC	2.05	1.43
1:C:98:CYS:SG	2:C:150:HEM:CAB	2.10	1.39
1:C:101:CYS:SG	2:C:150:HEM:CAC	2.10	1.39
1:B:98:CYS:SG	2:B:150:HEM:CAB	2.14	1.36
1:B:101:CYS:SG	2:B:150:HEM:CAC	2.15	1.34
1:C:101:CYS:HG	2:C:150:HEM:CAC	1.42	1.30
1:C:98:CYS:SG	2:C:150:HEM:HAB	1.81	1.17
1:C:101:CYS:SG	2:C:150:HEM:HAC	1.88	1.08
1:C:98:CYS:HG	2:C:150:HEM:CAB	1.55	1.07
1:C:101:CYS:HG	2:C:150:HEM:HAC	1.21	0.89
1:B:63:HIS:NE2	1:C:63:HIS:HD2	1.77	0.81
1:B:98:CYS:HG	2:B:150:HEM:HAB	0.85	0.77
1:B:98:CYS:HG	2:B:150:HEM:CAB	1.80	0.76
1:C:101:CYS:SG	2:C:150:HEM:CBC	2.73	0.75
1:B:27:LYS:HD2	1:B:80:ASN:ND2	2.03	0.74
1:A:67:ILE:O	1:A:71:GLN:HG3	1.89	0.72
1:A:101:CYS:SG	2:A:150:HEM:C3C	2.83	0.71
1:B:98:CYS:SG	2:B:150:HEM:C3B	2.84	0.70
1:C:4:GLU:HG3	2:C:150:HEM:O1A	1.92	0.70
1:C:98:CYS:SG	2:C:150:HEM:CBB	2.78	0.69
1:C:98:CYS:SG	2:C:150:HEM:C3B	2.84	0.69
2:C:150:HEM:HBC2	2:C:150:HEM:HMC2	1.75	0.69

*Continued on next page...*

*Continued from previous page...*

Atom-1	Atom-2	Distance(Å)	Clash(Å)
1:B:101:CYS:HG	2:B:150:HEM:HAC	1.57	0.68
1:B:30:LEU:HD22	1:B:72:ILE:HG23	1.78	0.66
1:B:27:LYS:HD2	1:B:80:ASN:HD22	1.61	0.64
1:C:98:CYS:HG	2:C:150:HEM:CBB	2.10	0.62
1:C:101:CYS:SG	2:C:150:HEM:C3C	2.85	0.62
1:C:91:ALA:O	1:C:94:LEU:HD22	2.01	0.61
1:A:4:GLU:CD	1:A:4:GLU:H	2.04	0.60
1:B:101:CYS:SG	2:B:150:HEM:C3C	2.96	0.58
1:B:63:HIS:NE2	1:C:63:HIS:CD2	2.68	0.57
1:B:10:LEU:HG	2:B:150:HEM:HBB2	1.88	0.55
1:B:59:HIS:ND1	1:B:59:HIS:C	2.61	0.54
1:A:101:CYS:SG	2:A:150:HEM:CBC	2.87	0.54
1:B:85:LYS:HA	1:B:88:GLN:HE21	1.74	0.53
2:B:150:HEM:CMC	2:B:150:HEM:HBC2	2.40	0.52
1:C:46:PRO:HG2	2:C:150:HEM:O1D	2.10	0.52
1:A:30:LEU:HB3	1:A:76:LEU:HD13	1.92	0.52
1:A:30:LEU:CB	1:A:76:LEU:HD13	2.39	0.51
1:C:23:ALA:HB2	1:C:84:VAL:HG22	1.91	0.51
1:C:83:LYS:HB3	1:C:86:GLU:HG2	1.90	0.51
1:C:94:LEU:HD23	1:C:94:LEU:C	2.31	0.51
1:B:21:ASP:OD2	1:B:25:GLN:NE2	2.35	0.50
1:B:23:ALA:O	1:B:27:LYS:HG3	2.11	0.49
2:C:150:HEM:HBC2	2:C:150:HEM:CMC	2.42	0.48
1:B:41:TRP:O	1:B:62:ARG:HG2	2.14	0.47
1:A:63:HIS:HE1	1:C:70:GLY:O	1.98	0.46
1:A:70:GLY:O	1:C:63:HIS:HE1	1.99	0.46
2:B:150:HEM:HMC2	2:B:150:HEM:HBC2	1.97	0.46
1:B:10:LEU:HG	2:B:150:HEM:CBB	2.47	0.44
1:A:41:TRP:CZ3	1:A:62:ARG:HD2	2.53	0.44
1:B:21:ASP:N	1:B:21:ASP:OD2	2.26	0.43
1:B:40:ALA:O	1:B:41:TRP:C	2.56	0.43
1:C:78:LEU:HD22	1:C:86:GLU:HG3	2.01	0.43
2:B:150:HEM:HHA	2:B:150:HEM:HBA1	2.00	0.43
1:A:45:PRO:HG2	1:A:48:LEU:HB2	2.02	0.41
1:B:101:CYS:CB	2:B:150:HEM:CAC	2.94	0.41
1:B:7:MET:HB3	2:B:150:HEM:C4A	2.56	0.41
1:B:63:HIS:HE1	1:B:67:ILE:HD11	1.86	0.41
1:C:10:LEU:HD12	1:C:10:LEU:HA	1.96	0.40
2:B:150:HEM:CBC	2:B:150:HEM:HMC2	2.51	0.40
1:A:3:LEU:HD13	2:A:150:HEM:HBD2	2.02	0.40
1:B:22:ASN:HD22	1:B:22:ASN:N	2.19	0.40

There are no symmetry-related clashes.

## 5.3 Torsion angles

### 5.3.1 Protein backbone ⓘ

In the following table, the Percentiles column shows the percent Ramachandran outliers of the chain as a percentile score with respect to all X-ray entries followed by that with respect to entries of similar resolution. The Analysed column shows the number of residues for which the backbone conformation was analysed, and the total number of residues.

Mol	Chain	Analysed	Favoured	Allowed	Outliers	Percentiles	
1	A	104/106 (98%)	102 (98%)	2 (2%)	0	100	100
1	B	105/106 (99%)	102 (97%)	2 (2%)	1 (1%)	22	45
1	C	105/106 (99%)	102 (97%)	3 (3%)	0	100	100
All	All	314/318 (99%)	306 (98%)	7 (2%)	1 (0%)	50	77

All (1) Ramachandran outliers are listed below:

Mol	Chain	Res	Type
1	B	41	TRP

### 5.3.2 Protein sidechains ⓘ

In the following table, the Percentiles column shows the percent sidechain outliers of the chain as a percentile score with respect to all X-ray entries followed by that with respect to entries of similar resolution. The Analysed column shows the number of residues for which the sidechain conformation was analysed, and the total number of residues.

Mol	Chain	Analysed	Rotameric	Outliers	Percentiles	
1	A	83/83 (100%)	75 (90%)	8 (10%)	12	22
1	B	84/83 (101%)	73 (87%)	11 (13%)	6	11
1	C	84/83 (101%)	78 (93%)	6 (7%)	21	40
All	All	251/249 (101%)	226 (90%)	25 (10%)	11	20

All (25) residues with a non-rotameric sidechain are listed below:

Mol	Chain	Res	Type
1	A	3	LEU
1	A	4	GLU
1	A	10	LEU
1	A	28	ASP
1	A	83	LYS

*Continued on next page...*

*Continued from previous page...*

Mol	Chain	Res	Type
1	A	92	GLU
1	A	94	LEU
1	A	106	ARG
1	B	3	LEU
1	B	8	GLU
1	B	10	LEU
1	B	14	LEU
1	B	21	ASP
1	B	22	ASN
1	B	25	GLN
1	B	41	TRP
1	B	59	HIS
1	B	93	GLN
1	B	103	GLN
1	C	4	GLU
1	C	10	LEU
1	C	47	LYS
1	C	65	PHE
1	C	83	LYS
1	C	94	LEU

Some sidechains can be flipped to improve hydrogen bonding and reduce clashes. All (18) such sidechains are listed below:

Mol	Chain	Res	Type
1	A	13	ASN
1	A	25	GLN
1	A	63	HIS
1	A	71	GLN
1	A	80	ASN
1	A	88	GLN
1	A	93	GLN
1	B	13	ASN
1	B	22	ASN
1	B	80	ASN
1	B	88	GLN
1	B	99	ASN
1	C	13	ASN
1	C	25	GLN
1	C	63	HIS
1	C	80	ASN
1	C	99	ASN
1	C	103	GLN

### 5.3.3 RNA ⓘ

There are no RNA chains in this entry.

## 5.4 Non-standard residues in protein, DNA, RNA chains ⓘ

There are no non-standard protein/DNA/RNA residues in this entry.

## 5.5 Carbohydrates ⓘ

There are no carbohydrates in this entry.

## 5.6 Ligand geometry ⓘ

Of 5 ligands modelled in this entry, 2 are monoatomic - leaving 3 for Mogul analysis.

In the following table, the Counts columns list the number of bonds (or angles) for which Mogul statistics could be retrieved, the number of bonds (or angles) that are observed in the model and the number of bonds (or angles) that are defined in the chemical component dictionary. The Link column lists molecule types, if any, to which the group is linked. The Z score for a bond length (or angle) is the number of standard deviations the observed value is removed from the expected value. A bond length (or angle) with  $|Z| > 2$  is considered an outlier worth inspection. RMSZ is the root-mean-square of all Z scores of the bond lengths (or angles).

Mol	Type	Chain	Res	Link	Bond lengths			Bond angles		
					Counts	RMSZ	$\# Z  > 2$	Counts	RMSZ	$\# Z  > 2$
2	HEM	A	150	1	49,50,50	2.04	10 (20%)	46,82,82	1.83	7 (15%)
2	HEM	B	150	1	49,50,50	2.83	20 (40%)	46,82,82	2.34	16 (34%)
2	HEM	C	150	1	49,50,50	2.25	13 (26%)	46,82,82	2.11	9 (19%)

In the following table, the Chirals column lists the number of chiral outliers, the number of chiral centers analysed, the number of these observed in the model and the number defined in the chemical component dictionary. Similar counts are reported in the Torsion and Rings columns. '-' means no outliers of that kind were identified.

Mol	Type	Chain	Res	Link	Chirals	Torsions	Rings
2	HEM	A	150	1	-	0/14/114/114	0/0/8/8
2	HEM	B	150	1	-	0/14/114/114	0/0/8/8
2	HEM	C	150	1	-	0/14/114/114	0/0/8/8

All (43) bond length outliers are listed below:

Mol	Chain	Res	Type	Atoms	Z	Observed(Å)	Ideal(Å)
2	B	150	HEM	C2D-C1D	9.79	1.47	1.44
2	A	150	HEM	C3B-C2B	-6.12	1.33	1.43
2	B	150	HEM	C3C-C2C	-6.00	1.33	1.43
2	C	150	HEM	C3C-C2C	-5.83	1.33	1.43
2	B	150	HEM	C3B-C2B	-5.64	1.33	1.43
2	B	150	HEM	FE-NA	5.61	2.16	1.92
2	B	150	HEM	C3D-C2D	5.56	1.53	1.43
2	C	150	HEM	C3D-C2D	5.35	1.53	1.43
2	C	150	HEM	C3B-C2B	-5.25	1.34	1.43
2	A	150	HEM	C3C-C2C	-5.20	1.34	1.43
2	C	150	HEM	C3B-CAB	5.16	1.56	1.40
2	A	150	HEM	C3B-CAB	4.88	1.55	1.40
2	C	150	HEM	C3C-CAC	4.69	1.55	1.40
2	B	150	HEM	C3C-CAC	4.55	1.54	1.40
2	B	150	HEM	C3B-CAB	4.45	1.54	1.40
2	A	150	HEM	C3C-CAC	4.36	1.54	1.40
2	B	150	HEM	C4A-C3A	4.27	1.45	1.40
2	A	150	HEM	C3D-C2D	4.22	1.51	1.43
2	B	150	HEM	C2B-C1B	3.99	1.45	1.44
2	C	150	HEM	C4A-C3A	3.95	1.45	1.40
2	C	150	HEM	FE-ND	3.85	2.11	1.97
2	C	150	HEM	FE-NC	3.67	2.11	1.97
2	B	150	HEM	C3D-C4D	3.55	1.45	1.44
2	A	150	HEM	C4A-C3A	3.42	1.44	1.40
2	B	150	HEM	CAA-C2A	2.88	1.57	1.52
2	C	150	HEM	C2B-C1B	2.86	1.45	1.44
2	A	150	HEM	C3D-C4D	2.78	1.45	1.44
2	B	150	HEM	FE-ND	2.74	2.07	1.97
2	B	150	HEM	CHA-C4D	2.73	1.39	1.35
2	A	150	HEM	CMD-C2D	2.58	1.55	1.47
2	B	150	HEM	CMD-C2D	2.56	1.55	1.47
2	C	150	HEM	FE-NA	2.55	2.03	1.92
2	C	150	HEM	CMC-C2C	2.52	1.55	1.47
2	B	150	HEM	C1A-C2A	2.51	1.47	1.43
2	C	150	HEM	CMB-C2B	2.46	1.55	1.47
2	C	150	HEM	CMD-C2D	2.42	1.54	1.47
2	B	150	HEM	CHB-C1B	2.35	1.39	1.35
2	B	150	HEM	CMB-C2B	2.29	1.54	1.47
2	B	150	HEM	FE-NB	2.27	2.06	1.97
2	A	150	HEM	C1A-C2A	2.17	1.47	1.43
2	B	150	HEM	FE-NC	2.15	2.05	1.97
2	A	150	HEM	FE-ND	2.13	2.05	1.97
2	B	150	HEM	CMC-C2C	2.05	1.53	1.47

All (32) bond angle outliers are listed below:

Mol	Chain	Res	Type	Atoms	Z	Observed(°)	Ideal(°)
2	C	150	HEM	C3B-C4B-NB	-8.47	107.94	114.00
2	B	150	HEM	C3B-C4B-NB	-8.01	108.27	114.00
2	B	150	HEM	C4D-ND-C1D	7.32	112.66	105.16
2	C	150	HEM	C4D-ND-C1D	5.98	111.28	105.16
2	A	150	HEM	C3B-C4B-NB	-5.97	109.73	114.00
2	A	150	HEM	C4D-ND-C1D	5.75	111.05	105.16
2	B	150	HEM	C2D-C1D-ND	-4.98	107.05	112.93
2	A	150	HEM	CBD-CAD-C3D	-4.47	104.61	114.37
2	C	150	HEM	CBA-CAA-C2A	-3.68	106.20	112.69
2	C	150	HEM	C2D-C1D-ND	-3.30	109.03	112.93
2	A	150	HEM	C2D-C1D-ND	-2.99	109.40	112.93
2	A	150	HEM	CHC-C1C-NC	2.97	127.31	124.73
2	B	150	HEM	C1B-NB-C4B	2.91	108.14	105.16
2	B	150	HEM	C1A-CHA-C4D	2.81	131.17	127.47
2	C	150	HEM	C1B-NB-C4B	2.73	107.96	105.16
2	B	150	HEM	CBD-CAD-C3D	-2.70	108.48	114.37
2	B	150	HEM	C4C-NC-C1C	2.67	108.31	105.53
2	C	150	HEM	C4C-NC-C1C	2.66	108.30	105.53
2	B	150	HEM	CHC-C1C-NC	2.62	127.01	124.73
2	C	150	HEM	C4A-CHB-C1B	-2.58	124.07	127.47
2	B	150	HEM	CMA-C3A-C4A	-2.49	124.79	128.62
2	B	150	HEM	CAD-C3D-C4D	2.43	128.90	124.53
2	B	150	HEM	CHC-C4B-NB	2.43	126.60	124.58
2	A	150	HEM	CBA-CAA-C2A	-2.40	108.47	112.69
2	B	150	HEM	CHD-C1D-ND	2.40	126.58	124.58
2	C	150	HEM	CHC-C4B-NB	2.37	126.56	124.58
2	B	150	HEM	C3A-C4A-NA	-2.22	107.73	109.41
2	B	150	HEM	CAA-C2A-C3A	-2.22	122.67	129.00
2	B	150	HEM	CHA-C4D-ND	2.13	127.24	124.31
2	B	150	HEM	C4A-C3A-C2A	2.08	108.45	107.00
2	A	150	HEM	CMA-C3A-C4A	-2.08	125.42	128.62
2	C	150	HEM	O1D-CGD-CBD	-2.03	116.04	123.03

There are no chirality outliers.

There are no torsion outliers.

There are no ring outliers.

## 5.7 Other polymers ⓘ

There are no such residues in this entry.

## 5.8 Polymer linkage issues

There are no chain breaks in this entry.



## 6 Fit of model and data ⓘ

### 6.1 Protein, DNA and RNA chains ⓘ

In the following table, the column labelled ‘#RSRZ> 2’ contains the number (and percentage) of RSRZ outliers, followed by percent RSRZ outliers for the chain as percentile scores relative to all X-ray entries and entries of similar resolution. The OWAB column contains the minimum, median, 95<sup>th</sup> percentile and maximum values of the occupancy-weighted average B-factor per residue. The column labelled ‘Q< 0.9’ lists the number of (and percentage) of residues with an average occupancy less than 0.9.

Mol	Chain	Analysed	<RSRZ>	#RSRZ>2	OWAB(Å <sup>2</sup> )	Q<0.9
1	A	106/106 (100%)	-0.23	0 100 100	5, 13, 23, 25	0
1	B	106/106 (100%)	-0.15	1 (0%) 81 82	2, 15, 26, 32	0
1	C	106/106 (100%)	-0.01	4 (3%) 38 35	5, 14, 25, 28	0
All	All	318/318 (100%)	-0.13	5 (1%) 70 69	2, 14, 25, 32	0

All (5) RSRZ outliers are listed below:

Mol	Chain	Res	Type	RSRZ
1	C	54[A]	ASP	3.1
1	C	53	PRO	2.9
1	C	50	ASP	2.2
1	B	25	GLN	2.2
1	C	1	ALA	2.0

### 6.2 Non-standard residues in protein, DNA, RNA chains ⓘ

There are no non-standard protein/DNA/RNA residues in this entry.

### 6.3 Carbohydrates ⓘ

There are no carbohydrates in this entry.

### 6.4 Ligands ⓘ

In the following table, the Atoms column lists the number of modelled atoms in the group and the number defined in the chemical component dictionary. LLDF column lists the quality of electron density of the group with respect to its neighbouring residues in protein, DNA or RNA chains. The B-factors column lists the minimum, median, 95<sup>th</sup> percentile and maximum values of B factors

of atoms in the group. The column labelled 'Q < 0.9' lists the number of atoms with occupancy less than 0.9.

Mol	Type	Chain	Res	Atoms	RSR	LLDF	B-factors( $\text{\AA}^2$ )	Q<0.9
2	HEM	B	150	43/43	0.17	-0.02	6,12,27,31	0
2	HEM	A	150	43/43	0.15	-0.03	2,6,11,14	0
2	HEM	C	150	43/43	0.14	-0.41	2,7,13,14	0
3	ZN	A	107	1/1	0.06	-2.60	17,17,17,17	0
3	ZN	B	107	1/1	0.05	-12.56	12,12,12,12	0

## 6.5 Other polymers ⓘ

There are no such residues in this entry.