



# wwPDB X-ray Structure Validation Summary Report

Feb 27, 2014 – 02:56 PM GMT

PDB ID : 3M1V  
Title : Structural Insight into Methyl-Coenzyme M Reductase Chemistry using Coenzyme B Analogues  
Authors : Cedervall, P.E.; Dey, M.; Ragsdale, S.W.; Wilmot, C.M.  
Deposited on : 2010-03-05  
Resolution : 1.45 Å(reported)

This is a wwPDB validation summary report for a publicly released PDB entry.

We welcome your comments at [validation@mail.wwpdb.org](mailto:validation@mail.wwpdb.org)

A user guide is available at <http://wwpdb.org/ValidationPDFNotes.html>

---

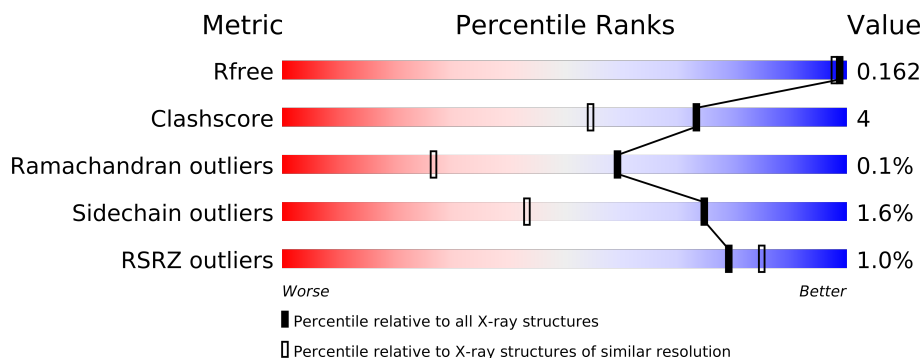
The following versions of software and data (see [references](#)) were used in the production of this report:

MolProbity	:	4.02b-467
Mogul	:	1.15 2013
Xtriage (Phenix)	:	dev-1323
EDS	:	stable22639
Percentile statistics	:	21963
Refmac	:	5.8.0049
CCP4	:	6.3.0 (Settle)
Ideal geometry (proteins)	:	Engh & Huber (2001)
Ideal geometry (DNA, RNA)	:	Parkinson et. al. (1996)
Validation Pipeline (wwPDB-VP)	:	stable22683

# 1 Overall quality at a glance

The reported resolution of this entry is 1.45 Å.

Percentile scores (ranging between 0-100) for global validation metrics of the entry are shown in the following graphic. The table shows the number of entries on which the scores are based.



Metric	Whole archive (#Entries)	Similar resolution (#Entries, resolution range(Å))
$R_{free}$	66092	2476 (1.50-1.42)
Clashscore	79885	2834 (1.50-1.42)
Ramachandran outliers	78287	2769 (1.50-1.42)
Sidechain outliers	78261	2767 (1.50-1.42)
RSRZ outliers	66119	2477 (1.50-1.42)

The table below summarises the geometric issues observed across the polymeric chains and their fit to the electron density. The red, orange, yellow and green segments on the lower bar indicate the fraction of residues that contain outliers for  $\geq 3$ , 2, 1 and 0 types of geometric quality criteria. The upper red bar (where present) indicates the fraction of residues that have poor fit to the electron density.

Mol	Chain	Length	Quality of chain
1	A	549	
1	D	549	
2	B	442	
2	E	442	
3	C	248	
3	F	248	

The following table lists non-polymeric compounds that are outliers for geometric or electron-density-fit criteria:

Mol	Type	Chain	Res	Geometry	Electron density
4	MG	A	551[B]	-	X
4	MG	A	552[A]	-	X

*Continued on next page...*

*Continued from previous page...*

Mol	Type	Chain	Res	Geometry	Electron density
4	MG	B	444	-	X
4	MG	B	445	-	X
4	MG	C	250	-	X
4	MG	D	1	-	X
4	MG	D	551	-	X
4	MG	E	444	-	X
4	MG	F	250	-	X
6	TP7	A	553[A]	-	X
8	ACT	A	556[B]	-	X
8	ACT	B	446[B]	-	X
8	ACT	C	1	-	X
9	PEG	A	557	-	X

## 2 Entry composition

There are 12 unique types of molecules in this entry. The entry contains 23013 atoms, of which 0 are hydrogen and 0 are deuterium.

In the tables below, the ZeroOcc column contains the number of atoms modelled with zero occupancy, the AltConf column contains the number of residues with at least one atom in alternate conformation and the Trace column contains the number of residues modelled with at most 2 atoms.

- Molecule 1 is a protein called Methyl-coenzyme M reductase I subunit alpha.

Mol	Chain	Residues	Atoms					ZeroOcc	AltConf	Trace
1	A	548	Total	C	N	O	S	0	54	0
			4639	2933	771	914	21			
1	D	548	Total	C	N	O	S	0	30	0
			4423	2816	725	862	20			

- Molecule 2 is a protein called Methyl-coenzyme M reductase I subunit beta.

Mol	Chain	Residues	Atoms					ZeroOcc	AltConf	Trace
2	B	442	Total	C	N	O	S	0	28	0
			3485	2225	566	672	22			
2	E	442	Total	C	N	O	S	0	41	0
			3574	2282	581	689	22			

- Molecule 3 is a protein called Methyl-coenzyme M reductase I subunit gamma.

Mol	Chain	Residues	Atoms					ZeroOcc	AltConf	Trace
3	C	246	Total	C	N	O	S	0	12	0
			2063	1279	359	412	13			
3	F	246	Total	C	N	O	S	0	16	0
			2081	1295	362	412	12			

- Molecule 4 is MAGNESIUM ION (three-letter code: MG) (formula: Mg).

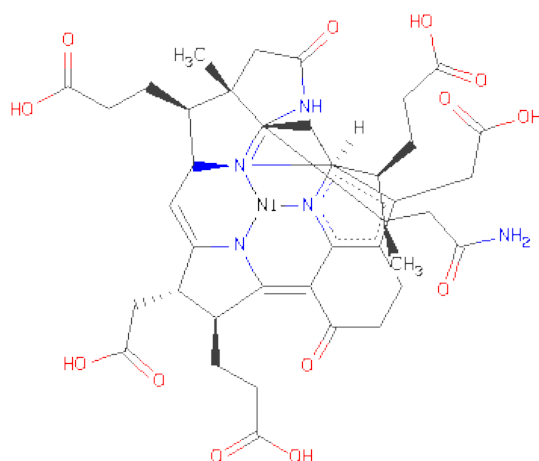
Mol	Chain	Residues	Atoms		ZeroOcc	AltConf
4	D	2	Total	Mg	0	0
			2	2		
4	E	1	Total	Mg	0	0
			1	1		
4	B	2	Total	Mg	0	0
			2	2		
4	C	1	Total	Mg	0	0
			1	1		

*Continued on next page...*

Continued from previous page...

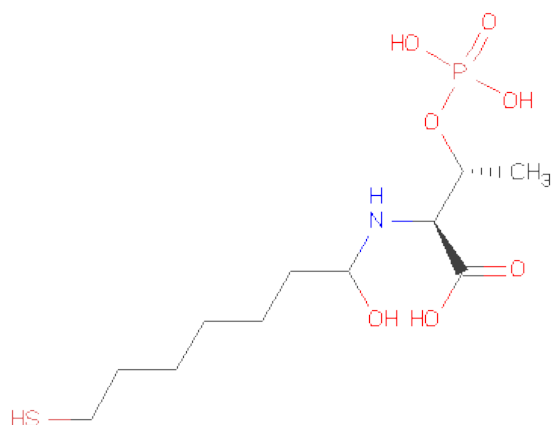
Mol	Chain	Residues	Atoms		ZeroOcc	AltConf
4	A	2	Total	Mg	0	2
			2	2		
4	F	1	Total	Mg	0	0
			1	1		

- Molecule 5 is FACTOR 430 (three-letter code: F43) (formula:  $C_{42}H_{49}N_6NiO_{13}$ ).



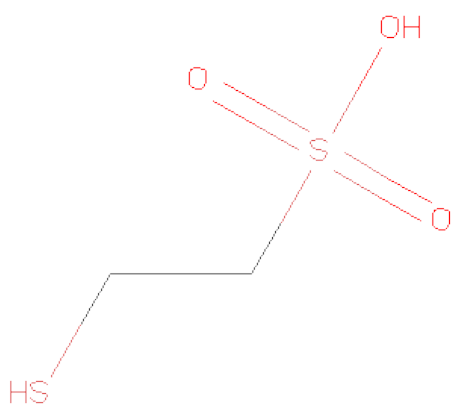
Mol	Chain	Residues	Atoms					ZeroOcc	AltConf
5	A	1	Total	C	N	Ni	O	0	0
			62	42	6	1	13		
5	D	1	Total	C	N	Ni	O	0	0
			62	42	6	1	13		

- Molecule 6 is PHOSPHORIC ACID N-(1-HYDROXY-7-MERCAPTO-HEPTYL)THREONINEESTER (three-letter code: TP7) (formula:  $C_{11}H_{24}NO_7PS$ ).



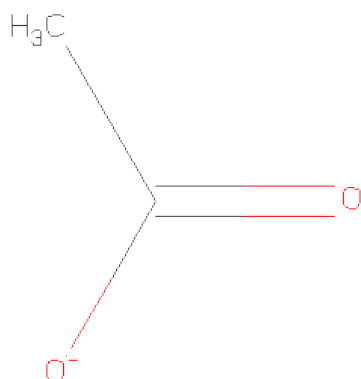
Mol	Chain	Residues	Atoms						ZeroOcc	AltConf
6	A	1	Total	C	N	O	P	S	0	1
			21	11	1	7	1	1		
6	D	1	Total	C	N	O	P	S	0	1
			21	11	1	7	1	1		

- Molecule 7 is 1-THIOETHANESULFONIC ACID (three-letter code: COM) (formula:  $C_2H_6O_3S_2$ ).



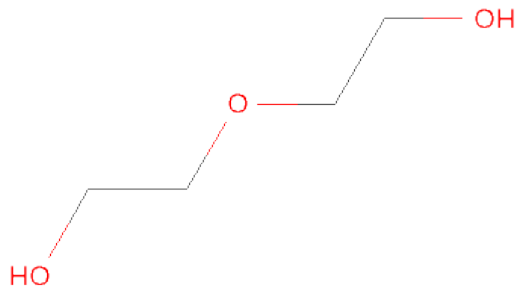
Mol	Chain	Residues	Atoms				ZeroOcc	AltConf
7	A	1	Total	C	O	S	0	0
			7	2	3	2		
7	D	1	Total	C	O	S	0	0
			7	2	3	2		

- Molecule 8 is ACETATE ION (three-letter code: ACT) (formula:  $C_2H_3O_2$ ).



Mol	Chain	Residues	Atoms			ZeroOcc	AltConf
8	A	1	Total	C	O	0	1
			4	2	2		
8	A	1	Total	C	O	0	1
			4	2	2		
8	B	1	Total	C	O	0	1
			4	2	2		
8	C	1	Total	C	O	0	0
			4	2	2		

- Molecule 9 is DI(HYDROXYETHYL)ETHER (three-letter code: PEG) (formula:  $C_4H_{10}O_3$ ).

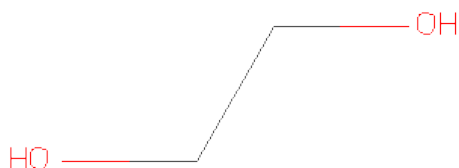


Mol	Chain	Residues	Atoms			ZeroOcc	AltConf
9	A	1	Total	C	O	0	0
			7	4	3		
9	C	1	Total	C	O	0	0
			7	4	3		

- Molecule 10 is ZINC ION (three-letter code: ZN) (formula: Zn).

Mol	Chain	Residues	Atoms		ZeroOcc	AltConf
10	A	1	Total	Zn	0	0
			1	1		

- Molecule 11 is 1,2-ETHANEDIOL (three-letter code: EDO) (formula: C<sub>2</sub>H<sub>6</sub>O<sub>2</sub>).



Mol	Chain	Residues	Atoms			ZeroOcc	AltConf
11	D	1	Total	C	O	0	0
			4	2	2		
11	F	1	Total	C	O	0	0
			4	2	2		
11	F	1	Total	C	O	0	0
			4	2	2		

- Molecule 12 is water.

Mol	Chain	Residues	Atoms		ZeroOcc	AltConf
12	A	524	Total	O	0	36
			533	533		

*Continued on next page...*



*Continued from previous page...*

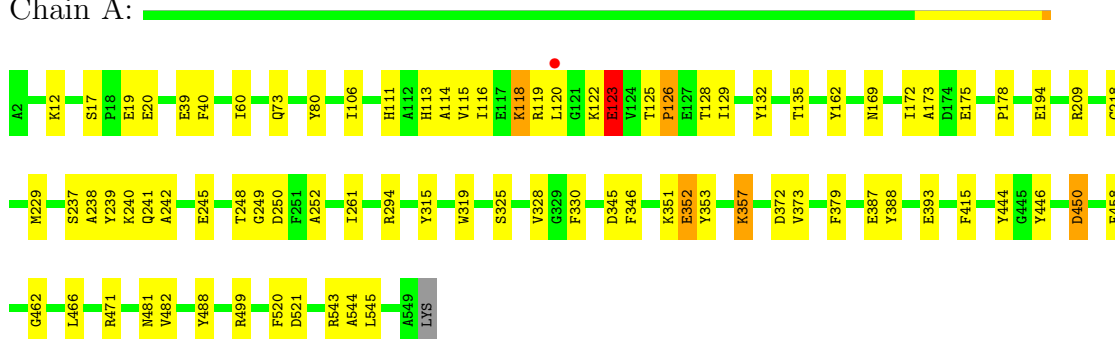
Mol	Chain	Residues	Atoms		ZeroOcc	AltConf
12	B	456	Total 470	O 470	0	27
12	C	262	Total 271	O 271	0	11
12	D	537	Total 547	O 547	0	27
12	E	419	Total 426	O 426	0	16
12	F	264	Total 269	O 269	0	9

### 3 Residue-property plots

These plots are drawn for all protein, RNA and DNA chains in the entry. The first graphic for a chain summarises the proportions of errors displayed in the second graphic. The second graphic shows the sequence view annotated by issues in geometry and electron density. Residues are color-coded according to the number of geometric quality criteria for which they contain at least one outlier: green = 0, yellow = 1, orange = 2 and red = 3 or more. A red dot above a residue indicates a poor fit to the electron density ( $RSRZ > 2$ ). Stretches of 2 or more consecutive residues without any outlier are shown as a green connector. Residues present in the sample, but not in the model, are shown in grey.

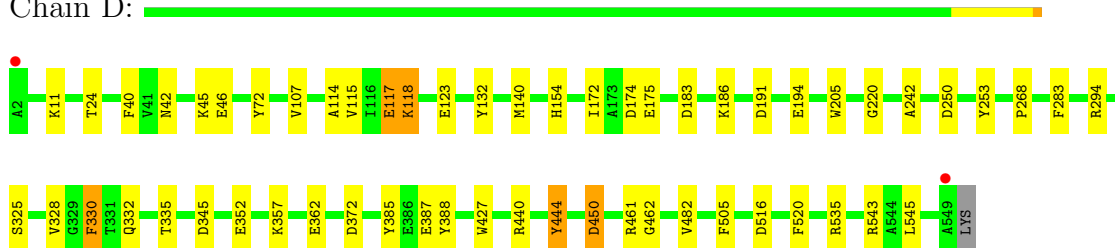
- Molecule 1: Methyl-coenzyme M reductase I subunit alpha

Chain A:



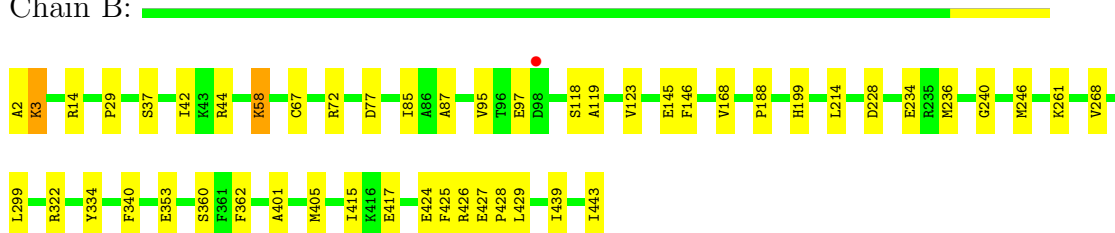
- Molecule 1: Methyl-coenzyme M reductase I subunit alpha

Chain D:



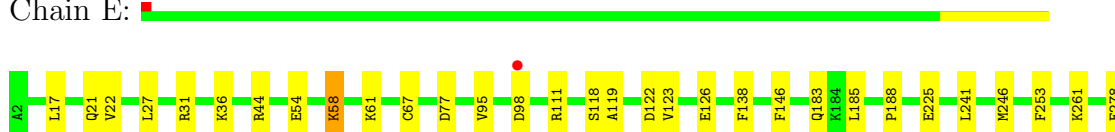
- Molecule 2: Methyl-coenzyme M reductase I subunit beta

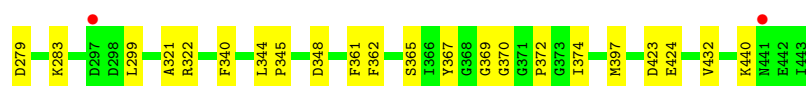
Chain B:



- Molecule 2: Methyl-coenzyme M reductase I subunit beta

Chain E:





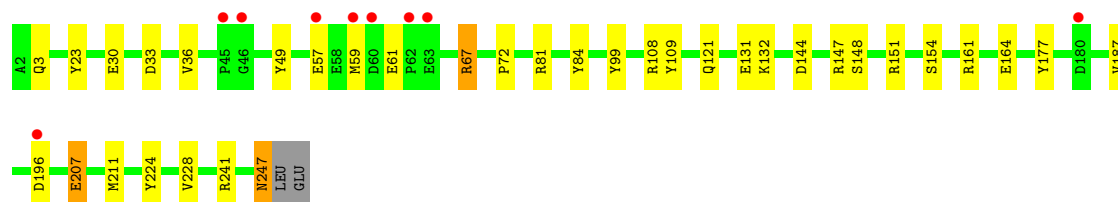
- Molecule 3: Methyl-coenzyme M reductase I subunit gamma

Chain C:



- Molecule 3: Methyl-coenzyme M reductase I subunit gamma

Chain F:



## 4 Data and refinement statistics

Property	Value	Source
Space group	P 1 21 1	Depositor
Cell constants a, b, c, $\alpha$ , $\beta$ , $\gamma$	82.02Å 118.26Å 122.39Å 90.00° 91.84° 90.00°	Depositor
Resolution (Å)	20.15 – 1.45 20.11 – 1.45	Depositor EDS
% Data completeness (in resolution range)	98.8 (20.15-1.45) 98.8 (20.11-1.45)	Depositor EDS
$R_{merge}$	0.06	Depositor
$R_{sym}$	(Not available)	Depositor
$\langle I/\sigma(I) \rangle$ <sup>1</sup>	3.42 (at 1.45Å)	Xtriage
Refinement program	REFMAC 5.5.0072	Depositor
R, $R_{free}$	0.135 , 0.162 0.135 , 0.162	Depositor DCC
$R_{free}$ test set	20362 reflections (5.29%)	DCC
Wilson B-factor (Å <sup>2</sup> )	10.6	Xtriage
Anisotropy	0.019	Xtriage
Bulk solvent $k_{sol}$ (e/Å <sup>3</sup> ), $B_{sol}$ (Å <sup>2</sup> )	0.37 , 37.9	EDS
Estimated twinning fraction	0.000 for -h,l,k 0.009 for -h,-l,-k 0.014 for h,-k,-l	Xtriage
L-test for twinning	$\langle  L  \rangle = 0.50$ , $\langle L^2 \rangle = 0.33$	Xtriage
Outliers	0 of 405229 reflections	Xtriage
$F_o, F_c$ correlation	0.98	EDS
Total number of atoms	23013	wwPDB-VP
Average B, all atoms (Å <sup>2</sup> )	13.0	wwPDB-VP

Xtriage's analysis on translational NCS is as follows: *The largest off-origin peak in the Patterson function is 3.85% of the height of the origin peak. No significant pseudotranslation is detected.*

<sup>1</sup>Intensities estimated from amplitudes.

## 5 Model quality

### 5.1 Standard geometry

Bond lengths and bond angles in the following residue types are not validated in this section: ZN, PEG, SMC, ACT, MG, F43, MGN, TP7, AGM, EDO, GL3, COM, MHS

The Z score for a bond length (or angle) is the number of standard deviations the observed value is removed from the expected value. A bond length (or angle) with  $|Z| > 5$  is considered an outlier worth inspection. RMSZ is the root-mean-square of all Z scores of the bond lengths (or angles).

Mol	Chain	Bond lengths		Bond angles	
		RMSZ	$\# Z  > 5$	RMSZ	$\# Z  > 5$
1	A	1.56	20/4732 (0.4%)	1.31	22/6422 (0.3%)
1	D	1.53	16/4550 (0.4%)	1.31	17/6173 (0.3%)
2	B	1.50	15/3607 (0.4%)	1.26	9/4877 (0.2%)
2	E	1.55	9/3702 (0.2%)	1.27	11/5003 (0.2%)
3	C	1.52	4/2127 (0.2%)	1.30	11/2864 (0.4%)
3	F	1.56	11/2166 (0.5%)	1.34	15/2914 (0.5%)
All	All	1.54	75/20884 (0.4%)	1.30	85/28253 (0.3%)

Chiral center outliers are detected by calculating the chiral volume of a chiral center and verifying if the center is modelled as a planar moiety or with the opposite hand. A planarity outlier is detected by checking planarity of atoms in a peptide group, atoms in a mainchain group or atoms of a sidechain that are expected to be planar.

Mol	Chain	#Chirality outliers	#Planarity outliers
1	A	1	1
1	D	1	0
All	All	2	1

The worst 5 of 75 bond length outliers are listed below:

Mol	Chain	Res	Type	Atoms	Z	Observed(Å)	Ideal(Å)
2	E	340	PHE	CE1-CZ	6.05	1.48	1.37
1	A	319	TRP	CD2-CE2	6.03	1.48	1.41
2	E	54	GLU	CD-OE1	-5.92	1.19	1.25
3	F	30	GLU	CD-OE2	5.91	1.32	1.25
3	F	177	TYR	CD1-CE1	5.90	1.48	1.39

The worst 5 of 85 bond angle outliers are listed below:

Mol	Chain	Res	Type	Atoms	Z	Observed(°)	Ideal(°)
3	C	147	ARG	NE-CZ-NH1	8.59	124.60	120.30
2	B	72	ARG	NE-CZ-NH2	-7.86	116.37	120.30
3	F	131	GLU	OE1-CD-OE2	7.74	132.58	123.30
3	F	147	ARG	NE-CZ-NH1	7.33	123.97	120.30
2	B	44	ARG	NE-CZ-NH1	7.21	123.91	120.30

All (2) chirality outliers are listed below:

Mol	Chain	Res	Type	Atom
1	A	450	ASP	CA
1	D	450	ASP	CA

All (1) planarity outliers are listed below:

Mol	Chain	Res	Type	Group
1	A	123[B]	GLU	Peptide

## 5.2 Close contacts ⓘ

In the following table, the Non-H and H(model) columns list the number of non-hydrogen atoms and hydrogen atoms in the chain respectively. The H(added) column lists the number of hydrogens added by MolProbity. The Clashes column lists the number of clashes within the asymmetric unit, and the number in parentheses is this value normalized per 1000 atoms of the molecule in the chain. The Symm-Clashes column gives symmetry related clashes, in the same way as for the Clashes column.

Mol	Chain	Non-H	H(model)	H(added)	Clashes	Symm-Clashes
1	A	4639	0	4437	59	0
1	D	4423	0	4292	30	0
2	B	3485	0	3548	25	0
2	E	3574	0	3636	37	0
3	C	2063	0	1998	20	0
3	F	2081	0	2045	17	0
4	A	2	0	0	0	0
4	B	2	0	0	0	0
4	C	1	0	0	0	0
4	D	2	0	0	0	0
4	E	1	0	0	0	0
4	F	1	0	0	0	0
5	A	62	0	43	1	0
5	D	62	0	43	1	0
6	A	21	0	17	3	0

*Continued on next page...*

*Continued from previous page...*

Mol	Chain	Non-H	H(model)	H(added)	Clashes	Symm-Clashes
6	D	21	0	17	2	0
7	A	7	0	4	0	0
7	D	7	0	4	0	0
8	A	8	0	5	0	0
8	B	4	0	2	0	0
8	C	4	0	3	2	0
9	A	7	0	10	0	0
9	C	7	0	10	0	0
10	A	1	0	0	0	0
11	D	4	0	6	0	0
11	F	8	0	12	0	0
12	A	533	0	0	7	0
12	B	470	0	0	7	0
12	C	271	0	0	6	0
12	D	547	0	0	13	0
12	E	426	0	0	19	0
12	F	269	0	0	9	0
All	All	23013	0	20132	170	0

Clashscore is defined as the number of clashes calculated for the entry per 1000 atoms (including hydrogens) of the entry. The overall clashscore for this entry is 4.

The worst 5 of 170 close contacts within the same asymmetric unit are listed below.

Atom-1	Atom-2	Distance(Å)	Clash(Å)
1:A:169[A]:ASN:ND2	1:A:172:ILE:HD13	1.49	1.27
2:B:322[B]:ARG:NH2	3:C:67[B]:ARG:HG3	1.58	1.19
1:A:126[B]:PRO:CB	1:A:175[B]:GLU:HG2	1.93	0.99
1:A:249:GLY:O	2:E:369[B]:GLY:HA3	1.65	0.95
1:A:169[A]:ASN:ND2	1:A:172:ILE:CD1	2.29	0.94

There are no symmetry-related clashes.

## 5.3 Torsion angles

### 5.3.1 Protein backbone ⓘ

In the following table, the Percentiles column shows the percent Ramachandran outliers of the chain as a percentile score with respect to all X-ray entries followed by that with respect to entries of similar resolution. The Analysed column shows the number of residues for which the backbone conformation was analysed, and the total number of residues.

Mol	Chain	Analysed	Favoured	Allowed	Outliers	Percentiles	
1	A	595/549 (108%)	570 (96%)	24 (4%)	1 (0%)	56	25
1	D	571/549 (104%)	548 (96%)	22 (4%)	1 (0%)	56	25
2	B	469/442 (106%)	462 (98%)	7 (2%)	0	100	100
2	E	482/442 (109%)	473 (98%)	9 (2%)	0	100	100
3	C	256/248 (103%)	249 (97%)	7 (3%)	0	100	100
3	F	260/248 (105%)	255 (98%)	5 (2%)	0	100	100
All	All	2633/2478 (106%)	2557 (97%)	74 (3%)	2 (0%)	59	27

All (2) Ramachandran outliers are listed below:

Mol	Chain	Res	Type
1	A	325	SER
1	D	325	SER

### 5.3.2 Protein sidechains ⓘ

In the following table, the Percentiles column shows the percent sidechain outliers of the chain as a percentile score with respect to all X-ray entries followed by that with respect to entries of similar resolution. The Analysed column shows the number of residues for which the sidechain conformation was analysed, and the total number of residues.

Mol	Chain	Analysed	Rotameric	Outliers	Percentiles	
1	A	481/434 (111%)	468 (97%)	13 (3%)	57	20
1	D	463/434 (107%)	456 (98%)	7 (2%)	76	46
2	B	369/341 (108%)	364 (99%)	5 (1%)	78	50
2	E	378/341 (111%)	372 (98%)	6 (2%)	75	43
3	C	226/216 (105%)	223 (99%)	3 (1%)	80	52
3	F	230/216 (106%)	219 (95%)	11 (5%)	35	6
All	All	2147/1982 (108%)	2102 (98%)	45 (2%)	75	29

5 of 45 residues with a non-rotameric sidechain are listed below:

Mol	Chain	Res	Type
3	C	121	GLN
1	D	444	TYR
3	F	148[B]	SER
1	D	118[B]	LYS
1	D	450	ASP



Some sidechains can be flipped to improve hydrogen bonding and reduce clashes. All (5) such sidechains are listed below:

Mol	Chain	Res	Type
1	A	42	ASN
3	C	121	GLN
1	D	241	GLN
3	F	121	GLN
3	F	247	ASN

### 5.3.3 RNA ⓘ

There are no RNA chains in this entry.

## 5.4 Non-standard residues in protein, DNA, RNA chains ⓘ

10 non-standard protein/DNA/RNA residues are modelled in this entry.

In the following table, the Counts columns list the number of bonds (or angles) for which Mogul statistics could be retrieved, the number of bonds (or angles) that are observed in the model and the number of bonds (or angles) that are defined in the chemical component dictionary. The Link column lists molecule types, if any, to which the group is linked. The Z score for a bond length (or angle) is the number of standard deviations the observed value is removed from the expected value. A bond length (or angle) with  $|Z| > 2$  is considered an outlier worth inspection. RMSZ is the root-mean-square of all Z scores of the bond lengths (or angles).

Mol	Type	Chain	Res	Link	Bond lengths			Bond angles		
					Counts	RMSZ	# $ Z  > 2$	Counts	RMSZ	# $ Z  > 2$
1	MHS	A	257	1	11,11,12	8.04	6 (54%)	12,14,16	3.21	7 (58%)
1	AGM	A	271	1	11,11,12	6.86	4 (36%)	11,13,15	2.88	3 (27%)
1	MGN	A	400	1	9,9,10	7.86	4 (44%)	8,12,14	1.47	1 (12%)
1	GL3	A	445	1	1,3,4	0.05	0	0,2,4	0.00	-
1	SMC	A	452	1	6,6,7	8.12	3 (50%)	4,6,8	2.60	2 (50%)
1	MHS	D	257	1	11,11,12	6.69	5 (45%)	12,14,16	2.22	4 (33%)
1	AGM	D	271	1	11,11,12	6.26	4 (36%)	11,13,15	2.30	3 (27%)
1	MGN	D	400	1	9,9,10	9.61	1 (11%)	8,12,14	0.86	0
1	GL3	D	445	1	1,3,4	0.61	0	0,2,4	0.00	-
1	SMC	D	452	1	6,6,7	8.58	3 (50%)	4,6,8	3.38	3 (75%)

In the following table, the Chirals column lists the number of chiral outliers, the number of chiral centers analysed, the number of these observed in the model and the number defined in the chemical component dictionary. Similar counts are reported in the Torsion and Rings columns. '-' means no outliers of that kind were identified.

Mol	Type	Chain	Res	Link	Chirals	Torsions	Rings
1	MHS	A	257	1	-	0/4/6/8	0/1/1/1
1	AGM	A	271	1	-	0/9/11/13	0/0/0/0
1	MGN	A	400	1	-	0/6/9/12	0/0/0/0
1	GL3	A	445	1	-	0/0/1/2	0/0/0/0
1	SMC	A	452	1	-	0/3/5/7	0/0/0/0
1	MHS	D	257	1	-	0/4/6/8	0/1/1/1
1	AGM	D	271	1	-	0/9/11/13	0/0/0/0
1	MGN	D	400	1	-	0/6/9/12	0/0/0/0
1	GL3	D	445	1	-	0/0/1/2	0/0/0/0
1	SMC	D	452	1	-	0/3/5/7	0/0/0/0

The worst 5 of 30 bond length outliers are listed below:

Mol	Chain	Res	Type	Atoms	Z	Observed(Å)	Ideal(Å)
1	D	400	MGN	O-C	28.69	1.31	1.11
1	A	257	MHS	O-C	25.44	1.29	1.11
1	A	400	MGN	O-C	23.02	1.27	1.11
1	A	271	AGM	O-C	21.78	1.26	1.11
1	D	257	MHS	O-C	20.92	1.25	1.11

The worst 5 of 23 bond angle outliers are listed below:

Mol	Chain	Res	Type	Atoms	Z	Observed(°)	Ideal(°)
1	A	271	AGM	C-CA-N	-8.33	105.51	113.83
1	A	257	MHS	NE2-CE1-ND1	-6.52	99.69	112.02
1	D	271	AGM	C-CA-N	-5.99	107.84	113.83
1	D	452	SMC	CA-CB-SG	-4.55	108.03	113.86
1	A	257	MHS	C-CA-N	-4.49	109.34	113.83

There are no chirality outliers.

There are no torsion outliers.

There are no ring outliers.

## 5.5 Carbohydrates ⓘ

There are no carbohydrates in this entry.

## 5.6 Ligand geometry ⓘ

Of 25 ligands modelled in this entry, 10 are monoatomic - leaving 15 for Mogul analysis.

In the following table, the Counts columns list the number of bonds (or angles) for which Mogul statistics could be retrieved, the number of bonds (or angles) that are observed in the model and the number of bonds (or angles) that are defined in the chemical component dictionary. The Link column lists molecule types, if any, to which the group is linked. The Z score for a bond length (or angle) is the number of standard deviations the observed value is removed from the expected value. A bond length (or angle) with  $|Z| > 2$  is considered an outlier worth inspection. RMSZ is the root-mean-square of all Z scores of the bond lengths (or angles).

Mol	Type	Chain	Res	Link	Bond lengths			Bond angles		
					Counts	RMSZ	# $ Z  > 2$	Counts	RMSZ	# $ Z  > 2$
5	F43	A	1	1,7	71,71,71	3.25	21 (29%)	103,118,118	2.37	23 (22%)
6	TP7	A	553[A]	-	20,20,20	2.24	2 (10%)	26,26,26	2.17	5 (19%)
7	COM	A	554	5	6,6,6	1.52	1 (16%)	8,8,8	0.94	0
8	ACT	A	555[B]	-	1,3,3	1.04	0	0,3,3	0.00	-
8	ACT	A	556[B]	-	1,3,3	0.21	0	0,3,3	0.00	-
9	PEG	A	557	-	6,6,6	0.44	0	5,5,5	0.63	0
8	ACT	B	446[B]	-	1,3,3	0.07	0	0,3,3	0.00	-
8	ACT	C	1	-	1,3,3	1.02	0	0,3,3	0.00	-
9	PEG	C	251	-	6,6,6	0.47	0	5,5,5	0.64	0
5	F43	D	552	1,7	71,71,71	3.36	26 (36%)	103,118,118	2.63	29 (28%)
6	TP7	D	553[A]	-	20,20,20	2.16	1 (5%)	26,26,26	2.58	3 (11%)
7	COM	D	554	5	6,6,6	0.59	0	8,8,8	0.76	0
11	EDO	D	555	-	3,3,3	0.52	0	2,2,2	0.38	0
11	EDO	F	251	-	3,3,3	0.65	0	2,2,2	0.75	0
11	EDO	F	252	-	3,3,3	0.61	0	2,2,2	0.66	0

In the following table, the Chirals column lists the number of chiral outliers, the number of chiral centers analysed, the number of these observed in the model and the number defined in the chemical component dictionary. Similar counts are reported in the Torsion and Rings columns. '-' means no outliers of that kind were identified.

Mol	Type	Chain	Res	Link	Chirals	Torsions	Rings
5	F43	A	1	1,7	2/2/25/27	0/28/165/165	0/0/10/10
6	TP7	A	553[A]	-	1/1/5/6	0/23/24/24	0/0/0/0
7	COM	A	554	5	-	0/4/4/4	0/0/0/0
8	ACT	A	555[B]	-	-	0/0/0/0	0/0/0/0
8	ACT	A	556[B]	-	-	0/0/0/0	0/0/0/0
9	PEG	A	557	-	-	0/4/4/4	0/0/0/0
8	ACT	B	446[B]	-	-	0/0/0/0	0/0/0/0
8	ACT	C	1	-	-	0/0/0/0	0/0/0/0
9	PEG	C	251	-	-	0/4/4/4	0/0/0/0
5	F43	D	552	1,7	2/2/25/27	0/28/165/165	0/0/10/10
6	TP7	D	553[A]	-	1/1/5/6	0/23/24/24	0/0/0/0

*Continued on next page...*

*Continued from previous page...*

Mol	Type	Chain	Res	Link	Chirals	Torsions	Rings
7	COM	D	554	5	-	0/4/4/4	0/0/0/0
11	EDO	D	555	-	-	0/1/1/1	0/0/0/0
11	EDO	F	251	-	-	0/1/1/1	0/0/0/0
11	EDO	F	252	-	-	0/1/1/1	0/0/0/0

The worst 5 of 51 bond length outliers are listed below:

Mol	Chain	Res	Type	Atoms	Z	Observed(Å)	Ideal(Å)
5	D	552	F43	C4D-C3D	11.54	1.53	1.37
5	D	552	F43	C1D-C2D	10.51	1.56	1.39
5	A	1	F43	C4D-C3D	10.39	1.51	1.37
5	A	1	F43	C4B-NB	-9.43	1.29	1.47
5	D	552	F43	C4B-NB	-9.05	1.30	1.47

The worst 5 of 60 bond angle outliers are listed below:

Mol	Chain	Res	Type	Atoms	Z	Observed(°)	Ideal(°)
5	D	552	F43	CHA-C4D-C3D	-9.41	110.78	129.63
5	A	1	F43	C3B-C4B-NB	9.05	118.62	103.42
6	D	553[A]	TP7	O1-C1-N	8.41	127.41	112.94
5	A	1	F43	CHA-C4D-C3D	-8.16	113.29	129.63
5	A	1	F43	CHA-C4D-ND	-7.98	109.83	120.94

5 of 6 chirality outliers are listed below:

Mol	Chain	Res	Type	Atom
5	A	1	F43	C4B
5	A	1	F43	C4A
6	A	553[A]	TP7	C1
6	D	553[A]	TP7	C1
5	D	552	F43	C4B

There are no torsion outliers.

There are no ring outliers.

## 5.7 Other polymers ⓘ

There are no such residues in this entry.

## 5.8 Polymer linkage issues

There are no chain breaks in this entry.

## 6 Fit of model and data ⓘ

### 6.1 Protein, DNA and RNA chains ⓘ

In the following table, the column labelled ‘#RSRZ> 2’ contains the number (and percentage) of RSRZ outliers, followed by percent RSRZ outliers for the chain as percentile scores relative to all X-ray entries and entries of similar resolution. The OWAB column contains the minimum, median, 95<sup>th</sup> percentile and maximum values of the occupancy-weighted average B-factor per residue. The column labelled ‘Q< 0.9’ lists the number of (and percentage) of residues with an average occupancy less than 0.9.

Mol	Chain	Analysed	<RSRZ>	#RSRZ>2	OWAB(Å <sup>2</sup> )	Q<0.9
1	A	548/549 (99%)	-0.67	1 (0%) 93 95	5, 9, 19, 35	0
1	D	548/549 (99%)	-0.72	2 (0%) 90 94	6, 9, 19, 39	0
2	B	442/442 (100%)	-0.69	1 (0%) 93 95	6, 11, 20, 39	0
2	E	442/442 (100%)	-0.59	3 (0%) 84 90	7, 12, 23, 41	0
3	C	246/248 (99%)	-0.52	7 (2%) 50 55	7, 12, 28, 53	0
3	F	246/248 (99%)	-0.46	9 (3%) 39 43	7, 13, 32, 56	0
All	All	2472/2478 (99%)	-0.63	23 (0%) 79 87	5, 10, 21, 56	0

The worst 5 of 23 RSRZ outliers are listed below:

Mol	Chain	Res	Type	RSRZ
3	F	60	ASP	6.0
3	C	60	ASP	5.2
1	D	549	ALA	4.3
3	C	45	PRO	3.9
3	C	59	MET	3.7

### 6.2 Non-standard residues in protein, DNA, RNA chains ⓘ

In the following table, the Atoms column lists the number of modelled atoms in the group and the number defined in the chemical component dictionary. LLDF column lists the quality of electron density of the group with respect to its neighbouring residues in protein, DNA or RNA chains. The B-factors column lists the minimum, median, 95<sup>th</sup> percentile and maximum values of B factors of atoms in the group. The column labelled ‘Q< 0.9’ lists the number of atoms with occupancy less than 0.9.

Mol	Type	Chain	Res	Atoms	RSR	LLDF	B-factors(Å <sup>2</sup> )	Q<0.9
1	GL3	A	445	4/5	0.06	2.21	6,6,6,7	0
1	AGM	D	271	12/13	0.06	0.98	5,6,7,7	0

*Continued on next page...*

*Continued from previous page...*

Mol	Type	Chain	Res	Atoms	RSR	LLDF	B-factors( $\text{\AA}^2$ )	Q<0.9
1	MHS	D	257	11/12	0.06	0.88	10,13,19,21	0
1	SMC	D	452	7/8	0.05	0.58	6,7,8,10	0
1	AGM	A	271	12/13	0.05	-0.07	5,6,7,7	0
1	SMC	A	452	7/8	0.04	-0.18	6,7,9,10	0
1	MHS	A	257	11/12	0.06	-0.28	14,16,21,24	0
1	MGN	A	400	10/11	0.04	-0.42	5,7,8,8	0
1	GL3	D	445	4/5	0.04	-0.90	5,6,6,6	0
1	MGN	D	400	10/11	0.04	-1.48	5,6,7,8	0

## 6.3 Carbohydrates

There are no carbohydrates in this entry.

## 6.4 Ligands

In the following table, the Atoms column lists the number of modelled atoms in the group and the number defined in the chemical component dictionary. LLDF column lists the quality of electron density of the group with respect to its neighbouring residues in protein, DNA or RNA chains. The B-factors column lists the minimum, median, 95<sup>th</sup> percentile and maximum values of B factors of atoms in the group. The column labelled 'Q< 0.9' lists the number of atoms with occupancy less than 0.9.

Mol	Type	Chain	Res	Atoms	RSR	LLDF	B-factors( $\text{\AA}^2$ )	Q<0.9
9	PEG	A	557	7/7	0.19	33.25	28,31,35,37	0
4	MG	D	1	1/1	0.18	17.02	23,23,23,23	0
4	MG	E	444	1/1	0.18	14.55	17,17,17,17	0
4	MG	A	552[A]	1/1	0.19	13.80	13,13,13,13	1
4	MG	F	250	1/1	0.09	9.72	14,14,14,14	0
4	MG	C	250	1/1	0.09	7.30	16,16,16,16	0
4	MG	D	551	1/1	0.27	6.79	29,29,29,29	0
8	ACT	B	446[B]	4/4	0.08	6.70	13,14,14,16	4
4	MG	B	444	1/1	0.15	6.35	26,26,26,26	0
4	MG	B	445	1/1	0.28	4.33	25,25,25,25	1
6	TP7	A	553[A]	21/21	0.08	3.83	4,7,9,12	21
8	ACT	C	1	4/4	0.13	3.05	26,28,31,34	0
8	ACT	A	556[B]	4/4	0.11	2.49	15,15,17,17	4
4	MG	A	551[B]	1/1	0.17	2.09	18,18,18,18	1
11	EDO	F	252	4/4	0.14	1.67	30,30,36,39	0
6	TP7	D	553[A]	21/21	0.09	1.33	4,6,8,18	21
8	ACT	A	555[B]	4/4	0.09	0.77	14,15,17,18	4
9	PEG	C	251	7/7	0.12	0.40	36,38,44,45	0

*Continued on next page...*

*Continued from previous page...*

Mol	Type	Chain	Res	Atoms	RSR	LLDF	B-factors( $\text{\AA}^2$ )	Q<0.9
5	F43	D	552	62/62	0.05	0.31	4,6,8,12	0
11	EDO	F	251	4/4	0.16	0.16	31,32,33,37	0
11	EDO	D	555	4/4	0.08	0.10	40,43,43,45	0
5	F43	A	1	62/62	0.04	-0.42	4,6,8,12	0
7	COM	D	554	7/7	0.03	-1.14	7,7,8,9	0
10	ZN	A	558	1/1	0.03	-1.96	11,11,11,11	1
7	COM	A	554	7/7	0.03	-3.16	6,7,8,9	0

## 6.5 Other polymers ⓘ

There are no such residues in this entry.