



Full wwPDB X-ray Structure Validation Report ⓘ

Jun 17, 2014 – 09:24 PM EDT

PDB ID : 4M2F
Title : Crystal structure of non-heme iron oxygenase OrfP in complex with Fe and L-canavanine
Authors : Chang, C.Y.; Liu, Y.C.; Lyu, S.Y.; Wu, C.C.; Li, T.L.
Deposited on : 2013-08-05
Resolution : 1.92 Å(reported)

This is a full wwPDB validation report for a publicly released PDB entry.
We welcome your comments at validation@mail.wwpdb.org
A user guide is available at <http://wwpdb.org/ValidationPDFNotes.html>

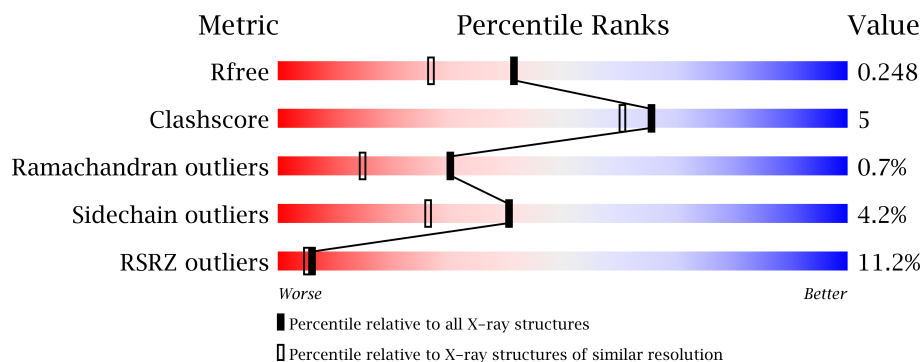
The following versions of software and data (see [references](#)) were used in the production of this report:

MolProbity : 4.02b-467
Mogul : **FAILED**
Xtriage (Phenix) : dev-1439
EDS : stable23161
Percentile statistics : 21963
Refmac : 5.8.0049
CCP4 : 6.3.0 (Settle)
Ideal geometry (proteins) : Engh & Huber (2001)
Ideal geometry (DNA, RNA) : Parkinson et. al. (1996)
Validation Pipeline (wwPDB-VP) : stable23161

1 Overall quality at a glance

The reported resolution of this entry is 1.92 Å.

Percentile scores (ranging between 0-100) for global validation metrics of the entry are shown in the following graphic. The table shows the number of entries on which the scores are based.



Metric	Whole archive (#Entries)	Similar resolution (#Entries, resolution range(Å))
R_{free}	66092	4387 (1.94-1.90)
Clashscore	79885	5258 (1.94-1.90)
Ramachandran outliers	78287	5193 (1.94-1.90)
Sidechain outliers	78261	5194 (1.94-1.90)
RSRZ outliers	66119	4389 (1.94-1.90)

The table below summarises the geometric issues observed across the polymeric chains and their fit to the electron density. The red, orange, yellow and green segments on the lower bar indicate the fraction of residues that contain outliers for ≥ 3 , 2, 1 and 0 types of geometric quality criteria. The upper red bar (where present) indicates the fraction of residues that have poor fit to the electron density.

Mol	Chain	Length	Quality of chain
1	A	364	
1	B	364	
1	C	364	
1	D	364	

2 Entry composition

There are 4 unique types of molecules in this entry. The entry contains 11548 atoms, of which 0 are hydrogen and 0 are deuterium.

In the tables below, the ZeroOcc column contains the number of atoms modelled with zero occupancy, the AltConf column contains the number of residues with at least one atom in alternate conformation and the Trace column contains the number of residues modelled with at most 2 atoms.

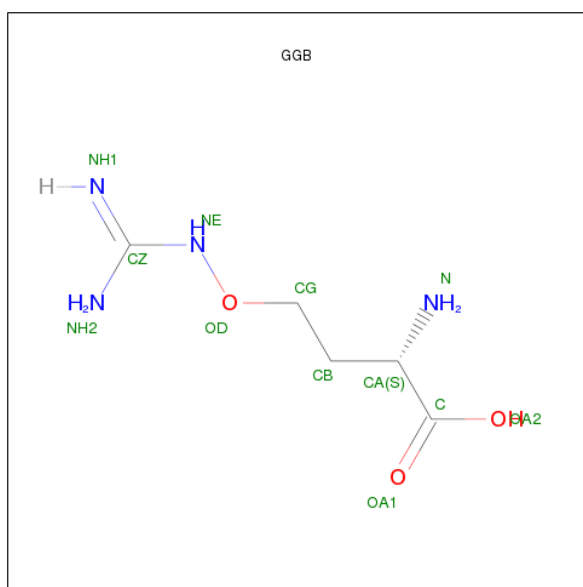
- Molecule 1 is a protein called L-arginine beta-hydroxylase.

Mol	Chain	Residues	Atoms					ZeroOcc	AltConf	Trace
1	A	336	Total	C	N	O	S	0	0	0
			2690	1693	487	503	7			
1	B	313	Total	C	N	O	S	0	0	0
			2517	1591	457	463	6			
1	C	336	Total	C	N	O	S	0	0	0
			2690	1693	487	503	7			
1	D	336	Total	C	N	O	S	0	0	0
			2690	1693	487	503	7			

- Molecule 2 is FE (III) ION (three-letter code: FE) (formula: Fe).

Mol	Chain	Residues	Atoms		ZeroOcc	AltConf
2	B	1	Total	Fe	0	0
			1	1		
2	A	1	Total	Fe	0	0
			1	1		
2	D	1	Total	Fe	0	0
			1	1		
2	C	1	Total	Fe	0	0
			1	1		

- Molecule 3 is L-CANAVANINE (three-letter code: GGB) (formula: C₅H₁₂N₄O₃).



Mol	Chain	Residues	Atoms				ZeroOcc	AltConf
3	C	1	Total 12	C 5	N 4	O 3	0	0
3	D	1	Total 12	C 5	N 4	O 3	0	0

- Molecule 4 is water.

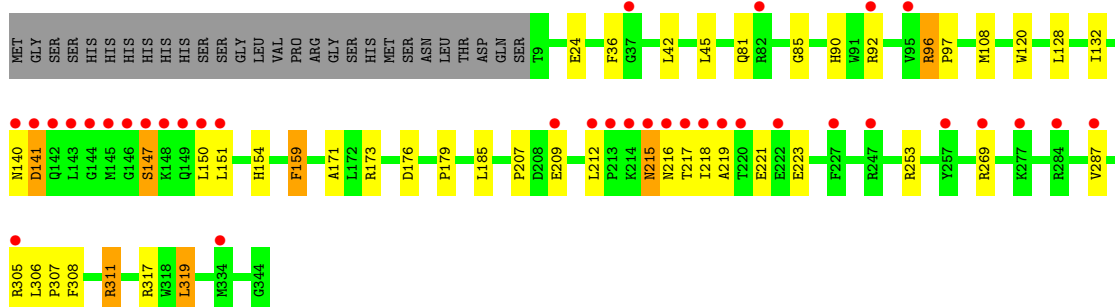
Mol	Chain	Residues	Atoms	ZeroOcc	AltConf
4	A	275	Total O 275 275	0	0
4	B	249	Total O 249 249	0	0
4	C	222	Total O 222 222	0	0
4	D	187	Total O 187 187	0	0

3 Residue-property plots

These plots are drawn for all protein, RNA and DNA chains in the entry. The first graphic for a chain summarises the proportions of errors displayed in the second graphic. The second graphic shows the sequence view annotated by issues in geometry and electron density. Residues are color-coded according to the number of geometric quality criteria for which they contain at least one outlier: green = 0, yellow = 1, orange = 2 and red = 3 or more. A red dot above a residue indicates a poor fit to the electron density ($RSRZ > 2$). Stretches of 2 or more consecutive residues without any outlier are shown as a green connector. Residues present in the sample, but not in the model, are shown in grey.

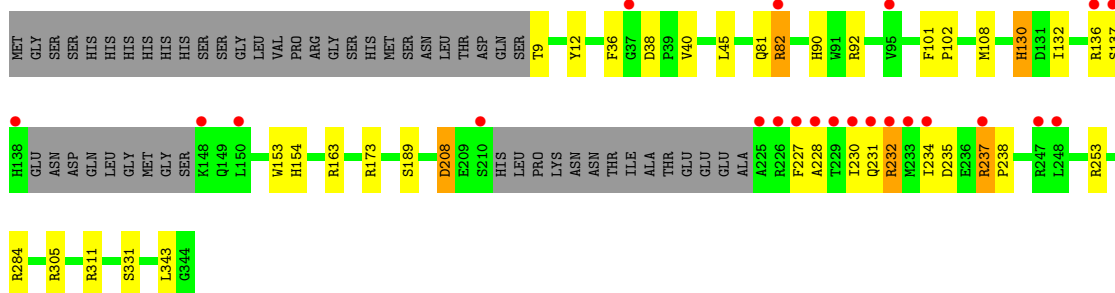
- Molecule 1: L-arginine beta-hydroxylase

Chain A: 



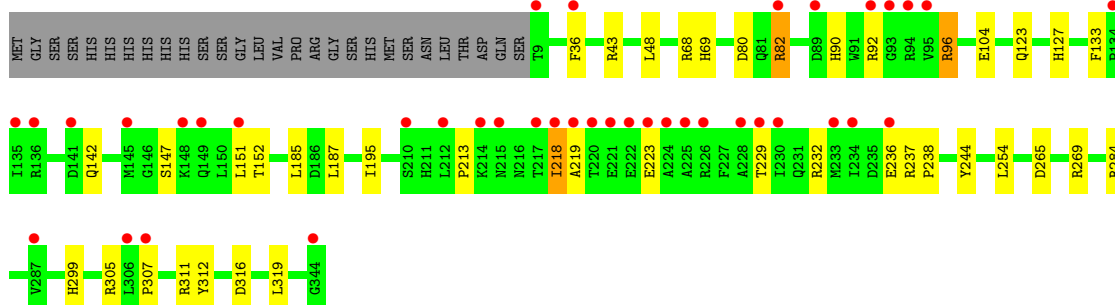
- Molecule 1: L-arginine beta-hydroxylase

Chain B: 



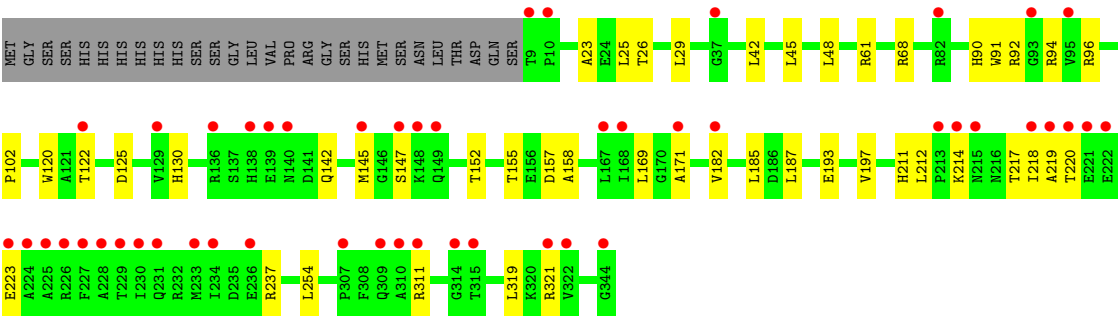
- Molecule 1: L-arginine beta-hydroxylase

Chain C: 



● Molecule 1: L-arginine beta-hydroxylase

Chain D: 



4 Data and refinement statistics

Property	Value	Source
Space group	P 1 21 1	Depositor
Cell constants a, b, c, α , β , γ	67.99Å 116.61Å 96.18Å 90.00° 92.19° 90.00°	Depositor
Resolution (Å)	30.00 – 1.92 29.15 – 1.92	Depositor EDS
% Data completeness (in resolution range)	99.6 (30.00-1.92) 99.6 (29.15-1.92)	Depositor EDS
R_{merge}	(Not available)	Depositor
R_{sym}	(Not available)	Depositor
$\langle I/\sigma(I) \rangle$ ¹	1.94 (at 1.92Å)	Xtriage
Refinement program	REFMAC 5.6.0117	Depositor
R, R_{free}	0.208 , 0.248 0.209 , 0.248	Depositor DCC
R_{free} test set	5687 reflections (5.27%)	DCC
Wilson B-factor (Å ²)	28.0	Xtriage
Anisotropy	0.039	Xtriage
Bulk solvent k_{sol} (e/Å ³), B_{sol} (Å ²)	0.31 , 32.6	EDS
Estimated twinning fraction	0.023 for h,-k,-l	Xtriage
L-test for twinning	$\langle L \rangle = 0.50$, $\langle L^2 \rangle = 0.33$	Xtriage
Outliers	0 of 113671 reflections	Xtriage
F_o, F_c correlation	0.95	EDS
Total number of atoms	11548	wwPDB-VP
Average B, all atoms (Å ²)	34.0	wwPDB-VP

Xtriage's analysis on translational NCS is as follows: *The largest off-origin peak in the Patterson function is 3.59% of the height of the origin peak. No significant pseudotranslation is detected.*

¹Intensities estimated from amplitudes.

5 Model quality ⓘ

5.1 Standard geometry ⓘ

Bond lengths and bond angles in the following residue types are not validated in this section: FE, GGB

The Z score for a bond length (or angle) is the number of standard deviations the observed value is removed from the expected value. A bond length (or angle) with $|Z| > 5$ is considered an outlier worth inspection. RMSZ is the root-mean-square of all Z scores of the bond lengths (or angles).

Mol	Chain	Bond lengths		Bond angles	
		RMSZ	$\# Z > 5$	RMSZ	$\# Z > 5$
1	A	0.50	1/2760 (0.0%)	0.64	1/3754 (0.0%)
1	B	0.50	1/2583 (0.0%)	0.61	0/3511
1	C	0.50	0/2760	0.61	1/3754 (0.0%)
1	D	0.49	1/2760 (0.0%)	0.61	0/3754
All	All	0.49	3/10863 (0.0%)	0.62	2/14773 (0.0%)

All (3) bond length outliers are listed below:

Mol	Chain	Res	Type	Atoms	Z	Observed(Å)	Ideal(Å)
1	B	153	TRP	CD2-CE2	5.24	1.47	1.41
1	A	120	TRP	CD2-CE2	5.13	1.47	1.41
1	D	120	TRP	CD2-CE2	5.07	1.47	1.41

All (2) bond angle outliers are listed below:

Mol	Chain	Res	Type	Atoms	Z	Observed(°)	Ideal(°)
1	C	319	LEU	CA-CB-CG	5.74	128.49	115.30
1	A	319	LEU	CA-CB-CG	5.14	127.12	115.30

There are no chirality outliers.

There are no planarity outliers.

5.2 Close contacts ⓘ

In the following table, the Non-H and H(model) columns list the number of non-hydrogen atoms and hydrogen atoms in the chain respectively. The H(added) column lists the number of hydrogens added by MolProbity. The Clashes column lists the number of clashes within the asymmetric unit, and the number in parentheses is this value normalized per 1000 atoms of the molecule in the chain. The Symm-Clashes column gives symmetry related clashes, in the same way as for the Clashes column.

Mol	Chain	Non-H	H(model)	H(added)	Clashes	Symm-Clashes
1	A	2690	0	2606	31	0
1	B	2517	0	2446	26	0
1	C	2690	0	2606	31	0
1	D	2690	0	2606	23	1
2	A	1	0	0	0	0
2	B	1	0	0	0	0
2	C	1	0	0	0	0
2	D	1	0	0	0	0
3	C	12	0	10	2	0
3	D	12	0	10	0	0
4	A	275	0	0	5	1
4	B	249	0	0	4	0
4	C	222	0	0	6	0
4	D	187	0	0	1	0
All	All	11548	0	10284	109	1

Clashscore is defined as the number of clashes calculated for the entry per 1000 atoms (including hydrogens) of the entry. The overall clashscore for this entry is 5.

All (109) close contacts within the same asymmetric unit are listed below.

Atom-1	Atom-2	Distance(Å)	Clash(Å)
1:C:82:ARG:HD2	1:C:82:ARG:O	1.46	1.14
1:B:237:ARG:HB3	1:B:238:PRO:HD3	1.31	1.10
1:B:82:ARG:HH11	1:B:82:ARG:CG	1.71	1.04
1:A:305:ARG:HH21	1:A:317:ARG:HH12	1.08	0.98
1:C:82:ARG:HD2	1:C:82:ARG:C	1.76	0.97
1:B:227:PHE:HB3	1:B:228:ALA:HA	1.48	0.94
1:B:82:ARG:HH11	1:B:82:ARG:HG2	1.30	0.92
1:C:236:GLU:CG	4:C:722:HOH:O	2.22	0.88
1:B:331:SER:HB2	1:B:343:LEU:HD11	1.57	0.87
1:D:142:GLN:HE22	1:D:152:THR:H	1.25	0.84
1:B:90:HIS:HD2	1:B:92:ARG:H	1.24	0.84
1:C:82:ARG:C	1:C:82:ARG:CD	2.44	0.82
1:C:236:GLU:HG3	4:C:722:HOH:O	1.81	0.81
1:A:24:GLU:OE1	4:A:739:HOH:O	2.01	0.79
1:C:236:GLU:HG2	4:C:722:HOH:O	1.83	0.79
1:C:82:ARG:O	1:C:82:ARG:CD	2.32	0.76
1:B:253:ARG:NH1	4:B:741:HOH:O	2.19	0.75
1:D:90:HIS:HD2	1:D:92:ARG:H	1.35	0.75
1:B:237:ARG:HB3	1:B:238:PRO:CD	2.14	0.74
1:C:90:HIS:HD2	1:C:92:ARG:H	1.36	0.71
1:B:82:ARG:NH1	1:B:82:ARG:HG2	2.01	0.68
1:C:213:PRO:HB3	1:C:219:ALA:HB2	1.74	0.68

Continued on next page...

Continued from previous page...

Atom-1	Atom-2	Distance(Å)	Clash(Å)
1:D:157:ASP:OD1	1:D:211:HIS:HE1	1.76	0.68
1:A:179:PRO:HB3	1:A:287:VAL:HG22	1.77	0.67
1:C:236:GLU:HG3	1:C:238:PRO:HD3	1.77	0.67
1:C:142:GLN:HE22	1:C:152:THR:H	1.40	0.67
1:D:26:THR:HG21	4:D:612:HOH:O	1.96	0.65
1:B:82:ARG:HH11	1:B:82:ARG:HG3	1.58	0.65
1:A:305:ARG:HH21	1:A:317:ARG:NH1	1.88	0.63
1:A:151:LEU:HB3	1:A:305:ARG:HB2	1.81	0.62
1:D:26:THR:OG1	1:D:102:PRO:O	2.17	0.62
1:B:90:HIS:CD2	1:B:92:ARG:H	2.12	0.61
1:D:23:ALA:O	1:D:26:THR:HG22	2.00	0.60
1:A:176:ASP:OD2	1:A:311:ARG:NH2	2.35	0.60
1:A:92:ARG:NH2	4:A:754:HOH:O	2.35	0.60
1:A:140:ASN:O	1:A:141:ASP:HB2	2.01	0.59
1:D:171:ALA:HA	1:D:319:LEU:HD22	1.84	0.58
1:D:26:THR:HG23	1:D:102:PRO:HB3	1.86	0.58
1:B:227:PHE:CB	1:B:228:ALA:HA	2.26	0.57
1:C:69:HIS:HD2	4:C:668:HOH:O	1.87	0.57
1:A:90:HIS:CD2	1:A:92:ARG:HG3	2.40	0.56
1:B:232:ARG:HG3	1:B:235:ASP:OD1	2.05	0.56
1:A:90:HIS:CD2	1:A:92:ARG:H	2.24	0.56
1:A:96:ARG:NH2	4:A:539:HOH:O	2.39	0.55
1:C:127:HIS:CD2	4:C:637:HOH:O	2.60	0.55
1:D:169:LEU:CD2	1:D:321:ARG:HG3	2.36	0.55
1:C:90:HIS:CD2	1:C:92:ARG:HB2	2.40	0.55
1:C:90:HIS:CD2	1:C:92:ARG:H	2.22	0.55
1:A:209:GLU:HA	1:A:212:LEU:HD13	1.88	0.55
1:A:217:THR:HG22	1:A:219:ALA:H	1.73	0.54
1:B:132:ILE:HD13	1:B:305:ARG:HH12	1.73	0.53
1:D:169:LEU:HD23	1:D:321:ARG:HG3	1.90	0.53
1:B:36:PHE:CE1	1:B:108:MET:HG3	2.45	0.51
1:A:36:PHE:CE1	1:A:108:MET:HG3	2.46	0.51
1:A:218:ILE:O	1:A:218:ILE:HG22	2.11	0.51
1:D:130:HIS:HD2	1:D:321:ARG:NH1	2.08	0.51
1:A:90:HIS:HD2	1:A:92:ARG:H	1.59	0.51
1:C:151:LEU:HB3	1:C:305:ARG:H	1.75	0.50
1:A:81:GLN:NE2	1:A:173:ARG:HE	2.09	0.50
1:D:193:GLU:O	1:D:197:VAL:HG23	2.12	0.50
1:B:38:ASP:OD1	1:B:40:VAL:HG12	2.12	0.50
1:A:219:ALA:O	1:A:223:GLU:HG2	2.12	0.49
1:B:82:ARG:NH1	1:B:82:ARG:CG	2.44	0.49
1:A:212:LEU:O	1:A:215:ASN:HB2	2.12	0.49

Continued on next page...

Continued from previous page...

Atom-1	Atom-2	Distance(Å)	Clash(Å)
1:B:208:ASP:HB2	4:B:733:HOH:O	2.13	0.49
1:B:331:SER:CB	1:B:343:LEU:HD11	2.38	0.49
1:D:212:LEU:HD13	1:D:214:LYS:HE2	1.94	0.48
1:C:36:PHE:HZ	1:C:96:ARG:NH1	2.11	0.48
1:D:219:ALA:HB1	1:D:223:GLU:HB3	1.95	0.47
1:A:140:ASN:O	1:A:141:ASP:CB	2.63	0.47
1:B:237:ARG:CB	1:B:238:PRO:HD3	2.23	0.47
1:B:130:HIS:HE1	4:B:678:HOH:O	1.97	0.47
1:A:147:SER:HB2	1:A:308:PHE:O	2.14	0.46
1:A:269:ARG:HD3	4:A:771:HOH:O	2.15	0.46
1:C:244:TYR:OH	1:C:299:HIS:ND1	2.45	0.45
1:D:130:HIS:CD2	1:D:321:ARG:NH1	2.84	0.45
1:C:142:GLN:NE2	1:C:152:THR:H	2.11	0.45
1:B:81:GLN:NE2	1:B:173:ARG:HE	2.16	0.44
1:C:229:THR:HA	4:C:710:HOH:O	2.16	0.44
1:A:132:ILE:HG21	1:A:305:ARG:NH2	2.32	0.44
1:C:36:PHE:CZ	1:C:96:ARG:NH1	2.86	0.44
1:A:132:ILE:HG21	1:A:305:ARG:HH22	1.81	0.44
1:C:187:LEU:HD22	1:C:195:ILE:HD11	2.00	0.44
1:C:147:SER:O	1:C:307:PRO:HA	2.17	0.44
1:A:85:GLY:HA2	4:A:635:HOH:O	2.18	0.44
1:A:81:GLN:HE22	1:A:173:ARG:HE	1.65	0.43
1:A:150:LEU:HA	1:A:307:PRO:HD3	2.00	0.43
1:A:179:PRO:HD2	1:A:306:LEU:HD12	2.00	0.43
1:C:265:ASP:O	1:C:269:ARG:HG3	2.19	0.43
1:C:43:ARG:O	1:D:61:ARG:HG2	2.19	0.43
1:C:123:GLN:NE2	3:C:402:GGB:HN2	2.16	0.43
1:D:155:THR:HB	1:D:158:ALA:HB2	2.01	0.42
1:D:122:THR:OG1	1:D:211:HIS:HD2	2.03	0.42
1:D:91:TRP:HD1	1:D:145:MET:HE2	1.84	0.42
1:C:232:ARG:O	1:C:236:GLU:HG2	2.19	0.42
1:D:125:ASP:OD2	1:D:217:THR:HG23	2.20	0.42
1:C:96:ARG:NH1	1:C:104:GLU:OE1	2.50	0.42
1:B:163:ARG:NH1	1:B:253:ARG:HH21	2.18	0.42
1:D:25:LEU:O	1:D:29:LEU:HG	2.20	0.41
1:C:312:TYR:N	1:C:316:ASP:OD2	2.53	0.41
1:D:90:HIS:CD2	1:D:92:ARG:H	2.25	0.41
1:D:218:ILE:HG13	1:D:218:ILE:H	1.77	0.41
1:B:12:TYR:OH	1:C:237:ARG:NH1	2.53	0.41
1:A:90:HIS:NE2	1:A:92:ARG:HG3	2.36	0.40
1:C:123:GLN:HE22	3:C:402:GGB:HN2	1.68	0.40
1:B:101:PHE:HB3	1:B:102:PRO:HD3	2.03	0.40

Continued on next page...

Continued from previous page...

Atom-1	Atom-2	Distance(Å)	Clash(Å)
1:A:159:PHE:CZ	1:A:207:PRO:HB3	2.56	0.40
1:B:9:THR:N	4:B:688:HOH:O	2.53	0.40
1:A:171:ALA:HA	1:A:319:LEU:HD22	2.02	0.40

All (1) symmetry-related close contacts are listed below. The label for Atom-2 includes the symmetry operator and encoded unit-cell translations to be applied.

Atom-1	Atom-2	Distance(Å)	Clash(Å)
1:D:237:ARG:NH2	4:A:735:HOH:O[1_655]	2.00	0.20

5.3 Torsion angles

5.3.1 Protein backbone ⓘ

In the following table, the Percentiles column shows the percent Ramachandran outliers of the chain as a percentile score with respect to all X-ray entries followed by that with respect to entries of similar resolution. The Analysed column shows the number of residues for which the backbone conformation was analysed, and the total number of residues.

Mol	Chain	Analysed	Favoured	Allowed	Outliers	Percentiles	
1	A	334/364 (92%)	326 (98%)	6 (2%)	2 (1%)	33	18
1	B	307/364 (84%)	293 (95%)	11 (4%)	3 (1%)	22	8
1	C	334/364 (92%)	320 (96%)	12 (4%)	2 (1%)	33	18
1	D	334/364 (92%)	327 (98%)	5 (2%)	2 (1%)	33	18
All	All	1309/1456 (90%)	1266 (97%)	34 (3%)	9 (1%)	30	15

All (9) Ramachandran outliers are listed below:

Mol	Chain	Res	Type
1	A	141	ASP
1	B	237	ARG
1	A	147	SER
1	C	218	ILE
1	D	94	ARG
1	B	231	GLN
1	C	80	ASP
1	B	137	SER
1	D	147	SER

5.3.2 Protein sidechains ⓘ

In the following table, the Percentiles column shows the percent sidechain outliers of the chain as a percentile score with respect to all X-ray entries followed by that with respect to entries of similar resolution. The Analysed column shows the number of residues for which the sidechain conformation was analysed, and the total number of residues.

Mol	Chain	Analysed	Rotameric	Outliers	Percentiles	
1	A	286/311 (92%)	273 (96%)	13 (4%)	38	23
1	B	267/311 (86%)	255 (96%)	12 (4%)	38	23
1	C	286/311 (92%)	275 (96%)	11 (4%)	44	30
1	D	286/311 (92%)	275 (96%)	11 (4%)	44	30
All	All	1125/1244 (90%)	1078 (96%)	47 (4%)	40	26

All (47) residues with a non-rotameric sidechain are listed below:

Mol	Chain	Res	Type
1	A	42	LEU
1	A	45	LEU
1	A	96	ARG
1	A	97	PRO
1	A	128	LEU
1	A	154	HIS
1	A	159	PHE
1	A	185	LEU
1	A	215	ASN
1	A	216	ASN
1	A	221	GLU
1	A	253	ARG
1	A	311	ARG
1	B	45	LEU
1	B	82	ARG
1	B	130	HIS
1	B	136	ARG
1	B	154	HIS
1	B	189	SER
1	B	208	ASP
1	B	230	ILE
1	B	232	ARG
1	B	234	ILE
1	B	284	ARG
1	B	311	ARG
1	C	48	LEU

Continued on next page...

Continued from previous page...

Mol	Chain	Res	Type
1	C	68	ARG
1	C	82	ARG
1	C	96	ARG
1	C	133	PHE
1	C	185	LEU
1	C	218	ILE
1	C	223	GLU
1	C	254	LEU
1	C	284	ARG
1	C	311	ARG
1	D	42	LEU
1	D	45	LEU
1	D	48	LEU
1	D	68	ARG
1	D	96	ARG
1	D	182	VAL
1	D	185	LEU
1	D	187	LEU
1	D	220	THR
1	D	254	LEU
1	D	311	ARG

Some sidechains can be flipped to improve hydrogen bonding and reduce clashes. All (26) such sidechains are listed below:

Mol	Chain	Res	Type
1	A	57	GLN
1	A	69	HIS
1	A	81	GLN
1	A	90	HIS
1	A	177	HIS
1	A	216	ASN
1	B	57	GLN
1	B	81	GLN
1	B	90	HIS
1	B	130	HIS
1	B	177	HIS
1	C	57	GLN
1	C	69	HIS
1	C	81	GLN
1	C	90	HIS
1	C	123	GLN
1	C	142	GLN

Continued on next page...

Continued from previous page...

Mol	Chain	Res	Type
1	C	177	HIS
1	D	57	GLN
1	D	81	GLN
1	D	90	HIS
1	D	130	HIS
1	D	142	GLN
1	D	177	HIS
1	D	211	HIS
1	D	263	GLN

5.3.3 RNA ⓘ

There are no RNA chains in this entry.

5.4 Non-standard residues in protein, DNA, RNA chains ⓘ

Mogul failed to run properly - this section will therefore be empty.

5.5 Carbohydrates ⓘ

Mogul failed to run properly - this section will therefore be empty.

5.6 Ligand geometry ⓘ

Mogul failed to run properly - this section will therefore be empty.

5.7 Other polymers ⓘ

Mogul failed to run properly - this section will therefore be empty.

5.8 Polymer linkage issues

There are no chain breaks in this entry.

6 Fit of model and data ⓘ

6.1 Protein, DNA and RNA chains ⓘ

In the following table, the column labelled ‘#RSRZ> 2’ contains the number (and percentage) of RSRZ outliers, followed by percent RSRZ outliers for the chain as percentile scores relative to all X-ray entries and entries of similar resolution. The OWAB column contains the minimum, median, 95th percentile and maximum values of the occupancy-weighted average B-factor per residue. The column labelled ‘Q< 0.9’ lists the number of (and percentage) of residues with an average occupancy less than 0.9.

Mol	Chain	Analysed	<RSRZ>	#RSRZ>2	OWAB(Å ²)	Q<0.9
1	A	336/364 (92%)	0.62	36 (10%) 6 5	15, 26, 78, 113	6 (1%)
1	B	313/364 (85%)	0.50	22 (7%) 16 16	19, 29, 77, 132	3 (0%)
1	C	336/364 (92%)	0.66	40 (11%) 5 4	17, 29, 61, 116	4 (1%)
1	D	336/364 (92%)	0.86	49 (14%) 3 3	19, 37, 62, 100	3 (0%)
All	All	1321/1456 (90%)	0.66	147 (11%) 6 5	15, 30, 65, 132	16 (1%)

All (147) RSRZ outliers are listed below:

Mol	Chain	Res	Type	RSRZ
1	A	217	THR	11.8
1	A	143	LEU	11.1
1	A	216	ASN	10.6
1	C	219	ALA	10.0
1	B	228	ALA	9.5
1	C	220	THR	9.3
1	A	150	LEU	9.2
1	A	141	ASP	9.1
1	B	138	HIS	8.7
1	A	215	ASN	8.6
1	B	227	PHE	8.3
1	B	225	ALA	8.2
1	A	149	GLN	7.6
1	C	222	GLU	7.2
1	D	221	GLU	7.2
1	D	230	ILE	7.1
1	D	224	ALA	7.1
1	A	218	ILE	6.9
1	D	225	ALA	6.8
1	C	230	ILE	6.7
1	A	214	LYS	6.7

Continued on next page...

Continued from previous page...

Mol	Chain	Res	Type	RSRZ
1	D	220	THR	6.4
1	B	230	ILE	6.2
1	A	151	LEU	6.1
1	B	237	ARG	6.0
1	A	145	MET	6.0
1	A	213	PRO	5.9
1	C	218	ILE	5.6
1	D	219	ALA	5.5
1	D	9	THR	5.5
1	A	219	ALA	5.4
1	B	234	ILE	5.3
1	A	142	GLN	5.3
1	A	92	ARG	5.2
1	D	227	PHE	5.2
1	B	232	ARG	5.2
1	C	225	ALA	5.2
1	A	140	ASN	5.2
1	B	226	ARG	5.1
1	A	144	GLY	5.1
1	C	92	ARG	5.0
1	B	231	GLN	4.9
1	D	226	ARG	4.7
1	C	221	GLU	4.7
1	A	146	GLY	4.6
1	B	229	THR	4.6
1	D	228	ALA	4.5
1	A	220	THR	4.4
1	C	223	GLU	4.3
1	C	233	MET	4.1
1	D	218	ILE	4.1
1	C	224	ALA	4.1
1	D	309	GLN	4.0
1	A	147	SER	4.0
1	A	212	LEU	3.9
1	D	148	LYS	3.9
1	A	148	LYS	3.9
1	C	210	SER	3.8
1	D	223	GLU	3.7
1	D	344	GLY	3.7
1	C	236	GLU	3.7
1	B	37	GLY	3.6
1	D	82	ARG	3.6

Continued on next page...

Continued from previous page...

Mol	Chain	Res	Type	RSRZ
1	B	137	SER	3.6
1	B	150	LEU	3.5
1	D	222	GLU	3.5
1	A	334	MET	3.5
1	B	82	ARG	3.4
1	C	344	GLY	3.3
1	A	257	TYR	3.2
1	D	139	GLU	3.2
1	A	82	ARG	3.2
1	D	140	ASN	3.2
1	C	148	LYS	3.2
1	D	234	ILE	3.2
1	D	231	GLN	3.1
1	C	306	LEU	3.1
1	A	305	ARG	3.0
1	D	213	PRO	3.0
1	A	284	ARG	3.0
1	C	287	VAL	3.0
1	B	136	ARG	2.9
1	C	95	VAL	2.9
1	C	226	ARG	2.9
1	D	168	ILE	2.8
1	C	151	LEU	2.8
1	C	9	THR	2.8
1	D	307	PRO	2.8
1	C	94	ARG	2.8
1	D	233	MET	2.7
1	C	228	ALA	2.7
1	D	147	SER	2.7
1	A	227	PHE	2.7
1	B	148	LYS	2.7
1	A	269	ARG	2.7
1	D	315	THR	2.7
1	C	214	LYS	2.7
1	C	215	ASN	2.7
1	D	122	THR	2.7
1	D	10	PRO	2.6
1	C	136	ARG	2.6
1	D	214	LYS	2.6
1	C	307	PRO	2.6
1	C	82	ARG	2.5
1	D	149	GLN	2.5

Continued on next page...

Continued from previous page...

Mol	Chain	Res	Type	RSRZ
1	C	134	PRO	2.5
1	A	95	VAL	2.5
1	D	95	VAL	2.5
1	D	321	ARG	2.5
1	A	287	VAL	2.5
1	B	210	SER	2.5
1	C	149	GLN	2.4
1	A	247	ARG	2.4
1	C	229	THR	2.4
1	D	310	ALA	2.4
1	B	95	VAL	2.3
1	D	215	ASN	2.3
1	A	222	GLU	2.3
1	C	145	MET	2.3
1	D	93	GLY	2.3
1	D	129	VAL	2.2
1	C	217	THR	2.2
1	D	167	LEU	2.2
1	A	277	LYS	2.2
1	C	135	ILE	2.2
1	D	37	GLY	2.2
1	D	145	MET	2.2
1	B	247	ARG	2.2
1	D	322	VAL	2.2
1	C	36	PHE	2.2
1	A	37	GLY	2.2
1	C	89	ASP	2.1
1	C	212	LEU	2.1
1	D	229	THR	2.1
1	D	182	VAL	2.1
1	D	311	ARG	2.1
1	D	138	HIS	2.1
1	D	171	ALA	2.1
1	B	233	MET	2.1
1	C	234	ILE	2.0
1	C	93	GLY	2.0
1	D	314	GLY	2.0
1	A	209	GLU	2.0
1	D	236	GLU	2.0
1	B	248	LEU	2.0
1	C	141	ASP	2.0
1	D	136	ARG	2.0

6.2 Non-standard residues in protein, DNA, RNA chains ⓘ

There are no non-standard protein/DNA/RNA residues in this entry.

6.3 Carbohydrates ⓘ

There are no carbohydrates in this entry.

6.4 Ligands ⓘ

In the following table, the Atoms column lists the number of modelled atoms in the group and the number defined in the chemical component dictionary. LLDF column lists the quality of electron density of the group with respect to its neighbouring residues in protein, DNA or RNA chains. The B-factors column lists the minimum, median, 95th percentile and maximum values of B factors of atoms in the group. The column labelled 'Q< 0.9' lists the number of atoms with occupancy less than 0.9.

Mol	Type	Chain	Res	Atoms	RSR	LLDF	B-factors(Å ²)	Q<0.9
3	GGB	D	402	12/12	0.15	-0.02	31,39,43,44	0
3	GGB	C	402	12/12	0.15	-0.29	37,41,43,44	0
2	FE	D	401	1/1	0.06	-2.01	51,51,51,51	0
2	FE	A	401	1/1	0.03	-2.31	42,42,42,42	0
2	FE	C	401	1/1	0.05	-2.49	49,49,49,49	0
2	FE	B	401	1/1	0.02	-4.46	33,33,33,33	0

6.5 Other polymers ⓘ

There are no such residues in this entry.