



Full wwPDB X-ray Structure Validation Report

Sep 9, 2014 – 04:45 PM EDT

PDB ID : 4M3V
Title : X-ray crystal structure of the ruthenium complex [Ru(Tap)₂(dppz-{Me₂})]₂
+bound to d(TCGGTACCGA)
Authors : Niyazi, H.; Teixeira, S.; Mitchell, E.; Forsyth, T.; Cardin, C.
Deposited on : 2013-08-06
Resolution : 2.05 Å(reported)

This is a full wwPDB validation report for a publicly released PDB entry.
We welcome your comments at validation@mail.wwpdb.org
A user guide is available at <http://wwpdb.org/ValidationPDFNotes.html>

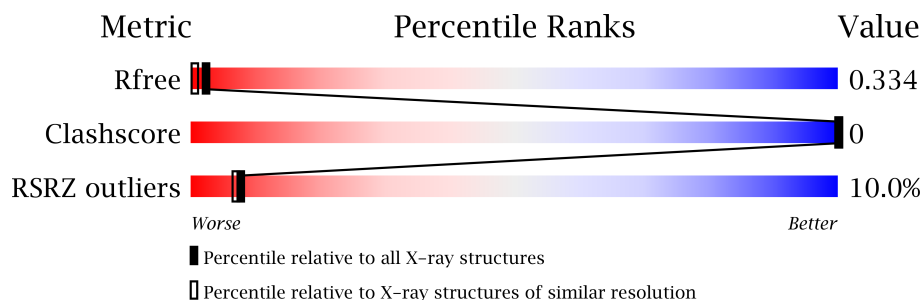
The following versions of software and data (see [references](#)) were used in the production of this report:

MolProbity : 4.02b-467
Mogul : 1.16 November 2013
Xtriage (Phenix) : dev-1439
EDS : stable23489
Percentile statistics : 21963
Refmac : 5.8.0049
CCP4 : 6.3.0 (Settle)
Ideal geometry (proteins) : Engh & Huber (2001)
Ideal geometry (DNA, RNA) : Parkinson et. al. (1996)
Validation Pipeline (wwPDB-VP) : stable23489

1 Overall quality at a glance

The reported resolution of this entry is 2.05 Å.

Percentile scores (ranging between 0-100) for global validation metrics of the entry are shown in the following graphic. The table shows the number of entries on which the scores are based.



Metric	Whole archive (#Entries)	Similar resolution (#Entries, resolution range(Å))
R_{free}	66092	1380 (2.06-2.02)
Clashscore	79885	1577 (2.06-2.02)
RSRZ outliers	66119	1381 (2.06-2.02)

The table below summarises the geometric issues observed across the polymeric chains and their fit to the electron density. The red, orange, yellow and green segments on the lower bar indicate the fraction of residues that contain outliers for ≥ 3 , 2, 1 and 0 types of geometric quality criteria. The upper red bar (where present) indicates the fraction of residues that have poor fit to the electron density.

Mol	Chain	Length	Quality of chain
1	A	10	

The following table lists non-polymeric compounds that are outliers for geometric or electron-density-fit criteria:

Mol	Type	Chain	Res	Geometry	Electron density
2	RML	A	102	-	X

2 Entry composition i

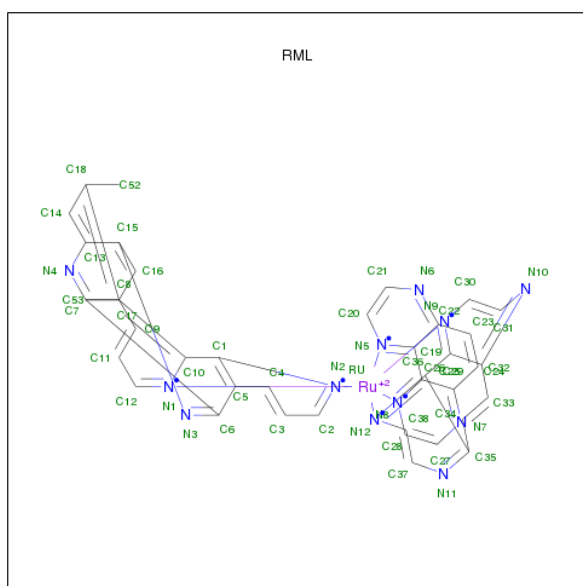
There are 4 unique types of molecules in this entry. The entry contains 312 atoms, of which 0 are hydrogen and 0 are deuterium.

In the tables below, the ZeroOcc column contains the number of atoms modelled with zero occupancy, the AltConf column contains the number of residues with at least one atom in alternate conformation and the Trace column contains the number of residues modelled with at most 2 atoms.

- Molecule 1 is a DNA chain called DNA decamer sequence.

Mol	Chain	Residues	Atoms					ZeroOcc	AltConf	Trace
1	A	10	Total	C	N	O	P	0	0	0
			193	91	38	55	9			

- Molecule 2 is (11,12-DIMETHYLDIPYRIDO[3,2-A:2',3'-C]PHENAZINE-KAPPA 2 N 4 , N 5) [BIS(PYRAZINO[2,3-F]QUINOXALINE-KAPPA 2 N 1 , N 10)] RUTHENIUM(2+) (three-letter code: RML) (formula: $C_{40}H_{26}N_{12}Ru$).



Mol	Chain	Residues	Atoms				ZeroOcc	AltConf
2	A	1	Total	C	N	Ru	0	0
			53	40	12	1		
2	A	1	Total	C	N	Ru	0	0
			53	40	12	1		

- Molecule 3 is BARIUM ION (three-letter code: BA) (formula: Ba).

Mol	Chain	Residues	Atoms		ZeroOcc	AltConf
3	A	1	Total 1	Ba 1	0	0

- Molecule 4 is water.

Mol	Chain	Residues	Atoms		ZeroOcc	AltConf
4	A	12	Total 12	O 12	0	0

3 Residue-property plots

These plots are drawn for all protein, RNA and DNA chains in the entry. The first graphic for a chain summarises the proportions of errors displayed in the second graphic. The second graphic shows the sequence view annotated by issues in geometry and electron density. Residues are color-coded according to the number of geometric quality criteria for which they contain at least one outlier: green = 0, yellow = 1, orange = 2 and red = 3 or more. A red dot above a residue indicates a poor fit to the electron density ($RSRZ > 2$). Stretches of 2 or more consecutive residues without any outlier are shown as a green connector. Residues present in the sample, but not in the model, are shown in grey.

- Molecule 1: DNA decamer sequence

Chain A: 



4 Data and refinement statistics

Property	Value	Source
Space group	P 43 21 2	Depositor
Cell constants a, b, c, α , β , γ	52.22Å 52.22Å 34.52Å 90.00° 90.00° 90.00°	Depositor
Resolution (Å)	36.93 – 2.05 28.80 – 2.05	Depositor EDS
% Data completeness (in resolution range)	97.8 (36.93-2.05) 97.8 (28.80-2.05)	Depositor EDS
R_{merge}	(Not available)	Depositor
R_{sym}	(Not available)	Depositor
$\langle I/\sigma(I) \rangle$ ¹	2.58 (at 2.04Å)	Xtriage
Refinement program	REFMAC 5.7.0029	Depositor
R, R_{free}	0.245 , 0.321 0.250 , 0.334	Depositor DCC
R_{free} test set	138 reflections (4.53%)	DCC
Wilson B-factor (Å ²)	49.9	Xtriage
Anisotropy	0.036	Xtriage
Bulk solvent k_{sol} (e/Å ³), B_{sol} (Å ²)	0.44 , 55.6	EDS
Estimated twinning fraction	No twinning to report.	Xtriage
L-test for twinning	$\langle L \rangle = 0.48$, $\langle L^2 \rangle = 0.31$	Xtriage
Outliers	0 of 3186 reflections	Xtriage
F_o, F_c correlation	0.93	EDS
Total number of atoms	312	wwPDB-VP
Average B, all atoms (Å ²)	46.0	wwPDB-VP

Xtriage's analysis on translational NCS is as follows: *The largest off-origin peak in the Patterson function is 10.25% of the height of the origin peak. No significant pseudotranslation is detected.*

¹Intensities estimated from amplitudes.

5 Model quality ⓘ

5.1 Standard geometry ⓘ

Bond lengths and bond angles in the following residue types are not validated in this section: BA, RML

The Z score for a bond length (or angle) is the number of standard deviations the observed value is removed from the expected value. A bond length (or angle) with $|Z| > 5$ is considered an outlier worth inspection. RMSZ is the root-mean-square of all Z scores of the bond lengths (or angles).

Mol	Chain	Bond lengths		Bond angles	
		RMSZ	# Z >5	RMSZ	# Z >5
1	A	1.19	3/215 (1.4%)	1.09	3/329 (0.9%)

All (3) bond length outliers are listed below:

Mol	Chain	Res	Type	Atoms	Z	Observed(Å)	Ideal(Å)
1	A	3	DG	O3'-P	-7.04	1.52	1.61
1	A	2	DC	O3'-P	-6.74	1.53	1.61
1	A	7	DC	O3'-P	-5.57	1.54	1.61

All (3) bond angle outliers are listed below:

Mol	Chain	Res	Type	Atoms	Z	Observed(°)	Ideal(°)
1	A	7	DC	O5'-P-OP2	-9.01	97.59	105.70
1	A	7	DC	C1'-O4'-C4'	-6.12	103.98	110.10
1	A	7	DC	O4'-C4'-C3'	-5.29	102.38	104.50

There are no chirality outliers.

There are no planarity outliers.

5.2 Close contacts ⓘ

In the following table, the Non-H and H(model) columns list the number of non-hydrogen atoms and hydrogen atoms in the chain respectively. The H(added) column lists the number of hydrogens added by MolProbity. The Clashes column lists the number of clashes within the asymmetric unit, and the number in parentheses is this value normalized per 1000 atoms of the molecule in the chain. The Symm-Clashes column gives symmetry related clashes, in the same way as for the Clashes column.

Mol	Chain	Non-H	H(model)	H(added)	Clashes	Symm-Clashes
1	A	193	0	102	0	1
2	A	106	0	52	0	13
3	A	1	0	0	0	0
4	A	12	0	0	0	0
All	All	312	0	154	0	13

Clashscore is defined as the number of clashes calculated for the entry per 1000 atoms (including hydrogens) of the entry. The overall clashscore for this entry is 0.

There are no clashes within the asymmetric unit.

All (13) symmetry-related close contacts are listed below. The label for Atom-2 includes the symmetry operator and encoded unit-cell translations to be applied.

Atom-1	Atom-2	Distance(Å)	Clash(Å)
2:A:102:RML:N8	2:A:102:RML:N8[7_555]	0.56	1.64
2:A:102:RML:N8	2:A:102:RML:C28[7_555]	1.52	0.68
2:A:102:RML:C28	2:A:102:RML:C26[7_555]	1.82	0.38
2:A:102:RML:N5	2:A:102:RML:N9[7_555]	1.85	0.35
2:A:102:RML:C28	2:A:102:RML:C28[7_555]	1.90	0.30
2:A:102:RML:RU	2:A:102:RML:N8[7_555]	1.91	0.29
2:A:102:RML:N8	2:A:102:RML:C26[7_555]	1.95	0.25
2:A:102:RML:N5	2:A:102:RML:C30[7_555]	1.96	0.24
2:A:102:RML:C19	2:A:102:RML:C30[7_555]	2.00	0.20
2:A:102:RML:C19	2:A:102:RML:N9[7_555]	2.03	0.17
2:A:102:RML:C12	2:A:102:RML:N12[7_555]	2.12	0.08
1:A:2:DC:OP1	2:A:102:RML:N6[6_465]	2.16	0.04
2:A:102:RML:C20	2:A:102:RML:C30[7_555]	2.16	0.04

5.3 Torsion angles

5.3.1 Protein backbone ⓘ

There are no protein chains in this entry.

5.3.2 Protein sidechains ⓘ

There are no protein chains in this entry.

5.3.3 RNA ⓘ

There are no RNA chains in this entry.

5.4 Non-standard residues in protein, DNA, RNA chains ⓘ

There are no non-standard protein/DNA/RNA residues in this entry.

5.5 Carbohydrates ⓘ

There are no carbohydrates in this entry.

5.6 Ligand geometry ⓘ

Of 3 ligands modelled in this entry, 1 is monoatomic - leaving 2 for Mogul analysis.

In the following table, the Counts columns list the number of bonds (or angles) for which Mogul statistics could be retrieved, the number of bonds (or angles) that are observed in the model and the number of bonds (or angles) that are defined in the chemical component dictionary. The Link column lists molecule types, if any, to which the group is linked. The Z score for a bond length (or angle) is the number of standard deviations the observed value is removed from the expected value. A bond length (or angle) with $|Z| > 2$ is considered an outlier worth inspection. RMSZ is the root-mean-square of all Z scores of the bond lengths (or angles).

Mol	Type	Chain	Res	Link	Bond lengths			Bond angles		
					Counts	RMSZ	$\# Z > 2$	Counts	RMSZ	$\# Z > 2$
2	RML	A	101	-	66,66,66	4.98	23 (34%)	86,113,113	3.56	46 (53%)
2	RML	A	102	-	66,66,66	3.86	24 (36%)	86,113,113	3.98	44 (51%)

In the following table, the Chirals column lists the number of chiral outliers, the number of chiral centers analysed, the number of these observed in the model and the number defined in the chemical component dictionary. Similar counts are reported in the Torsion and Rings columns. '-' means no outliers of that kind were identified.

Mol	Type	Chain	Res	Link	Chirals	Torsions	Rings
2	RML	A	101	-	-	0/0/60/60	0/14/14/14
2	RML	A	102	-	-	0/0/60/60	0/14/14/14

All (47) bond length outliers are listed below:

Mol	Chain	Res	Type	Atoms	Z	Observed(Å)	Ideal(Å)
2	A	101	RML	RU-N2	-19.39	1.78	2.07
2	A	101	RML	RU-N5	-16.98	1.81	2.07
2	A	101	RML	RU-N8	-16.88	1.81	2.07
2	A	101	RML	RU-N9	-14.20	1.85	2.07
2	A	102	RML	RU-N5	-13.80	1.86	2.07
2	A	102	RML	RU-N2	-13.30	1.87	2.07

Continued on next page...

Continued from previous page...

Mol	Chain	Res	Type	Atoms	Z	Observed(Å)	Ideal(Å)
2	A	101	RML	RU-N1	-11.51	1.89	2.07
2	A	101	RML	RU-N12	-11.31	1.90	2.07
2	A	102	RML	RU-N1	-11.28	1.90	2.07
2	A	102	RML	C29-N9	9.55	1.52	1.37
2	A	102	RML	RU-N9	-7.33	1.96	2.07
2	A	102	RML	C26-N8	6.21	1.46	1.37
2	A	102	RML	C28-N8	6.13	1.44	1.33
2	A	102	RML	RU-N12	-5.87	1.98	2.07
2	A	102	RML	C30-N9	5.68	1.43	1.33
2	A	101	RML	C30-N9	4.99	1.42	1.33
2	A	102	RML	C32-N10	-4.73	1.29	1.37
2	A	101	RML	C7-N4	4.48	1.40	1.33
2	A	101	RML	C1-N2	4.20	1.43	1.37
2	A	102	RML	C38-N12	4.11	1.41	1.33
2	A	102	RML	C19-N5	3.95	1.43	1.37
2	A	101	RML	C24-C25	-3.66	1.35	1.41
2	A	102	RML	C8-C7	-3.61	1.37	1.45
2	A	102	RML	C12-N1	3.57	1.40	1.33
2	A	101	RML	C12-N1	3.49	1.39	1.33
2	A	101	RML	C32-N10	-3.43	1.31	1.37
2	A	101	RML	C29-N9	3.39	1.42	1.37
2	A	102	RML	C20-N5	3.38	1.39	1.33
2	A	101	RML	C26-C25	-3.30	1.33	1.40
2	A	101	RML	C25-N7	-3.07	1.32	1.37
2	A	102	RML	C24-C25	-3.06	1.36	1.41
2	A	102	RML	C28-C27	3.00	1.45	1.38
2	A	102	RML	C1-N2	2.91	1.41	1.37
2	A	101	RML	C23-C22	-2.85	1.36	1.41
2	A	102	RML	C7-N4	2.77	1.38	1.33
2	A	101	RML	C8-C10	2.74	1.45	1.40
2	A	101	RML	C2-N2	2.59	1.38	1.33
2	A	102	RML	C2-N2	2.53	1.38	1.33
2	A	102	RML	C8-C10	2.41	1.45	1.40
2	A	101	RML	C8-C7	-2.37	1.40	1.45
2	A	101	RML	C35-N11	-2.29	1.33	1.37
2	A	102	RML	C1-C10	-2.29	1.38	1.43
2	A	102	RML	C30-C31	2.28	1.43	1.38
2	A	101	RML	C27-N7	-2.23	1.28	1.32
2	A	101	RML	C9-C8	-2.23	1.36	1.41
2	A	102	RML	C9-C8	-2.03	1.36	1.41
2	A	101	RML	C22-N6	-2.01	1.33	1.37

All (90) bond angle outliers are listed below:

Mol	Chain	Res	Type	Atoms	Z	Observed(°)	Ideal(°)
2	A	102	RML	C28-N8-C26	-15.44	97.98	117.49
2	A	102	RML	C30-N9-C29	-11.00	103.58	117.49
2	A	101	RML	C20-N5-C19	-10.17	104.64	117.49
2	A	102	RML	C12-N1-C10	-10.00	104.86	117.49
2	A	101	RML	C28-N8-C26	-9.23	105.83	117.49
2	A	102	RML	C25-C26-N8	9.18	130.74	122.76
2	A	101	RML	C30-N9-C29	-9.07	106.03	117.49
2	A	102	RML	C20-N5-C19	-8.08	107.28	117.49
2	A	102	RML	C32-C29-N9	7.81	129.56	122.76
2	A	101	RML	C12-N1-C10	-7.57	107.92	117.49
2	A	101	RML	C2-N2-C1	-7.47	108.05	117.49
2	A	101	RML	C32-C29-N9	6.80	128.67	122.76
2	A	102	RML	C9-C8-C7	-6.51	113.39	122.76
2	A	102	RML	C5-C6-N3	6.29	125.18	118.27
2	A	102	RML	C2-N2-C1	-6.16	109.71	117.49
2	A	101	RML	C38-N12-C36	-6.15	109.72	117.49
2	A	102	RML	C5-C1-N2	5.95	129.21	122.86
2	A	101	RML	C35-C36-N12	5.94	127.92	122.76
2	A	101	RML	C21-N6-C22	-5.86	108.47	116.92
2	A	102	RML	C11-C12-N1	5.84	131.71	122.70
2	A	102	RML	C7-C6-N3	-5.79	115.60	121.92
2	A	101	RML	C5-C1-N2	5.71	128.96	122.86
2	A	101	RML	C6-N3-C15	5.42	123.00	116.68
2	A	102	RML	C27-C28-N8	5.35	131.52	121.43
2	A	101	RML	C22-C19-N5	5.07	127.17	122.76
2	A	102	RML	C11-C9-C8	-5.04	111.97	120.76
2	A	101	RML	C7-C6-N3	-4.98	116.48	121.92
2	A	102	RML	C38-N12-C36	-4.93	111.25	117.49
2	A	102	RML	C16-C15-C13	-4.91	114.36	119.46
2	A	102	RML	C36-C29-C32	-4.87	109.86	119.60
2	A	101	RML	C8-C10-N1	4.77	127.95	122.86
2	A	101	RML	C27-N7-C25	-4.68	110.17	116.92
2	A	102	RML	C9-C8-C10	4.61	123.20	117.75
2	A	101	RML	C25-C26-N8	4.59	126.76	122.76
2	A	101	RML	C5-C6-N3	4.58	123.30	118.27
2	A	101	RML	C8-C7-N4	4.54	123.26	118.27
2	A	102	RML	C5-C1-C10	-4.35	115.85	120.62
2	A	101	RML	C5-C1-C10	-4.29	115.92	120.62
2	A	101	RML	C26-C25-N7	4.20	126.06	120.86
2	A	101	RML	C10-C8-C7	4.13	124.25	119.15
2	A	101	RML	C8-C7-C6	-4.07	116.06	120.10
2	A	101	RML	C24-C25-N7	-4.06	112.45	118.55
2	A	102	RML	C27-N7-C25	-4.05	111.09	116.92

Continued on next page...

Continued from previous page...

Mol	Chain	Res	Type	Atoms	Z	Observed(°)	Ideal(°)
2	A	102	RML	C15-C13-N4	-4.01	117.43	121.40
2	A	102	RML	C29-C36-N12	-3.96	111.89	116.58
2	A	101	RML	C1-C5-C6	3.95	124.03	119.15
2	A	101	RML	C33-C34-C35	-3.91	115.68	120.83
2	A	102	RML	C24-C25-N7	-3.89	112.70	118.55
2	A	101	RML	C26-C19-N5	-3.85	112.02	116.58
2	A	102	RML	C33-C34-C35	-3.75	115.89	120.83
2	A	101	RML	C19-C22-N6	3.74	125.49	120.86
2	A	101	RML	C1-C10-N1	-3.71	112.18	116.58
2	A	102	RML	C33-C32-N10	-3.70	112.99	118.55
2	A	102	RML	C1-C5-C6	3.62	123.62	119.15
2	A	102	RML	C8-C10-N1	3.58	126.68	122.86
2	A	102	RML	C19-C26-N8	-3.51	112.43	116.58
2	A	102	RML	C22-C19-N5	3.46	125.77	122.76
2	A	102	RML	C10-C8-C7	3.45	123.42	119.15
2	A	102	RML	C36-C29-N9	3.34	120.53	116.58
2	A	101	RML	C9-C8-C7	-3.33	117.97	122.76
2	A	101	RML	C15-C13-N4	-3.23	118.20	121.40
2	A	101	RML	C12-C11-C9	3.22	124.00	119.41
2	A	102	RML	C26-C25-N7	3.20	124.82	120.86
2	A	101	RML	C27-C28-N8	3.04	127.17	121.43
2	A	101	RML	C11-C9-C8	-2.89	115.72	120.76
2	A	102	RML	C33-C32-C29	2.88	126.27	119.48
2	A	101	RML	C4-C5-C6	-2.86	118.64	122.76
2	A	102	RML	C13-C15-N3	2.86	124.23	121.40
2	A	101	RML	C29-C36-N12	-2.83	113.23	116.58
2	A	101	RML	C7-N4-C13	2.81	119.96	116.68
2	A	101	RML	C21-C20-N5	2.80	126.71	121.43
2	A	101	RML	C33-C32-N10	-2.79	114.36	118.55
2	A	101	RML	C24-C23-C22	-2.74	117.23	120.83
2	A	102	RML	C6-N3-C15	2.71	119.84	116.68
2	A	102	RML	C26-C19-N5	-2.68	113.41	116.58
2	A	101	RML	C14-C13-N4	2.65	122.55	118.93
2	A	101	RML	C20-C21-N6	2.60	127.45	123.43
2	A	102	RML	C1-C10-N1	-2.60	113.51	116.58
2	A	102	RML	C21-C20-N5	2.57	126.29	121.43
2	A	102	RML	C21-N6-C22	-2.54	113.26	116.92
2	A	101	RML	C23-C22-N6	-2.47	114.84	118.55
2	A	102	RML	C29-C36-C35	2.40	124.40	119.60
2	A	102	RML	C14-C13-C15	2.38	121.94	119.46
2	A	101	RML	C36-C35-N11	-2.35	117.95	120.86
2	A	101	RML	C11-C12-N1	2.30	126.24	122.70

Continued on next page...

Continued from previous page...

Mol	Chain	Res	Type	Atoms	Z	Observed(°)	Ideal(°)
2	A	101	RML	C2-C3-C4	2.18	122.52	119.41
2	A	102	RML	C6-C7-N4	2.17	124.28	121.92
2	A	101	RML	C33-C32-C29	2.08	124.38	119.48
2	A	102	RML	C37-C38-N12	2.02	125.24	121.43
2	A	102	RML	C8-C7-C6	-2.01	118.10	120.10

There are no chirality outliers.

There are no torsion outliers.

There are no ring outliers.

5.7 Other polymers ⓘ

There are no such residues in this entry.

5.8 Polymer linkage issues

There are no chain breaks in this entry.

6 Fit of model and data ⓘ

6.1 Protein, DNA and RNA chains ⓘ

In the following table, the column labelled ‘#RSRZ> 2’ contains the number (and percentage) of RSRZ outliers, followed by percent RSRZ outliers for the chain as percentile scores relative to all X-ray entries and entries of similar resolution. The OWAB column contains the minimum, median, 95th percentile and maximum values of the occupancy-weighted average B-factor per residue. The column labelled ‘Q< 0.9’ lists the number of (and percentage) of residues with an average occupancy less than 0.9.

Mol	Chain	Analysed	<RSRZ>	#RSRZ>2	OWAB(Å ²)	Q<0.9
1	A	10/10 (100%)	0.92	1 (10%) 8 7	36, 42, 51, 65	0

All (1) RSRZ outliers are listed below:

Mol	Chain	Res	Type	RSRZ
1	A	1	DT	4.1

6.2 Non-standard residues in protein, DNA, RNA chains ⓘ

There are no non-standard protein/DNA/RNA residues in this entry.

6.3 Carbohydrates ⓘ

There are no carbohydrates in this entry.

6.4 Ligands ⓘ

In the following table, the Atoms column lists the number of modelled atoms in the group and the number defined in the chemical component dictionary. LLDF column lists the quality of electron density of the group with respect to its neighbouring residues in protein, DNA or RNA chains. The B-factors column lists the minimum, median, 95th percentile and maximum values of B factors of atoms in the group. The column labelled ‘Q< 0.9’ lists the number of atoms with occupancy less than 0.9.

Mol	Type	Chain	Res	Atoms	RSR	LLDF	B-factors(Å ²)	Q<0.9
2	RML	A	102	53/53	0.52	1.97	34,57,95,220	34
3	BA	A	103	1/1	0.22	0.99	41,41,41,41	0
2	RML	A	101	53/53	0.19	-0.06	31,38,45,48	0

6.5 Other polymers ⓘ

There are no such residues in this entry.