



Full wwPDB X-ray Structure Validation Report

Feb 26, 2014 – 11:42 PM GMT

PDB ID : 1M6C
Title : V68N MYOGLOBIN WITH CO
Authors : Murshudov, G.N.; Krzywda, S.; Brzozowski, A.M.; Jaskolski, M.; Scott, E.E.;
Klizas, S.A.; Gibson, Q.H.; Olson, J.S.; Wilkinson, A.J.
Deposited on : 1998-08-12
Resolution : 1.90 Å(reported)

This is a full wwPDB validation report for a publicly released PDB entry.
We welcome your comments at validation@mail.wwpdb.org
A user guide is available at <http://wwpdb.org/ValidationPDFNotes.html>

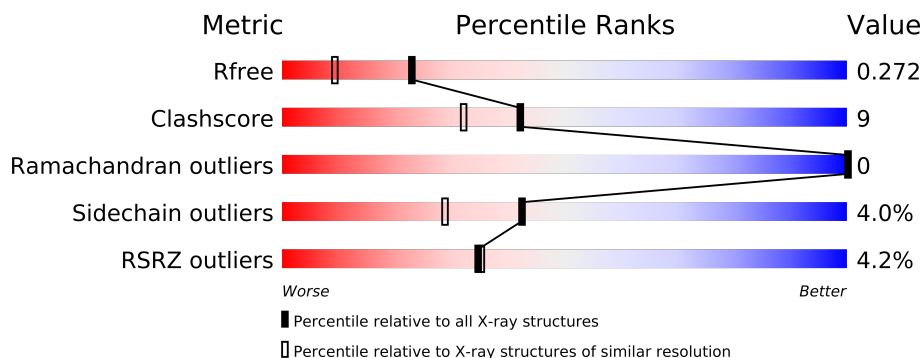
The following versions of software and data (see [references](#)) were used in the production of this report:

MolProbity : 4.02b-467
Mogul : 1.15 2013
Xtriage (Phenix) : dev-1323
EDS : stable22639
Percentile statistics : 21963
Refmac : 5.8.0049
CCP4 : 6.3.0 (Settle)
Ideal geometry (proteins) : Engh & Huber (2001)
Ideal geometry (DNA, RNA) : Parkinson et. al. (1996)
Validation Pipeline (wwPDB-VP) : stable22683

1 Overall quality at a glance

The reported resolution of this entry is 1.90 Å.

Percentile scores (ranging between 0-100) for global validation metrics of the entry are shown in the following graphic. The table shows the number of entries on which the scores are based.



Metric	Whole archive (#Entries)	Similar resolution (#Entries, resolution range(Å))
R_{free}	66092	3684 (1.90-1.90)
Clashscore	79885	4465 (1.90-1.90)
Ramachandran outliers	78287	4413 (1.90-1.90)
Sidechain outliers	78261	4414 (1.90-1.90)
RSRZ outliers	66119	3686 (1.90-1.90)

The table below summarises the geometric issues observed across the polymeric chains and their fit to the electron density. The red, orange, yellow and green segments on the lower bar indicate the fraction of residues that contain outliers for ≥ 3 , 2, 1 and 0 types of geometric quality criteria. The upper red bar (where present) indicates the fraction of residues that have poor fit to the electron density.

Mol	Chain	Length	Quality of chain
1	A	153	
1	B	153	

2 Entry composition i

There are 4 unique types of molecules in this entry. The entry contains 3049 atoms, of which 0 are hydrogen and 0 are deuterium.

In the tables below, the ZeroOcc column contains the number of atoms modelled with zero occupancy, the AltConf column contains the number of residues with at least one atom in alternate conformation and the Trace column contains the number of residues modelled with at most 2 atoms.

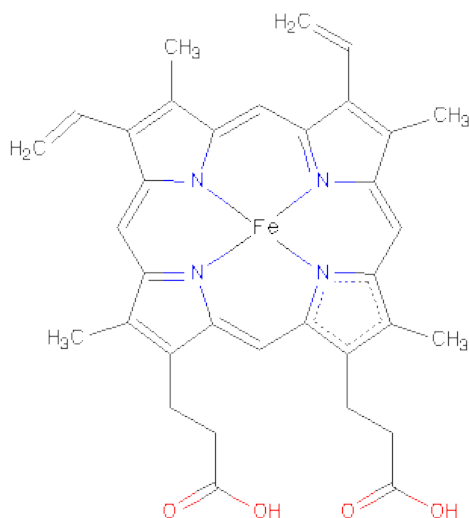
- Molecule 1 is a protein called PROTEIN (MYOGLOBIN).

Mol	Chain	Residues	Atoms					ZeroOcc	AltConf	Trace
1	A	153	Total	C	N	O	S	5	11	0
			1238	788	216	231	3			
1	B	153	Total	C	N	O	S	17	9	0
			1234	783	216	232	3			

There are 2 discrepancies between the modelled and reference sequences:

Chain	Residue	Modelled	Actual	Comment	Reference
A	68	ASN	VAL	ENGINEERED	UNP P02189
B	68	ASN	VAL	ENGINEERED	UNP P02189

- Molecule 2 is PROTOPORPHYRIN IX CONTAINING FE (three-letter code: HEM) (formula: $C_{34}H_{32}FeN_4O_4$).



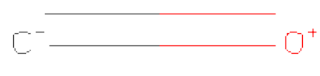
Mol	Chain	Residues	Atoms					ZeroOcc	AltConf
2	A	1	Total	C	Fe	N	O	0	0
			43	34	1	4	4		

Continued on next page...

Continued from previous page...

Mol	Chain	Residues	Atoms					ZeroOcc	AltConf
2	B	1	Total	C	Fe	N	O	0	0
			43	34	1	4	4		

- Molecule 3 is CARBON MONOXIDE (three-letter code: CMO) (formula: CO).



Mol	Chain	Residues	Atoms			ZeroOcc	AltConf
3	A	1	Total	C	O	0	0
			2	1	1		
3	B	1	Total	C	O	0	0
			2	1	1		

- Molecule 4 is water.

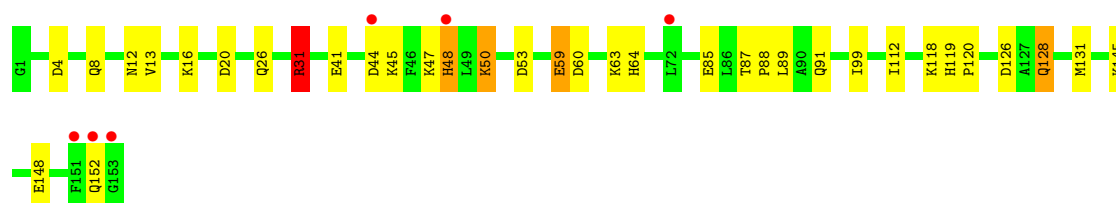
Mol	Chain	Residues	Atoms		ZeroOcc	AltConf
4	A	268	Total	O	0	0
			268	268		
4	B	219	Total	O	0	0
			219	219		

3 Residue-property plots

These plots are drawn for all protein, RNA and DNA chains in the entry. The first graphic for a chain summarises the proportions of errors displayed in the second graphic. The second graphic shows the sequence view annotated by issues in geometry and electron density. Residues are color-coded according to the number of geometric quality criteria for which they contain at least one outlier: green = 0, yellow = 1, orange = 2 and red = 3 or more. A red dot above a residue indicates a poor fit to the electron density ($RSRZ > 2$). Stretches of 2 or more consecutive residues without any outlier are shown as a green connector. Residues present in the sample, but not in the model, are shown in grey.

• Molecule 1: PROTEIN (MYOGLOBIN)

Chain A: 



• Molecule 1: PROTEIN (MYOGLOBIN)

Chain B: 



4 Data and refinement statistics

Property	Value	Source
Space group	I 1 21 1	Depositor
Cell constants a, b, c, α , β , γ	122.14Å 42.30Å 91.55Å 90.00° 92.49° 90.00°	Depositor
Resolution (Å)	24.00 – 1.90 24.88 – 1.89	Depositor EDS
% Data completeness (in resolution range)	94.0 (24.00-1.90) 94.6 (24.88-1.89)	Depositor EDS
R_{merge}	0.06	Depositor
R_{sym}	0.06	Depositor
$\langle I/\sigma(I) \rangle$ ¹	3.56 (at 1.89Å)	Xtriage
Refinement program	REFMAC	Depositor
R, R_{free}	0.192 , 0.261 0.205 , 0.272	Depositor DCC
R_{free} test set	1807 reflections (5.32%)	DCC
Wilson B-factor (Å ²)	24.3	Xtriage
Anisotropy	0.539	Xtriage
Bulk solvent k_{sol} (e/Å ³), B_{sol} (Å ²)	0.39 , 45.2	EDS
Estimated twinning fraction	0.178 for -h,-k,l	Xtriage
L-test for twinning	$\langle L \rangle = 0.51$, $\langle L^2 \rangle = 0.34$	Xtriage
Outliers	0 of 17909 reflections	Xtriage
F_o, F_c correlation	0.94	EDS
Total number of atoms	3049	wwPDB-VP
Average B, all atoms (Å ²)	30.0	wwPDB-VP

Xtriage's analysis on translational NCS is as follows: *The analyses of the Patterson function reveals a significant off-origin peak that is 100.00 % of the origin peak, indicating pseudo translational symmetry. The chance of finding a peak of this or larger height randomly in a structure without pseudo translational symmetry is equal to 0.0000e+00. The detected translational NCS is most likely also responsible for the elevated intensity ratio.*

¹Intensities estimated from amplitudes.

5 Model quality i

5.1 Standard geometry i

Bond lengths and bond angles in the following residue types are not validated in this section: CMO, HEM

The Z score for a bond length (or angle) is the number of standard deviations the observed value is removed from the expected value. A bond length (or angle) with $|Z| > 5$ is considered an outlier worth inspection. RMSZ is the root-mean-square of all Z scores of the bond lengths (or angles).

Mol	Chain	Bond lengths		Bond angles	
		RMSZ	$\# Z > 5$	RMSZ	$\# Z > 5$
1	A	0.90	0/1308	1.60	13/1749 (0.7%)
1	B	1.03	2/1295 (0.2%)	1.68	22/1734 (1.3%)
All	All	0.97	2/2603 (0.1%)	1.64	35/3483 (1.0%)

All (2) bond length outliers are listed below:

Mol	Chain	Res	Type	Atoms	Z	Observed(Å)	Ideal(Å)
1	B	98	LYS	CD-CE	11.82	1.80	1.51
1	B	109	GLU	CD-OE1	6.80	1.33	1.25

All (35) bond angle outliers are listed below:

Mol	Chain	Res	Type	Atoms	Z	Observed(°)	Ideal(°)
1	B	109	GLU	OE1-CD-OE2	-9.79	111.56	123.30
1	B	53	ASP	CB-CG-OD2	-9.47	109.78	118.30
1	B	146	TYR	CB-CG-CD2	-9.34	115.40	121.00
1	A	31	ARG	NE-CZ-NH1	8.63	124.62	120.30
1	B	16	LYS	CG-CD-CE	8.44	137.23	111.90
1	B	47	LYS	CB-CA-C	7.87	126.14	110.40
1	A	4	ASP	CB-CG-OD1	7.86	125.37	118.30
1	B	106	PHE	CB-CG-CD2	-7.80	115.34	120.80
1	A	85	GLU	OE1-CD-OE2	-7.69	114.07	123.30
1	A	126	ASP	CB-CG-OD1	7.48	125.03	118.30
1	A	48	HIS	CA-CB-CG	-7.20	101.36	113.60
1	B	126	ASP	CB-CG-OD1	6.56	124.20	118.30
1	B	152	GLN	N-CA-CB	6.32	121.98	110.60
1	B	85	GLU	OE1-CD-OE2	-6.22	115.83	123.30
1	B	2	LEU	O-C-N	6.17	132.58	122.70
1	A	31	ARG	CG-CD-NE	5.90	124.20	111.80
1	B	146	TYR	CB-CG-CD1	5.81	124.48	121.00

Continued on next page...

Continued from previous page...

Mol	Chain	Res	Type	Atoms	Z	Observed(°)	Ideal(°)
1	B	31	ARG	CG-CD-NE	5.75	123.87	111.80
1	B	103	TYR	CB-CG-CD2	-5.70	117.58	121.00
1	A	20	ASP	CB-CG-OD1	5.66	123.39	118.30
1	A	50	LYS	CB-CG-CD	5.62	126.22	111.60
1	A	53	ASP	CB-CG-OD2	-5.44	113.40	118.30
1	A	20	ASP	CB-CG-OD2	-5.42	113.42	118.30
1	B	139	ARG	NE-CZ-NH1	-5.41	117.60	120.30
1	B	31	ARG	CA-CB-CG	5.26	124.97	113.40
1	B	145	LYS	N-CA-CB	5.17	119.91	110.60
1	B	83[A]	GLU	CB-CA-C	5.16	120.72	110.40
1	B	83[B]	GLU	CB-CA-C	5.16	120.72	110.40
1	A	118	LYS	O-C-N	-5.14	114.47	122.70
1	B	109	GLU	CB-CG-CD	5.14	128.09	114.20
1	B	31	ARG	NE-CZ-NH1	5.14	122.87	120.30
1	B	128[A]	GLN	CB-CA-C	-5.13	100.13	110.40
1	B	128[B]	GLN	CB-CA-C	-5.13	100.13	110.40
1	A	128[A]	GLN	CB-CA-C	-5.12	100.17	110.40
1	A	128[B]	GLN	CB-CA-C	-5.12	100.17	110.40

There are no chirality outliers.

There are no planarity outliers.

5.2 Close contacts ⓘ

In the following table, the Non-H and H(model) columns list the number of non-hydrogen atoms and hydrogen atoms in the chain respectively. The H(added) column lists the number of hydrogens added by MolProbity. The Clashes column lists the number of clashes within the asymmetric unit, and the number in parentheses is this value normalized per 1000 atoms of the molecule in the chain. The Symm-Clashes column gives symmetry related clashes, in the same way as for the Clashes column.

Mol	Chain	Non-H	H(model)	H(added)	Clashes	Symm-Clashes
1	A	1238	0	1259	19	11
1	B	1234	0	1236	25	9
2	A	43	0	30	2	0
2	B	43	0	30	3	0
3	A	2	0	0	0	0
3	B	2	0	0	0	0
4	A	268	0	0	5	19
4	B	219	0	0	12	3
All	All	3049	0	2555	46	22

Clashscore is defined as the number of clashes calculated for the entry per 1000 atoms (including hydrogens) of the entry. The overall clashscore for this entry is 9.

All (46) close contacts within the same asymmetric unit are listed below.

Atom-1	Atom-2	Distance(Å)	Clash(Å)
1:B:128[B]:GLN:OE1	4:B:225:HOH:O	1.83	0.94
1:B:128[B]:GLN:OE1	4:B:214:HOH:O	1.85	0.93
1:B:27[A]:GLU:HG2	1:B:114:VAL:HG22	1.59	0.84
1:A:87:THR:HG23	1:A:145[A]:LYS:HE2	1.65	0.78
1:B:27[A]:GLU:HG3	4:B:180:HOH:O	1.88	0.74
1:B:27[A]:GLU:HG2	1:B:114:VAL:CG2	2.19	0.72
1:B:18:GLU:OE1	4:B:188:HOH:O	2.09	0.71
1:A:44:ASP:HA	1:A:47:LYS:HD3	1.76	0.67
1:A:44:ASP:O	1:A:47:LYS:HG2	1.96	0.65
1:A:99:ILE:HD12	2:A:154:HEM:HAC	1.81	0.63
1:B:53:ASP:HB3	4:B:280:HOH:O	1.97	0.63
1:B:128[B]:GLN:CD	4:B:214:HOH:O	2.28	0.63
2:B:154:HEM:HBC2	2:B:154:HEM:HMC1	1.79	0.62
1:B:9:LEU:O	1:B:13[A]:VAL:HG12	2.00	0.61
1:B:87:THR:HB	1:B:88:PRO:HD3	1.82	0.61
1:B:45:LYS:HD3	1:B:60:ASP:OD2	2.02	0.59
1:B:63:LYS:HD2	4:B:355:HOH:O	2.04	0.58
1:A:59:GLU:O	1:A:63:LYS:HG3	2.05	0.57
1:B:52:GLU:HG2	1:B:56:LYS:HE2	1.89	0.55
1:B:8:GLN:NE2	4:B:238:HOH:O	2.40	0.53
1:B:128[B]:GLN:HG2	4:B:225:HOH:O	2.08	0.53
1:A:88:PRO:HA	1:A:91:GLN:HE21	1.73	0.52
1:A:148:GLU:HG2	4:A:379:HOH:O	2.10	0.51
1:B:59:GLU:O	1:B:63:LYS:HG3	2.12	0.50
2:B:154:HEM:HBC2	2:B:154:HEM:CMC	2.42	0.50
1:B:128[A]:GLN:NE2	4:B:214:HOH:O	2.39	0.49
1:A:8[B]:GLN:NE2	1:A:12:ASN:OD1	2.42	0.49
1:B:128[B]:GLN:CG	4:B:225:HOH:O	2.60	0.49
1:A:31:ARG:NH1	4:A:219:HOH:O	2.46	0.48
1:B:119:HIS:N	1:B:120:PRO:CD	2.77	0.47
1:B:87:THR:HB	1:B:88:PRO:CD	2.45	0.47
1:A:45:LYS:O	1:A:48:HIS:CE1	2.67	0.47
1:B:42:LYS:HZ2	1:B:98:LYS:HB3	1.80	0.47
1:A:60:ASP:O	1:A:64:HIS:HD2	1.97	0.47
1:B:92:SER:O	1:B:96:LYS:HB2	2.15	0.47
1:A:89:LEU:HD11	2:A:154:HEM:CHB	2.45	0.46
1:A:63:LYS:HG2	4:A:386:HOH:O	2.16	0.45
1:A:26:GLN:NE2	4:A:271:HOH:O	2.49	0.45
1:A:87:THR:HG23	1:A:145[A]:LYS:CE	2.41	0.43

Continued on next page...

Continued from previous page...

Atom-1	Atom-2	Distance(Å)	Clash(Å)
1:A:112[B]:ILE:HD11	1:A:131:MET:HG3	2.01	0.42
1:A:63:LYS:HD2	4:A:394:HOH:O	2.20	0.42
1:B:64:HIS:HE1	2:B:154:HEM:CGD	2.33	0.42
1:B:128[B]:GLN:CD	4:B:225:HOH:O	2.40	0.41
1:A:41:GLU:HA	1:A:47:LYS:HE3	2.02	0.41
1:A:119:HIS:N	1:A:120:PRO:CD	2.84	0.40

All (22) symmetry-related close contacts are listed below. The label for Atom-2 includes the symmetry operator and encoded unit-cell translations to be applied.

Atom-1	Atom-2	Distance(Å)	Clash(Å)
1:B:48[A]:HIS:CE1	4:A:340:HOH:O[1.554]	0.77	1.43
1:A:128[B]:GLN:OE1	4:A:234:HOH:O[2.656]	0.84	1.36
1:B:48[A]:HIS:ND1	4:A:340:HOH:O[1.554]	0.91	1.29
1:A:128[B]:GLN:CD	4:A:234:HOH:O[2.656]	1.10	1.10
1:A:128[A]:GLN:OE1	4:A:199:HOH:O[2.656]	1.12	1.08
1:A:128[B]:GLN:NE2	4:A:188:HOH:O[2.656]	1.50	0.70
1:A:128[A]:GLN:CD	4:A:199:HOH:O[2.656]	1.64	0.56
1:B:48[A]:HIS:CD2	4:A:264:HOH:O[1.554]	1.69	0.51
1:A:128[B]:GLN:CG	4:A:199:HOH:O[2.656]	1.83	0.37
1:B:109:GLU:OE1	4:B:240:HOH:O[2.645]	1.83	0.37
1:A:128[B]:GLN:NE2	4:A:199:HOH:O[2.656]	1.86	0.34
1:A:128[B]:GLN:CD	4:A:199:HOH:O[2.656]	2.00	0.20
1:B:48[A]:HIS:NE2	4:A:340:HOH:O[1.554]	2.02	0.18
1:B:109:GLU:CD	4:B:240:HOH:O[2.645]	2.02	0.18
1:B:83[A]:GLU:OE1	4:A:349:HOH:O[4.555]	2.08	0.12
1:A:128[B]:GLN:CG	4:A:234:HOH:O[2.656]	2.11	0.09
4:A:169:HOH:O	4:A:343:HOH:O[2.656]	2.12	0.08
1:A:128[B]:GLN:NE2	4:A:234:HOH:O[2.656]	2.13	0.07
1:B:48[A]:HIS:CG	4:A:340:HOH:O[1.554]	2.18	0.02
1:A:16:LYS:NZ	4:A:335:HOH:O[2.646]	2.19	0.01
4:B:205:HOH:O	4:B:350:HOH:O[2.645]	2.19	0.01
1:B:83[A]:GLU:OE2	4:A:349:HOH:O[4.555]	2.20	0.00

5.3 Torsion angles

5.3.1 Protein backbone ⓘ

In the following table, the Percentiles column shows the percent Ramachandran outliers of the chain as a percentile score with respect to all X-ray entries followed by that with respect to entries of similar resolution. The Analysed column shows the number of residues for which the backbone conformation was analysed, and the total number of residues.

Mol	Chain	Analysed	Favoured	Allowed	Outliers	Percentiles	
1	A	162/153 (106%)	157 (97%)	5 (3%)	0	100	100
1	B	160/153 (105%)	155 (97%)	5 (3%)	0	100	100
All	All	322/306 (105%)	312 (97%)	10 (3%)	0	100	100

There are no Ramachandran outliers to report.

5.3.2 Protein sidechains ⓘ

In the following table, the Percentiles column shows the percent sidechain outliers of the chain as a percentile score with respect to all X-ray entries followed by that with respect to entries of similar resolution. The Analysed column shows the number of residues for which the sidechain conformation was analysed, and the total number of residues.

Mol	Chain	Analysed	Rotameric	Outliers	Percentiles	
1	A	134/124 (108%)	128 (96%)	6 (4%)	38	24
1	B	132/124 (106%)	127 (96%)	5 (4%)	44	31
All	All	266/248 (107%)	255 (96%)	11 (4%)	42	28

All (11) residues with a non-rotameric sidechain are listed below:

Mol	Chain	Res	Type
1	A	13[A]	VAL
1	A	13[B]	VAL
1	A	31	ARG
1	A	50	LYS
1	A	59	GLU
1	A	152	GLN
1	B	31	ARG
1	B	82	HIS
1	B	98	LYS
1	B	102	LYS
1	B	152	GLN

Some sidechains can be flipped to improve hydrogen bonding and reduce clashes. All (11) such sidechains are listed below:

Mol	Chain	Res	Type
1	A	26	GLN
1	A	64	HIS
1	A	91	GLN

Continued on next page...

Continued from previous page...

Mol	Chain	Res	Type
1	A	140	ASN
1	B	8	GLN
1	B	64	HIS
1	B	66	ASN
1	B	81	HIS
1	B	91	GLN
1	B	116	GLN
1	B	140	ASN

5.3.3 RNA ⓘ

There are no RNA chains in this entry.

5.4 Non-standard residues in protein, DNA, RNA chains ⓘ

There are no non-standard protein/DNA/RNA residues in this entry.

5.5 Carbohydrates ⓘ

There are no carbohydrates in this entry.

5.6 Ligand geometry ⓘ

4 ligands are modelled in this entry.

In the following table, the Counts columns list the number of bonds (or angles) for which Mogul statistics could be retrieved, the number of bonds (or angles) that are observed in the model and the number of bonds (or angles) that are defined in the chemical component dictionary. The Link column lists molecule types, if any, to which the group is linked. The Z score for a bond length (or angle) is the number of standard deviations the observed value is removed from the expected value. A bond length (or angle) with $|Z| > 2$ is considered an outlier worth inspection. RMSZ is the root-mean-square of all Z scores of the bond lengths (or angles).

Mol	Type	Chain	Res	Link	Bond lengths			Bond angles		
					Counts	RMSZ	$\# Z > 2$	Counts	RMSZ	$\# Z > 2$
2	HEM	A	154	1,3	49,50,50	2.95	17 (34%)	46,82,82	2.16	13 (28%)
3	CMO	A	155	2	0,1,1	0.00	-	0,0,0	0.00	-
2	HEM	B	154	1,3	49,50,50	4.03	22 (44%)	46,82,82	3.28	20 (43%)
3	CMO	B	155	2	0,1,1	0.00	-	0,0,0	0.00	-

In the following table, the Chirals column lists the number of chiral outliers, the number of chiral centers analysed, the number of these observed in the model and the number defined in the chemical component dictionary. Similar counts are reported in the Torsion and Rings columns. '-' means no outliers of that kind were identified.

Mol	Type	Chain	Res	Link	Chirals	Torsions	Rings
2	HEM	A	154	1,3	-	0/14/114/114	0/0/8/8
3	CMO	A	155	2	-	0/0/0/0	0/0/0/0
2	HEM	B	154	1,3	-	0/14/114/114	0/0/8/8
3	CMO	B	155	2	-	0/0/0/0	0/0/0/0

All (39) bond length outliers are listed below:

Mol	Chain	Res	Type	Atoms	Z	Observed(Å)	Ideal(Å)
2	B	154	HEM	C2D-C1D	18.00	1.49	1.44
2	B	154	HEM	C2B-C1B	11.22	1.47	1.44
2	A	154	HEM	C2D-C1D	11.16	1.47	1.44
2	B	154	HEM	C3D-C2D	-6.69	1.32	1.43
2	B	154	HEM	C3B-C2B	-6.42	1.32	1.43
2	A	154	HEM	C3B-C2B	-6.38	1.32	1.43
2	A	154	HEM	C3D-C2D	-6.19	1.32	1.43
2	A	154	HEM	C3D-C4D	5.36	1.45	1.44
2	A	154	HEM	C3C-C2C	-5.31	1.34	1.43
2	B	154	HEM	C3C-C2C	-5.19	1.34	1.43
2	A	154	HEM	C3B-CAB	4.91	1.55	1.40
2	B	154	HEM	C1A-NA	4.87	1.46	1.36
2	B	154	HEM	C3C-CAC	4.77	1.55	1.40
2	B	154	HEM	C3B-CAB	4.47	1.54	1.40
2	A	154	HEM	C3C-CAC	4.33	1.54	1.40
2	B	154	HEM	C3B-C4B	4.32	1.49	1.44
2	A	154	HEM	C4A-C3A	4.29	1.45	1.40
2	B	154	HEM	C4C-NC	3.85	1.43	1.38
2	A	154	HEM	C2B-C1B	3.67	1.45	1.44
2	B	154	HEM	CAA-C2A	3.33	1.57	1.52
2	B	154	HEM	FE-ND	3.30	2.09	1.97
2	B	154	HEM	C3D-C4D	3.14	1.45	1.44
2	B	154	HEM	C4A-NA	2.93	1.42	1.36
2	B	154	HEM	CMB-C2B	2.92	1.56	1.47
2	A	154	HEM	CMB-C2B	2.84	1.56	1.47
2	A	154	HEM	CMC-C2C	2.82	1.56	1.47
2	B	154	HEM	CHC-C1C	2.80	1.41	1.36
2	B	154	HEM	C4A-C3A	2.77	1.43	1.40
2	A	154	HEM	CAA-C2A	2.68	1.56	1.52
2	A	154	HEM	C1A-NA	2.62	1.41	1.36
2	B	154	HEM	CMD-C2D	2.60	1.55	1.47

Continued on next page...

Continued from previous page...

Mol	Chain	Res	Type	Atoms	Z	Observed(Å)	Ideal(Å)
2	A	154	HEM	CMD-C2D	2.48	1.55	1.47
2	B	154	HEM	CMA-C3A	2.43	1.56	1.51
2	A	154	HEM	FE-NA	2.42	2.02	1.92
2	B	154	HEM	C4D-ND	-2.20	1.35	1.39
2	B	154	HEM	CHA-C4D	2.17	1.38	1.35
2	A	154	HEM	FE-ND	2.15	2.05	1.97
2	B	154	HEM	FE-NB	2.14	2.05	1.97
2	A	154	HEM	CHA-C4D	2.04	1.38	1.35

All (33) bond angle outliers are listed below:

Mol	Chain	Res	Type	Atoms	Z	Observed(°)	Ideal(°)
2	B	154	HEM	C3B-C4B-NB	-10.63	106.39	114.00
2	A	154	HEM	C3B-C4B-NB	-7.62	108.55	114.00
2	B	154	HEM	CHC-C4B-NB	6.58	130.05	124.58
2	B	154	HEM	CHD-C1D-ND	6.38	129.89	124.58
2	B	154	HEM	C1B-NB-C4B	6.14	111.45	105.16
2	B	154	HEM	CMA-C3A-C4A	-5.44	120.25	128.62
2	B	154	HEM	C4D-ND-C1D	5.44	110.73	105.16
2	B	154	HEM	C2D-C1D-ND	-5.23	106.75	112.93
2	A	154	HEM	CHD-C1D-ND	5.21	128.91	124.58
2	B	154	HEM	C4A-CHB-C1B	-4.96	120.95	127.47
2	B	154	HEM	C4A-NA-C1A	-4.72	100.54	106.76
2	A	154	HEM	C2D-C1D-ND	-4.60	107.50	112.93
2	B	154	HEM	C4C-NC-C1C	-4.04	101.34	105.53
2	B	154	HEM	CMA-C3A-C2A	3.92	132.33	124.94
2	A	154	HEM	C4D-ND-C1D	3.39	108.63	105.16
2	B	154	HEM	C3A-C4A-NA	3.16	111.80	109.41
2	A	154	HEM	C1B-NB-C4B	3.12	108.36	105.16
2	B	154	HEM	CHA-C1A-NA	-2.95	119.66	124.58
2	B	154	HEM	CHB-C1B-NB	2.84	128.21	124.31
2	A	154	HEM	C4A-CHB-C1B	-2.76	123.84	127.47
2	A	154	HEM	CHC-C4B-NB	2.72	126.84	124.58
2	B	154	HEM	CBD-CAD-C3D	-2.66	108.56	114.37
2	A	154	HEM	CHB-C1B-NB	2.62	127.91	124.31
2	A	154	HEM	C3A-C4A-NA	2.60	111.37	109.41
2	B	154	HEM	C3A-C4A-CHB	-2.47	121.32	126.00
2	A	154	HEM	C4A-NA-C1A	-2.42	103.58	106.76
2	B	154	HEM	CMB-C2B-C3B	2.39	131.78	126.16
2	A	154	HEM	CMA-C3A-C4A	-2.36	124.99	128.62
2	A	154	HEM	CBD-CAD-C3D	-2.31	109.34	114.37
2	A	154	HEM	CMD-C2D-C3D	2.30	130.80	125.60

Continued on next page...

Continued from previous page...

Mol	Chain	Res	Type	Atoms	Z	Observed(°)	Ideal(°)
2	B	154	HEM	CHA-C4D-ND	2.24	127.39	124.31
2	B	154	HEM	O1D-CGD-CBD	-2.24	115.34	123.03
2	B	154	HEM	C1A-C2A-C3A	2.05	109.04	106.92

There are no chirality outliers.

There are no torsion outliers.

There are no ring outliers.

5.7 Other polymers ⓘ

There are no such residues in this entry.

5.8 Polymer linkage issues

There are no chain breaks in this entry.

6 Fit of model and data ⓘ

6.1 Protein, DNA and RNA chains ⓘ

In the following table, the column labelled ‘#RSRZ> 2’ contains the number (and percentage) of RSRZ outliers, followed by percent RSRZ outliers for the chain as percentile scores relative to all X-ray entries and entries of similar resolution. The OWAB column contains the minimum, median, 95th percentile and maximum values of the occupancy-weighted average B-factor per residue. The column labelled ‘Q< 0.9’ lists the number of (and percentage) of residues with an average occupancy less than 0.9.

Mol	Chain	Analysed	<RSRZ>	#RSRZ>2	OWAB(Å ²)	Q<0.9
1	A	153/153 (100%)	0.29	6 (3%) 37 38	14, 26, 47, 60	2 (1%)
1	B	153/153 (100%)	0.33	7 (4%) 31 31	14, 25, 47, 88	5 (3%)
All	All	306/306 (100%)	0.31	13 (4%) 35 35	14, 26, 47, 88	7 (2%)

All (13) RSRZ outliers are listed below:

Mol	Chain	Res	Type	RSRZ
1	B	153	GLY	9.6
1	A	153	GLY	5.1
1	A	152	GLN	5.1
1	B	1	GLY	3.3
1	A	48	HIS	3.2
1	B	107	ILE	2.8
1	B	44	ASP	2.6
1	B	151	PHE	2.3
1	B	45	LYS	2.2
1	A	151	PHE	2.1
1	A	44	ASP	2.1
1	A	72	LEU	2.1
1	B	152	GLN	2.0

6.2 Non-standard residues in protein, DNA, RNA chains ⓘ

There are no non-standard protein/DNA/RNA residues in this entry.

6.3 Carbohydrates ⓘ

There are no carbohydrates in this entry.

6.4 Ligands

In the following table, the Atoms column lists the number of modelled atoms in the group and the number defined in the chemical component dictionary. LLDF column lists the quality of electron density of the group with respect to its neighbouring residues in protein, DNA or RNA chains. The B-factors column lists the minimum, median, 95th percentile and maximum values of B factors of atoms in the group. The column labelled 'Q< 0.9' lists the number of atoms with occupancy less than 0.9.

Mol	Type	Chain	Res	Atoms	RSR	LLDF	B-factors(Å ²)	Q<0.9
2	HEM	A	154	43/43	0.15	0.12	13,23,30,38	0
3	CMO	A	155	2/2	0.14	-0.02	21,21,21,25	0
2	HEM	B	154	43/43	0.15	-0.07	14,22,35,38	0
3	CMO	B	155	2/2	0.09	-1.36	22,22,22,24	0

6.5 Other polymers

There are no such residues in this entry.