



# Full wwPDB X-ray Structure Validation Report ⓘ

May 1, 2014 – 08:03 AM EDT

PDB ID : 4MIA  
Title : Hepatitis C Virus polymerase NS5B genotype 1b (BK) in complex with  
RG7109 (N-{4-[6-tert-butyl-5-methoxy-8-(6-methoxy-2-oxo-2,5-dihydro  
pyridin-3-yl)quinolin-3-yl]phenyl}methanesulfonamide)  
Authors : Harris, S.F.; Villasenor, A.G.  
Deposited on : 2013-08-30  
Resolution : 2.80 Å(reported)

This is a full wwPDB validation report for a publicly released PDB entry.  
We welcome your comments at [validation@mail.wwpdb.org](mailto:validation@mail.wwpdb.org)  
A user guide is available at <http://wwpdb.org/ValidationPDFNotes.html>

---

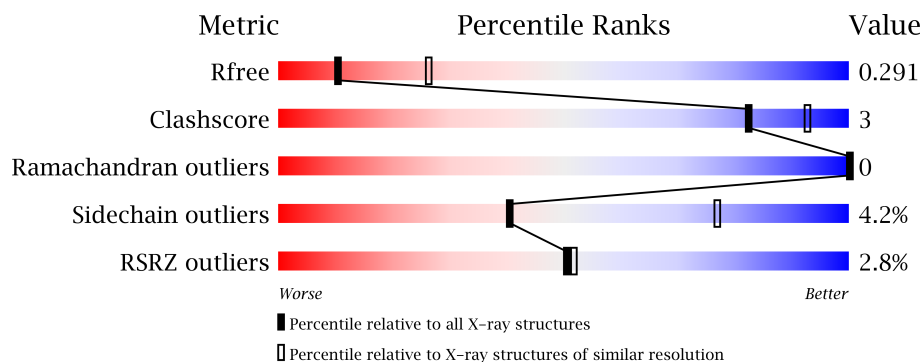
The following versions of software and data (see [references](#)) were used in the production of this report:

MolProbity : 4.02b-467  
Mogul : 1.16 November 2013  
Xtriage (Phenix) : dev-1439  
EDS : stable22978  
Percentile statistics : 21963  
Refmac : 5.8.0049  
CCP4 : 6.3.0 (Settle)  
Ideal geometry (proteins) : Engh & Huber (2001)  
Ideal geometry (DNA, RNA) : Parkinson et. al. (1996)  
Validation Pipeline (wwPDB-VP) : stable22978

# 1 Overall quality at a glance

The reported resolution of this entry is 2.80 Å.

Percentile scores (ranging between 0-100) for global validation metrics of the entry are shown in the following graphic. The table shows the number of entries on which the scores are based.



Metric	Whole archive (#Entries)	Similar resolution (#Entries, resolution range(Å))
$R_{free}$	66092	1799 (2.80-2.80)
Clashscore	79885	2295 (2.80-2.80)
Ramachandran outliers	78287	2252 (2.80-2.80)
Sidechain outliers	78261	2254 (2.80-2.80)
RSRZ outliers	66119	1802 (2.80-2.80)

The table below summarises the geometric issues observed across the polymeric chains and their fit to the electron density. The red, orange, yellow and green segments on the lower bar indicate the fraction of residues that contain outliers for  $\geq 3$ , 2, 1 and 0 types of geometric quality criteria. The upper red bar (where present) indicates the fraction of residues that have poor fit to the electron density.

Mol	Chain	Length	Quality of chain
1	A	570	
1	B	570	

The following table lists non-polymeric compounds that are outliers for geometric or electron-density-fit criteria:

Mol	Type	Chain	Res	Geometry	Electron density
3	28L	B	602	-	X

## 2 Entry composition

There are 4 unique types of molecules in this entry. The entry contains 8896 atoms, of which 0 are hydrogen and 0 are deuterium.

In the tables below, the ZeroOcc column contains the number of atoms modelled with zero occupancy, the AltConf column contains the number of residues with at least one atom in alternate conformation and the Trace column contains the number of residues modelled with at most 2 atoms.

- Molecule 1 is a protein called RNA-directed RNA polymerase.

Mol	Chain	Residues	Atoms					ZeroOcc	AltConf	Trace
1	A	546	Total	C	N	O	S	0	6	0
			4300	2712	759	794	35			
1	B	545	Total	C	N	O	S	0	6	0
			4292	2706	758	793	35			

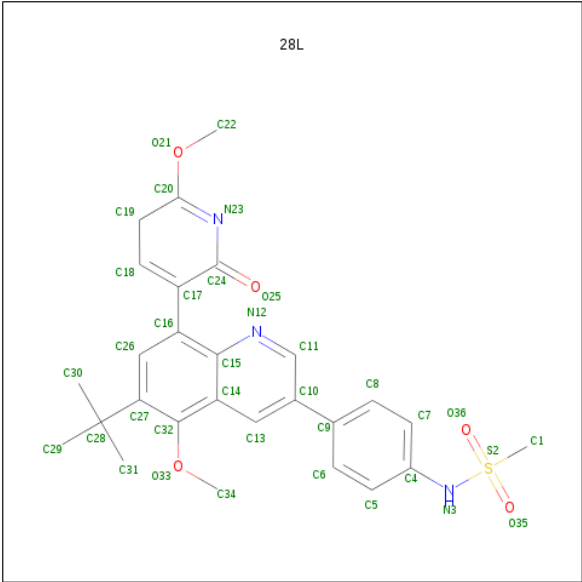
There are 2 discrepancies between the modelled and reference sequences:

Chain	Residue	Modelled	Actual	Comment	Reference
A	1	HIS	-	EXPRESSION TAG	UNP P26663
B	1	HIS	-	EXPRESSION TAG	UNP P26663

- Molecule 2 is ZINC ION (three-letter code: ZN) (formula: Zn).

Mol	Chain	Residues	Atoms		ZeroOcc	AltConf
2	B	1	Total	Zn	0	0
			1	1		
2	A	1	Total	Zn	0	0
			1	1		

- Molecule 3 is N-{4-[6-TERT-BUTYL-5-METHOXY-8-(6-METHOXY-2-OXO-2,5-DIHYDROPYRIDIN-3-YL)QUINOLIN-3-YL]PHENYL}METHANESULFONAMIDE (three-letter code: 28L) (formula: C<sub>27</sub>H<sub>29</sub>N<sub>3</sub>O<sub>5</sub>S).



Mol	Chain	Residues	Atoms					ZeroOcc	AltConf
3	A	1	Total	C	N	O	S	0	0
			36	27	3	5	1		
3	B	1	Total	C	N	O	S	0	0
			36	27	3	5	1		

- Molecule 4 is water.

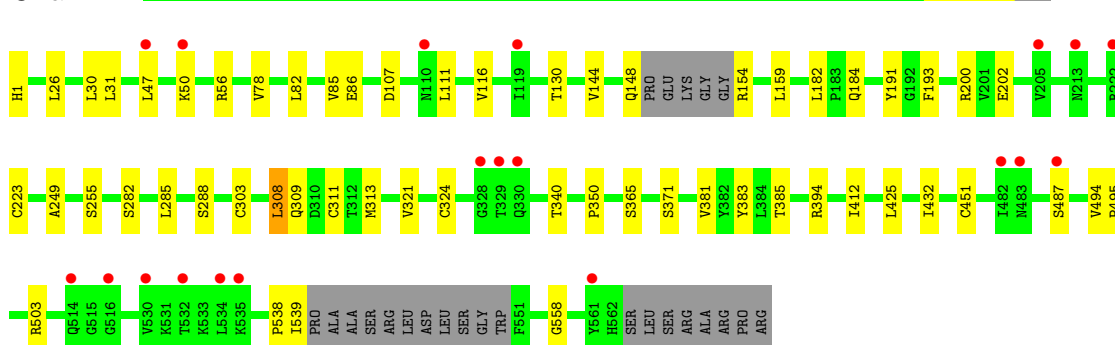
Mol	Chain	Residues	Atoms		ZeroOcc	AltConf
4	A	118	Total	O	0	0
			118	118		
4	B	112	Total	O	0	0
			112	112		

### 3 Residue-property plots

These plots are drawn for all protein, RNA and DNA chains in the entry. The first graphic for a chain summarises the proportions of errors displayed in the second graphic. The second graphic shows the sequence view annotated by issues in geometry and electron density. Residues are color-coded according to the number of geometric quality criteria for which they contain at least one outlier: green = 0, yellow = 1, orange = 2 and red = 3 or more. A red dot above a residue indicates a poor fit to the electron density ( $RSRZ > 2$ ). Stretches of 2 or more consecutive residues without any outlier are shown as a green connector. Residues present in the sample, but not in the model, are shown in grey.

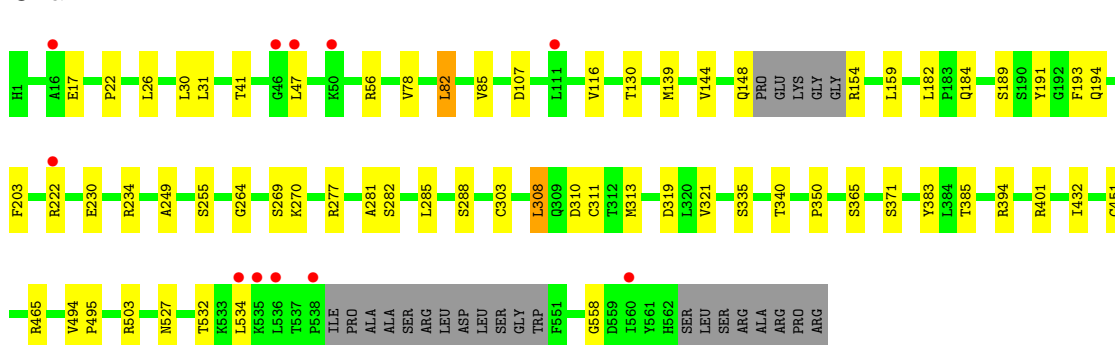
#### • Molecule 1: RNA-directed RNA polymerase

Chain A:



#### • Molecule 1: RNA-directed RNA polymerase

Chain B:



## 4 Data and refinement statistics

Property	Value	Source
Space group	P 21 21 21	Depositor
Cell constants a, b, c, $\alpha$ , $\beta$ , $\gamma$	84.98Å 104.82Å 125.28Å 90.00° 90.00° 90.00°	Depositor
Resolution (Å)	38.80 – 2.80 38.80 – 2.80	Depositor EDS
% Data completeness (in resolution range)	99.8 (38.80-2.80) 99.7 (38.80-2.80)	Depositor EDS
$R_{merge}$	0.19	Depositor
$R_{sym}$	(Not available)	Depositor
$\langle I/\sigma(I) \rangle$ <sup>1</sup>	2.06 (at 2.81Å)	Xtriage
Refinement program	BUSTER 2.11.4	Depositor
R, $R_{free}$	0.202 , 0.279 0.217 , 0.291	Depositor DCC
$R_{free}$ test set	1432 reflections (5.36%)	DCC
Wilson B-factor (Å <sup>2</sup> )	46.2	Xtriage
Anisotropy	0.283	Xtriage
Bulk solvent $k_{sol}$ (e/Å <sup>3</sup> ), $B_{sol}$ (Å <sup>2</sup> )	0.35 , 42.1	EDS
Estimated twinning fraction	No twinning to report.	Xtriage
L-test for twinning	$\langle  L  \rangle = 0.44$ , $\langle L^2 \rangle = 0.27$	Xtriage
Outliers	5 of 28155 reflections (0.018%)	Xtriage
$F_o, F_c$ correlation	0.94	EDS
Total number of atoms	8896	wwPDB-VP
Average B, all atoms (Å <sup>2</sup> )	48.0	wwPDB-VP

Xtriage's analysis on translational NCS is as follows: *The analyses of the Patterson function reveals a significant off-origin peak that is 45.06 % of the origin peak, indicating pseudo translational symmetry. The chance of finding a peak of this or larger height randomly in a structure without pseudo translational symmetry is equal to 1.3945e-04. The detected translational NCS is most likely also responsible for the elevated intensity ratio.*

<sup>1</sup>Intensities estimated from amplitudes.

## 5 Model quality

### 5.1 Standard geometry

Bond lengths and bond angles in the following residue types are not validated in this section: ZN, 28L

The Z score for a bond length (or angle) is the number of standard deviations the observed value is removed from the expected value. A bond length (or angle) with  $|Z| > 5$  is considered an outlier worth inspection. RMSZ is the root-mean-square of all Z scores of the bond lengths (or angles).

Mol	Chain	Bond lengths		Bond angles	
		RMSZ	$\# Z  > 5$	RMSZ	$\# Z  > 5$
1	A	0.45	0/4391	0.65	0/5954
1	B	0.45	0/4383	0.65	0/5943
All	All	0.45	0/8774	0.65	0/11897

There are no bond length outliers.

There are no bond angle outliers.

There are no chirality outliers.

There are no planarity outliers.

### 5.2 Close contacts

In the following table, the Non-H and H(model) columns list the number of non-hydrogen atoms and hydrogen atoms in the chain respectively. The H(added) column lists the number of hydrogens added by MolProbity. The Clashes column lists the number of clashes within the asymmetric unit, and the number in parentheses is this value normalized per 1000 atoms of the molecule in the chain. The Symm-Clashes column gives symmetry related clashes, in the same way as for the Clashes column.

Mol	Chain	Non-H	H(model)	H(added)	Clashes	Symm-Clashes
1	A	4300	0	4317	24	0
1	B	4292	0	4306	31	0
2	A	1	0	0	0	0
2	B	1	0	0	0	0
3	A	36	0	0	0	0
3	B	36	0	0	0	0
4	A	118	0	0	3	0
4	B	112	0	0	4	0
All	All	8896	0	8623	53	0

Clashscore is defined as the number of clashes calculated for the entry per 1000 atoms (including hydrogens) of the entry. The overall clashscore for this entry is 3.

All (53) close contacts within the same asymmetric unit are listed below.

Atom-1	Atom-2	Distance(Å)	Clash(Å)
1:A:425:LEU:HD13	4:A:773:HOH:O	1.82	0.79
1:A:321:VAL:HG21	1:A:365:SER:HB3	1.69	0.74
1:B:527:ASN:HD21	1:B:534:LEU:H	1.35	0.73
1:B:321:VAL:CG2	1:B:365:SER:HB2	2.30	0.62
1:A:412:ILE:HG13	4:A:773:HOH:O	2.00	0.61
1:B:82:LEU:HD12	1:B:249:ALA:HB2	1.84	0.60
1:B:308:LEU:HB3	1:B:311:CYS:SG	2.42	0.59
1:A:200:ARG:HH21	1:A:365:SER:HB2	1.66	0.58
1:A:184:GLN:HB2	4:A:740:HOH:O	2.03	0.57
1:A:308:LEU:HB3	1:A:311:CYS:SG	2.44	0.57
1:A:144:VAL:HB	1:A:394:ARG:HG2	1.85	0.57
1:B:321:VAL:HG23	1:B:365:SER:HB2	1.85	0.57
1:B:144:VAL:HB	1:B:394:ARG:HG2	1.86	0.56
1:B:285:LEU:HA	1:B:558:GLY:HA2	1.88	0.54
1:A:191:TYR:CZ	1:A:193:PHE:HB2	2.43	0.54
1:A:285:LEU:HA	1:A:558:GLY:HA2	1.89	0.53
1:A:130:THR:HG22	1:A:255:SER:OG	2.08	0.53
1:B:191:TYR:CZ	1:B:193:PHE:HB2	2.43	0.53
1:B:340:THR:HG23	1:B:350:PRO:HG3	1.90	0.52
1:B:139:MET:HG2	4:B:798:HOH:O	2.10	0.50
1:B:184:GLN:HE21	1:B:194:GLN:HE22	1.59	0.50
1:B:269:SER:HB3	4:B:798:HOH:O	2.12	0.49
1:B:495:PRO:HG2	1:B:503:ARG:HH12	1.78	0.49
1:A:495:PRO:HG2	1:A:503:ARG:HH12	1.78	0.49
1:B:130:THR:HG22	1:B:255:SER:OG	2.13	0.48
1:A:309:GLN:O	1:A:324:CYS:HB2	2.15	0.47
1:B:264:GLY:HA3	4:B:717:HOH:O	2.14	0.46
1:A:340:THR:HG23	1:A:350:PRO:HG3	1.98	0.46
1:A:47:LEU:HA	1:A:50:LYS:HD2	1.98	0.46
1:A:85:VAL:HG11	1:A:116:VAL:HG13	1.99	0.44
1:A:26:LEU:HD13	1:A:432:ILE:HG12	2.00	0.44
1:B:85:VAL:HG11	1:B:116:VAL:HG13	2.00	0.44
1:B:189:SER:HB2	1:B:203:PHE:CE1	2.53	0.43
1:A:538:PRO:HG3	1:B:270:LYS:HB3	2.01	0.43
1:A:538:PRO:CG	1:B:270:LYS:HB3	2.49	0.43
1:A:200:ARG:NH2	1:A:365:SER:HB2	2.31	0.43
1:A:86:GLU:HG3	1:A:111:LEU:HD13	2.00	0.42
1:B:26:LEU:HD13	1:B:432:ILE:HG12	2.01	0.42
1:B:184:GLN:HB2	4:B:745:HOH:O	2.19	0.42

*Continued on next page...*



*Continued from previous page...*

Atom-1	Atom-2	Distance(Å)	Clash(Å)
1:B:308:LEU:HD13	1:B:335:SER:HB3	2.02	0.42
1:B:277:ARG:CZ	1:B:281:ALA:HB2	2.50	0.42
1:B:17:GLU:HB3	1:B:41:THR:HG22	2.02	0.42
1:A:383:TYR:CE2	1:A:385:THR:HB	2.55	0.41
1:B:189:SER:HB2	1:B:203:PHE:HE1	1.85	0.41
1:B:383:TYR:CE2	1:B:385:THR:HB	2.55	0.41
1:B:30:LEU:O	1:B:494:VAL:HA	2.21	0.41
1:A:82:LEU:HD13	1:A:249:ALA:HB2	2.01	0.41
1:A:78:VAL:HG21	1:A:182:LEU:HD12	2.03	0.41
1:A:30:LEU:O	1:A:494:VAL:HA	2.21	0.40
1:B:78:VAL:HG21	1:B:182:LEU:HD12	2.03	0.40
1:B:230:GLU:O	1:B:234:ARG:HG3	2.21	0.40
1:B:321:VAL:HG23	1:B:365:SER:CB	2.51	0.40
1:B:22:PRO:HG2	1:B:401:ARG:HG3	2.04	0.40

There are no symmetry-related clashes.

## 5.3 Torsion angles

### 5.3.1 Protein backbone ⓘ

In the following table, the Percentiles column shows the percent Ramachandran outliers of the chain as a percentile score with respect to all X-ray entries followed by that with respect to entries of similar resolution. The Analysed column shows the number of residues for which the backbone conformation was analysed, and the total number of residues.

Mol	Chain	Analysed	Favoured	Allowed	Outliers	Percentiles	
1	A	546/570 (96%)	526 (96%)	20 (4%)	0	100	100
1	B	545/570 (96%)	529 (97%)	16 (3%)	0	100	100
All	All	1091/1140 (96%)	1055 (97%)	36 (3%)	0	100	100

There are no Ramachandran outliers to report.

### 5.3.2 Protein sidechains ⓘ

In the following table, the Percentiles column shows the percent sidechain outliers of the chain as a percentile score with respect to all X-ray entries followed by that with respect to entries of similar resolution. The Analysed column shows the number of residues for which the sidechain conformation was analysed, and the total number of residues.

Mol	Chain	Analysed	Rotameric	Outliers	Percentiles	
1	A	473/485 (98%)	452 (96%)	21 (4%)	39	75
1	B	472/485 (97%)	451 (96%)	21 (4%)	39	75
All	All	945/970 (97%)	903 (96%)	42 (4%)	40	75

All (42) residues with a non-rotameric sidechain are listed below:

Mol	Chain	Res	Type
1	A	1	HIS
1	A	31	LEU
1	A	56	ARG
1	A	107	ASP
1	A	148	GLN
1	A	154	ARG
1	A	159	LEU
1	A	202	GLU
1	A	223[A]	CYS
1	A	223[B]	CYS
1	A	282	SER
1	A	288	SER
1	A	303	CYS
1	A	308	LEU
1	A	313	MET
1	A	371	SER
1	A	381	VAL
1	A	451[A]	CYS
1	A	451[B]	CYS
1	A	487	SER
1	A	539	ILE
1	B	31	LEU
1	B	47	LEU
1	B	56	ARG
1	B	82	LEU
1	B	107	ASP
1	B	148	GLN
1	B	154	ARG
1	B	159	LEU
1	B	222	ARG
1	B	282	SER
1	B	288	SER
1	B	303	CYS
1	B	308	LEU
1	B	310	ASP

*Continued on next page...*

*Continued from previous page...*

Mol	Chain	Res	Type
1	B	313	MET
1	B	319	ASP
1	B	371	SER
1	B	451[A]	CYS
1	B	451[B]	CYS
1	B	465	ARG
1	B	532	THR

Some sidechains can be flipped to improve hydrogen bonding and reduce clashes. All (8) such sidechains are listed below:

Mol	Chain	Res	Type
1	A	35	ASN
1	A	231	ASN
1	A	411	ASN
1	A	562	HIS
1	B	184	GLN
1	B	231	ASN
1	B	527	ASN
1	B	562	HIS

### 5.3.3 RNA ⓘ

There are no RNA chains in this entry.

### 5.4 Non-standard residues in protein, DNA, RNA chains ⓘ

There are no non-standard protein/DNA/RNA residues in this entry.

### 5.5 Carbohydrates ⓘ

There are no carbohydrates in this entry.

### 5.6 Ligand geometry ⓘ

Of 4 ligands modelled in this entry, 2 are monoatomic - leaving 2 for Mogul analysis.

In the following table, the Counts columns list the number of bonds (or angles) for which Mogul statistics could be retrieved, the number of bonds (or angles) that are observed in the model and the number of bonds (or angles) that are defined in the chemical component dictionary. The Link

column lists molecule types, if any, to which the group is linked. The Z score for a bond length (or angle) is the number of standard deviations the observed value is removed from the expected value. A bond length (or angle) with  $|Z| > 2$  is considered an outlier worth inspection. RMSZ is the root-mean-square of all Z scores of the bond lengths (or angles).

Mol	Type	Chain	Res	Link	Bond lengths			Bond angles		
					Counts	RMSZ	# Z  > 2	Counts	RMSZ	# Z  > 2
3	28L	A	602	-	39,39,39	1.88	6 (15%)	59,59,59	1.88	11 (18%)
3	28L	B	602	-	39,39,39	1.97	7 (17%)	59,59,59	1.58	8 (13%)

In the following table, the Chirals column lists the number of chiral outliers, the number of chiral centers analysed, the number of these observed in the model and the number defined in the chemical component dictionary. Similar counts are reported in the Torsion and Rings columns. '-' means no outliers of that kind were identified.

Mol	Type	Chain	Res	Link	Chirals	Torsions	Rings
3	28L	A	602	-	-	1/23/36/36	0/4/4/4
3	28L	B	602	-	-	0/23/36/36	0/4/4/4

All (13) bond length outliers are listed below:

Mol	Chain	Res	Type	Atoms	Z	Observed(Å)	Ideal(Å)
3	B	602	28L	C19-C20	-6.81	1.38	1.50
3	B	602	28L	C19-C18	-6.27	1.42	1.49
3	A	602	28L	C19-C20	-6.09	1.39	1.50
3	A	602	28L	C18-C17	5.30	1.38	1.34
3	A	602	28L	C19-C18	-5.06	1.44	1.49
3	A	602	28L	C4-N3	-4.55	1.35	1.43
3	B	602	28L	C18-C17	4.44	1.37	1.34
3	B	602	28L	C24-N23	4.18	1.46	1.37
3	A	602	28L	C24-N23	3.09	1.44	1.37
3	B	602	28L	C4-N3	-3.07	1.38	1.43
3	A	602	28L	S2-N3	-2.40	1.59	1.63
3	B	602	28L	C20-N23	2.33	1.35	1.29
3	B	602	28L	S2-N3	-2.10	1.60	1.63

All (19) bond angle outliers are listed below:

Mol	Chain	Res	Type	Atoms	Z	Observed(°)	Ideal(°)
3	A	602	28L	C22-O21-C20	7.81	122.36	116.04
3	B	602	28L	C22-O21-C20	7.06	121.75	116.04
3	A	602	28L	C7-C4-N3	5.33	131.63	120.07
3	B	602	28L	C7-C4-N3	4.83	130.53	120.07
3	A	602	28L	O21-C20-N23	-4.23	113.13	122.29

*Continued on next page...*

*Continued from previous page...*

Mol	Chain	Res	Type	Atoms	Z	Observed(°)	Ideal(°)
3	A	602	28L	O21-C20-C19	4.15	118.49	111.27
3	A	602	28L	C5-C4-N3	-3.88	111.65	120.07
3	A	602	28L	O36-S2-N3	3.41	114.39	107.14
3	B	602	28L	C5-C4-N3	-3.28	112.96	120.07
3	B	602	28L	C26-C16-C15	-2.61	117.13	118.81
3	B	602	28L	C28-C27-C32	2.60	126.41	121.80
3	A	602	28L	C28-C27-C32	2.43	126.10	121.80
3	A	602	28L	C10-C13-C14	-2.38	119.24	122.25
3	A	602	28L	C26-C16-C15	-2.33	117.31	118.81
3	B	602	28L	C16-C26-C27	2.29	126.53	122.50
3	B	602	28L	C10-C13-C14	-2.17	119.51	122.25
3	A	602	28L	C16-C26-C27	2.11	126.22	122.50
3	A	602	28L	C1-S2-N3	-2.10	104.19	106.76
3	B	602	28L	O36-S2-N3	2.00	111.40	107.14

There are no chirality outliers.

All (1) torsion outliers are listed below:

Mol	Chain	Res	Type	Atoms
3	A	602	28L	C22-O21-C20-N23

There are no ring outliers.

## 5.7 Other polymers ⓘ

There are no such residues in this entry.

## 5.8 Polymer linkage issues

There are no chain breaks in this entry.

## 6 Fit of model and data ⓘ

### 6.1 Protein, DNA and RNA chains ⓘ

In the following table, the column labelled ‘#RSRZ> 2’ contains the number (and percentage) of RSRZ outliers, followed by percent RSRZ outliers for the chain as percentile scores relative to all X-ray entries and entries of similar resolution. The OWAB column contains the minimum, median, 95<sup>th</sup> percentile and maximum values of the occupancy-weighted average B-factor per residue. The column labelled ‘Q< 0.9’ lists the number of (and percentage) of residues with an average occupancy less than 0.9.

Mol	Chain	Analysed	<RSRZ>	#RSRZ>2		OWAB(Å <sup>2</sup> )	Q<0.9
1	A	546/570 (95%)	0.05	20 (3%)	39 39	25, 46, 72, 112	0
1	B	545/570 (95%)	-0.09	11 (2%)	62 63	27, 45, 69, 112	0
All	All	1091/1140 (95%)	-0.02	31 (2%)	50 52	25, 46, 71, 112	0

All (31) RSRZ outliers are listed below:

Mol	Chain	Res	Type	RSRZ
1	A	535	LYS	4.0
1	A	561	TYR	3.9
1	B	47	LEU	3.7
1	A	213	ASN	3.6
1	A	534	LEU	3.5
1	B	535	LYS	3.2
1	B	538	PRO	3.2
1	A	483	ASN	3.1
1	B	534	LEU	2.9
1	A	329	THR	2.9
1	A	532	THR	2.8
1	A	516	GLY	2.8
1	A	514	GLN	2.8
1	A	47	LEU	2.8
1	A	222	ARG	2.7
1	B	560	ILE	2.6
1	B	46	GLY	2.5
1	A	530	VAL	2.5
1	A	205	VAL	2.3
1	A	328	GLY	2.3
1	A	50	LYS	2.3
1	A	487	SER	2.2
1	B	111	LEU	2.1
1	B	16	ALA	2.1

*Continued on next page...*

*Continued from previous page...*

Mol	Chain	Res	Type	RSRZ
1	B	50	LYS	2.1
1	A	119	ILE	2.1
1	A	482	ILE	2.1
1	B	222	ARG	2.0
1	A	110	ASN	2.0
1	B	536	LEU	2.0
1	A	330	GLN	2.0

## 6.2 Non-standard residues in protein, DNA, RNA chains ⓘ

There are no non-standard protein/DNA/RNA residues in this entry.

## 6.3 Carbohydrates ⓘ

There are no carbohydrates in this entry.

## 6.4 Ligands ⓘ

In the following table, the Atoms column lists the number of modelled atoms in the group and the number defined in the chemical component dictionary. LLDF column lists the quality of electron density of the group with respect to its neighbouring residues in protein, DNA or RNA chains. The B-factors column lists the minimum, median, 95<sup>th</sup> percentile and maximum values of B factors of atoms in the group. The column labelled 'Q< 0.9' lists the number of atoms with occupancy less than 0.9.

Mol	Type	Chain	Res	Atoms	RSR	LLDF	B-factors(Å <sup>2</sup> )	Q<0.9
3	28L	B	602	36/36	0.23	2.07	70,74,77,78	0
2	ZN	A	601	1/1	0.23	1.22	93,93,93,93	0
3	28L	A	602	36/36	0.21	0.46	58,65,79,80	0
2	ZN	B	601	1/1	0.06	-5.04	90,90,90,90	0

## 6.5 Other polymers ⓘ

There are no such residues in this entry.