



Full wwPDB X-ray Structure Validation Report

Sep 3, 2014 – 12:30 AM EDT

PDB ID : 4MIK
Title : Crystal Structure of hPNMT in Complex with bisubstrate inhibitor (2R,3R,4S,5S)-2-(6-amino-9H-purin-9-yl)-5-(((2-(((7-nitro-1,2,3,4-tetrahydroisoquinolin-3-yl)methyl)amino)ethyl)thio)methyl)tetrahydrofuran-3,4-diol
Authors : Bart, A.G.; Scott, E.E.
Deposited on : 2013-08-31
Resolution : 1.95 Å(reported)

This is a full wwPDB validation report for a publicly released PDB entry.
We welcome your comments at validation@mail.wwpdb.org
A user guide is available at <http://wwpdb.org/ValidationPDFNotes.html>

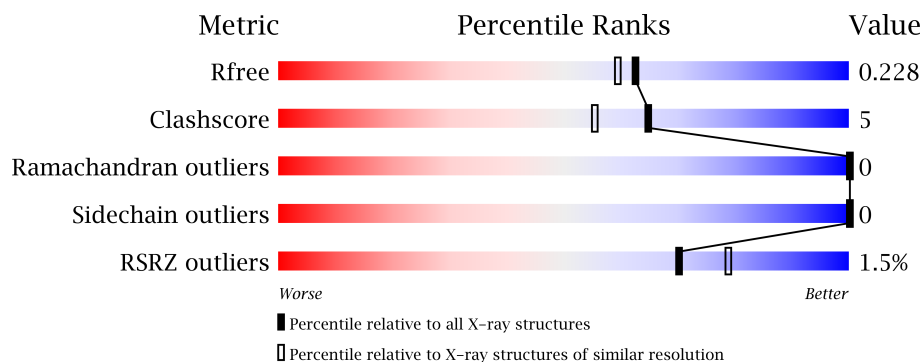
The following versions of software and data (see [references](#)) were used in the production of this report:

MolProbity : 4.02b-467
Mogul : 1.16 November 2013
Xtriage (Phenix) : dev-1439
EDS : stable23489
Percentile statistics : 21963
Refmac : 5.8.0049
CCP4 : 6.3.0 (Settle)
Ideal geometry (proteins) : Engh & Huber (2001)
Ideal geometry (DNA, RNA) : Parkinson et. al. (1996)
Validation Pipeline (wwPDB-VP) : stable23489

1 Overall quality at a glance

The reported resolution of this entry is 1.95 Å.

Percentile scores (ranging between 0-100) for global validation metrics of the entry are shown in the following graphic. The table shows the number of entries on which the scores are based.



Metric	Whole archive (#Entries)	Similar resolution (#Entries, resolution range(Å))
R_{free}	66092	1321 (1.96-1.96)
Clashscore	79885	1488 (1.96-1.96)
Ramachandran outliers	78287	1475 (1.96-1.96)
Sidechain outliers	78261	1475 (1.96-1.96)
RSRZ outliers	66119	1321 (1.96-1.96)

The table below summarises the geometric issues observed across the polymeric chains and their fit to the electron density. The red, orange, yellow and green segments on the lower bar indicate the fraction of residues that contain outliers for ≥ 3 , 2, 1 and 0 types of geometric quality criteria. The upper red bar (where present) indicates the fraction of residues that have poor fit to the electron density.

Mol	Chain	Length	Quality of chain
1	A	289	
1	B	289	

The following table lists non-polymeric compounds that are outliers for geometric or electron-density-fit criteria:

Mol	Type	Chain	Res	Geometry	Electron density
2	JIL	A	301	-	X

2 Entry composition

There are 4 unique types of molecules in this entry. The entry contains 8617 atoms, of which 4125 are hydrogens and 0 are deuterium.

In the tables below, the ZeroOcc column contains the number of atoms modelled with zero occupancy, the AltConf column contains the number of residues with at least one atom in alternate conformation and the Trace column contains the number of residues modelled with at most 2 atoms.

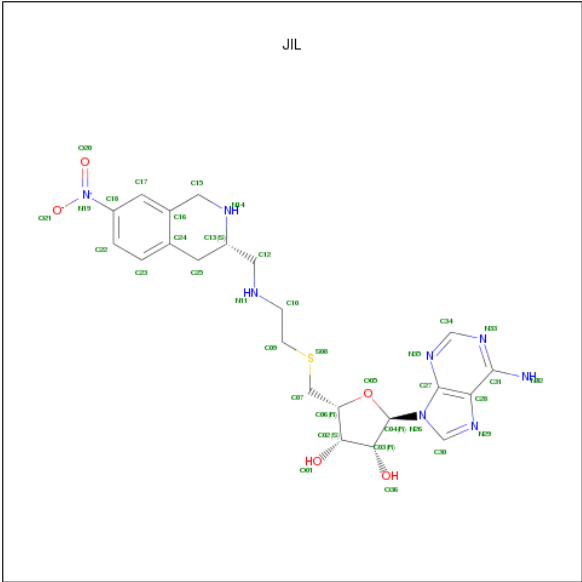
- Molecule 1 is a protein called Phenylethanolamine N-methyltransferase.

Mol	Chain	Residues	Atoms						ZeroOcc	AltConf	Trace
1	A	255	Total	C	H	N	O	S	0	3	0
			4008	1280	1992	358	369	9			
1	B	265	Total	C	H	N	O	S	0	4	0
			4127	1315	2053	369	381	9			

There are 14 discrepancies between the modelled and reference sequences:

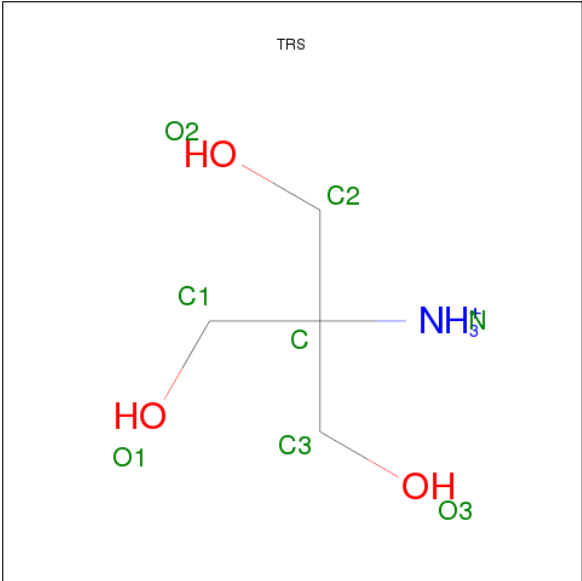
Chain	Residue	Modelled	Actual	Comment	Reference
A	283	GLU	-	EXPRESSION TAG	UNP P11086
A	284	HIS	-	EXPRESSION TAG	UNP P11086
A	285	HIS	-	EXPRESSION TAG	UNP P11086
A	286	HIS	-	EXPRESSION TAG	UNP P11086
A	287	HIS	-	EXPRESSION TAG	UNP P11086
A	288	HIS	-	EXPRESSION TAG	UNP P11086
A	289	HIS	-	EXPRESSION TAG	UNP P11086
B	283	GLU	-	EXPRESSION TAG	UNP P11086
B	284	HIS	-	EXPRESSION TAG	UNP P11086
B	285	HIS	-	EXPRESSION TAG	UNP P11086
B	286	HIS	-	EXPRESSION TAG	UNP P11086
B	287	HIS	-	EXPRESSION TAG	UNP P11086
B	288	HIS	-	EXPRESSION TAG	UNP P11086
B	289	HIS	-	EXPRESSION TAG	UNP P11086

- Molecule 2 is 9-{5-S-[2-({[(3S)-7-NITRO-1,2,3,4-TETRAHYDROISOQUINOLIN-3-YL]METHYL}AMINO)ETHYL]-5-THIO-ALPHA-L-LYXOFURANOSYL}-9H-PURIN-6-AMINE (three-letter code: JIL) (formula: C₂₂H₂₈N₈O₅S).



Mol	Chain	Residues	Atoms						ZeroOcc	AltConf
2	A	1	Total	C	H	N	O	S	0	0
			64	22	28	8	5	1		
2	B	1	Total	C	H	N	O	S	0	0
			64	22	28	8	5	1		

- Molecule 3 is 2-AMINO-2-HYDROXYMETHYL-PROPANE-1,3-DIOL (three-letter code: TRS) (formula: C₄H₁₂NO₃).



Mol	Chain	Residues	Atoms					ZeroOcc	AltConf
3	A	1	Total	C	H	N	O	0	0
			20	4	12	1	3		

Continued on next page...

Continued from previous page...

Mol	Chain	Residues	Atoms					ZeroOcc	AltConf
3	B	1	Total	C	H	N	O	0	0
			20	4	12	1	3		

- Molecule 4 is water.

Mol	Chain	Residues	Atoms		ZeroOcc	AltConf
4	A	147	Total	O	0	0
			147	147		
4	B	167	Total	O	0	0
			167	167		

3 Residue-property plots

These plots are drawn for all protein, RNA and DNA chains in the entry. The first graphic for a chain summarises the proportions of errors displayed in the second graphic. The second graphic shows the sequence view annotated by issues in geometry and electron density. Residues are color-coded according to the number of geometric quality criteria for which they contain at least one outlier: green = 0, yellow = 1, orange = 2 and red = 3 or more. A red dot above a residue indicates a poor fit to the electron density ($RSRZ > 2$). Stretches of 2 or more consecutive residues without any outlier are shown as a green connector. Residues present in the sample, but not in the model, are shown in grey.

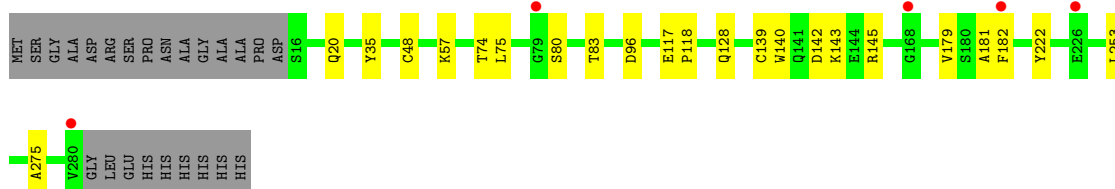
- Molecule 1: Phenylethanolamine N-methyltransferase

Chain A: 



- Molecule 1: Phenylethanolamine N-methyltransferase

Chain B: 



4 Data and refinement statistics

Property	Value	Source
Space group	P 43 21 2	Depositor
Cell constants a, b, c, α , β , γ	94.66Å 94.66Å 188.46Å 90.00° 90.00° 90.00°	Depositor
Resolution (Å)	38.62 – 1.95 38.62 – 1.95	Depositor EDS
% Data completeness (in resolution range)	99.2 (38.62-1.95) 90.7 (38.62-1.95)	Depositor EDS
R_{merge}	(Not available)	Depositor
R_{sym}	(Not available)	Depositor
$\langle I/\sigma(I) \rangle$ ¹	1.75 (at 1.95Å)	Xtriage
Refinement program	PHENIX (phenix.refine: dev_1377)	Depositor
R, R_{free}	0.182 , 0.230 0.178 , 0.228	Depositor DCC
R_{free} test set	2915 reflections (5.10%)	DCC
Wilson B-factor (Å ²)	38.5	Xtriage
Anisotropy	0.456	Xtriage
Bulk solvent k_{sol} (e/Å ³), B_{sol} (Å ²)	0.37 , 40.6	EDS
Estimated twinning fraction	No twinning to report.	Xtriage
L-test for twinning	$\langle L \rangle = 0.49$, $\langle L^2 \rangle = 0.32$	Xtriage
Outliers	3 of 62773 reflections (0.005%)	Xtriage
F_o, F_c correlation	0.96	EDS
Total number of atoms	8617	wwPDB-VP
Average B, all atoms (Å ²)	51.0	wwPDB-VP

Xtriage's analysis on translational NCS is as follows: *The largest off-origin peak in the Patterson function is 3.63% of the height of the origin peak. No significant pseudotranslation is detected.*

¹Intensities estimated from amplitudes.

5 Model quality

5.1 Standard geometry

Bond lengths and bond angles in the following residue types are not validated in this section: JIL, TRS

The Z score for a bond length (or angle) is the number of standard deviations the observed value is removed from the expected value. A bond length (or angle) with $|Z| > 5$ is considered an outlier worth inspection. RMSZ is the root-mean-square of all Z scores of the bond lengths (or angles).

Mol	Chain	Bond lengths		Bond angles	
		RMSZ	$\# Z > 5$	RMSZ	$\# Z > 5$
1	A	0.58	0/2082	0.65	0/2833
1	B	0.68	1/2150 (0.0%)	0.70	2/2926 (0.1%)
All	All	0.63	1/4232 (0.0%)	0.67	2/5759 (0.0%)

All (1) bond length outliers are listed below:

Mol	Chain	Res	Type	Atoms	Z	Observed(Å)	Ideal(Å)
1	B	118	PRO	N-CD	5.20	1.55	1.47

All (2) bond angle outliers are listed below:

Mol	Chain	Res	Type	Atoms	Z	Observed(°)	Ideal(°)
1	B	117	GLU	C-N-CD	5.74	140.44	128.40
1	B	143	LYS	CD-CE-NZ	-5.11	99.95	111.70

There are no chirality outliers.

There are no planarity outliers.

5.2 Close contacts

In the following table, the Non-H and H(model) columns list the number of non-hydrogen atoms and hydrogen atoms in the chain respectively. The H(added) column lists the number of hydrogens added by MolProbity. The Clashes column lists the number of clashes within the asymmetric unit, and the number in parentheses is this value normalized per 1000 atoms of the molecule in the chain. The Symm-Clashes column gives symmetry related clashes, in the same way as for the Clashes column.

Mol	Chain	Non-H	H(model)	H(added)	Clashes	Symm-Clashes
1	A	2016	1992	0	11	0

Continued on next page...

Continued from previous page...

Mol	Chain	Non-H	H(model)	H(added)	Clashes	Symm-Clashes
1	B	2074	2053	0	24	0
2	A	36	28	0	12	0
2	B	36	28	0	12	0
3	A	8	12	0	7	0
3	B	8	12	0	8	0
4	A	147	0	0	1	0
4	B	167	0	0	2	0
All	All	4492	4125	0	43	0

Clashscore is defined as the number of clashes calculated for the entry per 1000 atoms (including hydrogens) of the entry. The overall clashscore for this entry is 5.

All (43) close contacts within the same asymmetric unit are listed below.

Atom-1	Atom-2	Distance(Å)	Clash(Å)
2:A:301:JIL:S08	3:A:302:TRS:N	2.28	1.06
3:B:302:TRS:O3	3:B:302:TRS:O1	1.88	0.84
1:A:222:TYR:OH	2:A:301:JIL:H091	1.92	0.69
1:A:139:CYS:SG	1:B:48:CYS:HA	2.33	0.68
1:A:181:ALA:O	3:A:302:TRS:H31	1.95	0.66
1:B:35:TYR:OH	2:B:301:JIL:H092	1.96	0.65
1:A:48:CYS:HG	1:B:139:CYS:HG	0.67	0.64
1:B:222:TYR:CE1	2:B:301:JIL:H121	2.32	0.63
1:B:57:LYS:NZ	2:B:301:JIL:O20	2.36	0.56
1:A:182:PHE:O	2:A:301:JIL:H102	2.07	0.54
1:B:142:ASP:OD1	1:B:145:ARG:NH2	2.36	0.54
1:A:35:TYR:CE1	2:A:301:JIL:H092	2.42	0.54
1:B:20:GLN:NE2	4:B:514:HOH:O	2.41	0.53
2:A:301:JIL:C07	3:A:302:TRS:N	2.72	0.53
1:B:83:THR:CG2	3:B:302:TRS:H32	2.39	0.52
1:B:35:TYR:OH	2:B:301:JIL:H231	2.10	0.52
2:B:301:JIL:S08	3:B:302:TRS:N	2.84	0.51
1:B:80:SER:O	3:B:302:TRS:H21	2.10	0.51
1:B:83:THR:OG1	3:B:302:TRS:H32	2.10	0.51
1:B:181:ALA:O	3:B:302:TRS:H11	2.10	0.50
2:A:301:JIL:H072	3:A:302:TRS:HN2	1.76	0.50
1:B:182:PHE:O	2:B:301:JIL:H091	2.12	0.50
1:B:80:SER:O	3:B:302:TRS:C2	2.61	0.48
2:A:301:JIL:C07	3:A:302:TRS:HN2	2.27	0.48
1:A:48:CYS:CB	1:B:139:CYS:HG	2.26	0.47
1:B:222:TYR:CZ	2:B:301:JIL:H101	2.50	0.47
1:B:222:TYR:CG	2:B:301:JIL:H131	2.50	0.47
1:A:222:TYR:CE1	2:A:301:JIL:N11	2.83	0.46

Continued on next page...

Continued from previous page...

Atom-1	Atom-2	Distance(Å)	Clash(Å)
2:B:301:JIL:C10	2:B:301:JIL:H251	2.46	0.46
1:A:181:ALA:O	3:A:302:TRS:O1	2.32	0.46
1:B:83:THR:HG21	3:B:302:TRS:H32	1.97	0.46
1:B:182:PHE:HB3	2:B:301:JIL:H111	1.81	0.45
1:A:75:LEU:HD23	1:A:76:ILE:N	2.32	0.44
1:A:222:TYR:CZ	2:A:301:JIL:N11	2.86	0.43
1:B:75:LEU:HD11	1:B:179:VAL:HG23	2.00	0.43
2:B:301:JIL:H122	4:B:510:HOH:O	2.19	0.43
1:B:74:THR:HG22	1:B:96:ASP:HB3	2.01	0.43
2:A:301:JIL:H252	2:A:301:JIL:H101	2.01	0.42
1:B:222:TYR:CD1	2:B:301:JIL:H121	2.54	0.42
1:B:128[A]:GLN:HG2	1:B:140:TRP:CD1	2.55	0.42
1:B:253:LEU:HD13	1:B:275:ALA:HB2	2.03	0.41
2:A:301:JIL:H152	4:A:402:HOH:O	2.20	0.40
2:A:301:JIL:H072	3:A:302:TRS:N	2.36	0.40

There are no symmetry-related clashes.

5.3 Torsion angles

5.3.1 Protein backbone ⓘ

In the following table, the Percentiles column shows the percent Ramachandran outliers of the chain as a percentile score with respect to all X-ray entries followed by that with respect to entries of similar resolution.

The Analysed column shows the number of residues for which the backbone conformation was analysed, and the total number of residues.

Mol	Chain	Analysed	Favoured	Allowed	Outliers	Percentiles	
1	A	256/289 (89%)	253 (99%)	3 (1%)	0	100	100
1	B	267/289 (92%)	264 (99%)	3 (1%)	0	100	100
All	All	523/578 (90%)	517 (99%)	6 (1%)	0	100	100

There are no Ramachandran outliers to report.

5.3.2 Protein sidechains ⓘ

In the following table, the Percentiles column shows the percent sidechain outliers of the chain as a percentile score with respect to all X-ray entries followed by that with respect to entries of

similar resolution. The Analysed column shows the number of residues for which the sidechain conformation was analysed, and the total number of residues.

Mol	Chain	Analysed	Rotameric	Outliers	Percentiles	
1	A	214/233 (92%)	214 (100%)	0	100	100
1	B	220/233 (94%)	220 (100%)	0	100	100
All	All	434/466 (93%)	434 (100%)	0	100	100

There are no protein residues with a non-rotameric sidechain to report.

Some sidechains can be flipped to improve hydrogen bonding and reduce clashes. There are no such sidechains identified.

5.3.3 RNA ⓘ

There are no RNA chains in this entry.

5.4 Non-standard residues in protein, DNA, RNA chains ⓘ

There are no non-standard protein/DNA/RNA residues in this entry.

5.5 Carbohydrates ⓘ

There are no carbohydrates in this entry.

5.6 Ligand geometry ⓘ

4 ligands are modelled in this entry.

In the following table, the Counts columns list the number of bonds (or angles) for which Mogul statistics could be retrieved, the number of bonds (or angles) that are observed in the model and the number of bonds (or angles) that are defined in the chemical component dictionary. The Link column lists molecule types, if any, to which the group is linked. The Z score for a bond length (or angle) is the number of standard deviations the observed value is removed from the expected value. A bond length (or angle) with $|Z| > 2$ is considered an outlier worth inspection. RMSZ is the root-mean-square of all Z scores of the bond lengths (or angles).

Mol	Type	Chain	Res	Link	Bond lengths			Bond angles		
					Counts	RMSZ	$\# Z > 2$	Counts	RMSZ	$\# Z > 2$
2	JIL	A	301	-	40,40,40	2.55	13 (32%)	57,57,57	2.91	27 (47%)
3	TRS	A	302	-	7,7,7	1.88	3 (42%)	9,9,9	2.97	5 (55%)
2	JIL	B	301	-	40,40,40	2.50	12 (30%)	57,57,57	2.91	25 (43%)

Mol	Type	Chain	Res	Link	Bond lengths			Bond angles		
					Counts	RMSZ	# Z > 2	Counts	RMSZ	# Z > 2
3	TRS	B	302	-	7,7,7	2.43	3 (42%)	9,9,9	4.81	7 (77%)

In the following table, the Chirals column lists the number of chiral outliers, the number of chiral centers analysed, the number of these observed in the model and the number defined in the chemical component dictionary. Similar counts are reported in the Torsion and Rings columns. '-' means no outliers of that kind were identified.

Mol	Type	Chain	Res	Link	Chirals	Torsions	Rings
2	JIL	A	301	-	-	0/17/42/42	0/5/5/5
3	TRS	A	302	-	-	0/9/9/9	0/0/0/0
2	JIL	B	301	-	-	0/17/42/42	0/5/5/5
3	TRS	B	302	-	-	0/9/9/9	0/0/0/0

All (31) bond length outliers are listed below:

Mol	Chain	Res	Type	Atoms	Z	Observed(Å)	Ideal(Å)
2	B	301	JIL	O20-N19	10.43	1.44	1.22
2	A	301	JIL	O20-N19	9.56	1.42	1.22
2	A	301	JIL	C12-N11	-5.54	1.38	1.47
2	A	301	JIL	C23-C24	4.49	1.47	1.39
2	A	301	JIL	C25-C24	4.24	1.58	1.51
3	B	302	TRS	C3-C	-4.08	1.44	1.52
2	B	301	JIL	C12-N11	-4.07	1.40	1.47
2	B	301	JIL	C25-C24	3.95	1.58	1.51
2	B	301	JIL	C31-N32	3.90	1.47	1.34
3	B	302	TRS	C2-C	-3.84	1.45	1.52
2	A	301	JIL	C31-N32	3.65	1.46	1.34
2	B	301	JIL	C15-N14	-3.63	1.42	1.46
2	A	301	JIL	C13-N14	-3.53	1.40	1.47
2	B	301	JIL	C13-N14	-3.46	1.40	1.47
2	B	301	JIL	C23-C24	3.34	1.45	1.39
2	A	301	JIL	C15-N14	-3.25	1.42	1.46
2	A	301	JIL	C25-C13	3.16	1.59	1.54
3	A	302	TRS	C-N	-3.15	1.46	1.50
2	B	301	JIL	C25-C13	3.12	1.59	1.54
3	A	302	TRS	C2-C	-2.76	1.47	1.52
2	B	301	JIL	C24-C16	-2.54	1.35	1.40
2	A	301	JIL	C30-N29	2.52	1.39	1.34
2	A	301	JIL	C24-C16	-2.52	1.35	1.40
2	A	301	JIL	C03-C04	-2.51	1.49	1.53
2	B	301	JIL	C30-N29	2.44	1.39	1.34
2	B	301	JIL	O05-C04	2.19	1.44	1.41

Continued on next page...

Continued from previous page...

Mol	Chain	Res	Type	Atoms	Z	Observed(Å)	Ideal(Å)
2	A	301	JIL	O05-C04	2.15	1.43	1.41
3	A	302	TRS	C1-C	-2.14	1.48	1.52
2	B	301	JIL	C30-N26	-2.14	1.33	1.36
3	B	302	TRS	O1-C1	-2.11	1.35	1.42
2	A	301	JIL	C09-S08	-2.07	1.73	1.81

All (64) bond angle outliers are listed below:

Mol	Chain	Res	Type	Atoms	Z	Observed(°)	Ideal(°)
2	B	301	JIL	N35-C34-N33	-9.79	120.28	128.89
2	A	301	JIL	N35-C34-N33	-8.75	121.19	128.89
2	A	301	JIL	C04-N26-C27	-7.70	113.33	126.64
3	B	302	TRS	O3-C3-C	-7.63	95.81	111.28
3	B	302	TRS	C1-C-N	7.20	121.14	108.10
2	B	301	JIL	C28-C27-N35	-7.10	119.05	125.98
2	B	301	JIL	C04-N26-C27	-6.86	114.79	126.64
2	A	301	JIL	C28-C27-N35	-6.52	119.62	125.98
3	A	302	TRS	O2-C2-C	-5.93	99.26	111.28
2	B	301	JIL	N35-C27-N26	5.85	135.42	125.39
2	A	301	JIL	N35-C27-N26	5.79	135.32	125.39
2	A	301	JIL	C30-N26-C27	5.51	111.43	106.96
3	B	302	TRS	O2-C2-C	-5.05	101.04	111.28
2	B	301	JIL	C30-N26-C27	5.01	111.03	106.96
3	B	302	TRS	C2-C-C1	-4.99	99.99	110.78
2	A	301	JIL	C30-N26-C04	4.77	135.12	126.15
2	B	301	JIL	C06-O05-C04	-4.53	104.74	109.72
2	B	301	JIL	C16-C15-N14	-4.44	104.10	113.18
3	A	302	TRS	C3-C-C2	-4.42	101.23	110.78
2	B	301	JIL	C30-N26-C04	4.25	134.15	126.15
2	B	301	JIL	C03-C02-C06	-4.23	94.20	102.64
2	A	301	JIL	C12-C13-C25	-4.20	105.29	112.29
3	B	302	TRS	C3-C-C1	-4.08	101.95	110.78
2	A	301	JIL	O20-N19-C18	-4.02	115.69	118.62
2	A	301	JIL	C07-S08-C09	3.84	113.89	102.45
2	A	301	JIL	C22-C18-N19	-3.82	116.73	119.56
2	B	301	JIL	O01-C02-C06	3.66	121.86	111.07
3	B	302	TRS	C3-C-C2	3.48	118.31	110.78
3	B	302	TRS	O1-C1-C	3.47	118.32	111.28
2	B	301	JIL	O05-C04-N26	3.41	115.53	108.10
2	A	301	JIL	C03-C04-N26	-3.31	104.32	113.35
2	A	301	JIL	C15-N14-C13	3.29	116.85	111.14
2	B	301	JIL	C07-C06-C02	3.19	123.24	114.98

Continued on next page...

Continued from previous page...

Mol	Chain	Res	Type	Atoms	Z	Observed(°)	Ideal(°)
3	A	302	TRS	C3-C-N	3.15	113.81	108.10
2	B	301	JIL	C23-C24-C16	3.04	122.44	118.96
2	B	301	JIL	C22-C23-C24	-3.01	117.25	121.40
2	A	301	JIL	C16-C15-N14	-2.97	107.10	113.18
2	A	301	JIL	C34-N33-C31	2.96	124.02	118.76
2	A	301	JIL	O05-C04-N26	2.95	114.53	108.10
2	A	301	JIL	C22-C18-C17	2.94	124.11	120.04
2	A	301	JIL	C22-C23-C24	-2.93	117.36	121.40
3	A	302	TRS	O3-C3-C	-2.92	105.35	111.28
2	A	301	JIL	C02-C03-C04	2.91	105.48	100.92
2	A	301	JIL	C23-C24-C16	2.91	122.29	118.96
2	B	301	JIL	C22-C18-N19	-2.86	117.44	119.56
2	B	301	JIL	C34-N35-C27	2.76	121.22	113.27
2	B	301	JIL	C22-C18-C17	2.76	123.86	120.04
2	B	301	JIL	C03-C04-N26	-2.74	105.89	113.35
2	A	301	JIL	C25-C13-N14	2.68	113.36	108.62
2	B	301	JIL	C34-N33-C31	2.67	123.52	118.76
2	A	301	JIL	O01-C02-C06	2.67	118.92	111.07
2	B	301	JIL	C15-N14-C13	2.63	115.69	111.14
2	B	301	JIL	C18-C17-C16	-2.56	116.74	119.54
2	A	301	JIL	C34-N35-C27	2.46	120.35	113.27
2	A	301	JIL	C03-C02-C06	-2.38	97.88	102.64
2	A	301	JIL	C18-C17-C16	-2.27	117.05	119.54
2	A	301	JIL	C12-C13-N14	-2.19	105.24	110.38
2	A	301	JIL	O21-N19-C18	2.15	118.87	114.58
2	B	301	JIL	C27-C28-N29	-2.14	107.34	109.41
2	B	301	JIL	C24-C25-C13	-2.10	110.05	112.52
2	B	301	JIL	C13-C12-N11	2.08	115.23	111.54
3	A	302	TRS	O1-C1-C	-2.06	107.11	111.28
2	A	301	JIL	N29-C30-N26	-2.04	107.57	112.20
2	B	301	JIL	N29-C30-N26	-2.03	107.60	112.20

There are no chirality outliers.

There are no torsion outliers.

There are no ring outliers.

5.7 Other polymers ⓘ

There are no such residues in this entry.

5.8 Polymer linkage issues

There are no chain breaks in this entry.

6 Fit of model and data ⓘ

6.1 Protein, DNA and RNA chains ⓘ

In the following table, the column labelled ‘#RSRZ> 2’ contains the number (and percentage) of RSRZ outliers, followed by percent RSRZ outliers for the chain as percentile scores relative to all X-ray entries and entries of similar resolution. The OWAB column contains the minimum, median, 95th percentile and maximum values of the occupancy-weighted average B-factor per residue. The column labelled ‘Q< 0.9’ lists the number of (and percentage) of residues with an average occupancy less than 0.9.

Mol	Chain	Analysed	<RSRZ>	#RSRZ>2	OWAB(Å ²)	Q<0.9
1	A	255/289 (88%)	-0.02	3 (1%) 75 83	32, 46, 69, 93	0
1	B	265/289 (91%)	-0.02	5 (1%) 64 72	32, 41, 60, 91	1 (0%)
All	All	520/578 (89%)	-0.02	8 (1%) 70 79	32, 43, 67, 93	1 (0%)

All (8) RSRZ outliers are listed below:

Mol	Chain	Res	Type	RSRZ
1	B	226	GLU	4.1
1	A	118	PRO	3.2
1	A	280	VAL	2.8
1	B	79	GLY	2.4
1	B	168	GLY	2.4
1	A	167	ALA	2.1
1	B	280	VAL	2.1
1	B	182	PHE	2.0

6.2 Non-standard residues in protein, DNA, RNA chains ⓘ

There are no non-standard protein/DNA/RNA residues in this entry.

6.3 Carbohydrates ⓘ

There are no carbohydrates in this entry.

6.4 Ligands ⓘ

In the following table, the Atoms column lists the number of modelled atoms in the group and the number defined in the chemical component dictionary. LLDF column lists the quality of electron density of the group with respect to its neighbouring residues in protein, DNA or RNA chains.

The B-factors column lists the minimum, median, 95th percentile and maximum values of B factors of atoms in the group. The column labelled 'Q< 0.9' lists the number of atoms with occupancy less than 0.9.

Mol	Type	Chain	Res	Atoms	RSR	LLDF	B-factors(Å ²)	Q<0.9
2	JIL	A	301	36/36	0.17	2.14	36,62,261,335	0
3	TRS	A	302	8/8	0.19	1.86	37,58,77,77	0
2	JIL	B	301	36/36	0.18	1.45	33,53,111,226	0
3	TRS	B	302	8/8	0.17	0.46	31,45,79,79	0

6.5 Other polymers ⓘ

There are no such residues in this entry.