



Full wwPDB X-ray Structure Validation Report

Mar 1, 2014 – 04:10 AM GMT

PDB ID : 1MJA
Title : Crystal structure of yeast Esa1 histone acetyltransferase domain complexed with acetyl coenzyme A
Authors : Yan, Y.; Harper, S.; Speicher, D.; Marmorstein, R.
Deposited on : 2002-08-27
Resolution : 2.26 Å(reported)

This is a full wwPDB validation report for a publicly released PDB entry.
We welcome your comments at validation@mail.wwpdb.org
A user guide is available at <http://wwpdb.org/ValidationPDFNotes.html>

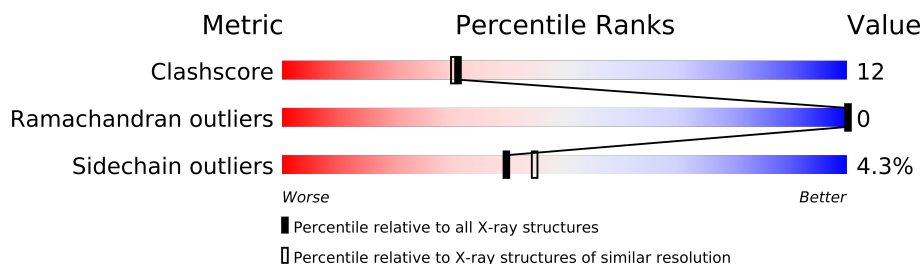
The following versions of software and data (see [references](#)) were used in the production of this report:

MolProbity : 4.02b-467
Mogul : 1.15 2013
Xtriage (Phenix) : **NOT EXECUTED**
EDS : **NOT EXECUTED**
Percentile statistics : 21963
Ideal geometry (proteins) : Engh & Huber (2001)
Ideal geometry (DNA, RNA) : Parkinson et. al. (1996)
Validation Pipeline (wwPDB-VP) : stable22683

1 Overall quality at a glance

The reported resolution of this entry is 2.26 Å.


Percentile scores (ranging between 0-100) for global validation metrics of the entry are shown in the following graphic. The table shows the number of entries on which the scores are based.



Metric	Whole archive (#Entries)	Similar resolution (#Entries, resolution range(Å))
Clashscore	79885	1326 (2.28-2.24)
Ramachandran outliers	78287	1291 (2.28-2.24)
Sidechain outliers	78261	1291 (2.28-2.24)

The table below summarises the geometric issues observed across the polymeric chains and their fit to the electron density. The red, orange, yellow and green segments on the lower bar indicate the fraction of residues that contain outliers for ≥ 3 , 2, 1 and 0 types of geometric quality criteria. The upper red bar (where present) indicates the fraction of residues that have poor fit to the electron density.

Note EDS was not executed.

Mol	Chain	Length	Quality of chain
1	A	278	

2 Entry composition i

There are 3 unique types of molecules in this entry. The entry contains 2491 atoms, of which 0 are hydrogen and 0 are deuterium.

In the tables below, the ZeroOcc column contains the number of atoms modelled with zero occupancy, the AltConf column contains the number of residues with at least one atom in alternate conformation and the Trace column contains the number of residues modelled with at most 2 atoms.

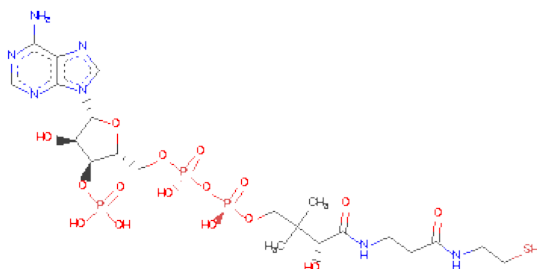
- Molecule 1 is a protein called Esa1 protein.

Mol	Chain	Residues	Atoms					ZeroOcc	AltConf	Trace
			Total	C	N	O	S			
1	A	273	2314	1495	390	419	10	0	0	0

There are 3 discrepancies between the modelled and reference sequences:

Chain	Residue	Modelled	Actual	Comment	Reference
A	158	MET	-	INSERTION	UNP Q08649
A	159	LYS	-	INSERTION	UNP Q08649
A	304	SCY	CYS	MODIFIED RESIDUE	UNP Q08649

- Molecule 2 is COENZYME A (three-letter code: COA) (formula: $C_{21}H_{36}N_7O_{16}P_3S$).



Mol	Chain	Residues	Atoms						ZeroOcc	AltConf
			Total	C	N	O	P	S		
2	A	1	48	21	7	16	3	1	0	0

- Molecule 3 is water.

Mol	Chain	Residues	Atoms		ZeroOcc	AltConf
3	A	129	Total 129	O 129	0	0

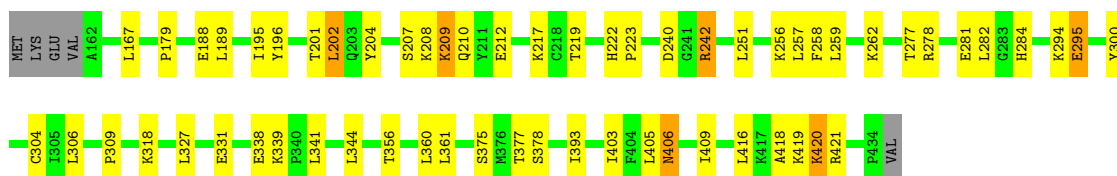
3 Residue-property plots

These plots are drawn for all protein, RNA and DNA chains in the entry. The first graphic for a chain summarises the proportions of errors displayed in the second graphic. The second graphic shows the sequence view annotated by issues in geometry and electron density. Residues are color-coded according to the number of geometric quality criteria for which they contain at least one outlier: green = 0, yellow = 1, orange = 2 and red = 3 or more. A red dot above a residue indicates a poor fit to the electron density ($\text{RSRZ} > 2$). Stretches of 2 or more consecutive residues without any outlier are shown as a green connector. Residues present in the sample, but not in the model, are shown in grey.

Note EDS was not executed.

- Molecule 1: Esa1 protein

Chain A:



4 Data and refinement statistics

Xtriage (Phenix) and EDS were not executed - this section will therefore be incomplete.

Property	Value	Source
Space group	I 41 3 2	Depositor
Cell constants a, b, c, α , β , γ	181.27Å 181.27Å 181.27Å 90.00° 90.00° 90.00°	Depositor
Resolution (Å)	20.00 – 2.26	Depositor
% Data completeness (in resolution range)	99.9 (20.00-2.26)	Depositor
R_{merge}	0.05	Depositor
R_{sym}	0.05	Depositor
Refinement program	CNS	Depositor
R, R_{free}	0.213 , 0.224	Depositor
Estimated twinning fraction	No twinning to report.	Xtriage
Total number of atoms	2491	wwPDB-VP
Average B, all atoms (Å ²)	30.0	wwPDB-VP

5 Model quality

5.1 Standard geometry

Bond lengths and bond angles in the following residue types are not validated in this section: COA, SCY

The Z score for a bond length (or angle) is the number of standard deviations the observed value is removed from the expected value. A bond length (or angle) with $|Z| > 5$ is considered an outlier worth inspection. RMSZ is the root-mean-square of all Z scores of the bond lengths (or angles).

Mol	Chain	Bond lengths		Bond angles	
		RMSZ	$\# Z > 5$	RMSZ	$\# Z > 5$
1	A	0.35	0/2364	0.59	0/3191

There are no bond length outliers.

There are no bond angle outliers.

There are no chirality outliers.

There are no planarity outliers.

5.2 Close contacts

In the following table, the Non-H and H(model) columns list the number of non-hydrogen atoms and hydrogen atoms in the chain respectively. The H(added) column lists the number of hydrogens added by MolProbity. The Clashes column lists the number of clashes within the asymmetric unit, and the number in parentheses is this value normalized per 1000 atoms of the molecule in the chain. The Symm-Clashes column gives symmetry related clashes, in the same way as for the Clashes column.

Mol	Chain	Non-H	H(model)	H(added)	Clashes	Symm-Clashes
1	A	2314	0	2301	55	0
2	A	48	0	32	8	0
3	A	129	0	0	4	0
All	All	2491	0	2333	55	0

Clashscore is defined as the number of clashes calculated for the entry per 1000 atoms (including hydrogens) of the entry. The overall clashscore for this entry is 12.

All (55) close contacts within the same asymmetric unit are listed below.

Atom-1	Atom-2	Distance(Å)	Clash(Å)
1:A:304:SCY:CE	2:A:500:COA:H22	1.83	1.08

Continued on next page...

Continued from previous page...

Atom-1	Atom-2	Distance(Å)	Clash(Å)
1:A:304:SCY:HE2	2:A:500:COA:H22	1.33	1.04
1:A:295:GLU:HA	1:A:295:GLU:OE2	1.74	0.87
1:A:406:ASN:ND2	1:A:409:ILE:H	1.75	0.85
1:A:304:SCY:CE	2:A:500:COA:C2P	2.56	0.82
1:A:406:ASN:ND2	1:A:409:ILE:HG12	2.03	0.73
1:A:208:LYS:O	1:A:212:GLU:HG2	1.89	0.72
1:A:406:ASN:C	1:A:406:ASN:HD22	1.93	0.71
1:A:242:ARG:HG2	1:A:294:LYS:HZ1	1.61	0.66
1:A:318:LYS:HG2	3:A:577:HOH:O	1.96	0.65
1:A:406:ASN:HD21	1:A:409:ILE:H	1.46	0.61
1:A:393:ILE:O	1:A:403:ILE:HA	2.00	0.61
1:A:405:LEU:HD12	1:A:409:ILE:HB	1.83	0.60
1:A:295:GLU:CA	1:A:295:GLU:OE2	2.48	0.60
1:A:242:ARG:HG2	1:A:294:LYS:NZ	2.15	0.60
1:A:240:ASP:OD2	1:A:242:ARG:CG	2.50	0.60
1:A:421:ARG:NH2	2:A:500:COA:H2B	2.17	0.59
1:A:356:THR:O	1:A:360:LEU:HD23	2.02	0.58
1:A:421:ARG:HH22	2:A:500:COA:H2B	1.68	0.58
1:A:258:PHE:CE2	1:A:309:PRO:HG2	2.41	0.56
1:A:304:SCY:HE3	2:A:500:COA:H22	1.80	0.56
1:A:361:LEU:HD21	1:A:403:ILE:HG13	1.88	0.56
1:A:240:ASP:OD2	1:A:242:ARG:HG3	2.06	0.55
1:A:277:THR:OG1	1:A:284:HIS:HD2	1.90	0.55
1:A:327:LEU:O	1:A:331:GLU:HG3	2.07	0.54
1:A:281:GLU:HG2	1:A:282:LEU:CD1	2.38	0.54
1:A:259:LEU:HD22	1:A:304:SCY:HE3	1.88	0.54
1:A:419:LYS:C	1:A:420:LYS:HD3	2.27	0.54
1:A:222:HIS:HD2	1:A:223:PRO:O	1.90	0.53
1:A:406:ASN:HD21	1:A:409:ILE:HG12	1.71	0.52
1:A:240:ASP:OD2	1:A:242:ARG:HG2	2.10	0.51
1:A:259:LEU:HD11	1:A:304:SCY:SG	2.52	0.50
1:A:217:LYS:HB2	1:A:217:LYS:NZ	2.27	0.50
1:A:188:GLU:HG3	1:A:189:LEU:N	2.27	0.49
1:A:304:SCY:HE3	2:A:500:COA:C2P	2.36	0.48
1:A:209:LYS:NZ	1:A:209:LYS:H	2.11	0.48
1:A:262:LYS:NZ	3:A:629:HOH:O	2.47	0.47
1:A:406:ASN:C	1:A:406:ASN:ND2	2.65	0.47
1:A:207:SER:OG	1:A:210:GLN:HB2	2.15	0.47
1:A:281:GLU:HG2	1:A:282:LEU:HD12	1.95	0.47
1:A:406:ASN:HD22	1:A:409:ILE:H	1.57	0.46
1:A:418:ALA:O	1:A:420:LYS:HD3	2.16	0.46
1:A:209:LYS:HZ2	1:A:209:LYS:H	1.62	0.46

Continued on next page...

Continued from previous page...

Atom-1	Atom-2	Distance(Å)	Clash(Å)
1:A:300:TYR:CE1	1:A:338:GLU:HG3	2.51	0.46
1:A:339:LYS:HD3	1:A:341:LEU:CD1	2.46	0.46
1:A:375:SER:HB2	3:A:606:HOH:O	2.15	0.45
1:A:259:LEU:CD2	1:A:304:SCY:HE3	2.47	0.45
1:A:167:LEU:HD11	1:A:195:ILE:HG12	1.99	0.44
1:A:196:TYR:O	1:A:204:TYR:HA	2.18	0.44
1:A:201:THR:O	1:A:202:LEU:HB2	2.18	0.43
1:A:256:LYS:HE3	3:A:608:HOH:O	2.18	0.43
1:A:258:PHE:CZ	1:A:309:PRO:HG2	2.54	0.42
1:A:377:THR:O	1:A:378:SER:HB2	2.19	0.42
1:A:179:PRO:HB3	1:A:257:LEU:HD22	2.01	0.41
1:A:306:LEU:HD12	2:A:500:COA:O9P	2.21	0.41

There are no symmetry-related clashes.

5.3 Torsion angles

5.3.1 Protein backbone ⓘ

In the following table, the Percentiles column shows the percent Ramachandran outliers of the chain as a percentile score with respect to all X-ray entries followed by that with respect to entries of similar resolution. The Analysed column shows the number of residues for which the backbone conformation was analysed, and the total number of residues.

Mol	Chain	Analysed	Favoured	Allowed	Outliers	Percentiles	
1	A	270/278 (97%)	262 (97%)	8 (3%)	0	100	100

There are no Ramachandran outliers to report.

5.3.2 Protein sidechains ⓘ

In the following table, the Percentiles column shows the percent sidechain outliers of the chain as a percentile score with respect to all X-ray entries followed by that with respect to entries of similar resolution. The Analysed column shows the number of residues for which the sidechain conformation was analysed, and the total number of residues.

Mol	Chain	Analysed	Rotameric	Outliers	Percentiles	
1	A	254/259 (98%)	243 (96%)	11 (4%)	40	45

All (11) residues with a non-rotameric sidechain are listed below:

Mol	Chain	Res	Type
1	A	202	LEU
1	A	209	LYS
1	A	219	THR
1	A	242	ARG
1	A	251	LEU
1	A	278	ARG
1	A	295	GLU
1	A	344	LEU
1	A	406	ASN
1	A	416	LEU
1	A	420	LYS

Some sidechains can be flipped to improve hydrogen bonding and reduce clashes. All (5) such sidechains are listed below:

Mol	Chain	Res	Type
1	A	222	HIS
1	A	261	HIS
1	A	284	HIS
1	A	312	GLN
1	A	406	ASN

5.3.3 RNA ⓘ

There are no RNA chains in this entry.

5.4 Non-standard residues in protein, DNA, RNA chains ⓘ

1 non-standard protein/DNA/RNA residue is modelled in this entry.

In the following table, the Counts columns list the number of bonds (or angles) for which Mogul statistics could be retrieved, the number of bonds (or angles) that are observed in the model and the number of bonds (or angles) that are defined in the chemical component dictionary. The Link column lists molecule types, if any, to which the group is linked. The Z score for a bond length (or angle) is the number of standard deviations the observed value is removed from the expected value. A bond length (or angle) with $|Z| > 2$ is considered an outlier worth inspection. RMSZ is the root-mean-square of all Z scores of the bond lengths (or angles).

Mol	Type	Chain	Res	Link	Bond lengths			Bond angles		
					Counts	RMSZ	$\# Z > 2$	Counts	RMSZ	$\# Z > 2$
1	SCY	A	304	1	8,8,9	6.34	3 (37%)	7,9,11	4.22	2 (28%)

In the following table, the Chirals column lists the number of chiral outliers, the number of chiral

centers analysed, the number of these observed in the model and the number defined in the chemical component dictionary. Similar counts are reported in the Torsion and Rings columns. '-' means no outliers of that kind were identified.

Mol	Type	Chain	Res	Link	Chirals	Torsions	Rings
1	SCY	A	304	1	-	0/5/7/9	0/0/0/0

All (3) bond length outliers are listed below:

Mol	Chain	Res	Type	Atoms	Z	Observed(Å)	Ideal(Å)
1	A	304	SCY	O-C	17.34	1.23	1.11
1	A	304	SCY	CA-C	2.95	1.53	1.48
1	A	304	SCY	CB-SG	2.56	1.84	1.81

All (2) bond angle outliers are listed below:

Mol	Chain	Res	Type	Atoms	Z	Observed(°)	Ideal(°)
1	A	304	SCY	CB-SG-CD	-8.66	94.83	100.97
1	A	304	SCY	C-CA-N	-6.93	106.91	113.83

There are no chirality outliers.

There are no torsion outliers.

There are no ring outliers.

5.5 Carbohydrates

There are no carbohydrates in this entry.

5.6 Ligand geometry

1 ligand is modelled in this entry.

In the following table, the Counts columns list the number of bonds (or angles) for which Mogul statistics could be retrieved, the number of bonds (or angles) that are observed in the model and the number of bonds (or angles) that are defined in the chemical component dictionary. The Link column lists molecule types, if any, to which the group is linked. The Z score for a bond length (or angle) is the number of standard deviations the observed value is removed from the expected value. A bond length (or angle) with $|Z| > 2$ is considered an outlier worth inspection. RMSZ is the root-mean-square of all Z scores of the bond lengths (or angles).

Mol	Type	Chain	Res	Link	Bond lengths			Bond angles		
					Counts	RMSZ	$\# Z > 2$	Counts	RMSZ	$\# Z > 2$
2	COA	A	500	-	50,50,50	1.99	13 (26%)	75,75,75	1.50	10 (13%)

In the following table, the Chirals column lists the number of chiral outliers, the number of chiral centers analysed, the number of these observed in the model and the number defined in the chemical component dictionary. Similar counts are reported in the Torsion and Rings columns. '-' means no outliers of that kind were identified.

Mol	Type	Chain	Res	Link	Chirals	Torsions	Rings
2	COA	A	500	-	-	0/48/64/64	0/1/3/3

All (13) bond length outliers are listed below:

Mol	Chain	Res	Type	Atoms	Z	Observed(Å)	Ideal(Å)
2	A	500	COA	O9P-C9P	6.74	1.36	1.23
2	A	500	COA	CBP-CAP	4.91	1.60	1.55
2	A	500	COA	P1A-O3A	-3.88	1.52	1.59
2	A	500	COA	C2A-N1A	3.38	1.40	1.33
2	A	500	COA	O4B-C1B	3.30	1.46	1.41
2	A	500	COA	CCP-CBP	3.00	1.57	1.52
2	A	500	COA	P3B-O3B	2.78	1.68	1.59
2	A	500	COA	O5P-C5P	2.78	1.29	1.23
2	A	500	COA	P3B-O7A	2.56	1.59	1.51
2	A	500	COA	C3P-N4P	2.48	1.52	1.46
2	A	500	COA	OAP-CAP	2.42	1.46	1.42
2	A	500	COA	C8A-N9A	2.19	1.39	1.36
2	A	500	COA	O4B-C4B	2.19	1.50	1.45

All (10) bond angle outliers are listed below:

Mol	Chain	Res	Type	Atoms	Z	Observed(°)	Ideal(°)
2	A	500	COA	CEP-CBP-CCP	-4.88	101.72	108.76
2	A	500	COA	P3B-O3B-C3B	-4.71	112.03	121.96
2	A	500	COA	CEP-CBP-CAP	3.79	115.39	108.82
2	A	500	COA	O4B-C1B-C2B	-3.11	102.00	106.77
2	A	500	COA	C4A-C5A-N7A	3.11	112.18	109.52
2	A	500	COA	CDP-CBP-CCP	3.05	113.15	108.76
2	A	500	COA	N3A-C2A-N1A	-2.73	126.42	128.71
2	A	500	COA	C2P-C3P-N4P	-2.72	106.36	112.45
2	A	500	COA	CCP-CBP-CAP	-2.09	105.64	108.70
2	A	500	COA	C5A-C4A-N9A	-2.07	104.18	107.16

There are no chirality outliers.

There are no torsion outliers.

There are no ring outliers.

5.7 Other polymers ⓘ

There are no such residues in this entry.

5.8 Polymer linkage issues

There are no chain breaks in this entry.

6 Fit of model and data ⓘ

6.1 Protein, DNA and RNA chains ⓘ

EDS was not executed - this section will therefore be empty.

6.2 Non-standard residues in protein, DNA, RNA chains ⓘ

EDS was not executed - this section will therefore be empty.

6.3 Carbohydrates ⓘ

EDS was not executed - this section will therefore be empty.

6.4 Ligands ⓘ

EDS was not executed - this section will therefore be empty.

6.5 Other polymers ⓘ

EDS was not executed - this section will therefore be empty.