



Full wwPDB X-ray Structure Validation Report ⓘ

Feb 26, 2014 – 05:31 PM GMT

PDB ID : 3MJN
Title : Crystal Structure of the complex of C-lobe of lactoferrin with isopropylamino-3-(1-naphthyloxy)propan-2-olat 2.38 Å Resolution
Authors : Srivastava, K.; Vikram, G.; Kaushik, S.; Sinha, M.; Kaur, P.; Sharma, S.; Singh, T.P.
Deposited on : 2010-04-13
Resolution : 2.38 Å(reported)

This is a full wwPDB validation report for a publicly released PDB entry.
We welcome your comments at validation@mail.wwpdb.org
A user guide is available at <http://wwpdb.org/ValidationPDFNotes.html>

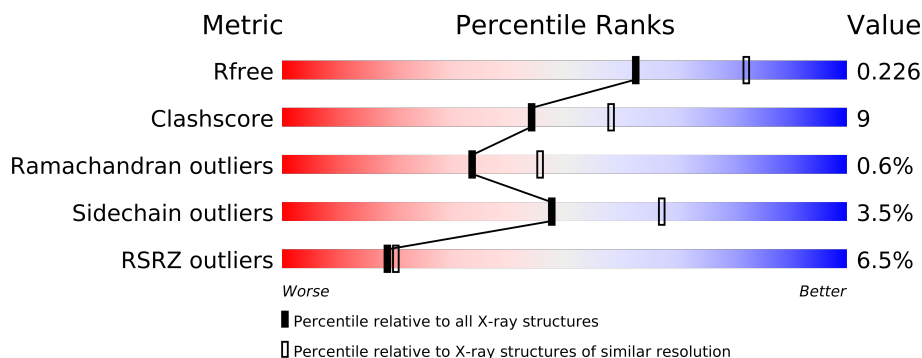
The following versions of software and data (see [references](#)) were used in the production of this report:

MolProbity : 4.02b-467
Mogul : 1.15 2013
Xtriage (Phenix) : dev-1323
EDS : stable22639
Percentile statistics : 21963
Refmac : 5.8.0049
CCP4 : 6.3.0 (Settle)
Ideal geometry (proteins) : Engh & Huber (2001)
Ideal geometry (DNA, RNA) : Parkinson et. al. (1996)
Validation Pipeline (wwPDB-VP) : stable22683

1 Overall quality at a glance

The reported resolution of this entry is 2.38 Å.

Percentile scores (ranging between 0-100) for global validation metrics of the entry are shown in the following graphic. The table shows the number of entries on which the scores are based.



Metric	Whole archive (#Entries)	Similar resolution (#Entries, resolution range(Å))
R_{free}	66092	2963 (2.40-2.36)
Clashscore	79885	3668 (2.40-2.36)
Ramachandran outliers	78287	3600 (2.40-2.36)
Sidechain outliers	78261	3602 (2.40-2.36)
RSRZ outliers	66119	2966 (2.40-2.36)

The table below summarises the geometric issues observed across the polymeric chains and their fit to the electron density. The red, orange, yellow and green segments on the lower bar indicate the fraction of residues that contain outliers for ≥ 3 , 2, 1 and 0 types of geometric quality criteria. The upper red bar (where present) indicates the fraction of residues that have poor fit to the electron density.

Mol	Chain	Length	Quality of chain
1	A	345	

The following table lists non-polymeric compounds that are outliers for geometric or electron-density-fit criteria:

Mol	Type	Chain	Res	Geometry	Electron density
8	RNP	A	691	-	X

2 Entry composition

There are 9 unique types of molecules in this entry. The entry contains 2968 atoms, of which 0 are hydrogen and 0 are deuterium.

In the tables below, the ZeroOcc column contains the number of atoms modelled with zero occupancy, the AltConf column contains the number of residues with at least one atom in alternate conformation and the Trace column contains the number of residues modelled with at most 2 atoms.

- Molecule 1 is a protein called Lactotransferrin.

Mol	Chain	Residues	Atoms					ZeroOcc	AltConf	Trace
1	A	341	Total	C	N	O	S	0	0	0
			2604	1622	454	507	21			

There are 2 discrepancies between the modelled and reference sequences:

Chain	Residue	Modelled	Actual	Comment	Reference
A	565	LYS	ASN	SEE REMARK 999	UNP P24627
A	608	GLU	LYS	SEE REMARK 999	UNP P24627

- Molecule 2 is a polymer of unknown type called SUGAR (3-MER).

Mol	Chain	Residues	Atoms				ZeroOcc	AltConf
2	A	3	Total	C	N	O	0	0
			39	22	2	15		

There are 2 discrepancies between the modelled and reference sequences:

Chain	Residue	Modelled	Actual	Comment	Reference
A	565	LYS	ASN	SEE REMARK 999	UNP P24627
A	608	GLU	LYS	SEE REMARK 999	UNP P24627

- Molecule 3 is a polymer of unknown type called SUGAR (2-MER).

Mol	Chain	Residues	Atoms				ZeroOcc	AltConf
3	A	2	Total	C	N	O	0	0
			28	16	2	10		
3	A	2	Total	C	N	O	0	0
			28	16	2	10		

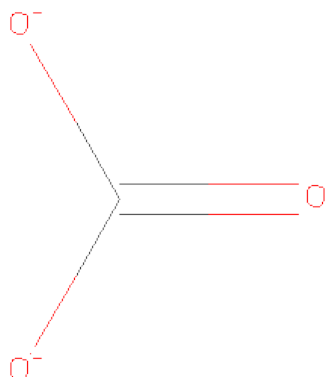
There are 4 discrepancies between the modelled and reference sequences:

Chain	Residue	Modelled	Actual	Comment	Reference
A	565	LYS	ASN	SEE REMARK 999	UNP P24627
A	608	GLU	LYS	SEE REMARK 999	UNP P24627
A	565	LYS	ASN	SEE REMARK 999	UNP P24627
A	608	GLU	LYS	SEE REMARK 999	UNP P24627

- Molecule 4 is FE (III) ION (three-letter code: FE) (formula: Fe).

Mol	Chain	Residues	Atoms	ZeroOcc	AltConf
4	A	1	Total Fe 1 1	0	0

- Molecule 5 is CARBONATE ION (three-letter code: CO3) (formula: CO₃).



Mol	Chain	Residues	Atoms	ZeroOcc	AltConf
5	A	1	Total C O 4 1 3	0	0

- Molecule 6 is ZINC ION (three-letter code: ZN) (formula: Zn).

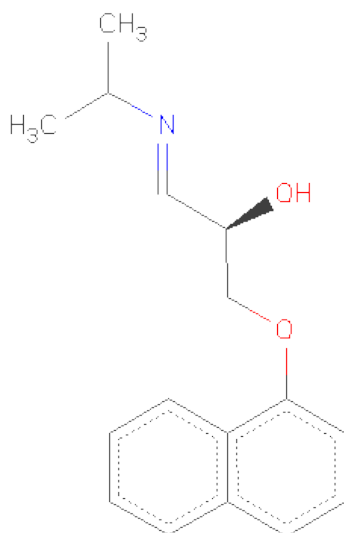
Mol	Chain	Residues	Atoms	ZeroOcc	AltConf
6	A	2	Total Zn 2 2	0	0

- Molecule 7 is SULFATE ION (three-letter code: SO4) (formula: O₄S).



Mol	Chain	Residues	Atoms			ZeroOcc	AltConf
7	A	1	Total	O	S	0	0
			5	4	1		

- Molecule 8 is (1E,2R)-1-(ISOPROPYLIMINO)-3-(1-NAPHTHYLOXY)PROPAN-2-OL (three-letter code: RNP) (formula: C₁₆H₁₉NO₂).



Mol	Chain	Residues	Atoms				ZeroOcc	AltConf
8	A	1	Total	C	N	O	0	0
			19	16	1	2		

- Molecule 9 is water.

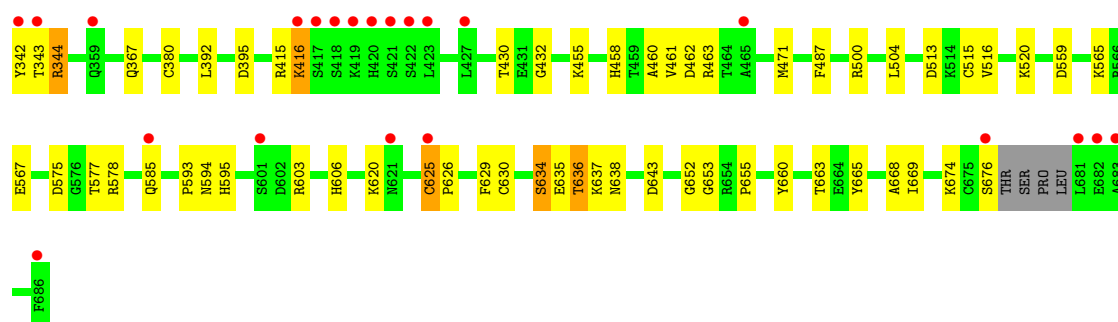
Mol	Chain	Residues	Atoms		ZeroOcc	AltConf
9	A	238	Total 238	O 238	0	0

3 Residue-property plots i

These plots are drawn for all protein, RNA and DNA chains in the entry. The first graphic for a chain summarises the proportions of errors displayed in the second graphic. The second graphic shows the sequence view annotated by issues in geometry and electron density. Residues are color-coded according to the number of geometric quality criteria for which they contain at least one outlier: green = 0, yellow = 1, orange = 2 and red = 3 or more. A red dot above a residue indicates a poor fit to the electron density ($RSRZ > 2$). Stretches of 2 or more consecutive residues without any outlier are shown as a green connector. Residues present in the sample, but not in the model, are shown in grey.

• Molecule 1: Lactotransferrin

Chain A:



4 Data and refinement statistics

Property	Value	Source
Space group	P 1 21 1	Depositor
Cell constants a, b, c, α , β , γ	63.11Å 50.25Å 65.65Å 90.00° 107.82° 90.00°	Depositor
Resolution (Å)	62.50 – 2.38 27.01 – 2.38	Depositor EDS
% Data completeness (in resolution range)	97.4 (62.50-2.38) 97.5 (27.01-2.38)	Depositor EDS
R_{merge}	(Not available)	Depositor
R_{sym}	0.09	Depositor
$\langle I/\sigma(I) \rangle$ ¹	2.39 (at 2.39Å)	Xtriage
Refinement program	REFMAC 5.2.0019	Depositor
R, R_{free}	0.171 , 0.211 0.172 , 0.226	Depositor DCC
R_{free} test set	773 reflections (5.24%)	DCC
Wilson B-factor (Å ²)	31.4	Xtriage
Anisotropy	0.264	Xtriage
Bulk solvent k_{sol} (e/Å ³), B_{sol} (Å ²)	0.30 , 29.1	EDS
Estimated twinning fraction	0.024 for l,-k,h	Xtriage
L-test for twinning	$\langle L \rangle = 0.49$, $\langle L^2 \rangle = 0.32$	Xtriage
Outliers	0 of 15519 reflections	Xtriage
F_o, F_c correlation	0.95	EDS
Total number of atoms	2968	wwPDB-VP
Average B, all atoms (Å ²)	33.0	wwPDB-VP

Xtriage's analysis on translational NCS is as follows: *The largest off-origin peak in the Patterson function is 6.96% of the height of the origin peak. No significant pseudotranslation is detected.*

¹Intensities estimated from amplitudes.

5 Model quality

5.1 Standard geometry

Bond lengths and bond angles in the following residue types are not validated in this section: ZN, BMA, NAG, CO3, FE, RNP, SO4

The Z score for a bond length (or angle) is the number of standard deviations the observed value is removed from the expected value. A bond length (or angle) with $|Z| > 5$ is considered an outlier worth inspection. RMSZ is the root-mean-square of all Z scores of the bond lengths (or angles).

Mol	Chain	Bond lengths		Bond angles	
		RMSZ	$\# Z > 5$	RMSZ	$\# Z > 5$
1	A	0.58	0/2652	0.66	0/3591

There are no bond length outliers.

There are no bond angle outliers.

There are no chirality outliers.

There are no planarity outliers.

5.2 Close contacts

In the following table, the Non-H and H(model) columns list the number of non-hydrogen atoms and hydrogen atoms in the chain respectively. The H(added) column lists the number of hydrogens added by MolProbity. The Clashes column lists the number of clashes within the asymmetric unit, and the number in parentheses is this value normalized per 1000 atoms of the molecule in the chain. The Symm-Clashes column gives symmetry related clashes, in the same way as for the Clashes column.

Mol	Chain	Non-H	H(model)	H(added)	Clashes	Symm-Clashes
1	A	2604	0	2519	44	0
2	A	39	0	34	1	0
3	A	56	0	50	2	0
4	A	1	0	0	0	0
5	A	4	0	0	0	0
6	A	2	0	0	0	0
7	A	5	0	0	0	0
8	A	19	0	19	12	0
9	A	238	0	0	0	0
All	All	2968	0	2622	46	0

Clashscore is defined as the number of clashes calculated for the entry per 1000 atoms (including

hydrogens) of the entry. The overall clashscore for this entry is 9.

All (46) close contacts within the same asymmetric unit are listed below.

Atom-1	Atom-2	Distance(Å)	Clash(Å)
1:A:653:GLY:HA3	8:A:691:RNP:H152	1.57	0.84
1:A:638:ASN:HD22	1:A:643:ASP:H	1.26	0.81
1:A:655:PRO:HB3	8:A:691:RNP:H14	1.67	0.75
1:A:343:THR:HG21	3:A:687:NAG:H62	1.72	0.70
1:A:625:CYS:HA	1:A:629:PHE:O	1.92	0.70
1:A:343:THR:N	1:A:606:HIS:NE2	2.40	0.69
1:A:460:ALA:HB3	1:A:463:ARG:HD3	1.75	0.68
1:A:638:ASN:ND2	1:A:643:ASP:H	1.93	0.65
1:A:565:LYS:HD3	1:A:567:GLU:H	1.63	0.64
1:A:653:GLY:HA3	8:A:691:RNP:C15	2.28	0.62
1:A:593:PRO:HA	8:A:691:RNP:C3	2.32	0.60
1:A:635:GLU:O	1:A:636:THR:HG22	2.03	0.59
1:A:655:PRO:HD3	8:A:691:RNP:H153	1.85	0.58
1:A:342:TYR:HA	1:A:606:HIS:NE2	2.17	0.58
1:A:430:THR:HB	1:A:594:ASN:ND2	2.18	0.58
1:A:668:ALA:HB1	2:A:1:NAG:H83	1.86	0.58
1:A:416:LYS:NZ	1:A:620:LYS:HE3	2.21	0.56
1:A:593:PRO:HA	8:A:691:RNP:C4	2.38	0.54
1:A:415:ARG:NH1	1:A:432:GLY:O	2.37	0.53
1:A:655:PRO:HB3	8:A:691:RNP:C14	2.37	0.52
1:A:461:VAL:O	1:A:462:ASP:HB2	2.10	0.52
1:A:455:LYS:HB3	1:A:504:LEU:HD11	1.90	0.52
1:A:458:HIS:HE1	1:A:471:MET:HE3	1.75	0.52
1:A:625:CYS:C	1:A:630:CYS:SG	2.90	0.50
1:A:660:TYR:HD1	8:A:691:RNP:H12	1.77	0.49
1:A:575:ASP:OD1	1:A:577:THR:HB	2.12	0.49
1:A:471:MET:HE1	1:A:487:PHE:HE2	1.78	0.49
8:A:691:RNP:O2	8:A:691:RNP:H14	2.13	0.48
1:A:665:TYR:CZ	1:A:669:ILE:HD11	2.49	0.48
1:A:416:LYS:HZ1	1:A:620:LYS:HE3	1.79	0.48
1:A:655:PRO:HB3	8:A:691:RNP:C15	2.45	0.46
1:A:603:ARG:HH22	1:A:606:HIS:CE1	2.35	0.45
1:A:344:ARG:HD3	1:A:367:GLN:O	2.15	0.45
8:A:691:RNP:O2	8:A:691:RNP:C14	2.64	0.45
1:A:513:ASP:O	1:A:516:VAL:HG22	2.18	0.44
1:A:513:ASP:OD2	1:A:520:LYS:HD3	2.17	0.44
1:A:395:ASP:HA	1:A:595:HIS:CD2	2.53	0.44
1:A:585:GLN:HG2	3:A:689:NAG:H81	2.00	0.44
1:A:625:CYS:O	1:A:626:PRO:C	2.55	0.43
1:A:380:CYS:HB3	1:A:392:LEU:HD13	2.01	0.43

Continued on next page...

Continued from previous page...

Atom-1	Atom-2	Distance(Å)	Clash(Å)
1:A:625:CYS:HB3	1:A:626:PRO:HD3	2.01	0.42
1:A:577:THR:CG2	1:A:578:ARG:N	2.82	0.42
1:A:665:TYR:CE2	1:A:669:ILE:HD11	2.54	0.42
1:A:655:PRO:CD	8:A:691:RNP:H153	2.49	0.41
1:A:344:ARG:HB2	1:A:344:ARG:HE	1.61	0.41
1:A:634:SER:O	1:A:637:LYS:HD2	2.22	0.40

There are no symmetry-related clashes.

5.3 Torsion angles

5.3.1 Protein backbone ⓘ

In the following table, the Percentiles column shows the percent Ramachandran outliers of the chain as a percentile score with respect to all X-ray entries followed by that with respect to entries of similar resolution. The Analysed column shows the number of residues for which the backbone conformation was analysed, and the total number of residues.

Mol	Chain	Analysed	Favoured	Allowed	Outliers	Percentiles	
1	A	337/345 (98%)	317 (94%)	18 (5%)	2 (1%)	33	46

All (2) Ramachandran outliers are listed below:

Mol	Chain	Res	Type
1	A	634	SER
1	A	652	GLY

5.3.2 Protein sidechains ⓘ

In the following table, the Percentiles column shows the percent sidechain outliers of the chain as a percentile score with respect to all X-ray entries followed by that with respect to entries of similar resolution. The Analysed column shows the number of residues for which the sidechain conformation was analysed, and the total number of residues.

Mol	Chain	Analysed	Rotameric	Outliers	Percentiles	
1	A	282/286 (99%)	272 (96%)	10 (4%)	48	67

All (10) residues with a non-rotameric sidechain are listed below:

Mol	Chain	Res	Type
1	A	344	ARG
1	A	416	LYS
1	A	500	ARG
1	A	515	CYS
1	A	559	ASP
1	A	625	CYS
1	A	636	THR
1	A	663	THR
1	A	674	LYS
1	A	676	SER

Some sidechains can be flipped to improve hydrogen bonding and reduce clashes. All (2) such sidechains are listed below:

Mol	Chain	Res	Type
1	A	355	GLN
1	A	638	ASN

5.3.3 RNA ⓘ

There are no RNA chains in this entry.

5.4 Non-standard residues in protein, DNA, RNA chains ⓘ

There are no non-standard protein/DNA/RNA residues in this entry.

5.5 Carbohydrates ⓘ

7 carbohydrates are modelled in this entry.

In the following table, the Counts columns list the number of bonds (or angles) for which Mogul statistics could be retrieved, the number of bonds (or angles) that are observed in the model and the number of bonds (or angles) that are defined in the chemical component dictionary. The Link column lists molecule types, if any, to which the group is linked. The Z score for a bond length (or angle) is the number of standard deviations the observed value is removed from the expected value. A bond length (or angle) with $|Z| > 2$ is considered an outlier worth inspection. RMSZ is the root-mean-square of all Z scores of the bond lengths (or angles).

Mol	Type	Chain	Res	Link	Bond lengths			Bond angles		
					Counts	RMSZ	$\# Z > 2$	Counts	RMSZ	$\# Z > 2$
2	NAG	A	1	1,2	12,14,15	0.83	1 (8%)	15,19,21	2.11	5 (33%)
2	NAG	A	2	2	12,14,15	0.48	0	15,19,21	2.31	4 (26%)

Mol	Type	Chain	Res	Link	Bond lengths			Bond angles		
					Counts	RMSZ	# Z > 2	Counts	RMSZ	# Z > 2
2	BMA	A	3	2	10,11,12	0.64	0	11,15,17	1.43	1 (9%)
3	NAG	A	687	1,3	12,14,15	0.65	0	15,19,21	0.62	0
3	NAG	A	688	3	12,14,15	0.70	0	15,19,21	1.30	1 (6%)
3	NAG	A	689	1,3	12,14,15	0.57	0	15,19,21	0.91	0
3	NAG	A	690	3	12,14,15	0.53	0	15,19,21	1.84	3 (20%)

In the following table, the Chirals column lists the number of chiral outliers, the number of chiral centers analysed, the number of these observed in the model and the number defined in the chemical component dictionary. Similar counts are reported in the Torsion and Rings columns. '-' means no outliers of that kind were identified.

Mol	Type	Chain	Res	Link	Chirals	Torsions	Rings
2	NAG	A	1	1,2	-	0/6/23/26	0/1/1/1
2	NAG	A	2	2	-	0/6/23/26	0/1/1/1
2	BMA	A	3	2	-	0/2/19/22	0/1/1/1
3	NAG	A	687	1,3	-	0/6/23/26	0/1/1/1
3	NAG	A	688	3	-	0/6/23/26	0/1/1/1
3	NAG	A	689	1,3	-	0/6/23/26	0/1/1/1
3	NAG	A	690	3	-	0/6/23/26	0/1/1/1

All (1) bond length outliers are listed below:

Mol	Chain	Res	Type	Atoms	Z	Observed(Å)	Ideal(Å)
2	A	1	NAG	O5-C5	-2.14	1.41	1.45

All (14) bond angle outliers are listed below:

Mol	Chain	Res	Type	Atoms	Z	Observed(°)	Ideal(°)
2	A	2	NAG	C3-C2-N2	-5.84	102.87	111.76
3	A	690	NAG	O5-C5-C6	5.36	112.61	106.98
2	A	2	NAG	O5-C5-C4	4.70	116.61	110.65
3	A	688	NAG	C2-N2-C7	4.16	130.07	123.09
2	A	1	NAG	O5-C5-C4	-3.97	105.62	110.65
2	A	1	NAG	C2-N2-C7	-3.84	116.64	123.09
2	A	3	BMA	C4-C3-C2	-3.67	105.58	110.50
2	A	1	NAG	O5-C5-C6	3.63	110.79	106.98
2	A	1	NAG	C3-C4-C5	-3.16	104.55	110.20
2	A	2	NAG	C3-C4-C5	2.62	114.88	110.20
2	A	1	NAG	C8-C7-N2	2.51	121.02	116.11
3	A	690	NAG	O5-C5-C4	-2.39	107.63	110.65
2	A	2	NAG	O4-C4-C3	-2.23	105.35	110.35

Continued on next page...

Continued from previous page...

Mol	Chain	Res	Type	Atoms	Z	Observed(°)	Ideal(°)
3	A	690	NAG	C3-C4-C5	-2.13	106.39	110.20

There are no chirality outliers.

There are no torsion outliers.

There are no ring outliers.

5.6 Ligand geometry ⓘ

Of 6 ligands modelled in this entry, 3 are monoatomic - leaving 3 for Mogul analysis.

In the following table, the Counts columns list the number of bonds (or angles) for which Mogul statistics could be retrieved, the number of bonds (or angles) that are observed in the model and the number of bonds (or angles) that are defined in the chemical component dictionary. The Link column lists molecule types, if any, to which the group is linked. The Z score for a bond length (or angle) is the number of standard deviations the observed value is removed from the expected value. A bond length (or angle) with $|Z| > 2$ is considered an outlier worth inspection. RMSZ is the root-mean-square of all Z scores of the bond lengths (or angles).

Mol	Type	Chain	Res	Link	Bond lengths			Bond angles		
					Counts	RMSZ	$\# Z > 2$	Counts	RMSZ	$\# Z > 2$
5	CO3	A	1002	4	0,3,3	0.00	-	0,3,3	0.00	-
7	SO4	A	1005	-	4,4,4	0.15	0	6,6,6	0.18	0
8	RNP	A	691	-	20,20,20	4.92	2 (10%)	26,26,26	1.76	4 (15%)

In the following table, the Chirals column lists the number of chiral outliers, the number of chiral centers analysed, the number of these observed in the model and the number defined in the chemical component dictionary. Similar counts are reported in the Torsion and Rings columns. '-' means no outliers of that kind were identified.

Mol	Type	Chain	Res	Link	Chirals	Torsions	Rings
5	CO3	A	1002	4	-	0/0/0/0	0/0/0/0
7	SO4	A	1005	-	-	0/0/0/0	0/0/0/0
8	RNP	A	691	-	-	0/9/10/10	0/0/2/2

All (2) bond length outliers are listed below:

Mol	Chain	Res	Type	Atoms	Z	Observed(Å)	Ideal(Å)
8	A	691	RNP	C13-N1	21.13	1.46	1.26
8	A	691	RNP	C12-C13	4.92	1.54	1.49

All (4) bond angle outliers are listed below:

Mol	Chain	Res	Type	Atoms	Z	Observed($^{\circ}$)	Ideal($^{\circ}$)
8	A	691	RNP	C14-N1-C13	6.62	123.78	117.89
8	A	691	RNP	C16-C14-N1	3.40	112.61	109.02
8	A	691	RNP	O1-C1-C2	-2.19	118.86	124.33
8	A	691	RNP	O1-C1-C9	2.12	121.03	114.92

There are no chirality outliers.

There are no torsion outliers.

There are no ring outliers.

5.7 Other polymers ⓘ

There are no such residues in this entry.

5.8 Polymer linkage issues

There are no chain breaks in this entry.

6 Fit of model and data ⓘ

6.1 Protein, DNA and RNA chains ⓘ

In the following table, the column labelled ‘#RSRZ> 2’ contains the number (and percentage) of RSRZ outliers, followed by percent RSRZ outliers for the chain as percentile scores relative to all X-ray entries and entries of similar resolution. The OWAB column contains the minimum, median, 95th percentile and maximum values of the occupancy-weighted average B-factor per residue. The column labelled ‘Q< 0.9’ lists the number of (and percentage) of residues with an average occupancy less than 0.9.

Mol	Chain	Analysed	<RSRZ>	#RSRZ>2		OWAB(Å ²)	Q<0.9
1	A	341/345 (98%)	0.27	22 (6%)	18 20	16, 28, 52, 76	6 (1%)

All (22) RSRZ outliers are listed below:

Mol	Chain	Res	Type	RSRZ
1	A	681	LEU	11.0
1	A	421	SER	7.7
1	A	682	GLU	6.8
1	A	423	LEU	6.7
1	A	420	HIS	6.4
1	A	418	SER	6.3
1	A	419	LYS	6.0
1	A	422	SER	6.0
1	A	601	SER	5.5
1	A	417	SER	4.9
1	A	416	LYS	4.8
1	A	683	ALA	4.5
1	A	342	TYR	3.8
1	A	343	THR	3.6
1	A	359	GLN	3.0
1	A	585	GLN	2.7
1	A	621	ASN	2.5
1	A	625	CYS	2.5
1	A	676	SER	2.3
1	A	686	PHE	2.3
1	A	427	LEU	2.1
1	A	465	ALA	2.0

6.2 Non-standard residues in protein, DNA, RNA chains ⓘ

There are no non-standard protein/DNA/RNA residues in this entry.

6.3 Carbohydrates ⓘ

In the following table, the Atoms column lists the number of modelled atoms in the group and the number defined in the chemical component dictionary. LLDF column lists the quality of electron density of the group with respect to its neighbouring residues in protein, DNA or RNA chains. The B-factors column lists the minimum, median, 95th percentile and maximum values of B factors of atoms in the group. The column labelled 'Q< 0.9' lists the number of atoms with occupancy less than 0.9.

Mol	Type	Chain	Res	Atoms	RSR	LLDF	B-factors(Å ²)	Q<0.9
2	NAG	A	2	14/15	0.38	3.23	63,67,68,72	0
3	NAG	A	687	14/15	0.25	1.44	58,63,68,74	0
2	NAG	A	1	14/15	0.20	1.18	40,48,54,58	0
3	NAG	A	689	14/15	0.12	-0.52	34,37,42,47	0
3	NAG	A	690	14/15	0.20	-0.71	51,54,56,57	0
3	NAG	A	688	14/15	0.54	-	79,82,82,83	0
2	BMA	A	3	11/12	0.33	-	74,75,76,76	0

6.4 Ligands ⓘ

In the following table, the Atoms column lists the number of modelled atoms in the group and the number defined in the chemical component dictionary. LLDF column lists the quality of electron density of the group with respect to its neighbouring residues in protein, DNA or RNA chains. The B-factors column lists the minimum, median, 95th percentile and maximum values of B factors of atoms in the group. The column labelled 'Q< 0.9' lists the number of atoms with occupancy less than 0.9.

Mol	Type	Chain	Res	Atoms	RSR	LLDF	B-factors(Å ²)	Q<0.9
8	RNP	A	691	19/19	0.58	7.59	51,52,52,53	0
7	SO4	A	1005	5/5	0.20	1.00	62,62,63,63	0
5	CO3	A	1002	4/4	0.18	-0.09	13,13,13,14	0
6	ZN	A	1003	1/1	0.06	-1.16	34,34,34,34	0
4	FE	A	1001	1/1	0.11	-3.00	20,20,20,20	0
6	ZN	A	1004	1/1	0.05	-3.10	39,39,39,39	0

6.5 Other polymers ⓘ

There are no such residues in this entry.