



Full wwPDB X-ray Structure Validation Report

Feb 26, 2014 – 10:51 PM GMT

PDB ID : 4MK7
Title : Hepatitis C Virus polymerase NS5B genotype 1b (BK) in complex with inhibitor 2 (3-(3-tert-butyl-4-methoxyphenyl)pyridin-2(1H)-one)
Authors : Harris, S.F.; Wong, A.
Deposited on : 2013-09-04
Resolution : 2.80 Å(reported)

This is a full wwPDB validation report for a publicly released PDB entry.
We welcome your comments at validation@mail.wwpdb.org
A user guide is available at <http://wwpdb.org/ValidationPDFNotes.html>

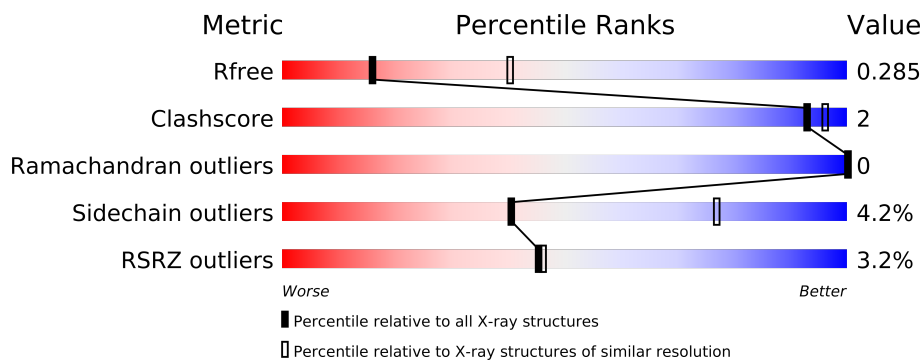
The following versions of software and data (see [references](#)) were used in the production of this report:

MolProbity : 4.02b-467
Mogul : 1.15 2013
Xtriage (Phenix) : dev-1323
EDS : stable22639
Percentile statistics : 21963
Refmac : 5.8.0049
CCP4 : 6.3.0 (Settle)
Ideal geometry (proteins) : Engh & Huber (2001)
Ideal geometry (DNA, RNA) : Parkinson et. al. (1996)
Validation Pipeline (wwPDB-VP) : stable22683

1 Overall quality at a glance

The reported resolution of this entry is 2.80 Å.

Percentile scores (ranging between 0-100) for global validation metrics of the entry are shown in the following graphic. The table shows the number of entries on which the scores are based.



Metric	Whole archive (#Entries)	Similar resolution (#Entries, resolution range(Å))
R_{free}	66092	1799 (2.80-2.80)
Clashscore	79885	2295 (2.80-2.80)
Ramachandran outliers	78287	2252 (2.80-2.80)
Sidechain outliers	78261	2254 (2.80-2.80)
RSRZ outliers	66119	1802 (2.80-2.80)

The table below summarises the geometric issues observed across the polymeric chains and their fit to the electron density. The red, orange, yellow and green segments on the lower bar indicate the fraction of residues that contain outliers for ≥ 3 , 2, 1 and 0 types of geometric quality criteria. The upper red bar (where present) indicates the fraction of residues that have poor fit to the electron density.

Mol	Chain	Length	Quality of chain
1	A	570	
1	B	570	

The following table lists non-polymeric compounds that are outliers for geometric or electron-density-fit criteria:

Mol	Type	Chain	Res	Geometry	Electron density
3	DMS	A	602	-	X

2 Entry composition

There are 5 unique types of molecules in this entry. The entry contains 9024 atoms, of which 14 are hydrogens and 0 are deuterium.

In the tables below, the ZeroOcc column contains the number of atoms modelled with zero occupancy, the AltConf column contains the number of residues with at least one atom in alternate conformation and the Trace column contains the number of residues modelled with at most 2 atoms.

- Molecule 1 is a protein called RNA-DIRECTED RNA POLYMERASE.

Mol	Chain	Residues	Atoms					ZeroOcc	AltConf	Trace
1	A	557	Total	C	N	O	S	0	3	0
			4362	2752	771	806	33			
1	B	559	Total	C	N	O	S	0	4	0
			4376	2759	774	808	35			

There are 2 discrepancies between the modelled and reference sequences:

Chain	Residue	Modelled	Actual	Comment	Reference
A	1	HIS	-	EXPRESSION TAG	UNP P26663
B	1	HIS	-	EXPRESSION TAG	UNP P26663

- Molecule 2 is MAGNESIUM ION (three-letter code: MG) (formula: Mg).

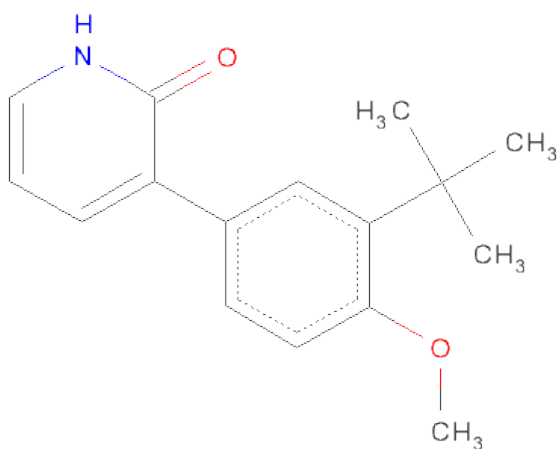
Mol	Chain	Residues	Atoms		ZeroOcc	AltConf
2	A	1	Total	Mg	0	0
			1	1		

- Molecule 3 is DIMETHYL SULFOXIDE (three-letter code: DMS) (formula: C₂H₆OS).



Mol	Chain	Residues	Atoms					ZeroOcc	AltConf
3	A	1	Total	C	H	O	S	0	0
			10	2	6	1	1		
3	B	1	Total	C	H	O	S	0	0
			10	2	6	1	1		

- Molecule 4 is 3-(3-TERT-BUTYL-4-METHOXYPHENYL)PYRIDIN-2(1H)-ONE (three-letter code: 28O) (formula: C₁₆H₁₉NO₂).



Mol	Chain	Residues	Atoms					ZeroOcc	AltConf
4	A	1	Total	C	H	N	O	0	0
			20	16	1	1	2		

Continued on next page...

Continued from previous page...

Mol	Chain	Residues	Atoms					ZeroOcc	AltConf
4	B	1	Total	C	H	N	O	0	0
			20	16	1	1	2		

- Molecule 5 is water.

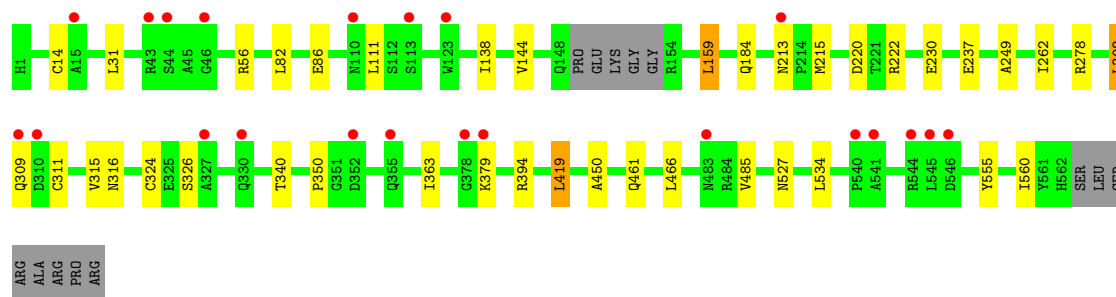
Mol	Chain	Residues	Atoms		ZeroOcc	AltConf
5	A	111	Total	O	0	0
			111	111		
5	B	114	Total	O	0	0
			114	114		

3 Residue-property plots

These plots are drawn for all protein, RNA and DNA chains in the entry. The first graphic for a chain summarises the proportions of errors displayed in the second graphic. The second graphic shows the sequence view annotated by issues in geometry and electron density. Residues are color-coded according to the number of geometric quality criteria for which they contain at least one outlier: green = 0, yellow = 1, orange = 2 and red = 3 or more. A red dot above a residue indicates a poor fit to the electron density ($RSRZ > 2$). Stretches of 2 or more consecutive residues without any outlier are shown as a green connector. Residues present in the sample, but not in the model, are shown in grey.

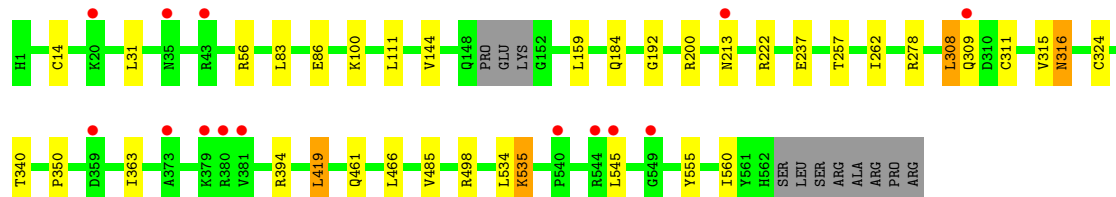
• Molecule 1: RNA-DIRECTED RNA POLYMERASE

Chain A: 



• Molecule 1: RNA-DIRECTED RNA POLYMERASE

Chain B: 



4 Data and refinement statistics

Property	Value	Source
Space group	P 21 21 21	Depositor
Cell constants a, b, c, α , β , γ	89.90Å 112.42Å 125.93Å 90.00° 90.00° 90.00°	Depositor
Resolution (Å)	38.00 – 2.80 38.00 – 2.80	Depositor EDS
% Data completeness (in resolution range)	97.2 (38.00-2.80) 97.3 (38.00-2.80)	Depositor EDS
R_{merge}	0.21	Depositor
R_{sym}	(Not available)	Depositor
$\langle I/\sigma(I) \rangle$ ¹	2.01 (at 2.81Å)	Xtriage
Refinement program	BUSTER 2.11.4	Depositor
R, R_{free}	0.220 , 0.272 0.232 , 0.285	Depositor DCC
R_{free} test set	1581 reflections (5.34%)	DCC
Wilson B-factor (Å ²)	35.3	Xtriage
Anisotropy	0.232	Xtriage
Bulk solvent k_{sol} (e/Å ³), B_{sol} (Å ²)	0.36 , 35.1	EDS
Estimated twinning fraction	No twinning to report.	Xtriage
L-test for twinning	$\langle L \rangle = 0.49$, $\langle L^2 \rangle = 0.32$	Xtriage
Outliers	1 of 31207 reflections (0.003%)	Xtriage
F_o, F_c correlation	0.93	EDS
Total number of atoms	9024	wwPDB-VP
Average B, all atoms (Å ²)	35.0	wwPDB-VP

Xtriage's analysis on translational NCS is as follows: *The analyses of the Patterson function reveals a significant off-origin peak that is 45.02 % of the origin peak, indicating pseudo translational symmetry. The chance of finding a peak of this or larger height randomly in a structure without pseudo translational symmetry is equal to 1.4040e-04. The detected translational NCS is most likely also responsible for the elevated intensity ratio.*

¹Intensities estimated from amplitudes.

5 Model quality

5.1 Standard geometry

Bond lengths and bond angles in the following residue types are not validated in this section: MG, DMS, 28O

The Z score for a bond length (or angle) is the number of standard deviations the observed value is removed from the expected value. A bond length (or angle) with $|Z| > 5$ is considered an outlier worth inspection. RMSZ is the root-mean-square of all Z scores of the bond lengths (or angles).

Mol	Chain	Bond lengths		Bond angles	
		RMSZ	# $ Z > 5$	RMSZ	# $ Z > 5$
1	A	0.45	0/4457	0.63	0/6046
1	B	0.45	0/4471	0.64	0/6064
All	All	0.45	0/8928	0.64	0/12110

There are no bond length outliers.

There are no bond angle outliers.

There are no chirality outliers.

There are no planarity outliers.

5.2 Close contacts

In the following table, the Non-H and H(model) columns list the number of non-hydrogen atoms and hydrogen atoms in the chain respectively. The H(added) column lists the number of hydrogens added by MolProbity. The Clashes column lists the number of clashes within the asymmetric unit, and the number in parentheses is this value normalized per 1000 atoms of the molecule in the chain. The Symm-Clashes column gives symmetry related clashes, in the same way as for the Clashes column.

Mol	Chain	Non-H	H(model)	H(added)	Clashes	Symm-Clashes
1	A	4362	0	4381	13	0
1	B	4376	0	4391	16	0
2	A	1	0	0	0	0
3	A	4	6	0	0	0
3	B	4	6	0	0	0
4	A	19	1	18	0	0
4	B	19	1	18	0	0
5	A	111	0	0	1	0
5	B	114	0	0	5	0
All	All	9010	14	8808	29	0

Clashscore is defined as the number of clashes calculated for the entry per 1000 atoms (including hydrogens) of the entry. The overall clashscore for this entry is 2.

All (29) close contacts within the same asymmetric unit are listed below.

Atom-1	Atom-2	Distance(Å)	Clash(Å)
1:B:262:ILE:HG23	5:B:800:HOH:O	1.67	0.94
1:B:192:GLY:HA3	1:B:316:ASN:HD22	1.54	0.72
1:A:527:ASN:HD21	1:A:534:LEU:H	1.49	0.60
1:B:257:THR:CG2	5:B:800:HOH:O	2.50	0.58
1:A:86:GLU:HA	1:A:111:LEU:HD21	1.85	0.58
1:B:86:GLU:HA	1:B:111:LEU:HD21	1.85	0.57
1:A:450:ALA:HB1	5:A:792:HOH:O	2.06	0.55
1:B:200:ARG:HD2	5:B:732:HOH:O	2.07	0.54
1:A:215:MET:HB2	1:A:326:SER:HB2	1.90	0.54
1:B:192:GLY:HA3	1:B:316:ASN:ND2	2.20	0.53
1:B:340:THR:HG23	1:B:350:PRO:HG3	1.89	0.53
1:B:257:THR:HG22	5:B:800:HOH:O	2.09	0.50
1:B:200:ARG:HH12	1:B:316:ASN:HD21	1.58	0.49
1:A:309:GLN:O	1:A:324:CYS:HB2	2.13	0.49
1:B:309:GLN:O	1:B:324:CYS:HB2	2.13	0.49
1:B:535:LYS:HD2	1:B:535:LYS:H	1.79	0.47
1:A:82:LEU:HD13	1:A:249:ALA:HB2	1.97	0.46
1:A:230:GLU:HG3	1:A:262:ILE:HD12	1.99	0.45
1:B:144:VAL:HB	1:B:394:ARG:HG2	1.98	0.45
1:A:340:THR:HG23	1:A:350:PRO:HG3	1.99	0.44
1:B:257:THR:HG23	5:B:800:HOH:O	2.12	0.44
1:A:144:VAL:HB	1:A:394:ARG:HG2	1.99	0.44
1:A:308:LEU:HB3	1:A:311:CYS:SG	2.58	0.44
1:B:308:LEU:HB3	1:B:311:CYS:SG	2.60	0.42
1:A:555:TYR:CD1	1:A:560:ILE:HG13	2.56	0.41
1:B:555:TYR:CD1	1:B:560:ILE:HG13	2.56	0.41
1:A:419:LEU:HD23	1:A:485:VAL:HG21	2.03	0.40
1:A:138:ILE:HD11	1:A:159:LEU:HG	2.03	0.40
1:B:419:LEU:HD23	1:B:485:VAL:HG21	2.03	0.40

There are no symmetry-related clashes.

5.3 Torsion angles

5.3.1 Protein backbone ⓘ

In the following table, the Percentiles column shows the percent Ramachandran outliers of the chain as a percentile score with respect to all X-ray entries followed by that with respect to entries

of similar resolution. The Analysed column shows the number of residues for which the backbone conformation was analysed, and the total number of residues.

Mol	Chain	Analysed	Favoured	Allowed	Outliers	Percentiles	
1	A	556/570 (98%)	543 (98%)	13 (2%)	0	100	100
1	B	559/570 (98%)	542 (97%)	17 (3%)	0	100	100
All	All	1115/1140 (98%)	1085 (97%)	30 (3%)	0	100	100

There are no Ramachandran outliers to report.

5.3.2 Protein sidechains ⓘ

In the following table, the Percentiles column shows the percent sidechain outliers of the chain as a percentile score with respect to all X-ray entries followed by that with respect to entries of similar resolution. The Analysed column shows the number of residues for which the sidechain conformation was analysed, and the total number of residues.

Mol	Chain	Analysed	Rotameric	Outliers	Percentiles	
1	A	478/485 (99%)	460 (96%)	18 (4%)	44	80
1	B	479/485 (99%)	457 (95%)	22 (5%)	37	73
All	All	957/970 (99%)	917 (96%)	40 (4%)	40	77

All (40) residues with a non-rotameric sidechain are listed below:

Mol	Chain	Res	Type
1	A	14	CYS
1	A	31	LEU
1	A	56	ARG
1	A	159	LEU
1	A	184	GLN
1	A	213	ASN
1	A	220	ASP
1	A	222	ARG
1	A	237	GLU
1	A	278	ARG
1	A	308	LEU
1	A	315	VAL
1	A	316	ASN
1	A	363	ILE
1	A	379	LYS
1	A	419	LEU
1	A	461	GLN

Continued on next page...

Continued from previous page...

Mol	Chain	Res	Type
1	A	466	LEU
1	B	14	CYS
1	B	31	LEU
1	B	56	ARG
1	B	83	LEU
1	B	100	LYS
1	B	159	LEU
1	B	184	GLN
1	B	213	ASN
1	B	222	ARG
1	B	237	GLU
1	B	278	ARG
1	B	308	LEU
1	B	315	VAL
1	B	316	ASN
1	B	363	ILE
1	B	419	LEU
1	B	461	GLN
1	B	466	LEU
1	B	498	ARG
1	B	534	LEU
1	B	535	LYS
1	B	545	LEU

Some sidechains can be flipped to improve hydrogen bonding and reduce clashes. All (5) such sidechains are listed below:

Mol	Chain	Res	Type
1	A	527	ASN
1	B	28	ASN
1	B	95	HIS
1	B	148	GLN
1	B	316	ASN

5.3.3 RNA ⓘ

There are no RNA chains in this entry.

5.4 Non-standard residues in protein, DNA, RNA chains ⓘ

There are no non-standard protein/DNA/RNA residues in this entry.

5.5 Carbohydrates

There are no carbohydrates in this entry.

5.6 Ligand geometry

Of 5 ligands modelled in this entry, 1 is monoatomic - leaving 4 for Mogul analysis.

In the following table, the Counts columns list the number of bonds (or angles) for which Mogul statistics could be retrieved, the number of bonds (or angles) that are observed in the model and the number of bonds (or angles) that are defined in the chemical component dictionary. The Link column lists molecule types, if any, to which the group is linked. The Z score for a bond length (or angle) is the number of standard deviations the observed value is removed from the expected value. A bond length (or angle) with $|Z| > 2$ is considered an outlier worth inspection. RMSZ is the root-mean-square of all Z scores of the bond lengths (or angles).

Mol	Type	Chain	Res	Link	Bond lengths			Bond angles		
					Counts	RMSZ	# $ Z > 2$	Counts	RMSZ	# $ Z > 2$
3	DMS	A	602	-	3,3,3	0.28	0	3,3,3	0.24	0
4	28O	A	603	-	20,20,20	0.76	1 (5%)	27,29,29	0.91	1 (3%)
3	DMS	B	601	-	3,3,3	0.38	0	3,3,3	0.10	0
4	28O	B	602	-	20,20,20	0.76	1 (5%)	27,29,29	0.84	1 (3%)

In the following table, the Chirals column lists the number of chiral outliers, the number of chiral centers analysed, the number of these observed in the model and the number defined in the chemical component dictionary. Similar counts are reported in the Torsion and Rings columns. '-' means no outliers of that kind were identified.

Mol	Type	Chain	Res	Link	Chirals	Torsions	Rings
3	DMS	A	602	-	-	0/0/0/0	0/0/0/0
4	28O	A	603	-	-	0/12/12/12	0/2/2/2
3	DMS	B	601	-	-	0/0/0/0	0/0/0/0
4	28O	B	602	-	-	0/12/12/12	0/2/2/2

All (2) bond length outliers are listed below:

Mol	Chain	Res	Type	Atoms	Z	Observed(Å)	Ideal(Å)
4	B	602	28O	C14-N16	2.13	1.40	1.37
4	A	603	28O	C14-N16	2.04	1.40	1.37

All (2) bond angle outliers are listed below:

Mol	Chain	Res	Type	Atoms	Z	Observed(°)	Ideal(°)
4	A	603	28O	C14-C13-C1	-3.39	118.58	122.55

Continued on next page...

Continued from previous page...

Mol	Chain	Res	Type	Atoms	Z	Observed(°)	Ideal(°)
4	B	602	28O	C14-C13-C1	-2.88	119.17	122.55

There are no chirality outliers.

There are no torsion outliers.

There are no ring outliers.

5.7 Other polymers ⓘ

There are no such residues in this entry.

5.8 Polymer linkage issues

There are no chain breaks in this entry.

6 Fit of model and data ⓘ

6.1 Protein, DNA and RNA chains ⓘ

In the following table, the column labelled ‘#RSRZ> 2’ contains the number (and percentage) of RSRZ outliers, followed by percent RSRZ outliers for the chain as percentile scores relative to all X-ray entries and entries of similar resolution. The OWAB column contains the minimum, median, 95th percentile and maximum values of the occupancy-weighted average B-factor per residue. The column labelled ‘Q< 0.9’ lists the number of (and percentage) of residues with an average occupancy less than 0.9.

Mol	Chain	Analysed	<RSRZ>	#RSRZ>2	OWAB(Å ²)	Q<0.9
1	A	557/570 (97%)	0.14	22 (3%) 37 37	17, 34, 57, 76	0
1	B	559/570 (98%)	0.06	14 (2%) 54 55	17, 31, 52, 91	0
All	All	1116/1140 (97%)	0.10	36 (3%) 45 46	17, 33, 54, 91	0

All (36) RSRZ outliers are listed below:

Mol	Chain	Res	Type	RSRZ
1	A	546	ASP	3.5
1	A	379	LYS	3.4
1	B	544	ARG	3.1
1	B	35	ASN	3.0
1	A	110	ASN	2.9
1	A	44	SER	2.8
1	B	213	ASN	2.7
1	A	113	SER	2.7
1	A	46	GLY	2.6
1	A	540	PRO	2.6
1	A	309	GLN	2.6
1	A	310	ASP	2.6
1	A	43	ARG	2.5
1	B	43	ARG	2.5
1	A	352	ASP	2.5
1	A	378	GLY	2.4
1	B	549	GLY	2.4
1	B	373	ALA	2.3
1	A	545	LEU	2.3
1	B	381	VAL	2.3
1	A	123	TRP	2.3
1	B	545	LEU	2.2
1	B	359	ASP	2.2
1	A	15	ALA	2.2

Continued on next page...

Continued from previous page...

Mol	Chain	Res	Type	RSRZ
1	A	213	ASN	2.2
1	B	380	ARG	2.2
1	B	379	LYS	2.1
1	A	483	ASN	2.1
1	A	544	ARG	2.1
1	B	309	GLN	2.1
1	A	327	ALA	2.1
1	A	355	GLN	2.1
1	B	540	PRO	2.1
1	A	541	ALA	2.0
1	A	330	GLN	2.0
1	B	20	LYS	2.0

6.2 Non-standard residues in protein, DNA, RNA chains ⓘ

There are no non-standard protein/DNA/RNA residues in this entry.

6.3 Carbohydrates ⓘ

There are no carbohydrates in this entry.

6.4 Ligands ⓘ

In the following table, the Atoms column lists the number of modelled atoms in the group and the number defined in the chemical component dictionary. LLDF column lists the quality of electron density of the group with respect to its neighbouring residues in protein, DNA or RNA chains. The B-factors column lists the minimum, median, 95th percentile and maximum values of B factors of atoms in the group. The column labelled 'Q< 0.9' lists the number of atoms with occupancy less than 0.9.

Mol	Type	Chain	Res	Atoms	RSR	LLDF	B-factors(Å ²)	Q<0.9
3	DMS	A	602	4/4	0.24	2.80	49,49,51,51	0
2	MG	A	601	1/1	0.28	1.29	37,37,37,37	0
3	DMS	B	601	4/4	0.18	1.06	42,44,46,46	0
4	28O	A	603	19/19	0.21	1.06	32,35,37,37	0
4	28O	B	602	19/19	0.17	0.08	20,25,29,30	0

6.5 Other polymers ⓘ

There are no such residues in this entry.