



# Full wwPDB X-ray Structure Validation Report ⓘ

Mar 31, 2014 – 03:27 PM BST

PDB ID : 4MKF  
Title : Crystal structure of a stable adenylate kinase variant AKv3  
Authors : Moon, S.; Jung, D.; Bae, E.  
Deposited on : 2013-09-05  
Resolution : 1.70 Å(reported)

This is a full wwPDB validation report for a publicly released PDB entry.  
We welcome your comments at [validation@mail.wwpdb.org](mailto:validation@mail.wwpdb.org)  
A user guide is available at <http://wwpdb.org/ValidationPDFNotes.html>

---

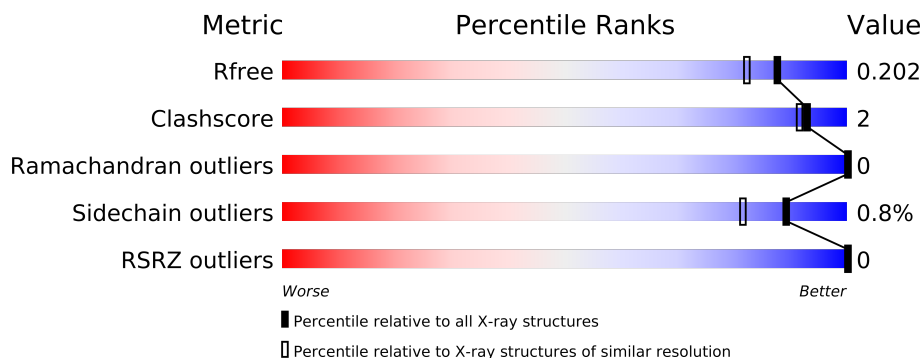
The following versions of software and data (see [references](#)) were used in the production of this report:

MolProbity : 4.02b-467  
Mogul : 1.15 2013  
Xtriage (Phenix) : dev-1323  
EDS : stable23004  
Percentile statistics : 21963  
Refmac : 5.8.0049  
CCP4 : 6.3.0 (Settle)  
Ideal geometry (proteins) : Engh & Huber (2001)  
Ideal geometry (DNA, RNA) : Parkinson et. al. (1996)  
Validation Pipeline (wwPDB-VP) : stable23004

# 1 Overall quality at a glance

The reported resolution of this entry is 1.70 Å.

Percentile scores (ranging between 0-100) for global validation metrics of the entry are shown in the following graphic. The table shows the number of entries on which the scores are based.



Metric	Whole archive (#Entries)	Similar resolution (#Entries, resolution range(Å))
$R_{free}$	66092	2456 (1.70-1.70)
Clashscore	79885	2929 (1.70-1.70)
Ramachandran outliers	78287	2878 (1.70-1.70)
Sidechain outliers	78261	2878 (1.70-1.70)
RSRZ outliers	66119	2456 (1.70-1.70)

The table below summarises the geometric issues observed across the polymeric chains and their fit to the electron density. The red, orange, yellow and green segments on the lower bar indicate the fraction of residues that contain outliers for  $\geq 3$ , 2, 1 and 0 types of geometric quality criteria. The upper red bar (where present) indicates the fraction of residues that have poor fit to the electron density.

Mol	Chain	Length	Quality of chain
1	A	217	<div><div></div><div></div><div></div><div></div><div></div></div>
1	B	217	<div><div></div><div></div><div></div><div></div><div></div></div>

The following table lists non-polymeric compounds that are outliers for geometric or electron-density-fit criteria:

Mol	Type	Chain	Res	Geometry	Electron density
3	MG	B	302	-	X
5	CA	A	304	-	X
5	CA	A	306	-	X
5	CA	B	305	-	X

## 2 Entry composition

There are 6 unique types of molecules in this entry. The entry contains 3980 atoms, of which 0 are hydrogen and 0 are deuterium.

In the tables below, the ZeroOcc column contains the number of atoms modelled with zero occupancy, the AltConf column contains the number of residues with at least one atom in alternate conformation and the Trace column contains the number of residues modelled with at most 2 atoms.

- Molecule 1 is a protein called Adenylate kinase.

Mol	Chain	Residues	Atoms					ZeroOcc	AltConf	Trace
1	A	217	Total	C	N	O	S	0	0	0
			1692	1063	281	337	11			
1	B	217	Total	C	N	O	S	0	0	0
			1692	1063	281	337	11			

There are 10 discrepancies between the modelled and reference sequences:

Chain	Residue	Modelled	Actual	Comment	Reference
A	19	LYS	ARG	ENGINEERED MUTATION	UNP P16304
A	116	ARG	ASP	ENGINEERED MUTATION	UNP P16304
A	179	MET	THR	ENGINEERED MUTATION	UNP P16304
A	198	GLU	GLN	ENGINEERED MUTATION	UNP P16304
A	202	GLU	GLN	ENGINEERED MUTATION	UNP P16304
B	19	LYS	ARG	ENGINEERED MUTATION	UNP P16304
B	116	ARG	ASP	ENGINEERED MUTATION	UNP P16304
B	179	MET	THR	ENGINEERED MUTATION	UNP P16304
B	198	GLU	GLN	ENGINEERED MUTATION	UNP P16304
B	202	GLU	GLN	ENGINEERED MUTATION	UNP P16304

- Molecule 2 is ZINC ION (three-letter code: ZN) (formula: Zn).

Mol	Chain	Residues	Atoms		ZeroOcc	AltConf
2	B	1	Total	Zn	0	0
			1	1		
2	A	1	Total	Zn	0	0
			1	1		

- Molecule 3 is MAGNESIUM ION (three-letter code: MG) (formula: Mg).

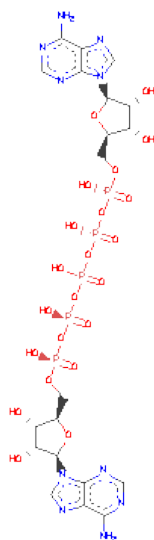
Mol	Chain	Residues	Atoms		ZeroOcc	AltConf
3	B	1	Total	Mg	0	0
			1	1		

*Continued on next page...*

*Continued from previous page...*

Mol	Chain	Residues	Atoms		ZeroOcc	AltConf
3	A	1	Total	Mg	0	0
			1	1		

- Molecule 4 is BIS(ADENOSINE)-5'-PENTAPHOSPHATE (three-letter code: AP5) (formula:  $C_{20}H_{29}N_{10}O_{22}P_5$ ).



Mol	Chain	Residues	Atoms					ZeroOcc	AltConf
4	A	1	Total	C	N	O	P	0	0
			57	20	10	22	5		
4	B	1	Total	C	N	O	P	0	0
			57	20	10	22	5		

- Molecule 5 is CALCIUM ION (three-letter code: CA) (formula: Ca).

Mol	Chain	Residues	Atoms		ZeroOcc	AltConf
5	B	4	Total	Ca	0	0
			4	4		
5	A	3	Total	Ca	0	0
			3	3		

- Molecule 6 is water.

Mol	Chain	Residues	Atoms		ZeroOcc	AltConf
6	A	229	Total	O	0	0
			229	229		

*Continued on next page...*

*Continued from previous page...*

Mol	Chain	Residues	Atoms		ZeroOcc	AltConf
6	B	242	Total 242	O 242	0	0

### 3 Residue-property plots

These plots are drawn for all protein, RNA and DNA chains in the entry. The first graphic for a chain summarises the proportions of errors displayed in the second graphic. The second graphic shows the sequence view annotated by issues in geometry and electron density. Residues are color-coded according to the number of geometric quality criteria for which they contain at least one outlier: green = 0, yellow = 1, orange = 2 and red = 3 or more. A red dot above a residue indicates a poor fit to the electron density ( $RSRZ > 2$ ). Stretches of 2 or more consecutive residues without any outlier are shown as a green connector. Residues present in the sample, but not in the model, are shown in grey.

- Molecule 1: Adenylate kinase

Chain A: 



- Molecule 1: Adenylate kinase

Chain B: 



## 4 Data and refinement statistics

Property	Value	Source
Space group	P 1 21 1	Depositor
Cell constants a, b, c, $\alpha$ , $\beta$ , $\gamma$	34.45Å 75.01Å 77.19Å 90.00° 100.89° 90.00°	Depositor
Resolution (Å)	26.99 – 1.70 26.99 – 1.70	Depositor EDS
% Data completeness (in resolution range)	99.8 (26.99-1.70) 99.8 (26.99-1.70)	Depositor EDS
$R_{merge}$	(Not available)	Depositor
$R_{sym}$	(Not available)	Depositor
$\langle I/\sigma(I) \rangle$ <sup>1</sup>	3.86 (at 1.71Å)	Xtriage
Refinement program	REFMAC 5.6.0117	Depositor
R, $R_{free}$	0.157 , 0.203 0.157 , 0.202	Depositor DCC
$R_{free}$ test set	2131 reflections (5.31%)	DCC
Wilson B-factor (Å <sup>2</sup> )	15.9	Xtriage
Anisotropy	0.030	Xtriage
Bulk solvent $k_{sol}$ (e/Å <sup>3</sup> ), $B_{sol}$ (Å <sup>2</sup> )	0.39 , 40.1	EDS
Estimated twinning fraction	0.022 for h,-k,-h-l	Xtriage
L-test for twinning	$\langle  L  \rangle = 0.49$ , $\langle L^2 \rangle = 0.32$	Xtriage
Outliers	0 of 42234 reflections	Xtriage
$F_o, F_c$ correlation	0.97	EDS
Total number of atoms	3980	wwPDB-VP
Average B, all atoms (Å <sup>2</sup> )	20.0	wwPDB-VP

Xtriage's analysis on translational NCS is as follows: *The analyses of the Patterson function reveals a significant off-origin peak that is 51.32 % of the origin peak, indicating pseudo translational symmetry. The chance of finding a peak of this or larger height randomly in a structure without pseudo translational symmetry is equal to 5.7055e-05. The detected translational NCS is most likely also responsible for the elevated intensity ratio.*

<sup>1</sup>Intensities estimated from amplitudes.

## 5 Model quality i

### 5.1 Standard geometry i

Bond lengths and bond angles in the following residue types are not validated in this section: MG, CA, ZN, AP5

The Z score for a bond length (or angle) is the number of standard deviations the observed value is removed from the expected value. A bond length (or angle) with  $|Z| > 5$  is considered an outlier worth inspection. RMSZ is the root-mean-square of all Z scores of the bond lengths (or angles).

Mol	Chain	Bond lengths		Bond angles	
		RMSZ	$\# Z  > 5$	RMSZ	$\# Z  > 5$
1	A	1.03	3/1717 (0.2%)	1.05	7/2311 (0.3%)
1	B	1.03	2/1717 (0.1%)	1.11	5/2311 (0.2%)
All	All	1.03	5/3434 (0.1%)	1.08	12/4622 (0.3%)

All (5) bond length outliers are listed below:

Mol	Chain	Res	Type	Atoms	Z	Observed(Å)	Ideal(Å)
1	B	36	ARG	CZ-NH2	8.00	1.43	1.33
1	B	109	TYR	CG-CD1	5.77	1.46	1.39
1	A	191	TYR	CB-CG	-5.57	1.43	1.51
1	A	32	GLY	N-CA	5.49	1.54	1.46
1	A	22	GLU	CD-OE1	5.12	1.31	1.25

All (12) bond angle outliers are listed below:

Mol	Chain	Res	Type	Atoms	Z	Observed(°)	Ideal(°)
1	A	176	MET	CG-SD-CE	-9.20	85.48	100.20
1	A	61	ASP	CB-CG-OD1	6.86	124.47	118.30
1	B	84	ASP	CB-CG-OD1	6.69	124.32	118.30
1	B	88	ARG	CG-CD-NE	-5.97	99.25	111.80
1	A	212	LEU	CB-CG-CD2	5.68	120.66	111.00
1	A	191	TYR	CB-CA-C	-5.60	99.19	110.40
1	A	160	ARG	NE-CZ-NH1	5.39	123.00	120.30
1	B	176	MET	CG-SD-CE	-5.38	91.59	100.20
1	B	76	ASP	CB-CG-OD2	5.36	123.13	118.30
1	A	54	ASP	CB-CG-OD2	5.16	122.94	118.30
1	A	215	LEU	CB-CG-CD2	-5.13	102.28	111.00
1	B	137	TYR	CB-CG-CD1	-5.04	117.98	121.00

There are no chirality outliers.



There are no planarity outliers.

## 5.2 Close contacts

In the following table, the Non-H and H(model) columns list the number of non-hydrogen atoms and hydrogen atoms in the chain respectively. The H(added) column lists the number of hydrogens added by MolProbity. The Clashes column lists the number of clashes within the asymmetric unit, and the number in parentheses is this value normalized per 1000 atoms of the molecule in the chain. The Symm-Clashes column gives symmetry related clashes, in the same way as for the Clashes column.

Mol	Chain	Non-H	H(model)	H(added)	Clashes	Symm-Clashes
1	A	1692	0	0	5	0
1	B	1692	0	0	1	0
2	A	1	0	0	0	0
2	B	1	0	0	0	0
3	A	1	0	0	0	0
3	B	1	0	0	0	0
4	A	57	0	0	0	0
4	B	57	0	0	0	0
5	A	3	0	0	0	0
5	B	4	0	0	0	0
6	A	229	0	0	2	0
6	B	242	0	0	0	0
All	All	3980	0	0	6	0

Clashscore is defined as the number of clashes calculated for the entry per 1000 atoms (including hydrogens) of the entry. The overall clashscore for this entry is 2.

All (6) close contacts within the same asymmetric unit are listed below.

Atom-1	Atom-2	Distance(Å)	Clash(Å)
1:A:177:LYS:NZ	6:A:556:HOH:O	2.39	0.56
1:A:173:GLU:OE2	1:A:177:LYS:NZ	2.46	0.48
1:A:172:LEU:O	1:A:176:MET:CG	2.64	0.45
1:A:33:ASP:OD1	1:A:36:ARG:NH2	2.50	0.44
1:B:172:LEU:O	1:B:176:MET:CG	2.66	0.44
1:A:79:ARG:NH1	6:A:592:HOH:O	2.52	0.41

There are no symmetry-related clashes.

## 5.3 Torsion angles

### 5.3.1 Protein backbone ⓘ

In the following table, the Percentiles column shows the percent Ramachandran outliers of the chain as a percentile score with respect to all X-ray entries followed by that with respect to entries of similar resolution. The Analysed column shows the number of residues for which the backbone conformation was analysed, and the total number of residues.

Mol	Chain	Analysed	Favoured	Allowed	Outliers	Percentiles	
1	A	215/217 (99%)	212 (99%)	3 (1%)	0	100	100
1	B	215/217 (99%)	214 (100%)	1 (0%)	0	100	100
All	All	430/434 (99%)	426 (99%)	4 (1%)	0	100	100

There are no Ramachandran outliers to report.

### 5.3.2 Protein sidechains ⓘ

In the following table, the Percentiles column shows the percent sidechain outliers of the chain as a percentile score with respect to all X-ray entries followed by that with respect to entries of similar resolution. The Analysed column shows the number of residues for which the sidechain conformation was analysed, and the total number of residues.

Mol	Chain	Analysed	Rotameric	Outliers	Percentiles	
1	A	184/184 (100%)	184 (100%)	0	100	100
1	B	184/184 (100%)	181 (98%)	3 (2%)	75	58
All	All	368/368 (100%)	365 (99%)	3 (1%)	89	81

All (3) residues with a non-rotameric sidechain are listed below:

Mol	Chain	Res	Type
1	B	51	SER
1	B	78	GLU
1	B	118	ASP

Some sidechains can be flipped to improve hydrogen bonding and reduce clashes. There are no such sidechains identified.

### 5.3.3 RNA ⓘ

There are no RNA chains in this entry.

## 5.4 Non-standard residues in protein, DNA, RNA chains ⓘ

There are no non-standard protein/DNA/RNA residues in this entry.

## 5.5 Carbohydrates ⓘ

There are no carbohydrates in this entry.

## 5.6 Ligand geometry ⓘ

Of 13 ligands modelled in this entry, 11 are monoatomic - leaving 2 for Mogul analysis.

In the following table, the Counts columns list the number of bonds (or angles) for which Mogul statistics could be retrieved, the number of bonds (or angles) that are observed in the model and the number of bonds (or angles) that are defined in the chemical component dictionary. The Link column lists molecule types, if any, to which the group is linked. The Z score for a bond length (or angle) is the number of standard deviations the observed value is removed from the expected value. A bond length (or angle) with  $|Z| > 2$  is considered an outlier worth inspection. RMSZ is the root-mean-square of all Z scores of the bond lengths (or angles).

Mol	Type	Chain	Res	Link	Bond lengths			Bond angles		
					Counts	RMSZ	$\# Z  > 2$	Counts	RMSZ	$\# Z  > 2$
4	AP5	A	303	3	62,62,62	1.51	11 (17%)	98,98,98	2.06	18 (18%)
4	AP5	B	303	3	62,62,62	1.49	10 (16%)	98,98,98	1.86	22 (22%)

In the following table, the Chirals column lists the number of chiral outliers, the number of chiral centers analysed, the number of these observed in the model and the number defined in the chemical component dictionary. Similar counts are reported in the Torsion and Rings columns. '-' means no outliers of that kind were identified.

Mol	Type	Chain	Res	Link	Chirals	Torsions	Rings
4	AP5	A	303	3	-	0/44/76/76	0/2/6/6
4	AP5	B	303	3	-	0/44/76/76	0/2/6/6

All (21) bond length outliers are listed below:

Mol	Chain	Res	Type	Atoms	Z	Observed(Å)	Ideal(Å)
4	B	303	AP5	C4B-N9B	-4.95	1.30	1.37
4	A	303	AP5	C4B-N9B	-4.59	1.31	1.37
4	A	303	AP5	C4A-N9A	-4.05	1.31	1.37
4	B	303	AP5	C2A-N3A	3.83	1.39	1.32
4	A	303	AP5	C5B-C4B	3.73	1.48	1.40
4	B	303	AP5	PG-O3B	3.34	1.65	1.59

*Continued on next page...*

*Continued from previous page...*

Mol	Chain	Res	Type	Atoms	Z	Observed(Å)	Ideal(Å)
4	B	303	AP5	C5A-C4A	2.93	1.47	1.40
4	B	303	AP5	O4F-C1F	2.89	1.45	1.41
4	B	303	AP5	C5B-C4B	2.81	1.46	1.40
4	A	303	AP5	O4F-C1F	2.80	1.45	1.41
4	A	303	AP5	C4B-N3B	2.67	1.39	1.35
4	A	303	AP5	O2F-C2F	2.65	1.49	1.43
4	A	303	AP5	PG-O3G	2.44	1.64	1.59
4	A	303	AP5	C2A-N3A	2.33	1.36	1.32
4	B	303	AP5	C4A-N9A	-2.30	1.34	1.37
4	B	303	AP5	C5A-N7A	-2.22	1.32	1.40
4	A	303	AP5	PB-O3B	2.21	1.63	1.59
4	A	303	AP5	C2B-N1B	2.16	1.38	1.33
4	A	303	AP5	C5A-C4A	2.13	1.45	1.40
4	B	303	AP5	PD-O2D	-2.09	1.45	1.55
4	B	303	AP5	PB-O2B	-2.02	1.46	1.55

All (40) bond angle outliers are listed below:

Mol	Chain	Res	Type	Atoms	Z	Observed(°)	Ideal(°)
4	A	303	AP5	N3B-C2B-N1B	-8.45	121.64	128.71
4	A	303	AP5	N3A-C2A-N1A	-8.16	121.88	128.71
4	A	303	AP5	C8B-N9B-C4B	7.17	112.37	106.90
4	B	303	AP5	C4A-C5A-N7A	-5.46	104.84	109.52
4	A	303	AP5	N3B-C4B-N9B	5.02	134.49	125.43
4	B	303	AP5	N3A-C2A-N1A	-4.98	124.55	128.71
4	B	303	AP5	N3A-C4A-N9A	4.97	134.41	125.43
4	B	303	AP5	C8B-N9B-C4B	4.81	110.57	106.90
4	B	303	AP5	N3B-C2B-N1B	-4.40	125.03	128.71
4	A	303	AP5	O4J-C1J-N9B	-4.13	104.59	108.44
4	B	303	AP5	C4B-C5B-N7B	-3.91	106.18	109.52
4	B	303	AP5	O4F-C1F-N9A	-3.72	104.98	108.44
4	B	303	AP5	C1F-N9A-C4A	-3.68	120.28	126.64
4	B	303	AP5	O3G-PG-O3B	-3.59	94.36	101.66
4	A	303	AP5	C4B-C5B-N7B	-3.31	106.69	109.52
4	A	303	AP5	N3A-C4A-N9A	3.26	131.31	125.43
4	B	303	AP5	C5A-C4A-N3A	-3.16	118.82	125.70
4	A	303	AP5	C2B-N1B-C6B	3.14	124.44	118.77
4	B	303	AP5	N6B-C6B-N1B	2.96	125.17	119.36
4	A	303	AP5	O4F-C1F-N9A	-2.71	105.92	108.44
4	A	303	AP5	C2A-N1A-C6A	2.69	123.63	118.77
4	B	303	AP5	N3B-C4B-N9B	2.68	130.27	125.43
4	A	303	AP5	O3B-PB-O3A	-2.67	96.23	101.66

*Continued on next page...*

*Continued from previous page...*

Mol	Chain	Res	Type	Atoms	Z	Observed(°)	Ideal(°)
4	B	303	AP5	O3F-C3F-C4F	-2.63	103.32	111.08
4	A	303	AP5	N7B-C8B-N9B	-2.60	107.00	114.36
4	B	303	AP5	C3F-C2F-C1F	2.56	104.91	100.91
4	B	303	AP5	C8A-N9A-C4A	2.47	108.78	106.90
4	B	303	AP5	C8A-N7A-C5A	2.43	111.10	103.58
4	A	303	AP5	O4J-C4J-C3J	-2.40	100.31	105.17
4	A	303	AP5	O2D-PD-O1D	2.39	125.59	112.21
4	A	303	AP5	N6A-C6A-N1A	2.38	124.03	119.36
4	B	303	AP5	C2B-N1B-C6B	2.36	123.04	118.77
4	B	303	AP5	O2E-PE-O3D	2.35	116.27	105.14
4	B	303	AP5	C8A-N9A-C1F	2.26	130.84	126.38
4	A	303	AP5	C5B-C4B-N9B	-2.14	104.08	107.16
4	B	303	AP5	O2G-PG-O3B	2.12	115.21	105.14
4	B	303	AP5	O2A-PA-O1A	2.09	123.90	112.21
4	B	303	AP5	N7A-C8A-N9A	-2.07	108.49	114.36
4	A	303	AP5	O2D-PD-O3D	-2.02	95.53	105.14
4	A	303	AP5	C8B-N7B-C5B	2.02	109.84	103.58

There are no chirality outliers.

There are no torsion outliers.

There are no ring outliers.

## 5.7 Other polymers ⓘ

There are no such residues in this entry.

## 5.8 Polymer linkage issues

There are no chain breaks in this entry.

## 6 Fit of model and data ⓘ

### 6.1 Protein, DNA and RNA chains ⓘ

In the following table, the column labelled ‘#RSRZ> 2’ contains the number (and percentage) of RSRZ outliers, followed by percent RSRZ outliers for the chain as percentile scores relative to all X-ray entries and entries of similar resolution. The OWAB column contains the minimum, median, 95<sup>th</sup> percentile and maximum values of the occupancy-weighted average B-factor per residue. The column labelled ‘Q< 0.9’ lists the number of (and percentage) of residues with an average occupancy less than 0.9.

Mol	Chain	Analysed	<RSRZ>	#RSRZ>2	OWAB(Å <sup>2</sup> )	Q<0.9
1	A	217/217 (100%)	-0.29	0 100 100	10, 18, 29, 38	0
1	B	217/217 (100%)	-0.32	0 100 100	10, 17, 29, 43	0
All	All	434/434 (100%)	-0.30	0 100 100	10, 18, 29, 43	0

There are no RSRZ outliers to report.

### 6.2 Non-standard residues in protein, DNA, RNA chains ⓘ

There are no non-standard protein/DNA/RNA residues in this entry.

### 6.3 Carbohydrates ⓘ

There are no carbohydrates in this entry.

### 6.4 Ligands ⓘ

In the following table, the Atoms column lists the number of modelled atoms in the group and the number defined in the chemical component dictionary. LLDF column lists the quality of electron density of the group with respect to its neighbouring residues in protein, DNA or RNA chains. The B-factors column lists the minimum, median, 95<sup>th</sup> percentile and maximum values of B factors of atoms in the group. The column labelled ‘Q< 0.9’ lists the number of atoms with occupancy less than 0.9.

Mol	Type	Chain	Res	Atoms	RSR	LLDF	B-factors(Å <sup>2</sup> )	Q<0.9
5	CA	B	305	1/1	0.10	5.50	21,21,21,21	0
3	MG	B	302	1/1	0.17	5.18	4,4,4,4	0
5	CA	A	304	1/1	0.17	4.51	34,34,34,34	0
5	CA	A	306	1/1	0.13	2.65	24,24,24,24	0
3	MG	A	302	1/1	0.12	1.61	6,6,6,6	0

*Continued on next page...*

*Continued from previous page...*

Mol	Type	Chain	Res	Atoms	RSR	LLDF	B-factors( $\text{\AA}^2$ )	Q<0.9
5	CA	A	305	1/1	0.12	0.75	28,28,28,28	0
4	AP5	B	303	57/57	0.07	-0.41	10,12,14,14	0
4	AP5	A	303	57/57	0.06	-0.91	11,13,20,24	0
2	ZN	B	301	1/1	0.04	-1.70	23,23,23,23	0
2	ZN	A	301	1/1	0.03	-1.92	25,25,25,25	0
5	CA	B	307	1/1	0.03	-2.18	13,13,13,13	0
5	CA	B	304	1/1	0.03	-4.67	13,13,13,13	0
5	CA	B	306	1/1	0.02	-5.70	14,14,14,14	0

## 6.5 Other polymers ⓘ

There are no such residues in this entry.