



Full wwPDB X-ray Structure Validation Report

Feb 27, 2014 – 07:49 PM GMT

PDB ID : 1MMF
Title : Crystal structure of substrate free form of glycerol dehydratase
Authors : Liao, D.I.; Dotson, G.; Turner, I.; Reiss, L.; Emptage, M.
Deposited on : 2002-09-03
Resolution : 2.50 Å(reported)

This is a full wwPDB validation report for a publicly released PDB entry.
We welcome your comments at validation@mail.wwpdb.org
A user guide is available at <http://wwpdb.org/ValidationPDFNotes.html>

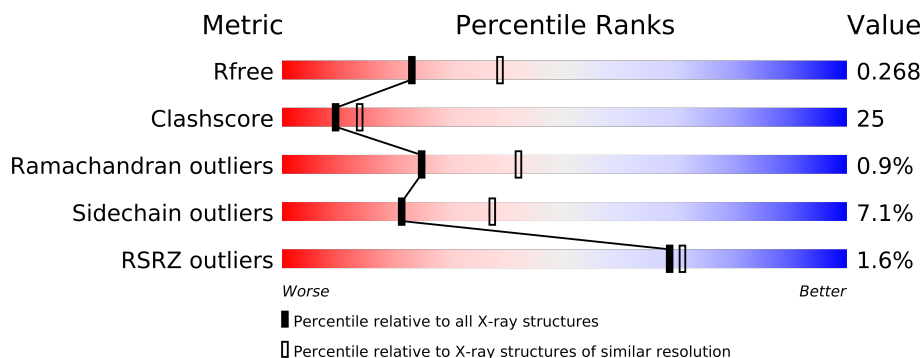
The following versions of software and data (see [references](#)) were used in the production of this report:

MolProbity : 4.02b-467
Mogul : 1.15 2013
Xtriage (Phenix) : dev-1323
EDS : stable22639
Percentile statistics : 21963
Refmac : 5.8.0049
CCP4 : 6.3.0 (Settle)
Ideal geometry (proteins) : Engh & Huber (2001)
Ideal geometry (DNA, RNA) : Parkinson et. al. (1996)
Validation Pipeline (wwPDB-VP) : stable22683

1 Overall quality at a glance

The reported resolution of this entry is 2.50 Å.

Percentile scores (ranging between 0-100) for global validation metrics of the entry are shown in the following graphic. The table shows the number of entries on which the scores are based.



Metric	Whole archive (#Entries)	Similar resolution (#Entries, resolution range(Å))
R_{free}	66092	2784 (2.50-2.50)
Clashscore	79885	3562 (2.50-2.50)
Ramachandran outliers	78287	3480 (2.50-2.50)
Sidechain outliers	78261	3482 (2.50-2.50)
RSRZ outliers	66119	2785 (2.50-2.50)

The table below summarises the geometric issues observed across the polymeric chains and their fit to the electron density. The red, orange, yellow and green segments on the lower bar indicate the fraction of residues that contain outliers for ≥ 3 , 2, 1 and 0 types of geometric quality criteria. The upper red bar (where present) indicates the fraction of residues that have poor fit to the electron density.

Mol	Chain	Length	Quality of chain
1	A	555	
1	L	555	
2	B	194	
2	E	194	
3	G	141	
3	M	141	

2 Entry composition

There are 6 unique types of molecules in this entry. The entry contains 13782 atoms, of which 0 are hydrogen and 0 are deuterium.

In the tables below, the ZeroOcc column contains the number of atoms modelled with zero occupancy, the AltConf column contains the number of residues with at least one atom in alternate conformation and the Trace column contains the number of residues modelled with at most 2 atoms.

- Molecule 1 is a protein called glycerol dehydrase alpha subunit.

Mol	Chain	Residues	Atoms					ZeroOcc	AltConf	Trace
1	A	552	Total	C	N	O	S	0	0	0
			4220	2624	734	832	30			
1	L	555	Total	C	N	O	S	0	0	0
			4245	2639	737	839	30			

- Molecule 2 is a protein called glycerol dehydrase beta subunit.

Mol	Chain	Residues	Atoms					ZeroOcc	AltConf	Trace
2	B	181	Total	C	N	O	S	0	0	0
			1396	883	251	258	4			
2	E	184	Total	C	N	O	S	0	0	0
			1420	897	257	262	4			

There are 2 discrepancies between the modelled and reference sequences:

Chain	Residue	Modelled	Actual	Comment	Reference
B	1	VAL	MET	CONFLICT	UNP O08505
E	1	VAL	MET	CONFLICT	UNP O08505

- Molecule 3 is a protein called glycerol dehydrase gamma subunit.

Mol	Chain	Residues	Atoms					ZeroOcc	AltConf	Trace
3	G	132	Total	C	N	O	S	0	0	0
			1059	662	198	197	2			
3	M	131	Total	C	N	O	S	0	0	0
			1051	658	197	194	2			

- Molecule 4 is POTASSIUM ION (three-letter code: K) (formula: K).

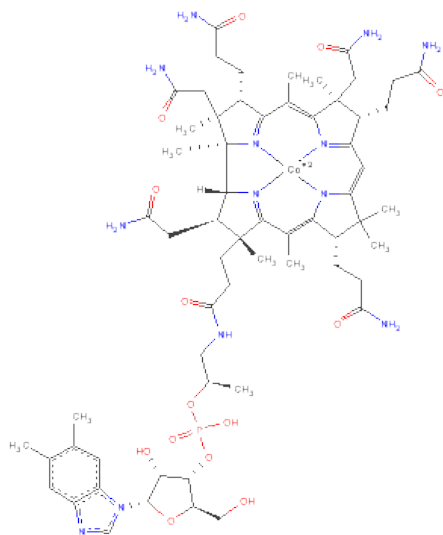
Mol	Chain	Residues	Atoms		ZeroOcc	AltConf
4	A	1	Total	K	0	0
			1	1		

Continued on next page...

Continued from previous page...

Mol	Chain	Residues	Atoms	ZeroOcc	AltConf
4	L	1	Total K 1 1	0	0

- Molecule 5 is COBALAMIN (three-letter code: B12) (formula: $C_{62}H_{89}CoN_{13}O_{14}P$).



Mol	Chain	Residues	Atoms						ZeroOcc	AltConf
5	B	1	Total	C	Co	N	O	P	0	0
			91	62	1	13	14	1		
5	E	1	Total	C	Co	N	O	P	0	0
			91	62	1	13	14	1		

- Molecule 6 is water.

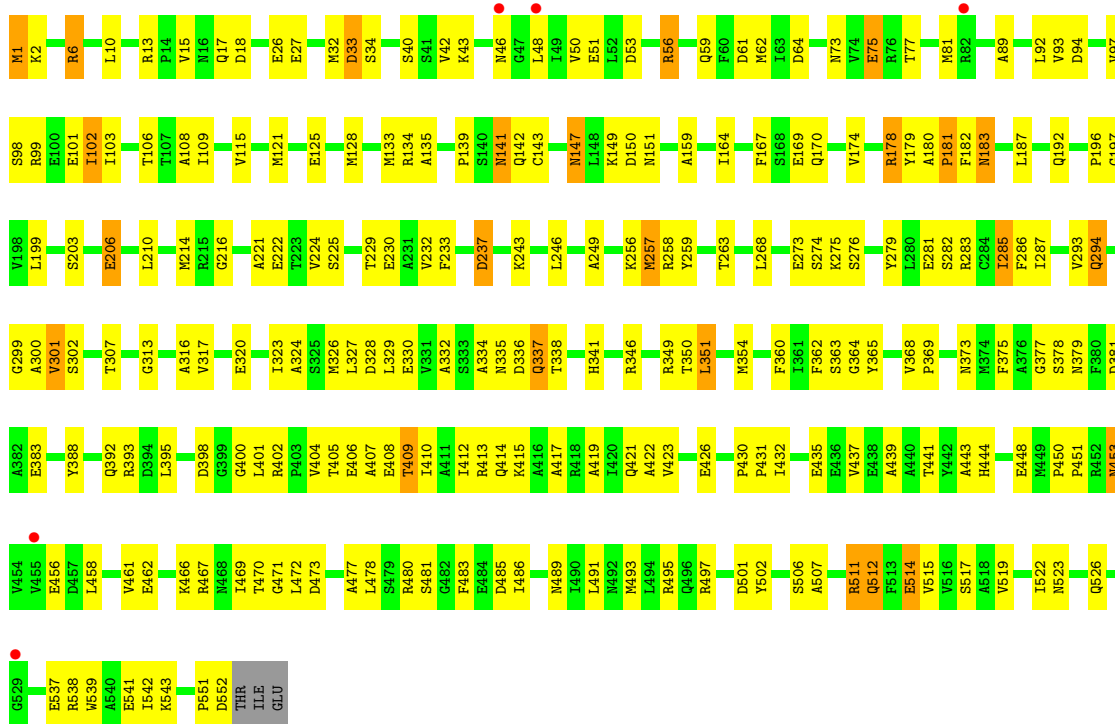
Mol	Chain	Residues	Atoms	ZeroOcc	AltConf
6	A	55	Total O 55 55	0	0
6	B	17	Total O 17 17	0	0
6	E	25	Total O 25 25	0	0
6	G	20	Total O 20 20	0	0
6	L	71	Total O 71 71	0	0
6	M	19	Total O 19 19	0	0

3 Residue-property plots

These plots are drawn for all protein, RNA and DNA chains in the entry. The first graphic for a chain summarises the proportions of errors displayed in the second graphic. The second graphic shows the sequence view annotated by issues in geometry and electron density. Residues are color-coded according to the number of geometric quality criteria for which they contain at least one outlier: green = 0, yellow = 1, orange = 2 and red = 3 or more. A red dot above a residue indicates a poor fit to the electron density ($RSRZ > 2$). Stretches of 2 or more consecutive residues without any outlier are shown as a green connector. Residues present in the sample, but not in the model, are shown in grey.

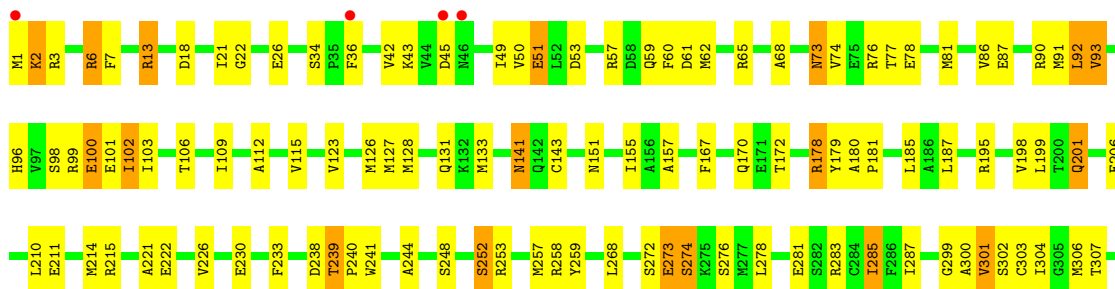
- Molecule 1: glycerol dehydrase alpha subunit

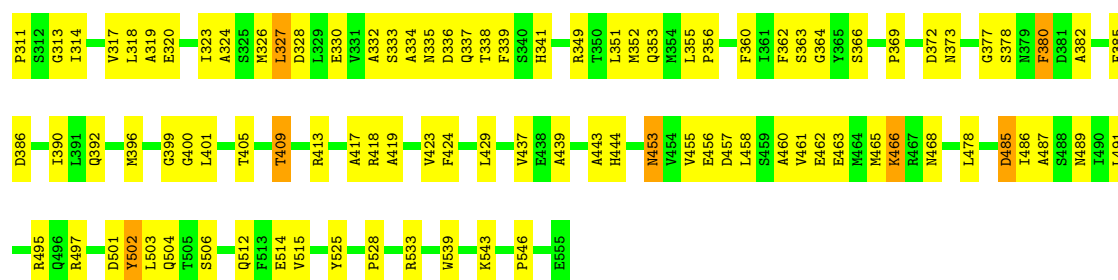
Chain A: 



- Molecule 1: glycerol dehydrase alpha subunit

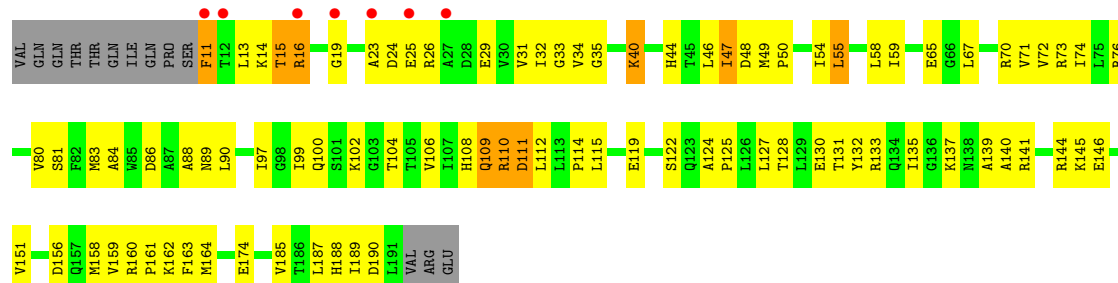
Chain L: 





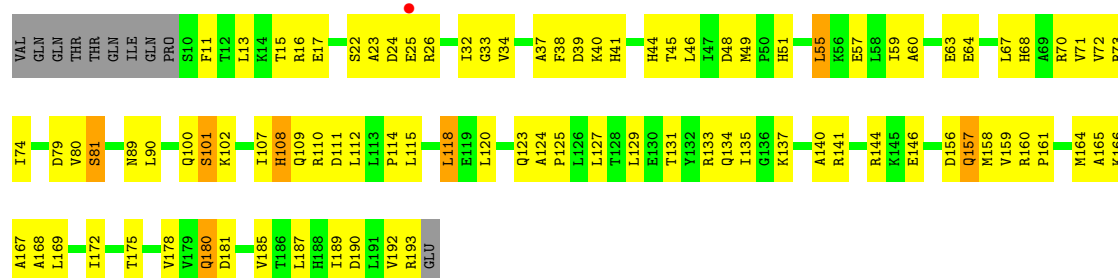
• Molecule 2: glycerol dehydrogenase beta subunit

Chain B:



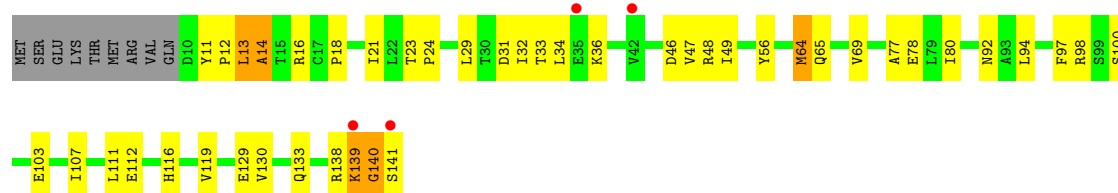
• Molecule 2: glycerol dehydrogenase beta subunit

Chain E:



• Molecule 3: glycerol dehydrogenase gamma subunit

Chain G:



• Molecule 3: glycerol dehydrogenase gamma subunit

Chain M:





4 Data and refinement statistics

Property	Value	Source
Space group	P 1 21 1	Depositor
Cell constants a, b, c, α , β , γ	93.70Å 110.07Å 114.69Å 90.00° 107.64° 90.00°	Depositor
Resolution (Å)	30.00 – 2.50 28.82 – 2.50	Depositor EDS
% Data completeness (in resolution range)	(Not available) (30.00-2.50) 85.1 (28.82-2.50)	Depositor EDS
R_{merge}	0.07	Depositor
R_{sym}	(Not available)	Depositor
$\langle I/\sigma(I) \rangle$ ¹	3.90 (at 2.51Å)	Xtriage
Refinement program	CNS	Depositor
R, R_{free}	0.228 , 0.269 0.226 , 0.268	Depositor DCC
R_{free} test set	3316 reflections (5.35%)	DCC
Wilson B-factor (Å ²)	30.2	Xtriage
Anisotropy	0.998	Xtriage
Bulk solvent k_{sol} (e/Å ³), B_{sol} (Å ²)	0.33 , 29.5	EDS
Estimated twinning fraction	No twinning to report.	Xtriage
L-test for twinning	$\langle L \rangle = 0.59$, $\langle L^2 \rangle = 0.45$	Xtriage
Outliers	4 of 65346 reflections (0.006%)	Xtriage
F_o, F_c correlation	0.93	EDS
Total number of atoms	13782	wwPDB-VP
Average B, all atoms (Å ²)	42.0	wwPDB-VP

Xtriage's analysis on translational NCS is as follows: *The largest off-origin peak in the Patterson function is 5.40% of the height of the origin peak. No significant pseudotranslation is detected.*

¹Intensities estimated from amplitudes.

5 Model quality i

5.1 Standard geometry i

Bond lengths and bond angles in the following residue types are not validated in this section: K, B12

The Z score for a bond length (or angle) is the number of standard deviations the observed value is removed from the expected value. A bond length (or angle) with $|Z| > 5$ is considered an outlier worth inspection. RMSZ is the root-mean-square of all Z scores of the bond lengths (or angles).

Mol	Chain	Bond lengths		Bond angles	
		RMSZ	# Z >5	RMSZ	# Z >5
1	A	0.39	0/4283	0.65	0/5798
1	L	0.48	2/4308 (0.0%)	0.70	5/5831 (0.1%)
2	B	0.45	1/1423 (0.1%)	0.68	1/1928 (0.1%)
2	E	0.38	0/1447	0.68	0/1960
3	G	0.36	0/1079	0.62	0/1462
3	M	0.40	0/1071	0.62	0/1451
All	All	0.42	3/13611 (0.0%)	0.67	6/18430 (0.0%)

Chiral center outliers are detected by calculating the chiral volume of a chiral center and verifying if the center is modelled as a planar moiety or with the opposite hand. A planarity outlier is detected by checking planarity of atoms in a peptide group, atoms in a mainchain group or atoms of a sidechain that are expected to be planar.

Mol	Chain	#Chirality outliers	#Planarity outliers
1	L	0	1

All (3) bond length outliers are listed below:

Mol	Chain	Res	Type	Atoms	Z	Observed(Å)	Ideal(Å)
1	L	380	PHE	CE1-CZ	13.75	1.63	1.37
1	L	380	PHE	CE2-CZ	-5.96	1.26	1.37
2	B	111	ASP	N-CA	-5.03	1.36	1.46

All (6) bond angle outliers are listed below:

Mol	Chain	Res	Type	Atoms	Z	Observed(°)	Ideal(°)
1	L	274	SER	O-C-N	8.50	136.30	122.70
1	L	273	GLU	O-C-N	7.03	133.95	122.70
1	L	380	PHE	CZ-CE2-CD2	5.84	127.11	120.10
1	L	274	SER	CA-C-N	-5.63	104.82	117.20

Continued on next page...

Continued from previous page...

Mol	Chain	Res	Type	Atoms	Z	Observed(°)	Ideal(°)
2	B	110	ARG	C-N-CA	-5.33	108.37	121.70
1	L	273	GLU	CA-C-N	-5.31	105.52	117.20

There are no chirality outliers.

All (1) planarity outliers are listed below:

Mol	Chain	Res	Type	Group
1	L	380	PHE	Sidechain

5.2 Close contacts ⓘ

In the following table, the Non-H and H(model) columns list the number of non-hydrogen atoms and hydrogen atoms in the chain respectively. The H(added) column lists the number of hydrogens added by MolProbity. The Clashes column lists the number of clashes within the asymmetric unit, and the number in parentheses is this value normalized per 1000 atoms of the molecule in the chain. The Symm-Clashes column gives symmetry related clashes, in the same way as for the Clashes column.

Mol	Chain	Non-H	H(model)	H(added)	Clashes	Symm-Clashes
1	A	4220	0	4171	243	0
1	L	4245	0	4195	176	0
2	B	1396	0	1418	97	0
2	E	1420	0	1445	107	0
3	G	1059	0	1061	34	0
3	M	1051	0	1057	46	0
4	A	1	0	0	0	0
4	L	1	0	0	0	0
5	B	91	0	88	5	0
5	E	91	0	87	11	0
6	A	55	0	0	1	0
6	B	17	0	0	1	0
6	E	25	0	0	1	0
6	G	20	0	0	0	0
6	L	71	0	0	3	0
6	M	19	0	0	4	0
All	All	13782	0	13522	666	0

Clashscore is defined as the number of clashes calculated for the entry per 1000 atoms (including hydrogens) of the entry. The overall clashscore for this entry is 25.

All (666) close contacts within the same asymmetric unit are listed below.

Atom-1	Atom-2	Distance(Å)	Clash(Å)
3:M:139:LYS:HD2	3:M:139:LYS:H	1.08	1.06
2:B:16:ARG:HA	2:B:16:ARG:HE	1.19	1.04
1:L:285:ILE:HD12	1:L:324:ALA:HA	1.39	1.02
1:L:272:SER:C	1:L:274:SER:H	1.44	1.01
1:A:285:ILE:HD13	1:A:324:ALA:HA	1.43	0.99
2:B:49:MET:HE3	2:B:54:ILE:HG12	1.43	0.98
2:E:89:ASN:ND2	2:E:110:ARG:HB2	1.78	0.97
3:G:24:PRO:HB3	3:G:80:ILE:HD11	1.42	0.97
1:A:147:ASN:HD21	1:A:151:ASN:H	1.13	0.93
1:A:1:MET:HG3	1:A:2:LYS:N	1.84	0.92
2:E:157:GLN:H	2:E:157:GLN:HE21	1.11	0.92
1:L:272:SER:O	1:L:274:SER:N	2.02	0.92
1:A:470:THR:HG22	1:A:472:LEU:H	1.32	0.92
1:L:272:SER:C	1:L:274:SER:N	2.19	0.90
1:A:1:MET:CG	1:A:2:LYS:H	1.82	0.89
3:G:139:LYS:HD2	3:G:140:GLY:H	1.38	0.89
1:A:511:ARG:HB3	1:A:511:ARG:HH21	1.35	0.89
1:A:1:MET:HG3	1:A:2:LYS:H	1.36	0.89
1:A:551:PRO:HG3	1:L:21:ILE:HB	1.53	0.89
3:G:78:GLU:CD	3:G:119:VAL:HG12	1.94	0.88
3:M:139:LYS:N	3:M:139:LYS:HD2	1.87	0.87
1:A:224:VAL:HG12	1:A:243:LYS:HD2	1.56	0.86
1:L:338:THR:H	2:E:160:ARG:HH21	1.24	0.85
1:L:239:THR:HG22	1:L:241:TRP:H	1.42	0.84
2:E:109:GLN:NE2	2:E:111:ASP:H	1.76	0.83
1:A:373:ASN:HD22	1:A:377:GLY:H	1.25	0.82
2:E:32:ILE:HG13	2:E:32:ILE:O	1.79	0.82
1:A:426:GLU:HG3	1:A:480:ARG:HH21	1.43	0.82
1:A:453:ASN:HD22	1:A:456:GLU:H	1.25	0.82
2:E:124:ALA:HA	2:E:127:LEU:HD23	1.63	0.81
1:A:373:ASN:HD21	1:A:375:PHE:HB2	1.47	0.80
1:A:453:ASN:ND2	1:A:456:GLU:H	1.79	0.80
2:E:160:ARG:HB3	2:E:161:PRO:HD3	1.63	0.80
2:E:60:ALA:O	2:E:64:GLU:HG3	1.80	0.80
1:A:373:ASN:ND2	1:A:377:GLY:H	1.79	0.80
1:A:405:THR:O	1:A:409:THR:HG22	1.82	0.79
3:G:78:GLU:OE2	3:G:119:VAL:HG12	1.83	0.79
2:E:157:GLN:H	2:E:157:GLN:NE2	1.80	0.78
2:E:46:LEU:HD21	2:E:167:ALA:HA	1.65	0.78
1:L:285:ILE:HD11	1:L:327:LEU:HD12	1.65	0.78
1:A:462:GLU:O	1:A:466:LYS:HD3	1.83	0.78
2:E:109:GLN:HE22	2:E:111:ASP:H	1.28	0.77
1:L:306:MET:HG2	2:E:164:MET:HE3	1.65	0.77

Continued on next page...

Continued from previous page...

Atom-1	Atom-2	Distance(Å)	Clash(Å)
1:A:56:ARG:NH2	1:A:59:GLN:HB2	1.99	0.77
1:A:103:ILE:HD12	1:A:328:ASP:HB2	1.65	0.77
1:A:192:GLN:HE22	1:A:197:GLY:H	1.31	0.76
1:A:56:ARG:H	1:A:56:ARG:HH21	1.32	0.76
2:B:35:GLY:HA3	2:B:174:GLU:OE1	1.85	0.76
3:M:129:GLU:HG2	3:M:133:GLN:NE2	2.00	0.76
2:B:23:ALA:HA	2:B:90:LEU:HD12	1.67	0.76
1:A:73:ASN:OD1	1:A:75:GLU:HG3	1.84	0.76
2:B:109:GLN:HG2	2:B:112:LEU:HD13	1.68	0.76
1:A:351:LEU:HD12	1:A:354:MET:HE3	1.66	0.76
3:G:139:LYS:HD2	3:G:140:GLY:N	2.01	0.75
1:L:302:SER:HA	1:L:337:GLN:HG3	1.68	0.74
1:L:306:MET:HG2	2:E:164:MET:CE	2.17	0.73
2:E:175:THR:O	2:E:178:VAL:HG22	1.87	0.73
2:B:80:VAL:HG22	2:B:106:VAL:HG12	1.70	0.73
1:A:332:ALA:HA	1:A:360:PHE:HB2	1.70	0.73
1:A:6:ARG:HD3	1:L:444:HIS:ND1	2.03	0.72
1:L:466:LYS:N	1:L:466:LYS:HE3	2.04	0.72
1:A:302:SER:HA	1:A:337:GLN:HG3	1.70	0.72
1:A:522:ILE:HD12	1:A:522:ILE:H	1.53	0.72
2:E:89:ASN:HD22	2:E:110:ARG:HB2	1.55	0.71
1:A:337:GLN:HA	1:A:337:GLN:HE21	1.56	0.71
1:A:539:TRP:CE2	1:A:543:LYS:HD2	2.24	0.71
1:A:486:ILE:HD12	1:A:486:ILE:H	1.56	0.71
1:A:180:ALA:HB3	1:A:181:PRO:HD3	1.71	0.71
2:E:32:ILE:HD11	2:E:55:LEU:HD21	1.73	0.70
2:B:40:LYS:HD2	2:B:73:ARG:HH22	1.56	0.70
1:L:528:PRO:HA	1:L:533:ARG:NH2	2.06	0.70
1:A:92:LEU:HD21	1:A:102:ILE:HD13	1.72	0.70
1:A:373:ASN:ND2	1:A:375:PHE:H	1.88	0.70
1:L:405:THR:O	1:L:409:THR:HG23	1.91	0.70
2:B:128:THR:HG23	2:B:131:THR:H	1.54	0.70
1:A:368:VAL:CG2	1:A:369:PRO:HD2	2.21	0.70
3:G:138:ARG:HG2	3:G:139:LYS:HG3	1.73	0.69
1:L:180:ALA:HB3	1:L:181:PRO:HD3	1.74	0.69
2:E:168:ALA:O	2:E:172:ILE:HG13	1.92	0.69
1:A:405:THR:HG22	1:A:407:ALA:H	1.57	0.69
1:L:65:ARG:HH12	3:M:133:GLN:HE22	1.39	0.69
1:A:273:GLU:O	1:A:275:LYS:HD2	1.92	0.69
2:B:71:VAL:HG21	2:B:189:ILE:HD11	1.75	0.69
2:B:49:MET:HE3	2:B:54:ILE:CG1	2.22	0.69
1:A:92:LEU:CD2	1:A:102:ILE:HD13	2.23	0.69

Continued on next page...

Continued from previous page...

Atom-1	Atom-2	Distance(Å)	Clash(Å)
2:B:124:ALA:HB3	2:B:125:PRO:HD3	1.73	0.69
3:G:92:ASN:O	3:G:98:ARG:HG3	1.91	0.69
1:L:239:THR:HG22	1:L:241:TRP:N	2.07	0.68
1:A:368:VAL:HG22	1:A:369:PRO:HD2	1.74	0.68
1:L:285:ILE:CD1	1:L:324:ALA:HA	2.19	0.68
1:A:409:THR:HG21	1:L:7:PHE:CE1	2.29	0.68
1:A:99:ARG:O	1:A:103:ILE:HG12	1.93	0.68
2:E:157:GLN:HE21	2:E:157:GLN:N	1.89	0.68
1:L:45:ASP:OD2	1:L:50:VAL:HG21	1.94	0.68
1:A:56:ARG:HH21	1:A:56:ARG:N	1.90	0.68
1:A:141:ASN:ND2	1:A:362:PHE:HB2	2.08	0.67
1:A:102:ILE:HD11	1:A:326:MET:HB2	1.77	0.67
2:E:81:SER:OG	5:E:602:B12:HM62	1.95	0.67
2:E:17:GLU:HG3	2:E:185:VAL:HG11	1.77	0.67
1:L:1:MET:O	1:L:2:LYS:HB2	1.95	0.66
3:M:14:ALA:O	3:M:18:PRO:HG3	1.96	0.66
1:A:56:ARG:HD3	1:A:56:ARG:H	1.60	0.66
1:A:17:GLN:HB2	1:A:341:HIS:CD2	2.31	0.66
2:B:32:ILE:HD11	2:B:71:VAL:HG22	1.77	0.66
2:E:72:VAL:HG12	2:E:73:ARG:N	2.11	0.66
2:E:13:LEU:HD21	2:E:59:ILE:HD12	1.78	0.65
1:A:486:ILE:N	1:A:486:ILE:HD12	2.10	0.65
1:A:141:ASN:HD21	1:A:362:PHE:HB2	1.59	0.65
1:A:77:THR:HG23	1:A:108:ALA:O	1.97	0.65
2:B:49:MET:CE	2:B:54:ILE:HG12	2.23	0.65
1:A:134:ARG:NH1	1:A:139:PRO:HG3	2.12	0.65
1:A:1:MET:CG	1:A:2:LYS:N	2.48	0.64
1:A:346:ARG:HB2	1:A:379:ASN:HD21	1.60	0.64
1:A:26:GLU:O	1:A:274:SER:HB3	1.97	0.64
1:A:337:GLN:NE2	2:B:160:ARG:HH22	1.95	0.64
1:L:201:GLN:NE2	6:L:1014:HOH:O	2.31	0.64
1:L:501:ASP:HB3	1:L:515:VAL:HG21	1.79	0.64
3:G:139:LYS:CD	3:G:140:GLY:H	2.08	0.63
2:E:156:ASP:HB3	2:E:159:VAL:HG23	1.79	0.63
1:A:159:ALA:HB1	1:A:170:GLN:HE22	1.63	0.63
2:B:47:ILE:HG23	2:B:47:ILE:O	1.97	0.63
1:A:539:TRP:NE1	1:A:543:LYS:HD2	2.13	0.63
1:A:18:ASP:OD1	1:A:341:HIS:HD2	1.82	0.63
1:A:56:ARG:CZ	1:A:59:GLN:HB2	2.29	0.63
2:B:83:MET:HE1	2:B:99:ILE:O	1.99	0.63
1:L:285:ILE:HD13	1:L:323:ILE:HG22	1.80	0.63
1:L:332:ALA:HA	1:L:360:PHE:HB2	1.80	0.63

Continued on next page...

Continued from previous page...

Atom-1	Atom-2	Distance(Å)	Clash(Å)
1:A:330:GLU:OE2	1:A:506:SER:HA	1.99	0.62
1:L:18:ASP:OD1	1:L:341:HIS:HD2	1.82	0.62
1:A:300:ALA:HB2	1:A:307:THR:HG21	1.81	0.62
1:A:42:VAL:HG11	1:A:77:THR:HG22	1.80	0.62
5:E:602:B12:H531	5:E:602:B12:H552	1.82	0.62
3:M:129:GLU:HG2	3:M:133:GLN:HE21	1.63	0.62
3:M:11:TYR:N	3:M:12:PRO:CD	2.62	0.62
1:A:336:ASP:O	1:A:378:SER:HA	1.99	0.62
2:B:97:ILE:HD11	2:B:139:ALA:CB	2.29	0.61
1:L:239:THR:CG2	1:L:241:TRP:H	2.12	0.61
1:A:285:ILE:CD1	1:A:324:ALA:HA	2.27	0.61
2:B:156:ASP:HB3	2:B:159:VAL:HG23	1.83	0.61
2:B:109:GLN:CG	2:B:112:LEU:HD13	2.30	0.61
3:G:49:ILE:O	3:G:80:ILE:HD12	2.00	0.61
1:A:40:SER:HA	1:A:53:ASP:OD1	2.00	0.61
1:L:453:ASN:HD22	1:L:453:ASN:C	2.02	0.61
1:L:102:ILE:HD12	1:L:133:MET:HE2	1.83	0.61
3:M:48:ARG:HB3	6:M:148:HOH:O	2.01	0.61
1:A:285:ILE:HD11	1:A:327:LEU:CD2	2.30	0.61
2:E:109:GLN:HE22	2:E:111:ASP:N	1.99	0.60
1:A:491:LEU:O	1:A:495:ARG:HG3	2.01	0.60
1:A:426:GLU:CG	1:A:480:ARG:HH21	2.14	0.60
2:B:127:LEU:N	2:B:127:LEU:HD22	2.16	0.60
1:L:123:VAL:HG11	1:L:352:MET:SD	2.42	0.60
2:E:89:ASN:HD21	2:E:110:ARG:HB2	1.63	0.60
1:L:157:ALA:HB1	1:L:413:ARG:HD3	1.84	0.60
1:A:470:THR:HG22	1:A:472:LEU:N	2.11	0.60
1:L:87:GLU:O	1:L:91:MET:HG3	2.02	0.60
1:A:346:ARG:HB2	1:A:379:ASN:ND2	2.17	0.60
2:B:13:LEU:C	2:B:13:LEU:HD23	2.22	0.60
5:B:601:B12:H473	5:B:601:B12:H491	1.84	0.60
2:E:169:LEU:HA	2:E:172:ILE:HD12	1.82	0.60
3:M:13:LEU:HB3	3:M:21:ILE:HD11	1.83	0.60
2:B:67:LEU:HD11	2:B:144:ARG:HD2	1.83	0.60
1:A:537:GLU:CD	1:A:537:GLU:H	2.06	0.59
3:M:52:GLN:HB2	6:M:147:HOH:O	2.02	0.59
1:A:1:MET:O	1:A:2:LYS:HB3	2.03	0.59
1:A:437:VAL:O	1:A:441:THR:HG23	2.03	0.59
2:B:65:GLU:OE1	2:B:137:LYS:HE2	2.02	0.59
1:A:419:ALA:O	1:A:423:VAL:HG23	2.03	0.59
1:L:528:PRO:HA	1:L:533:ARG:HH22	1.67	0.59
1:L:300:ALA:HB2	1:L:307:THR:HG21	1.83	0.59

Continued on next page...

Continued from previous page...

Atom-1	Atom-2	Distance(Å)	Clash(Å)
2:E:16:ARG:NH1	2:E:190:ASP:OD2	2.36	0.59
2:B:141:ARG:O	2:B:146:GLU:HB2	2.03	0.59
1:L:485:ASP:OD1	1:L:486:ILE:HG13	2.03	0.59
1:A:192:GLN:HE21	1:A:489:ASN:HB3	1.68	0.58
1:L:453:ASN:HD21	1:L:455:VAL:HB	1.69	0.58
1:L:330:GLU:OE2	1:L:506:SER:HA	2.03	0.58
5:B:601:B12:H552	5:B:601:B12:H531	1.85	0.58
1:A:470:THR:CG2	1:A:471:GLY:N	2.65	0.58
2:B:16:ARG:NE	2:B:16:ARG:HA	2.01	0.58
2:B:80:VAL:HG22	2:B:106:VAL:CG1	2.34	0.58
1:A:206:GLU:OE2	1:A:243:LYS:NZ	2.37	0.58
2:B:23:ALA:CA	2:B:90:LEU:HD12	2.33	0.58
1:L:26:GLU:O	1:L:274:SER:OG	2.14	0.57
2:E:123:GLN:HG2	5:E:602:B12:O58	2.04	0.57
3:M:70:ALA:O	3:M:74:ARG:HG2	2.04	0.57
1:A:164:ILE:HG23	1:A:404:VAL:HG11	1.84	0.57
2:E:180:GLN:H	2:E:180:GLN:CD	2.07	0.57
1:A:470:THR:HG22	1:A:471:GLY:N	2.19	0.57
1:A:237:ASP:CG	3:G:98:ARG:HH22	2.07	0.57
1:A:102:ILE:HD11	1:A:133:MET:HE2	1.86	0.57
1:A:341:HIS:CE1	2:B:162:LYS:NZ	2.72	0.57
1:L:501:ASP:CB	1:L:515:VAL:HG21	2.35	0.57
2:B:72:VAL:HG12	2:B:73:ARG:N	2.18	0.57
1:A:210:LEU:O	1:A:214:MET:HG3	2.04	0.57
2:B:74:ILE:HD12	2:B:74:ILE:N	2.19	0.57
1:L:126:MET:CE	1:L:319:ALA:HB2	2.34	0.57
1:L:128:MET:O	1:L:131:GLN:HG2	2.05	0.57
1:L:102:ILE:HD11	1:L:326:MET:HB2	1.87	0.56
1:A:414:GLN:HA	1:A:441:THR:HG22	1.86	0.56
3:M:74:ARG:NH2	6:M:151:HOH:O	2.19	0.56
2:B:16:ARG:HE	2:B:16:ARG:CA	2.02	0.56
1:A:519:VAL:O	1:A:522:ILE:HD11	2.04	0.56
1:L:334:ALA:O	1:L:335:ASN:HB2	2.05	0.56
1:L:334:ALA:HA	1:L:363:SER:OG	2.04	0.56
2:B:67:LEU:HD13	2:B:140:ALA:HB1	1.87	0.56
1:L:98:SER:OG	1:L:101:GLU:HG3	2.06	0.56
1:L:400:GLY:O	1:L:401:LEU:HD12	2.06	0.56
1:A:341:HIS:HE1	2:B:162:LYS:NZ	2.03	0.56
1:A:182:PHE:CD1	1:A:461:VAL:HG22	2.40	0.56
1:L:539:TRP:O	1:L:543:LYS:HG2	2.04	0.56
5:E:602:B12:H351	5:E:602:B12:H362	1.87	0.56
2:E:79:ASP:OD1	2:E:81:SER:HB2	2.05	0.56

Continued on next page...

Continued from previous page...

Atom-1	Atom-2	Distance(Å)	Clash(Å)
3:M:78:GLU:HB2	3:M:120:ASN:ND2	2.21	0.56
1:L:143:CYS:SG	1:L:170:GLN:HG2	2.45	0.56
3:G:129:GLU:O	3:G:133:GLN:HG3	2.05	0.56
1:L:337:GLN:HB3	2:E:160:ARG:CZ	2.36	0.56
1:A:444:HIS:ND1	1:L:6:ARG:HD3	2.21	0.55
1:A:10:LEU:O	1:A:13:ARG:HB2	2.06	0.55
1:L:301:VAL:HG12	1:L:302:SER:N	2.22	0.55
2:E:72:VAL:CG1	2:E:73:ARG:N	2.70	0.55
2:B:84:ALA:HB2	2:B:106:VAL:HG13	1.87	0.55
2:E:37:ALA:HB1	2:E:41:HIS:HB2	1.89	0.55
2:E:16:ARG:NH1	2:E:190:ASP:CG	2.60	0.55
1:A:285:ILE:HD11	1:A:327:LEU:HD22	1.88	0.55
1:L:338:THR:N	2:E:160:ARG:HH21	2.00	0.55
1:L:338:THR:H	2:E:160:ARG:NH2	1.99	0.55
1:A:256:LYS:NZ	1:A:507:ALA:O	2.36	0.55
1:A:395:LEU:HD23	1:L:314:ILE:HB	1.88	0.55
1:A:147:ASN:C	1:A:147:ASN:HD22	2.10	0.55
1:A:56:ARG:HH22	1:A:59:GLN:HB2	1.71	0.55
1:L:172:THR:HG22	1:L:187:LEU:HD22	1.89	0.55
1:L:419:ALA:O	1:L:423:VAL:HG23	2.06	0.55
1:A:552:ASP:OD1	1:A:552:ASP:O	2.25	0.55
1:A:486:ILE:H	1:A:486:ILE:CD1	2.21	0.54
1:A:203:SER:HB3	6:A:1045:HOH:O	2.06	0.54
1:L:353:GLN:O	1:L:356:PRO:HD2	2.06	0.54
1:L:141:ASN:ND2	1:L:362:PHE:HB2	2.23	0.54
1:A:98:SER:OG	1:A:101:GLU:HG3	2.06	0.54
1:L:201:GLN:HE22	1:L:222:GLU:HB3	1.73	0.54
1:L:299:GLY:HA2	1:L:320:GLU:CD	2.28	0.54
2:B:80:VAL:CG2	2:B:106:VAL:HG12	2.37	0.54
1:L:313:GLY:O	1:L:317:VAL:HG23	2.07	0.54
1:A:467:ARG:HB3	1:A:469:ILE:HD13	1.88	0.54
2:B:160:ARG:HB3	2:B:161:PRO:HD3	1.89	0.54
2:B:33:GLY:HA3	2:B:74:ILE:CD1	2.38	0.54
1:L:285:ILE:CD1	1:L:323:ILE:HG22	2.38	0.54
2:E:32:ILE:HD11	2:E:71:VAL:HG22	1.89	0.54
2:E:108:HIS:CD2	2:E:109:GLN:H	2.26	0.54
2:B:29:GLU:OE1	2:B:70:ARG:NE	2.41	0.54
2:B:71:VAL:CG2	2:B:189:ILE:HD11	2.37	0.53
2:B:158:MET:C	2:B:161:PRO:HD2	2.28	0.53
1:L:304:ILE:HG23	1:L:339:PHE:HB3	1.91	0.53
2:E:38:PHE:CE1	2:E:51:HIS:HB3	2.42	0.53
2:B:32:ILE:CD1	2:B:71:VAL:HG22	2.38	0.53

Continued on next page...

Continued from previous page...

Atom-1	Atom-2	Distance(Å)	Clash(Å)
1:L:239:THR:HG23	1:L:240:PRO:HD2	1.91	0.53
1:L:222:GLU:HG3	1:L:258:ARG:HD2	1.90	0.53
5:B:601:B12:H362	5:B:601:B12:H351	1.90	0.53
1:A:56:ARG:H	1:A:56:ARG:CD	2.22	0.53
1:L:6:ARG:HH11	1:L:6:ARG:HB2	1.73	0.53
1:A:102:ILE:HG13	1:A:103:ILE:N	2.22	0.53
2:E:127:LEU:N	2:E:127:LEU:HD22	2.23	0.53
2:E:73:ARG:HB2	2:E:187:LEU:HD11	1.90	0.53
1:L:466:LYS:CA	1:L:466:LYS:HE3	2.38	0.53
1:A:283:ARG:O	1:A:287:ILE:HG13	2.08	0.53
1:L:61:ASP:HB2	1:L:230:GLU:OE2	2.09	0.53
1:L:90:ARG:HB3	1:L:90:ARG:NH1	2.23	0.53
1:A:501:ASP:CB	1:A:515:VAL:HG21	2.39	0.53
1:A:483:PHE:HB3	1:A:486:ILE:HD13	1.92	0.52
1:A:282:SER:O	1:A:286:PHE:HD1	1.92	0.52
1:L:1:MET:HG2	1:L:2:LYS:O	2.09	0.52
1:A:368:VAL:HG22	1:A:369:PRO:CD	2.39	0.52
1:A:143:CYS:HB3	1:A:167:PHE:CD1	2.44	0.52
1:A:495:ARG:NH2	3:G:29:LEU:HG	2.25	0.52
1:A:388:TYR:O	1:A:392:GLN:HG3	2.09	0.52
2:B:80:VAL:HB	2:B:100:GLN:HG3	1.90	0.52
1:A:317:VAL:HA	1:A:320:GLU:OE1	2.09	0.52
3:G:100:SER:HB3	3:G:138:ARG:NH2	2.24	0.52
2:B:19:GLY:O	2:B:185:VAL:HG22	2.08	0.52
3:G:13:LEU:HG	3:G:56:TYR:CE2	2.45	0.52
1:A:421:GLN:HA	1:A:432:ILE:HD12	1.91	0.52
3:G:97:PHE:O	3:G:138:ARG:HA	2.09	0.52
2:E:46:LEU:HG	2:E:102:LYS:HB2	1.91	0.52
1:A:133:MET:HE2	1:A:326:MET:HA	1.91	0.52
1:A:42:VAL:HG11	1:A:81:MET:HG3	1.92	0.52
1:L:178:ARG:HB3	1:L:458:LEU:HD22	1.91	0.52
3:G:14:ALA:O	3:G:18:PRO:HB3	2.09	0.52
1:L:328:ASP:OD2	3:M:66:ARG:HD3	2.10	0.52
2:B:145:LYS:HE2	6:B:616:HOH:O	2.09	0.52
1:A:102:ILE:HG12	1:A:133:MET:HE1	1.92	0.51
1:A:414:GLN:HA	1:A:441:THR:CG2	2.41	0.51
1:L:49:ILE:HD12	1:L:68:ALA:O	2.09	0.51
1:L:491:LEU:O	1:L:495:ARG:HG3	2.10	0.51
1:L:337:GLN:NE2	2:E:160:ARG:HH12	2.08	0.51
2:B:40:LYS:HD2	2:B:73:ARG:NH2	2.23	0.51
2:E:112:LEU:HD11	2:E:118:LEU:HD13	1.92	0.51
3:M:59:GLN:O	3:M:63:GLN:HG3	2.10	0.51

Continued on next page...

Continued from previous page...

Atom-1	Atom-2	Distance(Å)	Clash(Å)
1:L:92:LEU:CD1	1:L:102:ILE:HG13	2.41	0.51
1:A:237:ASP:OD1	3:G:98:ARG:NH2	2.43	0.51
1:L:253:ARG:HG3	3:M:48:ARG:NH1	2.24	0.51
1:L:102:ILE:HD11	1:L:106:THR:HG21	1.92	0.51
2:B:130:GLU:O	2:B:133:ARG:HB3	2.11	0.51
1:L:453:ASN:ND2	1:L:456:GLU:H	2.09	0.51
2:E:34:VAL:HB	2:E:38:PHE:CB	2.41	0.51
1:A:106:THR:O	1:A:109:ILE:HG12	2.11	0.51
3:M:11:TYR:O	3:M:12:PRO:C	2.49	0.51
5:E:602:B12:H491	5:E:602:B12:H473	1.93	0.51
1:L:465:MET:HB2	1:L:466:LYS:NZ	2.25	0.51
1:L:307:THR:O	1:L:313:GLY:HA3	2.11	0.51
1:L:210:LEU:O	1:L:214:MET:HG3	2.11	0.51
1:L:306:MET:N	2:E:164:MET:HE2	2.26	0.51
1:L:65:ARG:NH1	3:M:133:GLN:HE22	2.07	0.51
1:L:462:GLU:O	1:L:466:LYS:HD2	2.11	0.51
2:B:58:LEU:HD23	2:B:132:TYR:O	2.11	0.51
2:B:31:VAL:HG22	2:B:70:ARG:HG3	1.93	0.51
1:L:439:ALA:O	1:L:443:ALA:HB2	2.11	0.51
2:E:158:MET:C	2:E:161:PRO:HD2	2.32	0.50
2:E:38:PHE:O	2:E:73:ARG:NH1	2.44	0.50
3:G:103:GLU:O	3:G:107:ILE:HG13	2.11	0.50
2:E:15:THR:HB	2:E:39:ASP:OD2	2.11	0.50
1:A:426:GLU:HG3	1:A:480:ARG:NH2	2.19	0.50
2:E:127:LEU:HD12	2:E:131:THR:HG21	1.92	0.50
2:E:89:ASN:ND2	2:E:110:ARG:CB	2.65	0.50
1:A:406:GLU:O	1:A:409:THR:HG23	2.10	0.50
2:E:34:VAL:HB	2:E:38:PHE:HB3	1.93	0.50
1:L:1:MET:O	1:L:2:LYS:CB	2.59	0.50
2:B:44:HIS:HB2	2:B:48:ASP:HA	1.92	0.50
1:L:460:ALA:O	1:L:463:GLU:HB2	2.11	0.50
2:B:109:GLN:CD	2:B:111:ASP:H	2.14	0.50
1:A:257:MET:HE3	1:A:293:VAL:HG13	1.94	0.50
1:A:402:ARG:HD2	1:A:541:GLU:OE1	2.12	0.50
1:A:511:ARG:NH2	1:A:511:ARG:HB3	2.15	0.50
2:B:72:VAL:HG12	2:B:73:ARG:H	1.74	0.50
3:M:17:CYS:N	3:M:18:PRO:HD3	2.27	0.50
1:L:170:GLN:NE2	1:L:198:VAL:HG11	2.27	0.50
2:E:108:HIS:HD2	2:E:109:GLN:H	1.59	0.50
2:E:40:LYS:HD2	2:E:73:ARG:NH2	2.27	0.50
1:A:337:GLN:NE2	2:B:160:ARG:NH2	2.59	0.50
2:E:74:ILE:N	2:E:74:ILE:HD12	2.27	0.50

Continued on next page...

Continued from previous page...

Atom-1	Atom-2	Distance(Å)	Clash(Å)
2:E:71:VAL:HG21	2:E:189:ILE:HD11	1.94	0.49
1:L:99:ARG:O	1:L:103:ILE:HG13	2.12	0.49
3:M:47:VAL:O	3:M:47:VAL:HG23	2.11	0.49
1:L:497:ARG:O	3:M:49:ILE:HB	2.12	0.49
1:A:102:ILE:HG12	1:A:133:MET:CE	2.42	0.49
1:A:174:VAL:HG12	1:A:183:ASN:OD1	2.12	0.49
1:A:334:ALA:O	1:A:335:ASN:HB2	2.11	0.49
3:M:51:ARG:HD2	3:M:52:GLN:N	2.27	0.49
1:A:507:ALA:HA	1:A:517:SER:HB3	1.93	0.49
1:L:382:ALA:HA	1:L:385:PHE:CE2	2.48	0.49
3:M:98:ARG:HH11	3:M:98:ARG:HG2	1.77	0.49
1:A:332:ALA:HB1	1:A:363:SER:HB2	1.94	0.49
1:A:373:ASN:ND2	1:A:375:PHE:N	2.60	0.49
1:L:73:ASN:C	1:L:73:ASN:HD22	2.16	0.49
3:G:77:ALA:O	3:G:80:ILE:HG22	2.13	0.49
1:A:511:ARG:HH21	1:A:511:ARG:CB	2.17	0.49
1:A:42:VAL:CG1	1:A:81:MET:HG3	2.42	0.49
1:A:299:GLY:HA2	1:A:320:GLU:CD	2.33	0.49
1:L:115:VAL:HG23	1:L:278:LEU:HD23	1.94	0.49
2:E:100:GLN:NE2	2:E:102:LYS:NZ	2.61	0.48
1:L:369:PRO:HG3	1:L:444:HIS:NE2	2.28	0.48
2:E:26:ARG:HH22	2:E:68:HIS:CE1	2.31	0.48
2:E:124:ALA:HA	2:E:127:LEU:CD2	2.37	0.48
1:A:56:ARG:HD3	1:A:56:ARG:N	2.25	0.48
1:A:102:ILE:HD12	1:A:106:THR:HG21	1.94	0.48
1:A:398:ASP:C	1:A:398:ASP:OD1	2.52	0.48
1:A:147:ASN:HD21	1:A:151:ASN:N	1.96	0.48
1:A:406:GLU:O	1:A:410:ILE:HG13	2.12	0.48
2:E:26:ARG:NH2	2:E:68:HIS:CE1	2.81	0.48
1:A:538:ARG:NH1	1:A:542:ILE:HG13	2.28	0.48
3:G:31:ASP:O	3:G:36:LYS:HD2	2.13	0.48
1:L:226:VAL:HG21	1:L:259:TYR:CD1	2.48	0.48
1:L:151:ASN:O	1:L:155:ILE:HG12	2.12	0.48
1:A:323:ILE:O	1:A:327:LEU:HB2	2.12	0.48
2:E:124:ALA:HB3	2:E:125:PRO:HD3	1.95	0.48
2:B:24:ASP:HB2	2:B:70:ARG:NH1	2.29	0.48
1:A:229:THR:OG1	1:A:232:VAL:HG23	2.13	0.48
1:L:355:LEU:HB2	1:L:356:PRO:HD3	1.96	0.48
1:A:15:VAL:HG22	1:L:390:ILE:HD13	1.95	0.48
1:A:285:ILE:HD12	1:A:329:LEU:HD12	1.96	0.48
1:L:301:VAL:HG12	1:L:302:SER:H	1.79	0.48
1:L:306:MET:N	2:E:164:MET:CE	2.76	0.48

Continued on next page...

Continued from previous page...

Atom-1	Atom-2	Distance(Å)	Clash(Å)
1:L:77:THR:HG23	1:L:78:GLU:N	2.28	0.48
2:E:108:HIS:HE1	2:E:114:PRO:O	1.96	0.48
2:B:100:GLN:HE21	2:B:104:THR:HB	1.77	0.48
2:E:33:GLY:HA3	2:E:74:ILE:HD13	1.95	0.48
1:L:468:ASN:HB3	6:L:1059:HOH:O	2.12	0.48
3:G:23:THR:HB	3:G:24:PRO:HD2	1.95	0.48
2:B:106:VAL:HG23	2:B:119:GLU:O	2.14	0.48
1:L:304:ILE:CG2	1:L:339:PHE:HB3	2.44	0.48
3:M:120:ASN:O	3:M:124:VAL:HG23	2.12	0.48
1:L:333:SER:HB2	1:L:353:GLN:HG2	1.95	0.48
2:B:97:ILE:HD11	2:B:139:ALA:HB2	1.94	0.47
1:L:336:ASP:O	1:L:378:SER:HA	2.15	0.47
1:A:405:THR:HB	1:A:408:GLU:HG3	1.95	0.47
1:L:504:GLN:NE2	3:M:57:GLN:HB3	2.28	0.47
2:E:45:THR:HG22	2:E:101:SER:O	2.13	0.47
1:A:99:ARG:NH2	1:A:135:ALA:HA	2.28	0.47
2:B:16:ARG:HB2	2:B:188:HIS:HB2	1.95	0.47
3:G:139:LYS:NZ	3:G:141:SER:OXT	2.47	0.47
1:A:409:THR:O	1:A:412:ILE:HG22	2.14	0.47
2:E:51:HIS:HE1	2:E:101:SER:HB3	1.79	0.47
1:L:34:SER:HB2	1:L:276:SER:HB3	1.96	0.47
3:G:139:LYS:CG	3:G:140:GLY:H	2.27	0.47
2:E:124:ALA:O	2:E:127:LEU:HD23	2.13	0.47
1:L:299:GLY:N	1:L:320:GLU:OE2	2.45	0.47
3:G:112:GLU:O	3:G:116:HIS:HA	2.15	0.47
2:E:107:ILE:HD11	2:E:135:ILE:HG23	1.96	0.47
3:G:18:PRO:HA	3:G:21:ILE:HG13	1.97	0.47
1:A:301:VAL:HG12	1:A:302:SER:N	2.29	0.47
1:A:180:ALA:HB3	1:A:181:PRO:CD	2.44	0.47
1:A:501:ASP:HB2	1:A:515:VAL:HG21	1.97	0.47
1:A:93:VAL:HG23	1:A:128:MET:HG2	1.97	0.47
1:A:199:LEU:HD23	1:A:493:MET:CE	2.44	0.47
1:L:306:MET:HG2	2:E:164:MET:HE2	1.94	0.47
1:L:86:VAL:O	1:L:90:ARG:HG3	2.15	0.47
2:E:26:ARG:NH2	2:E:68:HIS:ND1	2.62	0.47
1:A:169:GLU:OE2	1:A:258:ARG:NH2	2.43	0.47
2:E:109:GLN:NE2	2:E:111:ASP:N	2.56	0.47
2:B:119:GLU:OE2	2:B:151:VAL:N	2.46	0.47
1:A:467:ARG:HB3	1:A:469:ILE:CD1	2.45	0.47
1:A:393:ARG:NH2	1:L:311:PRO:HD3	2.30	0.47
1:A:313:GLY:O	1:A:316:ALA:HB3	2.14	0.47
1:A:409:THR:O	1:A:413:ARG:HG3	2.15	0.46

Continued on next page...

Continued from previous page...

Atom-1	Atom-2	Distance(Å)	Clash(Å)
1:A:317:VAL:O	1:A:320:GLU:HG2	2.15	0.46
1:A:453:ASN:ND2	1:A:456:GLU:HB2	2.30	0.46
2:B:46:LEU:HG	2:B:102:LYS:HB2	1.96	0.46
1:A:400:GLY:O	1:A:401:LEU:HD23	2.15	0.46
2:E:55:LEU:O	2:E:59:ILE:HG13	2.16	0.46
1:A:351:LEU:HD23	1:L:351:LEU:HD23	1.97	0.46
1:L:283:ARG:O	1:L:287:ILE:HG13	2.15	0.46
3:M:58:ALA:O	3:M:62:GLU:HG3	2.16	0.46
1:A:143:CYS:HB3	1:A:167:PHE:CE1	2.51	0.46
1:A:335:ASN:OD1	1:A:350:THR:HA	2.15	0.46
1:A:147:ASN:ND2	1:A:150:ASP:N	2.64	0.46
1:L:377:GLY:O	2:E:160:ARG:NH2	2.49	0.46
1:L:126:MET:HE1	1:L:319:ALA:HB2	1.97	0.46
1:A:221:ALA:O	1:A:257:MET:HA	2.16	0.46
2:E:67:LEU:N	2:E:67:LEU:HD12	2.31	0.46
2:B:124:ALA:O	2:B:127:LEU:HD23	2.15	0.46
1:L:468:ASN:HD22	1:L:468:ASN:N	2.13	0.46
1:A:422:ALA:HB1	1:A:481:SER:HB3	1.98	0.46
2:B:55:LEU:O	2:B:59:ILE:HG13	2.15	0.46
1:A:381:ASP:OD1	1:A:381:ASP:C	2.52	0.46
2:B:50:PRO:O	2:B:54:ILE:HG13	2.15	0.46
1:L:93:VAL:CG2	1:L:128:MET:HG2	2.46	0.46
3:M:30:THR:HG22	3:M:30:THR:O	2.15	0.46
2:E:13:LEU:HG	2:E:189:ILE:HG23	1.98	0.46
1:A:102:ILE:O	1:A:106:THR:HG23	2.15	0.46
1:A:417:ALA:CB	1:A:437:VAL:HG13	2.45	0.46
1:A:115:VAL:HG21	1:A:279:TYR:HA	1.97	0.46
1:A:294:GLN:C	1:A:294:GLN:NE2	2.69	0.46
2:E:131:THR:O	2:E:135:ILE:HG13	2.16	0.46
1:A:42:VAL:HG22	1:A:43:LYS:N	2.30	0.46
2:E:141:ARG:O	2:E:146:GLU:HB2	2.15	0.46
3:G:78:GLU:OE1	3:G:119:VAL:HG12	2.15	0.45
2:E:102:LYS:HZ1	5:E:602:B12:H5R2	1.81	0.45
1:L:123:VAL:HG13	1:L:318:LEU:CD2	2.45	0.45
2:E:180:GLN:N	2:E:180:GLN:CD	2.70	0.45
1:A:469:ILE:HA	1:A:473:ASP:OD2	2.16	0.45
1:L:221:ALA:O	1:L:257:MET:HA	2.15	0.45
1:A:551:PRO:HG2	1:L:22:GLY:O	2.16	0.45
1:A:341:HIS:CE1	2:B:162:LYS:HZ3	2.34	0.45
2:B:14:LYS:HG2	2:B:15:THR:H	1.81	0.45
2:B:124:ALA:HA	2:B:127:LEU:HD23	1.99	0.45
1:L:201:GLN:NE2	1:L:222:GLU:HB3	2.31	0.45

Continued on next page...

Continued from previous page...

Atom-1	Atom-2	Distance(Å)	Clash(Å)
3:M:20:HIS:O	3:M:22:LEU:HG	2.16	0.45
1:A:281:GLU:HA	1:A:281:GLU:OE2	2.16	0.45
1:A:149:LYS:O	1:A:150:ASP:C	2.55	0.45
1:A:426:GLU:HG2	1:A:477:ALA:HA	1.99	0.45
1:A:351:LEU:HD12	1:A:354:MET:CE	2.42	0.45
3:M:110:GLU:O	3:M:114:THR:HB	2.17	0.45
1:L:418:ARG:HG3	1:L:437:VAL:HG11	1.99	0.45
2:B:89:ASN:OD1	2:B:110:ARG:HB2	2.17	0.45
2:B:127:LEU:N	2:B:127:LEU:CD2	2.79	0.45
3:M:78:GLU:HB2	3:M:120:ASN:HD22	1.80	0.45
1:L:195:ARG:O	1:L:198:VAL:HG23	2.17	0.45
3:M:139:LYS:CD	3:M:139:LYS:H	1.95	0.45
1:L:317:VAL:O	1:L:320:GLU:HG2	2.16	0.45
1:L:100:GLU:H	1:L:100:GLU:CD	2.19	0.45
1:L:323:ILE:O	1:L:327:LEU:HB2	2.16	0.45
1:A:56:ARG:HH22	1:A:59:GLN:CB	2.28	0.45
1:A:46:ASN:O	1:A:48:LEU:HD12	2.17	0.45
2:B:32:ILE:HG22	2:B:97:ILE:HB	1.99	0.45
1:L:244:ALA:HB3	3:M:123:PHE:HZ	1.82	0.45
2:B:25:GLU:HA	2:B:25:GLU:OE1	2.15	0.45
5:E:602:B12:H5R1	5:E:602:B12:O51	2.17	0.45
3:G:64:MET:O	3:G:65:GLN:HB2	2.17	0.45
2:B:109:GLN:OE1	2:B:110:ARG:N	2.50	0.44
1:L:248:SER:O	1:L:252:SER:HB3	2.17	0.44
1:L:366:SER:HB2	1:L:373:ASN:ND2	2.32	0.44
1:A:486:ILE:N	1:A:486:ILE:CD1	2.80	0.44
2:E:44:HIS:HA	2:E:49:MET:O	2.18	0.44
1:A:430:PRO:HA	1:A:431:PRO:HD2	1.88	0.44
1:L:299:GLY:O	1:L:300:ALA:HB3	2.16	0.44
1:L:525:TYR:HB2	6:L:1060:HOH:O	2.17	0.44
1:A:405:THR:HG22	1:A:407:ALA:N	2.29	0.44
1:L:465:MET:C	1:L:466:LYS:HE3	2.37	0.44
1:A:522:ILE:HG22	1:A:523:ASN:O	2.18	0.44
3:M:20:HIS:CE1	3:M:21:ILE:HG12	2.52	0.44
1:A:97:VAL:HG13	1:A:101:GLU:OE2	2.17	0.44
2:B:29:GLU:CD	2:B:70:ARG:HE	2.20	0.44
1:L:366:SER:HB2	1:L:373:ASN:HD22	1.83	0.44
1:L:392:GLN:CD	1:L:399:GLY:H	2.17	0.44
2:B:14:LYS:HG2	2:B:15:THR:N	2.33	0.44
1:L:123:VAL:HG12	1:L:127:MET:CE	2.48	0.44
1:L:112:ALA:HA	1:L:115:VAL:HG12	2.00	0.44
2:E:23:ALA:HA	2:E:90:LEU:HD12	2.00	0.44

Continued on next page...

Continued from previous page...

Atom-1	Atom-2	Distance(Å)	Clash(Å)
1:A:94:ASP:OD2	1:L:96:HIS:NE2	2.51	0.44
2:E:34:VAL:HG22	2:E:72:VAL:O	2.18	0.43
1:L:123:VAL:HG12	1:L:127:MET:HE2	2.00	0.43
2:E:46:LEU:CD2	2:E:166:LYS:HG2	2.48	0.43
1:L:400:GLY:O	1:L:401:LEU:CD1	2.65	0.43
1:L:178:ARG:CB	1:L:458:LEU:HD22	2.47	0.43
3:M:92:ASN:O	3:M:98:ARG:HG3	2.18	0.43
2:E:11:PHE:HB3	2:E:192:VAL:O	2.18	0.43
2:E:120:LEU:CD2	5:E:602:B12:H311	2.48	0.43
1:A:263:THR:HG23	1:A:320:GLU:CD	2.38	0.43
1:L:281:GLU:HA	1:L:281:GLU:OE1	2.18	0.43
2:E:22:SER:O	2:E:70:ARG:NH2	2.52	0.43
1:A:92:LEU:HD21	1:A:102:ILE:CD1	2.43	0.43
1:A:368:VAL:HG23	1:A:369:PRO:HD2	1.99	0.43
1:L:143:CYS:HB3	1:L:167:PHE:CD1	2.54	0.43
1:L:42:VAL:HA	1:L:51:GLU:O	2.18	0.43
2:E:193:ARG:HG2	2:E:193:ARG:HH11	1.82	0.43
1:L:285:ILE:HD12	1:L:324:ALA:CA	2.29	0.43
1:A:246:LEU:O	1:A:249:ALA:HB3	2.19	0.43
1:A:426:GLU:CG	1:A:480:ARG:NH2	2.81	0.43
2:E:74:ILE:N	2:E:74:ILE:CD1	2.82	0.43
2:B:34:VAL:HG12	2:B:99:ILE:CG2	2.49	0.43
3:M:95:ARG:HB3	3:M:98:ARG:NH1	2.33	0.43
1:A:93:VAL:HG23	1:A:128:MET:CG	2.48	0.43
1:L:323:ILE:HA	1:L:326:MET:HG2	2.01	0.43
2:E:51:HIS:CE1	2:E:101:SER:HB3	2.54	0.43
1:L:181:PRO:HB2	1:L:461:VAL:HG13	2.00	0.43
1:L:478:LEU:HB2	1:L:487:ALA:HB2	2.00	0.43
3:M:97:PHE:O	3:M:138:ARG:HA	2.18	0.43
1:A:415:LYS:HE2	1:A:486:ILE:HD11	2.01	0.43
1:A:199:LEU:HD23	1:A:493:MET:HE1	2.01	0.43
1:A:147:ASN:C	1:A:147:ASN:ND2	2.72	0.43
2:E:72:VAL:CG1	2:E:73:ARG:H	2.31	0.43
1:A:180:ALA:O	1:A:181:PRO:C	2.56	0.43
2:E:44:HIS:HB3	2:E:48:ASP:HA	2.00	0.43
2:E:24:ASP:OD2	2:E:26:ARG:HB2	2.19	0.43
3:G:33:THR:HG22	3:G:34:LEU:N	2.33	0.43
1:L:43:LYS:HA	1:L:43:LYS:HD2	1.85	0.43
2:E:127:LEU:H	2:E:127:LEU:HD22	1.82	0.42
1:A:56:ARG:NH1	1:A:59:GLN:HB2	2.33	0.42
1:A:6:ARG:NH1	1:L:444:HIS:O	2.52	0.42
1:L:18:ASP:OD1	1:L:341:HIS:CD2	2.69	0.42

Continued on next page...

Continued from previous page...

Atom-1	Atom-2	Distance(Å)	Clash(Å)
2:B:11:PHE:CD2	2:B:11:PHE:N	2.87	0.42
1:A:439:ALA:HB1	1:A:448:GLU:O	2.18	0.42
1:A:522:ILE:N	1:A:522:ILE:HD12	2.27	0.42
2:B:33:GLY:HA3	2:B:74:ILE:HD13	2.00	0.42
1:A:279:TYR:O	1:A:282:SER:HB3	2.19	0.42
2:B:84:ALA:CB	2:B:106:VAL:HG13	2.49	0.42
1:A:6:ARG:HD3	1:L:444:HIS:CE1	2.53	0.42
2:B:115:LEU:HD13	5:B:601:B12:H412	2.02	0.42
2:E:180:GLN:HB2	2:E:181:ASP:H	1.64	0.42
2:B:74:ILE:CD1	2:B:74:ILE:N	2.82	0.42
1:A:216:GLY:HA2	1:A:497:ARG:NH2	2.33	0.42
1:A:149:LYS:C	1:A:151:ASN:N	2.70	0.42
2:E:32:ILE:CD1	2:E:71:VAL:HG22	2.49	0.42
1:L:303:CYS:HA	2:E:164:MET:CE	2.49	0.42
3:M:20:HIS:ND1	3:M:20:HIS:C	2.70	0.42
3:M:120:ASN:O	3:M:123:PHE:HB3	2.20	0.42
1:A:27:GLU:HA	1:A:27:GLU:OE1	2.19	0.42
1:A:539:TRP:CD1	1:A:543:LYS:HD2	2.54	0.42
1:A:143:CYS:SG	1:A:170:GLN:HG2	2.59	0.42
1:L:62:MET:HG2	3:M:130:VAL:CG1	2.50	0.42
1:A:178:ARG:CB	1:A:458:LEU:HD22	2.49	0.42
1:L:57:ARG:HG3	1:L:60:PHE:CD1	2.54	0.42
1:L:424:PHE:CD2	1:L:429:LEU:HB2	2.54	0.42
2:B:16:ARG:HG3	2:B:190:ASP:OD1	2.20	0.42
2:B:35:GLY:N	2:B:83:MET:HE1	2.34	0.42
2:B:86:ASP:O	2:B:90:LEU:HB2	2.20	0.42
2:B:47:ILE:CG2	2:B:47:ILE:O	2.67	0.42
1:A:501:ASP:HB3	1:A:515:VAL:HG21	2.01	0.42
1:A:61:ASP:H	1:A:64:ASP:HB2	1.85	0.42
1:A:522:ILE:CD1	1:A:522:ILE:H	2.28	0.42
1:L:42:VAL:CG1	1:L:81:MET:HG3	2.49	0.42
1:L:57:ARG:HG3	1:L:60:PHE:CE1	2.55	0.42
1:L:239:THR:HG21	3:M:131:TYR:CE1	2.55	0.42
2:E:100:GLN:HE22	2:E:102:LYS:HZ1	1.68	0.42
1:A:192:GLN:NE2	1:A:196:PRO:HA	2.35	0.42
2:B:24:ASP:OD2	2:B:26:ARG:CB	2.68	0.42
1:A:178:ARG:HB2	1:A:458:LEU:HD22	2.02	0.42
3:G:11:TYR:CE1	3:G:12:PRO:HG3	2.54	0.42
1:L:106:THR:O	1:L:109:ILE:HG12	2.20	0.41
1:A:206:GLU:HG3	1:A:246:LEU:HD21	2.02	0.41
2:E:45:THR:HB	2:E:102:LYS:O	2.20	0.41
2:E:80:VAL:HB	2:E:100:GLN:CG	2.50	0.41

Continued on next page...

Continued from previous page...

Atom-1	Atom-2	Distance(Å)	Clash(Å)
1:L:353:GLN:C	1:L:356:PRO:HD2	2.41	0.41
1:A:439:ALA:O	1:A:443:ALA:HB2	2.20	0.41
1:L:502:TYR:C	1:L:502:TYR:CD1	2.94	0.41
1:A:268:LEU:HD12	1:A:268:LEU:O	2.20	0.41
2:E:120:LEU:HD23	5:E:602:B12:H311	2.01	0.41
2:E:137:LYS:HB3	2:E:137:LYS:HE3	1.87	0.41
1:A:1:MET:O	1:A:2:LYS:CB	2.68	0.41
1:A:373:ASN:ND2	1:A:377:GLY:N	2.58	0.41
2:B:122:SER:HB2	5:B:601:B12:O7R	2.21	0.41
1:L:396:MET:HE2	1:L:539:TRP:CE2	2.55	0.41
2:B:163:PHE:O	2:B:164:MET:C	2.59	0.41
2:B:76:ARG:NE	2:B:86:ASP:OD2	2.50	0.41
3:M:11:TYR:N	3:M:12:PRO:HD3	2.35	0.41
3:M:78:GLU:HB3	3:M:117:ALA:HA	2.02	0.41
3:G:31:ASP:O	3:G:33:THR:N	2.50	0.41
2:E:165:ALA:HB3	6:E:615:HOH:O	2.21	0.41
2:E:140:ALA:O	2:E:144:ARG:HG3	2.19	0.41
1:A:383:GLU:O	1:L:13:ARG:CZ	2.68	0.41
1:L:300:ALA:HB1	1:L:304:ILE:HA	2.01	0.41
3:M:74:ARG:NH1	6:M:151:HOH:O	2.48	0.41
1:A:34:SER:HB2	1:A:276:SER:HB3	2.03	0.41
1:A:225:SER:O	1:A:243:LYS:HE3	2.21	0.41
1:A:206:GLU:HG3	1:A:246:LEU:CD2	2.49	0.41
5:E:602:B12:H291	5:E:602:B12:H91	1.86	0.41
1:A:56:ARG:NH2	1:A:56:ARG:H	2.07	0.41
1:A:42:VAL:HG21	1:A:77:THR:HG21	2.03	0.41
2:B:24:ASP:O	2:B:25:GLU:OE1	2.39	0.41
1:A:93:VAL:CG2	1:A:128:MET:HG2	2.50	0.41
2:E:57:GLU:HG3	2:E:129:LEU:HB3	2.02	0.41
3:M:138:ARG:O	3:M:139:LYS:C	2.57	0.41
1:A:92:LEU:HD23	1:A:102:ILE:HD13	1.99	0.41
2:B:131:THR:O	2:B:135:ILE:HG13	2.20	0.41
1:L:457:ASP:O	1:L:461:VAL:HG23	2.20	0.41
1:L:332:ALA:HB1	1:L:363:SER:HB3	2.02	0.41
1:A:147:ASN:HD22	1:A:149:LYS:N	2.18	0.41
2:B:88:ALA:C	2:B:90:LEU:H	2.24	0.41
3:M:20:HIS:CE1	3:M:56:TYR:HE1	2.39	0.41
1:A:229:THR:HG1	1:A:232:VAL:HG23	1.85	0.41
2:B:16:ARG:O	2:B:187:LEU:HA	2.21	0.41
1:A:478:LEU:HD13	1:A:486:ILE:HB	2.03	0.41
1:A:341:HIS:CE1	2:B:162:LYS:HZ1	2.37	0.41
1:L:62:MET:HE2	1:L:230:GLU:HG2	2.03	0.41

Continued on next page...

Continued from previous page...

Atom-1	Atom-2	Distance(Å)	Clash(Å)
1:L:417:ALA:CB	1:L:437:VAL:HG13	2.51	0.41
1:A:89:ALA:O	1:A:92:LEU:HB2	2.21	0.41
1:A:237:ASP:CG	3:G:98:ARG:NH2	2.73	0.41
2:B:67:LEU:HD12	2:B:67:LEU:N	2.36	0.41
1:A:450:PRO:HA	1:A:451:PRO:HD3	1.88	0.41
1:A:121:MET:HA	1:A:125:GLU:OE2	2.21	0.41
1:L:36:PHE:HB2	1:L:274:SER:O	2.21	0.40
2:E:120:LEU:HD13	5:E:602:B12:HM63	2.03	0.40
2:B:109:GLN:HG3	2:B:109:GLN:O	2.21	0.40
1:A:13:ARG:HA	1:A:13:ARG:HD3	1.86	0.40
3:G:46:ASP:O	3:G:48:ARG:N	2.52	0.40
1:A:62:MET:HG2	3:G:130:VAL:CG1	2.51	0.40
1:A:512:GLN:HB2	1:A:514:GLU:OE2	2.20	0.40
3:G:138:ARG:O	3:G:139:LYS:C	2.58	0.40
1:A:332:ALA:HB1	1:A:363:SER:CB	2.51	0.40
2:B:33:GLY:HA3	2:B:74:ILE:HD11	2.03	0.40
1:L:53:ASP:OD1	1:L:112:ALA:HB3	2.22	0.40
1:A:62:MET:HG3	1:A:230:GLU:OE2	2.21	0.40
1:A:50:VAL:HG22	1:A:50:VAL:O	2.22	0.40
2:B:71:VAL:HG12	2:B:187:LEU:HD12	2.03	0.40
2:B:16:ARG:CB	2:B:188:HIS:HB2	2.51	0.40
1:L:239:THR:HG23	1:L:240:PRO:CD	2.50	0.40
1:A:170:GLN:HE21	1:A:187:LEU:HD11	1.85	0.40
1:A:259:TYR:CZ	1:A:293:VAL:HG21	2.56	0.40
3:M:27:LYS:HA	3:M:28:PRO:HD3	1.94	0.40
1:A:32:MET:O	1:A:33:ASP:C	2.60	0.40
1:L:211:GLU:O	1:L:215:ARG:HG3	2.22	0.40
1:A:301:VAL:HG12	1:A:302:SER:H	1.86	0.40
2:B:108:HIS:HE1	2:B:114:PRO:O	2.04	0.40
2:E:13:LEU:HD12	2:E:13:LEU:N	2.37	0.40
1:A:462:GLU:HG2	1:A:466:LYS:HE3	2.02	0.40
1:A:517:SER:C	1:A:519:VAL:H	2.24	0.40
1:L:486:ILE:HA	1:L:489:ASN:HD22	1.86	0.40
2:E:37:ALA:CB	2:E:41:HIS:HB2	2.50	0.40
1:L:49:ILE:HG13	1:L:74:VAL:HG12	2.04	0.40

There are no symmetry-related clashes.

5.3 Torsion angles

5.3.1 Protein backbone ⓘ

In the following table, the Percentiles column shows the percent Ramachandran outliers of the chain as a percentile score with respect to all X-ray entries followed by that with respect to entries of similar resolution. The Analysed column shows the number of residues for which the backbone conformation was analysed, and the total number of residues.

Mol	Chain	Analysed	Favoured	Allowed	Outliers	Percentiles	
1	A	550/555 (99%)	499 (91%)	47 (8%)	4 (1%)	30	50
1	L	553/555 (100%)	504 (91%)	45 (8%)	4 (1%)	30	50
2	B	179/194 (92%)	162 (90%)	16 (9%)	1 (1%)	33	55
2	E	182/194 (94%)	165 (91%)	16 (9%)	1 (0%)	38	60
3	G	130/141 (92%)	120 (92%)	5 (4%)	5 (4%)	5	6
3	M	129/141 (92%)	116 (90%)	12 (9%)	1 (1%)	27	46
All	All	1723/1780 (97%)	1566 (91%)	141 (8%)	16 (1%)	25	42

All (16) Ramachandran outliers are listed below:

Mol	Chain	Res	Type
3	G	139	LYS
1	L	273	GLU
2	E	180	GLN
1	A	364	GLY
1	L	178	ARG
3	M	139	LYS
1	A	178	ARG
2	B	40	LYS
1	L	364	GLY
1	A	33	ASP
3	G	14	ALA
1	A	301	VAL
1	L	301	VAL
3	G	32	ILE
3	G	47	VAL
3	G	140	GLY

5.3.2 Protein sidechains ⓘ

In the following table, the Percentiles column shows the percent sidechain outliers of the chain as a percentile score with respect to all X-ray entries followed by that with respect to entries of

similar resolution. The Analysed column shows the number of residues for which the sidechain conformation was analysed, and the total number of residues.

Mol	Chain	Analysed	Rotameric	Outliers	Percentiles	
1	A	450/453 (99%)	417 (93%)	33 (7%)	20	36
1	L	453/453 (100%)	416 (92%)	37 (8%)	17	29
2	B	150/163 (92%)	143 (95%)	7 (5%)	36	61
2	E	153/163 (94%)	142 (93%)	11 (7%)	21	36
3	G	111/120 (92%)	105 (95%)	6 (5%)	31	53
3	M	110/120 (92%)	102 (93%)	8 (7%)	20	36
All	All	1427/1472 (97%)	1325 (93%)	102 (7%)	21	37

All (102) residues with a non-rotameric sidechain are listed below:

Mol	Chain	Res	Type
1	A	1	MET
1	A	6	ARG
1	A	51	GLU
1	A	56	ARG
1	A	75	GLU
1	A	102	ILE
1	A	141	ASN
1	A	142	GLN
1	A	147	ASN
1	A	179	TYR
1	A	181	PRO
1	A	183	ASN
1	A	206	GLU
1	A	222	GLU
1	A	233	PHE
1	A	237	ASP
1	A	257	MET
1	A	285	ILE
1	A	294	GLN
1	A	337	GLN
1	A	338	THR
1	A	349	ARG
1	A	351	LEU
1	A	365	TYR
1	A	409	THR
1	A	435	GLU
1	A	453	ASN

Continued on next page...

Continued from previous page...

Mol	Chain	Res	Type
1	A	485	ASP
1	A	502	TYR
1	A	511	ARG
1	A	512	GLN
1	A	514	GLU
1	A	526	GLN
2	B	11	PHE
2	B	15	THR
2	B	16	ARG
2	B	47	ILE
2	B	55	LEU
2	B	81	SER
2	B	109	GLN
3	G	13	LEU
3	G	16	ARG
3	G	64	MET
3	G	69	VAL
3	G	94	LEU
3	G	111	LEU
1	L	2	LYS
1	L	3	ARG
1	L	6	ARG
1	L	13	ARG
1	L	51	GLU
1	L	59	GLN
1	L	73	ASN
1	L	76	ARG
1	L	92	LEU
1	L	93	VAL
1	L	100	GLU
1	L	102	ILE
1	L	141	ASN
1	L	179	TYR
1	L	185	LEU
1	L	199	LEU
1	L	201	GLN
1	L	206	GLU
1	L	233	PHE
1	L	238	ASP
1	L	239	THR
1	L	252	SER
1	L	268	LEU

Continued on next page...

Continued from previous page...

Mol	Chain	Res	Type
1	L	285	ILE
1	L	327	LEU
1	L	349	ARG
1	L	372	ASP
1	L	386	ASP
1	L	409	THR
1	L	453	ASN
1	L	466	LYS
1	L	485	ASP
1	L	502	TYR
1	L	503	LEU
1	L	512	GLN
1	L	514	GLU
1	L	546	PRO
2	E	25	GLU
2	E	55	LEU
2	E	63	GLU
2	E	81	SER
2	E	101	SER
2	E	108	HIS
2	E	115	LEU
2	E	118	LEU
2	E	133	ARG
2	E	134	GLN
2	E	157	GLN
3	M	20	HIS
3	M	31	ASP
3	M	41	GLU
3	M	51	ARG
3	M	64	MET
3	M	74	ARG
3	M	132	GLN
3	M	139	LYS

Some sidechains can be flipped to improve hydrogen bonding and reduce clashes. All (48) such sidechains are listed below:

Mol	Chain	Res	Type
1	A	12	GLN
1	A	16	ASN
1	A	79	GLN
1	A	120	GLN
1	A	141	ASN

Continued on next page...

Continued from previous page...

Mol	Chain	Res	Type
1	A	147	ASN
1	A	154	GLN
1	A	170	GLN
1	A	192	GLN
1	A	201	GLN
1	A	294	GLN
1	A	321	ASN
1	A	337	GLN
1	A	341	HIS
1	A	373	ASN
1	A	379	ASN
1	A	447	ASN
1	A	453	ASN
1	A	468	ASN
1	A	489	ASN
1	A	512	GLN
1	A	526	GLN
2	B	42	GLN
2	B	100	GLN
2	B	108	HIS
3	G	59	GLN
1	L	46	ASN
1	L	59	GLN
1	L	141	ASN
1	L	201	GLN
1	L	337	GLN
1	L	341	HIS
1	L	453	ASN
1	L	468	ASN
1	L	489	ASN
1	L	504	GLN
1	L	512	GLN
1	L	544	ASN
2	E	89	ASN
2	E	100	GLN
2	E	108	HIS
2	E	109	GLN
2	E	134	GLN
2	E	157	GLN
3	M	59	GLN
3	M	120	ASN
3	M	132	GLN

Continued on next page...

Continued from previous page...

Mol	Chain	Res	Type
3	M	133	GLN

5.3.3 RNA ⓘ

There are no RNA chains in this entry.

5.4 Non-standard residues in protein, DNA, RNA chains ⓘ

There are no non-standard protein/DNA/RNA residues in this entry.

5.5 Carbohydrates ⓘ

There are no carbohydrates in this entry.

5.6 Ligand geometry ⓘ

Of 4 ligands modelled in this entry, 2 are monoatomic - leaving 2 for Mogul analysis.

In the following table, the Counts columns list the number of bonds (or angles) for which Mogul statistics could be retrieved, the number of bonds (or angles) that are observed in the model and the number of bonds (or angles) that are defined in the chemical component dictionary. The Link column lists molecule types, if any, to which the group is linked. The Z score for a bond length (or angle) is the number of standard deviations the observed value is removed from the expected value. A bond length (or angle) with $|Z| > 2$ is considered an outlier worth inspection. RMSZ is the root-mean-square of all Z scores of the bond lengths (or angles).

Mol	Type	Chain	Res	Link	Bond lengths			Bond angles		
					Counts	RMSZ	$\# Z > 2$	Counts	RMSZ	$\# Z > 2$
5	B12	B	601	-	101,101,101	6.10	26 (25%)	152,166,166	1.83	35 (23%)
5	B12	E	602	-	101,101,101	6.11	24 (23%)	152,166,166	1.81	36 (23%)

In the following table, the Chirals column lists the number of chiral outliers, the number of chiral centers analysed, the number of these observed in the model and the number defined in the chemical component dictionary. Similar counts are reported in the Torsion and Rings columns. '-' means no outliers of that kind were identified.

Mol	Type	Chain	Res	Link	Chirals	Torsions	Rings
5	B12	B	601	-	-	0/56/223/223	0/1/11/11
5	B12	E	602	-	-	0/56/223/223	0/1/11/11

All (50) bond length outliers are listed below:

Mol	Chain	Res	Type	Atoms	Z	Observed(Å)	Ideal(Å)
5	E	602	B12	CO-N21	58.29	1.91	1.79
5	B	601	B12	CO-N21	57.82	1.91	1.79
5	B	601	B12	CO-N24	-9.91	1.77	1.79
5	E	602	B12	CO-N24	-7.70	1.77	1.79
5	B	601	B12	C1-N21	5.75	1.55	1.50
5	E	602	B12	C1-N21	5.30	1.55	1.50
5	B	601	B12	C41-C8	5.10	1.62	1.53
5	B	601	B12	C19-N24	4.61	1.54	1.48
5	E	602	B12	C11-C10	-4.41	1.33	1.41
5	E	602	B12	C30-C3	4.38	1.60	1.53
5	E	602	B12	C3-C4	4.32	1.61	1.52
5	E	602	B12	C41-C8	4.04	1.60	1.53
5	B	601	B12	C11-C10	-4.03	1.34	1.41
5	B	601	B12	C7-C6	3.80	1.62	1.52
5	B	601	B12	C30-C3	3.70	1.59	1.53
5	E	602	B12	C19-N24	3.62	1.53	1.48
5	B	601	B12	O58-C57	3.55	1.31	1.23
5	E	602	B12	C7-C6	3.50	1.61	1.52
5	E	602	B12	C17-C18	3.23	1.61	1.55
5	E	602	B12	CO-N22	3.00	2.05	1.92
5	E	602	B12	O58-C57	2.98	1.29	1.23
5	B	601	B12	CO-N22	2.97	2.04	1.92
5	E	602	B12	C16-N24	2.80	1.38	1.31
5	B	601	B12	C17-C18	2.79	1.60	1.55
5	B	601	B12	C46-C12	2.76	1.59	1.54
5	E	602	B12	C8B-N1B	-2.69	1.35	1.39
5	B	601	B12	C48-C49	2.68	1.61	1.52
5	E	602	B12	CO-N23	-2.64	1.81	1.92
5	E	602	B12	C46-C12	2.60	1.59	1.54
5	B	601	B12	C48-C13	2.59	1.58	1.53
5	B	601	B12	CO-N23	-2.58	1.82	1.92
5	B	601	B12	C17-C16	2.55	1.58	1.52
5	E	602	B12	O7R-C2R	-2.50	1.36	1.43
5	E	602	B12	C54-C17	2.46	1.58	1.54
5	B	601	B12	C8B-N1B	-2.45	1.36	1.39
5	B	601	B12	C4B-C9B	2.40	1.44	1.41
5	B	601	B12	C7B-C6B	2.38	1.44	1.37
5	B	601	B12	C54-C17	2.34	1.57	1.54
5	B	601	B12	O7R-C2R	-2.33	1.37	1.43
5	B	601	B12	C16-N24	2.30	1.37	1.31
5	E	602	B12	P-O5	-2.24	1.45	1.55
5	E	602	B12	C48-C49	2.21	1.60	1.52

Continued on next page...

Continued from previous page...

Mol	Chain	Res	Type	Atoms	Z	Observed(Å)	Ideal(Å)
5	B	601	B12	C13-C14	2.14	1.56	1.52
5	B	601	B12	P-O5	-2.12	1.45	1.55
5	E	602	B12	C13-C14	2.12	1.56	1.52
5	B	601	B12	C6B-C5B	2.07	1.46	1.40
5	E	602	B12	C6B-C5B	2.06	1.46	1.40
5	E	602	B12	C14-N23	2.03	1.43	1.34
5	B	601	B12	C3-C4	2.00	1.56	1.52
5	E	602	B12	C2R-C1R	2.00	1.56	1.53

All (71) bond angle outliers are listed below:

Mol	Chain	Res	Type	Atoms	Z	Observed(°)	Ideal(°)
5	B	601	B12	O58-C57-C56	-5.46	111.06	121.92
5	E	602	B12	O58-C57-C56	-5.38	111.22	121.92
5	E	602	B12	C19-N24-C16	-5.28	106.26	109.08
5	B	601	B12	C19-N24-C16	-5.16	106.32	109.08
5	B	601	B12	C2B-N1B-C1R	-4.80	116.93	126.38
5	B	601	B12	C7B-C8B-N1B	4.75	138.63	131.80
5	B	601	B12	C26-C2-C1	4.69	117.19	110.04
5	E	602	B12	C2B-N1B-C1R	-4.62	117.28	126.38
5	E	602	B12	C7B-C8B-N1B	4.39	138.12	131.80
5	B	601	B12	C7B-C8B-C9B	-4.25	116.34	120.54
5	E	602	B12	O5-P-O2	4.22	123.46	105.71
5	B	601	B12	C1R-N1B-C8B	4.21	132.61	125.85
5	E	602	B12	C4R-O6R-C1R	-4.18	105.21	109.75
5	B	601	B12	O5-P-O2	4.14	123.11	105.71
5	B	601	B12	C4R-O6R-C1R	-4.08	105.31	109.75
5	E	602	B12	C1R-N1B-C8B	4.01	132.28	125.85
5	E	602	B12	C7B-C8B-C9B	-3.99	116.60	120.54
5	E	602	B12	C30-C3-C2	3.47	126.17	119.04
5	B	601	B12	C53-C15-C16	3.43	123.61	118.64
5	B	601	B12	C2-C26-C27	3.40	125.27	115.21
5	E	602	B12	C53-C15-C16	3.38	123.53	118.64
5	E	602	B12	C30-C3-C4	3.32	120.97	112.22
5	E	602	B12	C20-C1-C19	-3.29	106.03	109.36
5	E	602	B12	C56-C57-N59	3.10	122.14	116.50
5	B	601	B12	O2-P-O3	-3.09	95.52	104.37
5	B	601	B12	C56-C57-N59	3.06	122.07	116.50
5	E	602	B12	C55-C17-C16	3.05	119.76	110.84
5	B	601	B12	C55-C17-C16	2.99	119.59	110.84
5	B	601	B12	C20-C1-C19	-2.96	106.36	109.36
5	B	601	B12	C35-C5-C6	2.93	122.88	118.64

Continued on next page...

Continued from previous page...

Mol	Chain	Res	Type	Atoms	Z	Observed(°)	Ideal(°)
5	E	602	B12	C2P-C1P-N59	2.84	117.48	112.98
5	B	601	B12	C4B-C9B-C8B	2.84	124.01	121.10
5	E	602	B12	O2-P-O3	-2.83	96.25	104.37
5	B	601	B12	C25-C2-C1	-2.78	109.73	113.80
5	E	602	B12	C26-C2-C1	2.77	114.27	110.04
5	B	601	B12	C9-C10-C11	-2.77	125.32	132.53
5	B	601	B12	C3P-C2P-C1P	2.76	117.25	111.28
5	B	601	B12	C47-C12-C46	-2.72	102.12	109.44
5	E	602	B12	C2-C26-C27	2.70	123.21	115.21
5	E	602	B12	C9-C10-C11	-2.68	125.55	132.53
5	B	601	B12	C53-C15-C14	-2.66	114.78	118.64
5	E	602	B12	C4B-C9B-C8B	2.65	123.82	121.10
5	E	602	B12	O44-C43-C42	-2.62	113.39	121.06
5	B	601	B12	O44-C43-C42	-2.61	113.41	121.06
5	E	602	B12	C47-C12-C46	-2.56	102.55	109.44
5	E	602	B12	C53-C15-C14	-2.50	115.02	118.64
5	E	602	B12	C35-C5-C6	2.45	122.18	118.64
5	E	602	B12	C8-C9-C10	-2.45	117.03	124.48
5	E	602	B12	C2-C1-C19	2.42	122.65	118.60
5	E	602	B12	O6R-C4R-C5R	-2.40	104.02	109.15
5	B	601	B12	C8-C9-C10	-2.38	117.22	124.48
5	B	601	B12	C3-C4-C5	-2.38	122.55	131.83
5	B	601	B12	C2-C1-C19	2.32	122.47	118.60
5	E	602	B12	C6-C5-C4	-2.29	118.41	122.30
5	E	602	B12	C25-C2-C1	-2.24	110.53	113.80
5	E	602	B12	C3-C4-C5	-2.23	123.13	131.83
5	B	601	B12	O6R-C4R-C5R	-2.22	104.41	109.15
5	E	602	B12	C37-C7-C8	-2.19	101.86	108.01
5	B	601	B12	C48-C49-C50	2.19	119.98	112.60
5	E	602	B12	C7-C37-C38	2.17	121.26	114.52
5	B	601	B12	O6R-C1R-N1B	-2.15	106.44	108.44
5	B	601	B12	C49-C48-C13	2.14	121.89	114.84
5	B	601	B12	C7-C37-C38	2.13	121.14	114.52
5	B	601	B12	C25-C2-C26	-2.12	105.11	109.59
5	E	602	B12	C19-C1-N21	2.12	104.41	102.11
5	B	601	B12	C42-C43-N45	2.10	123.27	116.51
5	E	602	B12	C3P-C2P-C1P	2.09	115.80	111.28
5	B	601	B12	C6-C5-C4	-2.05	118.83	122.30
5	E	602	B12	C31-C30-C3	2.02	121.47	114.84
5	B	601	B12	C2P-C1P-N59	2.01	116.17	112.98
5	E	602	B12	C47-C12-C13	2.00	121.34	112.81

There are no chirality outliers.

There are no torsion outliers.

There are no ring outliers.

5.7 Other polymers ⓘ

There are no such residues in this entry.

5.8 Polymer linkage issues

There are no chain breaks in this entry.

6 Fit of model and data ⓘ

6.1 Protein, DNA and RNA chains ⓘ

In the following table, the column labelled ‘#RSRZ> 2’ contains the number (and percentage) of RSRZ outliers, followed by percent RSRZ outliers for the chain as percentile scores relative to all X-ray entries and entries of similar resolution. The OWAB column contains the minimum, median, 95th percentile and maximum values of the occupancy-weighted average B-factor per residue. The column labelled ‘Q< 0.9’ lists the number of (and percentage) of residues with an average occupancy less than 0.9.

Mol	Chain	Analysed	<RSRZ>	#RSRZ>2	OWAB(Å ²)	Q<0.9
1	A	552/555 (99%)	-0.15	5 (0%) 81 82	24, 38, 55, 69	0
1	L	555/555 (100%)	-0.15	4 (0%) 84 86	21, 36, 54, 72	0
2	B	181/194 (93%)	0.26	7 (3%) 37 38	30, 48, 66, 77	0
2	E	184/194 (94%)	0.06	1 (0%) 88 90	32, 45, 61, 75	0
3	G	132/141 (93%)	-0.01	4 (3%) 48 50	31, 47, 66, 80	0
3	M	131/141 (92%)	0.02	4 (3%) 47 48	28, 43, 67, 75	0
All	All	1735/1780 (97%)	-0.06	25 (1%) 68 74	21, 41, 60, 80	0

All (25) RSRZ outliers are listed below:

Mol	Chain	Res	Type	RSRZ
3	M	141	SER	4.2
2	B	25	GLU	4.1
1	L	1	MET	3.7
3	M	56	TYR	3.6
2	E	25	GLU	3.5
2	B	11	PHE	3.5
3	M	20	HIS	3.5
1	L	45	ASP	3.4
2	B	27	ALA	3.4
1	A	529	GLY	3.2
1	L	46	ASN	3.0
2	B	19	GLY	2.9
3	G	35	GLU	2.9
2	B	16	ARG	2.8
1	A	46	ASN	2.8
1	A	48	LEU	2.7
1	L	36	PHE	2.7
3	M	139	LYS	2.6
3	G	42	VAL	2.4

Continued on next page...

Continued from previous page...

Mol	Chain	Res	Type	RSRZ
1	A	455	VAL	2.3
1	A	82	ARG	2.2
2	B	12	THR	2.2
3	G	141	SER	2.1
3	G	139	LYS	2.1
2	B	23	ALA	2.1

6.2 Non-standard residues in protein, DNA, RNA chains ⓘ

There are no non-standard protein/DNA/RNA residues in this entry.

6.3 Carbohydrates ⓘ

There are no carbohydrates in this entry.

6.4 Ligands ⓘ

In the following table, the Atoms column lists the number of modelled atoms in the group and the number defined in the chemical component dictionary. LLDF column lists the quality of electron density of the group with respect to its neighbouring residues in protein, DNA or RNA chains. The B-factors column lists the minimum, median, 95th percentile and maximum values of B factors of atoms in the group. The column labelled 'Q< 0.9' lists the number of atoms with occupancy less than 0.9.

Mol	Type	Chain	Res	Atoms	RSR	LLDF	B-factors(Å ²)	Q<0.9
4	K	A	1001	1/1	0.18	1.85	40,40,40,40	0
5	B12	B	601	91/91	0.15	0.60	20,34,45,48	0
5	B12	E	602	91/91	0.15	0.58	22,31,38,46	0
4	K	L	1002	1/1	0.09	-2.00	34,34,34,34	0

6.5 Other polymers ⓘ

There are no such residues in this entry.