



# Full wwPDB X-ray Structure Validation Report

Feb 28, 2014 – 11:36 PM GMT

PDB ID : 1MMP  
Title : MATRILYSIN COMPLEXED WITH CARBOXYLATE INHIBITOR  
Authors : Browner, M.F.; Smith, W.W.; Castelhana, A.L.  
Deposited on : 1995-03-22  
Resolution : 2.30 Å(reported)

This is a full wwPDB validation report for a publicly released PDB entry.  
We welcome your comments at [validation@mail.wwpdb.org](mailto:validation@mail.wwpdb.org)  
A user guide is available at <http://wwpdb.org/ValidationPDFNotes.html>

---

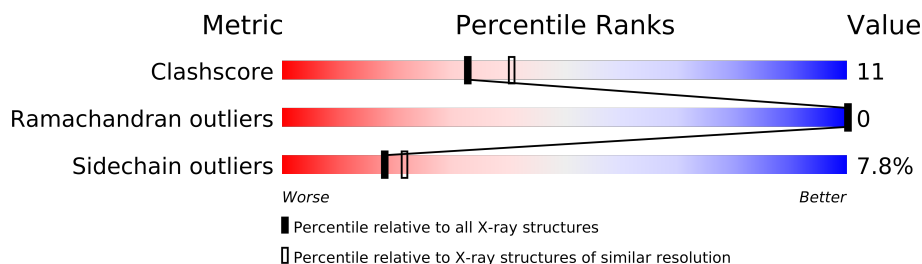
The following versions of software and data (see [references](#)) were used in the production of this report:

MolProbity : 4.02b-467  
Mogul : 1.15 2013  
Xtriage (Phenix) : **NOT EXECUTED**  
EDS : **NOT EXECUTED**  
Percentile statistics : 21963  
Ideal geometry (proteins) : Engh & Huber (2001)  
Ideal geometry (DNA, RNA) : Parkinson et. al. (1996)  
Validation Pipeline (wwPDB-VP) : stable22683

# 1 Overall quality at a glance

The reported resolution of this entry is 2.30 Å.

Percentile scores (ranging between 0-100) for global validation metrics of the entry are shown in the following graphic. The table shows the number of entries on which the scores are based.



Metric	Whole archive (#Entries)	Similar resolution (#Entries, resolution range(Å))
Clashscore	79885	3679 (2.30-2.30)
Ramachandran outliers	78287	3642 (2.30-2.30)
Sidechain outliers	78261	3641 (2.30-2.30)

The table below summarises the geometric issues observed across the polymeric chains and their fit to the electron density. The red, orange, yellow and green segments on the lower bar indicate the fraction of residues that contain outliers for  $\geq 3$ , 2, 1 and 0 types of geometric quality criteria. The upper red bar (where present) indicates the fraction of residues that have poor fit to the electron density.

Note EDS was not executed.

Mol	Chain	Length	Quality of chain
1	A	170	
1	B	170	

## 2 Entry composition

There are 5 unique types of molecules in this entry. The entry contains 2709 atoms, of which 12 are hydrogens and 0 are deuterium.

In the tables below, the ZeroOcc column contains the number of atoms modelled with zero occupancy, the AltConf column contains the number of residues with at least one atom in alternate conformation and the Trace column contains the number of residues modelled with at most 2 atoms.

- Molecule 1 is a protein called GELATINASE A.

Mol	Chain	Residues	Atoms						ZeroOcc	AltConf	Trace
1	A	166	Total	C	H	N	O	S	0	0	0
			1274	810	6	215	239	4			
1	B	166	Total	C	H	N	O	S	0	0	0
			1274	810	6	215	239	4			

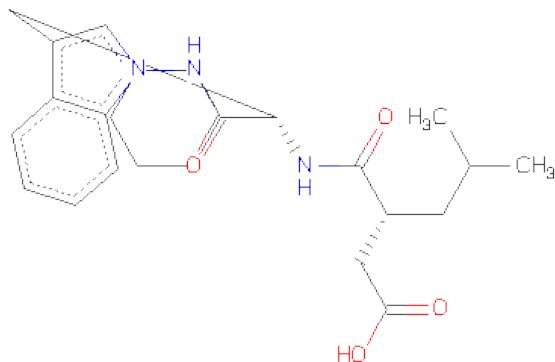
- Molecule 2 is ZINC ION (three-letter code: ZN) (formula: Zn).

Mol	Chain	Residues	Atoms		ZeroOcc	AltConf
2	B	2	Total	Zn	0	0
			2	2		
2	A	2	Total	Zn	0	0
			2	2		

- Molecule 3 is CALCIUM ION (three-letter code: CA) (formula: Ca).

Mol	Chain	Residues	Atoms		ZeroOcc	AltConf
3	B	2	Total	Ca	0	0
			2	2		
3	A	2	Total	Ca	0	0
			2	2		

- Molecule 4 is 5-METHYL-3-(9-OXO-1,8-DIAZA-TRICYCLO[10.6.1.013,18]NONADECA-12(19),13,15,17-TETRAEN-10-YLCARBAMOYL)-HEXANOICACID (three-letter code: RSS) (formula: C<sub>25</sub>H<sub>35</sub>N<sub>3</sub>O<sub>4</sub>).



Mol	Chain	Residues	Atoms				ZeroOcc	AltConf
4	A	1	Total	C	N	O	0	0
			32	25	3	4		
4	B	1	Total	C	N	O	0	0
			32	25	3	4		

- Molecule 5 is water.

Mol	Chain	Residues	Atoms		ZeroOcc	AltConf
5	A	46	Total	O	0	0
			46	46		
5	B	43	Total	O	0	0
			43	43		

### 3 Residue-property plots

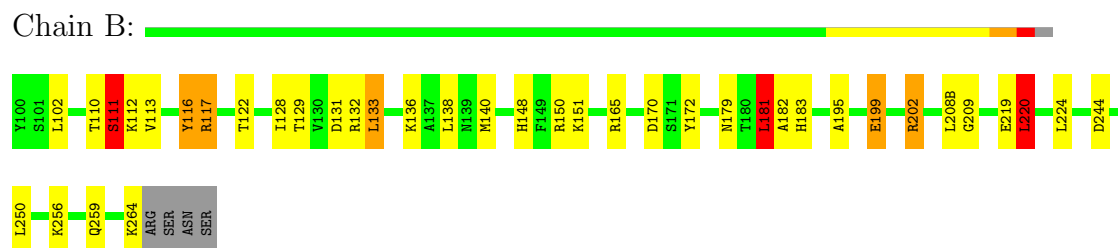
These plots are drawn for all protein, RNA and DNA chains in the entry. The first graphic for a chain summarises the proportions of errors displayed in the second graphic. The second graphic shows the sequence view annotated by issues in geometry and electron density. Residues are color-coded according to the number of geometric quality criteria for which they contain at least one outlier: green = 0, yellow = 1, orange = 2 and red = 3 or more. A red dot above a residue indicates a poor fit to the electron density ( $RSRZ > 2$ ). Stretches of 2 or more consecutive residues without any outlier are shown as a green connector. Residues present in the sample, but not in the model, are shown in grey.

Note EDS was not executed.

#### • Molecule 1: GELATINASE A



#### • Molecule 1: GELATINASE A



## 4 Data and refinement statistics

Xtriage (Phenix) and EDS were not executed - this section will therefore be incomplete.

Property	Value	Source
Space group	P 32 2 1	Depositor
Cell constants a, b, c, $\alpha$ , $\beta$ , $\gamma$	62.00Å 62.00Å 175.70Å 90.00° 90.00° 120.00°	Depositor
Resolution (Å)	6.00 – 2.30	Depositor
% Data completeness (in resolution range)	(Not available) (6.00-2.30)	Depositor
$R_{merge}$	0.09	Depositor
$R_{sym}$	(Not available)	Depositor
Refinement program	X-PLOR 3.1	Depositor
R, $R_{free}$	0.180 , (Not available)	Depositor
Estimated twinning fraction	No twinning to report.	Xtriage
Total number of atoms	2709	wwPDB-VP
Average B, all atoms (Å <sup>2</sup> )	19.0	wwPDB-VP

## 5 Model quality

### 5.1 Standard geometry

Bond lengths and bond angles in the following residue types are not validated in this section: ZN, CA, RSS

The Z score for a bond length (or angle) is the number of standard deviations the observed value is removed from the expected value. A bond length (or angle) with  $|Z| > 5$  is considered an outlier worth inspection. RMSZ is the root-mean-square of all Z scores of the bond lengths (or angles).

Mol	Chain	Bond lengths		Bond angles	
		RMSZ	$\# Z  > 5$	RMSZ	$\# Z  > 5$
1	A	0.97	0/1309	1.32	7/1785 (0.4%)
1	B	4.27	6/1308 (0.5%)	2.23	16/1782 (0.9%)
All	All	3.10	6/2617 (0.2%)	1.83	23/3567 (0.6%)

Chiral center outliers are detected by calculating the chiral volume of a chiral center and verifying if the center is modelled as a planar moiety or with the opposite hand. A planarity outlier is detected by checking planarity of atoms in a peptide group, atoms in a mainchain group or atoms of a sidechain that are expected to be planar.

Mol	Chain	#Chirality outliers	#Planarity outliers
1	B	0	1

All (6) bond length outliers are listed below:

Mol	Chain	Res	Type	Atoms	Z	Observed(Å)	Ideal(Å)
1	B	111	SER	CA-CB	96.19	2.97	1.52
1	B	181	LEU	C-O	86.41	2.87	1.23
1	B	111	SER	CA-C	66.00	3.24	1.52
1	B	111	SER	N-CA	32.43	2.11	1.46
1	B	220	LEU	CG-CD1	17.37	2.16	1.51
1	B	181	LEU	CA-C	15.11	1.92	1.52

All (23) bond angle outliers are listed below:

Mol	Chain	Res	Type	Atoms	Z	Observed(°)	Ideal(°)
1	B	111	SER	N-CA-CB	-36.05	56.42	110.50
1	B	111	SER	CB-CA-C	-33.55	46.35	110.10
1	B	181	LEU	CB-CA-C	-33.50	46.55	110.20
1	B	181	LEU	CA-C-O	-29.67	57.79	120.10
1	B	111	SER	N-CA-C	-23.09	48.64	111.00

*Continued on next page...*

*Continued from previous page...*

Mol	Chain	Res	Type	Atoms	Z	Observed(°)	Ideal(°)
1	B	110	THR	C-N-CA	-22.82	64.64	121.70
1	B	220	LEU	CD1-CG-CD2	14.75	154.75	110.50
1	B	220	LEU	CB-CG-CD1	-9.06	95.59	111.00
1	B	170	ASP	CB-CG-OD1	8.59	126.03	118.30
1	B	117	ARG	NE-CZ-NH2	-8.43	116.08	120.30
1	A	170	ASP	CB-CG-OD1	8.35	125.82	118.30
1	A	117	ARG	NE-CZ-NH2	-7.79	116.41	120.30
1	B	117	ARG	NE-CZ-NH1	7.53	124.06	120.30
1	A	140	MET	CG-SD-CE	-7.42	88.34	100.20
1	A	117	ARG	NE-CZ-NH1	7.31	123.95	120.30
1	B	140	MET	CG-SD-CE	-6.71	89.46	100.20
1	B	244	ASP	CB-CG-OD1	6.34	124.01	118.30
1	B	202	ARG	CB-CG-CD	6.19	127.70	111.60
1	A	244	ASP	CB-CG-OD1	6.17	123.85	118.30
1	A	202	ARG	CB-CG-CD	6.01	127.24	111.60
1	A	150	ARG	NE-CZ-NH2	-5.59	117.51	120.30
1	B	150	ARG	NE-CZ-NH2	-5.33	117.64	120.30
1	B	116	TYR	CB-CG-CD2	-5.22	117.87	121.00

There are no chirality outliers.

All (1) planarity outliers are listed below:

Mol	Chain	Res	Type	Group
1	B	111	SER	Mainchain

## 5.2 Close contacts ⓘ

In the following table, the Non-H and H(model) columns list the number of non-hydrogen atoms and hydrogen atoms in the chain respectively. The H(added) column lists the number of hydrogens added by MolProbity. The Clashes column lists the number of clashes within the asymmetric unit, and the number in parentheses is this value normalized per 1000 atoms of the molecule in the chain. The Symm-Clashes column gives symmetry related clashes, in the same way as for the Clashes column.

Mol	Chain	Non-H	H(model)	H(added)	Clashes	Symm-Clashes
1	A	1268	6	1165	15	0
1	B	1268	6	1164	44	0
2	A	2	0	0	0	0
2	B	2	0	0	0	0
3	A	2	0	0	0	0
3	B	2	0	0	0	0

*Continued on next page...*



*Continued from previous page...*

Mol	Chain	Non-H	H(model)	H(added)	Clashes	Symm-Clashes
4	A	32	0	34	0	0
4	B	32	0	34	1	0
5	A	46	0	0	1	0
5	B	43	0	0	4	0
All	All	2697	12	2397	56	0

Clashscore is defined as the number of clashes calculated for the entry per 1000 atoms (including hydrogens) of the entry. The overall clashscore for this entry is 11.

All (56) close contacts within the same asymmetric unit are listed below.

Atom-1	Atom-2	Distance(Å)	Clash(Å)
1:B:220:LEU:CG	1:B:220:LEU:CD1	2.16	1.23
1:A:111:SER:HA	1:B:111:SER:CA	1.78	1.12
1:B:220:LEU:HD13	1:B:220:LEU:N	1.65	1.10
1:B:220:LEU:CA	1:B:220:LEU:CD1	2.39	1.01
1:A:111:SER:HA	1:B:111:SER:HA	1.43	0.96
1:B:111:SER:C	1:B:111:SER:HB2	1.88	0.94
1:B:220:LEU:HA	1:B:220:LEU:CD1	2.00	0.91
1:B:220:LEU:CD1	1:B:220:LEU:N	2.34	0.91
1:B:181:LEU:C	1:B:182:ALA:N	2.26	0.89
1:B:220:LEU:HD12	1:B:220:LEU:HA	1.57	0.87
1:B:219:GLU:C	1:B:220:LEU:HD13	1.98	0.83
1:B:111:SER:CB	1:B:111:SER:C	2.46	0.83
1:B:181:LEU:CA	1:B:182:ALA:N	2.44	0.81
1:B:111:SER:CB	1:B:111:SER:N	2.52	0.73
1:B:111:SER:C	1:B:111:SER:N	2.43	0.71
1:B:181:LEU:O	1:B:182:ALA:N	2.25	0.70
1:B:111:SER:C	1:B:111:SER:H	2.01	0.64
1:B:181:LEU:CA	1:B:181:LEU:O	2.46	0.64
1:B:220:LEU:CD1	1:B:220:LEU:CB	2.79	0.60
1:B:202:ARG:HG3	1:B:209:GLY:HA2	1.82	0.60
1:A:202:ARG:HG3	1:A:209:GLY:HA2	1.84	0.59
1:B:138:LEU:HG	1:B:220:LEU:HD23	1.87	0.57
1:A:138:LEU:HG	1:A:220:LEU:HD13	1.87	0.56
1:B:113:VAL:HG22	1:B:148:HIS:HB2	1.86	0.56
1:B:259:GLN:OE1	1:B:264:LYS:HG2	2.07	0.54
1:A:113:VAL:HG22	1:A:148:HIS:HB2	1.89	0.54
1:A:259:GLN:OE1	1:A:264:LYS:HG2	2.09	0.53
1:B:181:LEU:HA	1:B:181:LEU:O	2.14	0.48
1:B:202:ARG:HG2	5:B:351:HOH:O	2.14	0.47
1:B:165:ARG:HG2	1:B:199:GLU:HB3	1.97	0.47
1:A:202:ARG:H	1:A:202:ARG:HG2	1.60	0.46

*Continued on next page...*

*Continued from previous page...*

Atom-1	Atom-2	Distance(Å)	Clash(Å)
1:A:129:THR:HG22	1:A:133:LEU:HD22	1.97	0.46
1:B:136:LYS:NZ	5:B:350:HOH:O	2.47	0.46
1:B:129:THR:HG22	1:B:133:LEU:HD22	1.97	0.46
1:A:117:ARG:HD2	5:A:371:HOH:O	2.16	0.45
1:A:165:ARG:HG2	1:A:199:GLU:HB3	1.98	0.45
1:A:116:TYR:CZ	1:A:151:LYS:HB2	2.52	0.45
1:B:131:ASP:CG	1:B:151:LYS:NZ	2.70	0.45
1:B:111:SER:HB2	1:B:112:LYS:N	2.31	0.45
1:B:202:ARG:HG2	1:B:202:ARG:H	1.63	0.44
1:B:117:ARG:HD2	5:B:377:HOH:O	2.17	0.44
1:A:131:ASP:CG	1:A:151:LYS:NZ	2.71	0.44
1:B:128:ILE:O	1:B:132:ARG:HG3	2.18	0.44
1:B:132:ARG:NH1	5:B:344:HOH:O	2.51	0.44
1:B:111:SER:CB	1:B:111:SER:CA	2.97	0.43
1:A:202:ARG:HG3	1:A:209:GLY:CA	2.48	0.43
1:B:116:TYR:CZ	1:B:151:LYS:HB2	2.54	0.43
1:B:202:ARG:HG3	1:B:209:GLY:CA	2.48	0.42
1:A:128:ILE:O	1:A:132:ARG:HG3	2.19	0.42
1:B:220:LEU:CD1	1:B:220:LEU:HG	2.36	0.42
1:A:111:SER:HB3	1:B:111:SER:HB3	2.01	0.42
1:B:181:LEU:HB2	4:B:269:RSS:O3	2.20	0.41
1:B:172:TYR:O	1:B:183:HIS:HE1	2.03	0.41
1:B:128:ILE:HD12	1:B:128:ILE:HA	1.89	0.41
1:B:195:ALA:CB	1:B:220:LEU:HD11	2.50	0.40
1:B:208(B):LEU:HA	1:B:208(B):LEU:HD12	1.90	0.40

There are no symmetry-related clashes.

## 5.3 Torsion angles

### 5.3.1 Protein backbone ⓘ

In the following table, the Percentiles column shows the percent Ramachandran outliers of the chain as a percentile score with respect to all X-ray entries followed by that with respect to entries of similar resolution. The Analysed column shows the number of residues for which the backbone conformation was analysed, and the total number of residues.

Mol	Chain	Analysed	Favoured	Allowed	Outliers	Percentiles	
1	A	164/170 (96%)	160 (98%)	4 (2%)	0	100	100
1	B	162/170 (95%)	157 (97%)	5 (3%)	0	100	100
All	All	326/340 (96%)	317 (97%)	9 (3%)	0	100	100

There are no Ramachandran outliers to report.

### 5.3.2 Protein sidechains ⓘ

In the following table, the Percentiles column shows the percent sidechain outliers of the chain as a percentile score with respect to all X-ray entries followed by that with respect to entries of similar resolution. The Analysed column shows the number of residues for which the sidechain conformation was analysed, and the total number of residues.

Mol	Chain	Analysed	Rotameric	Outliers	Percentiles	
1	A	129/139 (93%)	120 (93%)	9 (7%)	21	26
1	B	129/139 (93%)	118 (92%)	11 (8%)	15	18
All	All	258/278 (93%)	238 (92%)	20 (8%)	18	22

All (20) residues with a non-rotameric sidechain are listed below:

Mol	Chain	Res	Type
1	A	102	LEU
1	A	122	THR
1	A	133	LEU
1	A	179	ASN
1	A	181	LEU
1	A	199	GLU
1	A	224	LEU
1	A	250	LEU
1	A	256	LYS
1	B	102	LEU
1	B	111	SER
1	B	122	THR
1	B	133	LEU
1	B	179	ASN
1	B	181	LEU
1	B	199	GLU
1	B	220	LEU
1	B	224	LEU
1	B	250	LEU
1	B	256	LYS

Some sidechains can be flipped to improve hydrogen bonding and reduce clashes. All (2) such sidechains are listed below:

Mol	Chain	Res	Type
1	A	179	ASN

*Continued on next page...*

*Continued from previous page...*

Mol	Chain	Res	Type
1	B	179	ASN

### 5.3.3 RNA ⓘ

There are no RNA chains in this entry.

## 5.4 Non-standard residues in protein, DNA, RNA chains ⓘ

There are no non-standard protein/DNA/RNA residues in this entry.

## 5.5 Carbohydrates ⓘ

There are no carbohydrates in this entry.

## 5.6 Ligand geometry ⓘ

Of 10 ligands modelled in this entry, 8 are monoatomic - leaving 2 for Mogul analysis.

In the following table, the Counts columns list the number of bonds (or angles) for which Mogul statistics could be retrieved, the number of bonds (or angles) that are observed in the model and the number of bonds (or angles) that are defined in the chemical component dictionary. The Link column lists molecule types, if any, to which the group is linked. The Z score for a bond length (or angle) is the number of standard deviations the observed value is removed from the expected value. A bond length (or angle) with  $|Z| > 2$  is considered an outlier worth inspection. RMSZ is the root-mean-square of all Z scores of the bond lengths (or angles).

Mol	Type	Chain	Res	Link	Bond lengths			Bond angles		
					Counts	RMSZ	$\# Z  > 2$	Counts	RMSZ	$\# Z  > 2$
4	RSS	A	269	2	34,34,34	1.22	3 (8%)	46,46,46	1.37	5 (10%)
4	RSS	B	269	2	34,34,34	1.23	3 (8%)	46,46,46	1.35	6 (13%)

In the following table, the Chirals column lists the number of chiral outliers, the number of chiral centers analysed, the number of these observed in the model and the number defined in the chemical component dictionary. Similar counts are reported in the Torsion and Rings columns. '-' means no outliers of that kind were identified.

Mol	Type	Chain	Res	Link	Chirals	Torsions	Rings
4	RSS	A	269	2	-	0/34/34/34	0/0/3/3
4	RSS	B	269	2	-	0/34/34/34	0/0/3/3

All (6) bond length outliers are listed below:

Mol	Chain	Res	Type	Atoms	Z	Observed(Å)	Ideal(Å)
4	A	269	RSS	C21-N4	-3.83	1.35	1.39
4	B	269	RSS	O1-C1	3.43	1.34	1.22
4	B	269	RSS	C21-N4	-3.43	1.36	1.39
4	A	269	RSS	O1-C1	3.18	1.33	1.22
4	B	269	RSS	C17-C18	-2.30	1.48	1.51
4	A	269	RSS	C17-C18	-2.18	1.48	1.51

All (11) bond angle outliers are listed below:

Mol	Chain	Res	Type	Atoms	Z	Observed(°)	Ideal(°)
4	A	269	RSS	O2-C1-O1	-4.62	111.54	123.30
4	B	269	RSS	O2-C1-O1	-4.30	112.35	123.30
4	B	269	RSS	C18-C19-N4	4.15	112.04	107.23
4	A	269	RSS	C18-C19-N4	3.60	111.40	107.23
4	A	269	RSS	O2-C1-C2	3.27	125.50	114.20
4	B	269	RSS	O2-C1-C2	2.85	124.04	114.20
4	B	269	RSS	C2-C3-C4	-2.58	106.07	110.06
4	A	269	RSS	C3-C2-C1	-2.42	108.17	114.07
4	A	269	RSS	C2-C3-C4	-2.36	106.41	110.06
4	B	269	RSS	C3-C2-C1	-2.34	108.35	114.07
4	B	269	RSS	C19-C18-C20	-2.27	104.35	107.28

There are no chirality outliers.

There are no torsion outliers.

There are no ring outliers.

## 5.7 Other polymers ⓘ

There are no such residues in this entry.

## 5.8 Polymer linkage issues

There are no chain breaks in this entry.

## 6 Fit of model and data ⓘ

### 6.1 Protein, DNA and RNA chains ⓘ

EDS was not executed - this section will therefore be empty.

### 6.2 Non-standard residues in protein, DNA, RNA chains ⓘ

EDS was not executed - this section will therefore be empty.

### 6.3 Carbohydrates ⓘ

EDS was not executed - this section will therefore be empty.

### 6.4 Ligands ⓘ

EDS was not executed - this section will therefore be empty.

### 6.5 Other polymers ⓘ

EDS was not executed - this section will therefore be empty.