



Full wwPDB X-ray Structure Validation Report

Feb 26, 2014 – 10:30 PM GMT

PDB ID : 1MOK
Title : NADPH DEPENDENT 2-KETOPROPYL COENZYME M OXIDOREDUCTASE/CARBOXYLASE
Authors : Nocek, B.; Jang, S.B.; Jeong, M.S.; Clark, D.D.; Ensign, S.A.; Peters, J.W.
Deposited on : 2002-09-09
Resolution : 2.80 Å(reported)

This is a full wwPDB validation report for a publicly released PDB entry.
We welcome your comments at validation@mail.wwpdb.org
A user guide is available at <http://wwpdb.org/ValidationPDFNotes.html>

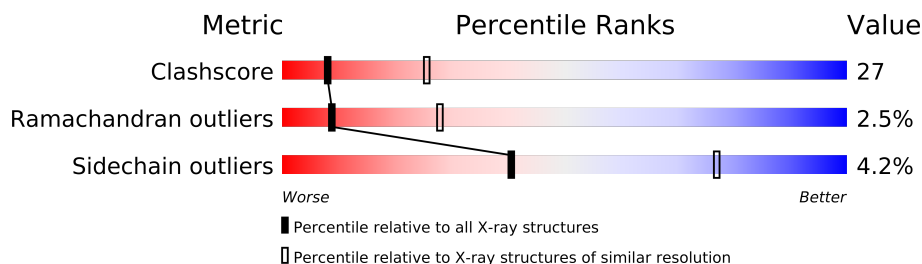
The following versions of software and data (see [references](#)) were used in the production of this report:

MolProbity : 4.02b-467
Mogul : 1.15 2013
Xtriage (Phenix) : **NOT EXECUTED**
EDS : **NOT EXECUTED**
Percentile statistics : 21963
Ideal geometry (proteins) : Engh & Huber (2001)
Ideal geometry (DNA, RNA) : Parkinson et. al. (1996)
Validation Pipeline (wwPDB-VP) : stable22683

1 Overall quality at a glance

The reported resolution of this entry is 2.80 Å.

Percentile scores (ranging between 0-100) for global validation metrics of the entry are shown in the following graphic. The table shows the number of entries on which the scores are based.



Metric	Whole archive (#Entries)	Similar resolution (#Entries, resolution range(Å))
Clashscore	79885	2295 (2.80-2.80)
Ramachandran outliers	78287	2252 (2.80-2.80)
Sidechain outliers	78261	2254 (2.80-2.80)

The table below summarises the geometric issues observed across the polymeric chains and their fit to the electron density. The red, orange, yellow and green segments on the lower bar indicate the fraction of residues that contain outliers for ≥ 3 , 2, 1 and 0 types of geometric quality criteria. The upper red bar (where present) indicates the fraction of residues that have poor fit to the electron density.

Note EDS was not executed.

Mol	Chain	Length	Quality of chain
1	A	523	
1	B	523	
1	C	523	
1	D	523	

2 Entry composition i

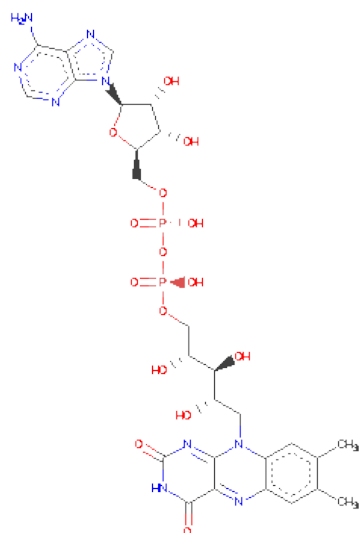
There are 2 unique types of molecules in this entry. The entry contains 16304 atoms, of which 0 are hydrogen and 0 are deuterium.

In the tables below, the ZeroOcc column contains the number of atoms modelled with zero occupancy, the AltConf column contains the number of residues with at least one atom in alternate conformation and the Trace column contains the number of residues modelled with at most 2 atoms.

- Molecule 1 is a protein called orf3.

Mol	Chain	Residues	Atoms					ZeroOcc	AltConf	Trace
1	A	522	Total	C	N	O	S	0	0	0
			4023	2546	699	755	23			
1	B	522	Total	C	N	O	S	0	0	0
			4023	2546	699	755	23			
1	C	522	Total	C	N	O	S	0	0	0
			4023	2546	699	755	23			
1	D	522	Total	C	N	O	S	0	0	0
			4023	2546	699	755	23			

- Molecule 2 is FLAVIN-ADENINE DINUCLEOTIDE (three-letter code: FAD) (formula: $C_{27}H_{33}N_9O_{15}P_2$).



Mol	Chain	Residues	Atoms					ZeroOcc	AltConf
2	A	1	Total	C	N	O	P	0	0
			53	27	9	15	2		
2	B	1	Total	C	N	O	P	0	0
			53	27	9	15	2		

Continued on next page...

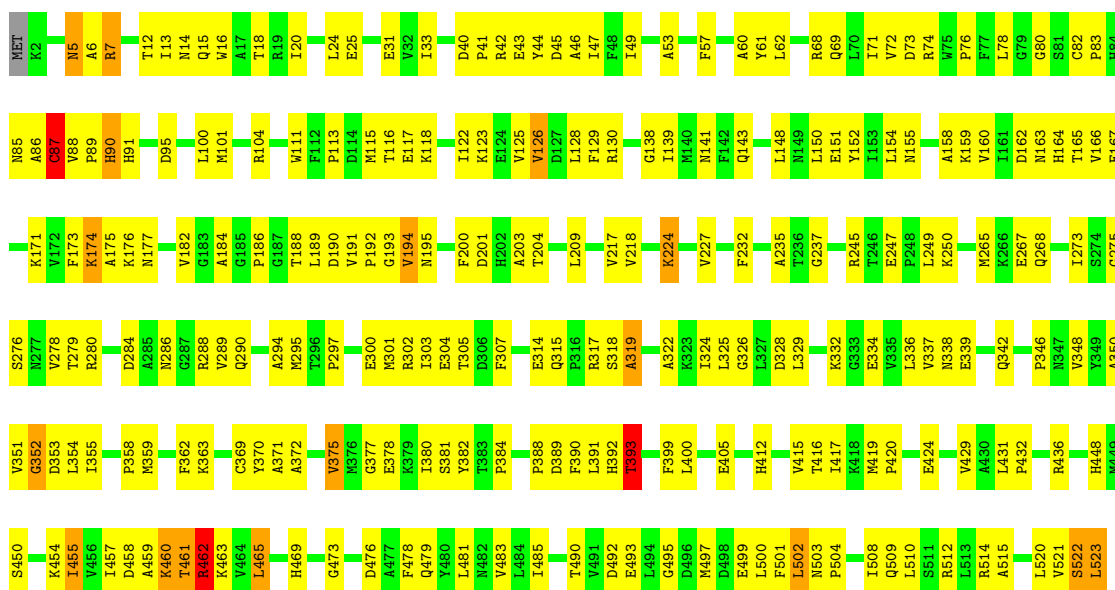
Continued from previous page...

Mol	Chain	Residues	Atoms					ZeroOcc	AltConf
2	C	1	Total	C	N	O	P	0	0
			53	27	9	15	2		
2	D	1	Total	C	N	O	P	0	0
			53	27	9	15	2		



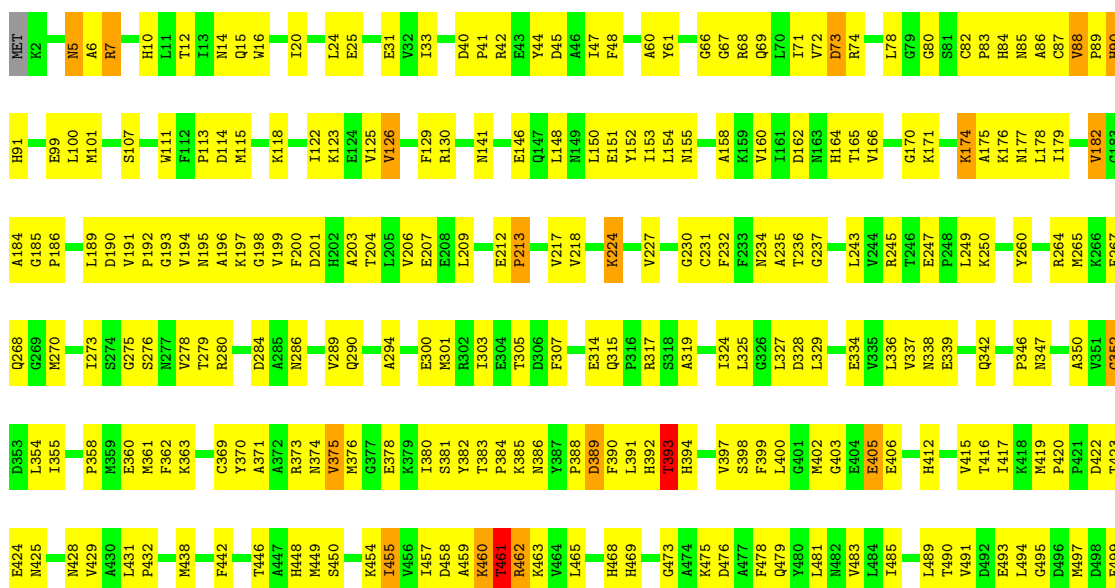
• Molecule 1: orf3

Chain C:



• Molecule 1: orf3

Chain D:



L500	F501	L502	N503	P504	T505	H506	F507	I508	Q509	L510	S511	R512	L513	R514	V521	S522	L523
------	------	------	------	------	------	------	------	------	------	------	------	------	------	------	------	------	------

4 Data and refinement statistics

Xtriage (Phenix) and EDS were not executed - this section will therefore be incomplete.

Property	Value	Source
Space group	P 1	Depositor
Cell constants a, b, c, α , β , γ	65.60Å 87.50Å 100.70Å 72.00° 73.40° 69.81°	Depositor
Resolution (Å)	19.99 – 2.80	Depositor
% Data completeness (in resolution range)	(Not available) (19.99-2.80)	Depositor
R_{merge}	(Not available)	Depositor
R_{sym}	(Not available)	Depositor
Refinement program	CNS 1.0	Depositor
R, R_{free}	0.225 , 0.277	Depositor
Estimated twinning fraction	No twinning to report.	Xtriage
Total number of atoms	16304	wwPDB-VP
Average B, all atoms (Å ²)	35.0	wwPDB-VP

5 Model quality

5.1 Standard geometry

Bond lengths and bond angles in the following residue types are not validated in this section: FAD

The Z score for a bond length (or angle) is the number of standard deviations the observed value is removed from the expected value. A bond length (or angle) with $|Z| > 5$ is considered an outlier worth inspection. RMSZ is the root-mean-square of all Z scores of the bond lengths (or angles).

Mol	Chain	Bond lengths		Bond angles	
		RMSZ	$\# Z > 5$	RMSZ	$\# Z > 5$
1	A	0.48	1/4106 (0.0%)	0.66	2/5556 (0.0%)
1	B	0.53	2/4106 (0.0%)	0.71	4/5556 (0.1%)
1	C	0.48	1/4106 (0.0%)	0.67	4/5556 (0.1%)
1	D	0.50	1/4106 (0.0%)	0.67	2/5556 (0.0%)
All	All	0.50	5/16424 (0.0%)	0.68	12/22224 (0.1%)

All (5) bond length outliers are listed below:

Mol	Chain	Res	Type	Atoms	Z	Observed(Å)	Ideal(Å)
1	B	523	LEU	C-O	-16.04	0.92	1.23
1	D	523	LEU	C-O	-15.27	0.94	1.23
1	C	523	LEU	C-O	-15.03	0.94	1.23
1	A	523	LEU	C-O	-14.81	0.95	1.23
1	B	73	ASP	C-N	-7.01	1.18	1.34

All (12) bond angle outliers are listed below:

Mol	Chain	Res	Type	Atoms	Z	Observed(°)	Ideal(°)
1	B	523	LEU	CA-C-O	12.25	145.82	120.10
1	D	523	LEU	CA-C-O	11.65	144.57	120.10
1	A	523	LEU	CA-C-O	10.93	143.06	120.10
1	C	523	LEU	CA-C-O	10.14	141.41	120.10
1	B	462	ARG	NE-CZ-NH2	7.37	123.98	120.30
1	A	393	THR	N-CA-C	-7.20	91.57	111.00
1	C	462	ARG	NE-CZ-NH2	6.94	123.77	120.30
1	D	393	THR	N-CA-C	-6.69	92.94	111.00
1	B	74	ARG	NE-CZ-NH2	6.66	123.63	120.30
1	C	393	THR	N-CA-C	-6.39	93.75	111.00
1	B	393	THR	N-CA-C	-5.98	94.85	111.00
1	C	87	CYS	CA-CB-SG	5.26	123.47	114.00

There are no chirality outliers.

There are no planarity outliers.

5.2 Close contacts ⓘ

In the following table, the Non-H and H(model) columns list the number of non-hydrogen atoms and hydrogen atoms in the chain respectively. The H(added) column lists the number of hydrogens added by MolProbity. The Clashes column lists the number of clashes within the asymmetric unit, and the number in parentheses is this value normalized per 1000 atoms of the molecule in the chain. The Symm-Clashes column gives symmetry related clashes, in the same way as for the Clashes column.

Mol	Chain	Non-H	H(model)	H(added)	Clashes	Symm-Clashes
1	A	4023	0	3980	222	0
1	B	4023	0	3979	217	0
1	C	4023	0	3980	234	0
1	D	4023	0	3980	231	0
2	A	53	0	31	6	0
2	B	53	0	31	6	0
2	C	53	0	31	9	0
2	D	53	0	31	12	0
All	All	16304	0	16043	864	0

Clashscore is defined as the number of clashes calculated for the entry per 1000 atoms (including hydrogens) of the entry. The overall clashscore for this entry is 27.

All (864) close contacts within the same asymmetric unit are listed below.

Atom-1	Atom-2	Distance(Å)	Clash(Å)
1:C:460:LYS:O	1:C:461:THR:HB	1.39	1.08
1:C:82:CYS:HA	1:C:86:ALA:HB3	1.38	1.05
1:A:82:CYS:HA	1:A:86:ALA:HB3	1.42	1.00
1:D:40:ASP:OD1	1:D:42:ARG:HG2	1.64	0.98
1:C:165:THR:HG22	1:C:174:LYS:HG3	1.46	0.97
1:C:201:ASP:H	1:C:204:THR:HG22	1.27	0.95
1:A:69:GLN:HE22	1:A:151:GLU:H	1.02	0.94
1:B:460:LYS:O	1:B:461:THR:HB	1.64	0.94
1:D:201:ASP:H	1:D:204:THR:HG22	1.34	0.93
1:A:460:LYS:O	1:A:461:THR:HB	1.69	0.93
1:B:69:GLN:HE22	1:B:151:GLU:H	0.94	0.93
1:A:201:ASP:H	1:A:204:THR:HG22	1.28	0.92
1:B:201:ASP:H	1:B:204:THR:HG22	1.34	0.92
1:D:69:GLN:HE22	1:D:151:GLU:H	0.92	0.92
1:D:82:CYS:HA	1:D:86:ALA:HB3	1.52	0.91

Continued on next page...

Continued from previous page...

Atom-1	Atom-2	Distance(Å)	Clash(Å)
1:D:227:VAL:HG21	1:D:249:LEU:HD21	1.53	0.90
1:D:165:THR:HG22	1:D:174:LYS:HG3	1.53	0.90
1:A:5:ASN:HD21	1:A:7:ARG:HB2	1.36	0.89
1:A:227:VAL:HG21	1:A:249:LEU:HD21	1.55	0.89
1:C:69:GLN:NE2	1:C:151:GLU:H	1.71	0.89
1:A:165:THR:HG22	1:A:174:LYS:HG3	1.55	0.88
1:B:5:ASN:HD21	1:B:7:ARG:HB2	1.38	0.88
1:D:337:VAL:HG21	1:D:355:ILE:HD13	1.55	0.88
1:C:69:GLN:HE22	1:C:151:GLU:N	1.71	0.88
1:A:350:ALA:O	1:A:355:ILE:HD11	1.74	0.88
1:A:40:ASP:OD1	1:A:42:ARG:HG2	1.73	0.88
1:B:82:CYS:HB3	1:B:83:PRO:HD3	1.55	0.87
1:D:69:GLN:HE22	1:D:151:GLU:N	1.74	0.86
1:D:460:LYS:O	1:D:461:THR:HB	1.75	0.85
1:C:69:GLN:HE22	1:C:151:GLU:H	0.87	0.83
1:D:350:ALA:O	1:D:355:ILE:HD11	1.79	0.83
1:C:227:VAL:HG21	1:C:249:LEU:HD21	1.58	0.83
1:D:69:GLN:NE2	1:D:151:GLU:H	1.75	0.81
1:A:12:THR:HB	1:A:15:GLN:HG3	1.63	0.80
1:B:227:VAL:HG21	1:B:249:LEU:HD21	1.62	0.80
1:A:126:VAL:O	1:A:130:ARG:HG3	1.82	0.80
1:B:165:THR:HG22	1:B:174:LYS:HG3	1.63	0.80
1:B:217:VAL:HG22	1:B:307:PHE:HD2	1.46	0.79
1:C:432:PRO:O	1:C:450:SER:HB2	1.82	0.79
1:C:82:CYS:CA	1:C:86:ALA:HB3	2.12	0.79
1:A:201:ASP:H	1:A:204:THR:CG2	1.96	0.78
1:B:40:ASP:OD1	1:B:42:ARG:HG2	1.82	0.78
1:C:5:ASN:HD21	1:C:7:ARG:HB2	1.48	0.78
1:A:5:ASN:ND2	1:A:7:ARG:HB2	1.99	0.78
1:D:417:ILE:HG22	1:D:455:ILE:HG22	1.66	0.78
1:A:255:ASN:HB2	1:A:405:GLU:OE1	1.83	0.78
1:A:74:ARG:O	1:A:155:ASN:HA	1.83	0.78
1:B:499:GLU:HB2	1:B:503:ASN:ND2	1.99	0.77
1:B:5:ASN:ND2	1:B:7:ARG:HB2	1.98	0.77
1:D:201:ASP:H	1:D:204:THR:CG2	1.96	0.76
1:C:40:ASP:OD1	1:C:42:ARG:HG2	1.85	0.76
1:A:82:CYS:CA	1:A:86:ALA:HB3	2.16	0.76
1:B:69:GLN:NE2	1:B:151:GLU:H	1.80	0.75
1:C:337:VAL:HG21	1:C:355:ILE:HD13	1.66	0.75
1:C:460:LYS:O	1:C:461:THR:CB	2.26	0.75
1:B:69:GLN:HE22	1:B:151:GLU:N	1.80	0.74
1:B:358:PRO:O	1:B:363:LYS:HD3	1.88	0.74

Continued on next page...

Continued from previous page...

Atom-1	Atom-2	Distance(Å)	Clash(Å)
1:C:122:ILE:O	1:C:125:VAL:HG12	1.86	0.74
1:A:499:GLU:HB2	1:A:503:ASN:ND2	2.03	0.74
1:C:417:ILE:HG22	1:C:455:ILE:HG22	1.71	0.73
1:B:273:ILE:HG22	1:B:276:SER:HB2	1.70	0.73
1:D:338:ASN:HD21	1:D:342:GLN:NE2	1.87	0.72
1:C:416:THR:HG22	1:C:523:LEU:HG	1.70	0.72
1:A:160:VAL:HG11	1:A:325:LEU:HD21	1.70	0.72
1:B:337:VAL:HG21	1:B:355:ILE:HD13	1.72	0.72
1:C:355:ILE:O	1:C:355:ILE:HG22	1.89	0.72
1:A:412:HIS:HD2	1:A:458:ASP:OD2	1.72	0.72
1:D:247:GLU:HB2	1:D:250:LYS:HE2	1.71	0.72
1:B:355:ILE:HG22	1:B:355:ILE:O	1.89	0.71
1:B:74:ARG:O	1:B:155:ASN:HA	1.89	0.71
1:B:458:ASP:O	1:B:462:ARG:HA	1.91	0.71
1:D:82:CYS:CA	1:D:86:ALA:HB3	2.21	0.71
1:A:337:VAL:HG21	1:A:355:ILE:HD13	1.73	0.71
1:B:432:PRO:O	1:B:450:SER:HB2	1.90	0.71
1:D:82:CYS:HB3	1:D:83:PRO:HD3	1.70	0.71
1:A:338:ASN:HD21	1:A:342:GLN:NE2	1.88	0.71
1:B:275:GLY:O	1:B:297:PRO:HD3	1.90	0.71
1:D:328:ASP:O	1:D:329:LEU:HD23	1.91	0.70
1:C:201:ASP:H	1:C:204:THR:CG2	2.03	0.70
1:A:339:GLU:O	1:A:381:SER:HA	1.92	0.70
1:C:200:PHE:HD1	1:C:204:THR:HG23	1.55	0.70
1:B:82:CYS:HA	1:B:86:ALA:HB3	1.71	0.70
1:D:432:PRO:O	1:D:450:SER:HB2	1.91	0.70
1:A:358:PRO:O	1:A:363:LYS:HD3	1.92	0.69
1:A:490:THR:OG1	1:A:493:GLU:HG3	1.92	0.69
1:A:82:CYS:HB3	1:A:83:PRO:HD3	1.73	0.69
1:B:350:ALA:O	1:B:355:ILE:HD11	1.92	0.69
1:C:462:ARG:HB3	1:C:520:LEU:HD11	1.75	0.69
1:C:358:PRO:O	1:C:363:LYS:HD3	1.93	0.69
1:D:227:VAL:CG1	1:D:393:THR:HG22	2.22	0.68
1:B:82:CYS:HB3	1:B:83:PRO:CD	2.23	0.68
1:C:12:THR:HG22	1:C:14:ASN:H	1.58	0.68
1:A:328:ASP:HB3	1:A:336:LEU:HD12	1.76	0.68
1:B:14:ASN:O	1:B:18:THR:HG23	1.93	0.68
1:D:355:ILE:HG22	1:D:355:ILE:O	1.93	0.68
1:A:12:THR:HG22	1:A:14:ASN:H	1.58	0.68
1:C:165:THR:HG22	1:C:174:LYS:CG	2.23	0.68
1:B:352:GLY:HA3	2:B:524:FAD:O2P	1.92	0.68
1:D:338:ASN:HD21	1:D:342:GLN:HE21	1.39	0.68

Continued on next page...

Continued from previous page...

Atom-1	Atom-2	Distance(Å)	Clash(Å)
1:D:122:ILE:O	1:D:125:VAL:HG12	1.93	0.68
1:C:5:ASN:ND2	1:C:7:ARG:HB2	2.09	0.67
1:C:476:ASP:O	1:C:479:GLN:HG3	1.93	0.67
1:D:200:PHE:HD1	1:D:204:THR:HG23	1.60	0.67
1:A:192:PRO:HG2	1:A:280:ARG:HB2	1.77	0.67
1:C:350:ALA:O	1:C:355:ILE:HD11	1.95	0.67
1:B:12:THR:HG22	1:B:14:ASN:H	1.59	0.66
1:C:352:GLY:HA3	2:C:524:FAD:O2P	1.95	0.66
1:C:87:CYS:HA	1:C:90:HIS:HD2	1.61	0.66
1:D:373:ARG:HH21	1:D:380:ILE:HG12	1.59	0.66
1:B:126:VAL:O	1:B:130:ARG:HG3	1.96	0.66
1:D:227:VAL:HG11	1:D:393:THR:HG22	1.77	0.66
1:A:338:ASN:OD1	1:A:342:GLN:HB2	1.96	0.66
1:C:49:ILE:HG22	1:C:182:VAL:HG23	1.78	0.66
1:D:378:GLU:HB3	1:D:380:ILE:HD13	1.78	0.65
1:C:497:MET:SD	1:D:483:VAL:HG21	2.37	0.65
1:D:338:ASN:OD1	1:D:342:GLN:HB2	1.97	0.65
1:B:400:LEU:HD11	1:B:485:ILE:HD12	1.79	0.65
1:C:247:GLU:HB2	1:C:250:LYS:HE2	1.79	0.65
1:D:454:LYS:HG2	1:D:455:ILE:N	2.12	0.65
1:A:417:ILE:HG22	1:A:455:ILE:HG22	1.77	0.65
1:C:337:VAL:HA	1:C:342:GLN:O	1.97	0.65
1:A:115:MET:O	1:A:118:LYS:HB3	1.97	0.65
1:A:454:LYS:HG2	1:A:455:ILE:N	2.12	0.65
1:C:113:PRO:HG3	1:D:113:PRO:HD3	1.79	0.64
1:A:494:LEU:HD23	1:A:511:SER:OG	1.97	0.64
1:C:128:LEU:HD11	1:D:442:PHE:O	1.98	0.64
1:C:160:VAL:HG11	1:C:325:LEU:HD21	1.79	0.64
1:A:378:GLU:HB3	1:A:380:ILE:HD13	1.79	0.64
1:A:62:LEU:HB2	1:A:372:ALA:HB1	1.79	0.64
1:B:227:VAL:HG11	1:B:393:THR:HG22	1.80	0.64
1:A:224:LYS:NZ	1:A:360:GLU:OE2	2.23	0.64
1:D:499:GLU:HB2	1:D:503:ASN:ND2	2.13	0.63
1:A:122:ILE:O	1:A:125:VAL:HG12	1.99	0.63
1:C:227:VAL:HG13	1:C:265:MET:HE3	1.80	0.63
1:B:227:VAL:CG1	1:B:393:THR:HG22	2.28	0.63
1:D:267:GLU:OE1	1:D:448:HIS:HE1	1.82	0.63
1:D:300:GLU:HG2	1:D:301:MET:N	2.14	0.63
1:C:45:ASP:O	1:C:177:ASN:HB2	1.99	0.63
1:C:74:ARG:O	1:C:155:ASN:HA	1.99	0.62
1:C:113:PRO:HD3	1:D:113:PRO:HG3	1.79	0.62
1:B:191:VAL:CG2	1:B:192:PRO:HD2	2.29	0.62

Continued on next page...

Continued from previous page...

Atom-1	Atom-2	Distance(Å)	Clash(Å)
1:C:481:LEU:O	1:C:485:ILE:HG13	1.99	0.62
1:D:44:TYR:CD1	1:D:68:ARG:HG2	2.34	0.62
1:A:87:CYS:HA	1:A:90:HIS:HD2	1.63	0.62
1:C:126:VAL:O	1:C:130:ARG:HG3	2.00	0.62
1:B:473:GLY:O	1:B:504:PRO:HG2	1.98	0.62
1:C:389:ASP:HB3	1:C:399:PHE:CE1	2.34	0.62
1:C:12:THR:HB	1:C:15:GLN:HG3	1.81	0.62
1:A:300:GLU:HG2	1:A:301:MET:N	2.14	0.62
1:D:74:ARG:HG3	2:D:524:FAD:C2A	2.29	0.62
1:C:458:ASP:O	1:C:462:ARG:HA	2.00	0.62
1:A:160:VAL:O	1:A:324:ILE:HG21	2.00	0.61
1:C:279:THR:H	1:C:294:ALA:HA	1.66	0.61
1:A:499:GLU:HB2	1:A:503:ASN:HD22	1.63	0.61
1:B:462:ARG:HB3	1:B:520:LEU:HD11	1.82	0.61
1:C:300:GLU:HG2	1:C:301:MET:N	2.15	0.61
1:A:416:THR:HG22	1:A:523:LEU:HG	1.81	0.61
1:B:300:GLU:HG2	1:B:301:MET:N	2.16	0.61
1:B:352:GLY:CA	2:B:524:FAD:O2P	2.49	0.61
1:C:499:GLU:HB2	1:C:503:ASN:ND2	2.16	0.61
1:C:476:ASP:OD1	1:D:503:ASN:HB2	2.00	0.60
1:B:182:VAL:HG12	1:B:317:ARG:HB2	1.83	0.60
1:B:24:LEU:HD13	1:B:76:PRO:HG3	1.83	0.60
1:B:191:VAL:HG22	1:B:192:PRO:HD2	1.83	0.60
1:A:495:GLY:O	1:A:512:ARG:HD3	2.01	0.60
1:D:495:GLY:O	1:D:512:ARG:HB2	2.00	0.60
1:B:86:ALA:O	1:B:90:HIS:HB3	2.02	0.60
1:C:328:ASP:O	1:C:329:LEU:HD23	2.01	0.60
1:C:502:LEU:HG	1:D:91:HIS:CD2	2.36	0.60
1:C:454:LYS:HG2	1:C:455:ILE:N	2.16	0.60
1:C:16:TRP:O	1:C:20:ILE:HG13	2.02	0.60
1:A:389:ASP:HB3	1:A:399:PHE:CE1	2.37	0.60
1:B:327:LEU:HD23	1:B:345:VAL:CG2	2.32	0.60
1:D:182:VAL:CG1	1:D:317:ARG:HB2	2.31	0.60
1:A:400:LEU:HD12	1:A:400:LEU:O	2.02	0.59
1:D:165:THR:HG22	1:D:174:LYS:CG	2.30	0.59
1:A:227:VAL:HG11	1:A:393:THR:HG22	1.83	0.59
1:C:353:ASP:OD2	2:C:524:FAD:H5'2	2.02	0.59
1:D:400:LEU:HD12	1:D:400:LEU:C	2.22	0.59
1:D:328:ASP:HB3	1:D:336:LEU:HD12	1.84	0.59
1:C:417:ILE:HG22	1:C:455:ILE:CG2	2.32	0.59
1:B:273:ILE:CG2	1:B:276:SER:HB2	2.31	0.59
1:B:338:ASN:HD21	1:B:342:GLN:HE21	1.48	0.59

Continued on next page...

Continued from previous page...

Atom-1	Atom-2	Distance(Å)	Clash(Å)
1:B:378:GLU:HB3	1:B:380:ILE:HD13	1.84	0.59
1:A:60:ALA:HA	1:A:150:LEU:HD21	1.85	0.59
1:C:191:VAL:CG2	1:C:192:PRO:HD2	2.32	0.59
1:C:503:ASN:HB2	1:D:476:ASP:OD1	2.03	0.59
1:D:243:LEU:HD22	1:D:276:SER:OG	2.03	0.59
1:A:497:MET:SD	1:B:483:VAL:HG21	2.42	0.59
1:C:353:ASP:HB3	1:C:359:MET:SD	2.43	0.59
1:D:217:VAL:HG22	1:D:307:PHE:HD2	1.68	0.59
1:A:191:VAL:HG22	1:A:280:ARG:HA	1.85	0.58
1:D:12:THR:HG22	1:D:14:ASN:H	1.67	0.58
1:D:417:ILE:HG22	1:D:455:ILE:CG2	2.33	0.58
1:C:89:PRO:HB3	1:C:129:PHE:CE1	2.38	0.58
1:B:264:ARG:HG2	1:B:264:ARG:HH11	1.69	0.58
1:B:125:VAL:HG11	1:B:232:PHE:HZ	1.65	0.58
1:A:267:GLU:OE1	1:A:448:HIS:HE1	1.86	0.58
1:C:501:PHE:O	2:D:524:FAD:N3	2.34	0.58
1:B:476:ASP:O	1:B:479:GLN:HG3	2.02	0.58
1:A:180:LEU:N	1:A:349:TYR:O	2.32	0.58
1:D:191:VAL:HG22	1:D:192:PRO:HD2	1.84	0.58
1:A:95:ASP:OD2	1:B:438:MET:HG2	2.02	0.58
1:A:338:ASN:HD21	1:A:342:GLN:HE21	1.49	0.58
1:C:492:ASP:OD1	1:C:515:ALA:HB1	2.03	0.58
1:A:432:PRO:O	1:A:450:SER:HB2	2.03	0.58
1:D:160:VAL:HG11	1:D:325:LEU:HD21	1.85	0.58
1:C:463:LYS:O	1:C:465:LEU:HD13	2.03	0.58
1:A:192:PRO:HG2	1:A:280:ARG:CB	2.33	0.58
1:C:74:ARG:HG3	2:C:524:FAD:C2A	2.34	0.58
1:C:95:ASP:OD2	1:D:438:MET:HB2	2.03	0.58
1:A:355:ILE:HG22	1:A:355:ILE:O	2.04	0.58
1:B:277:ASN:O	1:B:294:ALA:HB1	2.04	0.58
1:A:90:HIS:HE1	1:A:392:HIS:HD2	1.52	0.57
1:B:412:HIS:HD2	1:B:458:ASP:OD2	1.87	0.57
1:B:328:ASP:HB3	1:B:336:LEU:HD12	1.85	0.57
1:D:89:PRO:HB3	1:D:129:PHE:CZ	2.39	0.57
1:B:389:ASP:HB3	1:B:399:PHE:CE1	2.38	0.57
1:A:489:LEU:HD21	1:A:494:LEU:HD13	1.86	0.57
1:D:300:GLU:HG2	1:D:301:MET:H	1.68	0.57
1:C:501:PHE:CD1	1:C:502:LEU:HA	2.38	0.57
1:C:86:ALA:O	1:C:90:HIS:HB3	2.03	0.57
1:B:115:MET:O	1:B:118:LYS:HB3	2.03	0.57
1:D:420:PRO:HB3	1:D:431:LEU:O	2.04	0.57
1:A:334:GLU:HG2	1:A:334:GLU:O	2.03	0.57

Continued on next page...

Continued from previous page...

Atom-1	Atom-2	Distance(Å)	Clash(Å)
1:B:206:VAL:HG23	1:B:207:GLU:OE2	2.03	0.57
1:C:302:ARG:HH12	1:C:304:GLU:HG3	1.69	0.57
1:C:82:CYS:HB3	1:C:83:PRO:HD3	1.86	0.57
1:C:40:ASP:HB3	1:C:68:ARG:NH1	2.20	0.57
1:A:247:GLU:HB2	1:A:250:LYS:HE2	1.87	0.57
1:A:90:HIS:CE1	1:A:392:HIS:HD2	2.22	0.57
1:B:192:PRO:HG2	1:B:280:ARG:HB2	1.87	0.57
1:A:460:LYS:O	1:A:461:THR:CB	2.51	0.57
1:B:84:HIS:ND1	1:B:133:ARG:HD2	2.20	0.57
1:A:123:LYS:HA	1:A:209:LEU:HD23	1.87	0.56
1:C:461:THR:O	1:C:461:THR:HG22	2.03	0.56
1:D:126:VAL:O	1:D:130:ARG:HG3	2.05	0.56
1:C:182:VAL:HG12	1:C:317:ARG:HB2	1.87	0.56
1:B:419:MET:HB3	1:B:432:PRO:HB3	1.85	0.56
1:C:160:VAL:O	1:C:324:ILE:HG21	2.05	0.56
1:A:390:PHE:HA	1:A:397:VAL:O	2.05	0.56
1:D:403:GLY:HA2	1:D:468:HIS:NE2	2.20	0.56
1:D:459:ALA:O	1:D:460:LYS:HB2	2.04	0.56
1:B:338:ASN:HD21	1:B:342:GLN:NE2	2.02	0.56
1:A:191:VAL:CG2	1:A:192:PRO:HD2	2.35	0.56
1:A:416:THR:CG2	1:A:523:LEU:HG	2.36	0.56
1:C:245:ARG:O	1:C:275:GLY:HA2	2.05	0.56
1:C:62:LEU:HB2	1:C:372:ALA:HB1	1.88	0.56
1:B:247:GLU:HB2	1:B:250:LYS:HE2	1.88	0.56
1:A:423:THR:HB	1:B:13:ILE:HD12	1.87	0.56
1:C:192:PRO:HG2	1:C:280:ARG:HB2	1.88	0.56
1:D:370:TYR:CD1	1:D:382:TYR:HB2	2.41	0.56
1:C:378:GLU:HB3	1:C:380:ILE:HD13	1.87	0.56
1:D:358:PRO:O	1:D:363:LYS:HD3	2.05	0.56
1:C:483:VAL:HG21	1:D:497:MET:SD	2.45	0.56
1:B:49:ILE:HG22	1:B:182:VAL:HG23	1.87	0.56
1:A:191:VAL:HG22	1:A:192:PRO:HD2	1.87	0.55
1:B:454:LYS:HG2	1:B:455:ILE:N	2.21	0.55
1:C:72:VAL:CG1	1:C:158:ALA:HB2	2.35	0.55
1:D:231:CYS:SG	1:D:393:THR:HA	2.46	0.55
1:A:179:ILE:HD11	1:A:351:VAL:HG11	1.88	0.55
1:C:509:GLN:HG2	1:C:510:LEU:H	1.70	0.55
1:C:182:VAL:HG13	2:C:524:FAD:C8A	2.36	0.55
1:A:90:HIS:CD2	2:A:524:FAD:H6	2.42	0.55
1:D:191:VAL:CG2	1:D:192:PRO:HD2	2.35	0.55
1:C:400:LEU:HD12	1:C:400:LEU:C	2.27	0.55
1:C:47:ILE:HG13	1:C:175:ALA:HB2	1.88	0.55

Continued on next page...

Continued from previous page...

Atom-1	Atom-2	Distance(Å)	Clash(Å)
1:D:82:CYS:HB3	1:D:83:PRO:CD	2.37	0.55
1:C:89:PRO:HB3	1:C:129:PHE:CZ	2.42	0.55
1:C:275:GLY:O	1:C:297:PRO:HD3	2.07	0.55
1:D:212:GLU:OE1	1:D:213:PRO:HD2	2.06	0.55
1:C:461:THR:O	1:C:461:THR:CG2	2.54	0.55
1:C:352:GLY:CA	2:C:524:FAD:O2P	2.55	0.55
1:D:403:GLY:HA2	1:D:468:HIS:HE2	1.72	0.55
1:B:255:ASN:HB2	1:B:405:GLU:OE1	2.07	0.55
1:B:400:LEU:C	1:B:400:LEU:HD12	2.28	0.54
1:D:89:PRO:HB3	1:D:129:PHE:CE1	2.42	0.54
1:A:227:VAL:CG1	1:A:393:THR:HG22	2.38	0.54
1:A:338:ASN:ND2	1:A:342:GLN:HE21	2.04	0.54
1:B:165:THR:HG22	1:B:174:LYS:CG	2.34	0.54
1:C:100:LEU:HB2	1:C:235:ALA:HB1	1.89	0.54
1:C:44:TYR:CD1	1:C:68:ARG:HG2	2.43	0.54
1:A:400:LEU:C	1:A:400:LEU:HD12	2.28	0.54
1:D:490:THR:OG1	1:D:493:GLU:HG3	2.07	0.54
1:A:13:ILE:HG21	1:A:139:ILE:HG12	1.89	0.54
1:A:499:GLU:OE2	1:A:512:ARG:NH2	2.39	0.54
1:A:165:THR:HG22	1:A:174:LYS:CG	2.33	0.54
1:C:217:VAL:HG22	1:C:307:PHE:HD2	1.73	0.54
1:A:400:LEU:HD11	1:A:485:ILE:CD1	2.38	0.54
1:D:171:LYS:N	1:D:171:LYS:HD2	2.23	0.54
1:C:82:CYS:N	1:C:86:ALA:HB3	2.23	0.54
1:D:73:ASP:OD1	2:D:524:FAD:H1B	2.07	0.54
1:B:481:LEU:O	1:B:485:ILE:HG13	2.07	0.54
1:D:286:ASN:HD22	1:D:286:ASN:N	2.06	0.54
1:C:339:GLU:O	1:C:381:SER:HA	2.08	0.54
1:B:90:HIS:HE1	1:B:392:HIS:HD2	1.54	0.54
1:C:20:ILE:O	1:C:24:LEU:HB2	2.08	0.54
1:C:300:GLU:HG2	1:C:301:MET:H	1.71	0.54
1:D:5:ASN:ND2	1:D:7:ARG:HB2	2.23	0.54
1:A:69:GLN:HE22	1:A:151:GLU:N	1.86	0.53
1:D:182:VAL:HG12	1:D:317:ARG:HB2	1.89	0.53
1:B:396:GLU:HB2	1:B:471:GLY:O	2.08	0.53
1:B:217:VAL:HG22	1:B:307:PHE:CD2	2.37	0.53
1:C:416:THR:CG2	1:C:523:LEU:HG	2.37	0.53
1:A:352:GLY:O	1:A:363:LYS:NZ	2.34	0.53
1:C:350:ALA:C	1:C:355:ILE:HD11	2.29	0.53
1:A:393:THR:OG1	1:A:394:HIS:N	2.41	0.53
1:B:90:HIS:CE1	1:B:392:HIS:HD2	2.27	0.53
1:C:191:VAL:HG22	1:C:280:ARG:HA	1.90	0.53

Continued on next page...

Continued from previous page...

Atom-1	Atom-2	Distance(Å)	Clash(Å)
1:B:391:LEU:C	1:B:391:LEU:HD12	2.29	0.53
1:B:350:ALA:C	1:B:355:ILE:HD11	2.29	0.53
1:C:509:GLN:HG2	1:C:510:LEU:N	2.23	0.53
1:C:116:THR:O	1:C:117:GLU:HB2	2.09	0.53
1:D:218:VAL:HG22	1:D:303:ILE:HD13	1.91	0.53
1:B:88:VAL:HB	1:B:89:PRO:CD	2.38	0.53
1:D:74:ARG:O	1:D:155:ASN:HA	2.09	0.53
1:D:338:ASN:ND2	1:D:342:GLN:HE21	2.06	0.53
1:A:461:THR:O	1:A:463:LYS:N	2.42	0.53
1:C:189:LEU:HD21	1:C:278:VAL:HB	1.91	0.53
1:B:20:ILE:O	1:B:24:LEU:HB2	2.09	0.53
1:A:135:GLY:O	1:A:139:ILE:HG13	2.09	0.53
1:D:87:CYS:HA	2:D:524:FAD:N5	2.24	0.53
1:D:412:HIS:HD2	1:D:458:ASP:OD2	1.91	0.53
1:D:337:VAL:HA	1:D:342:GLN:O	2.09	0.52
1:C:469:HIS:ND1	1:C:469:HIS:C	2.61	0.52
1:D:264:ARG:HG2	1:D:264:ARG:NH1	2.24	0.52
1:D:42:ARG:HG3	1:D:68:ARG:HD2	1.91	0.52
1:A:417:ILE:HD13	1:A:514:ARG:HE	1.75	0.52
1:D:260:TYR:O	1:D:264:ARG:HG2	2.09	0.52
1:A:86:ALA:O	1:A:90:HIS:HB3	2.10	0.52
1:D:374:ASN:HA	1:D:378:GLU:O	2.10	0.52
1:B:400:LEU:HD11	1:B:485:ILE:CD1	2.39	0.52
1:B:461:THR:O	1:B:463:LYS:N	2.43	0.52
1:B:499:GLU:HB2	1:B:503:ASN:HD22	1.71	0.52
1:B:264:ARG:NH1	1:B:264:ARG:HG2	2.24	0.52
1:D:419:MET:HA	1:D:420:PRO:C	2.30	0.52
1:D:325:LEU:HB2	1:D:327:LEU:HD21	1.92	0.52
1:A:373:ARG:NH2	1:A:378:GLU:OE1	2.42	0.52
1:C:420:PRO:HB3	1:C:431:LEU:O	2.10	0.52
1:C:462:ARG:O	1:C:490:THR:HA	2.10	0.52
1:B:122:ILE:O	1:B:125:VAL:HG12	2.09	0.52
1:B:189:LEU:HD21	1:B:278:VAL:HB	1.92	0.51
1:D:362:PHE:CD1	1:D:363:LYS:N	2.78	0.51
1:C:123:LYS:HA	1:C:209:LEU:HD23	1.93	0.51
1:C:267:GLU:OE1	1:C:448:HIS:HE1	1.92	0.51
1:A:89:PRO:HB3	1:A:129:PHE:CZ	2.46	0.51
1:C:391:LEU:C	1:C:391:LEU:HD12	2.31	0.51
1:B:499:GLU:HB2	1:B:503:ASN:HD21	1.76	0.51
1:D:232:PHE:O	1:D:236:THR:HG23	2.10	0.51
1:B:483:VAL:O	1:B:487:GLN:HG3	2.10	0.51
1:D:90:HIS:HD2	2:D:524:FAD:N5	2.08	0.51

Continued on next page...

Continued from previous page...

Atom-1	Atom-2	Distance(Å)	Clash(Å)
1:A:247:GLU:HA	1:A:247:GLU:OE2	2.10	0.51
1:D:166:VAL:CG2	1:D:178:LEU:HD21	2.40	0.51
1:D:337:VAL:CG2	1:D:355:ILE:HD13	2.37	0.51
1:A:337:VAL:HA	1:A:342:GLN:O	2.10	0.51
1:C:490:THR:OG1	1:C:493:GLU:HG3	2.11	0.51
1:C:247:GLU:HA	1:C:247:GLU:OE2	2.10	0.51
1:B:300:GLU:HG2	1:B:301:MET:H	1.75	0.51
1:C:332:LYS:HB3	1:C:334:GLU:OE1	2.09	0.51
1:D:499:GLU:HB2	1:D:503:ASN:HD22	1.75	0.51
1:C:370:TYR:CD1	1:C:382:TYR:HB2	2.46	0.51
1:A:166:VAL:CG2	1:A:178:LEU:HD21	2.41	0.51
1:B:302:ARG:HH12	1:B:304:GLU:HG3	1.76	0.51
1:C:12:THR:HG23	1:D:424:GLU:OE2	2.10	0.51
1:A:419:MET:HB3	1:A:432:PRO:HB3	1.92	0.51
1:D:382:TYR:CE2	1:D:384:PRO:HD3	2.46	0.51
1:B:339:GLU:O	1:B:381:SER:HA	2.11	0.51
1:B:337:VAL:HA	1:B:342:GLN:O	2.11	0.51
1:B:373:ARG:NH2	1:B:378:GLU:OE1	2.44	0.51
1:B:267:GLU:OE1	1:B:448:HIS:HE1	1.93	0.51
1:C:45:ASP:HA	1:C:176:LYS:HE3	1.90	0.51
1:A:179:ILE:HD12	1:A:371:ALA:CB	2.41	0.50
1:D:264:ARG:HH11	1:D:264:ARG:HG2	1.75	0.50
1:A:88:VAL:HB	1:A:89:PRO:CD	2.41	0.50
1:D:160:VAL:O	1:D:324:ILE:HG21	2.11	0.50
1:D:415:VAL:HG23	1:D:457:ILE:HB	1.94	0.50
1:D:90:HIS:CD2	2:D:524:FAD:N5	2.79	0.50
1:C:24:LEU:HD13	1:C:76:PRO:CG	2.41	0.50
1:C:47:ILE:HG13	1:C:175:ALA:CB	2.42	0.50
1:D:339:GLU:O	1:D:381:SER:HA	2.12	0.50
1:D:334:GLU:HG2	1:D:334:GLU:O	2.11	0.50
1:B:217:VAL:CG2	1:B:307:PHE:HD2	2.20	0.50
1:D:417:ILE:HD13	1:D:514:ARG:HE	1.77	0.50
1:B:391:LEU:O	1:B:391:LEU:HD12	2.12	0.50
1:A:72:VAL:CG1	1:A:158:ALA:HB2	2.41	0.50
1:C:12:THR:HG22	1:C:14:ASN:N	2.26	0.50
1:B:159:LYS:HB2	1:B:167:GLU:HB3	1.93	0.50
1:D:280:ARG:HG2	1:D:280:ARG:HH11	1.77	0.50
1:C:400:LEU:HD23	1:C:478:PHE:CD2	2.46	0.50
1:B:416:THR:HG22	1:B:523:LEU:HG	1.92	0.50
1:D:416:THR:HG22	1:D:523:LEU:HG	1.92	0.50
1:A:91:HIS:HE1	2:A:524:FAD:O4	1.95	0.50
1:D:461:THR:HG22	1:D:463:LYS:H	1.77	0.50

Continued on next page...

Continued from previous page...

Atom-1	Atom-2	Distance(Å)	Clash(Å)
1:B:182:VAL:CG1	1:B:182:VAL:O	2.60	0.50
1:D:88:VAL:HB	1:D:89:PRO:CD	2.41	0.50
1:A:352:GLY:CA	2:A:524:FAD:O2P	2.61	0.49
1:B:125:VAL:HG11	1:B:232:PHE:CZ	2.47	0.49
1:A:420:PRO:HB3	1:A:431:LEU:O	2.12	0.49
1:D:390:PHE:HA	1:D:397:VAL:O	2.11	0.49
1:C:362:PHE:CD1	1:C:363:LYS:N	2.80	0.49
1:A:419:MET:HB2	1:A:453:GLN:HG2	1.95	0.49
1:B:320:GLU:O	1:B:324:ILE:HG13	2.12	0.49
1:A:24:LEU:HD21	1:A:84:HIS:CE1	2.47	0.49
1:D:82:CYS:N	1:D:86:ALA:HB3	2.26	0.49
1:A:300:GLU:HG2	1:A:301:MET:H	1.75	0.49
1:A:43:GLU:HG2	1:A:44:TYR:N	2.26	0.49
1:C:200:PHE:CD1	1:C:204:THR:HG23	2.43	0.49
1:D:31:GLU:O	1:D:155:ASN:ND2	2.33	0.49
1:B:231:CYS:SG	1:B:393:THR:HA	2.53	0.49
1:C:191:VAL:HG22	1:C:192:PRO:HD2	1.94	0.49
1:D:509:GLN:HG2	1:D:510:LEU:H	1.77	0.49
1:B:47:ILE:HG13	1:B:175:ALA:HB2	1.94	0.49
1:C:73:ASP:OD1	2:C:524:FAD:O3B	2.26	0.49
1:C:91:HIS:CD2	1:D:502:LEU:HG	2.47	0.49
1:A:217:VAL:HG13	1:A:307:PHE:CD2	2.48	0.49
1:D:125:VAL:HG11	1:D:232:PHE:HZ	1.77	0.49
1:C:278:VAL:HA	1:C:294:ALA:HB2	1.93	0.49
1:B:327:LEU:HD23	1:B:345:VAL:HG21	1.95	0.49
1:D:206:VAL:HG23	1:D:207:GLU:OE2	2.12	0.49
1:D:115:MET:O	1:D:118:LYS:HB3	2.12	0.49
1:D:71:ILE:HB	1:D:152:TYR:HB3	1.94	0.49
1:A:337:VAL:HG11	1:A:350:ALA:HB3	1.95	0.49
1:C:192:PRO:HG2	1:C:280:ARG:CB	2.42	0.49
1:B:200:PHE:HD1	1:B:204:THR:HG23	1.78	0.49
1:D:90:HIS:CE1	1:D:392:HIS:HD2	2.30	0.49
1:C:125:VAL:HG11	1:C:232:PHE:HZ	1.78	0.49
1:C:278:VAL:HA	1:C:294:ALA:CB	2.42	0.49
1:B:24:LEU:HD13	1:B:76:PRO:CG	2.42	0.49
1:B:148:LEU:HB2	1:B:150:LEU:HG	1.93	0.49
1:A:82:CYS:HB3	1:A:83:PRO:CD	2.41	0.48
1:C:163:ASN:ND2	1:C:164:HIS:NE2	2.61	0.48
1:A:12:THR:HG22	1:A:14:ASN:N	2.27	0.48
1:C:16:TRP:HZ3	1:C:33:ILE:HD13	1.78	0.48
1:D:416:THR:CG2	1:D:523:LEU:HG	2.42	0.48
1:B:417:ILE:HD13	1:B:514:ARG:HE	1.78	0.48

Continued on next page...

Continued from previous page...

Atom-1	Atom-2	Distance(Å)	Clash(Å)
1:B:253:LYS:HE3	1:B:406:GLU:OE1	2.13	0.48
1:B:460:LYS:O	1:B:461:THR:CB	2.49	0.48
1:B:182:VAL:HG13	2:B:524:FAD:C8A	2.44	0.48
1:B:361:MET:HG2	2:B:524:FAD:C2	2.43	0.48
1:D:101:MET:HG3	1:D:268:GLN:OE1	2.13	0.48
1:A:82:CYS:N	1:A:86:ALA:HB3	2.27	0.48
1:B:355:ILE:CG2	1:B:355:ILE:O	2.61	0.48
1:A:85:ASN:HA	1:A:89:PRO:HG3	1.95	0.48
1:C:111:TRP:CD2	1:D:100:LEU:HD21	2.49	0.48
1:D:90:HIS:CD2	2:D:524:FAD:H6	2.49	0.48
1:C:101:MET:HG3	1:C:268:GLN:OE1	2.13	0.48
1:C:502:LEU:HG	1:D:91:HIS:CG	2.49	0.48
1:A:337:VAL:CG1	1:A:350:ALA:HB3	2.43	0.48
1:C:227:VAL:CG1	1:C:393:THR:HG22	2.43	0.48
1:A:289:VAL:HG12	1:A:305:THR:O	2.14	0.48
1:D:87:CYS:HA	1:D:90:HIS:HD2	1.79	0.48
1:A:499:GLU:OE1	1:B:362:PHE:HB2	2.14	0.48
1:D:448:HIS:H	1:D:448:HIS:CD2	2.31	0.48
1:A:16:TRP:CD1	1:A:142:PHE:HB2	2.48	0.48
1:A:217:VAL:HG22	1:A:307:PHE:HD2	1.79	0.48
1:C:166:VAL:HG12	1:C:167:GLU:N	2.29	0.48
1:B:334:GLU:HG2	1:B:334:GLU:O	2.13	0.48
1:C:162:ASP:OD2	1:C:162:ASP:C	2.51	0.48
1:D:74:ARG:HG3	2:D:524:FAD:N1A	2.28	0.48
1:B:247:GLU:OE2	1:B:247:GLU:HA	2.14	0.48
1:A:148:LEU:CB	1:A:150:LEU:HG	2.44	0.48
1:B:264:ARG:O	1:B:267:GLU:HB3	2.14	0.48
1:D:462:ARG:HB3	1:D:491:VAL:HG12	1.95	0.48
1:B:495:GLY:HA2	1:B:508:ILE:O	2.14	0.48
1:B:71:ILE:HB	1:B:152:TYR:HB3	1.96	0.48
1:B:57:PHE:CD2	1:B:365:ARG:HD2	2.48	0.48
1:D:391:LEU:HD12	1:D:391:LEU:C	2.34	0.48
1:D:200:PHE:CD1	1:D:204:THR:HG23	2.46	0.48
1:D:164:HIS:O	1:D:174:LYS:HA	2.14	0.48
1:A:417:ILE:HG22	1:A:455:ILE:CG2	2.44	0.48
1:C:46:ALA:HA	1:C:177:ASN:O	2.14	0.48
1:A:513:LEU:HD11	1:B:60:ALA:HB1	1.95	0.48
1:D:245:ARG:O	1:D:275:GLY:HA2	2.14	0.48
1:C:165:THR:HA	1:C:173:PHE:O	2.14	0.47
1:B:463:LYS:O	1:B:465:LEU:HD13	2.14	0.47
1:D:73:ASP:OD2	2:D:524:FAD:O2B	2.25	0.47
1:B:192:PRO:HG2	1:B:280:ARG:CB	2.44	0.47

Continued on next page...

Continued from previous page...

Atom-1	Atom-2	Distance(Å)	Clash(Å)
1:C:504:PRO:HD2	1:D:476:ASP:HB2	1.95	0.47
1:C:72:VAL:HG11	1:C:158:ALA:HB2	1.95	0.47
1:D:501:PHE:CD1	1:D:502:LEU:HA	2.49	0.47
1:D:42:ARG:NH1	1:D:66:GLY:O	2.47	0.47
1:D:499:GLU:OE2	1:D:512:ARG:NH2	2.47	0.47
1:B:148:LEU:CB	1:B:150:LEU:HG	2.44	0.47
1:A:388:PRO:HD3	1:A:482:ASN:ND2	2.28	0.47
1:A:423:THR:HB	1:B:13:ILE:CD1	2.43	0.47
1:A:286:ASN:N	1:A:286:ASN:HD22	2.11	0.47
1:A:362:PHE:CD1	1:A:363:LYS:N	2.83	0.47
1:A:420:PRO:HD3	1:A:432:PRO:HD3	1.96	0.47
1:B:495:GLY:O	1:B:512:ARG:HD3	2.15	0.47
1:C:473:GLY:HA2	1:D:473:GLY:HA2	1.97	0.47
1:C:328:ASP:HB3	1:C:336:LEU:HD12	1.96	0.47
1:A:446:THR:O	1:A:449:MET:HB2	2.15	0.47
1:D:20:ILE:O	1:D:24:LEU:HB2	2.15	0.47
1:A:100:LEU:HB2	1:A:235:ALA:HB1	1.95	0.47
1:A:185:GLY:HA2	1:A:317:ARG:NH2	2.28	0.47
1:B:490:THR:OG1	1:B:493:GLU:HG3	2.14	0.47
1:D:400:LEU:HD11	1:D:485:ILE:CD1	2.45	0.47
1:D:107:SER:OG	1:D:114:ASP:HA	2.14	0.47
1:B:78:LEU:H	1:B:141:ASN:HD21	1.63	0.47
1:D:162:ASP:OD2	1:D:165:THR:N	2.46	0.47
1:C:24:LEU:HD13	1:C:76:PRO:HG3	1.96	0.47
1:B:24:LEU:HD21	1:B:84:HIS:CE1	2.50	0.47
1:B:279:THR:H	1:B:294:ALA:HA	1.79	0.47
1:C:217:VAL:HG22	1:C:307:PHE:CD2	2.50	0.47
1:D:189:LEU:HD21	1:D:278:VAL:HB	1.96	0.47
1:D:402:MET:HA	1:D:406:GLU:OE1	2.14	0.47
1:A:101:MET:HG3	1:A:268:GLN:OE1	2.14	0.47
1:A:502:LEU:HG	1:B:91:HIS:CE1	2.49	0.47
1:C:164:HIS:O	1:C:174:LYS:HA	2.15	0.47
1:C:31:GLU:O	1:C:155:ASN:ND2	2.42	0.47
1:B:327:LEU:HD23	1:B:345:VAL:HG23	1.96	0.47
1:A:45:ASP:HA	1:A:176:LYS:HE3	1.97	0.47
1:B:160:VAL:HG11	1:B:325:LEU:HD21	1.97	0.47
1:B:346:PRO:O	1:B:347:ASN:HB2	2.15	0.47
1:A:164:HIS:O	1:A:174:LYS:HA	2.15	0.47
1:B:374:ASN:HA	1:B:378:GLU:O	2.14	0.47
1:C:391:LEU:O	1:C:391:LEU:HD12	2.14	0.47
1:A:44:TYR:CD1	1:A:68:ARG:HG2	2.49	0.47
1:A:217:VAL:HG13	1:A:307:PHE:HD2	1.79	0.47

Continued on next page...

Continued from previous page...

Atom-1	Atom-2	Distance(Å)	Clash(Å)
1:B:78:LEU:HB2	1:B:140:MET:HG3	1.97	0.47
1:D:90:HIS:HE1	1:D:392:HIS:HD2	1.62	0.46
1:A:42:ARG:NH1	1:A:66:GLY:O	2.48	0.46
1:A:72:VAL:HG11	1:A:158:ALA:HB2	1.97	0.46
1:A:385:LYS:O	1:A:386:ASN:HB2	2.14	0.46
1:D:346:PRO:O	1:D:347:ASN:HB2	2.15	0.46
1:A:372:ALA:O	1:A:375:VAL:HG22	2.16	0.46
1:A:498:ASP:OD2	1:B:366:LYS:NZ	2.39	0.46
1:A:322:ALA:HB2	1:A:329:LEU:HD21	1.97	0.46
1:C:227:VAL:HG13	1:C:265:MET:CE	2.44	0.46
1:A:345:VAL:HG13	1:A:346:PRO:HD2	1.97	0.46
1:A:129:PHE:CE1	1:A:133:ARG:HD3	2.50	0.46
1:D:60:ALA:HA	1:D:150:LEU:HD21	1.97	0.46
1:A:231:CYS:SG	1:A:393:THR:HA	2.55	0.46
1:D:126:VAL:HG11	1:D:209:LEU:CD2	2.46	0.46
1:B:278:VAL:HA	1:B:294:ALA:HB2	1.97	0.46
1:B:279:THR:HB	1:B:293:VAL:HG12	1.98	0.46
1:C:372:ALA:O	1:C:375:VAL:HG22	2.14	0.46
1:D:509:GLN:HG2	1:D:510:LEU:N	2.30	0.46
1:C:501:PHE:CG	1:C:502:LEU:HA	2.50	0.46
1:C:400:LEU:HD11	1:C:485:ILE:HD12	1.97	0.46
1:D:12:THR:HB	1:D:15:GLN:HG3	1.98	0.46
1:B:171:LYS:N	1:B:171:LYS:HD2	2.29	0.46
1:A:267:GLU:OE1	1:A:448:HIS:CE1	2.67	0.46
1:D:325:LEU:CB	1:D:327:LEU:HD21	2.45	0.46
1:A:16:TRP:HB3	1:A:138:GLY:HA2	1.97	0.46
1:B:245:ARG:HG3	1:B:277:ASN:OD1	2.15	0.46
1:C:284:ASP:OD2	1:C:290:GLN:HB2	2.16	0.46
1:C:521:VAL:O	1:C:522:SER:HB2	2.15	0.46
1:D:148:LEU:HB2	1:D:150:LEU:HG	1.98	0.46
1:D:385:LYS:O	1:D:386:ASN:HB2	2.15	0.46
1:C:461:THR:O	1:C:463:LYS:N	2.49	0.46
1:A:332:LYS:HB3	1:A:334:GLU:OE1	2.16	0.46
1:C:302:ARG:HH12	1:C:304:GLU:CG	2.28	0.46
1:C:352:GLY:C	1:C:354:LEU:H	2.19	0.46
1:B:191:VAL:HG22	1:B:280:ARG:HA	1.96	0.46
1:B:16:TRP:HB3	1:B:138:GLY:HA2	1.98	0.46
1:C:429:VAL:C	1:C:431:LEU:H	2.19	0.46
1:A:78:LEU:HD21	1:A:154:LEU:HD21	1.97	0.46
1:C:184:ALA:HB1	1:C:315:GLN:C	2.36	0.46
1:B:260:TYR:HE1	1:B:427:LEU:HD13	1.81	0.46
1:D:405:GLU:H	1:D:405:GLU:CD	2.19	0.46

Continued on next page...

Continued from previous page...

Atom-1	Atom-2	Distance(Å)	Clash(Å)
1:B:390:PHE:HA	1:B:397:VAL:O	2.16	0.46
1:C:85:ASN:HB2	1:C:203:ALA:HA	1.98	0.46
1:D:80:GLY:HA3	2:D:524:FAD:O2A	2.17	0.45
1:C:355:ILE:O	1:C:355:ILE:CG2	2.59	0.45
1:D:419:MET:HB3	1:D:432:PRO:HB3	1.96	0.45
1:A:424:GLU:HG3	1:A:425:ASN:ND2	2.30	0.45
1:D:286:ASN:N	1:D:286:ASN:ND2	2.64	0.45
1:A:275:GLY:O	1:A:297:PRO:HD3	2.16	0.45
1:A:429:VAL:O	1:A:447:ALA:HB1	2.15	0.45
1:B:284:ASP:OD2	1:B:290:GLN:HB2	2.16	0.45
1:D:186:PRO:HA	1:D:314:GLU:OE1	2.16	0.45
1:D:40:ASP:HB3	1:D:68:ARG:NH1	2.32	0.45
1:A:419:MET:HA	1:A:420:PRO:C	2.36	0.45
1:C:235:ALA:C	1:C:237:GLY:H	2.19	0.45
1:A:438:MET:HB2	1:B:95:ASP:OD2	2.17	0.45
1:C:459:ALA:O	1:C:460:LYS:HB2	2.17	0.45
1:D:481:LEU:O	1:D:485:ILE:HG13	2.17	0.45
1:B:339:GLU:HB2	1:B:381:SER:HB2	1.99	0.45
1:A:14:ASN:O	1:A:18:THR:HG23	2.17	0.45
1:D:455:ILE:HG22	1:D:455:ILE:O	2.17	0.45
1:B:12:THR:HG22	1:B:14:ASN:N	2.28	0.45
1:A:77:PHE:HD1	1:A:78:LEU:O	2.00	0.45
1:A:241:VAL:HG21	1:A:303:ILE:HD12	1.99	0.45
1:D:122:ILE:O	1:D:123:LYS:C	2.55	0.45
1:C:100:LEU:HD21	1:D:111:TRP:CD2	2.52	0.45
1:D:16:TRP:O	1:D:20:ILE:HG13	2.17	0.45
1:A:167:GLU:HG3	1:A:171:LYS:O	2.16	0.45
1:D:469:HIS:ND1	1:D:469:HIS:C	2.70	0.45
1:A:200:PHE:HD1	1:A:204:THR:HG23	1.81	0.45
1:D:73:ASP:HA	2:D:524:FAD:N3A	2.32	0.45
1:A:350:ALA:C	1:A:355:ILE:HD11	2.36	0.45
1:B:476:ASP:OD1	1:B:479:GLN:NE2	2.49	0.45
1:A:388:PRO:HG2	1:B:500:LEU:HD21	1.98	0.45
1:A:116:THR:O	1:A:117:GLU:HB2	2.17	0.45
1:A:352:GLY:HA3	2:A:524:FAD:O2P	2.16	0.45
1:C:419:MET:HA	1:C:420:PRO:C	2.36	0.45
1:D:235:ALA:C	1:D:237:GLY:H	2.19	0.45
1:D:224:LYS:NZ	1:D:360:GLU:OE2	2.33	0.45
1:D:203:ALA:O	1:D:206:VAL:HG22	2.16	0.45
1:D:489:LEU:HD21	1:D:494:LEU:HD13	1.99	0.45
1:C:182:VAL:O	1:C:182:VAL:CG1	2.65	0.44
1:A:429:VAL:C	1:A:431:LEU:H	2.20	0.44

Continued on next page...

Continued from previous page...

Atom-1	Atom-2	Distance(Å)	Clash(Å)
1:A:49:ILE:HG22	1:A:182:VAL:HG23	1.99	0.44
1:B:78:LEU:HB2	1:B:140:MET:CG	2.47	0.44
1:C:286:ASN:HD22	1:C:286:ASN:N	2.13	0.44
1:B:82:CYS:CA	1:B:86:ALA:HB3	2.42	0.44
1:A:318:SER:O	1:A:319:ALA:C	2.55	0.44
1:D:460:LYS:O	1:D:461:THR:CB	2.55	0.44
1:A:370:TYR:CD1	1:A:382:TYR:HB2	2.52	0.44
1:B:417:ILE:O	1:B:417:ILE:HG23	2.17	0.44
1:C:288:ARG:HG2	1:C:289:VAL:N	2.32	0.44
1:C:461:THR:O	1:C:463:LYS:HG3	2.17	0.44
1:C:502:LEU:HD23	1:C:502:LEU:N	2.31	0.44
1:D:231:CYS:SG	1:D:265:MET:HE3	2.58	0.44
1:C:43:GLU:HG2	1:C:44:TYR:N	2.32	0.44
1:C:337:VAL:CG2	1:C:355:ILE:HD13	2.42	0.44
1:B:296:THR:O	1:B:297:PRO:C	2.56	0.44
1:C:186:PRO:HA	1:C:314:GLU:OE1	2.17	0.44
1:C:13:ILE:CD1	1:D:423:THR:HB	2.47	0.44
1:B:196:ALA:O	1:B:199:VAL:HG23	2.17	0.44
1:D:284:ASP:OD2	1:D:290:GLN:HB2	2.17	0.44
1:D:393:THR:OG1	1:D:394:HIS:N	2.50	0.44
1:D:61:TYR:CD2	1:D:369:CYS:SG	3.10	0.44
1:C:6:ALA:O	1:C:7:ARG:C	2.56	0.44
1:A:16:TRP:O	1:A:20:ILE:HG13	2.18	0.44
1:A:206:VAL:HG23	1:A:207:GLU:OE2	2.17	0.44
1:A:107:SER:OG	1:A:114:ASP:HA	2.17	0.44
1:C:495:GLY:O	1:C:512:ARG:HB2	2.18	0.44
1:D:45:ASP:O	1:D:177:ASN:HB2	2.16	0.44
1:C:125:VAL:HG13	1:C:126:VAL:N	2.33	0.44
1:A:513:LEU:HD11	1:B:60:ALA:CB	2.48	0.44
1:A:57:PHE:CE1	1:B:512:ARG:HG2	2.53	0.44
1:A:119:VAL:O	1:A:119:VAL:CG2	2.65	0.44
1:A:80:GLY:O	1:A:83:PRO:HD2	2.18	0.44
1:B:459:ALA:O	1:B:460:LYS:HB2	2.18	0.44
2:D:524:FAD:H9	2:D:524:FAD:H1'1	1.87	0.44
1:C:415:VAL:HG23	1:C:457:ILE:HB	2.00	0.44
1:D:45:ASP:HA	1:D:176:LYS:HE3	2.00	0.44
1:A:119:VAL:HG23	1:A:119:VAL:O	2.18	0.44
1:C:80:GLY:O	1:C:83:PRO:HD2	2.18	0.43
1:A:228:GLU:HG2	1:A:392:HIS:HB2	2.00	0.43
1:B:84:HIS:CE1	1:B:133:ARG:CZ	3.00	0.43
1:A:148:LEU:HB3	1:A:150:LEU:HG	2.00	0.43
1:A:13:ILE:CG2	1:A:139:ILE:HG12	2.48	0.43

Continued on next page...

Continued from previous page...

Atom-1	Atom-2	Distance(Å)	Clash(Å)
1:C:469:HIS:C	1:C:469:HIS:HD1	2.22	0.43
1:C:218:VAL:HG22	1:C:303:ILE:HD13	2.00	0.43
1:A:264:ARG:HA	1:A:264:ARG:NE	2.33	0.43
2:A:524:FAD:H1'1	2:A:524:FAD:H9	1.88	0.43
1:A:73:ASP:HA	2:A:524:FAD:N3A	2.34	0.43
1:A:503:ASN:O	1:A:506:HIS:CE1	2.72	0.43
1:B:352:GLY:C	1:B:354:LEU:H	2.21	0.43
1:A:372:ALA:O	1:A:376:MET:HG2	2.19	0.43
1:D:170:GLY:C	1:D:171:LYS:HD2	2.39	0.43
1:C:194:VAL:HG13	1:C:195:ASN:HD22	1.83	0.43
1:B:286:ASN:N	1:B:286:ASN:HD22	2.17	0.43
1:A:232:PHE:O	1:A:236:THR:HG23	2.18	0.43
1:B:60:ALA:HA	1:B:150:LEU:HD21	1.99	0.43
1:D:100:LEU:HB2	1:D:235:ALA:HB1	2.00	0.43
1:C:318:SER:O	1:C:319:ALA:C	2.56	0.43
1:D:162:ASP:OD2	1:D:162:ASP:C	2.57	0.43
1:B:362:PHE:C	1:B:362:PHE:CD1	2.92	0.43
1:C:362:PHE:C	1:C:362:PHE:CD1	2.91	0.43
1:C:400:LEU:HD11	1:C:485:ILE:CD1	2.48	0.43
1:B:85:ASN:HA	1:B:89:PRO:HG3	2.00	0.43
1:A:10:HIS:HA	1:A:146:GLU:OE1	2.18	0.43
1:D:184:ALA:HB1	1:D:315:GLN:C	2.38	0.43
1:B:158:ALA:H	2:B:524:FAD:C2A	2.31	0.43
1:A:20:ILE:O	1:A:24:LEU:HB2	2.17	0.43
1:A:152:TYR:CD1	1:A:154:LEU:HG	2.54	0.43
1:A:110:TYR:OH	1:B:128:LEU:HD22	2.18	0.43
1:C:322:ALA:O	1:C:326:GLY:HA2	2.19	0.43
1:B:429:VAL:C	1:B:431:LEU:H	2.21	0.43
1:D:179:ILE:HD12	1:D:371:ALA:HB1	2.00	0.43
1:A:231:CYS:O	1:A:394:HIS:NE2	2.51	0.43
1:D:461:THR:O	1:D:463:LYS:N	2.51	0.43
1:A:16:TRP:HD1	1:A:142:PHE:HB2	1.84	0.43
1:A:436:ARG:NH1	1:B:99:GLU:OE1	2.52	0.43
1:D:200:PHE:HA	1:D:204:THR:HG21	2.01	0.43
1:D:424:GLU:HG3	1:D:425:ASN:ND2	2.33	0.43
1:D:458:ASP:O	1:D:462:ARG:HA	2.19	0.43
1:B:322:ALA:O	1:B:326:GLY:HA2	2.18	0.43
1:C:188:THR:OG1	1:C:189:LEU:N	2.52	0.43
1:B:89:PRO:HB3	1:B:129:PHE:CE1	2.54	0.43
1:B:170:GLY:C	1:B:171:LYS:HD2	2.39	0.43
1:B:201:ASP:OD1	1:B:201:ASP:C	2.57	0.43
1:C:476:ASP:OD2	1:D:505:THR:OG1	2.27	0.43

Continued on next page...

Continued from previous page...

Atom-1	Atom-2	Distance(Å)	Clash(Å)
1:B:352:GLY:C	1:B:354:LEU:N	2.68	0.43
1:C:49:ILE:HG22	1:C:182:VAL:CG2	2.48	0.43
1:A:139:ILE:O	1:A:143:GLN:HB3	2.18	0.43
1:C:289:VAL:HG12	1:C:290:GLN:N	2.33	0.43
1:A:227:VAL:HG21	1:A:249:LEU:CD2	2.38	0.43
1:A:325:LEU:O	1:A:345:VAL:HG21	2.19	0.43
1:B:400:LEU:HD22	1:B:482:ASN:HB2	2.00	0.43
1:D:185:GLY:HA2	1:D:317:ARG:NH2	2.34	0.43
1:C:424:GLU:OE2	1:D:12:THR:HG23	2.19	0.43
1:C:159:LYS:HB2	1:C:167:GLU:HB3	2.00	0.43
1:C:273:ILE:HG22	1:C:276:SER:HB2	2.00	0.43
1:D:352:GLY:C	1:D:354:LEU:N	2.71	0.43
1:D:355:ILE:CG2	1:D:355:ILE:O	2.65	0.42
1:B:362:PHE:CD1	1:B:363:LYS:N	2.87	0.42
1:C:14:ASN:O	1:C:18:THR:HG23	2.19	0.42
2:C:524:FAD:H9	2:C:524:FAD:H1'1	1.86	0.42
1:D:279:THR:HG22	1:D:280:ARG:HG2	1.99	0.42
1:B:322:ALA:HB2	1:B:329:LEU:HD21	2.00	0.42
1:C:276:SER:HA	1:C:295:MET:O	2.18	0.42
1:A:298:ASN:CG	1:A:298:ASN:O	2.56	0.42
1:A:366:LYS:NZ	1:B:496:ASP:O	2.45	0.42
1:C:191:VAL:CG2	1:C:279:THR:O	2.67	0.42
1:C:191:VAL:CG2	1:C:280:ARG:HA	2.49	0.42
1:C:388:PRO:HG2	1:D:500:LEU:HD21	2.01	0.42
1:A:424:GLU:OE2	1:B:12:THR:HG23	2.19	0.42
1:D:278:VAL:HA	1:D:294:ALA:HB2	2.01	0.42
1:D:371:ALA:O	1:D:375:VAL:HG13	2.19	0.42
1:B:100:LEU:HB2	1:B:235:ALA:HB1	2.01	0.42
1:C:436:ARG:NH1	1:D:99:GLU:OE1	2.52	0.42
1:C:16:TRP:HB3	1:C:138:GLY:HA2	2.02	0.42
2:C:524:FAD:HO3'	2:C:524:FAD:H5'2	1.80	0.42
1:C:53:ALA:O	1:C:57:PHE:HB2	2.19	0.42
1:C:90:HIS:CE1	1:C:392:HIS:HD2	2.37	0.42
1:B:231:CYS:SG	1:B:265:MET:HE3	2.60	0.42
1:C:499:GLU:OE2	1:C:512:ARG:NH2	2.52	0.42
1:D:476:ASP:O	1:D:479:GLN:HG3	2.18	0.42
1:A:24:LEU:HD13	1:A:76:PRO:CG	2.50	0.42
1:B:289:VAL:HG12	1:B:290:GLN:N	2.33	0.42
1:D:230:GLY:O	1:D:270:MET:HE3	2.20	0.42
1:A:201:ASP:N	1:A:204:THR:HG22	2.12	0.42
1:C:40:ASP:CB	1:C:68:ARG:NH1	2.83	0.42
1:C:338:ASN:OD1	1:C:342:GLN:HB2	2.20	0.42

Continued on next page...

Continued from previous page...

Atom-1	Atom-2	Distance(Å)	Clash(Å)
1:C:191:VAL:HG23	1:C:192:PRO:HD2	2.01	0.42
1:D:501:PHE:CG	1:D:502:LEU:HA	2.54	0.42
1:A:78:LEU:CD2	1:A:154:LEU:HD21	2.50	0.42
1:D:47:ILE:HG13	1:D:175:ALA:HB2	2.02	0.42
1:D:10:HIS:HA	1:D:146:GLU:OE1	2.20	0.42
1:D:67:GLY:HA3	1:D:376:MET:CE	2.50	0.42
1:C:412:HIS:HD2	1:C:458:ASP:OD2	2.02	0.42
1:C:476:ASP:HB2	1:D:504:PRO:HD2	2.02	0.42
1:D:125:VAL:HG13	1:D:126:VAL:N	2.34	0.42
1:A:34:TYR:OH	1:A:36:VAL:HG21	2.19	0.42
1:C:346:PRO:O	1:C:348:VAL:HG23	2.20	0.42
1:A:459:ALA:O	1:A:460:LYS:HB2	2.19	0.42
1:B:200:PHE:CD1	1:B:204:THR:HG23	2.55	0.42
1:A:338:ASN:ND2	1:A:340:TYR:HD2	2.18	0.42
1:B:202:HIS:CE1	2:B:524:FAD:HM82	2.55	0.42
1:D:383:THR:HA	1:D:384:PRO:HD2	1.90	0.42
1:B:405:GLU:CD	1:B:405:GLU:H	2.22	0.42
1:C:286:ASN:ND2	1:C:286:ASN:N	2.67	0.42
1:B:521:VAL:O	1:B:522:SER:HB2	2.20	0.42
1:A:459:ALA:O	1:A:460:LYS:O	2.38	0.42
1:C:454:LYS:CG	1:C:455:ILE:N	2.82	0.42
1:A:122:ILE:HD11	1:A:238:ARG:HD2	2.02	0.42
1:B:280:ARG:HH11	1:B:280:ARG:HG2	1.85	0.42
1:C:499:GLU:O	1:C:499:GLU:HG2	2.19	0.42
1:C:78:LEU:H	1:C:141:ASN:HD21	1.68	0.42
1:C:139:ILE:O	1:C:143:GLN:HB3	2.20	0.42
1:A:383:THR:HA	1:A:384:PRO:HD2	1.89	0.42
1:B:45:ASP:O	1:B:46:ALA:HB2	2.19	0.42
1:C:60:ALA:HA	1:C:150:LEU:HD21	2.02	0.41
1:A:23:ILE:HG23	1:A:30:GLY:HA3	2.01	0.41
1:A:99:GLU:OE1	1:B:436:ARG:NH1	2.52	0.41
1:B:162:ASP:C	1:B:162:ASP:OD2	2.59	0.41
1:C:76:PRO:HB3	1:C:155:ASN:HB2	2.02	0.41
1:C:100:LEU:O	1:C:104:ARG:HG3	2.20	0.41
1:A:24:LEU:HD13	1:A:76:PRO:HG3	2.02	0.41
1:D:152:TYR:CD1	1:D:154:LEU:HG	2.55	0.41
1:D:78:LEU:H	1:D:141:ASN:HD21	1.68	0.41
1:B:415:VAL:HG23	1:B:457:ILE:HB	2.03	0.41
1:D:429:VAL:C	1:D:431:LEU:H	2.23	0.41
1:C:302:ARG:HH11	1:C:302:ARG:HG2	1.86	0.41
1:A:171:LYS:HD2	1:A:171:LYS:N	2.34	0.41
1:A:442:PHE:O	1:B:128:LEU:HD11	2.21	0.41

Continued on next page...

Continued from previous page...

Atom-1	Atom-2	Distance(Å)	Clash(Å)
1:C:115:MET:O	1:C:118:LYS:HB3	2.19	0.41
1:B:61:TYR:O	1:B:65:MET:HG3	2.19	0.41
1:D:33:ILE:O	1:D:153:ILE:HA	2.20	0.41
1:D:198:GLY:H	1:D:289:VAL:HG23	1.86	0.41
1:D:86:ALA:O	1:D:90:HIS:HB3	2.19	0.41
1:A:400:LEU:HD11	1:A:485:ILE:HD13	2.01	0.41
1:D:400:LEU:HD23	1:D:478:PHE:CD2	2.55	0.41
1:A:447:ALA:C	1:A:449:MET:H	2.23	0.41
1:C:371:ALA:O	1:C:375:VAL:HG13	2.20	0.41
1:C:288:ARG:CG	1:C:289:VAL:N	2.83	0.41
1:D:521:VAL:O	1:D:522:SER:HB2	2.20	0.41
1:A:447:ALA:C	1:A:449:MET:N	2.73	0.41
1:A:179:ILE:HD12	1:A:371:ALA:HB1	2.02	0.41
1:D:71:ILE:HB	1:D:152:TYR:CB	2.50	0.41
1:D:80:GLY:O	1:D:83:PRO:HD2	2.21	0.41
1:A:495:GLY:HA2	1:A:508:ILE:O	2.20	0.41
1:B:267:GLU:OE1	1:B:448:HIS:CE1	2.74	0.41
1:A:20:ILE:HD13	1:A:137:HIS:HB3	2.02	0.41
1:D:48:PHE:CE2	1:D:179:ILE:HG21	2.56	0.41
1:C:500:LEU:HD21	1:D:388:PRO:HG2	2.01	0.41
1:D:398:SER:OG	1:D:475:LYS:HA	2.20	0.41
1:C:152:TYR:CD1	1:C:154:LEU:HG	2.55	0.41
1:D:196:ALA:O	1:D:199:VAL:HG23	2.20	0.41
1:D:82:CYS:SG	1:D:361:MET:SD	3.19	0.41
1:B:45:ASP:HA	1:B:176:LYS:HE3	2.02	0.41
1:B:6:ALA:O	1:B:7:ARG:C	2.59	0.41
1:A:503:ASN:HB2	1:B:476:ASP:OD1	2.20	0.41
1:C:122:ILE:O	1:C:125:VAL:CG1	2.63	0.41
1:B:182:VAL:CG1	1:B:317:ARG:HB2	2.49	0.41
1:B:122:ILE:O	1:B:126:VAL:CG1	2.69	0.41
1:C:88:VAL:HB	1:C:89:PRO:CD	2.51	0.41
1:B:329:LEU:HD23	1:B:335:VAL:HA	2.03	0.41
1:B:44:TYR:CD1	1:B:68:ARG:HG2	2.56	0.41
1:C:171:LYS:N	1:C:171:LYS:HD2	2.36	0.41
1:B:465:LEU:N	1:B:465:LEU:CD1	2.84	0.41
1:C:227:VAL:HG21	1:C:249:LEU:CD2	2.38	0.41
1:B:162:ASP:OD2	1:B:165:THR:N	2.53	0.41
1:B:338:ASN:ND2	1:B:342:GLN:HE21	2.15	0.41
1:C:362:PHE:HB2	1:D:499:GLU:OE1	2.20	0.41
1:D:125:VAL:HG11	1:D:232:PHE:CZ	2.56	0.41
1:D:122:ILE:O	1:D:125:VAL:CG1	2.67	0.41
1:B:122:ILE:O	1:B:126:VAL:HG13	2.21	0.41

Continued on next page...

Continued from previous page...

Atom-1	Atom-2	Distance(Å)	Clash(Å)
1:B:191:VAL:HG22	1:B:192:PRO:CD	2.50	0.41
1:C:499:GLU:HB2	1:C:503:ASN:HD22	1.85	0.41
1:C:375:VAL:C	1:C:377:GLY:H	2.24	0.41
1:B:85:ASN:HB2	1:B:203:ALA:HA	2.03	0.41
1:A:89:PRO:HB3	1:A:129:PHE:CE1	2.55	0.41
1:B:523:LEU:N	1:B:523:LEU:HD12	2.36	0.41
1:A:44:TYR:HB2	1:A:175:ALA:HB2	2.02	0.41
1:C:193:GLY:O	1:C:195:ASN:N	2.54	0.41
1:C:148:LEU:CB	1:C:150:LEU:HG	2.51	0.41
1:A:500:LEU:HD21	1:B:388:PRO:HG2	2.02	0.41
1:B:107:SER:OG	1:B:114:ASP:HA	2.20	0.41
1:C:61:TYR:CD2	1:C:369:CYS:SG	3.12	0.41
1:D:72:VAL:CG1	1:D:158:ALA:HB2	2.51	0.41
1:A:189:LEU:HD21	1:A:278:VAL:HB	2.03	0.41
1:D:446:THR:O	1:D:449:MET:HB2	2.21	0.41
1:D:5:ASN:HD21	1:D:7:ARG:HB2	1.84	0.41
1:B:89:PRO:HB3	1:B:129:PHE:CZ	2.56	0.41
1:D:506:HIS:HB3	1:D:509:GLN:NE2	2.36	0.41
1:B:77:PHE:CD1	1:B:77:PHE:C	2.95	0.41
1:B:80:GLY:O	1:B:83:PRO:HD2	2.21	0.40
1:B:491:VAL:HG11	1:B:520:LEU:HD21	2.03	0.40
1:C:457:ILE:HG22	1:C:458:ASP:N	2.37	0.40
1:A:454:LYS:CG	1:A:455:ILE:N	2.82	0.40
1:D:462:ARG:O	1:D:490:THR:HA	2.21	0.40
1:B:213:PRO:HB2	1:B:238:ARG:HE	1.86	0.40
1:D:193:GLY:O	1:D:195:ASN:N	2.54	0.40
1:C:224:LYS:HE2	1:C:390:PHE:O	2.20	0.40
1:C:201:ASP:N	1:C:204:THR:HG22	2.11	0.40
1:B:201:ASP:H	1:B:204:THR:CG2	2.18	0.40
1:B:87:CYS:HA	1:B:90:HIS:HD2	1.85	0.40
1:C:359:MET:O	2:C:524:FAD:H1'2	2.20	0.40
1:B:16:TRP:O	1:B:20:ILE:HG13	2.21	0.40
1:A:148:LEU:HB2	1:A:150:LEU:HG	2.03	0.40
1:A:182:VAL:HG12	1:A:317:ARG:HB2	2.04	0.40
1:C:71:ILE:HB	1:C:152:TYR:HB3	2.01	0.40
1:A:278:VAL:HA	1:A:294:ALA:HB2	2.03	0.40
1:A:202:HIS:CG	1:A:203:ALA:N	2.89	0.40
1:A:370:TYR:HA	1:A:373:ARG:HD3	2.03	0.40
1:D:24:LEU:HD21	1:D:84:HIS:CE1	2.57	0.40
1:A:501:PHE:CD2	1:A:502:LEU:HD23	2.56	0.40
1:D:389:ASP:HB3	1:D:399:PHE:CE1	2.57	0.40
1:B:201:ASP:N	1:B:204:THR:HG22	2.17	0.40

Continued on next page...

Continued from previous page...

Atom-1	Atom-2	Distance(Å)	Clash(Å)
1:B:357:GLY:HA2	1:B:358:PRO:C	2.42	0.40
1:A:339:GLU:HB2	1:A:381:SER:HB2	2.03	0.40
1:D:503:ASN:O	1:D:504:PRO:C	2.59	0.40
1:B:12:THR:H	1:B:15:GLN:HB2	1.87	0.40
1:D:273:ILE:HG22	1:D:276:SER:HB2	2.04	0.40
1:C:370:TYR:HD1	1:C:382:TYR:CG	2.40	0.40
1:A:245:ARG:HG3	1:A:277:ASN:OD1	2.22	0.40
1:B:166:VAL:CG2	1:B:178:LEU:HD21	2.50	0.40
1:D:6:ALA:O	1:D:7:ARG:C	2.60	0.40

There are no symmetry-related clashes.

5.3 Torsion angles

5.3.1 Protein backbone ⓘ

In the following table, the Percentiles column shows the percent Ramachandran outliers of the chain as a percentile score with respect to all X-ray entries followed by that with respect to entries of similar resolution. The Analysed column shows the number of residues for which the backbone conformation was analysed, and the total number of residues.

Mol	Chain	Analysed	Favoured	Allowed	Outliers	Percentiles	
1	A	520/523 (99%)	449 (86%)	60 (12%)	11 (2%)	11	33
1	B	520/523 (99%)	447 (86%)	62 (12%)	11 (2%)	11	33
1	C	520/523 (99%)	456 (88%)	51 (10%)	13 (2%)	9	28
1	D	520/523 (99%)	450 (86%)	54 (10%)	16 (3%)	7	21
All	All	2080/2092 (99%)	1802 (87%)	227 (11%)	51 (2%)	9	28

All (51) Ramachandran outliers are listed below:

Mol	Chain	Res	Type
1	A	224	LYS
1	A	319	ALA
1	A	462	ARG
1	B	224	LYS
1	B	462	ARG
1	C	224	LYS
1	C	462	ARG
1	C	508	ILE
1	D	224	LYS

Continued on next page...

Continued from previous page...

Mol	Chain	Res	Type
1	D	462	ARG
1	A	461	THR
1	A	522	SER
1	B	461	THR
1	B	522	SER
1	C	352	GLY
1	C	522	SER
1	D	319	ALA
1	D	352	GLY
1	D	461	THR
1	D	522	SER
1	A	393	THR
1	A	460	LYS
1	B	213	PRO
1	B	319	ALA
1	B	434	SER
1	C	319	ALA
1	C	460	LYS
1	C	461	THR
1	A	352	GLY
1	C	393	THR
1	D	393	THR
1	A	87	CYS
1	B	428	ASN
1	C	41	PRO
1	D	197	LYS
1	B	508	ILE
1	D	85	ASN
1	D	428	ASN
1	D	460	LYS
1	D	508	ILE
1	A	194	VAL
1	B	88	VAL
1	C	194	VAL
1	C	384	PRO
1	D	194	VAL
1	C	351	VAL
1	D	213	PRO
1	A	41	PRO
1	B	351	VAL
1	D	41	PRO
1	D	88	VAL

5.3.2 Protein sidechains ⓘ

In the following table, the Percentiles column shows the percent sidechain outliers of the chain as a percentile score with respect to all X-ray entries followed by that with respect to entries of similar resolution. The Analysed column shows the number of residues for which the sidechain conformation was analysed, and the total number of residues.

Mol	Chain	Analysed	Rotameric	Outliers	Percentiles	
1	A	423/424 (100%)	407 (96%)	16 (4%)	44	80
1	B	423/424 (100%)	405 (96%)	18 (4%)	40	76
1	C	423/424 (100%)	407 (96%)	16 (4%)	44	80
1	D	423/424 (100%)	402 (95%)	21 (5%)	34	70
All	All	1692/1696 (100%)	1621 (96%)	71 (4%)	40	77

All (71) residues with a non-rotameric sidechain are listed below:

Mol	Chain	Res	Type
1	A	5	ASN
1	A	7	ARG
1	A	25	GLU
1	A	90	HIS
1	A	174	LYS
1	A	182	VAL
1	A	190	ASP
1	A	305	THR
1	A	375	VAL
1	A	405	GLU
1	A	422	ASP
1	A	455	ILE
1	A	461	THR
1	A	465	LEU
1	A	504	PRO
1	A	514	ARG
1	B	5	ASN
1	B	7	ARG
1	B	25	GLU
1	B	73	ASP
1	B	90	HIS
1	B	126	VAL
1	B	174	LYS
1	B	204	THR
1	B	305	THR
1	B	375	VAL

Continued on next page...

Continued from previous page...

Mol	Chain	Res	Type
1	B	405	GLU
1	B	422	ASP
1	B	455	ILE
1	B	461	THR
1	B	462	ARG
1	B	465	LEU
1	B	504	PRO
1	B	514	ARG
1	C	5	ASN
1	C	7	ARG
1	C	25	GLU
1	C	87	CYS
1	C	90	HIS
1	C	126	VAL
1	C	174	LYS
1	C	190	ASP
1	C	305	THR
1	C	375	VAL
1	C	405	GLU
1	C	455	ILE
1	C	462	ARG
1	C	465	LEU
1	C	502	LEU
1	C	514	ARG
1	D	5	ASN
1	D	7	ARG
1	D	25	GLU
1	D	73	ASP
1	D	90	HIS
1	D	126	VAL
1	D	174	LYS
1	D	182	VAL
1	D	190	ASP
1	D	234	ASN
1	D	305	THR
1	D	375	VAL
1	D	389	ASP
1	D	405	GLU
1	D	422	ASP
1	D	455	ILE
1	D	461	THR
1	D	465	LEU

Continued on next page...

Continued from previous page...

Mol	Chain	Res	Type
1	D	502	LEU
1	D	504	PRO
1	D	514	ARG

Some sidechains can be flipped to improve hydrogen bonding and reduce clashes. All (63) such sidechains are listed below:

Mol	Chain	Res	Type
1	A	5	ASN
1	A	14	ASN
1	A	39	ASN
1	A	69	GLN
1	A	90	HIS
1	A	141	ASN
1	A	163	ASN
1	A	195	ASN
1	A	234	ASN
1	A	255	ASN
1	A	286	ASN
1	A	342	GLN
1	A	392	HIS
1	A	412	HIS
1	A	425	ASN
1	A	448	HIS
1	A	482	ASN
1	B	5	ASN
1	B	14	ASN
1	B	39	ASN
1	B	69	GLN
1	B	90	HIS
1	B	141	ASN
1	B	234	ASN
1	B	255	ASN
1	B	286	ASN
1	B	342	GLN
1	B	392	HIS
1	B	412	HIS
1	B	425	ASN
1	B	448	HIS
1	C	5	ASN
1	C	14	ASN
1	C	39	ASN
1	C	69	GLN

Continued on next page...

Continued from previous page...

Mol	Chain	Res	Type
1	C	90	HIS
1	C	141	ASN
1	C	163	ASN
1	C	195	ASN
1	C	234	ASN
1	C	255	ASN
1	C	286	ASN
1	C	342	GLN
1	C	392	HIS
1	C	412	HIS
1	C	425	ASN
1	D	5	ASN
1	D	14	ASN
1	D	39	ASN
1	D	69	GLN
1	D	90	HIS
1	D	141	ASN
1	D	163	ASN
1	D	195	ASN
1	D	234	ASN
1	D	255	ASN
1	D	286	ASN
1	D	342	GLN
1	D	392	HIS
1	D	412	HIS
1	D	425	ASN
1	D	448	HIS
1	D	482	ASN

5.3.3 RNA ⓘ

There are no RNA chains in this entry.

5.4 Non-standard residues in protein, DNA, RNA chains ⓘ

There are no non-standard protein/DNA/RNA residues in this entry.

5.5 Carbohydrates ⓘ

There are no carbohydrates in this entry.

5.6 Ligand geometry

4 ligands are modelled in this entry.

In the following table, the Counts columns list the number of bonds (or angles) for which Mogul statistics could be retrieved, the number of bonds (or angles) that are observed in the model and the number of bonds (or angles) that are defined in the chemical component dictionary. The Link column lists molecule types, if any, to which the group is linked. The Z score for a bond length (or angle) is the number of standard deviations the observed value is removed from the expected value. A bond length (or angle) with $|Z| > 2$ is considered an outlier worth inspection. RMSZ is the root-mean-square of all Z scores of the bond lengths (or angles).

Mol	Type	Chain	Res	Link	Bond lengths			Bond angles		
					Counts	RMSZ	# $ Z > 2$	Counts	RMSZ	# $ Z > 2$
2	FAD	A	524	-	58,58,58	2.40	17 (29%)	85,89,89	1.69	16 (18%)
2	FAD	B	524	-	58,58,58	2.36	18 (31%)	85,89,89	1.72	15 (17%)
2	FAD	C	524	-	58,58,58	2.32	16 (27%)	85,89,89	1.74	16 (18%)
2	FAD	D	524	-	58,58,58	2.27	16 (27%)	85,89,89	1.71	14 (16%)

In the following table, the Chirals column lists the number of chiral outliers, the number of chiral centers analysed, the number of these observed in the model and the number defined in the chemical component dictionary. Similar counts are reported in the Torsion and Rings columns. '-' means no outliers of that kind were identified.

Mol	Type	Chain	Res	Link	Chirals	Torsions	Rings
2	FAD	A	524	-	-	0/34/50/50	0/1/6/6
2	FAD	B	524	-	-	0/34/50/50	0/1/6/6
2	FAD	C	524	-	-	0/34/50/50	0/1/6/6
2	FAD	D	524	-	-	0/34/50/50	0/1/6/6

All (67) bond length outliers are listed below:

Mol	Chain	Res	Type	Atoms	Z	Observed(Å)	Ideal(Å)
2	A	524	FAD	C9A-N10	8.41	1.51	1.38
2	B	524	FAD	C9A-N10	8.13	1.50	1.38
2	D	524	FAD	C9A-N10	7.70	1.50	1.38
2	C	524	FAD	C9A-N10	7.52	1.50	1.38
2	D	524	FAD	C4A-N3A	6.60	1.45	1.35
2	C	524	FAD	C4A-N3A	6.20	1.45	1.35
2	A	524	FAD	C4A-N3A	5.92	1.44	1.35
2	B	524	FAD	C4A-N3A	5.52	1.44	1.35
2	C	524	FAD	C2A-N3A	5.39	1.42	1.32
2	A	524	FAD	C2A-N3A	5.39	1.42	1.32
2	D	524	FAD	C2A-N3A	5.18	1.42	1.32

Continued on next page...

Continued from previous page...

Mol	Chain	Res	Type	Atoms	Z	Observed(Å)	Ideal(Å)
2	B	524	FAD	C2A-N3A	4.90	1.41	1.32
2	C	524	FAD	C5X-N5	4.89	1.42	1.35
2	B	524	FAD	C5X-N5	4.88	1.42	1.35
2	A	524	FAD	C1'-N10	-4.73	1.42	1.48
2	B	524	FAD	C4X-N5	4.44	1.45	1.36
2	B	524	FAD	C1'-N10	-4.37	1.43	1.48
2	A	524	FAD	C5X-N5	4.33	1.42	1.35
2	D	524	FAD	C5X-N5	4.06	1.41	1.35
2	D	524	FAD	C4X-N5	4.04	1.44	1.36
2	A	524	FAD	C8A-N9A	4.01	1.42	1.36
2	B	524	FAD	C5A-C4A	-3.93	1.31	1.40
2	C	524	FAD	C8A-N9A	3.89	1.42	1.36
2	B	524	FAD	C8A-N9A	3.87	1.42	1.36
2	D	524	FAD	C5A-C4A	-3.82	1.31	1.40
2	A	524	FAD	C5A-C4A	-3.82	1.31	1.40
2	A	524	FAD	C4X-N5	3.78	1.44	1.36
2	C	524	FAD	C4-N3	3.76	1.43	1.37
2	C	524	FAD	C4X-N5	3.70	1.43	1.36
2	C	524	FAD	C1'-N10	-3.69	1.44	1.48
2	D	524	FAD	C8A-N9A	3.69	1.42	1.36
2	C	524	FAD	C5A-C4A	-3.64	1.32	1.40
2	D	524	FAD	C5'-C4'	-3.54	1.46	1.51
2	A	524	FAD	C4-N3	3.50	1.43	1.37
2	A	524	FAD	C5'-C4'	-3.39	1.46	1.51
2	D	524	FAD	C1'-N10	-3.37	1.44	1.48
2	B	524	FAD	C1'-C2'	-3.36	1.48	1.51
2	B	524	FAD	C9A-C5X	3.32	1.49	1.42
2	C	524	FAD	C4-C4X	-3.23	1.36	1.41
2	B	524	FAD	C4-N3	3.19	1.42	1.37
2	A	524	FAD	C1'-C2'	-3.09	1.48	1.51
2	C	524	FAD	C5'-C4'	-2.97	1.47	1.51
2	B	524	FAD	C5'-C4'	-2.96	1.47	1.51
2	D	524	FAD	C4-N3	2.92	1.42	1.37
2	C	524	FAD	C10-N1	2.65	1.40	1.35
2	C	524	FAD	C9A-C5X	2.64	1.48	1.42
2	A	524	FAD	C4A-N9A	2.59	1.41	1.37
2	D	524	FAD	C10-N1	2.53	1.40	1.35
2	A	524	FAD	C9A-C5X	2.47	1.47	1.42
2	B	524	FAD	C4-C4X	-2.45	1.37	1.41
2	D	524	FAD	C9A-C5X	2.43	1.47	1.42
2	B	524	FAD	C2'-C3'	-2.42	1.48	1.53
2	D	524	FAD	C4A-N9A	2.40	1.41	1.37

Continued on next page...

Continued from previous page...

Mol	Chain	Res	Type	Atoms	Z	Observed(Å)	Ideal(Å)
2	C	524	FAD	C2'-C3'	-2.36	1.48	1.53
2	A	524	FAD	O4-C4	2.32	1.29	1.24
2	A	524	FAD	C10-N1	2.28	1.39	1.35
2	B	524	FAD	C10-N1	2.27	1.39	1.35
2	A	524	FAD	C4-C4X	-2.27	1.37	1.41
2	A	524	FAD	C2B-C3B	-2.25	1.47	1.53
2	B	524	FAD	C2B-C3B	-2.23	1.47	1.53
2	D	524	FAD	C2B-C3B	-2.21	1.47	1.53
2	C	524	FAD	C1'-C2'	-2.20	1.49	1.51
2	B	524	FAD	C4X-C10	2.14	1.44	1.40
2	D	524	FAD	C6-C7	2.04	1.43	1.37
2	B	524	FAD	C6-C7	2.03	1.43	1.37
2	D	524	FAD	C2'-C3'	-2.02	1.49	1.53
2	C	524	FAD	C4A-N9A	2.01	1.40	1.37

All (61) bond angle outliers are listed below:

Mol	Chain	Res	Type	Atoms	Z	Observed(°)	Ideal(°)
2	C	524	FAD	C8A-N9A-C4A	-8.34	100.54	106.90
2	B	524	FAD	C8A-N9A-C4A	-8.20	100.64	106.90
2	D	524	FAD	C8A-N9A-C4A	-8.05	100.76	106.90
2	A	524	FAD	C8A-N9A-C4A	-7.89	100.88	106.90
2	B	524	FAD	N3A-C2A-N1A	-5.29	124.29	128.71
2	C	524	FAD	N3A-C2A-N1A	-4.97	124.56	128.71
2	D	524	FAD	N3A-C2A-N1A	-4.91	124.60	128.71
2	A	524	FAD	N3A-C2A-N1A	-4.70	124.78	128.71
2	A	524	FAD	C4X-C10-N10	-3.80	118.61	120.51
2	D	524	FAD	C4X-C10-N10	-3.79	118.62	120.51
2	C	524	FAD	C4X-C10-N10	-3.61	118.71	120.51
2	C	524	FAD	C1'-N10-C9A	-3.56	115.41	118.87
2	B	524	FAD	N3A-C4A-N9A	-3.55	119.02	125.43
2	C	524	FAD	N3A-C4A-N9A	-3.55	119.03	125.43
2	B	524	FAD	C1'-N10-C9A	-3.52	115.45	118.87
2	D	524	FAD	C1'-N10-C9A	-3.49	115.48	118.87
2	A	524	FAD	N3A-C4A-N9A	-3.42	119.26	125.43
2	D	524	FAD	N3A-C4A-N9A	-3.41	119.27	125.43
2	A	524	FAD	C1'-N10-C9A	-3.27	115.70	118.87
2	C	524	FAD	C5A-C4A-N9A	3.11	111.66	107.16
2	B	524	FAD	C5A-C4A-N9A	3.00	111.50	107.16
2	A	524	FAD	C5A-C4A-N9A	2.97	111.45	107.16
2	D	524	FAD	C2-N1-C10	2.96	117.96	114.98
2	B	524	FAD	C4X-C10-N10	-2.89	119.07	120.51

Continued on next page...

Continued from previous page...

Mol	Chain	Res	Type	Atoms	Z	Observed(°)	Ideal(°)
2	D	524	FAD	C5A-C4A-N9A	2.88	111.32	107.16
2	A	524	FAD	C10-C4X-N5	2.75	123.80	120.45
2	C	524	FAD	C10-C4X-N5	2.69	123.72	120.45
2	C	524	FAD	C2-N1-C10	2.68	117.68	114.98
2	B	524	FAD	O2'-C2'-C1'	-2.60	103.25	109.71
2	C	524	FAD	C8A-N9A-C1B	2.60	131.50	126.38
2	B	524	FAD	C10-C4X-N5	2.56	123.57	120.45
2	D	524	FAD	C8A-N9A-C1B	2.55	131.41	126.38
2	A	524	FAD	O2B-C2B-C3B	2.54	120.10	111.83
2	C	524	FAD	O2B-C2B-C3B	2.53	120.06	111.83
2	D	524	FAD	O2B-C2B-C3B	2.49	119.95	111.83
2	C	524	FAD	O2'-C2'-C1'	-2.49	103.53	109.71
2	D	524	FAD	C10-C4X-N5	2.47	123.46	120.45
2	A	524	FAD	O2'-C2'-C1'	-2.47	103.57	109.71
2	B	524	FAD	O2B-C2B-C3B	2.47	119.87	111.83
2	A	524	FAD	C2-N1-C10	2.47	117.46	114.98
2	B	524	FAD	C1'-C2'-C3'	2.40	116.67	109.82
2	A	524	FAD	C8A-N9A-C1B	2.37	131.05	126.38
2	B	524	FAD	C8A-N9A-C1B	2.35	131.02	126.38
2	B	524	FAD	C2-N1-C10	2.32	117.31	114.98
2	A	524	FAD	O3'-C3'-C4'	-2.29	102.94	108.74
2	B	524	FAD	C1'-N10-C10	2.29	122.41	119.17
2	A	524	FAD	C3B-C2B-C1B	2.25	104.43	100.91
2	C	524	FAD	C3B-C2B-C1B	2.24	104.41	100.91
2	D	524	FAD	O2'-C2'-C1'	-2.23	104.17	109.71
2	C	524	FAD	C1'-N10-C10	2.20	122.28	119.17
2	B	524	FAD	C4-C4X-C10	2.19	120.48	116.95
2	D	524	FAD	C1'-C2'-C3'	2.18	116.06	109.82
2	D	524	FAD	C1'-N10-C10	2.18	122.26	119.17
2	C	524	FAD	C1'-C2'-C3'	2.17	116.02	109.82
2	C	524	FAD	C4-C4X-C10	2.13	120.39	116.95
2	A	524	FAD	C1'-C2'-C3'	2.12	115.89	109.82
2	B	524	FAD	O3'-C3'-C4'	-2.11	103.41	108.74
2	D	524	FAD	O3'-C3'-C4'	-2.07	103.52	108.74
2	A	524	FAD	C1'-N10-C10	2.05	122.07	119.17
2	C	524	FAD	O3'-C3'-C4'	-2.04	103.58	108.74
2	A	524	FAD	C4-C4X-C10	2.01	120.19	116.95

There are no chirality outliers.

There are no torsion outliers.

There are no ring outliers.

5.7 Other polymers ⓘ

There are no such residues in this entry.

5.8 Polymer linkage issues

There are no chain breaks in this entry.

6 Fit of model and data ⓘ

6.1 Protein, DNA and RNA chains ⓘ

EDS was not executed - this section will therefore be empty.

6.2 Non-standard residues in protein, DNA, RNA chains ⓘ

EDS was not executed - this section will therefore be empty.

6.3 Carbohydrates ⓘ

EDS was not executed - this section will therefore be empty.

6.4 Ligands ⓘ

EDS was not executed - this section will therefore be empty.

6.5 Other polymers ⓘ

EDS was not executed - this section will therefore be empty.