



# Full wwPDB X-ray Structure Validation Report i

Oct 7, 2014 – 06:17 PM EDT

PDB ID : 4MQ4  
Title : Crystal Structure of hPNMT in Complex with bisubstrate inhibitor N-(3-(((2S,3S,4R,5R)-5-(6-amino-9H-purin-9-yl)-3,4-dihydroxytetrahydrofuran-2-yl)methyl)thio)propyl)-1,2,3,4-tetrahydroisoquinoline-3-carboxamide  
Authors : Bart, A.G.; Scott, E.E.  
Deposited on : 2013-09-15  
Resolution : 2.20 Å(reported)

This is a full wwPDB validation report for a publicly released PDB entry.  
We welcome your comments at [validation@mail.wwpdb.org](mailto:validation@mail.wwpdb.org)  
A user guide is available at <http://wwpdb.org/ValidationPDFNotes.html>

---

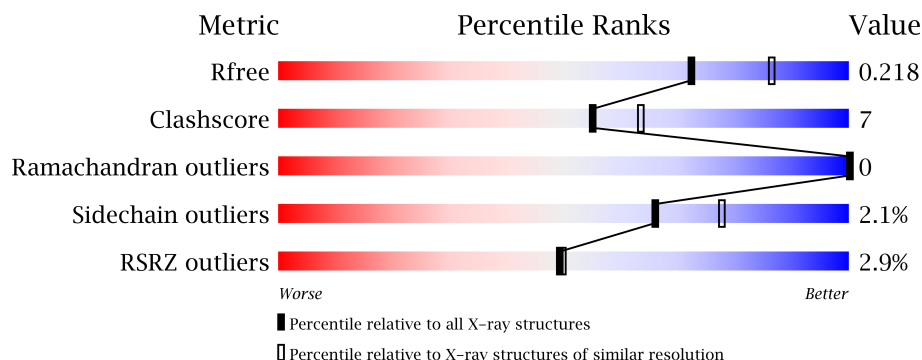
The following versions of software and data (see [references](#)) were used in the production of this report:

MolProbity : 4.02b-467  
Mogul : 1.16 November 2013  
Xtriage (Phenix) : dev-1439  
EDS : stable23828  
Percentile statistics : 21963  
Refmac : 5.8.0049  
CCP4 : 6.3.0 (Settle)  
Ideal geometry (proteins) : Engh & Huber (2001)  
Ideal geometry (DNA, RNA) : Parkinson et. al. (1996)  
Validation Pipeline (wwPDB-VP) : stable23828

# 1 Overall quality at a glance



The reported resolution of this entry is 2.20 Å.

Percentile scores (ranging between 0-100) for global validation metrics of the entry are shown in the following graphic. The table shows the number of entries on which the scores are based.



Metric	Whole archive (#Entries)	Similar resolution (#Entries, resolution range(Å))
$R_{free}$	66092	2938 (2.20-2.20)
Clashscore	79885	3751 (2.20-2.20)
Ramachandran outliers	78287	3681 (2.20-2.20)
Sidechain outliers	78261	3682 (2.20-2.20)
RSRZ outliers	66119	2939 (2.20-2.20)

The table below summarises the geometric issues observed across the polymeric chains and their fit to the electron density. The red, orange, yellow and green segments on the lower bar indicate the fraction of residues that contain outliers for  $\geq 3$ , 2, 1 and 0 types of geometric quality criteria. The upper red bar (where present) indicates the fraction of residues that have poor fit to the electron density.

Mol	Chain	Length	Quality of chain
1	A	289	
1	B	289	

## 2 Entry composition

There are 4 unique types of molecules in this entry. The entry contains 8591 atoms, of which 4165 are hydrogens and 0 are deuterium.

In the tables below, the ZeroOcc column contains the number of atoms modelled with zero occupancy, the AltConf column contains the number of residues with at least one atom in alternate conformation and the Trace column contains the number of residues modelled with at most 2 atoms.

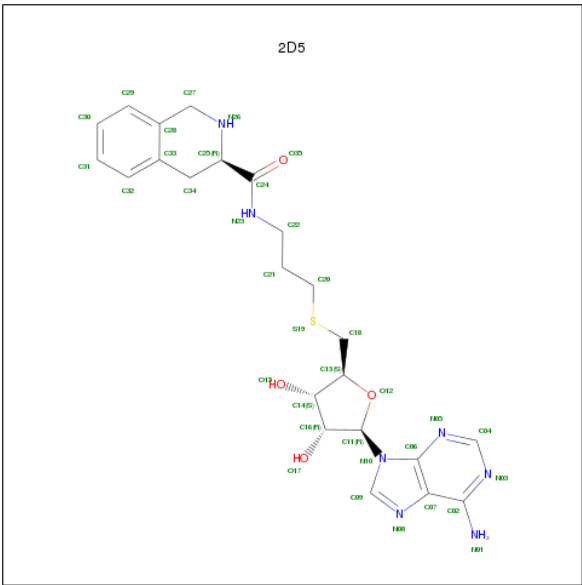
- Molecule 1 is a protein called Phenylethanolamine N-methyltransferase.

Mol	Chain	Residues	Atoms						ZeroOcc	AltConf	Trace
1	A	264	Total	C	H	N	O	S	0	1	0
			4086	1311	2021	368	377	9			
1	B	255	Total	C	H	N	O	S	0	2	0
			4028	1285	2004	361	368	10			

There are 14 discrepancies between the modelled and reference sequences:

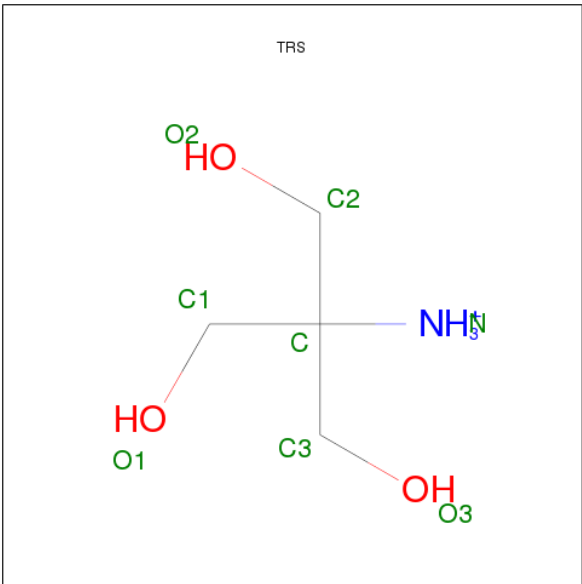
Chain	Residue	Modelled	Actual	Comment	Reference
A	283	GLU	-	EXPRESSION TAG	UNP P11086
A	284	HIS	-	EXPRESSION TAG	UNP P11086
A	285	HIS	-	EXPRESSION TAG	UNP P11086
A	286	HIS	-	EXPRESSION TAG	UNP P11086
A	287	HIS	-	EXPRESSION TAG	UNP P11086
A	288	HIS	-	EXPRESSION TAG	UNP P11086
A	289	HIS	-	EXPRESSION TAG	UNP P11086
B	283	GLU	-	EXPRESSION TAG	UNP P11086
B	284	HIS	-	EXPRESSION TAG	UNP P11086
B	285	HIS	-	EXPRESSION TAG	UNP P11086
B	286	HIS	-	EXPRESSION TAG	UNP P11086
B	287	HIS	-	EXPRESSION TAG	UNP P11086
B	288	HIS	-	EXPRESSION TAG	UNP P11086
B	289	HIS	-	EXPRESSION TAG	UNP P11086

- Molecule 2 is 5'-S-(3-([(3R)-1,2,3,4-TETRAHYDROISOQUINOLIN-3-YLCARBONYL]AMINO}PROPYL)-5'-THIOADENOSINE (three-letter code: 2D5) (formula: C<sub>23</sub>H<sub>29</sub>N<sub>7</sub>O<sub>4</sub>S).



Mol	Chain	Residues	Atoms						ZeroOcc	AltConf
2	A	1	Total	C	H	N	O	S	0	1
			128	46	58	14	8	2		
2	B	1	Total	C	H	N	O	S	0	1
			128	46	58	14	8	2		

- Molecule 3 is 2-AMINO-2-HYDROXYMETHYL-PROPANE-1,3-DIOL (three-letter code: TRS) (formula: C<sub>4</sub>H<sub>12</sub>NO<sub>3</sub>).



Mol	Chain	Residues	Atoms					ZeroOcc	AltConf
3	A	1	Total	C	H	N	O	0	0
			20	4	12	1	3		

Continued on next page...

*Continued from previous page...*

Mol	Chain	Residues	Atoms					ZeroOcc	AltConf
3	B	1	Total	C	H	N	O	0	0
			20	4	12	1	3		

- Molecule 4 is water.

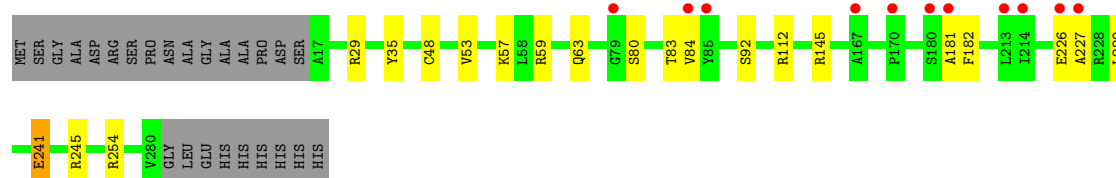
Mol	Chain	Residues	Atoms		ZeroOcc	AltConf
4	A	101	Total	O	0	0
			101	101		
4	B	80	Total	O	0	0
			80	80		

### 3 Residue-property plots

These plots are drawn for all protein, RNA and DNA chains in the entry. The first graphic for a chain summarises the proportions of errors displayed in the second graphic. The second graphic shows the sequence view annotated by issues in geometry and electron density. Residues are color-coded according to the number of geometric quality criteria for which they contain at least one outlier: green = 0, yellow = 1, orange = 2 and red = 3 or more. A red dot above a residue indicates a poor fit to the electron density ( $RSRZ > 2$ ). Stretches of 2 or more consecutive residues without any outlier are shown as a green connector. Residues present in the sample, but not in the model, are shown in grey.

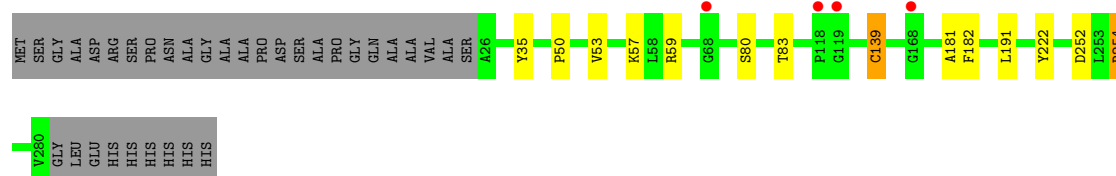
- Molecule 1: Phenylethanolamine N-methyltransferase

Chain A: 



- Molecule 1: Phenylethanolamine N-methyltransferase

Chain B: 



## 4 Data and refinement statistics

Property	Value	Source
Space group	P 43 21 2	Depositor
Cell constants a, b, c, $\alpha$ , $\beta$ , $\gamma$	94.15Å 94.15Å 188.16Å 90.00° 90.00° 90.00°	Depositor
Resolution (Å)	38.43 – 2.20 38.43 – 2.20	Depositor EDS
% Data completeness (in resolution range)	99.4 (38.43-2.20) 99.5 (38.43-2.20)	Depositor EDS
$R_{merge}$	(Not available)	Depositor
$R_{sym}$	(Not available)	Depositor
$\langle I/\sigma(I) \rangle$ <sup>1</sup>	1.96 (at 2.20Å)	Xtriage
Refinement program	PHENIX (phenix.refine: 1.8.2_1309)	Depositor
R, $R_{free}$	0.181 , 0.221 0.178 , 0.218	Depositor DCC
$R_{free}$ test set	2192 reflections (5.07%)	DCC
Wilson B-factor (Å <sup>2</sup> )	48.1	Xtriage
Anisotropy	0.514	Xtriage
Bulk solvent $k_{sol}$ (e/Å <sup>3</sup> ), $B_{sol}$ (Å <sup>2</sup> )	0.38 , 42.9	EDS
Estimated twinning fraction	No twinning to report.	Xtriage
L-test for twinning	$\langle  L  \rangle = 0.48$ , $\langle L^2 \rangle = 0.31$	Xtriage
Outliers	2 of 43306 reflections (0.005%)	Xtriage
$F_o, F_c$ correlation	0.96	EDS
Total number of atoms	8591	wwPDB-VP
Average B, all atoms (Å <sup>2</sup> )	60.0	wwPDB-VP

Xtriage's analysis on translational NCS is as follows: *The largest off-origin peak in the Patterson function is 3.11% of the height of the origin peak. No significant pseudotranslation is detected.*

<sup>1</sup>Intensities estimated from amplitudes.

## 5 Model quality

### 5.1 Standard geometry

Bond lengths and bond angles in the following residue types are not validated in this section: 2D5, TRS

The Z score for a bond length (or angle) is the number of standard deviations the observed value is removed from the expected value. A bond length (or angle) with  $|Z| > 5$  is considered an outlier worth inspection. RMSZ is the root-mean-square of all Z scores of the bond lengths (or angles).

Mol	Chain	Bond lengths		Bond angles	
		RMSZ	$\# Z  > 5$	RMSZ	$\# Z  > 5$
1	A	0.66	0/2121	0.70	0/2888
1	B	0.58	0/2075	0.68	0/2822
All	All	0.62	0/4196	0.69	0/5710

There are no bond length outliers.

There are no bond angle outliers.

There are no chirality outliers.

There are no planarity outliers.

### 5.2 Close contacts

In the following table, the Non-H and H(model) columns list the number of non-hydrogen atoms and hydrogen atoms in the chain respectively. The H(added) column lists the number of hydrogens added by MolProbity. The Clashes column lists the number of clashes within the asymmetric unit, and the number in parentheses is this value normalized per 1000 atoms of the molecule in the chain. The Symm-Clashes column gives symmetry related clashes, in the same way as for the Clashes column.

Mol	Chain	Non-H	H(model)	H(added)	Clashes	Symm-Clashes
1	A	2065	2021	20	29	0
1	B	2024	2004	0	16	0
2	A	70	58	0	21	0
2	B	70	58	0	12	0
3	A	8	12	0	10	0
3	B	8	12	0	8	0
4	A	101	0	0	2	0
4	B	80	0	0	1	0
All	All	4426	4165	20	55	0



Clashscore is defined as the number of clashes calculated for the entry per 1000 atoms (including hydrogens) of the entry. The overall clashscore for this entry is 7.

All (55) close contacts within the same asymmetric unit are listed below.

Atom-1	Atom-2	Distance(Å)	Clash(Å)
2:A:301[B]:2D5:S19	3:A:302:TRS:N	2.32	1.01
2:A:301[A]:2D5:S19	3:A:302:TRS:N	2.32	1.01
2:B:301[A]:2D5:S19	3:B:302:TRS:N	2.49	0.85
1:A:182:PHE:HB3	2:A:301[B]:2D5:H222	1.69	0.74
1:A:57:LYS:NZ	2:A:301[B]:2D5:H311	2.07	0.70
1:A:182:PHE:HB3	2:A:301[A]:2D5:H222	1.74	0.70
2:B:301[B]:2D5:S19	3:B:302:TRS:N	2.63	0.70
3:A:302:TRS:O3	3:A:302:TRS:O1	2.06	0.68
1:A:35:TYR:OH	2:A:301[B]:2D5:H202	1.95	0.66
1:A:182:PHE:O	2:A:301[B]:2D5:H212	1.98	0.64
1:A:35:TYR:CZ	2:A:301[A]:2D5:H202	2.33	0.63
1:A:254:ARG:NH1	4:A:448:HOH:O	2.32	0.61
1:B:181:ALA:O	3:B:302:TRS:H21	2.00	0.61
3:B:302:TRS:O2	3:B:302:TRS:O1	2.11	0.60
1:B:182:PHE:HB3	2:B:301[B]:2D5:H221	1.83	0.60
1:A:35:TYR:CZ	2:A:301[B]:2D5:H202	2.37	0.59
1:A:182:PHE:HB2	3:A:302:TRS:H12	1.83	0.59
1:A:181:ALA:O	3:A:302:TRS:H11	2.04	0.58
1:A:35:TYR:OH	2:A:301[A]:2D5:H202	2.03	0.58
1:A:80:SER:O	3:A:302:TRS:H21	2.06	0.56
1:A:241:GLU:OE1	1:A:245:ARG:NE	2.39	0.55
1:A:57:LYS:HZ2	2:A:301[B]:2D5:H311	1.73	0.54
1:A:57:LYS:HZ3	2:A:301[B]:2D5:H311	1.73	0.53
2:A:301[A]:2D5:H261	2:A:301[A]:2D5:H221	1.74	0.53
1:A:112:ARG:NH2	4:A:416:HOH:O	2.36	0.52
2:A:301[A]:2D5:N26	2:A:301[A]:2D5:C22	2.73	0.52
1:A:182:PHE:HB3	2:A:301[B]:2D5:C22	2.36	0.52
1:A:35:TYR:CE1	2:A:301[A]:2D5:H202	2.45	0.51
1:B:182:PHE:O	2:B:301[A]:2D5:H202	2.11	0.51
1:B:80:SER:C	3:B:302:TRS:H31	2.30	0.51
1:A:48:CYS:CB	1:B:139:CYS:HG	2.23	0.50
1:B:80:SER:O	3:B:302:TRS:H31	2.11	0.50
1:A:29:ARG:HB3	1:A:227:ALA:HB2	1.94	0.49
1:B:50:PRO:O	1:B:59:ARG:NH2	2.42	0.49
1:A:80:SER:O	3:A:302:TRS:C2	2.60	0.49
1:A:182:PHE:CD1	2:A:301[B]:2D5:H251	2.47	0.49
2:B:301[B]:2D5:H251	4:B:407:HOH:O	2.14	0.48
1:A:57:LYS:NZ	2:A:301[A]:2D5:H291	2.28	0.48
1:B:222:TYR:CZ	2:B:301[B]:2D5:H212	2.48	0.48

*Continued on next page...*

Continued from previous page...

Atom-1	Atom-2	Distance(Å)	Clash(Å)
1:A:182:PHE:O	2:A:301[A]:2D5:H212	2.14	0.47
1:B:57:LYS:NZ	2:B:301[A]:2D5:H311	2.29	0.47
1:B:222:TYR:CZ	2:B:301[A]:2D5:H212	2.50	0.47
1:B:35:TYR:CE1	2:B:301[A]:2D5:H211	2.50	0.47
3:B:302:TRS:HO2	3:B:302:TRS:HO1	1.57	0.46
1:B:182:PHE:O	2:B:301[B]:2D5:H202	2.16	0.45
1:A:53:VAL:HG21	2:A:301[A]:2D5:H311	1.98	0.45
2:A:301[A]:2D5:N26	2:A:301[A]:2D5:H221	2.31	0.45
1:A:181:ALA:O	3:A:302:TRS:C1	2.66	0.43
1:A:59:ARG:HG2	1:A:63:GLN:NE2	2.33	0.43
1:A:83:THR:CG2	3:A:302:TRS:H31	2.49	0.41
1:B:83:THR:CG2	3:B:302:TRS:H11	2.51	0.41
1:B:35:TYR:HE1	2:B:301[A]:2D5:H211	1.85	0.41
1:B:252:ASP:OD2	1:B:254:ARG:HD3	2.20	0.41
1:B:53:VAL:HG21	2:B:301[B]:2D5:H311	2.02	0.41
1:A:181:ALA:HB3	3:A:302:TRS:H11	2.04	0.40

There are no symmetry-related clashes.

## 5.3 Torsion angles

### 5.3.1 Protein backbone ⓘ

In the following table, the Percentiles column shows the percent Ramachandran outliers of the chain as a percentile score with respect to all X-ray entries followed by that with respect to entries of similar resolution.

The Analysed column shows the number of residues for which the backbone conformation was analysed, and the total number of residues.

Mol	Chain	Analysed	Favoured	Allowed	Outliers	Percentiles	
1	A	263/289 (91%)	257 (98%)	6 (2%)	0	100	100
1	B	255/289 (88%)	252 (99%)	3 (1%)	0	100	100
All	All	518/578 (90%)	509 (98%)	9 (2%)	0	100	100

There are no Ramachandran outliers to report.

### 5.3.2 Protein sidechains ⓘ

In the following table, the Percentiles column shows the percent sidechain outliers of the chain as a percentile score with respect to all X-ray entries followed by that with respect to entries of

similar resolution. The Analysed column shows the number of residues for which the sidechain conformation was analysed, and the total number of residues.

Mol	Chain	Analysed	Rotameric	Outliers	Percentiles	
1	A	216/233 (93%)	210 (97%)	6 (3%)	56	67
1	B	213/233 (91%)	210 (99%)	3 (1%)	78	88
All	All	429/466 (92%)	420 (98%)	9 (2%)	66	78

All (9) residues with a non-rotameric sidechain are listed below:

Mol	Chain	Res	Type
1	A	84	VAL
1	A	92	SER
1	A	145	ARG
1	A	226	GLU
1	A	229	LEU
1	A	241	GLU
1	B	139	CYS
1	B	191	LEU
1	B	254	ARG

Some sidechains can be flipped to improve hydrogen bonding and reduce clashes. There are no such sidechains identified.

### 5.3.3 RNA ⓘ

There are no RNA chains in this entry.

## 5.4 Non-standard residues in protein, DNA, RNA chains ⓘ

There are no non-standard protein/DNA/RNA residues in this entry.

## 5.5 Carbohydrates ⓘ

There are no carbohydrates in this entry.

## 5.6 Ligand geometry ⓘ

6 ligands are modelled in this entry.

In the following table, the Counts columns list the number of bonds (or angles) for which Mogul statistics could be retrieved, the number of bonds (or angles) that are observed in the model and the number of bonds (or angles) that are defined in the chemical component dictionary. The Link column lists molecule types, if any, to which the group is linked. The Z score for a bond length (or angle) is the number of standard deviations the observed value is removed from the expected value. A bond length (or angle) with  $|Z| > 2$  is considered an outlier worth inspection. RMSZ is the root-mean-square of all Z scores of the bond lengths (or angles).

Mol	Type	Chain	Res	Link	Bond lengths			Bond angles		
					Counts	RMSZ	# $ Z  > 2$	Counts	RMSZ	# $ Z  > 2$
2	2D5	A	301[A]	-	39,39,39	2.74	15 (38%)	55,55,55	2.59	19 (34%)
2	2D5	A	301[B]	-	39,39,39	2.65	15 (38%)	55,55,55	2.59	16 (29%)
3	TRS	A	302	-	7,7,7	1.25	0	9,9,9	2.42	3 (33%)
2	2D5	B	301[A]	-	39,39,39	2.55	15 (38%)	55,55,55	2.61	15 (27%)
2	2D5	B	301[B]	-	39,39,39	2.69	15 (38%)	55,55,55	2.99	19 (34%)
3	TRS	B	302	-	7,7,7	1.52	1 (14%)	9,9,9	2.75	4 (44%)

In the following table, the Chirals column lists the number of chiral outliers, the number of chiral centers analysed, the number of these observed in the model and the number defined in the chemical component dictionary. Similar counts are reported in the Torsion and Rings columns. '-' means no outliers of that kind were identified.

Mol	Type	Chain	Res	Link	Chirals	Torsions	Rings
2	2D5	A	301[A]	-	-	0/17/42/42	0/5/5/5
2	2D5	A	301[B]	-	-	0/17/42/42	0/5/5/5
3	TRS	A	302	-	-	0/9/9/9	0/0/0/0
2	2D5	B	301[A]	-	-	0/17/42/42	0/5/5/5
2	2D5	B	301[B]	-	-	0/17/42/42	0/5/5/5
3	TRS	B	302	-	-	0/9/9/9	0/0/0/0

All (61) bond length outliers are listed below:

Mol	Chain	Res	Type	Atoms	Z	Observed(Å)	Ideal(Å)
2	B	301[B]	2D5	C27-N26	9.44	1.58	1.46
2	B	301[A]	2D5	C27-N26	7.92	1.56	1.46
2	A	301[A]	2D5	C27-N26	7.81	1.56	1.46
2	A	301[B]	2D5	C27-N26	7.51	1.56	1.46
2	A	301[B]	2D5	C16-C11	-6.47	1.44	1.53
2	A	301[A]	2D5	C16-C11	-6.39	1.44	1.53
2	B	301[A]	2D5	C06-N05	5.46	1.44	1.35
2	B	301[B]	2D5	C06-N05	5.45	1.43	1.35
2	B	301[B]	2D5	C16-C11	-5.19	1.46	1.53
2	B	301[A]	2D5	C16-C11	-5.18	1.46	1.53

*Continued on next page...*

*Continued from previous page...*

Mol	Chain	Res	Type	Atoms	Z	Observed(Å)	Ideal(Å)
2	A	301[A]	2D5	C29-C28	-5.04	1.30	1.39
2	A	301[B]	2D5	C06-N05	4.91	1.43	1.35
2	A	301[A]	2D5	C06-N05	4.89	1.43	1.35
2	A	301[B]	2D5	C34-C25	-4.47	1.45	1.53
2	B	301[B]	2D5	C24-N23	4.30	1.42	1.33
2	A	301[A]	2D5	C34-C25	-4.24	1.45	1.53
2	A	301[B]	2D5	C29-C28	-4.08	1.32	1.39
2	B	301[A]	2D5	O12-C11	3.99	1.46	1.41
2	B	301[B]	2D5	O12-C11	3.97	1.46	1.41
2	B	301[B]	2D5	C04-N03	3.96	1.41	1.33
2	B	301[A]	2D5	C24-N23	3.93	1.42	1.33
2	B	301[A]	2D5	C04-N03	3.89	1.41	1.33
2	A	301[B]	2D5	O12-C13	-3.83	1.36	1.45
2	A	301[A]	2D5	C24-N23	3.81	1.41	1.33
2	A	301[A]	2D5	O12-C13	-3.73	1.36	1.45
2	B	301[A]	2D5	C34-C25	-3.70	1.46	1.53
2	A	301[B]	2D5	C04-N03	3.45	1.40	1.33
2	A	301[A]	2D5	C04-N03	3.43	1.40	1.33
2	A	301[B]	2D5	C04-N05	-3.28	1.26	1.32
2	A	301[A]	2D5	C04-N05	-3.25	1.26	1.32
2	B	301[B]	2D5	C06-N10	3.21	1.42	1.37
2	B	301[B]	2D5	C34-C25	-3.19	1.47	1.53
2	B	301[B]	2D5	C29-C28	-3.13	1.34	1.39
2	B	301[A]	2D5	C06-N10	3.11	1.42	1.37
2	A	301[A]	2D5	C34-C33	-3.07	1.46	1.51
2	B	301[A]	2D5	C29-C28	-3.06	1.34	1.39
2	A	301[B]	2D5	C16-C14	-3.06	1.45	1.53
2	A	301[A]	2D5	C16-C14	-3.03	1.45	1.53
2	B	301[B]	2D5	C30-C29	3.02	1.45	1.38
2	A	301[B]	2D5	C11-N10	-2.87	1.39	1.48
2	B	301[A]	2D5	C30-C29	2.86	1.44	1.38
2	A	301[A]	2D5	C11-N10	-2.83	1.39	1.48
2	A	301[B]	2D5	C24-N23	2.82	1.39	1.33
3	B	302	TRS	C-N	-2.72	1.46	1.50
2	B	301[A]	2D5	C09-N10	2.67	1.40	1.36
2	B	301[B]	2D5	C09-N10	2.62	1.40	1.36
2	B	301[B]	2D5	C16-C14	-2.46	1.46	1.53
2	B	301[A]	2D5	C16-C14	-2.43	1.46	1.53
2	A	301[A]	2D5	C14-C13	-2.37	1.46	1.53
2	A	301[B]	2D5	C14-C13	-2.33	1.46	1.53
2	A	301[B]	2D5	C20-S19	-2.30	1.72	1.81
2	A	301[A]	2D5	C31-C30	-2.28	1.32	1.38

*Continued on next page...*

*Continued from previous page...*

Mol	Chain	Res	Type	Atoms	Z	Observed(Å)	Ideal(Å)
2	A	301[A]	2D5	O15-C14	-2.23	1.37	1.43
2	A	301[B]	2D5	O15-C14	-2.22	1.37	1.43
2	B	301[B]	2D5	C04-N05	-2.22	1.28	1.32
2	B	301[A]	2D5	C04-N05	-2.20	1.28	1.32
2	B	301[B]	2D5	C14-C13	-2.16	1.47	1.53
2	B	301[A]	2D5	C14-C13	-2.14	1.47	1.53
2	A	301[B]	2D5	C34-C33	-2.08	1.47	1.51
2	B	301[A]	2D5	O12-C13	-2.05	1.40	1.45
2	B	301[B]	2D5	O12-C13	-2.01	1.40	1.45

All (76) bond angle outliers are listed below:

Mol	Chain	Res	Type	Atoms	Z	Observed(°)	Ideal(°)
2	B	301[B]	2D5	N05-C04-N03	-8.77	121.17	128.89
2	B	301[A]	2D5	N05-C04-N03	-8.73	121.21	128.89
2	A	301[B]	2D5	N05-C04-N03	-7.71	122.11	128.89
2	A	301[A]	2D5	N05-C04-N03	-7.71	122.11	128.89
2	B	301[A]	2D5	C27-N26-C25	7.69	117.16	110.86
2	B	301[B]	2D5	C07-C06-N05	-7.50	118.67	125.98
2	B	301[A]	2D5	C07-C06-N05	-7.39	118.78	125.98
2	B	301[B]	2D5	C25-C24-N23	7.36	131.33	116.75
2	B	301[B]	2D5	C33-C34-C25	7.32	119.14	111.33
2	A	301[B]	2D5	C07-C06-N05	-7.01	119.14	125.98
2	A	301[A]	2D5	C07-C06-N05	-6.97	119.18	125.98
2	A	301[B]	2D5	C27-N26-C25	6.86	116.47	110.86
2	B	301[B]	2D5	C27-N26-C25	6.51	116.19	110.86
2	A	301[A]	2D5	C27-N26-C25	5.77	115.59	110.86
2	A	301[B]	2D5	N05-C06-N10	5.73	135.22	125.39
2	A	301[A]	2D5	N05-C06-N10	5.70	135.17	125.39
2	B	301[B]	2D5	N05-C06-N10	5.55	134.91	125.39
2	A	301[A]	2D5	C25-C24-N23	5.53	127.72	116.75
2	B	301[A]	2D5	N05-C06-N10	5.48	134.79	125.39
2	A	301[B]	2D5	C25-C24-N23	5.33	127.31	116.75
2	B	301[A]	2D5	C13-O12-C11	-5.12	104.09	109.72
2	A	301[B]	2D5	C24-C25-N26	-5.01	96.60	110.62
2	A	301[A]	2D5	C21-C22-N23	4.95	126.92	112.20
2	B	301[B]	2D5	C13-O12-C11	-4.93	104.30	109.72
2	B	301[A]	2D5	C34-C25-N26	4.90	120.78	111.31
3	A	302	TRS	C1-C-N	4.63	116.50	108.10
2	B	301[B]	2D5	C34-C25-N26	4.63	120.25	111.31
2	A	301[B]	2D5	C13-O12-C11	-4.50	104.77	109.72
2	B	301[B]	2D5	C21-C22-N23	4.30	125.01	112.20

*Continued on next page...*

*Continued from previous page...*

Mol	Chain	Res	Type	Atoms	Z	Observed(°)	Ideal(°)
3	B	302	TRS	C2-C-N	4.27	115.84	108.10
2	A	301[A]	2D5	C13-O12-C11	-4.23	105.07	109.72
3	B	302	TRS	O2-C2-C	-4.19	102.78	111.28
2	A	301[B]	2D5	O35-C24-C25	-4.14	111.22	120.31
2	A	301[A]	2D5	C33-C34-C25	3.96	115.56	111.33
2	B	301[B]	2D5	O35-C24-C25	-3.92	111.69	120.31
3	B	302	TRS	C3-C-C1	3.82	119.05	110.78
3	A	302	TRS	O2-C2-C	3.75	118.89	111.28
2	A	301[A]	2D5	O12-C11-C16	-3.46	101.66	106.69
2	A	301[B]	2D5	O12-C11-C16	-3.41	101.72	106.69
2	A	301[B]	2D5	C34-C25-N26	3.36	117.79	111.31
2	A	301[A]	2D5	O35-C24-N23	-3.34	116.34	123.07
2	B	301[B]	2D5	C21-C20-S19	3.34	124.59	113.77
2	A	301[A]	2D5	C21-C20-S19	3.30	124.47	113.77
2	B	301[A]	2D5	C33-C34-C25	3.25	114.80	111.33
2	B	301[B]	2D5	O35-C24-N23	-3.05	116.92	123.07
2	A	301[B]	2D5	C09-N10-C06	3.00	109.40	106.96
2	A	301[A]	2D5	C34-C25-N26	2.91	116.92	111.31
2	B	301[B]	2D5	C34-C25-C24	-2.86	105.49	110.53
3	B	302	TRS	C2-C-C1	-2.86	104.60	110.78
2	A	301[A]	2D5	C09-N10-C06	2.84	109.26	106.96
3	A	302	TRS	C3-C-C1	-2.82	104.67	110.78
2	B	301[B]	2D5	O12-C11-N10	2.79	114.18	108.10
2	B	301[B]	2D5	C04-N05-C06	2.75	121.17	113.27
2	B	301[A]	2D5	C04-N05-C06	2.70	121.05	113.27
2	B	301[A]	2D5	O12-C11-N10	2.64	113.85	108.10
2	A	301[B]	2D5	C04-N05-C06	2.51	120.50	113.27
2	A	301[A]	2D5	C04-N05-C06	2.51	120.48	113.27
2	B	301[A]	2D5	C21-C20-S19	2.44	121.68	113.77
2	B	301[B]	2D5	O12-C11-C16	-2.41	103.18	106.69
2	A	301[B]	2D5	C11-N10-C06	-2.35	122.58	126.64
2	B	301[A]	2D5	C25-C24-N23	2.34	121.39	116.75
2	A	301[A]	2D5	C11-N10-C06	-2.29	122.67	126.64
2	B	301[A]	2D5	O12-C11-C16	-2.28	103.37	106.69
2	B	301[A]	2D5	C09-N10-C06	2.25	108.79	106.96
2	A	301[A]	2D5	C32-C33-C28	2.23	121.51	118.96
2	A	301[B]	2D5	C21-C22-N23	2.20	118.75	112.20
2	B	301[B]	2D5	C09-N10-C06	2.17	108.72	106.96
2	B	301[A]	2D5	C18-C13-C14	-2.10	109.54	114.98
2	B	301[A]	2D5	C20-C21-C22	2.09	121.18	113.36
2	A	301[B]	2D5	C21-C20-S19	2.09	120.54	113.77
2	A	301[A]	2D5	C34-C33-C32	-2.07	115.90	121.45

*Continued on next page...*

*Continued from previous page...*

Mol	Chain	Res	Type	Atoms	Z	Observed(°)	Ideal(°)
2	B	301[B]	2D5	C32-C33-C28	2.04	121.30	118.96
2	B	301[B]	2D5	C18-C13-C14	-2.04	109.71	114.98
2	A	301[A]	2D5	C18-S19-C20	2.03	108.50	102.45
2	A	301[B]	2D5	C18-S19-C20	2.03	108.48	102.45
2	A	301[A]	2D5	O35-C24-C25	-2.01	115.90	120.31

There are no chirality outliers.

There are no torsion outliers.

There are no ring outliers.

## 5.7 Other polymers ⓘ

There are no such residues in this entry.

## 5.8 Polymer linkage issues

There are no chain breaks in this entry.



## 6 Fit of model and data ⓘ

### 6.1 Protein, DNA and RNA chains ⓘ

In the following table, the column labelled ‘#RSRZ> 2’ contains the number (and percentage) of RSRZ outliers, followed by percent RSRZ outliers for the chain as percentile scores relative to all X-ray entries and entries of similar resolution. The OWAB column contains the minimum, median, 95<sup>th</sup> percentile and maximum values of the occupancy-weighted average B-factor per residue. The column labelled ‘Q< 0.9’ lists the number of (and percentage) of residues with an average occupancy less than 0.9.

Mol	Chain	Analysed	<RSRZ>	#RSRZ>2	OWAB(Å <sup>2</sup> )	Q<0.9
1	A	264/289 (91%)	-0.19	11 (4%) 35 35	39, 51, 70, 100	0
1	B	255/289 (88%)	-0.21	4 (1%) 68 69	39, 55, 79, 99	0
All	All	519/578 (89%)	-0.20	15 (2%) 49 50	39, 54, 76, 100	0

All (15) RSRZ outliers are listed below:

Mol	Chain	Res	Type	RSRZ
1	A	226	GLU	3.8
1	A	227	ALA	3.6
1	B	118	PRO	3.1
1	B	168	GLY	3.0
1	B	119	GLY	2.7
1	A	167	ALA	2.6
1	A	79	GLY	2.6
1	A	214	ILE	2.5
1	A	84	VAL	2.4
1	A	180	SER	2.3
1	A	213	LEU	2.3
1	B	68	GLY	2.2
1	A	181	ALA	2.1
1	A	170	PRO	2.1
1	A	85	TYR	2.0

### 6.2 Non-standard residues in protein, DNA, RNA chains ⓘ

There are no non-standard protein/DNA/RNA residues in this entry.

### 6.3 Carbohydrates ⓘ

There are no carbohydrates in this entry.

## 6.4 Ligands

In the following table, the Atoms column lists the number of modelled atoms in the group and the number defined in the chemical component dictionary. LLDF column lists the quality of electron density of the group with respect to its neighbouring residues in protein, DNA or RNA chains. The B-factors column lists the minimum, median, 95<sup>th</sup> percentile and maximum values of B factors of atoms in the group. The column labelled 'Q< 0.9' lists the number of atoms with occupancy less than 0.9.

Mol	Type	Chain	Res	Atoms	RSR	LLDF	B-factors( $\text{\AA}^2$ )	Q<0.9
2	2D5	B	301[B]	35/35	0.16	0.90	49,65,81,94	64
2	2D5	B	301[A]	35/35	0.16	0.88	52,66,81,94	64
2	2D5	A	301[A]	35/35	0.16	0.47	43,59,77,81	64
2	2D5	A	301[B]	35/35	0.16	0.44	35,58,77,82	64
3	TRS	B	302	8/8	0.18	0.26	41,67,93,93	0
3	TRS	A	302	8/8	0.19	-0.06	39,61,83,83	0

## 6.5 Other polymers

There are no such residues in this entry.