



Full wwPDB X-ray Structure Validation Report

Jun 29, 2014 – 10:43 PM EDT

PDB ID : 4MV0
Title : IspH in complex with pyridin-2-ylmethyl diphosphate
Authors : Span, I.; Wang, K.; Song, Y.; Eisenreich, W.; Bacher, A.; Oldfield, E.; Groll, M.
Deposited on : 2013-09-23
Resolution : 1.90 Å(reported)

This is a full wwPDB validation report for a publicly released PDB entry.
We welcome your comments at validation@mail.wwpdb.org
A user guide is available at <http://wwpdb.org/ValidationPDFNotes.html>

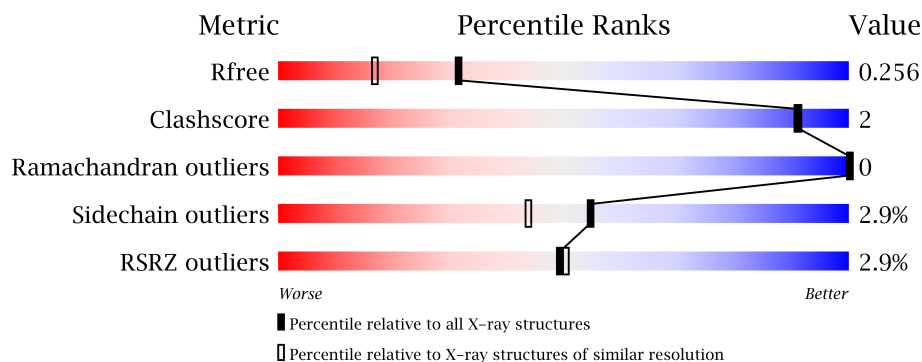
The following versions of software and data (see [references](#)) were used in the production of this report:

MolProbity : 4.02b-467
Mogul : 1.16 November 2013
Xtriage (Phenix) : dev-1439
EDS : stable23161
Percentile statistics : 21963
Refmac : 5.8.0049
CCP4 : 6.3.0 (Settle)
Ideal geometry (proteins) : Engh & Huber (2001)
Ideal geometry (DNA, RNA) : Parkinson et. al. (1996)
Validation Pipeline (wwPDB-VP) : stable23161

1 Overall quality at a glance

The reported resolution of this entry is 1.90 Å.

Percentile scores (ranging between 0-100) for global validation metrics of the entry are shown in the following graphic. The table shows the number of entries on which the scores are based.



Metric	Whole archive (#Entries)	Similar resolution (#Entries, resolution range(Å))
R_{free}	66092	3684 (1.90-1.90)
Clashscore	79885	4465 (1.90-1.90)
Ramachandran outliers	78287	4413 (1.90-1.90)
Sidechain outliers	78261	4414 (1.90-1.90)
RSRZ outliers	66119	3686 (1.90-1.90)

The table below summarises the geometric issues observed across the polymeric chains and their fit to the electron density. The red, orange, yellow and green segments on the lower bar indicate the fraction of residues that contain outliers for ≥ 3 , 2, 1 and 0 types of geometric quality criteria. The upper red bar (where present) indicates the fraction of residues that have poor fit to the electron density.

Mol	Chain	Length	Quality of chain
1	A	327	
1	B	327	

2 Entry composition i

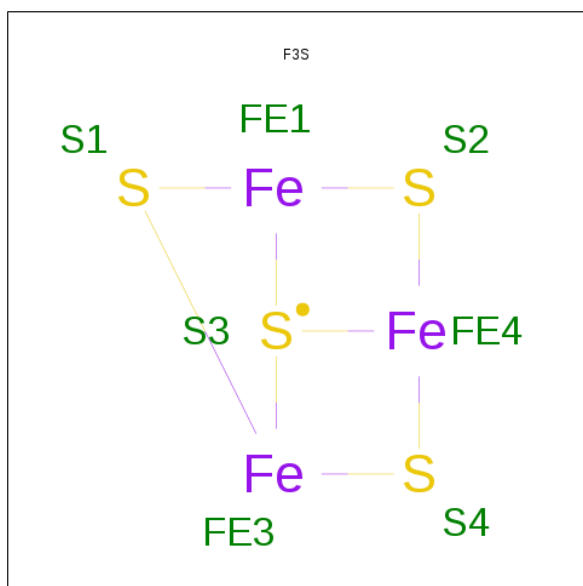
There are 4 unique types of molecules in this entry. The entry contains 5065 atoms, of which 0 are hydrogen and 0 are deuterium.

In the tables below, the ZeroOcc column contains the number of atoms modelled with zero occupancy, the AltConf column contains the number of residues with at least one atom in alternate conformation and the Trace column contains the number of residues modelled with at most 2 atoms.

- Molecule 1 is a protein called 4-hydroxy-3-methylbut-2-enyldiphosphate reductase.

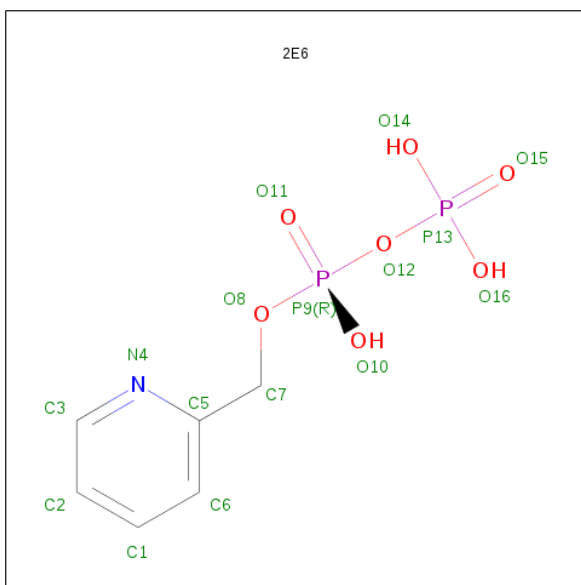
Mol	Chain	Residues	Atoms					ZeroOcc	AltConf	Trace
1	A	309	Total	C	N	O	S	0	0	0
			2383	1487	427	459	10			
1	B	310	Total	C	N	O	S	0	0	0
			2390	1492	428	460	10			

- Molecule 2 is FE3-S4 CLUSTER (three-letter code: F3S) (formula: Fe₃S₄).



Mol	Chain	Residues	Atoms			ZeroOcc	AltConf
2	A	1	Total	Fe	S	0	0
			7	3	4		
2	B	1	Total	Fe	S	0	0
			7	3	4		

- Molecule 3 is PYRIDIN-2-YLMETHYL TRIHYDROGEN DIPHOSPHATE (three-letter code: 2E6) (formula: C₆H₉NO₇P₂).



Mol	Chain	Residues	Atoms					ZeroOcc	AltConf
3	A	1	Total	C	N	O	P	0	0
			16	6	1	7	2		
3	B	1	Total	C	N	O	P	0	0
			16	6	1	7	2		

- Molecule 4 is water.

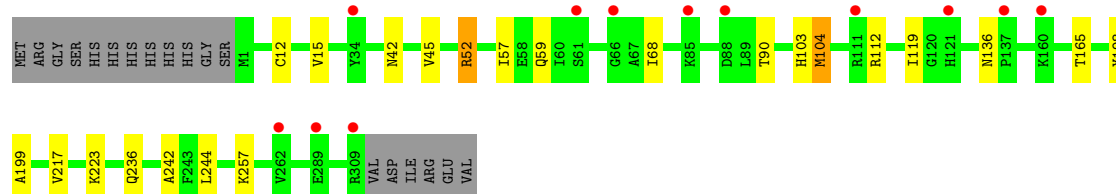
Mol	Chain	Residues	Atoms		ZeroOcc	AltConf
4	A	121	Total	O	0	0
			121	121		
4	B	125	Total	O	0	0
			125	125		

3 Residue-property plots

These plots are drawn for all protein, RNA and DNA chains in the entry. The first graphic for a chain summarises the proportions of errors displayed in the second graphic. The second graphic shows the sequence view annotated by issues in geometry and electron density. Residues are color-coded according to the number of geometric quality criteria for which they contain at least one outlier: green = 0, yellow = 1, orange = 2 and red = 3 or more. A red dot above a residue indicates a poor fit to the electron density ($RSRZ > 2$). Stretches of 2 or more consecutive residues without any outlier are shown as a green connector. Residues present in the sample, but not in the model, are shown in grey.

- Molecule 1: 4-hydroxy-3-methylbut-2-enyldiphosphate reductase

Chain A: 



- Molecule 1: 4-hydroxy-3-methylbut-2-enyldiphosphate reductase

Chain B: 



4 Data and refinement statistics

Property	Value	Source
Space group	P 21 21 21	Depositor
Cell constants a, b, c, α , β , γ	69.47Å 80.80Å 111.49Å 90.00° 90.00° 90.00°	Depositor
Resolution (Å)	14.97 – 1.90 14.97 – 1.90	Depositor EDS
% Data completeness (in resolution range)	98.5 (14.97-1.90) 98.8 (14.97-1.90)	Depositor EDS
R_{merge}	(Not available)	Depositor
R_{sym}	0.09	Depositor
$\langle I/\sigma(I) \rangle$ ¹	2.67 (at 1.90Å)	Xtriage
Refinement program	REFMAC 5.8.0049	Depositor
R, R_{free}	0.218 , 0.256 0.219 , 0.256	Depositor DCC
R_{free} test set	2472 reflections (5.26%)	DCC
Wilson B-factor (Å ²)	27.0	Xtriage
Anisotropy	0.146	Xtriage
Bulk solvent k_{sol} (e/Å ³), B_{sol} (Å ²)	0.37 , 36.7	EDS
Estimated twinning fraction	No twinning to report.	Xtriage
L-test for twinning	$\langle L \rangle = 0.46$, $\langle L^2 \rangle = 0.29$	Xtriage
Outliers	0 of 49442 reflections	Xtriage
F_o, F_c correlation	0.95	EDS
Total number of atoms	5065	wwPDB-VP
Average B, all atoms (Å ²)	36.0	wwPDB-VP

Xtriage's analysis on translational NCS is as follows: *The analyses of the Patterson function reveals a significant off-origin peak that is 50.06 % of the origin peak, indicating pseudo translational symmetry. The chance of finding a peak of this or larger height randomly in a structure without pseudo translational symmetry is equal to 6.8285e-05. The detected translational NCS is most likely also responsible for the elevated intensity ratio.*

¹Intensities estimated from amplitudes.

5 Model quality

5.1 Standard geometry

Bond lengths and bond angles in the following residue types are not validated in this section: F3S, 2E6

The Z score for a bond length (or angle) is the number of standard deviations the observed value is removed from the expected value. A bond length (or angle) with $|Z| > 5$ is considered an outlier worth inspection. RMSZ is the root-mean-square of all Z scores of the bond lengths (or angles).

Mol	Chain	Bond lengths		Bond angles	
		RMSZ	$\# Z > 5$	RMSZ	$\# Z > 5$
1	A	0.49	0/2418	0.69	0/3273
1	B	0.50	0/2425	0.69	1/3283 (0.0%)
All	All	0.50	0/4843	0.69	1/6556 (0.0%)

There are no bond length outliers.

All (1) bond angle outliers are listed below:

Mol	Chain	Res	Type	Atoms	Z	Observed(°)	Ideal(°)
1	B	230	ARG	NE-CZ-NH1	-6.08	117.26	120.30

There are no chirality outliers.

There are no planarity outliers.

5.2 Close contacts

In the following table, the Non-H and H(model) columns list the number of non-hydrogen atoms and hydrogen atoms in the chain respectively. The H(added) column lists the number of hydrogens added by MolProbity. The Clashes column lists the number of clashes within the asymmetric unit, and the number in parentheses is this value normalized per 1000 atoms of the molecule in the chain. The Symm-Clashes column gives symmetry related clashes, in the same way as for the Clashes column.

Mol	Chain	Non-H	H(model)	H(added)	Clashes	Symm-Clashes
1	A	2383	0	2395	13	0
1	B	2390	0	2404	6	0
2	A	7	0	0	0	0
2	B	7	0	0	0	0
3	A	16	0	0	0	0
3	B	16	0	0	0	0

Continued on next page...

Continued from previous page...

Mol	Chain	Non-H	H(model)	H(added)	Clashes	Symm-Clashes
4	A	121	0	0	2	0
4	B	125	0	0	1	0
All	All	5065	0	4799	19	0

Clashscore is defined as the number of clashes calculated for the entry per 1000 atoms (including hydrogens) of the entry. The overall clashscore for this entry is 2.

All (19) close contacts within the same asymmetric unit are listed below.

Atom-1	Atom-2	Distance(Å)	Clash(Å)
1:A:42:ASN:HD22	1:A:45:VAL:H	1.43	0.65
1:B:42:ASN:HD22	1:B:45:VAL:H	1.43	0.65
1:A:52:ARG:NE	1:A:52:ARG:HA	2.20	0.55
1:A:236:GLN:HG3	1:A:242:ALA:HB3	1.91	0.52
1:A:217:VAL:O	1:A:242:ALA:HA	2.14	0.48
1:A:104:MET:CE	1:A:104:MET:HA	2.44	0.47
1:A:68:ILE:HD13	1:A:90:THR:HB	1.96	0.47
1:A:12:CYS:SG	1:A:15:VAL:HG23	2.55	0.47
1:B:103:HIS:HD2	4:B:529:HOH:O	2.00	0.45
1:B:113:GLY:HA2	1:B:136:ASN:OD1	2.17	0.45
1:B:236:GLN:HG3	1:B:242:ALA:HB3	1.98	0.44
1:B:310:VAL:O	1:B:310:VAL:HG12	2.17	0.44
1:A:103:HIS:HE1	4:A:510:HOH:O	1.99	0.44
1:A:119:ILE:HD12	1:A:165:THR:HG22	2.00	0.43
1:A:223:LYS:NZ	1:A:244:LEU:O	2.52	0.42
1:B:230:ARG:HD3	1:B:230:ARG:HA	1.86	0.42
1:A:198:TYR:CG	1:A:199:ALA:N	2.88	0.41
1:A:103:HIS:CE1	4:A:510:HOH:O	2.72	0.41
1:A:57:ILE:HD13	1:A:59:GLN:O	2.20	0.41

There are no symmetry-related clashes.

5.3 Torsion angles

5.3.1 Protein backbone ⓘ

In the following table, the Percentiles column shows the percent Ramachandran outliers of the chain as a percentile score with respect to all X-ray entries followed by that with respect to entries of similar resolution. The Analysed column shows the number of residues for which the backbone conformation was analysed, and the total number of residues.

Mol	Chain	Analysed	Favoured	Allowed	Outliers	Percentiles	
1	A	307/327 (94%)	303 (99%)	4 (1%)	0	100	100
1	B	308/327 (94%)	305 (99%)	3 (1%)	0	100	100
All	All	615/654 (94%)	608 (99%)	7 (1%)	0	100	100

There are no Ramachandran outliers to report.

5.3.2 Protein sidechains ⓘ

In the following table, the Percentiles column shows the percent sidechain outliers of the chain as a percentile score with respect to all X-ray entries followed by that with respect to entries of similar resolution. The Analysed column shows the number of residues for which the sidechain conformation was analysed, and the total number of residues.

Mol	Chain	Analysed	Rotameric	Outliers	Percentiles	
1	A	257/273 (94%)	252 (98%)	5 (2%)	69	63
1	B	258/273 (94%)	248 (96%)	10 (4%)	43	30
All	All	515/546 (94%)	500 (97%)	15 (3%)	55	44

All (15) residues with a non-rotameric sidechain are listed below:

Mol	Chain	Res	Type
1	A	52	ARG
1	A	104	MET
1	A	112	ARG
1	A	136	ASN
1	A	257	LYS
1	B	5	LEU
1	B	103	HIS
1	B	136	ASN
1	B	148	ASP
1	B	152	LYS
1	B	207	VAL
1	B	230	ARG
1	B	260	LYS
1	B	284	GLN
1	B	294	GLU

Some sidechains can be flipped to improve hydrogen bonding and reduce clashes. All (15) such sidechains are listed below:

Mol	Chain	Res	Type
1	A	42	ASN
1	A	103	HIS
1	A	136	ASN
1	A	229	ASN
1	A	252	GLN
1	A	283	GLN
1	B	2	GLN
1	B	42	ASN
1	B	78	GLN
1	B	103	HIS
1	B	133	GLN
1	B	213	GLN
1	B	229	ASN
1	B	277	ASN
1	B	283	GLN

5.3.3 RNA ⓘ

There are no RNA chains in this entry.

5.4 Non-standard residues in protein, DNA, RNA chains ⓘ

There are no non-standard protein/DNA/RNA residues in this entry.

5.5 Carbohydrates ⓘ

There are no carbohydrates in this entry.

5.6 Ligand geometry ⓘ

4 ligands are modelled in this entry.

In the following table, the Counts columns list the number of bonds (or angles) for which Mogul statistics could be retrieved, the number of bonds (or angles) that are observed in the model and the number of bonds (or angles) that are defined in the chemical component dictionary. The Link column lists molecule types, if any, to which the group is linked. The Z score for a bond length (or angle) is the number of standard deviations the observed value is removed from the expected value. A bond length (or angle) with $|Z| > 2$ is considered an outlier worth inspection. RMSZ is the root-mean-square of all Z scores of the bond lengths (or angles).

Mol	Type	Chain	Res	Link	Bond lengths			Bond angles		
					Counts	RMSZ	# Z > 2	Counts	RMSZ	# Z > 2
2	F3S	A	401	1	3,9,9	3.65	1 (33%)	0,15,15	0.00	-
3	2E6	A	402	-	16,16,16	1.18	2 (12%)	23,23,23	1.43	5 (21%)
2	F3S	B	401	1	3,9,9	6.17	2 (66%)	0,15,15	0.00	-
3	2E6	B	402	-	16,16,16	0.72	0	23,23,23	1.51	4 (17%)

In the following table, the Chirals column lists the number of chiral outliers, the number of chiral centers analysed, the number of these observed in the model and the number defined in the chemical component dictionary. Similar counts are reported in the Torsion and Rings columns. '-' means no outliers of that kind were identified.

Mol	Type	Chain	Res	Link	Chirals	Torsions	Rings
2	F3S	A	401	1	-	0/0/24/24	0/0/3/3
3	2E6	A	402	-	-	0/12/12/12	0/1/1/1
2	F3S	B	401	1	-	0/0/24/24	0/0/3/3
3	2E6	B	402	-	-	0/12/12/12	0/1/1/1

All (5) bond length outliers are listed below:

Mol	Chain	Res	Type	Atoms	Z	Observed(Å)	Ideal(Å)
2	B	401	F3S	S3-FE3	-10.11	2.26	2.33
2	A	401	F3S	S3-FE3	-6.06	2.29	2.33
2	B	401	F3S	S3-FE4	-2.94	2.31	2.33
3	A	402	2E6	P13-O15	2.61	1.59	1.51
3	A	402	2E6	P9-O11	2.02	1.58	1.51

All (9) bond angle outliers are listed below:

Mol	Chain	Res	Type	Atoms	Z	Observed(°)	Ideal(°)
3	B	402	2E6	C3-N4-C5	3.21	121.86	117.37
3	A	402	2E6	C3-N4-C5	2.99	121.55	117.37
3	A	402	2E6	O12-P9-O8	2.94	110.69	102.91
3	B	402	2E6	P9-O12-P13	-2.77	124.27	131.93
3	B	402	2E6	C6-C5-N4	-2.51	118.35	122.17
3	A	402	2E6	O14-P13-O16	2.44	116.52	107.38
3	A	402	2E6	C6-C5-N4	-2.27	118.72	122.17
3	B	402	2E6	O10-P9-O12	2.27	115.90	105.14
3	A	402	2E6	O14-P13-O12	2.09	115.07	105.14

There are no chirality outliers.

There are no torsion outliers.

There are no ring outliers.

5.7 Other polymers ⓘ

There are no such residues in this entry.

5.8 Polymer linkage issues

There are no chain breaks in this entry.

6 Fit of model and data ⓘ

6.1 Protein, DNA and RNA chains ⓘ

In the following table, the column labelled ‘#RSRZ > 2’ contains the number (and percentage) of RSRZ outliers, followed by percent RSRZ outliers for the chain as percentile scores relative to all X-ray entries and entries of similar resolution. The OWAB column contains the minimum, median, 95th percentile and maximum values of the occupancy-weighted average B-factor per residue. The column labelled ‘Q < 0.9’ lists the number of (and percentage) of residues with an average occupancy less than 0.9.

Mol	Chain	Analysed	<RSRZ>	#RSRZ>2	OWAB(Å ²)	Q<0.9
1	A	309/327 (94%)	0.28	12 (3%) 37 38	20, 34, 61, 77	0
1	B	310/327 (94%)	0.22	6 (1%) 64 65	20, 33, 58, 75	0
All	All	619/654 (94%)	0.25	18 (2%) 49 50	20, 33, 60, 77	0

All (18) RSRZ outliers are listed below:

Mol	Chain	Res	Type	RSRZ
1	B	310	VAL	3.4
1	A	137	PRO	3.3
1	A	66	GLY	3.0
1	A	88	ASP	2.7
1	B	262	VAL	2.6
1	A	111	ARG	2.4
1	A	61	SER	2.4
1	A	262	VAL	2.4
1	A	34	TYR	2.4
1	A	309	ARG	2.4
1	A	160	LYS	2.4
1	B	257	LYS	2.3
1	A	289	GLU	2.3
1	A	121	HIS	2.3
1	B	121	HIS	2.2
1	A	85	LYS	2.1
1	B	154	THR	2.1
1	B	309	ARG	2.0

6.2 Non-standard residues in protein, DNA, RNA chains ⓘ

There are no non-standard protein/DNA/RNA residues in this entry.

6.3 Carbohydrates ⓘ

There are no carbohydrates in this entry.

6.4 Ligands ⓘ

In the following table, the Atoms column lists the number of modelled atoms in the group and the number defined in the chemical component dictionary. LLDF column lists the quality of electron density of the group with respect to its neighbouring residues in protein, DNA or RNA chains. The B-factors column lists the minimum, median, 95th percentile and maximum values of B factors of atoms in the group. The column labelled 'Q< 0.9' lists the number of atoms with occupancy less than 0.9.

Mol	Type	Chain	Res	Atoms	RSR	LLDF	B-factors(Å ²)	Q<0.9
3	2E6	B	402	16/16	0.10	-0.10	20,22,24,25	0
3	2E6	A	402	16/16	0.09	-0.51	18,22,23,23	0
2	F3S	B	401	7/7	0.08	-0.70	20,20,20,20	0
2	F3S	A	401	7/7	0.07	-1.48	20,21,22,22	0

6.5 Other polymers ⓘ

There are no such residues in this entry.