



# Full wwPDB X-ray Structure Validation Report

Feb 27, 2014 – 02:48 AM GMT

PDB ID : 4MVC  
Title : Crystal Structure of a Mammalian Cytidylyltransferase  
Authors : Lee, J.; Cornell, R.B.  
Deposited on : 2013-09-23  
Resolution : 3.00 Å(reported)

This is a full wwPDB validation report for a publicly released PDB entry.  
We welcome your comments at [validation@mail.wwpdb.org](mailto:validation@mail.wwpdb.org)  
A user guide is available at <http://wwpdb.org/ValidationPDFNotes.html>

---

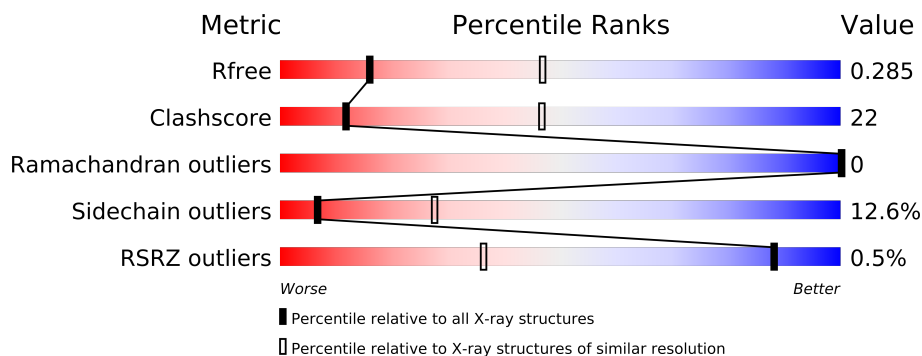
The following versions of software and data (see [references](#)) were used in the production of this report:

MolProbity : 4.02b-467  
Mogul : 1.15 2013  
Xtriage (Phenix) : dev-1323  
EDS : stable22639  
Percentile statistics : 21963  
Refmac : 5.8.0049  
CCP4 : 6.3.0 (Settle)  
Ideal geometry (proteins) : Engh & Huber (2001)  
Ideal geometry (DNA, RNA) : Parkinson et. al. (1996)  
Validation Pipeline (wwPDB-VP) : stable22683

# 1 Overall quality at a glance

The reported resolution of this entry is 3.00 Å.

Percentile scores (ranging between 0-100) for global validation metrics of the entry are shown in the following graphic. The table shows the number of entries on which the scores are based.



Metric	Whole archive (#Entries)	Similar resolution (#Entries, resolution range(Å))
$R_{free}$	66092	1216 (3.00-3.00)
Clashscore	79885	1594 (3.00-3.00)
Ramachandran outliers	78287	1537 (3.00-3.00)
Sidechain outliers	78261	1540 (3.00-3.00)
RSRZ outliers	66119	1217 (3.00-3.00)

The table below summarises the geometric issues observed across the polymeric chains and their fit to the electron density. The red, orange, yellow and green segments on the lower bar indicate the fraction of residues that contain outliers for  $\geq 3$ , 2, 1 and 0 types of geometric quality criteria. The upper red bar (where present) indicates the fraction of residues that have poor fit to the electron density.

Mol	Chain	Length	Quality of chain
1	A	300	
1	B	300	

## 2 Entry composition

There are 3 unique types of molecules in this entry. The entry contains 3194 atoms, of which 0 are hydrogen and 0 are deuterium.

In the tables below, the ZeroOcc column contains the number of atoms modelled with zero occupancy, the AltConf column contains the number of residues with at least one atom in alternate conformation and the Trace column contains the number of residues modelled with at most 2 atoms.

- Molecule 1 is a protein called Choline-phosphate cytidylyltransferase A.

Mol	Chain	Residues	Atoms					ZeroOcc	AltConf	Trace
1	A	205	Total	C	N	O	S	0	0	0
			1565	997	267	292	9			
1	B	204	Total	C	N	O	S	0	0	0
			1548	989	266	284	9			

There are 40 discrepancies between the modelled and reference sequences:

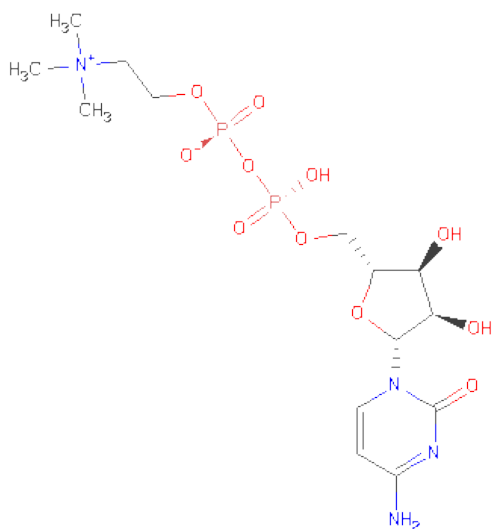
Chain	Residue	Modelled	Actual	Comment	Reference
A	-19	MET	-	EXPRESSION TAG	UNP P19836
A	-18	GLY	-	EXPRESSION TAG	UNP P19836
A	-17	SER	-	EXPRESSION TAG	UNP P19836
A	-16	SER	-	EXPRESSION TAG	UNP P19836
A	-15	HIS	-	EXPRESSION TAG	UNP P19836
A	-14	HIS	-	EXPRESSION TAG	UNP P19836
A	-13	HIS	-	EXPRESSION TAG	UNP P19836
A	-12	HIS	-	EXPRESSION TAG	UNP P19836
A	-11	HIS	-	EXPRESSION TAG	UNP P19836
A	-10	HIS	-	EXPRESSION TAG	UNP P19836
A	-9	SER	-	EXPRESSION TAG	UNP P19836
A	-8	SER	-	EXPRESSION TAG	UNP P19836
A	-7	GLY	-	EXPRESSION TAG	UNP P19836
A	-6	LEU	-	EXPRESSION TAG	UNP P19836
A	-5	VAL	-	EXPRESSION TAG	UNP P19836
A	-4	PRO	-	EXPRESSION TAG	UNP P19836
A	-3	ARG	-	EXPRESSION TAG	UNP P19836
A	-2	GLY	-	EXPRESSION TAG	UNP P19836
A	-1	SER	-	EXPRESSION TAG	UNP P19836
A	0	HIS	-	EXPRESSION TAG	UNP P19836
B	-19	MET	-	EXPRESSION TAG	UNP P19836
B	-18	GLY	-	EXPRESSION TAG	UNP P19836
B	-17	SER	-	EXPRESSION TAG	UNP P19836
B	-16	SER	-	EXPRESSION TAG	UNP P19836
B	-15	HIS	-	EXPRESSION TAG	UNP P19836

*Continued on next page...*

Continued from previous page...

Chain	Residue	Modelled	Actual	Comment	Reference
B	-14	HIS	-	EXPRESSION TAG	UNP P19836
B	-13	HIS	-	EXPRESSION TAG	UNP P19836
B	-12	HIS	-	EXPRESSION TAG	UNP P19836
B	-11	HIS	-	EXPRESSION TAG	UNP P19836
B	-10	HIS	-	EXPRESSION TAG	UNP P19836
B	-9	SER	-	EXPRESSION TAG	UNP P19836
B	-8	SER	-	EXPRESSION TAG	UNP P19836
B	-7	GLY	-	EXPRESSION TAG	UNP P19836
B	-6	LEU	-	EXPRESSION TAG	UNP P19836
B	-5	VAL	-	EXPRESSION TAG	UNP P19836
B	-4	PRO	-	EXPRESSION TAG	UNP P19836
B	-3	ARG	-	EXPRESSION TAG	UNP P19836
B	-2	GLY	-	EXPRESSION TAG	UNP P19836
B	-1	SER	-	EXPRESSION TAG	UNP P19836
B	0	HIS	-	EXPRESSION TAG	UNP P19836

- Molecule 2 is [2-CYTIDYLATE-O'-PHOSPHONYLOXYL]-ETHYL-TRIMETHYL-AMMONIUM (three-letter code: CDC) (formula: C<sub>14</sub>H<sub>26</sub>N<sub>4</sub>O<sub>11</sub>P<sub>2</sub>).



Mol	Chain	Residues	Atoms					ZeroOcc	AltConf
2	A	1	Total	C	N	O	P	0	0
			31	14	4	11	2		
2	B	1	Total	C	N	O	P	0	0
			31	14	4	11	2		

- Molecule 3 is water.

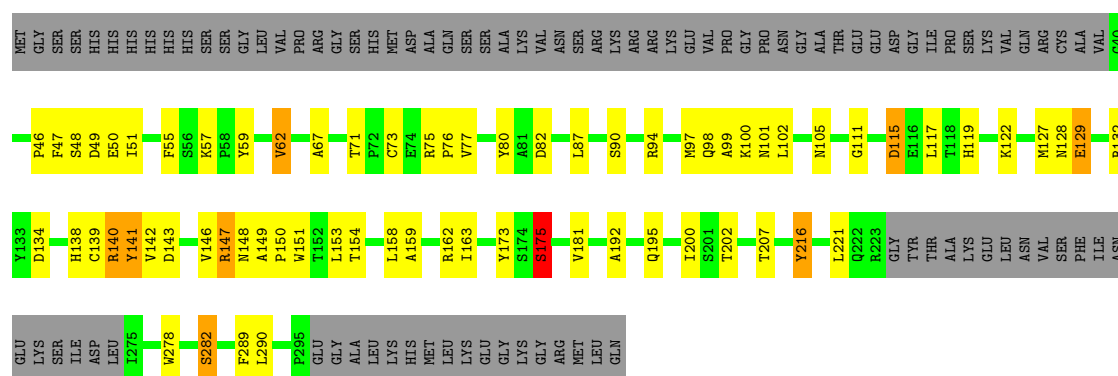
Mol	Chain	Residues	Atoms		ZeroOcc	AltConf
3	A	11	Total 11	O 11	0	0
3	B	8	Total 8	O 8	0	0

### 3 Residue-property plots

These plots are drawn for all protein, RNA and DNA chains in the entry. The first graphic for a chain summarises the proportions of errors displayed in the second graphic. The second graphic shows the sequence view annotated by issues in geometry and electron density. Residues are color-coded according to the number of geometric quality criteria for which they contain at least one outlier: green = 0, yellow = 1, orange = 2 and red = 3 or more. A red dot above a residue indicates a poor fit to the electron density ( $RSRZ > 2$ ). Stretches of 2 or more consecutive residues without any outlier are shown as a green connector. Residues present in the sample, but not in the model, are shown in grey.

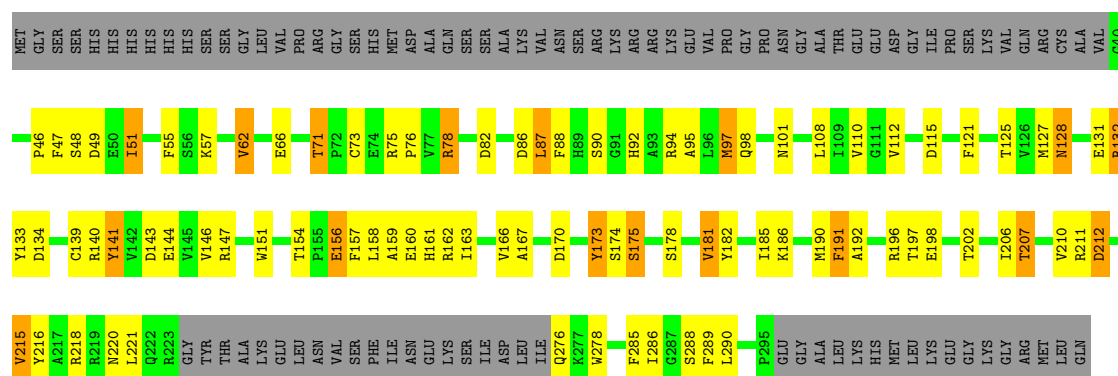
- Molecule 1: Choline-phosphate cytidyltransferase A

Chain A:



- Molecule 1: Choline-phosphate cytidyltransferase A

Chain B:



## 4 Data and refinement statistics

Property	Value	Source
Space group	P 1 21 1	Depositor
Cell constants a, b, c, $\alpha$ , $\beta$ , $\gamma$	87.26Å 44.55Å 97.13Å 90.00° 111.21° 90.00°	Depositor
Resolution (Å)	39.97 – 3.00 44.55 – 3.00	Depositor EDS
% Data completeness (in resolution range)	91.1 (39.97-3.00) 91.0 (44.55-3.00)	Depositor EDS
$R_{merge}$	0.14	Depositor
$R_{sym}$	(Not available)	Depositor
$\langle I/\sigma(I) \rangle$ <sup>1</sup>	2.98 (at 3.01Å)	Xtriage
Refinement program	PHENIX (phenix.refine: 1.7.1_743)	Depositor
R, $R_{free}$	0.223 , 0.288 0.222 , 0.285	Depositor DCC
$R_{free}$ test set	648 reflections (4.97%)	DCC
Wilson B-factor (Å <sup>2</sup> )	35.9	Xtriage
Anisotropy	1.125	Xtriage
Bulk solvent $k_{sol}$ (e/Å <sup>3</sup> ), $B_{sol}$ (Å <sup>2</sup> )	0.35 , 46.0	EDS
Estimated twinning fraction	No twinning to report.	Xtriage
L-test for twinning	$\langle  L  \rangle = 0.45$ , $\langle L^2 \rangle = 0.28$	Xtriage
Outliers	1 of 13085 reflections (0.008%)	Xtriage
$F_o, F_c$ correlation	0.90	EDS
Total number of atoms	3194	wwPDB-VP
Average B, all atoms (Å <sup>2</sup> )	39.0	wwPDB-VP

Xtriage's analysis on translational NCS is as follows: *The largest off-origin peak in the Patterson function is 19.23% of the height of the origin peak. No significant pseudotranslation is detected.*

<sup>1</sup>Intensities estimated from amplitudes.

## 5 Model quality ⓘ

### 5.1 Standard geometry ⓘ

Bond lengths and bond angles in the following residue types are not validated in this section: CDC

The Z score for a bond length (or angle) is the number of standard deviations the observed value is removed from the expected value. A bond length (or angle) with  $|Z| > 5$  is considered an outlier worth inspection. RMSZ is the root-mean-square of all Z scores of the bond lengths (or angles).

Mol	Chain	Bond lengths		Bond angles	
		RMSZ	$\# Z  > 5$	RMSZ	$\# Z  > 5$
1	A	0.27	0/1607	0.48	0/2193
1	B	0.27	0/1590	0.49	0/2171
All	All	0.27	0/3197	0.48	0/4364

Chiral center outliers are detected by calculating the chiral volume of a chiral center and verifying if the center is modelled as a planar moiety or with the opposite hand. A planarity outlier is detected by checking planarity of atoms in a peptide group, atoms in a mainchain group or atoms of a sidechain that are expected to be planar.

Mol	Chain	#Chirality outliers	#Planarity outliers
1	A	0	1

There are no bond length outliers.

There are no bond angle outliers.

There are no chirality outliers.

All (1) planarity outliers are listed below:

Mol	Chain	Res	Type	Group
1	A	175	SER	Peptide

### 5.2 Close contacts ⓘ

In the following table, the Non-H and H(model) columns list the number of non-hydrogen atoms and hydrogen atoms in the chain respectively. The H(added) column lists the number of hydrogens added by MolProbity. The Clashes column lists the number of clashes within the asymmetric unit, and the number in parentheses is this value normalized per 1000 atoms of the molecule in the chain. The Symm-Clashes column gives symmetry related clashes, in the same way as for the Clashes column.



Mol	Chain	Non-H	H(model)	H(added)	Clashes	Symm-Clashes
1	A	1565	0	1419	69	0
1	B	1548	0	1404	69	0
2	A	31	0	25	4	0
2	B	31	0	25	7	0
3	A	11	0	0	0	0
3	B	8	0	0	0	0
All	All	3194	0	2873	132	0

Clashscore is defined as the number of clashes calculated for the entry per 1000 atoms (including hydrogens) of the entry. The overall clashscore for this entry is 22.

All (132) close contacts within the same asymmetric unit are listed below.

Atom-1	Atom-2	Distance(Å)	Clash(Å)
1:A:46:PRO:HB3	1:A:51:ILE:HD11	1.39	1.02
1:A:46:PRO:CB	1:A:51:ILE:HD11	2.07	0.85
1:A:134:ASP:OD1	1:B:94:ARG:NH2	2.10	0.81
1:A:97:MET:O	1:A:101:ASN:ND2	2.16	0.79
1:A:115:ASP:O	1:A:119:HIS:ND1	2.15	0.77
1:B:87:LEU:HB2	1:B:202:THR:HG23	1.66	0.76
1:A:75:ARG:NH1	1:A:76:PRO:O	2.18	0.76
1:B:71:THR:HB	1:B:75:ARG:O	1.86	0.75
1:A:99:ALA:HA	1:A:102:LEU:HD13	1.68	0.74
1:A:71:THR:HB	1:A:75:ARG:O	1.88	0.74
1:A:134:ASP:OD2	1:B:90:SER:HB3	1.87	0.73
1:B:48:SER:HB3	1:B:146:VAL:HG22	1.69	0.73
1:B:75:ARG:NH1	1:B:76:PRO:O	2.24	0.70
1:A:140:ARG:NH2	1:B:139:CYS:O	2.25	0.69
1:B:46:PRO:HD2	1:B:143:ASP:O	1.92	0.69
1:A:216:TYR:OH	1:B:288:SER:HB2	1.92	0.68
1:B:216:TYR:O	1:B:220:ASN:ND2	2.27	0.67
1:B:78:ARG:NH2	1:B:161:HIS:O	2.26	0.67
1:A:159:ALA:O	1:A:162:ARG:NH2	2.24	0.66
1:B:128:ASN:N	1:B:131:GLU:OE1	2.18	0.66
1:A:49:ASP:OD1	1:A:147:ARG:NH1	2.23	0.65
1:B:159:ALA:O	1:B:162:ARG:NH1	2.30	0.64
1:A:151:TRP:HE1	1:A:175:SER:HG	0.64	0.64
1:A:51:ILE:HD12	1:A:51:ILE:N	2.13	0.64
1:B:156:GLU:OE1	1:B:157:PHE:N	2.30	0.64
1:B:186:LYS:HG3	1:B:191:PHE:HD2	1.63	0.63
1:B:87:LEU:H	1:B:127:MET:HG3	1.62	0.63
1:A:289:PHE:HD1	1:B:216:TYR:CD2	2.17	0.63
1:B:108:LEU:N	1:B:143:ASP:OD2	2.24	0.63
1:B:154:THR:O	1:B:158:LEU:HG	1.99	0.63

*Continued on next page...*

*Continued from previous page...*

Atom-1	Atom-2	Distance(Å)	Clash(Å)
1:A:151:TRP:HE1	1:A:175:SER:CB	2.12	0.62
1:A:158:LEU:HA	1:A:163:ILE:HD12	1.80	0.62
1:A:94:ARG:O	1:A:98:GLN:HG3	1.97	0.62
1:A:102:LEU:HD21	1:A:192:ALA:HB1	1.81	0.62
1:B:156:GLU:N	1:B:156:GLU:OE1	2.33	0.61
1:A:128:ASN:O	1:A:132:ARG:HG3	2.00	0.61
1:A:115:ASP:N	1:A:129:GLU:OE2	2.31	0.61
1:A:98:GLN:NE2	1:A:195:GLN:O	2.34	0.61
1:A:50:GLU:HB2	1:A:51:ILE:HD12	1.83	0.60
1:A:47:PHE:O	1:A:51:ILE:HD13	2.02	0.60
1:A:154:THR:O	1:A:158:LEU:HG	2.03	0.59
1:B:197:THR:HG22	1:B:198:GLU:N	2.18	0.59
1:A:122:LYS:NZ	2:A:401:CDC:O3B	2.38	0.57
1:A:278:TRP:O	1:A:282:SER:N	2.37	0.56
1:B:75:ARG:O	1:B:75:ARG:HG3	2.05	0.56
1:A:87:LEU:H	1:A:127:MET:HE2	1.71	0.56
1:A:115:ASP:OD2	1:A:129:GLU:N	2.39	0.56
1:A:46:PRO:HD2	1:A:143:ASP:O	2.06	0.55
1:A:216:TYR:OH	1:B:285:PHE:O	2.16	0.55
1:A:97:MET:HB2	1:A:141:TYR:CE2	2.41	0.55
1:B:167:ALA:HA	1:B:192:ALA:O	2.07	0.55
1:B:151:TRP:HE1	1:B:175:SER:HB3	1.71	0.54
1:A:59:TYR:HE1	1:A:162:ARG:HA	1.72	0.54
1:A:134:ASP:OD2	1:A:138:HIS:HE1	1.91	0.54
1:A:59:TYR:HD1	1:A:162:ARG:HD2	1.73	0.54
1:A:59:TYR:CE1	1:A:162:ARG:HA	2.42	0.54
1:A:80:TYR:OH	1:A:111:GLY:HA3	2.07	0.54
1:A:75:ARG:HG3	1:A:75:ARG:O	2.08	0.53
1:A:98:GLN:O	1:A:102:LEU:HD12	2.09	0.53
1:B:210:VAL:HG11	1:B:286:ILE:HG23	1.91	0.53
1:B:197:THR:HG22	1:B:198:GLU:H	1.73	0.53
1:A:221:LEU:HD12	1:A:278:TRP:HZ3	1.73	0.53
1:A:102:LEU:HD21	1:A:192:ALA:CB	2.40	0.52
1:B:196:ARG:HA	2:B:401:CDC:O2	2.10	0.52
1:B:121:PHE:O	1:B:175:SER:OG	2.29	0.51
1:B:156:GLU:O	1:B:160:GLU:HG2	2.11	0.51
1:A:76:PRO:HB3	1:A:105:ASN:OD1	2.11	0.50
1:A:151:TRP:O	2:A:401:CDC:H171	2.11	0.50
1:A:62:VAL:HG22	1:A:75:ARG:HH22	1.76	0.50
1:A:142:VAL:O	1:B:140:ARG:NH2	2.38	0.50
1:B:166:VAL:HG21	1:B:185:ILE:HG21	1.92	0.50
1:B:207:THR:OG1	1:B:290:LEU:HD21	2.11	0.50

*Continued on next page...*

*Continued from previous page...*

Atom-1	Atom-2	Distance(Å)	Clash(Å)
1:B:158:LEU:HD13	1:B:190:MET:HE1	1.93	0.50
1:B:218:ARG:HG3	1:B:278:TRP:CE3	2.47	0.50
1:A:134:ASP:OD2	1:A:138:HIS:CE1	2.65	0.49
1:A:67:ALA:HB1	1:A:77:VAL:HG21	1.95	0.49
1:A:216:TYR:CE2	1:B:289:PHE:HB2	2.47	0.49
1:B:278:TRP:O	1:B:278:TRP:HD1	1.96	0.48
1:A:115:ASP:OD2	1:A:129:GLU:HG2	2.14	0.48
1:B:154:THR:HB	1:B:156:GLU:OE1	2.13	0.48
1:A:80:TYR:CE2	1:A:82:ASP:HB3	2.49	0.48
1:A:51:ILE:CD1	1:A:51:ILE:N	2.77	0.47
1:A:82:ASP:N	1:A:82:ASP:OD1	2.48	0.47
1:B:92:HIS:O	1:B:95:ALA:HB3	2.15	0.47
1:B:221:LEU:HD12	1:B:278:TRP:HZ3	1.80	0.47
1:A:200:ILE:O	2:A:401:CDC:N4	2.48	0.47
1:B:212:ASP:N	1:B:212:ASP:OD1	2.45	0.46
1:B:173:TYR:O	1:B:181:VAL:HG13	2.14	0.46
1:B:182:TYR:OH	2:B:401:CDC:H163	2.15	0.46
1:B:174:SER:O	1:B:174:SER:OG	2.34	0.46
1:A:82:ASP:HA	1:A:111:GLY:O	2.15	0.45
1:A:99:ALA:HA	1:A:102:LEU:CD1	2.43	0.45
1:A:159:ALA:O	1:A:162:ARG:HD3	2.16	0.45
1:B:49:ASP:OD2	1:B:147:ARG:NH2	2.50	0.45
1:B:173:TYR:CE1	2:B:401:CDC:H162	2.52	0.45
1:B:94:ARG:O	1:B:98:GLN:HG3	2.16	0.44
1:B:221:LEU:HA	1:B:221:LEU:HD23	1.82	0.44
1:B:62:VAL:HG22	1:B:66:GLU:HG2	1.98	0.44
1:A:59:TYR:HD1	1:A:162:ARG:CD	2.30	0.44
1:B:112:VAL:HB	1:B:133:TYR:CE1	2.53	0.44
1:B:202:THR:O	1:B:206:ILE:HG12	2.17	0.44
1:A:87:LEU:HB2	1:A:202:THR:HG23	2.00	0.44
1:B:86:ASP:HB3	1:B:202:THR:HG21	2.01	0.43
1:A:100:LYS:NZ	1:A:141:TYR:O	2.50	0.43
1:A:200:ILE:HD12	1:A:200:ILE:HA	1.88	0.43
1:B:211:ARG:O	1:B:215:VAL:HG13	2.18	0.43
1:B:82:ASP:OD2	2:B:401:CDC:H151	2.19	0.43
1:B:47:PHE:O	1:B:51:ILE:HG23	2.18	0.42
1:A:94:ARG:HH11	1:A:97:MET:HE1	1.85	0.42
1:A:173:TYR:O	1:A:181:VAL:HG13	2.18	0.42
1:B:87:LEU:O	1:B:88:PHE:C	2.58	0.42
1:B:55:PHE:C	1:B:57:LYS:N	2.71	0.42
1:A:117:LEU:HD12	1:A:117:LEU:HA	1.92	0.42
1:B:82:ASP:OD2	2:B:401:CDC:H172	2.20	0.42

*Continued on next page...*

Continued from previous page...

Atom-1	Atom-2	Distance(Å)	Clash(Å)
1:B:125:THR:HG21	1:B:132:ARG:NH2	2.34	0.42
1:A:55:PHE:C	1:A:57:LYS:N	2.73	0.42
1:B:62:VAL:HG22	1:B:66:GLU:CG	2.49	0.41
1:A:149:ALA:HB1	1:A:150:PRO:HD2	2.02	0.41
1:B:276:GLN:C	1:B:278:TRP:H	2.22	0.41
1:B:97:MET:HG3	1:B:141:TYR:CE1	2.56	0.41
1:B:62:VAL:HB	1:B:75:ARG:NH2	2.35	0.41
1:B:158:LEU:HA	1:B:163:ILE:HD12	2.03	0.41
1:A:48:SER:HB3	1:A:146:VAL:HG22	2.01	0.41
1:A:62:VAL:HG21	1:A:77:VAL:HG22	2.03	0.41
1:A:139:CYS:HB3	1:A:142:VAL:CG2	2.50	0.41
1:B:173:TYR:CD1	2:B:401:CDC:H162	2.56	0.40
1:B:82:ASP:N	1:B:82:ASP:OD1	2.55	0.40
1:B:112:VAL:HB	1:B:133:TYR:HE1	1.85	0.40
1:B:97:MET:O	1:B:101:ASN:ND2	2.29	0.40
1:B:128:ASN:O	1:B:131:GLU:N	2.53	0.40
2:A:401:CDC:H141	2:A:401:CDC:H162	1.71	0.40
2:B:401:CDC:H162	2:B:401:CDC:H141	1.64	0.40

There are no symmetry-related clashes.

## 5.3 Torsion angles

### 5.3.1 Protein backbone ⓘ

In the following table, the Percentiles column shows the percent Ramachandran outliers of the chain as a percentile score with respect to all X-ray entries followed by that with respect to entries of similar resolution. The Analysed column shows the number of residues for which the backbone conformation was analysed, and the total number of residues.

Mol	Chain	Analysed	Favoured	Allowed	Outliers	Percentiles	
1	A	201/300 (67%)	199 (99%)	2 (1%)	0	100	100
1	B	200/300 (67%)	186 (93%)	14 (7%)	0	100	100
All	All	401/600 (67%)	385 (96%)	16 (4%)	0	100	100

There are no Ramachandran outliers to report.

### 5.3.2 Protein sidechains ⓘ

In the following table, the Percentiles column shows the percent sidechain outliers of the chain as a percentile score with respect to all X-ray entries followed by that with respect to entries of similar resolution. The Analysed column shows the number of residues for which the sidechain conformation was analysed, and the total number of residues.

Mol	Chain	Analysed	Rotameric	Outliers	Percentiles	
1	A	157/259 (61%)	142 (90%)	15 (10%)	12	43
1	B	153/259 (59%)	129 (84%)	24 (16%)	4	18
All	All	310/518 (60%)	271 (87%)	39 (13%)	7	27

All (39) residues with a non-rotameric sidechain are listed below:

Mol	Chain	Res	Type
1	A	62	VAL
1	A	73	CYS
1	A	90	SER
1	A	115	ASP
1	A	129	GLU
1	A	140	ARG
1	A	141	TYR
1	A	147	ARG
1	A	148	ASN
1	A	153	LEU
1	A	175	SER
1	A	207	THR
1	A	216	TYR
1	A	282	SER
1	A	290	LEU
1	B	51	ILE
1	B	62	VAL
1	B	71	THR
1	B	73	CYS
1	B	78	ARG
1	B	87	LEU
1	B	97	MET
1	B	110	VAL
1	B	115	ASP
1	B	128	ASN
1	B	132	ARG
1	B	134	ASP
1	B	141	TYR
1	B	144	GLU

*Continued on next page...*

*Continued from previous page...*

Mol	Chain	Res	Type
1	B	156	GLU
1	B	170	ASP
1	B	173	TYR
1	B	175	SER
1	B	178	SER
1	B	181	VAL
1	B	191	PHE
1	B	207	THR
1	B	212	ASP
1	B	215	VAL

Some sidechains can be flipped to improve hydrogen bonding and reduce clashes. All (1) such sidechains are listed below:

Mol	Chain	Res	Type
1	A	138	HIS

### 5.3.3 RNA ⓘ

There are no RNA chains in this entry.

## 5.4 Non-standard residues in protein, DNA, RNA chains ⓘ

There are no non-standard protein/DNA/RNA residues in this entry.

## 5.5 Carbohydrates ⓘ

There are no carbohydrates in this entry.

## 5.6 Ligand geometry ⓘ

2 ligands are modelled in this entry.

In the following table, the Counts columns list the number of bonds (or angles) for which Mogul statistics could be retrieved, the number of bonds (or angles) that are observed in the model and the number of bonds (or angles) that are defined in the chemical component dictionary. The Link column lists molecule types, if any, to which the group is linked. The Z score for a bond length (or angle) is the number of standard deviations the observed value is removed from the expected value. A bond length (or angle) with  $|Z| > 2$  is considered an outlier worth inspection. RMSZ is the root-mean-square of all Z scores of the bond lengths (or angles).

Mol	Type	Chain	Res	Link	Bond lengths			Bond angles		
					Counts	RMSZ	# Z  > 2	Counts	RMSZ	# Z  > 2
2	CDC	A	401	-	32,32,32	1.48	2 (6%)	46,49,49	1.06	3 (6%)
2	CDC	B	401	-	32,32,32	1.44	2 (6%)	46,49,49	1.19	4 (8%)

In the following table, the Chirals column lists the number of chiral outliers, the number of chiral centers analysed, the number of these observed in the model and the number defined in the chemical component dictionary. Similar counts are reported in the Torsion and Rings columns. '-' means no outliers of that kind were identified.

Mol	Type	Chain	Res	Link	Chirals	Torsions	Rings
2	CDC	A	401	-	-	0/22/40/40	0/2/2/2
2	CDC	B	401	-	-	0/22/40/40	0/2/2/2

All (4) bond length outliers are listed below:

Mol	Chain	Res	Type	Atoms	Z	Observed(Å)	Ideal(Å)
2	A	401	CDC	O2-C2	6.35	1.36	1.23
2	B	401	CDC	O2-C2	6.27	1.36	1.23
2	A	401	CDC	C2-N1	-3.61	1.34	1.38
2	B	401	CDC	C2-N1	-3.25	1.34	1.38

All (7) bond angle outliers are listed below:

Mol	Chain	Res	Type	Atoms	Z	Observed(°)	Ideal(°)
2	B	401	CDC	C6-C5-C4	3.63	118.98	117.47
2	B	401	CDC	C2-N3-C4	3.44	120.55	115.57
2	A	401	CDC	C2-N3-C4	3.21	120.22	115.57
2	A	401	CDC	C6-C5-C4	2.87	118.66	117.47
2	B	401	CDC	PB-O3A-PA	-2.66	121.53	132.95
2	A	401	CDC	PB-O3A-PA	-2.36	122.83	132.95
2	B	401	CDC	C3'-C2'-C1'	2.15	104.27	100.91

There are no chirality outliers.

There are no torsion outliers.

There are no ring outliers.

## 5.7 Other polymers ⓘ

There are no such residues in this entry.

## 5.8 Polymer linkage issues

There are no chain breaks in this entry.



## 6 Fit of model and data

### 6.1 Protein, DNA and RNA chains

In the following table, the column labelled ‘#RSRZ> 2’ contains the number (and percentage) of RSRZ outliers, followed by percent RSRZ outliers for the chain as percentile scores relative to all X-ray entries and entries of similar resolution. The OWAB column contains the minimum, median, 95<sup>th</sup> percentile and maximum values of the occupancy-weighted average B-factor per residue. The column labelled ‘Q< 0.9’ lists the number of (and percentage) of residues with an average occupancy less than 0.9.

Mol	Chain	Analysed	<RSRZ>	#RSRZ>2	OWAB(Å <sup>2</sup> )	Q<0.9
1	A	205/300 (68%)	-0.19	0 100 100	14, 36, 75, 88	0
1	B	204/300 (68%)	-0.24	0 100 100	14, 36, 75, 90	1 (0%)
All	All	409/600 (68%)	-0.21	0 88 100	14, 36, 75, 90	1 (0%)

There are no RSRZ outliers to report.

### 6.2 Non-standard residues in protein, DNA, RNA chains

There are no non-standard protein/DNA/RNA residues in this entry.

### 6.3 Carbohydrates

There are no carbohydrates in this entry.

### 6.4 Ligands

In the following table, the Atoms column lists the number of modelled atoms in the group and the number defined in the chemical component dictionary. LLDF column lists the quality of electron density of the group with respect to its neighbouring residues in protein, DNA or RNA chains. The B-factors column lists the minimum, median, 95<sup>th</sup> percentile and maximum values of B factors of atoms in the group. The column labelled ‘Q< 0.9’ lists the number of atoms with occupancy less than 0.9.

Mol	Type	Chain	Res	Atoms	RSR	LLDF	B-factors(Å <sup>2</sup> )	Q<0.9
2	CDC	B	401	31/31	0.17	-0.33	15,33,46,49	0
2	CDC	A	401	31/31	0.15	-0.90	20,30,47,52	0

## 6.5 Other polymers ⓘ

There are no such residues in this entry.