



Full wwPDB X-ray Structure Validation Report ⓘ

Apr 22, 2014 – 12:53 PM EDT

PDB ID : 4MVX
Title : Trypanosoma brucei methionyl-tRNA synthetase in complex with inhibitor 1
-{3-[(3,5-dichlorobenzyl)amino]propyl}-3-phenylurea(Chem 1356)
Authors : Koh, C.Y.; Kim, J.E.; Wetzel, A.B.; de van der Schueren, W.J.; Shibata, S.;
Liu, J.; Zhang, Z.; Fan, E.; Verlinde, C.L.M.J.; Hol, W.G.J.
Deposited on : 2013-09-24
Resolution : 2.55 Å(reported)

This is a full wwPDB validation report for a publicly released PDB entry.
We welcome your comments at validation@mail.wwpdb.org
A user guide is available at <http://wwpdb.org/ValidationPDFNotes.html>

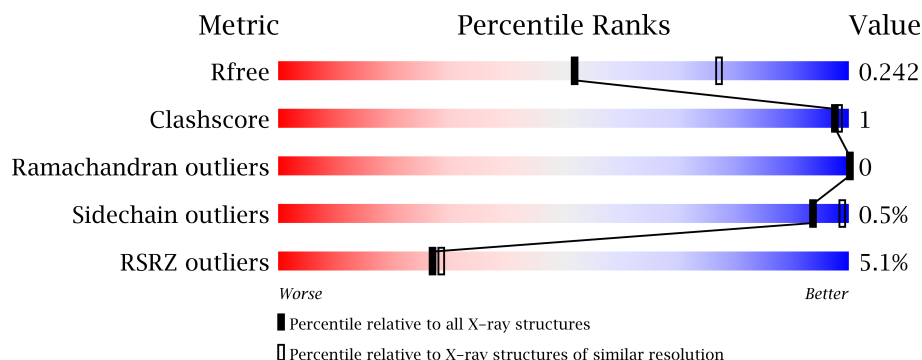
The following versions of software and data (see [references](#)) were used in the production of this report:

MolProbity : 4.02b-467
Mogul : 1.16 November 2013
Xtriage (Phenix) : dev-1439
EDS : stable22978
Percentile statistics : 21963
Refmac : 5.8.0049
CCP4 : 6.3.0 (Settle)
Ideal geometry (proteins) : Engh & Huber (2001)
Ideal geometry (DNA, RNA) : Parkinson et. al. (1996)
Validation Pipeline (wwPDB-VP) : stable22978

1 Overall quality at a glance



The reported resolution of this entry is 2.55 Å.

Percentile scores (ranging between 0-100) for global validation metrics of the entry are shown in the following graphic. The table shows the number of entries on which the scores are based.



Metric	Whole archive (#Entries)	Similar resolution (#Entries, resolution range(Å))
R_{free}	66092	3413 (2.58-2.50)
Clashscore	79885	4284 (2.58-2.50)
Ramachandran outliers	78287	4193 (2.58-2.50)
Sidechain outliers	78261	4195 (2.58-2.50)
RSRZ outliers	66119	3414 (2.58-2.50)

The table below summarises the geometric issues observed across the polymeric chains and their fit to the electron density. The red, orange, yellow and green segments on the lower bar indicate the fraction of residues that contain outliers for ≥ 3 , 2, 1 and 0 types of geometric quality criteria. The upper red bar (where present) indicates the fraction of residues that have poor fit to the electron density.

Mol	Chain	Length	Quality of chain
1	A	542	
1	B	542	

The following table lists non-polymeric compounds that are outliers for geometric or electron-density-fit criteria:

Mol	Type	Chain	Res	Geometry	Electron density
2	GOL	A	801	-	X
2	GOL	A	803	-	X
2	GOL	B	801	-	X
2	GOL	B	802	-	X
2	GOL	B	803	-	X
2	GOL	B	804	-	X

Continued on next page...

Continued from previous page...

Mol	Type	Chain	Res	Geometry	Electron density
2	GOL	B	806	-	X
3	DMS	A	804	-	X
3	DMS	A	806	-	X
3	DMS	B	808	-	X
5	C13	B	809	-	X

2 Entry composition

There are 6 unique types of molecules in this entry. The entry contains 9075 atoms, of which 0 are hydrogen and 0 are deuterium.

In the tables below, the ZeroOcc column contains the number of atoms modelled with zero occupancy, the AltConf column contains the number of residues with at least one atom in alternate conformation and the Trace column contains the number of residues modelled with at most 2 atoms.

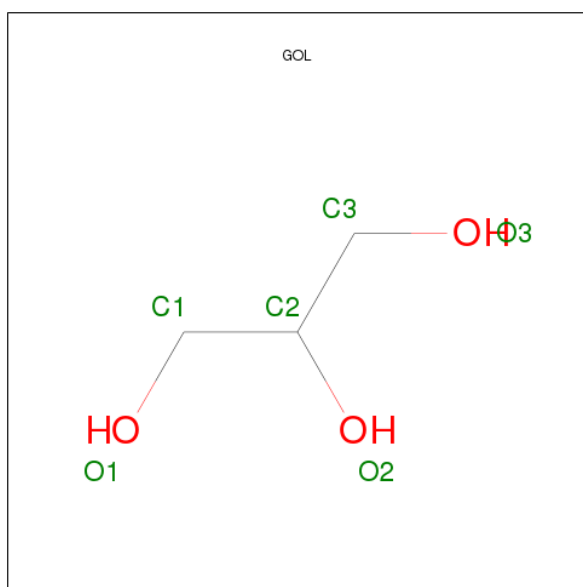
- Molecule 1 is a protein called Methionyl-tRNA synthetase.

Mol	Chain	Residues	Atoms						ZeroOcc	AltConf	Trace
1	A	531	Total	As	C	N	O	S	0	4	0
			4287	2	2761	724	789	11			
1	B	533	Total	As	C	N	O	S	0	2	0
			4269	2	2751	722	782	12			

There are 22 discrepancies between the modelled and reference sequences:

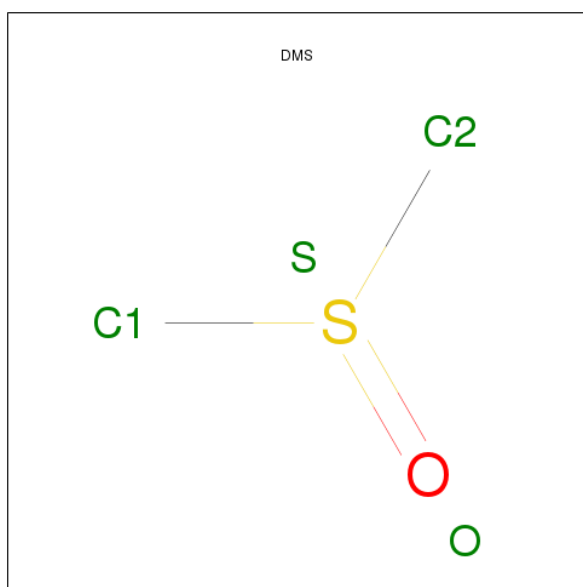
Chain	Residue	Modelled	Actual	Comment	Reference
A	-4	GLY	-	EXPRESSION TAG	UNP Q38C91
A	-3	PRO	-	EXPRESSION TAG	UNP Q38C91
A	-2	GLY	-	EXPRESSION TAG	UNP Q38C91
A	-1	SER	-	EXPRESSION TAG	UNP Q38C91
A	0	MET	-	EXPRESSION TAG	UNP Q38C91
A	309	THR	ALA	CONFLICT	UNP Q38C91
A	452	ALA	LYS	ENGINEERED MUTATION	UNP Q38C91
A	453	ARG	LYS	ENGINEERED MUTATION	UNP Q38C91
A	454	ALA	GLU	ENGINEERED MUTATION	UNP Q38C91
A	499	VAL	ALA	CONFLICT	UNP Q38C91
A	503	ASN	SER	CONFLICT	UNP Q38C91
B	-4	GLY	-	EXPRESSION TAG	UNP Q38C91
B	-3	PRO	-	EXPRESSION TAG	UNP Q38C91
B	-2	GLY	-	EXPRESSION TAG	UNP Q38C91
B	-1	SER	-	EXPRESSION TAG	UNP Q38C91
B	0	MET	-	EXPRESSION TAG	UNP Q38C91
B	309	THR	ALA	CONFLICT	UNP Q38C91
B	452	ALA	LYS	ENGINEERED MUTATION	UNP Q38C91
B	453	ARG	LYS	ENGINEERED MUTATION	UNP Q38C91
B	454	ALA	GLU	ENGINEERED MUTATION	UNP Q38C91
B	499	VAL	ALA	CONFLICT	UNP Q38C91
B	503	ASN	SER	CONFLICT	UNP Q38C91

- Molecule 2 is GLYCEROL (three-letter code: GOL) (formula: C₃H₈O₃).



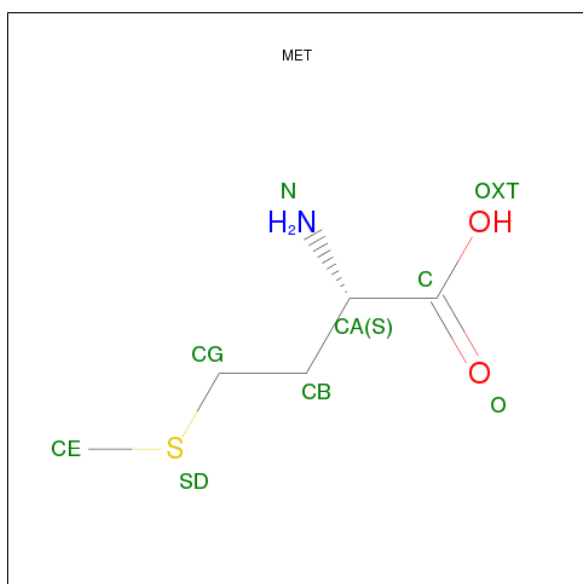
Mol	Chain	Residues	Atoms			ZeroOcc	AltConf
2	A	1	Total	C	O	0	0
			6	3	3		
2	A	1	Total	C	O	0	0
			6	3	3		
2	A	1	Total	C	O	0	0
			6	3	3		
2	B	1	Total	C	O	0	0
			6	3	3		
2	B	1	Total	C	O	0	0
			6	3	3		
2	B	1	Total	C	O	0	0
			6	3	3		
2	B	1	Total	C	O	0	0
			6	3	3		
2	B	1	Total	C	O	0	0
			6	3	3		

- Molecule 3 is DIMETHYL SULFOXIDE (three-letter code: DMS) (formula: C₂H₆OS).



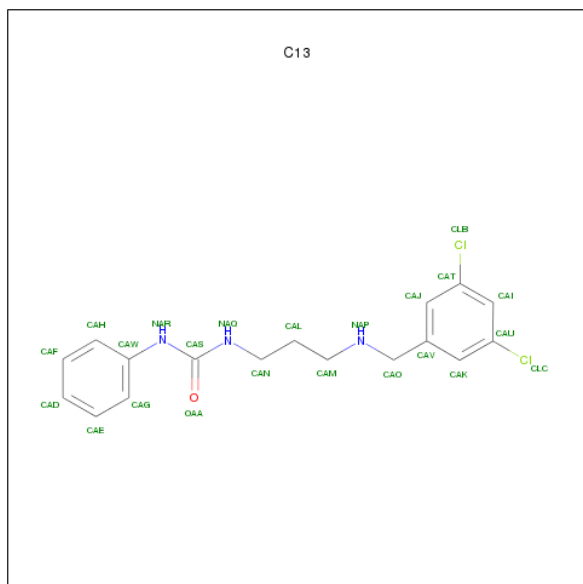
Mol	Chain	Residues	Atoms				ZeroOcc	AltConf
3	A	1	Total	C	O	S	0	0
			4	2	1	1		
3	A	1	Total	C	O	S	0	0
			4	2	1	1		
3	A	1	Total	C	O	S	0	0
			4	2	1	1		
3	B	1	Total	C	O	S	0	0
			4	2	1	1		
3	B	1	Total	C	O	S	0	0
			4	2	1	1		

- Molecule 4 is METHIONINE (three-letter code: MET) (formula: C₅H₁₁NO₂S).



Mol	Chain	Residues	Atoms					ZeroOcc	AltConf
4	A	1	Total	C	N	O	S	0	0
			9	5	1	2	1		

- Molecule 5 is 1-{3-[(3,5-DICHLOROBENZYL)AMINO]PROPYL}-3-PHENYLUREA (three-letter code: C13) (formula: $C_{17}H_{19}Cl_2N_3O$).



Mol	Chain	Residues	Atoms					ZeroOcc	AltConf
5	B	1	Total	C	Cl	N	O	0	0
			23	17	2	3	1		

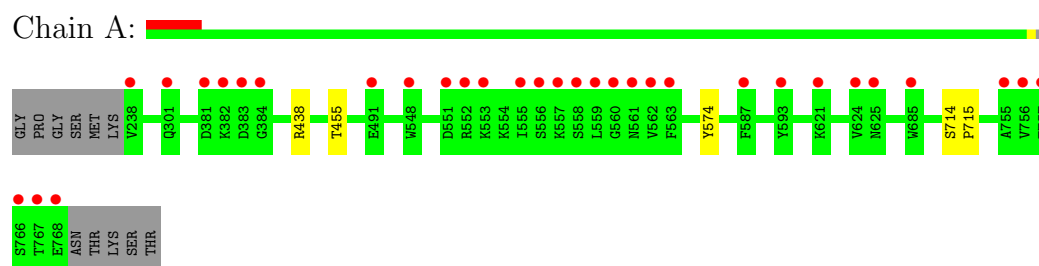
- Molecule 6 is water.

Mol	Chain	Residues	Atoms	ZeroOcc	AltConf
6	A	204	Total O 204 204	0	0
6	B	209	Total O 209 209	0	0

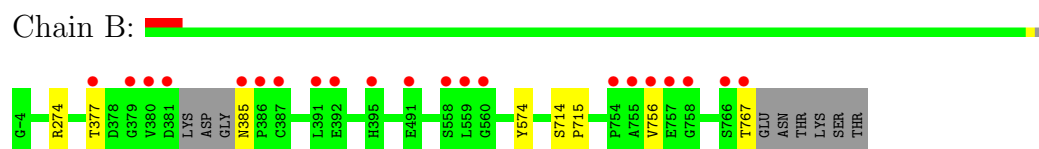
3 Residue-property plots

These plots are drawn for all protein, RNA and DNA chains in the entry. The first graphic for a chain summarises the proportions of errors displayed in the second graphic. The second graphic shows the sequence view annotated by issues in geometry and electron density. Residues are color-coded according to the number of geometric quality criteria for which they contain at least one outlier: green = 0, yellow = 1, orange = 2 and red = 3 or more. A red dot above a residue indicates a poor fit to the electron density ($RSRZ > 2$). Stretches of 2 or more consecutive residues without any outlier are shown as a green connector. Residues present in the sample, but not in the model, are shown in grey.

- Molecule 1: Methionyl-tRNA synthetase



- Molecule 1: Methionyl-tRNA synthetase



4 Data and refinement statistics

Property	Value	Source
Space group	P 21 21 21	Depositor
Cell constants a, b, c, α , β , γ	88.06Å 105.96Å 206.67Å 90.00° 90.00° 90.00°	Depositor
Resolution (Å)	30.00 – 2.55 48.29 – 2.55	Depositor EDS
% Data completeness (in resolution range)	98.0 (30.00-2.55) 98.0 (48.29-2.55)	Depositor EDS
R_{merge}	0.14	Depositor
R_{sym}	0.14	Depositor
$\langle I/\sigma(I) \rangle$ ¹	2.57 (at 2.54Å)	Xtriage
Refinement program	REFMAC 5.7.0032	Depositor
R, R_{free}	0.199 , 0.244 0.203 , 0.242	Depositor DCC
R_{free} test set	3189 reflections (5.36%)	DCC
Wilson B-factor (Å ²)	33.1	Xtriage
Anisotropy	0.776	Xtriage
Bulk solvent k_{sol} (e/Å ³), B_{sol} (Å ²)	0.36 , 20.8	EDS
Estimated twinning fraction	No twinning to report.	Xtriage
L-test for twinning	$\langle L \rangle = 0.49$, $\langle L^2 \rangle = 0.32$	Xtriage
Outliers	0 of 62865 reflections	Xtriage
F_o, F_c correlation	0.94	EDS
Total number of atoms	9075	wwPDB-VP
Average B, all atoms (Å ²)	37.0	wwPDB-VP

Xtriage's analysis on translational NCS is as follows: *The largest off-origin peak in the Patterson function is 3.18% of the height of the origin peak. No significant pseudotranslation is detected.*

¹Intensities estimated from amplitudes.

5 Model quality

5.1 Standard geometry

Bond lengths and bond angles in the following residue types are not validated in this section: CAS, GOL, C13, DMS

The Z score for a bond length (or angle) is the number of standard deviations the observed value is removed from the expected value. A bond length (or angle) with $|Z| > 5$ is considered an outlier worth inspection. RMSZ is the root-mean-square of all Z scores of the bond lengths (or angles).

Mol	Chain	Bond lengths		Bond angles	
		RMSZ	# Z >5	RMSZ	# Z >5
1	A	0.35	0/4388	0.55	0/5961
1	B	0.36	0/4366	0.57	0/5930
All	All	0.36	0/8754	0.56	0/11891

There are no bond length outliers.

There are no bond angle outliers.

There are no chirality outliers.

There are no planarity outliers.

5.2 Close contacts

In the following table, the Non-H and H(model) columns list the number of non-hydrogen atoms and hydrogen atoms in the chain respectively. The H(added) column lists the number of hydrogens added by MolProbity. The Clashes column lists the number of clashes within the asymmetric unit, and the number in parentheses is this value normalized per 1000 atoms of the molecule in the chain. The Symm-Clashes column gives symmetry related clashes, in the same way as for the Clashes column.

Mol	Chain	Non-H	H(model)	H(added)	Clashes	Symm-Clashes
1	A	4287	0	0	4	0
1	B	4269	0	0	3	0
2	A	18	0	24	1	0
2	B	36	0	48	1	0
3	A	12	0	18	0	0
3	B	8	0	12	0	0
4	A	9	0	8	0	0
5	B	23	0	19	0	0
6	A	204	0	0	1	0
6	B	209	0	0	1	0

Continued on next page...

Continued from previous page...

Mol	Chain	Non-H	H(model)	H(added)	Clashes	Symm-Clashes
All	All	9075	0	129	7	0

Clashscore is defined as the number of clashes calculated for the entry per 1000 atoms (including hydrogens) of the entry. The overall clashscore for this entry is 1.

All (7) close contacts within the same asymmetric unit are listed below.

Atom-1	Atom-2	Distance(Å)	Clash(Å)
1:A:765[B]:ARG:CG	1:A:765[B]:ARG:NH1	2.59	0.64
1:B:274:ARG:NH2	6:B:939:HOH:O	2.38	0.56
1:B:714:SER:N	1:B:715:PRO:CD	2.78	0.46
1:A:714:SER:N	1:A:715:PRO:CD	2.80	0.44
1:A:438:ARG:NH1	6:A:913:HOH:O	2.51	0.42
1:A:574:TYR:N	2:A:802:GOL:H2	2.34	0.42
1:B:574:TYR:N	2:B:804:GOL:H12	2.37	0.40

There are no symmetry-related clashes.

5.3 Torsion angles

5.3.1 Protein backbone ⓘ

In the following table, the Percentiles column shows the percent Ramachandran outliers of the chain as a percentile score with respect to all X-ray entries followed by that with respect to entries of similar resolution. The Analysed column shows the number of residues for which the backbone conformation was analysed, and the total number of residues.

Mol	Chain	Analysed	Favoured	Allowed	Outliers	Percentiles	
1	A	531/542 (98%)	521 (98%)	10 (2%)	0	100	100
1	B	529/542 (98%)	515 (97%)	14 (3%)	0	100	100
All	All	1060/1084 (98%)	1036 (98%)	24 (2%)	0	100	100

There are no Ramachandran outliers to report.

5.3.2 Protein sidechains ⓘ

In the following table, the Percentiles column shows the percent sidechain outliers of the chain as a percentile score with respect to all X-ray entries followed by that with respect to entries of similar resolution. The Analysed column shows the number of residues for which the sidechain conformation was analysed, and the total number of residues.

Mol	Chain	Analysed	Rotameric	Outliers	Percentiles	
1	A	461/467 (99%)	460 (100%)	1 (0%)	96	99
1	B	458/467 (98%)	454 (99%)	4 (1%)	87	97
All	All	919/934 (98%)	914 (100%)	5 (0%)	94	99

All (5) residues with a non-rotameric sidechain are listed below:

Mol	Chain	Res	Type
1	A	455	THR
1	B	377	THR
1	B	385	ASN
1	B	756	VAL
1	B	767	THR

Some sidechains can be flipped to improve hydrogen bonding and reduce clashes. There are no such sidechains identified.

5.3.3 RNA ⓘ

There are no RNA chains in this entry.

5.4 Non-standard residues in protein, DNA, RNA chains ⓘ

4 non-standard protein/DNA/RNA residues are modelled in this entry.

In the following table, the Counts columns list the number of bonds (or angles) for which Mogul statistics could be retrieved, the number of bonds (or angles) that are observed in the model and the number of bonds (or angles) that are defined in the chemical component dictionary. The Link column lists molecule types, if any, to which the group is linked. The Z score for a bond length (or angle) is the number of standard deviations the observed value is removed from the expected value. A bond length (or angle) with $|Z| > 2$ is considered an outlier worth inspection. RMSZ is the root-mean-square of all Z scores of the bond lengths (or angles).

Mol	Type	Chain	Res	Link	Bond lengths			Bond angles		
					Counts	RMSZ	$\# Z > 2$	Counts	RMSZ	$\# Z > 2$
1	CAS	A	318	1	8,8,9	5.96	3 (37%)	7,9,11	3.89	4 (57%)
1	CAS	A	470	1	8,8,9	6.68	3 (37%)	7,9,11	3.40	4 (57%)
1	CAS	B	318	1	8,8,9	6.56	3 (37%)	7,9,11	3.89	4 (57%)
1	CAS	B	470	1	8,8,9	6.72	3 (37%)	7,9,11	3.39	4 (57%)

In the following table, the Chirals column lists the number of chiral outliers, the number of chiral centers analysed, the number of these observed in the model and the number defined in the chemical

component dictionary. Similar counts are reported in the Torsion and Rings columns. '-' means no outliers of that kind were identified.

Mol	Type	Chain	Res	Link	Chirals	Torsions	Rings
1	CAS	A	318	1	-	0/2/7/9	0/0/0/0
1	CAS	A	470	1	-	0/2/7/9	0/0/0/0
1	CAS	B	318	1	-	0/2/7/9	0/0/0/0
1	CAS	B	470	1	-	0/2/7/9	0/0/0/0

All (12) bond length outliers are listed below:

Mol	Chain	Res	Type	Atoms	Z	Observed(Å)	Ideal(Å)
1	B	318	CAS	O-C	18.02	1.23	1.11
1	B	470	CAS	O-C	17.61	1.23	1.11
1	A	470	CAS	O-C	16.83	1.23	1.11
1	A	318	CAS	O-C	16.43	1.22	1.11
1	A	470	CAS	AS-SG	-7.98	2.20	2.26
1	B	470	CAS	AS-SG	-6.37	2.21	2.26
1	B	318	CAS	AS-SG	-2.92	2.24	2.26
1	B	470	CAS	CB-SG	-2.45	1.76	1.84
1	A	470	CAS	CB-SG	-2.32	1.76	1.84
1	B	318	CAS	CB-SG	-2.30	1.76	1.84
1	A	318	CAS	CB-SG	-2.19	1.77	1.84
1	A	318	CAS	AS-SG	-2.14	2.24	2.26

All (16) bond angle outliers are listed below:

Mol	Chain	Res	Type	Atoms	Z	Observed(°)	Ideal(°)
1	A	318	CAS	CE2-AS-CE1	8.11	109.41	96.77
1	B	318	CAS	CE2-AS-CE1	7.39	108.29	96.77
1	B	470	CAS	CE2-AS-CE1	6.24	106.49	96.77
1	A	470	CAS	CE2-AS-CE1	5.83	105.85	96.77
1	B	318	CAS	C-CA-N	-4.47	109.36	113.83
1	A	470	CAS	CE2-AS-SG	4.27	112.38	96.44
1	B	318	CAS	CE1-AS-SG	4.25	112.28	96.44
1	A	318	CAS	CE1-AS-SG	3.86	110.82	96.44
1	A	470	CAS	C-CA-N	-3.84	109.99	113.83
1	B	470	CAS	C-CA-N	-3.77	110.06	113.83
1	B	470	CAS	CE2-AS-SG	3.72	110.30	96.44
1	B	318	CAS	CE2-AS-SG	3.57	109.76	96.44
1	A	318	CAS	CE2-AS-SG	3.54	109.62	96.44
1	B	470	CAS	CE1-AS-SG	3.52	109.56	96.44
1	A	318	CAS	C-CA-N	-3.37	110.47	113.83
1	A	470	CAS	CE1-AS-SG	3.19	108.32	96.44

There are no chirality outliers.

There are no torsion outliers.

There are no ring outliers.

5.5 Carbohydrates ⓘ

There are no carbohydrates in this entry.

5.6 Ligand geometry ⓘ

16 ligands are modelled in this entry.

In the following table, the Counts columns list the number of bonds (or angles) for which Mogul statistics could be retrieved, the number of bonds (or angles) that are observed in the model and the number of bonds (or angles) that are defined in the chemical component dictionary. The Link column lists molecule types, if any, to which the group is linked. The Z score for a bond length (or angle) is the number of standard deviations the observed value is removed from the expected value. A bond length (or angle) with $|Z| > 2$ is considered an outlier worth inspection. RMSZ is the root-mean-square of all Z scores of the bond lengths (or angles).

Mol	Type	Chain	Res	Link	Bond lengths			Bond angles		
					Counts	RMSZ	$\# Z > 2$	Counts	RMSZ	$\# Z > 2$
2	GOL	A	801	-	5,5,5	0.20	0	5,5,5	0.37	0
2	GOL	A	802	-	5,5,5	0.34	0	5,5,5	0.71	0
2	GOL	A	803	-	5,5,5	0.20	0	5,5,5	0.38	0
3	DMS	A	804	-	3,3,3	0.48	0	3,3,3	0.56	0
3	DMS	A	805	-	3,3,3	0.47	0	3,3,3	0.57	0
3	DMS	A	806	-	3,3,3	0.50	0	3,3,3	0.59	0
4	MET	A	807	-	8,8,8	0.64	0	9,9,9	1.10	0
2	GOL	B	801	-	5,5,5	0.30	0	5,5,5	0.45	0
2	GOL	B	802	-	5,5,5	0.20	0	5,5,5	0.57	0
2	GOL	B	803	-	5,5,5	0.21	0	5,5,5	0.34	0
2	GOL	B	804	-	5,5,5	0.33	0	5,5,5	0.79	0
2	GOL	B	805	-	5,5,5	0.20	0	5,5,5	0.52	0
2	GOL	B	806	-	5,5,5	0.28	0	5,5,5	0.20	0
3	DMS	B	807	-	3,3,3	0.48	0	3,3,3	0.54	0
3	DMS	B	808	-	3,3,3	0.45	0	3,3,3	0.56	0
5	C13	B	809	-	24,24,24	0.30	0	30,30,30	0.43	0

In the following table, the Chirals column lists the number of chiral outliers, the number of chiral centers analysed, the number of these observed in the model and the number defined in the chemical component dictionary. Similar counts are reported in the Torsion and Rings columns. '-' means no outliers of that kind were identified.

Mol	Type	Chain	Res	Link	Chirals	Torsions	Rings
2	GOL	A	801	-	-	0/4/4/4	0/0/0/0
2	GOL	A	802	-	-	0/4/4/4	0/0/0/0
2	GOL	A	803	-	-	0/4/4/4	0/0/0/0
3	DMS	A	804	-	-	0/0/0/0	0/0/0/0
3	DMS	A	805	-	-	0/0/0/0	0/0/0/0
3	DMS	A	806	-	-	0/0/0/0	0/0/0/0
4	MET	A	807	-	-	0/8/8/8	0/0/0/0
2	GOL	B	801	-	-	0/4/4/4	0/0/0/0
2	GOL	B	802	-	-	0/4/4/4	0/0/0/0
2	GOL	B	803	-	-	0/4/4/4	0/0/0/0
2	GOL	B	804	-	-	0/4/4/4	0/0/0/0
2	GOL	B	805	-	-	0/4/4/4	0/0/0/0
2	GOL	B	806	-	-	0/4/4/4	0/0/0/0
3	DMS	B	807	-	-	0/0/0/0	0/0/0/0
3	DMS	B	808	-	-	0/0/0/0	0/0/0/0
5	C13	B	809	-	-	0/13/13/13	0/2/2/2

There are no bond length outliers.

There are no bond angle outliers.

There are no chirality outliers.

There are no torsion outliers.

There are no ring outliers.

5.7 Other polymers ⓘ

There are no such residues in this entry.

5.8 Polymer linkage issues

There are no chain breaks in this entry.

6 Fit of model and data ⓘ

6.1 Protein, DNA and RNA chains ⓘ

In the following table, the column labelled ‘#RSRZ> 2’ contains the number (and percentage) of RSRZ outliers, followed by percent RSRZ outliers for the chain as percentile scores relative to all X-ray entries and entries of similar resolution. The OWAB column contains the minimum, median, 95th percentile and maximum values of the occupancy-weighted average B-factor per residue. The column labelled ‘Q< 0.9’ lists the number of (and percentage) of residues with an average occupancy less than 0.9.

Mol	Chain	Analysed	<RSRZ>	#RSRZ>2		OWAB(Å ²)	Q<0.9
1	A	531/542 (97%)	0.00	34 (6%)	19 19	20, 32, 77, 126	2 (0%)
1	B	533/542 (98%)	-0.02	21 (3%)	37 40	19, 32, 78, 120	2 (0%)
All	All	1064/1084 (98%)	-0.01	55 (5%)	27 27	19, 32, 78, 126	4 (0%)

All (55) RSRZ outliers are listed below:

Mol	Chain	Res	Type	RSRZ
1	A	556	SER	7.1
1	A	757	GLU	6.8
1	B	387	CYS	6.5
1	B	386	PRO	5.9
1	A	558	SER	5.7
1	A	383	ASP	5.6
1	A	557	LYS	5.4
1	B	380	VAL	5.2
1	B	757	GLU	4.8
1	B	758	GLY	4.5
1	B	559	LEU	4.5
1	A	766	SER	4.4
1	B	755	ALA	4.4
1	A	756	VAL	4.3
1	A	767	THR	4.2
1	A	758	GLY	4.1
1	A	587[A]	PHE	4.1
1	A	552	ARG	4.0
1	B	385	ASN	4.0
1	B	377	THR	3.7
1	B	756	VAL	3.7
1	A	768	GLU	3.6
1	A	559	LEU	3.6
1	A	759	GLU	3.4

Continued on next page...

Continued from previous page...

Mol	Chain	Res	Type	RSRZ
1	A	551	ASP	3.3
1	A	593	TYR	3.2
1	A	560	GLY	3.2
1	A	561	ASN	3.1
1	A	685	TRP	3.1
1	B	381	ASP	3.0
1	A	562	VAL	2.9
1	A	491	GLU	2.8
1	B	491	GLU	2.8
1	A	382	LYS	2.8
1	A	548	TRP	2.8
1	A	238	VAL	2.7
1	B	766	SER	2.7
1	B	560	GLY	2.5
1	A	301	GLN	2.5
1	B	558	SER	2.5
1	B	379	GLY	2.5
1	A	555	ILE	2.4
1	A	563	PHE	2.3
1	A	621	LYS	2.3
1	B	391	LEU	2.3
1	B	767	THR	2.3
1	B	754	PRO	2.2
1	A	553	LYS	2.2
1	A	624	VAL	2.2
1	A	755	ALA	2.2
1	B	395	HIS	2.1
1	A	384	GLY	2.1
1	A	625	ASN	2.1
1	B	392	GLU	2.1
1	A	381	ASP	2.0

6.2 Non-standard residues in protein, DNA, RNA chains ⓘ

In the following table, the Atoms column lists the number of modelled atoms in the group and the number defined in the chemical component dictionary. LLDF column lists the quality of electron density of the group with respect to its neighbouring residues in protein, DNA or RNA chains. The B-factors column lists the minimum, median, 95th percentile and maximum values of B factors of atoms in the group. The column labelled 'Q< 0.9' lists the number of atoms with occupancy less than 0.9.

Mol	Type	Chain	Res	Atoms	RSR	LLDF	B-factors(\AA^2)	Q<0.9
1	CAS	A	318	9/10	0.13	-0.63	36,39,44,44	3
1	CAS	A	470	9/10	0.10	-0.93	28,32,44,44	3
1	CAS	B	318	9/10	0.11	-0.95	34,35,40,40	3
1	CAS	B	470	9/10	0.09	-2.30	28,30,37,37	3

6.3 Carbohydrates ⓘ

There are no carbohydrates in this entry.

6.4 Ligands ⓘ

In the following table, the Atoms column lists the number of modelled atoms in the group and the number defined in the chemical component dictionary. LLDF column lists the quality of electron density of the group with respect to its neighbouring residues in protein, DNA or RNA chains. The B-factors column lists the minimum, median, 95th percentile and maximum values of B factors of atoms in the group. The column labelled 'Q< 0.9' lists the number of atoms with occupancy less than 0.9.

Mol	Type	Chain	Res	Atoms	RSR	LLDF	B-factors(\AA^2)	Q<0.9
3	DMS	A	806	4/4	0.30	7.02	90,91,93,95	0
3	DMS	A	804	4/4	0.23	7.00	74,77,79,79	0
2	GOL	B	802	6/6	0.17	4.62	45,45,46,46	0
2	GOL	A	803	6/6	0.26	4.11	58,60,64,70	0
2	GOL	B	806	6/6	0.28	3.80	76,79,81,81	0
2	GOL	B	803	6/6	0.17	3.59	50,55,56,57	0
2	GOL	B	801	6/6	0.25	3.07	55,59,63,67	0
2	GOL	A	801	6/6	0.18	2.95	51,53,54,54	0
2	GOL	B	804	6/6	0.21	2.51	41,45,47,52	0
5	C13	B	809	23/23	0.15	2.21	25,34,51,56	0
3	DMS	B	808	4/4	0.24	2.11	85,86,86,88	0
2	GOL	B	805	6/6	0.20	1.96	46,50,52,52	0
2	GOL	A	802	6/6	0.21	1.70	42,45,45,47	0
3	DMS	A	805	4/4	0.15	0.29	84,89,89,91	0
4	MET	A	807	9/9	0.11	-0.43	21,23,24,24	0
3	DMS	B	807	4/4	0.11	-0.61	86,90,90,91	0

6.5 Other polymers ⓘ

There are no such residues in this entry.