



Full wwPDB X-ray Structure Validation Report

Aug 25, 2014 – 11:22 PM EDT

PDB ID : 4MZQ
Title : beta-Alanyl-CoA:AmmoniaLyase from Clostridium propionicum in complex with propionyl-CoA
Authors : Heine, A.; Reuter, K.
Deposited on : 2013-09-30
Resolution : 1.59 Å(reported)

This is a full wwPDB validation report for a publicly released PDB entry.
We welcome your comments at validation@mail.wwpdb.org
A user guide is available at <http://wwpdb.org/ValidationPDFNotes.html>

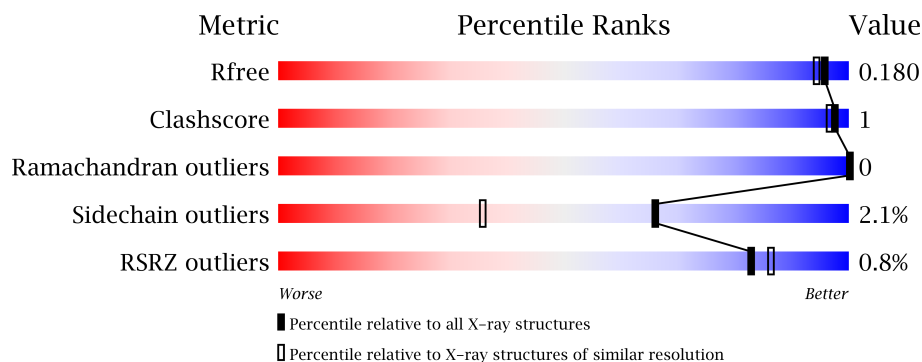
The following versions of software and data (see [references](#)) were used in the production of this report:

MolProbity : 4.02b-467
Mogul : 1.16 November 2013
Xtriage (Phenix) : dev-1439
EDS : stable23489
Percentile statistics : 21963
Refmac : 5.8.0049
CCP4 : 6.3.0 (Settle)
Ideal geometry (proteins) : Engh & Huber (2001)
Ideal geometry (DNA, RNA) : Parkinson et. al. (1996)
Validation Pipeline (wwPDB-VP) : stable23489

1 Overall quality at a glance

The reported resolution of this entry is 1.59 Å.

Percentile scores (ranging between 0-100) for global validation metrics of the entry are shown in the following graphic. The table shows the number of entries on which the scores are based.



Metric	Whole archive (#Entries)	Similar resolution (#Entries, resolution range(Å))
R_{free}	66092	2778 (1.60-1.56)
Clashscore	79885	3207 (1.60-1.56)
Ramachandran outliers	78287	3107 (1.60-1.56)
Sidechain outliers	78261	3104 (1.60-1.56)
RSRZ outliers	66119	2778 (1.60-1.56)

The table below summarises the geometric issues observed across the polymeric chains and their fit to the electron density. The red, orange, yellow and green segments on the lower bar indicate the fraction of residues that contain outliers for ≥ 3 , 2, 1 and 0 types of geometric quality criteria. The upper red bar (where present) indicates the fraction of residues that have poor fit to the electron density.

Mol	Chain	Length	Quality of chain
1	A	144	
1	B	144	
1	C	144	
1	D	144	
1	E	144	
1	F	144	
1	G	144	
1	H	144	
1	I	144	
1	J	144	
1	K	144	
1	L	144	

2 Entry composition ⓘ

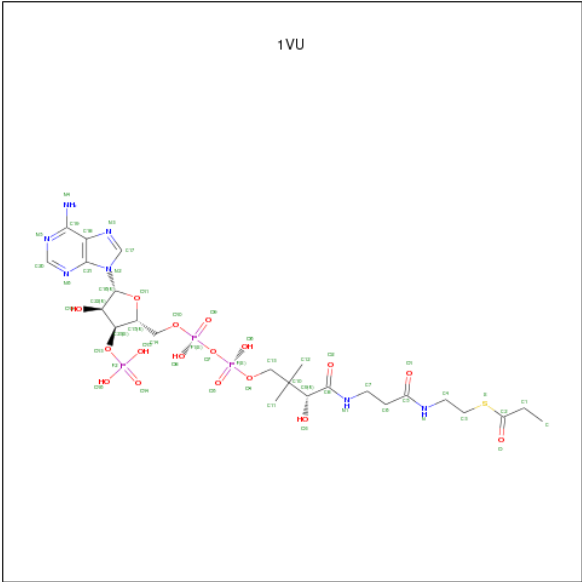
There are 3 unique types of molecules in this entry. The entry contains 15710 atoms, of which 0 are hydrogen and 0 are deuterium.

In the tables below, the ZeroOcc column contains the number of atoms modelled with zero occupancy, the AltConf column contains the number of residues with at least one atom in alternate conformation and the Trace column contains the number of residues modelled with at most 2 atoms.

- Molecule 1 is a protein called beta-Alanyl-CoA:AmmoniaLyase.

Mol	Chain	Residues	Atoms					ZeroOcc	AltConf	Trace
1	A	143	Total	C	N	O	S	0	2	0
			1102	701	185	207	9			
1	B	143	Total	C	N	O	S	0	3	0
			1115	709	185	212	9			
1	C	143	Total	C	N	O	S	0	4	0
			1113	711	183	210	9			
1	D	143	Total	C	N	O	S	0	1	0
			1100	700	183	208	9			
1	E	143	Total	C	N	O	S	0	1	0
			1108	706	184	209	9			
1	F	143	Total	C	N	O	S	0	1	0
			1102	702	183	208	9			
1	G	143	Total	C	N	O	S	0	3	0
			1112	708	184	211	9			
1	H	143	Total	C	N	O	S	0	3	0
			1113	708	186	210	9			
1	I	143	Total	C	N	O	S	0	4	0
			1111	710	186	206	9			
1	J	143	Total	C	N	O	S	0	3	0
			1109	710	183	206	10			
1	K	143	Total	C	N	O	S	0	4	0
			1129	719	186	215	9			
1	L	143	Total	C	N	O	S	0	2	0
			1107	707	181	210	9			

- Molecule 2 is PROPIONYL COENZYME A (three-letter code: 1VU) (formula: $C_{24}H_{40}N_7O_{17}P_3S$).



Mol	Chain	Residues	Atoms						ZeroOcc	AltConf
2	A	1	Total	C	N	O	P	S	0	0
			48	21	7	16	3	1		
2	B	1	Total	C	N	O	P	S	0	0
			48	21	7	16	3	1		
2	C	1	Total	C	N	O	P	S	0	0
			48	21	7	16	3	1		
2	D	1	Total	C	N	O	P	S	0	0
			48	21	7	16	3	1		
2	E	1	Total	C	N	O	P	S	0	0
			48	21	7	16	3	1		
2	F	1	Total	C	N	O	P	S	0	0
			48	21	7	16	3	1		
2	G	1	Total	C	N	O	P	S	0	0
			48	21	7	16	3	1		
2	H	1	Total	C	N	O	P	S	0	0
			48	21	7	16	3	1		
2	I	1	Total	C	N	O	P	S	0	0
			48	21	7	16	3	1		
2	J	1	Total	C	N	O	P	S	0	0
			48	21	7	16	3	1		
2	K	1	Total	C	N	O	P	S	0	0
			48	21	7	16	3	1		
2	L	1	Total	C	N	O	P	S	0	0
			48	21	7	16	3	1		

- Molecule 3 is water.

Mol	Chain	Residues	Atoms		ZeroOcc	AltConf
3	A	148	Total 148	O 148	0	0
3	B	163	Total 163	O 163	0	0
3	C	170	Total 170	O 170	0	0
3	D	140	Total 140	O 140	0	0
3	E	150	Total 150	O 150	0	0
3	F	147	Total 147	O 147	0	0
3	G	145	Total 145	O 145	0	0
3	H	162	Total 162	O 162	0	0
3	I	151	Total 151	O 151	0	0
3	J	127	Total 127	O 127	0	0
3	K	161	Total 161	O 161	0	0
3	L	149	Total 149	O 149	0	0

3 Residue-property plots

These plots are drawn for all protein, RNA and DNA chains in the entry. The first graphic for a chain summarises the proportions of errors displayed in the second graphic. The second graphic shows the sequence view annotated by issues in geometry and electron density. Residues are color-coded according to the number of geometric quality criteria for which they contain at least one outlier: green = 0, yellow = 1, orange = 2 and red = 3 or more. A red dot above a residue indicates a poor fit to the electron density ($RSRZ > 2$). Stretches of 2 or more consecutive residues without any outlier are shown as a green connector. Residues present in the sample, but not in the model, are shown in grey.

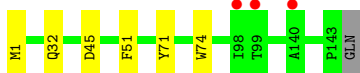
- Molecule 1: beta-Alanyl-CoA:AmmoniaLyase

Chain A: 



- Molecule 1: beta-Alanyl-CoA:AmmoniaLyase

Chain B: 



- Molecule 1: beta-Alanyl-CoA:AmmoniaLyase

Chain C: 



- Molecule 1: beta-Alanyl-CoA:AmmoniaLyase

Chain D: 



- Molecule 1: beta-Alanyl-CoA:AmmoniaLyase

Chain E: 



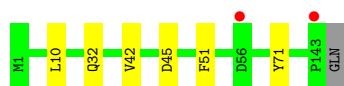
- Molecule 1: beta-Alanyl-CoA:AmmoniaLyase

Chain F: 



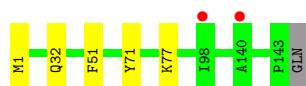
- Molecule 1: beta-Alanyl-CoA:AmmoniaLyase

Chain G: 



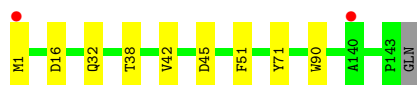
- Molecule 1: beta-Alanyl-CoA:AmmoniaLyase

Chain H: 



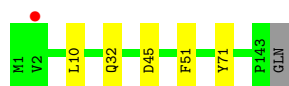
- Molecule 1: beta-Alanyl-CoA:AmmoniaLyase

Chain I: 



- Molecule 1: beta-Alanyl-CoA:AmmoniaLyase

Chain J: 



- Molecule 1: beta-Alanyl-CoA:AmmoniaLyase

Chain K: 



- Molecule 1: beta-Alanyl-CoA:AmmoniaLyase

Chain L: 



4 Data and refinement statistics

Property	Value	Source
Space group	P 1 21 1	Depositor
Cell constants a, b, c, α , β , γ	66.52Å 110.97Å 115.37Å 90.00° 89.98° 90.00°	Depositor
Resolution (Å)	34.28 – 1.59 34.28 – 1.59	Depositor EDS
% Data completeness (in resolution range)	94.5 (34.28-1.59) 94.6 (34.28-1.59)	Depositor EDS
R_{merge}	(Not available)	Depositor
R_{sym}	0.06	Depositor
$\langle I/\sigma(I) \rangle$ ¹	2.97 (at 1.58Å)	Xtriage
Refinement program	PHENIX (phenix.refine: 1.8.4.1492)	Depositor
R, R_{free}	0.179 , 0.213 0.155 , 0.180	Depositor DCC
R_{free} test set	10710 reflections (5.02%)	DCC
Wilson B-factor (Å ²)	11.6	Xtriage
Anisotropy	0.363	Xtriage
Bulk solvent k_{sol} (e/Å ³), B_{sol} (Å ²)	0.37 , 38.7	EDS
Estimated twinning fraction	0.000 for -h,l,k 0.000 for -h,-l,-k 0.165 for h,-k,-l	Xtriage
L-test for twinning	$\langle L \rangle = 0.43$, $\langle L^2 \rangle = 0.25$	Xtriage
Outliers	5 of 213352 reflections (0.002%)	Xtriage
F_o, F_c correlation	0.97	EDS
Total number of atoms	15710	wwPDB-VP
Average B, all atoms (Å ²)	15.0	wwPDB-VP

Xtriage's analysis on translational NCS is as follows: *The analyses of the Patterson function reveals a significant off-origin peak that is 75.87 % of the origin peak, indicating pseudo translational symmetry. The chance of finding a peak of this or larger height randomly in a structure without pseudo translational symmetry is equal to 1.1634e-06. The detected translational NCS is most likely also responsible for the elevated intensity ratio.*

¹Intensities estimated from amplitudes.

5 Model quality

5.1 Standard geometry

Bond lengths and bond angles in the following residue types are not validated in this section: 1VU

The Z score for a bond length (or angle) is the number of standard deviations the observed value is removed from the expected value. A bond length (or angle) with $|Z| > 5$ is considered an outlier worth inspection. RMSZ is the root-mean-square of all Z scores of the bond lengths (or angles).

Mol	Chain	Bond lengths		Bond angles	
		RMSZ	$\# Z > 5$	RMSZ	$\# Z > 5$
1	A	0.34	0/1130	0.51	0/1537
1	B	0.34	0/1149	0.51	0/1561
1	C	0.35	0/1151	0.51	0/1565
1	D	0.35	0/1131	0.50	0/1537
1	E	0.34	0/1139	0.50	0/1546
1	F	0.36	0/1133	0.51	0/1539
1	G	0.38	0/1147	0.51	0/1560
1	H	0.36	0/1144	0.51	0/1554
1	I	0.35	0/1144	0.50	0/1556
1	J	0.35	0/1147	0.52	0/1557
1	K	0.36	0/1162	0.51	0/1578
1	L	0.35	0/1142	0.51	0/1553
All	All	0.35	0/13719	0.51	0/18643

There are no bond length outliers.

There are no bond angle outliers.

There are no chirality outliers.

There are no planarity outliers.

5.2 Close contacts

In the following table, the Non-H and H(model) columns list the number of non-hydrogen atoms and hydrogen atoms in the chain respectively. The H(added) column lists the number of hydrogens added by MolProbity. The Clashes column lists the number of clashes within the asymmetric unit, and the number in parentheses is this value normalized per 1000 atoms of the molecule in the chain. The Symm-Clashes column gives symmetry related clashes, in the same way as for the Clashes column.

Mol	Chain	Non-H	H(model)	H(added)	Clashes	Symm-Clashes
1	A	1102	0	1037	1	0
1	B	1115	0	1056	2	0
1	C	1113	0	1049	1	0
1	D	1100	0	1045	1	0
1	E	1108	0	1059	3	0
1	F	1102	0	1049	2	0
1	G	1112	0	1047	2	0
1	H	1113	0	1057	2	0
1	I	1111	0	1050	5	0
1	J	1109	0	1067	1	0
1	K	1129	0	1070	3	0
1	L	1107	0	1042	2	0
2	A	48	0	33	0	0
2	B	48	0	33	0	0
2	C	48	0	33	0	0
2	D	48	0	33	0	0
2	E	48	0	33	0	0
2	F	48	0	33	0	0
2	G	48	0	33	0	0
2	H	48	0	33	0	0
2	I	48	0	33	0	0
2	J	48	0	33	0	0
2	K	48	0	33	0	0
2	L	48	0	33	0	0
3	A	148	0	0	0	0
3	B	163	0	0	0	0
3	C	170	0	0	0	0
3	D	140	0	0	0	0
3	E	150	0	0	0	0
3	F	147	0	0	0	0
3	G	145	0	0	0	0
3	H	162	0	0	1	0
3	I	151	0	0	1	0
3	J	127	0	0	0	0
3	K	161	0	0	0	0
3	L	149	0	0	0	0
All	All	15710	0	13024	22	0

Clashscore is defined as the number of clashes calculated for the entry per 1000 atoms (including hydrogens) of the entry. The overall clashscore for this entry is 1.

All (22) close contacts within the same asymmetric unit are listed below.

Atom-1	Atom-2	Distance(Å)	Clash(Å)
1:H:1:MET:N	3:H:363:HOH:O	2.22	0.71
1:L:77:LYS:HG2	1:L:84:THR:HB	1.86	0.58
1:D:32:GLN:HG2	1:D:71:TYR:CD2	2.46	0.51
1:B:32:GLN:HG2	1:B:71:TYR:CD2	2.47	0.49
1:I:16:ASP:OD1	3:I:446:HOH:O	2.20	0.49
1:E:32:GLN:HG2	1:E:71:TYR:CD2	2.49	0.48
1:A:32:GLN:HG2	1:A:71:TYR:CD2	2.51	0.46
1:L:32:GLN:HG2	1:L:71:TYR:CD2	2.51	0.45
1:H:32:GLN:HG2	1:H:71:TYR:CD2	2.51	0.45
1:I:32:GLN:HG2	1:I:71:TYR:CD2	2.52	0.45
1:J:32:GLN:HG2	1:J:71:TYR:CD2	2.52	0.45
1:K:32:GLN:HG2	1:K:71:TYR:CD2	2.52	0.44
1:C:32:GLN:HG2	1:C:71:TYR:CD2	2.53	0.44
1:E:77[B]:LYS:HD2	1:I:90:TRP:CH2	2.53	0.43
1:B:1:MET:HG3	1:B:74:TRP:CD1	2.54	0.43
1:G:32:GLN:HG2	1:G:71:TYR:CD2	2.54	0.43
1:I:38:THR:O	1:I:42:VAL:HG23	2.20	0.41
1:F:32:GLN:HG2	1:F:71:TYR:CD2	2.56	0.41
1:E:77[B]:LYS:HD2	1:I:90:TRP:HH2	1.86	0.41
1:G:42:VAL:HG22	1:K:106:ALA:HB3	2.02	0.40
1:F:41:MET:HA	1:F:44:VAL:HG12	2.02	0.40
1:K:39:GLU:HG2	1:K:43:TYR:CE2	2.55	0.40

There are no symmetry-related clashes.

5.3 Torsion angles

5.3.1 Protein backbone ⓘ

In the following table, the Percentiles column shows the percent Ramachandran outliers of the chain as a percentile score with respect to all X-ray entries followed by that with respect to entries of similar resolution.

The Analysed column shows the number of residues for which the backbone conformation was analysed, and the total number of residues.

Mol	Chain	Analysed	Favoured	Allowed	Outliers	Percentiles	
1	A	143/144 (99%)	139 (97%)	4 (3%)	0	100	100
1	B	144/144 (100%)	140 (97%)	4 (3%)	0	100	100
1	C	145/144 (101%)	140 (97%)	5 (3%)	0	100	100
1	D	142/144 (99%)	138 (97%)	4 (3%)	0	100	100

Continued on next page...

Continued from previous page...

Mol	Chain	Analysed	Favoured	Allowed	Outliers	Percentiles	
1	E	142/144 (99%)	139 (98%)	3 (2%)	0	100	100
1	F	142/144 (99%)	138 (97%)	4 (3%)	0	100	100
1	G	144/144 (100%)	140 (97%)	4 (3%)	0	100	100
1	H	144/144 (100%)	140 (97%)	4 (3%)	0	100	100
1	I	145/144 (101%)	141 (97%)	4 (3%)	0	100	100
1	J	143/144 (99%)	139 (97%)	4 (3%)	0	100	100
1	K	145/144 (101%)	140 (97%)	5 (3%)	0	100	100
1	L	143/144 (99%)	138 (96%)	5 (4%)	0	100	100
All	All	1722/1728 (100%)	1672 (97%)	50 (3%)	0	100	100

There are no Ramachandran outliers to report.

5.3.2 Protein sidechains ⓘ

In the following table, the Percentiles column shows the percent sidechain outliers of the chain as a percentile score with respect to all X-ray entries followed by that with respect to entries of similar resolution. The Analysed column shows the number of residues for which the sidechain conformation was analysed, and the total number of residues.

Mol	Chain	Analysed	Rotameric	Outliers	Percentiles	
1	A	113/120 (94%)	111 (98%)	2 (2%)	71	43
1	B	117/120 (98%)	115 (98%)	2 (2%)	73	46
1	C	115/120 (96%)	113 (98%)	2 (2%)	73	46
1	D	115/120 (96%)	113 (98%)	2 (2%)	73	46
1	E	116/120 (97%)	114 (98%)	2 (2%)	73	46
1	F	115/120 (96%)	113 (98%)	2 (2%)	73	46
1	G	116/120 (97%)	112 (97%)	4 (3%)	49	17
1	H	116/120 (97%)	114 (98%)	2 (2%)	73	46
1	I	114/120 (95%)	111 (97%)	3 (3%)	59	26
1	J	116/120 (97%)	112 (97%)	4 (3%)	49	17
1	K	119/120 (99%)	117 (98%)	2 (2%)	73	46
1	L	114/120 (95%)	111 (97%)	3 (3%)	59	26
All	All	1386/1440 (96%)	1356 (98%)	30 (2%)	66	33

All (30) residues with a non-rotameric sidechain are listed below:

Mol	Chain	Res	Type
1	A	45	ASP
1	A	51	PHE
1	B	45	ASP
1	B	51	PHE
1	C	45	ASP
1	C	51	PHE
1	D	45	ASP
1	D	51	PHE
1	E	45	ASP
1	E	51	PHE
1	F	45	ASP
1	F	51	PHE
1	G	10[A]	LEU
1	G	10[B]	LEU
1	G	45	ASP
1	G	51	PHE
1	H	51	PHE
1	H	77	LYS
1	I	1	MET
1	I	45	ASP
1	I	51	PHE
1	J	10[A]	LEU
1	J	10[B]	LEU
1	J	45	ASP
1	J	51	PHE
1	K	45	ASP
1	K	51	PHE
1	L	45	ASP
1	L	51	PHE
1	L	56	ASP

Some sidechains can be flipped to improve hydrogen bonding and reduce clashes. All (1) such sidechains are listed below:

Mol	Chain	Res	Type
1	H	22	ASN

5.3.3 RNA ⓘ

There are no RNA chains in this entry.

5.4 Non-standard residues in protein, DNA, RNA chains ⓘ

There are no non-standard protein/DNA/RNA residues in this entry.

5.5 Carbohydrates ⓘ

There are no carbohydrates in this entry.

5.6 Ligand geometry ⓘ

12 ligands are modelled in this entry.

In the following table, the Counts columns list the number of bonds (or angles) for which Mogul statistics could be retrieved, the number of bonds (or angles) that are observed in the model and the number of bonds (or angles) that are defined in the chemical component dictionary. The Link column lists molecule types, if any, to which the group is linked. The Z score for a bond length (or angle) is the number of standard deviations the observed value is removed from the expected value. A bond length (or angle) with $|Z| > 2$ is considered an outlier worth inspection. RMSZ is the root-mean-square of all Z scores of the bond lengths (or angles).

Mol	Type	Chain	Res	Link	Bond lengths			Bond angles		
					Counts	RMSZ	# $ Z > 2$	Counts	RMSZ	# $ Z > 2$
2	1VU	A	201	-	50,50,54	0.92	2 (4%)	75,75,80	1.60	9 (12%)
2	1VU	B	201	-	50,50,54	0.95	3 (6%)	75,75,80	1.70	6 (8%)
2	1VU	C	201	-	50,50,54	0.85	2 (4%)	75,75,80	1.63	10 (13%)
2	1VU	D	201	-	50,50,54	0.89	2 (4%)	75,75,80	1.60	7 (9%)
2	1VU	E	201	-	50,50,54	0.86	3 (6%)	75,75,80	1.68	9 (12%)
2	1VU	F	201	-	50,50,54	0.83	2 (4%)	75,75,80	1.65	7 (9%)
2	1VU	G	201	-	50,50,54	0.86	2 (4%)	75,75,80	1.63	7 (9%)
2	1VU	H	201	-	50,50,54	0.99	3 (6%)	75,75,80	1.68	6 (8%)
2	1VU	I	201	-	50,50,54	0.81	2 (4%)	75,75,80	1.65	7 (9%)
2	1VU	J	201	-	50,50,54	0.89	3 (6%)	75,75,80	1.71	8 (10%)
2	1VU	K	201	-	50,50,54	0.91	3 (6%)	75,75,80	1.64	6 (8%)
2	1VU	L	201	-	50,50,54	0.90	2 (4%)	75,75,80	1.64	7 (9%)

In the following table, the Chirals column lists the number of chiral outliers, the number of chiral centers analysed, the number of these observed in the model and the number defined in the chemical component dictionary. Similar counts are reported in the Torsion and Rings columns. '-' means no outliers of that kind were identified.

Mol	Type	Chain	Res	Link	Chirals	Torsions	Rings
2	1VU	A	201	-	-	0/48/64/69	0/3/3/3
2	1VU	B	201	-	-	0/48/64/69	0/3/3/3
2	1VU	C	201	-	-	0/48/64/69	0/3/3/3
2	1VU	D	201	-	-	0/48/64/69	0/3/3/3
2	1VU	E	201	-	-	0/48/64/69	0/3/3/3
2	1VU	F	201	-	-	0/48/64/69	0/3/3/3
2	1VU	G	201	-	-	0/48/64/69	0/3/3/3
2	1VU	H	201	-	-	0/48/64/69	0/3/3/3
2	1VU	I	201	-	-	0/48/64/69	0/3/3/3
2	1VU	J	201	-	-	0/48/64/69	0/3/3/3
2	1VU	K	201	-	-	0/48/64/69	0/3/3/3
2	1VU	L	201	-	-	0/48/64/69	0/3/3/3

All (29) bond length outliers are listed below:

Mol	Chain	Res	Type	Atoms	Z	Observed(Å)	Ideal(Å)
2	H	201	1VU	C10-C9	-4.17	1.52	1.55
2	B	201	1VU	C10-C9	-3.99	1.53	1.55
2	L	201	1VU	C10-C9	-3.75	1.53	1.55
2	K	201	1VU	C10-C9	-3.65	1.53	1.55
2	D	201	1VU	C10-C9	-3.52	1.53	1.55
2	A	201	1VU	C10-C9	-3.44	1.53	1.55
2	J	201	1VU	C10-C9	-3.26	1.53	1.55
2	A	201	1VU	C21-N2	-3.16	1.33	1.37
2	G	201	1VU	C21-N2	-3.03	1.33	1.37
2	H	201	1VU	C21-N2	-2.96	1.33	1.37
2	E	201	1VU	C10-C9	-2.92	1.53	1.55
2	F	201	1VU	C21-N2	-2.87	1.33	1.37
2	C	201	1VU	C21-N2	-2.83	1.33	1.37
2	G	201	1VU	C10-C9	-2.80	1.53	1.55
2	C	201	1VU	C10-C9	-2.79	1.53	1.55
2	D	201	1VU	C21-N2	-2.76	1.33	1.37
2	L	201	1VU	C21-N2	-2.76	1.33	1.37
2	F	201	1VU	C10-C9	-2.70	1.53	1.55
2	B	201	1VU	C21-N2	-2.70	1.33	1.37
2	E	201	1VU	C21-N2	-2.68	1.33	1.37
2	I	201	1VU	C21-N2	-2.52	1.34	1.37
2	K	201	1VU	C21-N2	-2.46	1.34	1.37
2	J	201	1VU	C21-N2	-2.39	1.34	1.37
2	I	201	1VU	C10-C9	-2.32	1.54	1.55
2	J	201	1VU	O11-C16	2.21	1.44	1.41
2	H	201	1VU	O11-C16	2.19	1.44	1.41
2	K	201	1VU	O11-C16	2.13	1.43	1.41

Continued on next page...

Continued from previous page...

Mol	Chain	Res	Type	Atoms	Z	Observed(Å)	Ideal(Å)
2	B	201	1VU	O11-C16	2.09	1.43	1.41
2	E	201	1VU	O11-C16	2.04	1.43	1.41

All (89) bond angle outliers are listed below:

Mol	Chain	Res	Type	Atoms	Z	Observed(°)	Ideal(°)
2	B	201	1VU	N6-C20-N5	-9.45	120.58	128.89
2	K	201	1VU	N6-C20-N5	-9.12	120.86	128.89
2	L	201	1VU	N6-C20-N5	-9.11	120.88	128.89
2	H	201	1VU	N6-C20-N5	-9.11	120.88	128.89
2	E	201	1VU	N6-C20-N5	-9.03	120.94	128.89
2	I	201	1VU	N6-C20-N5	-8.99	120.98	128.89
2	F	201	1VU	N6-C20-N5	-8.96	121.01	128.89
2	J	201	1VU	N6-C20-N5	-8.56	121.36	128.89
2	C	201	1VU	N6-C20-N5	-8.47	121.44	128.89
2	G	201	1VU	N6-C20-N5	-7.92	121.93	128.89
2	A	201	1VU	N6-C20-N5	-7.76	122.06	128.89
2	D	201	1VU	N6-C20-N5	-7.70	122.12	128.89
2	J	201	1VU	C18-C21-N6	-6.25	119.89	125.98
2	G	201	1VU	C18-C21-N6	-6.13	120.00	125.98
2	F	201	1VU	C18-C21-N6	-6.04	120.09	125.98
2	D	201	1VU	C18-C21-N6	-5.85	120.28	125.98
2	I	201	1VU	C18-C21-N6	-5.83	120.30	125.98
2	E	201	1VU	C18-C21-N6	-5.77	120.36	125.98
2	C	201	1VU	C18-C21-N6	-5.75	120.37	125.98
2	K	201	1VU	C18-C21-N6	-5.71	120.41	125.98
2	A	201	1VU	C18-C21-N6	-5.58	120.54	125.98
2	B	201	1VU	C18-C21-N6	-5.52	120.60	125.98
2	L	201	1VU	C18-C21-N6	-5.52	120.60	125.98
2	H	201	1VU	C18-C21-N6	-5.34	120.77	125.98
2	H	201	1VU	P1-O7-P	-4.09	120.61	131.93
2	J	201	1VU	N6-C21-N2	4.08	132.40	125.39
2	F	201	1VU	N6-C21-N2	4.07	132.37	125.39
2	D	201	1VU	N6-C21-N2	3.93	132.13	125.39
2	G	201	1VU	N6-C21-N2	3.84	131.97	125.39
2	I	201	1VU	N6-C21-N2	3.84	131.97	125.39
2	J	201	1VU	P1-O7-P	-3.81	121.38	131.93
2	B	201	1VU	N6-C21-N2	3.75	131.82	125.39
2	L	201	1VU	N6-C21-N2	3.74	131.81	125.39
2	H	201	1VU	N6-C21-N2	3.70	131.74	125.39
2	A	201	1VU	N6-C21-N2	3.65	131.66	125.39
2	C	201	1VU	N6-C21-N2	3.62	131.60	125.39

Continued on next page...

Continued from previous page...

Mol	Chain	Res	Type	Atoms	Z	Observed(°)	Ideal(°)
2	B	201	1VU	P1-O7-P	-3.60	121.97	131.93
2	D	201	1VU	P1-O7-P	-3.56	122.08	131.93
2	E	201	1VU	N6-C21-N2	3.53	131.46	125.39
2	K	201	1VU	N6-C21-N2	3.45	131.31	125.39
2	L	201	1VU	P1-O7-P	-3.44	122.39	131.93
2	A	201	1VU	P1-O7-P	-3.44	122.40	131.93
2	E	201	1VU	P1-O7-P	-3.33	122.72	131.93
2	G	201	1VU	P1-O7-P	-3.10	123.36	131.93
2	J	201	1VU	C4-C3-S	-3.00	110.22	112.53
2	E	201	1VU	O7-P-O4	-2.83	95.42	102.91
2	F	201	1VU	P1-O7-P	-2.80	124.17	131.93
2	C	201	1VU	C21-C18-N3	-2.75	106.75	109.41
2	K	201	1VU	C21-C18-N3	-2.72	106.78	109.41
2	C	201	1VU	P1-O7-P	-2.71	124.43	131.93
2	J	201	1VU	C21-C18-N3	-2.71	106.80	109.41
2	I	201	1VU	P1-O7-P	-2.65	124.58	131.93
2	E	201	1VU	C21-C18-N3	-2.64	106.86	109.41
2	A	201	1VU	C17-N2-C21	2.49	108.98	106.96
2	I	201	1VU	C21-C18-N3	-2.46	107.03	109.41
2	H	201	1VU	C17-N2-C21	2.43	108.93	106.96
2	A	201	1VU	C16-N2-C21	-2.43	122.44	126.64
2	A	201	1VU	C21-C18-N3	-2.41	107.08	109.41
2	C	201	1VU	O7-P1-O10	-2.41	96.54	102.91
2	G	201	1VU	C21-C18-N3	-2.36	107.13	109.41
2	B	201	1VU	C17-N2-C21	2.36	108.88	106.96
2	F	201	1VU	C20-N6-C21	2.35	120.05	113.27
2	F	201	1VU	C17-N2-C21	2.34	108.86	106.96
2	B	201	1VU	C20-N6-C21	2.33	119.98	113.27
2	I	201	1VU	C20-N6-C21	2.33	119.98	113.27
2	E	201	1VU	C20-N6-C21	2.33	119.97	113.27
2	J	201	1VU	C20-N6-C21	2.32	119.94	113.27
2	K	201	1VU	P1-O7-P	-2.30	125.56	131.93
2	K	201	1VU	C20-N6-C21	2.28	119.83	113.27
2	G	201	1VU	C3-C4-N	2.27	117.53	112.45
2	C	201	1VU	C16-N2-C21	-2.27	122.72	126.64
2	F	201	1VU	O13-P2-O14	-2.26	100.31	106.80
2	G	201	1VU	C20-N6-C21	2.24	119.71	113.27
2	L	201	1VU	C20-N6-C21	2.24	119.71	113.27
2	D	201	1VU	O16-P2-O15	2.22	115.72	107.38
2	H	201	1VU	C20-N6-C21	2.22	119.66	113.27
2	C	201	1VU	C20-N6-C21	2.19	119.59	113.27
2	D	201	1VU	C21-C18-N3	-2.18	107.30	109.41

Continued on next page...

Continued from previous page...

Mol	Chain	Res	Type	Atoms	Z	Observed(°)	Ideal(°)
2	C	201	1VU	O16-P2-O15	2.16	115.49	107.38
2	C	201	1VU	C17-N2-C21	2.16	108.71	106.96
2	D	201	1VU	C17-N2-C21	2.15	108.71	106.96
2	J	201	1VU	C17-N2-C21	2.12	108.68	106.96
2	L	201	1VU	C17-N2-C21	2.11	108.67	106.96
2	A	201	1VU	O16-P2-O15	2.09	115.21	107.38
2	L	201	1VU	O7-P-O4	-2.05	97.48	102.91
2	I	201	1VU	C17-N2-C21	2.04	108.61	106.96
2	E	201	1VU	O8-P1-O9	2.02	123.35	112.14
2	E	201	1VU	C17-N2-C21	2.01	108.59	106.96
2	A	201	1VU	C20-N6-C21	2.01	119.06	113.27

There are no chirality outliers.

There are no torsion outliers.

There are no ring outliers.

5.7 Other polymers ⓘ

There are no such residues in this entry.

5.8 Polymer linkage issues

There are no chain breaks in this entry.

6 Fit of model and data ⓘ

6.1 Protein, DNA and RNA chains ⓘ

In the following table, the column labelled ‘#RSRZ> 2’ contains the number (and percentage) of RSRZ outliers, followed by percent RSRZ outliers for the chain as percentile scores relative to all X-ray entries and entries of similar resolution. The OWAB column contains the minimum, median, 95th percentile and maximum values of the occupancy-weighted average B-factor per residue. The column labelled ‘Q< 0.9’ lists the number of (and percentage) of residues with an average occupancy less than 0.9.

Mol	Chain	Analysed	<RSRZ>	#RSRZ>2	OWAB(Å ²)	Q<0.9
1	A	143/144 (99%)	-0.32	0 100 100	8, 12, 23, 35	0
1	B	143/144 (99%)	-0.19	3 (2%) 60 62	9, 12, 27, 36	1 (0%)
1	C	143/144 (99%)	-0.26	0 100 100	7, 12, 21, 28	1 (0%)
1	D	143/144 (99%)	-0.25	1 (0%) 84 88	9, 13, 25, 36	0
1	E	143/144 (99%)	-0.27	1 (0%) 84 88	9, 12, 23, 32	0
1	F	143/144 (99%)	-0.28	0 100 100	8, 12, 23, 30	0
1	G	143/144 (99%)	-0.28	2 (1%) 72 75	8, 11, 21, 29	0
1	H	143/144 (99%)	-0.20	2 (1%) 72 75	8, 12, 23, 39	0
1	I	143/144 (99%)	-0.20	2 (1%) 72 75	9, 13, 25, 36	0
1	J	143/144 (99%)	-0.19	1 (0%) 84 88	8, 13, 27, 37	0
1	K	143/144 (99%)	-0.18	1 (0%) 84 88	6, 12, 25, 32	0
1	L	143/144 (99%)	-0.28	0 100 100	8, 12, 24, 28	0
All	All	1716/1728 (99%)	-0.24	13 (0%) 83 86	6, 12, 25, 39	2 (0%)

All (13) RSRZ outliers are listed below:

Mol	Chain	Res	Type	RSRZ
1	B	140	ALA	4.6
1	B	98	ILE	4.1
1	K	98	ILE	3.9
1	G	56[A]	ASP	2.9
1	H	140	ALA	2.7
1	I	1	MET	2.6
1	H	98	ILE	2.4
1	J	2	VAL	2.3
1	B	99	THR	2.3
1	I	140	ALA	2.2
1	E	139	ASP	2.1

Continued on next page...

Continued from previous page...

Mol	Chain	Res	Type	RSRZ
1	G	143	PRO	2.1
1	D	139	ASP	2.0

6.2 Non-standard residues in protein, DNA, RNA chains ⓘ

There are no non-standard protein/DNA/RNA residues in this entry.

6.3 Carbohydrates ⓘ

There are no carbohydrates in this entry.

6.4 Ligands ⓘ

In the following table, the Atoms column lists the number of modelled atoms in the group and the number defined in the chemical component dictionary. LLDF column lists the quality of electron density of the group with respect to its neighbouring residues in protein, DNA or RNA chains. The B-factors column lists the minimum, median, 95th percentile and maximum values of B factors of atoms in the group. The column labelled 'Q< 0.9' lists the number of atoms with occupancy less than 0.9.

Mol	Type	Chain	Res	Atoms	RSR	LLDF	B-factors(Å ²)	Q<0.9
2	1VU	J	201	48/52	0.09	0.85	14,19,35,42	0
2	1VU	D	201	48/52	0.09	0.61	15,19,36,52	0
2	1VU	I	201	48/52	0.08	0.39	10,16,33,40	0
2	1VU	L	201	48/52	0.08	0.36	13,17,30,33	0
2	1VU	F	201	48/52	0.08	0.14	10,16,28,30	0
2	1VU	K	201	48/52	0.08	0.12	13,17,28,32	0
2	1VU	E	201	48/52	0.08	-0.01	12,16,27,31	0
2	1VU	C	201	48/52	0.07	-0.22	10,15,31,39	0
2	1VU	H	201	48/52	0.07	-0.32	11,14,28,33	0
2	1VU	A	201	48/52	0.06	-0.44	9,13,21,31	0
2	1VU	B	201	48/52	0.07	-0.47	11,14,25,28	0
2	1VU	G	201	48/52	0.06	-0.56	10,13,21,28	0

6.5 Other polymers ⓘ

There are no such residues in this entry.