



# Full wwPDB X-ray Structure Validation Report

Feb 28, 2014 – 07:49 AM GMT

PDB ID : 1N0S  
Title : ENGINEERED LIPOCALIN FLUA IN COMPLEX WITH FLUORESCCEIN  
Authors : Korndorfer, I.P.; Skerra, A.  
Deposited on : 2002-10-15  
Resolution : 2.00 Å(reported)

This is a full wwPDB validation report for a publicly released PDB entry.  
We welcome your comments at [validation@mail.wwpdb.org](mailto:validation@mail.wwpdb.org)  
A user guide is available at <http://wwpdb.org/ValidationPDFNotes.html>

---

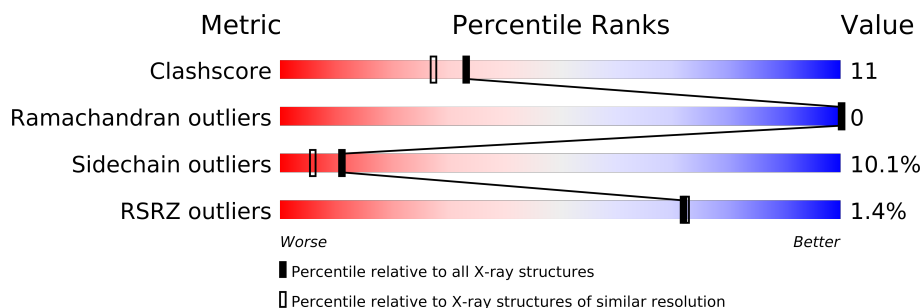
The following versions of software and data (see [references](#)) were used in the production of this report:

MolProbity : 4.02b-467  
Mogul : 1.15 2013  
Xtriage (Phenix) : dev-1323  
EDS : stable22639  
Percentile statistics : 21963  
Refmac : 5.8.0049  
CCP4 : 6.3.0 (Settle)  
Ideal geometry (proteins) : Engh & Huber (2001)  
Ideal geometry (DNA, RNA) : Parkinson et. al. (1996)  
Validation Pipeline (wwPDB-VP) : stable22683

# 1 Overall quality at a glance

The reported resolution of this entry is 2.00 Å.

Percentile scores (ranging between 0-100) for global validation metrics of the entry are shown in the following graphic. The table shows the number of entries on which the scores are based.



Metric	Whole archive (#Entries)	Similar resolution (#Entries, resolution range(Å))
Clashscore	79885	6188 (2.00-2.00)
Ramachandran outliers	78287	6102 (2.00-2.00)
Sidechain outliers	78261	6100 (2.00-2.00)
RSRZ outliers	66119	4890 (2.00-2.00)

The table below summarises the geometric issues observed across the polymeric chains and their fit to the electron density. The red, orange, yellow and green segments on the lower bar indicate the fraction of residues that contain outliers for  $\geq 3$ , 2, 1 and 0 types of geometric quality criteria. The upper red bar (where present) indicates the fraction of residues that have poor fit to the electron density.

Mol	Chain	Length	Quality of chain
1	A	184	
1	B	184	

The following table lists non-polymeric compounds that are outliers for geometric or electron-density-fit criteria:

Mol	Type	Chain	Res	Geometry	Electron density
2	SO4	B	185	-	X

## 2 Entry composition

There are 4 unique types of molecules in this entry. The entry contains 2933 atoms, of which 0 are hydrogen and 0 are deuterium.

In the tables below, the ZeroOcc column contains the number of atoms modelled with zero occupancy, the AltConf column contains the number of residues with at least one atom in alternate conformation and the Trace column contains the number of residues modelled with at most 2 atoms.

- Molecule 1 is a protein called Bilin-binding protein.

Mol	Chain	Residues	Atoms					ZeroOcc	AltConf	Trace
1	A	173	Total	C	N	O	S	0	0	0
			1390	889	232	263	6			
1	B	173	Total	C	N	O	S	0	0	0
			1390	889	232	263	6			

There are 62 discrepancies between the modelled and reference sequences:

Chain	Residue	Modelled	Actual	Comment	Reference
A	1	ASP	ASN	SEE REMARK 999	UNP P09464
A	21	GLN	ASN	SEE REMARK 999	UNP P09464
A	34	SER	ASN	SEE REMARK 999	UNP P09464
A	35	PRO	SER	SEE REMARK 999	UNP P09464
A	36	ASN	VAL	SEE REMARK 999	UNP P09464
A	37	GLY	GLU	SEE REMARK 999	UNP P09464
A	58	ARG	ASN	SEE REMARK 999	UNP P09464
A	60	ASP	HIS	SEE REMARK 999	UNP P09464
A	69	MET	ILE	SEE REMARK 999	UNP P09464
A	87	SER	LYS	SEE REMARK 999	UNP P09464
A	88	ARG	LEU	SEE REMARK 999	UNP P09464
A	90	VAL	TYR	SEE REMARK 999	UNP P09464
A	93	TYR	VAL	SEE REMARK 999	UNP P09464
A	95	ARG	LYS	SEE REMARK 999	UNP P09464
A	96	LYS	GLU	SEE REMARK 999	UNP P09464
A	97	THR	ASN	SEE REMARK 999	UNP P09464
A	114	SER	TYR	SEE REMARK 999	UNP P09464
A	116	ARG	LYS	SEE REMARK 999	UNP P09464
A	125	TRP	GLN	SEE REMARK 999	UNP P09464
A	127	HIS	PHE	SEE REMARK 999	UNP P09464
A	135	MET	LYS	SEE REMARK 999	UNP P09464
A	175	SER	-	SEE REMARK 999	UNP P09464
A	176	ASN	-	SEE REMARK 999	UNP P09464
A	177	TRP	-	SEE REMARK 999	UNP P09464
A	178	SER	-	SEE REMARK 999	UNP P09464

*Continued on next page...*

*Continued from previous page...*

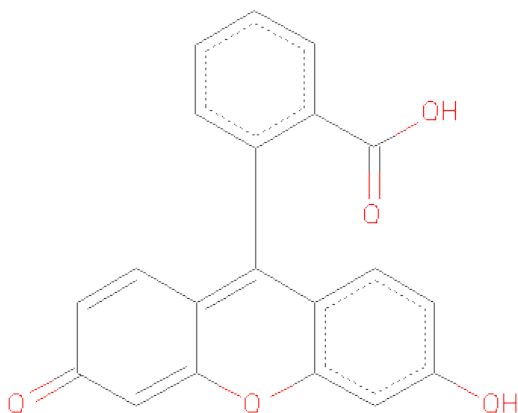
Chain	Residue	Modelled	Actual	Comment	Reference
A	179	HIS	-	SEE REMARK 999	UNP P09464
A	180	PRO	-	SEE REMARK 999	UNP P09464
A	181	GLN	-	SEE REMARK 999	UNP P09464
A	182	PHE	-	SEE REMARK 999	UNP P09464
A	183	GLU	-	SEE REMARK 999	UNP P09464
A	184	LYS	-	SEE REMARK 999	UNP P09464
B	1	ASP	ASN	SEE REMARK 999	UNP P09464
B	21	GLN	ASN	SEE REMARK 999	UNP P09464
B	34	SER	ASN	SEE REMARK 999	UNP P09464
B	35	PRO	SER	SEE REMARK 999	UNP P09464
B	36	ASN	VAL	SEE REMARK 999	UNP P09464
B	37	GLY	GLU	SEE REMARK 999	UNP P09464
B	58	ARG	ASN	SEE REMARK 999	UNP P09464
B	60	ASP	HIS	SEE REMARK 999	UNP P09464
B	69	MET	ILE	SEE REMARK 999	UNP P09464
B	87	SER	LYS	SEE REMARK 999	UNP P09464
B	88	ARG	LEU	SEE REMARK 999	UNP P09464
B	90	VAL	TYR	SEE REMARK 999	UNP P09464
B	93	TYR	VAL	SEE REMARK 999	UNP P09464
B	95	ARG	LYS	SEE REMARK 999	UNP P09464
B	96	LYS	GLU	SEE REMARK 999	UNP P09464
B	97	THR	ASN	SEE REMARK 999	UNP P09464
B	114	SER	TYR	SEE REMARK 999	UNP P09464
B	116	ARG	LYS	SEE REMARK 999	UNP P09464
B	125	TRP	GLN	SEE REMARK 999	UNP P09464
B	127	HIS	PHE	SEE REMARK 999	UNP P09464
B	135	MET	LYS	SEE REMARK 999	UNP P09464
B	175	SER	-	SEE REMARK 999	UNP P09464
B	176	ASN	-	SEE REMARK 999	UNP P09464
B	177	TRP	-	SEE REMARK 999	UNP P09464
B	178	SER	-	SEE REMARK 999	UNP P09464
B	179	HIS	-	SEE REMARK 999	UNP P09464
B	180	PRO	-	SEE REMARK 999	UNP P09464
B	181	GLN	-	SEE REMARK 999	UNP P09464
B	182	PHE	-	SEE REMARK 999	UNP P09464
B	183	GLU	-	SEE REMARK 999	UNP P09464
B	184	LYS	-	SEE REMARK 999	UNP P09464

- Molecule 2 is SULFATE ION (three-letter code: SO4) (formula: O<sub>4</sub>S).



Mol	Chain	Residues	Atoms			ZeroOcc	AltConf
2	B	1	Total	O	S	0	0
			5	4	1		

- Molecule 3 is 2-(6-HYDROXY-3-OXO-3H-XANTHEN-9-YL)-BENZOICACID (three-letter code: FLU) (formula: C<sub>20</sub>H<sub>12</sub>O<sub>5</sub>).



Mol	Chain	Residues	Atoms			ZeroOcc	AltConf
3	A	1	Total	C	O	0	0
			25	20	5		
3	B	1	Total	C	O	0	0
			25	20	5		

- Molecule 4 is water.

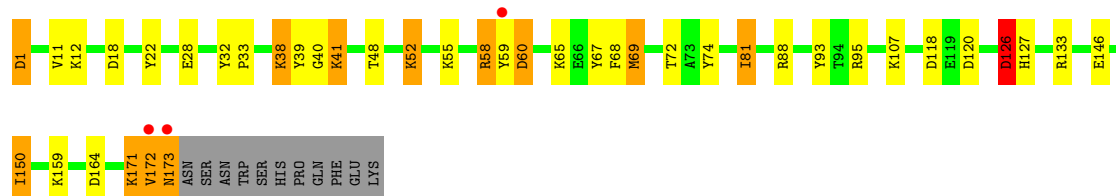
Mol	Chain	Residues	Atoms		ZeroOcc	AltConf
4	A	53	Total 53	O 53	0	0
4	B	45	Total 45	O 45	0	0

### 3 Residue-property plots

These plots are drawn for all protein, RNA and DNA chains in the entry. The first graphic for a chain summarises the proportions of errors displayed in the second graphic. The second graphic shows the sequence view annotated by issues in geometry and electron density. Residues are color-coded according to the number of geometric quality criteria for which they contain at least one outlier: green = 0, yellow = 1, orange = 2 and red = 3 or more. A red dot above a residue indicates a poor fit to the electron density ( $\text{RSRZ} > 2$ ). Stretches of 2 or more consecutive residues without any outlier are shown as a green connector. Residues present in the sample, but not in the model, are shown in grey.

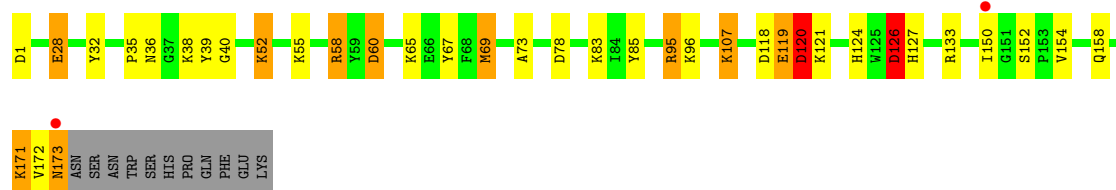
- Molecule 1: Bilin-binding protein

Chain A: 



- Molecule 1: Bilin-binding protein

Chain B: 



## 4 Data and refinement statistics

Property	Value	Source
Space group	P 1 21 1	Depositor
Cell constants a, b, c, $\alpha$ , $\beta$ , $\gamma$	42.80Å 85.04Å 66.06Å 90.00° 106.18° 90.00°	Depositor
Resolution (Å)	63.25 – 2.00 29.38 – 2.00	Depositor EDS
% Data completeness (in resolution range)	95.7 (63.25-2.00) 95.4 (29.38-2.00)	Depositor EDS
$R_{merge}$	(Not available)	Depositor
$R_{sym}$	0.05	Depositor
$\langle I/\sigma(I) \rangle$ <sup>1</sup>	2.52 (at 2.00Å)	Xtriage
Refinement program	REFMAC 5.1.19	Depositor
R, $R_{free}$	0.193 , 0.243 0.197 , (Not available)	Depositor DCC
$R_{free}$ test set	No test flags present.	DCC
Wilson B-factor (Å <sup>2</sup> )	30.0	Xtriage
Anisotropy	0.064	Xtriage
Bulk solvent $k_{sol}$ (e/Å <sup>3</sup> ), $B_{sol}$ (Å <sup>2</sup> )	0.36 , 51.3	EDS
Estimated twinning fraction	0.080 for h,-k,-h-l	Xtriage
L-test for twinning	$\langle  L  \rangle = 0.49$ , $\langle L^2 \rangle = 0.32$	Xtriage
Outliers	0 of 29506 reflections	Xtriage
$F_o, F_c$ correlation	0.95	EDS
Total number of atoms	2933	wwPDB-VP
Average B, all atoms (Å <sup>2</sup> )	34.0	wwPDB-VP

Xtriage's analysis on translational NCS is as follows: *The largest off-origin peak in the Patterson function is 7.16% of the height of the origin peak. No significant pseudotranslation is detected.*

<sup>1</sup>Intensities estimated from amplitudes.



## 5 Model quality ⓘ

### 5.1 Standard geometry ⓘ

Bond lengths and bond angles in the following residue types are not validated in this section: FLU, SO4

The Z score for a bond length (or angle) is the number of standard deviations the observed value is removed from the expected value. A bond length (or angle) with  $|Z| > 5$  is considered an outlier worth inspection. RMSZ is the root-mean-square of all Z scores of the bond lengths (or angles).

Mol	Chain	Bond lengths		Bond angles	
		RMSZ	# Z  >5	RMSZ	# Z  >5
1	A	0.71	0/1433	1.76	23/1944 (1.2%)
1	B	0.71	0/1433	1.52	19/1944 (1.0%)
All	All	0.71	0/2866	1.65	42/3888 (1.1%)

There are no bond length outliers.

All (42) bond angle outliers are listed below:

Mol	Chain	Res	Type	Atoms	Z	Observed(°)	Ideal(°)
1	A	58	ARG	NE-CZ-NH2	-26.26	107.17	120.30
1	A	126	ASP	CB-CG-OD1	-23.05	97.55	118.30
1	A	58	ARG	NE-CZ-NH1	22.03	131.31	120.30
1	B	58	ARG	NE-CZ-NH2	-21.72	109.44	120.30
1	A	126	ASP	CB-CG-OD2	21.40	137.56	118.30
1	B	58	ARG	NE-CZ-NH1	13.64	127.12	120.30
1	B	60	ASP	CB-CG-OD2	11.98	129.08	118.30
1	A	60	ASP	CB-CG-OD2	11.45	128.60	118.30
1	B	126	ASP	CB-CG-OD2	10.68	127.91	118.30
1	A	1	ASP	CB-CG-OD2	9.67	127.01	118.30
1	A	133	ARG	NE-CZ-NH2	-9.64	115.48	120.30
1	A	39	TYR	C-N-CA	9.28	141.78	122.30
1	A	58	ARG	CD-NE-CZ	8.61	135.65	123.60
1	A	164	ASP	CB-CG-OD2	8.39	125.85	118.30
1	B	1	ASP	CB-CG-OD2	8.25	125.73	118.30
1	B	39	TYR	C-N-CA	7.95	138.99	122.30
1	A	39	TYR	CA-C-N	7.93	132.05	116.20
1	B	39	TYR	CA-C-N	7.85	131.90	116.20
1	B	39	TYR	O-C-N	-7.83	109.90	123.20
1	B	126	ASP	CB-CA-C	-7.44	95.53	110.40
1	A	133	ARG	NE-CZ-NH1	7.35	123.97	120.30
1	B	133	ARG	NE-CZ-NH2	-7.12	116.74	120.30

*Continued on next page...*

*Continued from previous page...*

Mol	Chain	Res	Type	Atoms	Z	Observed(°)	Ideal(°)
1	B	69	MET	CB-CG-SD	7.09	133.68	112.40
1	B	58	ARG	CD-NE-CZ	6.89	133.25	123.60
1	A	95	ARG	NE-CZ-NH2	-6.89	116.86	120.30
1	A	39	TYR	O-C-N	-6.68	111.85	123.20
1	A	126	ASP	N-CA-CB	-6.58	98.76	110.60
1	B	69	MET	CA-CB-CG	6.49	124.33	113.30
1	A	126	ASP	CB-CA-C	-6.47	97.46	110.40
1	B	95	ARG	NE-CZ-NH2	-6.45	117.08	120.30
1	B	60	ASP	CB-CG-OD1	-6.26	112.67	118.30
1	A	18	ASP	CB-CG-OD1	6.10	123.79	118.30
1	B	28	GLU	OE1-CD-OE2	-5.77	116.37	123.30
1	A	55	LYS	CD-CE-NZ	5.63	124.65	111.70
1	B	58	ARG	CG-CD-NE	-5.38	100.51	111.80
1	B	120	ASP	CB-CG-OD2	5.30	123.07	118.30
1	A	58	ARG	CG-CD-NE	-5.24	100.79	111.80
1	A	41	LYS	CD-CE-NZ	-5.19	99.76	111.70
1	A	48	THR	CB-CA-C	-5.15	97.69	111.60
1	A	60	ASP	CB-CG-OD1	-5.10	113.71	118.30
1	B	83	LYS	N-CA-C	-5.05	97.38	111.00
1	A	72	THR	OG1-CB-CG2	-5.01	98.47	110.00

There are no chirality outliers.

There are no planarity outliers.

## 5.2 Close contacts ⓘ

In the following table, the Non-H and H(model) columns list the number of non-hydrogen atoms and hydrogen atoms in the chain respectively. The H(added) column lists the number of hydrogens added by MolProbity. The Clashes column lists the number of clashes within the asymmetric unit, and the number in parentheses is this value normalized per 1000 atoms of the molecule in the chain. The Symm-Clashes column gives symmetry related clashes, in the same way as for the Clashes column.

Mol	Chain	Non-H	H(model)	H(added)	Clashes	Symm-Clashes
1	A	1390	0	1316	33	0
1	B	1390	0	1316	29	0
2	B	5	0	0	3	0
3	A	25	0	10	2	0
3	B	25	0	10	3	0
4	A	53	0	0	4	0
4	B	45	0	0	3	0
All	All	2933	0	2652	61	0

Clashscore is defined as the number of clashes calculated for the entry per 1000 atoms (including hydrogens) of the entry. The overall clashscore for this entry is 11.

All (61) close contacts within the same asymmetric unit are listed below.

Atom-1	Atom-2	Distance(Å)	Clash(Å)
1:A:52:LYS:H	1:A:52:LYS:HD2	1.35	0.91
1:A:59:TYR:CE1	1:A:68:PHE:HE2	1.90	0.90
1:A:59:TYR:CD1	1:A:68:PHE:CE2	2.62	0.87
1:A:52:LYS:H	1:A:52:LYS:CD	1.87	0.84
1:B:52:LYS:H	1:B:52:LYS:HD2	1.44	0.81
1:B:95:ARG:NH1	2:B:185:SO4:O1	2.13	0.80
1:A:59:TYR:CE1	1:A:68:PHE:CE2	2.69	0.80
1:A:59:TYR:CD1	1:A:68:PHE:HE2	2.01	0.79
1:B:171:LYS:HA	1:B:171:LYS:HE2	1.65	0.78
1:B:52:LYS:H	1:B:52:LYS:CD	1.93	0.75
1:A:41:LYS:NZ	4:A:515:HOH:O	2.22	0.73
1:A:52:LYS:HD2	1:A:52:LYS:N	2.05	0.72
1:A:69:MET:CE	1:A:88:ARG:HD2	2.21	0.69
1:A:40:GLY:HA3	4:A:509:HOH:O	1.94	0.67
1:A:59:TYR:HD1	1:A:68:PHE:CE2	2.17	0.63
1:A:69:MET:HE1	1:A:88:ARG:HD2	1.82	0.62
1:B:173:ASN:O	1:B:173:ASN:ND2	2.35	0.60
1:B:124:HIS:CD2	1:B:126:ASP:OD1	2.55	0.59
1:A:171:LYS:HA	1:A:171:LYS:NZ	2.17	0.58
1:B:95:ARG:NH1	2:B:185:SO4:S	2.76	0.58
1:B:171:LYS:HA	1:B:171:LYS:CE	2.33	0.58
1:A:118:ASP:OD2	1:A:120:ASP:HB3	2.04	0.56
1:A:59:TYR:HE1	1:A:68:PHE:HE2	1.48	0.56
1:B:52:LYS:N	1:B:52:LYS:HD2	2.18	0.56
1:A:40:GLY:CA	4:A:506:HOH:O	2.55	0.55
1:B:124:HIS:HD2	1:B:126:ASP:OD1	1.90	0.54
1:B:73:ALA:HA	1:B:85:TYR:O	2.09	0.53
1:A:58:ARG:HD3	3:A:500:FLU:O5	2.09	0.53
1:B:95:ARG:NH1	2:B:185:SO4:O4	2.42	0.52
1:A:28:GLU:OE2	3:A:500:FLU:O3	2.28	0.51
1:A:171:LYS:HA	1:A:171:LYS:CE	2.41	0.51
1:B:171:LYS:HE2	1:B:171:LYS:CA	2.40	0.50
1:A:93:TYR:OH	1:B:95:ARG:HD3	2.11	0.50
1:A:33:PRO:HD3	1:A:159:LYS:O	2.12	0.49
1:A:59:TYR:CD1	1:A:68:PHE:CD2	3.00	0.49
1:A:146:GLU:O	1:A:150:ILE:HB	2.12	0.48
1:B:58:ARG:HD3	3:B:501:FLU:O5	2.13	0.48
1:B:96:LYS:NZ	4:B:532:HOH:O	2.25	0.48
1:B:28:GLU:OE2	3:B:501:FLU:O3	2.31	0.47

*Continued on next page...*

Continued from previous page...

Atom-1	Atom-2	Distance(Å)	Clash(Å)
1:B:118:ASP:OD1	1:B:119:GLU:N	2.47	0.47
1:A:74:TYR:N	1:A:74:TYR:CD2	2.83	0.47
1:B:65:LYS:HG2	1:B:67:TYR:CZ	2.50	0.46
1:A:1:ASP:HA	1:A:126:ASP:O	2.15	0.46
1:A:38:LYS:HE2	1:A:67:TYR:CE2	2.51	0.46
1:B:152:SER:OG	1:B:154:VAL:HG22	2.17	0.45
1:A:32:TYR:HB2	1:A:127:HIS:CD2	2.50	0.45
1:B:118:ASP:OD1	1:B:120:ASP:N	2.43	0.45
1:B:35:PRO:O	1:B:36:ASN:HB2	2.18	0.44
1:B:55:LYS:HE3	1:B:55:LYS:HB2	1.73	0.43
1:A:40:GLY:HA2	4:A:506:HOH:O	2.18	0.43
1:A:81:ILE:CD1	1:A:81:ILE:N	2.82	0.43
1:A:172:VAL:O	1:A:173:ASN:HB3	2.19	0.43
1:A:173:ASN:O	1:A:173:ASN:CG	2.57	0.42
1:B:40:GLY:CA	4:B:519:HOH:O	2.67	0.42
1:B:107:LYS:HE2	1:B:107:LYS:HB2	1.71	0.42
1:B:40:GLY:HA2	4:B:519:HOH:O	2.21	0.41
1:A:171:LYS:HA	1:A:171:LYS:HZ1	1.85	0.41
1:A:69:MET:SD	1:A:88:ARG:HD2	2.61	0.41
1:B:58:ARG:CD	3:B:501:FLU:O5	2.69	0.41
1:B:32:TYR:HB2	1:B:127:HIS:CD2	2.56	0.41
1:B:65:LYS:HG2	1:B:67:TYR:CE1	2.56	0.40

There are no symmetry-related clashes.

## 5.3 Torsion angles

### 5.3.1 Protein backbone ⓘ

In the following table, the Percentiles column shows the percent Ramachandran outliers of the chain as a percentile score with respect to all X-ray entries followed by that with respect to entries of similar resolution. The Analysed column shows the number of residues for which the backbone conformation was analysed, and the total number of residues.

Mol	Chain	Analysed	Favoured	Allowed	Outliers	Percentiles	
1	A	171/184 (93%)	166 (97%)	5 (3%)	0	100	100
1	B	171/184 (93%)	166 (97%)	5 (3%)	0	100	100
All	All	342/368 (93%)	332 (97%)	10 (3%)	0	100	100

There are no Ramachandran outliers to report.

### 5.3.2 Protein sidechains ⓘ

In the following table, the Percentiles column shows the percent sidechain outliers of the chain as a percentile score with respect to all X-ray entries followed by that with respect to entries of similar resolution. The Analysed column shows the number of residues for which the sidechain conformation was analysed, and the total number of residues.

Mol	Chain	Analysed	Rotameric	Outliers	Percentiles	
1	A	149/160 (93%)	134 (90%)	15 (10%)	11	6
1	B	149/160 (93%)	134 (90%)	15 (10%)	11	6
All	All	298/320 (93%)	268 (90%)	30 (10%)	11	6

All (30) residues with a non-rotameric sidechain are listed below:

Mol	Chain	Res	Type
1	A	11	VAL
1	A	12	LYS
1	A	22	TYR
1	A	38	LYS
1	A	52	LYS
1	A	60	ASP
1	A	65	LYS
1	A	69	MET
1	A	81	ILE
1	A	107	LYS
1	A	126	ASP
1	A	150	ILE
1	A	171	LYS
1	A	172	VAL
1	A	173	ASN
1	B	38	LYS
1	B	52	LYS
1	B	60	ASP
1	B	69	MET
1	B	78	ASP
1	B	107	LYS
1	B	119	GLU
1	B	120	ASP
1	B	121	LYS
1	B	126	ASP
1	B	150	ILE
1	B	158	GLN
1	B	171	LYS
1	B	172	VAL

*Continued on next page...*

*Continued from previous page...*

Mol	Chain	Res	Type
1	B	173	ASN

Some sidechains can be flipped to improve hydrogen bonding and reduce clashes. All (7) such sidechains are listed below:

Mol	Chain	Res	Type
1	A	127	HIS
1	A	147	ASN
1	A	173	ASN
1	B	36	ASN
1	B	124	HIS
1	B	127	HIS
1	B	147	ASN

### 5.3.3 RNA ⓘ

There are no RNA chains in this entry.

## 5.4 Non-standard residues in protein, DNA, RNA chains ⓘ

There are no non-standard protein/DNA/RNA residues in this entry.

## 5.5 Carbohydrates ⓘ

There are no carbohydrates in this entry.

## 5.6 Ligand geometry ⓘ

3 ligands are modelled in this entry.

In the following table, the Counts columns list the number of bonds (or angles) for which Mogul statistics could be retrieved, the number of bonds (or angles) that are observed in the model and the number of bonds (or angles) that are defined in the chemical component dictionary. The Link column lists molecule types, if any, to which the group is linked. The Z score for a bond length (or angle) is the number of standard deviations the observed value is removed from the expected value. A bond length (or angle) with  $|Z| > 2$  is considered an outlier worth inspection. RMSZ is the root-mean-square of all Z scores of the bond lengths (or angles).

Mol	Type	Chain	Res	Link	Bond lengths			Bond angles		
					Counts	RMSZ	$\# Z  > 2$	Counts	RMSZ	$\# Z  > 2$
3	FLU	A	500	-	28,28,28	2.03	9 (32%)	38,41,41	1.85	5 (13%)

Mol	Type	Chain	Res	Link	Bond lengths			Bond angles		
					Counts	RMSZ	# Z  > 2	Counts	RMSZ	# Z  > 2
2	SO4	B	185	-	4,4,4	0.27	0	6,6,6	0.31	0
3	FLU	B	501	-	28,28,28	2.00	8 (28%)	38,41,41	1.50	4 (10%)

In the following table, the Chirals column lists the number of chiral outliers, the number of chiral centers analysed, the number of these observed in the model and the number defined in the chemical component dictionary. Similar counts are reported in the Torsion and Rings columns. '-' means no outliers of that kind were identified.

Mol	Type	Chain	Res	Link	Chirals	Torsions	Rings
3	FLU	A	500	-	-	0/8/12/12	0/1/4/4
2	SO4	B	185	-	-	0/0/0/0	0/0/0/0
3	FLU	B	501	-	-	0/8/12/12	0/1/4/4

All (17) bond length outliers are listed below:

Mol	Chain	Res	Type	Atoms	Z	Observed(Å)	Ideal(Å)
3	A	500	FLU	O3-C6	5.61	1.32	1.23
3	B	501	FLU	O3-C6	5.06	1.31	1.23
3	B	501	FLU	C9-C4	-4.32	1.41	1.49
3	A	500	FLU	O1-C1	-4.28	1.26	1.37
3	A	500	FLU	C9-C4	-4.17	1.41	1.49
3	B	501	FLU	O2-C4	3.67	1.39	1.34
3	B	501	FLU	O1-C1	-3.54	1.28	1.37
3	B	501	FLU	C9-C10	3.20	1.44	1.38
3	A	500	FLU	C9-C10	2.99	1.43	1.38
3	A	500	FLU	C10-C11	-2.72	1.38	1.43
3	A	500	FLU	C13-C1	2.52	1.44	1.38
3	B	501	FLU	C7-C6	2.40	1.43	1.38
3	B	501	FLU	C10-C11	-2.16	1.39	1.43
3	A	500	FLU	C7-C6	2.12	1.42	1.38
3	A	500	FLU	O5-C20	-2.12	1.23	1.30
3	B	501	FLU	C13-C1	2.07	1.43	1.38
3	A	500	FLU	O2-C4	2.05	1.37	1.34

All (9) bond angle outliers are listed below:

Mol	Chain	Res	Type	Atoms	Z	Observed(°)	Ideal(°)
3	A	500	FLU	C5-C4-C9	6.45	125.29	118.46
3	B	501	FLU	C5-C4-C9	5.97	124.78	118.46
3	A	500	FLU	C4-O2-C3	-5.19	120.00	122.04
3	A	500	FLU	C8-C7-C6	4.15	122.72	119.28
3	A	500	FLU	C8-C9-C4	-4.06	115.06	121.41

*Continued on next page...*

*Continued from previous page...*

Mol	Chain	Res	Type	Atoms	Z	Observed(°)	Ideal(°)
3	B	501	FLU	C8-C9-C4	-3.52	115.91	121.41
3	B	501	FLU	C8-C7-C6	2.24	121.13	119.28
3	B	501	FLU	C15-C14-C19	2.17	120.50	117.95
3	A	500	FLU	C7-C6-C5	-2.09	117.48	120.48

There are no chirality outliers.

There are no torsion outliers.

There are no ring outliers.

## 5.7 Other polymers ⓘ

There are no such residues in this entry.

## 5.8 Polymer linkage issues

There are no chain breaks in this entry.



## 6 Fit of model and data ⓘ

### 6.1 Protein, DNA and RNA chains ⓘ

In the following table, the column labelled ‘#RSRZ> 2’ contains the number (and percentage) of RSRZ outliers, followed by percent RSRZ outliers for the chain as percentile scores relative to all X-ray entries and entries of similar resolution. The OWAB column contains the minimum, median, 95<sup>th</sup> percentile and maximum values of the occupancy-weighted average B-factor per residue. The column labelled ‘Q< 0.9’ lists the number of (and percentage) of residues with an average occupancy less than 0.9.

Mol	Chain	Analysed	<RSRZ>	#RSRZ>2	OWAB(Å <sup>2</sup> )	Q<0.9
1	A	173/184 (94%)	-0.11	3 (1%) 67 67	18, 33, 51, 70	0
1	B	173/184 (94%)	-0.18	2 (1%) 75 76	15, 32, 53, 69	0
All	All	346/368 (94%)	-0.14	5 (1%) 72 72	15, 33, 52, 70	0

All (5) RSRZ outliers are listed below:

Mol	Chain	Res	Type	RSRZ
1	A	173	ASN	4.2
1	B	150	ILE	2.5
1	B	173	ASN	2.4
1	A	59	TYR	2.4
1	A	172	VAL	2.3

### 6.2 Non-standard residues in protein, DNA, RNA chains ⓘ

There are no non-standard protein/DNA/RNA residues in this entry.

### 6.3 Carbohydrates ⓘ

There are no carbohydrates in this entry.

### 6.4 Ligands ⓘ

In the following table, the Atoms column lists the number of modelled atoms in the group and the number defined in the chemical component dictionary. LLDF column lists the quality of electron density of the group with respect to its neighbouring residues in protein, DNA or RNA chains. The B-factors column lists the minimum, median, 95<sup>th</sup> percentile and maximum values of B factors of atoms in the group. The column labelled ‘Q< 0.9’ lists the number of atoms with occupancy less than 0.9.

Mol	Type	Chain	Res	Atoms	RSR	LLDF	B-factors( $\text{\AA}^2$ )	Q<0.9
2	SO4	B	185	5/5	0.33	6.78	40,40,41,42	5
3	FLU	A	500	25/25	0.15	0.71	17,20,23,24	0
3	FLU	B	501	25/25	0.12	-0.12	15,18,23,25	0

## 6.5 Other polymers ⓘ

There are no such residues in this entry.