



Full wwPDB X-ray Structure Validation Report

Feb 27, 2014 – 04:13 PM GMT

PDB ID : 1N2C
Title : NITROGENASE COMPLEX FROM AZOTOBACTER VINELANDII STABILIZED BY ADP-TETRAFLUOROALUMINATE
Authors : Schindelin, H.; Kisker, C.; Rees, D.C.
Deposited on : 1997-05-02
Resolution : 3.00 Å(reported)

This is a full wwPDB validation report for a publicly released PDB entry.
We welcome your comments at validation@mail.wwpdb.org
A user guide is available at <http://wwpdb.org/ValidationPDFNotes.html>

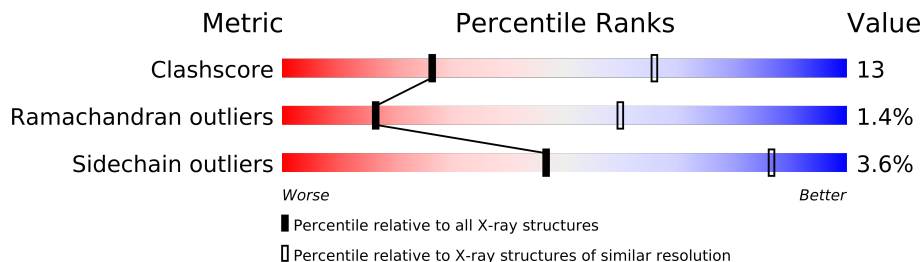
The following versions of software and data (see [references](#)) were used in the production of this report:

MolProbity : 4.02b-467
Mogul : 1.15 2013
Xtriage (Phenix) : **NOT EXECUTED**
EDS : **NOT EXECUTED**
Percentile statistics : 21963
Ideal geometry (proteins) : Engh & Huber (2001)
Ideal geometry (DNA, RNA) : Parkinson et. al. (1996)
Validation Pipeline (wwPDB-VP) : stable22683

1 Overall quality at a glance

The reported resolution of this entry is 3.00 Å.

Percentile scores (ranging between 0-100) for global validation metrics of the entry are shown in the following graphic. The table shows the number of entries on which the scores are based.



Metric	Whole archive (#Entries)	Similar resolution (#Entries, resolution range(Å))
Clashscore	79885	1594 (3.00-3.00)
Ramachandran outliers	78287	1537 (3.00-3.00)
Sidechain outliers	78261	1540 (3.00-3.00)

The table below summarises the geometric issues observed across the polymeric chains and their fit to the electron density. The red, orange, yellow and green segments on the lower bar indicate the fraction of residues that contain outliers for ≥ 3 , 2, 1 and 0 types of geometric quality criteria. The upper red bar (where present) indicates the fraction of residues that have poor fit to the electron density.

Note EDS was not executed.

Mol	Chain	Length	Quality of chain
1	A	491	
1	C	491	
2	B	522	
2	D	522	
3	E	289	
3	F	289	
3	G	289	
3	H	289	

2 Entry composition

There are 11 unique types of molecules in this entry. The entry contains 24426 atoms, of which 0 are hydrogen and 0 are deuterium.

In the tables below, the ZeroOcc column contains the number of atoms modelled with zero occupancy, the AltConf column contains the number of residues with at least one atom in alternate conformation and the Trace column contains the number of residues modelled with at most 2 atoms.

- Molecule 1 is a protein called NITROGENASE MOLYBDENUM-IRON PROTEIN.

Mol	Chain	Residues	Atoms					ZeroOcc	AltConf	Trace
1	A	478	Total	C	N	O	S	0	0	0
			3792	2411	647	710	24			
1	C	478	Total	C	N	O	S	0	0	0
			3792	2411	647	710	24			

- Molecule 2 is a protein called NITROGENASE MOLYBDENUM-IRON PROTEIN.

Mol	Chain	Residues	Atoms					ZeroOcc	AltConf	Trace
2	B	522	Total	C	N	O	S	0	0	0
			4170	2663	704	775	28			
2	D	522	Total	C	N	O	S	0	0	0
			4170	2663	704	775	28			

- Molecule 3 is a protein called NITROGENASE IRON PROTEIN.

Mol	Chain	Residues	Atoms					ZeroOcc	AltConf	Trace
3	E	274	Total	C	N	O	S	0	0	0
			2065	1291	352	401	21			
3	F	274	Total	C	N	O	S	0	0	0
			2065	1291	352	401	21			
3	G	274	Total	C	N	O	S	0	0	0
			2065	1291	352	401	21			
3	H	274	Total	C	N	O	S	0	0	0
			2065	1291	352	401	21			

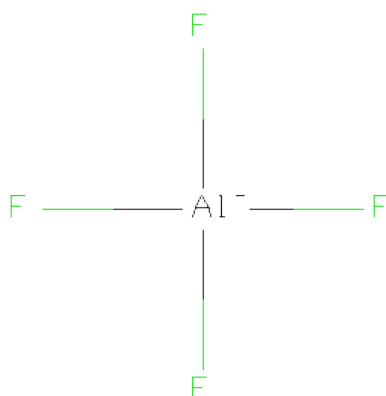
- Molecule 4 is CALCIUM ION (three-letter code: CA) (formula: Ca).

Mol	Chain	Residues	Atoms		ZeroOcc	AltConf
4	B	1	Total	Ca	0	0
			1	1		
4	D	1	Total	Ca	0	0
			1	1		

- Molecule 5 is MAGNESIUM ION (three-letter code: MG) (formula: Mg).

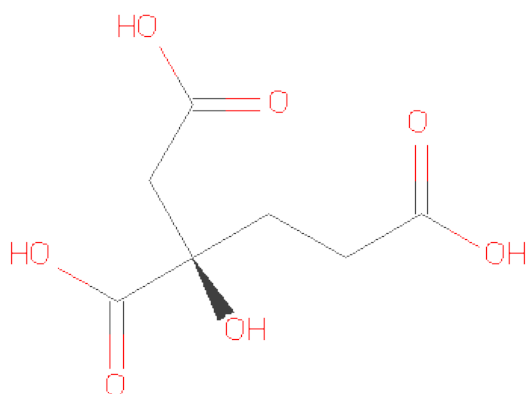
Mol	Chain	Residues	Atoms		ZeroOcc	AltConf
5	H	1	Total	Mg	0	0
			1	1		
5	G	1	Total	Mg	0	0
			1	1		
5	F	1	Total	Mg	0	0
			1	1		
5	E	1	Total	Mg	0	0
			1	1		

- Molecule 6 is TETRAFLUOROALUMINATE ION (three-letter code: ALF) (formula: AlF_4).



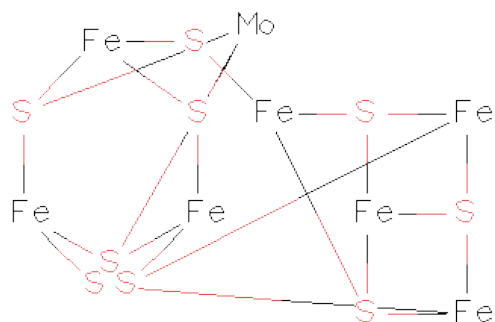
Mol	Chain	Residues	Atoms			ZeroOcc	AltConf
6	E	1	Total	Al	F	0	0
			5	1	4		
6	F	1	Total	Al	F	0	0
			5	1	4		
6	G	1	Total	Al	F	0	0
			5	1	4		
6	H	1	Total	Al	F	0	0
			5	1	4		

- Molecule 7 is 3-HYDROXY-3-CARBOXY-ADIPIACID (three-letter code: HCA) (formula: $\text{C}_7\text{H}_{10}\text{O}_7$).



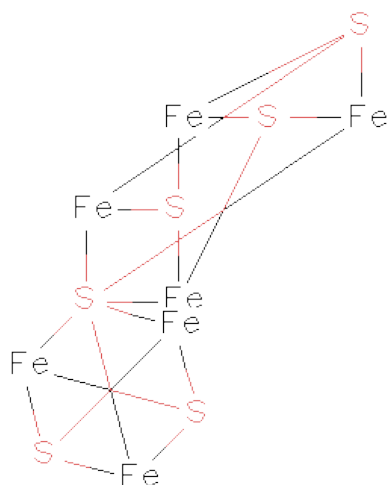
Mol	Chain	Residues	Atoms			ZeroOcc	AltConf
7	A	1	Total	C	O	0	0
			14	7	7		
7	C	1	Total	C	O	0	0
			14	7	7		

- Molecule 8 is FE-MO-S CLUSTER (three-letter code: CFM) (formula: Fe_7MoS_9).



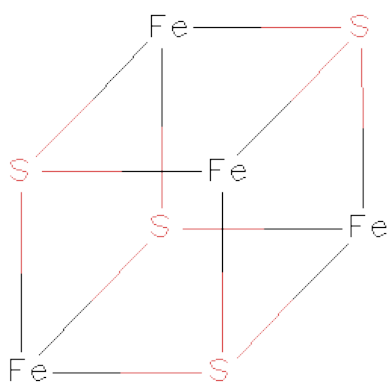
Mol	Chain	Residues	Atoms				ZeroOcc	AltConf
8	A	1	Total	Fe	Mo	S	0	0
			17	7	1	9		
8	C	1	Total	Fe	Mo	S	0	0
			17	7	1	9		

- Molecule 9 is FE(8)-S(7) CLUSTER (three-letter code: CLF) (formula: Fe_8S_7).



Mol	Chain	Residues	Atoms			ZeroOcc	AltConf
9	B	1	Total	Fe	S	0	0
			15	8	7		
9	D	1	Total	Fe	S	0	0
			15	8	7		

- Molecule 10 is IRON/SULFUR CLUSTER (three-letter code: SF4) (formula: Fe_4S_4).



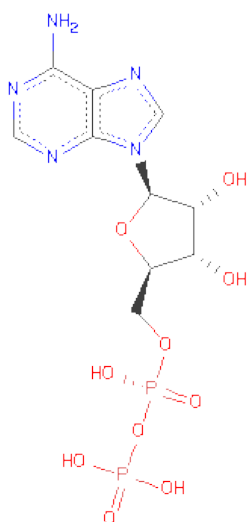
Mol	Chain	Residues	Atoms			ZeroOcc	AltConf
10	F	1	Total	Fe	S	0	0
			8	4	4		

Continued on next page...

Continued from previous page...

Mol	Chain	Residues	Atoms			ZeroOcc	AltConf
10	G	1	Total	Fe	S	0	0
			8	4	4		

- Molecule 11 is ADENOSINE-5'-DIPHOSPHATE (three-letter code: ADP) (formula: $C_{10}H_{15}N_5O_{10}P_2$).



Mol	Chain	Residues	Atoms					ZeroOcc	AltConf
11	E	1	Total	C	N	O	P	0	0
			27	10	5	10	2		
11	F	1	Total	C	N	O	P	0	0
			27	10	5	10	2		
11	G	1	Total	C	N	O	P	0	0
			27	10	5	10	2		
11	H	1	Total	C	N	O	P	0	0
			27	10	5	10	2		

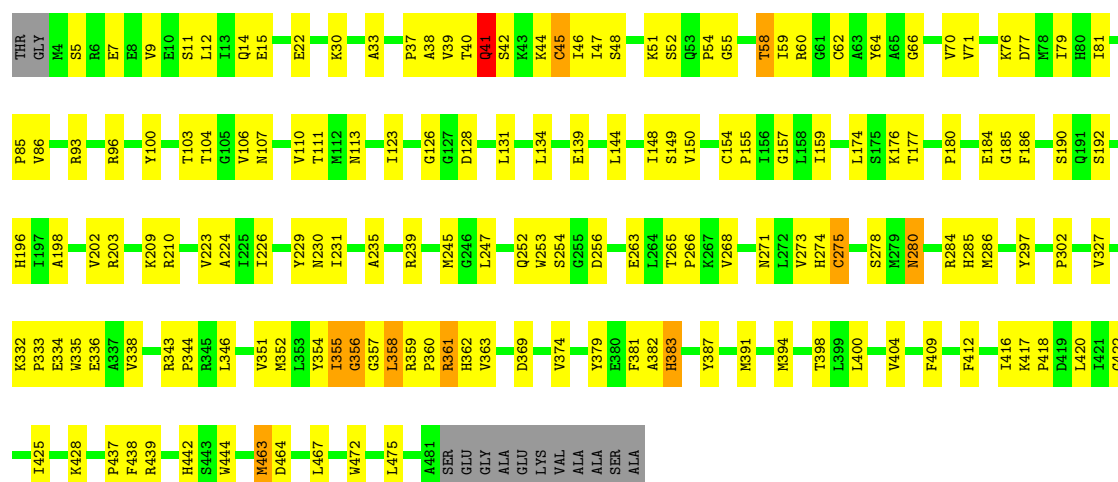
3 Residue-property plots

These plots are drawn for all protein, RNA and DNA chains in the entry. The first graphic for a chain summarises the proportions of errors displayed in the second graphic. The second graphic shows the sequence view annotated by issues in geometry and electron density. Residues are color-coded according to the number of geometric quality criteria for which they contain at least one outlier: green = 0, yellow = 1, orange = 2 and red = 3 or more. A red dot above a residue indicates a poor fit to the electron density ($RSRZ > 2$). Stretches of 2 or more consecutive residues without any outlier are shown as a green connector. Residues present in the sample, but not in the model, are shown in grey.

Note EDS was not executed.

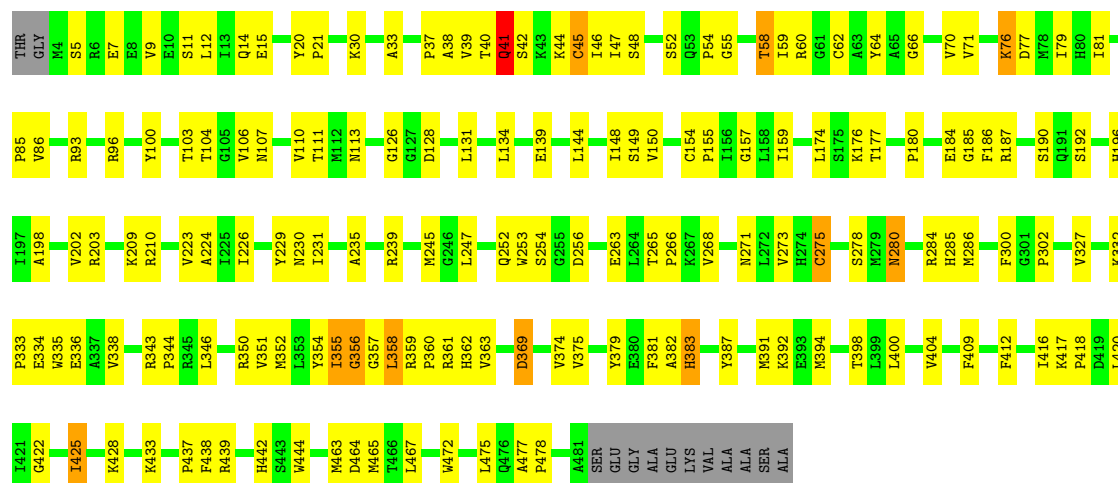
• Molecule 1: NITROGENASE MOLYBDENUM-IRON PROTEIN

Chain A: 

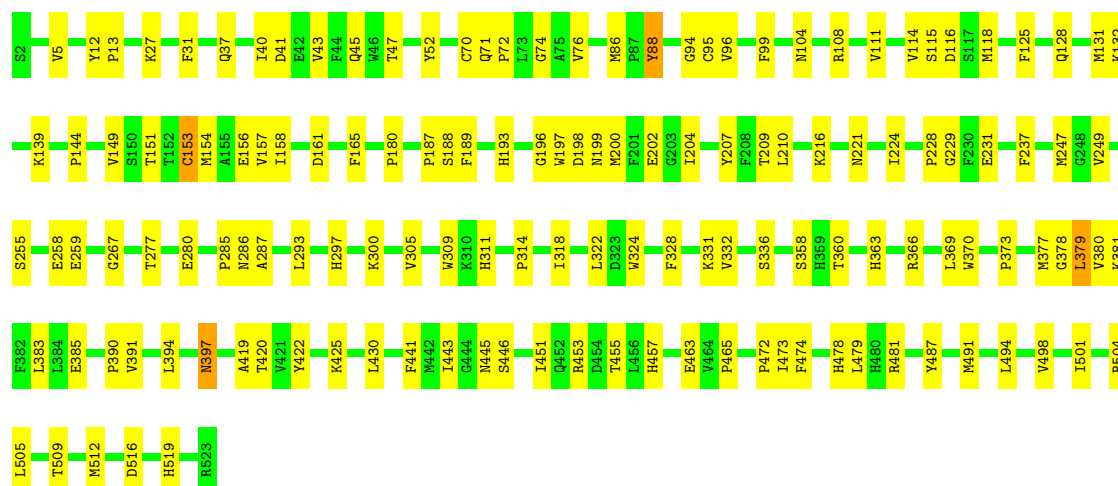


• Molecule 1: NITROGENASE MOLYBDENUM-IRON PROTEIN

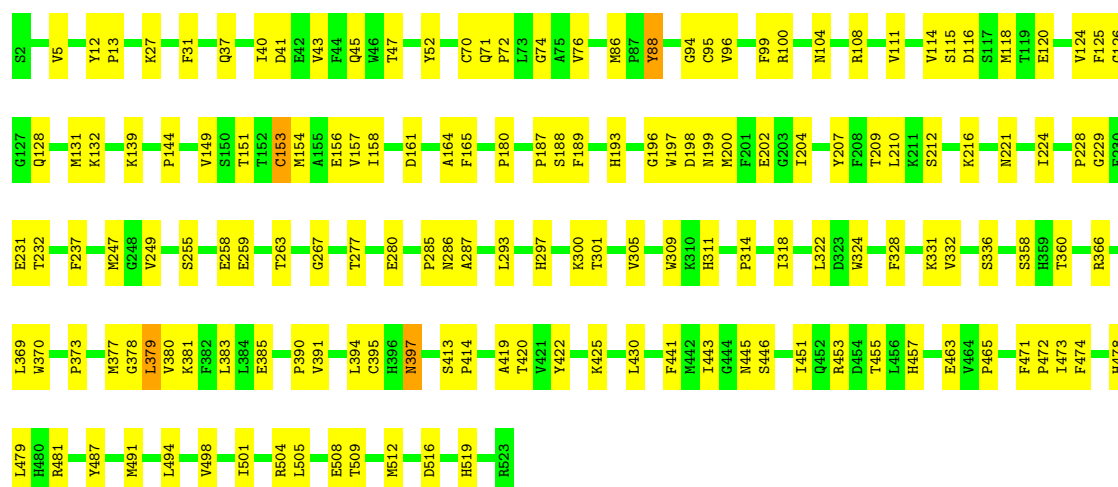
Chain C: 



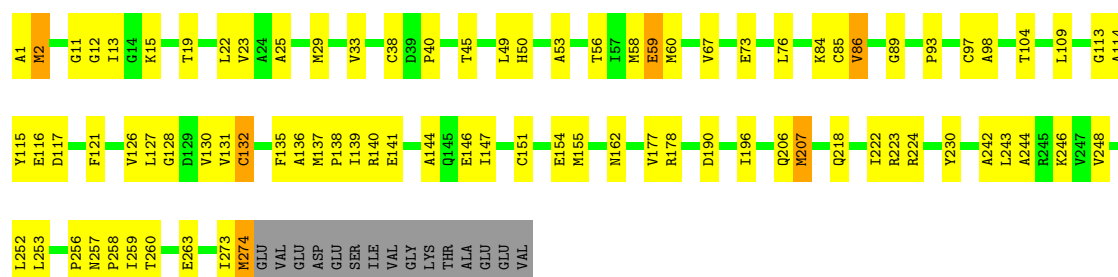
• Molecule 2: NITROGENASE MOLYBDENUM-IRON PROTEIN

Chain B: 

- Molecule 2: NITROGENASE MOLYBDENUM-IRON PROTEIN

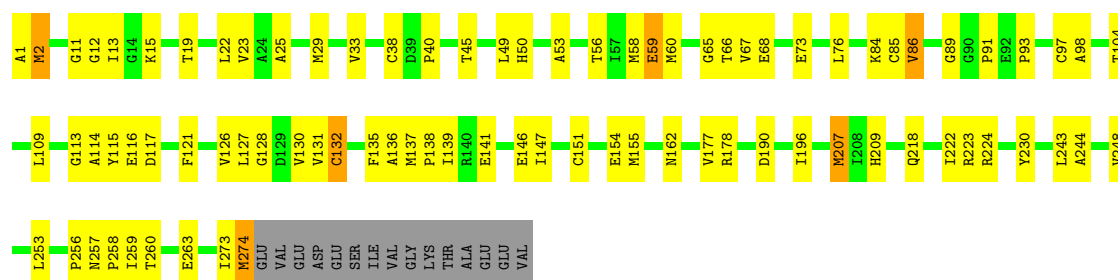
Chain D: 

- Molecule 3: NITROGENASE IRON PROTEIN

Chain E: 

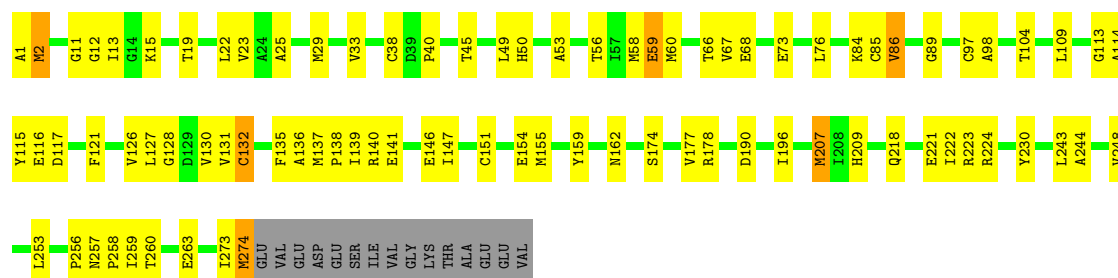
- Molecule 3: NITROGENASE IRON PROTEIN

Chain F: 



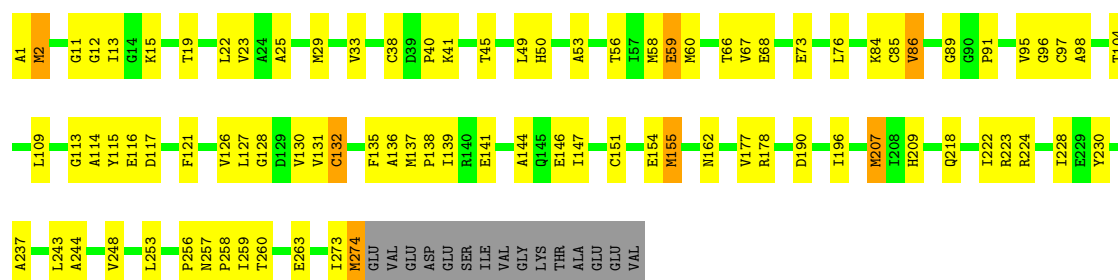
• Molecule 3: NITROGENASE IRON PROTEIN

Chain G:



• Molecule 3: NITROGENASE IRON PROTEIN

Chain H:



4 Data and refinement statistics

Xtriage (Phenix) and EDS were not executed - this section will therefore be incomplete.

Property	Value	Source
Space group	C 2 2 21	Depositor
Cell constants a, b, c, α , β , γ	79.00Å 299.70Å 334.50Å 90.00° 90.00° 90.00°	Depositor
Resolution (Å)	50.00 – 3.00	Depositor
% Data completeness (in resolution range)	0.7 (50.00-3.00)	Depositor
R_{merge}	(Not available)	Depositor
R_{sym}	0.10	Depositor
Refinement program	X-PLOR 3.1	Depositor
R, R_{free}	0.208 , 0.238	Depositor
Estimated twinning fraction	No twinning to report.	Xtriage
Total number of atoms	24426	wwPDB-VP
Average B, all atoms (Å ²)	25.0	wwPDB-VP

5 Model quality

5.1 Standard geometry

Bond lengths and bond angles in the following residue types are not validated in this section: MG, CFM, ADP, ALF, CLF, HCA, CA, SF4

The Z score for a bond length (or angle) is the number of standard deviations the observed value is removed from the expected value. A bond length (or angle) with $|Z| > 5$ is considered an outlier worth inspection. RMSZ is the root-mean-square of all Z scores of the bond lengths (or angles).

Mol	Chain	Bond lengths		Bond angles	
		RMSZ	# $ Z > 5$	RMSZ	# $ Z > 5$
1	A	0.32	0/3880	0.59	1/5233 (0.0%)
1	C	0.32	0/3880	0.59	1/5233 (0.0%)
2	B	0.32	0/4276	0.55	0/5782
2	D	0.32	0/4276	0.55	0/5782
3	E	0.31	0/2089	0.57	0/2815
3	F	0.30	0/2089	0.57	0/2815
3	G	0.31	0/2089	0.57	0/2815
3	H	0.30	0/2089	0.57	0/2815
All	All	0.32	0/24668	0.57	2/33290 (0.0%)

There are no bond length outliers.

All (2) bond angle outliers are listed below:

Mol	Chain	Res	Type	Atoms	Z	Observed(°)	Ideal(°)
1	C	275	CYS	CA-CB-SG	-6.21	102.83	114.00
1	A	275	CYS	CA-CB-SG	-6.00	103.20	114.00

There are no chirality outliers.

There are no planarity outliers.

5.2 Close contacts

In the following table, the Non-H and H(model) columns list the number of non-hydrogen atoms and hydrogen atoms in the chain respectively. The H(added) column lists the number of hydrogens added by MolProbity. The Clashes column lists the number of clashes within the asymmetric unit, and the number in parentheses is this value normalized per 1000 atoms of the molecule in the chain. The Symm-Clashes column gives symmetry related clashes, in the same way as for the Clashes column.

Mol	Chain	Non-H	H(model)	H(added)	Clashes	Symm-Clashes
1	A	3792	0	3727	122	0
1	C	3792	0	3727	127	0
2	B	4170	0	4076	107	0
2	D	4170	0	4076	115	0
3	E	2065	0	2077	55	0
3	F	2065	0	2077	58	0
3	G	2065	0	2077	58	0
3	H	2065	0	2077	58	0
4	B	1	0	0	0	0
4	D	1	0	0	0	0
5	E	1	0	0	0	0
5	F	1	0	0	0	0
5	G	1	0	0	0	0
5	H	1	0	0	0	0
6	E	5	0	0	0	0
6	F	5	0	0	0	0
6	G	5	0	0	0	0
6	H	5	0	0	0	0
7	A	14	0	6	1	0
7	C	14	0	6	1	0
8	A	17	0	0	6	0
8	C	17	0	0	7	0
9	B	15	0	0	4	0
9	D	15	0	0	4	0
10	F	8	0	0	0	0
10	G	8	0	0	0	0
11	E	27	0	12	2	0
11	F	27	0	12	2	0
11	G	27	0	12	2	0
11	H	27	0	12	2	0
All	All	24426	0	23974	637	0

Clashscore is defined as the number of clashes calculated for the entry per 1000 atoms (including hydrogens) of the entry. The overall clashscore for this entry is 13.

All (637) close contacts within the same asymmetric unit are listed below.

Atom-1	Atom-2	Distance(Å)	Clash(Å)
2:B:158:ILE:HG22	3:F:97:CYS:HB2	1.48	0.93
1:C:275:CYS:HA	1:C:358:LEU:HD22	1.62	0.81
1:A:275:CYS:HA	1:A:358:LEU:HD22	1.62	0.80
3:E:136:ALA:O	3:E:139:ILE:HG22	1.84	0.78
2:B:125:PHE:HA	3:F:91:PRO:HB3	1.65	0.78
3:G:136:ALA:O	3:G:139:ILE:HG22	1.84	0.78

Continued on next page...

Continued from previous page...

Atom-1	Atom-2	Distance(Å)	Clash(Å)
2:D:96:VAL:HG21	2:D:115:SER:HB2	1.66	0.78
2:B:96:VAL:HG21	2:B:115:SER:HB2	1.67	0.77
3:F:136:ALA:O	3:F:139:ILE:HG22	1.85	0.77
2:D:158:ILE:HG22	3:H:97:CYS:HB2	1.66	0.76
3:H:136:ALA:O	3:H:139:ILE:HG22	1.85	0.75
3:G:58:MET:HB2	3:G:89:GLY:HA3	1.70	0.74
2:B:216:LYS:HG2	2:B:285:PRO:HB2	1.69	0.74
1:A:226:ILE:HD11	1:A:273:VAL:HG22	1.69	0.74
3:F:58:MET:HB2	3:F:89:GLY:HA3	1.68	0.73
3:H:58:MET:HB2	3:H:89:GLY:HA3	1.69	0.73
1:C:39:VAL:HG11	1:C:44:LYS:HB2	1.71	0.73
2:D:216:LYS:HG2	2:D:285:PRO:HB2	1.69	0.73
2:D:128:GLN:HG2	2:D:132:LYS:HE3	1.71	0.73
2:B:128:GLN:HG2	2:B:132:LYS:HE3	1.71	0.72
3:G:131:VAL:HB	3:H:98:ALA:HB3	1.72	0.72
2:D:188:SER:HB3	9:D:525:CLF:S2B	2.29	0.72
1:A:39:VAL:HG11	1:A:44:LYS:HB2	1.71	0.72
1:C:226:ILE:HD11	1:C:273:VAL:HG22	1.71	0.72
2:D:125:PHE:HA	3:H:91:PRO:HB3	1.69	0.72
3:E:13:ILE:HG12	3:E:151:CYS:HA	1.71	0.71
3:G:13:ILE:HG12	3:G:151:CYS:HA	1.73	0.71
2:B:209:THR:HG21	2:B:309:TRP:HE1	1.54	0.71
2:D:209:THR:HG21	2:D:309:TRP:HE1	1.55	0.71
1:A:239:ARG:HD2	1:A:252:GLN:HE21	1.56	0.70
3:E:58:MET:HB2	3:E:89:GLY:HA3	1.72	0.70
3:H:13:ILE:HG12	3:H:151:CYS:HA	1.72	0.70
1:C:150:VAL:HG22	1:C:180:PRO:HA	1.73	0.70
1:A:150:VAL:HG22	1:A:180:PRO:HA	1.73	0.70
3:E:76:LEU:HD13	3:E:86:VAL:HG22	1.73	0.70
1:C:239:ARG:HD2	1:C:252:GLN:HE21	1.56	0.70
3:H:76:LEU:HD13	3:H:86:VAL:HG22	1.74	0.69
3:F:13:ILE:HG12	3:F:151:CYS:HA	1.72	0.69
2:B:209:THR:HG21	2:B:309:TRP:NE1	2.08	0.69
1:A:103:THR:HB	1:A:106:VAL:HG22	1.75	0.69
3:F:76:LEU:HD13	3:F:86:VAL:HG22	1.74	0.69
1:C:157:GLY:HA3	1:C:184:GLU:HG2	1.75	0.69
3:G:76:LEU:HD13	3:G:86:VAL:HG22	1.75	0.69
1:C:103:THR:HB	1:C:106:VAL:HG22	1.75	0.68
3:F:139:ILE:HG13	3:F:177:VAL:HG11	1.75	0.68
1:A:157:GLY:HA3	1:A:184:GLU:HG2	1.75	0.68
3:H:139:ILE:HG13	3:H:177:VAL:HG11	1.76	0.68
3:F:15:LYS:HG2	11:F:291:ADP:O2B	1.94	0.68

Continued on next page...

Continued from previous page...

Atom-1	Atom-2	Distance(Å)	Clash(Å)
1:C:192:SER:OG	1:C:383:HIS:HE1	1.78	0.67
2:B:221:ASN:OD1	2:B:287:ALA:HA	1.94	0.67
1:A:192:SER:OG	1:A:383:HIS:HE1	1.78	0.67
1:C:96:ARG:NH2	8:C:496:CFM:S5	2.67	0.67
3:E:139:ILE:HG13	3:E:177:VAL:HG11	1.76	0.67
2:B:188:SER:HB3	9:B:525:CLF:S2B	2.34	0.67
2:D:221:ASN:OD1	2:D:287:ALA:HA	1.95	0.67
1:A:224:ALA:HB2	1:A:268:VAL:HG11	1.77	0.67
1:A:52:SER:HB3	1:A:58:THR:HG21	1.75	0.67
2:D:209:THR:HG21	2:D:309:TRP:NE1	2.09	0.66
3:G:139:ILE:HG13	3:G:177:VAL:HG11	1.76	0.66
3:H:15:LYS:HG2	11:H:291:ADP:O2B	1.95	0.66
1:C:224:ALA:HB2	1:C:268:VAL:HG11	1.77	0.66
3:E:40:PRO:HG3	3:E:98:ALA:HB1	1.78	0.66
3:H:45:THR:HG21	3:H:85:CYS:HB3	1.77	0.66
3:G:15:LYS:HG2	11:G:291:ADP:O2B	1.95	0.66
3:G:45:THR:HG21	3:G:85:CYS:HB3	1.77	0.66
3:E:15:LYS:HG2	11:E:291:ADP:O2B	1.95	0.66
1:C:52:SER:HB3	1:C:58:THR:HG21	1.77	0.66
2:D:314:PRO:HB3	2:D:331:LYS:HE2	1.78	0.65
2:D:12:TYR:HB3	2:D:13:PRO:HD3	1.78	0.65
3:F:40:PRO:HG3	3:F:98:ALA:HB1	1.79	0.65
1:A:96:ARG:NH2	8:A:496:CFM:S5	2.69	0.65
3:F:45:THR:HG21	3:F:85:CYS:HB3	1.77	0.65
3:E:131:VAL:HB	3:F:98:ALA:HB3	1.78	0.65
1:C:346:LEU:HD22	1:C:467:LEU:HD23	1.79	0.65
1:A:239:ARG:HD2	1:A:252:GLN:NE2	2.12	0.65
1:C:224:ALA:HB3	1:C:271:ASN:ND2	2.12	0.65
1:C:442:HIS:HE1	8:C:496:CFM:S1B	2.19	0.65
3:E:45:THR:HG21	3:E:85:CYS:HB3	1.78	0.65
1:C:230:ASN:HA	1:C:235:ALA:H	1.62	0.64
2:D:509:THR:O	2:D:516:ASP:HA	1.98	0.64
2:B:12:TYR:HB3	2:B:13:PRO:HD3	1.79	0.64
1:A:442:HIS:HE1	8:A:496:CFM:S1B	2.20	0.64
3:G:40:PRO:HG3	3:G:98:ALA:HB1	1.78	0.64
3:H:40:PRO:HG3	3:H:98:ALA:HB1	1.79	0.63
1:A:346:LEU:HD22	1:A:467:LEU:HD23	1.79	0.63
2:B:509:THR:O	2:B:516:ASP:HA	1.98	0.63
1:C:239:ARG:HD2	1:C:252:GLN:NE2	2.13	0.63
2:B:314:PRO:HB3	2:B:331:LYS:HE2	1.79	0.63
1:C:159:ILE:HG22	3:G:97:CYS:HB2	1.81	0.63
1:A:224:ALA:HB3	1:A:271:ASN:ND2	2.14	0.63

Continued on next page...

Continued from previous page...

Atom-1	Atom-2	Distance(Å)	Clash(Å)
11:G:291:ADP:O3'	3:H:154:GLU:HB3	1.99	0.63
1:C:229:TYR:CE2	8:C:496:CFM:S2A	2.92	0.62
2:B:216:LYS:HG3	2:B:286:ASN:OD1	2.00	0.62
1:A:229:TYR:CE2	8:A:496:CFM:S2A	2.93	0.62
1:A:230:ASN:HA	1:A:235:ALA:H	1.63	0.62
2:D:139:LYS:HA	2:D:144:PRO:HD2	1.81	0.62
2:B:366:ARG:HE	2:B:391:VAL:HG11	1.64	0.61
3:E:98:ALA:HB3	3:F:131:VAL:HB	1.82	0.61
2:D:216:LYS:HG3	2:D:286:ASN:OD1	1.99	0.61
11:E:291:ADP:O3'	3:F:154:GLU:HB3	2.01	0.61
1:A:62:CYS:HB2	1:A:185:GLY:HA2	1.82	0.61
1:A:154:CYS:HB2	1:A:155:PRO:HD3	1.82	0.61
2:B:139:LYS:HA	2:B:144:PRO:HD2	1.82	0.61
2:D:366:ARG:HE	2:D:391:VAL:HG11	1.65	0.60
3:G:154:GLU:HB3	11:H:291:ADP:O3'	2.01	0.60
1:C:192:SER:HB2	1:C:381:PHE:HB2	1.83	0.60
1:C:154:CYS:HB2	1:C:155:PRO:HD3	1.82	0.60
1:A:192:SER:HB2	1:A:381:PHE:HB2	1.82	0.59
1:C:265:THR:O	1:C:268:VAL:HG22	2.02	0.59
3:G:244:ALA:O	3:G:248:VAL:HG23	2.03	0.59
1:A:265:THR:O	1:A:268:VAL:HG22	2.03	0.59
2:D:96:VAL:CG2	2:D:115:SER:HB2	2.32	0.59
1:A:59:ILE:HD12	1:A:354:TYR:CE2	2.37	0.59
2:B:231:GLU:HB3	2:B:237:PHE:CZ	2.38	0.59
3:E:154:GLU:HB3	11:F:291:ADP:O3'	2.02	0.59
2:D:95:CYS:HB3	2:D:99:PHE:CZ	2.38	0.59
3:H:244:ALA:O	3:H:248:VAL:HG23	2.02	0.59
2:B:96:VAL:CG2	2:B:115:SER:HB2	2.33	0.58
1:A:332:LYS:O	1:A:336:GLU:HB2	2.03	0.58
3:F:244:ALA:O	3:F:248:VAL:HG23	2.03	0.58
1:C:59:ILE:HD12	1:C:354:TYR:CE2	2.37	0.58
2:B:71:GLN:HE22	2:B:199:ASN:ND2	2.00	0.58
1:C:62:CYS:HB2	1:C:185:GLY:HA2	1.84	0.58
2:D:71:GLN:HE22	2:D:199:ASN:ND2	2.01	0.58
1:A:355:ILE:HG22	1:A:356:GLY:H	1.68	0.58
1:A:357:GLY:HA2	1:A:379:TYR:HD2	1.68	0.58
1:C:355:ILE:HG22	1:C:356:GLY:H	1.68	0.58
3:G:12:GLY:HA3	3:H:11:GLY:O	2.04	0.57
1:C:357:GLY:HA2	1:C:379:TYR:HD2	1.69	0.57
2:B:370:TRP:HA	2:B:394:LEU:O	2.05	0.57
1:A:106:VAL:HG21	2:B:40:ILE:HG23	1.86	0.57
1:A:256:ASP:HB3	2:B:27:LYS:HE2	1.86	0.57

Continued on next page...

Continued from previous page...

Atom-1	Atom-2	Distance(Å)	Clash(Å)
2:D:224:ILE:HD11	2:D:336:SER:HB3	1.86	0.57
2:B:224:ILE:HD11	2:B:336:SER:HB3	1.86	0.57
1:A:359:ARG:O	1:A:363:VAL:HG22	2.04	0.57
3:G:98:ALA:HB3	3:H:131:VAL:HB	1.85	0.57
2:D:231:GLU:HB3	2:D:237:PHE:CZ	2.39	0.57
2:D:370:TRP:HA	2:D:394:LEU:O	2.04	0.57
1:C:85:PRO:HB2	9:D:525:CLF:S2B	2.44	0.57
3:E:244:ALA:O	3:E:248:VAL:HG23	2.04	0.57
1:C:332:LYS:O	1:C:336:GLU:HB2	2.04	0.56
1:C:106:VAL:HG21	2:D:40:ILE:HG23	1.86	0.56
1:A:85:PRO:HB2	9:B:525:CLF:S2B	2.45	0.56
1:A:52:SER:OG	1:A:60:ARG:HD2	2.06	0.56
2:B:95:CYS:HB3	2:B:99:PHE:CZ	2.40	0.56
1:A:60:ARG:HD3	1:A:190:SER:HB3	1.88	0.56
2:D:216:LYS:CG	2:D:285:PRO:HB2	2.36	0.56
3:E:178:ARG:HB2	3:E:253:LEU:HB3	1.88	0.56
1:C:192:SER:OG	1:C:383:HIS:CE1	2.58	0.56
1:C:60:ARG:HD3	1:C:190:SER:HB3	1.87	0.56
3:G:178:ARG:HB2	3:G:253:LEU:HB3	1.88	0.56
1:A:104:THR:HG21	1:A:111:THR:HB	1.88	0.56
3:F:178:ARG:HB2	3:F:253:LEU:HB3	1.87	0.56
1:A:192:SER:OG	1:A:383:HIS:CE1	2.58	0.56
1:C:52:SER:OG	1:C:60:ARG:HD2	2.06	0.56
1:C:394:MET:HG3	1:C:400:LEU:HD21	1.89	0.55
3:H:178:ARG:HB2	3:H:253:LEU:HB3	1.87	0.55
3:G:76:LEU:HD11	3:G:84:LYS:HB3	1.89	0.55
2:D:118:MET:HB2	2:D:154:MET:HE1	1.88	0.55
1:A:159:ILE:HG22	3:E:97:CYS:HB2	1.88	0.55
1:C:359:ARG:O	1:C:363:VAL:HG22	2.06	0.55
3:G:273:ILE:O	3:G:274:MET:HB2	2.07	0.55
2:D:161:ASP:OD2	3:G:140:ARG:HG2	2.06	0.55
1:A:155:PRO:HG3	2:B:153:CYS:HB2	1.89	0.55
1:C:155:PRO:HG3	2:D:153:CYS:HB2	1.87	0.55
2:D:478:HIS:O	2:D:481:ARG:HG3	2.07	0.54
2:B:478:HIS:O	2:B:481:ARG:HG3	2.06	0.54
2:D:277:THR:OG1	2:D:280:GLU:HG3	2.07	0.54
1:C:100:TYR:CE1	1:C:110:VAL:HB	2.42	0.54
1:C:104:THR:HG21	1:C:111:THR:HB	1.88	0.54
3:H:76:LEU:HD11	3:H:84:LYS:HB3	1.90	0.54
3:F:273:ILE:O	3:F:274:MET:HB2	2.08	0.54
3:H:273:ILE:O	3:H:274:MET:HB2	2.08	0.54
1:A:100:TYR:CE1	1:A:110:VAL:HB	2.43	0.54

Continued on next page...

Continued from previous page...

Atom-1	Atom-2	Distance(Å)	Clash(Å)
1:C:256:ASP:HB3	2:D:27:LYS:HE2	1.90	0.54
1:C:346:LEU:HD21	1:C:464:ASP:HA	1.90	0.53
2:B:369:LEU:HD22	2:B:379:LEU:HD13	1.90	0.53
1:A:346:LEU:HD21	1:A:464:ASP:HA	1.89	0.53
2:B:277:THR:OG1	2:B:280:GLU:HG3	2.09	0.53
2:B:216:LYS:CG	2:B:285:PRO:HB2	2.36	0.53
1:C:239:ARG:HH11	1:C:252:GLN:HE21	1.57	0.53
2:D:164:ALA:HA	3:G:174:SER:HB2	1.91	0.53
1:A:198:ALA:O	1:A:202:VAL:HG23	2.09	0.53
2:D:72:PRO:HG3	9:D:525:CLF:S3B	2.49	0.53
3:F:76:LEU:HD11	3:F:84:LYS:HB3	1.89	0.53
2:B:118:MET:HB2	2:B:154:MET:HE1	1.89	0.53
1:C:198:ALA:O	1:C:202:VAL:HG23	2.08	0.53
2:B:379:LEU:HD11	2:B:443:ILE:HG21	1.91	0.53
2:D:202:GLU:HG3	2:D:300:LYS:HG2	1.91	0.53
1:A:46:ILE:O	1:A:46:ILE:HG23	2.09	0.53
1:C:346:LEU:CD2	1:C:467:LEU:HD23	2.38	0.53
1:A:346:LEU:CD2	1:A:467:LEU:HD23	2.39	0.53
1:C:70:VAL:HG11	8:C:496:CFM:S2B	2.48	0.53
1:A:55:GLY:HA2	2:B:114:VAL:HG11	1.90	0.52
1:A:394:MET:HG3	1:A:400:LEU:HD21	1.89	0.52
3:E:76:LEU:HD11	3:E:84:LYS:HB3	1.90	0.52
2:B:358:SER:OG	2:D:478:HIS:HE1	1.92	0.52
2:D:379:LEU:HD11	2:D:443:ILE:HG21	1.90	0.52
3:E:196:ILE:HB	3:E:207:MET:HE3	1.91	0.52
1:C:33:ALA:HB2	1:C:45:CYS:O	2.09	0.52
1:A:354:TYR:CZ	1:A:404:VAL:HG12	2.45	0.52
1:A:40:THR:O	1:A:41:GLN:HB2	2.09	0.52
3:H:196:ILE:HB	3:H:207:MET:HE3	1.92	0.52
1:A:239:ARG:HH11	1:A:252:GLN:HE21	1.55	0.52
1:A:226:ILE:HA	1:A:253:TRP:HB2	1.92	0.52
2:D:247:MET:HB2	2:D:249:VAL:HG23	1.92	0.52
1:A:70:VAL:HG11	8:A:496:CFM:S2B	2.50	0.52
2:B:445:ASN:HB2	2:B:472:PRO:O	2.10	0.52
1:A:33:ALA:HB2	1:A:45:CYS:O	2.09	0.52
2:B:202:GLU:HG3	2:B:300:LYS:HG2	1.91	0.52
2:D:369:LEU:HD22	2:D:379:LEU:HD13	1.91	0.51
2:B:247:MET:HB2	2:B:249:VAL:HG23	1.92	0.51
1:C:46:ILE:HG23	1:C:46:ILE:O	2.09	0.51
2:D:108:ARG:HH11	2:D:108:ARG:HG3	1.75	0.51
1:C:40:THR:O	1:C:41:GLN:HB2	2.10	0.51
3:E:273:ILE:O	3:E:274:MET:HB2	2.08	0.51

Continued on next page...

Continued from previous page...

Atom-1	Atom-2	Distance(Å)	Clash(Å)
3:F:196:ILE:HB	3:F:207:MET:HE3	1.93	0.51
3:H:11:GLY:HA2	3:H:128:GLY:HA3	1.93	0.51
2:B:156:GLU:HG3	2:B:187:PRO:HA	1.93	0.51
1:A:51:LYS:HE3	3:F:65:GLY:HA2	1.93	0.51
2:D:156:GLU:HG3	2:D:187:PRO:HA	1.93	0.51
3:G:11:GLY:HA2	3:G:128:GLY:HA3	1.93	0.50
1:A:103:THR:HB	1:A:106:VAL:CG2	2.40	0.50
1:C:354:TYR:CZ	1:C:404:VAL:HG12	2.45	0.50
2:D:445:ASN:HB2	2:D:472:PRO:O	2.10	0.50
1:C:224:ALA:HB3	1:C:271:ASN:HD22	1.76	0.50
3:G:113:GLY:O	3:G:115:TYR:N	2.43	0.50
1:C:475:LEU:HD12	2:D:267:GLY:H	1.77	0.50
2:B:118:MET:CB	2:B:154:MET:HE1	2.42	0.50
2:D:118:MET:CB	2:D:154:MET:HE1	2.41	0.50
3:E:11:GLY:HA2	3:E:128:GLY:HA3	1.92	0.50
3:H:113:GLY:O	3:H:115:TYR:N	2.45	0.50
1:C:62:CYS:HB3	2:D:94:GLY:HA3	1.93	0.50
3:E:12:GLY:HA3	3:F:11:GLY:O	2.11	0.50
1:C:55:GLY:HA2	2:D:114:VAL:HG11	1.93	0.50
2:D:114:VAL:HG12	2:D:115:SER:N	2.26	0.50
2:B:114:VAL:HG12	2:B:115:SER:N	2.26	0.50
2:D:47:THR:HA	2:D:52:TYR:CG	2.47	0.50
3:E:11:GLY:O	3:F:12:GLY:HA3	2.12	0.50
2:D:473:ILE:HG21	2:D:479:LEU:HD12	1.93	0.50
1:C:85:PRO:HG3	2:D:189:PHE:HB3	1.94	0.50
1:C:157:GLY:CA	1:C:184:GLU:HG2	2.42	0.50
2:D:126:GLY:HA3	3:H:95:VAL:HG22	1.93	0.50
3:F:113:GLY:O	3:F:115:TYR:N	2.45	0.50
2:B:72:PRO:HG3	9:B:525:CLF:S3B	2.52	0.49
2:D:391:VAL:HA	2:D:419:ALA:HA	1.94	0.49
1:C:357:GLY:HA2	1:C:379:TYR:CD2	2.48	0.49
1:C:332:LYS:HA	1:C:335:TRP:NE1	2.27	0.49
3:F:11:GLY:HA2	3:F:128:GLY:HA3	1.93	0.49
2:B:108:ARG:HH11	2:B:108:ARG:HG3	1.77	0.49
3:H:218:GLN:O	3:H:222:ILE:HG12	2.12	0.49
1:C:226:ILE:HA	1:C:253:TRP:HB2	1.93	0.49
2:B:209:THR:HG21	2:B:309:TRP:CD1	2.47	0.49
3:H:162:ASN:HD21	3:H:259:ILE:H	1.60	0.49
1:A:387:TYR:O	1:A:391:MET:HG3	2.13	0.49
3:G:218:GLN:O	3:G:222:ILE:HG12	2.12	0.49
2:B:494:LEU:O	2:B:498:VAL:HG23	2.12	0.49
2:B:305:VAL:O	2:B:309:TRP:HB2	2.12	0.49

Continued on next page...

Continued from previous page...

Atom-1	Atom-2	Distance(Å)	Clash(Å)
1:A:332:LYS:HA	1:A:335:TRP:NE1	2.27	0.49
2:D:397:ASN:ND2	2:D:397:ASN:H	2.10	0.49
3:E:113:GLY:O	3:E:115:TYR:N	2.45	0.49
1:A:332:LYS:HB3	1:A:333:PRO:HD3	1.94	0.49
3:G:50:HIS:O	3:G:224:ARG:HD3	2.13	0.49
2:B:391:VAL:HA	2:B:419:ALA:HA	1.95	0.49
2:D:494:LEU:O	2:D:498:VAL:HG23	2.12	0.49
2:B:473:ILE:HG21	2:B:479:LEU:HD12	1.94	0.49
1:C:332:LYS:HB3	1:C:333:PRO:HD3	1.93	0.49
1:C:475:LEU:HD12	2:D:267:GLY:N	2.28	0.49
3:E:218:GLN:O	3:E:222:ILE:HG12	2.12	0.49
2:B:397:ASN:H	2:B:397:ASN:ND2	2.10	0.49
3:E:137:MET:HB3	3:E:138:PRO:HD3	1.95	0.49
3:F:218:GLN:O	3:F:222:ILE:HG12	2.12	0.49
1:C:387:TYR:O	1:C:391:MET:HG3	2.13	0.49
3:F:162:ASN:HD21	3:F:259:ILE:H	1.61	0.49
2:B:47:THR:HA	2:B:52:TYR:CG	2.48	0.49
1:A:157:GLY:CA	1:A:184:GLU:HG2	2.42	0.49
1:A:381:PHE:CZ	8:A:496:CFM:S2B	3.05	0.49
1:A:37:PRO:O	1:A:38:ALA:HB3	2.12	0.49
1:A:7:GLU:H	1:A:7:GLU:CD	2.16	0.49
1:C:103:THR:HB	1:C:106:VAL:CG2	2.41	0.49
3:G:223:ARG:HD2	3:G:230:TYR:HE1	1.78	0.49
1:A:412:PHE:O	1:A:416:ILE:HG12	2.13	0.49
1:C:139:GLU:HG3	1:C:174:LEU:HD13	1.95	0.48
3:F:137:MET:HB3	3:F:138:PRO:HD3	1.95	0.48
3:E:33:VAL:HG22	3:E:121:PHE:HB2	1.95	0.48
3:E:162:ASN:HD21	3:E:259:ILE:H	1.61	0.48
1:C:37:PRO:O	1:C:38:ALA:HB3	2.12	0.48
2:B:88:TYR:OH	2:B:116:ASP:HB3	2.12	0.48
2:D:88:TYR:OH	2:D:116:ASP:HB3	2.13	0.48
1:C:412:PHE:O	1:C:416:ILE:HG12	2.13	0.48
1:A:355:ILE:HB	1:A:360:PRO:HD3	1.96	0.48
2:D:71:GLN:O	2:D:196:GLY:HA3	2.14	0.48
2:B:153:CYS:O	2:B:157:VAL:HG23	2.14	0.48
1:C:48:SER:HB2	1:C:382:ALA:O	2.13	0.48
2:D:305:VAL:O	2:D:309:TRP:HB2	2.14	0.48
2:D:209:THR:HG21	2:D:309:TRP:CD1	2.48	0.48
3:E:130:VAL:HG23	3:E:135:PHE:HB2	1.96	0.48
2:D:104:ASN:ND2	2:D:111:VAL:HG23	2.28	0.48
1:A:106:VAL:O	1:A:144:LEU:HB2	2.14	0.48
2:D:228:PRO:HA	2:D:293:LEU:HD12	1.96	0.48

Continued on next page...

Continued from previous page...

Atom-1	Atom-2	Distance(Å)	Clash(Å)
3:G:196:ILE:HB	3:G:207:MET:HE3	1.96	0.48
2:B:104:ASN:ND2	2:B:111:VAL:HG23	2.29	0.48
1:C:381:PHE:CZ	8:C:496:CFM:S2B	3.07	0.48
3:H:38:CYS:HB2	3:H:126:VAL:HA	1.96	0.48
1:A:357:GLY:HA2	1:A:379:TYR:CD2	2.47	0.47
3:H:137:MET:HB3	3:H:138:PRO:HD3	1.95	0.47
1:C:77:ASP:HA	1:C:107:ASN:O	2.14	0.47
2:B:512:MET:HE2	2:D:453:ARG:HG2	1.95	0.47
2:B:228:PRO:HA	2:B:293:LEU:HD12	1.96	0.47
1:C:7:GLU:H	1:C:7:GLU:CD	2.16	0.47
3:G:11:GLY:O	3:H:12:GLY:HA3	2.13	0.47
2:D:373:PRO:HD3	2:D:397:ASN:ND2	2.29	0.47
2:D:88:TYR:O	2:D:149:VAL:HA	2.14	0.47
3:F:223:ARG:HD2	3:F:230:TYR:HE1	1.79	0.47
1:A:139:GLU:HG3	1:A:174:LEU:HD13	1.96	0.47
1:C:106:VAL:O	1:C:144:LEU:HB2	2.14	0.47
1:A:224:ALA:HB3	1:A:271:ASN:HD22	1.78	0.47
3:F:50:HIS:O	3:F:224:ARG:HD3	2.14	0.47
2:B:363:HIS:CG	1:C:465:MET:HG3	2.49	0.47
3:H:223:ARG:HD2	3:H:230:TYR:HE1	1.79	0.47
2:D:153:CYS:O	2:D:157:VAL:HG23	2.14	0.47
3:G:162:ASN:HD21	3:G:259:ILE:H	1.61	0.47
3:G:130:VAL:HG23	3:G:135:PHE:HB2	1.95	0.47
3:G:38:CYS:HB2	3:G:126:VAL:HA	1.96	0.47
1:C:355:ILE:HB	1:C:360:PRO:HD3	1.95	0.47
3:H:130:VAL:HG23	3:H:135:PHE:HB2	1.96	0.47
1:C:433:LYS:HE2	2:D:263:THR:OG1	2.14	0.47
3:F:130:VAL:HG23	3:F:135:PHE:HB2	1.96	0.47
3:F:33:VAL:HG22	3:F:121:PHE:HB2	1.96	0.47
3:E:223:ARG:HD2	3:E:230:TYR:HE1	1.79	0.47
1:A:77:ASP:HA	1:A:107:ASN:O	2.14	0.47
3:G:137:MET:HB3	3:G:138:PRO:HD3	1.95	0.47
3:G:33:VAL:HG22	3:G:121:PHE:HB2	1.96	0.47
1:A:356:GLY:HA3	8:A:496:CFM:S1B	2.55	0.47
2:B:394:LEU:HD13	2:B:430:LEU:HB2	1.97	0.47
1:C:420:LEU:HD12	1:C:437:PRO:O	2.13	0.47
1:C:472:TRP:O	1:C:475:LEU:HD23	2.15	0.47
2:D:74:GLY:HA3	2:D:193:HIS:O	2.15	0.47
1:A:81:ILE:HD13	1:A:134:LEU:HD22	1.96	0.47
3:H:50:HIS:O	3:H:224:ARG:HD3	2.15	0.47
2:B:71:GLN:O	2:B:196:GLY:HA3	2.14	0.47
1:C:93:ARG:HD2	1:C:113:ASN:CB	2.45	0.47

Continued on next page...

Continued from previous page...

Atom-1	Atom-2	Distance(Å)	Clash(Å)
1:A:48:SER:HB2	1:A:382:ALA:O	2.15	0.47
2:B:324:TRP:HH2	2:B:377:MET:HG2	1.80	0.46
2:D:180:PRO:HA	2:D:207:TYR:OH	2.15	0.46
3:E:50:HIS:O	3:E:224:ARG:HD3	2.14	0.46
3:H:256:PRO:O	3:H:258:PRO:HD3	2.15	0.46
3:F:38:CYS:HB2	3:F:126:VAL:HA	1.96	0.46
2:D:258:GLU:HG3	2:D:259:GLU:N	2.30	0.46
2:B:158:ILE:HG22	3:F:97:CYS:CB	2.33	0.46
1:A:472:TRP:O	1:A:475:LEU:HD23	2.15	0.46
2:B:158:ILE:CG2	3:F:97:CYS:HB2	2.32	0.46
3:H:45:THR:CG2	3:H:85:CYS:HB3	2.44	0.46
3:E:38:CYS:HB2	3:E:126:VAL:HA	1.96	0.46
2:B:74:GLY:HA3	2:B:193:HIS:O	2.16	0.46
1:A:144:LEU:HD13	2:B:43:VAL:HG21	1.96	0.46
2:D:394:LEU:HD13	2:D:430:LEU:HB2	1.97	0.46
1:A:437:PRO:HA	1:A:472:TRP:CZ2	2.51	0.46
2:B:451:ILE:O	2:B:455:THR:HG23	2.15	0.46
2:B:180:PRO:HA	2:B:207:TYR:OH	2.15	0.46
2:B:373:PRO:HD3	2:B:397:ASN:ND2	2.31	0.46
2:B:88:TYR:O	2:B:149:VAL:HA	2.15	0.46
1:A:420:LEU:HD12	1:A:437:PRO:O	2.16	0.46
1:A:210:ARG:HG3	1:A:263:GLU:HB3	1.98	0.46
2:B:258:GLU:HG3	2:B:259:GLU:N	2.29	0.46
1:C:356:GLY:HA3	8:C:496:CFM:S1B	2.56	0.46
1:C:81:ILE:HD13	1:C:134:LEU:HD22	1.96	0.46
3:H:1:ALA:O	3:H:2:MET:HB3	2.15	0.46
3:F:56:THR:O	3:F:60:MET:HB2	2.16	0.46
3:E:22:LEU:HD13	3:E:243:LEU:HG	1.97	0.46
3:H:131:VAL:HG23	3:H:132:CYS:SG	2.56	0.46
2:B:472:PRO:HB2	2:B:474:PHE:CE1	2.50	0.46
1:C:41:GLN:CG	1:C:42:SER:H	2.28	0.46
2:B:131:MET:HG2	2:B:165:PHE:HB3	1.96	0.46
3:E:256:PRO:O	3:E:258:PRO:HD3	2.16	0.46
1:A:93:ARG:HD2	1:A:113:ASN:CB	2.45	0.46
3:G:1:ALA:O	3:G:2:MET:HB3	2.16	0.46
3:F:45:THR:CG2	3:F:85:CYS:HB3	2.45	0.45
1:A:62:CYS:HB3	2:B:94:GLY:HA3	1.98	0.45
2:D:472:PRO:HB2	2:D:474:PHE:CE1	2.52	0.45
1:C:437:PRO:HA	1:C:472:TRP:CZ2	2.51	0.45
2:D:131:MET:HG2	2:D:165:PHE:HB3	1.97	0.45
3:G:86:VAL:HG11	3:G:109:LEU:HD21	1.98	0.45
3:G:126:VAL:HG12	3:G:127:LEU:HD23	1.98	0.45

Continued on next page...

Continued from previous page...

Atom-1	Atom-2	Distance(Å)	Clash(Å)
2:D:198:ASP:HB2	2:D:297:HIS:O	2.16	0.45
1:C:187:ARG:HA	2:D:120:GLU:HG2	1.98	0.45
1:C:11:SER:O	1:C:15:GLU:HG3	2.16	0.45
3:H:86:VAL:HG11	3:H:109:LEU:HD21	1.98	0.45
1:A:263:GLU:O	1:A:266:PRO:HD2	2.17	0.45
3:H:22:LEU:HD13	3:H:243:LEU:HG	1.99	0.45
1:A:275:CYS:SG	1:A:278:SER:OG	2.67	0.45
3:G:22:LEU:HD13	3:G:243:LEU:HG	1.98	0.45
1:A:148:ILE:HG22	1:A:149:SER:N	2.31	0.45
2:D:305:VAL:HG12	2:D:311:HIS:HB2	1.99	0.45
1:C:229:TYR:CD1	1:C:254:SER:HB2	2.51	0.45
3:F:256:PRO:O	3:F:258:PRO:HD3	2.17	0.45
3:F:86:VAL:HG11	3:F:109:LEU:HD21	1.98	0.45
1:C:62:CYS:HB2	1:C:185:GLY:CA	2.46	0.45
3:E:86:VAL:HG11	3:E:109:LEU:HD21	1.98	0.45
1:C:394:MET:HB3	1:C:398:THR:OG1	2.16	0.45
2:D:118:MET:SD	2:D:154:MET:HE1	2.57	0.45
2:B:118:MET:SD	2:B:154:MET:HE1	2.57	0.45
1:A:41:GLN:CG	1:A:42:SER:H	2.29	0.45
3:E:1:ALA:O	3:E:2:MET:HB3	2.16	0.45
2:D:324:TRP:HH2	2:D:377:MET:HG2	1.81	0.45
2:D:451:ILE:O	2:D:455:THR:HG23	2.17	0.45
3:G:159:TYR:HE1	3:H:41:LYS:HB3	1.80	0.45
2:B:71:GLN:N	2:B:72:PRO:HD2	2.31	0.45
1:C:93:ARG:HD2	1:C:113:ASN:HB2	1.99	0.45
1:A:93:ARG:HD2	1:A:113:ASN:HB2	1.98	0.45
3:E:56:THR:O	3:E:60:MET:HB2	2.16	0.45
3:H:126:VAL:HG12	3:H:127:LEU:HD23	1.99	0.45
2:D:124:VAL:O	3:H:96:GLY:HA3	2.17	0.45
1:C:148:ILE:HG22	1:C:149:SER:N	2.31	0.45
3:F:1:ALA:O	3:F:2:MET:HB3	2.16	0.45
2:B:198:ASP:HB2	2:B:297:HIS:O	2.16	0.45
2:D:71:GLN:N	2:D:72:PRO:HD2	2.32	0.45
2:B:328:PHE:O	2:B:332:VAL:HG23	2.17	0.45
3:H:33:VAL:HG22	3:H:121:PHE:HB2	1.97	0.45
1:A:302:PRO:HG2	1:A:369:ASP:OD2	2.17	0.44
3:G:256:PRO:O	3:G:258:PRO:HD3	2.17	0.44
1:A:422:GLY:HA2	1:A:439:ARG:O	2.17	0.44
1:C:263:GLU:O	1:C:266:PRO:HD2	2.17	0.44
1:C:66:GLY:O	1:C:70:VAL:HG22	2.18	0.44
3:G:45:THR:CG2	3:G:85:CYS:HB3	2.44	0.44
1:A:420:LEU:HD21	1:A:463:MET:HE2	1.98	0.44

Continued on next page...

Continued from previous page...

Atom-1	Atom-2	Distance(Å)	Clash(Å)
3:F:260:THR:OG1	3:F:263:GLU:HG3	2.17	0.44
1:A:177:THR:OG1	1:A:209:LYS:HE3	2.18	0.44
1:C:422:GLY:HA2	1:C:439:ARG:O	2.18	0.44
1:A:85:PRO:HG3	2:B:189:PHE:HB3	1.99	0.44
1:A:62:CYS:HB2	1:A:185:GLY:CA	2.46	0.44
1:A:394:MET:HB3	1:A:398:THR:OG1	2.17	0.44
3:F:126:VAL:HG12	3:F:127:LEU:HD23	1.99	0.44
3:G:56:THR:O	3:G:60:MET:HB2	2.16	0.44
2:B:161:ASP:OD2	3:E:140:ARG:HG2	2.17	0.44
3:F:22:LEU:HD13	3:F:243:LEU:HG	1.98	0.44
2:D:156:GLU:HG3	2:D:187:PRO:CA	2.48	0.44
1:C:302:PRO:HG2	1:C:369:ASP:OD2	2.18	0.44
1:A:86:VAL:O	9:B:525:CLF:S2B	2.75	0.44
3:G:260:THR:OG1	3:G:263:GLU:HG3	2.17	0.44
1:A:229:TYR:CD1	1:A:254:SER:HB2	2.52	0.44
1:A:275:CYS:CA	1:A:358:LEU:HD22	2.42	0.44
2:B:86:MET:SD	2:B:114:VAL:HG23	2.58	0.44
2:B:293:LEU:O	2:B:318:ILE:HA	2.18	0.44
1:A:351:VAL:O	1:A:374:VAL:HA	2.18	0.44
2:D:328:PHE:O	2:D:332:VAL:HG23	2.17	0.44
2:B:453:ARG:HG2	2:D:512:MET:HE2	1.99	0.44
1:C:442:HIS:CG	7:C:494:HCA:H51	2.53	0.44
3:E:45:THR:CG2	3:E:85:CYS:HB3	2.45	0.44
2:B:156:GLU:HG3	2:B:187:PRO:CA	2.48	0.44
3:H:19:THR:O	3:H:23:VAL:HG23	2.18	0.44
1:C:86:VAL:O	2:D:70:CYS:HB3	2.17	0.43
2:B:381:LYS:O	2:B:385:GLU:HG3	2.18	0.43
2:B:487:TYR:O	2:B:491:MET:HG3	2.17	0.43
3:E:260:THR:OG1	3:E:263:GLU:HG3	2.17	0.43
2:B:512:MET:HE3	2:D:457:HIS:HB2	2.01	0.43
3:E:126:VAL:HG12	3:E:127:LEU:HD23	1.99	0.43
3:F:56:THR:OG1	3:F:59:GLU:HB2	2.18	0.43
3:E:139:ILE:HG13	3:E:147:ILE:HD11	2.01	0.43
1:A:106:VAL:CG2	2:B:40:ILE:HG23	2.47	0.43
1:C:62:CYS:SG	1:C:64:TYR:HB3	2.59	0.43
2:D:373:PRO:HG3	2:D:395:CYS:SG	2.59	0.43
3:G:196:ILE:HB	3:G:207:MET:CE	2.48	0.43
2:B:457:HIS:HB2	2:D:512:MET:HE3	2.00	0.43
1:A:11:SER:O	1:A:15:GLU:HG3	2.17	0.43
2:B:200:MET:O	2:B:204:ILE:HG13	2.18	0.43
3:F:196:ILE:HB	3:F:207:MET:CE	2.48	0.43
2:B:324:TRP:CZ3	2:B:378:GLY:HA2	2.53	0.43

Continued on next page...

Continued from previous page...

Atom-1	Atom-2	Distance(Å)	Clash(Å)
2:D:324:TRP:CZ3	2:D:378:GLY:HA2	2.54	0.43
1:C:210:ARG:HG3	1:C:263:GLU:HB3	2.00	0.43
3:G:19:THR:O	3:G:23:VAL:HG23	2.19	0.43
1:A:144:LEU:CD1	2:B:43:VAL:HG21	2.48	0.43
1:A:231:ILE:HG22	1:A:444:TRP:CD1	2.53	0.43
1:C:203:ARG:HG3	1:C:285:HIS:CE1	2.54	0.43
1:C:275:CYS:CA	1:C:358:LEU:HD22	2.41	0.43
1:C:300:PHE:CD1	1:C:363:VAL:HG12	2.54	0.43
3:H:196:ILE:HB	3:H:207:MET:CE	2.48	0.43
1:C:425:ILE:HD12	2:D:104:ASN:HB3	2.00	0.43
1:C:343:ARG:HB3	1:C:344:PRO:HD3	2.01	0.43
1:A:203:ARG:HG3	1:A:285:HIS:CE1	2.53	0.43
2:D:463:GLU:HB3	2:D:504:ARG:HH21	1.83	0.43
2:D:381:LYS:O	2:D:385:GLU:HG3	2.19	0.43
3:F:139:ILE:HG13	3:F:147:ILE:HD11	2.01	0.43
3:G:131:VAL:HG23	3:G:132:CYS:SG	2.59	0.43
3:F:146:GLU:HA	3:F:178:ARG:O	2.19	0.43
3:H:56:THR:OG1	3:H:59:GLU:HB2	2.18	0.43
3:H:56:THR:O	3:H:60:MET:HB2	2.18	0.43
3:H:67:VAL:HG21	3:H:104:THR:HG21	2.00	0.43
1:A:280:ASN:ND2	1:A:284:ARG:NH1	2.67	0.43
3:F:178:ARG:HD3	3:F:178:ARG:HA	1.85	0.43
1:C:334:GLU:O	1:C:338:VAL:HG23	2.18	0.43
2:B:463:GLU:HB3	2:B:504:ARG:HH21	1.84	0.43
1:C:184:GLU:HB3	1:C:186:PHE:CE2	2.54	0.43
1:C:265:THR:HG22	1:C:286:MET:CE	2.49	0.43
1:A:245:MET:HB3	1:A:327:VAL:HG21	2.00	0.43
2:D:200:MET:O	2:D:204:ILE:HG13	2.19	0.43
3:H:139:ILE:HG13	3:H:147:ILE:HD11	2.00	0.43
2:B:305:VAL:HG12	2:B:311:HIS:HB2	2.00	0.43
1:A:66:GLY:O	1:A:70:VAL:HG22	2.18	0.43
1:A:265:THR:HG22	1:A:286:MET:CE	2.49	0.43
1:A:334:GLU:O	1:A:338:VAL:HG23	2.18	0.43
3:E:67:VAL:HG21	3:E:104:THR:HG21	2.00	0.43
3:G:49:LEU:CD1	3:G:53:ALA:HB2	2.49	0.43
1:C:351:VAL:O	1:C:374:VAL:HA	2.19	0.43
2:B:12:TYR:OH	2:D:508:GLU:HB3	2.19	0.42
1:C:54:PRO:HB3	2:D:116:ASP:O	2.19	0.42
3:E:93:PRO:HB3	3:F:130:VAL:HG13	2.00	0.42
1:A:79:ILE:O	1:A:148:ILE:HA	2.19	0.42
1:A:62:CYS:SG	1:A:64:TYR:HB3	2.59	0.42
3:H:146:GLU:HA	3:H:178:ARG:O	2.19	0.42

Continued on next page...

Continued from previous page...

Atom-1	Atom-2	Distance(Å)	Clash(Å)
3:G:25:ALA:O	3:G:29:MET:HG3	2.18	0.42
3:F:49:LEU:CD1	3:F:53:ALA:HB2	2.49	0.42
1:C:177:THR:OG1	1:C:209:LYS:HE3	2.19	0.42
2:D:41:ASP:O	2:D:45:GLN:HG2	2.19	0.42
3:F:131:VAL:HG23	3:F:132:CYS:SG	2.60	0.42
3:E:146:GLU:HA	3:E:178:ARG:O	2.19	0.42
2:D:293:LEU:O	2:D:318:ILE:HA	2.19	0.42
1:C:79:ILE:O	1:C:148:ILE:HA	2.19	0.42
1:A:438:PHE:CD1	1:A:439:ARG:N	2.87	0.42
3:G:56:THR:OG1	3:G:59:GLU:HB2	2.19	0.42
1:C:86:VAL:O	9:D:525:CLF:S2B	2.78	0.42
3:H:260:THR:OG1	3:H:263:GLU:HG3	2.18	0.42
1:C:20:TYR:HA	1:C:21:PRO:HD3	1.95	0.42
3:E:19:THR:O	3:E:23:VAL:HG23	2.19	0.42
1:C:350:ARG:HD2	1:C:375:VAL:HG21	2.02	0.42
1:C:44:LYS:HE2	1:C:44:LYS:HA	2.01	0.42
2:D:487:TYR:O	2:D:491:MET:HG3	2.18	0.42
2:D:441:PHE:CZ	2:D:501:ILE:HA	2.54	0.42
1:C:229:TYR:CE1	1:C:254:SER:HB2	2.54	0.42
1:A:70:VAL:HG23	1:A:71:VAL:HG23	2.01	0.42
3:G:146:GLU:HA	3:G:178:ARG:O	2.20	0.42
2:B:478:HIS:HE1	2:D:358:SER:OG	2.02	0.42
1:A:475:LEU:HD12	2:B:267:GLY:H	1.85	0.42
3:E:56:THR:OG1	3:E:59:GLU:HB2	2.19	0.42
1:C:438:PHE:CD1	1:C:439:ARG:N	2.87	0.42
2:D:441:PHE:HD2	2:D:465:PRO:HB2	1.84	0.42
3:F:67:VAL:HG21	3:F:104:THR:HG21	2.00	0.42
1:A:30:LYS:HB3	1:A:47:ILE:HG22	2.01	0.42
3:H:49:LEU:CD1	3:H:53:ALA:HB2	2.49	0.42
2:B:41:ASP:O	2:B:45:GLN:HG2	2.20	0.42
2:D:197:TRP:CZ3	2:D:229:GLY:HA2	2.55	0.42
1:C:70:VAL:HG23	1:C:71:VAL:HG23	2.02	0.42
2:B:446:SER:OG	2:B:473:ILE:HA	2.19	0.42
2:B:441:PHE:HD2	2:B:465:PRO:HB2	1.84	0.42
2:D:232:THR:HG21	2:D:471:PHE:CD1	2.55	0.42
1:A:223:VAL:HG11	1:A:247:LEU:HD13	2.00	0.42
1:A:417:LYS:N	1:A:418:PRO:HD3	2.35	0.42
1:A:44:LYS:HA	1:A:44:LYS:HE2	2.01	0.42
1:A:184:GLU:HB3	1:A:186:PHE:CE2	2.54	0.42
1:A:442:HIS:CG	7:A:494:HCA:H51	2.54	0.42
2:B:70:CYS:SG	2:B:72:PRO:HG2	2.60	0.42
2:D:441:PHE:CD2	2:D:465:PRO:HB2	2.55	0.42

Continued on next page...

Continued from previous page...

Atom-1	Atom-2	Distance(Å)	Clash(Å)
3:H:144:ALA:O	3:H:177:VAL:HG22	2.20	0.42
3:H:49:LEU:HD12	3:H:53:ALA:HB2	2.01	0.42
2:B:441:PHE:CZ	2:B:501:ILE:HA	2.55	0.42
3:F:25:ALA:O	3:F:29:MET:HG3	2.19	0.42
1:C:352:MET:SD	1:C:418:PRO:CG	3.08	0.42
1:C:280:ASN:ND2	1:C:284:ARG:NH1	2.68	0.42
3:G:13:ILE:HA	3:G:13:ILE:HD12	1.93	0.42
1:C:229:TYR:HA	1:C:254:SER:O	2.19	0.42
1:C:40:THR:HG22	1:C:392:LYS:HE3	2.02	0.42
1:C:245:MET:HB3	1:C:327:VAL:HG21	2.01	0.42
1:C:30:LYS:HB3	1:C:47:ILE:HG22	2.02	0.42
3:F:19:THR:O	3:F:23:VAL:HG23	2.20	0.42
1:C:144:LEU:HD13	2:D:43:VAL:HG21	2.02	0.41
1:A:229:TYR:CE1	1:A:254:SER:HB2	2.55	0.41
3:E:196:ILE:HB	3:E:207:MET:CE	2.49	0.41
3:E:49:LEU:CD1	3:E:53:ALA:HB2	2.50	0.41
1:C:231:ILE:HG22	1:C:444:TRP:CD1	2.54	0.41
1:C:477:ALA:HA	1:C:478:PRO:HD3	1.91	0.41
1:C:275:CYS:SG	1:C:278:SER:OG	2.68	0.41
1:C:106:VAL:CG2	2:D:40:ILE:HG23	2.50	0.41
1:A:229:TYR:HA	1:A:254:SER:O	2.20	0.41
3:G:159:TYR:CE1	3:H:41:LYS:HB3	2.54	0.41
3:G:49:LEU:HD12	3:G:53:ALA:HB2	2.02	0.41
2:D:212:SER:O	2:D:216:LYS:HD3	2.20	0.41
3:E:131:VAL:HG23	3:E:132:CYS:SG	2.61	0.41
3:E:49:LEU:HD12	3:E:53:ALA:HB2	2.02	0.41
3:H:25:ALA:O	3:H:29:MET:HG3	2.20	0.41
3:G:221:GLU:CD	3:H:155:MET:HB3	2.41	0.41
2:D:96:VAL:O	2:D:100:ARG:HG3	2.21	0.41
2:B:43:VAL:O	2:B:47:THR:HG23	2.20	0.41
1:C:442:HIS:HA	8:C:496:CFM:S4B	2.59	0.41
2:D:446:SER:OG	2:D:473:ILE:HA	2.21	0.41
2:D:397:ASN:HD22	2:D:397:ASN:N	2.18	0.41
2:D:86:MET:SD	2:D:114:VAL:HG23	2.60	0.41
1:A:86:VAL:O	2:B:70:CYS:HB3	2.21	0.41
3:E:130:VAL:HG13	3:F:93:PRO:HB3	2.02	0.41
2:B:397:ASN:N	2:B:397:ASN:HD22	2.18	0.41
3:H:209:HIS:HB3	3:H:243:LEU:HD13	2.03	0.41
3:G:178:ARG:CB	3:G:253:LEU:HB3	2.51	0.41
1:A:352:MET:SD	1:A:418:PRO:CG	3.09	0.41
2:D:422:TYR:HB3	2:D:425:LYS:HG3	2.02	0.41
2:D:71:GLN:HA	2:D:193:HIS:HA	2.03	0.41

Continued on next page...

Continued from previous page...

Atom-1	Atom-2	Distance(Å)	Clash(Å)
2:D:301:THR:O	2:D:305:VAL:HG23	2.21	0.41
2:B:422:TYR:HB3	2:B:425:LYS:HG3	2.01	0.41
3:H:66:THR:HG22	3:H:68:GLU:H	1.85	0.41
1:A:274:HIS:HD2	1:A:297:TYR:CE2	2.39	0.41
3:G:139:ILE:HG13	3:G:147:ILE:HD11	2.02	0.41
3:G:178:ARG:HA	3:G:178:ARG:HD3	1.84	0.41
2:B:397:ASN:N	2:B:397:ASN:ND2	2.68	0.41
1:C:417:LYS:N	1:C:418:PRO:HD3	2.35	0.41
1:C:223:VAL:HG11	1:C:247:LEU:HD13	2.01	0.41
2:B:197:TRP:CZ3	2:B:229:GLY:HA2	2.56	0.41
2:D:413:SER:HA	2:D:414:PRO:HD3	1.92	0.41
1:C:9:VAL:O	1:C:12:LEU:HB3	2.21	0.41
3:G:139:ILE:O	3:G:139:ILE:HG12	2.21	0.41
2:D:72:PRO:O	2:D:76:VAL:HG23	2.21	0.41
2:B:72:PRO:O	2:B:76:VAL:HG23	2.21	0.41
1:A:361:ARG:HB3	1:A:379:TYR:OH	2.21	0.41
1:A:9:VAL:O	1:A:12:LEU:HB3	2.21	0.41
3:G:67:VAL:HG21	3:G:104:THR:HG21	2.02	0.41
3:G:66:THR:HG22	3:G:68:GLU:H	1.86	0.41
3:F:178:ARG:CB	3:F:253:LEU:HB3	2.51	0.40
1:A:475:LEU:HD12	2:B:267:GLY:N	2.36	0.40
3:F:209:HIS:HB3	3:F:243:LEU:HD13	2.04	0.40
3:E:206:GLN:NE2	3:E:252:LEU:HB3	2.36	0.40
3:F:66:THR:HG22	3:F:68:GLU:H	1.86	0.40
3:F:139:ILE:O	3:F:139:ILE:HG12	2.20	0.40
3:E:178:ARG:CB	3:E:253:LEU:HB3	2.51	0.40
3:H:178:ARG:CB	3:H:253:LEU:HB3	2.51	0.40
2:D:397:ASN:ND2	2:D:397:ASN:N	2.68	0.40
2:B:441:PHE:CD2	2:B:465:PRO:HB2	2.56	0.40
2:B:380:VAL:HG13	2:B:390:PRO:HG3	2.03	0.40
3:E:25:ALA:O	3:E:29:MET:HG3	2.20	0.40
1:C:76:LYS:HD3	1:C:256:ASP:OD1	2.22	0.40
1:A:54:PRO:HB3	2:B:116:ASP:O	2.22	0.40
1:A:123:ILE:N	1:A:123:ILE:HD12	2.36	0.40
2:D:380:VAL:HG13	2:D:390:PRO:HG3	2.03	0.40
3:E:144:ALA:O	3:E:177:VAL:HG22	2.21	0.40
3:E:76:LEU:CD1	3:E:86:VAL:HG22	2.48	0.40
2:D:43:VAL:O	2:D:47:THR:HG23	2.21	0.40
3:G:209:HIS:HB3	3:G:243:LEU:HD13	2.03	0.40
3:F:49:LEU:HD12	3:F:53:ALA:HB2	2.02	0.40
3:H:228:ILE:HD13	3:H:237:ALA:HB1	2.04	0.40
1:A:343:ARG:HB3	1:A:344:PRO:HD3	2.03	0.40

Continued on next page...

Continued from previous page...

Atom-1	Atom-2	Distance(Å)	Clash(Å)
3:E:242:ALA:O	3:E:246:LYS:HG2	2.22	0.40

There are no symmetry-related clashes.

5.3 Torsion angles

5.3.1 Protein backbone ⓘ

In the following table, the Percentiles column shows the percent Ramachandran outliers of the chain as a percentile score with respect to all X-ray entries followed by that with respect to entries of similar resolution. The Analysed column shows the number of residues for which the backbone conformation was analysed, and the total number of residues.

Mol	Chain	Analysed	Favoured	Allowed	Outliers	Percentiles	
1	A	476/491 (97%)	424 (89%)	42 (9%)	10 (2%)	11	47
1	C	476/491 (97%)	425 (89%)	42 (9%)	9 (2%)	12	51
2	B	520/522 (100%)	481 (92%)	35 (7%)	4 (1%)	27	76
2	D	520/522 (100%)	481 (92%)	35 (7%)	4 (1%)	27	76
3	E	272/289 (94%)	249 (92%)	19 (7%)	4 (2%)	15	58
3	F	272/289 (94%)	249 (92%)	19 (7%)	4 (2%)	15	58
3	G	272/289 (94%)	249 (92%)	19 (7%)	4 (2%)	15	58
3	H	272/289 (94%)	249 (92%)	19 (7%)	4 (2%)	15	58
All	All	3080/3182 (97%)	2807 (91%)	230 (8%)	43 (1%)	16	60

All (43) Ramachandran outliers are listed below:

Mol	Chain	Res	Type
1	A	45	CYS
1	C	45	CYS
3	E	114	ALA
3	E	190	ASP
3	F	114	ALA
3	F	190	ASP
3	G	114	ALA
3	G	190	ASP
3	H	114	ALA
3	H	190	ASP
1	A	41	GLN

Continued on next page...

Continued from previous page...

Mol	Chain	Res	Type
1	C	41	GLN
3	E	116	GLU
3	F	116	GLU
3	G	116	GLU
3	H	116	GLU
1	A	5	SER
1	A	428	LYS
2	B	210	LEU
2	B	322	LEU
1	C	5	SER
1	C	428	LYS
2	D	210	LEU
3	E	141	GLU
3	F	141	GLU
3	G	141	GLU
3	H	141	GLU
1	A	358	LEU
1	C	76	LYS
1	C	358	LEU
2	D	322	LEU
1	A	76	LYS
2	B	255	SER
2	D	255	SER
1	A	22	GLU
1	A	355	ILE
1	C	355	ILE
2	B	5	VAL
2	D	5	VAL
1	A	126	GLY
1	A	356	GLY
1	C	126	GLY
1	C	356	GLY

5.3.2 Protein sidechains ⓘ

In the following table, the Percentiles column shows the percent sidechain outliers of the chain as a percentile score with respect to all X-ray entries followed by that with respect to entries of similar resolution. The Analysed column shows the number of residues for which the sidechain conformation was analysed, and the total number of residues.

Mol	Chain	Analysed	Rotameric	Outliers	Percentiles
1	A	406/414 (98%)	392 (97%)	14 (3%)	49 88

Continued on next page...

Continued from previous page...

Mol	Chain	Analysed	Rotameric	Outliers	Percentiles	
1	C	406/414 (98%)	391 (96%)	15 (4%)	45	86
2	B	453/454 (100%)	441 (97%)	12 (3%)	59	91
2	D	453/454 (100%)	441 (97%)	12 (3%)	59	91
3	E	218/233 (94%)	208 (95%)	10 (5%)	37	80
3	F	218/233 (94%)	208 (95%)	10 (5%)	37	80
3	G	218/233 (94%)	208 (95%)	10 (5%)	37	80
3	H	218/233 (94%)	208 (95%)	10 (5%)	37	80
All	All	2590/2668 (97%)	2497 (96%)	93 (4%)	47	86

All (93) residues with a non-rotameric sidechain are listed below:

Mol	Chain	Res	Type
1	A	14	GLN
1	A	41	GLN
1	A	58	THR
1	A	128	ASP
1	A	131	LEU
1	A	176	LYS
1	A	196	HIS
1	A	280	ASN
1	A	361	ARG
1	A	362	HIS
1	A	383	HIS
1	A	409	PHE
1	A	425	ILE
1	A	463	MET
2	B	31	PHE
2	B	37	GLN
2	B	88	TYR
2	B	151	THR
2	B	153	CYS
2	B	360	THR
2	B	379	LEU
2	B	383	LEU
2	B	397	ASN
2	B	420	THR
2	B	505	LEU
2	B	519	HIS
1	C	14	GLN
1	C	41	GLN

Continued on next page...

Continued from previous page...

Mol	Chain	Res	Type
1	C	58	THR
1	C	128	ASP
1	C	131	LEU
1	C	176	LYS
1	C	196	HIS
1	C	280	ASN
1	C	361	ARG
1	C	362	HIS
1	C	369	ASP
1	C	383	HIS
1	C	409	PHE
1	C	425	ILE
1	C	463	MET
2	D	31	PHE
2	D	37	GLN
2	D	88	TYR
2	D	151	THR
2	D	153	CYS
2	D	360	THR
2	D	379	LEU
2	D	383	LEU
2	D	397	ASN
2	D	420	THR
2	D	505	LEU
2	D	519	HIS
3	E	2	MET
3	E	59	GLU
3	E	73	GLU
3	E	86	VAL
3	E	117	ASP
3	E	132	CYS
3	E	155	MET
3	E	207	MET
3	E	257	ASN
3	E	274	MET
3	F	2	MET
3	F	59	GLU
3	F	73	GLU
3	F	86	VAL
3	F	117	ASP
3	F	132	CYS
3	F	155	MET

Continued on next page...

Continued from previous page...

Mol	Chain	Res	Type
3	F	207	MET
3	F	257	ASN
3	F	274	MET
3	G	2	MET
3	G	59	GLU
3	G	73	GLU
3	G	86	VAL
3	G	117	ASP
3	G	132	CYS
3	G	155	MET
3	G	207	MET
3	G	257	ASN
3	G	274	MET
3	H	2	MET
3	H	59	GLU
3	H	73	GLU
3	H	86	VAL
3	H	117	ASP
3	H	132	CYS
3	H	155	MET
3	H	207	MET
3	H	257	ASN
3	H	274	MET

Some sidechains can be flipped to improve hydrogen bonding and reduce clashes. All (53) such sidechains are listed below:

Mol	Chain	Res	Type
1	A	14	GLN
1	A	29	ASN
1	A	49	ASN
1	A	252	GLN
1	A	271	ASN
1	A	274	HIS
1	A	280	ASN
1	A	362	HIS
1	A	383	HIS
2	B	167	ASN
2	B	199	ASN
2	B	397	ASN
2	B	478	HIS
2	B	499	ASN
2	B	518	ASN

Continued on next page...

Continued from previous page...

Mol	Chain	Res	Type
1	C	14	GLN
1	C	29	ASN
1	C	49	ASN
1	C	252	GLN
1	C	271	ASN
1	C	274	HIS
1	C	280	ASN
1	C	362	HIS
1	C	383	HIS
2	D	167	ASN
2	D	199	ASN
2	D	397	ASN
2	D	478	HIS
2	D	499	ASN
2	D	518	ASN
3	E	4	GLN
3	E	54	GLN
3	E	142	ASN
3	E	162	ASN
3	E	201	ASN
3	E	206	GLN
3	F	4	GLN
3	F	54	GLN
3	F	162	ASN
3	F	201	ASN
3	F	206	GLN
3	G	4	GLN
3	G	54	GLN
3	G	142	ASN
3	G	162	ASN
3	G	201	ASN
3	G	206	GLN
3	H	4	GLN
3	H	54	GLN
3	H	142	ASN
3	H	162	ASN
3	H	201	ASN
3	H	206	GLN

5.3.3 RNA ⓘ

There are no RNA chains in this entry.

5.4 Non-standard residues in protein, DNA, RNA chains ⓘ

There are no non-standard protein/DNA/RNA residues in this entry.

5.5 Carbohydrates ⓘ

There are no carbohydrates in this entry.

5.6 Ligand geometry ⓘ

Of 22 ligands modelled in this entry, 6 are monoatomic - leaving 16 for Mogul analysis.

In the following table, the Counts columns list the number of bonds (or angles) for which Mogul statistics could be retrieved, the number of bonds (or angles) that are observed in the model and the number of bonds (or angles) that are defined in the chemical component dictionary. The Link column lists molecule types, if any, to which the group is linked. The Z score for a bond length (or angle) is the number of standard deviations the observed value is removed from the expected value. A bond length (or angle) with $|Z| > 2$ is considered an outlier worth inspection. RMSZ is the root-mean-square of all Z scores of the bond lengths (or angles).

Mol	Type	Chain	Res	Link	Bond lengths			Bond angles		
					Counts	RMSZ	# $ Z > 2$	Counts	RMSZ	# $ Z > 2$
7	HCA	A	494	8	13,13,13	2.20	4 (30%)	18,18,18	2.00	4 (22%)
8	CFM	A	496	1,7	18,24,24	6.54	16 (88%)	0,45,45	0.00	-
9	CLF	B	525	1,2	18,24,24	6.39	16 (88%)	0,57,57	0.00	-
7	HCA	C	494	8	13,13,13	2.19	4 (30%)	18,18,18	1.84	4 (22%)
8	CFM	C	496	1,7	18,24,24	5.34	17 (94%)	0,45,45	0.00	-
9	CLF	D	525	1,2	18,24,24	5.56	16 (88%)	0,57,57	0.00	-
11	ADP	E	291	6	29,29,29	1.95	4 (13%)	45,45,45	2.14	11 (24%)
6	ALF	E	293	11,5	4,4,4	2.14	3 (75%)	0,6,6	0.00	-
10	SF4	F	290	3	12,12,12	11.32	12 (100%)	0,24,24	0.00	-
11	ADP	F	291	6	29,29,29	2.01	4 (13%)	45,45,45	2.12	11 (24%)
6	ALF	F	293	11,5	4,4,4	2.11	2 (50%)	0,6,6	0.00	-
10	SF4	G	290	3	12,12,12	12.51	12 (100%)	0,24,24	0.00	-
11	ADP	G	291	6	29,29,29	1.87	5 (17%)	45,45,45	2.15	12 (26%)
6	ALF	G	293	11,5	4,4,4	2.12	2 (50%)	0,6,6	0.00	-
11	ADP	H	291	6	29,29,29	2.10	4 (13%)	45,45,45	2.15	11 (24%)
6	ALF	H	293	11,5	4,4,4	2.10	2 (50%)	0,6,6	0.00	-

In the following table, the Chirals column lists the number of chiral outliers, the number of chiral

centers analysed, the number of these observed in the model and the number defined in the chemical component dictionary. Similar counts are reported in the Torsion and Rings columns. '-' means no outliers of that kind were identified.

Mol	Type	Chain	Res	Link	Chirals	Torsions	Rings
7	HCA	A	494	8	-	0/17/17/17	0/0/0/0
8	CFM	A	496	1,7	-	0/0/84/84	0/0/8/8
9	CLF	B	525	1,2	-	0/0/132/132	0/0/10/10
7	HCA	C	494	8	-	0/17/17/17	0/0/0/0
8	CFM	C	496	1,7	-	0/0/84/84	0/0/8/8
9	CLF	D	525	1,2	-	0/0/132/132	0/0/10/10
11	ADP	E	291	6	-	0/16/32/32	0/1/3/3
6	ALF	E	293	11,5	-	0/0/0/0	0/0/0/0
10	SF4	F	290	3	-	0/0/48/48	0/0/5/5
11	ADP	F	291	6	-	0/16/32/32	0/1/3/3
6	ALF	F	293	11,5	-	0/0/0/0	0/0/0/0
10	SF4	G	290	3	-	0/0/48/48	0/0/5/5
11	ADP	G	291	6	-	0/16/32/32	0/1/3/3
6	ALF	G	293	11,5	-	0/0/0/0	0/0/0/0
11	ADP	H	291	6	-	0/16/32/32	0/1/3/3
6	ALF	H	293	11,5	-	0/0/0/0	0/0/0/0

All (123) bond length outliers are listed below:

Mol	Chain	Res	Type	Atoms	Z	Observed(Å)	Ideal(Å)
10	G	290	SF4	S4-FE1	-16.76	2.22	2.33
10	F	290	SF4	S4-FE1	-14.86	2.23	2.33
10	F	290	SF4	S4-FE2	-14.60	2.23	2.33
10	G	290	SF4	S4-FE2	-14.19	2.23	2.33
10	F	290	SF4	S2-FE3	-13.59	2.24	2.33
10	G	290	SF4	S2-FE3	-13.49	2.24	2.33
10	G	290	SF4	S3-FE4	-13.31	2.24	2.33
10	G	290	SF4	S4-FE3	-13.19	2.24	2.33
8	A	496	CFM	S1B-FE6	-12.61	2.24	2.33
10	G	290	SF4	S2-FE4	-12.38	2.24	2.33
10	G	290	SF4	S2-FE1	-12.36	2.24	2.33
10	F	290	SF4	S4-FE3	-12.35	2.24	2.33
8	A	496	CFM	S4B-FE7	-11.82	2.25	2.33
10	G	290	SF4	S3-FE1	-11.41	2.25	2.33
10	G	290	SF4	S3-FE2	-11.34	2.25	2.33
10	F	290	SF4	S2-FE1	-11.13	2.25	2.33
10	F	290	SF4	S1-FE2	-11.12	2.25	2.33
10	F	290	SF4	S1-FE4	-11.06	2.25	2.33
10	G	290	SF4	S1-FE2	-11.05	2.25	2.33
10	F	290	SF4	S2-FE4	-10.43	2.26	2.33

Continued on next page...

Continued from previous page...

Mol	Chain	Res	Type	Atoms	Z	Observed(Å)	Ideal(Å)
8	A	496	CFM	S2A-FE3	-10.28	2.26	2.33
9	B	525	CLF	S3B-FE6	-10.21	2.26	2.33
10	G	290	SF4	S1-FE4	-10.08	2.26	2.33
9	B	525	CLF	S2A-FE2	-9.98	2.26	2.33
8	C	496	CFM	S1B-FE6	-9.66	2.26	2.33
9	B	525	CLF	S3B-FE7	-9.38	2.26	2.33
10	F	290	SF4	S3-FE4	-9.27	2.27	2.33
10	F	290	SF4	S1-FE3	-8.89	2.27	2.33
10	G	290	SF4	S1-FE3	-8.56	2.27	2.33
10	F	290	SF4	S3-FE2	-8.49	2.27	2.33
9	B	525	CLF	S4A-FE3	-8.34	2.27	2.33
9	B	525	CLF	S4A-FE2	-8.32	2.27	2.33
9	D	525	CLF	S2B-FE5	-8.05	2.27	2.33
8	A	496	CFM	S2A-FE1	-7.97	2.27	2.33
9	B	525	CLF	S2A-FE3	-7.80	2.28	2.33
8	A	496	CFM	S4A-FE1	-7.77	2.28	2.33
9	D	525	CLF	S4A-FE3	-7.66	2.28	2.33
8	A	496	CFM	S1A-FE4	-7.62	2.28	2.33
9	B	525	CLF	S2B-FE5	-7.56	2.28	2.33
9	D	525	CLF	S2A-FE2	-7.19	2.28	2.33
9	D	525	CLF	S3A-FE4	-7.05	2.28	2.33
10	F	290	SF4	S3-FE1	-7.05	2.28	2.33
11	H	291	ADP	PB-O3A	-7.05	1.48	1.60
8	C	496	CFM	S2A-FE1	-7.01	2.28	2.33
8	C	496	CFM	S4B-FE7	-6.95	2.28	2.33
9	D	525	CLF	S3A-FE1	-6.95	2.28	2.33
9	D	525	CLF	S2A-FE3	-6.94	2.28	2.33
9	D	525	CLF	S4A-FE2	-6.74	2.28	2.33
9	D	525	CLF	S3B-FE7	-6.58	2.28	2.33
11	F	291	ADP	PB-O3A	-6.56	1.48	1.60
7	A	494	HCA	O5-C7	6.40	1.44	1.22
7	C	494	HCA	O5-C7	6.40	1.44	1.22
8	C	496	CFM	S1A-FE2	-6.39	2.29	2.33
11	H	291	ADP	PA-O3A	-6.31	1.48	1.59
11	E	291	ADP	PB-O3A	-6.23	1.49	1.60
11	F	291	ADP	PA-O3A	-6.20	1.48	1.59
11	E	291	ADP	PA-O3A	-6.17	1.48	1.59
9	B	525	CLF	S4B-FE5	-6.13	2.29	2.33
9	D	525	CLF	S2B-FE6	-6.13	2.29	2.33
8	A	496	CFM	MO1-S1B	5.99	2.38	2.31
8	A	496	CFM	S3B-FE7	-5.94	2.29	2.33
8	A	496	CFM	S4A-FE3	-5.91	2.29	2.33

Continued on next page...

Continued from previous page...

Mol	Chain	Res	Type	Atoms	Z	Observed(Å)	Ideal(Å)
8	C	496	CFM	S2A-FE2	-5.87	2.29	2.33
8	C	496	CFM	S3B-FE6	-5.85	2.29	2.33
11	G	291	ADP	PB-O3A	-5.82	1.50	1.60
9	B	525	CLF	S4A-FE4	-5.69	2.29	2.33
11	G	291	ADP	PA-O3A	-5.67	1.49	1.59
9	D	525	CLF	S4B-FE5	-5.62	2.29	2.33
8	C	496	CFM	S1A-FE4	-5.54	2.29	2.33
8	A	496	CFM	S4B-FE5	-5.53	2.29	2.33
9	B	525	CLF	S3B-FE8	-5.48	2.29	2.33
8	C	496	CFM	S4A-FE1	-5.44	2.29	2.33
8	C	496	CFM	S4A-FE4	-5.43	2.29	2.33
8	C	496	CFM	S2A-FE3	-5.42	2.29	2.33
8	C	496	CFM	S4A-FE3	-5.31	2.29	2.33
9	B	525	CLF	S3A-FE4	-5.01	2.29	2.33
9	D	525	CLF	S3B-FE6	-4.71	2.30	2.33
9	B	525	CLF	S3A-FE1	-4.16	2.30	2.33
8	C	496	CFM	MO1-S4B	4.02	2.36	2.31
9	D	525	CLF	S2B-FE7	-4.00	2.30	2.33
9	D	525	CLF	S4A-FE4	-3.63	2.30	2.33
9	B	525	CLF	S2B-FE7	-3.62	2.30	2.33
8	A	496	CFM	S2A-FE2	-3.61	2.30	2.33
8	C	496	CFM	S4B-FE5	-3.60	2.30	2.33
8	C	496	CFM	S1A-FE1	-3.57	2.30	2.33
9	B	525	CLF	S2A-FE1	-3.55	2.30	2.33
8	C	496	CFM	MO1-S3B	3.11	2.35	2.31
9	D	525	CLF	S3B-FE8	-3.10	2.31	2.33
11	H	291	ADP	O4'-C1'	3.04	1.46	1.41
8	A	496	CFM	S1A-FE2	-3.03	2.31	2.33
9	B	525	CLF	S4B-FE8	-2.95	2.31	2.33
8	C	496	CFM	S3B-FE7	-2.95	2.31	2.33
11	G	291	ADP	PB-O2B	-2.75	1.44	1.54
11	F	291	ADP	PB-O2B	-2.70	1.44	1.54
7	A	494	HCA	O3-C6	2.66	1.31	1.22
9	D	525	CLF	S4B-FE8	-2.65	2.31	2.33
9	D	525	CLF	S2A-FE1	-2.60	2.31	2.33
8	A	496	CFM	S4A-FE4	-2.60	2.31	2.33
8	A	496	CFM	MO1-S4B	2.57	2.34	2.31
7	A	494	HCA	O6-C7	-2.48	1.20	1.30
7	C	494	HCA	O3-C6	2.48	1.31	1.22
8	A	496	CFM	MO1-S3B	-2.45	2.29	2.31
7	C	494	HCA	O1-C1	2.45	1.31	1.22
7	A	494	HCA	O1-C1	2.45	1.31	1.22

Continued on next page...

Continued from previous page...

Mol	Chain	Res	Type	Atoms	Z	Observed(Å)	Ideal(Å)
11	G	291	ADP	O4'-C1'	2.45	1.45	1.41
11	E	291	ADP	PB-O2B	-2.43	1.45	1.54
11	H	291	ADP	PB-O2B	-2.43	1.45	1.54
6	G	293	ALF	F4-AL	2.41	1.84	1.58
6	H	293	ALF	F4-AL	2.35	1.84	1.58
7	C	494	HCA	O6-C7	-2.33	1.21	1.30
6	F	293	ALF	F4-AL	2.32	1.83	1.58
6	E	293	ALF	F4-AL	2.32	1.83	1.58
11	E	291	ADP	O4'-C1'	2.28	1.44	1.41
9	B	525	CLF	S2B-FE6	-2.27	2.31	2.33
6	F	293	ALF	F1-AL	2.22	1.82	1.58
6	E	293	ALF	F1-AL	2.21	1.82	1.58
6	G	293	ALF	F1-AL	2.19	1.82	1.58
6	H	293	ALF	F1-AL	2.19	1.82	1.58
8	A	496	CFM	S3B-FE6	-2.12	2.31	2.33
8	C	496	CFM	MO1-S1B	2.09	2.34	2.31
11	G	291	ADP	C8-N7	-2.05	1.30	1.34
6	E	293	ALF	F3-AL	2.02	1.80	1.58
11	F	291	ADP	O4'-C1'	2.01	1.44	1.41

All (53) bond angle outliers are listed below:

Mol	Chain	Res	Type	Atoms	Z	Observed(°)	Ideal(°)
11	G	291	ADP	O4'-C1'-N9	7.17	115.11	108.44
11	E	291	ADP	O4'-C1'-C2'	-6.97	96.08	106.77
11	E	291	ADP	O4'-C1'-N9	6.93	114.89	108.44
11	H	291	ADP	O4'-C1'-N9	6.91	114.86	108.44
11	H	291	ADP	O4'-C1'-C2'	-6.79	96.36	106.77
11	F	291	ADP	O4'-C1'-C2'	-6.72	96.47	106.77
11	F	291	ADP	O4'-C1'-N9	6.68	114.65	108.44
11	G	291	ADP	O4'-C1'-C2'	-6.61	96.64	106.77
7	A	494	HCA	O6-C7-C3	6.00	121.61	112.89
7	C	494	HCA	O6-C7-C3	5.42	120.78	112.89
11	F	291	ADP	C2'-C3'-C4'	-4.88	92.93	102.65
11	H	291	ADP	C2'-C3'-C4'	-4.85	92.99	102.65
11	E	291	ADP	C2'-C3'-C4'	-4.82	93.06	102.65
11	G	291	ADP	C2'-C3'-C4'	-4.65	93.38	102.65
11	H	291	ADP	O3B-PB-O2B	-3.62	93.52	107.61
11	F	291	ADP	O3B-PB-O2B	-3.55	93.79	107.61
11	H	291	ADP	PA-O3A-PB	-3.53	121.34	131.68
11	E	291	ADP	O3B-PB-O2B	-3.50	93.97	107.61
11	G	291	ADP	O3B-PB-O2B	-3.50	93.96	107.61

Continued on next page...

Continued from previous page...

Mol	Chain	Res	Type	Atoms	Z	Observed(°)	Ideal(°)
11	E	291	ADP	PA-O3A-PB	-3.46	121.53	131.68
11	G	291	ADP	PA-O3A-PB	-3.43	121.62	131.68
11	F	291	ADP	PA-O3A-PB	-3.36	121.84	131.68
11	H	291	ADP	C4'-O4'-C1'	-3.17	106.30	109.75
7	C	494	HCA	O2-C1-O1	-3.14	115.31	123.30
7	A	494	HCA	O5-C7-C3	-3.10	117.93	122.20
11	F	291	ADP	C4'-O4'-C1'	-3.03	106.46	109.75
11	H	291	ADP	O3'-C3'-C2'	-3.03	101.97	111.83
11	G	291	ADP	O3'-C3'-C2'	-3.02	102.00	111.83
7	A	494	HCA	O2-C1-O1	-3.00	115.66	123.30
11	F	291	ADP	O3'-C3'-C2'	-2.96	102.19	111.83
11	G	291	ADP	C4'-O4'-C1'	-2.96	106.53	109.75
11	E	291	ADP	O3'-C3'-C2'	-2.89	102.42	111.83
11	G	291	ADP	C8-N9-C4	-2.78	104.78	106.90
11	E	291	ADP	C4'-O4'-C1'	-2.72	106.79	109.75
11	F	291	ADP	C8-N9-C4	-2.68	104.85	106.90
11	H	291	ADP	C8-N9-C4	-2.65	104.87	106.90
11	F	291	ADP	O5'-C5'-C4'	2.52	118.18	108.94
7	C	494	HCA	O5-C7-C3	-2.50	118.75	122.20
11	E	291	ADP	C8-N9-C4	-2.49	105.00	106.90
11	E	291	ADP	O5'-C5'-C4'	2.47	118.02	108.94
11	G	291	ADP	N3-C2-N1	2.46	130.76	128.71
11	G	291	ADP	O5'-C5'-C4'	2.42	117.82	108.94
11	E	291	ADP	N3-C2-N1	2.39	130.70	128.71
11	H	291	ADP	O5'-C5'-C4'	2.35	117.55	108.94
7	A	494	HCA	O4-C6-O3	-2.33	117.38	123.30
7	C	494	HCA	O4-C6-O3	-2.32	117.38	123.30
11	H	291	ADP	O3'-C3'-C4'	2.20	117.55	111.08
11	G	291	ADP	O3'-C3'-C4'	2.13	117.35	111.08
11	G	291	ADP	C2'-C1'-N9	-2.11	107.84	113.27
11	F	291	ADP	O3'-C3'-C4'	2.06	117.15	111.08
11	F	291	ADP	N3-C2-N1	2.05	130.42	128.71
11	H	291	ADP	N3-C2-N1	2.04	130.41	128.71
11	E	291	ADP	C2'-C1'-N9	-2.01	108.11	113.27

There are no chirality outliers.

There are no torsion outliers.

There are no ring outliers.

5.7 Other polymers ⓘ

There are no such residues in this entry.

5.8 Polymer linkage issues

There are no chain breaks in this entry.

6 Fit of model and data ⓘ

6.1 Protein, DNA and RNA chains ⓘ

EDS was not executed - this section will therefore be empty.

6.2 Non-standard residues in protein, DNA, RNA chains ⓘ

EDS was not executed - this section will therefore be empty.

6.3 Carbohydrates ⓘ

EDS was not executed - this section will therefore be empty.

6.4 Ligands ⓘ

EDS was not executed - this section will therefore be empty.

6.5 Other polymers ⓘ

EDS was not executed - this section will therefore be empty.