



Full wwPDB X-ray Structure Validation Report ⓘ

Feb 27, 2014 – 04:13 PM GMT

PDB ID : 1N2X
Title : Crystal Structure Analysis of TM0872, a Putative SAM-dependent Methyltransferase, Complexed with SAM
Authors : Miller, D.J.; Anderson, W.F.; Midwest Center for Structural Genomics (MCSG)
Deposited on : 2002-10-24
Resolution : 1.90 Å(reported)

This is a full wwPDB validation report for a publicly released PDB entry.
We welcome your comments at validation@mail.wwpdb.org
A user guide is available at <http://wwpdb.org/ValidationPDFNotes.html>

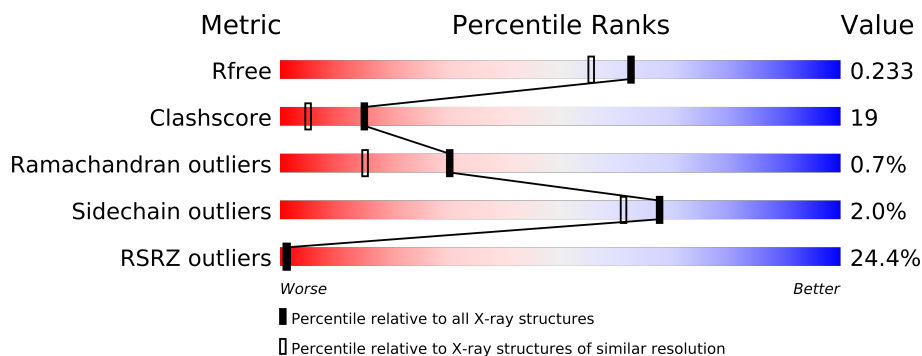
The following versions of software and data (see [references](#)) were used in the production of this report:

MolProbity : 4.02b-467
Mogul : 1.15 2013
Xtriage (Phenix) : dev-1323
EDS : stable22639
Percentile statistics : 21963
Refmac : 5.8.0049
CCP4 : 6.3.0 (Settle)
Ideal geometry (proteins) : Engh & Huber (2001)
Ideal geometry (DNA, RNA) : Parkinson et. al. (1996)
Validation Pipeline (wwPDB-VP) : stable22683

1 Overall quality at a glance


The reported resolution of this entry is 1.90 Å.

Percentile scores (ranging between 0-100) for global validation metrics of the entry are shown in the following graphic. The table shows the number of entries on which the scores are based.



Metric	Whole archive (#Entries)	Similar resolution (#Entries, resolution range(Å))
R_{free}	66092	3684 (1.90-1.90)
Clashscore	79885	4465 (1.90-1.90)
Ramachandran outliers	78287	4413 (1.90-1.90)
Sidechain outliers	78261	4414 (1.90-1.90)
RSRZ outliers	66119	3686 (1.90-1.90)

The table below summarises the geometric issues observed across the polymeric chains and their fit to the electron density. The red, orange, yellow and green segments on the lower bar indicate the fraction of residues that contain outliers for ≥ 3 , 2, 1 and 0 types of geometric quality criteria. The upper red bar (where present) indicates the fraction of residues that have poor fit to the electron density.

Mol	Chain	Length	Quality of chain
1	A	301	
1	B	301	

2 Entry composition

There are 4 unique types of molecules in this entry. The entry contains 5009 atoms, of which 0 are hydrogen and 0 are deuterium.

In the tables below, the ZeroOcc column contains the number of atoms modelled with zero occupancy, the AltConf column contains the number of residues with at least one atom in alternate conformation and the Trace column contains the number of residues modelled with at most 2 atoms.

- Molecule 1 is a protein called S-adenosyl-methyltransferasemraW.

Mol	Chain	Residues	Atoms						ZeroOcc	AltConf	Trace
1	A	287	Total	C	N	O	S	Se	0	5	0
			2392	1509	436	440	3	4			
1	B	278	Total	C	N	O	S	Se	0	0	0
			2204	1398	395	404	3	4			

There are 14 discrepancies between the modelled and reference sequences:

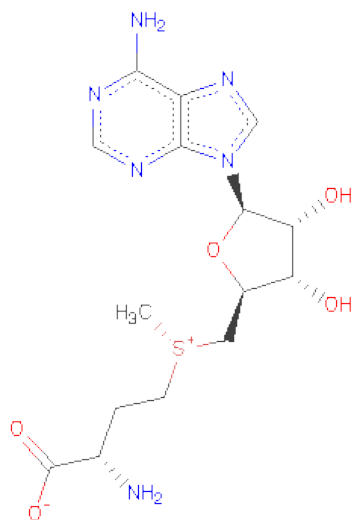
Chain	Residue	Modelled	Actual	Comment	Reference
A	-1	GLY	-	CLONING ARTIFACT	UNP Q9WZX6
A	0	HIS	-	CLONING ARTIFACT	UNP Q9WZX6
A	1	MSE	MET	MODIFIED RESIDUE	UNP Q9WZX6
A	12	MSE	MET	MODIFIED RESIDUE	UNP Q9WZX6
A	102	MSE	MET	MODIFIED RESIDUE	UNP Q9WZX6
A	128	MSE	MET	MODIFIED RESIDUE	UNP Q9WZX6
A	130	MSE	MET	MODIFIED RESIDUE	UNP Q9WZX6
B	-1	GLY	-	CLONING ARTIFACT	UNP Q9WZX6
B	0	HIS	-	CLONING ARTIFACT	UNP Q9WZX6
B	1	MSE	MET	MODIFIED RESIDUE	UNP Q9WZX6
B	12	MSE	MET	MODIFIED RESIDUE	UNP Q9WZX6
B	102	MSE	MET	MODIFIED RESIDUE	UNP Q9WZX6
B	128	MSE	MET	MODIFIED RESIDUE	UNP Q9WZX6
B	130	MSE	MET	MODIFIED RESIDUE	UNP Q9WZX6

- Molecule 2 is SULFATE ION (three-letter code: SO4) (formula: O₄S).



Mol	Chain	Residues	Atoms			ZeroOcc	AltConf
2	A	1	Total	O	S	0	0
			5	4	1		
2	B	1	Total	O	S	0	0
			5	4	1		

- Molecule 3 is S-ADENOSYLMETHIONINE (three-letter code: SAM) (formula: $C_{15}H_{22}N_6O_5S$).



Mol	Chain	Residues	Atoms				ZeroOcc	AltConf
3	A	1	Total	C	N	O	S	0
			27	15	6	5	1	
3	B	1	Total	C	N	O	S	0
			27	15	6	5	1	

- Molecule 4 is water.

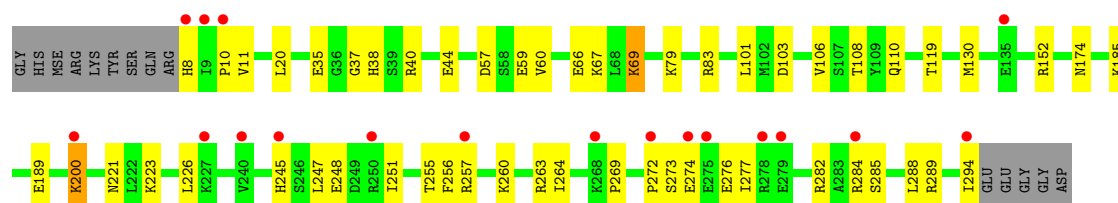
Mol	Chain	Residues	Atoms		ZeroOcc	AltConf
4	A	233	Total 233	O 233	0	0
4	B	116	Total 116	O 116	0	0

3 Residue-property plots

These plots are drawn for all protein, RNA and DNA chains in the entry. The first graphic for a chain summarises the proportions of errors displayed in the second graphic. The second graphic shows the sequence view annotated by issues in geometry and electron density. Residues are color-coded according to the number of geometric quality criteria for which they contain at least one outlier: green = 0, yellow = 1, orange = 2 and red = 3 or more. A red dot above a residue indicates a poor fit to the electron density ($RSRZ > 2$). Stretches of 2 or more consecutive residues without any outlier are shown as a green connector. Residues present in the sample, but not in the model, are shown in grey.

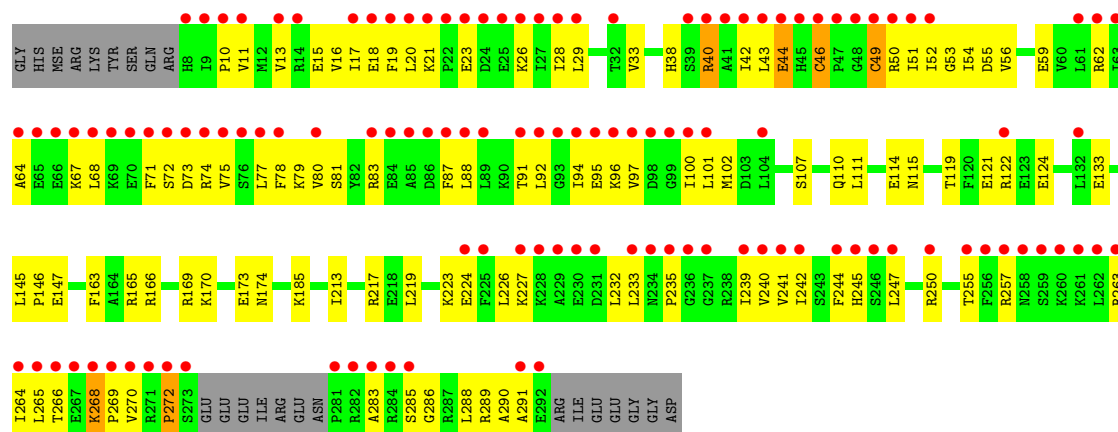
• Molecule 1: S-adenosyl-methyltransferasemraW

Chain A: 



• Molecule 1: S-adenosyl-methyltransferasemraW

Chain B: 



4 Data and refinement statistics

Property	Value	Source
Space group	P 21 3	Depositor
Cell constants a, b, c, α , β , γ	133.96Å 133.96Å 133.96Å 90.00° 90.00° 90.00°	Depositor
Resolution (Å)	19.97 – 1.90 19.97 – 1.90	Depositor EDS
% Data completeness (in resolution range)	99.9 (19.97-1.90) 100.0 (19.97-1.90)	Depositor EDS
R_{merge}	0.08	Depositor
R_{sym}	(Not available)	Depositor
$\langle I/\sigma(I) \rangle$ ¹	4.04 (at 1.90Å)	Xtriage
Refinement program	CNS 1.0	Depositor
R, R_{free}	0.205 , 0.226 0.214 , 0.233	Depositor DCC
R_{free} test set	3187 reflections (5.05%)	DCC
Wilson B-factor (Å ²)	23.5	Xtriage
Anisotropy	0.000	Xtriage
Bulk solvent k_{sol} (e/Å ³), B_{sol} (Å ²)	0.38 , 49.2	EDS
Estimated twinning fraction	0.021 for l,-k,h	Xtriage
L-test for twinning	$\langle L \rangle = 0.50$, $\langle L^2 \rangle = 0.34$	Xtriage
Outliers	0 of 63068 reflections	Xtriage
F_o, F_c correlation	0.94	EDS
Total number of atoms	5009	wwPDB-VP
Average B, all atoms (Å ²)	40.0	wwPDB-VP

Xtriage's analysis on translational NCS is as follows: *The largest off-origin peak in the Patterson function is 2.30% of the height of the origin peak. No significant pseudotranslation is detected.*

¹Intensities estimated from amplitudes.

5 Model quality i

5.1 Standard geometry i

Bond lengths and bond angles in the following residue types are not validated in this section: SO4, SAM

The Z score for a bond length (or angle) is the number of standard deviations the observed value is removed from the expected value. A bond length (or angle) with $|Z| > 5$ is considered an outlier worth inspection. RMSZ is the root-mean-square of all Z scores of the bond lengths (or angles).

Mol	Chain	Bond lengths		Bond angles	
		RMSZ	$\# Z > 5$	RMSZ	$\# Z > 5$
1	A	0.41	0/2421	0.63	0/3239
1	B	0.33	0/2231	0.55	1/2994 (0.0%)
All	All	0.38	0/4652	0.60	1/6233 (0.0%)

There are no bond length outliers.

All (1) bond angle outliers are listed below:

Mol	Chain	Res	Type	Atoms	Z	Observed(°)	Ideal(°)
1	B	272	PRO	N-CA-CB	5.43	109.81	103.30

There are no chirality outliers.

There are no planarity outliers.

5.2 Close contacts i

In the following table, the Non-H and H(model) columns list the number of non-hydrogen atoms and hydrogen atoms in the chain respectively. The H(added) column lists the number of hydrogens added by MolProbity. The Clashes column lists the number of clashes within the asymmetric unit, and the number in parentheses is this value normalized per 1000 atoms of the molecule in the chain. The Symm-Clashes column gives symmetry related clashes, in the same way as for the Clashes column.

Mol	Chain	Non-H	H(model)	H(added)	Clashes	Symm-Clashes
1	A	2392	0	2473	52	0
1	B	2204	0	2233	126	0
2	A	5	0	0	0	0
2	B	5	0	0	0	0
3	A	27	0	22	6	0
3	B	27	0	22	5	0

Continued on next page...

Continued from previous page...

Mol	Chain	Non-H	H(model)	H(added)	Clashes	Symm-Clashes
4	A	233	0	0	6	0
4	B	116	0	0	7	0
All	All	5009	0	4750	179	0

Clashscore is defined as the number of clashes calculated for the entry per 1000 atoms (including hydrogens) of the entry. The overall clashscore for this entry is 19.

All (179) close contacts within the same asymmetric unit are listed below.

Atom-1	Atom-2	Distance(Å)	Clash(Å)
1:B:119:THR:OG1	1:B:121:GLU:HG2	1.69	0.92
1:B:257:ARG:HA	1:B:264:ILE:HD11	1.50	0.91
1:B:270:VAL:HB	1:B:288:LEU:HB3	1.59	0.85
1:B:40:ARG:HA	1:B:40:ARG:NH2	1.89	0.85
1:B:163:PHE:HE1	1:B:166:ARG:HH21	1.26	0.83
1:A:59:GLU:HG3	4:A:538:HOH:O	1.79	0.81
1:A:38:HIS:HD2	3:A:401:SAM:HN1	1.27	0.81
1:A:260:LYS:HE2	1:A:260:LYS:HA	1.64	0.78
1:B:80:VAL:HG11	1:B:88:LEU:HD22	1.68	0.76
1:A:269:PRO:HG3	1:A:289:ARG:CZ	2.17	0.75
1:B:226:LEU:HB3	1:B:255:THR:HG21	1.66	0.75
1:B:40:ARG:HH11	1:B:68:LEU:HA	1.50	0.74
1:B:245:HIS:CD2	1:B:247:LEU:HB3	2.23	0.74
1:A:35:GLU:O	1:A:67[A]:LYS:HE2	1.87	0.73
1:B:269:PRO:HG3	1:B:289:ARG:HH12	1.51	0.73
1:B:163:PHE:HE1	1:B:166:ARG:NH2	1.86	0.73
1:A:10:PRO:HA	4:A:733:HOH:O	1.89	0.72
1:A:245:HIS:CD2	1:A:247:LEU:HB3	2.25	0.71
1:B:265:LEU:HG	1:B:291:ALA:HA	1.73	0.70
1:B:110:GLN:HA	1:B:114:GLU:HG3	1.71	0.70
1:A:245:HIS:HB3	1:A:248:GLU:HG3	1.73	0.70
1:A:226:LEU:HB3	1:A:255:THR:HG21	1.73	0.70
1:B:269:PRO:HG3	1:B:289:ARG:HH22	1.57	0.69
1:B:245:HIS:NE2	1:B:247:LEU:HB3	2.07	0.69
1:A:269:PRO:HG3	1:A:289:ARG:NH2	2.08	0.69
1:B:213:ILE:CG2	1:B:219:LEU:HD23	2.22	0.68
1:B:95:GLU:O	1:B:96:LYS:HG3	1.94	0.68
1:B:13:VAL:O	1:B:16:VAL:HG12	1.94	0.68
1:A:119:THR:HG22	4:A:575:HOH:O	1.95	0.67
1:B:40:ARG:NH1	1:B:68:LEU:HA	2.10	0.67
1:B:268:LYS:HD2	1:B:268:LYS:H	1.59	0.67
1:B:288:LEU:HD13	1:B:289:ARG:N	2.09	0.67
1:B:50:ARG:HG2	1:B:51:ILE:H	1.60	0.66

Continued on next page...

Continued from previous page...

Atom-1	Atom-2	Distance(Å)	Clash(Å)
1:B:40:ARG:HA	1:B:40:ARG:CZ	2.25	0.66
1:A:10:PRO:HG3	1:A:37:GLY:HA3	1.77	0.65
1:A:79[A]:LYS:HE2	4:A:515:HOH:O	1.97	0.65
1:B:119:THR:HG22	4:B:542:HOH:O	1.96	0.65
1:A:38:HIS:CD2	3:A:401:SAM:HN1	2.12	0.64
1:A:8:HIS:CE1	1:A:282:ARG:HH21	2.16	0.63
1:B:10:PRO:HB3	1:B:38:HIS:HD2	1.61	0.63
1:B:11:VAL:HG22	1:B:283:ALA:HB2	1.81	0.63
1:A:284:ARG:O	1:A:285:SER:HB2	1.99	0.63
1:B:174:ASN:HD21	1:B:185:LYS:HZ3	1.45	0.62
1:B:42:ILE:HB	1:B:51:ILE:HD11	1.81	0.62
1:A:245:HIS:NE2	1:A:247:LEU:HB3	2.15	0.62
1:B:174:ASN:HD21	1:B:185:LYS:NZ	1.98	0.62
1:B:213:ILE:HG21	1:B:219:LEU:HD23	1.81	0.61
1:A:40:ARG:O	1:A:44:GLU:HG3	2.01	0.61
1:B:92:LEU:HD13	1:B:92:LEU:O	2.00	0.61
1:B:247:LEU:HD12	1:B:250:ARG:HH12	1.66	0.60
1:B:29:LEU:CG	1:B:97:VAL:HG11	2.32	0.60
1:B:107:SER:OG	1:B:110:GLN:HG3	2.01	0.60
1:A:8:HIS:HB2	1:A:108:THR:OG1	2.01	0.59
3:A:401:SAM:HB1	4:A:705:HOH:O	2.01	0.59
1:B:10:PRO:HB3	1:B:38:HIS:CD2	2.37	0.59
1:A:83:ARG:HD2	1:A:221:ASN:HA	1.85	0.59
1:B:264:ILE:HG22	1:B:266:THR:H	1.68	0.59
1:B:29:LEU:HD21	1:B:97:VAL:HG11	1.84	0.59
1:B:102:MSE:HB2	1:B:241:VAL:HG22	1.83	0.59
1:B:16:VAL:HG22	1:B:20:LEU:HD12	1.86	0.58
1:B:87:PHE:O	1:B:91:THR:HG23	2.04	0.57
1:B:269:PRO:HG3	1:B:289:ARG:NH1	2.19	0.57
1:A:38:HIS:HD2	3:A:401:SAM:N	2.01	0.57
1:A:272:PRO:HA	1:A:276:GLU:OE1	2.05	0.57
1:B:240:VAL:HG22	1:B:290:ALA:HB2	1.85	0.56
1:A:174:ASN:HD21	1:A:185:LYS:NZ	2.03	0.56
1:B:67:LYS:C	1:B:68:LEU:HD12	2.26	0.56
1:B:54:ILE:HG22	1:B:78:PHE:HB2	1.87	0.56
1:A:185:LYS:O	1:A:189:GLU:HG3	2.06	0.55
1:B:213:ILE:HG23	1:B:219:LEU:HD23	1.88	0.55
1:B:100:ILE:HD12	1:B:233:LEU:HD21	1.87	0.55
1:B:247:LEU:HD13	1:B:250:ARG:HH22	1.72	0.55
1:B:223:LYS:O	1:B:227:LYS:HG3	2.07	0.55
1:B:17:ILE:HG13	1:B:18:GLU:N	2.21	0.55
1:A:108:THR:HG21	4:A:730:HOH:O	2.07	0.54

Continued on next page...

Continued from previous page...

Atom-1	Atom-2	Distance(Å)	Clash(Å)
1:B:28:ILE:HB	1:B:51:ILE:HG12	1.88	0.54
1:B:64:ALA:O	1:B:68:LEU:HD13	2.08	0.54
1:B:269:PRO:HG3	1:B:289:ARG:NH2	2.23	0.53
1:B:40:ARG:NH1	1:B:68:LEU:HG	2.23	0.53
1:B:163:PHE:CE1	1:B:166:ARG:NH2	2.67	0.53
1:B:38:HIS:ND1	1:B:101:LEU:HD21	2.24	0.53
1:B:11:VAL:HG21	1:B:244:PHE:HZ	1.73	0.52
1:B:83:ARG:NE	1:B:224:GLU:OE1	2.42	0.52
1:B:26:LYS:O	1:B:49:CYS:HA	2.09	0.52
1:B:50:ARG:HG2	1:B:51:ILE:N	2.25	0.52
1:B:165:ARG:NH1	4:B:575:HOH:O	2.29	0.51
1:B:122:ARG:HH11	1:B:122:ARG:HG2	1.76	0.50
1:A:263:ARG:HB2	1:A:294:ILE:HD13	1.92	0.50
1:B:29:LEU:CD2	1:B:97:VAL:HG11	2.41	0.50
1:B:242:ILE:HG12	1:B:288:LEU:CD2	2.41	0.50
1:A:277:ILE:HG21	1:A:284:ARG:NH1	2.27	0.50
1:B:240:VAL:HG22	1:B:290:ALA:CB	2.42	0.50
1:A:106:VAL:HG12	1:A:110:GLN:HB2	1.94	0.50
1:A:223:LYS:CG	1:A:251:ILE:HD13	2.41	0.49
1:B:67:LYS:O	1:B:68:LEU:HD12	2.12	0.49
1:B:55:ASP:HA	3:B:402:SAM:N3	2.27	0.49
1:B:53:GLY:O	1:B:77:LEU:HA	2.12	0.49
1:B:29:LEU:HG	1:B:97:VAL:HG11	1.95	0.49
1:B:169:ARG:O	1:B:173:GLU:HG3	2.12	0.49
1:A:257:ARG:HA	1:A:264:ILE:HD11	1.94	0.49
1:A:256:PHE:HB3	1:A:264:ILE:HG12	1.94	0.48
1:B:46:CYS:O	1:B:46:CYS:SG	2.71	0.48
1:B:242:ILE:HG12	1:B:288:LEU:HD23	1.94	0.48
1:B:29:LEU:HD23	1:B:52:ILE:HB	1.95	0.48
1:B:15:GLU:O	1:B:18:GLU:HB3	2.13	0.48
1:B:268:LYS:HD2	1:B:268:LYS:N	2.25	0.48
1:A:245:HIS:HB3	1:A:248:GLU:CG	2.41	0.48
1:B:244:PHE:HA	1:B:285:SER:O	2.13	0.48
1:A:284:ARG:O	1:A:285:SER:CB	2.61	0.48
1:A:11:VAL:O	1:A:38:HIS:HE1	1.97	0.47
1:B:40:ARG:HA	1:B:40:ARG:HH21	1.78	0.47
1:A:10:PRO:HG3	1:A:37:GLY:CA	2.43	0.47
1:B:50:ARG:HH21	1:B:52:ILE:HD11	1.80	0.47
1:B:115:ASN:OD1	1:B:124:GLU:HG2	2.14	0.47
1:B:71:PHE:HD2	1:B:74:ARG:HH21	1.62	0.47
1:A:57:ASP:HB3	1:A:60[A]:VAL:HG22	1.96	0.47
1:B:94:ILE:HG22	1:B:96:LYS:H	1.79	0.47

Continued on next page...

Continued from previous page...

Atom-1	Atom-2	Distance(Å)	Clash(Å)
1:B:288:LEU:C	1:B:288:LEU:HD13	2.35	0.46
1:B:38:HIS:O	1:B:42:ILE:HG13	2.15	0.46
1:B:55:ASP:OD2	3:B:402:SAM:H1'	2.16	0.46
1:A:277:ILE:HG21	1:A:284:ARG:HH11	1.81	0.46
1:B:59:GLU:HG2	1:B:62:ARG:HH21	1.81	0.46
1:B:247:LEU:CD1	1:B:250:ARG:HH22	2.29	0.46
1:B:40:ARG:HH22	1:B:43:LEU:HD12	1.80	0.45
1:B:110:GLN:HA	1:B:114:GLU:CG	2.42	0.45
1:B:16:VAL:HG13	1:B:17:ILE:N	2.31	0.45
1:B:64:ALA:O	1:B:68:LEU:HB2	2.17	0.45
1:B:29:LEU:CD2	1:B:52:ILE:HB	2.47	0.45
1:A:174:ASN:HD21	1:A:185:LYS:HZ3	1.64	0.45
1:B:269:PRO:CG	1:B:289:ARG:HH12	2.26	0.45
1:A:273:SER:OG	1:A:276:GLU:HG3	2.17	0.45
1:B:43:LEU:HD13	1:B:71:PHE:CB	2.46	0.45
1:B:269:PRO:CG	1:B:289:ARG:HH22	2.28	0.45
1:B:233:LEU:N	1:B:233:LEU:HD22	2.31	0.45
1:A:272:PRO:HB2	1:A:277:ILE:HD11	1.99	0.44
1:B:174:ASN:ND2	4:B:609:HOH:O	2.50	0.44
1:B:56:VAL:HG13	3:B:402:SAM:C2	2.47	0.44
1:B:111:LEU:O	1:B:111:LEU:HD13	2.17	0.44
1:A:223:LYS:HG3	1:A:251:ILE:HD13	1.99	0.44
1:A:8:HIS:CE1	1:A:282:ARG:HE	2.36	0.44
1:B:147:GLU:HG2	4:B:600:HOH:O	2.17	0.44
1:B:250:ARG:HB2	1:B:250:ARG:NH1	2.32	0.44
1:B:100:ILE:HB	1:B:239:ILE:HG13	1.99	0.44
1:B:219:LEU:O	1:B:223:LYS:HG3	2.17	0.43
1:A:200:LYS:HE3	1:A:200:LYS:O	2.18	0.43
1:B:40:ARG:HD3	1:B:44:GLU:OE2	2.18	0.43
1:B:51:ILE:O	1:B:75:VAL:HG23	2.19	0.43
1:A:8:HIS:NE2	1:A:282:ARG:NH2	2.56	0.43
1:B:81:SER:HA	3:B:402:SAM:N1	2.33	0.43
1:B:250:ARG:HH11	1:B:250:ARG:CB	2.32	0.43
1:A:66:GLU:OE2	1:A:69:LYS:HE3	2.19	0.43
1:B:33:VAL:O	3:B:402:SAM:HA	2.18	0.42
1:B:81:SER:C	1:B:83:ARG:H	2.21	0.42
1:B:72:SER:O	1:B:74:ARG:N	2.53	0.42
1:B:122:ARG:NH1	1:B:122:ARG:HG2	2.34	0.42
1:A:260:LYS:CA	1:A:260:LYS:HE2	2.42	0.42
1:B:244:PHE:CD1	1:B:286:GLY:HA2	2.54	0.42
1:B:166:ARG:NH1	4:B:580:HOH:O	2.53	0.42
1:B:217:ARG:NH1	4:B:612:HOH:O	2.53	0.41

Continued on next page...

Continued from previous page...

Atom-1	Atom-2	Distance(Å)	Clash(Å)
1:B:289:ARG:HG3	1:B:289:ARG:HH11	1.86	0.41
1:B:97:VAL:HG22	1:B:232:LEU:O	2.20	0.41
1:B:29:LEU:CD1	1:B:97:VAL:HG21	2.50	0.41
1:B:74:ARG:NH1	1:B:74:ARG:HB3	2.36	0.41
1:A:35:GLU:HG3	1:A:60[B]:VAL:CG2	2.50	0.41
1:B:55:ASP:O	1:B:79:LYS:HA	2.19	0.41
1:B:263:ARG:HG3	1:B:263:ARG:HH11	1.84	0.41
1:A:272:PRO:HB2	1:A:277:ILE:CD1	2.51	0.41
1:B:239:ILE:O	1:B:290:ALA:HA	2.21	0.41
1:B:54:ILE:HA	1:B:78:PHE:O	2.20	0.41
1:A:20[B]:LEU:HD11	1:A:101:LEU:HB2	2.02	0.41
1:A:103:ASP:O	3:A:401:SAM:H5'2	2.21	0.41
1:B:15:GLU:O	1:B:19:PHE:HD2	2.04	0.41
1:B:169:ARG:HA	1:B:169:ARG:HD2	1.96	0.41
1:A:288:LEU:C	1:A:288:LEU:HD23	2.41	0.41
1:B:122:ARG:CZ	4:B:615:HOH:O	2.69	0.40
1:B:170:LYS:HA	1:B:170:LYS:HD3	1.91	0.40
1:B:145:LEU:HA	1:B:146:PRO:HD3	1.96	0.40
1:A:130:MSE:SE	3:A:401:SAM:H8	2.71	0.40
1:B:19:PHE:O	1:B:21:LYS:HG3	2.21	0.40

There are no symmetry-related clashes.

5.3 Torsion angles

5.3.1 Protein backbone ⓘ

In the following table, the Percentiles column shows the percent Ramachandran outliers of the chain as a percentile score with respect to all X-ray entries followed by that with respect to entries of similar resolution. The Analysed column shows the number of residues for which the backbone conformation was analysed, and the total number of residues.

Mol	Chain	Analysed	Favoured	Allowed	Outliers	Percentiles	
1	A	290/301 (96%)	282 (97%)	8 (3%)	0	100	100
1	B	274/301 (91%)	249 (91%)	21 (8%)	4 (2%)	15	4
All	All	564/602 (94%)	531 (94%)	29 (5%)	4 (1%)	30	15

All (4) Ramachandran outliers are listed below:

Mol	Chain	Res	Type
1	B	73	ASP
1	B	272	PRO
1	B	23	GLU
1	B	235	PRO

5.3.2 Protein sidechains ⓘ

In the following table, the Percentiles column shows the percent sidechain outliers of the chain as a percentile score with respect to all X-ray entries followed by that with respect to entries of similar resolution. The Analysed column shows the number of residues for which the sidechain conformation was analysed, and the total number of residues.

Mol	Chain	Analysed	Rotameric	Outliers	Percentiles	
1	A	263/264 (100%)	259 (98%)	4 (2%)	76	73
1	B	234/264 (89%)	228 (97%)	6 (3%)	59	49
All	All	497/528 (94%)	487 (98%)	10 (2%)	68	61

All (10) residues with a non-rotameric sidechain are listed below:

Mol	Chain	Res	Type
1	A	69	LYS
1	A	152	ARG
1	A	200	LYS
1	A	274	GLU
1	B	40	ARG
1	B	44	GLU
1	B	46	CYS
1	B	49	CYS
1	B	133	GLU
1	B	268	LYS

Some sidechains can be flipped to improve hydrogen bonding and reduce clashes. All (7) such sidechains are listed below:

Mol	Chain	Res	Type
1	A	38	HIS
1	A	139	GLN
1	A	174	ASN
1	B	139	GLN
1	B	174	ASN
1	B	209	GLN
1	B	245	HIS

5.3.3 RNA ⓘ

There are no RNA chains in this entry.

5.4 Non-standard residues in protein, DNA, RNA chains ⓘ

There are no non-standard protein/DNA/RNA residues in this entry.

5.5 Carbohydrates ⓘ

There are no carbohydrates in this entry.

5.6 Ligand geometry ⓘ

4 ligands are modelled in this entry.

In the following table, the Counts columns list the number of bonds (or angles) for which Mogul statistics could be retrieved, the number of bonds (or angles) that are observed in the model and the number of bonds (or angles) that are defined in the chemical component dictionary. The Link column lists molecule types, if any, to which the group is linked. The Z score for a bond length (or angle) is the number of standard deviations the observed value is removed from the expected value. A bond length (or angle) with $|Z| > 2$ is considered an outlier worth inspection. RMSZ is the root-mean-square of all Z scores of the bond lengths (or angles).

Mol	Type	Chain	Res	Link	Bond lengths			Bond angles		
					Counts	RMSZ	$\# Z > 2$	Counts	RMSZ	$\# Z > 2$
3	SAM	A	401	-	26,29,29	0.81	0	38,42,42	0.85	1 (2%)
2	SO4	A	500	-	4,4,4	0.22	0	6,6,6	0.09	0
3	SAM	B	402	-	26,29,29	0.52	0	38,42,42	0.76	0
2	SO4	B	501	-	4,4,4	0.25	0	6,6,6	0.11	0

In the following table, the Chirals column lists the number of chiral outliers, the number of chiral centers analysed, the number of these observed in the model and the number defined in the chemical component dictionary. Similar counts are reported in the Torsion and Rings columns. '-' means no outliers of that kind were identified.

Mol	Type	Chain	Res	Link	Chirals	Torsions	Rings
3	SAM	A	401	-	-	0/13/33/33	0/1/3/3
2	SO4	A	500	-	-	0/0/0/0	0/0/0/0
3	SAM	B	402	-	-	0/13/33/33	0/1/3/3
2	SO4	B	501	-	-	0/0/0/0	0/0/0/0

There are no bond length outliers.

All (1) bond angle outliers are listed below:

Mol	Chain	Res	Type	Atoms	Z	Observed(°)	Ideal(°)
3	A	401	SAM	O4'-C1'-C2'	-2.64	102.73	106.77

There are no chirality outliers.

There are no torsion outliers.

There are no ring outliers.

5.7 Other polymers ⓘ

There are no such residues in this entry.

5.8 Polymer linkage issues

There are no chain breaks in this entry.

6 Fit of model and data ⓘ

6.1 Protein, DNA and RNA chains ⓘ

In the following table, the column labelled ‘#RSRZ> 2’ contains the number (and percentage) of RSRZ outliers, followed by percent RSRZ outliers for the chain as percentile scores relative to all X-ray entries and entries of similar resolution. The OWAB column contains the minimum, median, 95th percentile and maximum values of the occupancy-weighted average B-factor per residue. The column labelled ‘Q< 0.9’ lists the number of (and percentage) of residues with an average occupancy less than 0.9.

Mol	Chain	Analysed	<RSRZ>	#RSRZ>2		OWAB(Å ²)	Q<0.9
1	A	287/301 (95%)	0.28	18 (6%)	19 19	11, 22, 51, 70	0
1	B	278/301 (92%)	2.08	121 (43%)	1 0	14, 70, 86, 90	0
All	All	565/602 (93%)	1.17	139 (24%)	1 1	11, 30, 84, 90	0

All (139) RSRZ outliers are listed below:

Mol	Chain	Res	Type	RSRZ
1	B	9	ILE	11.2
1	B	281	PRO	10.0
1	B	71	PHE	9.8
1	B	47	PRO	9.7
1	B	235	PRO	9.6
1	B	19	PHE	9.4
1	B	50	ARG	7.8
1	B	73	ASP	7.8
1	B	285	SER	7.5
1	B	26	LYS	7.4
1	B	68	LEU	7.4
1	B	40	ARG	7.1
1	B	49	CYS	6.9
1	B	260	LYS	6.7
1	B	257	ARG	6.6
1	B	24	ASP	6.6
1	B	265	LEU	6.6
1	A	9	ILE	6.5
1	B	237	GLY	6.4
1	B	262	LEU	6.3
1	B	76	SER	6.0
1	B	263	ARG	5.9
1	A	279	GLU	5.9
1	B	48	GLY	5.9

Continued on next page...

Continued from previous page...

Mol	Chain	Res	Type	RSRZ
1	B	264	ILE	5.7
1	B	87	PHE	5.7
1	B	268	LYS	5.6
1	B	11	VAL	5.6
1	B	25	GLU	5.5
1	B	29	LEU	5.3
1	B	100	ILE	5.3
1	B	234	ASN	5.2
1	B	27	ILE	5.2
1	B	51	ILE	5.1
1	B	101	LEU	5.1
1	B	14	ARG	5.1
1	B	99	GLY	5.0
1	B	78	PHE	5.0
1	B	267	GLU	5.0
1	B	23	GLU	4.8
1	B	42	ILE	4.7
1	B	20	LEU	4.6
1	B	92	LEU	4.5
1	B	66	GLU	4.5
1	B	88	LEU	4.4
1	B	18	GLU	4.4
1	B	247	LEU	4.3
1	B	46	CYS	4.3
1	B	256	PHE	4.3
1	B	266	THR	4.3
1	B	70	GLU	4.3
1	B	17	ILE	4.3
1	B	269	PRO	4.3
1	B	21	LYS	4.2
1	B	89	LEU	4.2
1	B	245	HIS	4.2
1	B	10	PRO	4.1
1	B	83	ARG	4.1
1	B	236	GLY	4.1
1	B	261	LYS	4.0
1	B	258	ASN	3.8
1	B	13	VAL	3.8
1	B	22	PRO	3.8
1	A	278	ARG	3.8
1	B	291	ALA	3.7
1	B	67	LYS	3.7

Continued on next page...

Continued from previous page...

Mol	Chain	Res	Type	RSRZ
1	B	272	PRO	3.6
1	B	61	LEU	3.6
1	B	241	VAL	3.6
1	B	228	LYS	3.6
1	B	239	ILE	3.5
1	B	65	GLU	3.5
1	B	283	ALA	3.5
1	B	74	ARG	3.4
1	B	85	ALA	3.4
1	B	93	GLY	3.3
1	B	43	LEU	3.3
1	B	94	ILE	3.3
1	B	91	THR	3.3
1	B	69	LYS	3.2
1	B	52	ILE	3.2
1	B	62	ARG	3.2
1	B	233	LEU	3.2
1	B	259	SER	3.1
1	B	227	LYS	3.1
1	B	271	ARG	3.1
1	B	86	ASP	3.1
1	B	45	HIS	3.0
1	B	231	ASP	3.0
1	B	246	SER	3.0
1	B	250	ARG	2.9
1	A	275	GLU	2.9
1	A	8	HIS	2.8
1	B	84	GLU	2.8
1	B	75	VAL	2.8
1	B	41	ALA	2.8
1	A	284	ARG	2.8
1	B	97	VAL	2.7
1	A	268	LYS	2.7
1	B	64	ALA	2.7
1	B	273	SER	2.7
1	B	28	ILE	2.7
1	B	240	VAL	2.6
1	B	80	VAL	2.6
1	B	63	ILE	2.6
1	B	104	LEU	2.6
1	B	292	GLU	2.6
1	B	95	GLU	2.5

Continued on next page...

Continued from previous page...

Mol	Chain	Res	Type	RSRZ
1	B	77	LEU	2.5
1	B	270	VAL	2.4
1	B	8	HIS	2.4
1	B	242	ILE	2.4
1	A	274	GLU	2.4
1	A	257	ARG	2.3
1	A	10	PRO	2.3
1	B	244	PHE	2.3
1	B	229	ALA	2.3
1	B	284	ARG	2.3
1	A	240	VAL	2.3
1	B	122	ARG	2.3
1	B	44	GLU	2.3
1	B	230	GLU	2.3
1	B	96	LYS	2.3
1	B	32	THR	2.2
1	A	200	LYS	2.2
1	B	255	THR	2.2
1	A	245	HIS	2.2
1	B	98	ASP	2.2
1	B	39	SER	2.2
1	A	227	LYS	2.1
1	B	224	GLU	2.1
1	A	135	GLU	2.1
1	A	250	ARG	2.1
1	B	72	SER	2.1
1	B	132	LEU	2.0
1	B	225	PHE	2.0
1	B	282	ARG	2.0
1	A	294	ILE	2.0
1	A	272	PRO	2.0

6.2 Non-standard residues in protein, DNA, RNA chains ⓘ

There are no non-standard protein/DNA/RNA residues in this entry.

6.3 Carbohydrates ⓘ

There are no carbohydrates in this entry.

6.4 Ligands

In the following table, the Atoms column lists the number of modelled atoms in the group and the number defined in the chemical component dictionary. LLDF column lists the quality of electron density of the group with respect to its neighbouring residues in protein, DNA or RNA chains. The B-factors column lists the minimum, median, 95th percentile and maximum values of B factors of atoms in the group. The column labelled 'Q< 0.9' lists the number of atoms with occupancy less than 0.9.

Mol	Type	Chain	Res	Atoms	RSR	LLDF	B-factors(Å ²)	Q<0.9
3	SAM	B	402	27/27	0.19	0.06	60,62,67,67	0
2	SO4	B	501	5/5	0.12	-0.28	38,40,41,41	0
2	SO4	A	500	5/5	0.09	-0.59	40,41,43,45	0
3	SAM	A	401	27/27	0.07	-0.95	16,20,26,29	0

6.5 Other polymers

There are no such residues in this entry.