



Full wwPDB X-ray Structure Validation Report ⓘ

Feb 28, 2014 – 04:54 AM GMT

PDB ID : 3N2S
Title : Structure of NfrA1 nitroreductase from B. subtilis
Authors : Morera, S.; Gueguen-Chaignon, V.; Meyer, P.; Cortial, S.; Ouazzani, J.
Deposited on : 2010-05-19
Resolution : 1.95 Å(reported)

This is a full wwPDB validation report for a publicly released PDB entry.
We welcome your comments at validation@mail.wwpdb.org
A user guide is available at <http://wwpdb.org/ValidationPDFNotes.html>

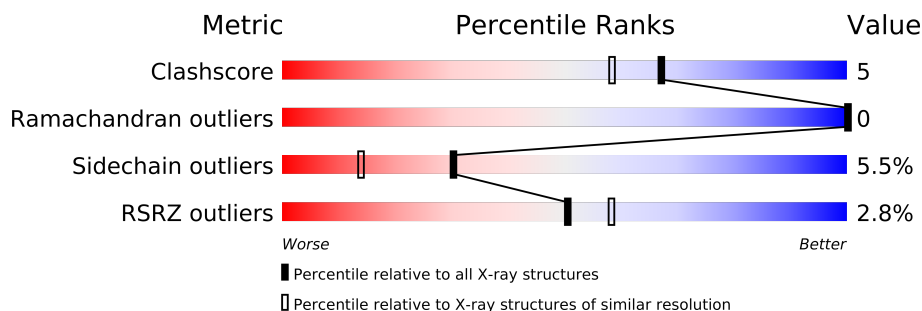
The following versions of software and data (see [references](#)) were used in the production of this report:

MolProbity : 4.02b-467
Mogul : 1.15 2013
Xtriage (Phenix) : dev-1323
EDS : stable22639
Percentile statistics : 21963
Refmac : 5.8.0049
CCP4 : 6.3.0 (Settle)
Ideal geometry (proteins) : Engh & Huber (2001)
Ideal geometry (DNA, RNA) : Parkinson et. al. (1996)
Validation Pipeline (wwPDB-VP) : stable22683

1 Overall quality at a glance

The reported resolution of this entry is 1.95 Å.

Percentile scores (ranging between 0-100) for global validation metrics of the entry are shown in the following graphic. The table shows the number of entries on which the scores are based.



Metric	Whole archive (#Entries)	Similar resolution (#Entries, resolution range(Å))
Clashscore	79885	1488 (1.96-1.96)
Ramachandran outliers	78287	1475 (1.96-1.96)
Sidechain outliers	78261	1475 (1.96-1.96)
RSRZ outliers	66119	1321 (1.96-1.96)

The table below summarises the geometric issues observed across the polymeric chains and their fit to the electron density. The red, orange, yellow and green segments on the lower bar indicate the fraction of residues that contain outliers for ≥ 3 , 2, 1 and 0 types of geometric quality criteria. The upper red bar (where present) indicates the fraction of residues that have poor fit to the electron density.

Mol	Chain	Length	Quality of chain
1	A	249	
1	B	249	
1	C	249	
1	D	249	

2 Entry composition i

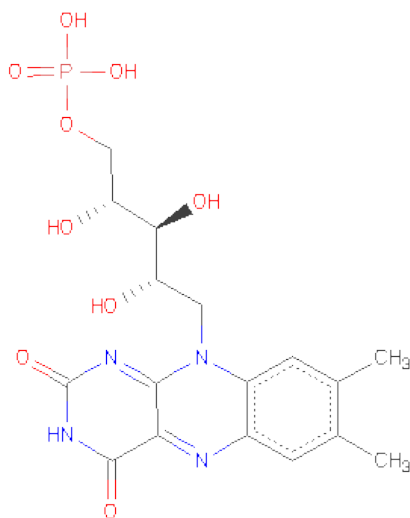
There are 4 unique types of molecules in this entry. The entry contains 8442 atoms, of which 0 are hydrogen and 0 are deuterium.

In the tables below, the ZeroOcc column contains the number of atoms modelled with zero occupancy, the AltConf column contains the number of residues with at least one atom in alternate conformation and the Trace column contains the number of residues modelled with at most 2 atoms.

- Molecule 1 is a protein called NADPH-dependent nitro/flavin reductase.

Mol	Chain	Residues	Atoms						ZeroOcc	AltConf	Trace
1	A	248	Total	C	N	O	S	Se	0	0	0
			1975	1238	341	388	2	6			
1	B	248	Total	C	N	O	S	Se	0	0	0
			1983	1244	343	388	2	6			
1	C	248	Total	C	N	O	S	Se	0	1	0
			1985	1246	343	388	2	6			
1	D	247	Total	C	N	O	S	Se	0	1	0
			1981	1245	342	386	2	6			

- Molecule 2 is FLAVIN MONONUCLEOTIDE (three-letter code: FMN) (formula: C₁₇H₂₁N₄O₉P).



Mol	Chain	Residues	Atoms					ZeroOcc	AltConf
2	A	1	Total	C	N	O	P	0	0
			31	17	4	9	1		
2	B	1	Total	C	N	O	P	0	0
			31	17	4	9	1		

Continued on next page...

Continued from previous page...

Mol	Chain	Residues	Atoms					ZeroOcc	AltConf
2	C	1	Total	C	N	O	P	0	0
			31	17	4	9	1		
2	D	1	Total	C	N	O	P	0	0
			31	17	4	9	1		

- Molecule 3 is CHLORIDE ION (three-letter code: CL) (formula: Cl).

Mol	Chain	Residues	Atoms		ZeroOcc	AltConf
3	B	1	Total	Cl	0	0
			1	1		
3	A	1	Total	Cl	0	0
			1	1		

- Molecule 4 is water.

Mol	Chain	Residues	Atoms		ZeroOcc	AltConf
4	A	102	Total	O	0	0
			102	102		
4	B	94	Total	O	0	0
			94	94		
4	C	100	Total	O	0	0
			100	100		
4	D	96	Total	O	0	0
			96	96		

3 Residue-property plots

These plots are drawn for all protein, RNA and DNA chains in the entry. The first graphic for a chain summarises the proportions of errors displayed in the second graphic. The second graphic shows the sequence view annotated by issues in geometry and electron density. Residues are color-coded according to the number of geometric quality criteria for which they contain at least one outlier: green = 0, yellow = 1, orange = 2 and red = 3 or more. A red dot above a residue indicates a poor fit to the electron density ($RSRZ > 2$). Stretches of 2 or more consecutive residues without any outlier are shown as a green connector. Residues present in the sample, but not in the model, are shown in grey.

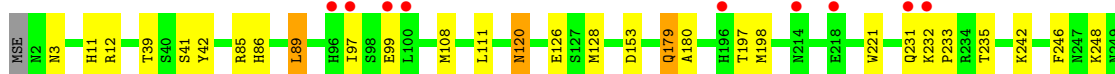
- Molecule 1: NADPH-dependent nitro/flavin reductase

Chain A: 



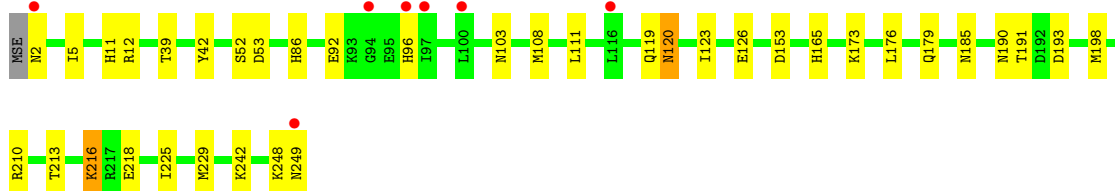
- Molecule 1: NADPH-dependent nitro/flavin reductase

Chain B: 



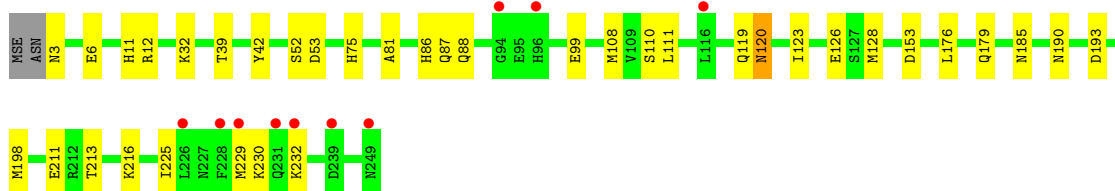
- Molecule 1: NADPH-dependent nitro/flavin reductase

Chain C: 



- Molecule 1: NADPH-dependent nitro/flavin reductase

Chain D: 



4 Data and refinement statistics

Property	Value	Source
Space group	P 1	Depositor
Cell constants a, b, c, α , β , γ	52.55Å 54.81Å 90.50Å 87.68° 87.64° 65.14°	Depositor
Resolution (Å)	19.42 – 1.95 28.88 – 1.95	Depositor EDS
% Data completeness (in resolution range)	(Not available) (19.42-1.95) 96.1 (28.88-1.95)	Depositor EDS
R_{merge}	0.04	Depositor
R_{sym}	0.04	Depositor
$\langle I/\sigma(I) \rangle$ ¹	12.69 (at 1.95Å)	Xtriage
Refinement program	BUSTER 2.8.0	Depositor
R, R_{free}	0.173 , 0.198 0.176 , (Not available)	Depositor DCC
R_{free} test set	No test flags present.	DCC
Wilson B-factor (Å ²)	19.1	Xtriage
Anisotropy	0.397	Xtriage
Bulk solvent k_{sol} (e/Å ³), B_{sol} (Å ²)	0.37 , 31.9	EDS
Estimated twinning fraction	0.017 for -k,-h,-l	Xtriage
L-test for twinning	$\langle L \rangle = 0.49$, $\langle L^2 \rangle = 0.32$	Xtriage
Outliers	0 of 64116 reflections	Xtriage
F_o, F_c correlation	0.95	EDS
Total number of atoms	8442	wwPDB-VP
Average B, all atoms (Å ²)	25.0	wwPDB-VP

Xtriage's analysis on translational NCS is as follows: *The largest off-origin peak in the Patterson function is 8.39% of the height of the origin peak. No significant pseudotranslation is detected.*

¹Intensities estimated from amplitudes.

5 Model quality

5.1 Standard geometry

Bond lengths and bond angles in the following residue types are not validated in this section: FMN, CL

The Z score for a bond length (or angle) is the number of standard deviations the observed value is removed from the expected value. A bond length (or angle) with $|Z| > 5$ is considered an outlier worth inspection. RMSZ is the root-mean-square of all Z scores of the bond lengths (or angles).

Mol	Chain	Bond lengths		Bond angles	
		RMSZ	# $ Z > 5$	RMSZ	# $ Z > 5$
1	A	0.50	0/2007	0.62	0/2707
1	B	0.50	0/2015	0.62	0/2715
1	C	0.49	0/2020	0.63	0/2722
1	D	0.49	0/2016	0.61	0/2715
All	All	0.50	0/8058	0.62	0/10859

There are no bond length outliers.

There are no bond angle outliers.

There are no chirality outliers.

There are no planarity outliers.

5.2 Close contacts

In the following table, the Non-H and H(model) columns list the number of non-hydrogen atoms and hydrogen atoms in the chain respectively. The H(added) column lists the number of hydrogens added by MolProbity. The Clashes column lists the number of clashes within the asymmetric unit, and the number in parentheses is this value normalized per 1000 atoms of the molecule in the chain. The Symm-Clashes column gives symmetry related clashes, in the same way as for the Clashes column.

Mol	Chain	Non-H	H(model)	H(added)	Clashes	Symm-Clashes
1	A	1975	0	1916	18	0
1	B	1983	0	1938	22	0
1	C	1985	0	1940	42	0
1	D	1981	0	1945	32	0
2	A	31	0	19	4	0
2	B	31	0	19	1	0
2	C	31	0	19	1	0
2	D	31	0	19	1	0

Continued on next page...

Continued from previous page...

Mol	Chain	Non-H	H(model)	H(added)	Clashes	Symm-Clashes
3	A	1	0	0	1	0
3	B	1	0	0	0	0
4	A	102	0	0	0	0
4	B	94	0	0	0	0
4	C	100	0	0	4	0
4	D	96	0	0	1	0
All	All	8442	0	7815	80	0

Clashscore is defined as the number of clashes calculated for the entry per 1000 atoms (including hydrogens) of the entry. The overall clashscore for this entry is 5.

All (80) close contacts within the same asymmetric unit are listed below.

Atom-1	Atom-2	Distance(Å)	Clash(Å)
3:A:250:CL:CL	1:C:216[B]:LYS:NZ	2.16	1.16
1:D:213:THR:O	1:D:216[B]:LYS:HG2	1.59	1.02
1:B:41:SER:H	1:C:216[A]:LYS:HZ3	1.36	0.73
1:A:11:HIS:HD2	1:A:126:GLU:OE2	1.74	0.71
1:D:11:HIS:HD2	1:D:126:GLU:OE2	1.74	0.70
1:C:11:HIS:HD2	1:C:126:GLU:OE2	1.75	0.69
1:D:190:ASN:HD22	1:D:193:ASP:H	1.40	0.69
1:B:11:HIS:HD2	1:B:126:GLU:OE2	1.76	0.69
1:A:123:ILE:HD11	1:B:120:ASN:HD22	1.59	0.67
1:C:190:ASN:HD22	1:C:193:ASP:H	1.43	0.67
1:B:41:SER:H	1:C:216[A]:LYS:NZ	1.93	0.66
1:A:229:MSE:HE1	1:B:86:HIS:HB3	1.80	0.62
1:C:52:SER:H	1:D:185:ASN:HD21	1.47	0.62
1:C:2:ASN:ND2	4:C:333:HOH:O	2.34	0.60
1:C:213:THR:O	1:C:216[A]:LYS:HD3	2.02	0.60
1:C:191:THR:HG22	1:D:88:GLN:NE2	2.19	0.58
1:C:185:ASN:HD21	1:D:53:ASP:H	1.50	0.58
1:C:210:ARG:HD3	1:C:218:GLU:HB3	1.85	0.58
1:B:11:HIS:HE1	2:B:400:FMN:O2P	1.88	0.57
1:A:123:ILE:HD11	1:B:120:ASN:ND2	2.19	0.57
1:D:3:ASN:HD22	1:D:6:GLU:H	1.51	0.57
1:D:11:HIS:HE1	2:D:400:FMN:O2P	1.87	0.56
1:C:185:ASN:HD21	1:D:52:SER:H	1.52	0.56
1:A:179:GLN:HE21	1:A:179:GLN:H	1.52	0.55
1:C:53:ASP:H	1:D:185:ASN:HD21	1.55	0.53
1:A:226:LEU:HD22	1:B:97:ILE:HD13	1.89	0.53
2:A:400:FMN:C10	1:C:216[B]:LYS:HD2	2.38	0.53
1:A:198:MSE:HE2	1:B:89:LEU:HD21	1.92	0.52
1:B:85:ARG:O	1:B:89:LEU:HD22	2.09	0.52

Continued on next page...

Continued from previous page...

Atom-1	Atom-2	Distance(Å)	Clash(Å)
1:D:213:THR:O	1:D:216[B]:LYS:CG	2.45	0.52
2:A:400:FMN:C4	1:C:216[B]:LYS:HE3	2.40	0.51
1:A:179:GLN:H	1:A:179:GLN:NE2	2.09	0.51
1:C:120:ASN:HD21	1:D:119:GLN:HE21	1.58	0.51
1:C:165:HIS:HE1	4:C:280:HOH:O	1.93	0.51
1:A:11:HIS:HE1	2:A:400:FMN:O3P	1.94	0.50
1:C:185:ASN:ND2	1:D:53:ASP:H	2.10	0.50
1:C:52:SER:H	1:D:185:ASN:ND2	2.09	0.49
1:C:173:LYS:NZ	4:C:385:HOH:O	2.43	0.49
1:D:176:LEU:HD22	1:D:198:MSE:HE1	1.94	0.49
1:C:123:ILE:HD11	1:D:120:ASN:HD21	1.77	0.49
1:C:53:ASP:H	1:D:185:ASN:ND2	2.10	0.49
1:D:81:ALA:HB1	1:D:110:SER:HB3	1.95	0.48
1:C:120:ASN:ND2	1:D:119:GLN:HE21	2.11	0.48
1:A:198:MSE:HE1	1:A:221:TRP:CE3	2.49	0.48
1:B:233:PRO:HB2	1:B:235:THR:HG23	1.95	0.48
1:A:98:SER:O	1:A:102:GLU:HG3	2.14	0.47
1:B:198:MSE:HE1	1:B:221:TRP:CE3	2.49	0.47
1:C:111:LEU:HD21	1:D:108:MSE:HG2	1.95	0.47
1:A:108:MSE:HG2	1:B:111:LEU:HD21	1.97	0.47
1:B:41:SER:N	1:C:216[A]:LYS:HZ3	2.10	0.47
1:C:213:THR:O	1:C:216[B]:LYS:HE2	2.14	0.47
1:C:198:MSE:HE3	4:C:287:HOH:O	2.15	0.47
1:B:242:LYS:HG2	1:B:248:LYS:HA	1.98	0.46
1:A:5:ILE:CD1	1:B:128:MSE:HE2	2.46	0.46
1:C:86:HIS:HD2	1:D:225:ILE:HD13	1.80	0.46
1:B:180:ALA:HB2	1:B:197:THR:HG21	1.97	0.46
1:C:11:HIS:HE1	2:C:400:FMN:O2P	1.99	0.46
1:A:198:MSE:HE2	1:B:89:LEU:HD11	1.98	0.45
1:C:119:GLN:HE21	1:D:120:ASN:HD21	1.64	0.45
1:C:5:ILE:HD11	1:D:128:MSE:HE2	1.98	0.45
1:C:176:LEU:HD22	1:C:198:MSE:HE1	1.99	0.45
1:C:5:ILE:CD1	1:D:128:MSE:HE2	2.47	0.45
1:C:120:ASN:HD21	1:D:123:ILE:HD11	1.82	0.44
1:A:2:ASN:ND2	1:A:5:ILE:H	2.15	0.44
1:C:120:ASN:HA	1:C:120:ASN:HD22	1.62	0.43
1:B:179:GLN:H	1:B:179:GLN:NE2	2.16	0.43
1:C:119:GLN:HE21	1:D:120:ASN:ND2	2.15	0.43
1:C:190:ASN:ND2	1:C:193:ASP:H	2.12	0.43
1:C:242:LYS:HB3	1:C:249:ASN:HB2	2.00	0.43
1:C:108:MSE:HG2	1:D:111:LEU:HD21	2.00	0.43
1:D:75:HIS:HD2	4:D:301:HOH:O	2.02	0.43

Continued on next page...

Continued from previous page...

Atom-1	Atom-2	Distance(Å)	Clash(Å)
2:A:400:FMN:C4A	1:C:216[A]:LYS:HE3	2.49	0.42
1:D:190:ASN:ND2	1:D:193:ASP:H	2.11	0.42
1:D:216[B]:LYS:H	1:D:216[B]:LYS:HG2	1.68	0.42
1:C:185:ASN:ND2	1:D:52:SER:H	2.17	0.42
1:A:198:MSE:HE1	1:A:221:TRP:CZ3	2.55	0.41
1:A:111:LEU:HD21	1:B:108:MSE:HG2	2.03	0.41
1:C:225:ILE:HD13	1:D:86:HIS:HD2	1.86	0.41
1:A:5:ILE:HD11	1:B:128:MSE:HE2	2.02	0.41
1:B:242:LYS:HA	1:B:246:PHE:O	2.21	0.40

There are no symmetry-related clashes.

5.3 Torsion angles

5.3.1 Protein backbone ⓘ

In the following table, the Percentiles column shows the percent Ramachandran outliers of the chain as a percentile score with respect to all X-ray entries followed by that with respect to entries of similar resolution. The Analysed column shows the number of residues for which the backbone conformation was analysed, and the total number of residues.

Mol	Chain	Analysed	Favoured	Allowed	Outliers	Percentiles	
1	A	246/249 (99%)	237 (96%)	9 (4%)	0	100	100
1	B	246/249 (99%)	235 (96%)	11 (4%)	0	100	100
1	C	247/249 (99%)	237 (96%)	10 (4%)	0	100	100
1	D	246/249 (99%)	238 (97%)	8 (3%)	0	100	100
All	All	985/996 (99%)	947 (96%)	38 (4%)	0	100	100

There are no Ramachandran outliers to report.

5.3.2 Protein sidechains ⓘ

In the following table, the Percentiles column shows the percent sidechain outliers of the chain as a percentile score with respect to all X-ray entries followed by that with respect to entries of similar resolution. The Analysed column shows the number of residues for which the sidechain conformation was analysed, and the total number of residues.

Mol	Chain	Analysed	Rotameric	Outliers	Percentiles	
1	A	216/212 (102%)	204 (94%)	12 (6%)	30	13

Continued on next page...

Continued from previous page...

Mol	Chain	Analysed	Rotameric	Outliers	Percentiles	
1	B	218/212 (103%)	207 (95%)	11 (5%)	34	16
1	C	218/212 (103%)	205 (94%)	13 (6%)	27	11
1	D	218/212 (103%)	205 (94%)	13 (6%)	27	11
All	All	870/848 (103%)	821 (94%)	49 (6%)	30	13

All (49) residues with a non-rotameric sidechain are listed below:

Mol	Chain	Res	Type
1	A	2	ASN
1	A	3	ASN
1	A	12	ARG
1	A	39	THR
1	A	42	TYR
1	A	95	GLU
1	A	120	ASN
1	A	153	ASP
1	A	179	GLN
1	A	212	ARG
1	A	216	LYS
1	A	229	MSE
1	B	3	ASN
1	B	12	ARG
1	B	39	THR
1	B	42	TYR
1	B	89	LEU
1	B	99	GLU
1	B	120	ASN
1	B	153	ASP
1	B	179	GLN
1	B	231	GLN
1	B	232	LYS
1	C	12	ARG
1	C	39	THR
1	C	42	TYR
1	C	92	GLU
1	C	96	HIS
1	C	103	ASN
1	C	120	ASN
1	C	153	ASP
1	C	179	GLN
1	C	216[A]	LYS

Continued on next page...

Continued from previous page...

Mol	Chain	Res	Type
1	C	216[B]	LYS
1	C	229	MSE
1	C	248	LYS
1	D	12	ARG
1	D	32	LYS
1	D	39	THR
1	D	42	TYR
1	D	87	GLN
1	D	99	GLU
1	D	120	ASN
1	D	153	ASP
1	D	179	GLN
1	D	211	GLU
1	D	229	MSE
1	D	230	LYS
1	D	232	LYS

Some sidechains can be flipped to improve hydrogen bonding and reduce clashes. All (35) such sidechains are listed below:

Mol	Chain	Res	Type
1	A	2	ASN
1	A	11	HIS
1	A	35	GLN
1	A	66	ASN
1	A	119	GLN
1	A	120	ASN
1	A	154	HIS
1	A	179	GLN
1	B	11	HIS
1	B	96	HIS
1	B	119	GLN
1	B	120	ASN
1	B	179	GLN
1	C	11	HIS
1	C	75	HIS
1	C	103	ASN
1	C	120	ASN
1	C	165	HIS
1	C	185	ASN
1	C	190	ASN
1	C	199	ASN
1	C	231	GLN

Continued on next page...

Continued from previous page...

Mol	Chain	Res	Type
1	C	247	ASN
1	D	3	ASN
1	D	11	HIS
1	D	35	GLN
1	D	75	HIS
1	D	88	GLN
1	D	103	ASN
1	D	120	ASN
1	D	185	ASN
1	D	190	ASN
1	D	199	ASN
1	D	231	GLN
1	D	247	ASN

5.3.3 RNA ⓘ

There are no RNA chains in this entry.

5.4 Non-standard residues in protein, DNA, RNA chains ⓘ

There are no non-standard protein/DNA/RNA residues in this entry.

5.5 Carbohydrates ⓘ

There are no carbohydrates in this entry.

5.6 Ligand geometry ⓘ

Of 6 ligands modelled in this entry, 2 are monoatomic - leaving 4 for Mogul analysis.

In the following table, the Counts columns list the number of bonds (or angles) for which Mogul statistics could be retrieved, the number of bonds (or angles) that are observed in the model and the number of bonds (or angles) that are defined in the chemical component dictionary. The Link column lists molecule types, if any, to which the group is linked. The Z score for a bond length (or angle) is the number of standard deviations the observed value is removed from the expected value. A bond length (or angle) with $|Z| > 2$ is considered an outlier worth inspection. RMSZ is the root-mean-square of all Z scores of the bond lengths (or angles).

Mol	Type	Chain	Res	Link	Bond lengths			Bond angles		
					Counts	RMSZ	$\# Z > 2$	Counts	RMSZ	$\# Z > 2$
2	FMN	A	400	-	33,33,33	2.20	10 (30%)	46,50,50	1.82	7 (15%)

Mol	Type	Chain	Res	Link	Bond lengths			Bond angles		
					Counts	RMSZ	# Z > 2	Counts	RMSZ	# Z > 2
2	FMN	B	400	-	33,33,33	2.02	7 (21%)	46,50,50	1.79	8 (17%)
2	FMN	C	400	-	33,33,33	2.06	4 (12%)	46,50,50	2.06	9 (19%)
2	FMN	D	400	-	33,33,33	2.25	11 (33%)	46,50,50	1.76	7 (15%)

In the following table, the Chirals column lists the number of chiral outliers, the number of chiral centers analysed, the number of these observed in the model and the number defined in the chemical component dictionary. Similar counts are reported in the Torsion and Rings columns. '-' means no outliers of that kind were identified.

Mol	Type	Chain	Res	Link	Chirals	Torsions	Rings
2	FMN	A	400	-	-	0/18/18/18	0/0/3/3
2	FMN	B	400	-	-	0/18/18/18	0/0/3/3
2	FMN	C	400	-	-	0/18/18/18	0/0/3/3
2	FMN	D	400	-	-	0/18/18/18	0/0/3/3

All (32) bond length outliers are listed below:

Mol	Chain	Res	Type	Atoms	Z	Observed(Å)	Ideal(Å)
2	A	400	FMN	C4A-C10	7.82	1.54	1.40
2	D	400	FMN	C4A-C10	7.50	1.53	1.40
2	C	400	FMN	C4A-C10	7.17	1.53	1.40
2	B	400	FMN	C4A-C10	6.60	1.52	1.40
2	C	400	FMN	C4-C4A	5.50	1.50	1.41
2	D	400	FMN	C5A-N5	4.59	1.42	1.35
2	B	400	FMN	C4-C4A	4.48	1.48	1.41
2	A	400	FMN	C4-C4A	4.44	1.48	1.41
2	D	400	FMN	C4-C4A	4.43	1.48	1.41
2	C	400	FMN	C9A-N10	4.28	1.45	1.38
2	B	400	FMN	C5A-N5	4.10	1.41	1.35
2	A	400	FMN	C5A-N5	4.08	1.41	1.35
2	B	400	FMN	C5'-C4'	3.29	1.56	1.51
2	A	400	FMN	C4'-C3'	3.02	1.59	1.53
2	D	400	FMN	C9A-N10	3.01	1.43	1.38
2	D	400	FMN	C1'-N10	-2.94	1.44	1.48
2	D	400	FMN	C4'-C3'	2.82	1.59	1.53
2	A	400	FMN	O2'-C2'	-2.76	1.37	1.43
2	A	400	FMN	C5'-C4'	2.59	1.55	1.51
2	A	400	FMN	C1'-C2'	2.54	1.54	1.51
2	D	400	FMN	C1'-C2'	2.54	1.54	1.51
2	B	400	FMN	C8M-C8	-2.46	1.45	1.51
2	A	400	FMN	C9A-N10	2.42	1.42	1.38
2	B	400	FMN	C8-C7	2.36	1.47	1.40

Continued on next page...

Continued from previous page...

Mol	Chain	Res	Type	Atoms	Z	Observed(Å)	Ideal(Å)
2	A	400	FMN	C9A-C5A	2.29	1.47	1.42
2	B	400	FMN	O4-C4	-2.25	1.20	1.24
2	A	400	FMN	C4A-N5	-2.23	1.31	1.36
2	D	400	FMN	C4A-N5	-2.19	1.31	1.36
2	D	400	FMN	C9-C8	2.10	1.43	1.37
2	C	400	FMN	C6-C7	2.09	1.43	1.37
2	D	400	FMN	C9A-C5A	2.05	1.46	1.42
2	D	400	FMN	C6-C7	2.00	1.43	1.37

All (31) bond angle outliers are listed below:

Mol	Chain	Res	Type	Atoms	Z	Observed(°)	Ideal(°)
2	C	400	FMN	C2-N1-C10	8.13	123.17	114.98
2	B	400	FMN	C4A-C10-N10	-7.83	116.60	120.51
2	A	400	FMN	C4A-C10-N10	-7.80	116.61	120.51
2	C	400	FMN	C4A-C10-N10	-7.01	117.01	120.51
2	D	400	FMN	C4A-C10-N10	-6.12	117.46	120.51
2	D	400	FMN	C2-N1-C10	6.01	121.03	114.98
2	A	400	FMN	C2-N1-C10	5.56	120.58	114.98
2	B	400	FMN	C2-N1-C10	5.38	120.40	114.98
2	C	400	FMN	O3P-P-O5'	3.10	115.20	106.65
2	A	400	FMN	C10-C4A-N5	2.98	124.08	120.45
2	C	400	FMN	C4A-C10-N1	-2.88	119.86	122.73
2	A	400	FMN	O2P-P-O5'	-2.73	99.10	106.65
2	C	400	FMN	N1-C10-N10	2.72	123.13	115.97
2	D	400	FMN	C10-C4A-N5	2.65	123.67	120.45
2	D	400	FMN	O3P-P-O5'	2.62	113.87	106.65
2	C	400	FMN	C4A-N5-C5A	2.58	119.59	116.69
2	B	400	FMN	C10-C4A-N5	2.46	123.44	120.45
2	B	400	FMN	O3P-P-O5'	2.42	113.33	106.65
2	B	400	FMN	C6-C5A-N5	-2.40	116.17	118.97
2	B	400	FMN	N1-C10-N10	2.39	122.25	115.97
2	A	400	FMN	N1-C10-N10	2.33	122.09	115.97
2	D	400	FMN	C6-C5A-N5	-2.31	116.28	118.97
2	C	400	FMN	C1'-N10-C9A	2.31	121.12	118.87
2	A	400	FMN	O2P-P-O1P	2.27	117.85	110.44
2	A	400	FMN	C2'-C1'-N10	-2.26	109.45	112.45
2	D	400	FMN	N1-C10-N10	2.20	121.75	115.97
2	D	400	FMN	C2'-C1'-N10	-2.20	109.53	112.45
2	B	400	FMN	O3P-P-O1P	2.16	117.51	110.44
2	C	400	FMN	C6-C5A-N5	-2.12	116.50	118.97
2	B	400	FMN	O2P-P-O1P	-2.02	103.82	110.44

Continued on next page...

Continued from previous page...

Mol	Chain	Res	Type	Atoms	Z	Observed(°)	Ideal(°)
2	C	400	FMN	C9A-N10-C10	-2.02	119.78	121.77

There are no chirality outliers.

There are no torsion outliers.

There are no ring outliers.

5.7 Other polymers ⓘ

There are no such residues in this entry.

5.8 Polymer linkage issues

There are no chain breaks in this entry.

6 Fit of model and data ⓘ

6.1 Protein, DNA and RNA chains ⓘ

In the following table, the column labelled ‘#RSRZ> 2’ contains the number (and percentage) of RSRZ outliers, followed by percent RSRZ outliers for the chain as percentile scores relative to all X-ray entries and entries of similar resolution. The OWAB column contains the minimum, median, 95th percentile and maximum values of the occupancy-weighted average B-factor per residue. The column labelled ‘Q< 0.9’ lists the number of (and percentage) of residues with an average occupancy less than 0.9.

Mol	Chain	Analysed	<RSRZ>	#RSRZ>2	OWAB(Å ²)	Q<0.9
1	A	248/249 (99%)	-0.12	2 (0%) 83 89	10, 20, 41, 60	0
1	B	248/249 (99%)	0.02	9 (3%) 41 47	10, 22, 51, 67	0
1	C	248/249 (99%)	-0.02	7 (2%) 50 58	10, 21, 46, 83	0
1	D	247/249 (99%)	0.02	10 (4%) 36 41	10, 21, 45, 88	0
All	All	991/996 (99%)	-0.02	28 (2%) 50 58	10, 21, 48, 88	0

All (28) RSRZ outliers are listed below:

Mol	Chain	Res	Type	RSRZ
1	C	249	ASN	6.8
1	B	96	HIS	4.5
1	D	231	GLN	4.2
1	C	97	ILE	4.0
1	D	228	PHE	4.0
1	C	96	HIS	3.9
1	D	232	LYS	3.9
1	B	97	ILE	3.7
1	D	96	HIS	3.5
1	B	232	LYS	3.5
1	B	99	GLU	3.0
1	D	249	ASN	2.7
1	A	229	MSE	2.7
1	C	94	GLY	2.6
1	D	229	MSE	2.6
1	A	214	ASN	2.6
1	D	239	ASP	2.5
1	D	226	LEU	2.5
1	C	2	ASN	2.5
1	B	231	GLN	2.4
1	C	116	LEU	2.4

Continued on next page...

Continued from previous page...

Mol	Chain	Res	Type	RSRZ
1	B	214	ASN	2.4
1	B	218	GLU	2.4
1	D	116	LEU	2.3
1	B	196	HIS	2.3
1	D	94	GLY	2.1
1	B	100	LEU	2.0
1	C	100	LEU	2.0

6.2 Non-standard residues in protein, DNA, RNA chains ⓘ

There are no non-standard protein/DNA/RNA residues in this entry.

6.3 Carbohydrates ⓘ

There are no carbohydrates in this entry.

6.4 Ligands ⓘ

In the following table, the Atoms column lists the number of modelled atoms in the group and the number defined in the chemical component dictionary. LLDF column lists the quality of electron density of the group with respect to its neighbouring residues in protein, DNA or RNA chains. The B-factors column lists the minimum, median, 95th percentile and maximum values of B factors of atoms in the group. The column labelled 'Q< 0.9' lists the number of atoms with occupancy less than 0.9.

Mol	Type	Chain	Res	Atoms	RSR	LLDF	B-factors(Å ²)	Q<0.9
2	FMN	A	400	31/31	0.10	-0.07	10,11,13,13	0
2	FMN	B	400	31/31	0.11	-0.13	12,13,15,15	0
2	FMN	D	400	31/31	0.10	-0.22	11,13,14,14	0
2	FMN	C	400	31/31	0.09	-0.26	13,13,15,15	0
3	CL	A	250	1/1	0.06	-1.51	22,22,22,22	0
3	CL	B	250	1/1	0.06	-1.76	27,27,27,27	0

6.5 Other polymers ⓘ

There are no such residues in this entry.