



Full wwPDB X-ray Structure Validation Report

Mar 12, 2014 – 05:22 PM GMT

PDB ID : 4N2R
Title : Crystal Structure of the alpha-L-arabinofuranosidaseUmAbf62A from Ustilago maydis in complex with L-arabinofuranose
Authors : Siguier, B.; Dumon, C.; Mourey, L.; Tranier, S.
Deposited on : 2013-10-06
Resolution : 1.20 Å(reported)

This is a full wwPDB validation report for a publicly released PDB entry.
We welcome your comments at validation@mail.wwpdb.org
A user guide is available at <http://wwpdb.org/ValidationPDFNotes.html>

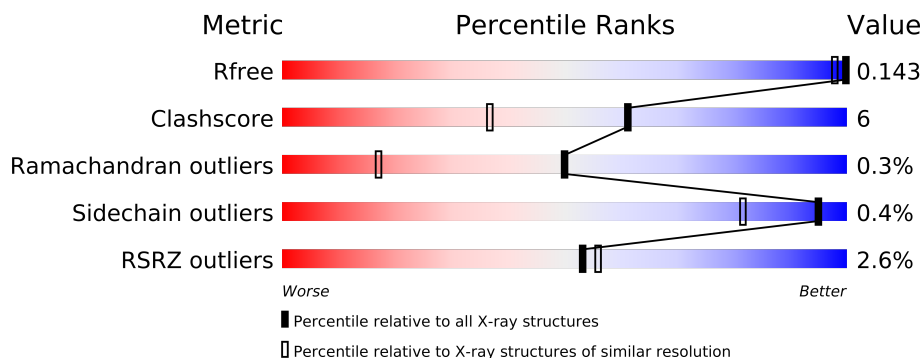
The following versions of software and data (see [references](#)) were used in the production of this report:

MolProbity : 4.02b-467
Mogul : 1.16 November 2013
Xtriage (Phenix) : dev-1323
EDS : trunk22714
Percentile statistics : 21963
Refmac : 5.8.0049
CCP4 : 6.3.0 (Settle)
Ideal geometry (proteins) : Engh & Huber (2001)
Ideal geometry (DNA, RNA) : Parkinson et. al. (1996)
Validation Pipeline (wwPDB-VP) : trunk22714

1 Overall quality at a glance


The reported resolution of this entry is 1.20 Å.

Percentile scores (ranging between 0-100) for global validation metrics of the entry are shown in the following graphic. The table shows the number of entries on which the scores are based.



Metric	Whole archive (#Entries)	Similar resolution (#Entries, resolution range(Å))
R_{free}	66092	1038 (1.26-1.14)
Clashscore	79885	1158 (1.26-1.14)
Ramachandran outliers	78287	1106 (1.26-1.14)
Sidechain outliers	78261	1104 (1.26-1.14)
RSRZ outliers	66119	1038 (1.26-1.14)

The table below summarises the geometric issues observed across the polymeric chains and their fit to the electron density. The red, orange, yellow and green segments on the lower bar indicate the fraction of residues that contain outliers for ≥ 3 , 2, 1 and 0 types of geometric quality criteria. The upper red bar (where present) indicates the fraction of residues that have poor fit to the electron density.

Mol	Chain	Length	Quality of chain
1	A	334	

The following table lists non-polymeric compounds that are outliers for geometric or electron-density-fit criteria:

Mol	Type	Chain	Res	Geometry	Electron density
3	FUB	A	402[A]	-	X
4	AHR	A	403[B]	-	X
5	TRS	A	404	-	X

2 Entry composition

There are 6 unique types of molecules in this entry. The entry contains 3025 atoms, of which 0 are hydrogen and 0 are deuterium.

In the tables below, the ZeroOcc column contains the number of atoms modelled with zero occupancy, the AltConf column contains the number of residues with at least one atom in alternate conformation and the Trace column contains the number of residues modelled with at most 2 atoms.

- Molecule 1 is a protein called alpha-L-arabinofuranosidaseUmAbf62A.

Mol	Chain	Residues	Atoms					ZeroOcc	AltConf	Trace
			Total	C	N	O	S			
1	A	306	2558	1638	426	484	10	0	26	0

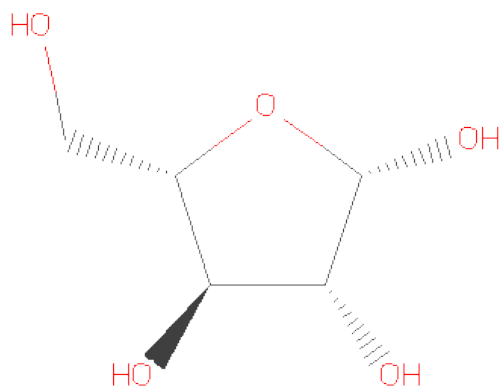
There are 23 discrepancies between the modelled and reference sequences:

Chain	Residue	Modelled	Actual	Comment	Reference
A	312	GLY	-	EXPRESSION TAG	UNP Q4P6F4
A	313	LEU	-	EXPRESSION TAG	UNP Q4P6F4
A	314	GLU	-	EXPRESSION TAG	UNP Q4P6F4
A	315	GLN	-	EXPRESSION TAG	UNP Q4P6F4
A	316	LYS	-	EXPRESSION TAG	UNP Q4P6F4
A	317	LEU	-	EXPRESSION TAG	UNP Q4P6F4
A	318	ILE	-	EXPRESSION TAG	UNP Q4P6F4
A	319	SER	-	EXPRESSION TAG	UNP Q4P6F4
A	320	GLU	-	EXPRESSION TAG	UNP Q4P6F4
A	321	GLU	-	EXPRESSION TAG	UNP Q4P6F4
A	322	ASP	-	EXPRESSION TAG	UNP Q4P6F4
A	323	LEU	-	EXPRESSION TAG	UNP Q4P6F4
A	324	ASN	-	EXPRESSION TAG	UNP Q4P6F4
A	325	SER	-	EXPRESSION TAG	UNP Q4P6F4
A	326	ALA	-	EXPRESSION TAG	UNP Q4P6F4
A	327	VAL	-	EXPRESSION TAG	UNP Q4P6F4
A	328	ASP	-	EXPRESSION TAG	UNP Q4P6F4
A	329	HIS	-	EXPRESSION TAG	UNP Q4P6F4
A	330	HIS	-	EXPRESSION TAG	UNP Q4P6F4
A	331	HIS	-	EXPRESSION TAG	UNP Q4P6F4
A	332	HIS	-	EXPRESSION TAG	UNP Q4P6F4
A	333	HIS	-	EXPRESSION TAG	UNP Q4P6F4
A	334	HIS	-	EXPRESSION TAG	UNP Q4P6F4

- Molecule 2 is CALCIUM ION (three-letter code: CA) (formula: Ca).

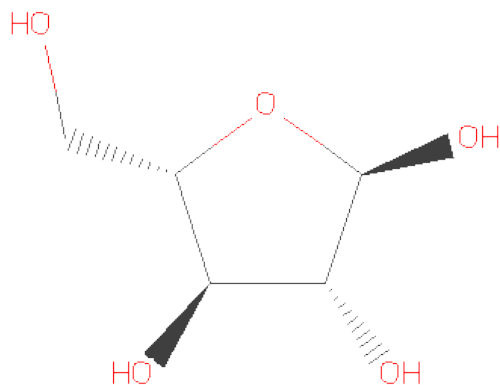
Mol	Chain	Residues	Atoms		ZeroOcc	AltConf
2	A	1	Total	Ca	0	0
			1	1		

- Molecule 3 is SUGAR (BETA-L-ARABINOFURANOSE) (three-letter code: FUB) (formula: $C_5H_{10}O_5$).



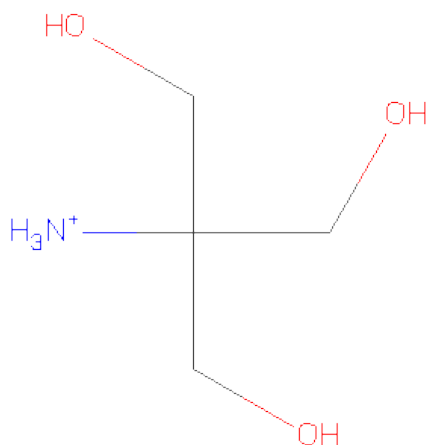
Mol	Chain	Residues	Atoms			ZeroOcc	AltConf
3	A	1	Total	C	O	0	1
			10	5	5		

- Molecule 4 is SUGAR (ALPHA-L-ARABINOFURANOSE) (three-letter code: AHR) (formula: $C_5H_{10}O_5$).



Mol	Chain	Residues	Atoms			ZeroOcc	AltConf
4	A	1	Total	C	O	0	1
			10	5	5		

- Molecule 5 is 2-AMINO-2-HYDROXYMETHYL-PROPANE-1,3-DIOL (three-letter code: TRS) (formula: $C_4H_{12}NO_3$).



Mol	Chain	Residues	Atoms				ZeroOcc	AltConf
5	A	1	Total	C	N	O	0	0
			8	4	1	3		

- Molecule 6 is water.

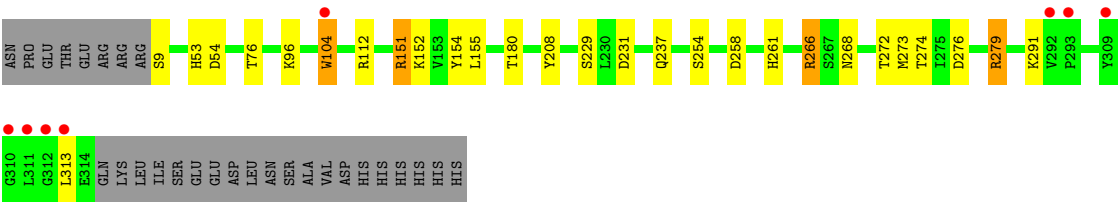
Mol	Chain	Residues	Atoms		ZeroOcc	AltConf
6	A	438	Total	O	0	1
			438	438		

3 Residue-property plots i

These plots are drawn for all protein, RNA and DNA chains in the entry. The first graphic for a chain summarises the proportions of errors displayed in the second graphic. The second graphic shows the sequence view annotated by issues in geometry and electron density. Residues are color-coded according to the number of geometric quality criteria for which they contain at least one outlier: green = 0, yellow = 1, orange = 2 and red = 3 or more. A red dot above a residue indicates a poor fit to the electron density (RSRZ > 2). Stretches of 2 or more consecutive residues without any outlier are shown as a green connector. Residues present in the sample, but not in the model, are shown in grey.

- Molecule 1: alpha-L-arabinofuranosidaseUmAbf62A

Chain A: 



4 Data and refinement statistics

Property	Value	Source
Space group	P 21 21 21	Depositor
Cell constants a, b, c, α , β , γ	60.08Å 66.07Å 68.10Å 90.00° 90.00° 90.00°	Depositor
Resolution (Å)	47.42 – 1.20 47.42 – 1.20	Depositor EDS
% Data completeness (in resolution range)	95.8 (47.42-1.20) 95.9 (47.42-1.20)	Depositor EDS
R_{merge}	(Not available)	Depositor
R_{sym}	0.03	Depositor
$\langle I/\sigma(I) \rangle$ ¹	9.34 (at 1.20Å)	Xtriage
Refinement program	REFMAC 5.7.0032	Depositor
R, R_{free}	0.100 , 0.130 0.116 , 0.143	Depositor DCC
R_{free} test set	4098 reflections (5.28%)	DCC
Wilson B-factor (Å ²)	7.8	Xtriage
Anisotropy	0.339	Xtriage
Bulk solvent k_{sol} (e/Å ³), B_{sol} (Å ²)	0.38 , 41.5	EDS
Estimated twinning fraction	0.017 for -h,l,k	Xtriage
L-test for twinning	$\langle L \rangle = 0.48$, $\langle L^2 \rangle = 0.31$	Xtriage
Outliers	0 of 81763 reflections	Xtriage
F_o, F_c correlation	0.97	EDS
Total number of atoms	3025	wwPDB-VP
Average B, all atoms (Å ²)	11.0	wwPDB-VP

Xtriage's analysis on translational NCS is as follows: *The largest off-origin peak in the Patterson function is 4.91% of the height of the origin peak. No significant pseudotranslation is detected.*

¹Intensities estimated from amplitudes.

5 Model quality

5.1 Standard geometry

Bond lengths and bond angles in the following residue types are not validated in this section: AHR, CA, FUB, TRS

The Z score for a bond length (or angle) is the number of standard deviations the observed value is removed from the expected value. A bond length (or angle) with $|Z| > 5$ is considered an outlier worth inspection. RMSZ is the root-mean-square of all Z scores of the bond lengths (or angles).

Mol	Chain	Bond lengths		Bond angles	
		RMSZ	$\# Z > 5$	RMSZ	$\# Z > 5$
1	A	1.02	7/2670 (0.3%)	1.12	16/3638 (0.4%)

Chiral center outliers are detected by calculating the chiral volume of a chiral center and verifying if the center is modelled as a planar moiety or with the opposite hand. A planarity outlier is detected by checking planarity of atoms in a peptide group, atoms in a mainchain group or atoms of a sidechain that are expected to be planar.

Mol	Chain	#Chirality outliers	#Planarity outliers
1	A	0	1

All (7) bond length outliers are listed below:

Mol	Chain	Res	Type	Atoms	Z	Observed(Å)	Ideal(Å)
1	A	254	SER	CB-OG	6.54	1.50	1.42
1	A	151	ARG	NE-CZ	5.84	1.40	1.33
1	A	9	SER	CB-OG	5.73	1.49	1.42
1	A	104	TRP	CE3-CZ3	-5.41	1.29	1.38
1	A	237	GLN	CG-CD	-5.24	1.39	1.51
1	A	208	TYR	CE2-CZ	5.16	1.45	1.38
1	A	268	ASN	CG-OD1	5.13	1.35	1.24

All (16) bond angle outliers are listed below:

Mol	Chain	Res	Type	Atoms	Z	Observed(°)	Ideal(°)
1	A	151	ARG	NE-CZ-NH1	13.31	126.96	120.30
1	A	279[A]	ARG	NE-CZ-NH2	-10.14	115.23	120.30
1	A	279[B]	ARG	NE-CZ-NH2	-10.14	115.23	120.30
1	A	266	ARG	NE-CZ-NH1	6.88	123.74	120.30
1	A	208	TYR	CB-CG-CD1	-6.54	117.08	121.00
1	A	96[A]	LYS	CD-CE-NZ	6.38	126.37	111.70

Continued on next page...

Continued from previous page...

Mol	Chain	Res	Type	Atoms	Z	Observed(°)	Ideal(°)
1	A	96[B]	LYS	CD-CE-NZ	6.38	126.37	111.70
1	A	112[A]	ARG	NE-CZ-NH2	-6.18	117.21	120.30
1	A	112[B]	ARG	NE-CZ-NH2	-6.18	117.21	120.30
1	A	155	LEU	CB-CG-CD1	-5.86	101.05	111.00
1	A	151	ARG	NH1-CZ-NH2	-5.77	113.05	119.40
1	A	279[A]	ARG	NE-CZ-NH1	5.62	123.11	120.30
1	A	279[B]	ARG	NE-CZ-NH1	5.62	123.11	120.30
1	A	258	ASP	CB-CG-OD1	5.50	123.25	118.30
1	A	208	TYR	CG-CD2-CE2	-5.21	117.13	121.30
1	A	313	LEU	CB-CG-CD1	-5.11	102.32	111.00

There are no chirality outliers.

All (1) planarity outliers are listed below:

Mol	Chain	Res	Type	Group
1	A	266	ARG	Sidechain

5.2 Close contacts ⓘ

In the following table, the Non-H and H(model) columns list the number of non-hydrogen atoms and hydrogen atoms in the chain respectively. The H(added) column lists the number of hydrogens added by MolProbity. The Clashes column lists the number of clashes within the asymmetric unit, and the number in parentheses is this value normalized per 1000 atoms of the molecule in the chain. The Symm-Clashes column gives symmetry related clashes, in the same way as for the Clashes column.

Mol	Chain	Non-H	H(model)	H(added)	Clashes	Symm-Clashes
1	A	2558	0	0	15	0
2	A	1	0	0	0	0
3	A	10	0	0	0	0
4	A	10	0	0	0	0
5	A	8	0	0	1	0
6	A	438	0	0	8	0
All	All	3025	0	0	15	0

Clashscore is defined as the number of clashes calculated for the entry per 1000 atoms (including hydrogens) of the entry. The overall clashscore for this entry is 6.

All (15) close contacts within the same asymmetric unit are listed below.

Atom-1	Atom-2	Distance(Å)	Clash(Å)
1:A:272:THR:C	1:A:273[B]:MET:CA	2.44	0.84

Continued on next page...

Continued from previous page...

Atom-1	Atom-2	Distance(Å)	Clash(Å)
1:A:273[B]:MET:CA	1:A:274:THR:N	2.43	0.81
1:A:104:TRP:N	6:A:1031:HOH:O	2.17	0.77
1:A:273[B]:MET:CE	6:A:808:HOH:O	2.33	0.76
1:A:276:ASP:OD2	1:A:279[A]:ARG:NE	2.20	0.74
1:A:151:ARG:NH2	6:A:1053[A]:HOH:O	2.37	0.58
1:A:104:TRP:O	6:A:1031:HOH:O	2.17	0.57
1:A:76[B]:THR:CG2	6:A:984:HOH:O	2.57	0.53
1:A:229[B]:SER:OG	1:A:231:ASP:OD1	2.27	0.52
1:A:151:ARG:CZ	6:A:1053[A]:HOH:O	2.60	0.49
1:A:53:HIS:CD2	1:A:54:ASP:O	2.67	0.48
1:A:53:HIS:CE1	6:A:876:HOH:O	2.68	0.44
1:A:152:LYS:CE	1:A:154[A]:TYR:OH	2.66	0.44
1:A:152:LYS:CE	6:A:1053[A]:HOH:O	2.67	0.42
1:A:180:THR:OG1	5:A:404:TRS:C3	2.68	0.41

There are no symmetry-related clashes.

5.3 Torsion angles

5.3.1 Protein backbone ⓘ

In the following table, the Percentiles column shows the percent Ramachandran outliers of the chain as a percentile score with respect to all X-ray entries followed by that with respect to entries of similar resolution. The Analysed column shows the number of residues for which the backbone conformation was analysed, and the total number of residues.

Mol	Chain	Analysed	Favoured	Allowed	Outliers	Percentiles
1	A	331/334 (99%)	316 (96%)	14 (4%)	1 (0%)	50 17

All (1) Ramachandran outliers are listed below:

Mol	Chain	Res	Type
1	A	261	HIS

5.3.2 Protein sidechains ⓘ

In the following table, the Percentiles column shows the percent sidechain outliers of the chain as a percentile score with respect to all X-ray entries followed by that with respect to entries of similar resolution. The Analysed column shows the number of residues for which the sidechain conformation was analysed, and the total number of residues.

Mol	Chain	Analysed	Rotameric	Outliers	Percentiles
1	A	279/279 (100%)	278 (100%)	1 (0%)	95 81

All (1) residues with a non-rotameric sidechain are listed below:

Mol	Chain	Res	Type
1	A	291	LYS

Some sidechains can be flipped to improve hydrogen bonding and reduce clashes. There are no such sidechains identified.

5.3.3 RNA ⓘ

There are no RNA chains in this entry.

5.4 Non-standard residues in protein, DNA, RNA chains ⓘ

There are no non-standard protein/DNA/RNA residues in this entry.

5.5 Carbohydrates ⓘ

There are no carbohydrates in this entry.

5.6 Ligand geometry ⓘ

Of 4 ligands modelled in this entry, 1 is monoatomic - leaving 3 for Mogul analysis.

In the following table, the Counts columns list the number of bonds (or angles) for which Mogul statistics could be retrieved, the number of bonds (or angles) that are observed in the model and the number of bonds (or angles) that are defined in the chemical component dictionary. The Link column lists molecule types, if any, to which the group is linked. The Z score for a bond length (or angle) is the number of standard deviations the observed value is removed from the expected value. A bond length (or angle) with $|Z| > 2$ is considered an outlier worth inspection. RMSZ is the root-mean-square of all Z scores of the bond lengths (or angles).

Mol	Type	Chain	Res	Link	Bond lengths			Bond angles		
					Counts	RMSZ	$\# Z > 2$	Counts	RMSZ	$\# Z > 2$
3	FUB	A	402[A]	-	10,10,10	1.91	2 (20%)	14,14,14	2.80	5 (35%)
4	AHR	A	403[B]	-	10,10,10	0.74	0	14,14,14	3.34	6 (42%)
5	TRS	A	404	-	7,7,7	2.80	2 (28%)	9,9,9	3.92	6 (66%)

In the following table, the Chirals column lists the number of chiral outliers, the number of chiral centers analysed, the number of these observed in the model and the number defined in the chemical component dictionary. Similar counts are reported in the Torsion and Rings columns. '-' means no outliers of that kind were identified.

Mol	Type	Chain	Res	Link	Chirals	Torsions	Rings
3	FUB	A	402[A]	-	-	0/2/18/18	0/1/1/1
4	AHR	A	403[B]	-	-	0/2/18/18	0/1/1/1
5	TRS	A	404	-	-	0/9/9/9	0/0/0/0

All (4) bond length outliers are listed below:

Mol	Chain	Res	Type	Atoms	Z	Observed(Å)	Ideal(Å)
5	A	404	TRS	O2-C2	-6.49	1.21	1.42
3	A	402[A]	FUB	C1'-C2'	3.59	1.55	1.52
3	A	402[A]	FUB	O1'-C1'	3.43	1.52	1.39
5	A	404	TRS	O3-C3	-2.18	1.35	1.42

All (17) bond angle outliers are listed below:

Mol	Chain	Res	Type	Atoms	Z	Observed(°)	Ideal(°)
4	A	403[B]	AHR	O4'-C1'-C2'	10.40	114.45	104.81
3	A	402[A]	FUB	O4'-C1'-C2'	-6.37	98.90	104.81
5	A	404	TRS	C3-C-C2	-6.01	97.77	110.78
3	A	402[A]	FUB	O1'-C1'-O4'	5.35	118.50	111.27
5	A	404	TRS	O1-C1-C	4.99	121.39	111.28
5	A	404	TRS	O3-C3-C	-4.97	101.19	111.28
5	A	404	TRS	O2-C2-C	4.79	120.99	111.28
5	A	404	TRS	C2-C-N	4.58	116.41	108.10
4	A	403[B]	AHR	O1'-C1'-O4'	-4.56	105.12	111.27
3	A	402[A]	FUB	O4'-C4'-C5'	3.97	117.81	109.15
3	A	402[A]	FUB	C1'-O4'-C4'	2.87	113.68	107.63
5	A	404	TRS	C3-C-N	2.84	113.24	108.10
4	A	403[B]	AHR	O2'-C2'-C3'	2.79	120.85	111.83
3	A	402[A]	FUB	O2'-C2'-C3'	2.73	120.65	111.83
4	A	403[B]	AHR	O4'-C4'-C3'	2.30	109.83	105.16
4	A	403[B]	AHR	O5'-C5'-C4'	-2.18	103.79	111.37
4	A	403[B]	AHR	C1'-O4'-C4'	-2.17	103.05	107.63

There are no chirality outliers.

There are no torsion outliers.

There are no ring outliers.

5.7 Other polymers ⓘ

There are no such residues in this entry.

5.8 Polymer linkage issues

There are no chain breaks in this entry.

6 Fit of model and data ⓘ

6.1 Protein, DNA and RNA chains ⓘ

In the following table, the column labelled ‘#RSRZ> 2’ contains the number (and percentage) of RSRZ outliers, followed by percent RSRZ outliers for the chain as percentile scores relative to all X-ray entries and entries of similar resolution. The OWAB column contains the minimum, median, 95th percentile and maximum values of the occupancy-weighted average B-factor per residue. The column labelled ‘Q< 0.9’ lists the number of (and percentage) of residues with an average occupancy less than 0.9.

Mol	Chain	Analysed	<RSRZ>	#RSRZ>2	OWAB(Å ²)	Q<0.9
1	A	306/334 (91%)	-0.42	8 (2%) 53 56	4, 8, 21, 55	0

All (8) RSRZ outliers are listed below:

Mol	Chain	Res	Type	RSRZ
1	A	311	LEU	7.1
1	A	310	GLY	3.3
1	A	293	PRO	3.1
1	A	104	TRP	3.0
1	A	312	GLY	2.8
1	A	292	VAL	2.8
1	A	309	TYR	2.5
1	A	313	LEU	2.4

6.2 Non-standard residues in protein, DNA, RNA chains ⓘ

There are no non-standard protein/DNA/RNA residues in this entry.

6.3 Carbohydrates ⓘ

There are no carbohydrates in this entry.

6.4 Ligands ⓘ

In the following table, the Atoms column lists the number of modelled atoms in the group and the number defined in the chemical component dictionary. LLDF column lists the quality of electron density of the group with respect to its neighbouring residues in protein, DNA or RNA chains. The B-factors column lists the minimum, median, 95th percentile and maximum values of B factors of atoms in the group. The column labelled ‘Q< 0.9’ lists the number of atoms with occupancy less than 0.9.

Mol	Type	Chain	Res	Atoms	RSR	LLDF	B-factors(\AA^2)	Q<0.9
5	TRS	A	404	8/8	0.18	23.22	4,10,29,36	0
4	AHR	A	403[B]	10/10	0.16	12.59	14,22,26,27	10
3	FUB	A	402[A]	10/10	0.16	12.24	6,11,16,16	10
2	CA	A	401	1/1	0.03	-3.62	4,4,4,4	0

6.5 Other polymers ⓘ

There are no such residues in this entry.