



Full wwPDB X-ray Structure Validation Report

Feb 26, 2014 – 07:09 PM GMT

PDB ID : 4N4M
Title : Kuenenia stuttgartiensis hydroxylamine oxidoreductase soaked in phenyl hydrazine
Authors : Maalcke, W.J.; Dietl, A.; Marritt, S.J.; Butt, J.N.; Jetten, M.S.M.; Keltjens, J.T.; Barends, T.R.M.B.; Kartal, B.
Deposited on : 2013-10-08
Resolution : 2.10 Å(reported)

This is a full wwPDB validation report for a publicly released PDB entry.
We welcome your comments at validation@mail.wwpdb.org
A user guide is available at <http://wwpdb.org/ValidationPDFNotes.html>

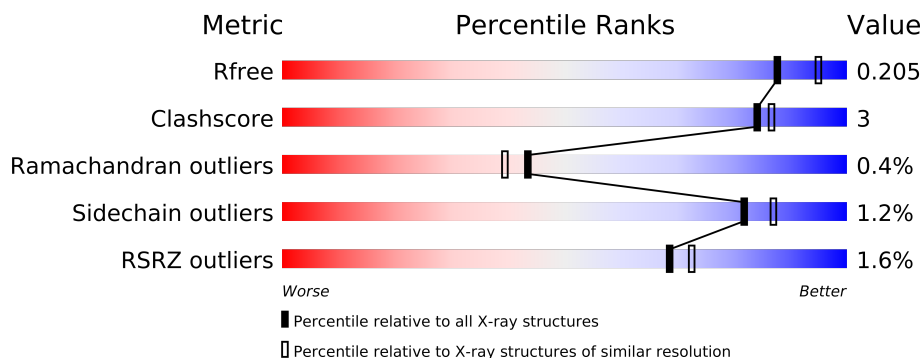
The following versions of software and data (see [references](#)) were used in the production of this report:

MolProbity : 4.02b-467
Mogul : 1.15 2013
Xtriage (Phenix) : dev-1323
EDS : stable22639
Percentile statistics : 21963
Refmac : 5.8.0049
CCP4 : 6.3.0 (Settle)
Ideal geometry (proteins) : Engh & Huber (2001)
Ideal geometry (DNA, RNA) : Parkinson et. al. (1996)
Validation Pipeline (wwPDB-VP) : stable22683

1 Overall quality at a glance

The reported resolution of this entry is 2.10 Å.

Percentile scores (ranging between 0-100) for global validation metrics of the entry are shown in the following graphic. The table shows the number of entries on which the scores are based.



Metric	Whole archive (#Entries)	Similar resolution (#Entries, resolution range(Å))
R_{free}	66092	3012 (2.10-2.10)
Clashscore	79885	3649 (2.10-2.10)
Ramachandran outliers	78287	3610 (2.10-2.10)
Sidechain outliers	78261	3611 (2.10-2.10)
RSRZ outliers	66119	3013 (2.10-2.10)

The table below summarises the geometric issues observed across the polymeric chains and their fit to the electron density. The red, orange, yellow and green segments on the lower bar indicate the fraction of residues that contain outliers for ≥ 3 , 2, 1 and 0 types of geometric quality criteria. The upper red bar (where present) indicates the fraction of residues that have poor fit to the electron density.

Mol	Chain	Length	Quality of chain
1	A	500	

The following table lists non-polymeric compounds that are outliers for geometric or electron-density-fit criteria:

Mol	Type	Chain	Res	Geometry	Electron density
2	PO4	A	602	-	X
2	PO4	A	604	-	X
3	EDO	A	610	-	X

2 Entry composition i

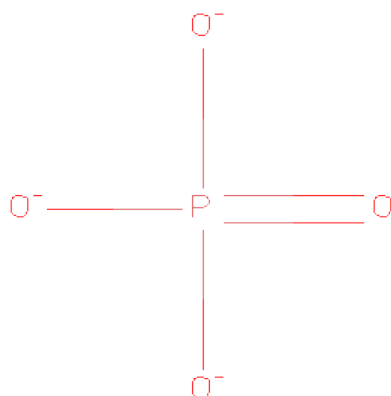
There are 7 unique types of molecules in this entry. The entry contains 4596 atoms, of which 0 are hydrogen and 0 are deuterium.

In the tables below, the ZeroOcc column contains the number of atoms modelled with zero occupancy, the AltConf column contains the number of residues with at least one atom in alternate conformation and the Trace column contains the number of residues modelled with at most 2 atoms.

- Molecule 1 is a protein called hydroxylamine oxidoreductase.

Mol	Chain	Residues	Atoms					ZeroOcc	AltConf	Trace
1	A	494	Total	C	N	O	S	0	1	0
			3930	2471	700	728	31			

- Molecule 2 is PHOSPHATE ION (three-letter code: PO4) (formula: O₄P).



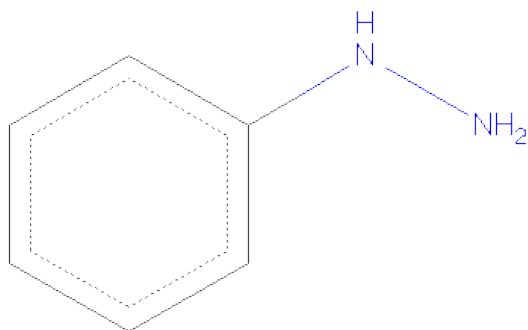
Mol	Chain	Residues	Atoms			ZeroOcc	AltConf
2	A	1	Total	O	P	0	0
			5	4	1		
2	A	1	Total	O	P	0	0
			5	4	1		
2	A	1	Total	O	P	0	0
			5	4	1		
2	A	1	Total	O	P	0	0
			5	4	1		

- Molecule 3 is 1,2-ETHANEDIOL (three-letter code: EDO) (formula: C₂H₆O₂).



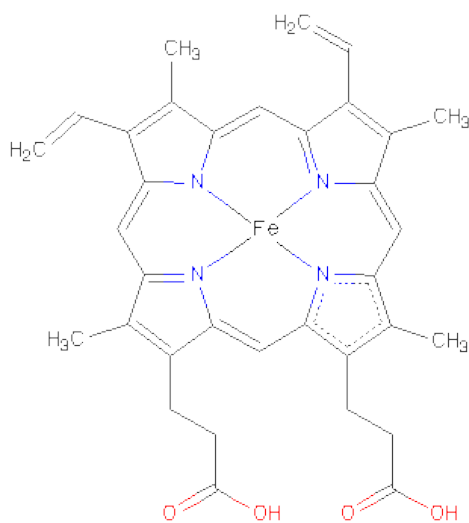
Mol	Chain	Residues	Atoms			ZeroOcc	AltConf
3	A	1	Total	C	O	0	0
			4	2	2		
3	A	1	Total	C	O	0	0
			4	2	2		
3	A	1	Total	C	O	0	0
			4	2	2		
3	A	1	Total	C	O	0	0
			4	2	2		
3	A	1	Total	C	O	0	0
			4	2	2		
3	A	1	Total	C	O	0	0
			4	2	2		

- Molecule 4 is 1-PHENYLHYDRAZINE (three-letter code: PHZ) (formula: C₆H₈N₂).



Mol	Chain	Residues	Atoms				ZeroOcc	AltConf
4	A	1	Total	C			0	0
			6	6				

- Molecule 5 is PROTOPORPHYRIN IX CONTAINING FE (three-letter code: HEM) (formula: $C_{34}H_{32}FeN_4O_4$).



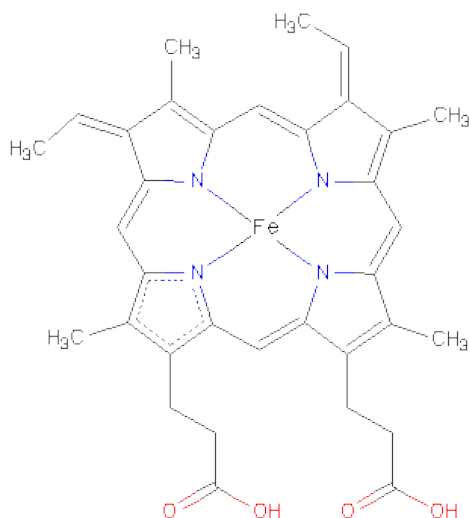
Mol	Chain	Residues	Atoms					ZeroOcc	AltConf
5	A	1	Total	C	Fe	N	O	0	0
			43	34	1	4	4		
5	A	1	Total	C	Fe	N	O	0	0
			43	34	1	4	4		

Continued on next page...

Continued from previous page...

Mol	Chain	Residues	Atoms					ZeroOcc	AltConf
5	A	1	Total	C	Fe	N	O	0	0
			43	34	1	4	4		
5	A	1	Total	C	Fe	N	O	0	0
			43	34	1	4	4		
5	A	1	Total	C	Fe	N	O	0	0
			43	34	1	4	4		
5	A	1	Total	C	Fe	N	O	0	0
			43	34	1	4	4		
5	A	1	Total	C	Fe	N	O	0	0
			43	34	1	4	4		

- Molecule 6 is HEME C (three-letter code: HEC) (formula: $C_{34}H_{34}FeN_4O_4$).



Mol	Chain	Residues	Atoms					ZeroOcc	AltConf
6	A	1	Total	C	Fe	N	O	0	0
			43	34	1	4	4		

- Molecule 7 is water.

Mol	Chain	Residues	Atoms		ZeroOcc	AltConf
7	A	268	Total	O	0	0
			268	268		

3 Residue-property plots

These plots are drawn for all protein, RNA and DNA chains in the entry. The first graphic for a chain summarises the proportions of errors displayed in the second graphic. The second graphic shows the sequence view annotated by issues in geometry and electron density. Residues are color-coded according to the number of geometric quality criteria for which they contain at least one outlier: green = 0, yellow = 1, orange = 2 and red = 3 or more. A red dot above a residue indicates a poor fit to the electron density ($RSRZ > 2$). Stretches of 2 or more consecutive residues without any outlier are shown as a green connector. Residues present in the sample, but not in the model, are shown in grey.

- Molecule 1: hydroxylamine oxidoreductase

Chain A: 



4 Data and refinement statistics

Property	Value	Source
Space group	P 21 3	Depositor
Cell constants a, b, c, α , β , γ	130.26Å 130.26Å 130.26Å 90.00° 90.00° 90.00°	Depositor
Resolution (Å)	46.05 – 2.10 43.42 – 2.10	Depositor EDS
% Data completeness (in resolution range)	100.0 (46.05-2.10) 100.0 (43.42-2.10)	Depositor EDS
R_{merge}	0.07	Depositor
R_{sym}	(Not available)	Depositor
$\langle I/\sigma(I) \rangle$ ¹	3.51 (at 2.10Å)	Xtriage
Refinement program	REFMAC 5.5.0102	Depositor
R, R_{free}	0.180 , 0.197 0.182 , 0.205	Depositor DCC
R_{free} test set	2068 reflections (5.04%)	DCC
Wilson B-factor (Å ²)	29.2	Xtriage
Anisotropy	0.000	Xtriage
Bulk solvent k_{sol} (e/Å ³), B_{sol} (Å ²)	0.35 , 29.6	EDS
Estimated twinning fraction	0.038 for l,-k,h	Xtriage
L-test for twinning	$\langle L \rangle = 0.48$, $\langle L^2 \rangle = 0.31$	Xtriage
Outliers	0 of 43163 reflections	Xtriage
F_o, F_c correlation	0.95	EDS
Total number of atoms	4596	wwPDB-VP
Average B, all atoms (Å ²)	28.0	wwPDB-VP

Xtriage's analysis on translational NCS is as follows: *The largest off-origin peak in the Patterson function is 2.31% of the height of the origin peak. No significant pseudotranslation is detected.*

¹Intensities estimated from amplitudes.

5 Model quality

5.1 Standard geometry

Bond lengths and bond angles in the following residue types are not validated in this section: PHZ, PO4, EDO, HEM, HEC

The Z score for a bond length (or angle) is the number of standard deviations the observed value is removed from the expected value. A bond length (or angle) with $|Z| > 5$ is considered an outlier worth inspection. RMSZ is the root-mean-square of all Z scores of the bond lengths (or angles).

Mol	Chain	Bond lengths		Bond angles	
		RMSZ	$\# Z > 5$	RMSZ	$\# Z > 5$
1	A	0.35	0/4044	0.52	0/5472

Chiral center outliers are detected by calculating the chiral volume of a chiral center and verifying if the center is modelled as a planar moiety or with the opposite hand. A planarity outlier is detected by checking planarity of atoms in a peptide group, atoms in a mainchain group or atoms of a sidechain that are expected to be planar.

Mol	Chain	#Chirality outliers	#Planarity outliers
1	A	0	1

There are no bond length outliers.

There are no bond angle outliers.

There are no chirality outliers.

All (1) planarity outliers are listed below:

Mol	Chain	Res	Type	Group
1	A	260	GLY	Peptide

5.2 Close contacts

In the following table, the Non-H and H(model) columns list the number of non-hydrogen atoms and hydrogen atoms in the chain respectively. The H(added) column lists the number of hydrogens added by MolProbity. The Clashes column lists the number of clashes within the asymmetric unit, and the number in parentheses is this value normalized per 1000 atoms of the molecule in the chain. The Symm-Clashes column gives symmetry related clashes, in the same way as for the Clashes column.

Mol	Chain	Non-H	H(model)	H(added)	Clashes	Symm-Clashes
1	A	3930	0	3718	18	1

Continued on next page...

Continued from previous page...

Mol	Chain	Non-H	H(model)	H(added)	Clashes	Symm-Clashes
2	A	20	0	0	0	0
3	A	28	0	42	0	0
4	A	6	0	4	0	0
5	A	301	0	210	5	0
6	A	43	0	30	5	1
7	A	268	0	0	0	0
All	All	4596	0	4004	24	1

Clashscore is defined as the number of clashes calculated for the entry per 1000 atoms (including hydrogens) of the entry. The overall clashscore for this entry is 3.

All (24) close contacts within the same asymmetric unit are listed below.

Atom-1	Atom-2	Distance(Å)	Clash(Å)
6:A:616:HEC:HBB3	6:A:616:HEC:HMB1	1.62	0.79
6:A:616:HEC:HBC3	6:A:616:HEC:HMC1	1.63	0.79
1:A:172[B]:GLU:HA	1:A:172[B]:GLU:OE2	1.84	0.75
1:A:263:HIS:ND1	1:A:453:ASN:HB3	2.03	0.73
1:A:260:GLY:N	1:A:264:ASP:HB2	2.14	0.61
1:A:260:GLY:C	1:A:262:ASP:N	2.58	0.57
1:A:171:LEU:HD13	5:A:613:HEM:C3A	2.46	0.50
1:A:261:ILE:HG22	1:A:432:TYR:CD1	2.47	0.50
1:A:389:VAL:HA	1:A:473:LEU:HD13	1.95	0.49
6:A:616:HEC:HMD3	5:A:618:HEM:C1D	2.49	0.48
5:A:613:HEM:HBC2	5:A:613:HEM:HMC2	1.98	0.46
1:A:427:LEU:C	1:A:427:LEU:HD13	2.38	0.45
1:A:223:CYS:HA	6:A:616:HEC:HMC3	2.00	0.44
1:A:180:ASN:HB2	1:A:187:THR:HG21	2.00	0.43
1:A:394:GLU:O	1:A:494:LYS:NZ	2.51	0.43
1:A:368:LEU:HD13	1:A:368:LEU:C	2.40	0.42
1:A:485:LEU:HD23	1:A:486:GLU:N	2.35	0.42
5:A:617:HEM:CMB	5:A:617:HEM:HBB2	2.51	0.41
1:A:205:ASN:O	6:A:616:HEC:HHB	2.21	0.41
1:A:134:SER:C	1:A:141:ILE:HD11	2.42	0.41
1:A:486:GLU:O	1:A:486:GLU:HG2	2.20	0.40
1:A:261:ILE:O	1:A:262:ASP:CB	2.70	0.40
1:A:368:LEU:HD13	1:A:368:LEU:O	2.21	0.40
5:A:613:HEM:HBC2	5:A:613:HEM:CMC	2.51	0.40

All (1) symmetry-related close contacts are listed below. The label for Atom-2 includes the symmetry operator and encoded unit-cell translations to be applied.

Atom-1	Atom-2	Distance(Å)	Clash(Å)
1:A:451:TYR:OH	6:A:616:HEC:C3B[7_454]	2.12	0.08

5.3 Torsion angles

5.3.1 Protein backbone ⓘ

In the following table, the Percentiles column shows the percent Ramachandran outliers of the chain as a percentile score with respect to all X-ray entries followed by that with respect to entries of similar resolution. The Analysed column shows the number of residues for which the backbone conformation was analysed, and the total number of residues.

Mol	Chain	Analysed	Favoured	Allowed	Outliers	Percentiles
1	A	493/500 (99%)	478 (97%)	13 (3%)	2 (0%)	43 39

All (2) Ramachandran outliers are listed below:

Mol	Chain	Res	Type
1	A	262	ASP
1	A	261	ILE

5.3.2 Protein sidechains ⓘ

In the following table, the Percentiles column shows the percent sidechain outliers of the chain as a percentile score with respect to all X-ray entries followed by that with respect to entries of similar resolution. The Analysed column shows the number of residues for which the sidechain conformation was analysed, and the total number of residues.

Mol	Chain	Analysed	Rotameric	Outliers	Percentiles
1	A	412/416 (99%)	407 (99%)	5 (1%)	82 87

All (5) residues with a non-rotameric sidechain are listed below:

Mol	Chain	Res	Type
1	A	261	ILE
1	A	263	HIS
1	A	264	ASP
1	A	409	LEU
1	A	486	GLU

Some sidechains can be flipped to improve hydrogen bonding and reduce clashes. There are no such sidechains identified.

5.3.3 RNA ⓘ

There are no RNA chains in this entry.

5.4 Non-standard residues in protein, DNA, RNA chains ⓘ

There are no non-standard protein/DNA/RNA residues in this entry.

5.5 Carbohydrates ⓘ

There are no carbohydrates in this entry.

5.6 Ligand geometry ⓘ

20 ligands are modelled in this entry.

In the following table, the Counts columns list the number of bonds (or angles) for which Mogul statistics could be retrieved, the number of bonds (or angles) that are observed in the model and the number of bonds (or angles) that are defined in the chemical component dictionary. The Link column lists molecule types, if any, to which the group is linked. The Z score for a bond length (or angle) is the number of standard deviations the observed value is removed from the expected value. A bond length (or angle) with $|Z| > 2$ is considered an outlier worth inspection. RMSZ is the root-mean-square of all Z scores of the bond lengths (or angles).

Mol	Type	Chain	Res	Link	Bond lengths			Bond angles		
					Counts	RMSZ	$\# Z > 2$	Counts	RMSZ	$\# Z > 2$
2	PO4	A	601	-	4,4,4	0.40	0	6,6,6	0.31	0
2	PO4	A	602	-	4,4,4	0.49	0	6,6,6	0.30	0
2	PO4	A	603	-	4,4,4	0.27	0	6,6,6	0.31	0
2	PO4	A	604	-	4,4,4	0.41	0	6,6,6	0.31	0
3	EDO	A	605	-	3,3,3	0.56	0	2,2,2	0.28	0
3	EDO	A	606	-	3,3,3	0.51	0	2,2,2	0.44	0
3	EDO	A	607	-	3,3,3	0.56	0	2,2,2	0.38	0
3	EDO	A	608	-	3,3,3	0.54	0	2,2,2	0.34	0
3	EDO	A	609	-	3,3,3	0.66	0	2,2,2	0.10	0
3	EDO	A	610	-	3,3,3	0.60	0	2,2,2	0.25	0
3	EDO	A	611	-	3,3,3	0.63	0	2,2,2	0.16	0
4	PHZ	A	612	-	6,6,8	0.69	0	6,6,9	0.46	0
5	HEM	A	613	1	49,50,50	2.25	15 (30%)	46,82,82	2.07	7 (15%)
5	HEM	A	614	1	49,50,50	2.20	12 (24%)	46,82,82	1.85	8 (17%)
5	HEM	A	615	1	49,50,50	2.13	11 (22%)	46,82,82	1.91	6 (13%)
6	HEC	A	616	1	50,50,50	2.63	11 (22%)	56,82,82	2.31	19 (33%)

Mol	Type	Chain	Res	Link	Bond lengths			Bond angles		
					Counts	RMSZ	# Z > 2	Counts	RMSZ	# Z > 2
5	HEM	A	617	1	49,50,50	2.11	13 (26%)	46,82,82	2.05	9 (19%)
5	HEM	A	618	1	49,50,50	2.18	15 (30%)	46,82,82	2.08	9 (19%)
5	HEM	A	619	1	49,50,50	2.29	15 (30%)	46,82,82	2.05	9 (19%)
5	HEM	A	620	1	49,50,50	2.18	13 (26%)	46,82,82	1.82	5 (10%)

In the following table, the Chirals column lists the number of chiral outliers, the number of chiral centers analysed, the number of these observed in the model and the number defined in the chemical component dictionary. Similar counts are reported in the Torsion and Rings columns. '-' means no outliers of that kind were identified.

Mol	Type	Chain	Res	Link	Chirals	Torsions	Rings
2	PO4	A	601	-	-	0/0/0/0	0/0/0/0
2	PO4	A	602	-	-	0/0/0/0	0/0/0/0
2	PO4	A	603	-	-	0/0/0/0	0/0/0/0
2	PO4	A	604	-	-	0/0/0/0	0/0/0/0
3	EDO	A	605	-	-	0/1/1/1	0/0/0/0
3	EDO	A	606	-	-	0/1/1/1	0/0/0/0
3	EDO	A	607	-	-	0/1/1/1	0/0/0/0
3	EDO	A	608	-	-	0/1/1/1	0/0/0/0
3	EDO	A	609	-	-	0/1/1/1	0/0/0/0
3	EDO	A	610	-	-	0/1/1/1	0/0/0/0
3	EDO	A	611	-	-	0/1/1/1	0/0/0/0
4	PHZ	A	612	-	-	0/0/0/2	0/1/1/1
5	HEM	A	613	1	-	0/14/114/114	0/0/8/8
5	HEM	A	614	1	-	0/14/114/114	0/0/8/8
5	HEM	A	615	1	-	0/14/114/114	0/0/8/8
6	HEC	A	616	1	-	0/10/54/54	0/0/8/8
5	HEM	A	617	1	-	0/14/114/114	0/0/8/8
5	HEM	A	618	1	-	0/14/114/114	0/0/8/8
5	HEM	A	619	1	-	0/14/114/114	0/0/8/8
5	HEM	A	620	1	-	0/14/114/114	0/0/8/8

All (105) bond length outliers are listed below:

Mol	Chain	Res	Type	Atoms	Z	Observed(Å)	Ideal(Å)
6	A	616	HEC	C3B-CAB	9.54	1.55	1.35
6	A	616	HEC	C3C-CAC	9.50	1.55	1.35
5	A	614	HEM	C3C-C2C	-5.86	1.33	1.43
5	A	614	HEM	C3B-C2B	-5.69	1.33	1.43
5	A	617	HEM	C3B-C2B	-5.69	1.33	1.43
5	A	613	HEM	C3B-C2B	-5.60	1.34	1.43

Continued on next page...

Continued from previous page...

Mol	Chain	Res	Type	Atoms	Z	Observed(Å)	Ideal(Å)
5	A	620	HEM	C3B-C2B	-5.54	1.34	1.43
5	A	615	HEM	C3B-C2B	-5.52	1.34	1.43
5	A	619	HEM	C3C-C2C	-5.48	1.34	1.43
5	A	613	HEM	C3D-C2D	5.47	1.53	1.43
5	A	618	HEM	C3B-C2B	-5.38	1.34	1.43
6	A	616	HEC	C3D-C2D	5.37	1.53	1.37
5	A	618	HEM	C3C-C2C	-5.37	1.34	1.43
5	A	613	HEM	C3C-C2C	-5.32	1.34	1.43
5	A	619	HEM	C3B-C2B	-5.32	1.34	1.43
5	A	617	HEM	C3C-C2C	-5.31	1.34	1.43
5	A	615	HEM	C3D-C2D	5.29	1.53	1.43
5	A	620	HEM	C3C-C2C	-5.29	1.34	1.43
5	A	619	HEM	C3D-C2D	5.29	1.53	1.43
5	A	618	HEM	C3D-C2D	5.23	1.52	1.43
5	A	615	HEM	C3C-C2C	-5.20	1.34	1.43
5	A	614	HEM	C3D-C2D	5.18	1.52	1.43
5	A	617	HEM	C3D-C2D	5.14	1.52	1.43
5	A	620	HEM	C3D-C2D	5.12	1.52	1.43
5	A	615	HEM	C3C-CAC	4.88	1.55	1.40
5	A	613	HEM	C3C-CAC	4.80	1.55	1.40
5	A	619	HEM	C3C-CAC	4.67	1.55	1.40
5	A	617	HEM	C3C-CAC	4.66	1.55	1.40
5	A	619	HEM	C3D-C4D	4.66	1.45	1.44
5	A	615	HEM	C3B-CAB	4.66	1.55	1.40
5	A	620	HEM	C3B-CAB	4.65	1.55	1.40
5	A	618	HEM	C3C-CAC	4.63	1.55	1.40
5	A	619	HEM	C3B-CAB	4.61	1.54	1.40
5	A	620	HEM	C3C-CAC	4.61	1.54	1.40
5	A	618	HEM	C4A-C3A	4.61	1.45	1.40
5	A	614	HEM	C3C-CAC	4.57	1.54	1.40
5	A	618	HEM	C3B-CAB	4.51	1.54	1.40
5	A	614	HEM	C3B-CAB	4.49	1.54	1.40
5	A	613	HEM	C3B-CAB	4.43	1.54	1.40
5	A	620	HEM	C4A-C3A	4.40	1.45	1.40
6	A	616	HEC	C1C-C2C	4.36	1.45	1.40
5	A	614	HEM	C4A-C3A	4.30	1.45	1.40
5	A	617	HEM	C3B-CAB	4.30	1.53	1.40
5	A	617	HEM	C4A-C3A	4.29	1.45	1.40
5	A	615	HEM	C4A-C3A	4.26	1.45	1.40
5	A	614	HEM	C2B-C1B	4.17	1.45	1.44
6	A	616	HEC	C3B-C4B	4.08	1.46	1.41
6	A	616	HEC	C1D-C2D	4.05	1.45	1.40

Continued on next page...

Continued from previous page...

Mol	Chain	Res	Type	Atoms	Z	Observed(Å)	Ideal(Å)
5	A	613	HEM	C4A-C3A	3.79	1.44	1.40
5	A	619	HEM	C4A-C3A	3.72	1.44	1.40
5	A	613	HEM	C3D-C4D	3.58	1.45	1.44
5	A	619	HEM	C2B-C1B	3.47	1.45	1.44
5	A	620	HEM	C2D-C1D	3.44	1.45	1.44
5	A	613	HEM	FE-ND	3.35	2.10	1.97
5	A	618	HEM	FE-NA	3.29	2.06	1.92
6	A	616	HEC	C3B-C2B	-3.21	1.34	1.41
6	A	616	HEC	C3C-C2C	-3.11	1.34	1.41
6	A	616	HEC	C1B-C2B	3.08	1.44	1.40
5	A	613	HEM	C2B-C1B	3.05	1.45	1.44
6	A	616	HEC	FE-ND	3.03	2.05	1.92
5	A	619	HEM	C2D-C1D	2.99	1.45	1.44
5	A	613	HEM	FE-NA	2.99	2.05	1.92
5	A	619	HEM	FE-ND	2.96	2.08	1.97
5	A	617	HEM	FE-NA	2.87	2.04	1.92
6	A	616	HEC	C3C-C4C	2.85	1.45	1.41
5	A	617	HEM	FE-NC	2.73	2.08	1.97
5	A	615	HEM	FE-NA	2.71	2.04	1.92
5	A	614	HEM	FE-NA	2.69	2.03	1.92
5	A	620	HEM	FE-NA	2.64	2.03	1.92
5	A	619	HEM	CMC-C2C	2.63	1.55	1.47
5	A	617	HEM	CMC-C2C	2.59	1.55	1.47
5	A	620	HEM	FE-ND	2.58	2.07	1.97
5	A	614	HEM	CMB-C2B	2.54	1.55	1.47
5	A	620	HEM	CMC-C2C	2.54	1.55	1.47
5	A	613	HEM	CMD-C2D	2.52	1.55	1.47
5	A	617	HEM	CMD-C2D	2.50	1.55	1.47
5	A	618	HEM	CMB-C2B	2.49	1.55	1.47
5	A	615	HEM	CMC-C2C	2.47	1.55	1.47
5	A	617	HEM	CMB-C2B	2.46	1.55	1.47
5	A	619	HEM	CMB-C2B	2.45	1.55	1.47
5	A	615	HEM	CMD-C2D	2.45	1.55	1.47
5	A	614	HEM	CMD-C2D	2.45	1.55	1.47
5	A	618	HEM	FE-NB	2.44	2.06	1.97
5	A	619	HEM	CMD-C2D	2.44	1.55	1.47
5	A	614	HEM	FE-ND	2.43	2.06	1.97
5	A	613	HEM	CMB-C2B	2.39	1.54	1.47
5	A	618	HEM	CMC-C2C	2.39	1.54	1.47
5	A	613	HEM	C2D-C1D	2.38	1.45	1.44
5	A	614	HEM	CMC-C2C	2.37	1.54	1.47
5	A	613	HEM	CMC-C2C	2.35	1.54	1.47

Continued on next page...

Continued from previous page...

Mol	Chain	Res	Type	Atoms	Z	Observed(Å)	Ideal(Å)
5	A	620	HEM	CMB-C2B	2.33	1.54	1.47
5	A	615	HEM	FE-NC	2.32	2.06	1.97
5	A	620	HEM	CMD-C2D	2.32	1.54	1.47
5	A	615	HEM	CMB-C2B	2.32	1.54	1.47
5	A	619	HEM	FE-NA	2.28	2.02	1.92
5	A	619	HEM	FE-NC	2.21	2.06	1.97
5	A	618	HEM	C2B-C1B	2.19	1.45	1.44
5	A	618	HEM	FE-ND	2.15	2.05	1.97
5	A	620	HEM	C2B-C1B	2.13	1.45	1.44
5	A	617	HEM	C2D-C1D	2.12	1.45	1.44
5	A	618	HEM	CMD-C2D	2.11	1.54	1.47
5	A	613	HEM	CHA-C4D	2.08	1.38	1.35
5	A	618	HEM	CHA-C4D	2.03	1.38	1.35
5	A	617	HEM	FE-ND	2.02	2.05	1.97
5	A	618	HEM	CHB-C1B	2.00	1.38	1.35

All (72) bond angle outliers are listed below:

Mol	Chain	Res	Type	Atoms	Z	Observed(°)	Ideal(°)
5	A	613	HEM	C3B-C4B-NB	-9.26	107.37	114.00
5	A	617	HEM	C3B-C4B-NB	-8.85	107.67	114.00
5	A	619	HEM	C3B-C4B-NB	-8.60	107.84	114.00
5	A	620	HEM	C3B-C4B-NB	-8.36	108.02	114.00
5	A	618	HEM	C3B-C4B-NB	-8.34	108.03	114.00
5	A	614	HEM	C3B-C4B-NB	-8.03	108.25	114.00
5	A	615	HEM	C3B-C4B-NB	-7.86	108.37	114.00
5	A	613	HEM	C4D-ND-C1D	6.31	111.62	105.16
5	A	618	HEM	C4D-ND-C1D	6.21	111.52	105.16
6	A	616	HEC	CBC-CAC-C3C	-6.14	111.14	128.44
5	A	619	HEM	C4D-ND-C1D	5.92	111.22	105.16
5	A	615	HEM	C4D-ND-C1D	5.76	111.05	105.16
6	A	616	HEC	CBB-CAB-C3B	-5.76	112.23	128.44
5	A	617	HEM	C4D-ND-C1D	5.75	111.04	105.16
5	A	614	HEM	C4D-ND-C1D	5.16	110.45	105.16
5	A	620	HEM	C4D-ND-C1D	5.14	110.42	105.16
6	A	616	HEC	C4D-ND-C1D	4.68	112.93	106.76
6	A	616	HEC	C3B-C4B-NB	-4.66	104.78	111.52
6	A	616	HEC	C2C-C1C-NC	-4.42	106.07	109.41
5	A	619	HEM	C2D-C1D-ND	-3.98	108.23	112.93
5	A	618	HEM	C2D-C1D-ND	-3.83	108.41	112.93
6	A	616	HEC	C2A-C1A-NA	-3.82	106.77	109.64
5	A	617	HEM	CHC-C4B-NB	3.81	127.75	124.58

Continued on next page...

Continued from previous page...

Mol	Chain	Res	Type	Atoms	Z	Observed(°)	Ideal(°)
5	A	617	HEM	C2D-C1D-ND	-3.68	108.59	112.93
6	A	616	HEC	C2B-C1B-NB	-3.59	106.70	109.41
6	A	616	HEC	C4B-C3B-C2B	3.57	108.95	106.68
5	A	613	HEM	C2D-C1D-ND	-3.55	108.74	112.93
5	A	615	HEM	C2D-C1D-ND	-3.52	108.78	112.93
6	A	616	HEC	CMB-C2B-C1B	-3.46	123.29	128.62
5	A	618	HEM	CBD-CAD-C3D	-3.41	106.93	114.37
5	A	619	HEM	C1B-NB-C4B	3.27	108.50	105.16
6	A	616	HEC	C3C-C4C-NC	-3.24	106.83	111.52
5	A	620	HEM	C2D-C1D-ND	-3.05	109.33	112.93
5	A	613	HEM	CMA-C3A-C4A	-3.00	124.01	128.62
5	A	614	HEM	C2D-C1D-ND	-2.94	109.46	112.93
5	A	615	HEM	CBA-CAA-C2A	-2.90	107.58	112.69
6	A	616	HEC	C4A-CHB-C1B	-2.89	123.67	127.47
5	A	618	HEM	C1B-NB-C4B	2.82	108.05	105.16
6	A	616	HEC	C4B-NB-C1B	2.80	110.45	106.76
5	A	618	HEM	C3A-C4A-NA	-2.80	107.30	109.41
5	A	614	HEM	C3A-C4A-NA	-2.70	107.37	109.41
5	A	614	HEM	CMA-C3A-C4A	-2.69	124.48	128.62
5	A	613	HEM	CBA-CAA-C2A	-2.65	108.03	112.69
5	A	619	HEM	C3A-C4A-NA	-2.59	107.46	109.41
6	A	616	HEC	CMC-C2C-C1C	-2.55	124.69	128.62
6	A	616	HEC	C4B-CHC-C1C	-2.53	124.14	127.47
5	A	620	HEM	C1B-NB-C4B	2.51	107.73	105.16
5	A	618	HEM	CMA-C3A-C4A	-2.44	124.86	128.62
5	A	615	HEM	C1B-NB-C4B	2.41	107.63	105.16
5	A	613	HEM	C1B-NB-C4B	2.41	107.63	105.16
5	A	620	HEM	C4C-NC-C1C	2.40	108.03	105.53
5	A	617	HEM	C1B-NB-C4B	2.34	107.56	105.16
5	A	619	HEM	CHD-C1D-ND	2.32	126.51	124.58
6	A	616	HEC	C3A-C4A-NA	-2.31	107.67	109.41
5	A	617	HEM	C3A-C4A-NA	-2.31	107.67	109.41
6	A	616	HEC	C4A-NA-C1A	2.29	109.02	105.58
5	A	614	HEM	CHD-C1D-ND	2.29	126.48	124.58
6	A	616	HEC	C1A-C2A-C3A	2.27	108.47	106.69
5	A	614	HEM	C1B-NB-C4B	2.24	107.45	105.16
6	A	616	HEC	C3C-C2C-C1C	2.22	108.55	107.07
5	A	619	HEM	C4C-NC-C1C	2.21	107.83	105.53
5	A	618	HEM	C4C-NC-C1C	2.19	107.82	105.53
5	A	619	HEM	CMA-C3A-C4A	-2.16	125.30	128.62
6	A	616	HEC	C1D-C2D-C3D	-2.16	105.49	107.00
5	A	618	HEM	CHD-C1D-ND	2.15	126.37	124.58

Continued on next page...

Continued from previous page...

Mol	Chain	Res	Type	Atoms	Z	Observed(°)	Ideal(°)
5	A	613	HEM	C4C-NC-C1C	2.13	107.75	105.53
5	A	615	HEM	CHD-C1D-ND	2.12	126.35	124.58
5	A	617	HEM	CBD-CAD-C3D	-2.09	109.81	114.37
5	A	617	HEM	CMA-C3A-C4A	-2.08	125.42	128.62
5	A	614	HEM	C4C-NC-C1C	2.06	107.68	105.53
5	A	619	HEM	CBA-CAA-C2A	-2.05	109.08	112.69
5	A	617	HEM	C4C-NC-C1C	2.03	107.65	105.53

There are no chirality outliers.

There are no torsion outliers.

There are no ring outliers.

5.7 Other polymers ⓘ

There are no such residues in this entry.

5.8 Polymer linkage issues

There are no chain breaks in this entry.

6 Fit of model and data ⓘ

6.1 Protein, DNA and RNA chains ⓘ

In the following table, the column labelled ‘#RSRZ> 2’ contains the number (and percentage) of RSRZ outliers, followed by percent RSRZ outliers for the chain as percentile scores relative to all X-ray entries and entries of similar resolution. The OWAB column contains the minimum, median, 95th percentile and maximum values of the occupancy-weighted average B-factor per residue. The column labelled ‘Q< 0.9’ lists the number of (and percentage) of residues with an average occupancy less than 0.9.

Mol	Chain	Analysed	<RSRZ>	#RSRZ>2	OWAB(Å ²)	Q<0.9
1	A	494/500 (98%)	-0.25	7 (1%) 72 76	17, 27, 42, 52	0

All (7) RSRZ outliers are listed below:

Mol	Chain	Res	Type	RSRZ
1	A	263	HIS	4.5
1	A	533	GLU	3.1
1	A	485	LEU	3.1
1	A	486	GLU	2.9
1	A	262	ASP	2.8
1	A	261	ILE	2.7
1	A	488	LYS	2.4

6.2 Non-standard residues in protein, DNA, RNA chains ⓘ

There are no non-standard protein/DNA/RNA residues in this entry.

6.3 Carbohydrates ⓘ

There are no carbohydrates in this entry.

6.4 Ligands ⓘ

In the following table, the Atoms column lists the number of modelled atoms in the group and the number defined in the chemical component dictionary. LLDF column lists the quality of electron density of the group with respect to its neighbouring residues in protein, DNA or RNA chains. The B-factors column lists the minimum, median, 95th percentile and maximum values of B factors of atoms in the group. The column labelled ‘Q< 0.9’ lists the number of atoms with occupancy less than 0.9.

Mol	Type	Chain	Res	Atoms	RSR	LLDF	B-factors(\AA^2)	Q<0.9
3	EDO	A	610	4/4	0.22	10.91	51,52,52,52	0
2	PO4	A	602	5/5	0.13	3.38	33,33,34,35	0
2	PO4	A	604	5/5	0.30	2.55	16,16,17,18	5
3	EDO	A	611	4/4	0.18	1.14	42,43,43,43	0
3	EDO	A	605	4/4	0.21	1.04	42,42,42,42	0
3	EDO	A	606	4/4	0.15	0.70	41,42,42,42	0
2	PO4	A	601	5/5	0.09	0.62	32,32,33,34	0
3	EDO	A	608	4/4	0.12	0.62	29,30,30,32	0
4	PHZ	A	612	6/8	0.15	0.51	28,30,31,31	0
3	EDO	A	607	4/4	0.12	0.20	40,42,42,42	0
5	HEM	A	617	43/43	0.09	0.14	17,19,21,24	0
5	HEM	A	618	43/43	0.10	0.11	16,19,24,24	0
6	HEC	A	616	43/43	0.12	-0.06	24,25,29,32	0
5	HEM	A	615	43/43	0.09	-0.17	19,21,25,26	0
5	HEM	A	620	43/43	0.09	-0.25	17,19,20,21	0
2	PO4	A	603	5/5	0.10	-0.33	35,35,35,36	5
5	HEM	A	619	43/43	0.10	-0.40	16,18,22,24	0
5	HEM	A	613	43/43	0.08	-0.47	23,25,29,30	0
5	HEM	A	614	43/43	0.07	-0.62	19,20,22,22	0
3	EDO	A	609	4/4	0.08	-0.62	24,25,25,26	0

6.5 Other polymers ⓘ

There are no such residues in this entry.