



Full wwPDB X-ray Structure Validation Report

Mar 1, 2014 – 12:40 AM GMT

PDB ID : 1NIP
Title : CRYSTALLOGRAPHIC STRUCTURE OF THE NITROGENASE IRON
PROTEIN FROM AZOTOBACTER VINELANDII
Authors : Komiya, H.; Georgiadis, M.M.; Chakrabarti, P.; Woo, D.; Kornuc, J.J.; Rees,
D.C.
Deposited on : 1992-09-29
Resolution : 2.90 Å(reported)

This is a full wwPDB validation report for a publicly released PDB entry.
We welcome your comments at validation@mail.wwpdb.org
A user guide is available at <http://wwpdb.org/ValidationPDFNotes.html>

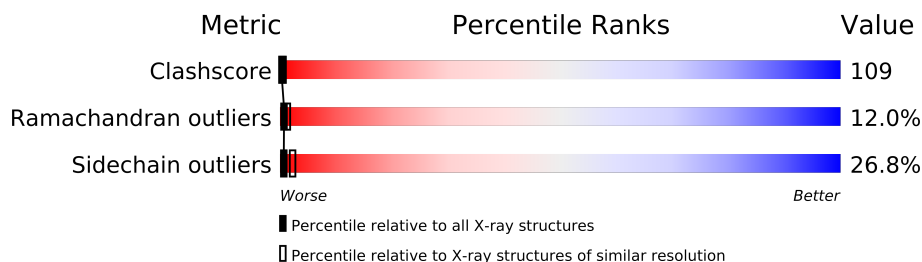
The following versions of software and data (see [references](#)) were used in the production of this report:

MolProbity : 4.02b-467
Mogul : 1.15 2013
Xtriage (Phenix) : **NOT EXECUTED**
EDS : **NOT EXECUTED**
Percentile statistics : 21963
Ideal geometry (proteins) : Engh & Huber (2001)
Ideal geometry (DNA, RNA) : Parkinson et. al. (1996)
Validation Pipeline (wwPDB-VP) : stable22683

1 Overall quality at a glance

The reported resolution of this entry is 2.90 Å.

Percentile scores (ranging between 0-100) for global validation metrics of the entry are shown in the following graphic. The table shows the number of entries on which the scores are based.



Metric	Whole archive (#Entries)	Similar resolution (#Entries, resolution range(Å))
Clashscore	79885	1326 (2.90-2.90)
Ramachandran outliers	78287	1290 (2.90-2.90)
Sidechain outliers	78261	1292 (2.90-2.90)

The table below summarises the geometric issues observed across the polymeric chains and their fit to the electron density. The red, orange, yellow and green segments on the lower bar indicate the fraction of residues that contain outliers for ≥ 3 , 2, 1 and 0 types of geometric quality criteria. The upper red bar (where present) indicates the fraction of residues that have poor fit to the electron density.

Note EDS was not executed.

Mol	Chain	Length	Quality of chain
1	A	289	
1	B	289	

2 Entry composition i

There are 5 unique types of molecules in this entry. The entry contains 4164 atoms, of which 0 are hydrogen and 0 are deuterium.

In the tables below, the ZeroOcc column contains the number of atoms modelled with zero occupancy, the AltConf column contains the number of residues with at least one atom in alternate conformation and the Trace column contains the number of residues modelled with at most 2 atoms.

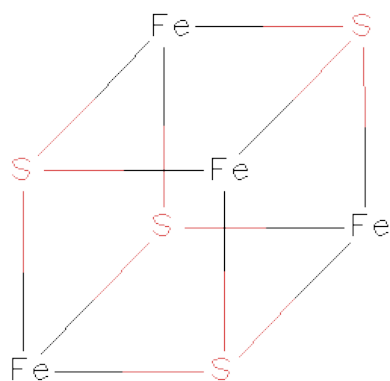
- Molecule 1 is a protein called NITROGENASE IRON PROTEIN.

Mol	Chain	Residues	Atoms					ZeroOcc	AltConf	Trace
1	A	283	Total	C	N	O	S	0	0	0
			2048	1285	342	401	20			
1	B	287	Total	C	N	O	S	0	0	0
			2062	1294	347	400	21			

- Molecule 2 is MAGNESIUM ION (three-letter code: MG) (formula: Mg).

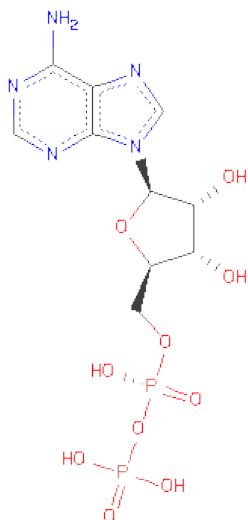
Mol	Chain	Residues	Atoms		ZeroOcc	AltConf
2	B	1	Total	Mg	0	0
			1	1		
2	A	1	Total	Mg	0	0
			1	1		

- Molecule 3 is IRON/SULFUR CLUSTER (three-letter code: SF4) (formula: Fe₄S₄).



Mol	Chain	Residues	Atoms			ZeroOcc	AltConf
3	B	1	Total	Fe	S	0	0
			8	4	4		

- Molecule 4 is ADENOSINE-5'-DIPHOSPHATE (three-letter code: ADP) (formula: $C_{10}H_{15}N_5O_{10}P_2$).



Mol	Chain	Residues	Atoms					ZeroOcc	AltConf
4	B	1	Total	C	N	O	P	0	0
			27	10	5	10	2		

- Molecule 5 is water.

Mol	Chain	Residues	Atoms		ZeroOcc	AltConf
5	A	5	Total	O	0	0
			5	5		
5	B	12	Total	O	0	0
			12	12		

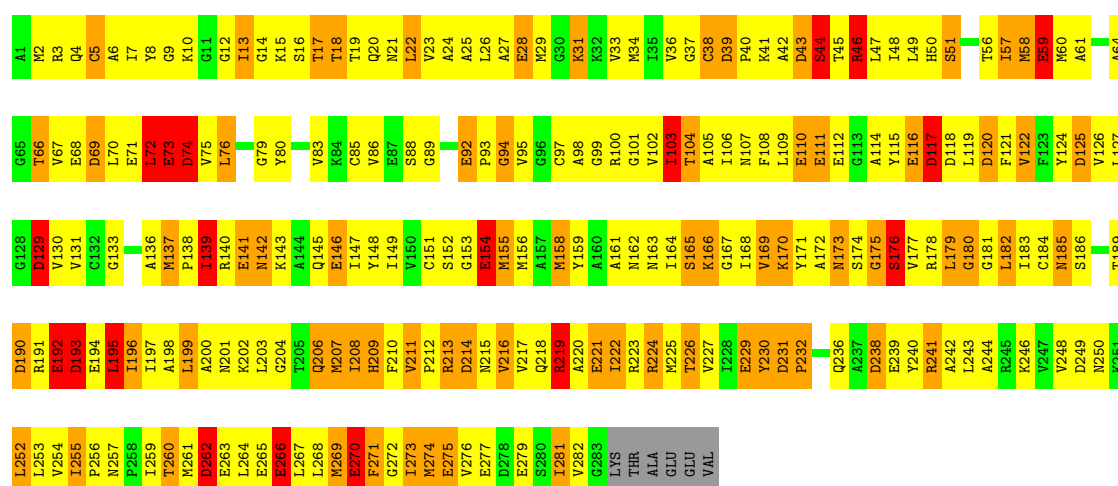
3 Residue-property plots

These plots are drawn for all protein, RNA and DNA chains in the entry. The first graphic for a chain summarises the proportions of errors displayed in the second graphic. The second graphic shows the sequence view annotated by issues in geometry and electron density. Residues are color-coded according to the number of geometric quality criteria for which they contain at least one outlier: green = 0, yellow = 1, orange = 2 and red = 3 or more. A red dot above a residue indicates a poor fit to the electron density ($RSRZ > 2$). Stretches of 2 or more consecutive residues without any outlier are shown as a green connector. Residues present in the sample, but not in the model, are shown in grey.

Note EDS was not executed.

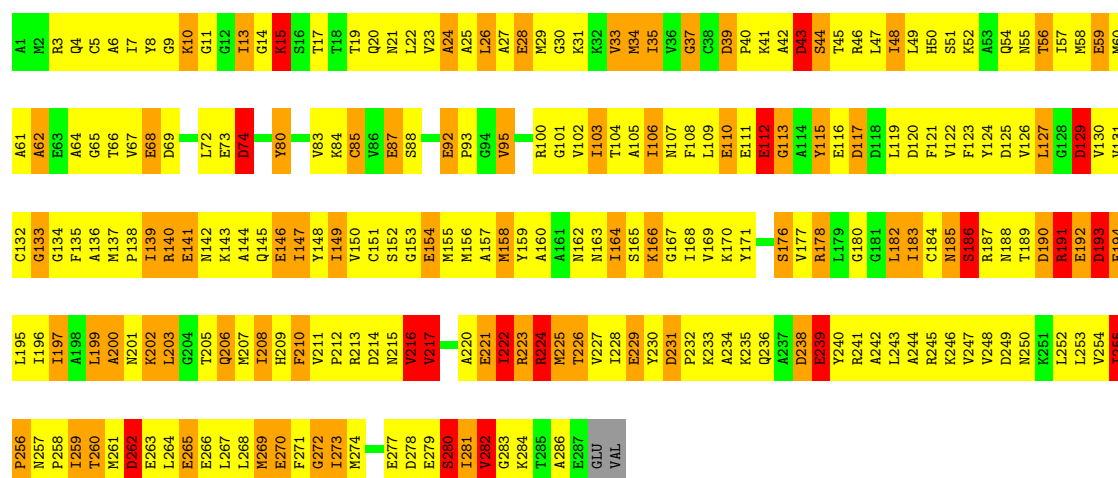
• Molecule 1: NITROGENASE IRON PROTEIN

Chain A:



• Molecule 1: NITROGENASE IRON PROTEIN

Chain B:



4 Data and refinement statistics

Xtriage (Phenix) and EDS were not executed - this section will therefore be incomplete.

Property	Value	Source
Space group	P 1 21 1	Depositor
Cell constants a, b, c, α , β , γ	56.80Å 92.90Å 63.60Å 90.00° 100.00° 90.00°	Depositor
Resolution (Å)	8.00 – 2.90	Depositor
% Data completeness (in resolution range)	(Not available) (8.00-2.90)	Depositor
R_{merge}	(Not available)	Depositor
R_{sym}	(Not available)	Depositor
Refinement program	TNT	Depositor
R, R_{free}	0.183 , (Not available)	Depositor
Estimated twinning fraction	No twinning to report.	Xtriage
Total number of atoms	4164	wwPDB-VP
Average B, all atoms (Å ²)	38.0	wwPDB-VP

5 Model quality

5.1 Standard geometry

Bond lengths and bond angles in the following residue types are not validated in this section: SF4, MG, ADP

The Z score for a bond length (or angle) is the number of standard deviations the observed value is removed from the expected value. A bond length (or angle) with $|Z| > 5$ is considered an outlier worth inspection. RMSZ is the root-mean-square of all Z scores of the bond lengths (or angles).

Mol	Chain	Bond lengths		Bond angles	
		RMSZ	# Z >5	RMSZ	# Z >5
1	A	1.02	16/2072 (0.8%)	1.43	31/2808 (1.1%)
1	B	0.97	16/2085 (0.8%)	1.41	26/2822 (0.9%)
All	All	1.00	32/4157 (0.8%)	1.42	57/5630 (1.0%)

Chiral center outliers are detected by calculating the chiral volume of a chiral center and verifying if the center is modelled as a planar moiety or with the opposite hand. A planarity outlier is detected by checking planarity of atoms in a peptide group, atoms in a mainchain group or atoms of a sidechain that are expected to be planar.

Mol	Chain	#Chirality outliers	#Planarity outliers
1	A	1	3
1	B	2	4
All	All	3	7

All (32) bond length outliers are listed below:

Mol	Chain	Res	Type	Atoms	Z	Observed(Å)	Ideal(Å)
1	A	112	GLU	CD-OE2	9.21	1.35	1.25
1	B	87	GLU	CD-OE1	7.04	1.33	1.25
1	A	73	GLU	CD-OE2	6.93	1.33	1.25
1	A	146	GLU	CD-OE1	6.56	1.32	1.25
1	B	279	GLU	CD-OE2	6.54	1.32	1.25
1	A	229	GLU	CD-OE1	6.51	1.32	1.25
1	A	141	GLU	CD-OE2	6.27	1.32	1.25
1	A	192	GLU	CD-OE1	6.18	1.32	1.25
1	A	270	GLU	CD-OE1	6.11	1.32	1.25
1	B	28	GLU	CD-OE1	5.98	1.32	1.25
1	B	221	GLU	CD-OE2	5.96	1.32	1.25
1	B	141	GLU	CD-OE2	5.96	1.32	1.25
1	B	92	GLU	CD-OE1	5.89	1.32	1.25
1	A	111	GLU	CD-OE1	5.83	1.32	1.25

Continued on next page...

Continued from previous page...

Mol	Chain	Res	Type	Atoms	Z	Observed(Å)	Ideal(Å)
1	A	266	GLU	CD-OE1	5.79	1.32	1.25
1	B	239	GLU	CD-OE1	5.77	1.32	1.25
1	B	277	GLU	CD-OE2	5.75	1.31	1.25
1	A	154	GLU	CD-OE1	5.74	1.31	1.25
1	B	265	GLU	CD-OE2	5.70	1.31	1.25
1	A	59	GLU	CD-OE1	5.65	1.31	1.25
1	B	59	GLU	CD-OE2	5.62	1.31	1.25
1	B	192	GLU	CD-OE1	5.54	1.31	1.25
1	A	221	GLU	CD-OE2	5.49	1.31	1.25
1	B	110	GLU	CD-OE2	5.39	1.31	1.25
1	B	112	GLU	CD-OE1	5.37	1.31	1.25
1	A	28	GLU	CD-OE1	5.37	1.31	1.25
1	B	229	GLU	CD-OE1	5.36	1.31	1.25
1	A	110	GLU	CD-OE2	5.34	1.31	1.25
1	B	154	GLU	CD-OE2	5.29	1.31	1.25
1	B	146	GLU	CD-OE2	5.26	1.31	1.25
1	A	279	GLU	CD-OE2	5.16	1.31	1.25
1	A	92	GLU	CD-OE1	5.13	1.31	1.25

All (57) bond angle outliers are listed below:

Mol	Chain	Res	Type	Atoms	Z	Observed(°)	Ideal(°)
1	A	125	ASP	CB-CG-OD1	-10.54	108.81	118.30
1	B	120	ASP	CB-CG-OD1	-9.40	109.84	118.30
1	A	125	ASP	CB-CG-OD2	8.63	126.07	118.30
1	A	69	ASP	CB-CG-OD1	-8.43	110.71	118.30
1	A	231	ASP	CB-CG-OD1	-8.17	110.94	118.30
1	A	74	ASP	CB-CG-OD2	-7.86	111.22	118.30
1	A	249	ASP	CB-CG-OD1	7.78	125.30	118.30
1	A	193	ASP	CB-CG-OD1	-7.41	111.63	118.30
1	A	69	ASP	CB-CG-OD2	7.32	124.89	118.30
1	B	262	ASP	CB-CG-OD2	-7.12	111.89	118.30
1	B	39	ASP	CB-CG-OD2	-7.03	111.97	118.30
1	B	193	ASP	CB-CG-OD1	-6.99	112.00	118.30
1	B	129	ASP	CB-CG-OD1	-6.79	112.19	118.30
1	A	74	ASP	CB-CG-OD1	6.76	124.39	118.30
1	A	241	ARG	NE-CZ-NH1	6.74	123.67	120.30
1	B	125	ASP	CB-CG-OD1	-6.71	112.26	118.30
1	A	129	ASP	CB-CG-OD1	-6.61	112.35	118.30
1	B	117	ASP	CB-CG-OD2	-6.59	112.37	118.30
1	A	238	ASP	CB-CG-OD2	-6.55	112.40	118.30
1	A	262	ASP	CB-CG-OD2	-6.51	112.44	118.30

Continued on next page...

Continued from previous page...

Mol	Chain	Res	Type	Atoms	Z	Observed(°)	Ideal(°)
1	A	120	ASP	CB-CG-OD2	-6.47	112.48	118.30
1	B	255	ILE	C-N-CD	-6.45	106.42	120.60
1	A	214	ASP	CB-CG-OD2	-6.36	112.58	118.30
1	A	190	ASP	CB-CG-OD2	-6.35	112.59	118.30
1	A	129	ASP	CB-CG-OD2	6.31	123.98	118.30
1	A	249	ASP	CB-CG-OD2	-6.25	112.67	118.30
1	A	214	ASP	CB-CG-OD1	6.21	123.89	118.30
1	B	193	ASP	CB-CG-OD2	6.18	123.86	118.30
1	B	129	ASP	CB-CG-OD2	6.11	123.80	118.30
1	A	43	ASP	CB-CG-OD1	-5.99	112.91	118.30
1	B	186	SER	N-CA-CB	5.97	119.45	110.50
1	B	190	ASP	CB-CG-OD1	-5.87	113.01	118.30
1	B	190	ASP	CB-CG-OD2	5.87	123.58	118.30
1	B	43	ASP	CB-CG-OD1	-5.86	113.02	118.30
1	B	231	ASP	CB-CG-OD1	-5.77	113.11	118.30
1	B	249	ASP	CB-CG-OD2	-5.72	113.15	118.30
1	A	120	ASP	CB-CG-OD1	5.67	123.41	118.30
1	A	193	ASP	CB-CG-OD2	5.66	123.39	118.30
1	B	278	ASP	CB-CG-OD2	-5.60	113.26	118.30
1	A	231	ASP	CB-CG-OD2	5.56	123.31	118.30
1	A	262	ASP	CB-CG-OD1	5.54	123.28	118.30
1	B	51	SER	N-CA-CB	5.53	118.79	110.50
1	A	190	ASP	CB-CG-OD1	5.43	123.19	118.30
1	B	249	ASP	CB-CG-OD1	5.43	123.19	118.30
1	B	231	ASP	CB-CG-OD2	5.39	123.15	118.30
1	B	115	TYR	CB-CG-CD2	-5.38	117.78	121.00
1	A	224	ARG	NE-CZ-NH1	5.33	122.97	120.30
1	B	191	ARG	NE-CZ-NH2	-5.32	117.64	120.30
1	B	191	ARG	NE-CZ-NH1	5.26	122.93	120.30
1	A	100	ARG	NE-CZ-NH1	5.24	122.92	120.30
1	B	43	ASP	CB-CG-OD2	5.21	122.99	118.30
1	A	241	ARG	NE-CZ-NH2	-5.20	117.70	120.30
1	A	219	ARG	NE-CZ-NH1	5.15	122.88	120.30
1	A	117	ASP	CB-CG-OD1	-5.15	113.67	118.30
1	A	39	ASP	CB-CG-OD2	-5.08	113.72	118.30
1	B	74	ASP	CB-CG-OD2	-5.07	113.73	118.30
1	B	262	ASP	CB-CG-OD1	5.02	122.82	118.30

All (3) chirality outliers are listed below:

Mol	Chain	Res	Type	Atom
1	A	43	ASP	CA

Continued on next page...

Continued from previous page...

Mol	Chain	Res	Type	Atom
1	B	84	LYS	CA
1	B	191	ARG	CA

All (7) planarity outliers are listed below:

Mol	Chain	Res	Type	Group
1	A	129	ASP	Mainchain
1	A	139	ILE	Mainchain
1	A	269	MET	Mainchain
1	B	200	ALA	Mainchain
1	B	206	GLN	Mainchain
1	B	282	VAL	Mainchain
1	B	80	TYR	Sidechain

5.2 Close contacts ⓘ

In the following table, the Non-H and H(model) columns list the number of non-hydrogen atoms and hydrogen atoms in the chain respectively. The H(added) column lists the number of hydrogens added by MolProbity. The Clashes column lists the number of clashes within the asymmetric unit, and the number in parentheses is this value normalized per 1000 atoms of the molecule in the chain. The Symm-Clashes column gives symmetry related clashes, in the same way as for the Clashes column.

Mol	Chain	Non-H	H(model)	H(added)	Clashes	Symm-Clashes
1	A	2048	0	1979	427	0
1	B	2062	0	1982	471	0
2	A	1	0	0	0	0
2	B	1	0	0	0	0
3	B	8	0	0	0	0
4	B	27	0	12	29	0
5	A	5	0	0	1	0
5	B	12	0	0	5	0
All	All	4164	0	3973	887	0

Clashscore is defined as the number of clashes calculated for the entry per 1000 atoms (including hydrogens) of the entry. The overall clashscore for this entry is 109.

All (887) close contacts within the same asymmetric unit are listed below.

Atom-1	Atom-2	Distance(Å)	Clash(Å)
1:A:48:ILE:HG22	1:A:79:GLY:HA3	1.25	1.11
1:A:151:CYS:HB3	1:A:196:ILE:HD11	1.34	1.07

Continued on next page...

Continued from previous page...

Atom-1	Atom-2	Distance(Å)	Clash(Å)
1:B:137:MET:HE1	1:B:140:ARG:HD3	1.38	1.03
1:A:8:TYR:CZ	1:A:126:VAL:HG11	1.97	1.00
1:A:41:LYS:CD	4:B:292:ADP:H5'2	1.95	0.97
1:B:209:HIS:CD2	1:B:210:PHE:H	1.82	0.97
1:A:197:ILE:HG13	1:A:207:MET:CE	1.95	0.96
1:A:140:ARG:HG3	1:A:171:TYR:HE1	1.30	0.96
1:A:273:ILE:HD12	1:A:273:ILE:H	1.30	0.96
1:B:209:HIS:HD2	1:B:210:PHE:H	1.02	0.96
1:A:151:CYS:HB3	1:A:196:ILE:CD1	1.98	0.94
1:A:168:ILE:HD12	1:A:168:ILE:H	1.31	0.94
1:B:129:ASP:HA	4:B:292:ADP:O2'	1.67	0.93
1:A:169:VAL:HG12	1:A:170:LYS:N	1.82	0.93
1:B:10:LYS:HG2	1:B:13:ILE:CD1	2.00	0.92
1:A:6:ALA:CB	1:A:124:TYR:HB2	2.00	0.92
1:A:268:LEU:HB2	1:A:274:MET:HG2	1.52	0.92
1:A:148:TYR:HD1	1:A:181:GLY:H	1.17	0.92
1:A:209:HIS:HB2	1:A:243:LEU:HD13	1.50	0.91
1:B:8:TYR:O	1:B:15:LYS:HD2	1.71	0.90
1:A:8:TYR:HD2	1:A:164:ILE:HD11	1.34	0.90
1:A:161:ALA:O	1:A:164:ILE:HG22	1.72	0.90
1:A:148:TYR:CE1	1:A:180:GLY:HA3	2.07	0.89
1:A:136:ALA:O	1:A:139:ILE:HB	1.73	0.89
1:B:259:ILE:HD11	1:B:264:LEU:HB2	1.55	0.88
1:A:266:GLU:HG2	1:A:267:LEU:HD12	1.55	0.88
1:A:273:ILE:H	1:A:273:ILE:CD1	1.86	0.88
1:B:268:LEU:HB3	1:B:274:MET:HG2	1.55	0.88
1:A:169:VAL:O	1:A:172:ALA:N	2.07	0.88
1:A:214:ASP:O	1:A:217:VAL:HG23	1.73	0.88
1:A:197:ILE:HG13	1:A:207:MET:HE1	1.53	0.88
1:A:236:GLN:HG3	1:A:240:TYR:CE2	2.10	0.87
1:A:142:ASN:HD21	1:A:176:SER:HB3	1.38	0.87
1:A:230:TYR:CE1	1:B:284:LYS:HA	2.10	0.87
1:B:184:CYS:HB2	1:B:196:ILE:HG13	1.55	0.87
1:B:268:LEU:HD22	1:B:273:ILE:CG2	2.04	0.87
1:B:54:GLN:HG2	1:B:55:ASN:N	1.90	0.87
1:A:33:VAL:HG22	1:A:121:PHE:HB2	1.57	0.87
1:A:8:TYR:CD2	1:A:164:ILE:HD11	2.11	0.86
1:A:141:GLU:O	1:A:143:LYS:HG2	1.76	0.85
1:B:10:LYS:HG2	1:B:13:ILE:HD13	1.58	0.85
1:B:72:LEU:HD13	1:B:112:GLU:HB3	1.58	0.85
1:B:3:ARG:HB2	1:B:121:PHE:CE1	2.11	0.84
1:B:182:LEU:HD13	1:B:205:THR:HG21	1.57	0.84

Continued on next page...

Continued from previous page...

Atom-1	Atom-2	Distance(Å)	Clash(Å)
1:B:197:ILE:HG12	1:B:207:MET:HE3	1.58	0.84
1:B:239:GLU:OE1	1:B:239:GLU:HA	1.78	0.84
1:A:151:CYS:CB	1:A:196:ILE:HD11	2.08	0.84
1:B:52:LYS:H	1:B:224:ARG:HH21	1.26	0.83
1:A:12:GLY:N	4:B:292:ADP:O1B	2.10	0.83
1:A:165:SER:HA	1:A:168:ILE:HD13	1.58	0.83
1:B:259:ILE:HG12	1:B:260:THR:N	1.94	0.83
1:B:243:LEU:O	1:B:247:VAL:HG23	1.78	0.83
1:B:268:LEU:CB	1:B:274:MET:HG2	2.09	0.83
1:B:6:ALA:CB	1:B:124:TYR:HB2	2.09	0.83
1:A:41:LYS:HZ2	4:B:292:ADP:C5'	1.90	0.83
1:B:160:ALA:O	1:B:164:ILE:HG13	1.77	0.82
1:A:103:ILE:HG22	1:A:104:THR:N	1.94	0.82
1:B:59:GLU:O	1:B:62:ALA:HB3	1.79	0.82
1:B:236:GLN:O	1:B:239:GLU:HB2	1.78	0.82
1:A:140:ARG:HG3	1:A:171:TYR:CE1	2.14	0.82
1:A:46:ARG:HD2	1:A:51:SER:O	1.77	0.82
1:A:209:HIS:CB	1:A:243:LEU:HD13	2.09	0.82
1:A:211:VAL:HG12	1:A:212:PRO:HD2	1.62	0.82
1:B:6:ALA:HB2	1:B:124:TYR:HB2	1.61	0.82
1:A:60:MET:HE2	1:A:74:ASP:HB3	1.61	0.82
1:A:45:THR:HG21	1:A:49:LEU:HD12	1.60	0.81
1:B:242:ALA:O	1:B:246:LYS:HG3	1.79	0.81
1:A:172:ALA:O	1:A:175:GLY:N	2.13	0.81
1:B:137:MET:CE	1:B:140:ARG:HD3	2.11	0.81
1:B:206:GLN:HE21	1:B:208:ILE:HD11	1.45	0.81
1:A:6:ALA:HB1	1:A:124:TYR:HB2	1.63	0.81
1:B:268:LEU:HD22	1:B:273:ILE:HG21	1.61	0.81
1:A:169:VAL:O	1:A:171:TYR:N	2.14	0.80
1:A:42:ALA:HB2	4:B:292:ADP:O2B	1.82	0.80
1:B:15:LYS:HE2	1:B:126:VAL:O	1.81	0.80
1:B:10:LYS:HB2	4:B:292:ADP:O2'	1.82	0.80
1:B:33:VAL:HG23	1:B:121:PHE:HB2	1.64	0.80
1:B:103:ILE:HG13	1:B:137:MET:HG2	1.64	0.79
1:A:45:THR:CG2	1:A:49:LEU:HD12	2.12	0.79
1:B:136:ALA:O	1:B:139:ILE:HB	1.81	0.79
1:B:214:ASP:HB3	1:B:236:GLN:NE2	1.97	0.79
1:A:57:ILE:HG13	1:A:75:VAL:CG1	2.12	0.79
1:A:238:ASP:OD1	1:A:241:ARG:NH1	2.15	0.79
1:B:221:GLU:O	1:B:224:ARG:N	2.14	0.79
1:B:231:ASP:HB3	1:B:234:ALA:HB2	1.64	0.79
1:A:230:TYR:O	1:A:232:PRO:HD3	1.83	0.79

Continued on next page...

Continued from previous page...

Atom-1	Atom-2	Distance(Å)	Clash(Å)
1:B:21:ASN:HD21	1:B:227:VAL:CG2	1.96	0.79
1:A:22:LEU:CD1	1:A:243:LEU:HD23	2.12	0.79
1:B:152:SER:OG	1:B:153:GLY:N	2.11	0.79
1:A:48:ILE:CG2	1:A:79:GLY:HA3	2.10	0.79
1:B:15:LYS:NZ	1:B:15:LYS:HB3	1.98	0.78
1:A:6:ALA:HB2	1:A:124:TYR:HB2	1.66	0.78
1:B:214:ASP:HB3	1:B:236:GLN:HE21	1.48	0.78
1:B:47:LEU:O	1:B:225:MET:HA	1.83	0.78
1:B:255:ILE:N	1:B:255:ILE:HD12	1.98	0.78
1:B:282:VAL:HG13	1:B:283:GLY:N	1.99	0.78
1:B:20:GLN:OE1	1:B:47:LEU:HB2	1.82	0.78
1:B:58:MET:HE1	1:B:101:GLY:HA2	1.66	0.77
1:B:66:THR:HG22	1:B:68:GLU:H	1.49	0.77
1:A:254:VAL:HG12	1:A:255:ILE:O	1.84	0.77
1:B:52:LYS:CA	1:B:224:ARG:HE	1.97	0.77
1:A:57:ILE:O	1:A:60:MET:N	2.18	0.77
1:A:14:GLY:HA2	5:A:5011:HOH:O	1.85	0.77
1:A:26:LEU:HD12	1:A:244:ALA:HB1	1.67	0.77
1:A:8:TYR:HB3	1:A:164:ILE:HD11	1.66	0.77
1:A:268:LEU:CB	1:A:274:MET:HG2	2.15	0.77
1:A:48:ILE:HG22	1:A:79:GLY:CA	2.12	0.76
1:B:156:MET:O	1:B:159:TYR:N	2.18	0.76
1:A:41:LYS:HD2	4:B:292:ADP:H5'2	1.67	0.76
1:A:41:LYS:HZ2	4:B:292:ADP:H5'2	1.50	0.76
1:A:281:ILE:HG23	1:B:223:ARG:O	1.86	0.76
1:B:54:GLN:HG2	1:B:55:ASN:H	1.47	0.76
1:B:166:LYS:O	1:B:170:LYS:HG2	1.84	0.76
1:B:23:VAL:HG11	1:B:33:VAL:HG11	1.66	0.75
1:A:197:ILE:HG13	1:A:207:MET:HE3	1.67	0.75
1:B:225:MET:HE1	1:B:230:TYR:HA	1.69	0.75
1:A:182:LEU:HD23	1:A:182:LEU:N	1.98	0.75
1:A:8:TYR:HB3	1:A:164:ILE:CD1	2.16	0.75
1:B:58:MET:CE	1:B:101:GLY:HA2	2.17	0.75
1:A:155:MET:HG3	1:A:156:MET:HG2	1.69	0.75
1:A:48:ILE:HG21	1:A:83:VAL:HB	1.69	0.74
1:B:178:ARG:HE	1:B:255:ILE:HD11	1.52	0.74
1:B:101:GLY:O	1:B:104:THR:HB	1.87	0.74
1:A:209:HIS:HE1	1:A:242:ALA:HB3	1.52	0.74
1:B:206:GLN:CD	1:B:252:LEU:HD23	2.06	0.74
1:B:244:ALA:O	1:B:248:VAL:HG23	1.88	0.74
1:B:56:THR:O	1:B:60:MET:HG2	1.87	0.74
1:A:252:LEU:O	1:A:253:LEU:HD23	1.88	0.74

Continued on next page...

Continued from previous page...

Atom-1	Atom-2	Distance(Å)	Clash(Å)
1:A:39:ASP:OD1	1:A:40:PRO:HD2	1.87	0.74
1:A:259:ILE:HG22	1:A:263:GLU:CB	2.18	0.73
1:A:266:GLU:HG2	1:A:267:LEU:N	2.01	0.73
1:B:140:ARG:HB2	1:B:171:TYR:CE2	2.24	0.73
1:A:41:LYS:NZ	4:B:292:ADP:H5'2	2.03	0.73
1:B:199:LEU:O	1:B:202:LYS:N	2.22	0.73
1:B:34:MET:HA	1:B:84:LYS:HA	1.71	0.73
1:A:57:ILE:HG13	1:A:75:VAL:HG13	1.71	0.72
1:B:182:LEU:N	1:B:182:LEU:CD1	2.52	0.72
1:A:274:MET:O	1:A:274:MET:HG3	1.89	0.72
1:B:250:ASN:OD1	1:B:252:LEU:N	2.22	0.72
1:A:137:MET:HB2	1:A:138:PRO:HD3	1.71	0.72
1:B:10:LYS:HD2	4:B:292:ADP:H1'	1.69	0.72
1:B:139:ILE:O	1:B:142:ASN:N	2.21	0.72
1:A:94:GLY:H	1:B:131:VAL:HG12	1.54	0.72
1:B:231:ASP:OD1	1:B:234:ALA:N	2.22	0.72
1:B:196:ILE:HD13	1:B:196:ILE:N	2.04	0.72
1:A:41:LYS:CE	4:B:292:ADP:H5'2	2.19	0.71
1:A:196:ILE:HG21	1:A:207:MET:HG3	1.70	0.71
1:B:126:VAL:HG12	1:B:127:LEU:N	2.05	0.71
1:B:52:LYS:H	1:B:224:ARG:NH2	1.87	0.71
1:B:21:ASN:HD21	1:B:227:VAL:HB	1.53	0.71
1:A:196:ILE:HG22	1:A:207:MET:CE	2.20	0.71
1:B:20:GLN:HE22	1:B:46:ARG:H	1.38	0.71
1:A:252:LEU:C	1:A:253:LEU:HD23	2.11	0.71
1:B:178:ARG:HH11	1:B:178:ARG:HG2	1.56	0.71
1:A:158:MET:CE	1:A:195:LEU:HD21	2.20	0.71
1:B:225:MET:HE3	1:B:230:TYR:HB2	1.71	0.71
1:B:21:ASN:HD21	1:B:227:VAL:CB	2.04	0.71
1:B:267:LEU:HD23	1:B:267:LEU:N	2.06	0.70
1:A:103:ILE:HG23	1:A:107:ASN:HD21	1.57	0.70
1:B:56:THR:CG2	1:B:59:GLU:HG3	2.21	0.70
1:B:264:LEU:HD23	1:B:264:LEU:O	1.91	0.70
1:B:3:ARG:NH2	1:B:146:GLU:OE1	2.23	0.70
1:B:282:VAL:CG1	1:B:283:GLY:N	2.53	0.70
1:A:139:ILE:O	1:A:142:ASN:N	2.24	0.70
1:B:39:ASP:OD1	1:B:41:LYS:N	2.24	0.70
1:B:72:LEU:CD1	1:B:112:GLU:HB3	2.21	0.70
1:A:186:SER:HB3	1:A:210:PHE:CE1	2.26	0.70
1:B:220:ALA:CB	1:B:227:VAL:HG22	2.21	0.70
1:A:252:LEU:O	1:A:252:LEU:HD23	1.92	0.70
1:B:3:ARG:NH1	1:B:248:VAL:HA	2.07	0.70

Continued on next page...

Continued from previous page...

Atom-1	Atom-2	Distance(Å)	Clash(Å)
1:A:142:ASN:HD21	1:A:176:SER:CB	2.04	0.69
1:A:8:TYR:CE1	1:A:126:VAL:HG21	2.26	0.69
1:B:274:MET:HG3	1:B:274:MET:O	1.92	0.69
1:B:196:ILE:HB	1:B:207:MET:CE	2.22	0.69
1:A:56:THR:OG1	1:A:59:GLU:HB2	1.92	0.69
1:B:140:ARG:HA	1:B:171:TYR:CD2	2.26	0.69
1:A:208:ILE:O	1:A:246:LYS:NZ	2.25	0.69
1:A:45:THR:HG22	1:A:46:ARG:N	2.07	0.69
1:B:64:ALA:HB1	1:B:69:ASP:CG	2.13	0.69
1:A:200:ALA:O	1:A:204:GLY:N	2.25	0.69
1:A:57:ILE:HG22	1:A:58:MET:N	2.05	0.69
1:B:34:MET:HG3	1:B:84:LYS:HB2	1.73	0.69
1:A:165:SER:HA	1:A:168:ILE:CD1	2.22	0.69
1:B:209:HIS:CD2	1:B:210:PHE:N	2.60	0.69
1:B:203:LEU:O	1:B:257:ASN:HB3	1.93	0.69
1:B:260:THR:OG1	1:B:262:ASP:HB2	1.92	0.69
1:A:211:VAL:CG1	1:A:212:PRO:HD2	2.22	0.69
1:B:178:ARG:NH1	1:B:178:ARG:HG2	2.08	0.69
1:B:178:ARG:HH21	1:B:255:ILE:HD11	1.58	0.69
1:A:60:MET:CE	1:A:74:ASP:HB3	2.23	0.69
1:A:196:ILE:HG22	1:A:207:MET:HE3	1.75	0.68
1:B:208:ILE:CG2	1:B:243:LEU:HD13	2.22	0.68
1:A:36:VAL:HG12	1:A:38:CYS:SG	2.34	0.68
1:A:238:ASP:O	1:A:241:ARG:N	2.27	0.68
1:A:46:ARG:HE	1:A:224:ARG:HG3	1.58	0.68
1:A:26:LEU:CD1	1:A:244:ALA:HB1	2.22	0.68
1:A:218:GLN:O	1:A:221:GLU:N	2.26	0.68
1:A:41:LYS:HZ2	4:B:292:ADP:H5'1	1.58	0.68
1:B:140:ARG:HA	1:B:171:TYR:CE2	2.28	0.68
1:B:23:VAL:CG1	1:B:33:VAL:HG11	2.23	0.68
1:B:56:THR:HG22	1:B:59:GLU:H	1.59	0.68
1:A:194:GLU:O	1:A:197:ILE:HB	1.93	0.68
1:A:271:PHE:HB2	1:A:273:ILE:HD13	1.74	0.68
1:B:243:LEU:HD12	1:B:243:LEU:O	1.93	0.68
1:B:3:ARG:HB2	1:B:121:PHE:CD1	2.29	0.68
1:B:139:ILE:HG22	1:B:140:ARG:N	2.08	0.67
1:B:255:ILE:O	1:B:256:PRO:O	2.12	0.67
1:A:281:ILE:HD13	1:B:224:ARG:HB3	1.76	0.67
1:B:217:VAL:O	1:B:220:ALA:N	2.27	0.67
1:A:214:ASP:OD1	1:A:216:VAL:HB	1.94	0.67
1:B:184:CYS:HB2	1:B:196:ILE:CG1	2.25	0.67
1:B:72:LEU:HD13	1:B:112:GLU:CB	2.23	0.67

Continued on next page...

Continued from previous page...

Atom-1	Atom-2	Distance(Å)	Clash(Å)
1:A:26:LEU:HD23	1:A:33:VAL:HG21	1.77	0.67
1:A:26:LEU:HD23	1:A:33:VAL:CG2	2.24	0.67
1:B:155:MET:O	1:B:155:MET:HG2	1.93	0.67
1:A:175:GLY:O	1:A:176:SER:HB2	1.94	0.67
1:A:206:GLN:HG2	1:A:252:LEU:HD22	1.75	0.67
1:B:260:THR:HG23	1:B:263:GLU:OE1	1.95	0.67
1:A:18:THR:HG21	1:A:185:ASN:HD21	1.59	0.66
1:B:260:THR:HG1	1:B:262:ASP:HB2	1.60	0.66
1:B:33:VAL:CG1	1:B:83:VAL:HG13	2.26	0.66
1:A:196:ILE:CG2	1:A:207:MET:HG3	2.25	0.66
1:A:103:ILE:O	1:A:106:ILE:N	2.29	0.66
1:A:152:SER:O	1:A:154:GLU:N	2.28	0.66
1:A:14:GLY:O	1:A:17:THR:N	2.29	0.66
1:B:216:VAL:O	1:B:220:ALA:N	2.29	0.66
1:B:257:ASN:OD1	1:B:258:PRO:HD2	1.95	0.66
1:A:192:GLU:O	1:A:195:LEU:N	2.29	0.66
1:B:126:VAL:HG12	1:B:127:LEU:H	1.59	0.66
1:B:137:MET:HE1	1:B:140:ARG:CD	2.22	0.66
1:B:225:MET:CE	1:B:230:TYR:HA	2.26	0.65
1:A:209:HIS:HE1	1:A:242:ALA:CB	2.09	0.65
1:B:154:GLU:OE2	1:B:156:MET:N	2.23	0.65
1:B:56:THR:HG22	1:B:59:GLU:HG3	1.78	0.65
1:B:196:ILE:CG2	1:B:207:MET:HE2	2.26	0.65
1:A:17:THR:HG22	1:A:18:THR:N	2.11	0.65
1:B:24:ALA:CB	1:B:228:ILE:HG13	2.26	0.65
1:B:188:ASN:HD21	1:B:213:ARG:HD2	1.61	0.65
1:A:186:SER:HB3	1:A:210:PHE:CZ	2.32	0.65
1:B:103:ILE:HG22	1:B:104:THR:N	2.11	0.65
1:B:23:VAL:O	1:B:26:LEU:N	2.30	0.65
1:A:214:ASP:O	1:A:216:VAL:N	2.30	0.65
1:A:147:ILE:HG22	1:A:179:LEU:HA	1.78	0.65
1:B:196:ILE:HB	1:B:207:MET:HE1	1.79	0.65
1:A:136:ALA:C	1:A:138:PRO:HD2	2.16	0.65
1:A:169:VAL:CG1	1:A:170:LYS:N	2.55	0.65
1:B:108:PHE:HD2	1:B:109:LEU:HD23	1.60	0.65
1:B:163:ASN:O	1:B:165:SER:N	2.30	0.65
1:A:236:GLN:HG3	1:A:240:TYR:HE2	1.62	0.65
1:A:201:ASN:O	1:A:204:GLY:N	2.29	0.64
1:A:209:HIS:CG	1:A:246:LYS:HZ2	2.14	0.64
1:B:39:ASP:OD1	1:B:40:PRO:HD2	1.96	0.64
1:B:31:LYS:NZ	1:B:248:VAL:HG11	2.12	0.64
1:B:54:GLN:NE2	1:B:55:ASN:O	2.26	0.64

Continued on next page...

Continued from previous page...

Atom-1	Atom-2	Distance(Å)	Clash(Å)
1:B:221:GLU:O	1:B:223:ARG:N	2.30	0.64
1:B:214:ASP:O	1:B:217:VAL:HG23	1.97	0.64
1:A:229:GLU:O	1:A:230:TYR:O	2.15	0.64
1:A:139:ILE:HG22	1:A:140:ARG:N	2.13	0.64
1:B:184:CYS:CB	1:B:196:ILE:HG13	2.26	0.64
1:A:126:VAL:HG12	1:A:127:LEU:H	1.62	0.64
1:A:168:ILE:O	1:A:169:VAL:O	2.15	0.64
1:A:209:HIS:HB2	1:A:243:LEU:CD1	2.24	0.64
1:A:209:HIS:CE1	1:A:242:ALA:HB3	2.32	0.64
1:B:162:ASN:ND2	1:B:259:ILE:HD13	2.12	0.64
1:B:255:ILE:N	1:B:255:ILE:CD1	2.60	0.64
1:B:192:GLU:O	1:B:195:LEU:N	2.31	0.64
1:A:80:TYR:O	1:A:83:VAL:HG23	1.98	0.64
1:B:162:ASN:O	1:B:166:LYS:HD3	1.97	0.64
1:A:21:ASN:HB2	1:A:240:TYR:CD1	2.33	0.64
1:B:22:LEU:CD1	1:B:243:LEU:HG	2.28	0.63
1:A:159:TYR:O	1:A:163:ASN:ND2	2.30	0.63
1:B:225:MET:CE	1:B:230:TYR:HB2	2.28	0.63
1:A:273:ILE:HD12	1:A:273:ILE:N	2.07	0.63
1:B:45:THR:O	1:B:45:THR:HG22	1.96	0.63
1:B:200:ALA:HB1	1:B:205:THR:O	1.99	0.63
1:A:47:LEU:HD23	1:A:224:ARG:C	2.19	0.63
1:B:3:ARG:HD3	1:B:121:PHE:HE1	1.64	0.63
1:A:181:GLY:C	1:A:182:LEU:HD23	2.18	0.63
1:B:24:ALA:HB2	1:B:226:THR:HG21	1.81	0.62
1:B:22:LEU:HD12	1:B:243:LEU:CD2	2.28	0.62
1:A:262:ASP:O	1:A:266:GLU:HB3	1.99	0.62
1:B:22:LEU:C	1:B:22:LEU:HD23	2.20	0.62
1:B:40:PRO:HD2	1:B:127:LEU:CD2	2.29	0.62
1:A:31:LYS:HG3	1:A:120:ASP:HB3	1.82	0.62
1:B:25:ALA:O	1:B:28:GLU:N	2.33	0.62
1:A:271:PHE:CD1	1:A:271:PHE:N	2.68	0.61
1:B:221:GLU:C	1:B:223:ARG:H	2.02	0.61
1:B:58:MET:O	1:B:62:ALA:N	2.26	0.61
1:B:260:THR:HG23	1:B:263:GLU:HG3	1.82	0.61
1:B:261:MET:O	1:B:264:LEU:N	2.33	0.61
1:A:147:ILE:O	1:A:180:GLY:N	2.32	0.61
1:A:102:VAL:O	1:A:105:ALA:HB3	2.00	0.61
1:B:169:VAL:HG12	1:B:170:LYS:N	2.15	0.61
1:B:236:GLN:HG3	1:B:240:TYR:CE2	2.36	0.61
1:A:126:VAL:HG12	1:A:127:LEU:N	2.14	0.61
1:A:149:ILE:HG12	1:A:164:ILE:HG21	1.83	0.61

Continued on next page...

Continued from previous page...

Atom-1	Atom-2	Distance(Å)	Clash(Å)
1:B:5:CYS:O	1:B:123:PHE:HA	2.00	0.61
1:B:33:VAL:HG22	1:B:34:MET:H	1.66	0.61
1:B:163:ASN:C	1:B:165:SER:H	2.03	0.61
1:B:236:GLN:HA	1:B:239:GLU:HB2	1.81	0.61
1:B:158:MET:HE2	1:B:195:LEU:HD21	1.83	0.61
1:B:196:ILE:HG22	1:B:207:MET:HE2	1.82	0.61
1:B:93:PRO:C	1:B:95:VAL:H	2.04	0.61
1:B:21:ASN:ND2	1:B:227:VAL:HB	2.15	0.60
1:A:33:VAL:HG12	1:A:34:MET:N	2.16	0.60
1:A:5:CYS:HB3	1:A:146:GLU:O	2.01	0.60
1:B:56:THR:HB	1:B:59:GLU:CD	2.21	0.60
1:B:137:MET:O	1:B:141:GLU:N	2.25	0.60
1:B:254:VAL:HG12	1:B:255:ILE:N	2.16	0.60
1:B:52:LYS:HA	1:B:224:ARG:HE	1.67	0.60
1:B:31:LYS:HZ1	1:B:248:VAL:HG11	1.64	0.60
1:A:45:THR:HG21	1:A:85:CYS:HB3	1.82	0.60
1:B:13:ILE:HG22	1:B:14:GLY:N	2.16	0.60
1:B:206:GLN:NE2	1:B:208:ILE:HD11	2.13	0.60
1:A:73:GLU:O	1:A:75:VAL:N	2.35	0.60
1:B:80:TYR:OH	1:B:228:ILE:HG22	2.00	0.60
1:A:41:LYS:NZ	1:A:129:ASP:OD2	2.34	0.60
1:B:160:ALA:C	1:B:164:ILE:HG13	2.22	0.60
1:B:242:ALA:C	1:B:246:LYS:HG3	2.22	0.59
1:A:8:TYR:CE1	1:A:126:VAL:HG11	2.37	0.59
1:A:93:PRO:O	1:A:95:VAL:N	2.34	0.59
1:B:166:LYS:HD2	1:B:258:PRO:HB3	1.84	0.59
1:B:184:CYS:HB2	1:B:196:ILE:HG21	1.84	0.59
1:A:184:CYS:HB2	1:A:196:ILE:HD12	1.85	0.59
1:A:195:LEU:O	1:A:198:ALA:N	2.35	0.59
1:A:270:GLU:HB3	1:A:271:PHE:CD1	2.37	0.59
1:B:162:ASN:ND2	1:B:259:ILE:HG23	2.18	0.59
1:A:10:LYS:NZ	1:A:154:GLU:OE2	2.33	0.59
1:A:178:ARG:HG3	1:A:255:ILE:CD1	2.33	0.59
1:B:177:VAL:O	1:B:178:ARG:HG2	2.02	0.59
1:A:206:GLN:HG2	1:A:252:LEU:CD2	2.33	0.59
1:A:41:LYS:HD3	4:B:292:ADP:C8	2.37	0.59
1:B:10:LYS:HG3	1:B:11:GLY:N	2.18	0.59
1:A:92:GLU:OE2	1:A:95:VAL:O	2.20	0.59
1:A:47:LEU:HD23	1:A:225:MET:N	2.18	0.59
1:B:214:ASP:O	1:B:216:VAL:N	2.36	0.59
1:B:178:ARG:HH11	1:B:178:ARG:CG	2.16	0.59
1:B:178:ARG:NE	1:B:255:ILE:HD11	2.17	0.59

Continued on next page...

Continued from previous page...

Atom-1	Atom-2	Distance(Å)	Clash(Å)
1:B:206:GLN:HE21	1:B:208:ILE:CD1	2.14	0.58
1:B:221:GLU:C	1:B:223:ARG:N	2.56	0.58
1:A:214:ASP:O	1:A:217:VAL:N	2.34	0.58
1:B:135:PHE:O	1:B:138:PRO:HD2	2.04	0.58
1:A:236:GLN:HA	1:A:236:GLN:OE1	2.04	0.58
1:B:178:ARG:NH2	1:B:255:ILE:HD11	2.19	0.58
1:B:225:MET:HE3	1:B:230:TYR:CA	2.34	0.58
1:A:41:LYS:HD3	4:B:292:ADP:N7	2.19	0.58
1:A:66:THR:O	1:A:69:ASP:OD2	2.22	0.58
1:A:137:MET:N	1:A:138:PRO:HD2	2.18	0.58
1:A:106:ILE:HG22	1:A:110:GLU:OE2	2.03	0.57
1:A:266:GLU:O	1:A:270:GLU:N	2.33	0.57
1:A:248:VAL:O	1:A:248:VAL:HG12	2.04	0.57
1:B:43:ASP:HB3	1:B:46:ARG:HB2	1.85	0.57
1:A:41:LYS:HD2	4:B:292:ADP:C5'	2.34	0.57
1:B:182:LEU:CD1	1:B:205:THR:HG21	2.34	0.57
1:A:33:VAL:CG1	1:A:34:MET:N	2.67	0.57
1:A:270:GLU:HB3	1:A:271:PHE:HD1	1.69	0.57
1:A:213:ARG:HG3	1:A:213:ARG:O	2.04	0.57
1:B:40:PRO:CD	1:B:41:LYS:H	2.16	0.57
1:A:259:ILE:HG22	1:A:263:GLU:HB2	1.87	0.57
1:B:162:ASN:O	1:B:165:SER:HB2	2.05	0.57
1:A:183:ILE:HD13	1:A:243:LEU:HD21	1.85	0.57
1:A:76:LEU:HD12	1:A:86:VAL:CG2	2.34	0.57
1:A:162:ASN:O	1:A:166:LYS:HG3	2.05	0.57
1:A:95:VAL:HG12	1:A:95:VAL:O	2.05	0.57
1:B:35:ILE:HG12	1:B:45:THR:OG1	2.04	0.57
1:B:165:SER:C	1:B:167:GLY:N	2.55	0.57
1:B:106:ILE:O	1:B:110:GLU:HG3	2.04	0.56
1:B:197:ILE:HG12	1:B:207:MET:CE	2.33	0.56
1:A:259:ILE:HG22	1:A:263:GLU:HB3	1.86	0.56
1:B:225:MET:CE	1:B:230:TYR:CA	2.83	0.56
1:B:24:ALA:HB1	1:B:228:ILE:HG13	1.87	0.56
1:A:230:TYR:CD1	1:B:284:LYS:CB	2.88	0.56
1:B:22:LEU:HD12	1:B:243:LEU:HG	1.88	0.56
1:A:6:ALA:HA	1:A:124:TYR:H	1.71	0.56
1:B:208:ILE:HG22	1:B:243:LEU:HD13	1.88	0.56
1:A:66:THR:HG22	1:A:68:GLU:H	1.69	0.56
1:A:271:PHE:CB	1:A:273:ILE:HD13	2.35	0.56
1:B:137:MET:CE	1:B:141:GLU:HG2	2.35	0.56
1:B:140:ARG:HG2	1:B:141:GLU:N	2.21	0.56
1:B:236:GLN:O	1:B:239:GLU:CB	2.53	0.56

Continued on next page...

Continued from previous page...

Atom-1	Atom-2	Distance(Å)	Clash(Å)
1:B:243:LEU:HD12	1:B:247:VAL:HG23	1.88	0.56
1:A:88:SER:OG	1:A:89:GLY:N	2.38	0.55
1:A:103:ILE:HG23	1:A:107:ASN:ND2	2.21	0.55
1:B:260:THR:HG23	1:B:263:GLU:CG	2.36	0.55
1:B:225:MET:SD	1:B:229:GLU:HG2	2.47	0.55
1:A:264:LEU:O	1:A:268:LEU:HD12	2.07	0.55
1:A:165:SER:O	1:A:167:GLY:N	2.39	0.55
1:A:220:ALA:HB1	1:A:225:MET:O	2.05	0.55
1:B:52:LYS:CB	1:B:224:ARG:HH21	2.20	0.55
1:A:41:LYS:NZ	4:B:292:ADP:C5'	2.64	0.55
1:B:225:MET:HE3	1:B:230:TYR:CB	2.36	0.55
1:A:24:ALA:O	1:A:27:ALA:HB3	2.06	0.55
1:B:105:ALA:O	1:B:108:PHE:HB3	2.07	0.55
1:B:178:ARG:HE	1:B:255:ILE:CD1	2.19	0.55
1:B:241:ARG:O	1:B:244:ALA:HB3	2.06	0.55
1:B:83:VAL:HG22	5:B:295:HOH:O	2.06	0.55
1:B:150:VAL:O	1:B:150:VAL:HG12	2.06	0.55
1:A:232:PRO:O	1:A:241:ARG:NH2	2.40	0.55
1:B:25:ALA:O	1:B:27:ALA:N	2.39	0.55
1:B:182:LEU:N	1:B:182:LEU:HD13	2.22	0.55
1:A:49:LEU:HD11	1:A:85:CYS:HB2	1.88	0.54
1:A:45:THR:CG2	1:A:85:CYS:HB3	2.37	0.54
1:B:15:LYS:HZ1	1:B:15:LYS:HB3	1.69	0.54
1:B:163:ASN:C	1:B:165:SER:N	2.61	0.54
1:A:22:LEU:HD11	1:A:243:LEU:HD23	1.88	0.54
1:A:4:GLN:O	1:A:145:GLN:N	2.24	0.54
1:B:33:VAL:HG22	1:B:34:MET:N	2.23	0.54
1:A:186:SER:HB2	1:A:192:GLU:OE1	2.08	0.54
1:A:46:ARG:HG2	1:A:47:LEU:HG	1.88	0.54
1:A:137:MET:N	1:A:138:PRO:CD	2.71	0.54
1:B:10:LYS:HB2	4:B:292:ADP:HO2'	1.72	0.54
1:B:225:MET:HG3	1:B:225:MET:O	2.07	0.54
1:B:56:THR:HG23	1:B:58:MET:H	1.73	0.54
1:B:92:GLU:O	1:B:95:VAL:O	2.26	0.54
1:B:3:ARG:HD3	1:B:121:PHE:CE1	2.42	0.54
1:A:127:LEU:HG	1:A:129:ASP:H	1.73	0.54
1:B:3:ARG:O	1:B:121:PHE:HA	2.08	0.54
1:B:29:MET:HE1	1:B:245:ARG:N	2.23	0.53
1:B:260:THR:HG23	1:B:263:GLU:CD	2.29	0.53
1:A:103:ILE:CG2	1:A:107:ASN:HD21	2.21	0.53
1:A:142:ASN:OD1	1:A:145:GLN:NE2	2.41	0.53
1:A:227:VAL:HG11	1:A:236:GLN:HB3	1.89	0.53

Continued on next page...

Continued from previous page...

Atom-1	Atom-2	Distance(Å)	Clash(Å)
1:B:196:ILE:HB	1:B:207:MET:HE2	1.90	0.53
1:B:33:VAL:HG12	1:B:83:VAL:HG13	1.90	0.53
1:B:212:PRO:HG3	1:B:239:GLU:OE2	2.08	0.53
1:A:261:MET:O	1:A:264:LEU:HB3	2.08	0.53
1:A:193:ASP:O	1:A:197:ILE:HD12	2.09	0.53
1:B:7:ILE:HG12	1:B:19:THR:OG1	2.08	0.53
1:B:21:ASN:ND2	1:B:240:TYR:CE2	2.74	0.53
1:A:41:LYS:HE3	1:A:127:LEU:HD21	1.91	0.53
1:B:267:LEU:HD23	1:B:267:LEU:H	1.73	0.53
1:A:259:ILE:CG2	1:A:263:GLU:HB3	2.37	0.53
1:A:218:GLN:O	1:A:220:ALA:N	2.41	0.53
1:A:263:GLU:O	1:A:267:LEU:HD13	2.09	0.53
1:A:230:TYR:C	1:B:284:LYS:CB	2.78	0.53
1:B:10:LYS:HG3	4:B:292:ADP:O3'	2.09	0.53
1:B:52:LYS:N	1:B:224:ARG:HH21	2.01	0.53
1:B:255:ILE:CD1	1:B:255:ILE:H	2.22	0.53
1:A:110:GLU:CD	1:A:143:LYS:HZ2	2.12	0.52
1:A:253:LEU:HD23	1:A:253:LEU:N	2.20	0.52
1:B:109:LEU:HB3	1:B:115:TYR:CE1	2.44	0.52
1:B:106:ILE:HG21	1:B:143:LYS:HG2	1.90	0.52
1:A:76:LEU:HD12	1:A:86:VAL:HG21	1.91	0.52
1:B:10:LYS:CG	1:B:11:GLY:N	2.72	0.52
1:A:130:VAL:O	1:A:130:VAL:HG13	2.08	0.52
1:A:8:TYR:HE1	1:A:126:VAL:HG21	1.74	0.52
1:B:52:LYS:N	1:B:224:ARG:HE	2.07	0.52
1:B:185:ASN:O	1:B:192:GLU:OE2	2.27	0.52
1:B:200:ALA:O	1:B:203:LEU:HB2	2.10	0.52
1:A:97:CYS:SG	1:A:98:ALA:N	2.82	0.52
1:B:235:LYS:O	1:B:238:ASP:OD2	2.27	0.52
1:A:169:VAL:HG12	1:A:170:LYS:H	1.68	0.52
1:B:5:CYS:HB2	1:B:123:PHE:CE1	2.45	0.52
1:B:144:ALA:O	1:B:177:VAL:HG12	2.09	0.52
1:B:262:ASP:O	1:B:265:GLU:HB2	2.09	0.52
1:A:13:ILE:O	1:A:13:ILE:HG22	2.09	0.52
1:B:107:ASN:O	1:B:111:GLU:HB3	2.10	0.52
1:B:268:LEU:HB2	1:B:274:MET:HG2	1.87	0.52
1:B:4:GLN:HA	1:B:122:VAL:HB	1.92	0.52
1:B:45:THR:CG2	1:B:85:CYS:HB3	2.40	0.52
1:A:2:MET:O	1:A:2:MET:HG2	2.08	0.52
1:B:7:ILE:HD12	1:B:7:ILE:N	2.25	0.52
1:B:5:CYS:O	1:B:122:VAL:O	2.27	0.52
1:B:140:ARG:CA	1:B:171:TYR:CE2	2.93	0.52

Continued on next page...

Continued from previous page...

Atom-1	Atom-2	Distance(Å)	Clash(Å)
1:B:163:ASN:O	1:B:166:LYS:HG2	2.10	0.52
1:A:271:PHE:HD1	1:A:271:PHE:N	2.07	0.51
1:A:42:ALA:O	1:A:43:ASP:OD1	2.28	0.51
1:B:224:ARG:O	1:B:225:MET:HB3	2.10	0.51
1:B:195:LEU:HD13	1:B:271:PHE:HB2	1.92	0.51
1:A:136:ALA:O	1:A:139:ILE:N	2.42	0.51
1:B:10:LYS:HD2	4:B:292:ADP:C1'	2.38	0.51
1:B:140:ARG:HB2	1:B:171:TYR:CZ	2.45	0.51
1:B:160:ALA:O	1:B:163:ASN:N	2.42	0.51
1:B:182:LEU:N	1:B:182:LEU:HD12	2.26	0.51
1:B:216:VAL:CG1	1:B:217:VAL:N	2.73	0.51
1:B:22:LEU:HD11	1:B:243:LEU:HG	1.92	0.51
1:A:261:MET:O	1:A:264:LEU:N	2.44	0.51
1:A:67:VAL:HG12	1:A:108:PHE:CD2	2.45	0.51
1:A:230:TYR:CD1	1:B:284:LYS:HA	2.46	0.51
1:B:140:ARG:CB	1:B:171:TYR:CE2	2.94	0.51
1:B:194:GLU:O	1:B:197:ILE:HB	2.10	0.51
1:A:15:LYS:CE	1:A:125:ASP:OD1	2.58	0.51
1:A:208:ILE:HG22	1:A:243:LEU:CD1	2.40	0.51
1:B:29:MET:HE1	1:B:244:ALA:CB	2.41	0.51
1:B:124:TYR:CD2	1:B:144:ALA:HB2	2.45	0.51
1:B:3:ARG:HH12	1:B:248:VAL:HA	1.74	0.51
1:B:29:MET:HE1	1:B:244:ALA:HB3	1.93	0.51
1:B:209:HIS:HE1	1:B:242:ALA:HB3	1.75	0.51
1:A:263:GLU:O	1:A:266:GLU:HB3	2.11	0.51
1:B:137:MET:HE3	1:B:140:ARG:HG2	1.93	0.51
1:B:5:CYS:CB	1:B:123:PHE:CE1	2.94	0.51
1:B:59:GLU:C	1:B:62:ALA:HB3	2.31	0.51
1:B:109:LEU:HB3	1:B:115:TYR:HE1	1.76	0.51
1:B:66:THR:CG2	1:B:67:VAL:N	2.74	0.51
1:B:34:MET:HG3	1:B:84:LYS:CB	2.40	0.50
1:B:269:MET:O	1:B:272:GLY:N	2.43	0.50
1:A:8:TYR:CD1	1:A:126:VAL:HB	2.46	0.50
1:B:126:VAL:CG1	1:B:127:LEU:N	2.74	0.50
1:A:230:TYR:HE1	1:B:284:LYS:HA	1.72	0.50
1:A:179:LEU:HD23	1:A:256:PRO:HG3	1.93	0.50
1:B:280:SER:O	1:B:281:ILE:HB	2.11	0.50
1:A:158:MET:HE2	1:A:195:LEU:HD21	1.91	0.50
1:A:191:ARG:CB	1:A:271:PHE:HD2	2.24	0.50
1:A:266:GLU:O	1:A:269:MET:HB2	2.11	0.50
1:A:8:TYR:HB3	1:A:164:ILE:HD13	1.92	0.50
1:B:58:MET:HE2	1:B:101:GLY:CA	2.42	0.50

Continued on next page...

Continued from previous page...

Atom-1	Atom-2	Distance(Å)	Clash(Å)
1:B:24:ALA:HB3	1:B:228:ILE:HG13	1.93	0.50
1:B:21:ASN:HD21	1:B:227:VAL:HG21	1.74	0.50
1:B:10:LYS:HG3	1:B:11:GLY:O	2.12	0.50
1:B:156:MET:HB3	4:B:292:ADP:C1'	2.42	0.50
1:B:156:MET:HB3	4:B:292:ADP:O4'	2.12	0.50
1:A:140:ARG:CG	1:A:171:TYR:HE1	2.14	0.50
1:B:135:PHE:C	1:B:137:MET:H	2.13	0.50
1:A:94:GLY:N	1:B:131:VAL:HG12	2.24	0.50
1:B:199:LEU:O	1:B:200:ALA:C	2.50	0.50
1:B:209:HIS:ND1	1:B:243:LEU:HB2	2.27	0.50
1:A:265:GLU:O	1:A:268:LEU:N	2.45	0.50
1:B:4:GLN:NE2	1:B:143:LYS:O	2.45	0.49
1:B:29:MET:CE	1:B:244:ALA:HB3	2.42	0.49
1:B:3:ARG:HB2	1:B:121:PHE:HE1	1.71	0.49
1:A:46:ARG:O	1:A:50:HIS:N	2.44	0.49
1:B:178:ARG:NH2	1:B:255:ILE:HG13	2.26	0.49
1:B:137:MET:N	1:B:138:PRO:CD	2.75	0.49
1:B:140:ARG:CG	1:B:141:GLU:N	2.74	0.49
1:B:209:HIS:HD2	1:B:210:PHE:N	1.87	0.49
1:B:282:VAL:HG13	1:B:283:GLY:CA	2.43	0.49
1:A:106:ILE:HG23	1:A:115:TYR:OH	2.12	0.49
1:A:161:ALA:O	1:A:165:SER:N	2.40	0.49
1:B:156:MET:SD	4:B:292:ADP:C8	3.06	0.49
1:B:45:THR:HG21	1:B:85:CYS:HB3	1.95	0.49
1:B:34:MET:CG	1:B:84:LYS:HA	2.42	0.49
1:B:186:SER:HB2	1:B:211:VAL:O	2.12	0.49
1:B:40:PRO:HD2	1:B:127:LEU:HD22	1.92	0.49
1:B:154:GLU:OE2	1:B:156:MET:HB2	2.12	0.49
1:B:188:ASN:ND2	1:B:213:ARG:HD2	2.26	0.49
1:B:37:GLY:HA3	1:B:44:SER:HB2	1.95	0.49
1:B:236:GLN:CA	1:B:239:GLU:HB2	2.43	0.49
1:A:22:LEU:O	1:A:24:ALA:N	2.45	0.49
1:A:167:GLY:O	1:A:171:TYR:HD2	1.96	0.49
1:A:41:LYS:HD3	4:B:292:ADP:H5'2	1.89	0.49
1:B:56:THR:HG22	1:B:59:GLU:N	2.27	0.49
1:B:188:ASN:HD21	1:B:213:ARG:CD	2.25	0.49
1:B:56:THR:HG23	1:B:58:MET:N	2.27	0.49
1:B:220:ALA:HB3	1:B:227:VAL:HG22	1.93	0.49
1:B:135:PHE:CD1	1:B:135:PHE:N	2.81	0.49
1:B:52:LYS:CB	1:B:224:ARG:NH2	2.76	0.49
1:B:33:VAL:HG23	1:B:121:PHE:CB	2.40	0.49
1:B:10:LYS:O	1:B:15:LYS:HD3	2.13	0.48

Continued on next page...

Continued from previous page...

Atom-1	Atom-2	Distance(Å)	Clash(Å)
1:B:259:ILE:HG12	1:B:260:THR:O	2.13	0.48
1:A:238:ASP:O	1:A:242:ALA:N	2.43	0.48
1:B:137:MET:HE2	1:B:141:GLU:HG2	1.95	0.48
1:B:102:VAL:O	1:B:106:ILE:HG13	2.12	0.48
1:A:156:MET:HA	1:A:159:TYR:HB3	1.95	0.48
1:A:98:ALA:O	1:A:101:GLY:N	2.46	0.48
1:A:186:SER:CB	1:A:210:PHE:CZ	2.96	0.48
1:A:236:GLN:CG	1:A:240:TYR:HE2	2.26	0.48
1:B:178:ARG:NH2	1:B:255:ILE:CG1	2.76	0.48
1:A:73:GLU:C	1:A:75:VAL:H	2.16	0.48
1:A:5:CYS:HB3	1:A:146:GLU:HB3	1.95	0.48
1:A:7:ILE:HD13	1:A:19:THR:OG1	2.11	0.48
1:A:171:TYR:HA	1:A:174:SER:OG	2.13	0.48
1:A:46:ARG:CG	1:A:47:LEU:HG	2.43	0.48
1:B:55:ASN:HB3	1:B:60:MET:SD	2.54	0.48
1:B:210:PHE:CD1	1:B:210:PHE:C	2.85	0.48
1:A:109:LEU:HB2	1:A:115:TYR:HE1	1.78	0.48
1:B:108:PHE:O	1:B:111:GLU:HB3	2.14	0.48
1:B:183:ILE:HG22	1:B:183:ILE:O	2.13	0.48
1:B:207:MET:O	1:B:207:MET:HG2	2.12	0.48
1:B:137:MET:O	1:B:141:GLU:HB2	2.14	0.48
1:B:192:GLU:O	1:B:193:ASP:O	2.32	0.48
1:B:72:LEU:O	1:B:74:ASP:N	2.47	0.48
1:B:232:PRO:CD	1:B:233:LYS:H	2.26	0.48
1:A:272:GLY:O	1:A:275:GLU:N	2.47	0.48
1:A:197:ILE:O	1:A:200:ALA:HB3	2.13	0.48
1:A:186:SER:CB	1:A:210:PHE:CE1	2.95	0.48
1:B:22:LEU:HD23	1:B:22:LEU:O	2.13	0.48
1:B:259:ILE:CD1	1:B:260:THR:O	2.62	0.48
1:A:15:LYS:NZ	1:A:125:ASP:OD1	2.45	0.48
1:A:5:CYS:O	1:A:122:VAL:O	2.32	0.48
1:B:80:TYR:O	1:B:83:VAL:HG23	2.13	0.48
1:B:22:LEU:HD12	1:B:243:LEU:CG	2.44	0.48
1:B:196:ILE:CB	1:B:207:MET:HE2	2.44	0.48
1:A:168:ILE:H	1:A:168:ILE:CD1	2.12	0.47
1:B:56:THR:HG23	1:B:57:ILE:N	2.28	0.47
1:B:192:GLU:O	1:B:193:ASP:C	2.51	0.47
1:B:211:VAL:CG1	1:B:212:PRO:HD2	2.44	0.47
1:B:243:LEU:HA	1:B:246:LYS:HB2	1.96	0.47
1:B:254:VAL:CG1	1:B:255:ILE:N	2.77	0.47
1:B:187:ARG:C	1:B:189:THR:H	2.17	0.47
1:A:171:TYR:HA	1:A:174:SER:CB	2.44	0.47

Continued on next page...

Continued from previous page...

Atom-1	Atom-2	Distance(Å)	Clash(Å)
1:B:110:GLU:O	1:B:113:GLY:HA2	2.14	0.47
1:A:57:ILE:CG1	1:A:75:VAL:CG1	2.86	0.47
1:A:8:TYR:CE2	1:A:126:VAL:HG11	2.45	0.47
1:A:209:HIS:CG	1:A:246:LYS:NZ	2.82	0.47
1:A:140:ARG:CG	1:A:171:TYR:CE1	2.91	0.47
1:A:158:MET:HE1	1:A:195:LEU:HD21	1.94	0.47
1:B:3:ARG:HH12	1:B:248:VAL:CA	2.26	0.47
1:A:158:MET:HE3	1:A:158:MET:HB3	1.56	0.47
1:A:46:ARG:HE	1:A:224:ARG:CG	2.26	0.47
1:B:208:ILE:HG21	1:B:243:LEU:CD1	2.45	0.47
1:A:33:VAL:HG22	1:A:121:PHE:CB	2.36	0.47
1:B:269:MET:O	1:B:272:GLY:HA2	2.14	0.47
1:B:232:PRO:HD2	1:B:233:LYS:H	1.80	0.47
1:A:9:GLY:O	1:A:127:LEU:HD12	2.14	0.47
1:A:165:SER:O	1:A:166:LYS:C	2.52	0.47
1:A:43:ASP:O	1:A:45:THR:O	2.32	0.47
1:B:186:SER:N	1:B:211:VAL:O	2.48	0.47
1:A:109:LEU:O	1:A:114:ALA:N	2.43	0.47
1:A:45:THR:O	1:A:46:ARG:HB2	2.15	0.47
1:B:151:CYS:SG	1:B:152:SER:N	2.86	0.47
1:B:58:MET:HE2	1:B:101:GLY:HA2	1.95	0.47
1:B:137:MET:HE3	1:B:141:GLU:HG2	1.96	0.47
1:B:225:MET:CE	1:B:230:TYR:CB	2.92	0.47
1:B:4:GLN:HG2	1:B:122:VAL:HB	1.96	0.47
1:B:58:MET:CE	1:B:101:GLY:CA	2.92	0.47
1:B:239:GLU:O	1:B:242:ALA:HB3	2.15	0.47
1:A:116:GLU:HB2	1:A:117:ASP:H	1.58	0.47
1:A:164:ILE:HG22	1:A:165:SER:N	2.30	0.47
1:B:25:ALA:HB1	1:B:241:ARG:HA	1.97	0.47
1:A:64:ALA:HB1	1:A:69:ASP:OD2	2.15	0.47
1:A:225:MET:HE2	1:A:229:GLU:HB3	1.97	0.47
1:B:109:LEU:CB	1:B:115:TYR:HE1	2.27	0.47
1:B:20:GLN:NE2	1:B:44:SER:O	2.38	0.47
1:B:33:VAL:HG12	5:B:295:HOH:O	2.14	0.47
1:A:61:ALA:HB1	1:A:67:VAL:HG22	1.97	0.47
1:B:149:ILE:O	1:B:149:ILE:HG22	2.15	0.47
1:A:164:ILE:CG2	1:A:165:SER:N	2.77	0.46
1:A:173:ASN:HD22	1:A:174:SER:N	2.13	0.46
1:A:109:LEU:CB	1:A:115:TYR:HE1	2.28	0.46
1:A:194:GLU:CB	1:A:271:PHE:HE2	2.27	0.46
1:B:129:ASP:O	4:B:292:ADP:C2	2.68	0.46
1:B:45:THR:O	1:B:45:THR:CG2	2.63	0.46

Continued on next page...

Continued from previous page...

Atom-1	Atom-2	Distance(Å)	Clash(Å)
1:B:243:LEU:C	1:B:243:LEU:HD12	2.36	0.46
1:A:151:CYS:SG	1:A:152:SER:N	2.88	0.46
1:A:189:THR:HB	1:A:192:GLU:HG3	1.97	0.46
1:A:238:ASP:HA	1:A:241:ARG:HB2	1.96	0.46
1:B:108:PHE:CD2	1:B:109:LEU:HD23	2.46	0.46
1:A:45:THR:HG21	1:A:49:LEU:CD1	2.39	0.46
1:A:45:THR:CG2	1:A:46:ARG:N	2.75	0.46
1:B:9:GLY:O	1:B:15:LYS:CD	2.63	0.46
1:B:9:GLY:O	1:B:15:LYS:HD3	2.16	0.46
1:B:208:ILE:CG2	1:B:243:LEU:CD1	2.91	0.46
1:B:93:PRO:O	1:B:95:VAL:N	2.45	0.46
1:B:235:LYS:HA	1:B:238:ASP:OD2	2.15	0.46
1:A:271:PHE:HB2	1:A:273:ILE:CD1	2.45	0.46
1:A:8:TYR:HD2	1:A:164:ILE:CD1	2.16	0.46
1:B:217:VAL:O	1:B:220:ALA:HB3	2.16	0.46
1:B:243:LEU:O	1:B:246:LYS:HB2	2.15	0.46
1:B:231:ASP:O	1:B:234:ALA:N	2.43	0.46
1:B:135:PHE:C	1:B:137:MET:N	2.69	0.46
1:B:20:GLN:HE21	1:B:44:SER:C	2.19	0.46
1:A:3:ARG:HD3	1:A:121:PHE:CE1	2.50	0.46
1:B:152:SER:C	1:B:154:GLU:H	2.18	0.46
1:B:205:THR:HG23	1:B:206:GLN:N	2.30	0.46
1:A:178:ARG:HB3	1:A:253:LEU:HB3	1.98	0.46
1:B:37:GLY:CA	1:B:44:SER:HB2	2.45	0.46
1:B:236:GLN:O	1:B:239:GLU:N	2.48	0.46
1:A:3:ARG:NH1	1:A:248:VAL:HA	2.31	0.46
1:B:178:ARG:HH21	1:B:255:ILE:CD1	2.24	0.46
1:A:14:GLY:O	1:A:17:THR:HB	2.16	0.46
1:A:151:CYS:SG	1:A:196:ILE:HD11	2.55	0.45
1:B:133:GLY:O	1:B:134:GLY:C	2.54	0.45
1:A:26:LEU:CD1	1:A:244:ALA:CB	2.91	0.45
1:A:164:ILE:O	1:A:168:ILE:HD12	2.17	0.45
1:A:266:GLU:O	1:A:269:MET:N	2.49	0.45
4:B:292:ADP:O3B	5:B:5012:HOH:O	2.21	0.45
1:B:33:VAL:HG21	1:B:123:PHE:HD2	1.80	0.45
1:B:147:ILE:HD12	1:B:168:ILE:HD12	1.99	0.45
1:B:264:LEU:C	1:B:264:LEU:HD23	2.35	0.45
1:A:66:THR:HB	1:A:69:ASP:OD2	2.16	0.45
1:A:26:LEU:CD2	1:A:33:VAL:HG21	2.45	0.45
1:A:14:GLY:O	1:A:15:LYS:C	2.53	0.45
1:A:137:MET:C	1:A:139:ILE:N	2.70	0.45
1:B:56:THR:CG2	1:B:58:MET:N	2.78	0.45

Continued on next page...

Continued from previous page...

Atom-1	Atom-2	Distance(Å)	Clash(Å)
1:A:139:ILE:O	1:A:141:GLU:N	2.49	0.45
1:A:257:ASN:ND2	1:A:257:ASN:O	2.50	0.45
1:B:26:LEU:HD21	1:B:121:PHE:CD2	2.51	0.45
1:B:49:LEU:O	1:B:50:HIS:HB2	2.17	0.45
1:B:211:VAL:HA	1:B:212:PRO:HD3	1.85	0.45
1:A:212:PRO:HG2	1:A:236:GLN:HE22	1.81	0.45
1:A:155:MET:SD	1:A:155:MET:O	2.75	0.45
1:A:36:VAL:O	1:A:38:CYS:SG	2.73	0.45
1:A:12:GLY:H	4:B:292:ADP:PB	2.33	0.45
1:A:165:SER:C	1:A:167:GLY:N	2.68	0.45
1:B:160:ALA:HB1	1:B:164:ILE:HD11	1.99	0.45
1:B:126:VAL:CG1	1:B:127:LEU:H	2.26	0.45
1:B:52:LYS:CB	1:B:224:ARG:HE	2.29	0.45
1:A:25:ALA:O	1:A:27:ALA:N	2.50	0.45
1:A:136:ALA:O	1:A:139:ILE:CB	2.57	0.45
1:B:39:ASP:OD1	1:B:41:LYS:HB2	2.17	0.45
1:B:145:GLN:NE2	1:B:176:SER:HB2	2.32	0.45
1:A:281:ILE:HG22	1:A:281:ILE:O	2.17	0.44
1:B:225:MET:HE3	1:B:230:TYR:N	2.32	0.44
1:B:25:ALA:C	1:B:27:ALA:N	2.70	0.44
1:B:266:GLU:O	1:B:269:MET:N	2.50	0.44
1:A:103:ILE:O	1:A:105:ALA:N	2.50	0.44
1:A:242:ALA:O	1:A:246:LYS:HG3	2.18	0.44
1:A:22:LEU:HD11	1:A:243:LEU:CD2	2.46	0.44
1:A:255:ILE:HD12	1:A:255:ILE:HA	1.60	0.44
1:A:266:GLU:HA	1:A:269:MET:HB2	1.99	0.44
1:A:95:VAL:HG23	1:B:171:TYR:CE1	2.52	0.44
1:B:211:VAL:HG12	1:B:212:PRO:HD2	1.99	0.44
1:B:214:ASP:O	1:B:216:VAL:HG12	2.16	0.44
1:B:236:GLN:C	1:B:239:GLU:HB2	2.34	0.44
1:A:103:ILE:O	1:A:104:THR:C	2.55	0.44
1:A:137:MET:CB	1:A:138:PRO:CD	2.93	0.44
1:B:108:PHE:O	1:B:111:GLU:N	2.50	0.44
1:B:158:MET:CE	1:B:195:LEU:HD21	2.46	0.44
1:B:103:ILE:O	1:B:104:THR:C	2.56	0.44
1:A:18:THR:CG2	1:A:185:ASN:HD21	2.29	0.44
1:A:31:LYS:HG3	1:A:120:ASP:CB	2.46	0.44
1:B:93:PRO:C	1:B:95:VAL:N	2.69	0.44
1:A:196:ILE:HG22	1:A:207:MET:HE2	1.99	0.44
1:A:206:GLN:CG	1:A:252:LEU:HD22	2.43	0.44
1:B:40:PRO:HD2	1:B:41:LYS:H	1.81	0.44
1:B:7:ILE:HG22	1:B:8:TYR:N	2.31	0.44

Continued on next page...

Continued from previous page...

Atom-1	Atom-2	Distance(Å)	Clash(Å)
1:A:148:TYR:CD1	1:A:180:GLY:HA3	2.50	0.44
1:A:3:ARG:HH12	1:A:248:VAL:HA	1.82	0.44
1:A:222:ILE:HD12	1:A:222:ILE:HA	1.76	0.44
1:A:24:ALA:HB2	1:A:226:THR:HG21	1.99	0.44
1:B:266:GLU:O	1:B:270:GLU:N	2.48	0.44
1:A:165:SER:O	1:A:168:ILE:HD12	2.18	0.44
1:A:173:ASN:HD22	1:A:173:ASN:C	2.21	0.44
1:A:177:VAL:O	1:A:178:ARG:HD2	2.18	0.44
1:A:171:TYR:HA	1:A:174:SER:HB2	2.00	0.44
1:B:102:VAL:O	1:B:105:ALA:N	2.51	0.44
1:B:241:ARG:O	1:B:244:ALA:N	2.51	0.44
1:A:103:ILE:CG2	1:A:107:ASN:ND2	2.79	0.43
1:A:8:TYR:CB	1:A:164:ILE:HD11	2.43	0.43
1:A:191:ARG:HB3	1:A:271:PHE:HD2	1.83	0.43
1:A:27:ALA:C	1:A:29:MET:N	2.69	0.43
1:A:43:ASP:O	1:A:44:SER:C	2.55	0.43
1:B:156:MET:O	1:B:157:ALA:C	2.55	0.43
1:A:92:GLU:O	1:A:92:GLU:HG2	2.10	0.43
1:B:164:ILE:O	1:B:168:ILE:HG12	2.18	0.43
1:B:231:ASP:O	1:B:234:ALA:HB3	2.18	0.43
1:B:148:TYR:CE2	1:B:180:GLY:HA3	2.53	0.43
1:A:154:GLU:O	1:A:158:MET:HG2	2.18	0.43
1:A:41:LYS:HE2	4:B:292:ADP:H2'	2.00	0.43
1:A:46:ARG:HG3	1:A:47:LEU:N	2.31	0.43
1:B:7:ILE:HG22	1:B:8:TYR:O	2.19	0.43
1:A:95:VAL:HG23	1:B:171:TYR:HE1	1.84	0.43
1:A:155:MET:HG3	1:A:156:MET:CG	2.43	0.43
1:A:22:LEU:HD11	1:A:243:LEU:HG	1.99	0.43
1:B:139:ILE:HA	1:B:139:ILE:HD13	1.86	0.43
1:B:35:ILE:HD13	1:B:44:SER:O	2.18	0.43
1:A:219:ARG:NE	1:A:230:TYR:OH	2.50	0.43
1:A:246:LYS:HG3	1:A:246:LYS:H	1.61	0.43
1:A:204:GLY:O	1:A:254:VAL:HG11	2.18	0.43
1:B:102:VAL:O	1:B:103:ILE:C	2.56	0.43
1:B:178:ARG:HB2	1:B:253:LEU:HB3	2.00	0.43
1:A:72:LEU:O	1:A:76:LEU:N	2.46	0.43
1:B:280:SER:HB3	1:B:281:ILE:H	1.52	0.43
1:A:173:ASN:ND2	1:A:173:ASN:C	2.72	0.43
1:A:196:ILE:CG2	1:A:207:MET:HE2	2.49	0.43
1:A:80:TYR:CE2	1:A:229:GLU:HG3	2.54	0.43
1:B:39:ASP:OD2	1:B:127:LEU:HD13	2.18	0.43
1:B:37:GLY:HA2	1:B:44:SER:CB	2.48	0.43

Continued on next page...

Continued from previous page...

Atom-1	Atom-2	Distance(Å)	Clash(Å)
1:A:2:MET:CE	1:A:119:LEU:HB2	2.48	0.43
1:A:158:MET:CE	1:A:195:LEU:CD2	2.94	0.43
1:A:178:ARG:HG3	1:A:255:ILE:HD12	1.99	0.43
1:A:254:VAL:HG12	1:A:255:ILE:N	2.33	0.43
1:B:129:ASP:OD2	4:B:292:ADP:H3'	2.18	0.43
1:B:33:VAL:N	5:B:295:HOH:O	2.28	0.43
1:B:158:MET:CE	1:B:195:LEU:CD2	2.97	0.43
1:A:73:GLU:C	1:A:75:VAL:N	2.71	0.43
1:B:222:ILE:HA	1:B:222:ILE:HD13	1.85	0.43
1:A:137:MET:CB	1:A:138:PRO:HD3	2.41	0.43
1:A:189:THR:CA	1:A:192:GLU:HG3	2.48	0.43
1:A:20:GLN:HE22	1:A:46:ARG:HB3	1.82	0.43
1:B:131:VAL:HG21	1:B:163:ASN:CB	2.48	0.43
1:A:159:TYR:C	1:A:159:TYR:CD1	2.92	0.43
1:A:192:GLU:O	1:A:194:GLU:N	2.51	0.43
1:A:22:LEU:HD11	1:A:243:LEU:CG	2.48	0.43
1:B:40:PRO:CD	1:B:127:LEU:CD2	2.97	0.43
1:A:108:PHE:CD1	1:A:108:PHE:C	2.92	0.43
1:A:203:LEU:CD2	1:A:259:ILE:HD11	2.48	0.43
1:B:166:LYS:CD	1:B:258:PRO:HB3	2.49	0.43
1:A:136:ALA:O	1:A:137:MET:C	2.55	0.42
1:B:48:ILE:O	1:B:50:HIS:CE1	2.72	0.42
1:A:276:VAL:CG1	1:A:277:GLU:N	2.82	0.42
1:A:259:ILE:HG23	1:A:263:GLU:OE1	2.19	0.42
1:B:37:GLY:HA3	1:B:87:GLU:HG2	1.99	0.42
1:B:178:ARG:NE	1:B:255:ILE:CD1	2.79	0.42
1:A:192:GLU:O	1:A:193:ASP:C	2.58	0.42
1:A:230:TYR:CG	1:A:231:ASP:N	2.86	0.42
1:B:23:VAL:O	1:B:25:ALA:N	2.52	0.42
1:A:210:PHE:O	1:A:210:PHE:CD2	2.73	0.42
1:A:45:THR:O	1:A:46:ARG:CB	2.67	0.42
1:B:178:ARG:HH21	1:B:255:ILE:CG1	2.32	0.42
1:A:57:ILE:C	1:A:59:GLU:N	2.71	0.42
1:A:119:LEU:HD23	1:A:119:LEU:HA	1.67	0.42
1:A:8:TYR:CE1	1:A:126:VAL:CB	3.02	0.42
1:A:12:GLY:N	4:B:292:ADP:PB	2.93	0.42
1:A:8:TYR:CE1	1:A:126:VAL:CG2	2.99	0.42
1:B:33:VAL:HG13	1:B:83:VAL:HG13	2.01	0.42
1:B:182:LEU:HD13	1:B:205:THR:CG2	2.41	0.42
1:B:186:SER:HA	1:B:192:GLU:OE2	2.19	0.42
1:A:21:ASN:HB2	1:A:240:TYR:CE1	2.54	0.42
1:A:57:ILE:O	1:A:61:ALA:N	2.47	0.42

Continued on next page...

Continued from previous page...

Atom-1	Atom-2	Distance(Å)	Clash(Å)
1:B:132:CYS:O	1:B:135:PHE:N	2.48	0.42
1:B:236:GLN:CG	1:B:240:TYR:CE2	3.02	0.42
1:B:260:THR:CG2	1:B:263:GLU:HG3	2.47	0.42
1:B:5:CYS:HB3	1:B:123:PHE:CE1	2.55	0.42
1:B:184:CYS:SG	1:B:196:ILE:HG13	2.60	0.42
1:A:221:GLU:C	1:A:223:ARG:N	2.72	0.42
1:A:45:THR:HG23	1:A:85:CYS:SG	2.60	0.42
1:A:49:LEU:HD11	1:A:85:CYS:CB	2.50	0.42
1:B:35:ILE:HG23	1:B:84:LYS:O	2.20	0.42
1:B:206:GLN:NE2	1:B:208:ILE:CD1	2.79	0.42
1:A:71:GLU:O	1:A:75:VAL:HG23	2.20	0.42
1:A:133:GLY:O	1:A:136:ALA:HB3	2.20	0.42
1:B:166:LYS:O	1:B:167:GLY:O	2.38	0.42
1:A:137:MET:O	1:A:139:ILE:N	2.52	0.41
1:A:165:SER:O	1:A:168:ILE:N	2.53	0.41
1:A:140:ARG:CB	1:A:171:TYR:CE1	3.03	0.41
1:A:209:HIS:CE1	1:A:242:ALA:CB	2.97	0.41
1:B:182:LEU:H	1:B:182:LEU:HD13	1.84	0.41
1:A:248:VAL:CG1	1:A:248:VAL:O	2.68	0.41
1:A:110:GLU:OE1	1:A:143:LYS:NZ	2.53	0.41
1:A:8:TYR:OH	1:A:126:VAL:HG11	2.19	0.41
1:B:127:LEU:HD12	1:B:127:LEU:HA	1.69	0.41
1:B:137:MET:HB3	1:B:138:PRO:HD3	2.02	0.41
1:B:60:MET:C	1:B:62:ALA:N	2.69	0.41
1:A:191:ARG:HB2	1:A:271:PHE:HD2	1.84	0.41
1:A:216:VAL:HG13	1:A:216:VAL:O	2.20	0.41
1:B:178:ARG:CZ	1:B:255:ILE:HD11	2.50	0.41
1:A:107:ASN:HD22	1:A:107:ASN:H	1.67	0.41
1:A:109:LEU:HB3	1:A:114:ALA:HB3	2.02	0.41
1:A:268:LEU:HB3	1:A:274:MET:HG2	2.00	0.41
1:A:21:ASN:CB	1:A:240:TYR:CD1	3.03	0.41
1:A:208:ILE:CG2	1:A:243:LEU:CD1	2.98	0.41
1:A:98:ALA:O	1:A:102:VAL:HG23	2.19	0.41
1:B:56:THR:HG21	1:B:59:GLU:HG3	2.02	0.41
1:B:155:MET:HB2	1:B:268:LEU:HD11	2.03	0.41
1:A:15:LYS:HG2	1:A:15:LYS:HZ3	1.72	0.41
1:A:260:THR:HG23	1:A:263:GLU:HG3	2.02	0.41
1:A:262:ASP:N	1:A:262:ASP:OD1	2.53	0.41
1:A:48:ILE:N	1:A:48:ILE:HD12	2.35	0.41
1:B:111:GLU:C	1:B:113:GLY:H	2.24	0.41
1:B:191:ARG:HB2	1:B:194:GLU:HG3	2.02	0.41
1:A:273:ILE:N	1:A:273:ILE:CD1	2.64	0.41

Continued on next page...

Continued from previous page...

Atom-1	Atom-2	Distance(Å)	Clash(Å)
1:B:178:ARG:NH2	1:B:255:ILE:CD1	2.81	0.41
1:A:15:LYS:O	1:A:16:SER:C	2.56	0.41
1:A:37:GLY:HA2	1:A:125:ASP:HB3	2.01	0.41
1:A:92:GLU:OE2	1:A:95:VAL:HG12	2.20	0.41
1:B:142:ASN:O	1:B:143:LYS:CD	2.69	0.41
1:B:42:ALA:HB2	5:B:5025:HOH:O	2.19	0.41
1:A:189:THR:HB	1:A:192:GLU:CG	2.50	0.41
1:A:267:LEU:O	1:A:270:GLU:HB3	2.20	0.41
1:B:284:LYS:C	1:B:286:ALA:H	2.24	0.41
1:B:59:GLU:HG3	1:B:59:GLU:H	1.48	0.41
1:A:93:PRO:C	1:A:95:VAL:H	2.22	0.41
1:B:57:ILE:HD13	1:B:105:ALA:CB	2.51	0.41
1:A:199:LEU:O	1:A:202:LYS:N	2.54	0.41
1:A:99:GLY:CA	1:A:137:MET:HG3	2.51	0.41
1:A:131:VAL:HG21	1:A:164:ILE:HG13	2.03	0.41
1:A:140:ARG:HA	1:A:171:TYR:CE1	2.55	0.41
1:B:163:ASN:HA	1:B:166:LYS:HG2	2.03	0.41
1:A:147:ILE:O	1:A:147:ILE:HG22	2.20	0.41
1:B:268:LEU:HD23	1:B:268:LEU:HA	1.71	0.41
1:A:195:LEU:O	1:A:198:ALA:HB3	2.21	0.40
1:B:48:ILE:HG22	1:B:49:LEU:N	2.36	0.40
1:A:214:ASP:C	1:A:216:VAL:N	2.74	0.40
1:A:57:ILE:CG1	1:A:75:VAL:HG11	2.51	0.40
1:A:71:GLU:O	1:A:74:ASP:N	2.53	0.40
1:B:132:CYS:O	1:B:133:GLY:C	2.58	0.40
1:B:165:SER:O	1:B:166:LYS:C	2.59	0.40
1:B:182:LEU:O	1:B:183:ILE:HG12	2.19	0.40
1:B:231:ASP:CB	1:B:234:ALA:HB2	2.41	0.40
1:A:213:ARG:O	1:A:213:ARG:CG	2.67	0.40
1:B:245:ARG:O	1:B:248:VAL:N	2.54	0.40
1:A:21:ASN:HB3	1:A:240:TYR:CG	2.56	0.40
1:B:92:GLU:HA	1:B:93:PRO:HD3	1.52	0.40
1:B:270:GLU:C	1:B:272:GLY:N	2.75	0.40
1:B:61:ALA:O	1:B:65:GLY:N	2.54	0.40
1:A:259:ILE:CG2	1:A:263:GLU:OE1	2.68	0.40
1:A:267:LEU:N	1:A:267:LEU:HD12	2.36	0.40
1:B:103:ILE:O	1:B:106:ILE:HG13	2.20	0.40
1:B:165:SER:O	1:B:168:ILE:N	2.54	0.40
1:A:236:GLN:O	1:A:239:GLU:HB2	2.21	0.40
1:B:270:GLU:C	1:B:272:GLY:H	2.24	0.40
1:A:207:MET:O	1:A:209:HIS:N	2.54	0.40
1:A:184:CYS:HG	1:A:210:PHE:HD1	1.69	0.40

Continued on next page...

Continued from previous page...

Atom-1	Atom-2	Distance(Å)	Clash(Å)
1:A:47:LEU:CD2	1:A:225:MET:N	2.83	0.40
1:A:230:TYR:CD1	1:B:284:LYS:CA	3.05	0.40
1:B:50:HIS:HE1	1:B:225:MET:HB2	1.86	0.40

There are no symmetry-related clashes.

5.3 Torsion angles

5.3.1 Protein backbone ⓘ

In the following table, the Percentiles column shows the percent Ramachandran outliers of the chain as a percentile score with respect to all X-ray entries followed by that with respect to entries of similar resolution. The Analysed column shows the number of residues for which the backbone conformation was analysed, and the total number of residues.

Mol	Chain	Analysed	Favoured	Allowed	Outliers	Percentiles	
1	A	281/289 (97%)	189 (67%)	55 (20%)	37 (13%)	0	1
1	B	285/289 (99%)	173 (61%)	81 (28%)	31 (11%)	1	2
All	All	566/578 (98%)	362 (64%)	136 (24%)	68 (12%)	1	1

All (68) Ramachandran outliers are listed below:

Mol	Chain	Res	Type
1	A	44	SER
1	A	46	ARG
1	A	103	ILE
1	A	104	THR
1	A	117	ASP
1	A	155	MET
1	A	169	VAL
1	A	170	LYS
1	A	176	SER
1	A	193	ASP
1	A	208	ILE
1	A	230	TYR
1	A	273	ILE
1	A	275	GLU
1	B	26	LEU
1	B	48	ILE
1	B	62	ALA

Continued on next page...

Continued from previous page...

Mol	Chain	Res	Type
1	B	116	GLU
1	B	119	LEU
1	B	193	ASP
1	B	215	ASN
1	B	222	ILE
1	B	256	PRO
1	B	280	SER
1	B	281	ILE
1	A	72	LEU
1	A	74	ASP
1	A	142	ASN
1	A	153	GLY
1	A	180	GLY
1	A	192	GLU
1	A	215	ASN
1	A	250	ASN
1	B	15	LYS
1	B	24	ALA
1	B	37	GLY
1	B	73	GLU
1	B	133	GLY
1	B	190	ASP
1	B	273	ILE
1	A	70	LEU
1	A	270	GLU
1	B	68	GLU
1	B	113	GLY
1	B	164	ILE
1	B	199	LEU
1	A	118	ASP
1	A	139	ILE
1	A	195	LEU
1	B	139	ILE
1	B	183	ILE
1	B	224	ARG
1	A	73	GLU
1	A	94	GLY
1	A	116	GLU
1	A	166	LYS
1	A	266	GLU
1	B	225	MET
1	A	282	VAL

Continued on next page...

Continued from previous page...

Mol	Chain	Res	Type
1	B	30	GLY
1	B	270	GLU
1	B	272	GLY
1	A	137	MET
1	A	281	ILE
1	B	216	VAL
1	A	23	VAL
1	A	175	GLY
1	B	217	VAL

5.3.2 Protein sidechains ⓘ

In the following table, the Percentiles column shows the percent sidechain outliers of the chain as a percentile score with respect to all X-ray entries followed by that with respect to entries of similar resolution. The Analysed column shows the number of residues for which the sidechain conformation was analysed, and the total number of residues.

Mol	Chain	Analysed	Rotameric	Outliers	Percentiles	
1	A	203/233 (87%)	152 (75%)	51 (25%)	1	2
1	B	197/233 (84%)	141 (72%)	56 (28%)	0	2
All	All	400/466 (86%)	293 (73%)	107 (27%)	1	2

All (107) residues with a non-rotameric sidechain are listed below:

Mol	Chain	Res	Type
1	A	5	CYS
1	A	13	ILE
1	A	17	THR
1	A	18	THR
1	A	22	LEU
1	A	28	GLU
1	A	31	LYS
1	A	38	CYS
1	A	44	SER
1	A	46	ARG
1	A	51	SER
1	A	57	ILE
1	A	58	MET
1	A	59	GLU
1	A	66	THR
1	A	72	LEU

Continued on next page...

Continued from previous page...

Mol	Chain	Res	Type
1	A	73	GLU
1	A	76	LEU
1	A	103	ILE
1	A	111	GLU
1	A	122	VAL
1	A	129	ASP
1	A	154	GLU
1	A	158	MET
1	A	165	SER
1	A	173	ASN
1	A	176	SER
1	A	179	LEU
1	A	182	LEU
1	A	185	ASN
1	A	190	ASP
1	A	195	LEU
1	A	196	ILE
1	A	199	LEU
1	A	206	GLN
1	A	207	MET
1	A	209	HIS
1	A	211	VAL
1	A	213	ARG
1	A	216	VAL
1	A	219	ARG
1	A	222	ILE
1	A	226	THR
1	A	232	PRO
1	A	252	LEU
1	A	255	ILE
1	A	260	THR
1	A	262	ASP
1	A	266	GLU
1	A	271	PHE
1	A	274	MET
1	B	10	LYS
1	B	13	ILE
1	B	15	LYS
1	B	17	THR
1	B	33	VAL
1	B	34	MET
1	B	35	ILE

Continued on next page...

Continued from previous page...

Mol	Chain	Res	Type
1	B	43	ASP
1	B	44	SER
1	B	56	THR
1	B	74	ASP
1	B	85	CYS
1	B	88	SER
1	B	95	VAL
1	B	100	ARG
1	B	103	ILE
1	B	106	ILE
1	B	112	GLU
1	B	117	ASP
1	B	127	LEU
1	B	129	ASP
1	B	130	VAL
1	B	140	ARG
1	B	147	ILE
1	B	149	ILE
1	B	158	MET
1	B	166	LYS
1	B	176	SER
1	B	178	ARG
1	B	182	LEU
1	B	185	ASN
1	B	186	SER
1	B	191	ARG
1	B	193	ASP
1	B	194	GLU
1	B	197	ILE
1	B	201	ASN
1	B	202	LYS
1	B	203	LEU
1	B	208	ILE
1	B	210	PHE
1	B	216	VAL
1	B	217	VAL
1	B	222	ILE
1	B	223	ARG
1	B	224	ARG
1	B	226	THR
1	B	238	ASP
1	B	239	GLU

Continued on next page...

Continued from previous page...

Mol	Chain	Res	Type
1	B	255	ILE
1	B	259	ILE
1	B	260	THR
1	B	262	ASP
1	B	269	MET
1	B	280	SER
1	B	282	VAL

Some sidechains can be flipped to improve hydrogen bonding and reduce clashes. All (16) such sidechains are listed below:

Mol	Chain	Res	Type
1	A	20	GLN
1	A	55	ASN
1	A	107	ASN
1	A	142	ASN
1	A	145	GLN
1	A	163	ASN
1	A	173	ASN
1	A	185	ASN
1	A	201	ASN
1	A	257	ASN
1	B	4	GLN
1	B	145	GLN
1	B	188	ASN
1	B	206	GLN
1	B	209	HIS
1	B	236	GLN

5.3.3 RNA ⓘ

There are no RNA chains in this entry.

5.4 Non-standard residues in protein, DNA, RNA chains ⓘ

There are no non-standard protein/DNA/RNA residues in this entry.

5.5 Carbohydrates ⓘ

There are no carbohydrates in this entry.

5.6 Ligand geometry ⓘ

Of 4 ligands modelled in this entry, 2 are monoatomic - leaving 2 for Mogul analysis.

In the following table, the Counts columns list the number of bonds (or angles) for which Mogul statistics could be retrieved, the number of bonds (or angles) that are observed in the model and the number of bonds (or angles) that are defined in the chemical component dictionary. The Link column lists molecule types, if any, to which the group is linked. The Z score for a bond length (or angle) is the number of standard deviations the observed value is removed from the expected value. A bond length (or angle) with $|Z| > 2$ is considered an outlier worth inspection. RMSZ is the root-mean-square of all Z scores of the bond lengths (or angles).

Mol	Type	Chain	Res	Link	Bond lengths			Bond angles		
					Counts	RMSZ	# $ Z > 2$	Counts	RMSZ	# $ Z > 2$
3	SF4	B	290	1	12,12,12	8.81	12 (100%)	0,24,24	0.00	-
4	ADP	B	292	2	29,29,29	1.00	2 (6%)	45,45,45	2.02	5 (11%)

In the following table, the Chirals column lists the number of chiral outliers, the number of chiral centers analysed, the number of these observed in the model and the number defined in the chemical component dictionary. Similar counts are reported in the Torsion and Rings columns. '-' means no outliers of that kind were identified.

Mol	Type	Chain	Res	Link	Chirals	Torsions	Rings
3	SF4	B	290	1	-	0/0/48/48	0/0/5/5
4	ADP	B	292	2	-	0/16/32/32	0/1/3/3

All (14) bond length outliers are listed below:

Mol	Chain	Res	Type	Atoms	Z	Observed(Å)	Ideal(Å)
3	B	290	SF4	S3-FE1	-14.13	2.23	2.33
3	B	290	SF4	S2-FE4	-12.77	2.24	2.33
3	B	290	SF4	S2-FE3	-10.72	2.26	2.33
3	B	290	SF4	S4-FE2	-10.18	2.26	2.33
3	B	290	SF4	S1-FE4	-9.98	2.26	2.33
3	B	290	SF4	S4-FE3	-7.50	2.28	2.33
3	B	290	SF4	S1-FE3	-6.88	2.28	2.33
3	B	290	SF4	S2-FE1	-6.62	2.28	2.33
3	B	290	SF4	S4-FE1	-6.29	2.29	2.33
3	B	290	SF4	S1-FE2	-5.22	2.29	2.33
3	B	290	SF4	S3-FE4	-5.19	2.29	2.33
3	B	290	SF4	S3-FE2	-3.11	2.31	2.33
4	B	292	ADP	PB-O3A	2.57	1.64	1.60
4	B	292	ADP	PA-O3A	2.52	1.64	1.59

All (5) bond angle outliers are listed below:

Mol	Chain	Res	Type	Atoms	Z	Observed(°)	Ideal(°)
4	B	292	ADP	C8-N9-C1'	-10.41	105.87	126.38
4	B	292	ADP	O2A-PA-O3A	5.79	132.62	105.14
4	B	292	ADP	O3A-PA-O1A	-2.97	89.94	111.28
4	B	292	ADP	PA-O3A-PB	2.77	139.82	131.68
4	B	292	ADP	C8-N9-C4	-2.12	105.28	106.90

There are no chirality outliers.

There are no torsion outliers.

There are no ring outliers.

5.7 Other polymers ⓘ

There are no such residues in this entry.

5.8 Polymer linkage issues

There are no chain breaks in this entry.

6 Fit of model and data ⓘ

6.1 Protein, DNA and RNA chains ⓘ

EDS was not executed - this section will therefore be empty.

6.2 Non-standard residues in protein, DNA, RNA chains ⓘ

EDS was not executed - this section will therefore be empty.

6.3 Carbohydrates ⓘ

EDS was not executed - this section will therefore be empty.

6.4 Ligands ⓘ

EDS was not executed - this section will therefore be empty.

6.5 Other polymers ⓘ

EDS was not executed - this section will therefore be empty.